

Response to the comments

Major Revision

Editor Decision: Reconsider after major revisions (13 Mar 2017) by Dr Nathalie Combourieu Nebout

Comments to the Author:

5 Dear Authors,

We have received the report of one reviewer that asks you other corrections after having a look on your corrected version.

10 Please take carefully into account the remarks and corrections and send to Climate of the Past your new corrected manuscript with amendments in track change mode.

I will take my decision after looking on the revised version and decide if you paper will need supplementary reviews.

Best regards

15 Nathalie

Response:

Dear Editor Nebout,

20 Thank you very much for your help. We took carefully into account the referee's remarks and corrections, and revised carefully the manuscript according to these comments. A point-by-point response to the referee's comments and all relevant changes made in the revised manuscript are listed as follows. At the same time, the second co-author (Professor Simon G. Haberle, a native speaker) carefully copyedited the final revised manuscript and highlighted all relevant changes. Please see the files "Response to the comments" and "the new corrected manuscript with amendments in track change mode" for detail.

25 We hope that we successfully complied with the comments, and we would be grateful if you would consider this revised ms for publication in Climate of the Past.

Kind regards,

Xiayun Xiao

30 In name of all the co-authors.

Report #1

accepted subject to minor revisions

35

Comments on "Postglacial fire history and interactions with vegetation and climate in southwestern Yunnan Province of China" by Xiayun Xiao et al.

40 I carefully read the revised version of the manuscript by Xiayun Xiao et al. and their response to my previous comments. The authors did take my comments into account very well and I think that the manuscript in its present form is improved. I notably appreciated the calculation of rarefied richness, which obviously did not change significantly the diversity trend but is, nonetheless, mathematically correct in a paleoecological context. Following my reading I think that the manuscript could go into the interactive review process after some minor corrections listed below:

45 **Response:** We appreciate very much these positive comments on our revised manuscript.

1) I still did not agree with the use of the term "arbor" since its use in an ecological context appears awkward to me.

From the Cambridge dictionary I obtain “a sheltered place in a garden formed by trees and bushes that are grown to partly surround it: a rose arbor” and “An axle or spindle on which something revolves.” From the Oxford dictionary. I would suggest to stick with “trees and shrubs”.

Response: Ok, we replace “arbor” with “trees and shrubs” in the revised manuscript.

2) “Namely, plant diversity increased after fires. Based on this conclusion, we consider that fire suppression and control is reasonable in our study area.” I would take extreme caution regarding this and management scenario such as 130 p23. I do not know the study region the authors are dealing with, but extreme management of fire such as active suppression could have major consequences (e.g. 1986 yellowstone fire in the US that was the result of almost a century of fire suppression), not only on biodiversity but on human livelihoods, economy, etc.

Response: Ok, we changed this certitude into a hypothesis in the revised manuscript. Namely, we changed “Thus, fire control and suppression is a necessary management strategy for forest fires in the study area, which will reduce the risk of large forest fires and even keep relatively high biodiversity in the future.” into “In our study area, fire is not favorable to plant diversity, and if it is of high enough frequency and intensity, fire may also deplete plant diversity. Thus, fire control and suppression may be one management strategy to maintain plant diversity in the study area, which will have the added benefit of reducing the risk of large forest fires and maintaining relatively high biodiversity in the future.” Please see [lines 24-27 page 20](#) in the marked-up manuscript version for detail.

3) “Alnus is a nonflammable tree species. However, if Alnus is used to prevent fires, it is necessary to plant pure Alnus forest, because fire resistant ability of low-density Alnus forest or mixed-Alnus forest is relatively weak.” I think this sentence is not necessary and not related to the present study.

Response: We have rewritten the section to highlight the importance of *Alnus* as a fire resistant plant to be used in the management of fires in the region. The section is important to the paper as it addresses directly the management options that might be available to those who work to protect the region from major fires. The palaeoecological record can help to inform managers of the risk of major fires and so we would like to keep this section in the paper. Please see [lines 15-18 page 20](#) in the marked-up manuscript version for detail.

4) “At present, studies on fire history and the interactions between long-term vegetation, fire, and climate are mainly concentrated in North and South America (<https://gis.ncdc.noaa.gov/map/viewer/#app=cdo&cfg=paleo&theme=paleo&layers=000000000001>). Based on these studies, the USA, Canada and parts of Europe have been actively advancing methods and numerical approaches to reconstruct long term fire histories.” those two sentence do not make sense: Fire reconstructions are not concentrated in NA and SA, please refer to the Global Charcoal Database if needed https://www.paleofire.org/index.php?p=CDA/index&gcd_menu=CDA (also the NOAA link is not working). Fire reconstruction is active outside of US Canada and parts of Europe: e.g. Australia, etc.

Response: I don’t know why the NOAA link can be not opened now. We reopen the link (<https://www.ncdc.noaa.gov/data-access/paleoclimatology-data/datasets/fire-history>), and then click “Interactive Map”, we can get a map of study sites on paleofire (Fig. S1). From this map, we find that study sites in North and South America seems to be denser than that in other regions.

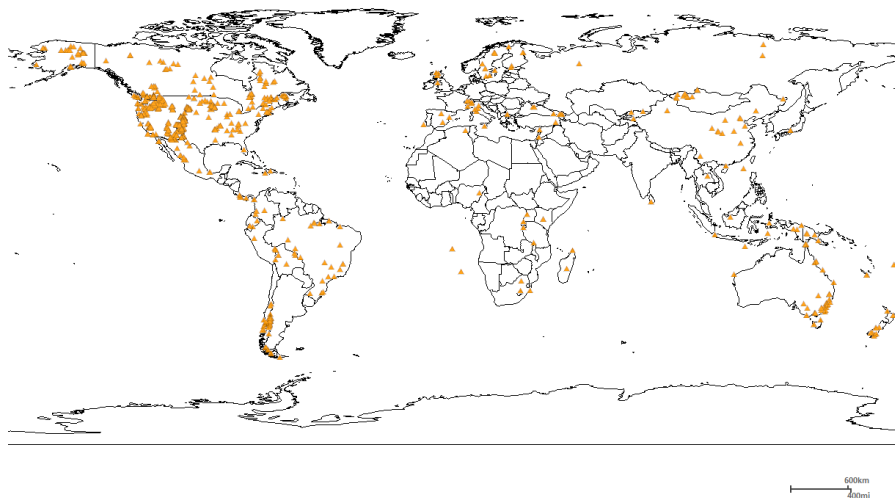


Fig. S1 A map of study sites on paleofire from the NOAA link

5 According to the referee's comment, we open the Global Charcoal Database (https://www.paleofire.org/index.php?p=CDA/index&gcd_menu=CDA), then get another map of study sites on paleofire (Fig. S2). From this map, it seems to be that study sites on paleofire are mainly concentrated in North and South America, parts of Europe and Oceania.

The database contains 1079 cores



Fig. S2 A map of study sites of paleofire from the Global Charcoal Database

10 Because the Global Charcoal Database includes more study sites on paleofire than the NOAA link, we adopted the result of the Global Charcoal Database. Thus, we changed these two sentences into "At present, studies on fire history and the interactions between long-term vegetation, fire, and climate are mainly concentrated in North and South America, parts of Europe and Oceania (https://www.paleofire.org/index.php?p=CDA/index&gcd_menu=CDA).

Based on these studies, methods and numerical approaches to reconstruct long term fire histories have been actively advanced.” Please see [lines 20-22 page 6](#) in the marked-up manuscript version for detail.

5) l21 p22 “destroyer” please use appropriate term

Response: We changed “be a destroyer of” into “degrade”. Please see [line 19 of page 19](#) in the marked-up manuscript version for detail.

6) l16 p22 “concentricity” please explain

Response: This sentence has been removed as we consider that it is now redundant and the point of how the richness and evenness of the forest responds to fire has already been adequately explained in this paragraph.

7) P22 and elsewhere “warmer species” do you mean species adapted to warmer climate?

Response: Yes. We changed “warmer species” into “species adapted to warmer temperatures”. Please see [line 18 of page 19](#) in the marked-up manuscript version for detail.

Postglacial fire history and interactions with vegetation and climate in southwestern Yunnan Province of China

Xiayun Xiao¹, Simon G. Haberle², Ji Shen¹, Bin Xue¹, Mark Burrows², and Sumin Wang¹

¹State Key Laboratory of Lake Science and Environment, Nanjing Institute of Geography and Limnology, Chinese Academy of Sciences, Nanjing 210008, China

²Department of Archaeology and Natural History, College of Asia and the Pacific, Australian National University, Canberra, Australian Capital Territory 0200, Australia

Correspondence to: Xiaoyun Xiao (xyxiao@niglas.ac.cn); Ji Shen (jjshen@niglas.ac.cn)

Abstract. A high-resolution, continuous 18.5 ka (1 ka=1000 cal yr BP) macroscopic charcoal record from Qinghai Lake in southwestern Yunnan Province, China reveals postglacial fire frequency and variability history. The results show that three periods with high-frequency and high-severity fires occurred during the periods 18.5-15.0 ka, 13.0-11.5 ka, and 4.3-0.8 ka, respectively. This record was compared with major pollen taxa and pollen diversity indices from the same core, and tentatively related with the regional climate proxy records with the aim to separate climate- from human-induced fire activity, and discuss vegetation-fire-climate interactions. The results suggest that fire was mainly controlled by climate before 4.3 ka and by the combined actions of climate and humans after 4.3 ka. Before 4.3 ka, high fire activity corresponded to cold and dry climatic conditions, while warm and humid climatic conditions brought infrequent and weak fires. Fire was an important disturbance factor and played an important role in forest dynamics around the study area. Vegetation responses to fire after 4.3 ka are not consistent with those before 4.3 ka, suggesting that human influence on vegetation and fire regimes may have become more prevalent after 4.3 ka. The comparisons between fire activity and vegetation reveal that evergreen oaks are flammable plants and fire-tolerant taxa. *Alnus* is a fire-adapted taxon and a nonflammable plant, but density of *Alnus* forest is a key factor to decide its fire resistant ability. The forests dominated by *Lithocarpus/Castanopsis* and/or tropical trees and shrubs, are not easy to ignite, but *Lithocarpus/Castanopsis* and tropical trees and shrubs, are fire-sensitive taxa. Fire appears to be unfavourable to plant diversity in the study area.

删除的内容: arbors

删除的内容: arbors

删除的内容: is

1 Introduction

Fire is a natural, recurring episodic event in almost all types of vegetation and is one of the primary natural disturbance factors in forest ecosystems (Harrison et al., 2010). It has a strong influence on the extent and diversity of forest resources, carbon cycles and global climate change. Major forest fires often cause serious harm and huge losses to the forest, environment and human livelihoods. In order to decrease the harm and losses, it seems necessary to prevent the occurrence of fires and suppress fires. However, some ecologists have discovered that fire suppression (or the exclusion of fire-catalyzed practices) can significantly degrade biodiversity (Pyne, 1998). On the other hand, some

删除的内容: is a powerful destroyer of

studies suggest plant diversity increases after fires (Trabaud and Lepart, 1980; Stocker, 1981; Nasi et al., 2002). Thus, there is still debate about the effects of fire upon biodiversity, which may reflect different effects of fire on regional biodiversity as well as different scales of fire intensity and frequency that can occur. In order to make a reasonable strategy for forest fire management for a region, we need to better understand effects of fire upon biodiversity in this region. At the same time, a better understanding of the driving mechanisms of forest fires is also imperative. Knowledge of past fire activity is a key to understanding the present day and for making sustainable management policies for forest ecosystems (Ali et al., 2009). Thus, it is necessary to reconstruct past long-term fire frequency histories, which can inform the current conceptual models of forest recovery after fire and provide guidance for forest management strategies in areas affected by frequent fires (Tinner et al., 1999; McWethy et al., 2013; Morales-Molino et al., 2013; Kloster et al., 2015). Fire histories have been reconstructed by using the time series of fire atlases (Rollins et al., 2001; Le Page et al., 2008), collection and analysis of fire-scarred trees (Arno and Sneek, 1977; Bake and Dugan, 2013), and charcoal particle analysis in peat and lake sediments (Whitlock and Larsen, 2001; Holz et al., 2012; de Porras et al., 2014). However, sources of fire atlases and fire-scarred trees are limited, and their time spans are relatively short (Brunelle and Whitlock, 2003), whereas the charcoal records from peat and lake sediments can provide long continuous fire frequency history and allow vegetation-fire-climate interactions to be examined (Gavin et al., 2007; Morales-Molino et al., 2013). Recently, black carbon was also gradually used as evidence of fire history reconstruction (Schmidt and Noack, 2000; Wang et al., 2013; Wolf et al., 2014) and its subtypes of char and soot have potential to differentiate between smoldering and flaming fires (Han et al., 2012, 2016).

At present, studies on fire history and the interactions between long-term vegetation, fire, and climate are mainly concentrated in North and South America, parts of Europe and Oceania (https://www.paleofire.org/index.php?p=CDA/index&gcd_menu=CDA). Based on these studies, methods and numerical approaches to reconstruct long term fire histories have been actively advanced. China has only started relatively late in this field. Most studies on fire history are concentrated in northern China (Li et al., 2005; Huang et al., 2006; Jiang et al., 2008; Han et al., 2012; Li et al., 2013; Wang et al., 2013; Zhang et al., 2015a), while studies in southern China are relatively few (Sun et al., 2000; Luo et al., 2001; Gu et al., 2008; Xiao et al., 2013; Zhang et al., 2015b). In southwestern China, to the best of our knowledge, only Gu et al. (2008) reconstructed fire history for the past 2.0 ka using microcharcoal and Zhang et al. (2015b) reconstructed fire history for the past 18.5 ka using black carbon. These studies on fire history in China have mostly concentrated on the relationship between fire activity and climatic change on orbital to suborbital timescales (Sun et al., 2000; Luo et al., 2001; Li et al., 2005; Huang et al., 2006; Jiang et al., 2008; Zhang et al., 2015a, b). Studies of past fire frequency and magnitude and its relationship to climate, human activity and vegetation dynamics are however, uncommon for China (Gu et al., 2008; Wang et al., 2013).

The climate in Yunnan Province is characterized by distinct wet and dry seasons with warm-wet conditions in

删除的内容: that

删除的内容: argument

删除的内容: illustrate

删除的内容: in different regions

删除的内容: can

删除的内容:

删除的内容: (<https://gis.ncdc.noaa.gov/map/viewer/#app=cdo&cfg=paleo&heme=paleo&layers=000000000001>)

删除的内容: the USA, Canada and parts of Europe have been actively advancing

summer and mild-dry conditions in winter, which are typically conducive to frequent forest fires (Xu, 1991). Consequently, Yunnan Province is a zone of high fire frequency in China. The study of forest fire events for the period 1982-2008 in Yunnan Province shows that the rate of forest loss due to forest fire in different vegetation zones are variable (Chen et al., 2012). The highest rate of forest loss occurs in semi-humid evergreen broadleaved forest dominated by *Cyclobalanopsis glaucooides* and evergreen oaks and *Pinus yunnanensis* forest. The rate of forest loss in monsoon evergreen broadleaved forest dominated by *Castanopsis* and *Lithocarpus* is relatively low. The rate of forest loss in tropical rainforest and monsoon forest zones is however, lower than that in the former two vegetation types (Chen et al., 2012). A low resolution charcoal record from Qinghai Lake in southwestern Yunnan Province of China was briefly mentioned in Xiao et al. (2015). Here, we presented a high-resolution and continuous macroscopic charcoal record spanning about 18.5 ka from the same core, and specifically analyzed the fire event history and fire regime dynamics through time in southwestern Yunnan Province based on the charcoal record. Combined with the climate records and vegetation histories since 18.5 ka, reconstructed in Xiao et al. (2015), the main controlling factors of forest fire dynamics and the relationship between fire activity and vegetation were examined in this study. These results provide new evidences for studies on fire frequency variability and vegetation–fire–climate interactions in southwestern China, which is important for improving our predictions of the influence of climatic change on future fire activity and planning appropriate management policies for forest ecosystems.

2 Regional setting

Qinghai Lake (25°7'56.75" N, 98°34'19.16" E, 1885 m a.s.l.) is located in the northeastern Tengchong County of southwestern Yunnan Province, southwestern China (Fig. 1). Southwestern China is characterized by the alternation of high mountain ranges running roughly north to south (Qionglai Mountain, Daxue Mountain, Shaluli Mountain from east to west) and parallel, deep and narrowly incised river valleys (such as Dadu River, Yalong River, Jinsha River). The large span of longitude and latitude, and altitudinal differences (ranging from about 1000 to above 5000 m a.s.l.) in southwestern China result in diverse vegetation types and various vertical vegetation belts in the region (Xiao et al., 2011). Gaoligong is the westernmost mountain among the mountains over 3000 m a.s.l. in southwestern China (Fig. 1). Qinghai Lake is situated to the west of the Gaoligong Mountain, and the topography of its west and south is below 2500 m a.s.l. Qinghai Lake is a volcanic dammed lake with a catchment area of 1.5 km² and a surface area of c. 0.25 km² (in 1990) (Wang et al., 2002). The average and maximum water depths were 5.2 m and 8.1 m in 2010, respectively. Currently fed by precipitation, groundwater and surface runoff, the lake is without a natural outlet.

The study region is characterized by a subtropical humid monsoon climate. It is mainly affected by the warm-humid airflow from the Indian Ocean and Bengal Bay in summer and by the southern branch of the Westerlies

删除的内容: conditions

删除的内容: peroid

删除的内容: rates

删除的内容: different

删除的内容: rate

删除的内容: rate

删除的内容: F

删除的内容: rate

删除的内容: zones

删除的内容: specially

删除的内容:

删除的内容: s

删除的内容: altitude

删除的内容: rich

in winter. Because of its southwestern location in Yunnan Province, the climate in the region is warm and very humid in summer and mild and moderately dry in winter. Tengchong meteorological station near Qinghai Lake records a mean annual temperature of 15.4°C and mean annual precipitation of 1506 mm (Fig. 1c). Most of the precipitation is concentrated in the rainy season from May to October, which is 85% of the annual precipitation (Xiao et al., 2015).

5 Qinghai Lake is located within a zone of semi-humid evergreen broadleaved forest in Hengduan Mountains of western Yunnan Province, whose south is adjacent to a zone of monsoon evergreen broadleaved forest of southwestern Yunnan Province (Wu et al., 1987). Due to the strong influence of human activities, the catchment of Qinghai Lake is mainly covered by plantation forests such as *Taiwania cryptomerioides*, *Cunninghamia lanceolata*, and *Alnus nepalensis*. The vertical vegetation belts on the west slope of the southern Gaoligong Mountain varies gradually from a semi-humid evergreen broadleaved forest (<2200 m a.s.l.) to a mid-montane humid evergreen broadleaved forest (2200-2800 m a.s.l.), *Rhododendron* shrubland (2800-3000 m a.s.l.), a sub-alpine shrub meadow (3000-3500 m a.s.l.), and sparse vegetation in rock debris (>3500 m a.s.l.) from bottom to top (Qin et al., 1992).

In our published pollen record from Qinghai Lake (Xiao et al., 2015), *Alnus*, evergreen oaks and *Lithocarpus/Castanopsis* are dominant tree taxa. The proportion of tropical trees and shrubs, comprised mainly of *Altingia*, *Ficus*, *Pentaphylax*, *Schima*, *Symplocos*, *Camellia*, *Eurya*, and *Mallotus/Macaranga* is relatively high in the forests. And *Pinus*, *Betula* and deciduous oaks also often occur. At present, studies on combustibility of these plant species are mainly concentrated in experimental analysis. The trade standard for forestry in People's Republic of China (State Forestry Administration of China, 2008) suggests that *Pinus* spp. and *Quercus* spp. are identified as a flammable class; *Alnus* spp., *Castanopsis* spp. and *Schima* spp. are identified as a nonflammable class; and *Betula* spp., *Cryptomeria* spp. and *Cunninghamia lanceolata* fall in between these two classes. The experimental results about the combustion characteristics of 48 tree species from south China show that the fire-resistant ability of *Alnus nepalensis*, *Schima superba*, *Camellia oleifera*, *Altingia gracilipes*, *Exbucklandia populnea*, and *Myria rubra* is very strong (Tian et al., 2001). The combustion test results of 40 common tree species from Jiangxi Province suggest that *Symplocos setchuensis*, *Schima superba*, *Castanopsis sclerophylla*, and *Camellia oleifera* are the strongest fire-resistant tree species (Zhen et al., 2012). *Ficus microcarpa*, *Eurya macartneyi*, and *Pentaphylax euryoides* are selected as tree species for a biological fire prevention belt in regional cities because of their strong fire resistance (Lu, 2005). Combustion experiments of 25 woody plants from Kunming, Yunnan Province show that *Alnus nepalensis*, *Camellia aleifera*, and *Eurya groffii* are considered to be nonflammable tree species (Li et al., 2009).

3 Material and methods

3.1 Sediment sampling, laboratory analysis and dating

删除的内容: arbors (

删除的内容: , the same below)

删除的内容: of

删除的内容: city

A 832 cm long sediment core (TCQH1) was extracted in waters 6.3 m deep near the centre of Qinghai Lake, in November 2010 using a UWITEC piston corer. The core was sectioned at 1 cm intervals. Samples were stored at 4°C until analyzed. Macroscopic charcoal particles (>125 µm in diameter) were extracted from 1 cm³ samples at contiguous 1-cm intervals. Charcoal samples were soaked in 20 ml of 5% sodium hexametaphosphate for >24 hours and 20 ml of 10% H₂O₂ solution for 24 hour to disaggregate the sediment (Huerta et al., 2009). Samples were gently washed through a 125 µm mesh sieve and the residue was transferred into gridded petri dishes and counted under a stereomicroscope at magnifications of 40×. The age-depth model for the core has been established in the previously published study (Xiao et al., 2015), based on the ²¹⁰Pb and ¹³⁷Cs dates and the AMS ¹⁴C dates and using the recently developed Bayesian method (Blaauw and Christen, 2011). According to the model, the bottom date is presumed to be 18.5 ka, and the average temporal sampling resolution is ~22 years for the macroscopic charcoal record. The sedimentation rate before ~0.9 ka is relatively low and steady, with a mean of 0.0385 cm/a. Between ~0.9 ka and 1952 AD, the rate is evidently higher at 0.124 cm/a. After 1952 AD, the rate is far higher than the earlier periods, with a mean of 0.741 cm/a (Fig. 2).

3.2 Selection of percentages or concentrations of the main pollen taxa

Pollen concentration is usually used as a proxy indicator of vegetation density or biomass productivity and thus climatic condition (Grosjean et al., 2007). However, apart from biomass productivity, some other factors such as the lithology, sedimentation rate, input of inwashed material, detritus content and within-lake sedimentary processes may confuse the records of real changes in pollen concentration (Hicks and Hyvärinen, 1999). In this study, biomass productivity and climatic conditions revealed by total pollen concentration are not exactly consistent with those disclosed by pollen percentage assemblage (Fig. SF1). For example, the lowest pollen concentrations during the period 14.5-13.0 ka BP might not indicate unfavourable climatic conditions, but rather high detritus content under conditions of rising humidity and intensified surface run-off. In addition, the tendencies of the concentrations and percentages for the six main pollen taxa are almost consistent except for some differences during the period 14.5-13.0 ka BP (Fig. SF2). Thus, considering that the impact factors of the pollen concentration are complicated in this study, we use only pollen percentages for the main pollen taxa.

3.3 Pollen diversity indices and standardized method

Richness and evenness are two important components of biodiversity. Different diversity indices reflect species richness as well as evenness but with different weight (Odgaard, 1999). The richness index only counts the total number of taxonomic units, whereas the number of individuals is not considered (Magurran, 1988), thus it is easily

删除的内容: R

influenced by rare species. Simpson's index is primarily influenced by the relative frequency or representation of individuals (namely species evenness) (Simpson, 1949), which depends mainly on dominant species and is less sensitive to species richness (Odgaard, 1999). Analytic arguments, mathematical models, and simulations indicate that relationship between richness and evenness is simple, positive, and strong (Stirling and Wilsey, 2001). However, other studies indicate that richness and evenness may be independent measures in diversity (Smith and Wilson, 1996; Wilsey and Potvin, 2000), and their relationships may vary with ecological effects. In order to evaluate the plant diversity and explore the relationship between richness and evenness around the study area, palynological richness index and Simpson's reciprocal index were adopted in this study.

Palynological richness index is the number of different pollen types in every pollen sample. Because pollen counts in samples may differ, rarefaction analysis was used to estimate palynological richness (Birk and Line, 1992), which was computed using the vegan package for R (<http://CRAN.R-project.org/package=vegan>) (Oksanen et al., 2016). Simpson's reciprocal index (1/D) was calculated as

$$\frac{1}{D} = \frac{N(N-1)}{\sum_{i=1}^S n_i(n_i-1)}$$

where n_i is the number of individuals in the i th pollen types, N the total number of individuals and S the total number of pollen types (Xiao et al., 2008). The higher values of this index indicate the greater sample evenness.

In this study, we use min-max normalization to standardize pollen percentages, which can eliminate the influence of their values and better visualize the interrelation among percentage variations of the selected pollen types in the same panel of one figure. The formula is $x^* = \frac{x_i - \min}{\max - \min}$. Where x^* is the standardized data of the selected pollen type; x_i is percentage of this pollen type in the i th sample; max is the maximum value of this pollen type percentage; min is the minimum value of this pollen type percentage.

3.4 Fire event identification

Fire events were recognized by separating the macroscopic charcoal accumulation rates (CHAR; particles/cm²/a) into CHAR background (BCHAR) and CHAR peak (PCHAR) components by using CharAnalysis software (Higuera et al., 2008; <http://charanalysis.googlepages.com/>). BCHAR was determined with a 500-year Lowess Smoother, robust to outliers, and it is the slowly varying trend in charcoal accumulation which may represent gradual changes in regional fire activity and/or charcoal production per fire. PCHAR was taken as residual after subtracting BCHAR from CHAR, representing local fire episodes (namely one or more fire events occurring in the duration of a peak). The threshold

删除的内容: impacted

删除的内容: concentricity or

value for charcoal peak detection was set at the 95th percentile of a Gaussian mixture modeling noise in the CHAR peak time series (Higuera et al., 2008). Fire frequency (episodes/ka) is the sum of the total number of fires within a 1000-a period, smoothed with a Lowess Smoother. Peak magnitude (particles/cm²/peak) is the total charcoal influx in a CHAR peak and varies with fire size, severity, proximity, and taphonomic processes (Whitlock et al., 2006; Huerta et al., 2009; Walsh et al., 2010). The magnitude of CHAR peaks can be used as a proxy for fire severity (Ali et al., 2012), indicating further degrees of organic matter loss or burned biomass.

4 Results

The macroscopic charcoal and fire activity records were divided into six zones (from TCCC-1 to TCCC-6) (Fig. 2) based on their visual inspection and referring to palynological zonation boundaries, in order to facilitate the comparison with major pollen taxa and previous vegetation reconstruction for the same core (Xiao et al., 2015). The characteristics of the charcoal record, fire event reconstruction and pollen diversity indices in these zones were described as follows. In order to make the link with the published paper based on pollen data (Xiao et al., 2015), the pollen zonation (from TCQH-1 to TCQH-7) was kept in Figure 2.

Zone TCCC-1 (18.5-15.0 ka), corresponding to the pollen subzones TCQH-1a and TCQH-1b: Charcoal concentration and CHAR (including BCHAR) in this zone were relatively high. Charcoal concentration averaged 585.6 particles/cm³. CHAR ranged from 0 to 72.4 particles/cm²/a with an average of 16.9 particles/cm²/a. 19 fire episodes were registered by charcoal peaks. Peak magnitude varied greatly from 32.6 to 2189.2 particles/cm²/peak with an average of 446.8 particles/cm²/peak. Fire frequency ranged from 2.4 to 7.4 episodes/ka with an average of 4.9 episodes/ka. Palynological richness index was very low (mean of 53) and Simpson's reciprocal index was relatively low (mean 9.1). The vegetation type during the period was semi-humid evergreen broadleaved forest dominated by evergreen oaks with relatively more dry-tolerant herbs such as *Artemisia* and *Chenopodiaceae* (Xiao et al., 2015).

Zone TCCC-2 (15.0-13.0 ka), corresponding to the pollen subzones TCQH-1c and TCQH-2a: Charcoal concentration and CHAR decreased markedly, averaging 114.5 (ranging from 6.7 to 412.3) particles/cm³ and 5.2 (ranging from 0.1 to 21.4) particles/cm²/a, respectively. Only one significant fire episode was noted in the bottom of this zone (peak magnitude: 58.4 particles/cm²/ peak) and two fire episodes were registered in the top of this zone (peak magnitudes are both at 63 particles/cm²/episode). Fire frequency declined first from 5.7 episodes/ka to 0.2 episodes/ka and then increased to 5.1 episodes/ka with an average of 2.3 episodes/ka. Palynological richness index increased markedly, averaging 59. Simpson's reciprocal index increased first to 12.2, then decreased to an average of 8.2. In this zone, the vegetation type was still semi-humid evergreen broadleaved forest, but the dominant plant species evergreen oaks retreated first (in the pollen subzone TCQH-1c) and then expanded gradually (in the pollen subzone TCQH-2a), whereas *Alnus* expanded first (in the pollen subzone TCQH-1c) and then decreased (in the pollen subzone TCQH-2a),

and dry-tolerant herbs (e.g. *Artemisia*) decreased evidently (Xiao et al., 2015).

Zone TCCC-3 (13.0-11.5 ka), corresponding to the pollen subzone TCQH-2b: This zone had the highest charcoal concentration and CHAR for the entire core, averaging 636.2 (ranging from 92.3 to 1806.2) particles/cm³ and 25.1 (ranging from 0.4 to 67.7) particles/cm²/a, respectively. Fire episodes occurred frequently, and the magnitudes of CHAR peaks average 426.4 particles/cm²/peak, ranging from 0.02 to 1984.4 particles/cm²/peak. Fire frequency was the highest for the profile, average 9.2 episodes/ka. In this zone, palynological richness and Simpson's reciprocal indices were relatively low, averaging 57 and 7.5, respectively. The vegetation type during the period was semi-humid evergreen broadleaved forest dominated by evergreen oaks with low *Artemisia* (Xiao et al., 2015).

Zone TCCC-4 (11.5-4.3 ka), corresponding to the pollen zones TCQH-3, TCQH-4, and TCQH-5: Charcoal concentration and CHAR remained very low in this zone. Average charcoal concentration was 113.8 particles/cm³. CHAR values ranged from 0 to 31.1 particles/cm²/a with an average of 4.1 particles/cm²/a. Three fire episodes were registered in the lower part of this zone (at 11.3, 10.4 and 10.2 ka, respectively) with low peak magnitudes (253.5, 32.7 and 29.3 particles/cm²/peak, respectively). In addition, three fire episodes were registered at ca. 6.7, 5.8 and 5.7 ka with peak magnitudes of 18.3, 212.7 and 417.1 particles/cm²/peak, respectively. Fire frequency was very low with an average of 1.1 episodes/ka. Palynological richness and Simpson's reciprocal indices were relatively high as a whole (averaging 70 and 11.6, respectively), and their highest values occurred during the period 10.4-8.5 ka. The vegetation type during the period changed gradually from semi-humid evergreen broadleaved forest to monsoon evergreen broadleaved forest dominated by *Lithocarpus/Castanopsis*, evergreen oaks and tropical ~~trees and shrubs~~ (Xiao et al., 2015).

Zone TCCC-5 (4.3-0.8 ka) (corresponding to nearly the pollen zone TCQH-6) was characterized by a marked increase in charcoal concentration and CHAR compared with Zone TCCC-4, averaging 589.7 particles/cm³ and 23.9 (ranging from 0 to 122.2) particles/cm²/a, respectively. Ten fire episodes were noted in the zone. Peak magnitude varied from 26.3 to 939.4 particles/cm²/peak (mean of 303.4 particles/cm²/peak). Fire frequency averaged 2.6 episodes/ka, ranging from 0.7 to 4.8 episodes/ka. Palynological richness index had no obvious changes (mean of 68) compared with the previous zone, while Simpson's reciprocal index decreased rapidly (mean of 9.1). In this zone, the primary evergreen broadleaved forest was rapidly replaced by deciduous broadleaved forest dominated by *Alnus* (Xiao et al., 2015).

Zone TCCC-6 (after 0.8 ka), corresponding to nearly the pollen zone TCQH-7: Charcoal concentration was very low, averaging 62.3 particles/cm³. CHAR (including BCHAR) first decreased markedly to mean of 6.8 (ranging from 0.7 to 27.1) particles/cm²/a, then increased to mean of 58.8 particles/cm²/a since 1940 AD. Two fire episodes were registered at 0.3 ka and 1986 AD (peak magnitudes: 33.7 and 359.7 particles/cm²/peak), respectively. Fire frequency was relatively low, averaging 1.8 (ranging from 0.7 to 3.3) episodes/ka. Palynological richness index declined

删除的内容: arbors

markedly (mean of 62), whereas Simpson's reciprocal index increased (mean of 10.9). In this zone, the greater open vegetation was present in the region, the area of *Alnus* forest quickly decreased, and the proportion of tropical ~~trees and shrubs~~ declined, whereas the secondary semi-humid evergreen broadleaved forest recovered (Xiao et al., 2015).

删除的内容: arboreal plants

Palynological richness and Simpson's reciprocal indices indicate that relationship of plant richness and evenness is roughly positive before 4.3 ka, except that the increase of richness at 10.4 ka is slightly later than the increase of evenness at 11.5 ka. However, plant richness and evenness show an approximately inverse correlation after 4.3 ka.

5 Discussion

5.1 Fire history from Qinghai Lake

删除的内容: activity

The results of fire event reconstruction based on the macroscopic charcoal record from Qinghai Lake reveals fire frequency and peak magnitude were not constant over the last 18.5 ka in southwestern Yunnan Province. There are three periods with frequent and intensive fire episodes, occurring during 18.5-15.0 ka, 13.0-11.5 ka, and 4.3-0.8 ka. Between 15.0 and 13.0 ka, fire episodes first rapidly decreased in frequency and severity, then gradually increased. From 11.5 to 4.3 ka, fire frequency and severity was at a low level as a whole, and there were only six fire episodes with low severity at 11.3, 10.4, 10.2, 6.7, 5.8 and 5.7 ka. Between 0.8 ka and 1940 AD, only one weak fire episode ~~was~~ noted, and fire frequency and severity were relatively low. Since 1940 AD, due to the high sedimentation rate (Fig.2), CHAR (including BCHAR) increased markedly although the charcoal concentration was still very low, which indicates relatively severe fire activity.

删除的内容: that

删除的内容: s

删除的内容: were

The black carbon content of the same core reveals three periods of high fire activity: 18.5-15.0 ka BP, 13.0-11.5 ka BP, and 8.0~0.9 ka BP (Zhang et al., 2015b). Comparison of fire activity results revealed by the two proxies shows that the start and end times of the first two periods of high fire activity are consistent, whereas the start times of the last period of high fire activity are different. The pollen record reveals that vegetation type was monsoon evergreen broadleaved forest dominated by *Castanopsis/Lithocarpus*, and the climate was warm and humid during the period 8.5-4.3 ka BP (Xiao et al., 2015). ~~Carbonized plant remains can be distinguished when macroscopic charcoal particles are counted under the stereomicroscope, whereas they cannot be separated when black carbon is measured. Differential rates of decomposition and plant carbonization may occur during periods of high plant productivity, for example during warm and humid climate periods, and this~~ may result in the different fire activity results during the period ~8.0-4.3 ka BP.

删除的内容: The warm and humid climate resulted in high biomass productivity, which may make plant remains fallen into the lake be not completely decomposed and be partly carbonized. The c

删除的内容: These

5.2 Regional climate changes in the southwest monsoon region

From the pollen record in Qinghai Lake, standardized data of *Lithocarpus/Castanopsis* (taxa indicating ~~warm and~~

删除的内容: a

humid conditions), evergreen oak (indicating relatively temperate conditions), and herb (indicating relatively dry conditions) pollen percentages are selected as a synthetic climate proxy (Fig. 3d, Xiao et al., 2015). At the same time, the DCA axis 1 sample scores of pollen data from Qinghai Lake may also act as a climate proxy indicating climate changes from relatively cool and moderately dry conditions to warm and humid conditions from high scores to low scores (Fig. 3e, Xiao et al., 2015). The recent studies (Xiao et al., 2014a, b) suggest that the PCA axis 1 sample scores of the pollen data from Tiancai Lake in northwestern Yunnan Province can be mainly interpreted as temperature change from warm to cold conditions from low scores to high scores, respectively (Fig. 3f). From the pollen record of Lugu Lake located on the boundary between Yunnan and Sichuan Provinces in southwest China, standardized data of *Tsuga* (indicating humid conditions), *Betula* (indicating relatively temperate conditions), and herb pollen percentages are selected as a synthetic climatic proxy (Fig. 3g, Wang, 2012). These pollen proxies from Qinghai Lake (Fig. 3d, e), Tiancai Lake (Fig. 3f), and Lugu Lake (Fig. 3g) reveal regional climatic changes since 18.5 ka in western Yunnan Province that included two cold events (the Heinrich Event 1 (H1) and the Younger Dryas cold event (YD)) and a warm period (the Bølling/Allerød warm period, B/A) during the last deglaciation. Because the different responses of the three study sites located in different latitudes and altitudes to global climate change and age uncertainty, the H1, B/A, and YD are considered to have occurred during the periods $17.5 \pm 0.5 \sim 15.4 \pm 0.4$ ka, $14.4 \pm 0.2 \sim 12.9 \pm 0.1$ ka, and $12.9 \pm 0.1 \sim 11.5$ ka in western Yunnan Province, respectively.

The time of the H1 is almost consistent with the date defined by Sanchez-Goni and Harrison (2010, HS1 is between 18 to 15.6 ka). The B/A and YD are in good agreement in timing and duration with the B/A between 14.6 and 12.8 ka given by Grootes and Stuiver (1999) and the YD between approximately 12.8 and 11.5 ka given by Muscheler et al. (2008). The Holocene was clearly identified to begin at 11.5 ka. From 10.4 ka, the temperature and precipitation increased rapidly. The Holocene climatic optimum (HCO) occurred during the period $8.5 \pm 0.3 \sim 3.8 \pm 0.5$ ka. After 3.8 ± 0.5 ka the climate became cooler and drier, which may be accompanied by signals of human activity such as slash and burn (Xiao et al., 2015). This climatic change tendency is also recorded in other regions affected by the southwest monsoon, such as the $\delta^{18}\text{O}$ records from core NIOP905 in the western Arabian Sea (Fig. 3h) (Huguet et al., 2006) and core KL126 in the Bay of Bengal (Kudrass et al., 2001), and the sediment colour record from northeastern Arabian Sea (Deplazes et al., 2013).

5.3 Climate forcing on fire occurrences

Comparing the fire activity record from Qinghai Lake with the regional climate records in western Yunnan Province and the southwestern monsoon region (Fig. 3), it appears that the frequent and intensive fire activity during the periods 18.5-15.0 ka and 13.0-11.5 ka corresponded to the relatively cold period before the H1, during the H1, and during the

删除的内容: environment

删除的内容: environment

删除的内容: climate

删除的内容: condition

删除的内容:

删除的内容: environment

删除的内容: environment

删除的内容: , respectively

删除的内容: evidently

删除的内容: and

YD. The low fire activity between 15.0 and 13.0 ka corresponded to a period of slight warming (between H1 and B/A) and the B/A warm period. The rare and weak fire activity between 11.5 and 4.3 ka corresponded to the gradual increases in the temperature and precipitation from 11.5 to 8.5 ka and the Holocene climatic optimum between 8.5 and 4.3 ka. Under the background of weak fire activity as a whole during the period 11.5-4.3 ka, six fire episodes at 11.3, 10.4, 10.2, 6.7, 5.8 and 5.7 ka may indicate six significant dry or highly seasonal rainfall periods. However, the abrupt cold event at 8.2 ka recorded in other palaeoclimate records from the southwest monsoon region (Kudrass et al., 2001; Dykoski et al., 2005) was not marked in the charcoal record. The reason may be that on one the hand, the relatively low temperature was unfavourable to fuel desiccation, but it is more important that the climate was not too dry or rainfall seasonality was relatively low in the study area, because drought is the key factor influencing fire occurrences in southwestern China (Gu et al., 2008).

删除的内容: , respectively

Paleofire studies at global scales reveal that high fire activity occurred during warm interstadials or interglacials, and low fire activity occurred during cold stadials or glacials (Power et al., 2008; Daniaux et al., 2010; Mooney et al., 2011). These studies consider that the overall reduction in biomass was a severe constraint on fire regimes during the glacial. Namely, cold and dry climatic conditions influence plant biomass, therefore available fuel for fire is limited. As the study area is located in the southern subtropics, warm and humid climate conditions lead to diverse vegetation types, which means that climate change in a certain range may only result in changes in proportion of dominant trees or vegetation types, and may not cause obvious changes in plant biomass. Thus, the fuel biomass shall not be a constraining factor for fire activity in this study area, whereas the most important control factor of fire occurrence (or fire frequency) in the region is dry climate or high rainfall seasonality, particularly in the period prior to 4.3 ka, which is consistent with Gu et al. (2008)'s conclusion. In addition, some other paleofire studies in the monsoon region of China also suggest the same factor controlling fire activity as this study (Fig. 1a). The charcoal and pollen records from peat section at Qindeli, northeastern China show that the frequency and severity of fire are high in the dry period and low in the wet period (Li et al., 2005). A well-dated peat profile with high resolution charcoal and pollen records in the profile HE from the Sanjiang Plain, northeastern China indicates that low frequency regional and local fires responded to the strong summer monsoon during the interval ~6.0-4.5 ka, and then the fire frequencies increased evidently with the decline of the summer monsoon (Zhang et al., 2015a). The pollen and charcoal records from a Jinchuan peat (northeastern China) indicate that a natural origin for fire event 1 (5.1 ka) was probably facilitated by drying environmental conditions and fire event 2 (1.3 ka) was caused by clearing (Jiang et al., 2008). The charcoal records in the Holocene loess-soil sequences (XJN: Xujianian, ETC: Ertangcun, JYC: Jiayangcun, and DXF: Dongxiafeng) over the southern Loess Plateau of China suggest that local wildfires occurred frequently during the late last glacial period and the early Holocene before 8.5 ka. During the Holocene climatic optimum between 8.5 ka and 3.1 ka, natural wildfires were largely reduced. Levels of biomass burning were very high during the late Holocene, when the climate

删除的内容: severely on

删除的内容: rich

删除的内容: disclose

became drier and historical land-use became more intensive (Huang et al., 2006). The charcoal and pollen records from the two deep sea cores 17940 (taken by Sino-German joint cruise “SONNE-95” in 1994) (Sun et al., 2000) and 1144 (taken by ODP Leg 184 in 1999) (Luo et al., 2001) in the northern part of the South China Sea disclose that the high strength and frequency of natural fire corresponded to the drier climate during glacial or stadial. This relationship between climate and fire in the monsoon region of China is different from that at a global scale (Power et al., 2008; Daniau et al., 2010; Mooney et al., 2011), which may reveal that regional differences in climatic conditions determine vegetation type, fuel biomass and fire weather. However, it provides regional evidence for understanding the relationship between climate and fire that may be different under different climate conditions.

删除的内容: the

5.4 Possible influence of human activity on fire activity

Archaeological records from Yunnan Province show that Neolithic culture began to emerge at around 4 ka or a little earlier (Han, 1981; Li, 2004). The pollen assemblage from Qinghai Lake shows the obvious increases in Poaceae and *Artemisia* pollen percentages and the rapid degradation of the primary evergreen broadleaved forest from 4.3 ka (Xiao et al., 2015). Poaceae grains with diameters greater than 40 μm were usually classified as cereal-type (Lamb et al., 2003). In the study, Poaceae grains (>40 μm) began to occur at 18.5 ka and its pollen percentages had no obvious change (Fig. SF3), indicating that Poaceae grains (>40 μm) didn't reflect changes of human activity and the criterion of cereal pollen (Poaceae grains with diameters greater than 40 μm) may not be applicable in this study area. Studies on the characteristics of modern Poaceae pollen in Yunnan Province are needed for redefining the criterion of cereal pollen for this study area. Because cereal pollen was not separated from Poaceae pollen, we cannot rule out the possibility of increase in human activity when Poaceae pollen percentages increased. Thus, the obvious increase in Poaceae pollen percentages, combined with the rapid degradation of the primary evergreen broadleaved forest and the archaeological records, reveal that human activity may have influenced vegetation changes from 4.3 ka in the study area. This raises the possibility that superimposed influence of human activities such as forest clearance and agricultural cultivation and climatic cooling and drying may have influenced the frequent and strong fire activity between 4.3 and 0.8 ka.

删除的内容: be

Historical documents show that the first administrative centre (Ruanhua Fu) was established in the early stage of Dali Kingdom (1.01–0.7 ka) in Tengchong (Editorial Board of Tengchong County Annals, 1995). Subsequently, population immigration and implement of the state collective farming system accelerated deforestation and reclaimed farmland, which prompted intensification of agriculture (Editorial Board of Tengchong County Annals, 1995). The pollen record from Qinghai Lake suggests greater open vegetation presented in the region after 1.0 ka (Xiao et al., 2015). Due to the decrease of forest area caused by human activity, the capacity for soil and water conservation declined, resulting in significant soil erosion. The coeval rapid increase in sediment accumulation rate may be caused

删除的内容: result in

by loss of forest cover and increased soil erosion, which diluted the charcoal input and resulted in low charcoal concentration. The same low CHAR revealed the relatively low fire frequency and severity between 0.8 ka and 1940 AD, which may be caused by human suppression of fire in an intensively managed agricultural and urbanized environment. The relatively intensive and frequent fire activity since 1940 AD corresponds to burning and plundering events during World War II and subsequently rapid economic development at the expense of vegetation.

删除的内容: II

5.5 The relationship between fire activity and vegetation

Climate exerts the dominant control on the spatial distribution of the major vegetation types on a global scale. In the study area, when the climate is warmer and more humid than today, the proportion of hygrophilous and thermophilous components in the forest increases, and even vegetation shifts gradually to a monsoon evergreen broad-leaved forest or tropical rainforest or monsoon forest. When the climate is cooler and relatively drier than the present day, the proportion of tolerant-dry components in the forest increases, and even vegetation changes gradually into a mid-montane humid evergreen broadleaved forest (Wu et al., 1987). In addition to the dominant control of climate on vegetation, fire was also one of important disturbance factors in vegetation changes. Past effects of fire on vegetation may be revealed by correlations between charcoal and pollen records (Tinner et al., 1999, 2005; Colombaroli et al., 2007). In this study, vegetation types, pollen diversity indices and four main arboreal pollen types (tropical trees and shrubs, *Lithocarpus/Castanopsis*, evergreen oaks and *Alnus*) with the highest percentages in the pollen assemblage from Qinghai Lake were selected to discuss vegetation responses to fire by comparing them with the charcoal record (Fig. 2).

删除的内容: The c

删除的内容: arbors

Among the three periods with high fire activity, two periods with high fire activity occurred in semi-humid evergreen broadleaved forest, and the other occurred in deciduous broadleaved forest dominated by *Alnus*. Fire activity was unusual or weak in the course of vegetation shifting from semi-humid evergreen broadleaved forest to monsoon evergreen broadleaved forest during the period 11.5-8.5 ka and in monsoon evergreen broadleaved forest during 8.5-4.3 ka. These are consistent with the modern results on the highest rates of forest loss due to forest fire in semi-humid evergreen broadleaved forest and relatively low rates of forest loss in monsoon evergreen broadleaved forest (Chen et al., 2012).

删除的内容: the

删除的内容: rates

删除的内容: rates

Frequent and severe fire activity during the periods 18.5-15.0 ka and 13.0-11.5 ka was linked to high pollen percentages of evergreen oaks, indicating that evergreen oaks are flammable plants, which is consistent with *Quercus* spp. identified as flammable class in the trade standard for forestry in People's Republic of China (State Forestry Administration of China, 2008). When the high fire activity began at 18.5 and 13.0 ka, evergreen oak pollen percentages declined gradually; whereas when the high fire activity ended at 15.0 and 11.5 ka, evergreen oak pollen percentages continued to decline for a short time after going through frequent and strong fire events, indicating that

evergreen oaks are able to withstand a degree of burning and continue growing despite gradual damage from fires. Thus, they are relatively fire-tolerant taxa. There are some different opinions about the responses of evergreen oaks to fire events. Trabaud (1990) suggests that evergreen oak can survive fire and can even re-sprout vigorously afterwards. Conedera and Tinner (2000) show that *Quercus ilex* is highly sensitive to fire disturbance under certain circumstances based on ecological studies. Reyes and Casal (2006) consider that fire has little negative effect on evergreen oak germination. Colombaroli et al. (2007) suggest that evergreen oak declines synchronously with fire-sensitive *Abies*. The reason for different responses of evergreen oak to fire events is likely different environment and evolutionary pressures for evergreen oak.

In this trade standard (State Forestry Administration of China, 2008), *Alnus* spp. is identified as a nonflammable class, and the results of combustion experiments of *Alnus nepalensis* also suggest that it is a nonflammable tree species (Tian et al., 2001; Li et al., 2009). Observations after an intensive fire on 17 April, 1995 in Anning County of Yunnan Province found that a patch of *Alnus nepalensis* forest was not burned during the fire, which is further support for the fire resistant nature of *Alnus nepalensis-dominated* forest (Liu et al., 1996). However, low-density *Alnus nepalensis* forest was completely burned in this fire suggesting that density of *Alnus* forest is a key factor in determining its fire resistant capacity (Liu et al., 1996), even if the results of combustion experiments suggest that it is a nonflammable tree species. In our study, high *Alnus* pollen percentages correspond to high fire activity during the period 4.3-0.8 ka, which may be because *Alnus* forest around Qinghai Lake during the period 4.3-0.8 ka was relatively low density or it was not pure *Alnus* forest. Modern pollen rain results in southwestern China show that *Alnus* pollen percentages are more than 70% in a patch of *Alnus* forest (Xiao, unpublished). The abundance of *Alnus* promptly increased after the endings of frequent and strong fire activity before 4.3 ka, indicating that *Alnus* is a fire-adapted taxon. The adaptability of *Alnus* to survive fire events has been detected in the other regions such as Mediterranean area (Lago di Massaciuccoli, Tuscany, Italy) and the Oregon Coast Range of USA (Colombaroli et al., 2007; Long et al., 2007). The responses of *Alnus* to fire before 4.3 ka and after 4.3 ka are different, which may be influenced by human activity. *Alnus*, as a pioneer plant, responded rapidly to human activity from 4.3 ka (at the beginning of the last high fire phase) and increased prior to the end of the frequent and intensive fire period (at 0.8 ka). The marked reduction of *Alnus* at ~1.0 ka is probably caused by selective clearance of the forest by people (Xiao et al., 2015).

The very low fire frequency and severity between 11.5 and 4.3 ka corresponded to the gradual increase in *Lithocarpus/Castanopsis* and tropical arboreal pollen percentages, and high *Lithocarpus/Castanopsis* and tropical arboreal pollen percentages. When the frequent and intensive fire activity began at 4.3 ka, *Lithocarpus/Castanopsis* and tropical arboreal pollen percentages declined rapidly. These suggest that the forests dominated by *Lithocarpus/Castanopsis* and/or tropical trees and shrubs are not easy to ignite, which is in good agreement with the results of combustion experiments suggesting that *Castanopsis* spp., *Schima superba*, *Camellia oleifera*, *Altingia*

删除的内容: also

删除的内容: The o

删除的内容: finds

删除的内容: natural

删除的内容: after undergoing

删除的内容: this

删除的内容: indicates that

删除的内容: ability

删除的内容: nepalensis

删除的内容: natural

删除的内容: is very strong

删除的内容: The further observation shows that

删除的内容: . These observation results indicate

删除的内容: to decide

删除的内容: ability

删除的内容: approved it, which

删除的内容: s

删除的内容: result

删除的内容: felling of human

删除的内容: arbors

gracilipes, *Symplocos setchuensis*, *Ficus microcarpa*, *Eurya macartneyi*, and *Pentaphragax euryoides* are nonflammable tree species. However, frequent and intensive fire resulted in rapid decreases in abundance of *Lithocarpus/Castanopsis* and tropical trees and shrubs. Referring to Tinner et al.' (2000) definition of fire-sensitive taxa, we consider that *Lithocarpus/Castanopsis* and tropical trees and shrubs are fire-sensitive taxa in the study area.

5 Our results show that high fire-episode frequency occurs in conjunction with forests comprised primarily of fire-adapted taxa and lower fire-episode frequency is associated with forest dominated by fire-sensitive taxa, which is consistent with the Oregon Coast Range, USA, study (Long et al., 2007).

5.6 Dynamics of plant diversity

10 A comparison of fire activity and pollen diversity indices suggests that post-fire reactions of plant diversity before 4.3 ka and after 4.3 ka are different. Before 4.3 ka, the high fire activity corresponded to relatively low plant diversity (including two aspects of richness and evenness), whereas the very low fire activity corresponded to relatively high plant diversity. After high fire activity ended at 15.0 ka, plant richness and evenness increased. The reason may be that some fire-sensitive species and some thermophilous elements responding to the obvious increase of temperature at this time occurred, resulting in the increase of richness. When high fire activity ended at 11.5 ka, plant evenness increased and plant richness had no obvious change. The possible reason why plant richness did not increase at this time is that the number of new types for fire-sensitive species and the number of disappearing types for fire-adapted species may be roughly equal, while a slight increase in temperature at this time is not sufficient to promote the emergence of species adapted to warmer temperatures during the late glacial transition. All these indicate that fire is not favourable to plant diversity, and may degrade plant diversity in the study area. A similar response of plant diversity to fires is documented in Southern France that floristic richness increased markedly after fire (Trabaud and Lepart, 1980). However, the other studies suggest that there is a significant loss of plant diversity after fires in southern Switzerland (Tinner et al., 1999) and northern Tuscany of Italy (Colombaroli et al., 2007). The reason for this apparent contradiction is that forest ecosystems are naturally fire-sensitive, because fire tends to destroy the large biomass investments of trees. In contrast, fire-adapted communities that might have originated partly as a consequence of forest disruption may be favoured or even preserved by fire incidence (Colombaroli et al., 2007).

25 For the entire profile, the highest plant richness and evenness synchronously occurred during the period 10.4-8.5 ka when the temperature and precipitation increased evidently. During this period different plant species (including trees and herbs) were competing for habitat space and dominant species were not evident. Plant richness and evenness declined slightly during the climatic optimum from 8.5 to 4.3 ka. During this period, the forest was dominated by a few warm and moist species such as *Lithocarpus/Castanopsis*.

30 After 4.3 ka, the high fire activity (during the period 4.3-0.8 ka) was linked to relatively high plant richness and

删除的内容: led to

删除的内容: arbors

删除的内容: '

删除的内容: arbors

删除的内容: study at the

删除的内容: of

删除的内容: evidently

删除的内容: At the same time, proportion of a few dominant fire-adapted or fire-tolerant species declined, resulting in the decline of concentricity and the increase of evenness.

删除的内容: warmer

删除的内容: unfavourable

删除的内容: be a destroyer of

删除的内容: And then, p

删除的内容: when

删除的内容: e is

删除的内容: during the period

删除的内容: -

删除的内容: These indicate that an evident ameliorating climate was more favorable to plant diversity. Because different plant species (including trees and herbs) were competing for habitat space and dominant species was not obvious during the course of the gradual increases in the temperature and humidity. The optimum climate conditions made the forest ecosystem be in a steady state.

删除的内容: the

relatively low plant evenness. The possible reason is that the fire-adapted pioneer plants (such as *Alnus*) responded promptly to disturbance of human activity from 4.3 ka and became the dominant species before the end of high fire activity. However, the intensity of human activity at this period, as well as the frequency and severity of fire, is not enough to promote disappearance of fire-sensitive or disturbance-sensitive plant species. The low fire activity corresponded to the decrease of richness and the increase of evenness, which may be caused by a stronger disturbance of human activity such as deforestation and selective clearance, resulting in some disturbance-sensitive plant species disappearing and proportion of a few dominant species declining. Overall, human activity is likely to be the main driver of altered fire regimes after 4.3 ka and the response of plant diversity (richness and evenness) during this period.

删除的内容: ,

删除的内容: the

5.7 Implications for management strategy for forest fires

Combustibility of different forest types and a fire-sensitivity ranking for the main plant types are helpful for forest management and restoration after fires. In the study area, semi-humid evergreen broadleaved forest dominated by evergreen oaks is flammable. In order to prevent potentially destructive fires in the future, there is a need to pay greater attention to the origins and control of fire events in these forests. Once semi-humid evergreen broadleaved forest dominated by evergreen oaks is burned out, this forest needs a longer time to regenerate after fires even if it is not influenced by human activity. *Alnus* is a nonflammable tree species and has the potential to be used as a fire suppressant. However, if *Alnus* is used to prevent fires, it is necessary to plant pure *Alnus* forest, because fire suppressant capacity of low-density *Alnus* forest or mixed-*Alnus* forest is relatively weak. In addition, *Alnus* forest will regenerate relatively quickly after fires if it is not impacted by further human activity. The forests dominated by *Lithocarpus/Castanopsis* and/or tropical trees and shrubs are not easy to ignite because of their relative low inflammability. However, if frequent and intensive fire events occur in or adjacent to the forests dominated by *Lithocarpus/Castanopsis* and/or tropical trees and shrubs there is a greater risk for these forests to be impacted by major fire events. Furthermore, the forests dominated by *Lithocarpus/Castanopsis* and/or tropical trees and shrubs do not regenerate well after fires highlighting the need to prevent or suppress fires in these highly vulnerable forest types.

删除的内容: .

The possible reason for the different post-fire reactions of plant diversity and different relationship between richness and evenness before 4.3 ka and after 4.3 ka is that vegetation was influenced by human activity after 4.3 ka.

删除的内容: to

删除的内容: this

删除的内容: restore

删除的内容: resistant ability

删除的内容: is easy to restore

删除的内容: cleared

删除的内容: Thus, *Alnus* is an ideal fire-resistant plant.

删除的内容: arbors

删除的内容: unflammability

删除的内容: arbors

删除的内容: arbors

删除的内容: are difficult to restore

删除的内容: unfavourable

删除的内容: may be a destroyer of

删除的内容: is a necessary

删除的内容: for forest fires

删除的内容: ,

删除的内容: e

删除的内容: and even kee

删除的内容: p

In our study area, fire is generally not favorable to plant diversity, and if it is of high enough frequency and intensity, fire may also deplete plant diversity. Thus, fire control and suppression may be one management strategy to maintain plant diversity in the study area, which will have the added benefit of reducing the risk of large forest fires and maintaining relatively high biodiversity in the future.

6 Conclusions

This study about linkages of fire history, climatic change, human activity, and vegetation demonstrates that fire was

mainly controlled by climate before 4.3 ka and by the combined actions of climate and humans after 4.3 ka. The frequent and intensive fire activity occurred under cold and moderately dry conditions or during the periods accompanied by human activity. Low fire activity occurred under warm and humid conditions or during the periods when temperature and humidity are increasing.

删除的内容: Unusual or weak

删除的内容: with

删除的内容: the

删除的内容: This relationship between climate and fire in the study area is different from that at a global scale.

删除的内容: arbors

删除的内容: arbors

5 Fire was an important disturbance factor in the vegetation changes and played an important role in the forest dynamics and characteristics of the flora around the study area. The comparisons between fire activity and vegetation reveal that evergreen oaks are flammable plants. The forests dominated by *Lithocarpus/Castanopsis* and/or tropical trees and shrubs are not easy to ignite. The combustibility of evergreen oaks, *Lithocarpus/Castanopsis* and tropical trees and shrubs is in good agreement with the results of combustion experiments of these plants. Although *Alnus* is a nonflammable tree species, high *Alnus* pollen percentages corresponded to high fire activity during the period 4.3-0.8 ka, which may be because the density of *Alnus* forest is a more important factor to decide its fire resistant ability. A fire-sensitivity ranking for main arboreal types in the study area shows that *Alnus* is a fire-adapted species; evergreen oaks are fire-tolerant taxa; *Lithocarpus/Castanopsis* and tropical trees and shrubs are fire-sensitive taxa. However, vegetation responses to fire after 4.3 ka are not consistent with that before 4.3 ka, which points to the possibility that vegetation and fire regimes were increasingly influenced by human activity after 4.3 ka. Before 4.3 ka, when vegetation was mainly influenced by climate dynamics, frequent and intensive fire activity reduced plant diversity, and plant diversity increased after fires. Fire control and suppression may be one management strategy to maintain plant diversity in the study area. Since vegetation was influenced by a mixture of natural processes and anthropogenic activity (after 4.3 ka), the post-fire responses of vegetation have changed and their relationships have become complex.

删除的内容: plant

删除的内容: is

删除的内容: arbors

删除的内容: natural controls

删除的内容: is

删除的内容: a necessary

删除的内容: for forest fires

20 Our results are important for enhancing our predictions of the influence of climatic change on future fire activity and making appropriate management policies for forest ecosystems. However, these results came only from a single lake site, and it is necessary that further lacustrine sites from southwestern China are studied to improve our understanding of vegetation-climate-fire interactions.

删除的内容: because

25 *Acknowledgments.* This research was financially supported by the Program of Global Change and Mitigation (2016YFA0600501), the National Natural Science Foundation of China (41272188, 41572149 and 41372184). We thank Prof. Houyuan Lu and Xiangdong Yang for giving us some constructive advice, and Dr. Shuchun Yao and Yong Wang for doing fieldwork.

References

30 Ali, A. A., Blarquez, O., Girardin, M. P., Hély, C., Tinquaut, F., Guellab, A. E., Valsecchi, V., Terrier, A., Bremond, L., Genries, A., Gauthier, S., and Bergeron, Y.: Control of the multimillennial wildfire size in boreal North America by spring climatic conditions,

- Proc. Natl. Acad. Sci., 109(51), 20966–20970, 2012.
- Ali, A. A., Carcaillet, C., and Bergeron, Y.: Long-term fire frequency variability in the eastern Canadian boreal forest: the influences of climate vs. local factors, *Global Change Biol.*, 15, 1230–1241, 2009.
- Arno, S. F. and Sneek, K. M.: A method for determining fire history in coniferous forests of the mountain West. USDA Forest Service General Technical Report, Intermountain Forest and Range Experiment Station (INT-42), 28, 1977.
- 5 Bake, W. L. and Dugan, A. J.: Fire-history implications of fire scarring, *Can. J. Forest Res.*, 43(10), 951-962, 2013.
- Birks, H. J. B. and Line, J. M.: The use of rarefaction analysis for estimating palynological richness from Quaternary pollen-analytical data, *Holocene*, 2(1), 1-10, 1992.
- Blaauw, M. and Christen, J. A.: Flexible paleoclimate age–depth models using an autoregressive gamma process, *Bayesian Anal.*, 6, 457–474, 2011.
- 10 Brunelle, A. and Whitlock, C.: Postglacial fire, vegetation, and climate history in the Clearwater Range, Northern Idaho, USA, *Quaternary Res.*, 60, 307-318, 2003.
- Chen, F., Lin, X. D., Niu, S. K., Wang, S., and Li, D.: Influence of climate change on forest fire in Yunnan Province, southwestern China, *Journal of Beijing Forestry University*, 34(6), 7-15, 2012 (in Chinese).
- 15 Colombaroli, D., Marchetto, A., and Tinner, W.: Long-term interactions between Mediterranean climate, vegetation and fire regime at Lago di Massaciuccoli (Tuscany, Italy), *J. Ecol.*, 95, 755–770, 2007.
- Conedera, M. and Tinner, W.: The interaction between forest fires and human activity in southern Switzerland. *Biomass Burning and its Inter-Relationships with the Climate System* (eds J.L. Innes, M. Beniston and M.M. Verstraete), pp. 247–261. Kluwer, Dordrecht. 2000.
- 20 Daniau, A. L., Harrison, S. P., and Bartlein, P. J.: Fire regimes during the Last Glacial, *Quaternary Sci. Rev.*, 29, 2918-2930, 2010.
- de Porras, M. E., Maldonado, A., Quintana, F. A., Martel-Cea, A., Reyes, O., and Méndez, C.: Environmental and climatic changes in central Chilean Patagonia since the Late Glacial (Mallín El Embudo, 44 S), *Clim. Past*, 10, 1063–1078, 2014.
- Deplazes, G., Lückge, A., Peterson, L. C., Timmermann, A., Hamann, Y., Hughen, K. A., Röhl, U., Laj, C., Cane, M. A., Sigman, D. M., and Haug, G.H.: Links between tropical rainfall and North Atlantic climate during the last glacial period, *Nat. Geosci.*, 6, 213-217, 2013.
- 25 Dykoski, C. A., Edwards, R. L., Cheng, H., Yuan, D. X., Cai, Y. J., Zhang, M. L., Lin, Y. S., Qing, J. M., An, Z. S., and Revenaugh, J.: A high-resolution, absolute-dated Holocene and deglacial Asian monsoon record from Dongge Cave, China, *Earth Planet. Sc. Lett.*, 233, 71–86, 2005.
- Editorial Board of Tengchong County Annals: *Tengchong County Annals*. ZhongHua Publishing House, Beijing, China, 1995 (in Chinese).
- 30 Gavin, D. G., Hallett, D. J., Hu, F. S., Lertzman, K. P., Prichard, S. J., Brown, K. J., Lynch, J. A., Bartlein, P., and Peterson, D. L.: Forest fire and climate change in western North America: insights from sediment charcoal records, *Front. Ecol. Environ.*, 5, 499–506, 2007.
- Grootes, P. M. and Stuiver, M.: GISP2 Oxygen Isotope Data. <http://dx.doi.org/10.1594/PANGAEA.56094>, 1999.
- Grosjean, M., Santoro, C. M., Thompson, L. G., Núñez, L., and Standen, V. G.: Mid-Holocene climate and culture change in the South Central Andes. *Climate change and cultural dynamics: a global perspective on mid-Holocene transitions*, (eds D. G. Anderson, K. A. Maasch and D. H. Sandweiss), pp. 51-115, Academic Press, 68, 2007.
- 35 Gu, Y. S., Pearsall, D. M., Xie, S. C., and Yu, J.X.: Vegetation and fire history of a Chinese site in southern tropical Xishuangbanna

- derived from phytolith and charcoal records from Holocene sediments, *J. Biogeogr.*, 35, 325–341, 2008.
- Han, Y. M., Marlon, J. R., Cao, J. J., Jin, Z. D., and An, Z. S.: Holocene linkages between char, soot, biomass burning and climate from Lake Daihai, China, *Global Biogeochem. Cy.*, 26, GB4017, doi:10.1029/2011GB004197, 2012.
- 5 Han, Y. M., Peteet, D. M., Arimoto, R., Cao, J. J., An, Z. S., Sritairat, S., and Yan, B. Z.: Climate and Fuel Controls on North American Paleofires: Smoldering to Flaming in the Late-glacial-Holocene Transition, *Sci. Rep.*, DOI: 10.1038/srep20719, 2016.
- Han, Y.: On Neolithic cultures of Yunnan. Contributions to the 30th anniversary of the Yunnan Museum, Kunming, China, 1981 (in Chinese).
- Harrison, S. P., Marlon, J. R., and Bartlein, P. J.: Fire in the earth system. In: Dodson, J. (Eds.), *Changing Climates, Earth Systems and Society*, pp. 21-47. Springer, Dordrecht, The Netherlands, 2010.
- 10 Hicks, S. and Hyvärinen, H.: Pollen influx values measured in different sedimentary environments and their palaeoecological implications, *Grana*, 38, 228-242, 1999.
- Higuera, P. E., Brubaker, L. B., Anderson, P. M., Brown, T. A., Kennedy, A. T., and Hu, F. S.: Frequent fires in ancient shrub tundra: implications of paleorecords for arctic environmental change, *PLoS One*, 3, e0001744, 2008.
- Holz, A., Haberle, S., Veblen, T. T., De Pol-Holz, R., and Southon, J.: Fire history in western Patagonia from paired tree-ring fire-scar and charcoal records, *Clim. Past*, 8, 451–466, 2012.
- 15 Huang, C. C., Pang, J. L., Chen, S. E., Su, H. X., Han, J., Cao, Y. F., Zhao, W. Y., and Tan, Z. H.: Charcoal records of fire history in the Holocene loess–soil sequences over the southern Loess Plateau of China, *Palaeogeogr. Palaeoclimatol.*, 239, 28–44, 2006.
- Huerta, M. A., Whitlock, C., and Yale, J.: Holocene vegetation–fire–climate linkages in northern Yellowstone National Park, USA, *Palaeogeogr. Palaeoclimatol.*, 271, 170-181, 2009.
- 20 Huguet, C., Kim, J. H., Damsté, J. S. S., and Schouten, S.: Reconstruction of sea surface temperature variations in the Arabian Sea over the last 23 kyr using organic proxies (TEX₈₆ and UK'₃₇), *Paleoceanography*, 21, PA3003, 2006.
- Jiang, W. Y., Leroy, S. A. G., Lglé, N., Chu, G. Q., Wang, L., and Liu, J. Q.: Natural and anthropogenic forest fires recorded in the Holocene pollen record from a Jinchuan peat bog, northeastern China, *Palaeogeogr. Palaeoclimatol.*, 261, 47–57, 2008.
- Kloster, S., Brücher, T., Brovkin, V., and Wilkenskeld, S.: Controls on fire activity over the Holocene, *Clim. Past*, 11, 781–788, 2015.
- 25 Kudrass, H. R., Hofmann, A., Doose, H., Emeis, K., and Erlenkeuser, H.: Modulation and amplification of climatic changes in the Northern Hemisphere by the Indian summer monsoon during the past 80 k.y., *Geology*, 29, 63–66, 2001.
- Lamb, H., Darbyshire, I., and Verschuren, D.: Vegetation response to rainfall variation and human impact in central Kenya during the past 1100 years, *Holocene*, 13(2), 285-292, 2003.
- Le Page, Y., Pereira, J. M. C., Trigo, R., da Camara, C., Oom, D., and Mota, B.: Global fire activity patterns (1996–2006) and climatic influence: an analysis using the World Fire Atlas, *Atmos. Chem. Phys.*, 8, 1911-1924, doi:10.5194/acp-8-1911-2008, 2008.
- 30 Li, J., Mackay, A. W., Zhang, Y., and Li, J. J.: A 1000-year record of vegetation change and wildfire from maar lake Erlongwan in northeast China, *Quatern. Int.*, 290-291, 313-321, 2013.
- Li, K. S.: A summary of the main achievements of the mankind origin study and the prehistoric archaeology in Yunnan, *Social Sciences in Yunnan*, 2, 108-113, 2004 (in Chinese).
- 35 Li, S. Y., Luo, W. B., Shu, Q. T., Ma, C. L., Ma, A. L., and Zhang, Q. R.: Combustibility of 25 woody plants for selection of fire-resistant tree species in Kunming area, *Journal of Zhejiang Forestry College*, 26(3), 351-357, 2009 (in Chinese).
- Li, X. Q., Zhao, H. L., Yan, M. H., and Wang, S. Z.: Fire variations and Relationship among Fire and Vegetation and Climate during

- Holocene at Sanjiang Plain, Northeast China, *Scientia Geographica Sinica*, 25(2), 177-182, 2005 (in Chinese with English abstract).
- Liu, A. R., Wu, D. Y., and Li, L. J.: The study on fire resistance of *Alnus nepalensis* natural forest, *Forest Fire Prevention*, 1, 11-12, 1996 (in Chinese).
- 5 Long, C. J., Whitlock, C., and Bartlein, P. J.: Holocene vegetation and fire history of the Coast Range, western Oregon, USA, *Holocene*, 17(7), 917-926, 2007.
- Lu, Y. D.: Selection of tree species and main configuration mode for biological fire prevention belt in city, "Harmonious development of man and nature" *Green Forum*, 175-177, 2005.
- Luo, Y. L., Chen, H. C., Wu, G. X., and Sun, X. J.: Records of natural fire and climate history during the last three glacial-interglacial cycles around the South China Sea Charcoal record from the ODP 1144, *Sci. China Ser. D*, 44(10), 897-904, 2001.
- 10 Magurran, A. E.: *Ecological Diversity and Its Measurement*, New Jersey: Princeton University Press, 1988.
- McWethy, D. B., Higuera, P. E., Whitlock, C., Bowman, D. M. J. S., Cary, G. J., Haberle, S. G., Keane, R. E., Maxwell, B. D., McGlone, M. S., Perry, G. L. W., Wilmschurst, J. M., Holz, A., and Tepley, A. J.: A conceptual framework for predicting temperate ecosystem sensitivity to human impacts on fire regimes, *Global Ecol. Biogeogr.*, 22, 900-912, 2013.
- Mooney, S. D., Harrison, S. P., Bartlein, P. J., Daniau, A.-L., Stevenson, J., Brownlie, K. C., Buckman, S., Cupper, M., Luly, J., Black, M., 15 Colhoun, E., D'Costa, D., Dodson, J., Haberle, S., Hope, G. S., Kershaw, P., Kenyon, C., McKenzie, M., and Williams, N.: Late Quaternary fire regimes of Australasia, *Quaternary Sci. Rev.*, 30, 28-46, 2011.
- Morales-Molino, C., García-Antón, M., Postigo-Mijarra, J. M., and Morla, C.: Holocene vegetation, fire and climate interactions on the westernmost fringe of the Mediterranean Basin, *Quaternary Sci. Rev.*, 59, 5-17, 2013.
- Muscheler, R., Kromer, B., Björck, S., Svensson, A., Friedrich, M., Kaiser, K. F., and Southon, J.: Tree rings and ice cores reveal ¹⁴C calibration uncertainties during the Younger Dryas, *Nat. Geosci.*, 1(4), 263-267, 2008.
- 20 Nasi, R., Dennis, R., Meijaard, E., Applegate, G., and Moore, P.: Forest fire and biological diversity, *Unasylva*, 209(53), 36-40, 2002.
- Odgaard, B. V.: Fossil pollen as an indicator of past biodiversity, *J. Biogeogr.*, 26, 7-17, 1999.
- Oksanen, J., Blanchet, F. G., Friendly, M., Kindt, R., Legendre, P., McGlenn, D., Minchin, P. R., O'Hara, R. B. Simpson, G. L., Solymos, P., Stevens, M. H. H., Szoecs, E., Wagner, H.: *Vegan: Community Ecology Package*, R package version 2.4-1, 2016.
- 25 Power, M. J., Marlon, J., Ortiz, N., Bartlein, P. J., Harrison, S. P., Mayle, F. E., Ballouche, A., Bradshaw, R. H. W., Carcaillet, C., Cordova, C., Mooney, S., Moreno, P. I., Prentice, I. C., Thonicke, K., Tinner, W., Whitlock, C., Zhang, Y., Zhao, Y., Ali, A. A., Anderson, R. S., Beer, R., Behling, H., Briles, C., Brown, K. J., Brunelle, A., Bush, M., Camill, P., Chu, G. Q., Clark, J., Colombaroli, D., Connor, S., Daniau, A. L., Daniels, M., Dodson, J., Doughty, E., Edwards, M. E., Finsinger, W., Foster, D., Frechette, J., Gaillard, M. J., Gavin, D. G., Gobet, E., Haberle, S., Hallett, D. J., Higuera, P., Hope, G., Horn, S., Inoue, J., Kaltenrieder, P., Kennedy, L., 30 Kong, Z. C., Larsen, C., Long, C. J., Lynch, J., Lynch, E. A., McGlone, M., Meeks, S., Mensing, S., Meyer, G., Minckley, T., Mohr, J., Nelson, D. M., New, J., Newnham, R., Noti, R., Oswald, W., Pierce, J., Richard, P. J. H., Rowe, C., Goni, M. F. S., Shuman, B. N., Takahara, H., Toney, J., Turney, C., Urrego-Sanchez, D. H., Umbanhowar, C., Vandergoes, M., Vanniere, B., Vescovi, E., Walsh, M., Wang, X., Williams, N., Wilmschurst, J., and Zhang, J. H.: Changes in fire regimes since the Last Glacial Maximum: an assessment based on a global synthesis and analysis of charcoal data, *Clim. Dynam.*, 30, 887-907, 2008.
- 35 Pyne, S. J.: *Forged in fire: history, land and anthropogenic fire*. *Advances in landscape ecology* (ed. by Baleé, W.), pp. 64-103. Columbia University Press, New York. 1998.
- Qin, Y., Fei, A. W., Jin, K. L., Han, D. X., and Jin, X. Y.: Late Pleistocene sporopollen assemblages and evolution of palaeovegetation,

- palaeoclimate and palaeoenvironments in Tengchong Basin, western Yunnan, *Mari. Geol. Quaternary Geol.*, 12(1), 109-118, 1992 (in Chinese with English abstract).
- Reyes, O. and Casal, M.: Seed germination of *Quercus robur*, *Q. pyrenaica* and *Q. ilex* and the effects of smoke, heat, ash and charcoal, *Ann. For. Sci.*, 63, 205–212, 2006.
- 5 Rollins, M. G., Swetnam, T. W., and Morgan, P.: Evaluating a century of fire patterns in two Rocky Mountain wilderness areas using digital fire atlases, *Can. J. Forest Res.*, 31, 2107-2123, 2001.
- Sanchez-Goñi, M. F. and Harrison, S. P.: Millennial-scale climate variability and vegetation changes during the Last Glacial: Concepts and terminology, *Quaternary Sci. Rev.*, 29, 2823–2827, 2010.
- Schmidt, M. W. I. and Noack, A. G.: Black carbon in soils and sediments: analysis, distribution, implications, and current challenges, *Global Biogeochem. Cy.*, 14, 777-793, 2000.
- 10 Simpson, E. H.: Measurement of diversity, *Nature*, 163, 688, 1949.
- Smith, B. and Wilson, J. B.: A consumer's guide to evenness indices, *Oikos*, 76, 70–82, 1996.
- State Forestry Administration of China: Rank of the regionalization on nationwide forest fire risk. People's Republic of China trade standard for forestry. LY/T 1063-2008 (in Chinese).
- 15 Stirling, G. and Wilsey, B.: Empirical Relationships between Species Richness, Evenness, and Proportional Diversity, *Am. Nat.*, 158(3), 286-299, 2001.
- Stocker, G. C.: The regeneration of a north Queensland rainforest following felling and burning, *Biotropica*, 13, 86-92, 1981.
- Sun, X. J., Li, X., and Chen, H. C.: Evidence for natural fire and climate history since 37 ka BP in the northern part of the South China Sea, *Sci. China Ser. D*, 43(5), 487-493, 2000.
- 20 Tian, X. R., Shu, L. F., Qiao, Q. Y., He, Q. T., and Li, H.: Research on fire-resistance tree species in south China, *Journal of Beijing Forestry University*, 23(5), 43-47, 2001 (in Chinese).
- Tinner, W., Conedera, M., Ammann, B., and Lotter, A. F.: Fire ecology north and south of the Alps since the last ice age, *Holocene*, 15(8), 1214-1226, 2005.
- Tinner, W., Conedera, M., Gobet, E., Hubschmid, P., Wehrli, M., and Ammann, B.: A palaeoecological attempt to classify fire sensitivity of trees in the southern Alps, *Holocene*, 10(5), 565–574, 2000.
- 25 Tinner, W., Hubschmid, P., Wehrli, M., Ammann, B., and Conedera, M.: Long-term forest fire ecology and dynamics in southern Switzerland, *J. Ecol.*, 87, 273–289, 1999.
- Trabaud, L. and Lepart, J.: Diversity and stability in garrigue ecosystems after fire, *Plant Ecol.*, 43, 4957, 1980.
- Trabaud, L.: Fire resistance of *Quercus coccifera* L. garrigue. Fire in Ecosystem Dynamics (eds J.G. Goldharmer and M.J. Jenkins), pp. 30 21–32, 1990.
- Walsh, M. K., Pearl, C. A., Whitlock, C., Bartlein, P. J., and Worona, M. A.: An 11 000-year-long record of fire and vegetation history at Beaver Lake, Oregon, central Willamette Valley, *Quaternary Sci. Rev.*, 29, 1093-1106, 2010.
- Wang, Q.: Environmental evolution of Lugu Lake, Yunnan and Response to Southwest Monsoon Climate since LGM. PhD dissertation, Nanjing Institute of Geography and Limnology, CAS, Nanjing, China, 2012 (in Chinese).
- 35 Wang, X., Xiao, J. L., Cui, L. L., and Ding, Z. L.: Holocene changes in fire frequency in the Daihai Lake region (north-central China): indications and implications for an important role of human activity, *Quaternary Sci. Rev.*, 59, 18-29, 2013.
- Wang, Y. F., Zhu, Y. X., Pan, H. X., and Yin, Y.: Environmental characteristics of an acid Qinghai Lake in Tengchong, Yunnan Province,

- Journal of Lake Sciences, 14(2), 117-124, 2002 (in Chinese).
- Whitlock, C. and Larsen, C.: Charcoal as a fire proxy. *Tracking Environmental Change Using Lake Sediments*, (eds J.P. Smol, H.J.B. Birks and W.M. Last), pp. 85-97. *Biological Techniques and Indicators vol. 2*, Kluwer Academic Publishers, Dordrecht, The Netherlands, 2001.
- 5 Whitlock, C., Bianchi, M. M., Bartlein, P. J., Markgraf, V., Marlon, J., Walsh, M., and McCoy, N.: Postglacial vegetation, climate, and fire history along the east side of the Andes (lat 41–42.5°S), Argentina, *Quaternary Res.*, 66, 187–201, 2006.
- Wilsey, B. J. and Potvin, C.: Biodiversity and ecosystem functioning: the importance of species evenness and identity in a Quebec old field, *Ecology*, 81, 887–893, 2000.
- Wolf, M., Lehndorff, E., Mrowald, M., Eckmeier, E., Kehl, M., Frechen, M., Pätzold, S., and Amelung, W.: Black Carbon: Fire fingerprints in Pleistocene loess-palaeosol archives in Germany, *Org. Geochem.*, 70, 44–52, 2014.
- 10 Wu, Z., Zhu, Y., and Jiang, H.: *Vegetation of Yunnan province*, Science Press, Beijing, China, 1987 (in Chinese).
- Xiao, X. Y., Haberle, S. G., Shen, J., Yang, X. D., Han, Y., Zhang, E. L., and Wang, S. M.: Latest Pleistocene and Holocene vegetation and climate history inferred from an alpine lacustrine record, northwestern Yunnan Province, southwestern China, *Quaternary Sci. Rev.*, 86, 35-48, 2014a.
- 15 Xiao, X. Y., Haberle, S. G., Yang, X. D., Shen, J., Han, Y., and Wang, S. M.: New evidence on deglacial climatic variability from an alpine lacustrine record in northwestern Yunnan Province, southwestern China, *Palaeogeogr. Palaeoclimatol.*, 406, 9-21, 2014b.
- Xiao, X. Y., Shen, J., and Wang, S. M.: Spatial variation of modern pollen from surface lake sediments in Yunnan and southwestern Sichuan Province, China, *Rev. Palaeobot. Palynol.*, 165, 224–234, 2011.
- Xiao, X. Y., Shen, J., Haberle, S. G., Xue, B., Zhang, E. L., Wang, S.M., and Tong, G.B.: Vegetation, fire, and climate history during the last 18500 years in southwestern Yunnan Province of China, *J. Quaternary Sci.*, 30(8), 859-869, 2015.
- 20 Xiao, X. Y., Shen, J., Wang, S. M., Xiao, H. F., and Tong, G. B.: The plant diversity and its relationship with paleoenvironment since 2.78 Ma revealed by pollen records in the Heqing deep drilling core, *Chin. Sci. Bull.*, 53(23), 3686-3698, 2008.
- Xiao, X. Y., Yang, X. D., Shen, J., Wang, S. M., Xue, B., and Tong, X. F.: Vegetation history and dynamics in the middle reach of the Yangtze River during the last 1 500 years revealed by sedimentary records from Taibai Lake, China, *Holocene*, 23(1), 57–67, 2013.
- 25 Xu, Y. H.: *The climate in southwestern China*, Beijing: China Meteorological Press, 1991 (in Chinese).
- Zhang, E. L., Sun, W. W., Zhao, C., Wang, Y. B., Xue, B., and Shen, J.: Linkages between climate, fire and vegetation in southwest China during the last 18.5 ka based on a sedimentary record of black carbon and its isotopic composition, *Palaeogeogr. Palaeoclimatol.*, 435, 86-94, 2015b.
- Zhang, Z. Q., Zhong, J. J., Lv, X. G., Tong, S. Z., and Wang, G. P.: Climate, vegetation, and human influences on late-Holocene fire regimes in the Sanjiang plain, northeastern China, *Palaeogeogr. Palaeoclimatol.*, 438, 1-8, 2015a.
- 30 Zhen, Y. T., Zhu, B. Q., Jiao, H. B., Zou, L., Zhang, L. C., Huang, S. E., and Xiao, J. X.: A study on the combustibility of forestation tree species in Jiangxi Province, *Acta Agriculturae Universitatis Jiangxiensis*, 34(1), 93-98, 2012 (in Chinese).

Figures

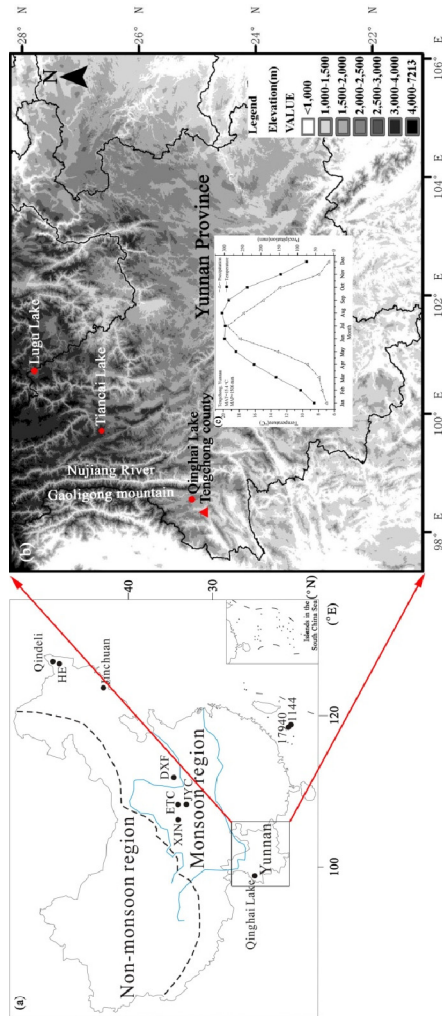


Figure 1. (a) The sketch map of monsoon and non-monsoon regions in China and other sites mentioned in text (XIN: Xujianian; ETC: Ertangcun; JYC: Jiangyangcun; DXF: Dongxiafeng). (b) Topographic map of southwestern China and the location of Qinghai Lake. (c) Climate diagram from Tengchong meteorological station near Qinghai Lake showing monthly temperature and precipitation. These data are 34-year climate averages for the period 1980-2013. MAT: mean annual temperature; MAP: mean annual precipitation.

5

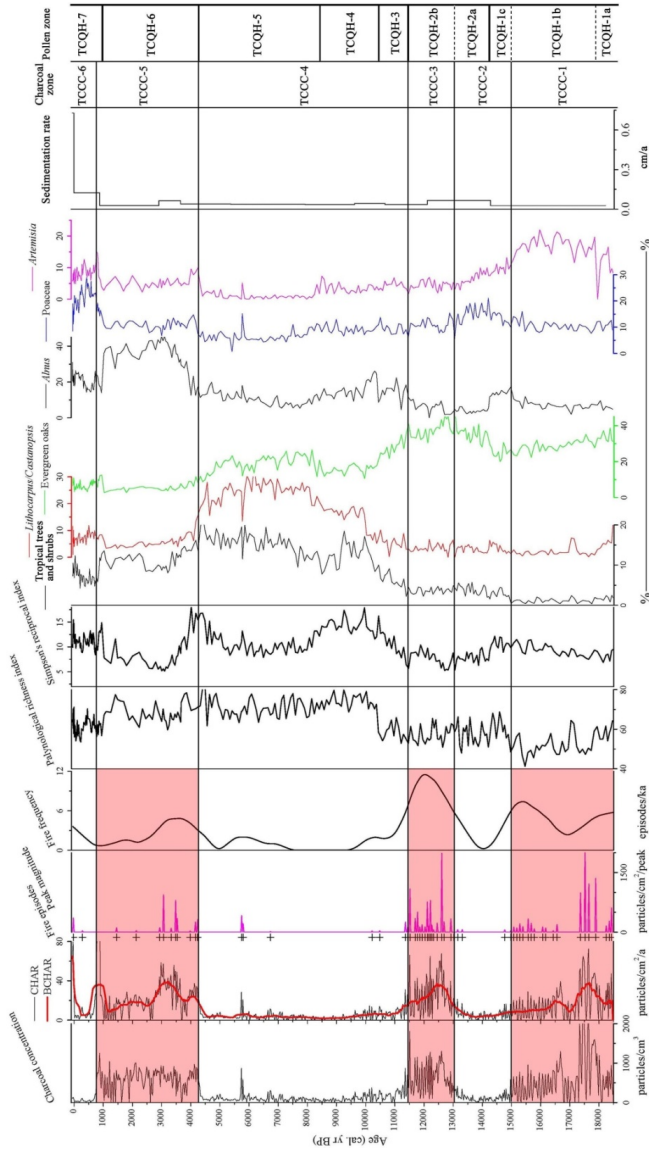


Figure 2. Results from charcoal analyses, pollen diversity indices, percentages of six main pollen taxa, and sedimentation rate for Qinghai Lake. The red shadings indicate the three periods with high fire activity.

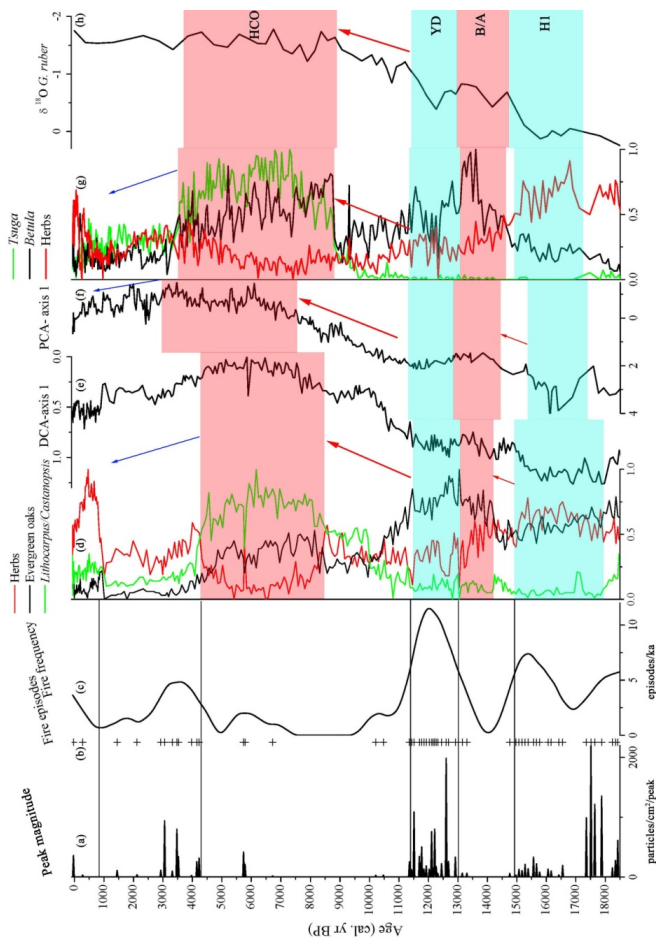


Figure 3. A comparison of fire activity from Qinghai Lake and climate proxies from the southwest monsoon regions. (a) Peak magnitude. (b) Fire episodes. (c) Fire frequency. (d) Standardized data of pollen percentages of *Castanopsis/Lithocarpinus* (green line), evergreen oaks (black line), and herbs (red line) from Qinghai Lake (this study). (e) DCA axis 1 sample score of pollen data from Qinghai Lake (Xiao et al., 2015). (f) PCA axis 1 sample score of pollen data from Tiancai Lake (Xiao et al., 2014a, b). (g) Standardized data of pollen percentages of *Tsuga* (green line), *Betula* (black line), and herbs (red line) from Lugu Lake (Wang et al., 2012). (h) The $\delta^{18}\text{O}$ record of the planktic foraminifera *G. rubber* for core NOIP905, western Arabian Sea (Huguët et al., 2006). The light green shadings indicate relatively cold and dry periods (H1 and YD). The red shadings indicate relatively warm and humid periods (B/A and HCO). The red lines with arrows indicate increases in temperature and precipitation. The blue lines with arrows indicate climate cooling and drying.