

Sea ice led to poleward-shifted winds at the Last Glacial Maximum: the influence of state dependency on CMIP5 and PMIP3 models

Louise C. Sime¹, Dominic Hodgson¹, Thomas J. Bracegirdle¹, Claire Allen¹, Bianca Perren¹, Stephen Roberts¹, and Agatha M. de Boer²

¹British Antarctic Survey, Cambridge, U.K.

²Bert Bolin Centre for Climate Research, Department of Geological Sciences, Stockholm University, Stockholm, Sweden

Correspondence to: Louise C. Sime (lsim@bas.ac.uk)

Abstract. Latitudinal shifts in the Southern Ocean westerly wind jet could drive changes in the glacial to interglacial ocean CO₂ inventory. However, whilst CMIP5 model results feature consistent future-warming jet shifts, there is considerable disagreement in deglacial-warming jet shifts. We find here that the dependence of pre-industrial (PI) to Last Glacial Maximum (LGM) jet shifts on PI jet position, or state dependency, explains less of the shifts in jet simulated by the models for the LGM compared with future-warming scenarios. State dependence is also weaker for intensity changes, compared to latitudinal shifts in the jet. Winter sea ice was considerably more extensive during the LGM. Changes in surface heat fluxes, due to this sea ice change, probably had a large impact on the jet. Models which both simulate realistically large expansions in sea ice and feature PI jets which are south of 50°S, show an increase in wind speed around 55°S, and can show a poleward shift in the jet between the PI and the LGM. However models with the PI jet positioned equatorwards of around 47°S do not show this response: the sea ice edge is too far from the jet for it to respond. In models with accurately positioned PI jets; a +1° difference in the latitude of the sea ice edge tends to be associated with a -0.85° shift in the 850 hPa jet. However, it seems that around 5° of expansion of LGM sea ice is necessary to hold the jet in its PI position. Since the ? data supports an expansion of more than 5°, this result suggests that a slight poleward shift and intensification was the most likely jet change between the PI and the LGM. Without the effect of sea ice, models simulate polewards shifted westerlies in warming climates and equatorward shifted westerlies in colder climates. However, the feedback of sea ice counters and reverses the equatorward trend in cooler climates so that the LGM winds were more likely to have also been shifted slightly poleward.

1 Introduction

The concentration of CO₂ in the atmosphere decreases by ~90 parts per million between warm interglacial and cold glacial climate states, due to oceanic storage of the excess carbon (?). Mechanisms
25 behind this enhanced ocean storage are still unresolved. One hypothesis invokes latitudinal shifts in the Southern Ocean westerly wind belt. An equatorward, or weaker, westerly wind jet could suppress deep water ventilation, leading to carbon becoming trapped in cold dense waters (???).

The evidence in favour of jet shifts driving increased glacial oceanic carbon storage though direct physical and biological carbon pumps is weak. Authors including ???? have investigated the effect
30 that wind jet shifts have on ocean circulation during the Last Glacial Maximum (LGM) using numerical models. In one of the most complete recent studies, ? simulated the impact of jet shifts with a full ocean general circulation model (MITgcm), spun up to simulate LGM conditions, and used a dissolved inorganic carbon package (?) to simulate carbon changes. They found small net effects on atmospheric carbon, with a rise of only 3 to 9 ppm CO₂ under both a north and a southward 10°
35 shift of the surface jet. These results are similar to those obtained using some simpler ocean models (???). However, the effects on ocean circulation and biology are complex and non-linear, with competing effects from physical and biological carbon pumps. Thus it is difficult to know if these model-based studies are sufficiently accurate to constrain the CO₂ impact of a specified wind shift. So whilst most, though not all (*e.g.* ?), ocean and carbon modelling results do not support the idea
40 that shifts in the westerly wind belt played a dominant role in coupling atmospheric CO₂ rise and global temperature there is, as yet, no definitive answer to this question.

Jet shifts have been proposed to modify other aspects of the climate-CO₂ system. Iron rich dust borne by Southern Hemisphere winds is thought to increase Southern Ocean productivity (?). ? show that large-scale Southern Hemisphere climate forcings, likely wind related, enhanced cold glacial
45 period dust mobilization in Australia, New Zealand, and Patagonia. ? hypothesise a Southern Ocean dividing latitude between negative and positive buoyancy forcing at the edge of the summer sea ice edge, with knock-on impacts for ocean dynamics. ? show that if the atmospheric jet shifts poleward, summer sea ice extends, likely due to enhanced heat loss to the atmosphere. Thus both dust and buoyancy forcing may provide an additional means for jet changes to influence glacial to interglacial
50 climate shifts.

A wide range of paleodata has been interpreted as evidence for glacial to interglacial jet shifts. This data includes proxies, or direct measurements of, terrestrial moisture, dust deposition, sea surface temperatures, and ocean productivity. ? find that purely based on these paleodata, one can hypothesise a variety of wind change scenarios including: no change, a southward shift, and a north-
55 ward shift. It remains an extraordinarily difficult task to constrain glacial to interglacial jet shifts and intensifications based on data alone (?). Whilst ? find that the moisture change paleodata can be accurately modeled under a no jet shift scenario, ? suggest that an equatorward jet shift, or intensification, could also be consistent with the majority of the paleodata. Efforts to help solve this

jet change problem using GCMs have benefitted from the fifth Coupled Models Intercomparison
60 Project (CMIP5), specifically the third Paleoclimate Models Intercomparison Project (PMIP3), and
its predecessor PMIP2 (??). PMIP2 and PMIP3 have provided ensembles of LGM and PI climate
simulations, where each model is run under the same boundary conditions, permitting intermodel
comparisons and insight into crucial wind change mechanisms (e.g. ???).

Existing analyses of PMIP2 and PMIP3 LGM simulation ensembles show considerable inter-
65 model disagreement in pre-industrial (PI) to LGM Southern Hemisphere jet changes (??). This is
despite the fact that nearly all CMIP5 models exhibit a poleward shift, and all models a strength-
ening, of the surface jet from 1900 to 2100 (?). Indeed ? find that future-warming scenario RCP4.5
(Representative Concentration Pathway 4.5) shifts in the 850 hPa jet can be largely explained by
tropospheric temperature differences between the southern high latitudes and the tropics. ? and ? ex-
70 amine another aspect: state dependency for Southern Ocean jet shifts and intensity changes, where
state dependency is defined as the dependence of jet shifts on the start jet position. ? find that for
some oceanic sectors, particularly the Pacific, the starting position of the jet (state dependence) ex-
plains more than 85% of the jet shift variance found between the different CMIP5 future-warming
scenario simulations. This implies that the start latitude of the jet is potentially a strong contender as
75 an explanation for CMIP5-PMIP3 inter-model jet shift differences. Additionally, whilst tropical tem-
perature changes dominate the future-warming wind changes, high latitude temperature changes are
as significant to the winds during the deglacial-warming (?). Sea ice is thus highlighted also as being
particularly significant for the accurate jet simulations (??). Here we investigate past-cooling LGM
state dependency, sea ice, and changes in the Southern Ocean westerly wind jet using CMIP5-PMIP3
80 output.

2 Data: CMIP5-PMIP3 simulations

CMIP5-PMIP3 pre-industrial (PI) and Last Glacial Maximum (LGM) simulations are run with full
dynamic ocean and sea ice models. The LGM simulations all follow the PMIP3 protocol (<https://wiki.lsce.ipsl.fr/pmip3/doku.php/pmip3:design:21k:final>): orbital parameters are set to
85 their 21 000 yr ago values; concentration of atmospheric greenhouse gases are set to 185 ppm for
CO₂; 350 ppb for CH₄; and 200 ppb for N₂O. All models use the PMIP3 LGM ice sheet or ICE5.2G
ice sheet configurations (?). Simulations are run for long enough to allow the atmosphere and ocean
to reach quasi-equilibrium (??).

Models and simulations are shown in Table 1. For some models more than one realization is
90 available (i.e. the same model is run more than once with the same forcing). Where more than one
realization is available (indicated in Table 1), the mean of those realizations is used. Additionally,
some models (e.g. GISS-E2-R-p150 and GISS-E2-R-p151) differ only slightly in their physics. In

this case, as above, we use a mean of these model simulations. This yields a total of nine independent PMIP3 simulations.

95 2.1 Southern Ocean wind jet diagnostics

The choice of Southern Ocean jet diagnostic can influence apparent glacial to interglacial wind change results (?). Previous authors have used: surface winds (?); above-surface winds; or surface shear stress (?). Where sea ice replaces open water, each of these diagnostics shows a different response (??). Sea ice affects surface roughness and near surface stratification of the boundary layer, this can lead to quite different results for glacial to interglacial changes in different wind diagnostics and shear stress (Figure 1). For this reason, we concentrate on the above surface (850 hPa) winds, given that any model specific specification of sea ice effects tends to have a lesser impact on this diagnostic (?). However, given the importance of surface wind speed and shear stress for driving the Southern and global Ocean circulation and hence CO₂ exchange, some discussion of all of these three wind diagnostics is included in this study.

When calculating jet intensity and position for each diagnostic, we use a cubic spline interpolation to quantify the jet maximum and determine its latitude. Jet shifts are defined here as PI to LGM changes in the latitudinal position of the zonal mean maximum in the jet. Data is regridded to a consistent 0.1° resolution before these calculations are performed. In addition to these zonal mean diagnostics, we also assess individual ocean sectors results. In these cases, sectors are defined by longitude ranges as follows: Atlantic sector (290° to 20°), Indian sector (20° to 150°) and Pacific sector (150° to 290°). Jet diagnostics are calculated for the annual mean in the Southern Hemisphere 850 hPa wind component; the annual mean 1000 hPa westerly wind is used as an indicator for surface wind. This diagnostic is used in lieu of the 10-metre surface westerly wind speed ‘uas’ field, because ‘uas’ is not available for LGM simulations for two CMIP5 models. We also calculate the zonal shear stress τ_U , ‘jet’ position and intensity. Required variables (‘ua’ and ‘tauu’) were downloaded from the CMIP5 data archive between September and October in 2014.

All CMIP5 models show an equatorward bias in the present-day zonal mean surface jet position. The ensemble of present day CMIP5 simulations show a mean equatorward bias of 3.3° (inter-model standard deviation of $\pm 1.9^\circ$) in the position of the surface zonal mean jet (??). A bias is still present, but is reduced, in atmospheric-only simulations. This implies that sea surface temperature and sea ice errors, *i.e.* ocean-atmosphere coupling, tends to generate wind jet biases. Simulations of Southern Ocean winds are similar for both standard and high-top version models (?), which implies that inter-model differences in stratospheric resolution and representation may not be critical. The equatorward jet biases are mainly associated with the Indian and Pacific sectors.

2.2 The sea ice edge

Where available, sea ice concentration data was downloaded for the model simulations. The sea ice edge was calculated using a mean annual sea ice concentration of 15%. For a few model simulations sea ice concentration data was not available. In this case a best fit relationship between sea surface temperature and sea ice edge, derived from the models where both output were available, was used to estimate the sea ice edge (COSMOS-ASO and IPSL-CM5A-LR).

3 Results

3.1 Jet changes and state dependency

We focus in this study on the PI and LGM CMIP5-PMIP3 simulations. Table 2 indicates a wide range of PI to LGM latitudinal jet shifts across the PMIP3 simulations, varying from + 2.0 to - 4.5 ° for the 850 hPa jet. The mean 850 hPa jet shift for the nine models is small: - 0.2 ° (inter-model standard deviation of $\pm 2.1^\circ$). The mean surface jet shift for the nine models is - 0.9 ° (inter-model standard deviation of $\pm 1.6^\circ$). The median shift for both 850 and 1000 hPa is 0°. Similar inter-model variation appears in the jet intensity changes (Table 2).

Following the ? approach, we calculate state dependency for Southern Ocean jet shifts and intensity changes across the various oceanic sectors, *i.e.* the dependence of PI to LGM jet shifts with PI jet position. Feedbacks within the troposphere have been used to explain state dependence in previous studies (*e.g.* ?). We find that state dependency can explain up to 56 % of the variance in PI to LGM jet shifts in the Atlantic ($r = -0.75$, $N = 9$, for τ_U), and 41 % in the Indian Ocean ($r = -0.64$, $N = 9$, for τ_U). State dependency is much weaker in the Pacific; here any influence is negligible. 850 hPa and 1000 hPa results are always very similar (not shown). We find state dependence is stronger for the τ_U jet than the 850 hPa jet (Figure 2), due largely to the MRI-CGCM3 850 hPa outlier. With the anomalous MRI-CGCM3 850 hPa wind result removed from the calculation, we obtain similar results between 850 hPa and τ_U . For the whole of the Southern Ocean, the variance explained by state dependency is 38 % ($r = -0.62$, $N = 9$, for τ_U).

Whilst these CMIP5-PMIP3 results bear similarities to the ? CMIP5-RCP8.5 analysis of state dependence, they also show distinct differences. Over the Atlantic sector ? find the correlation, calculated between present day and RCP8.5 CMIP5 output, is relatively weak ($r = -0.39$) compared with the correlations over the Indian sector ($r = -0.50$) and Pacific sector ($r = -0.91$). Interestingly, ? also find that correlation results over the Atlantic are conditional on omitting model MRI-CGCM3, which is again an influential outlier due to jumps in jet position.

For jet intensity ? find the state dependence is generally weaker than for position; we find a similar result here. The state dependency in intensity change can explain only 25 % ($r = -0.50$, $N = 9$, for τ_U) of the PI to LGM change.

160 This analysis indicates that, whilst state dependence plays a role in determining deglacial-warming jet shifts and intensity changes, overall the influence of state dependency alone is much weaker compared with future-warming climate change scenarios. This implies that other factors must also be important in determining the LGM wind changes; we now look at the factors which are most likely to drive these changes.

165 **3.2 The impact of sea ice**

The most recent compilation of LGM sea surface temperature data is the MARGO dataset (?). Although the coverage of MARGO data is good in tropical regions, it is sparse poleward of 40°S (?). However, ? provide LGM sea surface temperature and sea ice data from 122 Southern Ocean sediment core sites. This data suggests that LGM sea ice extended in the Atlantic and Indian sector to
170 close to 47°S, and in the Pacific sector to 57°S; a PI to LGM equatorward expansion of between 7 and 10° in latitude. This is a large change, particularly compared with the sea ice changes which occur during most future-warming scenario CMIP5 simulations.

All CMIP5-PMIP3 models for which we can retrieve sea ice output show an LGM expansion of sea ice in the Southern Hemisphere (Table 3). There is considerable variability between the models.
175 Expansions range between 2.1 and 7.0 ° (Figure 4, Table 3). Only two models, CCSM4 and MRI-CGCM3 (with ? data agreements of 87% and 88%, see Appendix 1), appear to yield an accurate simulation of LGM sea ice extent (Table 3), and some of the largest equatorward expansions of sea ice at 5.6 and 7.0 °, respectively.

Changes in sea ice extent are associated with relatively strong surface heat flux anomalies, which
180 can be as large as 100 W m⁻² (?). A strong non-linearity of wind response can thus be generated, dependent on the location of the resultant changes in meridional temperature gradients in the atmosphere. For example, surface cooling due to an expansion of sea ice causes an anomalous increase in the meridional temperature gradient adjacent to the newly ice-covered ocean. If this increased gradient lies immediately poleward of the jet and its associated baroclinic zone, it can be more effective
185 at influencing developing baroclinic waves and the latitude of the jet. Support for this idea is also found in the results of ? and ?, where changes in surface heat fluxes have the largest impact when they are approximately co-located with the maximum in the meridional temperature gradient.

If we look at changes in CMIP5-PMIP3 sea ice along with westerly winds and meridional temperature gradients throughout the atmosphere, we see evidence of this effect (Figures 5 and 6).
190 Although, broadly, larger increases in temperature gradient over the troposphere give larger westerly wind increases over the troposphere, this is actually because increases in horizontal temperature gradient lead to increases in westerly wind with height. These wind changes are generally quite small near the surface and either increase or decrease with height depending on the sign of the temperature gradient change.

195 When looking at all models, there are some commonalities in the meridional structure in wind and temperature gradient changes. Between the top and 200 hPa level, poleward of 50°S the temperature gradient increases resulting in an increase in westerly wind speed, U. Equatorward of 50°S the temperature gradient tends to decrease, with the strongest decrease between 50 and 300 hPa. Upper and mid tropospheric U also decreases in all models equatorward of around 50°S. Below 400 hPa there
200 tends to be an increase in the meridional temperature gradient poleward of around 40°S, however there is considerable inter-model variability in the details of the temperature gradient changes and in associated wind changes.

As the above implies we find that the key differences, in westerly winds and meridional temperature gradients changes, are a function of state dependence and sea ice. Indeed, based on state
205 dependence (PI jet position) and sea ice changes, models can be roughly classed into four groups. CCSM4 and MRI-CGCM3, in the first group (Figures 5ab and 6ab), both simulate large expansions in sea ice (of 5.6 and 7°, respectively) and feature the most southerly positioned jets (at 51°S ± 1.1°). This jet position tends to leave U sensitive to expansions in sea ice. The large increases in the meridional temperature gradient, especially around 55°S from 1000 to about 650 hPa, thus tally with
210 the increases in U around these latitudes, and also results in a PI to LGM poleward shift in the jet in both models, especially in MRI-CGCM3.

In the second group, whilst GISS-ER-R and CNRM-CM5 (Figures 5cd and 6cd) have PI jets which are positioned relatively far to the south (at 48°S ± 0.3°) both feature rather small LGM expansions in sea ice (of around 2°). The resultant small polar atmospheric cooling causes little
215 change in the meridional temperature gradient. U tends to weaken over the Southern Ocean latitudes, likely due to the overall atmospheric cooling. These two models show a slight equatorward shift in their jets between the PI and the LGM.

In the third group, COSMOS-ASO and MPI-ESM-P (Figures 5ef and 6ef) have PI jets positioned at 47°S ± 0.6°, and feature quite large LGM expansions in sea ice (of 5 and 6°, respectively). The
220 position of these jets makes these models less sensitive to the LGM expansion of sea ice: they show a slight weakening of U and no jet shifts. It seems that the storm track and its associated baroclinic zone is not significantly affected by these sea ice increases, and associated meridional temperature gradient changes, because they happen far poleward of the baroclinic jet zone.

In the last group, FGOALS-G2, IPSL-CM5A-LR, and MIROC-ESM (Figures 5ghi and 6ghi) all
225 have very northerly positioned PI jets (at 43°S ± 0.5°), they also all show a rather small (less than 3°) LGM increase in sea ice extent. The jets in these models thus seem to be responding to influences other than sea ice: possibly tropical changes, or sea surface temperature changes nearer 43° have more impact. We find a quasi-linear relationship between the jet shifts and tropical temperature changes in the atmosphere, where polar temperatures are held constant, suggesting that tropical
230 changes may be a stronger influence on these models.

3.2.1 The relationship between sea ice extent and jet position

In simulations with more poleward (*i.e.* accurately) positioned PI jets, the examination above of jet and sea ice changes suggests that PI to LGM wind changes are strongly related to sea ice extent. Figure 7a shows that the PI jet position is inversely related to sea ice extent, in models with the most accurately positioned PI jets. We find that an equatorwards sea ice edge correlates with a poleward jet position ($r = -0.95$ for the PI, and $r = -0.91$ for the LGM). Whilst correlations are strongest for 850 hPa winds, similar results are obtained using 1000 hPa and τ_U ($r < -0.80$).

In terms of PI to LGM jet shifts, if we apply a linear least-squares fit, we find that a 1° difference in the sea ice edge suggests a -0.85° shift in the 850 hPa jet ($r = -0.80$; $N=5$). These results are heavily influenced, but are not entirely dependent on, the MRI-CGCM3 model. This model features the largest 7° expansion of the sea ice and a large 4.5°S poleward shift in the 850 hPa jet (Figure 7; Table 3). Without this model result included in the calculation, a 1° difference in the sea ice edge still suggests a -0.43° shift in the 850 hPa jet ($r = -0.96$; $N = 4$). However, as the section above indicates, this relationship only applies to models which have jets which are relatively accurately positioned *i.e.* those which are sensitive to the impact of sea ice changes; if the model has a jet which sits equatorward of 47°S then the relationship breaks down. This relationship also fits with the study of ? who found that the jet shifts significantly poleward when the sea ice extent is substantially increased. However the jet exhibits little response for small changes, and particularly little response if the sea ice edge is far from the jet, for example during the summer, when the sea ice edge is far from the jet maxima. The cause of the asymmetry in the atmospheric response relates to the extent to which sea ice changes affect meridional temperature gradients in the near-surface baroclinic zone. Together these results suggest that the impact of sea ice expansion during the LGM is crucial, but is only be captured if the PI jet position is accurately simulated.

In addition, the offset of the fitted line in Figure 7b suggests that, without any expansion in sea ice, the jet might tend to shift towards the equator; by around 4° during the LGM. From the zero-cross of the line, we tentatively suggest that around 5° of sea ice expansion is necessary to counteract this tendency. Given that the ? data supports a latitudinal expansion of more than 5° , this result does suggest that a slight poleward shift (and intensification) is likely to have been a feature of the LGM jet.

3.2.2 Sea surface temperatures changes

If we also fit a linear model to jet shifts against sea surface temperature changes in the marginal sea ice zone we find a weak positive relationship between sea surface temperature and 850 hPa jet position.

Given the strong relationship between Southern Ocean surface temperature and sea ice, it is difficult to separately assess any influences of sea ice and sea surface temperature on Southern Ocean

winds. However, ? conducted sensitivity experiments, using an atmospheric-only GCM, in order to attempt to elucidate these relationships. As the analysis above suggests, ? showed that cooling the Southern Ocean, near the sea ice edge, around 55°S, and extending the sea ice promote the same response in the 850 hPa winds.

270 Here, with CMIP5-PMIP3 results, we find that for the five models with PI jets which are positioned poleward of 47°S an average temperature change of -1 K (over the ? data network locations) results in a 3.0° poleward shift in the 850 hPa jet ($r = 0.83$; $n=5$; Figure 7c). ? also found that cooling near the edge of the LGM Southern Ocean sea ice and extended sea ice coverage caused a wind intensification which is largest between 56-58°S. This drives the small poleward shift in the location
275 of the winds maximum. Here, CMIP5 models with accurately positioned PI jets, show a similar result.

4 Summary and conclusions

We have analysed the CMIP5-PMIP3 LGM and PI simulations for Southern Ocean region wind changes, and examined the impacts of sea surface changes and state dependency. Nine fully inde-
280 pendent CMIP5-PMIP3 model simulations were included in the analysis. We find a wide range of PI to LGM latitudinal shifts in the jet across the PMIP3 simulations, varying from $+2.0$ to -4.5° for the 850 hPa jet, but the mean 850 hPa jet shift for the nine models is small: -0.21° . The dependence of PI to LGM jet shifts on PI jet position, referred to here as state dependency (following ?), explains up to 56 % of the variance in PI to LGM jet shifts in the Atlantic sector of the Southern Ocean, for
285 τ_U , and 41 % in the Indian sector. The impact in the Pacific however is negligible. Since state dependence plays a weaker role in determining jet shifts and strength changes for the deglacial-warming, compared to future-warming scenarios, this implies that other factors are important in determining the LGM wind changes. Changes in surface heat fluxes, due to sea ice changes, can have very large impact on the jet, particularly when they are located close to the position of the jet, which is itself
290 usually co-located with the maximum in the meridional temperature gradient. Given that LGM sea ice extended in the Atlantic and Indian sector close to 47°S, and in the Pacific sector to 57°S (?), the key differences in jet shifts seem to be a dual function of state dependence and sea ice change.

All CMIP5-PMIP3 models show an LGM expansion of sea ice in the Southern Hemisphere, but there is considerable inter-model variability in the size of the expansion, which ranges from 2.1 and
295 7.0° . State dependence (PI jet position) and sea ice changes together control jet shift behaviours. Only two models, CCSM4 and MRI-CGCM3, both simulate realistically large expansions in sea ice and simulate PI jets which are south of 50°S. These models show an increase in westerly wind speed around 55°S, and a large PI to LGM poleward shift in the jet in MRI-CGCM3. For models which have jets that are positioned relatively far to the south (at $48^\circ\text{S} \pm 0.3^\circ$) but which do not
300 correctly simulate the observed expansion in sea ice, the resultant small polar atmospheric cooling

causes little change in the meridional temperature gradient. In this case, westerly wind speed simply tends to weaken over the Southern Ocean latitudes. Models which simulate a large increase in sea ice extent, but which have jets positioned too far towards the equator are not sensitive to the LGM expansion of sea ice: they show a slight weakening of U, but no jet shifts. The jet is not significantly
305 affected by these sea ice increases, and associated meridional temperature gradient changes, because they happen too far poleward of the baroclinic jet zone. This also fits with the study of ? who found that whilst the jet will shift significantly poleward when the sea ice extent is substantially increased, there is little response if the sea ice edge is far from the jet.

We can generalise the relationship between sea ice extent and jet position. In models with ac-
310 curately positioned PI jets; a 1° difference in the sea ice edge tends to be associated with a -0.85° shift in the 850 hPa jet. However, without any expansion in sea ice, it seems that the jet would shift towards the equator, by around 4° during the LGM. Thus we tentatively conclude that around 5° of sea ice expansion is necessary to hold the jet in its PI position. Given that data supports a northward expansion of more than 5° (??), this result does suggest that a slight poleward shift (and intensifica-
315 tion) is likely to have been a feature of the LGM jet at 850 hPa. This fits with the findings of ?, who found that cooling near the edge of the LGM Southern Ocean sea ice caused a wind intensification which is largest between $56-58^\circ\text{S}$. But we emphasise that these results only apply to CMIP5 models which have jets which are relatively accurately positioned *i.e.* those which are sensitive to the impact of sea ice changes; if the model has a jet which sits equatorward of about 47°S then the relationship
320 breaks down. We note also that surface wind and shear stress changes may show different changes, so these results do not necessarily hold for all wind prognostics (??).

Finally, one perhaps overlooked feature of the CMIP5 present day simulations is the proliferation of simulations which feature jets which are positioned 5° , or more, equatorward of the current ob-
served position. Many CMIP5 simulations also feature jets which can be 20% too weak (?). CMIP5
325 models can thus simulate jets which are considerably farther equatorward and weaker than they are in our current climate. Further work could investigate whether these jet positions could themselves be taken as evidence for the physical feasibility of the large LGM jet shift hypothesis. The output from these simulations could perhaps also be compared with ongoing work on the development of reliable paleo-wind and sea ice reconstructions. Pending this however, we conclude from our anal-
330 ysis of CMIP5-PMIP3 output that the LGM Southern Ocean extended sea ice coverage was most likely responsible for a small wind intensification, which was largest around $55-58^\circ\text{S}$. Without the effect of sea ice and associated sea surface cooling, models simulate polewards shifted westerlies in warming climates and equatorward shifted westerlies in colder climates. However, the impact of LGM sea ice counters and reverses the equatorward trend in cooler climates so that the LGM winds
335 were more likely to have also been shifted slightly poleward.

5 Appendix 1: Observational data and calculating model-data agreements

? provide LGM sea surface temperature and sea ice data from 122 Southern Ocean sediment core sites. ? suggested using simple model-data evaluation metrics based on simple percentage statistics. Here we use a similar approach, and assess sea ice model-data agreement by classing simulated
340 sea ice as present or absent, rather than using concentration values. Simulation results are bi-linearly interpolated to the observation site prior to the model-data assessment, analogous to the exact-metric defined by ?.

Acknowledgements. The work was funded by NERC grants NE.K004514.1 and NE/J004804/1, and also forms part of the British Antarctic Survey Polar Science for Planet Earth Programme. We acknowledge the support
345 of the ARCHER UK National Supercomputing Service (<http://www.archer.ac.uk>), and the World Climate Research Programme's Working Group on Coupled Modelling, which is responsible for CMIP, and we thank the all the climate modeling groups for producing and making available their model output.

References

- Alexander, M. A., Bhatt, U. S., Walsh, J. E., Timlin, M. S., Miller, J. S., and Scott, J. D.: The Atmospheric
350 Response to Realistic Arctic Sea Ice Anomalies in an AGCM during Winter, *J. Climate*, 17, 890–905,
doi:10.1175/1520-0442(2004)017%3C0890:tartra%3E2.0.co;2, [http://dx.doi.org/10.1175/1520-0442\(2004\)017%3C0890:tartra%3E2.0.co;2](http://dx.doi.org/10.1175/1520-0442(2004)017%3C0890:tartra%3E2.0.co;2), 2004.
- Bracegirdle, T. J., Shuckburgh, E., Sallee, J.-B., Wang, Z., Meijers, A. J. S., Bruneau, N., Phillips, T., and
355 Wilcox, L. J.: Assessment of surface winds over the Atlantic, Indian, and Pacific Ocean sectors of the South-
ern Ocean in CMIP5 models: historical bias, forcing response, and state dependence, *J. Geophys. Res. Atmos.*, 118, 547–562, doi:10.1002/jgrd.50153, <http://dx.doi.org/10.1002/jgrd.50153>, 2013.
- Braconnot, P., Otto-Bliesner, B., Harrison, S., Joussaume, S., Peterchmitt, J.-Y., Abe-Ouchi, A., Crucifix, M.,
Driesschaert, E., Fichet, T., Hewitt, C. D., Kageyama, M., Kitoh, A.; Lañé, A., Loutre, M.-F., Marti,
O., Merkel, U., Ramstein, G., Valdes, P., Weber, S. L., Yu, Y., and Zhao, Y.: Results of PMIP2 coupled
360 simulations of the Mid-Holocene and Last Glacial Maximum - Part 1: Experiments and large-scale features,
Climate of the Past, 3, 261–277, 2007.
- Braconnot, P., Harrison, S. P., Kageyama, M., Bartlein, P. J., Masson-Delmotte, V., Abe-Ouchi, A., Otto-
Bliesner, B., and Zhao, Y.: Evaluation of climate models using palaeoclimatic data, *Nature Clim. Change*, 2,
417–424, doi:10.1038/nclimate1456, <http://dx.doi.org/10.1038/nclimate1456>, 2012.
- 365 Brayshaw, D. J., Hoskins, B., and Blackburn, M.: The Storm-Track Response to Idealized SST Perturbations in
an Aquaplanet GCM, *J. Atmos. Sci.*, 65, 2842–2860, doi:10.1175/2008jas2657.1, <http://dx.doi.org/10.1175/2008jas2657.1>, 2008.
- Chavaillaz, Y., Codron, F., and Kageyama, M.: Southern westerlies in LGM and future (RCP4.5) climates, *Climate of the Past*, 9, 517–524, doi:10.5194/cp-9-517-2013, <http://dx.doi.org/10.5194/cp-9-517-2013>, 2013.
- 370 Chen, G., Plumb, R. A., and Lu, J.: Sensitivities of zonal mean atmospheric circulation to SST warming in
an aqua-planet model, *Geophys. Res. Lett.*, 37, L12 701+, doi:10.1029/2010gl043473, <http://dx.doi.org/10.1029/2010gl043473>, 2010.
- Denton, G. H., Anderson, R. F., Toggweiler, J. R., Edwards, R. L., Schaefer, J. M., and Putnam, A. E.:
The Last Glacial Termination, *Science*, 328, 1652–1656, doi:10.1126/science.1184119, <http://dx.doi.org/10.1126/science.1184119>,
375 1126/science.1184119, 2010.
- d’Orgeville, M., Sijp, W. P., England, M. H., and Meissner, K. J.: On the control of glacial-interglacial at-
mospheric CO₂ variations by the Southern Hemisphere westerlies, *Geophys. Res. Lett.*, 37, L21 703+,
doi:10.1029/2010gl045261, <http://dx.doi.org/10.1029/2010gl045261>, 2010.
- Ferrari, R., Jansen, M. F., Adkins, J. F., Burke, A., Stewart, A. L., and Thompson, A. F.: Antarctic sea ice control
380 on ocean circulation in present and glacial climates, *Proceedings of the National Academy of Sciences*, 111,
8753–8758, doi:10.1073/pnas.1323922111, <http://dx.doi.org/10.1073/pnas.1323922111>, 2014.
- Gersonde, R., Crosta, X., Abelmann, A., and Armand, L.: Sea surface temperature and sea ice distribution of the
last glacial. Southern Ocean - A circum-Antarctic view based on siliceous microfossil records, *Quaternary
Science Reviews*, 24, 869–896, 2005.
- 385 Hodgson, D. A. and Sime, L. C.: Palaeoclimate: Southern westerlies and CO₂, *Nature Geoscience*, 3, 666–667,
doi:10.1038/ngeo970, <http://dx.doi.org/10.1038/ngeo970>, 2010.

- Kidston, J. and Gerber, E. P.: Intermodel variability of the poleward shift of the austral jet stream in the CMIP3 integrations linked to biases in 20th century climatology, *Geophys. Res. Lett.*, 37, L09708+, doi:10.1029/2010gl042873, <http://dx.doi.org/10.1029/2010gl042873>, 2010.
- 390 Kidston, J., Taschetto, A. S., Thompson, D. W. J., and England, M. H.: The influence of Southern Hemisphere sea-ice extent on the latitude of the mid-latitude jet stream, *Geophysical Research Letters*, 38, n/a–n/a, doi:10.1029/2011GL048056, <http://dx.doi.org/10.1029/2011GL048056>, 2011.
- Kim, S., Flato, G., and Boer, G.: A coupled climate model simulation of the Last Glacial Maximum, Part 2: approach to equilibrium, *Climate Dynamics*, 20, 635–661, 2003.
- 395 Kohfeld, K. E., Quere, C. L., Harrison, S. P., and Anderson, R. F.: Role of Marine Biology in Glacial-Interglacial CO₂ Cycles, *Science*, 308, 74–78, doi:10.1126/science.1105375, <http://www.sciencemag.org/cgi/content/abstract/308/5718/74>, 2005.
- Kohfeld, K. E., Graham, R. M., de Boer, A. M., Sime, L. C., Wolff, E. W., Le Quééré, C., and Bopp, L.: Southern Hemisphere westerly wind changes during the Last Glacial Maximum: paleo-data synthesis, *Quaternary Science Reviews*, 68, 76–95, doi:10.1016/j.quascirev.2013.01.017, <http://dx.doi.org/10.1016/j.quascirev.2013.01.017>, 2013.
- 400 Lamy, F., Gersonde, R., Winckler, G., Esper, O., Jaeschke, A., Kuhn, G., Ullermann, J., Martinez-Garcia, A., Lambert, F., and Kilian, R.: Increased Dust Deposition in the Pacific Southern Ocean During Glacial Periods, *Science*, 343, 403–407, doi:10.1126/science.1245424, <http://dx.doi.org/10.1126/science.1245424>, 2014.
- 405 Lee, S.-Y., Chiang, J. C. H., Matsumoto, K., and Tokos, K. S.: Southern Ocean wind response to North Atlantic cooling and the rise in atmospheric CO₂: Modeling perspective and paleoceanographic implications, *Paleoceanography*, 26, PA1214+, doi:10.1029/2010pa002004, <http://dx.doi.org/10.1029/2010pa002004>, 2011.
- Liu, W., Lu, J., Leung, Xie, S.-P., Liu, Z., and Zhu, J.: The de-correlation of westerly winds and westerly-wind stress over the Southern Ocean during the Last Glacial Maximum, 45, 3157–3168, doi:10.1007/s00382-015-2530-4, <http://dx.doi.org/10.1007/s00382-015-2530-4>, 2015.
- 410 MARGO Project Members: Constraints on the magnitude and patterns of ocean cooling at the Last Glacial Maximum, *Nature Geoscience*, 2, 127–132, doi:10.1038/ngeo411, <http://dx.doi.org/10.1038/ngeo411>, 2009.
- Menviel, L., Timmermann, A., Mouchet, A., and Timm, O.: Climate and marine carbon cycle response to changes in the strength of the Southern Hemispheric westerlies, *Paleoceanography*, 23, PA4201, doi:10.1029/2008PA001604, 2008.
- 415 MITgcm Group: MITgcm user manual, online documentation, Tech. rep., MIT-EAPS, Cambridge, US, 2013.
- Otto-Bliesner, B. L., Brady, E., Clauzet, G., Thomas, R., Levis, S., and Kothavala, Z.: Last glacial maximum and Holocene climate in CCSM3, *Journal of Climate*, 19, 2526–2544, 2006.
- Roche, D. M., Crosta, X., and Renssen, H.: Evaluating Southern Ocean sea-ice for the Last Glacial Maximum and pre-industrial climates: PMIP-2 models and data evidence, *Quaternary Science Reviews*, 56, 99–106, doi:10.1016/j.quascirev.2012.09.020, <http://dx.doi.org/10.1016/j.quascirev.2012.09.020>, 2012.
- 420 Rojas, M.: Sensitivity of Southern Hemisphere circulation to LGM and 4XCO₂ climates, *Geophys. Res. Lett.*, 40, 965–970, doi:10.1002/grl.50195, <http://dx.doi.org/10.1002/grl.50195>, 2013.
- Sigman, D. M., Hain, M. P., and Haug, G. H.: The polar ocean and glacial cycles in atmospheric CO₂ concentration, *Nature*, 466, 47–55, doi:10.1038/nature09149, <http://dx.doi.org/10.1038/nature09149>, 2010.
- 425

- Sime, L. C., Kohfeld, K. E., Le Quéré, C., Wolff, E. W., de Boer, A. M., Graham, R. M., and Bopp, L.: Southern Hemisphere westerly wind changes during the Last Glacial Maximum: model-data comparison, *Quaternary Science Reviews*, 64, 104–120, doi:10.1016/j.quascirev.2012.12.008, <http://dx.doi.org/10.1016/j.quascirev.2012.12.008>, 2013.
- 430 Swart, N. C. and Fyfe, J. C.: Observed and simulated changes in the Southern Hemisphere surface westerly wind-stress, *Geophys. Res. Lett.*, 39, L16 711+, doi:10.1029/2012gl052810, <http://dx.doi.org/10.1029/2012gl052810>, 2012.
- Taylor, K. E., Stouffer, R. J., and Meehl, G. A.: An Overview of CMIP5 and the Experiment Design, *Bull. Amer. Meteor. Soc.*, 93, 485–498, doi:10.1175/bams-d-11-00094.1, <http://dx.doi.org/10.1175/bams-d-11-00094.1>,
435 2011.
- Toggweiler, J. R., Russell, J., and Carson, S. R.: Midlatitude westerlies, atmospheric CO₂, and climate change during the ice ages, *Paleoceanography*, 21, 2006.
- Tschumi, T., Joos, F., and Parekh, P.: How important are Southern Hemisphere wind changes for low glacial carbon dioxide? A model study, *Paleoceanography*, 23, PA4208+, doi:10.1029/2008pa001592, <http://dx.doi.org/10.1029/2008pa001592>, 2008.
440
- Völker, C. and Köhler, P.: Responses of ocean circulation and carbon cycle to changes in the position of the Southern Hemisphere westerlies at Last Glacial Maximum, *Paleoceanography*, 28, 726–739, doi:10.1002/2013pa002556, <http://dx.doi.org/10.1002/2013pa002556>, 2013.
- Wilcox, L. J., Charlton-Perez, A. J., and Gray, L. J.: Trends in Austral jet position in ensembles of high- and
445 low-top CMIP5 models, *J. Geophys. Res.*, 117, D13 115+, doi:10.1029/2012jd017597, <http://dx.doi.org/10.1029/2012jd017597>, 2012.

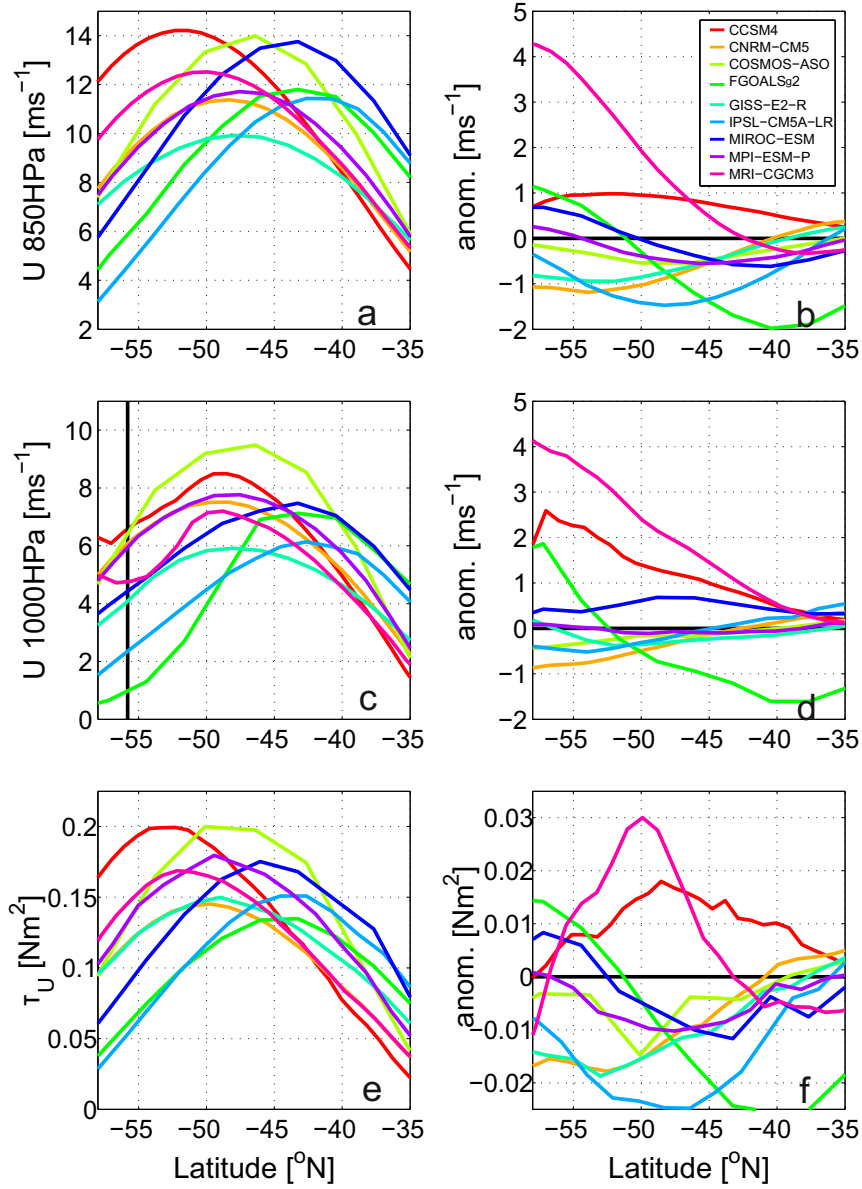


Figure 1. Zonal mean Southern Ocean winds. (a) PI wind speed U at 850 hPa, (b) and the LGM – PI anomaly, (c) PI wind speed U at 1000 hPa, and the ERA-Interim ? latitudinal position of the surface jet maximum, to represent the observational position (d) and the 1000 hPa LGM – PI anomaly, (e) PI surface shear stress τ_U , (f) and the τ_U LGM – PI anomaly. Colours as shown in the legend on panel (b) denote the individual models. All values are annual means.

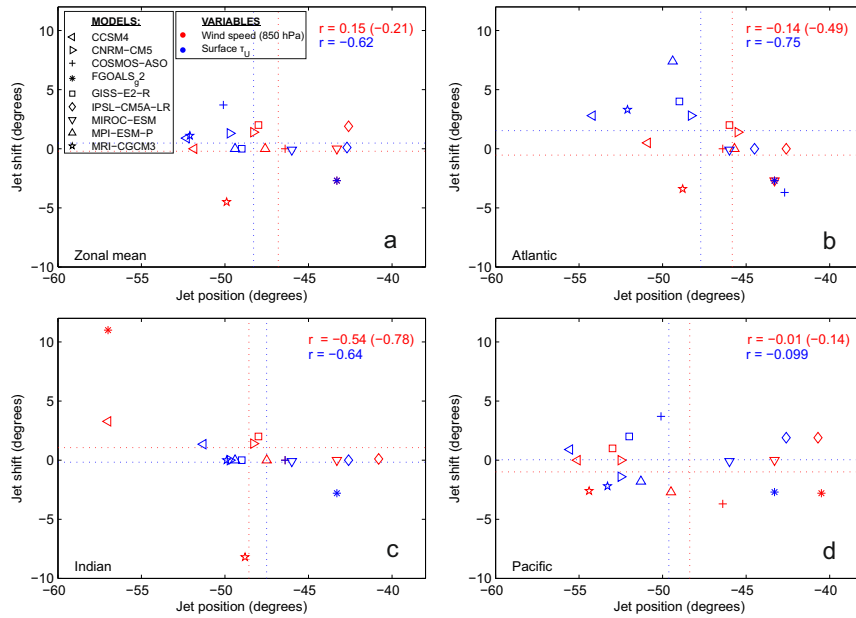


Figure 2. The state dependence of jet latitudinal shifts. (a) Scatter plot of PI annual mean Southern Ocean jet position versus LGM minus PI change in the CMIP5-PMIP3 models. (b), (c), and (d) show the same but for individual ocean sectors: Atlantic, Indian, and Pacific, as marked. The Atlantic sector is defined as 290° to 20° , the Indian as 20° to 150° , and the Pacific as 150° to 290° . Individual symbols indicate individual models, as marked in the legend in panel (a). The jet is defined using the zonal 850 hPa wind speed (red), and surface shear stress (blue). Dashed lines indicate the model mean position and model mean shift for each panel. Specified r values indicate the correlation coefficient; bracketed 850 hPa r values are calculated excluding the MRI-CGCM3 model. Correlation coefficients and relationships using 1000 hPa ‘surface wind speeds’ are almost identical to those using 850 hPa.

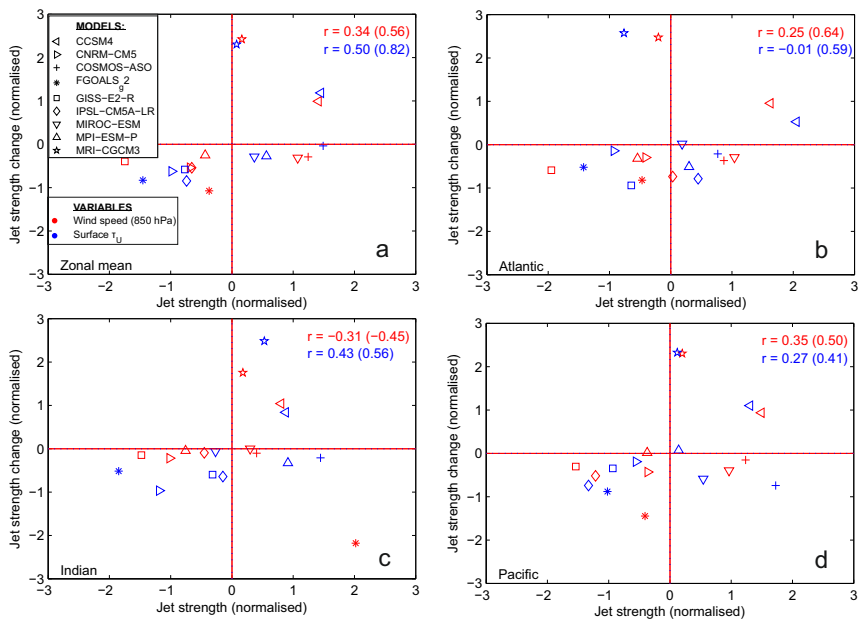


Figure 3. The state dependence of jet intensity (wind speed) changes. (a) Scatter plot of PI annual mean Southern Ocean jet strength versus LGM minus PI change in the CMIP5-PMIP3 models. Zonal mean (a), Atlantic sector (b), Indian sector (c), and Pacific sector (d). Results are normalised by subtracting the mean of all models, and dividing through by the standard deviation of all models. Caption and results as Figure 2.

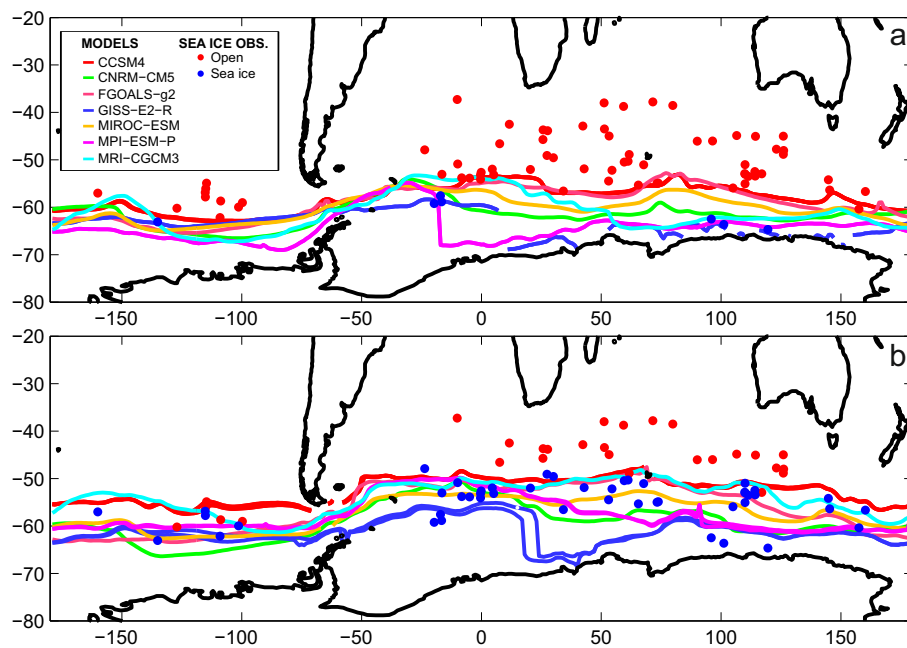


Figure 4. Sea ice from models and the ? observations for (a) the PI and (b) the LGM. Coloured dots show open water (red) and inferred sea ice (blue). The differing coloured lines show the annual mean 15% sea ice extent for individual models. See legend for colours.

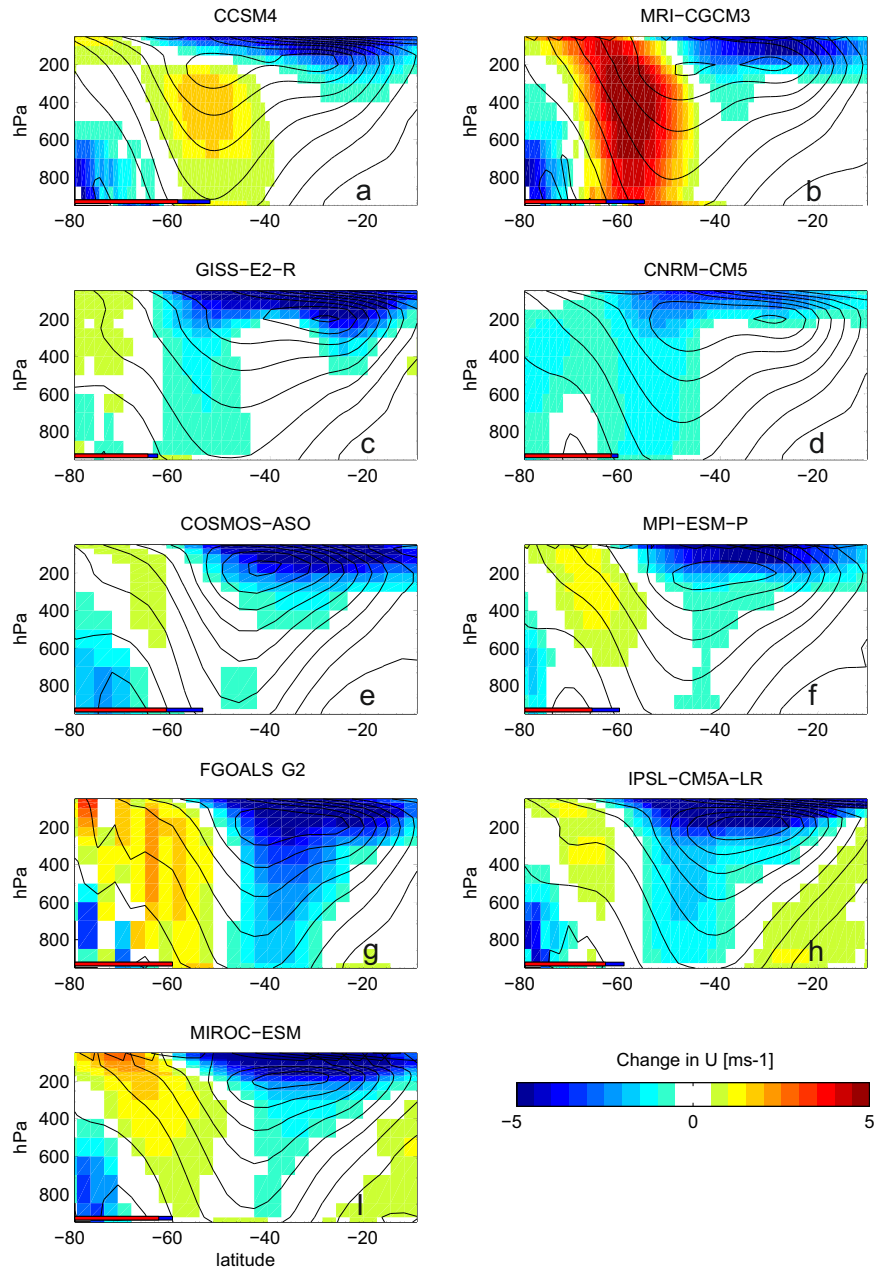


Figure 5. Change in the zonal mean wind velocity component in the westerly direction U (LGM - PI) throughout the atmosphere (shaded). Black contours show mean U for the PI. Red and blue bars at the bottom left of each panel indicate the extent of the zonal mean sea ice for the PI and LGM, respectively. Individual panels are labeled to indicate individual models. All values are annual means.

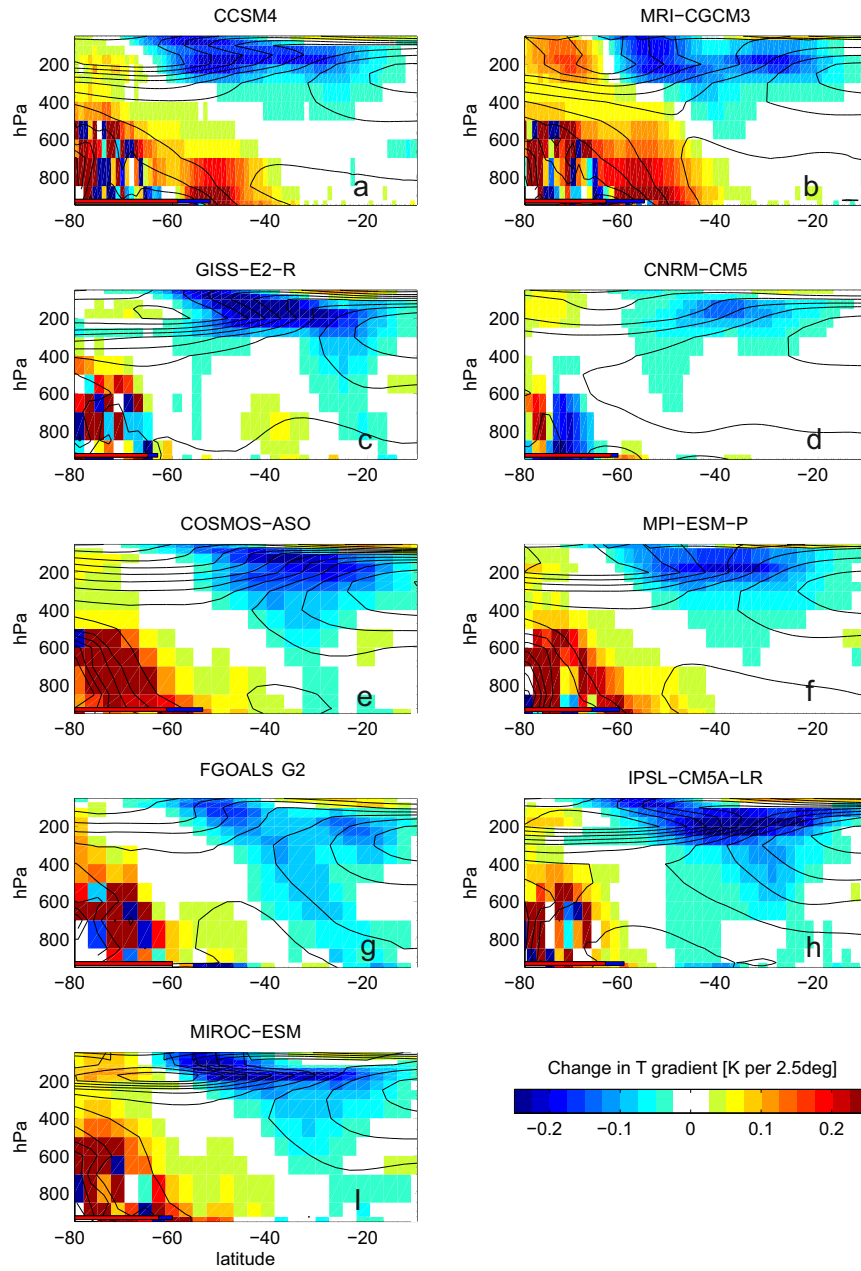


Figure 6. Change in zonal mean temperature gradient (LGM – PI) throughout the atmosphere (shaded). Black contours show the mean temperature gradient for the PI. All temperature gradients are meridional. Red and blue bars at the bottom left of each panel indicate the extent of the zonal mean sea ice for the PI and LGM, respectively. Individual panels are labeled to indicate individual models. All values are annual means.

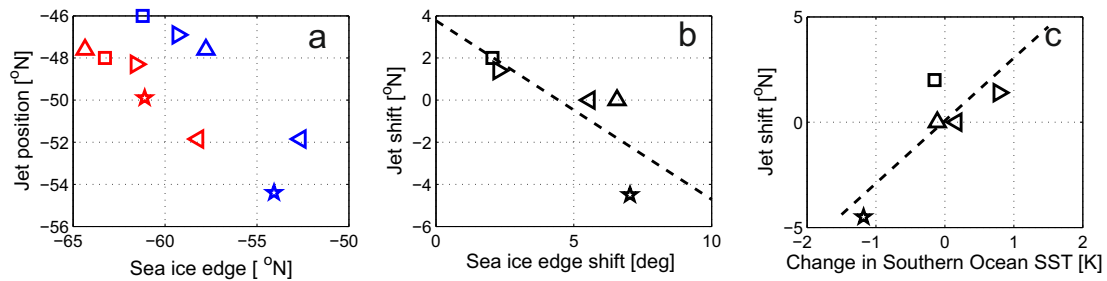


Figure 7. The relationship between sea ice, SST, and the position of the 850 hPa jet. Symbols represent individual models as shown in Figure 2. All values are calculated using annual means. Red indicates the PI; blue indicates the LGM; and black indicates changes between the PI and the LGM (LGM – PI). (a) The jet position against sea ice extent (15%); (b) jet shift against sea ice extent change; and (c) jet shift against Southern Ocean SST change. We use models where the PI jet position is poleward of 47 °S, and results are interpolated to the position of the ? observations before each calculation.

Table 1. List of all CMIP5-PMIP3 simulations used in this study. The individual simulations (r < N > i < M > p < L >) formatted as shown below (e.g. ‘r3i1p21’ with r for ‘realization’, i for ‘initialization method indicator’ and p for ‘perturbed physics’) distinguishes among closely related simulations by a single model.

Model	Institute	Grid size		Simulations	
		Lat.	Long.	Control (PI)	LGM
CCSM4	National Center for Atmospheric Research, U.S. Dept. of Energy/NSF	192	288	r1i1p1,r2i1p1	
CNRM-CM5	Centre National de Recherches Météorologiques/Centre Européen de Recherche et Formation Avancée en Calcul Scientifique, France	128	256	r1i1p1 (CNRM-CM5)	r1i1p1 (CNRM-CM5)
COSMOS-ASO	Max Planck Institute for Meteorology, Hamburg, Germany	48	96	r1i1p1 (COSMOS-ASO)	r1i1p1 (COSMOS-ASO)
FGOALS-g2	Institute of Atmospheric Physics, Chinese Academy of Sciences and CESS, Tsinghua University, China	60	128	r1i1p1 (FGOALS-g2)	r1i1p1 (FGOALS-g2)
GISS-E2-R	NASA Goddard Institute for Space Studies,	90	144	r1i1p142 (GISS-E2-R-p150)	r1i1p150 (GISS-E2-R-p150)
				r1i1p142 (GISS-E2-R-p151)	r1i1p151 (GISS-E2-R-p151)
IPSL-CM5A-LR	Institut Pierre-Simon Laplace, France	96	96	r1i1p1 (IPSL-CM5A-LR)	r1i1p1 (IPSL-CM5A-LR)
MIROC-ESM	Japan Agency for Marine-Earth Science and Technology, Atmosphere and Ocean Research Institute (The University of Tokyo), and National Institute for Environmental Studies, Japan	64	128	r1i1p1 (MIROC-ESM)	r1i1p1 (MIROC-ESM)
MPI-ESM-P	Max Planck Institute for Meteorology, Hamburg, Germany	96	192	r1i1p1 (MPI-ESM-P-p1) r1i1p1 (MPI-ESM-P-p2)	r1i1p1 (MPI-ESM-P-p1) r1i1p2 (MPI-ESM-P-p1)
MRI-CGCM3	Meteorological Research Institute, Tsukuba, Japan	160	320	r1i1p1 (MRI-CGCM3)	r1i1p1 (MRI-CGCM3)

Table 2. The Southern Ocean Westerly Winds jet position, jet strength and PI to LGM changes in jet position and strength.

Model	Location PI jet [$^{\circ}$ N]			Jet shift [$^{\circ}$]			Maximum in PI Jet			Jet strength change		
	850 hPa [$^{\circ}$ N]	1000 hPa [$^{\circ}$ N]	τ_U [$^{\circ}$ N]	850 hPa [$^{\circ}$]	1000 hPa [$^{\circ}$]	τ_U [$^{\circ}$]	850 hPa [ms^{-1}]	1000 hPa [ms^{-1}]	τ_U [Nm^{-2}]	850 hPa [ms^{-1}]	1000 hPa [ms^{-1}]	τ_U [Nm^{-2}]
CCSM4	-51.8	-49.0	-52.3	0.0	-1.4	0.9	14.2	8.53	0.199	0.99	1.50	0.011
CNRM-CM5	-48.3	-48.4	-49.7	1.4	0.1	1.3	11.4	7.51	0.145	-0.84	-0.38	-0.015
COSMOS-ASO	-46.4	-46.4	-50.1	0.0	0.0	3.7	14.0	9.49	0.20	-0.54	-0.18	-0.006
FGOALS g2	-43.3	-43.3	-43.3	-2.7	-2.7	-2.7	11.8	7.12	0.135	-1.48	-1.21	-0.018
GISS-E2-R	-48.0	-48.0	-49.0	2.0	0.0	0.0	9.9	5.92	0.150	-0.67	-0.31	-0.014
IPSL-CM5A-LR	-42.6	-42.6	-42.7	1.9	0.0	0.1	11.4	6.14	0.151	-0.84	0.12	-0.018
MIROC-ESM	-43.3	-43.3	-46	0.0	0.0	-0.1	13.8	7.47	0.175	-0.58	0.54	-0.010
MPI-ESM-P	-47.6	-47.6	-49.4	0.0	0.0	0.0	11.7	7.77	0.180	-0.50	-0.07	-0.010
MRI-CGCM3	-49.9	-48.8	-52.1	-4.5	-4.5	1.1	12.5	7.20	0.169	2.70	3.03	0.027
MEAN	-46.8	-46.4	-48.3	-0.21	-0.94	0.48	12.3	7.46	0.167	-0.196	0.34	-0.006

Table 3. The model-data agreement from the sea ice edge latitude; the mean zonal sea ice edge latitude; and the PI to LGM jet shift. Simulation results are bi-linearly interpolated to each ? observation site. Model-data agreement is then calculated by classing simulated sea ice as present or absent, analogous to the exact-metric defined by ?. A simple agreement percentage metric is then calculated using the equivalent ? sea ice (present or absent) observations.

Model	Sea ice agreement		Sea ice edge position		Sea ice shift
	PI	LGM	PI	LGM	LGM-PI
	[%]	[%]	[°N]	[°N]	[°]
CCSM4	94	87	-58.2	-52.6	5.57
CNRM-CM5	98	56	-61.6	-59.3	2.27
COSMOS-ASO	NaN	NaN	NaN	NaN	NaN
FGOALS-g2	85	37	-59.2	-56.4	2.78
GISS-E2-R	85	37	-63.3	-61.2	2.05
IPSL-CM5A-LR	NaN	NaN	NaN	NaN	NaN
MIROC-ESM	85	37	-60.3	-57.4	2.91
MPI-ESM-P	87	59	-64.3	-57.8	6.57
MRI-CGCM3	92	88	-61.1	-54.1	7.04