

A 414-year tree-ring based April-July minimum temperature reconstruction and its implications on the extreme climate events, northeast China

5 Shanna Lyu¹, Zongshan Li², Yuandong Zhang³, Xiaochun Wang^{1, *}

¹ Center for Ecological Research, Northeast Forestry University, Harbin 150040, China

² State Key Laboratory of Urban and Regional Ecology, Research Center for Eco-Environmental Science, Chinese Academy of Sciences, Beijing 100085, China

³ Key Lab of Forest Ecology and Environment, State Forestry Administration, Institute of Forest Ecology,
10 Environment and Protection, Chinese Academy of Forestry, Beijing 100091, China

Correspondence to: Xiaochun Wang, Center for Ecological Research, Northeast Forestry University, Harbin 150040, China. E-mail: wangxc-cf@nefu.edu.cn.

Abstract: A ring-width series was used as a proxy to reconstruct the past 414-year record of April-July minimum temperature at Laobai Mountain, northeast China. Chronology was built using standard tree-ring procedures for
15 providing comparable information in this area while preserving low-frequency signals. By analyzing the relationship between the tree-ring chronology of Korean pine (*Pinus koraiensis*) and meteorological data, we found that the standard chronology was significantly correlated with the April-July minimum temperature ($r = 0.757$, $p < 0.01$). Therefore, the April-July minimum temperature since 1600 (more than six trees, but EPS is greater than 0.85 since 1660) was reconstructed by this tree-ring series. The reconstruction equation accounted for 57.3% of

temperature variation, and it was proved reliable by testing with several methods (e.g., sign test, product mean test, reduction of error, and coefficient of efficiency). Reconstructed April-July minimum temperature in Laobai Mountain showed six major cold periods (1605-1616, 1645-1677, 1684-1691, 1911-1924, 1930-1942 and 1951-1969) and seven major warm periods (1767-1785, 1787-1793, 1795-1807, 1819-1826, 1838-1848, 1856-1873 and 1991-2008) during the past 414 years. The reconstructed low temperature periods in the 17th and early 18th century were consistent with the Little Ice Age (LIA) in the Northern Hemisphere, and the rate of warming in the 19th century was significantly slower than that in late 20th century. In addition, the reconstructed series was fairly consistent with the historical and natural disaster records of extreme climate events (e.g., cold damage and frost disaster) in this area. It exhibited 128-60-, 9.9-9.7-, 4.0-, 3.8-3.7-, 3.0-2.6-, 2.4- and 2.2- year periods of warm-cold changes. This temperature record provides a new evidence of past climate variability, and can be used to predict the climate trend in the future in northeast China.

Keywords Minimum temperature reconstruction; tree-ring width; northeast China; *Pinus koraiensis*; extreme climate

1 Introduction

Global climate change presents major challenges for humans and the natural systems that provide ecosystem services. Consequently, it is urgent to better understand climate change and its forcing mechanisms. Instrumental records are typically less than 100 years and often less than 50 years in most areas of the world. It is necessary to put the present climate regime in context with the long-term perspectives, which forces a reliance on natural proxy records to reconstruct the past climate. Tree rings have been widely applied in global climate change studies and paleoclimate reconstructions at both regional and global scales because they offer accurate and continuity temporal record as well as they are widespread and easily replicated (Corona et al., 2010; Bouriaud et al., 2014; Kress et al.,

2014).

Northeast China, an area sensitive to global climate change, is located in the ecotone from a temperate to cold temperate zone, belonging to monsoon fringe area. Due to the interannual instability of monsoon, frequent climate extremes (especially cold damage or frost disaster) seriously affect agriculture and forest ecosystems. In addition, previous studies suggest that climate change in northeast China was also linked to the solar activities and global land-sea atmospheric circulation during certain pre-instrumental periods (Chen et al., 2006; Wang et al., 2011; Liu et al., 2013). It is generally accepted that the climate warms during periods of strong solar activity (e.g., Medieval Warm Period) and colds during periods of low solar activity (e.g., Little Ice Age) (Lean and Rind, 1999; Bond et al., 2001). Recently, the warming in northeast China has been significantly affected by the global warming since the 20th century (Ding and Dai, 1994; Wang et al., 2004; Zhao et al., 2009), which is often caused by a faster rise of night or minimum temperature (Karl et al., 1993; Ren et al., 1998; Tang et al., 2005). To explore whether the climate warming is abnormal and predict the future trend of temperature change in this area, we must fully understand the history of climate changes over a long period. However, tree-ring series were rarely used to reconstruct past climate (especially temperature) in this area because of the exceptional hydrothermal conditions. Several temperature-sensitive tree-ring chronologies were developed in Changbai Mountain (e.g., Shao and Wu, 1997; Zhu et al., 2009; Wang et al., 2012; Li and Wang, 2013) and Xiaoxing'an Mountain (Yin et al., 2009; Zhu et al., 2015), but almost no records were obtained for the period of over 250 years, which can reflect the low-frequency climate variations. This limits our understanding a longer time scale of climate regime in northeast China. Temperature reconstructions are also far from adequate and do not satisfy the demands of scientific research. Therefore, there is a requirement for higher-quality climate reconstructions in a greater number of areas over longer periods and a larger group of climatic indicators for verification in this region. For this reason, more information of regional past climate variations registered in a long-term tree-ring series is needed, and it is important to understand the impacts of climate change on forest ecosystems and the ecosystems services provided to humans in northeast

China.

Currently, a significant climate warming (especially the minimum temperatures increase) occurred in northeast China since the 1980s. However, there still remains a lack of long-term climatic record (at least more than 250 years) in this area to explore what is the temperature regime in the past one or half thousand years, and if the current warming is unprecedented. Therefore, the main objectives of this study are (1) to develop for the first time a more than 400-year ring-width chronology in northeast China; (2) to analyze the regime of temperature variation during the past four centuries in northeast China; (3) to identify the recent warming amplitude in a long-term context; (4) and to analyze the extreme low temperature events. Our new minimum temperature record supplements existing data in northeast China and provides a new evidence of past climate variability. There is the potential to better understand future climatic trajectories from these data in northeast China.

2 Materials and methods

2.1 Study area

The study area is located at Laobai Mountain (128°03' E, 44°06' N), the boundary zone between Jilin and Heilongjiang provinces, and is also an ecotone between Changbai and Xiaoxing'an Mountain. Laobai Mt. is the third highest peak in northeast China and rises to 1650 m above sea level (a.s.l.). Almost no inhabitants live in or near the Mountain, so the forest ecosystem is preserved very well and the native vegetation remains predominantly intact (Fig. 1). Five forest vegetation types from temperate to frigid change with the altitude increase, which is the broad-leaved *Quercus mongolica* forest below 800 m a.s.l., the mixed broadleaved Korean pine forest from 800 to 1050 m, dark conifer forest with *Picea jezoensis* from 1050 to 1350 m, *Betula ermanii* forest between 1350 and 1640 m, and *Pinus pumila* forest and subalpine meadow above 1640 m. Plant flora is a transition from Changbai Mountain to Xiaoxing'an Mountain. Five tree species were cored in this area, but only Korean pine (*Pinus koraiensis*) cores were used in this study. Korean pine is a sun-loving plant (shade tolerant when it is young) and

has shallow roots, widely distribute on well-drained wet mountain slopes close to the subalpine timberline where the brown forest soil is covered. The forest vegetation in sampling area is the mixed broadleaved Korean pine forest dominated by *Pinus koraiensis*, *Picea jezoensis* and *Abies nephrolepis* as well as broadleaf tree species, such as *Juglans mandshurica*, *Fraxinus mandshurica* and *Acer mono* (Bu et al., 2003).

5 This region belongs to temperate continental monsoon climate. Climate data are collected from the nearest meteorological station in Dunhua. The mean annual temperature from 1956 to 2013 is 3.3 °C, with July (20.1 °C) and January (-16.8 °C) being the warmest and the coldest month, respectively. The mean monthly minimum and maximum temperatures are -2.5 and 9.8 °C, respectively. The mean annual total precipitation is 627 mm, the majority (63.1%) of which falls during June-August. The annual frost-free period is approximately 90-110 days (Fig.
10 2).

2.2 Tree-ring chronology development

Korean pine tree-ring samples were obtained from the south slope of Laobai Mountain along an elevational gradient from 950 to 1050 m, from an almost pristine area containing well-preserved old forests largely uninfluenced by human activity. One or two cores per undamaged tree (71 cores from 41 trees) were extracted from cross-slope sides
15 of the trunks at breast height using an increment borer. Cores were air dried, glued firmly to groove wooden mounts and sanded with progressively finer grade abrasive paper up to 800 grit. Then, the samples were cross-dated using a skeleton plot method (Stokes and Smiley, 1968), each tree-ring width was measured with a precision of 0.001 mm using VELMEX tree-ring width measurement system (Velmex, Inc., Bloomfield, NY, USA). Data were checked for missing or false rings and dating errors using the quality control program COFECHA (Holmes, 1983).

20 ARSTAN program was used to detrend and standardize cross-dated tree-ring width series into a tree-ring chronology (Cook, 1985). During this detrending process, to remove biological factors (such as age-related trends) and non-climatic variations and preserve as much low-frequency signal as possible, each ring-width series were

fitted with a straight line or negative exponential function. A 67% cubic smoothing spline with a 50% cutoff frequency was further used in a few cases when anomalous growth trends occurred. The detrended data from individual tree cores were then averaged using a bi-weight robust mean to develop the standard (STD), residual (RES) and autoregressive (ARS) chronologies (Cook and Kairiukstis, 1990).

Statistical characteristics for the STD and RES chronologies of *Pinus koraiensis* in Laobai Mountain is shown in Table 1. These statistic characters of tree-ring chronologies contained strong climate signals, common growth-limiting signals and the amount of different frequency information. As shown in Fig. 3, the amplitude of STD chronology (Fig. 3a) in low-frequency variability was larger than that in RES chronology (Fig. 3c). This indicated that STD chronology preserved more low-frequency signals, while RES chronology reflected high-frequency signals. The mean sensitivity of RES chronology was larger than STD chronology, which quantitatively illustrated that RES chronology exhibited more high-frequency climate information than STD chronology did (Table 1). The full length of tree-ring series spanned from 1600 to 2015. The expressed population signal (EPS) was used to assess the quality of STD chronology (Wigley et al., 1984). A generally acceptable threshold of the EPS was consistently greater than 0.85 from AD 1660 to 2015 (eleven trees) (Fig. 3b), which affirmed that this is a reliable period. However, although the EPS value from AD 1600 to 1659 was less than 0.85, it matches a minimum sample depth of six trees in this segment. It is very important to extend the reconstruction tree-ring chronology as possible as we could because of few long climate reconstructions in this area. Therefore, we kept this part from 1600 to 1659 to be used in the reconstruction. In addition, the STD chronology was used in the subsequent analyses to obtain more low-frequency signals.

2.3 Climate data and statistical methods

Meteorological data were obtained from the National Meteorological Information Center (<http://data.cma.cn/>). Considering the proximity to sampling sites and climate record length, climate data from Dunhua meteorological

station (43°22' N, 128°12' E, elevation 524.9 m a.s.l., 1956-2013) were selected to identify climate signals in the tree-ring series. The climate variable included monthly total precipitation, mean maximum temperature (T_{\max}), mean temperature (T_{mean}), and mean minimum temperature (T_{\min}). Months from the previous July to current August were selected for the analysis of the relationship between climate variables and Korean pine growth.

To identify climate-growth relationships of Korean pine in Laobai Mountain, a Pearson's correlation was performed between climate variables and tree growth. The stability and reliability of the reconstruction equation was assessed by the split-period calibration and verification analyses (Fritts, 1976; Cook and Kairiukstis, 1990) for the two periods 1956-1984 and 1985-2013. The Pearson's correlation coefficient (r), R square (R^2), sign test (ST), the reduction of error (RE), coefficient of efficiency (CE) and product means test (PMT) are the tools used to verify the results. To test the periodicity of the reconstructed minimum temperature in this area, a spectral analysis was performed using a multi-taper method, especially powerful for time series (Mann and Lees, 1996). All statistical analyses presented in this paper were performed using a commercial software SPSS12.0 (SPSS, Inc., Chicago, IL, USA).

3 Results and discussion

3.1 Climate-radial growth relationship

Relationships between the STD and RES chronologies and monthly climate data in Dunhua were shown in Fig. 4. Temperatures were more crucial to Korean pine growth compared with precipitation. In contrast, the correlation coefficients between Korean pine chronologies and mean minimum temperature were positive and higher than those for maximum and mean temperature. The significant correlation months between STD chronology (Fig. 4a) and mean minimum temperature were not found in the RES chronology (Fig. 4b). This indicated that the STD chronology recorded the minimum temperature signals in low frequency, but not at high frequencies. Different

combinations of months were also considered (Table 2). The best-correlated three-month season, April-July ($r = 0.757$, $p < 0.0001$), was then selected for temperature reconstruction of the mean minimum temperature (MMT) (Table 2).

It was generally accepted that extreme temperatures limited tree growth at treeline or at high latitudes forest, especially spring or early summer minimum temperature (Wilson and Luckman, 2002; Körner and Paulsen, 2004; Porter et al., 2013; Yin et al., 2015). Moreover, T_{\max} , T_{mean} and T_{\min} during the observed period of 1956-2013 illustrated similar inter-annual variations (Fig. 5), while the increase trend of T_{\min} was much higher than T_{mean} and T_{\max} , especially since 1976. This phenomenon was consistent with the results in Karl et al. (1993), Ren et al. (1998) and Tang et al. (2005). They indicated that climate warming over past decades was mostly owing to the faster rise of night or minimum temperatures. This seemed to be the case in northeast China as well. Based on the relationship between STD chronology and climate data, we found that the minimum April-July temperature played more important roles in limiting Korean pine radial growth in Laobai Mountain compared with the maximum and mean temperatures. This also meant that less warm and wet conditions in this area were suitable for Korean pine growth.

This may arise from two reasons. One, the sampling site was located at high elevations close to the upper limit of Korean pine distribution, which may cause tree growth more sensitive to minimum temperature (Szeicz and MacDonald, 1995; D'Arrigo et al., 2009; Li et al., 2011; Yu et al., 2011; Flower and Smith, 2012). High minimum temperatures in early growing season can inhibit frost damage, and thus allow the formation of a wider ring (Wu, 1990; Akkemik, 2000; Mäkinen et al., 2003). High nighttime temperatures can also promote tree respiration and enhance physiological activities, thereby producing more auxin, promoting cell enlargement, and forming a wider ring in growing season (Fritts et al., 1976). Increasing temperature may allow trees to conduct photosynthesis at the early stage of the growing season, which might produce more auxin production. Another, a crucial growth period of Korean pine in every year was from April to July. During this period, temperature could have direct effects on photosynthesis rate, cambium activity, and respiration efficiency, etc., which affecting the formation of ring width

(Li et al., 2000; Yu et al., 2011). Therefore, Korean pine radial growth was positively correlated with the average minimum temperature from April to July.

3.2 Minimum temperature reconstruction

Based on above analysis, a linear regression equation was established to reconstruct the April-July MMT. The transfer function was as follows:

$$Y = 2.987X_t + 4.829$$

$$(N = 58, R = 0.757, R^2 = 0.573, R^2_{\text{adj}} = 0.565, F = 75.161, p < 0.0001)$$

where Y was the April-July MMT and X was the tree-ring index of Korean pine chronology at year t . As shown in Fig. 6a, the reconstructed values closely tracked the observed temperature. The calibration and verification statistics

were shown in Table 3. Parameters of the split-sample validation periods indicated the reconstruction equation was stable in the whole period. Positive RE and CE values revealed a useful paleoclimatic information (Cook et al.,

1999). Significant results of ST and PMT indicated a good agreement between the actual and reconstructed data.

However, the first difference correlation (not shown) between the STD chronology and temperature did not exceed the 95% confidence level. This confirmed that the STD chronology might better capture the low-frequency

variability rather than high-frequency variability. In addition, the correlation coefficient between the first-order difference series of the actual and reconstructed values were not significant at the 0.05 level ($r = 0.12, p > 0.05$),

hence, this reconstructed minimum temperature series was more consistent with the observed series at low-frequency variability. The final calibration equation accounted for 57.3% of the total variance ($p < 0.0001$) and

passed all calibration and verification statistical requirements. Hence, this equation was reliable and allowed for the

accurate reconstruction of the April-July MMT in Laobai Mountain.

3.3 Temperature variations from 1600 to 2013 AD

The reconstructed average April-July MMT variations since 1600 AD and its 11-year moving average was shown in Fig. 6b. The 11-year moving average of the reconstructed series was used to obtain low-frequency information and analyze temperature variability in this region. Mean value of the 414-year reconstructed temperature was 7.66 °C, with a standard deviation of ± 0.53 °C. The warm and cold periods were defined when temperatures exceeded the mean value plus and minus 0.5 times standard deviation, respectively (Fig. 6b). The reconstructed April-July MMT series exhibited six cold and seven warm periods. The longest cold period lasted from 1645 to 1677 AD (33 years), with an average temperature of 0.5 °C below the mean value. The longest warm period, however, lasted from 1767 to 1785 AD (19 years), and the average temperature was 0.69 °C above the mean value (Table 4). Four cold (1605-1616, 1645-1677, 1911-1924, and 1951-1969) and warm (1795-1807, 1838-1848, 1856-1873 and 1991-2008) periods were consistent with other results of tree-ring reconstructions in northeast China (Shao and Wu, 1997; Yin et al., 2009; Wang et al., 2012; Zhu et al., 2015). In addition, two cold periods 1645-1677 and 1684-1691 were consistent with the Maunder Minimum (1645-1715), an interval of decreased solar irradiance (Bard et al., 2000). The cold period 1645-1677 also appeared in other proxy records of reconstructed temperatures, which coincided with the Little Ice Age (LIA) in the northern hemisphere (Lin et al., 2004; Wang et al., 2006; Hong et al., 2009). Cold conditions during the 17th century and the rapid warming during the mid-19th and late 20th century in northeast China was present in this series, suggesting it could be a good proxy for regional temperature variations in northeast China.

To further evaluate the reliability of this reconstruction, we compared our reconstruction series with two nearby tree-ring based reconstruction temperature series from Dunhua (Li and Wang, 2013; Fig. 7a) and Changbai Mountain (Zhu et al., 2009; Fig. 7b) and the northern hemisphere temperature reconstruction (D'Arrigo et al., 2006; Fig. 7d) (Fig. 7). Interestingly, a significant negative correlation ($r = -0.18$, $p < 0.01$) between our reconstruction (Fig. 7c) and the northern hemisphere temperature reconstruction (D'Arrigo et al., 2006) was found (Fig. 7d), while our reconstruction of April-July MMT had the similar variations in the April-September temperature reconstruction

in Dunhua ($r = 0.50$, $p < 0.01$; Fig. 7a) and the February-April temperature reconstruction in Changbai Mountain ($r = 0.45$, $p < 0.01$; Fig. 7b). The three temperature series exhibited significantly low temperature periods during the 1950s-1970s, which coincided with a slight decrease in solar activity from 1940-1970 AD (Beer et al., 2000) (Fig. 7).

It was widely believed that the LIA in China exhibited three cold periods in the 15th, 17th, and 19th centuries (Wang et al., 2003), and this was confirmed by our reconstruction series (Fig. 7c and Table 4). The first cold period in our series was less obvious, while the second one was the most obvious of all. A different beginning and ending year of the second cold period in our reconstruction was found (Fig. 7c and Table 4). In addition, there existed a regional difference for the third cold period, that is, it was obvious in south China, while had opposite phase in northeast China (Wang et al., 1998; Wang et al., 2003). The third cold period in 19th century was not obvious in our reconstruction, which was consistent with Wu (2013) and Wang et al. (1998). This also led to a bad matching with the Northern Hemisphere temperature (D'Arrigo et al., 2006). Another notable feature in Fig. 7 was a sharp temperature increase since the 1980s, and rose to the peak in the early 2000s. Temperature increase in this area was consistent with the report from the Intergovernmental Panel on Climate Change (IPCC, 2007). These series displayed similar patterns of low-frequency variations suggesting that the reconstructed temperature in northeast China was significantly correlated with large-scale variations (Fig. 7). The reconstructed April-July MMT in the past 414 years showed 128-60-, 9.9-9.7-, 4.0-, 3.8-3.7-, 3.0-2.6-, 2.4- and 2.2-year quasi-cycles at a 95% confidence level (Fig. 8).

Unfortunately, three compared temperature series also showed dissimilar variations in some cold/warm years (Fig. 7). This might be due to differences in reconstructed temperature months, parameters (such as mean, minimum, and maximum temperature), and habitat conditions in different sampling areas. Recent studies suggested that the mean, minimum and maximum temperature variations were often asymmetric (Karl et al., 1993; Xie and Cao, 1996;

Wilson and Luckman, 2002; Wilson and Luckman, 2003; Gou et al., 2008). Global warming over the past decades was mostly owing to the faster rise of night or minimum temperatures, but not maximum temperature. The unsynchronized variability among mean, minimum and maximum temperatures was found in Dunhua meteorological station (Fig. 5). The sampled site was located at a junction zone between Jilin and Heilongjiang provinces, further north than Changbai Mountain. Meanwhile, some differences of the reconstructed temperature series were explained reasonably well from the comparison with analogous regions. Consequently, these findings could reveal more characteristics of regional climate variations and provide reliable data for larger-scale climate reconstructions in northeast China.

3.4 Detection of northeast-wide cold damage or frost disaster events

As the minimum temperature approached or fell below freezing point, it may limit biological activity and growth. Therefore, years with low temperatures were often accompanied by cold damage or severe frost events. The evidence from historical documents (Sun et al., 2007) showed that cold damage or frost disaster events occurred in Heilongjiang Province since 1675 (Table 5). Extremely cold damage or frost disaster events were in good agreement with eight low temperature years (1675, 1682, 1689, 1699, 1730, 1748, 1812, and 1885 in Fig. 6b and Table 4) in reconstructed April-July MMT series during the 1600s-1800s. At the beginning of 20th century, three severe frost periods occurred in the periods 1909-1918, 1934-1945, and 1956-1972 in Heilongjiang Province (Sun et al., 2007) were represented in our reconstruction (Fig. 6b and Table 4). In addition, other low temperature years in our reconstruction corresponded to extreme frost disaster events occurred in the periods 1902-1903, 1912-1914, 1920, 1932, 1934-1936, 1940, 1947, 1956-1961, 1964-1965, 1967, and 1969 (Fig. 6b and Table 4). The results revealed that 27 of the 30 cold damage or frost disaster events corresponded to the April-July MMT lower than the 27-year moving average, while the remaining three events corresponded to higher than April-July MMT values. In contrast, we found a decreasing trend of the annual extreme low temperature frequency and cold damage or severe

frost events with the warming since the 1980s. In summary, the reconstructed April-July MMT in Laobai Mountain strongly revealed the cold damage or frost disaster events in the past 414 years.

4 Conclusions

A significant positive correlation between the tree-ring width of Korean pine and the April-July MMT was found in Laobai Mountain, northeast China, and the April-July MMT was reconstructed for the past 414 years (1600-2013). The reconstructed and instrumental temperature series exhibited coherence over the common periods. The reconstructed series showed interannual to multidecadal temperature variations over the past 414 years. The cold/warm periods of the reconstructed minimum temperature record were also observed in historical documents and several proxy temperature records in northeast China. The most notable feature of the reconstructed series was obviously rapid warming trend since the 1980s, which was also confirmed by other reconstructed temperature series. Additionally, the correspondence between the low-temperature years and the historical cold damage or severe frost events demonstrated the potential relationship between April-July MMT and extreme cold events. This temperature may provide new and valuable information for the longest temperature variations period in northeast China.

Acknowledgments This research was supported by the National Natural Science Foundation of China (Nos. 41471168 and 31370463), the Key Project of the Special Focus on “Global Change and Response” of the China National Key Research and Development Plan (2016YFA0600800), the Program for Changjiang Scholars and Innovative Research Team in University (IRT-15R09), and the Program for New Century Excellent Talents in University (NCET-12-0810). We greatly appreciate the three anonymous referees for their constructive and helpful comments in revising and improving our manuscript a lot. We thank the staff of Laobai Mountain Forestry Bureaus for their assistance in the field. Meanwhile, we greatly appreciate Neil Pederson at Harvard Forest, Harvard

University for his assistance in editing parts of the English language.

References

- Akkemik, Ü.: Dendroclimatology of umbrella pine (*Pinus pinea* L.) in Istanbul, Turkey, *Tree-Ring Bull.*, 56, 17-20, 2000.
- Bard, E., Raisbeck, G., Yiou, F., Jouzel, J.: Solar irradiance during the last 1200 years based on cosmogenic nuclides, *Tellus B.*, 52, 985-992, 2000.
- Beer, J., Mende, W., and Stellmacher R.: The role of the sun in climatic forcing, *Quaternary Sci. Rev.*, 19, 403-415, 2000.
- Bond, G., Kromer, B., Beer, J., Muscheler, R., Evans, M. N., Showers, W., Hoffmann, S., Lotti-Bond, R., Hajdas, I., and Bonani, G.: Persistent solar influence on north Atlantic climate during the Holocene, *Science*, 294, 2130-2136, 2001.
- Bouriaud, O. and Popa, I.: Reconstruction of summer temperatures in Eastern Carpathian Mountain (Rodna Mts, Romania) back to AD 1460 from tree-rings, *Int. J. Climatol.*, 34, 871-880, 2014.
- Bu, Z. J., Wang, S. Z., Lang, H. Q., and Guo, K.Q.: Vegetation vertical zone spectrum and its features on southern slope of Laobai Mountain in Huangnihe Nature Reserve, *J. Mountain Sci.*, 21, 80-84, 2003.
- Chen, Z. J., He, X. Y., Chen, W., Shao, X. M., Sun, Y., Tao, D. L.: Solar activity, global surface air temperature anomaly and Pacific Decadal Oscillation signals observed in urban outskirts tree ring records from Shenyang, China, *Adv. Space Res.*, 38, 2272-2284, 2006.
- Cook, E. R., Kairiukstis, L. A.: *Methods of dendrochronology: applications in the environmental sciences*, Kluwer Academic Publishers, Dordrecht, 1990.
- Cook, E. R., Meko, D. M., Stahle, D. W., and Cleaveland, M. K.: Drought reconstruction for the continental United States, *J. Climate*, 12, 1145-1162, 1999.

- Cook, E. R.: A time series analysis approach to tree-ring standardization, University of Arizona Press, Tucson, 1985.
- Corona, C., Guiot, J., Edouard, J. L., and Chalié, F.: Millennium-long summer temperature variations in the European Alps as reconstructed from tree rings, *Clim. Past.*, 6, 379-400, 2010.
- 5 D'Arrigo, R., Wilson, R., and Jacoby, G.: Northern Hemisphere Tree-Ring-Based STD and RCS Temperature Reconstructions, *J. Geophys. Res.*, 111, D03103, doi: 10.1029/2005JD006352, 2006.
- D'Arrigo, R., Jacoby, G., Buckley, B., Sakulich, J., Frank, D., Wilson, R., Curtis, A., Anchukaitis, K.: Tree growth and inferred temperature variability at the North American arctic treeline, *Global Planet. Change*, 65, 71-82, 2009.
- 10 Ding, Y. H., Dai, X. S.: Temperature Variation in China during the Last 100 years, *Meteorology.*, 20, 19-26, 1994.
- Flower, A., Smith, D. J.: A dendroclimatic reconstruction of June-July mean temperature in the northern Canadian Rocky Mountain, *Dendrochronologia*, 29, 55-63, 2012.
- Fritts, H. C.: Tree rings and climate, Academic Press Inc. (London) Ltd., London, UK, 1976.
- Gou, X. H., Chen, F. H., Yang, M., Gordon, J., Fang, K. Y., Tian, Q. H., and Zhang, Y.: Asymmetric variability
15 between maximum and minimum temperatures in Northeastern Tibetan Plateau: evidence from tree rings, *Sci. China Ser. D-Earth Sci.*, 51, 41-55, 2008.
- Holmes, R. L.: Computer-assisted quality control in tree-ring dating and measurement, *Tree-ring Bulletin.*, 43, 69-78, 1983.
- Hong, B., Liu, C. Q., Lin, Q. H., Yasuyuki, S., Ling, X. T., Wang, Y., Zhu, Y. X., and Hong, Y. T.: Temperature
20 evolution of the last 14000 years of the Hani peat $\delta^{18}\text{O}$, *Sci. China Earth Sci.*, 39, 626-637, 2009.
- IPCC: Climate Change 2007: The Physical Science Basis, Cambridge University Press, Cambridge, UK and New York, USA, 2007.
- Karl, T. R., Jones, P. D., Knight, R. W., Kulas, G., Plummer, N., Razuvayev, V., Gallo, K. P., Lindsey, J., Charlson,

- R. J., and Peterson, T. C.: A new perspective on recent global warming: asymmetric trends of daily maximum and minimum temperature, *Bull. Am. Meteorol. Soc.*, 74, 1007-1023, 1993.
- Körner, C., and Paulsen, J.: A world-wide study of high altitude treeline temperatures, *J. Biogeogr.*, 31, 713-732, doi: 10.1111/j.1365-2699.2003.01043.x, 2004.
- 5 Kress, A., Hangartner, S., Bugmann, H., Büntgen, U., Frank, D. C., Leuenberger, M., Siegwolf, R. T. W., and Saurer, M.: Swiss tree rings reveal warm and wet summers during medieval times, *Geophys. Res. Lett.*, 41, 1732-1737, 2014.
- Lean, J., and Rind, D.: Evaluating sun-climate relationships since the Little Ice Age, *J. Atmos. Sol. Terr. Phys.*, 61, 25-36, 1999.
- 10 Li, G.Q., Bai, F., and Sang, W. G.: Different responses of radial growth to climate warming in *Pinus koraiensis* and *Picea jezoensis* var. *komarovii* at their upper elevational limits in Changbai Mountain, China, *Chinese J. Plant Ecol.*, 35, 500-511, 2011.
- Li, J. F., Yuan, Y. J., and You, X. R.: Research and application of dendrohydrology, Science Press, Beijing, 2000.
- Li, M. and Wang, X. C.: Climate-growth relationships of three hardwood species and Korean pine and minimum
15 temperature reconstruction in growing season in Dunhua, China, *J. Nanjing Forestry Univ. (Natural Sci. Ed.)*, 37, 29-34, 2013.
- Lin, Q. H., Leng, X. T., and Hong, B.: The Peat Record of the Climate Change in Daxing Anling, *Bull. Mineral. Petrol. Geochem.*, 3, 15-18, 2004.
- Liu, Y., Wang, Y. C., Li, Q., Sun, J. Y., Song, H. M., Cai, Q. F., Zhang, Y. H., Yuan, Z. L., and Wang, Z. Y.:
20 Reconstructed May-July mean maximum temperature since 1745 AD based on tree-ring width of *Pinus tabulaeformis* in Qianshan Mountain, China, *Palaeogeogr. Paleoclimatol. Palaeocl.*, 388, 145-152, 2013.
- Mäkinen, H., Nöjd, P., Kahle, H. P., Neumann, U., Tveite, B., Mielikäinen, K., Röhle, H., and Spiecker, H.: Large-scale climatic variability and radial increment variation of *Picea abies* (L.) Karst. in central and northern

- Europe, *Trees.*, 17, 173-184, 2003.
- Mann, M. E. and Lees, J. M.: Robust estimation of background noise and signal detection in climatic time series, *Clim. Change*, 33, 409-445, 1996.
- Poretor, T. J., Pisaric, M. F., Kokelj, S. V., and deMontigny, P.: A ring-width-based reconstruction of June–July
 5 minimum temperatures since AD 1245 from white spruce stands in the Mackenzie Delta region, northwestern
 Canada, *Quaternary Res.*, 80, 167-179, 2013.
- Ren, F. M., and Zhai, P. M.: Study on Changes of China's Extreme Temperatures During 1951~1990, *Scientia
 Atmospherica Sinica.*, 22, 217-227, 1998.
- Shao, X. M. and Wu, X. D.: Reconstruction of climate change on Changbai Mountain, Northeast China using
 10 tree-ring data, *Quaternary Sci.*, 1, 76-83, 1997.
- Stokes, M. A., and Smiley, T. L.: *Tree-ring dating*, the University of Chicago Press, Chicago and London, 1968.
- Sun, Y. G.: *Grand dictionary of China meteorological disasters: Volume Heilongjiang*, China Meteorological Press,
 Beijing, 2007.
- Szeicz, J.M., and MacDonald, G.M.: Dendroclimatic reconstruction of summer temperatures in northwestern
 15 Canada since A.D. 1638 based on age-dependent modelling, *Quaternary Res.*, 44, 257-266, 1995.
- Tang, H. Y., Zhai, P. M., and Wang, Z. Y.: On Change in Mean Maximum Temperature, Minimum Temperature and
 Diurnal Range in China During 1951-2002, *Climatic Environ. Res.*, 10, 728-735, 2005.
- Wang, J. S., Chen, F. H., Yang, B., and Chen, J. H.: New advances in research on the Little Ice Age climate change,
Adv. Climate Change Res., 2, 21-27, 2006.
- 20 Wang, S. M, Liu, J., and Zhou, J.: The Climate of Little Ice Age Maximum in China, *J. Lake Sci.*, 15, 369-379,
 2003
- Wang, S. W., Ye, J. L., and Gong, D. Y.: Climate in China during the little ice age, *Quaternary Sci.*, 1, 54-64, 1998.
- Wang, W. W., Zhang, J. H., Dai, G. H., Wang, X. X., Han, S. J., Zhang, H.S., and Wang, Y.: Variation of autumn

- temperature over the past 240 years in Changbai Mountain of Northeast China: A reconstruction with tree- ring records, *Chin. J. Ecol.*, 31, 787-793, 2012.
- Wang, X. C., Brown, P. M., Zhang, Y. N., and Song L.: Imprint of the Atlantic Multidecadal Oscillation on tree-ring widths in Northeastern Asia since 1568, *PLoS ONE*, 6: e22740, 2011.
- 5 Wang, Z. Y., Ding, Y. H., He J. H., and Yu, J.: An updating analysis of the climate change in China in recent 50 years, *Acta Meteorologica Sinica.*, 62, 228-236, 2004.
- Wigley T. M. L., Briffa K. R., Jones P. D.: On the average value of correlated time series, with applications in dendroclimatology and hydrometeorology. *J. Clim. Appl. Meteorol.*, 23, 201-213, 1984.
- Wilson, R. J. S., and Luckman. B. H.: Tree-ring reconstruction of maximum and minimum temperatures and the
10 diurnal temperature range in British Columbia, Canada, *Dedrochronologia*, 20, 1-12, 2002.
- Wilson, R. J. S., and Luckman, B. H.: Dendroclimatic reconstruction of maximum summer temperatures from upper treeline sites in Interior British Columbia, Canada, *The Holocene*, 13, 851-861, doi: 10.1191/0959683603hl663rp, 2003.
- Wu, X. D.: Tree-rings and climate change, China Meteorological Press, Beijing, 1990.
- 15 Wu, Y. H.: Characteristics of Climate Changes in the Little Ice Age in China, *J. Changchun Normal Univ. (Natural Sci. Ed.)*, 32, 74-82, 2013.
- Xie, Z., Cao, H.X.: Asymmetric changes in maximum and minimum temperature in Beijing, *Theor. Appl. Climatol.*, 55, 151-56, 1996.
- Yin, H., Guo, P. W., Liu, H. B., Huang, L., Yu, H. M., Guo, S. Y., and Wang, F.: Reconstruction of the October mean
20 temperature since 1796 at Wuying from tree ring data, *Adv. Climate Change Res.*, 5, 18-23, 2009.
- Yin, H., Liu, H. B., Linderholm, H. W., Sun, Y.: Tree ring density-based warm-season temperature reconstruction since A.D. 1610 in the eastern Tibetan Plateau, *Paleogeogr. Paleoclimatol. Palaeocl.*, 426, 112-120, 2015.
- Yu, D. P., Wang, Q. W., Wang, Y., Zhou, W. M., Ding, H., Fang, X. M., Jiang, S. W., and Dai, L. M.: Climatic

effects on radial growth of major tree species on Changbai Mountain, *Ann. Forest Sci.*, 68, 921-933, 2011.

Zhao, C. Y., Ren, G. Y., Zhang, Y. F., and Wang, Y. F.: Climate change of the Northeast China over the past 50 years, *J. Arid Land Resources Environ.*, 23, 25-30, 2009.

Zhu, H. F., Fang, X. Q., Shao, X. M., and Yin, Z. Y.: Tree ring-based February-April temperature reconstruction for
5 Changbai Mountain in Northeast China and its implication for East Asian winter monsoon, *Clim. Past.*, 5,
661-666, 2009.

Zhu, L. J., Li, S. Y., Wang X. C.: Tree-ring reconstruction of February-March mean minimum temperature back to
1790 A.D in Yichun, Northeast China, *Quaternary Sci.*, 35, 1175-1184, 2015.

Tables

Table 1. Major statistical characteristics for the chronology of *Pinus koraiensis* in Laobai Mountain.

	STD	RES
Number of cores	71	71
Time span	1600-2015	1600-2015
Mean sensitivity	0.12	0.14
Standard deviation	0.20	0.12
Correlations between trees	0.22	0.28
Correlations within trees	0.68	0.51
Signal-to-noise ratio	8.72	11.81
Autocorrelation order1	0.72	0.03
Agreement with population chronology	0.90	0.92
Variance in first eigenvector	28.51%	30.03%
First year where EPS>0.85 (No. of trees)	1660 (11)	1685 (15)

Table 2. Correlation coefficients between the STD chronology and the climate data of different month combinations during the common period of 1956–2013.

Months	T_{mean}	T_{min}	T_{max}
c4-c7	0.577**	0.757**	0.177
c4-c8	0.557**	0.717**	0.183
c4-c9	0.599**	0.726**	0.217
c5-c7	0.556**	0.749**	0.198
c5-c8	0.522**	0.691**	0.198
c5-c9	0.587**	0.709**	0.236
c6-c8	0.447**	0.634**	0.199
c6-c9	0.535**	0.671**	0.241
p7-c8	0.586**	0.682**	0.230

* Significant at the 0.05 level (two-tailed). ** Significant at the 0.01 level (two-tailed).

Table 3. Calibration and verification statistics of the reconstruction equation for the common period of 1956-2013

Calibration	R	R^2	Verification	R	Reduction of Error	Coefficient of efficiency	Sign Test	Product Mean Test
whole Section (1956-2013)	0.757**	0.573**	-	-	-	-	-	-
Front Section (1956-1984)	0.414*	0.171*	Back Section (1985-2013)	0.632**	0.738**	0.446**	(20, 9)*	4.586**
Back Section (1985-2013)	0.632**	0.400**	Front Section (1956-1984)	0.414*	0.738**	0.634**	(22, 7)**	6.099**

* Significant at the 0.05 level (two-tailed). ** Significant at the 0.01 level (two-tailed).

Table 4. Cold and warm periods based on the 11-year moving average April-July mean minimum temperature in Laobai Mountain during 1600-2013 AD.

Rank	Cold period			Warm period		
	period	Year	Mean (°C)	period	Year	Mean (°C)
1	1605-1616	12	7.41	1767-1785	19	8.35
2	1645-1677	33	7.19	1787-1793	7	8.01
3	1684-1691	8	7.19	1795-1807	13	8.00
4	1911-1924	14	7.09	1819-1826	8	8.07
5	1930-1942	13	7.27	1838-1848	11	8.13
6	1951-1969	19	7.08	1856-1873	18	8.13
7				1991-2008	18	8.38

Table 5. Cold damage or frost disaster events recorded in historical archives in Heilongjiang Province since 1675
(Sun et al., 2007).

17 th century	18 th century	19 th century	20 th century
1675	1730	1800-1801	1901-1903
1682	1746	1812-1813	1909-1915
1689	1749	1830-1832	1917
1699	1748	1878-1879	1920
	1755	1885	1925-1926
	1757		1931-1932
			1934-1936
			1939-1943
			1947
			1950-1969
			1998-1999
			1971-1981

Figure captions

Fig. 1 Map of the sampling site, the compared temperature series, nearby temperature series and meteorological station in northeast China. The photo showed the sampled site in Laobai Mountain and the remarkable vertical vegetation distribution along altitude changes.

Fig. 2 Mean monthly temperature (°C) and total precipitation (mm) at Dunhua meteorological station for the period from 1956 to 2013.

Fig. 3 Variations of the STD (a) and RES (c) chronology and sample depth, and the expressed population signal (EPS) and average correlation between all series (R_{bar}) of the STD (b) and RES (d) chronology from 1600 to 2015 AD.

Fig. 4 Correlations between the monthly mean meteorological data (including mean temperature, mean maximum temperature, mean minimum temperature, and total precipitation) from Dunhua meteorological station (1956-2013) and (a) the STD chronology and (b) RES chronology, respectively. The dashed horizontal line represents the 95% confidence limit.

Fig. 5 Inter-annual variation of the mean maximum (a), mean (b) and mean minimum temperatures (c) from 1956 to 2013. The straight line represents the fitted trend line, respectively.

Fig. 6 (a) Actual (black line) and reconstructed (blue line) April-July minimum temperature for the common period of 1956-2013; (b) Reconstruction of April-July minimum temperature in Laobai Mountain for the last 414 years. The smoothed line indicates the 11-year moving average, and blue dots represent minimum freezing events.

Fig. 7 (a) April-September mean minimum temperature reconstructed by Li and Wang (2013) in Dunhua, (b) February-April temperature established by Zhu et al. (2009) in Changbai Mountain, (c) April-July minimum temperature in Laobai Mountain, and (d) Northern Hemisphere extratropical temperature (D'Arrigo et al., 2006). Black lines denote temperature reconstruction values, and red color lines indicate the 11-year moving average.

Fig. 8 Multi-taper method power spectra of the reconstructed minimum temperature (1600-2013 AD). Peaks above the dotted line represent significant periods at the $p < 5\%$.

Fig. 1

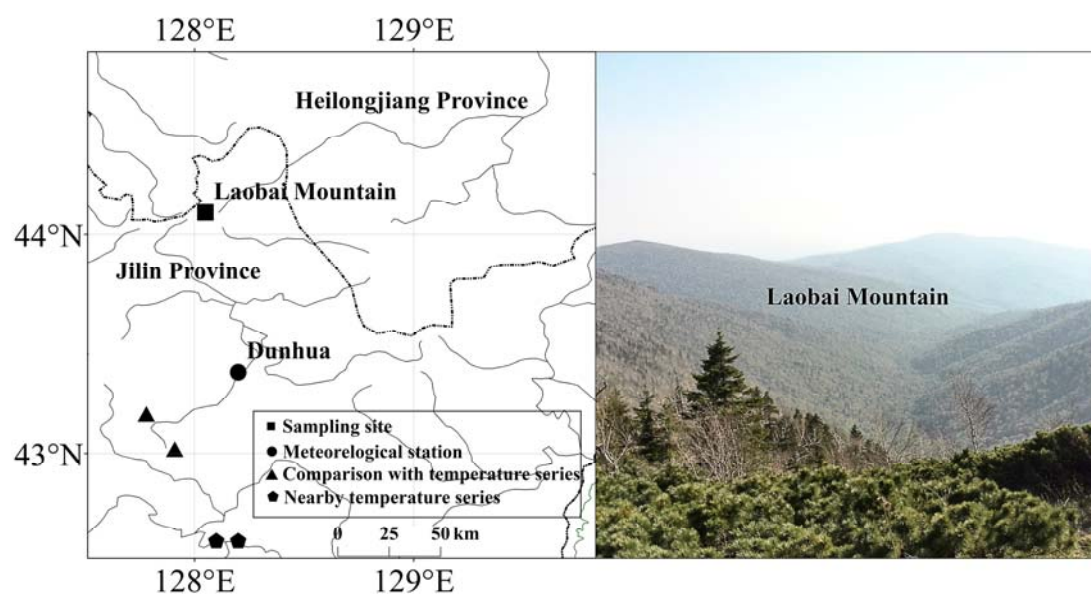


Fig. 2

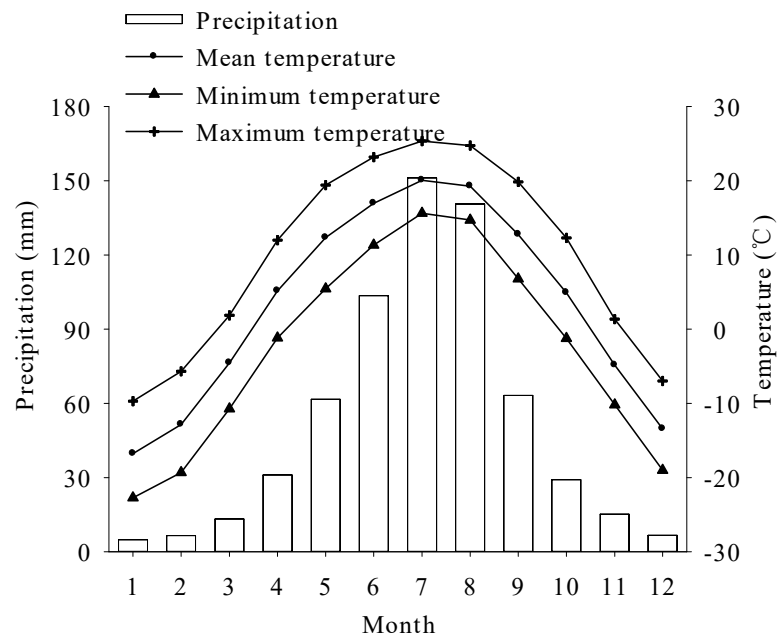


Fig. 3

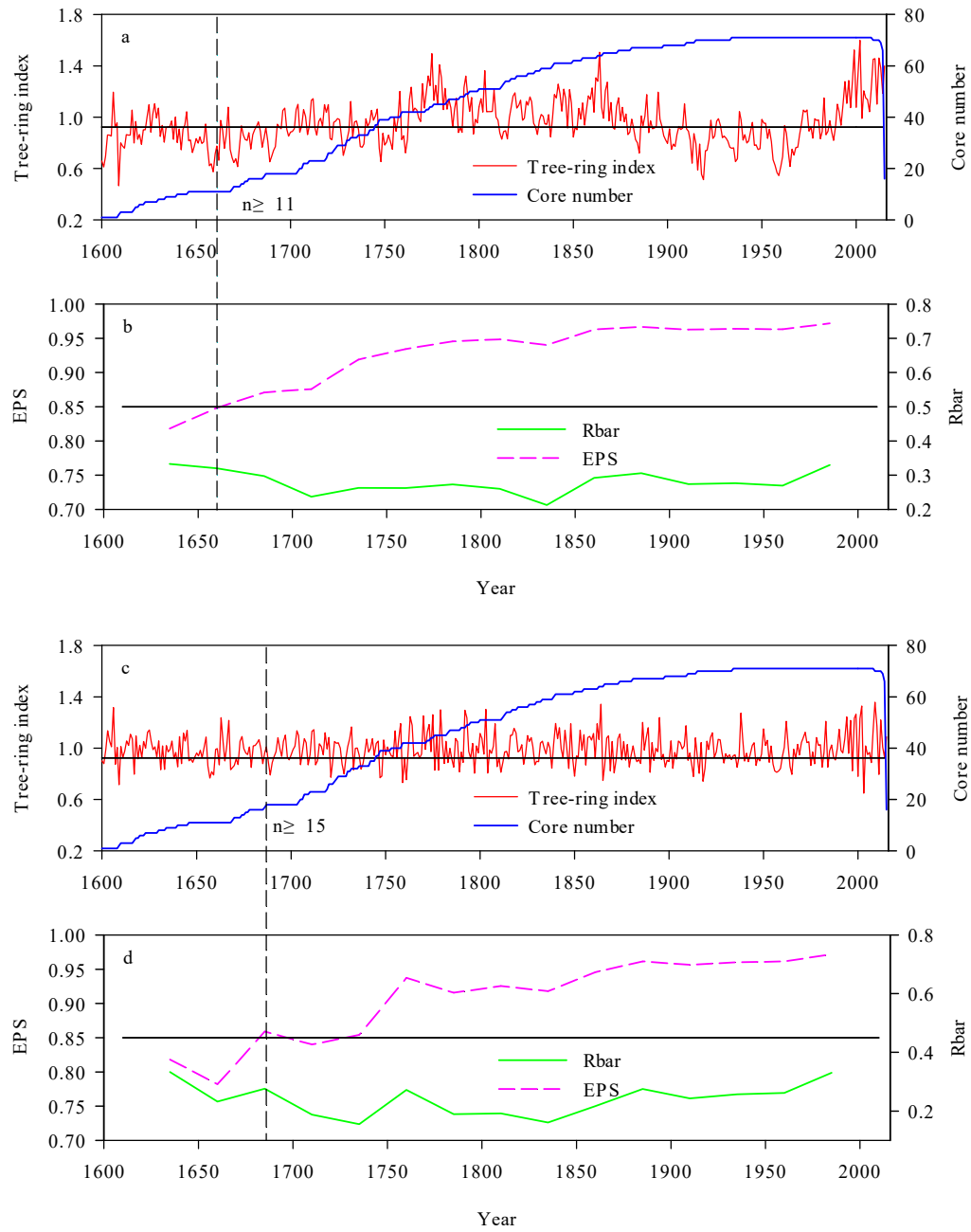


Fig. 4

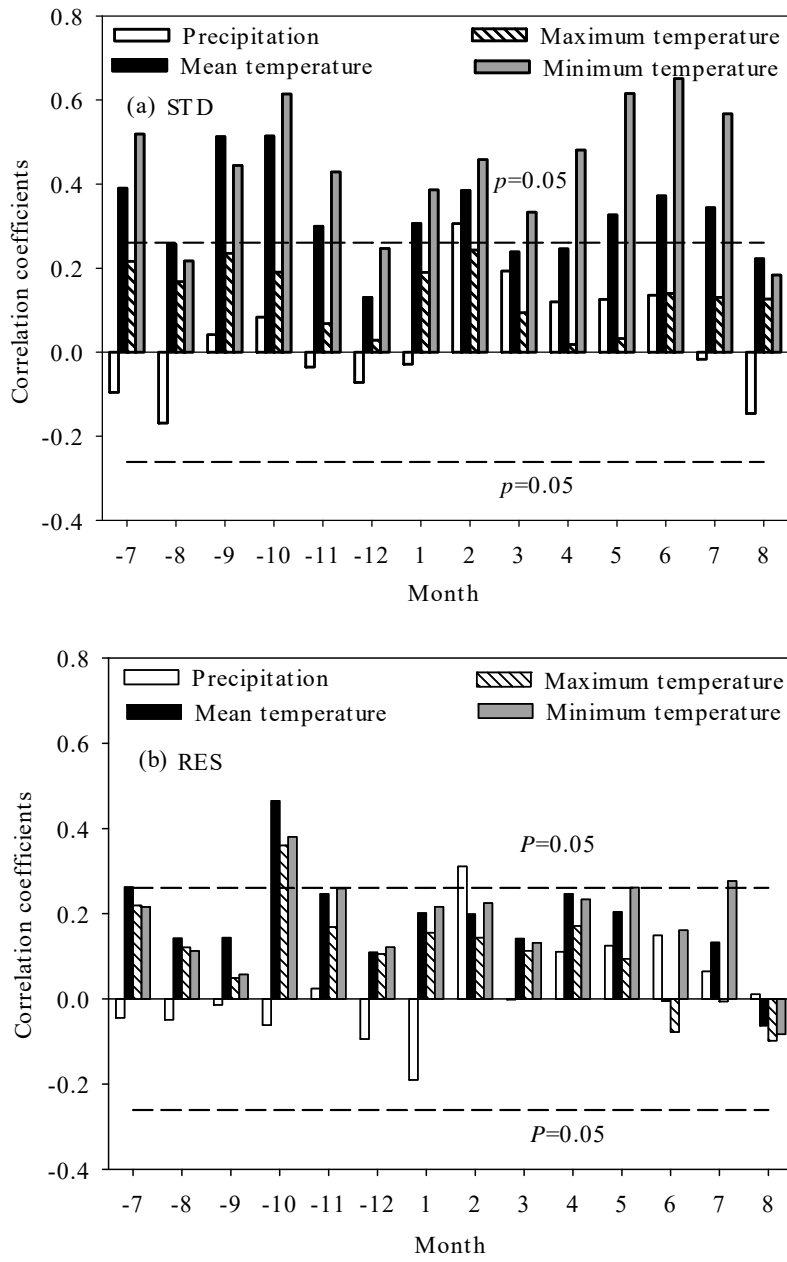


Fig. 5

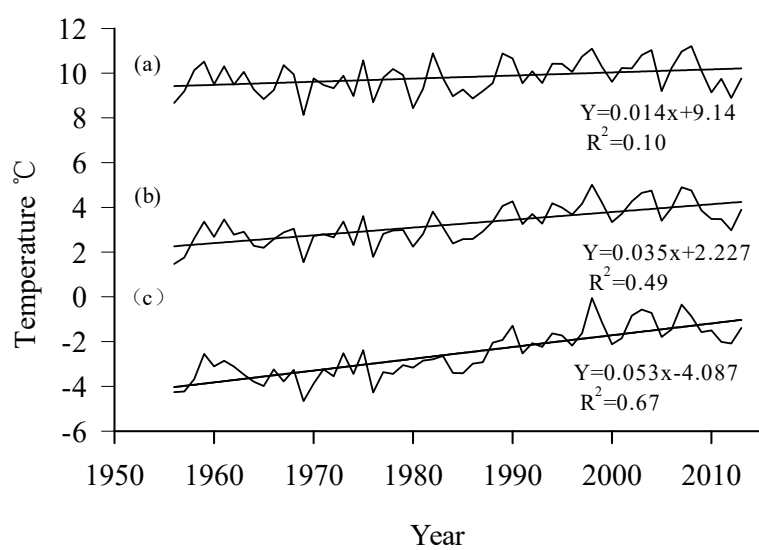


Fig. 6

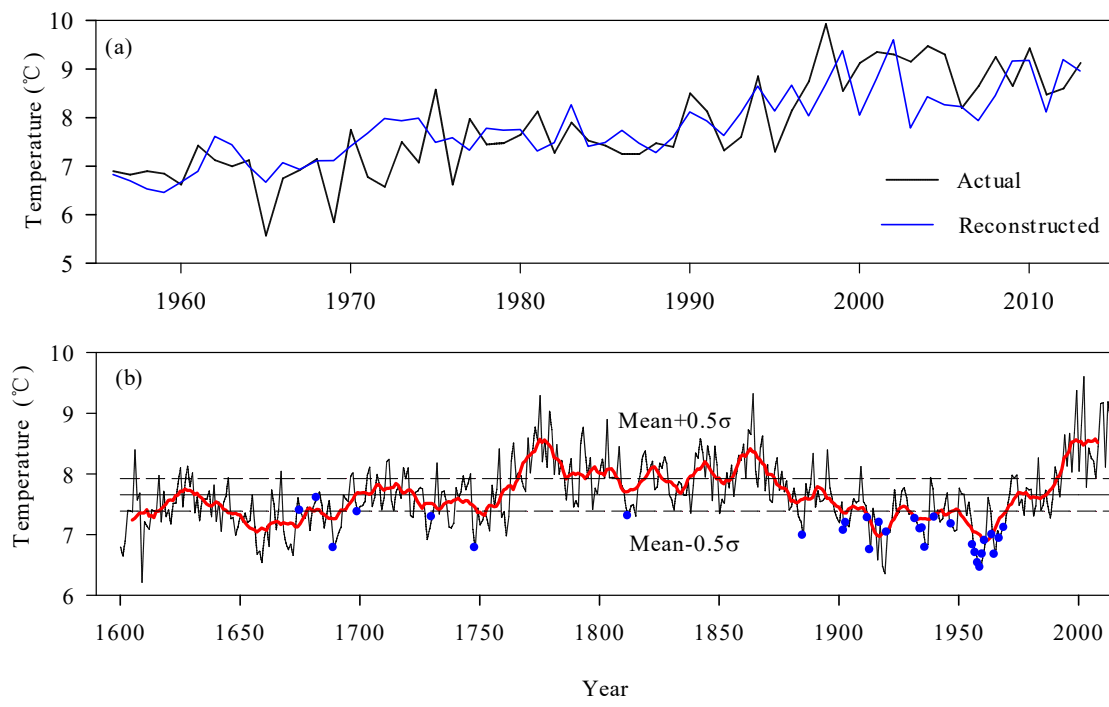


Fig. 7

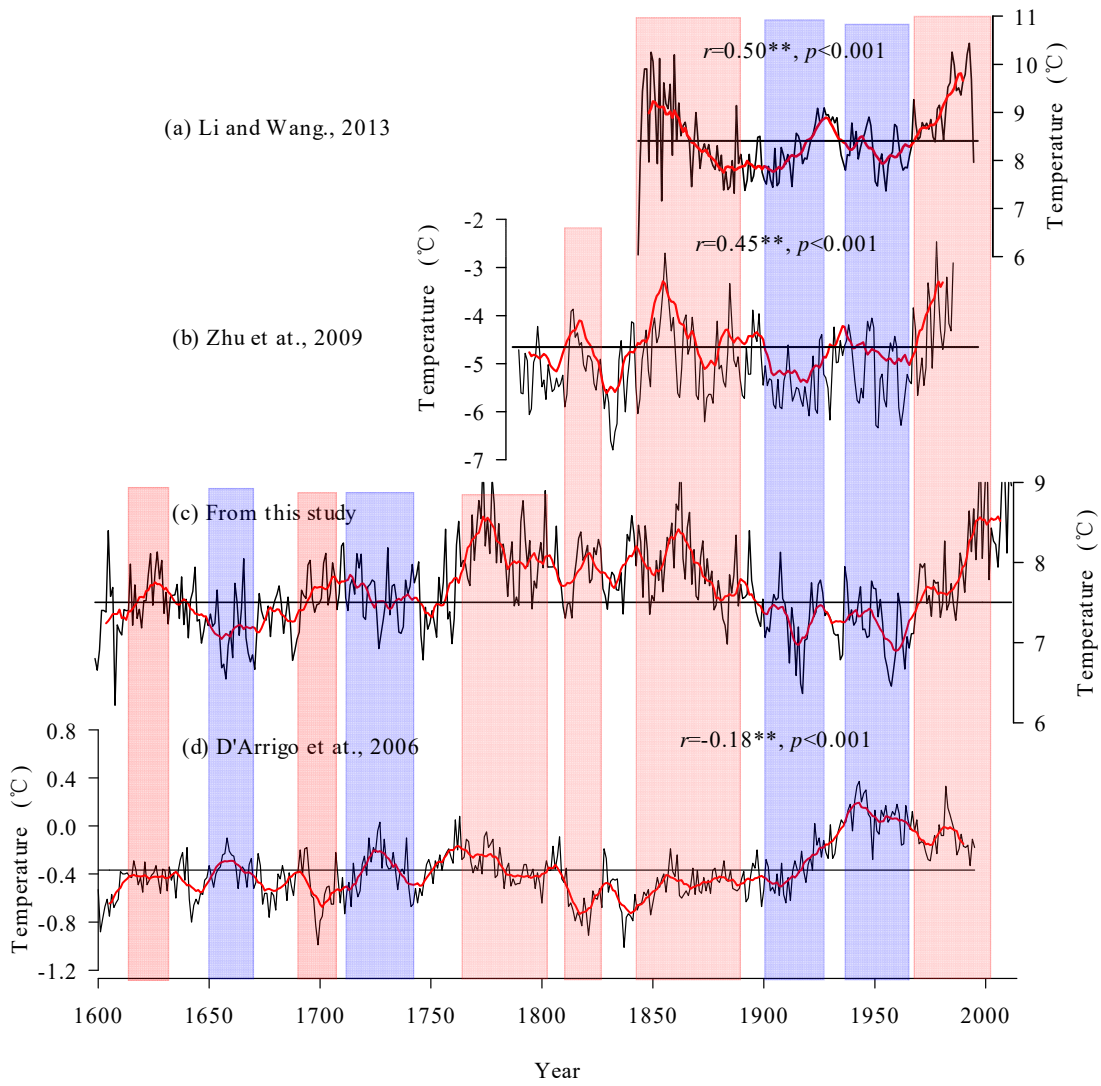


Fig. 8

