

April–August temperatures in the Czech Lands, 1499–2012, reconstructed from grape-harvest dates

M. Možný¹, R. Brázdil^{2,3}, P. Dobrovolný^{2,3} and M. Trnka^{3,4}

5 ¹Czech Hydrometeorological Institute, Doksany Observatory, 41182 Doksany, Czech Republic

²Institute of Geography, Masaryk University, Kotlářská 2, 61137 Brno, Czech Republic

³Global Change Research Institute AS CR, Bělidla 986/4a, 60300 Brno, Czech Republic

⁴Faculty of Agronomy, Mendel University in Brno, Zemědělská 1, 61300 Brno, Czech Republic

10 *Correspondence to:* Martin Možný (martin.mozny@chmi.cz), Rudolf Brázdil (brazdil@sci.muni.cz)

Abstract. Viticulture has long been essential to the commercial and social well-being of parts of the Czech Lands (recently the Czech Republic), and detailed records have been kept for centuries of the timing and relative success of the grape crop. Using such documentary data from the Bohemian wine-growing region (mainly north-west of the capital, Prague), series of grape-harvest dates (GHDs) were created for the 1499–2012 period. Because the link between harvest dates and

15 temperatures is strong, GHD series, together with instrumental mean temperature series starting in 1801, were used to reconstruct mean April–August temperatures for the region from 1499 to 2012. Linear regression (LR) and variance scaling (VS) methods were used for calibration and compared in terms of explained variance and their ability to capture extreme values. It emerged that LR does not significantly underestimate temperature variability. However, VS shows far greater capacity to capture extremes. GHDs explain 64% of temperature variability over the full calibration period. The 1971–2012

20 period was identified as the warmest of the past 514 years, an observation consistent with recent global warming. The highest April–August temperatures appeared in reconstruction for the year 1540, which was warmer than the next two very warm, and far more recent, seasons in 2000 and 2003. The coldest period occurred at the beginning of the 20th century (1900–1929). The series reconstructed for the Czech Lands is in close agreement with other (central) European reconstructions based on other proxies. The series created here makes an important contribution to a better understanding of

25 long-term spatio-temporal temperature variability in central Europe.

1 Introduction

A specific set of climatic circumstances is crucial to the achievement of complete vine grape maturation, and climate variability determines year-to-year differences in the yield and quality of the wine produced (Jones and Hellman, 2003). Temperature and solar irradiance are particularly critical variables, since they have a direct effect on the length of the

30 growing season, phenological stages, grape yields, and the synthesis and accumulation of sugars, organic acids, polyphenols, vitamins and aromatic compounds in the berries (Jones et al., 2005; Keller, 2010). The warming trend in recent climate change has accelerated ripening and induced changes in grape composition (Jones et al., 2012).

Documentary data may provide important proxies for the study of past climate evolution (Brázdil et al., 2005, 2010; Jones et al., 2009). Grape-harvest dates (GHDs) are well suited to the reconstruction of interannual variations in spring/summer temperatures over large parts of Europe. The prevailing temperatures during the stages before flowering and *veraison* (colour and profound composition changes) have been established as the most influential upon GHDs (Chuine et al., 2004; Garcia de Cortázar-Atauri et al., 2010). GHDs have been used for reconstruction of temperature series in France (Le Roy Ladurie and Baulant, 1980; Chuine et al., 2004; Le Roy Ladurie, 2005; Menzel, 2005; Etien et al., 2008; Garnier et al., 2010), Switzerland (Pfister, 1981, 1984; Burkhardt and Hense, 1985; Meier et al., 2007; Wetter and Pfister, 2013), Germany (Glaser and Hagedorn, 1991), Austria (Strömmer, 2003; Maurer et al., 2009), Italy (Mariani et al., 2009), Hungary (Kiss et al., 2011) and Luxembourg (Molitor et al., 2016).

Daux et al. (2012) created an open-access dataset of GHD data from different parts of Europe. However, when addressing GHD series, a number of uncertainties should be taken into account, largely associated with changes in varieties, viticulture techniques, climatic impacts on vines at interannual and decadal scales, and missing data (Meier et al., 2007; Garcia de Cortázar-Atauri et al., 2010; Krieger et al., 2011).

Wine production in the Czech Lands (since 1993 the Czech Republic) is limited to two regions – southern Moravia and north-western Bohemia. In an analysis of the long-term viticultural data available in the Czech Lands, Brázdil et al. (2008) concluded that temperature reconstruction prior to AD 1800 was rendered difficult by insufficient data coverage. However, newly-acquired records of grape-harvest dates from the Bohemian wine-growing region have now allowed a longer-term chronology of GHDs to be created, and it makes extended temperature reconstruction possible. In the light of this, the aim of this study is a reconstruction of April–August temperatures for the Czech Lands over the 1499–2012 period. This contribution describes the area studied and outlines basic data and methods used for reconstruction (Sections 2 and 3), presents a new Czech temperature reconstruction, its fluctuations and some comparisons with other temperature reconstructions in Central Europe (Section 4) and discusses the results achieved (Section 5). The final section contains some concluding remarks.

2 Area and data

The Czech Republic is located in central Europe and is characterised by a moderate, humid climate, with the year divided into four distinct annual seasons (Tolasz et al., 2007). The Bohemian wine-growing region is comparatively small, situated near the capital Prague in the north-west of the country, near the Vltava, Ohře and Elbe rivers and is protected by the Krušné hory Mts., the Doupovské hory Mts., and the Czech central mountains to the northwest, all of which combine to create a rain-shadow effect. It features protected slopes facing south, south-west and south-east at elevations between 170 and 260 m. The vineyards are located around the city of Prague and the towns of Litoměřice, Roudnice nad Labem, Mělník, Most, Slaný, Kutná Hora, Louny and Karštejn (Fig. 1a). In the environmental conditions prevailing in recent times in the Czech Republic, the significant phenophases of vine (*Vitis vinifera*) occur on the following days on average: leaf-bud burst on 20 April–8 May, beginning of flowering on 5–15 June, end of flowering on 15–26 June, and softening of berries on 1–29

August (Hájková et al., 2012). The mean annual temperature achieves 8.7°–8.9°C (15°–15.3°C for April–August season) and the mean annual precipitation totals are 480–540 mm (255–280 mm for April–August season) for the 1961–2000 period in the area studied. The entire Czech wine region falls into Region I according to the standard growing degree-days (GDD), representing climate type “Cool” according to the Huglin Index (HI), and cool climate maturity according to the average
5 growing season temperature index (GST). These indices are used to characterize the climatic conditions suitable for specific wine-grape cultivars and the general types of wine that can be produced (Jones et al., 2010).

Legend has it that the first Czech vineyard, near the town of Mělník, was established by St. Wenceslas (907–935), King of Bohemia, considered the patron saint of the Bohemian wine-growing region (Fig. 2a). In the year 1358, Emperor Charles IV (1316–1378) contributed an essential stimulus when he decreed that vineyards should be established wherever
10 suitable. He brought Burgundy grape varieties to Bohemia and gave a twelve-year exemption from taxes to those who started vineyards (Kraus et al., 2005).

For 1845 to the present, the relevant GHDs were taken from the PHENODATA database of the Czech Hydrometeorological Institute (CHMI), which includes systematic phenological observations from several hundred sites across territory of the recent Czech Republic (Svitáková et al., 2005). For the period prior to this, GHDs were obtained from
15 chronicles, documentary records kept by town authorities, documentary records of aristocratic origin (in particular from the Lobkowicz and Nostitz families), ecclesiastical documentary records (Archdiocese of Prague, Order of Cistercians), farming calendars, personal diaries, farming records, and reports. Among the earliest records are those from the towns of Litoměřice (Smetana, 1978) and Mělník (Böhm, 1892), and financial records kept for Bohemian viticulture (e.g. Schams, 1835; Šimáček, 1891; Honzík, 1897). For example, documentation for the year 1602 records: “Beginning of grape harvest on 14th
20 October, harvest lasted for nine days, good wine” (Lobkowicz records); “Grape harvest on 15th October, grape-picking lasted eight days, wages paid for six men and forty-two women” (Mělník records); and “Harvest of sacramental wine on 16th October” (Archdiocese of Prague records). Each town had a wine grower’s guild that organized the beginning of the grape harvest. For example, the Mělník town guild started in 1542; numerous relics of its work survive, including written records (Fig. 2b–c).

25 Records of GHDs for the Bohemian wine-growing region were thus ascertained for the 1499–2012 period (Fig. 1b). In total, 5,363 harvest dates from 61 sites were collected. The new Czech GHD series is made up of grape harvest dates recorded in contemporary manuscripts (1499–1844) and those observed by institutional phenological networks (1845–2012). Documentary data earlier than AD 1584 have been re-dated to the Gregorian calendar by adding 10 days to the previous Julian calendar. The majority of observations go back to 1921, whereas relatively fewer data are available before 1700.
30 There are no temporal gaps; at least one entry was found for each year. While up to 1844 timing differences in GHD between individual places averaged 1–3 days, a further increase in the number of sites in the phenological network (see Fig. 2b) led to differences of 1–8 days. The mean GHD time series for the 1499–2012 series was taken as a median value for all site data in the given year.

Mean Czech temperatures for 1800–2010 (Brázdil et al., 2012a, 2012b), were used as a target climatological series for temperature reconstruction during the pre-instrumental records for GDHs. To put the Czech April–August temperature reconstruction into a wider European context, the following temperature series were selected for comparison (only those starting in the 16th century):

- 5 1) AMJJA, central Europe, documentary data (Dobrovolný et al., 2010)
- 2) JJA, central Europe, various proxies (Luterbacher et al., 2004)
- 3) JJA, Low Countries, documentary data (van Engelen et al., 2001)
- 4) AMJJA, Swiss Plateau, grape-harvest dates (Meier et al., 2007)
- 5) AMJJA, Burgundy, France, grape-harvest dates (Chuine et al., 2004)
- 10 6) MJJ, Vienna and Klosterneuburg region, Austria, grape-harvest dates (Maurer et al., 2009)
- 7) MJJ, Közseg, Hungary, grape-harvest dates (Kiss et al., 2011)
- 8) AMJJ, Switzerland, grape-harvest dates (Wetter and Pfister, 2013)
- 9) MAMJJ, northern Switzerland and south-western Germany, grain-harvest dates (Wetter and Pfister, 2011)
- 10) MAMJJ, Czech Lands, winter wheat-harvest dates (Možný et al., 2012)
- 15 11) JJA, European Alps, multiproxies (Trachsel et al., 2012)
- 12) AMJJAS, western Europe, multiproxies (Guiot et al., 2005)
- 13) JJA, Europe, multiproxies (Luterbacher et al., 2016)
- 14) JJA, western and central Europe, tree-ring widths (Büntgen et al., 2011)
- 15) JJAS, Alps, tree-ring widths (Büntgen et al., 2006)
- 20 16) JJ, central-eastern Alps, tree-ring widths (Wilson and Topham, 2004).

3 Methods

The mean GHD series for the Bohemian wine-growing region was further used as a predictor for temperature reconstruction for the Czech Lands in the 1499–2012 period. Two approaches were taken to calibration: simple linear regression (LR) and variance scaling (VS). LR uses least squares estimation to minimize mean square error (MSE) between target data and
 25 reconstructed temperature. However, regression-based reconstructions usually underestimate the variability of reconstructed temperatures to a significant extent (Esper et al., 2005). Moreover, their capacity for capturing extreme values is limited. In contrast to regression, variance scaling (matching) re-scales proxy data to fit target measured temperatures by providing them with the same mean and variance over the calibration period (McCarroll et al., 2015). Thus VS reconstruction usually captures the full range of measured temperatures and also better reproduces extreme values. However, a higher MSE is a
 30 drawback of VS in comparison with regression.

Two statistical measures were employed herein to allow objective comparison of the two approaches above (McCarroll et al., 2015). In linear regression, squared correlation coefficient (r^2) compares MSE based on regression estimates with MSE based on the mean (climatology). Similarly, the equivalent variance explained (r^2_{vs}) compares MSE

based on variance scaling with MSE based on the mean (climatology). The r^2_{vs} has a straightforward interpretation – if its value falls below zero, variance-scaled reconstruction has less skill than simply using the mean values of data over the calibration period. Moreover, differences between r^2 and r^2_{vs} measure the degree of loss in variance accounted for VS-based reconstruction compared with LR-based reconstruction.

5 Extreme value capture employs a similar logic, comparing how many extreme years (defined, for example, as 10% of the highest and 10% of the lowest measured temperatures in the full calibration period) are captured by either LR-based or VS-based reconstructions. The generally lower variability of regression-based reconstruction also means that its ability to capture the same extreme years is lower, while variance scaling may improve the ability to identify the same extreme years as occur in measured data. The extreme value capture approach tests whether the number of identified extremes in
10 reconstruction is significantly higher than would occur by chance alone. For more details of calculation of equivalent variance and the extreme value capture, see McCarroll et al. (2015).

Final calibration was performed for the full period of overlap (1811–2010), for verification purposes divided into early (1811–1910) and late (1911–2010) sub-periods, and the two calibration/verification schemes for LR and VS deployed. Calibration was done on one of the sub-periods and verification undertaken on the other. The whole process was then
15 repeated with calibration/verification sub-periods switched.

The quality of calibration was evaluated by means of the square of Pearson’s correlation coefficient (r^2), which measures the degree of common variance explained and with Durbin-Watson test statistics (DW), which diagnoses the degree of first-order autocorrelation within the regression residuals; values between 1.5 and 2.5 are generally acceptable, while those outside this range indicate problems with reconstructing multi-decadal variations (Montgomery et al., 2012).
20 DW is calculated as:

$$DW = \frac{\sum_{t=2}^n (e_t - e_{t-1})^2}{\sum_{t=1}^n e_t^2}$$

where e_t is the residual associated with the observation at time t .

25 Verification was based on r^2 , reduction of error (RE) and coefficient of efficiency (CE). RE indicates whether a reconstruction provides a better estimate of temperature variability than simply using the mean value of target temperatures in the calibration period. CE is similar to RE but it tests reconstruction skill against the mean value of target temperatures in the verification period. RE is calculated as:

$$RE = 1 - \left[\frac{\sum_{i=1}^n [(x_i - \hat{x}_i)]^2}{\sum_{i=1}^n [(x_i - \bar{x}_c)]^2} \right]$$

where x_i and \hat{x}_i are target and reconstructed temperatures for the verification period, the mean value of target temperatures in the calibration period \bar{x}_c . CE is similar to RE but it tests reconstruction skill against the mean value of target temperatures in the verification period (\bar{x}_v):

$$CE = 1 - \left[\frac{\sum_{i=1}^n [(x_i - \hat{x}_i)]^2}{\sum_{i=1}^n [(x_i - \bar{x}_v)]^2} \right]$$

The formulas for RE and CE calculation may be found elsewhere (Možný et al., 2012). Both RE and CE provide values between 1 and negative infinity. Positive RE and CE values indicate that the method examined has some potential for reconstruction and the result is better than simply using the mean of a given calibration/verification period as a “reconstruction”.

Final LR-based reconstruction was completed with uncertainty estimates defined as two standard errors (SE) of estimates from the corresponding regression model, approximating to 95% confidence limits. The series reconstructed were compared with other European reconstructions using Pearson correlations for the whole common period as well as with running 31-year correlations to reveal periods with significant agreement in reconstructed temperatures.

4 Results

4.1 Czech temperature reconstruction based on grape-harvest dates

Fluctuations of GHDs in the Bohemian wine-growing region during the 1499–2012 period indicate that earlier harvest dates (12 days earlier than the 1961–1990 mean) were found in 1991–2012 (Fig. 3). On a decadal scale, the earliest harvests occurred in 2000–2009 (mean, 28 September) and the latest in 1814–1823 (29 October). The earliest GHD of all was recorded in 1540 (11 September) and the absolute latest in 1919 (2 November). GHDs as early as 30 September occurred only very rarely: in the 16th century 10 times; in the 17th century 2 times; in the 18th century 5 times; in the 19th century 2 times; in the 20th and 21st centuries 11 times. GHDs later than the second half of October occurred more often: in the 16th century 29 times; in the 17th century 49 times; in the 18th century 52 times; in the 19th century 45 times; and in the 20th and 21st centuries 43 times.

The beginning of the grape harvest depends on the weather patterns of the preceding months and the closest relationship with GHDs in the 1801–2012 period appeared for mean April–August temperatures ($r^2 = 0.64$). Based on the results of the correlation analysis (Fig. 4), GHDs were calibrated to mean AMJJA Czech temperature series (Brázdil et al., 2012a, 2012b). Summaries of the calibration/verification processes for early (1811–1910) and late (1911–2010) sub-periods and for the full calibration period (1811–2010) and for LR and VS methods of reconstruction appear in Table 1 and Figs. 5–

The LR statistical measures applied confirm high reconstruction skill for GHDs in both sub-periods. The AMJJA temperatures explain 51% and 76% of GHDs variability for early and late calibration respectively. Results of the Durbin–Watson test indicate no problems with autocorrelation in residuals and standard error does not differ significantly for either of the sub-periods. Validation of these calibration results shows that RE and CE are highly positive both for early and late sub-periods and indicates that GHDs have a high potential for temperature reconstruction. Full calibration with the LR model explains 64% of common variability between GHDs and AMJJA temperatures.

The VS method, verified by the same RE and CE metrics, also confirms high reconstruction skill for GHDs. The two metrics give lower results for late verification than those from the LR method (Table 1), but they remain highly positive. Equivalent variance explained (r^2_{vs}) for VS method and the full calibration period is 0.61 which, compared with r^2 of the LR model, indicates that the scaling (variance matching) applied to GHD data involves only 6% of lost variance explained compared with LM.

Much greater differences between the two reconstruction methods become evident in comparison of the overall variability of reconstructed values with those of target data in the full calibration period. AMJJA temperature anomalies varied from -2.2°C (1919) to 2.7°C (2003) in the 1811–2010 period. The corresponding values for the LR model are -1.9°C (1919) and 2.5°C (2000) respectively and they showed that the regression reconstruction is biased towards the mean and underestimates the true variability of the target data. According to VS reconstruction, AMJJA temperature anomalies fluctuate from -2.4°C (1919) to 3.2°C (2000). Thus the range of the VS-reconstructed temperatures exceeds those measured in the common period of overlap (1811–2010).

Finally, both reconstructions were compared in terms of their ability to capture extremely low/high temperatures (Fig. 7). The same period (1811–2010) was examined and the 10% of years with the lowest (20 years) and the highest (21 years) temperatures were defined as extreme. The maxima contain one more year than the minima because two years in the former reached equally high temperatures. The measured and reconstructed temperatures were arranged in order of rank and a comparison made to establish how many reconstructed extremes corresponded to their measured equivalents (Fig. 7). Whereas the LR reconstruction captured eight extremely cold years and nine extremely warm years, the VS reconstruction proved able to reproduce 11 cold and 17 warm extremes respectively. All the figures for the two reconstructions exceed the critical thresholds for the extreme value capture test ($p < 0.05$), after McCarroll et al. (2015). However, reconstruction based on scaling always performs far better than regression.

4.2 Fluctuations in Czech April–August temperatures

Annual and multi-decadal variations in the Czech April–August temperatures since AD 1499, reconstructed by the two methods appear in Fig. 8. Whereas certain differences at the high-frequency (annual) scale follow from the methods used and are described in the previous paragraphs, both approaches provide almost identical results at decadal and multi-decadal scales. This further confirms the high potential of GHD series for temperature reconstruction and also confirms the degree of robustness of reconstruction results.

Certain irregular variations in warmer and colder periods occurred during the 1499–2012 period. Significantly warmer periods (based on unsmoothed data) were found for the years 1516–1559 and 1971–2012 (Fig. 8). The first half of the 16th century was exceptionally warm, as indicated by early grape harvests. Four cycles of particularly chilly periods, beginning around 1649, 1740, 1805 and 1913, each separated by slightly warmer intervals, are detectable in reconstruction.

5 In contrast, the coldest periods were recorded around 1820, 1840 and 1920. The warmest 30-year periods occurred in 1983–2012 (0.6°C mean) and the coldest in 1900–1929 (−0.5°C; both values based on LR reconstruction). Temperature fluctuations show great interannual and interdecadal variability and a positive trend for the instrumental part of the series from the 19th century onwards, particularly pronounced since the 1970s.

4.3 Czech temperature reconstruction in the European context

10 The mean Czech April–August temperature reconstruction may be further verified by comparison with other Czech and European temperature reconstructions, as listed in Section 2. Such comparison may be influenced by the distances between regions or areas for which the reconstructions are representative; in general, correlation coefficients decrease with increasing distance (see Fig. 5 in Dobrovolný et al., 2010). Direct comparison is also complicated by variations in seasonality, i.e. the selection of months used for averaging in individual reconstructions.

15 Any common variability in reconstructed series was investigated by running correlations (31-year window) with 15 different series (Fig. 9). A rough categorization into five groups may be made, according to the dominant types of proxy: documentary-based, grape-harvest dates, grain-harvest dates, multiproxy, and tree-rings.

For Czech territory, GHD reconstruction may be correlated with mean Czech March–June temperatures reconstructed from winter wheat-harvest dates (WWHDs) (Možný et al., 2012), giving an overall correlation of 0.52 ($p < 0.05$). The relationship between these two Czech reconstructions becomes weaker in the light of several considerable drops in running correlation coefficients around 1600, 1675, 1730, 1770, 1900 and 1980. The earliest WWHDs occurred in 2007 (4 July), 1516 (6 July), and 1521, 1535, 1539 and 1540 (7 July). Grain-harvest days in 1516 were affected by an extremely warm winter (Pejml, 1966; Brázdil et al., 2013). It is remarkable that the grain harvest in 1540 was, like the grape harvest, extremely early.

25 The reconstructed Czech April–August temperatures correlated best ($r = 0.71$) with the central European temperature series reconstructed from documentary data in Germany, Switzerland and the Czech Lands compiled by Dobrovolný et al. (2010). These relationships become weaker in the light of several considerable drops in 31-year running correlations occurring around 1750 and 1900. Similar periods of lower coherency are also evident for the summer reconstruction based on temperature indices derived from documentary data for the more distant Low Countries (van Engelen et al., 2001) and for a gridded summer reconstruction for central Europe (Luterbacher et al., 2004) which, however, employed more types of proxy than documentary evidence alone. Correlation coefficients with tree-ring based temperature reconstructions are distinctly lower; however, two of them (Wilson and Topham, 2004; Büntgen et al., 2006) represent mountain positions in the Alps.

5 Discussion

The Bohemian wine-growing area lies among the northernmost parts of the European viticulture region between the latitudes 49.9 and 50.6°N, and the quality of its product is thus significantly vulnerable to temperature variability between seasons and years. A cold growing season results in a below-mean vintage, with unripe and inferior grapes of low quality, while warmer growing seasons improve the quality of grapes considerably. In terms of minimum temperatures, spring frosts that damage developing shoots and frosts after bud-burst, reducing the season's overall yield, are among the extreme events that have detrimental effects. Winter frosts below -12°C may severely damage or even kill fully dormant vines (Kraus et al., 2005); the greater frequency of hard winters in the 18th and 19th centuries adversely affected both the revenues and profitability of viticulture in the Bohemian wine-growing region (Pejml, 1966). At the beginning of the 16th century, the Bohemian vineyards covered around 5,500 hectares. With deteriorating weather conditions, this area steadily declined to 3,300 hectares in the mid-18th century, falling to 700 hectares at the end of the 19th century, a figure that holds to the present day (Kraus et al., 2005). In the context of recent climate change (global warming), conditions for growing wine in the Bohemian area are improving, with positive effects on the quality of the wine.

The main grapevine varieties (Pinot, Traminer, Gouais, Riesling) have been cultivated in the Bohemian wine-growing region for the last six centuries (Sotolář, 2009). The Pinot varieties (Pinot noir, Pinot blanc and Pinot gris) have always been dominant in the region. In the past 30 years, the Müller Thurgau and St. Laurent varieties have also expanded. The long-term prevalence of Pinot varieties in the area more or less excludes the possible influence of changing varieties on temperature reconstruction.

Comparison of Czech April–August temperatures with other proxy-based temperature reconstructions reveals possible inconsistencies in the first part of the 16th century, as well as around 1650, 1750 and 1900 (Fig. 9). The first half of the 16th century, in response to warmer climate, saw particularly consistent early starts for the grain harvest in the Czech Lands (Možný et al., 2012). This warming allowed a northward extension of the Bohemian wine- and hop-growing regions and extensive cultivation of quite thermophilic plants, such as melons and almonds (Pejml, 1966). High summer temperatures in the Czech Lands during the first half of the 16th century are further confirmed by the results of temperature reconstructions for this century using series of temperature indices (Brázdil et al., 2013).

The Czech April–August temperature reconstruction was based on a series of continuous GHDs for 1499–2012, using the innovative statistical tool of variance scaling to optimize the capture of extreme temperatures. This reconstruction indicates extremely warm years more readily than cold ones; the percentage of warm extremes confirmed from GHDs (61%) is significantly higher compared to cold extremes (39%). This finding is interesting in the light of comparison with a number of hydroclimate reconstructions (drought, precipitation) based on dendro-climatological data (Büntgen et al., 2011; Bronisz et al., 2012; Dobrovolný et al., 2015).

The recent Czech reconstruction shows a temperature decrease in a critical period for wine production in the late 16th century (Fig. 9, A) (Brázdil et al., 2013). Starting in the mid-1580s, a number of years produced small amounts of wine, of very inferior quality. This trend also appears in Landsteiner (1999), who documents a sudden drop in wine production in central Europe. A series of bad grape yields started in 1585 in Switzerland, in 1586 in Württemberg (south-western Germany) and in 1587 in Lower Austria and western Hungary. This decline was reflected in a significant drop in revenue derived from viticulture for the Austrian state. Moreover, wine cost more at the time and tasted less sweet, leading to a shift in consumer choice from wine to beer.

GHDs in the Czech Lands around 1650 (see Fig. 3) were enormously influenced by the Thirty Years' War (1618–1648) and its subsequent hardships. The war totally devastated the Czech Lands. The population decreased by a fifth (Wilson, 2009) and some historical reports estimate population declines as catastrophic as 80% in certain regions (Balbín, 1986). Moreover, GDHs were negatively affected by an increased frequency of late spring frosts, as has been documented for the 1640s and 1660s by Brázdil et al. (2008), for example (Fig. 9, B). Temperatures decreased over the second half of the 17th century and the growing season shortened all over Europe (Hudson and Keatley, 2010). This period, corresponding to the Maunder minimum of solar activity (Eddy, 1976), is recognised as the coldest phase of the Little Ice Age (Grove, 2004; Matthews and Briffa, 2005).

The period following 1740 was also characterised by intense socio-political conflicts associated with the War of the Austrian Succession (1740–1748) and the Seven Years' War (1756–1763), with many of the key field campaigns of the period taking place on Czech territory (Fig. 9, C). During the war years, grapes were harvested at the earliest possible onset of maturity to preclude damage from enemy troops (Kilián, 2009). These periods of strife render the year-to-year variability of GDHs around 1650 and 1750 far less visible (Fig. 3). Although the socio-economic consequences and loss of human life were not as acute as they had been ~100 years earlier, the countryside took the brunt of the damage. Peasant farms were burdened with increasing taxes, direct war damage and army recruitment, while many owners simply left their farms. The non-sustainability of the situation was expressed in an unusually high number of peasant uprisings demanding reduction of service-based tenure (socage) and consequent violent suppression of all rebellions. This constantly deteriorating situation culminated in what became known as the “hunger years” of 1770–1772, the result of adverse weather patterns, very bad harvests and socio-economic problems, when the population of Bohemia fell by about 10% (Brázdil et al., 2001; Pfister and Brázdil, 2006).

Decreases in running correlations between Czech April–August temperatures and other proxy-based temperature central European reconstructions in the mid-18th century and at the end of the 19th century (slightly earlier for the tree-ring group) appear to a greater or lesser extent in all five groups of the reconstructions compared (Fig. 9, D). This indicates that there may be some problems in the quality of the GHD series for these periods. Warmer and wetter weather in August–September in the mid-18th century led to a higher incidence of fungal diseases on hops and vines, which influenced timing (early harvest) and yields (Možný et al., 2016). Effective synthetic pesticides and fungicides were not available until the early 1920s. The approach to vine growing and fermenting grapes changed in the late-19th century, affecting later harvest

dates (Kilián, 2012). Vine-growers experimented for several years with harvesting a few days later, since sunny weather in October may have helped augment sugar content.

Comparison of Czech April–August temperatures reconstructed from GHDs and Czech March–June temperatures reconstructed from WWHDs is also worthwhile (Možný et al., 2012). Possible inconsistencies in the two reconstructions based on biophysical series are disclosed for the years around 1675, 1730, 1770, 1900 and 1980 (Fig. 9). Explanations may be related to recorded winter and spring frosts, which affected the harvest of winter wheat and grapes in different ways (Pejml, 1966, 1974; Možný et al., 2016).

The earliest grape harvest recorded for the Bohemian wine-growing region during the 1499–2012 period occurred in 1540. The harvest may have been brought forward by very warm weather, but this could also have been a response to drought. Pfister and Brázdil (1999) identified the 1530s and 1550s as the warmest decades for summers in the 16th century in central Europe, and the 1530s to 1550s as the driest. In fact, 1540, with its very warm, dry weather, has been documented and described as probably the most outstanding of its kind in the past 500 years in central Europe, was documented and described based on many documentary data (Glaser et al., 1999; Pfister, 1999; Brázdil et al., 2013). Based on the temperature estimates for Switzerland from a great number of coherent qualitative documentary evidence, confirm exceptional heat; Wetter and Pfister (2013) considered the spring–summer temperatures for 1540 probably more extreme in neighbouring regions of western and central Europe than those of 2003 when between 22,000 and 35,000 heat-related deaths were recorded across Europe (e.g. Beniston, 2004; Schär and Jendritzky, 2004; Stott et al., 2004; Fischer et al., 2007). More recently, Wetter et al. (2014) employed the term “megadrought” to the 1540 weather patterns in Europe, a coinage that led to some discussion in the tree-ring (Büntgen et al., 2015) and documentary data (Pfister et al., 2015) communities.

6 Conclusions

Central Europe is a region very rich in the types of documentary evidence that facilitate climate reconstructions for the pre-instrumental period (Brázdil et al., 2005, 2010). Such reconstructions, applying standard paleoclimatological approaches (e.g. Cook et al., 1994; Dobrovolný et al., 2009), are based either on series of temperature indices (Glaser and Riemann, 2009; Dobrovolný et al., 2010; Molitor et al., 2016) or biophysical series (Meier et al., 2007; Maurer et al., 2009; Kiss et al., 2011; Wetter and Pfister, 2011; Možný et al., 2012). In this context, April–August temperature reconstruction for the Czech Lands based on GHDs in the 1499–2012 period constitutes a further important contribution to the better understanding of long-term spatio-temporal temperature variability in central Europe, as well as in the broader European context.

Advantages of the Czech temperature reconstruction include the very long overlap period (1811–2012) used for calibration/verification, a very high explained variability of 64% in the instrumental period of overlap, the consistent dominance of Pinot varieties through time and stability of vineyard management throughout the period reconstructed. On the other hand, variable density of records over the past 500 years and some social bias related to long-term development of viticulture, together with the socio-political situation in the Czech Lands over time, may partly influence the reconstruction.

In the context of discussions related to the exceedingly warm and dry year of 1540 (Wetter and Pfister, 2013; Wetter et al., 2014; Büntgen et al., 2015; Pfister et al., 2015), it is important that this new reconstruction confirms the year as the warmest April–August in 1499–2012 in the Czech Lands. Moreover, recent global warming (Stocker et al., 2013) finds a local reflection in the new Czech series, with 1971–2012 the warmest period in the past 514 years.

5

Acknowledgements

We acknowledge the CzechAdapt – System for Exchange of Information on Climate Change Impacts, Vulnerability and Adaptation Measures on the Territory of the Czech Republic project (EHP-CZ02-OV-1-014-2014) which was supported by a grant from Iceland, Liechtenstein and Norway. RB and PD acknowledge the support of the Grant Agency of the Czech

10 Republic for the project no. 13-19831S. Tony Long (Svinošice) helped work up the English.

References

Balbín, B.: Wonders and wealth of Bohemia, (Excerpt from *Miscellanea historica regni Bohemiae* by B. Balbín, 1679), Panorama, Prague, 1986.

Beniston, M.: The 2003 heat wave in Europe: A shape of things to come? An analysis based on Swiss climatological data
15 and model simulations, *Geophys. Res. Lett.*, 31, L02202, doi:10.1029/2003GL018857, 2004.

Böhm, L.: *Královské věnné město Mělník a okres Mělnický* (The Royal Endowment Town of Mělník and the Mělník District), Jelen, Mělník, 1892.

Brázdil, R., Valášek, H., Luterbacher, J., and Macková, J.: Die Hungerjahre 1770–1772 in den böhmischen Ländern. Verlauf, meteorologische Ursachen und Auswirkungen, *Österr. Z. Geschwiss.*, 12, 44–78, 2001.

20 Brázdil, R., Pfister, C., Wanner, H., von Storch, H., and Luterbacher, J.: Historical climatology in Europe – the state of the art, *Clim. Change*, 70, 363–430, doi:10.1007/s10584-005-5924-1, 2005.

Brázdil, R., Zahradníček, P., Dobrovolný, P., Kotyza, O., and Valášek, H.: Historical and recent viticulture as a source of climatological knowledge in the Czech Republic, *Geografie*, 113, 351–371, 2008.

Brázdil, R., Dobrovolný, P., Luterbacher, J., Moberg, A., Pfister, C., Wheeler, D., and Zorita, E.: European climate of the
25 past 500 years: new challenges for historical climatology, *Clim. Change*, 101, 7–40, doi:10.1007/s10584-009-9783-z, 2010.

Brázdil, R., Bělinová, M., Dobrovolný, P., Mikšovský, J., Pišoft, P., Řezníčková, L., Štěpánek, P., Valášek, H., and Zahradníček, P.: History of Weather and Climate in the Czech Lands IX: Temperature and Precipitation Fluctuations in the Czech Lands During the Instrumental Period, Masaryk University, Brno, 2012a.

Brázdil, R., Zahradníček, P., Pišoft, P., Štěpánek, P., Bělinová, M., and Dobrovolný, P.: Temperature and precipitation
30 fluctuations in the Czech Lands during the period of instrumental measurements, *Theor. Appl. Climatol.*, 110, 17–34, doi:10.1007/s00704-012-0604-3, 2012b.

- Brázdil, R., Kotyza, O., Dobrovolný, P., Řezníčková, L., and Valášek, H.: History of Weather and Climate in the Czech Lands X: Climate of the Sixteenth Century in the Czech Lands, Masaryk University, Brno, 2013.
- Bronisz, A., Biak, S., Bronisz, K., and Zasada, M.: Climate influence on radial increment of oak (*Quercus* SP.) in central Poland, *Geochronometria*, 39, 276–284, doi:10.2478/s13386-012-0011-7, 2012.
- 5 Büntgen, U., Frank, D. C., Nievergelt, D., and Esper, J.: Summer temperature variations in the European Alps, A.D. 755–2004, *J. Climate*, 19, 5605–5623, doi:http://dx.doi.org/10.1175/JCLI3917.1, 2006.
- Büntgen, U., Tegel, W., Career, M., Krusic, P. J., Hayes, M., and Esper, J.: Commentary to Wetter et al. (2014): Limited tree-ring evidence for a 1540 European ‘Megadrought’, *Clim. Change*, 131, 183–190, doi:10.1007/s10584-015-1423-1, 2015.
- 10 Büntgen, U., Tegel, W., Nicolussi, K., McCormick, M., Frank, D., Trouet, V., Kaplan, J., Herzig, F., Heussner, U., Wanner, H., Luterbacher, J., and Esper, J.: 2500 years of European climate variability and human susceptibility, *Science*, 331, 578–582, doi:10.1126/science.1197175, 2011.
- Burkhardt, T. and Hense, A.: On the reconstruction of temperature records from proxy data in Mid Europe, *Arch. Meteorol. Geophys. Bioclimatol.*, B 35, 341–359, 1985.
- 15 Chuine, I., Yiou, P., Viovy, N., Seguin, B., Daux, V., and Le Roy Ladurie, E.: Historical phenology: Grape ripening as a past climate indicator, *Nature*, 432, 289–290, doi:10.1038/432289a, 2004.
- Cook, E. R., Briffa, K. R., and Jones, P. D.: Spatial regression methods in dendroclimatology: a review and comparison of two techniques, *Int. J. Climatol.*, 14, 379–402, doi:10.1002/joc.3370140404, 1994.
- Daux, V., Garcia de Cortazar-Atauri, I., Yiou, P., Chuine, I., Garnier, E., Le Roy Ladurie, E., Mestre, O., and Tardaguila, J.:
20 An open-access database of grape harvest dates for climate research: data description and quality assessment, *Clim. Past*, 8, 1403–1418, doi:10.5194/cp-8-1403-2012, 2012.
- Dobrovolný, P., Brázdil, R., Valášek, H., Kotyza, O., Macková, J., and Halíčková, M.: A standard paleoclimatological approach to temperature reconstruction in historical climatology: an example from the Czech Republic, A.D. 1718–2007, *Int. J. Climatol.*, 29, 1478–1492, doi:10.1002/joc.1789, 2009.
- 25 Dobrovolný, P., Moberg, A., Brázdil, R., Pfister, C., Glaser, R., Wilson, R., van Engelen, A., Limanówka, D., Kiss, A., Halíčková, M., Macková, J., Riemann, D., Luterbacher, J., and Böhm, R.: Monthly and seasonal temperature reconstructions for Central Europe derived from documentary evidence and instrumental records since AD 1500, *Clim. Change*, 101, 69–107, doi:10.1007/s10584-009-9724-x, 2010.
- Dobrovolný, P., Rybníček, M., Kolář, T., Brázdil, R., Trnka, M., and Büntgen, U.: A tree-ring perspective on temporal
30 changes in the frequency and intensity of hydroclimatic extremes in the territory of the Czech Republic since 761 AD, *Clim. Past*, 11, 1453–1466, doi:10.5194/cp-11-1453-2015, 2015.
- Eddy, J. A.: The Maunder minimum, *Science*, 192, 1189–1202, 1976.
- Esper, J., Wilson, R. J. S., Frank, D. C., Moberg, A., Wanner, H., and Luterbacher, J.: Climates: past ranges and future changes, *Quat. Sci. Rev.*, 24, 2164–2166, doi:10.1016/j.quascirev.2005.07.001, 2005.

- Etien, N., Daux, V., Masson-Delmotte, V., Stievenard, M., Bernard, V., Durost, S., Guillemin, M. T., Mestre, O., and Pierre, M.: A bi-proxy reconstruction of Fontainebleau (France) growing season temperature from A.D. 1596 to 2000, *Clim. Past*, 4, 91–106, doi:10.5194/cp-4-91-2008, 2008.
- Fischer, E. M., Seneviratne, S. I., Vidale, P. L., Lüthi, D., and Schär, C.: Soil moisture-atmosphere interactions during the 5 2003 European summer heat wave, *J. Climate*, 20, 5081–5099, doi:http://dx.doi.org/10.1175/JCLI4288.1, 2007.
- Garcia de Cortazar-Atauri, I., Daux, V., Garnier, E., Yiou, P., Viovy, N., Seguin, B., Boursiquot, J. M., Parker, A., van Leeuwen, C., and Chuine, I.: An assessment of error sources when using grape harvest date for past climate reconstruction, *Holocene*, 20, 599–608, doi:10.1177/0959683609356585, 2010.
- Garnier, E., Daux, V., Yiou, P., and García de Cortázar-Atauri, I.: Grapevine harvest dates in Besançon (France) between 10 1525 and 1847: Social outcomes or climatic evidence?, *Clim. Change*, 104, 703–727, doi:10.1007/s10584-010-9810-0, 2010.
- Glaser, R. and Hagedorn, H.: The climate of lower Franconia since 1500, *Theor. Appl. Climatol.*, 43, 101–104, 1991.
- Glaser, R., Brázdil, R., Pfister, C., Dobrovolný, P., Barriendos Vallvé, M., Bokwa, A., Camuffo, D., Kotyza, O., Limanówka, D., Rácz, L., and Rodrigo, F. S.: Seasonal temperature and precipitation fluctuations in selected parts of Europe during the sixteenth century, *Clim. Change*, 43, 169–200, 1999.
- 15 Glaser, R. and Riemann, D.: A thousand year records of climate variation for Central Europe at a monthly resolution, *J. Quat. Sci.*, 24, 437–449, doi:10.1002/jqs.1302, 2009.
- Grove, J. M.: *Little Ice Age: Ancient and Modern*, Routledge, London, 2004.
- Guiot, J., Nicault, A., Rathegeber, C., Edouard, J. L., Guibal, F., and Pichard, G.: Last-millennium summer-temperature variations in western Europe based on proxy data, *Holocene*, 15, 489–500, doi:10.1191/0959683605hl819rp, 2005.
- 20 Hájková, L., Voženilek, V., Tolasz, R., Kohut, M., Možný, M., Nekovář, J., Novák, M., Reitschlager, J. D., Stríž, M., Vávra, A., and Vondráková, A.: *Atlas fenologických poměrů Česka (Atlas of Phenological Conditions in Czechia)*, Český hydrometeorologický ústav, Univerzita Palackého v Olomouci, Praha, Olomouc, 2012.
- Honzík, K.: *Weinbau der Gräflich Sylva-Tarouca-Nostitz'schen Domaine Czernosek*, Prag, 1897.
- Hudson, I. L. and Keatley, M. R. (eds.): *Phenological research. Methods for environmental and climate change analysis*, 25 Springer, Dordrecht, 2010.
- Jones, P. D., Briffa, K. R., Osborn, T. J., Lough, J. M., van Ommen, T. D., Vinther, B. M., Luterbacher, J., Wahl, E. R., Zwiers, F. W., Mann, M. E., Schmidt, G. A., Ammann, C. M., Buckley, B. M., Cobb, K. M., Esper, J., Goosse, H., Graham, N., Jansen, E., Kiefer, T., Kull, C., Küttel, M., Mosley-Thompson, E., Overpeck, J. T., Riedwyl, N., Schulz, M., Tudhope, A. W., Villalba, R., Wanner, H., Wolff, E., and Xoplaki, E.: High-resolution paleoclimatology of the last millennium: a 30 review of current status and future prospects, *Holocene*, 19, 3–49, doi:10.1177/0959683608098952, 2009.
- Jones, G. V., Duff, A., Hall, A., and Myers, J.: Spatial analysis of climate in winegrape growing regions in the Western United States, *Am. J. Enol. Vitic.*, 61, 313–326, 2010.
- Jones, G. V. and Hellman, E.: Site assessment and Oregon winegrowing regions, in: Hellman, E. (ed.), *Oregon Viticulture*, Oregon State University Press, Corvallis, Oregon, 44–50, 51–69, 2003.

- Jones, G. V., White M. A., Cooper, O. R., and Storchmann, K.: Climate change and global wine quality, *Clim. Change*, 73, 319–343, doi:10.1007/s10584-005-4704-2, 2005.
- Jones, G. V., Reid, R., and Vilks, A.: Climate, grapes, and wine: structure and suitability in a variable and changing climate, in: Dougherty, P. H. (ed.), *The Geography of Wine: Regions, Terroir and Techniques*, Springer, New York and Berlin, 109–133, 2012.
- Keller, M.: Managing grapevines to optimise fruit development in a challenging environment: a climate change primer for viticulturists, *Aus. J. Grape Wine Res.*, 16, 56–69, 2010.
- Kilián, J.: Vinařství mělnických měšťanů za třicetileté války (Viticulture of the inhabitants of Mělník during the Thirty Years War), in: Kilián, J. (ed.), *Víno a vinařství v českých zemích ve středověku a v raném novověku*, Regionální museum, Mělník, 123–131, 2009.
- Kilián, J.: Nástin vývoje mělnického vinařství v 19. a 20. století (Outline of the development of Mělník viticulture during the 19th and 20th centuries), in: Babíková, P. (ed.), *Víno a vinařství v českých zemích po roce 1800*, Regionální museum, Mělník, 44–53, 2012.
- Kiss, A., Wilson, R., and Bariska, I.: An experimental 392-year documentary-based multi-proxy (vine and grain) reconstruction of May–July temperatures for Kőszeg, West-Hungary, *Int. J. Biometeorol.*, 55, 595–611, doi:10.1007/s00484-010-0367-4, 2011.
- Kraus, V., Foffová, Z., and Wurm, B.: *Nová encyklopedie českého a moravského vína* (New Encyclopaedia of Bohemian and Moravian Wine), Praga Mystica, Praha, 2005.
- Krieger, M., Lohmann, G., and Laepple, T.: Seasonal climate impacts on the grape harvest date in Burgundy (France), *Clim. Past*, 7, 425–435, doi:10.5194/cp-7-425-2011, 2011.
- Landsteiner, E.: The crisis of wine production in late sixteenth-century Central Europe: Climatic causes and economic consequences, *Clim. Change*, 43, 323–334, doi:10.1007/978-94-015-9259-8_12, 1999.
- Le Roy Ladurie, E. and Baulant, M.: Grape harvests from the fifteenth through the nineteenth centuries, *J. Interdiscip. Hist.*, 10, 839–849, 1980.
- Le Roy Ladurie, E.: Canicules, fraîcheurs, vendanges (France 15ème-19ème siècles), *C. R. Biologies*, 328, 213–218, 2005.
- Luterbacher, J., Dietrich, D., Xoplaki, E., Grosjean, M., and Wanner, H.: European seasonal and annual temperature variability, trends and extremes since 1500, *Science*, 303, 1499–1503, doi:10.1126/science.1093877, 2004.
- Luterbacher, J., Werner, J., Smerdon, J., Fernandez-Dondo, L., Gonzalez-Rouco, J.F., Barriopedro, D., Ljungqvist, F.C., Büntgen, U., Zorita, E., Wagner, S., Esper, J., McCarroll, D., Toreti, A., Frank, D.C., Jungclauss, J.H., Barriendos, M., Bertolin, C., Bothe, O., Brázdil, R., Camuffo, D., Dobrovolný, P., Gagen, M., García-Bustamante, E., Ge, Q., Gomez-Navarro, J.J., Guiot, J., Hao, Z., Hegerl, G.C., Holmgren, K., Klimentko, V.V., Martín-Chivelet, J., Pfister, C., Roberts, N., Schindler, A., Schurer, A., Solomina, O., von Gunten, L., Wahl, E.R., Wanner, H., Wetter, O., Xoplaki, E., Yuan, N., Zanchettin, D., Zhang, H., Zerefos, C.: European summer temperatures since Roman times. *Environ Res Lett* 11(2):1–12, 2016.

- Mariani, L., Parisi, S., Cola, F. O., Zoia, G., and Bonardi, L.: Tirani (1624–1930): a long time series of harvest dates for grapevine, *Ital. J. Agrometeorol.*, 1, 7–16, 2009.
- Matthews, J. A. and Briffa, K. R.: The ‘Little Ice Age’: re-evaluation of an evolving concept, *Geogr. Ann.*, 87A, 17–36, doi:10.1111/j.0435-3676.2005.00242.x, 2005.
- 5 Maurer, C., Koch, E., Hammerl, C., Hammerl, T., and Pokorny, E.: BACCHUS temperature reconstruction for the period 16th to 18th centuries from Viennese and Klosterneuburg grape harvest dates, *J. Geophys. Res.*, 114, D22106, doi:10.1029/2009JD011730, 2009.
- McCarroll, D., Young, G., and Loader, N.: Measuring the skill of variance-scaled climate reconstructions and a test for the capture of extremes, *Holocene*, 25, 618–626, doi:10.1177/0959683614565956, 2015.
- 10 Meier, N., Rutishauser, T., Pfister, C., Wanner, H., and Luterbacher, J.: Grape harvest dates as a proxy for Swiss April to August temperature reconstructions back to AD 1480, *Geophys. Res. Lett.*, 34, L20705, doi:10.1029/2007GL031381, 2007.
- Menzel, A.: A 500 year pheno-climatological view on the 2003 heatwave in Europe assessed by grape harvest dates, *Meteorol. Z.*, 14, 75–77, doi:10.1127/0941-2948/2005/0014-0075, 2005.
- Molitor, D., Udelhoven, T., Ney, S., Hoffmann, L., and Pfister, L.: Historical vintage descriptions from Luxembourg – an indicator for the climatic conditions in the past?, *Vitis*, 55, 23–30, doi:10.5073/vitis.2016.55.23-30, 2016.
- 15 Montgomery, D. C., Peck, E. A., and Vinning, G. G.: *Introduction to Linear Regression Analysis*, John Wiley & Sons, New York, 2012.
- Možný, M., Brázdil, R., Dobrovolný, P., and Trnka, M.: Cereal harvest dates in the Czech Republic between 1501 and 2008 as a proxy for March–June temperature reconstruction, *Clim. Change*, 110, 801–821, doi:10.1007/s10584-011-0075-z, 2012.
- 20 Možný, M., Hájková, L., Vráblík, T., Novák, J., Reitschläger, J., and Bareš, D.: *Počasí a výnosy zemědělských plodin v České republice (Weather and Yields of Agricultural Crops in the Czech Republic)*, Sborník prací ČHMÚ, Praha, 2016.
- Pfister, C.: Die Fluktuationen der Weinmosterträge im schweizerischen Weinland vom 16. bis ins frühe 19. Jahrhundert: klimatische Ursachen und sozioökonomische Bedeutung, *Schweizerische Z. Gesch.*, 31, 445–491, 1981.
- Pfister, C.: *Klimageschichte der Schweiz 1525–1860, Das Klima der Schweiz von 1525–1860 und seine Bedeutung in der Geschichte von Bevölkerung und Landwirtschaft*, Bd. 1, Paul Haupt, Bern, Stuttgart, 1984.
- 25 Pfister, C.: *Wetternachhersage: 500 Jahre Klimavariationen und Naturkatastrophen*, Paul Haupt, Bern, 1999.
- Pfister, C. and Brázdil, R.: Climatic variability in sixteenth-century Europe and its social dimension: a synthesis, *Clim. Change*, 43, 5–53, doi:10.1023/A:1005585931899, 1999.
- Pfister, C. and Brázdil, R.: Social vulnerability to climate in the “Little Ice Age”: an example from Central Europe in the early 1770s, *Clim. Past*, 2, 115–129, doi:10.5194/cp-2-115-2006, 2006.
- 30 Pfister, C., Wetter, O., Brázdil, R., Dobrovolný, P., Glaser, R., Luterbacher, J., Seneviratne, S. I., Zorita, E., Alcoforado, M. J., Barriendos, M., Bieber, U., Burmeister, K. H., Camenisch, C., Contino, A., Grünewald, U., Herget, J., Himmelsbach, I., Labbé, T., Limanówka, D., Lützenburger, L., Kiss, A., Kotyza, O., Nordli, Ø., Pribyl, K., Retsö, D., Riemann, D., Rohr, C.,

- Siegfried, W., Spring, J.-L., Söderberg, J., Wagner, S., and Werner, J. P.: Tree-rings and people – different views on the 1540 Megadrought. Reply to Büntgen et al. 2015, *Clim. Change*, 131, 191–198, doi:10.1007/s10584-015-1429-8, 2015.
- Pejml, K.: Příspěvek ke kolísání klimatu v severočeské vinařské a chmelařské oblasti od r. 1500–1900 (A Contribution to Climate Fluctuations in the North Bohemian Wine- and Hop-growing Region in 1500–1900), Český hydrometeorologický ústav, Praha, 1966.
- Pejml, K.: Příspěvek ke znalosti kolísání klimatu v Čechách v 16. až 18. stol. (A contribution to knowledge of climate fluctuations in Bohemia from the 16th to the 18th centuries), *Meteorol. Zpr.*, 27, 90–95, 1974.
- Schams, F.: Vollständige Beschreibung sämtlicher berühmten Weingebirge in Oesterreich, Mähren und Böhmen in statistisch-topographisch-natur-historischer und ökonomischer Hinsicht, 1835.
- Schär, C. and Jendritzky, G.: Hot news from summer 2003, *Nature*, 432, 559–560, doi:10.1038/432559a, 2004.
- Smetana, J.: Nejstarší kronikářské záznamy litoměřických radních písařů (The earliest chronicle records of scribes to the Litoměřice councillors), *Litoměřicko*, 14, 119–142, 1978.
- Sotolář, R.: Historické odrůdy révy na našem území (The historical varieties of grapevine in the Czech Lands), in: Kilián, J. (ed.), *Víno a vinařství v českých zemích ve středověku a v raném novověku*, Regionální muzeum, Mělník, 16–23, 2009.
- Stocker, T. F., Qin, D., Plattner, G.-K., Tignor, M. M. B., Allen, S. K., Boschung, J., Nauels, A., Xia, Y., Bex, V., and Midgley, P. M. (eds.): *Climate Change 2013: The Physical Science Basis*, Working Group I Contribution to the Fifth Assessment Report of the Intergovernmental Panel on Climate Change, Cambridge University Press, Cambridge, UK, 2013.
- Stott, P. A., Stone, D. A., and Allen, M. R.: Human contribution to the European heatwave of 2003, *Nature*, 432, 610–614, doi:10.1038/nature03089, 2004.
- Strömmer, E.: *Klima-Geschichte. Methoden der Rekonstruktion und historische Perspektive. Ostösterreich 1700 bis 1830*, Franz Deuticke, Wien, 2003.
- Svitáková, Z., Kott, I., and Nekovář, J.: Fenologická data za posledních 150 let (Phenological data for the recent 150-year period), in: *Bioclimatology present and future*, Křtiny, 12–14 September 2005, 2005.
- Šimáček, J.: *Vinařství v království českém: spis jednající o počátcích, rozvoji a nynějším stavu vinařství / Der Weinbau im Königreiche Böhmen: Schilderung der Anfänge, der Entwicklung und des gegenwärtigen Standes des Weinbaues*, A. Reinwart, Praha, 1891.
- Tolasz, R., Míková, T., Valeriánová, A., and Voženílek, V. (eds.): *Climate Atlas of Czechia*, Czech Hydrometeorological Institute and Palacký University, Prague, Olomouc, 2007.
- Trachsel, M., Kamenik, C., Grosjean, M., McCarroll, D., Moberg, A., Brázdil, R., Büntgen, U., Dobrovolný, P., Esper, J., Frank, D. C., Friedrich, M., Glaser, R., Larocque-Tobler, I., Nicolussi, K., and Riemann, D.: Multi-archive summer temperature reconstruction for the European Alps, AD 1053–1996, *Quat. Sci. Rev.*, 46, 66–79, doi:10.1016/j.quascirev.2012.04.021, 2012.

van Engelen, A. F. V., Buisman, J., and Ijnsen, F.: A millennium of weather, winds and water in the Low Countries, in: Jones, P. D., Ogilvie, A. E. J, Davies, T. D., and Briffa, K. R. (eds.): History and Climate: Memories of the Future? Kluwer Academic / Plenum Publishers, New York, Boston, Dordrecht, London, Moscow, 101–124, 2001.

Wetter, O. and Pfister, C.: Spring–summer temperatures reconstructed for northern Switzerland and southwestern Germany from winter rye harvest dates, 1454–1970, *Clim. Past*, 7, 1307–1326, doi:10.5194/cp-7-1307-2011, 2011.

Wetter, O. and Pfister, C.: An underestimated record breaking event – why summer 1540 was likely warmer than 2003, *Clim. Past*, 9, 41–56, doi:10.5194/cp-9-41-2013, 2013.

Wetter, O., Pfister, C., Werner, J. P., Zorita, E., Wagner, S., Seneviratne, S. I., Herget, J., Grünewald, U., Luterbacher, J., Alcoforado, M. J., Barriendos, M., Bieber, U., Brázdil, R., Burmeister, K. H., Camenisch, C., Contino, A., Dobrovolný, P., Glaser, R., Himmelsbach, I., Kiss, A., Kotyza, O., Labbé, T., Limanówka, D., Litzenburger, L., Nordli, Ø., Pribyl, K., Retsö, D., Riemann, D., Rohr, C., Siegfried, W., Söderberg, J., and Spring, J.-L.: The year-long unprecedented European heat and drought of 1540 – a worst case, *Clim. Change*, 125, 349–363, doi:10.1007/s10584-014-1184-2, 2014.

Wilson, P. H.: The Thirty Years War: Europe’s Tragedy, Harvard University Press, Harvard, 2009.

Wilson, R. and Topham, J.: Violins and climate, *Theor. Appl. Climatol.*, 77, 9–24, doi:10.1007/s00704-003-0025-4, 2004.

Table 1: Summary of calibration and verification statistics used for April–August temperature reconstruction based on grape-harvest dates for the Czech Lands: r^2 – explained variance, SE – standard error of estimate, DW – Durbin-Watson test, RE – reduction of error, CE – coefficient of efficiency; RE and CE were calculated for linear regression (LR) and variance scaling (VS).

<i>Subperiods</i>	<i>Calibration statistics</i>			<i>Verification statistics</i>				
	r^2	SE	DW	r^2	RE_{LR}	CE_{LR}	RE_{VS}	CE_{VS}
Early calibration (1811–1910)/ late verification (1911–2010)	0.51	0.52	1.9	0.76	0.66	0.53	0.71	0.60
Early verification (1811–1910)/ late calibration (1911–2010)	0.76	0.47	1.8	0.51	0.51	0.21	0.50	0.19
Full calibration (1811–2010)	0.64	0.54	1.9	0.64	–	–	–	–

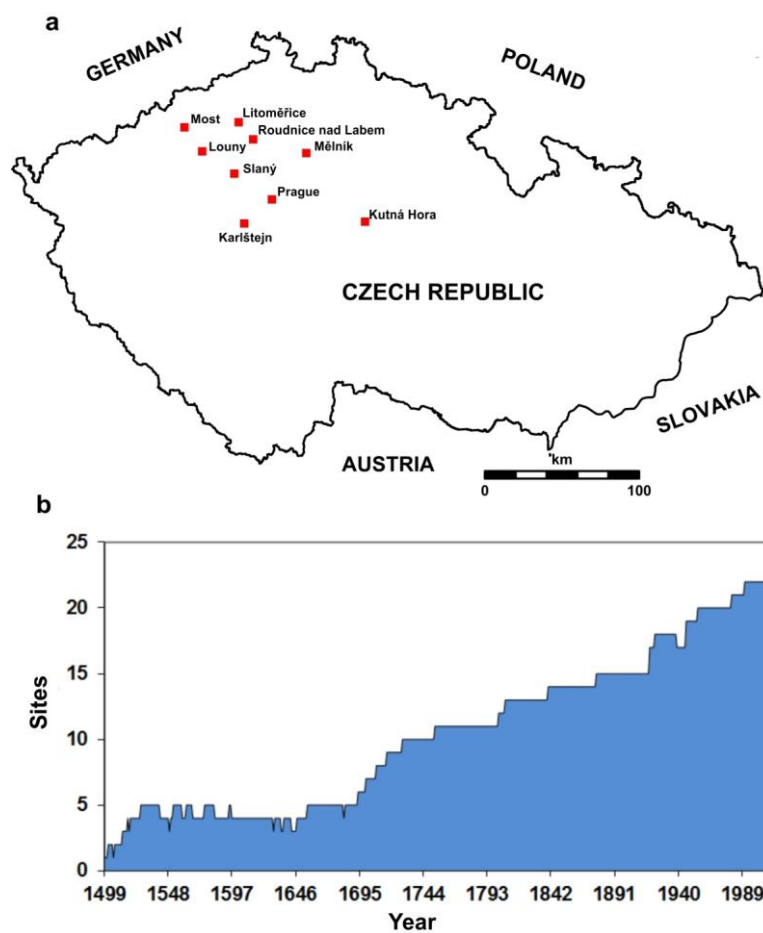


Figure 2: a) Map of the Bohemian wine-growing region, b) the number of sites of grape harvest observations per year for the 1499–2012 period in individual years.



Figure 2: a) Oil painting of St. Wenceslas in a vineyard, 18th century; b) flag of the guild of wine-cultivators, 1762; c) insignia of the guild of wine-cultivators, 1676 (from the collections of the Mělník Regional Museum; photo M. Možný).

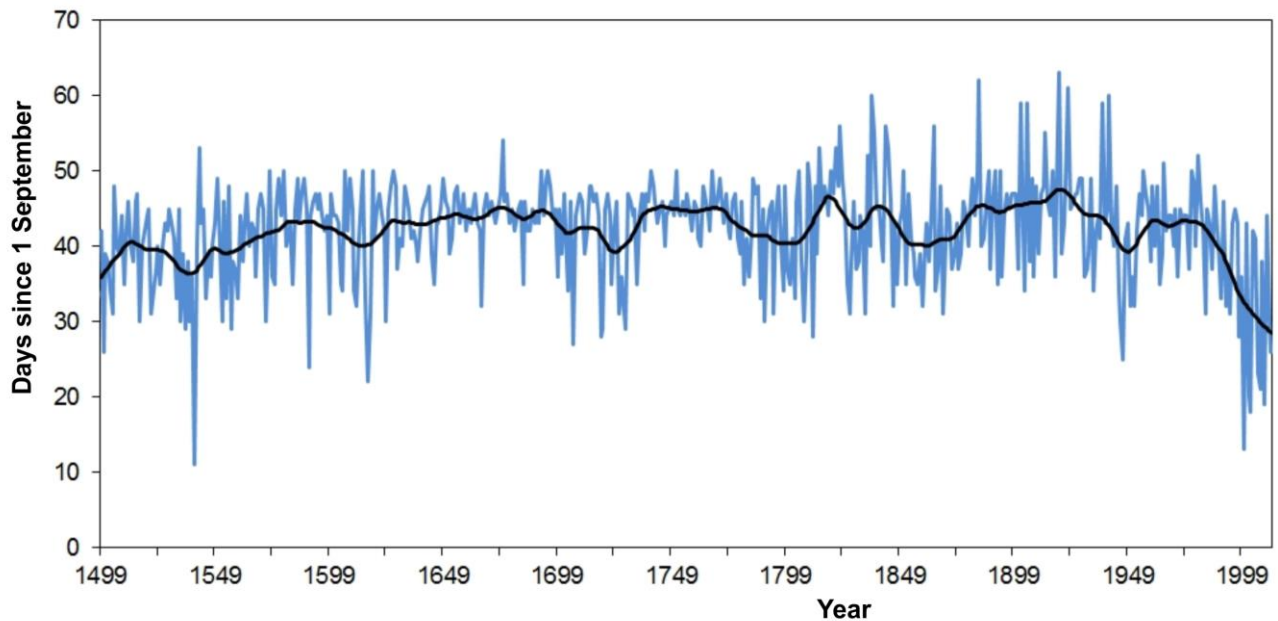


Figure 3: Fluctuations in median grape-harvest days (in days after 1 September) for the Bohemian wine-growing region in the 1499–2012 period. Smoothed by Gaussian filter over 30 years.

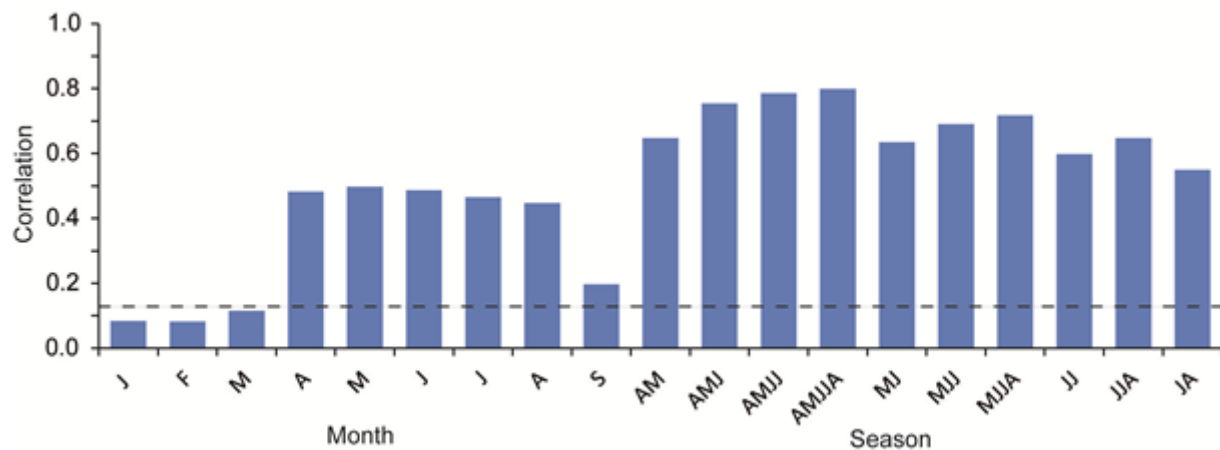


Figure 4: Pearson correlation coefficients between grape-harvest dates and Czech temperatures in the 1811–2010 period for months and seasons; broken horizontal line indicates significant correlations for one-tail test ($p = 0.05$, $N = 200$).

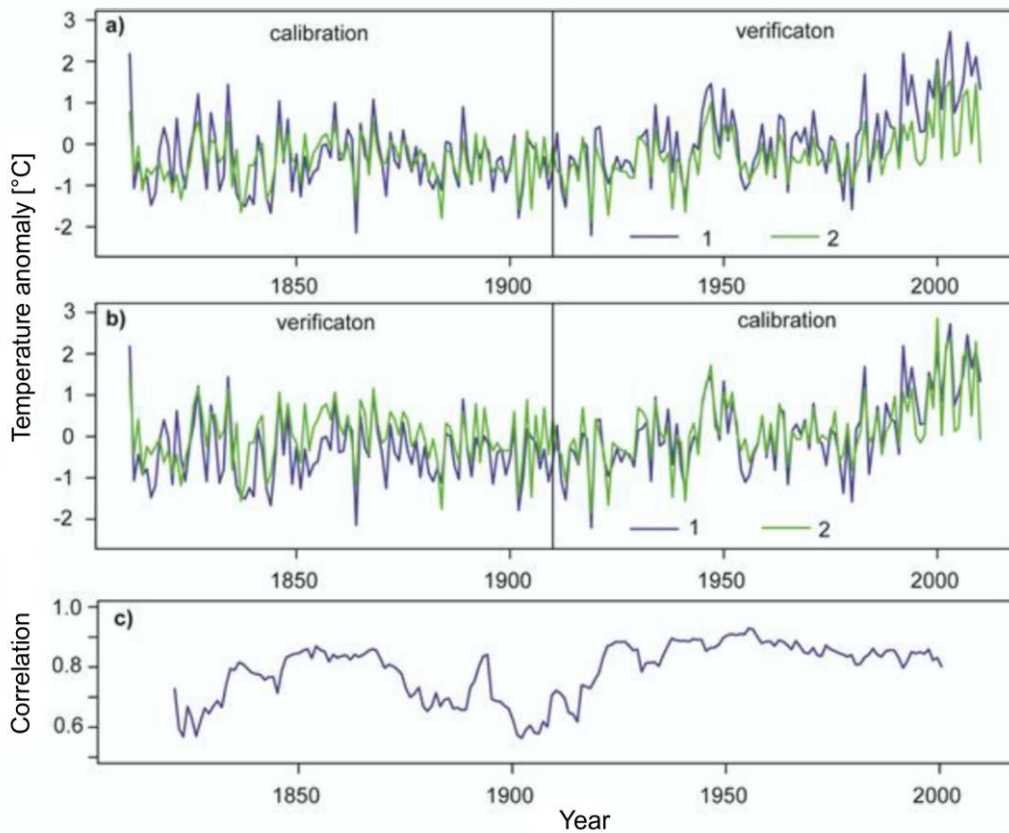


Figure 5: Comparison of measured (1) and reconstructed (2) mean Czech April–August temperatures: anomalies with respect to the 1961–1990 period. *Linear regression method* of reconstruction was performed for a) early (1811–1910) and b) late (1911–2010) calibration periods; c) running correlations (window 21 years) between mean Czech April–August temperatures and grape-harvest dates during the 1811–2010 period.

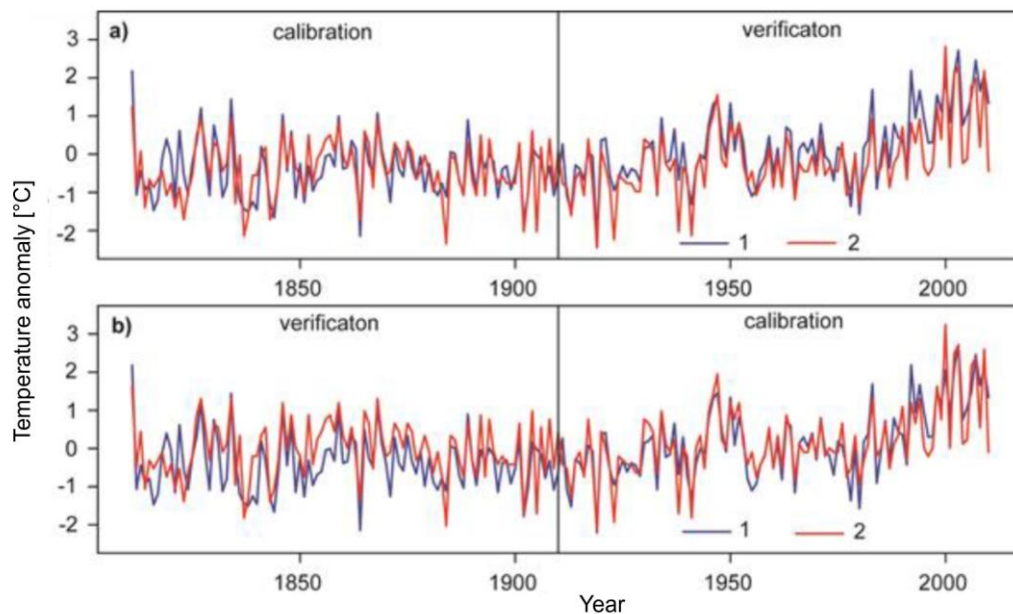


Figure 6: Comparison of measured (1) and reconstructed (2) mean Czech April–August temperatures: anomalies with respect to the 1961–1990 period. *Variance scaling method* of reconstruction was performed for a) early (1811–1910) and b) late (1911–2010) calibration periods.

5

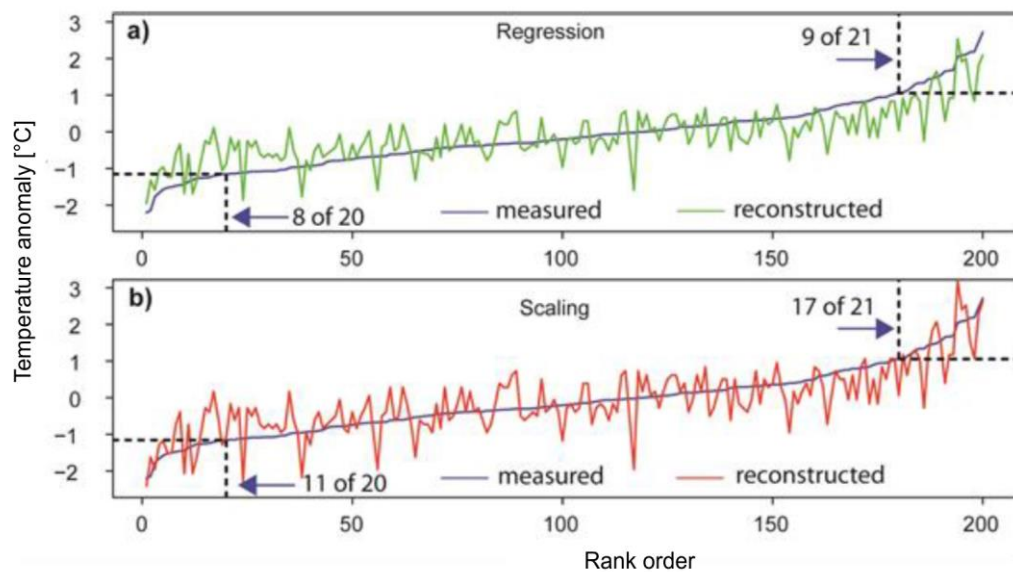


Figure 7: Comparison of measured (continuous blue line) and reconstructed temperatures using regression (a – green line) and scaling (b – red line) presented in rank order; dashed boxes indicate the upper and lower 10% portions of measured temperatures and numbers of these extremes reproduced in reconstructions.

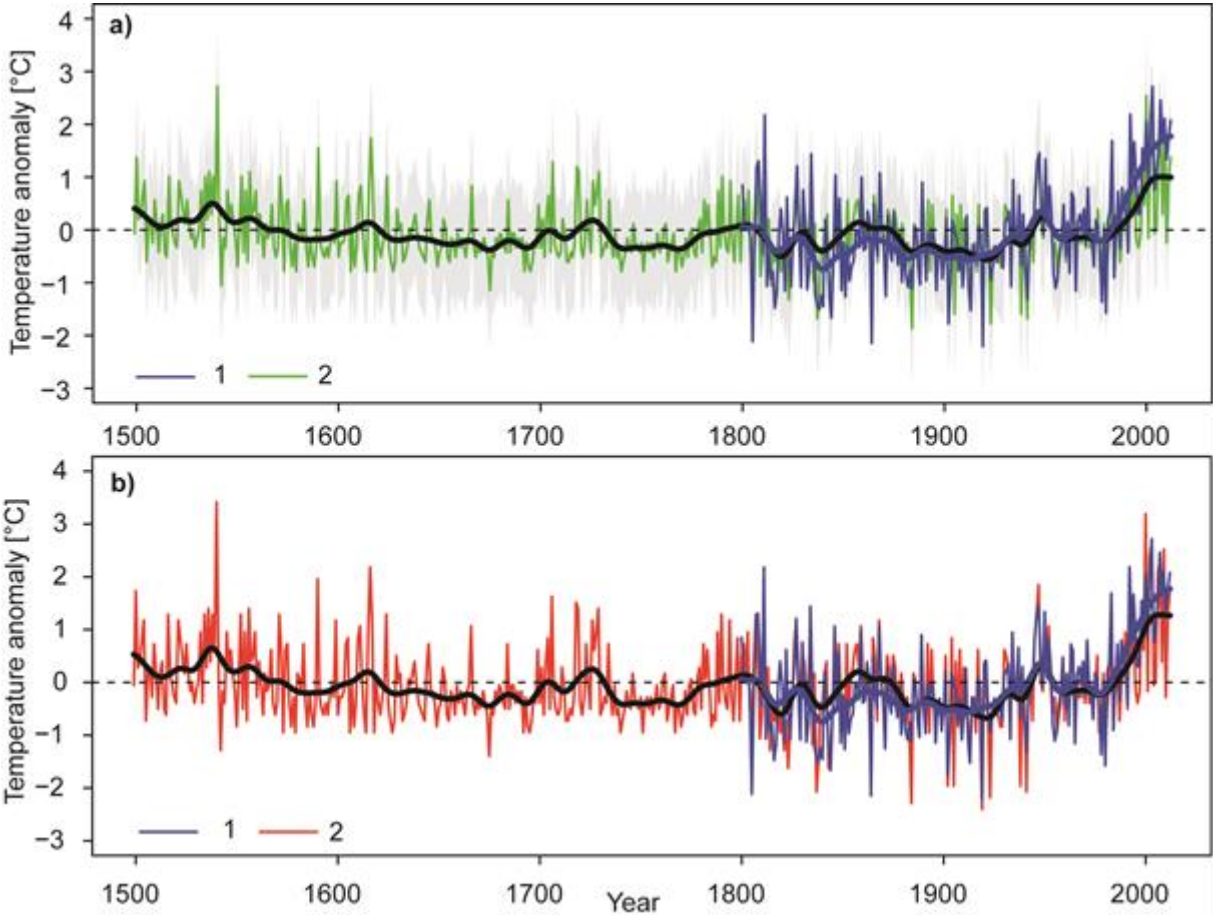


Figure 8: Measured (1) and reconstructed (2) mean Czech April–August temperatures in the 1499–2012 period using linear regression (a) and variance scaling (b); temperatures indicate anomalies with respect to the 1961–1990 period. Thick blue and black lines represent measured and reconstructed temperatures smoothed by Gaussian filter for 30 years; grey area approximates 95% confidence interval constructed as two units of standard error (SE) of the estimate from the linear regression.

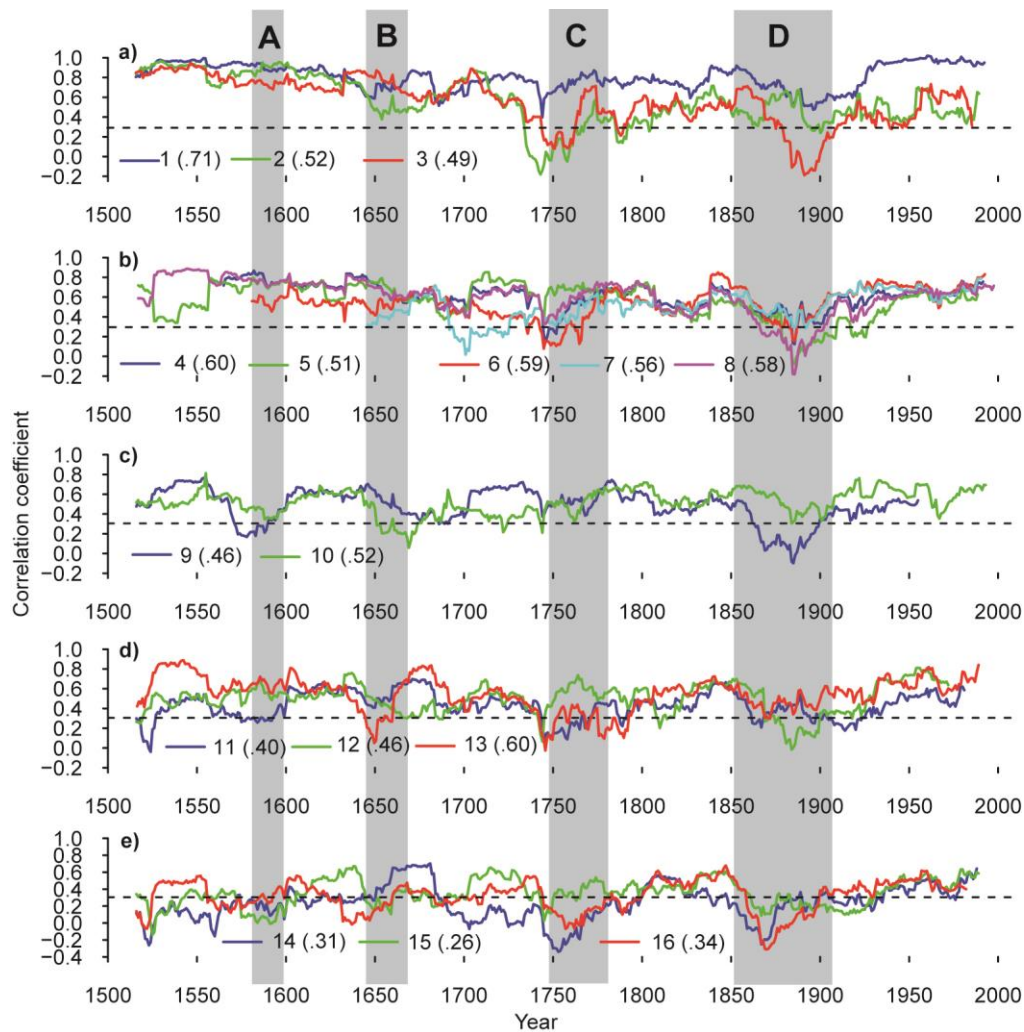


Figure 9: Running 31-year correlation coefficients between GHD-based reconstructed Czech AMJJA temperatures and selected European proxy reconstructions: (a) documentary: (1) AMJJA Central Europe (Dobrovolný et al., 2010); (2) JJA central Europe (Luterbacher et al., 2004); (3) summer Low Countries (van Engelen et al., 2001); (b) grape-harvest dates: (4) AMJJA Swiss Plateau (Meier et al., 2007); (5) AMJJA Burgundy (Chuine et al., 2004); (6) MJJ Vienna and Klosterneuburg region (Maurer et al., 2009); (7) MJJ Közseg, Hungary (Kiss et al., 2011); (8) AMJJ Switzerland (Wetter and Pfister, 2013); (c) grain-harvest dates: (9) MAMJJ northern Switzerland and south-western Germany (Wetter and Pfister, 2011); (10) MAMJJ Czech Lands (Možný et al., 2012); (d) multiproxies: (11) JJA European Alps (Trachsel et al., 2012); (12) AMJJAS western Europe (Guiot et al., 2005); (13) JJA Europe (Luterbacher et al., 2016); (e) tree rings: (14) JJA western and central Europe (Büntgen et al., 2011); (15) JJAS Alps (Büntgen et al., 2006); (16) JJ central-eastern Alps (Wilson and Topham, 2004). Numbers in brackets are overall correlations for the common period in question and broken horizontal lines represent critical values of correlation coefficient for $\alpha = 0.05$ for one-tailed t-test. Vertical columns A–D identify periods in which GHDs might have been influenced by the social and political processes discussed in the text: A – series of bad grape yields, B – the Thirty Years’ War, C – the War of the Austrian Succession and the Seven Years’ War, D – series of bad grape yields.