

**Revision notes no. 2 for cp-2016-137**2017.07.10

---

Editors and Reviewers notes are indicated in black in this note.

Authors comments are in blue. All changes made in the manuscript are also in blue (we added in the comment sections some specific response to RC1, RC2, SL, and EC)

RC1 and RC2: Reviewer #1 and #2, respectively

SL: Sebastian Luening

EC: Editor's comments/Editor

---

We would like to note that the manuscript has been thoroughly revised (major revision), and thus some comments/suggestions of changes by RC are no longer applicable (in fact, several sentences were removed). However, we tried our best to refer Editors and Reviewers to sections that correspond to the requested changes.

*Although we indicated specific lines to address the comments, we kindly invite editor and reviewers to read the manuscript and its accompanying supplementary documents anew. Thank you for considering this manuscript.*

---

**Major changes:**

- 1) After fully revising the submitted manuscript, its title has been updated to: *“Three distinct Holocene intervals of stalagmite deposition and non-deposition revealed in NW Madagascar, and their paleoclimate inferences”*
- 2) The abstract has been fully revised to reflect the changes made to the manuscript
- 3) Many figures were removed and updated to address major comments from RC1, RC2, and EC.
- 4) Here is a list of major changes in response to RC1, RC2, EC (detailed responses are given further below):
  - a. Radiometric dating (please see lines 180–198 and lines 256–284)
  - b. Stable isotopes (please see lines 221–253 and 287–309), also please see Figs 5–6 and their corresponding supplementary Figures S6–S8.

- c. Most of the figures have been fully revised as indicated in the Author's Responses to Reviewers and Editor
- d. Some subsections have been added to clarify ideas (e.g., Sect. 3. Methods, now with three distinct subsections)
- e. Interpretation of the three intervals of the Holocene in Madagascar has been revised (Sect. 5.2. Lines 398–524)
- f. The section 5.3. on the ITCZ implications has been shortened (Lines 505–524) in response to RC2
- g. New sections have been added, and they are:
  - i. Sect. 2.1. Stalagmites and their setting (lines 76–98): this section was moved as suggested by RC1
  - ii. Sect. 2.3. Climate of Madagascar: new and inserted in response to RC2
  - iii. Sect. 5.4. Regional comparison, added in response to RC2
  - iv. Sect. 5.6. Beyond the ITCZ: IOD and ENSO influence on Madagascar's climate (Lines 576–605), added in response to RC2
- h. Several changes have been made to the Supplementary materials (in fact we added several figures and texts)

---

### **Specific responses to Reviewers and Editors**

#### **Editor:**

In addition to responding to the reviewer comments I would also ask that you pay particular attention to:

\*detailing the mineralogical assignment of the speleothems and how this leads to the isotopic correction along the length of the samples. In particular it is unclear how each isotopic sample is corrected for its aragonite:calcite composition when only a small number of discrete XRD analyses have been completed.

- Please see specifically Lines 228–229 and 239–240
- Also, please see Lines 200–241

- (The excel file with the data were color coded to account for the difference in mineralogy, and thus to ease mathematical correction for stable isotopes). Those data will be made available publicly and submitted to NOAA upon acceptance of this manuscript.
- Additional explanation: we run a total of 15 XRD samples to identify the nature of mineralogy with similar fabrics. For the isotopic correction, the mineralogy at the crest was mostly monomineralic, but we specified the correction at lines 239–240. (If this is very confusing, I am happy to discuss this via skype if necessary).

\*detailing the U-series and age model details. In particular more detail needs to be given on initial  $^{230}\text{Th}/^{232}\text{Th}$  values and the effect that the chosen values have on bringing U-series ages into stratigraphic alignment. Age information also needs to be included on plots showing the isotopic time-series so that readers can evaluate how much “movement” of the records is possible based on age uncertainty.

- Please see Lines 180–198 and Lines 256–277
- Age information: please see Figs. 5–6

\*be careful with “wiggle matching”. The examples in the proposed revised figures are not convincing to me. Please be careful in how you approach this and in how robust your climatic interpretations are.

- We removed all wiggle matching to avoid biases in interpretation.

\*more thoroughly compare your data with other records from the region (not just a map of the locations of other sites). The Scroxton et al 2017 QSR paper that also presents speleothem data from Madagascar should also be included in the revised interpretation of your records.

- Done, please see Figure 11 (also see Sect. 5.4 at Lines 527–574)
- For Scroxton et al. (2017), please see Lines 127 and 579–580

**Anonymous Referee #1 (RC1):**

*Received and published: 18 January 2017*

This study focuses on speleothems from two caves in Madagascar. Several types of analysis are performed including stable isotopes, laminae, and mineralogy, each of which is anchored using U-Th dates.

- We added a paragraph to indicate that we used Layer-Specific Width (LSW) and not laminae. Please see lines 211–218.

The age models appear robust (although an adequate discussion of age determinations and age model calculations is lacking) but there are several problems.

- please see lines 180–198 and lines 256–284

First, the time slices spanned by these stalagmites are quite short, being punctuated by long hiatuses. As a result, the larger context of this record is difficult to identify.

- To specifically address this, please see Lines 278–284
- We also revised the interpretation of the three intervals of the Holocene (Lines 398–524)

Second, I am not convinced of the corrections for differential fractionation between calcite and aragonite  $\delta^{13}\text{C}$  values. And associated with this is my concern that there may be microscopically intermingled aragonite and calcite that can only be corrected for isotopically using quantitative XRD, something that was not done here.

- Please see specifically Lines 228–229 and 239–240
- Also, please see Lines 200–241
- Figures S9–S11
- (The excel file with the data were color coded to account for the difference in mineralogy, and thus to ease mathematical correction for stable isotopes). Those data will be made available publicly and will submitted to NOAA upon acceptance of this manuscript.

Third, replication among samples of the same age is not particularly convincing, raising questions about the controls on isotopic values.

- Please see Lines 301–309

Fourth, several claims are poorly substantiated, incompletely referenced, or (to some degree or another) unsupported by the data.

- The manuscript has been fully revised

Fifth, the writing is at times hard to follow.

- We did our best to carefully revise the manuscript. We incorporated requested changes in the specific comments by RC1 below. We also incorporated changes according to RC2's comment (e.g. narrowing discussion of the ITCZ and inserting discussion on other climate forcings, like IOD). Please see our responses to specific comments and please see our response to RC2.

1. Does the paper address relevant scientific questions within the scope of CP? Yes

2. Does the paper present novel concepts, ideas, tools, or data? No

- Please see Authors' responses

3. Are substantial conclusions reached? No

- Please see Authors' responses

4. Are the scientific methods and assumptions valid and clearly outlined? No

- Please see Sect. 3 Methods (with three new subsections to make this clearer) at lines 179–253

5. Are the results sufficient to support the interpretations and conclusions? No

- Please see Authors' responses

6. Is the description of experiments and calculations sufficiently complete and precise to allow their reproduction by fellow scientists (traceability of results)?

7. Do the authors give proper credit to related work and clearly indicate their own new/original contribution? Not always 8. Does the title clearly reflect the contents of the paper? No

- Please see Authors' responses

9. Does the abstract provide a concise and complete summary?

10. Is the overall presentation well structured and clear? No

- Please see Authors' responses

11. Is the language fluent and precise? No

- Please see Authors' responses

12. Are mathematical formulae, symbols, abbreviations, and units correctly defined and used?

13. Should any parts of the paper (text, formulae, figures, tables) be clarified, reduced, combined, or eliminated?

14. Are the number and quality of references appropriate?

15. Is the amount and quality of supplementary material appropriate?

Specific comments follow:

-----  
The comments below no. 18–40 belong to the Abstract. We fully revised the Abstract to account for the changes made in the manuscript, thus responses to specific comments no. 18–40 become N/A.

18 – is this one cave or two?

23 – why no dates associated with the middle Holocene?

27 – when?

27 - “globally colder” is a little confusing; the interhemispheric temperature gradient is responsible for determining mean global ITCZ position.

30 – when?

33 – is “exemplified” the correct word here?

37 – here is the missing mention of hemispheric temp gradient. I suggest making this explicit earlier in the abstract.

39-40 – delete this sentence

---

43 – delete “the”

- deleted

49 – delete “the”

- deleted

51 – reword as “a particularly”

- sentence revised (Lines 58–59)

52 – ITCZ was previously defined

- In the previous version of the manuscript, the ITCZ was defined in the abstract. In the revised manuscript, we defined the first acronym at the beginning in the introduction, and used the ITCZ acronym for the remainder of the text. (Lines 56–57)

61 – reword “variability of growth-specific width” as “growth laminae”

- We already explained this above (LSW)

61 - do not capitalize “cave”

- corrected

90 – wasn’t replication already discussed on line 42

- Section revised (Lines 101–117), repeated ideas/texts were removed.

100 – “long-term” is vague; records of what?

- Please see lines 173–176

101 – “longer” vague (see previous comment)

- see our response to line 100 (above)

112 – “chronologies were”

- Corrected (Lines 193)

133 – I am not sure that the correction for carbon isotopic fractionation between calcite and aragonite in speleothems has been adequately explored. As a result, I am uncertain if this part of the results will hold up.

- Please see Sect. 3.3. (Lines 220–241)

142 – looking at the data table in Supp Materials, it appears that ANJB-2 (sometimes labeled as ANJ-B-2) has a wide range in U abundance. So why the s.d. of 0? 144 – Providing this level of U and Th abundance data is not particularly useful. I would simply refer the reader to the relevant data table. What is missing that should be included here is a discussion of 238/232 ratios in each sample, what 232/232 value was used to correct for inherited 230 (and how this value was derived), and how well the ages fall in correct stratigraphic order. Most ages look quite good but some late Holocene dates have larger errors. These deserve some discussion.

- Considered, please see lines 257–277
- The labels were also corrected (thank you!)

148 – The wording here is confusing. Why argue for some continuous growth intervals but define others as separated by hiatuses?

- This section was revised, please see lines 278–284

154 – these are enormous ranges in  $\delta^{18}\text{O}$  and  $\delta^{13}\text{C}$ . 161 – drop the hundredths place in the stable isotope values (where they are included). It complicates the paper but doesn't have any relevance for interpretation.

- Considered, please see lines 287–293 and 294–300 (we also revised these paragraphs)

205 – this basic introduction should be presented much earlier in the paper if readers who require it are going to glean any meaningful information from the stable isotope results.

- Done, and moved to Sect. 2.1 (Lines 76–98)

272 – relative to what time interval?

- Relative to modern climate (Lines 402)

276 – I guess, but the record spans so little time that it's hard to get a clear sense of how anomalous this 8.2 isotopic excursion actually is.

- Instead of arguing that this is anomalous, and to avoid over-interpretation of the data, we revised the sentence (please see Lines 406–407) and its corresponding figure 12.



278 – “suggest”? The mineralogical composition should be defined precisely (even down to percent calcite or aragonite). Or do you mean to suggest that it may have originally been aragonite but was altered to calcite?

- Please see lines 406–416

291 – missing a chance to fit this finding into a large context. What other regional records (African, south Asian) record the 8.2 event and what is the nature of these records?

- We dedicated an updated section on the 8.2 ka (Lines 549–574)

295-297 – I don’t understand this sentence. Is this saying what you mean it to say?

- We deleted as we revised the manuscript

373 – there are a lot studies to cite here. I am not sure self-citing is most appropriate in this context.

- Since the sections on ITCZ have been shortened (in response to RC2), that sentence was deleted. However, please see Sect. 5.3 (Lines 505–524)

377 – my reading of much of the SH paleoclimate literature suggests a dominance of NH insolation.

- Since the sections on ITCZ have been shortened (in response to RC2), that sentence was deleted. However, please see Sect. 5.3 (Lines 505–524)

408 – is “he” appropriate useage for Climates of the Past?

- Sentence deleted after major revision

416 – similar findings were made based on lakes and speleothems in South America, and thus it may be worth citing some of this work here.

- See lines 517–524

475 – does the Gulf Stream actually shut down when AMOC slows? Need to cite a modeling stud to support this claim.

- The section on the 8.2 ka was fully revised (Lines 549–574)

729 – is the name for this reference correct? It is a hyphenated name in the text.

- Good eyes! The reference is now corrected. (Line 1106)

Fig 5 and Fig 6 – It would be helpful to have the isotopes presented on the same scales oriented along the same horizontal lines so that the reader can assess how each stalagmite's isotopic trends and values compare with the other.

Fig 6 – I don't see the connection between solar and stalagmite isotopes here.

For any comments pertaining to figures, we revised many of them (as listed in the Authors' Responses summary submitted earlier). We kindly invite reviewers to look at the new Figures and the supplementary materials.

**Short Comment** by Sebastian Luening (SL)

luening@uni-bremen.de

*Received and published: 12 February 2017*

This is an important new contribution on the palaeoclimate of Madagascar and the greater southeast African region. The link to the migrating / oscillating ITCZ and the influence of solar activity changes is very important and helps to better understand natural climate variability in the region.

Thank you!

The isotope curves contain additional information which is not fully covered in the discussion section of the paper. For example, I took a closer look at the time of the Medieval Climate Anomaly (1000-1200 AD) and noticed that the Anjohibe Cave records a general wet phase 850-1100 AD based on  $\delta^{18}\text{O}$ .

- Please see lines 484–488

Notably, the  $\delta^{18}\text{O}$  development in Anjokipoty Cave differs. Why?

- Please see Lines 301–309

A wetter MCA fits well with the bulk of other regional studies from the region (green dots in this regional MCA mapping project: <http://t1p.de/mwp>).

It is unfortunate that the two  $\delta^{18}\text{O}$  curves in Fig. 5b are plotted on top of each other, making it very hard to see the individual curves. I suggest you separate them for better readability.

- Figures were revised

In the data supplement figure S7 you show datasets AB2 and AB3 without properly introducing them. Please add information on these datasets.

- The manuscript has been fully revised, and this figure is no longer needed, thus it was deleted.

**Anonymous Referee #2 (RC2):**

*Received and published: 22 March 2017*

This paper presents climate reconstruction obtained from two speleothems located in northwestern Madagascar. Three climatic episodes are identified based on change in  $\delta^{18}\text{O}$  and  $\delta^{13}\text{C}$ . The mid Holocene interval is represented by a hiatus that lasted from 7.8 to 1.6 ka. Petrology, mineralogy and stable isotopes are inferred to discuss changes in stalagmite physiognomy and geochemical composition and relate to climatic changes. The discussion on how to detect hiatuses in speleothems is very interesting with issues of broad interest. However several concerns that are listed below are preventing from allowing a publication of these results in their actual presentation.

1) a discussion on age results and age model is lacking.

- please see lines 180–198 and lines 256–284

2) results show several discrepancies between the two speleothems at a same age which are not commented. A presentation of the curves separately is needed with a discussion on the results.

- Figures were separated, thank you for this suggestion!
- Discrepancies discussed in text (please see Lines 301–309)

3) the results are never discussed at a regional scale and some important references are lacking from paleoclimate reconstructions in eastern Africa and Indian Ocean. The Holocene wet-dry-wet succession was already identified in several studies never cited here. The climate boundaries of the Holocene might be spatially limited but not nonexistent.

- New section on regional comparison was added (please see Sect. 5.4. at Lines 526–547)

4) the ITCZ is presented as the main and only driving force to explain the regional hydrological changes ignoring the Indian Ocean Dipole.

- New section on other factors than ITCZ was added (please see Sect. 5.6. at Lines 576–605)

Setting Describe the climatic anomalies that are observed today.

- Please see Sect. 2.3. at Lines 119–164. This is a new section added to the manuscript.

Discussion 8.2 ka: all right I can see a decrease in  $\delta^{18}\text{O}$  and  $\delta^{13}\text{C}$ . However before and after 8.2 k we observe that  $\delta^{18}\text{O}$  has the similar patterns as the  $\delta^{18}\text{O}$  of Greenland  $\delta^{18}\text{O}$  is absent. Is similarity only detected at 8.2k ?

- Since the 8.2 represents an interval of interest of the early Holocene, we focused on its interpretation (section 5.5 was revised)

The discussion on ITCZ is too long and includes too many generalities and no novelties. New scientific questions should arise at the end of the paper.

- Considered (the section on ITCZ has been shortened, please see Sect. 5.3. at lines 505–524)
- New critical points added at the end of the paper (Lines 621–629). Good suggestion, thank you!

Figures We need a map with the location of the other paleoclimate reconstructions around the Indian Ocean and Eastern Africa

- Done, and we added another figure (Fig. 11) showing comparison of time series (as suggested by EC)

Figure 5 I can see many differences between the two sites at a same age.

Figure 6 I do not understand this figure.

- We revised several figures, including figure 5 and 6. We kindly invite RC2 to have a look at the revised figures and the supplementary figures. Thank you!

# Three distinct Holocene intervals of stalagmite deposition and non-deposition revealed in NW Madagascar, and their paleoclimate inferences

Voarintsoa, Ny Riavo G.<sup>1\*</sup>, L. Bruce Railsback<sup>1</sup>, George A. Brook<sup>2</sup>, Lixin Wang<sup>2</sup>, Gayatri Kathayat<sup>3</sup>, Hai Cheng<sup>3,4</sup>, Xianglei Li<sup>3</sup>, R. Lawrence Edwards<sup>4</sup>, Rakotondrazafy Amos Fety Michel<sup>5</sup>, Madison Razanatseheho Marie Olga<sup>5</sup>

<sup>1</sup> Department of Geology, University of Georgia, Athens, GA 30602-2501 U.S.A.

<sup>2</sup> Department of Geography, University of Georgia, Athens, Georgia, 30602-2502 U.S.A.

<sup>3</sup> Institute of Global Environmental Change, Xi'an Jiaotong University, Xi'an, Shaanxi 710049, P.R. China

<sup>4</sup> Department of Earth Sciences, University of Minnesota, Minneapolis, Minnesota 55455, U.S.A.

<sup>5</sup> Department of Geology, University of Antananarivo, Madagascar

\*Correspondence to: Ny Riavo Voarintsoa ([nv1@uga.edu](mailto:nv1@uga.edu) or [nyriavony@gmail.com](mailto:nyriavony@gmail.com))

## ABSTRACT

Petrographic features, mineralogy, and stable isotopes from two stalagmites collected from Anjohibe and Anjokipoty caves allow distinction of three intervals of the Holocene in NW Madagascar. The Malagasy early Holocene (between c. 9.8 and 7.8 ka) and late Holocene (after c. 1.6 ka) intervals (MEHI and MLHI, respectively) record evidence of stalagmite deposition. The Malagasy middle Holocene interval (MMHI, between c. 7.8 ka and 1.6 ka), however, is marked by a depositional hiatus lasting for c. 6500 years.

Deposition of Stalagmites ANJB-2 and MAJ-5 from Anjohibe and Anjokipoty caves, respectively, during the MEHI and the MLHI suggests that these caves were sufficiently supplied with water to allow stalagmite formation. These MEHI and MLHI intervals may have been comparatively wet. In contrast, the long-term depositional hiatus likely suggests that the MMHI was relatively drier than the MEHI and the MLHI. This dry condition could have influenced the amount of water supplied to the cave, and thus prevented formation of the stalagmites.

The alternating “wet/dry/wet” during each of these Holocene intervals could be generally linked to the long-term migration of the Inter-Tropical Convergence Zone (ITCZ). When the ITCZ’s mean position is farther south, NW Madagascar experiences wetter conditions, such as during the MEHI and MLHI, and when it moves north, NW Madagascar climate becomes drier, such as during

**Comment [NRG1]:** This abstract has been fully revised to reflect the major changes done to the manuscript

the MMHI. A similar wet/dry/wet succession during the Holocene has been reported in neighboring locations, such as southeastern Africa.

Stable isotope records also suggest that although the MEHI and MLHI were wetter, the stronger correlation between  $\delta^{18}\text{O}$  and  $\delta^{13}\text{C}$  suggest that the early Holocene vegetation closely responded to changes in climate. In contrast, the weaker correlation between  $\delta^{18}\text{O}$  and  $\delta^{13}\text{C}$  and the positive shift in  $\delta^{13}\text{C}$  suggest that the late Holocene vegetation was controlled by something other than climate, and the plausible explanation for such changes is the practice of swidden agriculture, as reported in previous literature.

Beyond these three subdivisions, the evidence of the 8.2 ka event in the stalagmite records also suggests that climate in Madagascar was sensitive to abrupt climate changes, such as the abrupt influx of the Laurentide Ice Sheet meltwater to the North Atlantic. The freshwater influx into the N. Atlantic, known to have weakened the Atlantic Meridional Overturning Circulation (AMOC), also led to an enhanced temperature gradient between the two hemispheres, i.e. cold NH and warm SH, shifting the mean position of the ITCZ further south. This brought wet conditions in the SH monsoon regions, such as NW Madagascar, and dry conditions in the NH monsoon regions, including the Asian Monsoon and the East Asian Summer Monsoon.

## 1. Introduction

Although much is known about Holocene climate change worldwide (Mayewski et al., 2004; Wanner and Ritz, 2011; Wanner et al., 2011; 2015), high-resolution climate data for the Holocene period is still regionally limited in the Southern Hemisphere (SH) (e.g., Wanner et al., 2008; Marcott et al., 2013; Wanner et al., 2015). This uneven distribution of data hinders our understanding of the spatio-temporal characteristics of Holocene climate change, and the forcings involved. For example, some of these forcings would have an influence on Inter-Tropical Convergence Zone (ITCZ) behavior and monsoonal response in low- to mid-latitude regions (e.g., Wanner et al., 2015; Talento and Barreiro, 2016). The island of Madagascar, in the southwest Indian Ocean (Fig. 1a), is seasonally visited by the ITCZ with a karst region crossing latitudinal belts (Fig. 1c). Thus, it is a natural laboratory to study changes in the ITCZ over time. New records from Madagascar could fill gaps in paleoclimate reconstruction in the SH that might help refine paleoclimate simulations, which in turn could provide better understanding of the global circulation and the land–

atmosphere–ocean interaction during the Holocene.

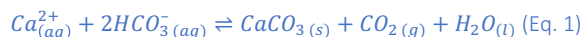
In this paper, we present multiproxy records (stable isotopes, petrography, mineralogy, variability of layer-specific width, or LSW) from stalagmites from Anjohibe and Anjokipoty caves. Stalagmites are used because of their potential to store significant climatic information (e.g., Fairchild and Baker, 2012, p. 9–10), and in Anjohibe Cave, recent studies have shown the replicability of paleoclimate records from stalagmites (e.g., Burns et al., 2016).

Two stalagmites were investigated, and these allowed us to characterize Holocene climate change in NW Madagascar. First, we developed a record of climate change from the multiproxy data. With a better understanding of Madagascar's paleoclimate, we then investigated possible climate drivers of tropical climate change to draw a more comprehensive conclusion on the major factors controlling the hydrological cycle in NW Madagascar and surrounding regions during the Holocene.

## 2. Setting

### 2.1. Stalagmites and their setting

Stalagmites are secondary cave deposits that are  $\text{CaCO}_3$  precipitates from cave dripwater. Calcium carbonate precipitation occurs mainly by  $\text{CO}_2$  degassing, which increases the pH of the dripwater and thus increases the concentration of  $\text{CO}_3^{2-}$ . In some cases, evaporation may also contribute to increased  $\text{Ca}^{2+}$  and/or  $\text{CO}_3^{2-}$  concentration in dripwater.  $\text{CO}_2$  degassing occurs when high- $\text{PCO}_2$  water from the epikarst encounters low- $\text{PCO}_2$  cave air. Evaporation occurs when humidity inside the cave is relatively low. The fundamental equation for stalagmite deposition is shown in Eq. 1.



Growth and non-growth of stalagmites depends on conditions that affect the reaction of Eq. 1 above. An increase in  $\text{Ca}^{2+}$  drives the equation to the right (towards precipitation) and an increase in  $\text{CO}_2$  of the cave air and/or  $\text{H}_2\text{O}$  drives it to the left (towards dissolution). All components of the equation are influenced by the supply of water to the cave, which is generally climate-dependent. More water enters the cave during warm/rainy seasons than during cold/dry seasons. Stalagmites will form when cave dripwater is saturated with respect to calcite and/or aragonite. If the water

Comment [NRG2]: This section was moved in response to RC1



passes through the bedrock too quickly to dissolve significant carbonate rock, and/or enters the cave and reaches the stalagmite too quickly to degas significant CO<sub>2</sub>, it will not be saturated with respect to CaCO<sub>3</sub>, inhibiting stalagmite formation. Stalagmite growth will slow as dripwater declines and will stop entirely if flow ceases. Vegetation provides CO<sub>2</sub> to the soil via root respiration so the vegetation cover above the cave and the type of vegetation can promote or limit stalagmite growth. Overall, the karst hydrological system plays a crucial role in the deposition and non-deposition of stalagmites, and this is closely linked to changes in local and regional environment and climate.

## 2.2. Regional environmental setting

Stalagmites ANJB-2 and MAJ-5 were collected from Anjohibe and Anjokipoty caves, respectively, in the Majunga region of NW Madagascar (Fig. 1). Sediments and fossils from these caves have already provided many insights about the paleoenvironmental and archaeological history of NW Madagascar (e.g., Burney et al., 1997, 2004; Brook et al., 1999; Gommery et al., 2011; Jungers et al., 2008; Vasey et al., 2013; Burns et al., 2016; Voarintsoa et al., 2017b).

Anjohibe (S15° 32' 33.3"; E046° 53' 07.4") and Anjokipoty (S15° 34' 42.2"; E046° 44' 03.7") are about 16.5 km apart (Fig. 1c). Their location in the zone visited by the ITCZ (e.g., Nassor and Jury, 1998) makes them ideal sites to test the hypothesis that latitudinal migration of the ITCZ influenced the Holocene climate of NW Madagascar (e.g., Chiang and Bitz, 2005; Broccoli et al., 2006; Chiang and Friedman, 2012; Schneider et al., 2014). The ITCZ brings north or northwesterly monsoon winds to Madagascar during austral summers, in a pattern that the Service Météorologique of Madagascar calls the "Malagasy monsoon". Majunga has a tropical savanna climate (Aw) according to the Köppen-Geiger climate classification, with a distinct wet summer (from October to April) and dry winter (May-September). The mean annual rainfall is around 1160 mm. The mean maximum temperature in November, the hottest month in the summer, is about 32°C. The mean minimum temperature in July, the coldest month of the dry winter, is about 18°C (Fig. 1b).

**Comment [NRG3]:** Revised in response to RC1. Some idea repetitions were removed

### 2.3. Climate of Madagascar

The climate of Madagascar is unique because of its varied topography and its position in the Indian Ocean. Some scientists refer Madagascar as a “laboratory” for paleoecological study (e.g., Burney, 1997) because it is not only susceptible to several climatic forcing mechanisms but also an island with recent anthropogenic interaction, living imprints in the geological records (e.g., Burney et al., 2003, 2004; Matsumoto and Burney, 1994; Crowley and Samonds, 2013; Burns et al., 2016; Voarintsoa et al., 2017b). Its climate has been reviewed in several recent works (e.g., Jury, 2003; DGM, 2008, Douglas and Zinke, 2015, p. 281-299; Voarintsoa et al., 2017b, p.138-139; Scropton et al., 2017). Regionally distinct rainfall gradients from east to west and from north to south are evident across the country (Jury, 2003; Dewar and Richard, 2007), and these are linked to easterly trade-winds in winter (May-October) and northwesterly tropical storms in summer, respectively. The Malagasy monsoon is modulated by the seasonal north-south migration of the ITCZ, which is the main driver of austral summer rainfall in Madagascar. The ITCZ’s mean position has shifted northward or southward depending on the global climate conditions, but most generally it migrates towards the Earth’s warmer hemisphere (Frierson and Hwang, 2012; Kang et al., 2008; McGee et al., 2014; Sachs et al., 2009). A relationship between this long-term migration of the ITCZ and climate in Madagascar was reported in NW Madagascar between c. 370 CE and 800 CE (see Fig. 8 of Voarintsoa et al., 2017b).

Beyond ITCZ, climate of Madagascar is also influenced by changes in Indian Ocean sea surface temperatures (SST) (Zinke et al., 2004; see also Kunhert et al., 2014) and changes in SST of the adjacent current off southwestern Madagascar, the Agulhas Current (Lutjeharms, 2006; Beal et al., 2011; Zinke et al., 2014). The most immediate signal is the Indian Ocean Dipole (IOD), or Indian Ocean Zonal Mode (Li et al., 2003). IOD-like patterns have been proposed as possible contributors to Holocene climate variability in tropical Indian Ocean (Abram et al., 2009; Tierney et al., 2013). IOD is as a coupled atmosphere-ocean mode in the tropical Indian Ocean (e.g., Saji et al., 1999; Webster et al., 1999; Brown et al., 2009; Yagamata et al., 2004; Behera et al., 2013). It is characterized by a reversal of the climatological SST gradient and winds across the Indian Ocean basin (Saji et al., 1999; Webster et al., 1999; Abram et al., 2007; Brown et al., 2009). A positive IOD event starts with anomalous SST cooling along the Sumatra-Java coast in the eastern Indian Ocean

**Comment [NRG4]:** New section inserted in response to RC2

**Comment [NRG5]:** Inserted in response to EC

(Abram et al., 2007, 2008), along with positive SST anomaly in the western part of the basin (e.g., Saji et al., 1999; Abram et al., 2007). Such positive IOD events are observed to result in increased precipitation, sometimes causing devastating floods, over East Africa (Black et al., 2003; Saji et al., 1999; Webster et al., 1999; Saji and Yagamata, 2003; Weller and Cai, 2014). Such events have also enhanced precipitation over the northern part of India, the Bay of Bengal, Indochina, and southern part of China in 1994 (e.g., Behera et al., 1999; Guan and Yamagata, 2003; Saji and Yagamata, 2003). In the eastern Indian Ocean, a positive IOD is found to intensify El-Niño related drought, often as severe droughts, over Indonesia (Webster et al., 1999; Weller and Cai, 2014). It is however, important to note that the relationship between IOD and El-Niño Southern Oscillation (ENSO) is still debated. While some researchers found no relationships (e.g., Saji et al., 1999; Li et al., 2003; Lee et al., 2008), others found some relationships (e.g., Brown et al., 2009; Schott et al., 2009; Shinoda et al., 2004; Venzke et al., 2000; Abram et al., 2008; Saji and Yagamata, 2003; Meyers et al., 2007).

Apart from the coral study of Zinke et al. (2004) and the stalagmite study of Scroxton et al. (2017), very little is known about the effect of the IOD on Madagascar. One objective of this stalagmite study is to better understand how such mechanisms influenced climate in Madagascar during the Holocene.

#### 2.4. The Holocene in NW Madagascar

Little is hitherto known about Holocene climate change in NW Madagascar nor about the major drivers of long-term climatic changes there. Most paleoclimate information from this region covers the last two millennia with more focus on the anthropogenic effects on the Malagasy ecosystems (e.g., Crowley and Samonds, 2013; Burns et al., 2016; Voarintsoa et al., 2017b). This is because several studies show that megafaunal extinctions in Madagascar coincide with the arrival of humans around 2-3 ka BP (e.g., see Table 1 of Virah-Sawmy et al., 2010; MacPhee and Burney, 1991; Burney et al., 1997; Crowley, 2010). There are even fewer long-term paleoclimate records for the NW region, with only sediments from Lake Mitsinjo (3,500 yr. BP; Matsumoto and Burney, 1994) and stalagmites from Anjohibe Cave (40,000 yr. BP; Burney et al. 1997) providing records of more than 3 kyr. Even though these records provided useful information about the

Comment [NRG6]: Revised in response to RC1 (L100, 101)

177 paleoenvironmental changes in NW Madagascar, their linkages to global climatic change, such as  
 178 the linkages to the ITCZ, are not yet fully understood.

### 179 3. Methods

#### 180 3.1. Radiometric dating

181 A total of 22 samples were drilled from Stalagmite ANJB-2 and 9 samples for Stalagmite  
 182 MAJ-5 for U-series dating (Table S1 and S2). Each sample is a long (~5 to 20 mm), narrow (~1-  
 183 2mm), and shallow (~1 mm) trench, allowing us to extract 50–250 mg of CaCO<sub>3</sub> powder. We  
 184 followed the chemical procedures described in Edwards et al. (1987) and Shen et al. (2002) when  
 185 separating uranium and thorium. U/Th measurements were performed on the multi-collector ICP-  
 186 MS of the University of Minnesota, USA and on a similar instrument in the Stable Isotopes  
 187 Laboratory of Xi'an, in Jiaotong, China. Instrument details are provided in Cheng et al. (2013).  
 188 Corrected <sup>230</sup>Th ages assume an initial <sup>230</sup>Th/<sup>232</sup>Th atomic ratio of  $4.4 \pm 2.2 \times 10^{-6}$ . This is the ratio  
 189 for “bulk earth” or crustal material at secular equilibrium with a <sup>232</sup>Th/<sup>238</sup>U value of 3.8. The  
 190 uncertainty in the “bulk earth” value is assumed to be ±50% (see footnotes to Table S1 and S2).  
 191 The error in the final “corrected age” incorporates this uncertainty. The radiometric data are  
 192 reported as year BP, where BP is Before Present, and “Present” is A.D. 1950. Stalagmite  
 193 chronologies were constructed using the StalAge1.0 algorithm of Scholz and Hoffman (2011) and  
 194 Scholz et al. (2012), an algorithm using a Monte-Carlo simulation designed to construct  
 195 speleothem age models. The algorithm can identify major and minor outliers and age inversions.  
 196 The StalAge scripts were run on the statistics program R version 3.2.2 (2015-08-14). The age  
 197 models were adjusted considering hiatus surfaces identified in the samples, using the approach of  
 198 Railsback et al. (2013; see their Fig. 9).

199

#### 200 3.2. Petrography and mineralogy

201 Petrography and mineralogy of the two stalagmites were investigated 1) by examining both  
 202 the polished surfaces and the scanned images of the sectioned stalagmites, and by identifying any  
 203 diagenetic fabrics (e.g., Zhang et al., 2014) that could potentially affect stable isotope values, 2) by  
 204 observing eleven oversized thin sections (3x2 in) under the Leitz Laborlux 12 Pol microscope and  
 205 the Leica DMLP equipped with QCapture in the Sedimentary Geochemistry Lab at the University

**Comment [NRG7]:** In this method section, we clearly added a subheading indicating the different approaches performed in this study

**Comment [NRG8]:** This section has been revised to address RC1 and RC2's request about details about radiometric dating  
 We added information about the correction as requested by RC1

of Georgia, 3) by using scanning electron microscopy (SEM) to better understand the mineralogical fabrics at locations of interest (Fig. S13), and 4) by analyzing about 30–100 mg of powdered spelean layers ( $n=15$ ) on a Bruker D8 X-ray Diffractometer in the Department of Geology, University of Georgia. For calcite and aragonite identification, we used  $\text{CoK}\alpha$  radiation at a  $2\theta$  angle between  $20^\circ$  and  $60^\circ$ .

Layer-specific width (LSW) of clearly-defined layers was measured at selected locations on the stalagmite polished surfaces (Fig. S4; Sletten et al., 2013; Railsback et al., 2014; Voarintsoa et al., 2017b). LSW is the horizontal distance between two points on the flanks of the stalagmite where convexity is greatest. It is the width near the top of the stalagmite when the layer being examined was deposited. LSW is measured at right angles to the growth axis of the stalagmite; it is the horizontal distance between points on the layer growth surface becomes tangent to a line inclined at  $35^\circ$  to the growth axis (Fig. S4). LSW may vary along the length of the stalagmite, with smaller values suggesting drier conditions and larger values wetter conditions.

### 3.3. Stable isotopes

Stable isotope samples of 50–100  $\mu\text{g}$  were manually drilled along the stalagmite's growth layers at the crest. The trench size is very small ( $1.5 \times 0.5 \times 0.5 \text{ mm}$ ). Since a small mixture of calcite and aragonite could potentially change the  $\delta^{18}\text{O}$  and  $\delta^{13}\text{C}$  of the measured spelean layers (see for example Frisia et al., 2002), drilling and sample extraction was carefully done on individually discrete layers using the smallest drill-bit head (SSW-HP-1/4) to avoid potential mixing between calcite and aragonite. The polished surface of the two stalagmites were examined to see if features of diagenetic alteration are present (see for example fig. 2 of Zhang et al., 2014), but none was found. During sampling, the mineralogy at the crest, where stable isotope samples were extracted, was recorded for future mineralogical correction.

Aragonite oxygen and carbon isotopic corrections were performed to compensate for aragonite's inherent fractionation of heavier isotopes (e.g., Romanek et al., 1992; Kim et al., 2007; McMillan et al., 2005) and to remove the mineralogical bias in isotopic interpretation between calcite and aragonite. The correction consists of subtracting 0.8‰ for  $\delta^{18}\text{O}$  (Kim and O'Neil, 1997; Tarutani et al., 1969; Kim et al., 2007; Zhang et al., 2014) and 1.7 ‰ for  $\delta^{13}\text{C}$  (Rubinson and Clayton,

#### Comment [NRG9]:

Re: isotopic correction and mineralogy

In response to RC1 and EC, we run more X-Ray diffraction (see supplementary figures). Fifteen samples were run, which approximate XRD analyses done in other studies (e.g., Zhang et al., 2013; Zhang et al., 2014; Scroxton et al., 2017) X-ray diffraction helped at understanding the nature of mineralogy with similar texture and fabric, and thus running XRD for each stable isotope subsample is unnecessary. It is also technically unfeasible given the larger sample size (a minimum of 30 mg of powder for one XRD versus 50-100 micrograms for stable isotopes).

We, however, carefully recorded the mineralogy at each crest while extracting subsamples for stable isotopes. This information is crucial to correct for isotopic values.

The isotopic correction was done based on the mineralogy at the crest where stable isotopes were extracted.

Comment [NRG10]: In this section, we addressed the issue raised by RC1 and EC about isotopic correction. We also added detailed text in the supplementary document.

Comment [NRG11]: At each sampling, I recorded the mineralogy of the stalagmite. We run X-ray diffraction to understand the nature of mineralogy by similar texture and mineral fabrics. (to further address RC1 and EC1 concern)

1969; Romanek et al., 1992) for the aragonite as has been done previously (e.g., Holmgren et al., 2003; Sletten et al., 2013; Liang et al., 2015; Railsback et al., 2016; Voarintsoa et al., 2017a) as shown in equations 2 and 3 below (where  $R_{A/C}$  is the aragonite percentage if not 100%).

$$\delta^{18}\text{O}_{\text{corr.}} (\text{‰}, \text{VPDB}) = \delta^{18}\text{O}_{\text{uncorr.}} (\text{‰}, \text{VPDB}) - [R_{A/C} \times 0.8 (\text{‰}, \text{VPDB})] \text{ (Eq. 2)}$$

$$\delta^{13}\text{C}_{\text{corr.}} (\text{‰}, \text{VPDB}) = \delta^{13}\text{C}_{\text{uncorr.}} (\text{‰}, \text{VPDB}) - [R_{A/C} \times 1.7 (\text{‰}, \text{VPDB})] \text{ (Eq. 3)}$$

Supplementary Figures S6–S8 show both the corrected and uncorrected isotopic records.

For the analytical methods, oxygen and carbon isotope ratios were measured using the Finnigan MAT-253 mass spectrometer fitted with the Kiel IV Carbonate Device of the Xi'an Stable Isotope Laboratory in China (ANJB-2; n=654) and using the Delta V Plus at 50°C fitted with the GasBench-IRMS machine of the Alabama Stable Isotope Laboratory in USA (MAJ-5; n=286). Analytical procedures using the MAT 253 are identical to those described in Dykoski et al. (2005), with isotopic measurement errors of less than 0.1 ‰ for both  $\delta^{13}\text{C}$  and  $\delta^{18}\text{O}$ . Analytical methods and procedures using the GasBench-IRMS machine are identical to those described in Skrzypek and Paul (2006), Paul and Skrzypek (2007), and Lambert and Aharon (2011), with  $\pm 0.1$  ‰ errors for both  $\delta^{13}\text{C}$  and  $\delta^{18}\text{O}$ . In both techniques, the results are reported relative to Vienna PeeDee Belemnite (VPDB) and with standardization relative to NBS19. An inter-lab comparison of the isotopic results was conducted, and it involved replicating every tenth sample of Stalagmite MAJ-5 at both labs. This exercise showed a strong correlation between the lab results (Fig. S5).

## 4. Results

### 4.1. Radiometric data

Results from radiometric analyses of the two stalagmites are presented in Tables S1 and S2. Corrected  $^{230}\text{Th}$  ages suggest that Stalagmite ANJB-2 was deposited between c. 8977 $\pm$ 50 and c. 161 $\pm$ 64 yr. BP, and Stalagmite MAJ-5 was deposited between c. 9796 $\pm$ 64 and c. 150 $\pm$ 24 yr. BP. These ages collectively indicate stalagmite deposition at the beginning (between 9.8 and 7.8 ka BP) and at the end of the Holocene (after c. 1.6 ka BP). In both stalagmites, the older ages have small  $2\sigma$  errors and they generally fall in correct stratigraphic order, except sample ANJB-2-120 and its replicate ANJB-2-120R, which were not used because of the sample's high porosity and high detritals content. In contrast, many of the younger ages have larger uncertainties. This is

**Comment [NRG12]:** This is specifically how the corrections were done (in response to RC1, L133, and EC)

Note: To give readers the freedom of interpreting and evaluating the stable isotope data with minimal influence from such correction, we decided to update the stable isotope time series in all the figures of the main manuscript to only show the raw data, and added a separate time series plot in the supplementary document showing both the untransformed and transformed values.

We also added additional text in the supplementary materials

**Comment [NRG13]:** As suggested by RC1, we simply refer the reader to the relevant data table (L142). We discussed about the corrections (which are also detailed in the method section) and about the quality of the data.

RC2 states that a discussion on age results and age model is lacking, here we added details, and we also included more details in the method section

mainly because many of the younger samples have very low uranium concentration and the detrital thorium concentration is also high, similar to what Dorale et al. (2004) reported. We also understand that the value for initial  $^{230}\text{Th}$  correction, i.e. the initial  $^{230}\text{Th}/^{232}\text{Th}$  atomic ratio of  $4.4 \pm 2.2 \times 10^{-6}$  for a bulk earth with a  $^{232}\text{Th}/^{238}\text{U}$  value of 3.8, in these samples could have slightly altered the  $^{230}\text{Th}$  age of these younger samples, leading to larger uncertainties (such as discussed in Lachniet et al., 2012). We encountered similar problems while working on other younger samples from the same cave, but we compared the stable isotope profile with other published records using isochron corrections, and results did not differ significantly (see Fig. 9 of Voarintsoa et al., 2017b). Since this work does not focus on decadal or centennial interpretation of the Late Holocene stable isotope data, additional chronology adjustment has not been made, and we used the chronology from StalAge to construct the time series. However, in Figures 5 and 6, age uncertainties are given below the stable isotope profiles so that comparisons with other records can accommodate these uncertainties.

The key finding from our age and petrographic data for the two stalagmites is that they suggest that there were three distinct intervals of growth and non-growth during the Holocene (Figs. 2–4, 7). The information suggesting this includes: (1)  $\text{CaCO}_3$  deposition between c. 9.8 and 7.8 ka B.P., (2) a long depositional hiatus between c. 7.8 and 1.6 ka B.P., and (3) resumption of  $\text{CaCO}_3$  deposition after c. 1.6 ka B.P. In the rest of the paper, we will refer to these intervals as the Malagasy Early Holocene Interval (MEHI), Malagasy Mid-Holocene Interval (MMHI), and Malagasy Late Holocene Interval (MLHI), respectively.

#### 4.2. Stable isotopes

Raw values of  $\delta^{18}\text{O}$  and  $\delta^{13}\text{C}$  for Stalagmite ANJB-2 range from  $-8.9$  to  $-2.3\text{‰}$  (mean =  $-5.0\text{‰}$ ), and from  $-11.0$  to  $+5.2\text{‰}$  (mean =  $-4.2\text{‰}$ ), respectively, relative to VPDB. Raw values of  $\delta^{18}\text{O}$  and  $\delta^{13}\text{C}$  for Stalagmite MAJ-5 range from  $-8.8$  to  $-0.9\text{‰}$  (mean =  $-4.9\text{‰}$ ), and from  $-9.4$  to  $+2.6\text{‰}$  (mean =  $-4.4\text{‰}$ ), respectively, relative to VPDB. Mean  $\delta^{18}\text{O}$  and  $\delta^{13}\text{C}$  values are distinguishable between the MEHI and the MLHI. In both stalagmites, the amplitude of  $\delta^{18}\text{O}$  fluctuations was fairly constant throughout the Holocene; whereas the  $\delta^{13}\text{C}$  profile shows a dramatic shift toward higher values (i.e. from  $-10.9\text{‰}$  to  $+3.8\text{‰}$ , VPDB) at c. 1.5 ka BP.

**Comment [NRG14]:** RC1 stated that the “larger context of this record is difficult to identify”. This paragraph would summarize and clarify RC1’s concerns. Please also see the discussion section on these three intervals (5.2 and 5.3 at lines 386–502 and lines 504–523)

Also, RC1 was confused with the wording (L148) so we rewrote this paragraph to make it clearer.

**Comment [NRG15]:** All the values in here are revised in response to RC1 (L154)

The MEHI and MLHI are isotopically distinct (Fig. 4). The MEHI is characterized by statistically correlated  $\delta^{18}\text{O}$  and  $\delta^{13}\text{C}$  ( $r^2=0.65$  and  $0.53$ ), and much depleted  $\delta^{13}\text{C}$  values (c  $-11.0$  to  $-4.0$  ‰). The 8.2 ka event, a widespread cold event in the NH (e.g., Alley et al., 1997), is also apparent in the stalagmite records. Stalagmite  $\delta^{18}\text{O}$  and  $\delta^{13}\text{C}$  ratios reach their lowest values of  $-6.8$  and  $-10.9$ ‰, respectively during that interval (Figs. 5, 12). In contrast to the MEHI, the values of  $\delta^{18}\text{O}$  and  $\delta^{13}\text{C}$  during the MLHI are poorly correlated ( $r^2=0.25$  and  $0.17$ ), and  $\delta^{13}\text{C}$  values are more enriched (Figs. 4, 6).

Since Stalagmites ANJB-2 and MAJ-5 were collected from two different caves 16 km apart, discrepancies between the stable isotopes at the same age are expected, suggesting that local conditions could be one of the discrepancy factors. Another potential source for the discrepancy is the larger uncertainty of the younger ages due to low uranium and high detrital concentrations. This U-Th aspect has been a challenge for several young stalagmites (e.g., Dorale et al., 2004; Lachniet et al., 2012) including samples from NW Madagascar (this study). While the utility of speleothems as a climate proxy largely depends on replication of stable isotope values, it is important to note that perfect stable isotope replication can only occur between stalagmites collected from the same cave chamber (e.g., Dong et al., 2010; Burns et al., 2016).

**Comment [NRG16]:** Inserted in response to RC1, SL, and RC2 about perfect replication between the two stalagmites

#### 4.3. Mineralogy, petrography, and layer-specific width

In both stalagmites, the hiatus of deposition is characterized by a well-developed Type L surface (Figs. 2, 3, S15). Petrography and mineralogy are distinct before and after this hiatus (Fig. 3). Below the hiatus, laminations are well preserved in both stalagmites. Above the hiatus, laminations are not well-preserved, although noted in some intervals.

In Stalagmite ANJB-2, the layer-specific width varies from 37 to 26.5 mm with a mean of 30 mm. It decreases to 28 mm at the hiatus (Fig. 3). Below the hiatus, mineralogy is dominated by aragonite, although a few thick layers of calcite are also identified. A thin ( $\sim 2$ -3 mm) but remarkable layer of white, very soft, and porous aragonite is identified just below the hiatus (Fig. S15). This layer is covered by a very thin layer of dirty carbonate. Above the hiatus, mineralogy is also composed of calcite and aragonite, with calcite dominant, and the calcite layers contain macro-cavities that are mostly off-axis macroholes (Shtober-Zisu et al., 2012).



In Stalagmite MAJ-5, LSW varies from 50 to 22 mm with a mean of 35.5 mm. It decreases to 22 mm at the hiatus (Fig. 3). Below the hiatus, mineralogy is a mixture of calcite and aragonite. Above the hiatus, mineralogy is mainly calcite and macro-cavities are also present throughout that upper part of the stalagmite.

#### 4.4. Summary of results

The various records from Stalagmites ANJB-2 and MAJ-5 suggest three distinct climate/hydrological intervals of the Holocene. The MEHI (c. 9.8 to 7.8 ka BP), with evidence of stalagmite deposition, is characterized by statistically correlated  $\delta^{18}\text{O}$  and  $\delta^{13}\text{C}$  ( $r^2=0.65$  and  $0.53$ ) and more negative  $\delta^{13}\text{C}$  values (c.  $-11.0$  to  $-4.0$  ‰). The MMHI (c. 7.8 to 1.6 ka BP) is marked by a long-term hiatus in deposition, which is preceded by a well developed Type L surface in both Stalagmite ANJB-2 and MAJ-5 (Figs. 3, S15). The Type L surface is observed as an upward narrowing of the stalagmite's width and layer thickness. It is particularly well developed in Stalagmite MAJ-5 (Fig. S15). In Stalagmite ANJB-2, the hiatus at the Type L surface is preceded by a c. 3 mm thick layer of highly porous, very soft, and fibrous white crystals of aragonite (the only aragonite with such properties). This aragonite is topped by a thin and well-defined layer of detrital materials (Fig. S15), further supporting the presence of a hiatus. Finally, the MLHI (after c. 1.6 ka BP) is characterized by poorly correlated  $\delta^{18}\text{O}$  and  $\delta^{13}\text{C}$  ( $r^2=0.25$ – $0.17$ ). This interval is additionally marked by a shift in  $\delta^{13}\text{C}$  toward higher values (Figs. 4, 6).

## 5. Discussion

### 5.1. Paleoclimate significance of stalagmite growth and non-growth: implications for paleohydrology

Growth and non-growth of stalagmites depends on several factors linked to water availability, which is largely determined by climate (more water during warm/rainy seasons and less water during cold/dry seasons). Water is the main dissolution and transporting agent for most chemicals in speleothems. Cave hydrology varies significantly over time in response to climate, and this variability influences the formation or dissolution of  $\text{CaCO}_3$ . In this regard, calcium carbonate does not form if there is little or no water entering the cave, or if there is too much (see

**Comment [NRG17]:** We moved a paragraph introducing stalagmite in the setting section in response to RC1 (L205)

We however kept the information pertaining to the “Paleoclimate significance of stalagmite and non-growth: implications for paleohydrology” here at the beginning of the discussion section to remind the readers that the timing of deposition and non-deposition of these stalagmites could be the primary key to understand the overall paleohydrology during the Holocene in the studied region.

Sect. 2.1). Absence of groundwater recharge most typically occurs during extremely dry conditions, whereas excessive water input to the cave occurs during extremely wet conditions. In the latter scenario, water is undersaturated and flow rates are too fast to allow degassing. Often, water availability is reflected in the extent of vegetation above and around the cave, as plants require soil moisture or shallow groundwater to survive and propagate, and this contributes to the stalagmites' processes of formation. The linkage of stalagmites' growth and non-growth to cave dripwater and soil CO<sub>2</sub> is broadly influenced by changes in climate.

Major hiatuses in stalagmite deposition could be marked by a variety of features, including the presence of erosional surfaces, chalkification, dirt bands/detrital layers, offsetting of the growth axis, and/or sometimes by color changes (e.g., Holmgren et al., 1995; Dutton et al., 2009; Railsback et al., 2013; Railsback et al., 2015; Voarintsoa et al., 2017a). Railsback et al. (2013) were specifically able to identify significant features in stalagmites that allow distinction between non-deposition during extremely wet (Type E surfaces) and non-deposition during extremely dry conditions (Type L surfaces; Fig. 3). Physical properties of stalagmites that are evidence of extreme dry and wet events are summarized in Table 1 of Railsback et al. (2013) and the mechanism is explained in their Figure 5.

Type E surfaces are layer-bounding surfaces between two spelean layers when the underlying layers show evidence of truncation. The truncation results from dissolution or erosion (thus the name "E") of previously-formed layers of stalagmites by abundant undersaturated water. Type E surfaces are commonly capped with a layer of calcite (Railsback et al., 2013). This mineralogical trend is not surprising as calcite commonly forms under wetter conditions (e.g., Murray, 1954; Pobeguín, 1965; Siegel, 1965; Thraillkill, 1971; Cabrol and Coudray, 1982; Railsback et al. 1994; Frisia et al., 2002). Additionally, non-carbonate detrital materials are commonly abundant with varying grain size (i.e., from silt- to sand-size; Railsback et al., 2013).

Type L surfaces, on the other hand, are layer-bounding surfaces where the layers became narrower upward and thinner towards the flanks of the stalagmite. Decreases in layer thickness and stalagmites width of the stalagmites upward are indications of lessening deposition (thus the name "L"; Railsback et al., 2013). Aragonite is a very common mineralogy below a Type L surface, especially in warmer settings. Layers of aragonite commonly form under drier conditions (Murray,

1954; Pobeguín, 1965; Siegel, 1965; Thrailkill, 1971; Cabrol and Coudray, 1982; Railsback et al., 1994; Frisia et al., 2002). Non-carbonate detrital materials are scarce, and if present, they tend to form a very thin horizon of very fine dust material (Railsback et al., 2013). Identification of Type L surfaces is aided by measuring the LSW (e.g., Sletten et al., 2013; Railsback et al., 2014), an approach that is also performed in this study (Fig. S4).

## 5.2. Holocene climate in NW Madagascar

Although the specific boundaries between the Early, Mid, and Late Holocene have been proposed for global application (Walker et al., 2012; Head and Gibbard, 2015), their use is still spatially limited (e.g., Wanner et al., 2015). The age models and petrographic features of Stalagmites ANJB-2 and MAJ-5 suggest three distinct but different Holocene climate intervals (MEHI, MMHI, and MLHI; see Sect. 4.1) in NW Madagascar. These intervals are illustrated in the sketches of Figure 4. In this paper, these Malagasy intervals are intended not to argue against the previously proposed intervals of the Holocene (Walker et al., 2012; Head and Gibbard, 2015). Instead, they are presented to aid discussion of the available records. For comparison, the intervals are shown in Fig. 7d.

### 5.2.1. Malagasy early Holocene interval (c. 9.8–7.8 ka BP)

Stalagmite deposition during the early Holocene suggests that the chambers, where stalagmites ANJB-2 and MAJ-5 were collected, were sufficiently supplied with water to allow  $\text{CaCO}_3$  precipitation, in accord with Eq.1. This in turn implies relatively wet conditions that could indicate longer summer rainy seasons relative to modern climate, or wet years in NW Madagascar (see Supplementary Text 4 and Fig. 8). The correlative  $\delta^{13}\text{C}$  and  $\delta^{18}\text{O}$  values further suggest that vegetation consistently responded to changes in moisture availability, which in turn was dependent on climate.

One striking aspect of the Stalagmite ANJB-2  $\delta^{18}\text{O}$  and  $\delta^{13}\text{C}$  records is that they parallel the  $\delta^{18}\text{O}$  of the Greenland ice core records at c 8.2 ka BP (Figs. 5 and 12). An X-ray diffraction spectrum for this period, at 195–202 mm from the top of the stalagmite, suggests that the mineralogy at 8.2 ka BP is 100% calcite (Figs. S14, S16–S17). This calcite is not a diagenetic product of aragonite for

Comment [NRG18]: Inserted in response to RC1 (272)

Comment [NRG19]: Rephrased in response to RC1 (276)

three reasons. First, the laminations in the thick layer of calcite were not altered (Figs. S16–S17). Second, the polished surface of the stalagmite shows no evidence of fiber relicts and textural ghosts such as observed in Juxtlahuaca Cave in southwestern Mexico (Lachniet et al., 2012) and in Shennong Cave in southeastern China (Zhang et al., 2014). Third, petrographic comparison with known examples of primary and secondary calcite observation under microscope (e.g., Railsback, 2000; Perrin et al., 2014) suggests that there is no strong evidence of aragonite-to-calcite transformation. The decrease in  $\delta^{18}\text{O}$  and  $\delta^{13}\text{C}$  values and the presence of calcite mineralogy at the same interval combine to suggest a wet 8.2 ka BP event in NW Madagascar. The 8.2 ka BP event is a prominent cold event in the North Atlantic records and many NH terrestrial records. It may have been triggered by a release of freshwater from the melting Laurentide Ice Sheet into the North Atlantic basin (e.g., Alley et al., 1997; Barber et al., 1999). Freshwater influx to the Atlantic could have altered the Atlantic Meridional Overturning Circulation (AMOC, e.g., Clark et al., 2001), and could eventually have influenced the climate of Madagascar (Sect. 5.5). Our records reveal a strong link between paleoenvironmental changes in Madagascar and abrupt climatic events in the NH records, suggesting causal relationships.

The MEHI terminated when conditions became much drier, as suggested by increasing  $\delta^{18}\text{O}$  and  $\delta^{13}\text{C}$  values in Stalagmite ANJB-2, by decreasing LSW of both stalagmites, and by major Type L surfaces in both stalagmites. The thin (c. 3 mm), porous, and white aragonite layer in Stalagmite ANJB-2, a very similar deposit to that described in Niggemann et al. (2003), suggests that the terminal drought was at times severe. Aragonite is a  $\text{CaCO}_3$  polymorph that forms preferentially under drier conditions (Murray, 1954; Pobeguín, 1965; Siegel, 1965; Thrailkill, 1971; Cabrol and Coudray, 1982; Railsback et al. 1994; Frisia et al., 2002). The porous aragonite layer in Stalagmite ANJB-2 is capped by a very thin layer of non-carbonate, brown detritus, which may have been transported to the stalagmite as an aerosol and accumulated on the dry stalagmite surface over time. Accumulation of the detritus must take place in the absence of dripwater (e.g., Railsback et al., 2013). A shift to drier conditions is also supported by isotopic data from Stalagmite ANJ94-5 from Anjohibe Cave (Wang and Brook, 2013; Wang, 2016) in which relatively low  $\delta^{13}\text{C}$  and  $\delta^{18}\text{O}$  values prior to 7600 BP give way to episodically greater values thereafter.

**Comment [NRG20]:** Inserted to address RC1 about diagenetic alteration. Three additional figures were added in the supplementary materials

### 5.2.2. Malagasy mid-Holocene interval (c. 7.8–1.6 ka BP)

The only data we have for the MMHI is the long term (~6.5 ka) depositional hiatus in both stalagmites (Figs. 2–3), that potentially indicate dry conditions. The question is why did neither stalagmite grow during the MMHI? Here, we try to explain the factors and the climatic conditions that may have been responsible for it.

The documented severe dry conditions at the end of the MEHI (see Sect. 5.2.1) could have had a significant influence (1) on the cave hydrological system (e.g., Fig. 5 of Asrat et al., 2007; Bosak, 2010), such as the water conduits (primary or secondary porosity) to the chambers, and (2) on the vegetation cover above the caves, particularly above the chambers where Stalagmites ANJB-2 and MAJ-5 were collected. On one hand, it is possible that the dry conditions late in the MEHI could not only bring lesser water recharge to the cave, but also lowered the hydraulic head, and increased the rate of evapo-transpiration in the vadose zone. This condition possibly allowed more air to penetrate the aquifer, perhaps enhancing prior carbonate precipitation (PCP) in pores and conduits above the caves (e.g., Fairchild and McMillan, 2007; Fairchild et al., 2000; Johnson et al., 2006; Karmann et al., 2007; McDonald et al., 2007). This process must have blocked water moving towards Stalagmites ANJB-2 and MAJ-5. On the other hand, the late MEHI drying trend (Sect. 5.2.1) could have challenged vegetation to grow, and we assume that some areas above Anjohibe and Anjokipoty caves must have been devoid of vegetation. Consequently, biomass activities could have been reduced. Because vegetation contributes CO<sub>2</sub> to the carbonic acid dissolving CaCO<sub>3</sub>, its absence in certain areas above the cave could decrease the pH of the percolating water, and perhaps dissolution did not occur. Under these conditions, even if water reached the stalagmites, it may not have precipitated carbonate.

Whatever factors were responsible for the long term-depositional hiatus in Stalagmite ANJB-2 and MAJ-5, we believe that the hiatus was caused by disturbances to water catchments that feed the chambers at Anjohibe and Anjokipoty caves. The disturbances could be inherited from the very dry conditions at the end of the MEHI, and/or due to the lack of water supply, perhaps associated with an increase in epikarst ventilation, and/or by the absence of vegetation. Water and vegetation are two components of the karst system that play an important role in

**Comment [NRG21]:** We fully revised this section in response to RC1, and also to make it clearer that the MMHI is marked by a depositional hiatus in both samples

CaCO<sub>3</sub> dissolution and precipitation (see Eq. 1). Their disturbance may have limited limestone dissolution in the epikarst and then carbonate precipitation in the cave zone.

Other evidence supports the idea of at least episodic dryness during the MMHI. A work on a 2-meter long stalagmite (ANJ94-5) from Anjohibe Cave suggests episodic dryness during the MMHI and a depositional hiatus around the time when Stalagmites ANJB-2 and MAJ-5 stopped growing (Wang and Brook, 2013; Wang, 2016). For regional comparison, dry spells were also felt in Central and Southeastern Madagascar (e.g., Gasse and Van Campo, 1998; Virah-Sawmy et al., 2009).

In summary, several lines of evidence suggest relatively drier climate in NW Madagascar during the MMHI compared to the MEHI. Drier intervals generally imply drier summer seasons with less rainfall (Fig. 8), perhaps reflecting shorter visits by the ITCZ. In this regard, even though the region received rainfall, the necessary conditions could not have been attained to activate the growth of Stalagmites ANJB-2 and MAJ-5, thus the hiatuses.

### 5.2.3. Malagasy Late Holocene Interval (c. 1.6 ka–present)

Resumption of stalagmite deposition after c. 1.6 ka BP suggests a wetter climate in NW Madagascar with reactivation of the previous epikarst hydrologic system. Conditions must have been similar to those of the early Holocene. Wet conditions between c. 850 and 1100 AD in Stalagmite ANJB-2 and Stalagmite MAJ-5, specifically coincide with glacial advances at northern high latitudes (Holzhauser et al., 2005) and a cooler interval of the Medieval Climate Anomaly, as suggested by a negative temperature Anomaly in the NH (e.g., Büntgen et al., 2011; Mann et al., 1998; Mann and Bradley, 1999, see also Fig. S18). The sudden beginning of stalagmite growth during the MLHI and the large  $\delta^{13}\text{C}$  shift from depleted to enriched values at c. 1.5 ka BP (Fig. 6), after such long hiatuses may have been associated with changes in vegetation cover above the cave linked to recent human activities (e.g., Burns et al., 2016; Crowley and Samonds, 2013; Crowther et al., 2016; Voarintsoa et al., 2017b). Lower  $\delta^{13}\text{C}$  values in Stalagmite MAJ-5 after 0.8 ka BP (Fig. 3), compared to higher values in Stalagmite ANJB-2, suggests different conditions in or above the two caves. More human disturbance at one site could account for the different trends,

Comment [NRG22]: Inserted in response to SL

or alternatively changes in cave micro-climate, or in the hydrologic catchments of the two stalagmites.

Although the stalagmite data indicate overall wetter conditions during the last c. 1.6 kyr, there were occasional dry periods, as suggested by several positive peaks in the stalagmite  $\delta^{18}\text{O}$  records. Drier intervals during the Late Holocene are observed in the Anjohibe data between c. AD 755 and 795 (i.e., 1195–1155 yr. BP; Voarintsoa et al., 2017b). Similar conditions have been recorded in other paleoenvironmental studies, in which a peak drought c. 1300–950 cal BP was reported (Burney, 1987a, b; Burney, 1993; Matsumoto and Burney, 1994; Virah-Sawmy et al., 2009).

### 5.3. Holocene climate in NW Madagascar: implications for ITCZ dynamics

Figures 7 and 8 depict possible conditions in NW Madagascar during the MEHI, the MMHI, and the MLHI. Figure 9 summarizes the possible forcings mechanisms linked to the latitudinal migration of the ITCZ.

In NW Madagascar, stalagmite deposition during the MEHI and the MLHI could suggest there was sufficient dripwater for stalagmite growth and therefore wetter conditions. This could have been linked to a more southerly mean position of the ITCZ. Factors that could influence the mean position of the ITCZ include changes in insolation (e.g., Haug et al., 2001; Wang et al., 2005; Cruz et al., 2005; Fleitmann et al., 2003, 2007; Schefuß et al., 2005; Suzuki, 2011; Kutzbach and Liu, 1997; Partridge et al., 1997; Verschuren et al., 2009; Voarintsoa et al., 2017a) and difference in temperature between the two hemispheres (e.g., Chiang and Bitz, 2005; Broccoli et al., 2006; Chiang and Friedman, 2012; Kang et al., 2008; McGee et al., 2014; Talento and Barreiro, 2016).

In contrast, the depositional hiatuses during the MMHI could suggest drier conditions, and thus a northward migration of the mean ITCZ. It seems to agree with the paleoclimate simulation of Braconnot et al. (2007) of the 6 ka event, suggesting that the NH insolation increased (Braconnot et al., 2000; see also Chiang, 2009). This northward shift in the mean position of the ITCZ is consistent with drier conditions, i.e. weaker South American Summer Monsoon (e.g., Cruz et al., 2005; Seltzer et al., 2000; Wang et al., 2007; but see also Fig. 9 of Zhang et al., 2013) but

**Comment [NRG23]:** RC2 suggested to shorten the discussion about ITCZ, thus some changes we made earlier addressing RC1's comments were deleted, but we added the requested citations (L 373)

wetter conditions in the northern tropics (e.g., Dykoski et al., 2005; Fleitmann et al., 2007; Gasse, 2000; Haug et al., 2001; Weldeab et al., 2007; Zhang et al., 2013).

**Comment [NRG24]:** Inserted in response to RC1 (L416)

#### 5.4. Regional comparisons

**Comment [NRG25]:** This is a new section inserted in response to RC2, a supplementary Table has been added

Despite differences in Holocene paleoclimate reconstructions for southern Africa, comparison of the NW Madagascar records with records from neighboring locations (Figs. 10–11; Table S3) shows that the Holocene wet/dry/wet succession reported in this study has also been identified at other locations. For example, hydrogen isotope compositions of the n-C<sub>31</sub> alkane in Geob9307-3 from a 6.51 m long marine sediment core retrieved about 100 km off the Zambezi delta suggest a similar wet/dry/wet climate during Early, Middle, and Late Holocene respectively (Schefuß et al., 2011). Those changes correspond to changes in temperature from ~26.5° to 27.25° to 27°C, respectively, in the Mozambique Channel, as suggested by alkenone SST records from sediment cores MD79257 (Bard et al., 1997; Sonzogni et al., 1998). The Zambezi catchment is specifically relevant here because it is located at the southern boundary of the modern ITCZ, and so has similar climatic setting as NW Madagascar, and its sensitivity to the latitudinal migration of the ITCZ could parallel that of Madagascar. Likewise, temperature reconstruction from the Mozambique Channel could be used to link regional changes in paleorainfall with regional changes in temperature. A general overview of the Holocene climate in the African neighboring locations to Madagascar suggests a roughly consistent wetter and drier climate during the early and middle Holocene, respectively (Fig. 11, Table S3, also see Gasse, 2000; Singarayer and Burrough, 2015). However, Late Holocene paleoclimate reconstructions vary. A single answer to this variability is unlikely, but several overlapping factors, including the latitudinal migration of the ITCZ, changes in ocean oscillations and sea surface temperatures, volcanic aerosols, and anthropogenic influences could have played a major role in such variability (e.g., Nicholson, 1996; Gasse, 2000; Tierney et al., 2008; Truc et al., 2013). Assessing these factors is beyond the scope of this study.

#### 5.5. The 8.2 ka event in Madagascar: linkage to ITCZ and AMOC

**Comment [NRG26]:** We added more modeling citations here in response to RC1 (L475)

The 8.2 ka event was a significant short-lived cooling of the N Atlantic and NH during the Early Holocene (Alley et al., 1997). It is apparent in the ANJB-2 and MAJ-5 stalagmite records as a wet



interval (Sect. 5.2.1; Figs. 5, 12). The 8.2 ka event is a known interval of abrupt freshwater influx from the melting Laurentide Ice Sheet into the North Atlantic (Alley et al., 1997; Barber et al., 1999; Kleiven et al., 2008; Carlson et al., 2008; Renssen et al., 2010; Wiersma et al., 2011; Wanner et al., 2015). It is equivalent to the sharp peak of Bond cycle number 5 (Bond et al. 1997, 2001). This influx of meltwater altered the density and salinity of the NADW. Thornalley et al. (2009) report that there was a decrease in NADW salinity to approximately 34 p.s.u. during the Early Holocene.

Understanding the AMOC's influence on Madagascar's hydroclimate could help us better understand global atmospheric and oceanic circulation, particularly in the SH. An increase in the flow of freshwater to the North Atlantic decreases the formation of North Atlantic Deep Water, reducing the meridional heat transport (Barber et al., 1999; Clark et al., 2001; Daley et al., 2011; Vellinga and Wood 2002; Dong and Sutton 2002, 2007; Dahl et al. 2005; Zhang and Delworth 2005; Daley et al., 2011; Renssen et al., 2001). Weakening of the AMOC would ultimately cause a widespread cooling in the NH regions (e.g., Clark et al., 2001; Thomas et al., 2007) but warming in the SH regions (Wiersma et al., 2011; Wiersma and Renssen, 2006). This "cold NH–warm SH" climate response is similar to the "bipolar seesaw" effect, well-known during the last glacial (e.g., Crowley, 1992; Broecker, 1998). The interhemispheric temperature difference between the NH and SH from such effect could be the driver of the southward displacement of the mean position of the ITCZ during the 8.2 ka abrupt cooling event. This in turn could have led to an intensified Malagasy monsoon in NW Madagascar during austral summers, a phenomenon identical to the South American Summer Monsoon identified in Brazil (e.g., Cheng et al., 2009). In contrast, regions in the NH monsoon regions became dry at 8.2 ka BP as the Asian Monsoon and the East Asian Monsoon became weaker (e.g., Wang et al., 2005; Dykoski et al., 2005; Cheng et al., 2009; Liu et al., 2013).

**Comment [NRG27]:** Updated in response to RC1's comment (L291, 475)

#### 5.6. Beyond the ITCZ: IOD and ENSO influence on Madagascar's climate

Although the ITCZ is the main driver of rainfall availability in Madagascar, recent studies have also suggested the importance of SST changes in the surrounding ocean and teleconnection with other climatic phenomena. Scropton et al. (2017) linked rainfall changes in eastern Indian Ocean with expansion and contraction of the ITCZ along with positive IOD. Zinke et al. (2004) revealed

**Comment [NRG28]:** New section inserted in response to RC2

**Comment [NRG29]:** Inserted in response to EC

strong Indian Ocean subtropical dipole events that were in phase with ENSO indices between AD 1880 and 1920, and between 1930 and 1940, and after 1970 in austral summers. Brook et al. (1999, p. 700) suggested linkages between rainfall and ENSO in NW Madagascar since AD 1550, a relationship that is less clear and complicated. This complication could be associated with an unclear or yet a limited understanding of the relationship between IOD and ENSO, which is not yet fully understood (e.g., Saji et al., 1999; Li et al., 2003; Lee et al., 2008 versus Brown et al., 2009; Schott et al., 2009; Shinoda et al., 2004; Venzke et al., 2000; Abram et al., 2008; Saji and Yagamata, 2003; Meyers et al., 2007).

Our understanding of the oceanic and atmospheric circulation is challenged because IOD and ENSO share similar features in the associated SST and precipitation anomalies (e.g., Saji et al., 1999; Webster et al., 1999; Krishnamurty and Kirtman, 2003; Meyers et al., 2007). In addition, the driving mechanisms of ENSO and IOD during the Holocene are not fully understood, even though linkages with insolation were reported (e.g., Otto-Bliesner et al., 2003; Liu et al., 2000; Timmermann et al., 2007; Zheng et al., 2008; Tudhope et al., 2001; Moy et al., 2002; Koutavas et al., 2006; Conroy et al., 2008; Kuhnert et al., 2014; Liu et al., 2003; Abram et al., 2007). The IOD signals in the tropical Indian Ocean may additionally be overridden by the global mean temperature (e.g., Vecchi and Soden, 2007; Zheng et al., 2013), or the signals could be strongly influenced by monsoonal changes in the surrounding landmasses (e.g., Abram et al., 2007; Qiu et al., 2012).

Despite the complicated relationships, it is possible that climate of NW Madagascar has been influenced by ITCZ, IOD, and ENSO, but this is still poorly understood during the Holocene. We are aware that the temporal and spatial resolution of available records make this investigation challenging, and we understand that the range of uncertainty of radiometric ages of several paleoclimate data could be another barrier to fully evaluate such relationship (see for example Fig. 7 of Kuhnert et al., 2014).

## 6. Conclusions

Petrography, mineralogy, and stable isotope records from Stalagmite ANJB-2, from Anjohibe Cave, and Stalagmite MAJ-5, from Anjokipoty Cave, combine to suggest three distinct intervals of changing climate in Madagascar during the Holocene: relatively wet conditions during the MEHI,

relatively drier conditions, possibly due to episodic dryness, during the MMHI, and relatively wet conditions during the MLHI. The timing of stalagmite deposition during the MEHI and the MLHI in NW Madagascar could be attributed to a more southward migration and/or an expanded ITCZ, increasing the duration of the summer rainy seasons, perhaps linked to a stronger Malagasy monsoon. This could have been tied to insolation, the temperature gradient between the two hemispheres, and weakening of the AMOC. In contrast, the c. 6500 year depositional hiatus during the MMHI could indicate a northward migration of the ITCZ, leading to relatively drier conditions in NW Madagascar. The evidence of the 8.2 ka event in the Malagasy records further suggests a strong link between paleoenvironmental changes in Madagascar and abrupt climatic events in the NH, suggesting that during the MEHI Madagascar's climate was very sensitive to abrupt ocean-atmosphere events in the NH.

Although the ITCZ is one of the climatic drivers influencing climate in Madagascar and its surrounding locations, several climatic factors need to be investigated in more detail. For example, we do not fully understand if the latitudinal migration is paired with the expansion and/or expansion of the ITCZ, responsible to changes in several monsoon systems. In addition, the interplay between ITCZ and other factors involving changes in sea surface temperatures, particularly IOD-ENSO, needs to be investigated in details. Data-model comparison seems to be an approach to better understand such relationship. The lack of spatial and temporal resolution of paleoclimate records is still a challenge to fully understand the climate system during the Holocene.

Comment [NRG30]: Section added in response to RC2

#### Author Contribution

N.R.G.V. conceived the research and experiments. N.R.G.V., G.K., A.F.M.R., and M.O.M.R. did the fieldwork and collected the samples. X.L., G.K., H.C., R.L.E., and N.R.G.V. contributed to the <sup>230</sup>Th dating analyses. N.R.G.V. provided detailed investigation of the two stalagmites, provided stable isotope measurements, prepared thin sections, and conducted X-ray diffraction analyses. G.K. also assisted with the isotopic measurements on Stalagmite ANJB-2. N.R.G.V. wrote the first draft of the manuscript and led the writing. L.B.R. and G.A.B. provided a thorough review of the draft.

637 N.R.G.V. and L.B.R. discussed and revised the manuscript, with additional comments [from L.W.](#)  
638 N.R.G.V revised the paper with input from all authors, [reviewers](#), and [editors](#).

639

#### 640 **Competing Interests**

641 The authors declare no conflict of interest.

#### 642 **Acknowledgments**

643 This work was supported by grants from (1) the National Natural Science Foundation of China  
644 (NSFC 41230524, NBRP 2013CB955902, and NSFC 41472140) to Hai Cheng and Gayatri Kathayat,  
645 (2) the Geological Society of America Research Grant (GSA 11166-16) and John Montagne Fund  
646 Award [to N. Voarintsoa](#), (3) the Miriam Watts-Wheeler Graduate Student Grant from the  
647 Department of Geology at UGA [to N. Voarintsoa](#), and (4) the International Association of  
648 Sedimentology Post-Graduate Grant to N. Voarintsoa. We also thank the Schlumberger  
649 Foundation for providing additional support to N. Voarintsoa's research. We thank the  
650 Department of Geology at the University of Antananarivo, in Madagascar, the Ministry of Energy  
651 and Mines, the local village and guides in Majunga for easing our research in Madagascar. [We](#)  
652 [specifically thank Prof. Voahangy Ratrimo, former Department Head of the Department of Geology](#)  
653 [at the University of Antananarivo, for collaborating with us and for giving us permission to conduct](#)  
654 [field expedition in Madagascar](#). We thank [Prof. Paul Schroeder](#) for giving us access to use the X-  
655 ray diffractometer of the Geology Department to conduct analysis on the mineralogy of the two  
656 stalagmites. [We thank Prof. John Shields of the Georgia Electron Microscope, University of](#)  
657 [Georgia, for giving Voarintsoa access to use the Zeiss 1450EP \(Carl Zeiss, Inc., Thornwood, NY\) for](#)  
658 [SEM purposes](#). We also thank [Prof. Sally Walker](#) for allowing us to use the microscope of the  
659 paleontology lab and for helping us photograph the stalagmites at very high resolution. We also  
660 thank [Prof. John Chiang of the University of California at Berkeley](#), for sharing his thoughts and  
661 [guiding us to literature of relevance to this study](#).

662

## References

- Abram, N. J., Gagan, M. K., Liu, Z. Y., Hantoro, W. S., McCulloch, M. T., and Suwargadi, B. W.: Seasonal characteristics of the Indian Ocean Dipole during the Holocene epoch, *Nature*, 445, 299-302, Doi 10.1038/Nature05477, 2007.
- Abram, N. J., McGregor, H. V., Gagan, M. K., Hantoro, W. S., and Suwargadi, B. W.: Oscillations in the southern extent of the Indo-Pacific Warm Pool during the mid-Holocene, *Quaternary Sci Rev*, 28, 2794-2803, Doi 10.1016/J.Quascirev.2009.07.006, 2009.
- Abram, N. J., Gagan, M. K., Cole, J. E., Hantoro, W. S., and Mudelsee, M.: Recent intensification of tropical climate variability in the Indian Ocean, *Nature Geosci*, 1, 849-853, 2008.
- Alley, R. B., Mayewski, P. A., Sowers, T., Stuiver, M., Taylor, K. C., and Clark, P. U.: Holocene climatic instability: A prominent, widespread event 8200 yr ago, *Geology*, 25, 483-486, 1997.
- Asrat, A., Baker, A., Mohammed, M. U., Leng, M. J., Van Calsteren, P., and Smith, C.: A high-resolution multi-proxy stalagmite record from Mechara, Southeastern Ethiopia: palaeohydrological implications for speleothem palaeoclimate reconstruction, *J Quaternary Sci*, 22, 53-63, Doi 10.1002/Jqs.1013, 2007.
- Barber, D. C., Dyke, A., Hillaire-Marcel, C., Jennings, A. E., Andrews, J. T., Kerwin, M. W., Bilodeau, G., McNeely, R., Southon, J., Morehead, M. D., and Gagnon, J. M.: Forcing of the cold event of 8,200 years ago by catastrophic drainage of Laurentide lakes, *Nature*, 400, 344-348, Doi 10.1038/22504, 1999.
- Bard, E., Rostek, F., and Sonzogni, C.: Interhemispheric synchrony of the last deglaciation inferred from alkenone palaeothermometry, *Nature*, 385, 707-710, Doi 10.1038/385707a0, 1997.
- Beal, L. M., De Ruijter, W. P. M., Biastoch, A., Zahn, R., and 136, S. W. I. W. G.: On the role of the Agulhas system in ocean circulation and climate, *Nature*, 472, 429-436, Doi 10.1038/Nature09983, 2011.
- Behera, S. K., Krishnan, R., and Yamagata, T.: Unusual ocean-atmosphere conditions in the tropical Indian Ocean during 1994, *Geophys Res Lett*, 26, 3001-3004, Doi 10.1029/1999gl010434, 1999.

- 690 Behera, S., Brandt, P., and Reverdin, G.: The Tropical Ocean Circulation and Dynamics, in: Ocean  
691 Circulation and Climate: A 21st Century Perspective, edited by: Siedler, G., Griffies, S.,  
692 Gould, J., and Church, J., Elsevier, Amsterdam, Netherlands, 385-412, 2013.
- 693 Berger, A., and Loutre, M. F.: Insolation Values for the Climate of the Last 10 million years,  
694 Quaternary Sci Rev, 10, 297-317, Doi 10.1016/0277-3791(91)90033-Q, 1991.
- 695 Black, E., Slingo, J., and Sperber, K. R.: An observational study of the relationship between  
696 excessively strong short rains in coastal East Africa and Indian Ocean SST, Mon Weather  
697 Rev, 131, 74-94, Doi 10.1175/1520-0493(2003)131<0074:Aosotr>2.0.Co;2, 2003.
- 698 Bond, G., Kromer, B., Beer, J., Muscheler, R., Evans, M. N., Showers, W., Hoffmann, S., Lotti-Bond,  
699 R., Hajdas, I., and Bonani, G.: Persistent solar influence on north Atlantic climate during the  
700 Holocene, Science, 294, 2130-2136, Doi 10.1126/Science.1065680, 2001.
- 701 Bond, G., Showers, W., Cheseby, M., Lotti, R., Almasi, P., deMenocal, P., Priore, P., Cullen, H.,  
702 Hajdas, I., and Bonani, G.: A pervasive millennial-scale cycle in North Atlantic Holocene and  
703 glacial climates, Science, 278, 1257-1266, DOI 10.1126/science.278.5341.1257, 1997.
- 704 Bosák, P.: Dating of processes in karst and caves: implication for show caves presentation, 6th ISCA  
705 Congress Proceedings, Slovakia, 2011, 34-41, 2011.
- 706 Braconnot, P., Marti, O., Joussaume, S., and Leclainche, Y.: Ocean feedback in response to 6 kyr BP  
707 insolation, J Climate, 13, 1537-1553, 2000.
- 708 Braconnot, P., Otto-Bliesner, B., Harrison, S., Joussaume, S., Peterchmitt, J. Y., Abe-Ouchi, A.,  
709 Crucifix, M., Driesschaert, E., Fichet, T., Hewitt, C. D., Kageyama, M., Kitoh, A., Laine, A.,  
710 Loutre, M. F., Marti, O., Merkel, U., Ramstein, G., Valdes, P., Weber, S. L., Yu, Y., and Zhao,  
711 Y.: Results of PMIP2 coupled simulations of the Mid-Holocene and Last Glacial Maximum -  
712 Part 1: experiments and large-scale features, Clim Past, 3, 261-277, 2007.
- 713 Broccoli, A. J., Dahl, K. A., and Stouffer, R. J.: Response of the ITCZ to Northern Hemisphere cooling,  
714 Geophys Res Lett, 33, 10.1029/2005gl024546, 2006.
- 715 Broecker, W. S.: Paleocean circulation during the Last Deglaciation: A bipolar seesaw?,  
716 Paleoceanography, 13, 119-121, 10.1029/97PA03707, 1998.

717 Brook, G. A., Rafter, M. A., Railsback, L. B., Sheen, S. W., and Lundberg, J.: A high-resolution proxy  
718 record of rainfall and ENSO since AD 1550 from layering in stalagmites from Anjohibe Cave,  
719 Madagascar, *Holocene*, 9, 695-705, Doi 10.1191/095968399677907790, 1999.

720 Brown, J., Lynch, A. H., and Marshall, A. G.: Variability of the Indian Ocean Dipole in coupled model  
721 paleoclimate simulations, *J Geophys Res-Atmos*, 114, 10.1029/2008jd010346, 2009.

722 Büntgen, U., Tegel, W., Nicolussi, K., McCormick, M., Frank, D., Trouet, V., Kaplan, J. O., Herzig, F.,  
723 Heussner, K. U., Wanner, H., Luterbacher, J., and Esper, J.: 2500 Years of European Climate  
724 Variability and Human Susceptibility, *Science*, 331, 578-582, DOI  
725 10.1126/science.1197175, 2011.

726 Burney, D. A., Burney, L. P., Godfrey, L. R., Jungers, W. L., Goodman, S. M., Wright, H. T., and Jull,  
727 A. J. T.: A chronology for late prehistoric Madagascar, *Journal of Human Evolution*, 47, 25-  
728 63, Doi 10.1016/J.jhevol.2004.05.005, 2004.

729 Burney, D. A., James, H. F., Grady, F. V., Rafamantanantsoa, J. G., Ramilisonina, Wright, H. T., and  
730 Cowart, J. B.: Environmental change, extinction and human activity: evidence from caves  
731 in NW Madagascar, *Journal of Biogeography*, 24, 755-767, 10.1046/J.1365-  
732 2699.1997.00146.X, 1997.

733 Burney, D. A., Robinson, G. S., and Burney, L. P.: Sporormiella and the late Holocene extinctions in  
734 Madagascar, *P Natl Acad Sci USA*, 100, 10800-10805, Doi 10.1073/Pnas.1534700100,  
735 2003.

736 Burney, D. A.: Late Holocene Environmental-Changes in Arid Southwestern Madagascar,  
737 *Quaternary Res*, 40, 98-106, Doi 10.1006/Qres.1993.1060, 1993.

738 Burney, D. A.: Late Holocene Vegetational Change in Central Madagascar, *Quaternary Res*, 28, 130-  
739 143, Doi 10.1016/0033-5894(87)90038-X, 1987a.

740 Burney, D. A.: Late Quaternary Stratigraphic Charcoal Records from Madagascar, *Quaternary Res*,  
741 28, 274-280, Doi 10.1016/0033-5894(87)90065-2, 1987b.

742 Burney, D. A.: Tropical islands as paleoecological laboratories: Gauging the consequences of  
743 human arrival, *Hum Ecol*, 25, 437-457, Doi 10.1023/A:1021823610090, 1997.

744 Burns, S. J., Godfrey, L. R., Faina, P., McGee, D., Hardt, B., Ranivoharimanana, L., and Randrianasy,  
745 J.: Rapid human-induced landscape transformation in Madagascar at the end of the first

746 millennium of the Common Era, *Quaternary Sci Rev*, 134, 92-99,  
 747 [10.1016/j.quascirev.2016.01.007](https://doi.org/10.1016/j.quascirev.2016.01.007), 2016.

748 Cabrol, P., and Coudray, J.: Climatic fluctuations influence the genesis and diagenesis of carbonate  
 749 speleothems in southwestern France, *National Speleological Society Bulletin* 44, 112-117,  
 750 1982.

751 Carlson, A. E., Legrande, A. N., Oppo, D. W., Came, R. E., Schmidt, G. A., Anslow, F. S., Licciardi, J.  
 752 M., and Obbink, E. A.: Rapid early Holocene deglaciation of the Laurentide ice sheet, *Nat*  
 753 *Geosci*, 1, 620-624, [10.1038/ngeo285](https://doi.org/10.1038/ngeo285), 2008.

754 Cheng, H., Edwards, R. L., Shen, C. C., Polyak, V. J., Asmerom, Y., Woodhead, J., Hellstrom, J., Wang,  
 755 Y. J., Kong, X. G., Spotl, C., Wang, X. F., and Alexander, E. C.: Improvements in Th-230 dating,  
 756 Th-230 and U-234 half-life values, and U-Th isotopic measurements by multi-collector  
 757 inductively coupled plasma mass spectrometry, *Earth Planet Sc Lett*, 371, 82-91, Doi  
 758 [10.1016/J.Epsl.2013.04.006](https://doi.org/10.1016/J.Epsl.2013.04.006), 2013.

759 Cheng, H., Fleitmann, D., Edwards, R. L., Wang, X. F., Cruz, F. W., Auler, A. S., Mangini, A., Wang, Y.  
 760 J., Kong, X. G., Burns, S. J., and Matter, A.: Timing and structure of the 8.2 kyr BP event  
 761 inferred from delta O-18 records of stalagmites from China, Oman, and Brazil, *Geology*, 37,  
 762 1007-1010, Doi [10.1130/G30126a.1](https://doi.org/10.1130/G30126a.1), 2009.

763 Chiang, J. C. H., and Bitz, C. M.: Influence of high latitude ice cover on the marine Intertropical  
 764 Convergence Zone, *Clim Dynam*, 25, 477-496, [10.1007/s00382-005-0040-5](https://doi.org/10.1007/s00382-005-0040-5), 2005.

765 Chiang, J. C. H., and Friedman, A. R.: Extratropical Cooling, Interhemispheric Thermal Gradients,  
 766 and Tropical Climate Change, *Annual Review of Earth and Planetary Sciences*, 40, 383-412,  
 767 [10.1146/Annurev-Earth-042711-105545](https://doi.org/10.1146/Annurev-Earth-042711-105545), 2012.

768 Chiang, J. C. H.: The Tropics in Paleoclimate, *Annual Review of Earth and Planetary Sciences*, 37,  
 769 263-297, [10.1146/annurev.earth.031208.100217](https://doi.org/10.1146/annurev.earth.031208.100217), 2009.

770 Clark, P. U., Marshall, S. J., Clarke, G. K. C., Hostetler, S. W., Licciardi, J. M., and Teller, J. T.:  
 771 Freshwater Forcing of Abrupt Climate Change During the Last Glaciation, *Science*, 293, 283-  
 772 287, [10.1126/science.1062517](https://doi.org/10.1126/science.1062517), 2001.



773 Conroy, J. L., Overpeck, J. T., Cole, J. E., Shanahan, T. M., and Steinitz-Kannan, M.: Holocene  
774 changes in eastern tropical Pacific climate inferred from a Galápagos lake sediment record,  
775 Quaternary Sci Rev, 27, 1166-1180, 2008.

776 Crowley, B. E., and Samonds, K. E.: Stable carbon isotope values confirm a recent increase in  
777 grasslands in northwestern Madagascar, The Holocene, 23, 1066-1073, Doi  
778 10.1177/0959683613484675, 2013.

779 Crowley, B. E.: A refined chronology of prehistoric Madagascar and the demise of the megafauna,  
780 Quaternary Sci Rev, 29, 2591-2603, Doi 10.1016/J.Quascirev.2010.06.030, 2010.

781 Crowley, T. J.: North Atlantic Deep Water cools the southern hemisphere, Paleoceanography, 7,  
782 489-497, 10.1029/92PA01058, 1992.

783 Crowther, A., Lucas, L., Helm, R., Horton, M., Shipton, C., Wright, H. T., Walshaw, S., Pawlowicz,  
784 M., Radimilahy, C., Douka, K., Picornell-Gelabert, L., Fuller, D. Q., and Boivin, N. L.: Ancient  
785 crops provide first archaeological signature of the westward Austronesian expansion, P  
786 Natl Acad Sci USA, 113, 6635-6640, 10.1073/pnas.1522714113, 2016.

787 Cruz, F. W., Burns, S. J., Karmann, I., Sharp, W. D., Vuille, M., Cardoso, A. O., Ferrari, J. A., Dias, P.  
788 L. S., and Viana, O.: Insolation-driven changes in atmospheric circulation over the past  
789 116,000 years in subtropical Brazil, Nature, 434, 63-66, Doi 10.1038/Nature03365., 2005.

790 Dahl, K., Broccoli, A., and Stouffer, R.: Assessing the role of North Atlantic freshwater forcing in  
791 millennial scale climate variability: a tropical Atlantic perspective, Clim Dynam, 24, 325-  
792 346, 10.1007/s00382-004-0499-5, 2005.

793 Daley, T. J., Thomas, E. R., Holmes, J. A., Street-Perrott, F. A., Chapman, M. R., Tindall, J. C., Valdes,  
794 P. J., Loader, N. J., Marshall, J. D., Wolff, E. W., Hopley, P. J., Atkinson, T., Barber, K. E.,  
795 Fisher, E. H., Robertson, I., Hughes, P. D. M., and Roberts, C. N.: The 8200yr BP cold event  
796 in stable isotope records from the North Atlantic region, Global Planet Change, 79, 2011.

797 Dewar, R. E., and Richard, A. F.: Evolution in the hypervariable environment of Madagascar, P Natl  
798 Acad Sci USA, 104, 13723-13727, 10.1073/pnas.0704346104, 2007.

799 DGM [Direction Générale de la Météorologie]: Le changement climatique à Madagascar. 2008.

800 Dong, B. W., and Sutton, R. T.: Adjustment of the coupled ocean-atmosphere system to a sudden  
801 change in the Thermohaline Circulation, Geophys Res Lett, 29, 2002.

802 Dong, B., and Sutton, R. T.: Enhancement of ENSO variability by a weakened Atlantic thermohaline  
803 circulation in a coupled GCM, *J Climate*, 20, 4920-4939, 10.1175/Jcli4284.1, 2007.

804 Dong, J. G., Wang, Y. J., Cheng, H., Hardt, B., Edwards, R. L., Kong, X. G., Wu, J. Y., Chen, S. T., Liu,  
805 D. B., Jiang, X. Y., and Zhao, K.: A high-resolution stalagmite record of the Holocene East  
806 Asian monsoon from Mt Shennongjia, central China, *Holocene*, 20, 257-264, Doi  
807 10.1177/0959683609350393, 2010.

808 Dorale, J. A., Edwards, R. L., Alexander, E. C., Shen, C.-C., Richards, D. A., and Cheng, H.: Uranium-  
809 Series Dating of Speleothems: Current Techniques, Limits, & Applications, in: *Studies of*  
810 *Cave Sediments: Physical and Chemical Records of Paleoclimate*, edited by: Sasowsky, I. D.,  
811 and Mylroie, J., Springer US, Boston, MA, 177-197, 2004.

812 Douglass, K., and Zinke, J.: Forging Ahead By Land and By Sea: Archaeology and Paleoclimate  
813 Reconstruction in Madagascar, *Afr Archaeol Rev*, 32, 267-299, 10.1007/s10437-015-9188-  
814 5, 2015.

815 Dutton, A., Bard, E., Antonioli, F., Esat, T. M., Lambeck, K., and McCulloch, M. T.: Phasing and  
816 amplitude of sea-level and climate change during the penultimate interglacial, *Nat Geosci*,  
817 2, 355-359, 10.1038/Ngeo470, 2009.

818 Dykoski, C. A., Edwards, R. L., Cheng, H., Yuan, D. X., Cai, Y. J., Zhang, M. L., Lin, Y. S., Qing, J. M.,  
819 An, Z. S., and Revenaugh, J.: A high-resolution, absolute-dated Holocene and deglacial  
820 Asian monsoon record from Dongge Cave, China, *Earth Planet Sc Lett*, 233, 71-86,  
821 10.1016/j.epsl.2005.01.036, 2005.

822 Edwards, R. L., Chen, J. H., and Wasserburg, G. J.: U-238 U-234-Th-230-Th-232 Systematics and the  
823 Precise Measurement of Time over the Past 500000 Years, *Earth Planet Sc Lett*, 81, 175-  
824 192, 1987.

825 Fairchild, I. J., and Baker, A.: *Speleothem Science: From Processes to Past Environments*, edited  
826 by: Bradley, R., Wiley-Blackwell, 2012.

827 Fairchild, I. J., and McMillan, E. A.: Speleothems as indicators of wet and dry periods, *International*  
828 *Journal of Speleology*, 36, 69-74, 2007.

829 Fairchild, I. J., Borsato, A., Tooth, A. F., Frisia, S., Hawkesworth, C. J., Huang, Y. M., McDermott, F.,  
830 and Spiro, B.: Controls on trace element (Sr-Mg) compositions of carbonate cave waters:

831 implications for speleothem climatic records, *Chem Geol*, 166, 255-269, Doi  
832 10.1016/S0009-2541(99)00216-8, 2000.

833 Fleitmann, D., Burns, S. J., Mangini, A., Mudelsee, M., Kramers, J., Villa, I., Neff, U., Al-Subbary, A.  
834 A., Buettner, A., Hippler, D., and Matter, A.: Holocene ITCZ and Indian monsoon dynamics  
835 recorded in stalagmites from Oman and Yemen (Socotra), *Quaternary Sci Rev*, 26, 170-188,  
836 10.1016/J.Quascirev.2006.04.012, 2007.

837 Fleitmann, D., Burns, S. J., Mudelsee, M., Neff, U., Kramers, J., Mangini, A., and Matter, A.:  
838 Holocene forcing of the Indian monsoon recorded in a stalagmite from Southern Oman,  
839 *Science*, 300, 1737-1739, Doi 10.1126/Science.1083130, 2003.

840 Frierson, D. M. W., and Hwang, Y. T.: Extratropical Influence on ITCZ Shifts in Slab Ocean  
841 Simulations of Global Warming, *J Climate*, 25, 720-733, 10.1175/Jcli-D-11-00116.1, 2012.

842 Frisia, S., Borsato, A., Fairchild, I. J., McDermott, F., and Selmo, E. M.: Aragonite–calcite  
843 relationships in speleothems (Grotte de Clamouse, France): environment, fabrics, and  
844 carbonate geochemistry., *J Sediment Res*, 772, 687-699, 2002.

845 Garcin, Y., Vincens, A., Williamson, D., Guiot, J., and Buchet, G.: Wet phases in tropical southern  
846 Africa during the last glacial period, *Geophys Res Lett*, 33, 10.1029/2005GL025531, 2006.

847 Gasse, F., and Van Campo, E.: A 40,000-yr pollen and diatom record from Lake Tritrivakely,  
848 Madagascar, in the southern tropics, *Quaternary Res*, 49, 299-311, Doi  
849 10.1006/Qres.1998.1967, 1998.

850 Gasse, F.: Hydrological changes in the African tropics since the Last Glacial Maximum, *Quaternary*  
851 *Sci Rev*, 19, 189-211, Doi 10.1016/S0277-3791(99)00061-X, 2000.

852 Gommery, D., Ramanivosoa, B., Faure, M., Guerin, C., Kerloc'h, P., Senegas, F., and  
853 Randrianantenaina, H.: Oldest evidence of human activities in Madagascar on subfossil  
854 hippopotamus bones from Anjohibe (Mahajanga Province), *Cr Palevol*, 10, 271-278,  
855 10.1016/j.crpv.2011.01.006, 2011.

856 Guan, Z. Y., and Yamagata, T.: The unusual summer of 1994 in East Asia: IOD teleconnections,  
857 *Geophys Res Lett*, 30, Art1544 10.1029/2002gl016831, 2003.

858 Haug, G. H., Hughen, K. A., Sigman, D. M., Peterson, L. C., and Rohl, U.: Southward migration of  
859 the intertropical convergence zone through the Holocene, *Science*, 293, 1304-1308, Doi  
860 10.1126/Science.1059725, 2001.

861 Head, M. J., and Gibbard, P. L.: Formal subdivision of the Quaternary System/Period: Past, present,  
862 and future, *Quatern Int*, 383, 4-35, 10.1016/j.quaint.2015.06.039, 2015.

863 Holmgren, K., Karlen, W., and Shaw, P. A.: Paleoclimatic Significance of the Stable Isotopic  
864 Composition and Petrology of a Late Pleistocene Stalagmite from Botswana, *Quaternary*  
865 *Res*, 43, 320-328, DOI 10.1006/qres.1995.1038, 1995.

866 Holmgren, K., Lee-Thorp, J. A., Cooper, G. R. J., Lundblad, K., Partridge, T. C., Scott, L., Sithaldeen,  
867 R., Talma, A. S., and Tyson, P. D.: Persistent millennial-scale climatic variability over the past  
868 25,000 years in Southern Africa, *Quaternary Sci Rev*, 22, 2311-2326, 10.1016/S0277-  
869 3791(03)00204-X, 2003.

870 Holzhauser, H., Magny, M., and Zumbuhl, H. J.: Glacier and lake-level variations in west-central  
871 Europe over the last 3500 years, *Holocene*, 15, 789-801, 10.1191/0959683605hl853ra,  
872 2005.

873 Johnson, K. R., Hu, C. Y., Belshaw, N. S., and Henderson, G. M.: Seasonal trace-element and stable-  
874 isotope variations in a Chinese speleothem: The potential for high-resolution  
875 paleomonsoon reconstruction, *Earth Planet Sc Lett*, 244, 394-407,  
876 10.1016/j.epsl.2006.01.064, 2006.

877 Jungers, W. L., Demes, B., and Godfrey, L. R.: How big were the "Giant" extinct lemurs of  
878 Madagascar?, in: *Elwyn Simons: A search for origins*, edited by: Fleagle, J. G., and Gilbert,  
879 C. G., Springer, New York, 343-360, 2008.

880 Jury, M. R.: The Climate of Madagascar, in: *The Natural History of Madagascar*, edited by:  
881 Goodman, S. M., and Benstead, J. P., Chicago: University of Chicago, 75-87, 2003.

882 Kang, S. M., Held, I. M., Frierson, D. M. W., and Zhao, M.: The response of the ITCZ to extratropical  
883 thermal forcing: Idealized slab-ocean experiments with a GCM, *J Climate*, 21, 3521-3532,  
884 10.1175/2007jcli2146.1, 2008.

885 Karmann, I., Cruz, F. W., Viana, O., and Burns, S. J.: Climate influence on geochemistry parameters  
886 of waters from Santana-Perolas cave system, Brazil, *Chem Geol*, 244, 232-247,  
887 10.1016/j.chemgeo.2007.06.029, 2007.

888 Kim, S. T., O'Neil, J. R., Hillaire-Marcel, C., and Mucci, A.: Oxygen isotope fractionation between  
889 synthetic aragonite and water: Influence of temperature and Mg<sup>2+</sup> concentration,  
890 *Geochim Cosmochim Ac*, 71, 4704-4715, 10.1016/J.Gca.2007.04.019, 2007.

891 Kim, S.-T., and O'Neil, J. R.: Equilibrium and nonequilibrium oxygen isotope effects in synthetic  
892 carbonates, *Geochim Cosmochim Ac*, 61, 3461-3475, doi.org/10.1016/S0016-  
893 7037(97)00169-5, 1997.

894 Kleiven, H. F., Kissel, C., Laj, C., Ninnemann, U. S., Richter, T. O., and Cortijo, E.: Reduced North  
895 Atlantic Deep Water coeval with the glacial Lake Agassiz freshwater outburst, *Science*, 319,  
896 60-64, 10.1126/science.1148924, 2008.

897 Konecky, B. L., Russell, J. M., Johnson, T. C., Brown, E. T., Berke, M. A., Werne, J. P., and Huang, Y.  
898 S.: Atmospheric circulation patterns during late Pleistocene climate changes at Lake  
899 Malawi, Africa, *Earth Planet Sc Lett*, 312, 318-326, 10.1016/j.epsl.2011.10.020, 2011.

900 Koutavas, A., deMenocal, P. B., Olive, G. C., and Lynch-Stieglitz, J.: Mid-Holocene El Niño–Southern  
901 Oscillation (ENSO) attenuation revealed by individual foraminifera in eastern tropical  
902 Pacific sediments, *Geology*, 34, 993-996, 10.1130/G22810A.1, 2006.

903 Krishnamurthy, V., and Kirtman, B. P.: Variability of the Indian Ocean: Relation to monsoon and  
904 ENSO, *Q J Roy Meteor Soc*, 129, 1623-1646, 10.1256/qj.01.166, 2003.

905 Kuhnert, H., Kuhlmann, H., Mohtadi, M., Meggers, H., Baumann, K. H., and Patzold, J.: Holocene  
906 tropical western Indian Ocean sea surface temperatures in covariation with climatic  
907 changes in the Indonesian region, *Paleoceanography*, 29, 423-437,  
908 10.1002/2013pa002555, 2014.

909 Kutzbach, J. E., and Liu, Z.: Response of the African Monsoon to Orbital Forcing and Ocean  
910 Feedbacks in the Middle Holocene, *Science*, 278, 440, 1997.

911 Lachniet, M. S., Bernal, J. P., Asmerom, Y., and Polyak, V.: Uranium loss and aragonite-calcite age  
912 discordance in a calcitized aragonite stalagmite, *Quat Geochronol*, 14, 26-37,  
913 10.1016/j.quageo.2012.08.003, 2012.

- 914 Lambert, W. J., and Aharon, P.: Controls on dissolved inorganic carbon and delta C-13 in cave  
915 waters from DeSoto Caverns: Implications for speleothem delta C-13 assessments,  
916 *Geochim Cosmochim Acta*, 75, 753-768, 10.1016/j.gca.2010.11.006, 2011.
- 917 Lee, T., and McPhaden, M. J.: Decadal phase change in large-scale sea level and winds in the Indo-  
918 Pacific region at the end of the 20th century, *Geophys Res Lett*, 35,  
919 10.1029/2007gl032419, 2008.
- 920 Li, T., Wang, B., Chang, C. P., and Zhang, Y. S.: A theory for the Indian Ocean dipole-zonal mode, *J*  
921 *Atmos Sci*, 60, 2119-2135, 10.1175/1520-0469(2003)060<2119:Atftio>2.0.Co;2, 2003.
- 922 Liang, F., Brook, G. A., Kotlia, B. S., Railsback, L. B., Hardt, B., Cheng, H., Edwards, R. L., and  
923 Kandasamy, S.: Panigarh cave stalagmite evidence of climate change in the Indian Central  
924 Himalaya since AD 1256: Monsoon breaks and winter southern jet depressions,  
925 *Quaternary Sci Rev*, 124, 145-161, 2015.
- 926 Lindesay, J. A.: Past Climates of Southern Africa, in: *Climates of the Southern Continents: Present,*  
927 *Past and Future*, edited by: Hobbs, J. E., Lindesay, J. A., and Bridgman, H. A., John Wiley &  
928 Sons Ltd., England, 161-206, 1998.
- 929 Liu, Z., Kutzbach, J., and Wu, L.: Modeling climate shift of El Nino variability in the Holocene,  
930 *Geophys Res Lett*, 27, 2265-2268, 10.1029/2000GL011452, 2000.
- 931 Liu, Y. H., Henderson, G. M., Hu, C. Y., Mason, A. J., Charnley, N., Johnson, K. R., and Xie, S. C.: Links  
932 between the East Asian monsoon and North Atlantic climate during the 8,200 year event,  
933 *Nat Geosci*, 6, 117-120, 10.1038/Ngeo1708, 2013.
- 934 Ljungqvist, F. C.: The Spatio-Temporal Pattern of the Mid-Holocene Thermal Maximum, *Geografie-*  
935 *Prague*, 116, 91-110, 2011.
- 936 Lutjeharms, J. R. E.: *The Agulhas Current*, Springer, 2006.
- 937 MacPhee, R. D. E., and Burney, D. A.: Dating of Modified Femora of Extinct Dwarf Hippopotamus  
938 from Southern Madagascar - Implications for Constraining Human Colonization and  
939 Vertebrate Extinction Events, *J Archaeol Sci*, 18, 695-706, Doi 10.1016/0305-  
940 4403(91)90030-S, 1991.

941 Mann, M. E., Bradley, R. S., and Hughes, M. K.: Northern hemisphere temperatures during the past  
 942 millennium: Inferences, uncertainties, and limitations, *Geophys Res Lett*, 26, 759-762,  
 943 10.1029/1999GL900070, 1999.

944 Mann, M. E., Bradley, R. S., and Hughes, M. K.: Global-scale temperature patterns and climate  
 945 forcing over the past six centuries, *Nature*, 392, 779-787, 1998.

946 Marcott, S. A., Shakun, J. D., Clark, P. U., and Mix, A. C.: A Reconstruction of Regional and Global  
 947 Temperature for the Past 11,300 Years, *Science*, 339, 1198, 2013.

948 Matsumoto, K., and Burney, D. A.: Late Holocene environments at Lake Mitsinjo, northwestern  
 949 Madagascar, *The Holocene*, 4, 16-24, 1994.

950 Mayewski, P. A., Rohling, E. E., Stager, J. C., Karlen, W., Maasch, K. A., Meeker, L. D., Meyerson, E.  
 951 A., Gasse, F., van Kreveland, S., Holmgren, K., Lee-Thorp, J., Rosqvist, G., Rack, F.,  
 952 Staubwasser, M., Schneider, R. R., and Steig, E. J.: Holocene climate variability, *Quaternary*  
 953 *Res*, 62, 243-255, Doi 10.1016/J.Yqres.2004.07.001, 2004.

954 McDonald, J., Drysdale, R., Hill, D., Chisari, R., and Wong, H.: The hydrochemical response of cave  
 955 drip waters to sub-annual and inter-annual climate variability, Wombeyan Caves, SE  
 956 Australia, *Chem Geol*, 244, 605-623, 2007.

957 McGee, D., Donohoe, A., Marshall, J., and Ferreira, D.: Changes in ITCZ location and cross-  
 958 equatorial heat transport at the Last Glacial Maximum, Heinrich Stadial 1, and the mid-  
 959 Holocene, *Earth Planet Sc Lett*, 390, 69-79, 10.1016/J.Epsl.2013.12.043, 2014.

960 McMillan, E. A., Fairchild, I. J., Frisia, S., Borsato, A., and McDermott, F.: Annual trace element  
 961 cycles in calcite-aragonite speleothems: evidence of drought in the western  
 962 Mediterranean 1200-1100 yr BP, *J Quaternary Sci*, 20, 423-433, 10.1002/jqs.943, 2005.

963 Meyers, G., McIntosh, P., Pigot, L., and Pook, M.: The Years of El Niño, La Niña, and Interactions  
 964 with the Tropical Indian Ocean, *J Climate*, 20, 2872-2880, 10.1175/JCLI4152.1, 2007.

965 Middleton, J., and Middleton, V.: Karst and caves of Madagascar, *Cave and Karst Science*, 29, 13-  
 966 20, 2002.

967 Moy, C. M., Seltzer, G. O., Rodbell, D. T., and Anderson, D. M.: Variability of El Nino/Southern  
 968 Oscillation activity at millennial timescales during the Holocene epoch, *Nature*, 420, 162-  
 969 165, 2002.

- 970 [Murray, J. W.: The deposition of calcite and aragonite in caves., J Geol, 62, 481-492, 1954.](#)
- 971 [Nassor, A., and Jury, M. R.: Intra-seasonal climate variability of Madagascar. Part 1: Mean summer](#)
- 972 [conditions, Meteorol Atmos Phys, 65, 31-41, Doi 10.1007/Bf01030267, 1998.](#)
- 973 [Nicholson, S.E.: Environmental change within the historical period, in: The Physical Geography of](#)
- 974 [Africa, Goudie, A.S., Adams, W.M., Orme, A. \(Eds.\), Oxford University Press, Oxford, 60–75,](#)
- 975 [1996.](#)
- 976 [Niggemann, S., Mangini, A., Mudelsee, M., Richter, D. K., and Wurth, G.: Sub-Milankovitch climatic](#)
- 977 [cycles in Holocene stalagmites from Sauerland, Germany, Earth Planet Sc Lett, 216, 539-](#)
- 978 [547, Doi 10.1016/S0012-821x\(03\)00513-2, 2003.](#)
- 979 [Otto-Bliesner, B. L., Brady, E. C., Shin, S.-I., Liu, Z., and Shields, C.: Modeling El Niño and its tropical](#)
- 980 [teleconnections during the last glacial-interglacial cycle, Geophys Res Lett, 30, n/a-n/a,](#)
- 981 [10.1029/2003GL018553, 2003.](#)
- 982 [Partridge, T. C., Demenocal, P. B., Lorentz, S. A., Paiker, M. J., and Vogel, J. C.: Orbital forcing of](#)
- 983 [climate over South Africa: A 200,000-year rainfall record from the Pretoria saltpan,](#)
- 984 [Quaternary Sci Rev, 16, 1125-1133, 1997.](#)
- 985 [Paul, D., and Skrzypek, G.: Assessment of carbonate-phosphoric acid analytical technique](#)
- 986 [performed using GasBench II in continuous flow isotope ratio mass spectrometry, Int J](#)
- 987 [Mass Spectrom, 262, 180-186, 10.1016/j.ijms.2006.11.006, 2007.](#)
- 988 [Perrin, C., Prestimonaco, L., Servelle, G., Tilhac, R., Maury, M., and Cabrol, P.: Aragonite–calcite](#)
- 989 [speleothems: identifying original and diagenetic features, J Sediment Res, 84, 245-269,](#)
- 990 [2014.](#)
- 991 [Pobeguín, T.: Sur les concrétions calcaires observés dans la Grotte de Moulis \(Ariège\), Société](#)
- 992 [Géologique de la France, Compte Rendus, 241, 1791-1793, 1965.](#)
- 993 [Qiu, Y., Cai, W., Li, L., and Guo, X.: Argo profiles variability of barrier layer in the tropical Indian](#)
- 994 [Ocean and its relationship with the Indian Ocean Dipole, Geophys Res Lett, 39, n/a-n/a,](#)
- 995 [10.1029/2012GL051441, 2012.](#)
- 996 [Railsback, L. B., Akers, P. D., Wang, L. X., Holdridge, G. A., and Voarintsoa, N. R.: Layer-bounding](#)
- 997 [surfaces in stalagmites as keys to better paleoclimatological histories and chronologies,](#)
- 998 [International Journal of Speleology, 42, 167-180, 10.5038/1827-806x.42.3.1, 2013.](#)



999 Railsback, L. B., Brook, G. A., Chen, J., Kalin, R., and Fleisher, C. J.: Environmental Controls on the  
1000 Petrology of a Late Holocene Speleothem from Botswana with annual layers of aragonite  
1001 and calcite, *J Sediment Res A*, 64, 147-155, 1994.

1002 Railsback, L. B., Brook, G. A., Ellwood, B. B., Liang, F., Cheng, H., and Edwards, R. L.: A record of wet  
1003 glacial stages and dry interglacial stages over the last 560kyr from a standing massive  
1004 stalagmite in Carlsbad Cavern, New Mexico, USA, *Palaeogeography, Palaeoclimatology,*  
1005 *Palaeoecology*, 438, 256-266, <http://dx.doi.org/10.1016/j.palaeo.2015.08.010>, 2015.

1006 Railsback, L. B., Brook, G. A., Liang, F., Marais, E., Cheng, H., and Edwards, R. L.: A multi-proxy  
1007 stalagmite record from northwestern Namibia of regional drying with increasing global-  
1008 scale warmth over the last 47kyr: The interplay of a globally shifting ITCZ with regional  
1009 currents, winds, and rainfall, *Palaeogeography, Palaeoclimatology, Palaeoecology*, 461,  
1010 109-121, 2016.

1011 Railsback, L. B., Xiao, H. L., Liang, F. Y., Akers, P. D., Brook, G. A., Dennis, W. M., Lanier, T. E., Tan,  
1012 M., Cheng, H., and Edwards, R. L.: A stalagmite record of abrupt climate change and  
1013 possible Westerlies-derived atmospheric precipitation during the Penultimate Glacial  
1014 Maximum in northern China, *Palaeogeogr Palaeocl*, 393, 30-44, [Doi 10.1016/J.Palaeo.2013.10.013](https://doi.org/10.1016/J.Palaeo.2013.10.013), 2014.

1016 Railsback, L.B.: Atlas of speleothem microfabrics. Available at. [www.gly.uga.edu/railsback/speleoatlas/SAindex1.html](http://www.gly.uga.edu/railsback/speleoatlas/SAindex1.html), 2000.

1018 Renssen, H., Goosse, H., Fichefet, T., and Campin, J. M.: The 8.2 kyr BP event simulated by a Global  
1019 Atmosphere—Sea-Ice—Ocean Model, *Geophys Res Lett*, 28, 1567-1570,  
1020 [10.1029/2000GL012602](https://doi.org/10.1029/2000GL012602), 2001.

1021 Renssen, H., Goosse, H., Crosta, X., and Roche, D. M.: Early Holocene Laurentide Ice Sheet  
1022 deglaciation causes cooling in the high-latitude Southern Hemisphere through oceanic  
1023 teleconnection, *Paleoceanography*, 25, PA3204, [doi10.1029/2009pa001854](https://doi.org/10.1029/2009pa001854), 2010.

1024 Romanek, C. S., Grossman, E. L., and Morse, J. W.: Carbon Isotopic Fractionation in Synthetic  
1025 Aragonite and Calcite - Effects of Temperature and Precipitation Rate, *Geochim*  
1026 *Cosmochim Ac*, 56, 419-430, [Doi 10.1016/0016-7037\(92\)90142-6](https://doi.org/10.1016/0016-7037(92)90142-6), 1992.

- 1027 [Rubinson, M., and Clayton, R. N.: Carbon-13 fractionation between aragonite and calcite, \*Geochim\*](#)
- 1028 [Cosmochim Ac, 33, 997-1002, 1969.](#)
- 1029 [Sachs, J. P., Sachse, D., Smittenberg, R. H., Zhang, Z., Battisti, D. S., and Golubic, S.: Southward](#)
- 1030 [movement of the Pacific intertropical convergence zone AD\[thinsp\]1400-1850, \*Nature\*](#)
- 1031 [Geosci, 2, 519-525, 2009.](#)
- 1032 [Saint-Ours, J. D.: Les phénomènes karstiques à Madagascar, \*Annales de Spéléologie\*, 14, 275-291,](#)
- 1033 [1959.](#)
- 1034 [Saji, N. H., and Yamagata, T.: Possible impacts of Indian Ocean Dipole mode events on global](#)
- 1035 [climate, \*Clim Res\*, 25, 151-169, Doi 10.3354/Cr025151, 2003.](#)
- 1036 [Saji, N. H., Goswami, B. N., Vinayachandran, P. N., and Yamagata, T.: A dipole mode in the tropical](#)
- 1037 [Indian Ocean, \*Nature\*, 401, 360-363, 10.1038/43855, 1999.](#)
- 1038 [Schefuß, E., Kuhlmann, H., Mollenhauer, G., Prange, M., and Patzold, J.: Forcing of wet phases in](#)
- 1039 [southeast Africa over the past 17,000 years, \*Nature\*, 480, 509-512, DOI](#)
- 1040 [10.1038/nature10685, 2011.](#)
- 1041 [Schefuß, E., Schouten, S., and Schneider, R. R.: Climatic controls on central African hydrology](#)
- 1042 [during the past 20,000\[thinsp\]years, \*Nature\*, 437, 1003-1006, 2005.](#)
- 1043 [Schneider, T., Bischoff, T., and Haug, G. H.: Migrations and dynamics of the intertropical](#)
- 1044 [convergence zone, \*Nature\*, 513, 45-53, 10.1038/Nature13636, 2014.](#)
- 1045 [Scholz, D., Tolzmann, J., Hoffmann, D. L., Jochum, K. P., Spötl, C., and Riechelmann, D. F. C.:](#)
- 1046 [Diagenesis of speleothems and its effect on the accuracy of 230Th/U-ages, \*Chem Geol\*,](#)
- 1047 [387, 74-86, 2014.](#)
- 1048 [Scholz, D., and Hoffmann, D. L.: StalAge - An algorithm designed for construction of speleothem](#)
- 1049 [age models, \*Quat Geochronol\*, 6, 369-382, 10.1016/j.quageo.2011.02.002, 2011.](#)
- 1050 [Scholz, D., Hoffmann, D. L., Hellstrom, J., and Ramsey, C. B.: A comparison of different methods](#)
- 1051 [for speleothem age modelling, \*Quat Geochronol\*, 14, 94-104,](#)
- 1052 [10.1016/j.quageo.2012.03.015, 2012.](#)
- 1053 [Schott, F. A., Xie, S. P., and McCreary, J. P.: Indian Ocean Circulation and Climate Variability, \*Rev\*](#)
- 1054 [Geophys, 47, 10.1029/2007rg000245, 2009.](#)

1055 Scott, L.: Vegetation history and climate in the Savanna biome South Africa since 190,000 ka: a  
 1056 comparison of pollen data from the Tswaing Crater (the Pretoria Saltpan) and  
 1057 Wonderkrater, *Quatern Int*, 57, 215-223, 1999.

1058 Scott, L., Thackeray, J.F.: Multivariate analysis of Late Pleistocene and Holocene pollen spectra  
 1059 from Wonderkrater, Transvaal, South Africa. *S Afr J Sci*, 83, 93–98. 1987.

1060 Scropton, N., Burns, S. J., McGee, D., Hardt, B., Godfrey, L. R., Ranivoharimanana, L., and Faina, P.:  
 1061 Hemispherically in-phase precipitation variability over the last 1700 years in a Madagascar  
 1062 speleothem record, *Quaternary Sci Rev*, 164, 25-36, 10.1016/j.quascirev.2017.03.017,  
 1063 2017.

1064 Seltzer, G., Rodbell, D., and Burns, S. J.: Isotopic evidence for Late Glacial and Holocene hydrologic  
 1065 change in tropical South America. *Geology*, 28, 35-38, 2000.

1066 Shen, C.-C., Lawrence Edwards, R., Cheng, H., Dorale, J. A., Thomas, R. B., Bradley Moran, S.,  
 1067 Weinstein, S. E., and Edmonds, H. N.: Uranium and thorium isotopic and concentration  
 1068 measurements by magnetic sector inductively coupled plasma mass spectrometry, *Chem*  
 1069 *Geol*, 185, 165-178, 2002.

1070 Shinoda, T., Alexander, M. A., and Hendon, H. H.: Remote Response of the Indian Ocean to  
 1071 Interannual SST Variations in the Tropical Pacific, *J Climate*, 17, 362-372, 10.1175/1520-  
 1072 0442(2004)017<0362:RROTIO>2.0.CO;2, 2004.

1073 Shtober-Zisu, N., Schwarcz, H. P., Konyer, N., Chow, T., and Noseworthy, M. D.: Macroholes in  
 1074 stalagmites and the search for lost water, *J Geophys Res-Earth*, 117, F03020, Doi  
 1075 10.1029/2011jf002288, 2012.

1076 Siegel, F. R.: Aspects of calcium carbonate deposition in Great Onyx Cave, Kentucky,  
 1077 *Sedimentology*, 4, 285–299, 1965.

1078 Singarayer, J. S., and Burrough, S. L.: Interhemispheric dynamics of the African rainbelt during the  
 1079 late Quaternary, *Quaternary Sci Rev*, 124, 48-67, 2015.

1080 Skrzypek, G., and Paul, D.: Delta C-13 analyses of calcium carbonate: comparison between the  
 1081 GasBench and elemental analyzer techniques, *Rapid Commun Mass Sp*, 20, 2915-2920,  
 1082 10.1002/rcm.2688, 2006.

Comment [NRG31]: Citation corrected

1083 Sletten, H. R., Railsback, L. B., Liang, F. Y., Brook, G. A., Marais, E., Hardt, B. F., Cheng, H., and  
 1084 Edwards, R. L.: A petrographic and geochemical record of climate change over the last 4600  
 1085 years from a northern Namibia stalagmite, with evidence of abruptly wetter climate at the  
 1086 beginning of southern Africa's Iron Age, *Palaeogeogr Palaeocl*, 376, 149-162, Doi  
 1087 10.1016/J.Palaeo.2013.02.030, 2013.

1088 Sonzogni, C., Bard, E., and Rostek, F.: Tropical sea-surface temperatures during the last glacial  
 1089 period: a view based on alkenones in Indian Ocean sediments, *Quaternary Sci Rev*, 17,  
 1090 1185-1201, [http://dx.doi.org/10.1016/S0277-3791\(97\)00099-1](http://dx.doi.org/10.1016/S0277-3791(97)00099-1), 1998.

1091 Stuiver, M., Reimer, P. J., Bard, E., Beck, J. W., Burr, G. S., Hughen, K. A., Kromer, B., McCormac,  
 1092 G., Van der Plicht, J., and Spurk, M.: INTCAL98 radiocarbon age calibration, 24,000-0 cal  
 1093 BP, *Radiocarbon*, 40, 1041-1083, 1998.

1094 Suzuki, T.: Seasonal variation of the ITCZ and its characteristics over central Africa, *Theor Appl*  
 1095 *Climatol*, 103, 39-60, 10.1007/s00704-010-0276-9, 2011.

1096 Talento, S., and Barreiro, M.: Simulated sensitivity of the tropical climate to extratropical thermal  
 1097 forcing: tropical SSTs and African land surface, *Clim Dynam*, 47, 1091-1110,  
 1098 10.1007/s00382-015-2890-9, 2016.

1099 Tarutani, T., Clayton, R. N., and Mayeda, T. K.: The effect of polymorphism and magnesium  
 1100 substitution on oxygen isotope fractionation between calcium carbonate and water,  
 1101 *Geochim Cosmochim Ac*, 33, 987-996, [http://dx.doi.org/10.1016/0016-7037\(69\)90108-2](http://dx.doi.org/10.1016/0016-7037(69)90108-2),  
 1102 1969.

1103 Thomas, D. S. G., Bailey, R., Shaw, P. A., Durcan, J. A., and Singarayer, J. S.: Late Quaternary  
 1104 highstands at Lake Chilwa, Malawi: Frequency, timing and possible forcing mechanisms in  
 1105 the last 44ka, *Quaternary Sci Rev*, 28, 526-539, 2009.

1106 Thomas, E. R., Wolff, E. W., Mulvaney, R., Steffensen, J. P., Johnsen, S. J., Arrowsmith, C., White, J.  
 1107 W. C., Vaughn, B., and Popp, T.: The 8.2ka event from Greenland ice cores, *Quaternary Sci*  
 1108 *Rev*, 26, 70-81, <http://dx.doi.org/10.1016/j.quascirev.2006.07.017>, 2007.

1109 Thornalley, D. J. R., Elderfield, H., and McCave, I. N.: Holocene oscillations in temperature and  
 1110 salinity of the surface subpolar North Atlantic, *Nature*, 457, 711-714,  
 1111 10.1038/nature07717, 2009.

- 1112 Thrailkill, J.: Carbonate Deposition in Carlsbad Caverns, *J Geol*, 79, 683-695, 1971.
- 1113 Tierney, J. E., Smerdon, J. E., Anchukaitis, K. J., and Seager, R.: Multidecadal variability in East  
1114 African hydroclimate controlled by the Indian Ocean, *Nature*, 493, 389-392, 2013.
- 1115 Tierney, J. E., and deMenocal, P. B.: Abrupt Shifts in Horn of Africa Hydroclimate Since the Last  
1116 Glacial Maximum, *Science*, 342, 843, 2013.
- 1117 Tierney, J. E., Russell, J. M., and Huang, Y.: A molecular perspective on Late Quaternary climate  
1118 and vegetation change in the Lake Tanganyika basin, East Africa, *Quaternary Sci Rev*, 29,  
1119 787-800, <http://dx.doi.org/10.1016/j.quascirev.2009.11.030>, 2010.
- 1120 Tierney, J. E., Russell, J. M., Huang, Y., Damsté, J. S. S., Hopmans, E. C., and Cohen, A. S.: Northern  
1121 Hemisphere Controls on Tropical Southeast African Climate During the Past 60,000 Years,  
1122 *Science*, 322, 252, 2008.
- 1123 Timmermann, A., Lorenz, S. J., An, S. I., Clement, A., and Xie, S. P.: The Effect of Orbital Forcing on  
1124 the Mean Climate and Variability of the Tropical Pacific, *J Climate*, 20, 4147-4159,  
1125 10.1175/JCLI4240.1, 2007.
- 1126 Truc, L., Chevalier, M., Favier, C., Cheddadi, R., Meadows, M. E., Scott, L., Carr, A. S., Smith, G. F.,  
1127 and Chase, B. M.: Quantification of climate change for the last 20,000years from  
1128 Wonderkrater, South Africa: Implications for the long-term dynamics of the Intertropical  
1129 Convergence Zone, *Palaeogeography, Palaeoclimatology, Palaeoecology*, 386, 575-587,  
1130 2013.
- 1131 Tudhope, A. W., Chilcott, C. P., McCulloch, M. T., Cook, E. R., Chappell, J., Ellam, R. M., Lea, D. W.,  
1132 Lough, J. M., and Shimmield, G. B.: Variability in the El Niño-Southern Oscillation Through  
1133 a Glacial-Interglacial Cycle, *Science*, 291, 1511, 2001.
- 1134 Vasey, N., Burney, D. A., and Godfrey, L.: Coprolites associated with *Archaeolemur* remains in  
1135 North-western Madagascar suggest dietary diversity and cave use in a subfossil prosimian,  
1136 in: *Leaping Ahead: Advances in Prosimian Biology*, edited by: Masters, J., Gamba, M., and  
1137 Génin, F., Springer, New York, NY, 149–156, 2013.
- 1138 Vecchi, G. A., and Soden, B. J.: Global Warming and the Weakening of the Tropical Circulation, *J*  
1139 *Climate*, 20, 4316-4340, 10.1175/JCLI4258.1, 2007.

1140 Vellinga, M., and Wood, R. A.: Global climatic impacts of a collapse of the Atlantic thermohaline  
1141 circulation, *Climatic Change*, 54, 251-267, Doi 10.1023/A:1016168827653, 2002.

1142 Venzke, S., Latif, M., and Villwock, A.: The Coupled GCM ECHO-2, *J Climate*, 13, 1371-1383,  
1143 10.1175/1520-0442(2000)013<1371:TCGE>2.0.CO;2, 2000.

1144 Verschuren, D., Sinninghe Damste, J. S., Moernaut, J., Kristen, I., Blaauw, M., Fagot, M., and Haug,  
1145 G. H.: Half-precessional dynamics of monsoon rainfall near the East African Equator,  
1146 *Nature*, 462, 637-641, 2009.

1147 Vinther, B. M., Buchardt, S. L., Clausen, H. B., Dahl-Jensen, D., Johnsen, S. J., Fisher, D. A., Koerner,  
1148 R. M., Raynaud, D., Lipenkov, V., Andersen, K. K., Blunier, T., Rasmussen, S. O., Steffensen,  
1149 J. P., and Svensson, A. M.: Holocene thinning of the Greenland ice sheet, *Nature*, 461, 385-  
1150 388, 10.1038/nature08355, 2009.

1151 Virah-Sawmy, M., Willis, K. J., and Gillson, L.: Evidence for drought and forest declines during the  
1152 recent megafaunal extinctions in Madagascar, *Journal of Biogeography*, 37, 506-519, Doi  
1153 10.1111/J.1365-2699.2009.02203.X, 2010.

1154 Virah-Sawmy, M., Willis, K. J., and Gillson, L.: Threshold response of Madagascar's littoral forest to  
1155 sea-level rise, *Global Ecol Biogeogr*, 18, 98-110, 10.1111/j.1466-8238.2008.00429.x, 2009.

1156 Voarintsoa, N. R. G., Brook, G. A., Liang, F., Marais, E., Hardt, B., Cheng, H., Edwards, R. L., and  
1157 Railsback, L. B.: Stalagmite multi-proxy evidence of wet and dry intervals in northeastern  
1158 Namibia: linkage to latitudinal shifts of the Inter-Tropical Convergence Zone and changing  
1159 solar activity from AD 1400 to 1950, *The Holocene*, In press, 1-13,  
1160 doi:10.1177/0959683616660170, 2017a.

1161 Voarintsoa, N.R.G., Wang, L., Bruce Railsback, L., Brook, G.A., Liang, F., Cheng, H., Lawrence  
1162 Edwards, R.: Multiple proxy analyses of a U/Th-dated stalagmite to reconstruct  
1163 paleoenvironmental changes in northwestern Madagascar between 370 CE and 1300 CE.  
1164 *Palaeogeography, Palaeoclimatology, Palaeoecology* 469, 138-155, 2017b.

1165 Walker, M. J. C., Berkelhammer, M., Björck, S., Cwynar, L. C., Fisher, D. A., Long, A. J., Lowe, J. J.,  
1166 Newnham, R. M., Rasmussen, S. O., and Weiss, H.: Formal subdivision of the Holocene  
1167 Series/Epoch: a Discussion Paper by a Working Group of INTIMATE (Integration of ice-core,  
1168 marine and terrestrial records) and the Subcommission on Quaternary Stratigraphy

1169 (International Commission on Stratigraphy), *J Quaternary Sci*, 27, 649-659,  
 1170 10.1002/jqs.2565, 2012.

1171 Wang, L.: Late Quaternary paleoenvironmental changes in Southern Africa and Madagascar:  
 1172 evidence from aeolian, fluvial, and cave deposits, Unpub dissertation. University of  
 1173 Georgia, Athens, Georgia, 312pp, 2016.

1174 Wang, L., Brook, G.A., 2013. Holocene Climate Changes in Northwest Madagascar: Evidence From  
 1175 a Two-meter-long Stalagmite From the Anjohibe Cave, Meeting Program of the Association  
 1176 of American Geographers, Published Online. Session 1512: Paleorecords of our Changing  
 1177 Earth I: Climate History and Human-Environment Interaction in the Old and New World  
 1178 Tropics, 2013.

1179 Wang, X., Auler, A. S., Edwards, R. L., Cheng, H., Ito, E., Wang, Y., Kong, X., and Solheid, M.:  
 1180 Millennial-scale precipitation changes in southern Brazil over the past 90,000 years,  
 1181 *Geophys Res Lett*, 34, n/a-n/a, 10.1029/2007GL031149, 2007.

1182 Wang, Y. J., Cheng, H., Edwards, R. L., He, Y. Q., Kong, X. G., An, Z. S., Wu, J. Y., Kelly, M. J., Dykoski,  
 1183 C. A., and Li, X. D.: The Holocene Asian monsoon: Links to solar changes and North Atlantic  
 1184 climate, *Science*, 308, 854-857, 10.1126/science.1106296, 2005.

1185 Wanner, H., and Ritz, S. P.: A web-based Holocene Climate Atlas (HOCLAT):  
 1186 [http://www.oeschger.unibe.ch/research/projects/holocene\\_atlas/](http://www.oeschger.unibe.ch/research/projects/holocene_atlas/), 2011.

1187 Wanner, H., Beer, J., Butikofer, J., Crowley, T. J., Cubasch, U., Fluckiger, J., Goosse, H., Grosjean,  
 1188 M., Joos, F., Kaplan, J. O., Kuttel, M., Muller, S. A., Prentice, I. C., Solomina, O., Stocker, T.  
 1189 F., Tarasov, P., Wagner, M., and Widmann, M.: Mid- to Late Holocene climate change: an  
 1190 overview, *Quaternary Sci Rev*, 27, 1791-1828, 10.1016/j.quascirev.2008.06.013, 2008.

1191 Wanner, H., Mercolli, L., Grosjean, M., and Ritz, S. P.: Holocene climate variability and change; a  
 1192 data-based review, *J Geol Soc London*, 172, 254-263, 10.1144/jgs2013-101, 2015.

1193 Wanner, H., Solomina, O., Grosjean, M., Ritz, S. P., and Jetel, M.: Structure and origin of Holocene  
 1194 cold events, *Quaternary Sci Rev*, 30, 3109-3123, 10.1016/j.quascirev.2011.07.010, 2011.

1195 Weaver, A. J., Bitz, C. M., Fanning, A. F., and Holland, M. M.: Thermohaline circulation: High-  
 1196 latitude phenomena and the difference between the Pacific and Atlantic, *Annual Review*  
 1197 *of Earth and Planetary Sciences*, 27, 231-285, DOI 10.1146/annurev.earth.27.1.231, 1999.

- 1198 Webster, P. J., Moore, A. M., Loschnigg, J. P., and Leben, R. R.: Coupled ocean-atmosphere  
1199 dynamics in the Indian Ocean during 1997-98, *Nature*, 401, 356-360, 1999.
- 1200 Weldeab, S., Lea, D. W., Schneider, R. R., and Andersen, N.: 155,000 Years of West African  
1201 Monsoon and Ocean Thermal Evolution, *Science*, 316, 1303, 2007.
- 1202 Weller, E., and Cai, W. J.: Meridional variability of atmospheric convection associated with the  
1203 Indian Ocean Dipole Mode, *Sci Rep-Uk*, 4, Doi 10.1038/Srep03590, 2014.
- 1204 Wiersma, A. P., and Renssen, H.: Model-data comparison for the 8.2kaBP event: confirmation of  
1205 a forcing mechanism by catastrophic drainage of Laurentide Lakes, *Quaternary Sci Rev*, 25,  
1206 63-88, <http://dx.doi.org/10.1016/j.quascirev.2005.07.009>, 2006.
- 1207 Wiersma, A. P., Roche, D. M., and Renssen, H.: Fingerprinting the 8.2 ka event climate response in  
1208 a coupled climate model, *J Quaternary Sci*, 26, 118-127, 10.1002/jqs.1439, 2011.
- 1209 Williamson, D., Jelinowska, A., Kissel, C., Tucholka, P., Gibert, E., Gasse, F., Massault, M., Taieb, M.,  
1210 Van Campo, E., and Wieckowski, K.: Mineral-magnetic proxies of erosion/oxidation cycles  
1211 in tropical maar-lake sediments (Lake Tritrivakely, Madagascar): paleoenvironmental  
1212 implications, *Earth Planet Sc Lett*, 155, 205-219, [http://dx.doi.org/10.1016/S0012-](http://dx.doi.org/10.1016/S0012-821X(97)00217-3)  
1213 [821X\(97\)00217-3](http://dx.doi.org/10.1016/S0012-821X(97)00217-3), 1998.
- 1214 Yamagata, T., Behera, S. K., Luo, J. J., Masson, S., Jury, M. R., and Rao, S. A.: Coupled ocean-  
1215 atmosphere variability in the tropical Indian Ocean: Earth's Climate, *The Ocean-*  
1216 *Atmosphere Interaction*, 147, 189-211, 2004.
- 1217 Yan, H., Wei, W., Soon, W., An, Z., Zhou, W., Liu, Z., Wang, Y., and Carter, R. M.: Dynamics of the  
1218 intertropical convergence zone over the western Pacific during the Little Ice Age, *Nature*  
1219 *Geosci*, 8, 315-320, 10.1038/ngeo2375, 2015.
- 1220 Zhang, H.-L., Yu, K.-F., Zhao, J.-X., Feng, Y.-X., Lin, Y.-S., Zhou, W., and Liu, G.-H.: East Asian Summer  
1221 Monsoon variations in the past 12.5ka: High-resolution  $\delta^{18}\text{O}$  record from a precisely dated  
1222 aragonite stalagmite in central China, *J Asian Earth Sci*, 73, 162-175, 2013.
- 1223 Zhang, H., Cai, Y., Tan, L., Qin, S., and An, Z.: Stable isotope composition alteration produced by  
1224 the aragonite-to-calcite transformation in speleothems and implications for paleoclimate  
1225 reconstructions, *Sediment Geol*, 309, 1-14, 2014.



- 1226 Zhang, R., and Delworth, T. L.: Simulated tropical response to a substantial weakening of the  
1227 Atlantic thermohaline circulation, *J Climate*, 18, 1853-1860, Doi 10.1175/Jcli3460.1, 2005.
- 1228 Zheng, W., Braconnot, P., Guilyardi, E., Merkel, U., and Yu, Y.: ENSO at 6ka and 21ka from ocean–  
1229 atmosphere coupled model simulations, *Clim Dynam*, 30, 745-762, 10.1007/s00382-007-  
1230 0320-3, 2008.
- 1231 Zheng, X.-T., Xie, S.-P., Du, Y., Liu, L., Huang, G., and Liu, Q.: Indian Ocean Dipole Response to Global  
1232 Warming in the CMIP5 Multimodel Ensemble, *J Climate*, 26, 6067-6080, 10.1175/JCLI-D-  
1233 12-00638.1, 2013.
- 1234 Zinke, J., Dullo, W. C., Heiss, G. A., and Eisenhauer, A.: ENSO and Indian Ocean subtropical dipole  
1235 variability is recorded in a coral record off southwest Madagascar for the period 1659 to  
1236 1995, *Earth Planet Sc Lett*, 228, 177-194, 10.1016/j.epsl.2004.09.028, 2004.

Figures

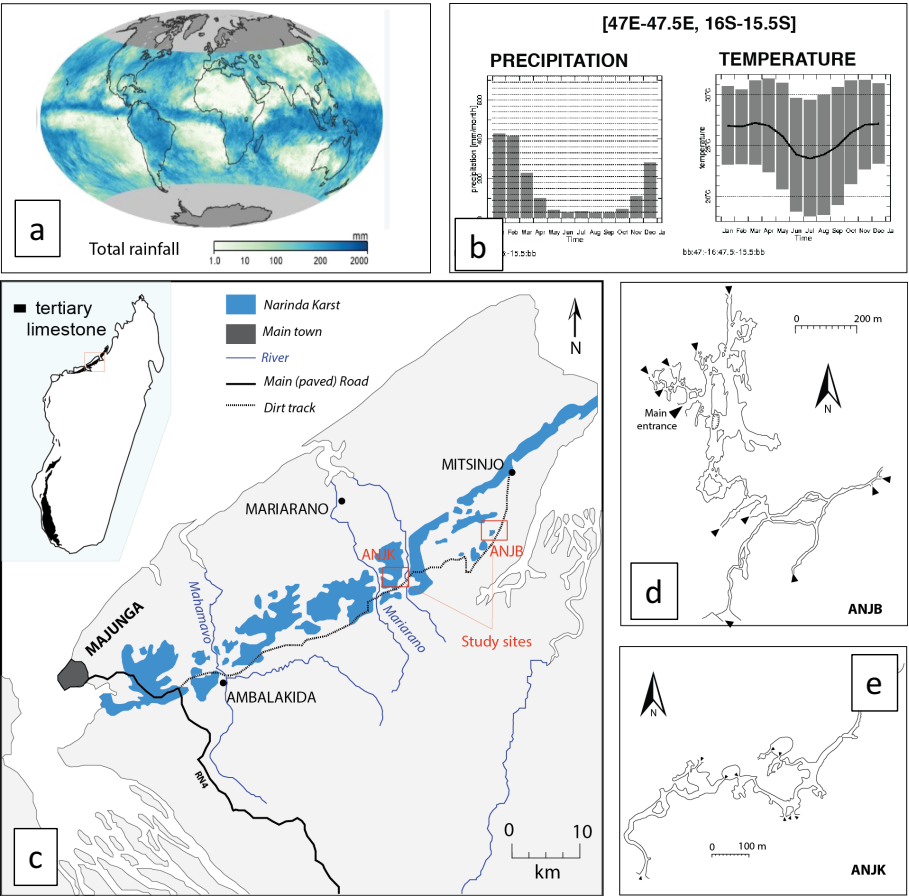
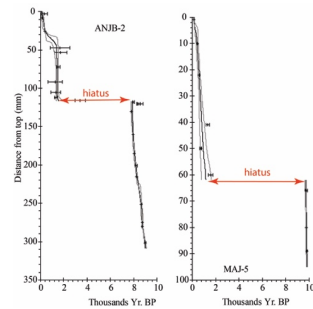


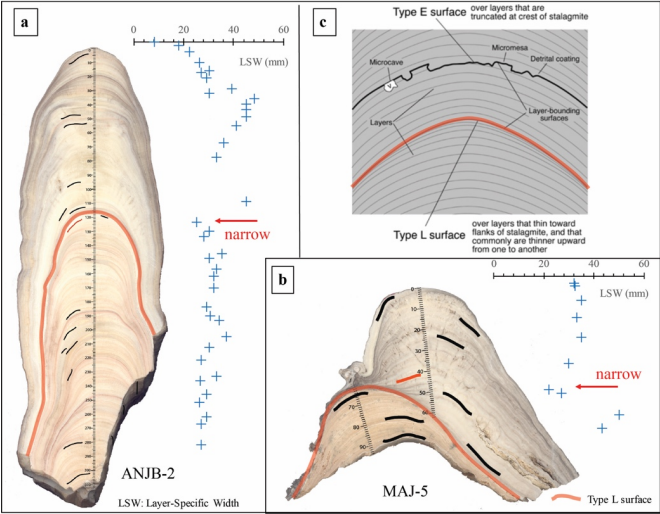
Figure 1: Climatological and geographic setting of Madagascar and the study area. (a) Global rainfall maps recorded by NASA's Tropical Rainfall Measuring Mission (TRMM) satellite showing the total monthly rainfall in millimeters and the overall position of the ITCZ during November, 2006. Darker blue shades indicate regions of higher rainfall (source: NASA Earth Observatory, 2016). (b) Barplots of the monthly climatology of precipitation, and the monthly average of daily maximum, minimum, and mean temperature in NW Madagascar. The base period used for the climatology is 1971-2000. Source: <http://iridl.ldeo.columbia.edu/> (accessed August 31, 2016). (c)

1246 Simplified map showing the southwest part of the Narinda karst and the location of the study  
 1247 areas. Inset figure is a map of Madagascar showing the extent of the Tertiary limestone cover that  
 1248 makes up the Narinda karst. (d-e) Maps of Anjohibe (ANJB) and Anjokipoty (ANJK) caves (St-Ours,  
 1249 1959; Middleton and Middleton, 2002). See Figs. S1–S3 for additional information about the study  
 1250 locations.



1252 Figure 2: Age model of Stalagmite ANJB-2 and MAJ-5 using the StalAge1.0 algorithm of Scholz and  
 1253 Hoffman (2011) and Scholz et al. (2012).  
 1254

1256

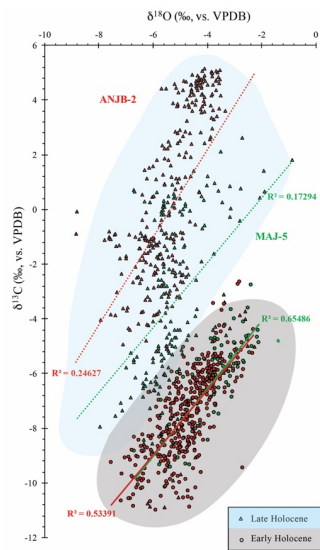


1257

1258

1259 Figure 3: a) Scanned image of Stalagmite ANJB-2 and the corresponding variations in layer-specific  
1260 width (LSW). b) Scanned image of Stalagmite MAJ-5 and the corresponding layer-specific width  
1261 (LSW). c) Sketches of typical layer-bounding surfaces (Type E and Type L) of Railsback et al. (2013).  
1262 Close-up of photographs of the hiatuses are shown in Fig S6.

1263



**Figure 4: Stable isotope data.** Scatterplots of  $\delta^{13}\text{C}$  and  $\delta^{18}\text{O}$  for Stalagmite MAJ-5 (green) and ANJB-2 (red) during the Malagasy early Holocene interval (circle) and the Malagasy late Holocene interval (triangle). The plot shows distinctive early and late Holocene conditions (roughly highlighted in gray and light blue shade, respectively).

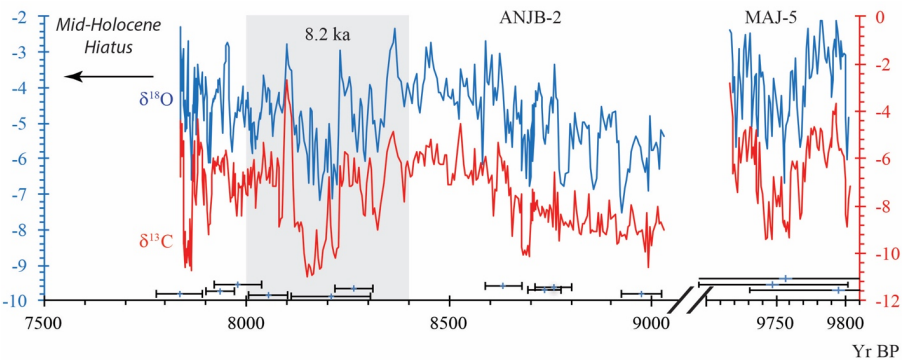


Figure 5: Variations in  $\delta^{13}\text{C}$  and  $\delta^{18}\text{O}$  in Stalagmite ANJB-2 and Stalagmite MAJ-5 during the Malagasy Early Holocene Interval. Supplementary Fig. S6 shows both the corrected and uncorrected values.

Comment [NRG32]: Previous times series were all updated in response to RC1, RC2, and SL.

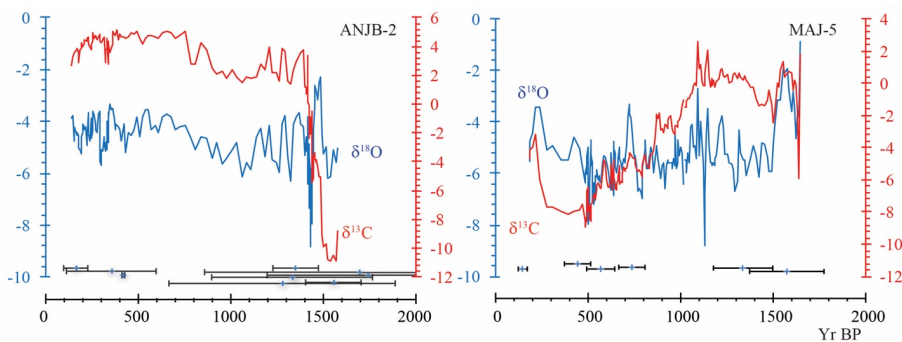


Figure 6: Variations in  $\delta^{13}\text{C}$  and  $\delta^{18}\text{O}$  in Stalagmite ANJB-2 and Stalagmite MAJ-5 during the Malagasy Late Holocene Interval. Supplementary Fig. S7 shows both the corrected and uncorrected values, and Fig. S8 compares the corrected  $\delta^{18}\text{O}$  for both stalagmites.

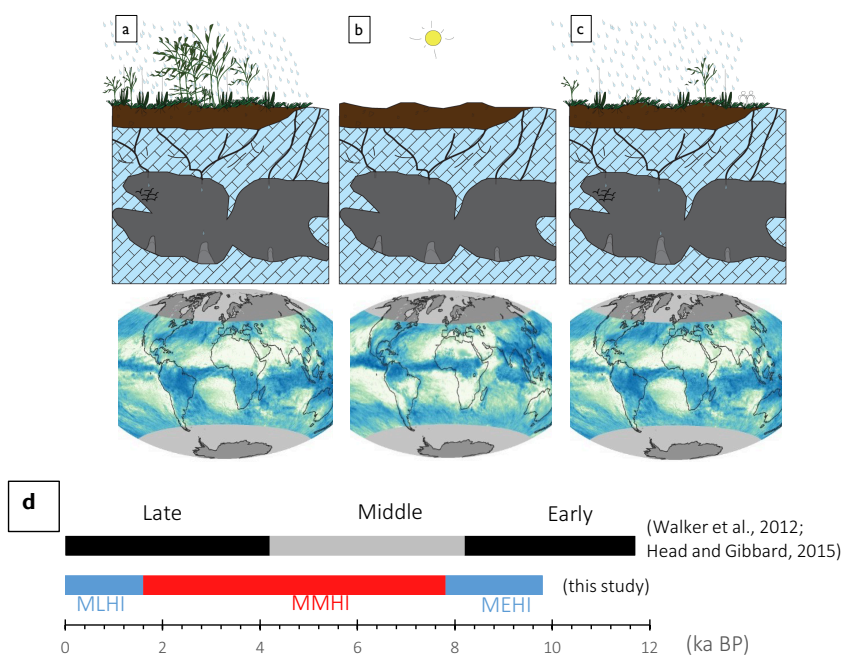


Figure 7: Simplified models portraying the Holocene climate change in NW Madagascar and the possible climatic conditions linked to the ITCZ. a) Wetter conditions during the early Holocene with ITCZ south (prior to c. 7.8 ka), favorable for stalagmite deposition. b) Periodic dry conditions during the mid-Holocene (between c. 7.8 and 1.6 ka) with ITCZ north with no stalagmite formation (refer to Sect. 5.2.2). c) Wetter conditions during the late Holocene (after c. 1.6 ka) with ITCZ south, favorable for stalagmite deposition. For details about paleo-vegetation reconstruction. Drawings are not to scale. The bottom figures are from the same source as Fig. 1a, and they are only used here to give a perspective of the possible position of the ITCZ during the early, mid, and late Holocene. d) Comparison of the three Malagasy Holocene interval with the Walker et al. (2012) and Head and Gibbard (2015) subdivision (see text for details, Sect. 5.2).

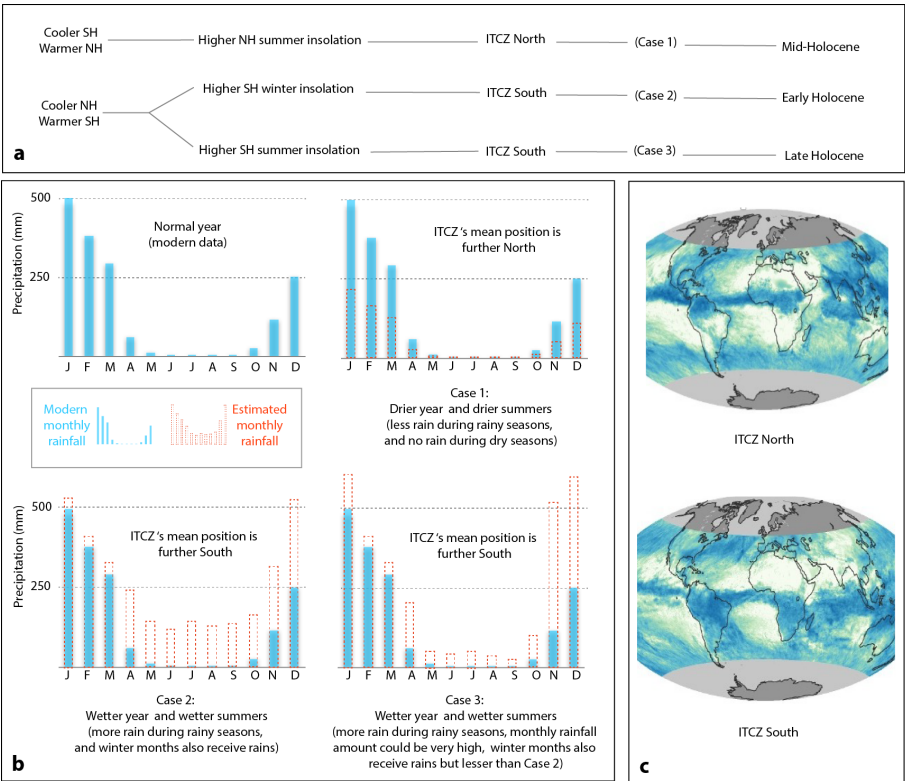


Figure 8: Conceptualizing the different possible outcomes of the long-term latitudinal migration of the ITCZ. a) Highlighting the three possible scenarios of the Holocene. b) Barplots of monthly rainfall in NW Madagascar, using the modern data as a reference to estimating the region's paleoclimate during drier and wetter conditions. c) Global rainfall maps from NASA (same source as Fig.1). These maps are modern, but they are only shown here to give a better perspective of the position of Madagascar when the ITCZ is relatively north or south. See supplementary text for details.



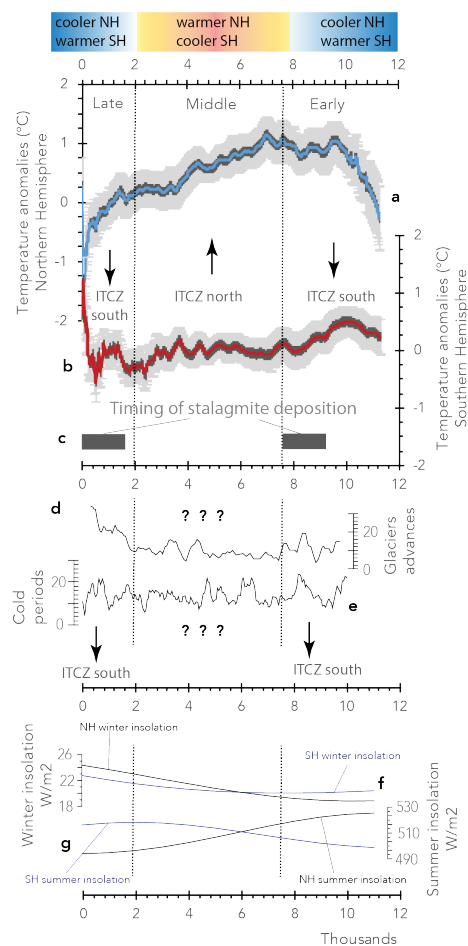
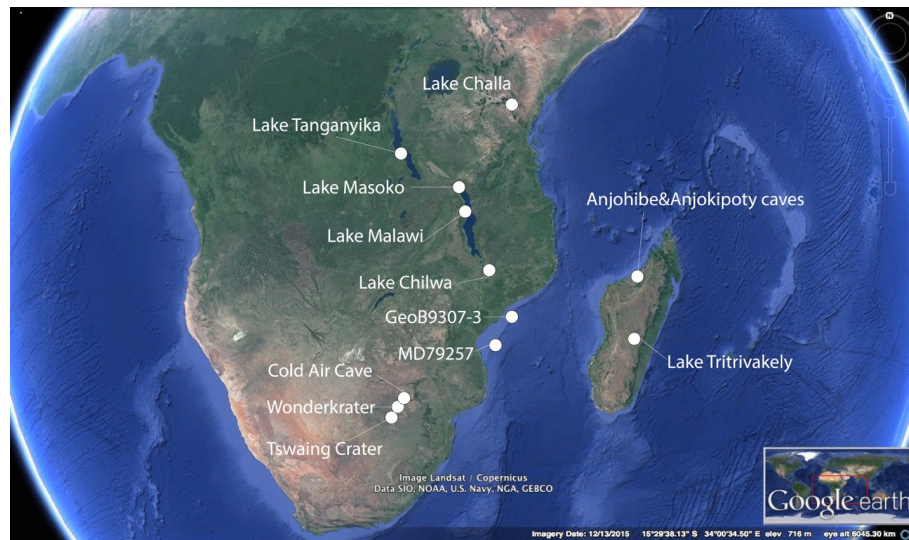
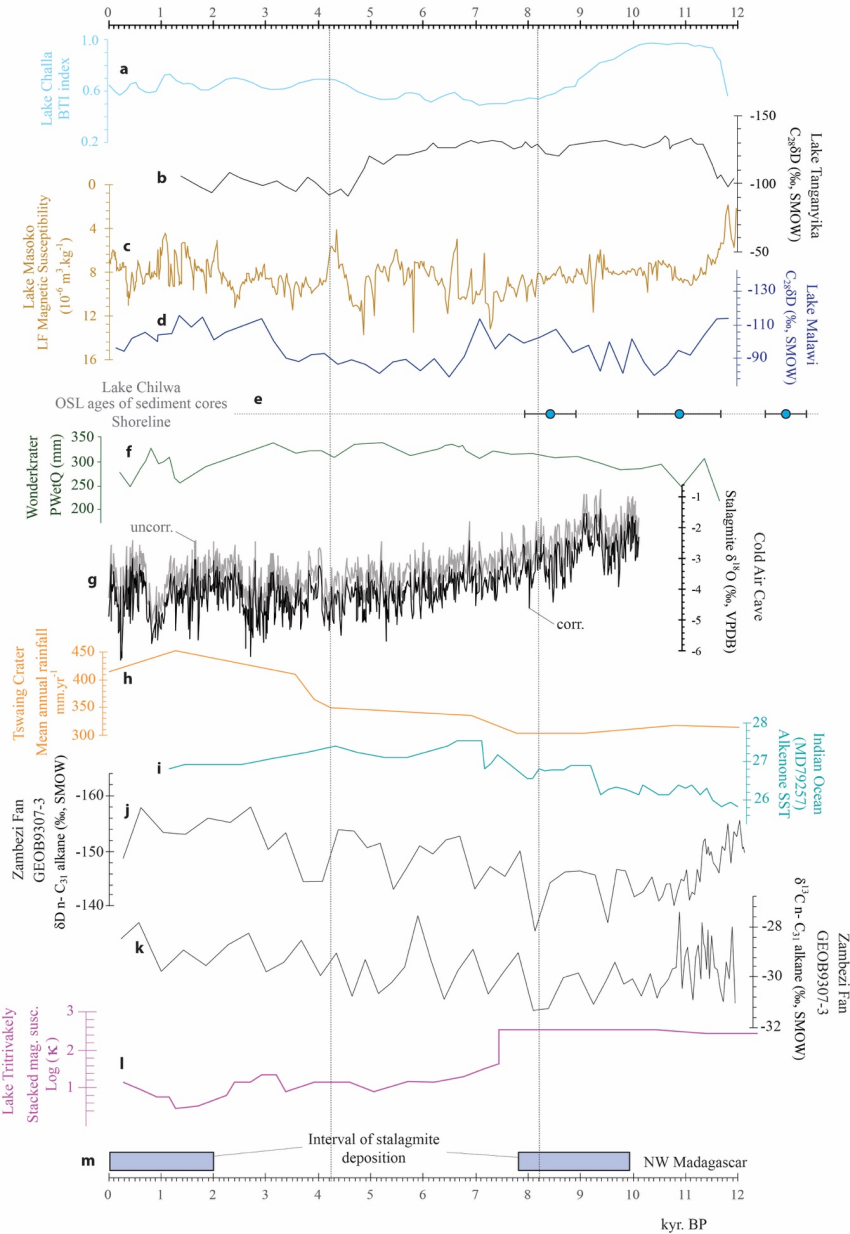


Figure 9: Possible Holocene climate forcings that influenced climate of NW Madagascar. a) Average Holocene temperatures in the NH 90°–30°N (blue). b) Average Holocene temperatures in the SH 90°–30°S (red). These temperature data are referenced to the 1961–1990 mean temperature (Marcott et al., 2013), with 1 $\sigma$  uncertainty (gray). c) Timing of deposition of Stalagmite ANJB-2 and MAJ-5. d) Curves representing the sum of glaciers advances from a set of global Holocene time series compiled from natural paleoclimate archives (Wanner et al., 2011). e) Curves representing the sum of cold periods from a set of global Holocene time series compiled

1314 from natural paleoclimate archives (Wanner et al., 2011). f) Winter insolation curves (Berger and  
 1315 Loutre, 1991). G) Summer insolation curves (Berger and Loutre, 1991)  
 1316



1317  
 1318  
 1319 Figure 10: Regional comparison. Google Earth image showing the location of the sites reported in  
 1320 Table S3 and in Figure 11. Most records reported from these sites are lake sediments, except for  
 1321 GeoB9307-3 (onshore off delta sediments), MD79257 (alkenone from marine sediment core), and  
 1322 Cold Air, Anjohibe, and Anjokipoty caves (stalagmites  $\delta^{18}\text{O}$ ).  
 1323



1324

Figure 11: Regional comparison. a) Lake Challa BTI index (Verschuren et al., 2009). b) Lake Tanganyika  $C_{28}$   $\delta D$  (Tierney et al., 2008, 2010). c) Lake Masoko low field magnetic susceptibility ( $10^{-6} \cdot m^3 kg^{-1}$ ) (Garcin et al., 2006). d) Lake Malawi  $C_{28}$   $\delta D$  (Konecky et al., 2011). e) Lake Chilwa OSL dates of shoreline (Thomas et al., 2009). f) Wonderkrater reconstructed paleoprecipitation, PWetQ (Precipitation of the Wettest Quarter; Truc et al., 2013). g) Cold Air Cave corrected (corr.) and uncorrected (uncorr.)  $\delta^{18}O$  profiles from Stalagmite T8 (Holmgren et al., 2003). h) Tswaing Crater paleo-rainfall derived from sediment composition (Partridge et al., 1997). i) Indian Ocean SST records from alkenone (Bard et al., 1997; Sonzogni et al., 1998). j-k) Zambezi  $\delta D$   $n-C_{31}$  alkane ( $\delta^{13}C$   $n-C_{31}$  alkane (Schefuß et al., 2011). l) Lake Tritrivakely stacked magnetic susceptibility (Williamson et al., 1998). m) NW Madagascar (Anjohibe and Anjokipoty) interval of deposition of Stalagmite ANJB-2 and Stalagmite MAJ-5 (this study). The two vertical dashed lines indicate the boundary of the Early, Middle, and Late Holocene by Walker et al. (2012) and Head and Gibbard (2015).

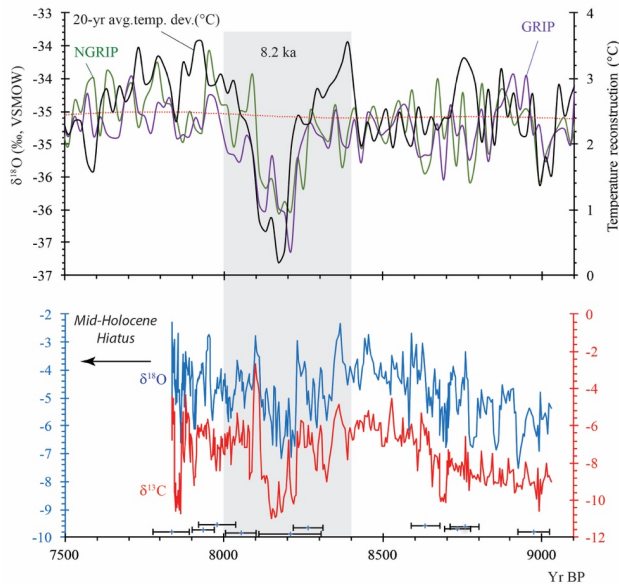


Figure 12: The 8.2 ka event in Madagascar. Oxygen isotope record from Greenland (GRIP and NGRIP) ice cores (Vinther et al., 2009) compared with Stalagmite ANJB-2  $\delta^{18}O$  and  $\delta^{13}C$ .