

Date: 21 August 2017
Subject: Resubmission of manuscript

Dear Editor,

Please find attached our manuscript entitled “**The influence of ice sheets on temperature during the past 38 Myr inferred from a one-dimensional ice sheet-climate model**” by L.B. Stap, R.S.W. van de Wal, B. de Boer, R. Bintanja and L.J. Lourens for your consideration for publication in *Climate of the Past*. It is a revision of our earlier submitted manuscript “The influence of ice sheets on temperature during the past 38 million years” (Ref. No. cp-2016-109), which was handled by Dr. Guo.

We believe we have addressed all remaining concerns of the four reviewers. We have revised the manuscript according to their suggestions. Most importantly, we have expanded the section on the model hysteresis with an analysis of the energy balance. This includes three new figures, two of which we have placed in the supplementary material. In our opinion, the new analysis has made this section more comprehensive, and therefore better understandable and more convincing.

We hope the new manuscript is to the satisfaction of the reviewers and yourself.

Yours Faithfully,

Lennert Stap

Institute for Marine and Atmospheric research Utrecht (IMAU)
Utrecht University
P.O. Box 80.005
3508 TA Utrecht
The Netherlands
Email: L.B.Stap@uu.nl

REPLY TO THE COMMENTS BY THE REVIEWERS

Color coding:

Black – comments by reviewers

Blue – reply by authors

Red – Changes made in the manuscript (page and line numbers refer to the revised manuscript)

Reviewer #1

In the revised version of the paper, the authors have addressed most of my comments. However, they have not properly addressed one of my concerns:

'I'm not aware of any other modeling study showing a hysteresis behavior that is caused by the atmosphere model or ocean model when excluding overturning, so it would be interesting to know what is causing this. Because of the relatively short time scale of atmospheric processes, it seems difficult to imagine that the climate model keeps memory of the initial conditions over multimillennial time scales. Could the authors elaborate on this?'

An explanation of what processes are causing the hysteresis when ice sheets and CO₂ are prescribed still remains unclear to me. Since this hysteresis makes a difference of ~50-100 ppm in modeled atmospheric CO₂ over the last 10 Myr (Fig.2), it seems important to me that the physical mechanism behind this behavior is explained. For instance, what is different between 'up' and 'down' simulations at 150 ppm in the atmosphere and/or ocean? Understanding this behavior is important also to exclude the presence of problems in the modeling setup.

We thank the reviewer for considering our manuscript once more. We have addressed his/her remaining concern by adding a new figure (Figure 4) showing the difference in the meridional atmospheric temperature distribution at 150 ppm between the up and down runs. We have chosen this quantity, because we focus on this in later sections. The difference in oceanic temperature, however, is similar. We have also added an analysis (including two new supplementary figures) of the energy balance calculations to section 3.1, by showing the energy imbalance at the top of the atmosphere in both the inverse and the forward runs of the model. The energy imbalance shows the same branches as global temperature when plotted against CO₂. This is also the case in a model run, where surface albedo and ocean overturning strength are kept at present-day configuration. This leads us to conclude that the convergence towards different imbalances at the same CO₂, which is most likely a consequence of the temperature dependency of atmospheric transparency to short and long wave radiation, is at the heart of the hysteresis in the CO₂-temperature relation that we find. We believe the extra analysis has made the paper more comprehensive and therefore clearer, hopefully to the satisfaction of the reviewer.

Page 6, line 9-10:

The difference is generally larger at higher than at lower latitudes, peaking at 60° S and 80° N (Fig. 4, red line).

Page 6, line 15-33:

This difference is now more uniformly spread over the globe, albeit slightly larger in the Southern than in the Northern Hemisphere (Fig. 4, blue line). Having ruled out albedo and ocean overturning strength, which only act to enhance it, the source of the hysteresis is most likely the temperature dependency of atmospheric transparency to short and long wave radiation in the energy balance calculations (Bintanja, 1996). Unfortunately, disabling this dependency in the energy balance calculations leads to numerical instability, causing the model to crash shortly after initiation. However, its influence is suggested by the model converging to a smaller steady-state energy imbalance at the top of the atmosphere, when the model has previously experienced high CO₂ values. This is the case in both the fully coupled run (Suppl. Fig. 1a) and the run where surface albedo and ocean overturning strength are kept fixed (Suppl. Fig. 1b). An energy imbalance at the top of the atmosphere when the atmospheric and oceanic temperatures have equilibrated, means there is an energy leak. When this energy leak is positive, the outgoing radiation and therefore the radiative temperature of the Earth are underestimated. For steady-state PI conditions, most General Circulation Models (GCMs) show positive energy imbalances, typically below 2 Wm⁻² (Lucarini and Ragone, 2011). In our model, more energy is lost at higher CO₂ concentrations, meaning the model simulates increasingly too cold temperatures towards warmer climates. Therefore, the climate sensitivity is underestimated. However, the energy leak remains relatively small: 0 to 4.6 Wm⁻² globally averaged for CO₂ values between 150 and 1200 ppm (Suppl. Fig. 1a). In the inverse mode runs, the energy imbalance is indeed also different: the energy imbalance is smaller in the 38-Myr run than in the 5-Myr run (Suppl. Fig. 2, blue and green lines), indicating that the modelled climate states in these runs are in different branches of the curve shown in Suppl. Fig. 1. Although the difference in energy imbalance is small between the different branches, it evidently has important implications for the simulated CO₂ in inverse mode.

Page 8, line 1-2:

Furthermore, the energy imbalance at the top of the atmosphere is not affected significantly by retuning the model, and remains lower in this simulation than in the 5-Myr run (Suppl. Fig. 2, red line).

Reviewer #2

Review of revised manuscript cp-2016-109 "The influence of ice sheets on temperature during the past 38 million years "

After reading of the authors' response and the revised manuscript, in my view there are some issues with that manuscript that still remain, which warrant a minor revision before it is suitable for publication.

General comments:

The authors' effort to address the first set of comments from the reviewers is appreciated, and in my opinion the revisions have improved the manuscript. The study should aid in the understanding and interpretation of the long term climate - ice sheet interaction in the transient simulations, which also sets a reference simulation for more sophisticated models. The scope of the new version of the paper, as the revised title and abstract state, is properly

addressed. The overall structure of the paper is substantially improved. The introduction now includes useful discussion of complex climate model simulations on shorter time scales. The equations of the model are added so the paper is easier to read.

Sec3:

1. Hysteresis

This is the section that reviewer#2 holds strong objection, while reviewer#1 also wants the authors to clarify. I agree with the authors that these experiments are potentially interesting and provide valuable information for the research community, but some concerns (see below minor comments) still need to be addressed.

2. pCO₂ reconstruction

As reviewer#2 points out that a drawback of the study is extending the simulation to the late Eocene (38 Ma) but completely ignoring the role of tectonics on CO₂ in the model. I see the authors make this limitation clearer and show more quantified results of their simulated pCO₂ compared with available proxies in the revised manuscript (in new Sec 3.3). In my view, more sophisticated model and setup are necessary to fully address such a caveat in the future studies.

Sec 4:

The ice-albedo feedback and the surface-height-temperature feedback are compared, and they have potentially interesting implications for the interpretation of ENSO proxy data. The overall argument under three CO₂ scenarios (low CO₂ -> strong NH ice-sheet and temperature change, albedo feedback more important; intermediate CO₂ -> little melt NH ice-sheet and no deglaciation of Antarctica, minor temperature change; high CO₂ -> strong SH ice-sheet and temperature change, elevation feedback more important) is fairly convincing.

We thank the reviewer for considering our manuscript, and we are pleased he/she agrees on the merit of our study. Below, we will reply to the minor concerns raised, and explain how we have revised the manuscript. We believe this has improved the quality of the paper, particularly of Section 3.1, and hope it is to the satisfaction of the reviewer.

Minor comments:

As suggested by reviewer#1, it is curious that a hysteresis behavior occurs when excluding overturning. For completeness the authors should at least list previous studies that has a similar feature but due to overturning (e.g. Zhang et al., 2014). Furthermore, after the discussion that rules out the possibility of coupled ice-sheet, coupled ocean overturning and sea ice and snow cover, the authors argue at the end of Sec 3.1 that 'this means that the hysteresis is inherent to the core of the climate model: the parameterisation of vertical and horizontal energy transfer in the ocean and atmosphere', but the conjecture is not really convincing. More evidences should be provided.

This concern is shared by reviewer #1. We now refer to the study mentioned (Zhang et al., 2014). Furthermore, we provide more evidence for our claim that the energy balance calculations are the cause of the hysteresis, by showing the energy imbalance at the top of the atmosphere. See also our reply to the comment of reviewer #1.

Page 6, line 12-13:

Keeping the ocean overturning strength, a known source of hysteresis in other models (e.g. Zhang et al., 2014), fixed at PD also leads to a small reduction; the difference becomes 0.73 K (Fig. 3c).

Also in the conclusion section it would be better for the authors not to simply list the conclusion as in the abstract, but to strengthen the connection between them (e.g. what's the implication of hysteresis and pCO₂ caveat in Sec 3 that potentially influence the conclusion in Sec 4), and to more convincingly demonstrate that those materials in Sec 3 are crucial to comprehensively understand the target of the study.

We have expanded the conclusion section with some text, explaining why we retune the model because of the hysteresis. Furthermore, we briefly describe the implications of the retuning for the findings in Section 4, the influence of land ice on the ESS and polar amplification. This should help the reader to better understand the importance of Section 3.

Page 12, line 26 – page 13, line 3:

The hysteresis is most likely a consequence of the temperature dependency of the energy balance calculations. This is suggested by the fact that the model converges to a different steady-state energy imbalance at the top of the atmosphere, and therefore a different climate state, depending on the history of the run. It is still unknown whether this behaviour is also exhibited by other models. We therefore suggest that in the future, climate models should be tested for this behaviour by confronting them with high CO₂ values before simulating cooler climates. In our case, it leads to unrealistically low simulated CO₂ values over roughly the past 13 Myr in our long 38-Myr simulation when CO₂ levels are below 450 ppm, to compensate for the higher temperatures. We have therefore retuned the model, by changing the uncertain cloud optical thickness parameter. This leads to lower temperatures at the same CO₂ levels, such that higher CO₂ concentrations are sufficient to obtain the same temperatures. After retuning, the simulated CO₂ over the past 800,000 years is in reasonable agreement with the ice-core record again. The relations between CO₂ and temperature, as well as between high- and low-latitude temperatures, are now different. However, the influence of ice sheet-climate interactions on ESS and polar amplification remains qualitatively the same.

Editorial comments:

A few words and phrases (especially in the revised part) need to proof read as the English is not correct, e.g. P8L15, P8L26.

These lines have been revised. We will also opt for a proof read by the copy editor, which is hopefully still a service this journal provides.

Refs

Zhang, X., Lohmann, G., Knorr, G., & Purcell, C. (2014). Abrupt glacial climate shifts controlled by ice sheet changes. *Nature*, 512(7514), 290-294.

Reviewer #3

Comments

This paper carried out transient simulations over the past 38 millions of years, an ice-sheet model coupled with an energy balance model. This work aims at studying how ice-sheets impact on climate changes in the past 38 million years.

Although the model is simple and idealized, this work is one of very few integrations over such a long time. The study is a good reference for future studies with more sophisticated models. I noticed that it has taken a quite long period in paper reviewing and revising. I found that the authors have made sufficient changes in the revised version. Thus, I would recommend publication of the paper.

[We thank the reviewer for considering our manuscript.](#)

I read through the manuscript and did not find major problems. There is one minor thing: page 11, line 7, “haven ” → “have”.

[The typo has been corrected.](#)

Reviewer #4

"The influence of ice sheets on the climate during the past 38 million years"

Author(s): Lennert B. Stap, Roderik S. W. van de Wal, Bas de Boer, Richard Bintanja, and Lucas J. Lourens

I was indeed very busy these last two months and, because I raised major criticism in my first review and also because the authors provided an improved manuscript, it took me some time to reconsider this manuscript. Therefore, I apologize for this long delay.

General comments:

A very good point when reviewing a CP paper is that the different reviews of the paper are published and therefore are available to the readers. I did not change my mind concerning this paper. Indeed, as I said in my first review, this is an interesting, but limited step towards capturing ice sheet impact on climate evolution. Interesting, because it is using a simplified tool that enables the author to explore ice sheets and climate evolution since 38 Ma but limited, because the comparison with real evolution of climate due to the use of EBM for climate and 1D ice sheet model for ice sheets that only allow for a very theoretical approach. Moreover, even if the structure of the paper has been improved, I think that a first step using realistic CO₂ reconstructions would have been a very interesting exercise, rather than reconstructing CO₂, which is anyway a very difficult exercise. The authors now answer to my major comments concerning the weakness of their introduction in terms of comparison with previous studies. Also, as requested by the first reviewer, they added more information, included equations on their model and clarified their experimental design and comparison to CO₂ reconstruction. They did not convince me on some aspects (see detailed review below) but I nevertheless consider that, with all the limitations they already included and, accounting for suggestions and remarks below, this paper may be published in *Climate of the Past*.

We thank the reviewer for another careful consideration of our manuscript. We are pleased that the reviewer now finds it worthy of publication after minor revisions. Below, we describe how we have dealt with his/her remaining concerns. We believe this has improved the quality of the manuscript.

Detailed comments:

title: I think the title should refer to the fact it is a modeling study. Therefore, I would suggest "Influence of ice sheets on the climate during the past 38 million years inferred from a simple coupled ice sheet/climate model". This point is crucial for me, because, due to many major simplifications in this approach, the results are very theoretical, compared to the real climate evolution.

We have changed the title to “The influence of ice sheets on temperature during the past 38 million years inferred from a one-dimensional ice sheet-climate model”.

Methodology:

This part has been clearly improved due to both reviewer comments. Nevertheless, I think that, because the authors have a simple tool, that enables them to perform many simulations accounting for different CO₂ scenarios, it would have been very interesting to prescribe reconstructed CO₂ evolutions from different proxies to explore ice-sheet and climate evolution. Especially, to analyze the Antarctica inception, as simulated in the different scenarios, (e.g. when it occurred, and for which CO₂ level, without any tuning). Nevertheless, I agree that they use a consistent approach, but tuning parameters, without understanding where are the bias and caveat of this method.

I am not sure I fully understand for instance why they have to tune the CO₂ value for inception to the one from Pollard and Deconto and what are the consequences of this tuning.

The tuning targets for the ablation threshold parameters of the different ice sheets have been described in an earlier publication (Stap et al., 2014). For the East Antarctic ice sheet, the model was tuned to produce a realistic present-day ice sheet. Since this was the case in a large range of values for the ablation parameter, the extra constraint of glacial inception at roughly 700 ppm was used. The effect of altering this parameter for the EAIS on the inception of this ice sheet has also been discussed before (Stap et al., 2016), although maybe not in the amount of detail the reviewer would have liked. It was shown that changing the value of C_{abl} from -30 to -5 results in glacial inception at roughly 450 ppm instead of 700 ppm. We now refer to these publications in the model section. We feel, however, that the analysis the reviewer suggests would be partly repetitious, and in any case beyond the scope of this paper. We refrain from using prescribed CO₂-scenarios, because we feel the difference between our inversely simulated CO₂ and proxy data, most importantly the lack of a simulated difference between MMCO and EOT CO₂ levels, already reflects the caveats in our model approach very accurately. The inverse approach we take here, is in our opinion a natural continuation of a long line of papers, the most important ones being listed in the introduction section.

Page 4, line 15-18:

The tuning targets and consequent values for C_{abi} have been described in Stap et al. (2014). The influence of this parameter for inception of the East Antarctic ice sheet has been discussed in Stap et al. (2016b), who showed that changing the value from -30 to -5 results in glacial inception at roughly 450 ppm instead of 700 ppm.

References:

Stap, L. B., Van de Wal, R. S. W., De Boer, B., Bintanja, R., and Lourens, L. J.: Interaction of ice sheets and climate during the past 800 000 years, *Climate of the Past*, 10, 2135–2152, 2014.

Stap, L. B., Van de Wal, R. S. W., De Boer, B., Bintanja, R., and Lourens, L. J.: The MMCO-EOT conundrum: same benthic $\delta^{18}\text{O}$, different CO_2 , *Paleoceanography*, 31, doi:10.1002/2016PA002958., 2016.

Discussion:

In the discussion, the authors argue on the impact of ice sheets variability on climate for high and low CO_2 . It is a very consistent, but theoretical analysis, when compared to real climate evolution for many reasons, some are related to the fact that it is only the radiative forcing and not the dynamics that is considered here.

On the other hand, rapid dynamics change of the ice sheets may have important consequences on tropical atmospheric circulation (see for instance Mulitza 2008 for Heinrich events and African monsoon) that may change drastically our view on the variability of the ice sheet and its impact during cold and warm phases.

Our focus is on long-term interactions, which is mentioned several times in the manuscript. We have added a sentence to the conclusion section, admitting to our models' inability to capture sub-millennial climate dynamics. We recognize, in agreement with reviewer #2, that studies with more detailed models remain important to simulate smaller spatial and temporal scales.

Page 12, line 14-16:

The physics in our model are not detailed enough to simulate sub-millennial climate dynamics, which could have important consequences on for instance tropical atmospheric circulation (Mulitza et al., 2008).

Comments on figures:

Fig 4: Please specify that the red curve is the new reference. The x axis title should be (Myeas).

Fig 4A: the new ref systematically underestimates the values usually accounted for this period, after mis-M2 (~3.3 Ma) and till 3.0 Ma, for this warm period, PliomIP simulations take a value of 405 ppm (Haywood 2012), significantly larger than the new reference results (300 ppm).

The figure and caption have been corrected. A reference to the PliomIP experiments is included in the text.

Page 8, line 15-18:

The variability in our simulation is more in line with the boron isotope proxy (Martínez-Botí et al., 2015), although our simulated CO₂ values are lower between 3.2 and 2.8 Myr ago, closer to the alkenone estimates Badger et al. (2013). Modelling studies with General Circulation Models (GCMs) generally use higher values for the Pliocene, for example 400 ppm in the forthcoming PlioMIP2 experiments (Haywood et al., 2016).

Fig 4b: For MMCO, the CO₂ are overestimated, with respect to the data.

Fig 4c: In this case, the new reference results are lower than the data. This figure illustrates the interest of providing simulations with consistent proxy reconstruction (alkenone, boron, stomates) rather than computed CO₂, which is either overestimating or underestimating these reconstructions and moreover did not capture correctly all the processes for this geological time span.

Please refer to our reply to an earlier comment of this reviewer.

Fig. 5: It would be very interesting to make several plots rather than only one with the three computed parameters to compare also the sea level evolution and the temperatures to data. For instance, 5a could be delta O18 and CO₂ and 5b could be sea level evolution computed and compared to data and 5c temperature computed and compared to data.

We prefer to show only our results in this figure, because it is clearer. We already show comparisons to other data and model results in figures 2, 5, 7 and supplementary figure 3. Our modelled sea level and temperature are largely in agreement with De Boer et al. (2010) and De Boer et al. (2012), who have done further comparisons. For instance, they compared their ice volume simulation to sea level data from Red Sea sediments (Rohling et al., 2009), and their temperature simulation to a Mg/Ca proxy data deep-sea temperature record (Sosdian and Rosenthal, 2009b). We now refer the reader to this earlier work.

Page 9, line 5-8:

The latter two are largely similar to De Boer et al. (2010) and De Boer et al. (2012), where comparisons to proxy data and other modelling studies can also be found. For example, they showed satisfactory agreement with a sea level curve derived from Red Sea sediments Rohling et al. (2009) and a Mg/Ca proxy data deep-sea temperature record (Sosdian and Rosenthal, 2009b).

References:

De Boer, B., Van de Wal, R. S. W., Bintanja, R., Lourens, L. J., and Tuenter, E.: Cenozoic global ice-volume and temperature simulations with 1-D ice-sheet models forced by benthic $\delta^{18}\text{O}$ records, *Annals of Glaciology*, 51, 23–33, 2010.

De Boer, B., Van de Wal, R. S. W., Lourens, L. J., and Bintanja, R.: Transient nature of the Earth's climate and the implications for the interpretation of benthic $\delta^{18}\text{O}$ records, *Palaeogeography, Palaeoclimatology, Palaeoecology*, 335, 4–11, 2012.

Rohling, E. J., Grant, K., Bolshaw, M., Roberts, A. P., Siddall, M., Hemleben, C., and Kucera, M.: Antarctic temperature and global sea level closely coupled over the past five glacial cycles, *Nature Geoscience*, 2, 500, 2009.

Sosdian, S. and Rosenthal, Y.: Deep-sea temperature and ice volume changes across the Pliocene-Pleistocene climate transitions, *Science*, 325, 306–310, 2009.

The influence of ice sheets on temperature during the past 38 million years inferred from a one-dimensional ice sheet-climate model

Lennert B. Stap^{1,2}, Roderik S. W. van de Wal¹, Bas de Boer¹, Richard Bintanja³, and Lucas J. Lourens⁴

¹Institute for Marine and Atmospheric research Utrecht (IMAU), Utrecht University, Princetonplein 5, 3584 CC Utrecht, The Netherlands

²Alfred Wegener Institute, Helmholtz Centre for Polar and Marine Research (AWI), Bussestrasse 24, 27570 Bremerhaven, Germany

³Royal Netherlands Meteorological Institute (KNMI), Utrechtseweg 297, 3731 GA, De Bilt, The Netherlands

⁴Department of Earth Sciences, Faculty of Geosciences, Utrecht University, Heidelberglaan 2, 3584 CS Utrecht, The Netherlands

Correspondence to: Lennert B. Stap (L.B.Stap@uu.nl)

Color coding:

Changed or added text

Abstract. Since the inception of the Antarctic ice sheet at the Eocene-Oligocene Transition (~ 34 Myr ago), land ice has played a crucial role in Earth's climate. Through feedbacks in the climate system, land ice variability modifies atmospheric temperature changes induced by orbital, topographical and greenhouse gas variations. Quantification of these feedbacks on long time scales has hitherto scarcely been undertaken. In this study, we use a zonally averaged energy balance climate model bi-directionally coupled to a one-dimensional ice sheet model, capturing the ice-albedo and surface-height-temperature feedbacks. Potentially important transient changes in topographic boundary conditions by tectonics and erosion are not taken into account, but briefly discussed. The relative simplicity of the coupled model allows us to perform integrations over the past 38 Myr in a fully transient fashion, using a benthic oxygen isotope record as forcing to inversely simulate CO_2 . Firstly, we find that the results of the simulations over the past 5 Myr are dependent on whether the model run is started at 5 or 38 Myr ago. This is because the relation between CO_2 and temperature is subject to hysteresis. When the climate cools from very high CO_2 levels, as in the longer transient 38 Myr run, temperatures in the lower CO_2 range of the past 5 Myr are higher than when the climate is initialized at low temperatures. Consequently, the modeled CO_2 concentrations depend on the initial state. Taking the realistic warm initialization into account we come to a best estimate of CO_2 , temperature, ice volume-equivalent sea level and benthic $\delta^{18}\text{O}$ over the past 38 Myr. Secondly, we study the influence of ice sheets on the evolution of global temperature and polar amplification by comparing runs with ice sheet-climate interaction switched on and off. By passing only albedo or surface height changes to the climate model, we can distinguish the separate effects of the ice-albedo and surface-height-temperature feedbacks. We find that ice volume variability has a strong enhancing effect on atmospheric temperature changes, particularly in the regions where the ice sheets are located. As a result, polar amplification in the Northern Hemisphere decreases towards warmer climates as there is little land ice left to melt. Conversely, decay of the Antarctic ice sheet increases polar amplification

in the Southern Hemisphere in the high-CO₂ regime. Our results also show that in cooler climates than the pre-industrial, the ice-albedo feedback predominates the surface-height-temperature feedback, while in warmer climates they are more equal in strength.

1 Introduction

5 The most abundant information source with the highest resolution on Cenozoic global climate change are stacked benthic oxygen isotope ($\delta^{18}\text{O}$) records (Lisiecki and Raymo, 2005; Zachos et al., 2008; Cramer et al., 2009), which have been well-studied and statistically analysed (e.g. Mudelsee et al., 2014). The benthic $\delta^{18}\text{O}$ signal is known to be comprised of two factors (e.g. Chappell and Shackleton, 1986): 1) the deep-sea temperature, and 2) the volume of land ice on Earth. An additional independent record of either one is therefore required to separate the signal into its individual constituents. Deep-sea temperature records can be reconstructed based on the Mg/Ca proxy (Lear et al., 2000; Sosdian and Rosenthal, 2009; Elderfield et al., 2012), but a global average deep-sea temperature is hard to obtain. Sea level records are also available, but are subject to the same problem of inferring a global mean (Miller et al., 2005; Kominz et al., 2008; Rohling et al., 2014). Studies using sea level records face the additional challenge of converting local sea level to ice volume, which is not straightforward mainly because of dynamic topography (Mitrovica and Milne, 2003; Kendall et al., 2005). Alternatively, calculation of benthic $\delta^{18}\text{O}$ can be incorporated in coupled ice sheet-climate models, by using parameterisations of the contribution of deep-sea temperature (Duplessy et al., 2002), and the isotopic content of ice sheets (Cuffey, 2000). Hitherto, studies using this approach have mostly focused on relatively short time intervals surrounding important climatic events, such as the Eocene-Oligocene Transition (33.9 Myr ago; Tigchelaar et al. (2011); Ladant et al. (2014); Wilson et al. (2013)), the Mid-Miocene Climatic Optimum (13.9 Myr ago; Langebroek et al. (2010); Gasson et al. (2016)), and the Pliocene-Pleistocene Transition (2.6 Myr ago, Willeit et al. (2015)), using models of varying complexity. These studies have provided valuable information because they have simulated these key events in great detail. However, they do not describe climate change on multi-million year time scales, and prove consistency by transiently simulating multiple events using the same set-up. This is mainly due to insufficient computer power. An effort was made to simulate the past 3 Myr using a model of reduced complexity (Berger et al., 1999), but they did not include the Southern Hemisphere and the Antarctic ice sheet in their model. Here, we will use a coupling between an energy balance global climate model and a one-dimensional ice sheet model of all major ice sheets, to perform transient simulations over the past 38 Myr. By focusing on the long term evolution of climate, we provide a complementary approach to snap-shot and short time slice experiments of more complex models.

Our model approach builds on the inverse routine to derive atmospheric temperature from benthic $\delta^{18}\text{O}$, that was introduced by Oerlemans (2004). This methodology was consequently developed further to force stand-alone three-dimensional ice sheet models over the past 1 Myr (Bintanja et al., 2005; De Boer et al., 2013), the past 3 Myr (Bintanja and Van de Wal, 2008), and the past 5 Myr (De Boer et al., 2014). With this inverse routine, the past 40 Myr were simulated (De Boer et al., 2010) and further analysed (De Boer et al., 2012), using a one-dimensional ice sheet model that calculates all land ice on Earth. In Stap et al. (2014), this ice sheet model was coupled to a zonally averaged energy balance climate model (Bintanja, 1997), and run

over the past 800 kyr forced by a compiled ice core CO₂ record (Petit et al., 1999; Siegenthaler et al., 2005; Lüthi et al., 2008). Inclusion of a climate model added CO₂ to global temperature and sea level as an integrated component of the simulated system. In addition, it rendered the possibility of investigating ice sheet-climate interactions, specifically the ice-albedo and surface-height-temperature feedbacks. Furthermore, instead of annual mean and globally uniform temperature perturbations to present-day climate, seasonal meridional temperature distributions were used to force the different ice sheets. In a subsequent study, the inverse routine was transformed to yield CO₂ concentrations using the benthic $\delta^{18}\text{O}$ as input, making CO₂ a prognostic variable (Stap et al., 2016a). The resulting values were used to force the coupled model over the past 5 Myr. In Stap et al. (2016b), the model was run over the period 38 to 10 Myr ago, and the influence of Antarctic topographic changes on the simulated CO₂ was investigated. In this study, however, changes in topographic boundary conditions are not included, although their effect is briefly discussed.

Here, we will use this coupled ice sheet-climate model forced by benthic $\delta^{18}\text{O}$ to transiently simulate the entire past 38 Myr. We recognise that our simulation of CO₂ may be improved in subsequent studies that include geological processes that are still missing in our model setup. For instance tectonics leading to mountain uplift (Kutzbach et al., 1993) and closure of sea ways (Kennett, 1977; Toggweiler and Bjornsson, 2000; Hamon et al., 2013), erosion (Wilson et al., 2012; Gasson et al., 2015; Stap et al., 2016b), and vegetation changes (Knorr et al., 2011; Liakka et al., 2014; Hamon et al., 2012) may have affected the climate system during the past 38 Myr. Here, we will purely focus on the influence of ice sheets on the climate, in particular the relation between CO₂ and temperature, during this time. Earlier studies using more complex stand-alone ice sheet models and coupled ice sheet-climate models have for example determined the CO₂ thresholds for glaciation of Antarctica (DeConto and Pollard, 2003; Langebroek et al., 2010; Ladant et al., 2014; Gasson et al., 2014) and the Northern Hemisphere (DeConto et al., 2008; Hamon et al., 2013). Furthermore, they have investigated the hysteresis in the relation between ice volume and CO₂ (Pollard and DeConto, 2005), as well as the behaviour of the Antarctic ice sheet during the Oligocene (Pollard et al., 2013) and Plio-Pleistocene (Pollard and DeConto, 2009). Our model represents reduced complexity in the model hierarchy (see e.g. Pollard (2010) for a discussion), and adds a long-term transient perspective on the evolution of ice sheets and the climate. It reconciles knowledge on benthic $\delta^{18}\text{O}$, CO₂, sea level and temperature. However, it lacks ice-shelf dynamics and sophisticated grounding line parameterisations that have been shown to be important at least on short time scales (Pollard and DeConto, 2012; Pollard et al., 2015). Therefore, this study should be seen as a first step in the direction of simulating multi-million year time spans with coupled ice sheet-climate models, aiming to combine temperature, sea level and CO₂ in one framework. As such, its goal is two-fold. Firstly, as a precursory study, we attempt to identify interesting phenomena and potential obstacles, and set a reference simulation over the past 38 Myr. When results of more sophisticated models are achieved, they can be compared to ours to see which features appear in the full hierarchy of models and which are specific to more comprehensive models including more physics. Secondly, we perform multiple 38-Myr integrations of our coupled model with ice-sheet climate interactions switched on and off. This allows us to quantify the effect of these interactions on global temperature perturbations and polar amplification, distinguishing between the ice-albedo and the surface-height-temperature feedback.

2 Model

We use the same simplified coupled ice sheet-climate model setup as Stap et al. (2016b) (Fig. 1). The climate component is a zonally averaged energy balance climate model (based on North, 1975; Bintanja, 1997) with 5° latitudinal and 0.5 day temporal resolution. It includes a simple ocean model that has 6 vertical layers and mimics meridional ocean circulation with varying strength based on the density difference between the polar and equatorial waters. Sea ice cover is calculated thermodynamically at 1.25° resolution. The climate model provides the local monthly temperature input (T) to the mass balance module of one-dimensional models of the five major Cenozoic ice sheets (Eurasian, North American, Greenland, West Antarctic and East Antarctic ice sheets) (De Boer et al., 2010). Herein, accumulation follows as a temperature-dependent fraction of precipitation (P):

$$10 \quad P = P_0 e^{0.04T - R/R_c}, \quad (1)$$

where P_0 is present-day precipitation, R is ice-sheet radius, and R_c is an ice-sheet dependent critical radius. An insolation-temperature melt formulation is used to calculate ablation:

$$M = [10T + 0.513(1 - \alpha)Q + C_{abl}]/100. \quad (2)$$

Here, α is surface albedo, and Q local radiation obtained from Laskar et al. (2004). Ice-sheet dependent tuning factors C_{abl} determine the thresholds for which ablation starts. **The tuning targets and consequent values for C_{abl} have been described in Stap et al. (2014). The influence of this parameter for inception of the East Antarctic ice sheet has been discussed in Stap et al. (2016b), who showed that changing the value from -30 to -5 results in glacial inception at roughly 450 ppm instead of 700 ppm.** The ice sheet models calculate the surface height change and ice sheet extent using the Shallow Ice Approximation with 15 to 25 km resolution depending on the ice-sheet (De Boer et al., 2010). This information is used to update the land ice fraction and surface height profile in the climate model for the next time step. Exchange of variables takes place every 500 model years, constituting the output-timestep of the coupled model. The isotopic content of the ice sheets is calculated using the parameterisation of Cuffey (2000):

$$\delta^{18}O_i = \delta^{18}O_{PD} + \beta_T \Delta T + \beta_Z \Delta Z, \quad (3)$$

where β_T and β_Z are ice-sheet dependent parameters (values listed in De Boer et al., 2010), that determine the influence of annual mean temperature (ΔT) and surface height (ΔZ) perturbations with respect to present day. Present-day isotopic contents ($\delta^{18}O_{PD}$) match the modeled values of an earlier study by Lhomme et al. (2005). The modeled benthic $\delta^{18}O$ values follow from:

$$\delta^{18}O = [\delta^{18}O_b]_{PD} - \frac{\overline{\delta^{18}O_i} V_i}{V_o} + \left[\frac{\overline{\delta^{18}O_i} V_i}{V_o} \right]_{PD} + \gamma \Delta T_o, \quad (4)$$

where $[\delta^{18}O_b]_{PD}$ is the observed present-day value of benthic $\delta^{18}O$, and V_o and V_i are the ocean and land ice volume. The final term on the right hand side quantifies the influence of deep-sea temperature change with respect to present day (ΔT_o).

Gain factor γ is set to 0.28 ‰K^{-1} , taken from a paleotemperature equation (Duplessy et al., 2002). The coupled model is forced by insolation data (Laskar et al., 2004) and an inverse routine, which yields CO_2 concentrations from the difference between the modeled benthic $\delta^{18}\text{O}$ value and an observed value an output-timestep later (Stap et al., 2016a):

$$\text{CO}_2 = \overline{\text{CO}_2} * \exp[c * \{\delta^{18}\text{O}(t) - \delta^{18}\text{O}_{obs}(t + 0.5\text{kyr})\}], \quad (5)$$

5 where $\overline{\text{CO}_2}$ is the mean CO_2 concentration of the preceding 15 kyr, and c a strength-determining parameter (Stap et al., 2016a). For the observed benthic $\delta^{18}\text{O}$ values we use stacked records (Lisiecki and Raymo, 2005; Zachos et al., 2008), which effectively serve as model input. The radiative forcing anomaly with respect to present day is multiplied by a factor 1.3. to account for non- CO_2 greenhouse gases. This factor is based on analysis of CH_4 and N_2O records over the past 800 kyr (see Stap et al., 2014), and used to account for the lack of knowledge on non- CO_2 greenhouse gases prior to that period. An increase
10 or decrease in the relative contribution of non- CO_2 would need an opposing change in CO_2 . The result of the coupled model consists of mutually consistent records of benthic $\delta^{18}\text{O}$, atmospheric CO_2 , temperature, and ice-volume equivalent sea level.

3 Results and Discussion I: Long-term transient simulations

3.1 Hysteresis

15 We perform two model runs, one over the past 38 Myr (this run is called '38 Myr'), and one over the past 5 Myr (this run is called '5 Myr'). The 38-Myr run uses the stacked benthic $\delta^{18}\text{O}$ record of Zachos et al. (2008) as forcing. As a spin-up the model was initialized with a 1500 ppm CO_2 concentration for 50 kyr, and thereafter run for 2 Myr between 40 and 38 Myr ago using the inverse routine. This run is an extension of the reference run used in Stap et al. (2016b), to include the past 10 Myr. The record of Lisiecki and Raymo (2005) was used to force the 5-Myr run, after initializing the model for 100 kyr with 430
20 ppm CO_2 . This run served as a reference run before in Stap et al. (2016a). When we compare the final 5 Myr of our 38-Myr simulation to our 5-Myr simulation, we notice that the 38-Myr simulation shows much lower CO_2 concentrations (Fig. 2b, green and blue lines). These contradicting results cannot be explained by the use of different forcing records - Zachos et al. (2008) for 38 Myr as opposed to Lisiecki and Raymo (2005) for 5 Myr - as these show similar values during this time (0.02 ‰ average difference, not shown). To explore the difference, we additionally conduct four pairs of experiments with the model in
25 forward mode. In forward mode, we do not use the inverse routine, but force the model by a-priori designed CO_2 scenarios. We initialize the model using: a 450 ppm CO_2 concentration; no land ice; glacio-isostatically relaxed present-day topography. We force the model by changing the CO_2 input in steps of 50 ppm every 50 kyr. In one set of experiments (named 'up'), the CO_2 is first raised from 450 ppm to 1200 ppm, then lowered to 150 ppm, and increased again to 600 ppm. In the other set (named 'down'), the CO_2 is initially dropped from 450 to 150 ppm, then raised to 1200 ppm, and ultimately decreased again
30 to 300 ppm. Insolation is kept at PD level throughout all these equilibrium experiments.

Starting at 450 ppm CO_2 , the 'up' and 'down' runs show the same initial global temperature (Fig. 3a). However, in the 'down' run, where the CO_2 progresses stepwise downward first and then upward, the global temperatures at low (< 450 ppm)

CO₂ values are approximately a degree lower than those in the 'up' run, where CO₂ is first raised and then lowered. When the 'down' run is integrated over another CO₂ cycle, it shows the same global temperatures as the 'up' run (not shown). This means that once the coupled model has experienced high CO₂ values during its run, as is the case in the 38-Myr run but not in the 5-Myr run, the climates at lower CO₂ are warmer. This has important consequences for the simulated CO₂ concentrations as they have to decline further to obtain similar temperatures, which is what happens in the transient 38-Myr simulation forced by the inverse routine. The different branches in Fig. 3 are stable equilibria of the model. **The model behaviour does not depend on the forcing rate: using 50 ppm/100 kyr, 50 ppm/50 kyr, or 100 ppm/100 kyr leads to the same results.** This behaviour is a form of hysteresis as results depend on previous conditions of the model. The question now arises what the cause of this hysteresis is. The global temperature difference between the 'up' and 'down' run is 0.94 K at 150 ppm CO₂. **The difference is generally larger at higher than at lower latitudes, peaking at 60° S and 80° N (Fig. 4, red line).** When the ice sheet model is uncoupled, and the climate model is directly forced in the same manner but using PD ice sheets, the globally averaged temperature difference reduces to 0.69 K (Fig. 3b). Keeping the ocean overturning strength, **a known source of hysteresis in other models (e.g. Zhang et al., 2014),** fixed at PD also leads to a small reduction; the difference becomes 0.73 K (Fig. 3c). The combined effect of uncoupled ice and ocean overturning strength is still not sufficient to eliminate the hysteresis (Fig. 3d). Even when in addition sea ice and snow cover are kept constant, a small hysteresis (**0.11 K difference at 150 ppm**) is present. **This difference is now more uniformly spread over the globe, albeit slightly larger in the Southern than in the Northern Hemisphere (Fig. 4, blue line).** Having ruled out albedo and ocean overturning strength, which only act to enhance it, the source of the hysteresis is most likely the temperature dependency of atmospheric transparency to short and long wave radiation in the energy balance calculations (Bintanja, 1996). Unfortunately, disabling this dependency in the energy balance calculations leads to numerical instability, causing the model to crash shortly after initiation. However, its influence is suggested by the model converging to a smaller steady-state energy imbalance at the top of the atmosphere, when the model has previously experienced high CO₂ values. This is the case in both the fully coupled run (Suppl. Fig. 1a) and the run where surface albedo and ocean overturning strength are kept fixed (Suppl. Fig. 1b). An energy imbalance at the top of the atmosphere when the atmospheric and oceanic temperatures have equilibrated, means there is an energy leak. When this energy leak is positive, the outgoing radiation and therefore the radiative temperature of the Earth are underestimated. For steady-state PI conditions, most General Circulation Models (GCMs) show positive energy imbalances, typically below 2 Wm⁻² (Lucarini and Ragone, 2011). In our model, more energy is lost at higher CO₂ concentrations, meaning the model simulates increasingly too cold temperatures towards warmer climates. Therefore, the climate sensitivity is underestimated. However, the energy leak remains relatively small: 0 to 4.6 Wm⁻² globally averaged for CO₂ values between 150 and 1200 ppm (Suppl. Fig. 1a). In the inverse mode runs, the energy imbalance is indeed also different: the energy imbalance is smaller in the 38-Myr run than in the 5-Myr run (Suppl. Fig. 2, blue and green lines), indicating that the modelled climate states in these runs are in different branches of the curve shown in Suppl. Fig. 1. Although the difference in energy imbalance is small between the different branches, it evidently has important implications for the simulated CO₂ in inverse mode.

3.2 Retuning: new reference simulation

Originally, the 5-Myr run was calibrated to an Antarctic ice core proxy- CO_2 record (Petit et al., 1999; Siegenthaler et al., 2005; Lüthi et al., 2008) over the past 800 kyr (Stap et al., 2016a). It shows negligible bias (-3.9 ppm) to that record. As a consequence of the hysteresis described in Sect. 3.1, the 38-Myr run shows much lower values than this proxy record with a
5 -47.7 ppm bias (Fig. 2a, mind that here we show 1-kyr values instead of 40-kyr averages). The simulated CO_2 over the past 5 Myr in the 38-Myr run is also much lower than the hybrid proxy data-model reconstruction by Van de Wal et al. (2011) (Fig. 2b, black line). Therefore, we deduce that the CO_2 record of the 38-Myr run is not realistic over this period. To regain agreement with the ice core record, which we judge to be essential for a transient paleoclimate simulation, we define a new reference run in this study (new REF). In this new reference run we increase the cloud optical thickness parameter τ_{cl} from 3.11
10 to 3.41. We opt to alter this parameter because it was already used as a tuning parameter in the original climate model (Bintanja, 1997), and in the ice sheet-climate model coupling (Stap et al., 2014). Both values are physically plausible. Increasing τ_{cl} will lower the temperatures calculated by the climate model, such that for the same benthic $\delta^{18}\text{O}$ higher simulated CO_2 levels are obtained, in better agreement with the ice core record. However, this will also raise the threshold CO_2 level for the inception of the East Antarctic ice sheet (EAIS). By increasing the ablation threshold parameter C_{abl} in the insolation-temperature-melt
15 calculation (Eq. (2)) of the EAIS (from -30 to -10), this ice sheet glaciates at lower temperatures and therefore at lower CO_2 concentrations. This parameter was used in Stap et al. (2014) to match the CO_2 inception point for Antarctic glacial inception to the one found by DeConto and Pollard (2003) (~ 780 ppm), and is also poorly constrained. Changing this parameter compensates the unintended CO_2 threshold increase. We force the model in the same way as the earlier 38-Myr run over the past 38 Myr using the stacked benthic record of Zachos et al. (2008) as forcing.

20 The CO_2 concentrations of the new reference simulation are shown in Fig. 2 by red lines. The simulated CO_2 levels right before the Eocene-Oligocene Transition (EOT; ~ 33.9 Myr ago) and at the Middle-Miocene Climatic Optimum (MMCO; 17 to 15 Myr ago) are similarly high around 650 to 750 ppm, likewise as in the earlier 38-Myr simulation (Fig. 2c). In the time between these events, CO_2 in the new reference run is modestly higher, up to 100 ppm. This is because the deep-sea temperatures are lower at the same CO_2 , and therefore contribute less to the $\delta^{18}\text{O}$ anomaly with respect to present day.
25 Compensating for the lower deep-sea temperatures, higher CO_2 increases the $\delta^{18}\text{O}$ anomaly, by increasing both deep-sea temperature and the contribution of ice volume, hence raising sea levels (not shown). After the MMCO, when the EAIS has stabilised to near-PD size, the new reference simulation shows higher CO_2 values than the earlier 38-Myr simulation. Over the past million years, the new reference simulation (Fig. 2a, red line) agrees much better with the 5-Myr run (Fig. 2a, green line) and with the ice core CO_2 record (Fig. 2a, cyan line); the bias with respect to this proxy-record is reduced to 13.6 ppm.
30 Even after re-calibration, the simulated new reference CO_2 remains lower than in the 5-Myr run during the Pliocene and early Pleistocene (Fig. 2b, green line), as a consequence of the hysteresis. Although it is more variable than the reconstruction based on a constant Earth System Sensitivity (ESS) by Van de Wal et al. (2011) (Fig. 2b, black line), the long-term means are now similar. It remains debatable whether the shorter 5-Myr run or the new reference simulation is the most veracious over the past 5 Myr. On the one hand, the long simulation carries a longer memory, which would be closer to the state of the actual climate

system. Furthermore, the energy imbalance at the top of the atmosphere is not affected significantly by retuning the model, and remains lower in this simulation than in the 5-Myr run (Suppl. Fig. 2, red line). On the other hand, it is uncertain how accurately our climate model simulates very warm climates; the climate model is designed and tested for PD and LGM climates (Bintanja and Oerlemans, 1996). This argument favours the shorter 5-Myr run as the more trustworthy result, implying that CO₂ levels over the last 5 Myrs may have been up to 470 ppm.

3.3 Comparison to proxy CO₂ data

A comprehensive quantitative comparison between our CO₂ simulation and proxy data is hindered by scarcity and intermittency of data records. Nevertheless, in Fig. 5 we show the new reference CO₂ results together with proxy data over three periods where data is relatively abundant: the Late Pliocene (3.5 to 2.5 Myr ago), the Middle Miocene (18 to 13 Myr ago) and the Early Oligocene (35 to 30 Myr ago). The data is based on three important proxies (see also Beerling and Royer, 2011): alkenones (Pagani et al., 1999, 2011; Badger et al., 2013), boron isotopes (Pearson et al., 2009; Foster et al., 2012; Greenop et al., 2014; Martínez-Botí et al., 2015) and stomata (Van der Burgh et al., 1993; Kürschner, 1996; Kürschner et al., 2008; Retallack, 2009). During the Late Pliocene, the simulated CO₂ is more variable than the alkenone data from Badger et al. (2013) (Fig. 5a). This discrepancy between our simulation and the alkenone proxy (Pagani et al., 1999) is persistent throughout the Miocene (not shown). The variability in our simulation is more in line with the boron isotope proxy (Martínez-Botí et al., 2015), although our simulated CO₂ values are lower between 3.2 and 2.8 Myr ago, closer to the alkenone estimates Badger et al. (2013). Modelling studies with GCMs generally use higher values for the Pliocene, for example 400 ppm in the forthcoming PlioMIP2 experiments (Haywood et al., 2016). Comparison to the boron isotope proxy over the Miocene is hampered by lack of data. It would be interesting to know if this proxy also shows larger variability during that epoch. During the Middle Miocene, our simulated CO₂ is considerably higher than all proxy data records (Fig. 5b). Contrarily, during the Early Oligocene, it is a little bit lower (Fig. 5c). As mentioned in Sect. 3.2, the CO₂ inception point for Antarctic glacial inception was tuned to the one found by DeConto and Pollard (2003) (~ 780 ppm). It is therefore in agreement with the range of Antarctic glaciation values found by Gasson et al. (2014), using combinations of an ice dynamical model coupled to seven climate models (Fig. 5c, yellow shading). Using a different tuning, our Middle Miocene values are closer to the observations, but then the Early Oligocene values are also much lower (see Stap et al., 2016b, for an analysis). In short, we are not able to simulate a difference in CO₂ between right before the Eocene-Oligocene Transition and during the Middle Miocene Climatic Optimum. As our CO₂ simulation is obtained using benthic $\delta^{18}\text{O}$, this could indicate a discrepancy between the $\delta^{18}\text{O}$ and CO₂ proxies. More likely, however, it is for the largest part due to processes missing in our model set-up. Over the course of millions of years, tectonics, erosion and vegetation have led to topography and albedo changes that affect the climate system. Contrary to the findings of Foster and Rohling (2013), these geological processes may have had a significant impact on the relation between CO₂, sea level and temperature (Gasson et al., 2016). Indeed, in Stap et al. (2016b) we showed that in our model erosion could lead to a changing relation between CO₂ and ice volume over time, bringing $\delta^{18}\text{O}$ and CO₂ in line with other proxy indicators arguing for the importance of erosion. Also, we use a uniform lapse rate correction of 6.5 K for height changes in our model, which is a potentially important simplification (Gasson et al., 2014; Botsyun et al., 2016). In the future,

our simulation can be improved by including these processes. For now, with this limitation in mind, we will focus on the long-term interaction between ice sheets and the climate in our model.

4 Results and Discussion II: Ice sheet-climate interaction

Figure 6 shows the main results of the new reference run: benthic $\delta^{18}\text{O}$, atmospheric CO_2 , ice-volume-equivalent sea level and global temperature. The latter two are largely similar to De Boer et al. (2010) and De Boer et al. (2012), where comparisons to proxy data and other modelling studies can also be found. For example, they showed satisfactory agreement with a sea level curve derived from Red Sea sediments (Rohling et al., 2009) and a Mg/Ca proxy data deep-sea temperature record (Sosdian and Rosenthal, 2009). In our model, the relation between temperature and ice volume can roughly be divided into three regimes (see also De Boer et al. (2010) and Van de Wal et al. (2011)): 1) at low CO_2 values, strong ice volume variability due to dynamic Northern Hemispheric ice sheets, 2) at intermediate CO_2 values, weaker variability, 3) at high CO_2 values, strong variability due to a dynamic Antarctic ice sheet. This constitutes a sigmoidal temperature-sea level relation. The data-analysis results of Gasson et al. (2012) show a similar shape, but with higher deep-sea temperature anomalies during the warmer-than-PI climates. This was also the case in an earlier study using the same ice sheet model, but with parameterised deep-sea temperatures (De Boer et al., 2010). The trend we model in sea surface temperatures is also lower than what is suggested by proxy data (Herbert et al., 2016) (not shown). The modeled relation between logarithmic CO_2 and sea level is also sigmoidal. This is in very good agreement with the results from Foster and Rohling (2013), who derived a functional relation between these quantities from a geological data perspective (Fig. 7). However, sea level during the stable middle regime is lower in our case. This is coherent with the modeling results of Gasson (2013) (Suppl. Fig. 3). Possibly, recent advances in ice sheet modeling (Pollard et al., 2015) can explain (part of) this difference between models and data. Furthermore, our highest CO_2 levels are slightly lower than the data shows. The modeled CO_2 threshold for Antarctic glaciation is highly dependent on the mass balance parametrisation (Stap et al., 2016b; Gasson, 2013), the climate model used (Gasson et al., 2014), and the Antarctic topography (Stap et al., 2016b; Gasson et al., 2014). In our case, this threshold is distinctly higher than for that for land ice in the Northern Hemisphere. This is mainly a consequence of the higher latitude of the Antarctic continent, and in line with earlier findings (DeConto et al., 2008).

Now, we will investigate the influence of ice sheet-climate interaction on polar amplification and Earth System Sensitivity (ESS). The ESS is defined as the global temperature response to a radiative forcing caused by changing CO_2 , taking into account all climate feedbacks (PALAEOSENS Project Members, 2012). This radiative forcing by CO_2 is proportional to the logarithmic change of CO_2 (Myhre et al., 1998). In Fig. 8 (red dots), we therefore show the relation between global temperature anomalies from pre-industrial (PI) and the logarithm of CO_2 divided by a reference PI value of 280 ppm in our new reference run. Evidently, this relation is not constant, as in warm climates the global temperature increase for a given CO_2 increase is less strong. The slope of a least squares linear regression shows a value of 10.6 K for $\ln(\text{CO}_2/\text{CO}_{2,\text{ref}})$ values below 0 ($\text{CO}_2 < 280$ ppm: coldest climates), and 3.7 K for values above 0.69 ($\text{CO}_2 > 560$ ppm: warmest climates), a reduction of 65%. These values are equivalent to 7.3 K and 2.6 K per CO_2 doubling respectively. Hence, ESS is not constant, in contrast with

the implicit assumption in Van de Wal et al. (2011). In fact, in our model ESS is stronger at lower CO₂. This is similar to the findings of Hansen et al. (2013), who performed CO₂ doubling experiments using the simplified atmosphere-ocean model of Russell et al. (1995). However, their ESS decrease is less strong, as it drops from ~6 per CO₂ doubling from 155 to 310 ppm CO₂ to ~5.5 K from 620 to 1240 ppm (see their Fig. 8b). They eventually also find increased sensitivity again at very high CO₂ levels (2480 to 9920 ppm), which is outside the range we simulate during our time span.

In our ice uncoupled run, the slope of the relation between CO₂ and global temperature reduces by only 46 % from 5.6 K to 3.0 K going from the coldest to the warmest $\ln(\text{CO}_2/\text{CO}_{2,\text{ref}})$ regime (Fig. 8, blue dots). In this case, the standard error of a linear regression through all data points is reduced by 58 % with respect to the fully coupled run, from 0.0050 K to 0.0021 K. The fact that the relation between $\ln(\text{CO}_2/\text{CO}_{2,\text{ref}})$ and global temperature is better approximated by a linear fit when land ice is uncoupled means the $\log(\text{CO}_2)$ -T relation is more linear. Hence, climate sensitivity is more constant. However, even when ice sheets are kept at PD level, the relation between logarithmic CO₂ and global temperature shows a declining slope (Fig. 8, blue dots). Therefore, decreased sensitivity at higher CO₂ is not only determined by reduced ice volume variability. This finding may be compared to the hybrid data-model results for climate sensitivity of Köhler et al. (2015), as well as to the modeled climate sensitivity of Friedrich et al. (2016). Köhler et al. (2015) investigated the relation between the radiative forcing of proxy-data CO₂ (Petit et al., 1999; Siegenthaler et al., 2005; Lüthi et al., 2008; Hönisch et al., 2009) - which is linearly related to logarithmic CO₂ (Myhre et al., 1998) - and modeled global temperature (De Boer et al., 2014, scaled). Friedrich et al. (2016) forced the intermediate complexity climate model LOVECLIM over the past 800 kyr using the ice core record (Petit et al., 1999; Siegenthaler et al., 2005; Lüthi et al., 2008) and a Northern Hemispheric ice sheet reconstruction (Ganopolski and Calov, 2011). The resulting climate sensitivity of these studies is opposite to ours, as they show increased climate sensitivity at higher CO₂ concentrations. These studies, however, consider a smaller range of CO₂. Furthermore, they calculate climate sensitivity in a different way. They do take into account ice volume variations, but compensate for their effect by adding their radiative forcing to the forcing induced by CO₂ variations (see PALAEOSENS Project Members, 2012). Implicitly assumed in their approach is that these radiative forcings have the same effect on temperature, which may not generally be the case (Yoshimori et al., 2011). The difference between the results of our model and these studies could point to contrasting strengths of the fast feedbacks in the climate system, which is material for future investigation. Our findings are in agreement with Ritz et al. (2011), who used a two-dimensional energy balance climate model that showed an increase of climate sensitivity from 3.0 K per CO₂ doubling at PI conditions to 4.3 K at LGM conditions.

The coldest global temperature anomaly in our results is amplified by 79 % (factor 1.79) if land ice changes are incorporated, by 50 % if only albedo is coupled (Fig. 8, black dots), and by 4 % if only surface height is coupled (Fig. 8, orange dots). The warmest anomaly is only increased by 21 % (factor 1.21) when ice is coupled, by 9 % when only albedo is coupled, and by 3 % when only surface height is coupled. This means the surface-height-temperature feedback becomes relatively more important in warmer climates.

The influence of ice sheets on the climate is strongest in the region where they are situated, leading to increased polar amplification. This is demonstrated by the relations between global temperature and Northern Hemispheric (40 to 80° N, Fig. 9a), and Antarctic temperature (60 to 90° S, Fig. 9b). In the Northern Hemisphere, the minimum local temperature with

respect to PI is -2.0 K in the uncoupled case, and -9.5 K in the run with fully coupled land ice. When only the albedo or surface height changes are coupled, the Northern Hemispheric temperature anomaly reaches -6.4 K and -2.8 K low points respectively. Conversely, the amount of land ice lost in warmer climates is relatively small, as only the Greenland ice sheet (~ 7 m.s.l.e.) is left to melt. Consequently, the Northern Hemispheric temperature is then not affected much by not including land ice changes.

5 The remaining polar amplification in the Northern Hemisphere is hence mostly caused by other factors, such as sea ice and snow cover variability. In the Southern Hemisphere, the lowest temperature is similar for the coupled and uncoupled simulations, although it is achieved at a higher global temperature in the uncoupled case. These Southern Hemispheric temperatures are similarly low because the Antarctic ice sheet grows relatively little in size towards colder-than-PI conditions (see also Stap et al., 2014). When Antarctica is allowed to melt in warm climates, however, the local temperature increase becomes much

10 stronger: 11.6 instead of 5.9 K with respect to PI. In these conditions, we find that coupling albedo changes leads to a maximum Antarctic temperature anomaly of only 7.0 K (Fig. 9b, black dots). When only surface height changes are coupled, this anomaly reaches 7.4 K (Fig. 9b, orange dots). This result implies that albedo changes are relatively less important in Antarctica than in the high latitudes of the Northern Hemisphere. The reason is that the Antarctic continent remains snow covered throughout most of the year when the land ice retreats, which reduces the albedo change (see also Stap et al., 2016a). Since temperature

15 changes are strongest in the Southern Hemisphere in warmer-than-PI climates, this explains the increased relative importance of the surface-height-temperature feedback on ESS in these climates. The different response of the northern and southern high latitudes to CO_2 changes challenges the approach of De Boer et al. (2010) and De Boer et al. (2012), who reconstructed a single high-latitude temperature anomaly. Furthermore, their record cannot readily be translated to global conditions by a constant factor (as is done in e.g Martínez-Botí et al., 2015), because the conversion depends on the prevailing climate state.

20 This problem with recalculating high latitude values in terms of global mean changes also holds for other local proxy data like marine, terrestrial or ice core records.

Finally, we compare the relation between global temperature and logarithmic CO_2 in three model runs with uncoupled ice (Fig. 10). In one run the ice sheets are kept at PD condition as before (now called PD ice, blue dots), in another one we use the LGM condition (LGM ice, black dots), and in the last one all ice is removed (no ice, red dots). Naturally, the more ice is

25 present on Earth, the colder the climate becomes, so the LGM ice run is colder than the PD ice run, which in turn is colder than the no ice run. The difference between the PD ice and the no ice run is fairly uniform over the whole CO_2 range. The difference between the LGM ice and the no ice run, however, is larger in cold climates than in warm climates as it shrinks from ~ 2.8 to ~ 1.6 K. This is explained by the extra land ice in the LGM ice run cooling the climate and increasing the area on Earth covered by snow and sea ice. As a result of this area increase, the land surface has a higher albedo, which cools the climate

30 further. In cold climates this effect is stronger because the snow- and sea ice-covered area grows more towards the equator, where there is more incoming solar radiation. Consequently, the albedo increase is more effective as it leads to absorption of more energy, and thus to a stronger temperature decrease.

5 Summary and conclusions

We have presented mutually consistent transient simulations of atmospheric CO₂ content, temperature, ice volume and benthic δ¹⁸O over the past 38 million years. They were obtained using a coupling between a zonally averaged energy balance climate model and a one-dimensional ice sheet model. As forcing, we have used an inverse routine that yields atmospheric CO₂ from an observed benthic δ¹⁸O record (Zachos et al., 2008). This allowed us to simulate periods before 800 kyr ago, for which ice core records are not available and CO₂ data are uncertain, scarce and intermittent (Beerling and Royer, 2011). Focusing on long-term interactions between land ice and climate, we have taken a complementary approach to snap-shot and short timescale simulations that have been published before (e.g. Langebroek et al., 2010; Ladant et al., 2014; Gasson et al., 2014; Pollard et al., 2015). Our coupled model results represent an improvement upon the work of De Boer et al. (2010), who used the same ice sheet model in stand-alone form to simulate the past 40 Myr (De Boer et al., 2010, 2012). The inclusion of a climate model has enabled us to simulate, and force the different ice sheets with, seasonal meridional temperature distributions instead of globally uniform perturbations to present-day climate with a fixed seasonal cycle. Nonetheless, we recognise that our coupled ice sheet-model is relatively simple. It does not include ice-shelf dynamics and sophisticated grounding line parameterisations (Pollard and DeConto, 2012; Pollard et al., 2015). **The physics in our model are not detailed enough to simulate sub-millennial climate dynamics, which could have important consequences on for instance tropical atmospheric circulation (Mulitza et al., 2008).** However, more complex models, such as GCMs coupled to three-dimensional thermodynamic ice models, are as of yet not suitable to perform multi-million year integrations because of limited computer power. Our results therefore serve as a reference, to which results of these more sophisticated models can be compared once they are achieved. This facilitates an analysis of which features appear in the full hierarchy of models and which are specific to more comprehensive models including more physics. Furthermore, by comparing our fully coupled simulation to model runs with the ice-albedo feedback, or the surface-height-temperature feedback, or both switched off, we have quantified the effect of ice-sheet climate interactions on Earth System Sensitivity (ESS) and polar amplification on long time scales.

In our model, the results for CO₂ concentrations lower than roughly 450 ppm depend on the transient evolution of CO₂. When during the run the model has previously experienced high CO₂ values, temperatures are higher than when this is not the case. This hysteresis is persistent even in runs without any change in albedo due to snow, sea-ice or permanent land-ice cover and without changes in ocean overturning strength. However, these factors do enhance it. **The hysteresis is most likely a consequence of the temperature dependency of the energy balance calculations. This is suggested by the fact that the model converges to a different steady-state energy imbalance at the top of the atmosphere, and therefore a different climate state, depending on the history of the run. It is still unknown whether this behaviour is also exhibited by other models.** We therefore suggest that in the future, climate models should be tested for this behaviour by confronting them with high CO₂ values before simulating cooler climates. **In our case, it leads to unrealistically low simulated CO₂ values over roughly the past 13 Myr in our long 38-Myr simulation when CO₂ levels are below 450 ppm, to compensate for the higher temperatures. We have therefore retuned the model, by changing the uncertain cloud optical thickness parameter. This leads to lower temperatures at the same CO₂ levels, such that higher CO₂ concentrations are sufficient to obtain the same temperatures. After retuning, the**

simulated CO₂ over the past 800,000 years is in reasonable agreement with the ice-core record again. The relations between CO₂ and temperature, as well as between high- and low-latitude temperatures, are now different. However, the influence of ice sheet-climate interactions on ESS and polar amplification remains qualitatively the same.

As was already demonstrated in Stap et al. (2016b), our model is unable to capture the difference in CO₂ suggested by proxy data between the time right before the Eocene-Oligocene Transition (~34 Myr ago) and during the Middle Miocene Climatic Optimum (~15 Myr ago). This is because the forcing benthic $\delta^{18}\text{O}$ values are similar during these times. Our simulation of CO₂ may be improved by extending the model with more aspects of the climate system, moving towards a full Earth System Model. Important aspects hitherto neglected in our model are the effects of dynamic vegetation (e.g. Knorr et al., 2011; Liakka et al., 2014; Hamon et al., 2012), and changing topographic boundary conditions as a result of tectonics and erosion (Wilson et al., 2012; Gasson et al., 2015; Stap et al., 2016b). Ultimately, the model could also be coupled to a carbon cycle model, e.g. BICYCLE (Köhler and Fischer, 2004), in order to simulate climate using only insolation data as input.

In our model, ice volume changes enhance the modeled effect of CO₂ on temperature via the ice-albedo and the surface-height-temperature feedbacks, particularly in the regions where the ice sheets are located. At low CO₂ values, the Northern Hemispheric ice sheets change in size, causing large fluctuations in the temperature on this hemisphere. The ice-albedo feedback is much stronger than the surface-height-temperature feedback in these conditions (see also Stap et al., 2014). This is reflected in the Northern Hemispheric (40 to 80° N), Antarctic (60 to 90° S), and global temperature profiles. At intermediate CO₂ values, there is only weaker land ice volume variability, as in the Northern Hemisphere there is little land ice left to melt, and in the Southern Hemisphere it is not yet warm enough for deglaciation of Antarctica. Consequently, temperature changes are only minorly enhanced, both locally and globally. At high CO₂ values, the Antarctic ice sheet is more dynamic, so that temperature changes more strongly on the Southern Hemisphere. Here, the impact of the ice-albedo feedback is weaker, since most of the continent remains snow-covered during large parts of the year when the ice sheet retreats. Hence, the surface-height-temperature feedback becomes relatively more important. When the ice sheets are kept constant, temperature perturbations are much less strong and more uniformly distributed over the globe.

Author contributions. L.B.S., R.S.W.v.d.W. and B.d.B. designed the research. B.d.B., R.B., and L.B.S. developed the model. L.B.S. conducted the model runs and analysis, to which R.S.W.v.d.W. and B.d.B. contributed. L.B.S. drafted the manuscript, with contributions from all co-authors.

Competing interests. The authors declare that they have no conflict of interest.

Acknowledgements. We thank four anonymous reviewers for providing useful suggestions, which helped to improve the quality of the paper. We further thank Edward Gasson for sharing his data. Financial support for L.B. Stap was provided by the Netherlands Organisation of Scientific Research (NWO), grant NWO-ALW. Bas de Boer is funded by NWO Earth and Life Sciences (ALW), project 863.15.019. This paper contributes to the gravity program "Reading the past to project the future", funded by the Netherlands Organisation for Scientific Research (NWO).

References

- Badger, M. P. S., Schmidt, D. N., Mackensen, A., and Pancost, R. D.: High-resolution alkenone palaeobarometry indicates relatively stable pCO₂ during the Pliocene (3.3–2.8 Ma), *Philosophical Transactions of the Royal Society of London A: Mathematical, Physical and Engineering Sciences*, 371, 20130094, 2013.
- 5 Beerling, D. J. and Royer, D. L.: Convergent Cenozoic CO₂ history, *Nature Geoscience*, 4, 418–420, 2011.
- Berger, A., Li, X. S., and Loutre, M.-F.: Modelling Northern Hemisphere ice volume over the last 3Ma, *Quaternary Science Reviews*, 18, 1–11, 1999.
- Bintanja, R.: The parameterization of shortwave and longwave radiative fluxes for use in zonally averaged climate models, *Journal of Climate*, 9, 439–454, 1996.
- 10 Bintanja, R.: Sensitivity experiments performed with an energy balance atmosphere model coupled to an advection-diffusion ocean model, *Theoretical and Applied climatology*, 56, 1–24, 1997.
- Bintanja, R. and Oerlemans, J.: The effect of reduced ocean overturning on the climate of the Last Glacial Maximum, *Climate Dynamics*, 12, 523–533, 1996.
- Bintanja, R. and Van de Wal, R. S. W.: North American ice-sheet dynamics and the onset of 100,000-year glacial cycles, *Nature*, 454, 869–872, 2008.
- 15 Bintanja, R., van de Wal, R. S. W., and Oerlemans, J.: Modelled atmospheric temperatures and global sea levels over the past million years, *Nature*, 437, 125–128, 2005.
- Botsyun, S., Sepulchre, P., Risi, C., and Donnadieu, Y.: Impacts of Tibetan Plateau uplift on atmospheric dynamics and associated precipitation $\delta^{18}\text{O}$, *Climate of the Past*, 12, 1401–1420, doi:10.5194/cp-12-1401-2016, 2016.
- 20 Chappell, J. and Shackleton, N. J.: Oxygen isotopes and sea level, *Nature*, 324, 137–140, 1986.
- Cramer, B. S., Toggweiler, J. R., Wright, J. D., Katz, M. E., and Miller, K. G.: Ocean overturning since the Late Cretaceous: Inferences from a new benthic foraminiferal isotope compilation, *Paleoceanography*, 24, 2009.
- Cuffey, K. M.: Methodology for use of isotopic climate forcings in ice sheet models, *Geophysical Research Letters*, 27, 3065–3068, 2000.
- De Boer, B., Van de Wal, R. S. W., Bintanja, R., Lourens, L. J., and Tuenter, E.: Cenozoic global ice-volume and temperature simulations with 1-D ice-sheet models forced by benthic $\delta^{18}\text{O}$ records, *Annals of Glaciology*, 51, 23–33, 2010.
- 25 De Boer, B., Van de Wal, R. S. W., Lourens, L. J., and Bintanja, R.: Transient nature of the Earth's climate and the implications for the interpretation of benthic $\delta^{18}\text{O}$ records, *Palaeogeography, Palaeoclimatology, Palaeoecology*, 335, 4–11, 2012.
- De Boer, B., Van de Wal, R. S. W., Lourens, L. J., Bintanja, R., and Reerink, T. J.: A continuous simulation of global ice volume over the past 1 million years with 3-D ice-sheet models, *Climate Dynamics*, 41, 1365–1384, 2013.
- 30 De Boer, B., Lourens, L. J., and Van de Wal, R. S. W.: Persistent 400,000-year variability of Antarctic ice volume and the carbon cycle is revealed throughout the Plio-Pleistocene, *Nature communications*, 5, 2014.
- DeConto, R. M. and Pollard, D.: Rapid Cenozoic glaciation of Antarctica induced by declining atmospheric CO₂, *Nature*, 421, 245–249, 2003.
- DeConto, R. M., Pollard, D., Wilson, P. A., Pälike, H., Lear, C. H., and Pagani, M.: Thresholds for Cenozoic bipolar glaciation, *Nature*, 455, 652–656, 2008.
- 35 Duplessy, J.-C., Labeyrie, L., and Waelbroeck, C.: Constraints on the ocean oxygen isotopic enrichment between the Last Glacial Maximum and the Holocene: Paleoceanographic implications, *Quaternary Science Reviews*, 21, 315–330, 2002.

- Elderfield, H., Ferretti, P., Greaves, M., Crowhurst, S., McCave, I. N., Hodell, D., and Piotrowski, A. M.: Evolution of ocean temperature and ice volume through the Mid-Pleistocene climate transition, *Science*, 337, 704–709, 2012.
- Foster, G. L. and Rohling, E. J.: Relationship between sea level and climate forcing by CO₂ on geological timescales, *Proceedings of the National Academy of Sciences*, 110, 1209–1214, 2013.
- 5 Foster, G. L., Lear, C. H., and Rae, J. W. B.: The evolution of pCO₂, ice volume and climate during the middle Miocene, *Earth and Planetary Science Letters*, 341, 243–254, 2012.
- Friedrich, T., Timmermann, A., Tigchelaar, M., Timm, O. E., and Ganopolski, A.: Nonlinear climate sensitivity and its implications for future greenhouse warming, *Science Advances*, 2, e1501923, 2016.
- Ganopolski, A. and Calov, R.: The role of orbital forcing, carbon dioxide and regolith in 100 kyr glacial cycles, *Climate of the Past*, 7,
10 1415–1425, 2011.
- Gasson, E.: The past relationship between temperature and sea level – from proxy records and ice sheet modeling, PhD thesis, University of Bristol, Bristol, United Kingdom, 2013.
- Gasson, E., Siddall, M., Lunt, D. J., Rackham, O. J. L., Lear, C. H., and Pollard, D.: Exploring uncertainties in the relationship between temperature, ice volume, and sea level over the past 50 million years, *Reviews of Geophysics*, 50, 2012.
- 15 Gasson, E., Lunt, D. J., DeConto, R. M., Goldner, A., Heinemann, M., Huber, M., LeGrande, A. N., Pollard, D., Sago, N., Siddall, M., Winguth, A., and Valdes, P. J.: Uncertainties in the modelled CO₂ threshold for Antarctic glaciation, *Climate of the Past*, 10, 451, 2014.
- Gasson, E., DeConto, R. M., and Pollard, D.: Antarctic bedrock topography uncertainty and ice sheet stability, *Geophysical Research Letters*, 42, 5372–5377, 2015.
- Gasson, E., DeConto, R. M., Pollard, D., and Levy, R. H.: Dynamic Antarctic ice sheet during the early to mid-Miocene, *Proceedings of the
20 National Academy of Sciences*, 113, 3459–3464, 2016.
- Greenop, R., Foster, G. L., Wilson, P. A., and Lear, C. H.: Middle Miocene climate instability associated with high-amplitude CO₂ variability, *Paleoceanography*, 29, 845–853, 2014.
- Hamon, N., Sepulchre, P., Donnadiou, Y., Henrot, A.-J., François, L., Jaeger, J.-J., and Ramstein, G.: Growth of subtropical forests in Miocene Europe: the roles of carbon dioxide and Antarctic ice volume, *Geology*, 40, 567–570, 2012.
- 25 Hamon, N., Sepulchre, P., Lefebvre, V., and Ramstein, G.: The role of eastern Tethys seaway closure in the Middle Miocene Climatic Transition (ca. 14 Ma), *Climate of the Past*, 9, 2687–2702, 2013.
- Hansen, J., Sato, M., Russell, G., and Kharecha, P.: Climate sensitivity, sea level and atmospheric carbon dioxide, *Philosophical Transactions of the Royal Society of London A: Mathematical, Physical and Engineering Sciences*, 371, 20120294, 2013.
- Haywood, A. M., Dowsett, H. J., Dolan, A. M., Chandler, M. A., Hunter, S. J., and Lunt, D. J.: The Pliocene Model Intercomparison Project
30 (PlioMIP) Phase 2: scientific objectives and experimental design, *Climate of the Past*, 12, 663, 2016.
- Herbert, T. D., Lawrence, K. T., Tzanova, A., Peterson, L. C., Caballero-Gill, R., and Kelly, C. S.: Late Miocene global cooling and the rise of modern ecosystems, *Nature Geoscience*, 2016.
- Hönisch, B., Hemming, N. G., Archer, D., Siddall, M., and McManus, J. F.: Atmospheric carbon dioxide concentration across the mid-Pleistocene transition, *Science*, 324, 1551–1554, 2009.
- 35 Kendall, R. A., Mitrovica, J. X., and Milne, G. A.: On post-glacial sea level–II. Numerical formulation and comparative results on spherically symmetric models, *Geophysical Journal International*, 161, 679–706, 2005.
- Kennett, J. P.: Cenozoic evolution of Antarctic glaciation, the circum-Antarctic Ocean, and their impact on global paleoceanography, *Journal of Geophysical Research*, 82, 3843–3860, 1977.

- Knorr, G., Butzin, M., Micheels, A., and Lohmann, G.: A warm Miocene climate at low atmospheric CO₂ levels, *Geophysical Research Letters*, 38, 2011.
- Köhler, P. and Fischer, H.: Simulating changes in the terrestrial biosphere during the last glacial/interglacial transition, *Global and Planetary Change*, 43, 33–55, 2004.
- 5 Köhler, P., de Boer, B., von der Heydt, A. S., Stap, L. B., and van de Wal, R. S. W.: On the state dependency of the equilibrium climate sensitivity during the last 5 million years, *Climate of the Past*, 11, 1801–1823, doi:10.5194/cp-11-1801-2015, 2015.
- Kominz, M. A., Browning, J. V., Miller, K. G., Sugarman, P. J., Mizintseva, S., and Scotese, C. R.: Late Cretaceous to Miocene sea-level estimates from the New Jersey and Delaware coastal plain coreholes: An error analysis, *Basin Research*, 20, 211–226, 2008.
- Kürschner, W. M.: Leaf stomata as biosensors of palaeoatmospheric CO₂ levels, *LPP Contributions Series*, 5, 1–153, 1996.
- 10 Kürschner, W. M., Kvaček, Z., and Dilcher, D. L.: The impact of Miocene atmospheric carbon dioxide fluctuations on climate and the evolution of terrestrial ecosystems, *Proceedings of the National Academy of Sciences*, 105, 449–453, 2008.
- Kutzbach, J. E., Prell, W. L., and Ruddiman, W. F.: Sensitivity of Eurasian climate to surface uplift of the Tibetan Plateau, *The Journal of Geology*, 101, 177–190, 1993.
- Ladant, J.-B., Donnadieu, Y., Lefebvre, V., and Dumas, C.: The respective role of atmospheric carbon dioxide and orbital parameters on ice sheet evolution at the Eocene-Oligocene transition, *Paleoceanography*, 29, 810–823, doi:10.1002/2013PA002593, 2014.
- 15 Langebroek, P. M., Paul, A., and Schulz, M.: Simulating the sea level imprint on marine oxygen isotope records during the middle Miocene using an ice sheet-climate model, *Paleoceanography*, 25, 2010.
- Laskar, J., Robutel, P., Joutel, F., Gastineau, M., Correia, A. C. M., Levrard, B., et al.: A long-term numerical solution for the insolation quantities of the Earth, *Astronomy & Astrophysics*, 428, 261–285, 2004.
- 20 Lear, C. H., Elderfield, H., and Wilson, P. A.: Cenozoic deep-sea temperatures and global ice volumes from Mg/Ca in benthic foraminiferal calcite, *Science*, 287, 269–272, 2000.
- Lhomme, N., Clarke, G. K. C., and Ritz, C.: Global budget of water isotopes inferred from polar ice sheets, *Geophysical Research Letters*, 32, 2005.
- Liakka, J., Colleoni, F., Ahrens, B., and Hickler, T.: The impact of climate-vegetation interactions on the onset of the Antarctic ice sheet, *Geophysical Research Letters*, 41, 1269–1276, 2014.
- 25 Lisiecki, L. E. and Raymo, M. E.: A Pliocene-Pleistocene stack of 57 globally distributed benthic $\delta^{18}\text{O}$ records, *Paleoceanography*, 20, 2005.
- Lucarini, V. and Ragone, F.: Energetics of climate models: Net energy balance and meridional enthalpy transport, *Reviews of Geophysics*, 49, 2011.
- Lüthi, D., Le Floch, M., Bereiter, B., Blunier, T., Barnola, J.-M., Siegenthaler, U., Raynaud, D., Jouzel, J., Fischer, H., Kawamura, K., and Stocker, T. F.: High-resolution carbon dioxide concentration record 650,000–800,000 years before present, *Nature*, 453, 379–382, 2008.
- 30 Martínez-Botí, M., Foster, G., Chalk, T., Rohling, E., Sexton, P., Lunt, D., Pancost, R., Badger, M., and Schmidt, D.: Plio-Pleistocene climate sensitivity evaluated using high-resolution CO₂ records, *Nature*, 518, 49–54, 2015.
- Miller, K. G., Kominz, M. A., Browning, J. V., Wright, J. D., Mountain, G. S., Katz, M. E., Sugarman, P. J., Cramer, B. S., Christie-Blick, N., and Pekar, S. F.: The Phanerozoic record of global sea-level change, *Science*, 310, 1293–1298, 2005.
- 35 Mitrovica, J. X. and Milne, G. A.: On post-glacial sea level: I. General theory, *Geophysical Journal International*, 154, 253–267, 2003.
- Mudelsee, M., Bickert, T., Lear, C. H., and Lohmann, G.: Cenozoic climate changes: A review based on time series analysis of marine benthic $\delta^{18}\text{O}$ records, *Reviews of Geophysics*, 52, 333–374, 2014.

- Mulitza, S., Prange, M., Stuut, J.-B., Zabel, M., von Dobeneck, T., Itambi, A. C., Nizou, J., Schulz, M., and Wefer, G.: Sahel megadroughts triggered by glacial slowdowns of Atlantic meridional overturning, *Paleoceanography*, 23, 2008.
- Myhre, G., Highwood, E. J., Shine, K. P., and Stordal, F.: New estimates of radiative forcing due to well mixed greenhouse gases, *Geophysical Research Letters*, 25, 2715–2718, 1998.
- 5 North, G. R.: Theory of energy-balance climate models, *Journal of the Atmospheric Sciences*, 32, 2033–2043, 1975.
- Oerlemans, J.: Correcting the Cenozoic $\delta^{18}\text{O}$ deep-sea temperature record for Antarctic ice volume, *Palaeogeography, Palaeoclimatology, Palaeoecology*, 208, 195–205, 2004.
- Pagani, M., Arthur, M. A., and Freeman, K. H.: Miocene evolution of atmospheric carbon dioxide, *Paleoceanography*, 14, 273–292, 1999.
- Pagani, M., Huber, M., Liu, Z., Bohaty, S. M., Henderiks, J., Sijp, W., Krishnan, S., and DeConto, R. M.: The role of carbon dioxide during
10 the onset of Antarctic glaciation, *Science*, 334, 1261–1264, 2011.
- PALAEOSENS Project Members: Making sense of palaeoclimate sensitivity, *Nature*, 491, 683–691, 2012.
- Pearson, P. N., Foster, G. L., and Wade, B. S.: Atmospheric carbon dioxide through the Eocene–Oligocene climate transition, *Nature*, 461, 1110–1113, 2009.
- Petit, J.-R., Jouzel, J., Raynaud, D., Barkov, N. I., Barnola, J.-M., Basile, I., Bender, M., Chappellaz, J., Davis, M., Delaygue, G., Delmotte,
15 M., Kotlyakov, V. M., Legrand, M., Lipenkov, Y. V., Lorius, C., Pepin, L., Ritz, C., E. S., and Stievenard, M.: Climate and atmospheric history of the past 420,000 years from the Vostok ice core, Antarctica, *Nature*, 399, 429–436, 1999.
- Pollard, D.: A retrospective look at coupled ice sheet–climate modeling, *Climatic Change*, 100, 173–194, 2010.
- Pollard, D. and DeConto, R. M.: Hysteresis in Cenozoic Antarctic ice-sheet variations, *Global and Planetary Change*, 45, 9–21, 2005.
- Pollard, D. and DeConto, R. M.: Modelling West Antarctic ice sheet growth and collapse through the past five million years, *Nature*, 458,
20 329–332, 2009.
- Pollard, D. and DeConto, R. M.: Description of a hybrid ice sheet-shelf model, and application to Antarctica, *Geoscientific Model Development*, 5, 1273, 2012.
- Pollard, D., Kump, L. R., and Zachos, J. C.: Interactions between carbon dioxide, climate, weathering, and the Antarctic ice sheet in the earliest Oligocene, *Global and Planetary Change*, 111, 258–267, 2013.
- 25 Pollard, D., DeConto, R. M., and Alley, R. B.: Potential Antarctic Ice Sheet retreat driven by hydrofracturing and ice cliff failure, *Earth and Planetary Science Letters*, 412, 112–121, 2015.
- Retallack, G. J.: Greenhouse crises of the past 300 million years, *Geological Society of America Bulletin*, 121, 1441–1455, 2009.
- Ritz, S. P., Stocker, T. F., and Joos, F.: A coupled dynamical ocean-energy balance atmosphere model for paleoclimate studies, *Journal of Climate*, 24, 349–375, 2011.
- 30 Rohling, E. J., Grant, K., Bolshaw, M., Roberts, A. P., Siddall, M., Hemleben, C., and Kucera, M.: Antarctic temperature and global sea level closely coupled over the past five glacial cycles, *Nature Geoscience*, 2, 500, 2009.
- Rohling, E. J., Foster, G. L., Grant, K. M., Marino, G., Roberts, A. P., Tamisiea, M. E., and Williams, F.: Sea-level and deep-sea-temperature variability over the past 5.3 million years, *Nature*, 508, 477–482, 2014.
- Russell, G. L., Miller, J. R., and Rind, D.: A coupled atmosphere-ocean model for transient climate change studies, *Atmosphere-ocean*, 33,
35 683–730, 1995.
- Siegenthaler, U., Stocker, T. F., Monnin, E., Lüthi, D., Schwander, J., Stauffer, B., Raynaud, D., Barnola, J.-M., Fischer, H., Masson-Delmotte, V., and Jouzel, J.: Stable carbon cycle–climate relationship during the late Pleistocene, *Science*, 310, 1313–1317, 2005.

- Sosdian, S. and Rosenthal, Y.: Deep-sea temperature and ice volume changes across the Pliocene-Pleistocene climate transitions, *Science*, 325, 306–310, 2009.
- Stap, L. B., Van de Wal, R. S. W., De Boer, B., Bintanja, R., and Lourens, L. J.: Interaction of ice sheets and climate during the past 800 000 years, *Climate of the Past*, 10, 2135–2152, 2014.
- 5 Stap, L. B., De Boer, B., Ziegler, M., Bintanja, R., Lourens, L. J., and Van de Wal, R. S. W.: CO₂ over the past 5 million years: Continuous simulation and new $\delta^{11}\text{B}$ -based proxy data, *Earth and Planetary Science Letters*, 439, 1–10, 2016a.
- Stap, L. B., Van de Wal, R. S. W., De Boer, B., Bintanja, R., and Lourens, L. J.: The MMCO-EOT conundrum: same benthic $\delta^{18}\text{O}$, different CO₂, *Paleoceanography*, 31, doi:10.1002/2016PA002958., 2016b.
- Tigchelaar, M., Von Der Heydt, A. S., and Dijkstra, H. A.: A new mechanism for the two-step $\delta^{18}\text{O}$ signal at the Eocene-Oligocene boundary, *Climate of the Past*, 7, 235–247, 2011.
- 10 Toggweiler, J. R. and Bjornsson, H.: Drake Passage and palaeoclimate, *Journal of Quaternary Science*, 15, 319–328, 2000.
- Van de Wal, R. S. W., de Boer, B., Lourens, L. J., Köhler, P., and Bintanja, R.: Reconstruction of a continuous high-resolution CO₂ record over the past 20 million years, *Climate of the Past*, 7, 1459–1469, doi:10.5194/cp-7-1459-2011, 2011.
- Van der Burgh, J., Visscher, H., Dilcher, D. L., and Kürschner, W. M.: Paleoatmospheric signatures in Neogene fossil leaves, *Science*, 260, 15 1788–1788, 1993.
- Willeit, M., Ganopolski, A., Calov, R., Robinson, A., and Maslin, M.: The role of CO₂ decline for the onset of Northern Hemisphere glaciation, *Quaternary Science Reviews*, 119, 22–34, 2015.
- Wilson, D. S., Jamieson, S. S. R., Barrett, P. J., Leitchkov, G., Gohl, K., and Larter, R. D.: Antarctic topography at the Eocene-Oligocene boundary, *Palaeogeography, Palaeoclimatology, Palaeoecology*, 335, 24–34, 2012.
- 20 Wilson, D. S., Pollard, D., DeConto, R. M., Jamieson, S. S. R., and Luyendyk, B. P.: Initiation of the West Antarctic Ice Sheet and estimates of total Antarctic ice volume in the earliest Oligocene, *Geophysical Research Letters*, 40, 4305–4309, 2013.
- Yoshimori, M., Hargreaves, J. C., Annan, J. D., Yokohata, T., and Abe-Ouchi, A.: Dependency of feedbacks on forcing and climate state in physics parameter ensembles, *Journal of Climate*, 24, 6440–6455, 2011.
- Zachos, J. C., Dickens, G. R., and Zeebe, R. E.: An early Cenozoic perspective on greenhouse warming and carbon-cycle dynamics, *Nature*, 25 451, 279–283, 2008.
- Zhang, X., Lohmann, G., Knorr, G., and Purcell, C.: Abrupt glacial climate shifts controlled by ice sheet changes, *Nature*, 512, 290, 2014.

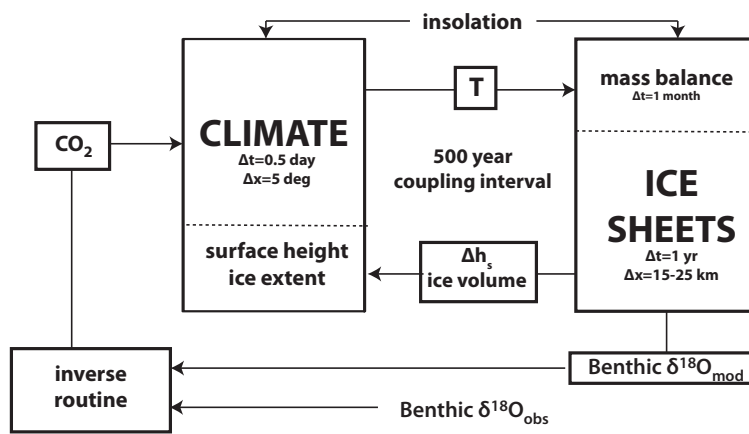


Figure 1. Schematic overview of the coupling of the zonally averaged energy balance climate model and the one-dimensional ice sheet model.

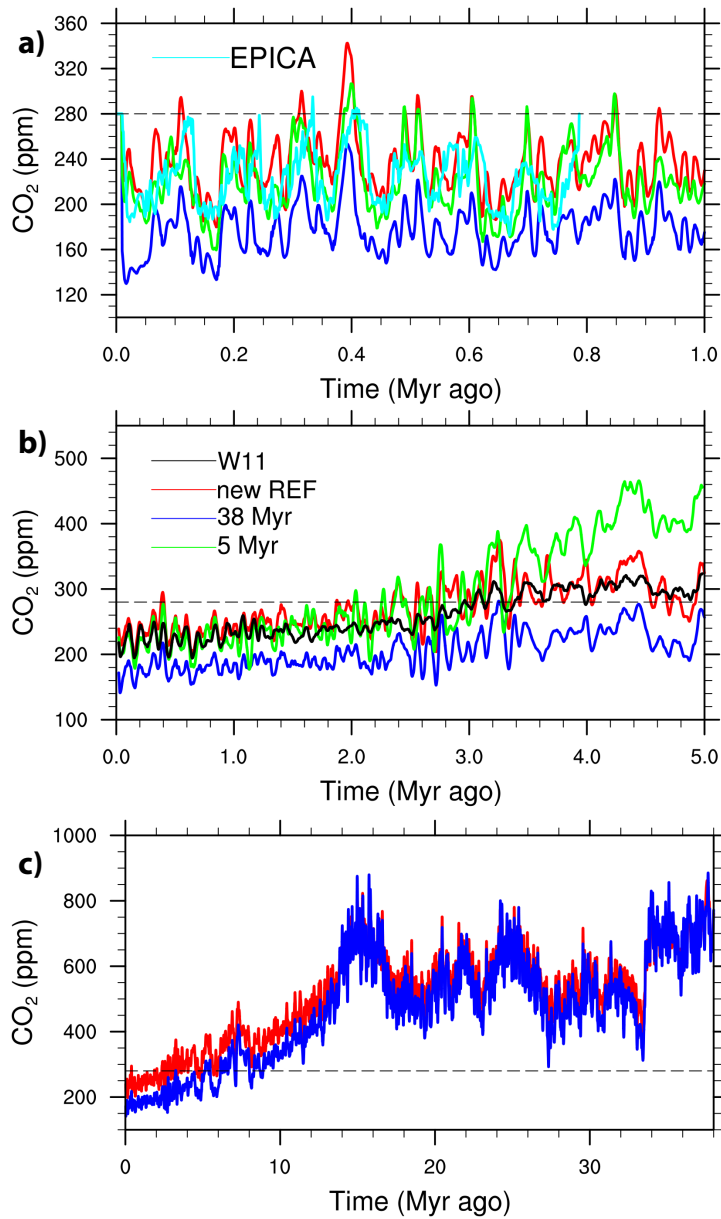


Figure 2. Atmospheric CO₂ over the past 1 Myr (a), the past 5 Myr (b) and the past 38 Myr (c). Shown are the 5-Myr run from Stap et al. (2016a) (green), the extended 38-Myr run from Stap et al. (2016b) (blue), the new reference run with altered cloud optical thickness (red), the hybrid proxy data-model reconstruction by Van de Wal et al. (2011) (W11; black), and the ice core record (Petit et al., 1999; Siegenthaler et al., 2005; Lüthi et al., 2008) (EPICA; cyan). The ice cores stem from Antarctica, the oldest values are from the EPICA Dome C core. Mind the differing y-scales. The dashed line shows the pre-industrial value (280 ppm). In panel (a) we do not show 40-kyr averages, but the 1-kyr output of the model.

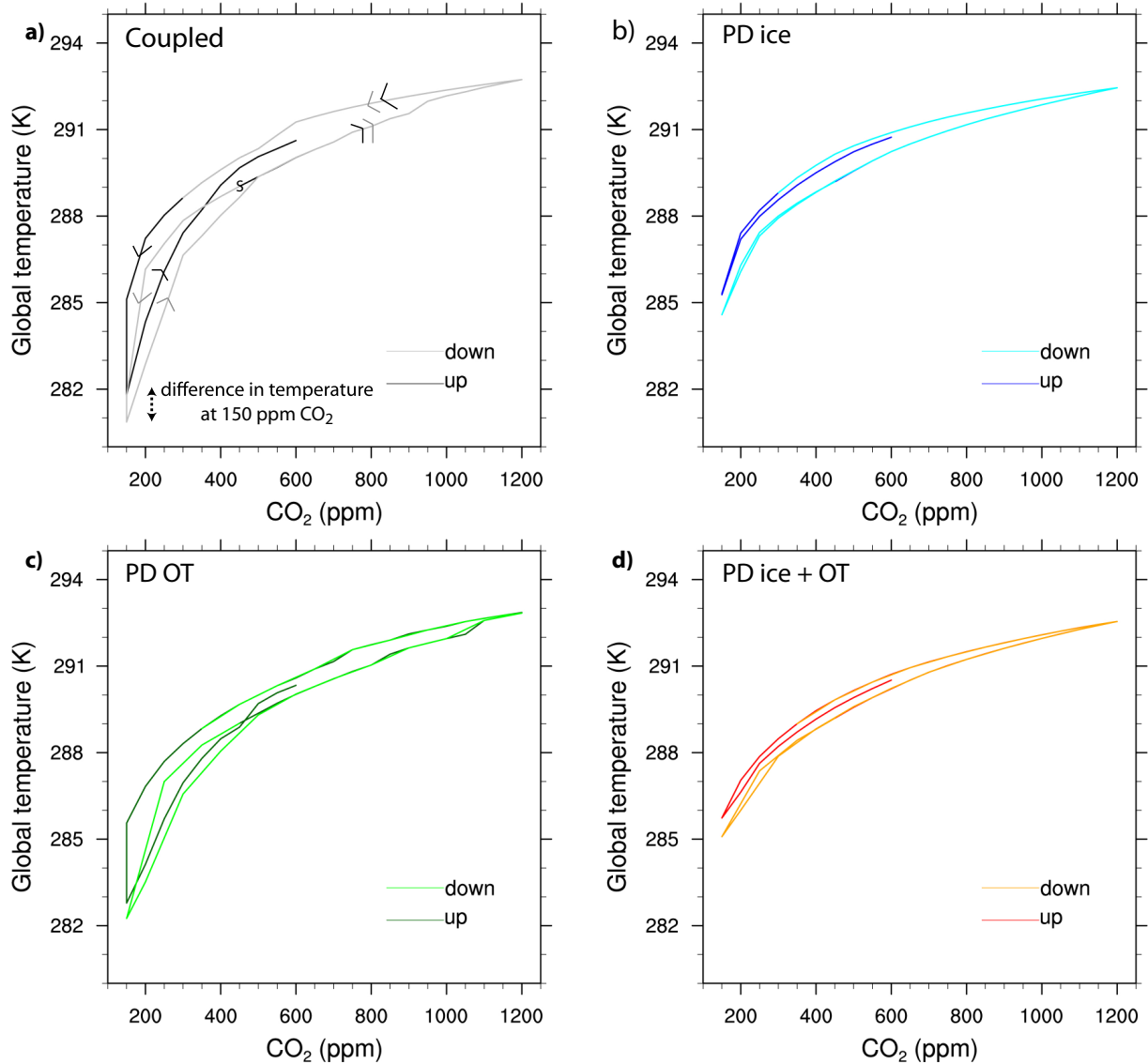


Figure 3. Relation between CO_2 and global temperature in the equilibrium runs. In (a), the fully coupled model output is shown. The starting point of the simulation at 450 ppm CO_2 is marked by an S, and the consequent evolution for both runs is marked by coloured arrows. The black line shows the up run, where CO_2 is increased first, the grey line shows the down run, where CO_2 is decreased first. At high CO_2 levels, the black line is overlaid by the grey line. In (b) the output with uncoupled ice (blue/cyan), in (c) with uncoupled ocean overturning strength (darkgreen/green) and in (d) with both these factors uncoupled (red/orange) are shown. The darker colors (blue, darkgreen, red) show the up runs, the lighter colors (cyan, green, orange) show the down runs. The startpoint and evolution are the same as in (a).

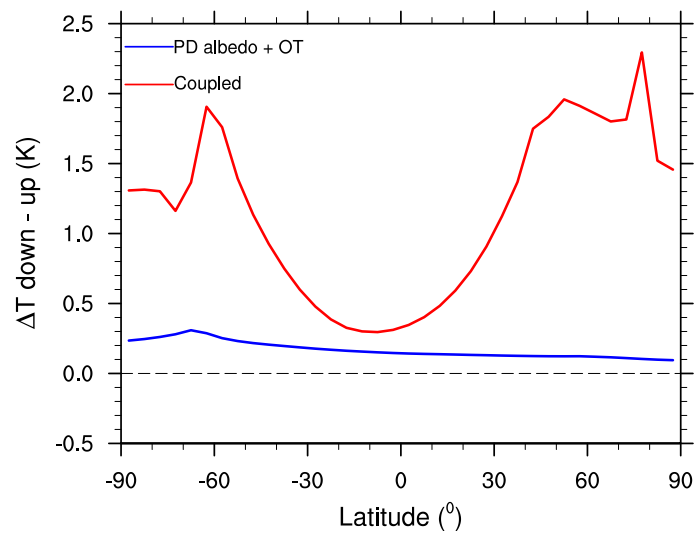


Figure 4. Atmospheric temperature difference at 150 ppm between the equilibrium runs (down - up), using the fully coupled set-up (red), and using fixed PD surface albedo and ocean overturning strength (blue).

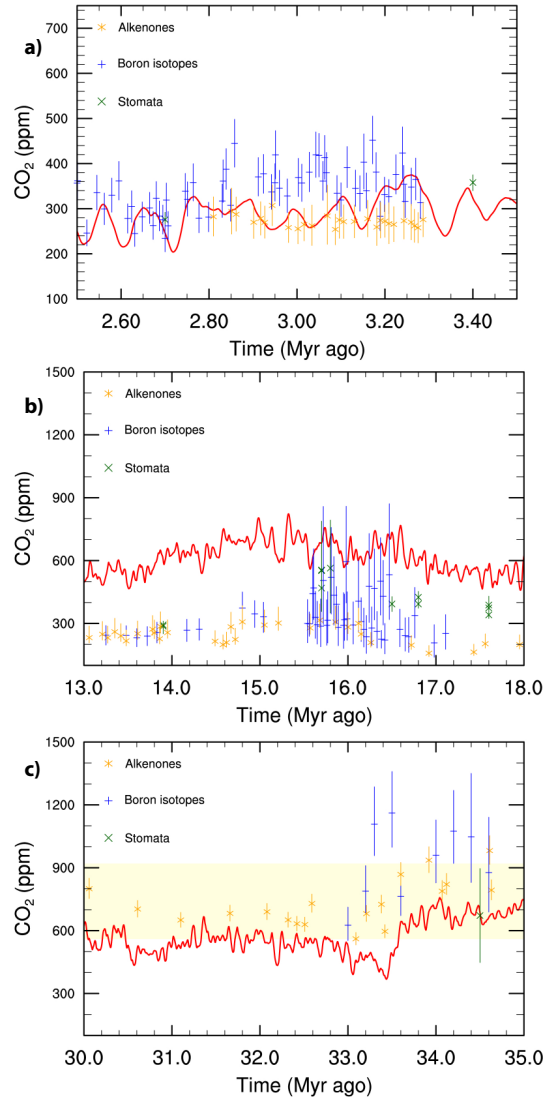


Figure 5. Simulated CO₂ concentrations of the new reference run (red line) for the (a) Late Pliocene (3.5 to 2.5 Myr ago), (b) Middle Miocene (18 to 13 Myr ago) and (c) Early Oligocene (35 to 30 Myr ago). Shown are 40-kyr running averages. Proxy-data reconstructions based on alkenones (Pagani et al., 1999, 2011; Badger et al., 2013) are indicated by orange asterisks. Boron-isotope-based data (Pearson et al., 2009; Foster et al., 2012; Greenop et al., 2014; Martínez-Botí et al., 2015) are indicated by blue plusses. Stomata-based data (Van der Burgh et al., 1993; Kürschner, 1996; Kürschner et al., 2008; Retallack, 2009) are indicated by green crosses. Yellow shading indicates the range of Antarctic glaciation values found by Gasson et al. (2014).

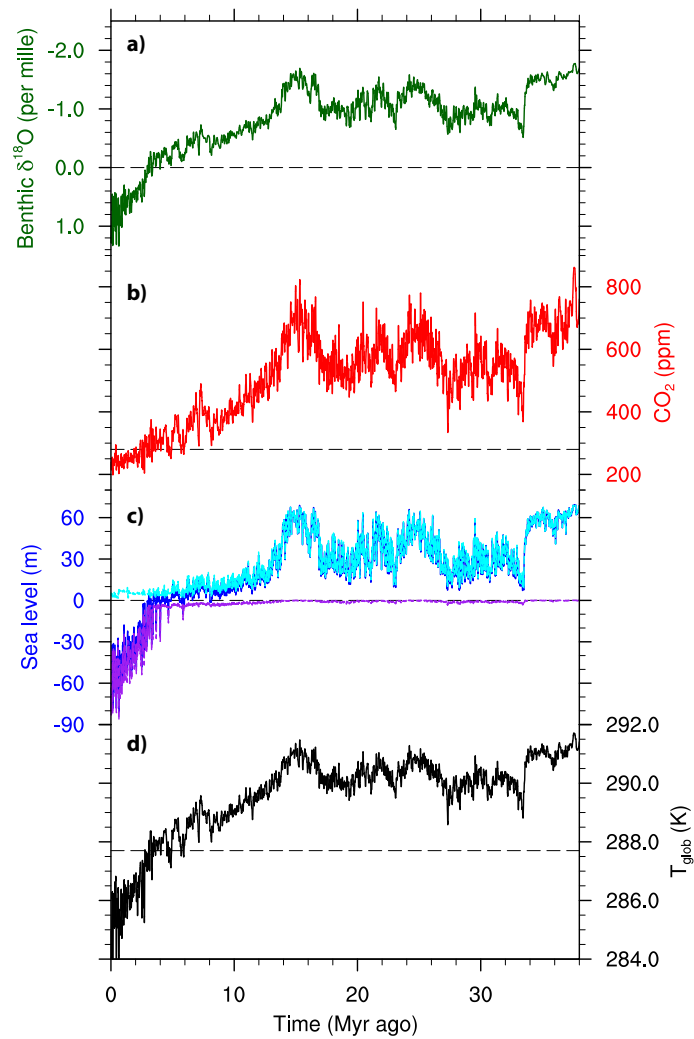


Figure 6. Results of the new reference run: (a) benthic $\delta^{18}\text{O}$, (b) atmospheric CO_2 , (c) ice-volume-equivalent sea level in meters above present day (blue), and contributions from the Northern Hemispheric (purple) and Antarctic ice sheets (cyan), (d) global mean temperature (T_{glob}). Shown are 40-kyr running averages. Dotted lines represent pre-industrial (PI) values.

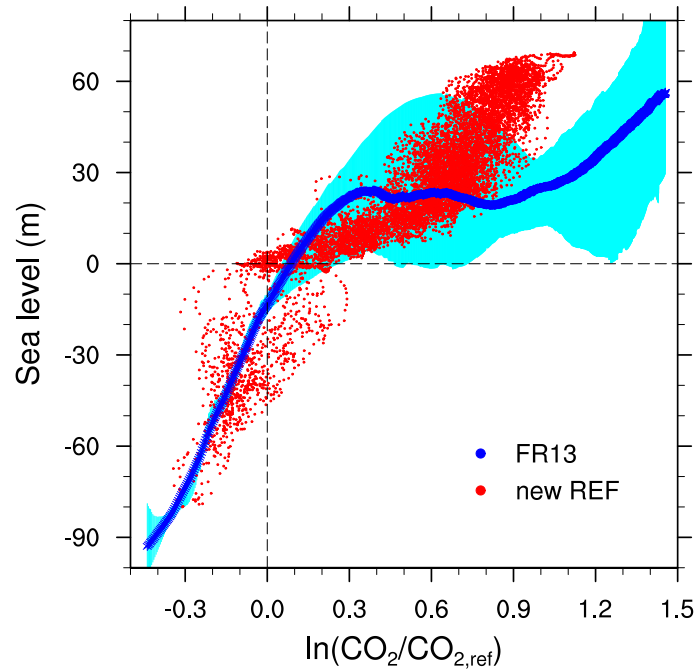


Figure 7. Relation between the logarithm of CO_2 divided by the PI value of 280 ppm, and ice-volume-equivalent sea level anomalies with respect to PI, for the reference simulation (red dots), compared to the median case of the probabilistic data analysis in Foster and Rohling (2013) (FR13, blue dots) with their 95% uncertainty range in cyan.

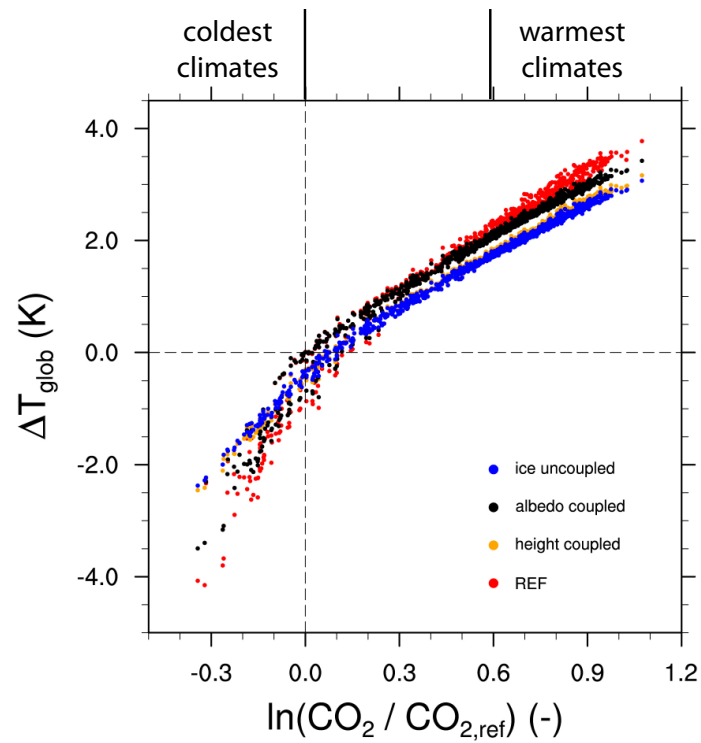


Figure 8. Relation between the logarithm of CO₂ divided by the PI value of 280 ppm, and global temperature anomalies with respect to PI (of the reference run), for the reference simulation (red dots), the simulation with uncoupled ice (blue dots) and the simulation with only surface height (orange dots) or albedo (black dots) coupled.

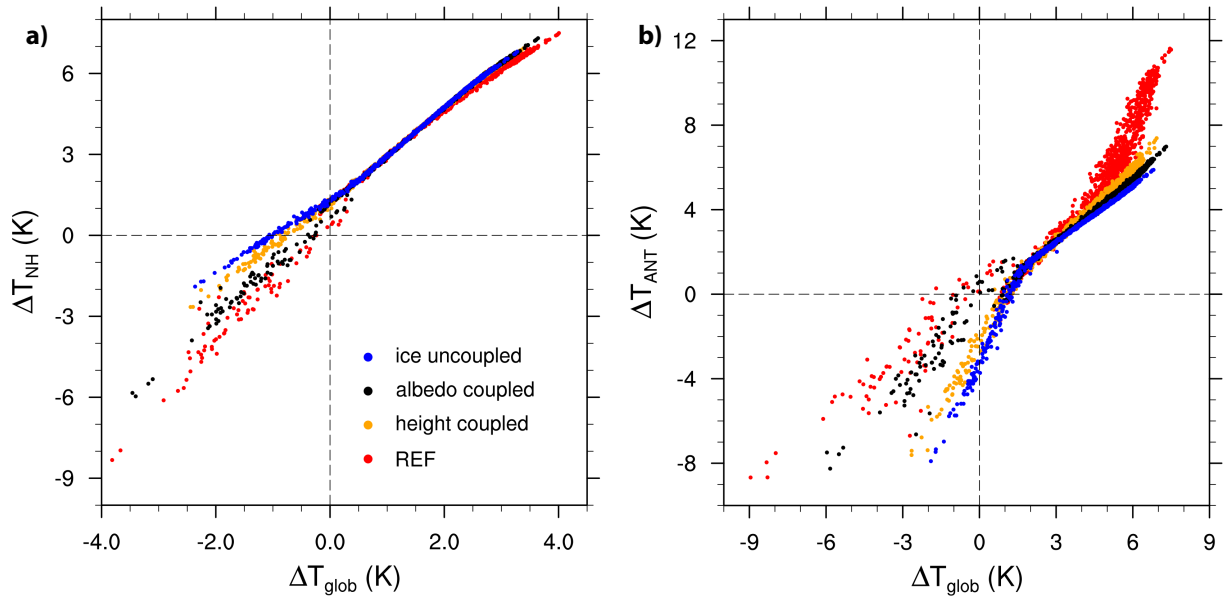


Figure 9. Relation between anomalies with respect to PI (of the reference run) of global temperature, and (a) Northern Hemispheric temperature (40 to 80° N), and (b) Antarctic temperature (60 to 90° S), for the reference simulation (red dots), the simulation with uncoupled ice (blue dots) and the simulation with only surface height (orange dots) or albedo (black dots) coupled.

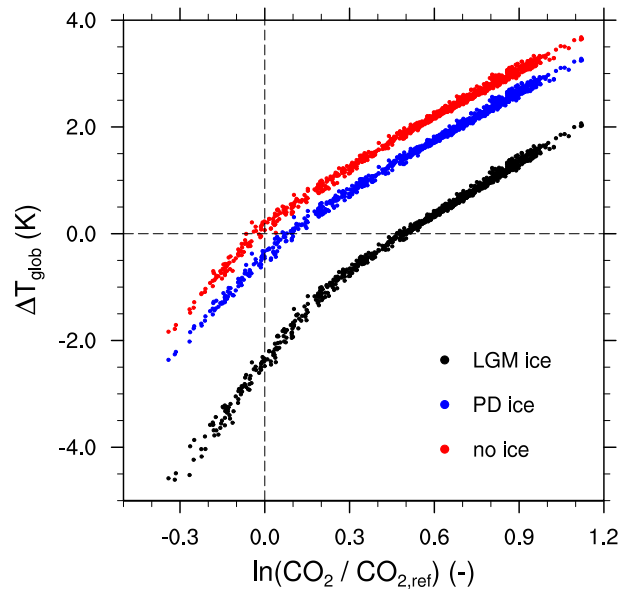


Figure 10. Relation between the logarithm of CO₂ divided by the PI value of 280 ppm, and global temperature anomalies with respect to PI (of the reference run), for the simulation with ice kept at PD level (blue dots), at LGM level (black dots) and the simulation with all land ice removed (red dots).