

Paleoclimate Paper: Response to Reviewers

Referee #1

Referee #1 requests two key areas in need of improvement in the paper: 1) revisions to Figures 5, 6, and 7 to facilitate understanding and interpretation of the paleoclimate data, and 2) additional information and explanation of the seasonality of different data sources and how this plays out in the reconstructions. We appreciate the recommendations and attention to detail and have corrected the manuscript as follows.

General corrections:

- Corrected axes, axis labels, panel labels, and legends for Figures 3, 4, 5, 6, and 7.
- Added explanations of the seasonality for each proxy in their descriptive sections, and noted these in the discussion of the features and trends in the multiproxy figures. The PDSI reconstruction is calculated for June, July, and August, which may help explain why it differs from the bog data.

Figure 4: This figure has 6 panels, adding the a, b, c, d, e, f for each panel is helpful for a smooth reading. Now the order of figure is confusing.

We added panel labels and changed the order of the panels to be more intuitive, moving from the most direct data comparisons (with the least uncertainty) to the more indirect comparisons (with more uncertainty).

Page15 line 9: Figure 5A, should be Figure 4e (New Long versus Deep Pond water elevations from southeastern MA for the past 7000 yrs).

Fixed.

Page15 line 12: Figure 5B should be Figure 4f (Deep Pond lake-level derived P-E reconstruction versus the mean annual precipitation reconstruction based on the mean of multiple records in the region).

Fixed.

Page15 line 19: Figure 5C should be Figure 4c (observed versus predicted paleohydrological variables, based on proxies found in lake and bog archives, and inferred using space-for-time paleoclimatic transfer functions and validated using cross-validation. Left: pollen data from (Marsicek et al., 2013)).

Fixed.

Page15 line 31: Figure 5D should be Figure 4d (observed versus predicted paleohydrological variables, based on proxies found in lake and bog archives, and inferred using space-for-time paleoclimatic transfer functions and validated using cross-validation. right: testate amoebae data from across North America (Booth, 2008)).

Fixed.

Page 16 line 4: Figure 5E should be Figure 4A (instrumental (observed) versus reconstructed values correlated in time. Left: NY PDSI for 1895-2000).

Fixed.

Page 16 line 23: Figure 1I should be Figure 1 or Figure 5I.

Fixed.

Page 16 line 24-26: The mean annual temperature anomalies based on pollen records from across North America from Vau et al. 2006 (Figure 5H) also show a long-term but more subtle decline.

Fixed.

Page 16 line 31-32: add more explanation on the reason why long-term difference between reconstruction by Williams et al. 2011 (Figure 5I) and Vau et al., 2006 (Figure 5H).

Added a paragraph on pg 17, line 6-15.

Figure 5: the x axis should not contain "0" for CE. Same for Figure 7.

Fixed.

Figure 6: add the loading legend. Which color indicates positive loading? Adding the a, b, c, d to each panel.

The sign of the loadings is arbitrary. The green on the map corresponds to the green temperature anomalies below, and likewise for the brown colors. Axis one scores are larger than Axis two scores, consistent with PCA more generally. We added labels to the panels.

Page 17 line 19-26. The sentence is not clear. Does brown line (Figure 6c) means temporal variations of EOF1?

The brown line refers to the negative loadings of EOF 1; we will clarify this sentence.

Page 18 line 12: during the past 9000 years should be 900 years. Figure 7c does not show clear long-term trend. Maybe it does not preserve low frequency signal so much.

Fixed.

Page 18 line 14-15: Could you give explanation why there is no correlation between tree-ring based PDSI and varve-based index? Both tree ring and varve records could be calibrated with instrumental data, but they are not correlated. Please give more information on reconstructed PDSI, seasonal PDSI? Or annual? Same as varve-based reconstruction.

The apparent lack of correlation calculated from the PDSI and varved record was due to differences in the spatial domain for the PDSI reconstruction; in fact the two series are well correlated, most strongly on a mean annual basis, but we edited this part of the text and removed the issue entirely.

Referee #2

Referee #2 requests a general revision of sections 3.3. and 3.4 (now sections 4.2 and 4.3) to improve the clarity and understanding of the data interpretation. We appreciate this feedback and agree that some restructuring of the text would be helpful. Currently, we describe the oldest features in the temperature and hydroclimate data, and move towards present, instead of walking through each of the proxies in some kind of priority order. We chose this approach because each of the proxies has different strengths and weaknesses, so in fact we would argue that there is not a natural “priority” as to which is best. In addition, a primary objective of the paper is to understand whether the proxies share common features and signals when considering them all together, which is why we use a chronological framework for interpreting the data. However, we appreciate that our approach is not clearly stated at the beginning of these sections, and thus may be confusing. To address this, we re-wrote these two sections for clarity based on the new ordering of the data in Figures 5 and 7. We also added an explanation at the top of section 4.2 explaining our reasoning. We also agree that grouping model data together will help reduce confusion in these sections, which we note in the specific comments below.

The sections 3.3 and 3.4 became 4.2 and 4.3 because we moved the Methods closer to the actual data analyses, and moved the discussion about the uncertainties directly after the proxy descriptions.

1) Page 3, line 29, I am confused with ‘bogs with groundwater-sourced inputs’. Do you mean that the bog is influenced by groundwater?

Pg 3, line 27: Yes, we clarified to say simply groundwater.

2) Page 10, line 13, please rephrase this sentence.

Pg 10, line 21: Removed “Newby and colleagues”.

3) Page 16, lines 18-21, it is important to clarify why the two reconstructions have very different trends considering both used the same dataset.

Agreed. We explain this also in our response to Referee #1, reproduced here: The reconstructions by Viau et al. 2006 and Williams et al. 2011 reflect differences in the underlying fossil pollen data, age models, the modern calibration datasets, and the reconstruction method, although the methodological differences are likely the least important factor. Viau et al. 2006 used 752 pollen records and 4590 modern calibration samples. We used 863 pollen records from Williams et al. 2011, which had updated age models based on linear interpolation between age controls (Williams et al. 2004) and 4833 modern calibration samples (Whitmore et al. 2005). Both studies used slightly different versions of the modern analogue technique,

which numerically compares the differences in fossil pollen composition of each sediment sample with the composition of each modern sample from a calibration dataset. The environmental characteristics of the most similar modern samples are then averaged and assigned to the target fossil sample (Williams et al. 2008).

Explanatory paragraph added on pg 17, line 6-15.

4) Page 18, lines 11-12 are confusing and need clarification. It is not the case by visual inspection.

We appreciate this note – this is an error from an earlier iteration of the figure and the text has been updated to reflect the new figure on Pg. 19 starting at line 8.

5) Page 20, line 6: Visual inspection did not show that bog water levels were lower at that time.

This is also correct and we fixed this text now at Pg. 21 line 10.

6) Figure 1: 'Proxy type' should be proxy type and sites? It is unclear that each of the pollen sites hosts a long-term climate history?

Agreed and fixed. We are not certain of the second question here. There is a long history of using pollen records to reconstruct climate, which we describe in the proxy section.

7) Figure 2: What do you mean by "E" in the Figure 2? It needs full name. The same is for Q, and others. Please check on the figure 2 to be sure all the descriptions are correct and complete.

This was indeed missing – E stands for "Evaporation." This was fixed in Fig. 2 and its caption.

8) Figure 3: it is confusing and somewhat misleading why the temporal resolution (vertical axis) of trees varies from seasonal to 100 years. Please clarify and confirm it. The same question is for modern/Historical instruments.

We changed the y-axis label to say "Temporal climate variability reflected by data type" to clarify and clarified associated text on pg. 4, line 12.

9) In Figure 4, bottom row, right panel: correct 'precipitation' as precipitation. What do you mean by 'NY, MN, and others'? Please provide the full name, and the compared common periods are also needed for clarification.

Fixed.

10) Figure 5: It would be more logical to arrange the simulation curves together. Anyway, the curves in Figure 5 need to be re-arranged. The pollen data F, H and I are very different from each other. Which is more reliable? The difference is caused due to regional temperature differences as identified in Figure 6 or different methods or dating uncertainties? More discussion is needed for clarification, rather than just listing them together. I don't know why the G and F figures were arranged reversely. Did the North central and northeastern US simulations correspond to the west and the Atlantic margin in Figure 6 respectively? Liu et al., 2010 did not match with Liu et al. 2009 in the reference list. The Liu et al. 2009 simulation represents a long-term decreasing trend which is similar to most of reconstructions, but it is different from reconstructions in term of on medium-frequency domains. Also, I miss some discussions on driving mechanism in the study region considering that they used the GCM simulation results. To my knowledge, Esper et al. (2012) identified an orbital forcing in tree-ring data in high NH latitudes (to the north of 65 degrees north latitude), but the forcing weakens quickly towards middle- and lower-latitudes. The study region in this manuscript is located in middle latitudes. Perhaps the orbital forcing is not strong or non-existing. Anyway, more discussion is helpful for mechanism hinted for the last 3000 years.

We agree that Figure 5 can be reorganized and explained in a clearer manner, grouping the model output in particular. The pollen data span different spatial scales, and for our domain the curve in panel I is the most reliable because it is specific to the northeastern U.S., and includes more records than the reconstruction in panel H (as explained above). This is noted in Pg. 17, line 14.

Regarding the north central and northeastern curves distinguished in the model data (panels G and J), yes, these do reflect areas similar to those highlighted by the EOF analysis in Figure 6. We explain this more clearly in the text now, and also correct the Liu et al. citation on the figure (it should be Liu et al. 2009). The mechanism behind the long-term decline in northern hemisphere temperatures observed in the pollen data and in the summer temperature simulations is orbital forcing, declining northern hemisphere summer insolation in particular (Liu et al., 2014). Clarified in Pg. 17 line 17.

Figure 7: The authors presented spatiotemporal patterns in the historical mean annual temperature anomalies from 1895 to 2010 as shown in Figure 6. Is it possible to organize or discuss the temperature variations over the last 3000 years separately for the east and west part of the study region, considering that the two parts of the study region represent very different temporal variations in temperature and it is possible that the same situation occurred in the past too. On the other hand, the Figure 6 represents the variations in mean annual temperature. It is recommended to present similar figures or results in the text because most of proxy records are sensitive to summer temperatures. The same suggestion is applied to moisture variations. Maybe a figure similar to the Figure 6 is helpful to guide the authors to organize the different archives based on the sub-regions in the

study area. I guess that the moisture variations might have differed more regionally than temperature.

There are very limited hydroclimatic data available from the Midwestern part of our study area, but we can differentiate the western versus eastern bog records, and discuss the western tree-ring and bog data together before speaking about the remaining data, which effectively apply only to the eastern portion of the domain. Figure 8, which shows dominant patterns of spatial variations in drought from 1700-2005, is intended to be analogous to Figure 6, which shows the spatial variations in temperature in the region. The bog data are now displayed differently (separating east and west sites) in Fig. 7.

11) Figure 7: What do they mean by the '+' symbol? Please clarify it in the Figure legend. How about the dating uncertainties for lake or bog sediment records? It is crucial for comparison with other high-resolution data. It is possible that the dating accuracy affects poor correspondence among the proxies. An additional table outlining all the details including dating material, sampling resolution, temporal resolution, dating methods and so on is useful. As a result, a separate discussion paragraph is needed. What is the full name for NY, RI, ME and others? All the testate amoeba data are from the same region, west or eastern region? From Figure 1, the related data distribute widely. Are they arranged regionally or not? Can they provide the simulation output results for moisture variations over the past 3000 years from GCM modeling? If so, it would be a very helpful addition.

The "+" symbol indicates time periods with high water table depths and thus signify drought events; we will add this to the figure caption. The dating uncertainties are always an important component of uncertainty in the sediment records, and they certainly have an impact on multi-proxy comparisons; we provide "Table 1" now containing details about the sediment records used in the analysis, with their resolution and related material. It is not practical or even possible, however, to obtain and re-assess all the dates in the original publications in this synthesis. We did add full names for the states, and also separate the testate amoeba records by region (Fig. 7). The moisture variations from the GCM modeling are also now included (Fig. 7). We greatly appreciate all of these helpful suggestions.

Climatic history of the northeastern United States during the past 3000 years

Jennifer R. Marlon¹, Neil Pederson², Connor Nolan³, Simon Goring⁴, Bryan Shuman⁵, Ann Robertson¹, Robert Booth⁶, Patrick J. Bartlein⁷, Melissa A. Berke⁸, Michael Clifford⁹, Edward Cook¹⁰, Ann Dieffenbacher-Krall¹¹, Michael C. Dietze¹², Amy Hessl¹³, J. Bradford Hubeny¹⁴, Stephen T. Jackson^{3,15}, Jeremiah Marsicek⁵, Jason McLachlan¹⁶, Cary J. Mock¹⁷, David J.P. Moore¹⁸, Jonathan Nichols¹⁹, Dorothy Peteet¹⁹, Kevin Schaefer²⁰, Valerie Trouet²¹, Charles Umbanhowar²², John W. Williams⁴, and Zicheng Yu⁶

¹Yale School of Forestry and Environmental Studies, CT 06511, USA

²Harvard Forest, Harvard University, MA 01366, USA

³Department of Geosciences, University of Arizona, AZ 85721, USA

⁴Department of Geography, Center for Climatic Research, University of Wisconsin-Madison, WI 53706, USA

⁵Department of Geology and Geophysics, University of Wyoming, WY 82071, USA

⁶Earth and Environmental Science Department, Lehigh University, PA 18015, USA

⁷Department of Geography, University of Oregon, OR 97108, USA

⁸Department of Civil and Environmental Engineering and Earth Sciences, University of Notre Dame, IN 46556, USA

⁹Division of Earth and Ecosystem Sciences, Desert Research Institute in Las Vegas, NV 89119, USA

¹⁰Tree-Ring Laboratory, Lamont-Doherty Earth Observatory, NY 10964, USA

¹¹School of Biology and Ecology, University of Maine, ME 04469 USA

¹²Department of Earth and Environment, Boston University, MA, 02215 USA

¹³Department of Geology and Geography, West Virginia University, WV 26501, USA

¹⁴Department of Geological Sciences, Salem State University, Salem, MA 01970, USA

¹⁵Southwest Climate Science Center, US Geological Survey, Tucson, AZ 85719, USA

¹⁶Department of Biological Sciences, University of Notre Dame, IN 46556, USA

¹⁷Department of Geography, University of South Carolina, SC 29208, USA

¹⁸Department of Geosciences and School of Natural Resources and Environment, University of Arizona, Tucson, AZ 85721, USA

¹⁹Biology and Paleo Environment, Lamont-Doherty Earth Observatory, NY 10964, USA

²⁰Snow and Ice Data Center, CIRES, University of Colorado, CO 80309, USA

²¹Laboratory of Tree-Ring Research, University of Arizona, AZ 85721, USA

²²Department of Biology, St. Olaf College, MN 55057, USA

Correspondence to: J.R. Marlon (jennifer.marlon@yale.edu)

Abstract. Many ecosystem processes that influence Earth system feedbacks – vegetation growth, water and nutrient cycling, disturbance regimes – are strongly influenced by multi-decadal to millennial-scale climate variations that cannot be directly observed. Paleoclimate records provide information about these variations, forming the basis of our understanding and modeling of them. Fossil pollen records are abundant in the NE US, but cannot simultaneously provide information about paleoclimate and past vegetation in a modeling context because this leads to circular logic. If pollen data are used to constrain past vegetation changes, then the remaining paleoclimate archives in the northeastern US (NE US) are quite limited. Nonetheless, a growing number of diverse reconstructions have been developed, but have not yet been examined together. Here we conduct

a systematic review, assessment, and comparison of paleotemperature and paleohydrological proxies from the NE US for the last 3000 years. Regional temperature reconstructions (primarily summer) show a long-term cooling trend (1000 BCE-1700 CE) consistent with hemispheric-scale reconstructions, while hydroclimate data show gradually wetter conditions through the present day. Multiple proxies suggest that a prolonged, widespread drought occurred between 550-750 CE. Dry conditions are also evident during the Medieval Climate Anomaly, which was warmer and drier than during the Little Ice Age, and drier than today. There is some evidence for an acceleration of the longer-term wetting trend in the NE US during the past century, and coupled with an abrupt shift from decreasing to increasing temperatures in the past century, these changes could have wide-ranging implications for species distributions, ecosystem dynamics, and extreme weather events. More work is needed to gather paleoclimate data in the NE US, to make inter-proxy comparisons, and to improve estimates of uncertainty in reconstructions.

10 1 Introduction

Many dimensions of climate – from gradual shifts in temperature and precipitation, to changing seasonal patterns, to extreme weather – influence species and ecosystem processes. An ecologically relevant understanding of regional climate variability thus requires diverse records that overlap in space and time. Such understanding would enable the investigation of long-term ecosystem processes such as succession, large-scale shifts in species composition, and periodic, infrequent disturbances like droughts and flooding, using models or empirical approaches.

In the Northeastern United States (NE US), from the Great Lakes to New England, there are few natural archives such as ice sheets, caves, or corals, that provide long regional climate records. The last deglaciation, however, left thousands of lakes and bogs filled with sediments that have recorded local environmental changes. As a result, NE US paleoclimate has primarily been inferred from local studies and vegetation studies, or from broad-scale syntheses that interpolate or downscale data to finer scales.

Temperature changes in the NE US during the late Holocene are generally inferred from global, Northern Hemisphere, and North American research that draw on marine archives (Marcott et al., 2013), tree rings in adjacent regions (Esper et al., 2002; Mann et al., 2009; Trouet et al., 2013), and continental-scale pollen-based climate reconstructions (Viau et al., 2012; Trouet et al., 2013). Such data show declining temperatures during the past 3000 years (during the “neoglacial”) until about 1700 CE (250 cal yr BP), when the current global warming trend began. Sea surface temperature (SST) reconstructions from marine sediment near Nova Scotia also indicate consistently cooler-than-present conditions during the past 1500 years (Keigwin et al., 2003).

The extent to which broad temperature trends reflect regional, terrestrial climate in the NE US is unclear. Results are contradictory regarding changes during the Medieval Climate Anomaly (MCA; ca. 950–1250 CE; 1000-700 cal y BP) and the Little Ice Age (LIA; ca. 1400–1700 CE; 550-250 cal y BP) (Mann et al., 2009). Warming during the MCA is not observed in SST reconstructions near Nova Scotia (Keigwin et al., 2003) and ecological studies have shown complex responses to climate changes during this interval (Fuller et al., 1998; Umbanhowar, 2004). Vegetation-based climate reconstructions suggest relatively high temperatures during the MCA in the deciduous and hardwood forests of eastern North America about 1300 years ago (Viau

et al., 2012), and about 1000 years ago (Trouet et al., 2013), respectively. LIA cooling registers strongly in vegetation and fire regimes in both the Midwest and NE (Umbanhowar, 2004; Clifford and Booth, 2013). Vegetation is controlled by many factors in addition to climate, however, and would ideally be reserved to evaluate the ecological responses to the climate history rather than used for both climate and ecological reconstruction, especially in a modeling context.

5 Data reflecting hydroclimatic variability are more abundant in the NE US, coming from tree-rings (e.g., Cook and Krusic, 2004, 2008; Pederson et al., 2014), lake levels (e.g., Shuman et al., 2002), variations in lake chemistry (e.g., Li et al., 2007), shifts in diatoms (Boefft et al., 2016), and changes in testate amoeba composition from bog sediments (e.g., Booth et al., 2012). Such data show relatively wet conditions in the late versus mid-Holocene (Digerfeldt et al., 1992; Almquist et al., 2001; Shuman et al., 2009) with increasing effective moisture towards present (Newby et al., 2014). Episodic drought and pluvial
10 events, documented by a variety of proxies, are superimposed on the gradual trend towards increasing moisture (Pederson et al., 2005). The synchronicity of such events is largely unexplored.

To provide a new perspective on regional, terrestrial climate changes in the NE US (Peterson et al., 2013), we examine local and regional paleoclimate data from the NE US, defined here as 100 to 60 east longitude, and 38 to 52 north latitude (Fig. 1). Our objectives are to 1) identify the data resources of the region to help prioritize and motivate new data collection; 2) improve
15 our understanding of regional climate evolution over centuries and millennia; and 3) enhance our ability to contextualize current and projected environmental changes. To these ends, we first review the strengths and limitations of different kinds of paleoclimatic proxies and archives. We then discuss uncertainties in paleoclimate reconstructions, an issue fundamental to the advance of climate and ecosystem modeling. Finally, we compare and contrast the diverse NE US data sets to assess past trends in temperature and moisture availability, and to identify shared features and inconsistencies in centennial-scale events.

20 **2 Review of Existing NE US Paleoclimate Records**

Here we describe the most common paleoclimatic data sources (proxies) and the natural archives containing them in the NE US. Natural archives result from complex flows of materials, energy and water through the landscape (Fig. 2). As a result, they incorporate many processes unrelated to climate. Removing non-climatic signals is thus a major challenge for studying paleoenvironmental change.

25 Identifying records from a variety of proxies is important because different sources often reflect unique aspects of climate change. Lake level records and diatom-based records of past salinity integrate the temperature (T), precipitation (P), and evapotranspiration (ET) variations sensed by bogs with groundwater inputs (Q), operating over timescales of decades to centuries. The sensitivity of lake hydrology to climate variability depends heavily on lake size, volume, shape, position in watershed, and degree of connectivity to subsurface water flows. Terrestrial ecological systems are governed by climatic variability and
30 ecological responses to this variability at timescales of years to centuries, and at levels of ecological organization ranging from individual organisms to communities and ecosystems. Proxies obtained from tree rings sense the growth responses of individual trees at timescales of seasons to decades, while the biomarker, isotopic, and pollen signals recorded in bog and lake archives are typically time-averaged by depositional processes, with the degree of time-averaging varying among archives. The proxies

found in marine archives are mostly produced by marine organisms (e.g. biomarkers) but some such as pollen are terrestrially sourced (Fig. 2).

Each natural archive is associated with a typical record length (Fig. 3), which in turn constrains the timescales of climate variability that can be reconstructed (e.g., hourly, seasonal, decadal, millennial). Longer records tend to have lower temporal resolution due to sampling constraints. The diversity of climatic and non-climatic signals that register in a proxy, along with the differences in record lengths and spatial coverage makes it difficult to compare records and presents a key challenge for building robust paleoclimate reconstructions. Few records can capture multi-decadal temperature or moisture variability with high temporal resolution. Tree-ring records, for example, are the only non-instrumental data source in the NE that can consistently capture seasonal or annual variations (Fig. 3). Nonetheless, an assessment of the existing data in the NE US highlights opportunities for bridging multiple scales of variability, such as paired records from nearby bogs and lakes, or composite records from regional tree-ring reconstructions.

2.1 Modern and Historical Climate Records

Observations and measurements of weather and climate during the modern (1950-present) and historical (1600–1950 CE) periods in the NE US provide accurate, comprehensive information about recent climate changes. Hourly temperature and precipitation measurements, relative humidity, wind speed and direction, and barometric pressure are measured at various elevations. Other variables such as soil moisture can be calculated. Hourly or daily data can be aggregated seasonally, annually, and decadal to examine short-term variability. In addition to documenting ongoing climate changes, such data support modeling future changes (Hayhoe et al., 2007) and the calibration of paleoclimate records.

The United States Historical Climatological Network (USHCN), which includes hundreds of US weather stations that are often still in operation today (<http://www.ncdc.noaa.gov/oa/climate/research/ushcn/>), provides continuous climate data spanning the past century or more through to present. Historical Fort Data from the National Archives and Records Administration (<http://mrcc.sws.uiuc.edu/FORTS/inventory1.jsp>) extends back to the 19th century in some cases. Some of these stations became part of the USHCN, thereby providing a continuous record of climate from the historical period through the present (Tipton et al., 2016). Hiatuses are common in the Fort data however, and measurements were not taken at the same time of day at different stations, so uncertainty is generally higher than in the USHCN data.

A variety of other historical climate records are used to reconstruct particular weather events, such as storms and hurricanes (Mock, 2012). Documentary archives generally span decades or a few hundred years, and come from early instrumental records, personal diaries, newspapers, and ship logs. Such records can be very accurately dated and detailed, but spatial coverage is limited and uncertainties tend to increase with record length. Other sources of historical data come from careful, systematic observations of environmental changes like ice-out dates (Hodgkins, 2013), changes in the timing of seasons or precipitation patterns, and changes in lake levels or phenology (e.g., arrival date of particular migrating bird species, or the blossom dates of certain plant species) (Primack et al., 2004).

Modern and historical data show annual temperatures in the NE US increasing by almost 1.1°C and precipitation increasing by about 12 cm (more than 10%) over the past century (Horton et al., 2014). Precipitation timing is also changing, with the

heaviest events from 1958-2012 increasing 37% in the Midwest, and 71% in the northeast (Karl, 2009). The frequency of daily summer precipitation (June, July, August) has significantly increased since the mid 1990s in the Ohio Valley of Ohio and Kentucky and in eastern New York State (Bishop and Pederson, 2015). Seasonal changes are also evident, with warming strongest in winter and precipitation increases most pronounced in the Fall (Kunkel et al., 2013). Loss of winter ice cover on Lake Superior has caused the summer surface water temperatures there to increase approximately 2.5°C between 1979–2006 (Austin and Colman, 2007). In Maine, ice-out dates (the dates when lake ice first breaks-up each spring), are getting earlier, reflecting warming over the past century (by 0.6 days/decade from 1884 through 2008) (Hodgkins, 2013). Sebago Lake in Maine has been failing to freeze completely at an increasing rate since 1937, and projections for continued warming signal significant ecological and economic impacts in the region through its effects on fisheries, transportation (e.g., snowmobile trails) recreation, and other resources. Warming thus appears to be more rapid in southern than northern New England thus far, but upwards trends in both temperatures and precipitation are expected to continue in coming decades (Anderson et al., 2010).

2.2 Tree-ring Records

Tree-ring records provide the most abundant data about seasonal to decadal drought and temperature variations beyond the historical record (Speer, 2010). Records from long-lived species like bristlecone pine (*Pinus longaeva*) or baldcypress (*Taxodium distichum*) are used to extend instrumental records of climate back 1000-3000+ years in some cases, but limited tree longevity and preservation of samples for cross-dating often limit longer-term analyses. Using ring widths, wood density, or stable isotopic content, dendroclimatic (tree-ring based paleoclimate) reconstructions of temperature and moisture availability can be created from a network of tree-ring records. In addition, growth suppression (Trouet et al., 2016) and tree-ring anatomical variability (Therrell and Bialecki, 2015) can be used to reconstruct extreme events, such as hurricanes and floods.

Specific extreme climatic events or decadal climate fluctuations can be identified using dendroclimatology, which relies on precise and accurate dating of each ring (Black et al., 2016) – a non-trivial exercise, particularly in closed canopy forests where many factors influence growth. Tree-ring reconstructions also employ direct calibration and verification of the climate-growth model from instrumental data. Rigorous statistical testing of these models builds confidence that reconstructions of historical climate represent an approximation of the range of past variation, or at least of variations in surviving trees. As with many paleoclimate proxies, reconstructions from tree rings are generally biased towards the growing season because dormant season (winter) changes have much less of an affect on radial growth. In addition, climate changes in spring versus fall, for example, may affect rings differently; fall climate primarily affects growth in the following year. Dendroclimatology methods are reviewed in detail in Cook and Kairiukstis 1990. Key limitations of tree-ring records of past climate are predicated on tree longevity, the ability to retain low-frequency trends, and the geometric and ecological factors influencing stem growth (Fritts, 1976; Cook and Peters, 1997).

In the NE US, tree-ring records are limited in length, rarely extending beyond the past 500 years. Growth is influenced by non-climatic and climatic factors (Cook and Pederson, 2011), and most NE US trees are moisture- rather than temperature-sensitive (Stahle and Hehr, 1984; Cook, 1991; Meko et al., 1993). Conifers at high elevations or northern range margins have the strongest significant and positive relationships to temperature (Conkey, 1982; Pederson et al., 2004; Bhuta et al., 2009),

and the temperature sensitivity of red spruce wood density (Conkey, 1986) and Atlantic white-cedar ring widths (Hopton and Pederson, 2005) in particular have produced reliable reconstructions. Red spruce sensitivity to acid rain, however, may complicate the most recent temperature reconstructions (Webster et al., 2004).

In the NE US, only a few tree species in a specific portion of their range are sensitive enough for temperature reconstructions (Conkey, 1986; Pederson et al., 2004; Hopton and Pederson, 2005). Several records 1000 years or longer are solely from cliff-dwelling northern white cedar or eastern red cedar, and account for a lower proportion of annual variance in the instrumental record versus most other reconstructions. Such limitations can be overcome by combining multiple species (Cook and Pederson, 2011; Maxwell et al., 2011; Pederson et al., 2013), but this limits the robustness of longer reconstructions.

The most common paleoclimatic reconstruction target from tree rings is the Palmer Drought Severity Index (PDSI), especially in the NE US due to the limited temperature sensitivity of most species. The North American Drought Atlas (NADA) (Cook and Krusic, 2004; Cook et al., 2004) provided new insights into broad-scale hydroclimate variations. Most early NADA research focused on the great droughts of the western US and Great Plains (e.g. (Fye et al., 2003; Cook et al., 2004; Stahle et al., 2007), but within the last decade, a focus on NE US hydroclimate has emerged. In the central Mississippi River Valley, a summer PDSI reconstruction shows a sustained wetting trend from the 1100-1247 CE dry epoch through present day (Cook et al., 2010). Analysis of tree rings from the Red River indicate an extended dry period from 1675 to 1770 CE (George and Nielsen, 2002). Summer moisture across the central portion of the eastern US has been increasing since at least the early 1800s (McEwan et al., 2011). Similar trends are evident from PDSI reconstructions in eastern N.Y. state and western New England, with a general reduction in the severity and duration of drought in the 20th century versus the prior 350 years (Pederson et al., 2013). At the northern end of the Mississippi River in Minnesota, Iowa, and Wisconsin, summer PDSI over the last 500 years also indicates a general wetting trend (Pederson et al., 2015).

At annual to decadal time scales, properly dated tree-ring records of past climate demonstrate how climate affects ecological and societal dynamics (Stahle et al., 1998; Cook et al., 2010). Both qualitative and quantitative tree-ring data have been used to understand how intensive drought contributed to the severe mortality rates among the first European settlers in Jamestown, for example (Stahle et al., 1998), and how paleoclimate variations can affect ecosystem services today (Pederson et al., 2015).

2.3 Bog Records

Analyses of peatland sediment from bogs have been widely used in North America and Europe to provide information about changes in vegetation communities and fire regimes from fossil pollen, macrofossils, and charcoal. Bog sediments from ombrotrophic, or raised bogs, are also a unique source of hydroclimate data because precipitation is their sole moisture input, which affects water table depth (WTD). WTD changes, in turn, affect the composition of testate amoebae communities – a group of protists that produce decay-resistant shells – in the bog. Different species of testate amoebae have different sensitivities to moisture, so measuring changes in their relative taxa abundances, or community assemblages over time, enables the reconstruction of past changes in WTD and thus hydroclimate near the bog (Booth et al., 2002; Booth, 2008; Mitchell et al., 2008).

Bog surface-moisture responds predominantly to growing season precipitation (Booth et al., 2010; Charman et al., 2004; Charman and Blundell, 2007; Charman et al., 2009). In the NE US, bog data most closely reflect the length and severity of the summer moisture deficit, which is usually related to summer precipitation (Charman and Blundell, 2007; Booth, 2010). There can be important differences in seasonal sensitivities however across both space and time, and the relative importance of precipitation versus temperature can also vary among sites (Booth, 2010). Thus in some cases, changes in WTD may be more closely correlated with summer PDSI, while elsewhere it may better reflect annual PDSI. Still other bogs may respond to temperature more than precipitation variations, which may be correlated with each other, and thus produce effects that are very difficult to disentangle.

For WTD reconstructions, a weighted-average model is developed from a modern calibration dataset and is used to infer temporal changes in WTD from downcore compositional changes (Booth, 2008). Calibration datasets for modern testate amoeba are based on samples collected along moisture gradients in the bog, however, which means that reconstructions of absolute precipitation values is not possible. As a result, inferred WTD changes at a coring location reflect relative rather than absolute changes in surface moisture through time. Additional analyses are typically used to evaluate the robustness of the paleohydrological reconstruction. It is common to compare the WTD reconstructions to peat humification data from the same core for example, and to compare records among bogs from the same region. Such comparisons provide an assessment of both the robustness of the paleohydrological reconstruction as well as its climatic sensitivity. Booth (2010) showed that WTD reconstructions were strongly correlated with PDSI, as were downcore comparisons with hydrologic and climatic data (Booth et al., 2010).

Modelling studies suggest that extreme events register strongly in bog records (Morris et al., 2015; Clifford and Booth, 2015), whereas lower magnitude and lower frequency changes in WTD may be more strongly influenced by autogenic processes such as lateral peat-bog expansion, vertical peat growth, decomposition-induced changes in hydraulic conductivity, and other ecological dynamics (Charman et al., 2006; Swindles et al., 2012; Morris et al., 2015). As in dendroclimatic reconstructions, detrending WTD data removes potential non-climatic signals, but concurrently limits paleoclimate inferences to extreme centennial-to-multidecadal events (Charman et al., 2006; Booth et al., 2012).

In eastern North America, the best-dated sites are from Michigan and Maine (Booth et al., 2012; Clifford and Booth, 2013). Drought, vegetation, and fire reconstructions from several New England records reveal an abrupt decline of eastern hemlock (*Tsuga canadensis*) and American beech (*Fagus grandifolia*), concomitant with an increase in pine (*Pinus* spp.) and oak (*Quercus* spp.) between 1350-1450 CE (500 and 600 yr BP) from increased drought and fire (Clifford and Booth, 2013).

2.4 Lake and Marine Records

Lake and marine sediments can capture long (multi-decadal to millennial-scale) variations in climate, and several methods used to study paleoclimate in sediments can be applied to both lake and marine sediments, including fossil pollen and macrofossils, and approaches based on organic geochemistry. Lake and marine sediments are commonly analyzed for a broad range of environmental data, some of which have paleoclimate information. Many of these data sources, however, are too complex to provide consistent, reliable data from a variety of sites. Grain size analyses, magnetic susceptibility, and loss-on-ignition,

for example, are commonly quantified in sediments but often provide information that is ambiguous in terms of its climate signal, and must be paired with other information. Site selection for lakes is critically important in providing conditions that are suitable for paleoclimatic reconstruction.

Important differences exist in reconstructions from marine versus lacustrine sediments. Different organisms and depositional contexts affect the kinds of variables that can be reconstructed, as well as the typical record lengths (marine records are longer), the typical temporal and spatial resolution (more coarse for marine sediments), and the amount of uncertainty in the dating. The number and nature of adjustments in radiocarbon dating of sediments also varies in lake versus marine sediments. In addition, influences from non-climatic factors differ between lake and marine records. Sediment deposition is affected by oceanic currents in marine contexts, and from inflowing and outflowing streams or from ground water flow in a lake basin.

2.4.1 Annually Laminated Sediments (Varves)

In some lakes, annual sediment accumulations form distinct annual layers, called varves, that are often visible as thin, differently-colored bands. This typically occurs in small lake basins with steep slopes and limited wind-driven currents that prevent seasonal mixing of surface and bottom waters. In this case, the deep benthos is unventilated and hence permanently anoxic, preventing organisms that normally exist in the sediment from disturbing the layering. Varved lakes are rare, but can yield unusually detailed information about annual and sometimes seasonal variations in environmental conditions over millennia.

Paleoclimate information from varved lakes has generally come from the interpretation of changes in vegetation composition from fossil pollen (described below) (Gajewski, 1987). A varved sediment record from Elk Lake, Minnesota shows that white pine (*Pinus strobus*) largely replaced oak savanna about 750 BCE (2700 cal yr BP) (Bradbury, 1996), for example. Variations in the thickness of varves themselves can also provide climate information. Varve thicknesses from Elk Lake, Minnesota, were linked to solar activity and wind intensity during the early and mid-Holocene, but late-Holocene varve thicknesses were not easily explained (Bradbury, 1996). Pollen and charcoal data from Hell's Kitchen Lake in north-central Wisconsin indicated alternating moist and dry intervals over the past 2000 years, but yielded no long-term trends in temperature or moisture (Swain, 1978). Data from Hubeny et al. (2011) show variations in varve thickness from two sites in New York and Rhode Island (Fig. 1A). Varve thickness variations in both records are positively correlated with hydroclimate indices that suggest broad-scale forcings of decadal-to-centennial-scale drought events.

2.4.2 Lake Level Reconstructions

Changing lake levels provide a clear and visual indication of changing climate conditions – specifically of variations in moisture balance integrated over decades or longer. In the western US, for example, former strand lines of pluvial lakes Bonneville and Lahontan testify to wetter conditions in the distant past that are difficult to even imagine based on the modern climate (Fritz, 1996). In humid regions such as the NE US, such evidence may not be as visually obvious because high water now submerges ancient shorelines from past dry periods (Freeman-Lynde et al., 1980; Hutchinson et al., 1981; Mullins and Halfman, 2001). Shoreline features have long been used to reconstruct lake-levels, but such information does not provide a continuous record of change.

More recently, lithologic and magnetic measurements made from sediments have been used to develop continuous reconstructions of past drought and periods of sustained aridity. Measurements of Isothermal Remanent Magnetization (IRM) was used to produce a record of Holocene drought events (Li et al., 2007) from White Lake, New Jersey, that are strongly correlated with cold events in the North Atlantic (Bond et al., 2001). The IRM records show large shifts in lake levels that represent discrete drought events, but gradual trends are not evident in the data, but see Geiss et al. (2003). Strong magnetism in the sediments occurs when the sediment is comprised of marls (lime-rich sediment) rather than gyttja (organic-rich sediment). When the lake levels are reduced, the marls are exposed, oxidized, eroded, and transported to the deeper sediments of the lake, causing both a color change from brown to light yellow and a corresponding increase in magnetism (Li et al., 2007).

Sediment analyses that produce paleoclimatic records can often come from sites with unique hydrological or bathymetric characteristics that make them sensitive recorders of climate change, but are not reproducible at other sites. The ridge top location, underlying quartz conglomerate, and thin soils of Mohonk and Minnewaska Lakes, New York (Menking et al., 2012), for example, make these sites especially vulnerable to drought, and thus sensitive recorders of hydroclimatic changes. Both lakes show dramatic shifts in lake level during the late Holocene through increased erosion into the basin during droughts, increased pollen and macrofossils of pitch pine, and shallow water aquatic macrofossils. Such records can clearly reflect local hydrological variations but calibration data and other nearby proxies are lacking, making it difficult to quantify the climatic signals, understand spatial patterns, and evaluate uncertainty.

Several lake level reconstructions in the NE US are based on ground penetrating radar (GPR) and transects of multiple sediment cores from a lake margin (Newby et al., 2014; Pribyl and Shuman, 2014). This approach enables continuous reconstructions of shoreline advances and retreats through time that at least partly reflect changing hydroclimate (Digerfeldt, 1986). Factors such as isostasy and tectonics can influence large lakes (Balco et al., 1997, 1998), but operate on scales greater than the small ponds that have been used to reconstruct regional hydrologic changes (Newby et al., 2014). Groundwater flow directly controls the water levels in many small ponds and lakes (Almendinger, 1993; Winter, 1999), but annual changes in precipitation and evaporation have strong regional impacts (Weider and Boutt, 2010). Suitable lakes for lake-level reconstructions are usually formed within surficially-closed basins and are controlled by climatically-sensitive, near-surface groundwater fluctuations within well-defined watersheds. In the NE US, such lakes are ubiquitous, and comparisons of multiple lakes can limit confounding variables (Newby et al., 2014). Moreover, because lake-level reconstructions are based on the changes in physical properties of the sediments themselves (i.e., direct measurements of past shoreline locations), biological and geochemical processes do not complicate interpretations. Care must be taken to consider hydrologic complexities (Donovan et al., 2002; Smith et al., 2002; Steinman and Abbott, 2013), but multi-site validation using lakes located high in their local watersheds and in different hydrologic settings can improve climatic interpretations (Newby et al., 2014).

Radiocarbon dating is the primary constraint on the temporal resolution of lake level reconstructions because multiple cores are needed from each lake, introducing additional uncertainties from sampling, dating, and calibration (Newby et al., 2014). As a result, lake level reconstructions typically identify centennial to millennial-scale climatic variability, although sediment signals of decadal droughts, such as the 1960s drought in New England have been detected and dated (Newby et al., 2009). In

addition, because lake-levels vary in response to continuous changes in precipitation and evaporation usually integrated over 1-5 years (Mason et al., 1994), sub-annual hydroclimatic variations cannot be directly inferred (Shuman and Donnelly, 2006).

Transects of sediment cores are used to identify shifts in sand-mud boundary locations at the margin of each lake's littoral zone (Digerfeldt et al., 1992). GPR or other geophysical datasets can confirm the geometry of such changes (Newby et al., 2009; Shuman et al., 2009). A transect of two or more sediment cores across the lake are taken based on the GPR results. The results are then used to identify boundary shifts from changes in sediment characteristics, which enable the reconstruction of lake level variations over time.

Each centimeter (or finer) of sediment in the lake cores is classified as organic-rich profundal or as sand-rich littoral based on loss-on-ignition, bulk density, or x-ray fluorescence (XRF); this information is then used iteratively in an algorithm that creates a continuous estimate of lake level through time (Pribyl and Shuman, 2014). Reconstructed lake level variations can be coupled with watershed size and related information to reconstruct estimates of effective moisture (Shuman et al., 2009; Newby et al., 2014), or the ratio of actual evapotranspiration to potential evapotranspiration. In central New England, records are now being constructed for the creation of time-series of effective moisture at centennial time scales throughout the Holocene (Marsicek et al., 2013; Pribyl and Shuman, 2014).


Because lake level variations represent century-scale or longer-term fluctuations, these records are difficult to calibrate against modern observations. Modern calibration work has therefore tended to focus on understanding water depth-sediment relationships rather than on the calibration of the reconstructed and observed precipitation minus evaporation (P-E). Efforts to validate the reconstructions include comparisons between lake-level changes and pollen inferred moisture changes (Marsicek et al., 2013) as well as comparisons of the reconstructions from multiple nearby lakes (Newby et al., 2014). Plank and Shuman (2009) also digitized hundreds of aerial photos of lakes from the 1930s to examine how their levels changed relative to PDSI observations. Newby and colleagues (2009) identified a thin sand layer in the upper portion of a core from New Long Pond, in Plymouth, Massachusetts that dated to the 1960s drought, which depressed the local water table by >3 m. The sand layer shared the characteristics of many large sand layers used to infer prehistoric changes in water level. It may be possible to quantify the magnitude of the drought from the sediment data and compare it with the water-table observations in future research. Recent work in New England suggests that sustained drought may have occurred in the past despite limited changes in moisture availability in the more recent past (Newby et al., 2014).

2.4.3 Organic Geochemistry

The geochemical composition of bulk organic matter in sediments has long been used for environmental reconstruction. A wide array of geochemical data can be gathered from this organic matter, including abundance information, elemental distributions, and stable isotope ratios. With an understanding of thermodynamics, fractionation of stable isotopes, and advances in instrumentation applications, uses of stable isotopes have continued to grow. In marine sediment archives, stable oxygen ($\delta^{18}\text{O}$) and carbon ($\delta^{13}\text{C}$) isotope compositions of carbonate fossilized foraminiferal tests are used to reconstruct SST and global ice volume (Ravelo and Hillaire-Marcel, 2007). Likewise, the $\delta^{18}\text{O}$ and $\delta^{13}\text{C}$ values of lacustrine material has been examined as a source of paleoclimate information (Leng and Marshall, 2004; Meyers, 2003). These geochemical analyses are routine in

settings with excellent preservation, but archives that are degraded or represent mixed terrestrial and aquatic inputs (Castañeda et al., 2011) can have complicated signatures.

Organic molecules, compounds or groups of compounds that can be linked to specific source organisms or groups of organisms are called biomarkers. These are often recovered in locations where other bulk proxies are not available (Castañeda et al., 2011). Because they are insoluble in water, often chemically inert with low volatility, and resistant to biodegradation, they are long-lived in the environment and well suited for studies of the past (Eglinton and Hamilton, 1967; Eglinton and Eglinton, 2008).

Two key biomarker proxies from aquatic settings are U^{K}_{37} , based on differing number of double bonds of alkenones from haptophyte algae (Brassell et al., 1986; Herbert, 2001; Prahl and Wakeham, 1987), and TEX_{86} , based on the membrane lipid ring structures of Thaumarchaeota (Powers et al., 2004; Schouten et al., 2002). These biomarkers have been recently used for temperature reconstructions from lakes and oceans. Modern calibration studies and comparisons between these proxies, along with foraminiferal reconstructions, have revealed important differences in the seasonality (Pitcher et al., 2011) and depth of production of the organisms these proxies are based on (Karner et al., 2001), with significant implications for SST reconstruction. 

Terrestrial plant leaf wax biomarkers have been used to produce a range of paleohydrological reconstructions using compound specific hydrogen isotope values (δ^2H) (Sachse et al., 2012). Derived from the surface coating on leaves, leaf wax compound-specific δ^2H demonstrate strong relationships with mean annual precipitation (Sachse et al., 2004), though new research suggests they reflect a more limited interval of time surrounding leaf development (Tipple et al., 2013). In the NE US, Nichols and Huang (2012) used the ratio of the C_{23} n-alkane (representing bog-dwelling Sphagnum) to the C_{29} n-alkane (representing 5 dry-tolerant vascular plants) as an indicator of relatively wet versus dry conditions over the Holocene at a coastal bog in Maine. Hou et al. (2006; 2007) developed paleoclimate reconstructions from δ^2H values of the aquatic lipid behenic acid (C_{22} n-alkanoic acid) from a sediment core in Blood Pond, Massachusetts, and showed that variations in local climate paralleled those observed in the $\delta^{18}O$ variations from the Greenland Ice Sheet Project 2 (GISP2). Though the resolution is low for the last 3000 years, δ^2H of long chain terrestrial leaf wax compounds from Crooked and Berry Ponds, Massachusetts, suggest a wetting trend between 3-2 cal ka before becoming more dry and stable after 2 cal ka (Shuman and Donnelly, 2006). Several other Holocene climate reconstructions from the NE US have been developed from compound-specific δ^2H in lake sediments (Hou et al., 2006; Huang et al., 2002), but these have primarily been used as corroborating evidence for large, abrupt climate changes during deglaciation, such as the 8.2 ka event (Hou et al., 2007). As with other proxies, there are uncertainties, including the precise factors that influence lipid δ^2H values (Sachse et al., 2012) as well as which specific organisms are responsible for generating the lipids used in TEX_{86} (Schouten et al., 2013). In general though, these approaches offer novel and promising ways to reconstruct both past hydrologic and temperature variability, respectively.

2.4.4 Fossil Pollen

The most abundant paleo data in the NE US are pollen records developed from lakes, bogs, and other sediments that have been used primarily to understand changes in forest composition (Williams et al., 2004; Blois et al., 2011; Oswald and Foster,

2012; Marsicek et al., 2013). Through the use of transfer functions, pollen data have also been used to reconstruct paleoclimate (Webb et al., 1987, 1993; Viau et al., 2006; Bartlein et al., 2011; Viau et al., 2012).

Climate can be reconstructed from fossil pollen in sediment records because a) the geographic distribution and abundance of plant species is strongly influenced by climatic factors such as temperature minima, temperature maxima, and water availability (Woodward, 1987) and b) pollen abundances and distributions are a reliable, albeit biased, indicator of plant abundances and distributions (Webb, 1974; Solomon and T. Webb, 1985). Although pollen grains are typically identified only to the genus or family level rather than species level, higher taxa distributions are also determined by climate, and relationships can therefore be constructed between taxa assemblages and their locations in climate space (Bartlein et al., 2011). In the NE US, many species identifications have been made from pollen data, which can refine the environmental interpretation (Lindbladh et al., 2003).

Spatially-extensive surface (modern) pollen sample data sets are used to determine the contemporary relationships between climate and plant assemblages (Williams et al., 2006; Bartlein et al., 2011). Such training data are then used to establish empirical relationships between taxon abundance and selected climate variables. The unique relationships between specific taxa and climate, as determined by the analysis of the modern spatial datasets, are then applied to make paleoclimatic inferences from temporal variations in fossil samples. As with bogs, this space-for-time approach uses a variety of algorithms for transferring spatial climate-pollen relationships to temporal pollen trends, such as modern analogue, constrained analogue, response surfaces, and transfer functions (Telford and Birks, 2009). Modern species distributions or process-based (inverse) modelling can also be used to predict vegetation composition, particularly in terms of plant functional types (Wu et al., 2007; Garreta et al., 2010). In the latter case, both species distributions and surface samples can be reserved for validation testing (Bartlein et al., 2011).

The use of fossil pollen records to reconstruct climate has a long history in eastern North America (Bartlein and Webb, 1985; Gajewski, 1988; Prentice et al., 1991; Webb et al., 1993, 1998; Jackson et al., 2000; Williams et al., 2000; Bartlein et al., 2011; Viau et al., 2012; Wahl et al., 2012). Pollen data have been used to reconstruct climate variables such as mean temperature of the coldest month, mean temperature of the warmest month, mean annual temperature, and mean annual precipitation and bioclimatic variables. Such reconstructions quantify the climate changes that have often been observed indirectly through the pollen-based vegetation reconstructions. Records from the prairie-forest ecotone in Minnesota, Iowa, Wisconsin, and farther west, for example, show rapid prairie expansion in the early Holocene and slower subsequent afforestation in response to wetter conditions (Williams et al., 2009). Widespread expansions of taxa adapted to cool, moist climates, like spruce and fir, are documented by pollen data from the late Holocene (Gajewski, 1987). Oak, which is drought-tolerant and adapted to periodic disturbance, was reduced, and moisture-dependent chestnut (*Castanea dentata*) increased after ca. 1000 BCE (2950 cal yr BP) in New England (Davis, 1980; Shuman et al., 2004).

Short-term variations in plant assemblages associated with disturbance and succession are sometimes resolved in high-resolution pollen records (Pederson et al., 2005), but more often centennial to millennial variations generally track climate changes with little lag time (i.e., less than 100 years) (Williams et al., 2002). An important constraint in using pollen data to

reconstruct temperature variations exists when vegetation distributions may have been highly disturbed by human activity (e.g., for agriculture).

In addition to pollen, plant macrofossils (Birks and Birks, 2000) can provide a unique advantage in paleoclimate reconstruction because they add greater taxonomic and spatial precision than fossil pollen, and can be utilized for precise AMS C-14 dating. Their usage pre-dates pollen (Reid, 1899), and most add a species-specific component that is thus more precise than pollen (pollen is primarily identified to genus or family) for indications of temperature and precipitation. Conifer needles have been utilized to identify late-Holocene timing of specific treeline migration into both alpine (Jackson, 1989) and subarctic (Peteet, 1986) environments with paleoclimatic inferences. Additionally, aquatic macrofossils are often key indicators of lake level, and can help to define both hydroclimate as well as nutrient status and pH (Birks, 2002). Equally important for hydroclimate are bryophytes, which can often indicate both moisture and pH, and are more sensitive to moisture than higher plants (Gignac, 2001).

An important caveat holds for the use of pollen and macrofossil data in climate reconstructions that are supporting modeling efforts. If these data are used to reconstruct vegetation changes in ecosystem models, then the same data cannot also be used to reconstruct the climate changes. Using the same data to drive both vegetation and climate change could result in circular reasoning, because climate changes are expected to drive the vegetation changes in the first place.

2.5 Diatoms

Sediment diatoms provide hydroclimate information because different species have different salt tolerances, so community composition changes with shifts in lake salinity, or temperature and/or stratification (Fritz et al., 2000; Rühland et al., 2015; Saros et al., 2012). As with most paleoclimate data sources, diatom community composition also responds to non-climate factors such as lake location and morphometry, which affect lake circulation, for example (Boeff et al., 2016; Wigdahl-Perry et al., 2016). Many of the space-for-time transfer functions used in pollen-based paleoclimatology have also been applied to diatoms (Juggins and Birks, 2012). Although diatoms have not been analyzed as often as pollen in the NE US, they offer a unique opportunity to disentangle environmental changes due to human activities from those of climate change (Battarbee et al., 2012). More comprehensive discussion of diatom responses to climate may be found in Saros et al. (2012; 2015) and Rühland et al. (2015).

3 Uncertainty in Paleoclimate Reconstructions

There are multiple sources of uncertainty in paleoclimate reconstructions stemming both from natural spatial and temporal variability as well as from our ability to understand, measure, and model environmental processes (Evans et al., 2013). Identifying, quantifying, and assessing the importance of different sources of uncertainty is a growing challenge in paleoclimate science as new proxies and models proliferate and new techniques for data-model assimilation place increasing importance on accurately quantifying uncertainty (Crucifix, 2012). The examination of uncertainty can occur through comparisons among different collections of observational evidence, as well as between models and data. Providing quantitative estimates of uncer-

tainty requires some kind of calibration, or a comparison between the paleo reconstruction and independent data source with known accuracy.

Uncertainty stems from two key sources of variability: 1) natural variability, which occurs through space and time in ecological and climatic processes that may be stochastic or systematic, but are ultimately controlled by external factors; and 2) our knowledge of such changes, which can result from limitations or errors in observation, sampling, measurement, dating, analysis, and other sources (Goring et al., 2012; Tingley et al., 2012). Uncertainty can be examined qualitatively or quantitatively, and both approaches are common in paleo research.

In the ideal case, paleoclimate reconstructions are quantitatively calibrated using modern climate data. Comparisons of tree-ring reconstructions of PDSI against modern PDSI measurements, for example, show a moderately strong correlation ($R^2 = 0.55$) in New York over the period in which they overlap, 1895-2000 CE (Fig. 4A). Such analyses allow the calculation of error estimates for drought reconstructions for the preceding centuries (Pederson et al., 2013).

For paleoclimate reconstructions based on changes in biological community compositions like fossil pollen, diatoms, and testate amoeba, space-for-time calibration is needed before a paleoclimate reconstruction can be attempted. Annual precipitation reconstructed from modern pollen in lake sediments from eastern North America for example, reconstructed using modern datasets and space-for-time calibration, compares well with observed annual precipitation ($R^2 = 0.70$; Fig. 4B) (Marsicek et al., 2013). For testate amoeba, Booth (2008) developed and tested a variety of transfer functions between community composition and water table depths. The spatial patterns in taxon distributions from eastern North America and the Rocky Mountains were compared against modern observations of water table depth at each site ($R^2 = 0.84$; Fig. 4C). The resulting transfer functions were then applied to temporal variations in testate communities downcore. The accuracy of alternative transfer functions can be evaluated using cross validation, spatial leave-one-out approaches, and similar statistical methods. In a similar example from Booth (2010), water-table depth (WTD) was reconstructed for Hole Bog (Booth, 2008), and the measurements were used to infer variations in past drought events. The correlation between WTD estimates and (averaged) instrumental PDSI values for 1895-2003 CE from the broader climate division ($R^2 = 0.39$) helps assess but not partition the uncertainty (Fig. 4D). Bayesian approaches to calibration can help improve prediction skill (Tingley and Huybers, 2009), and may be applicable to other proxies, like pollen, that require transfer functions.

Many other types of sediment data contain paleoclimate information that cannot be directly calibrated, either because modern data for the variable measured do not exist or do not align closely enough with the temporal and/or spatial scale of climate variability that is being reconstructed. In lake level reconstructions for example, modern and historical precipitation records generally do not extend back far enough in time to allow validation of the centennial and millennial-scale variations in the paleodata. In this case, inter-site and inter-proxy comparisons can still be used to increase confidence in the data. Lake-level data, for example, along with information about watershed hydrology can be used to model variations in P-E at a site, and these data can then be compared with a pollen-based precipitation reconstruction from the same site (Fig. 4E); at Deep Pond, Massachusetts, such a comparison yields an R^2 of 0.427.

Alternatively, comparisons can be made between the same types of reconstructions from nearby sites. Two lake-level reconstructions from Massachusetts (Fig. 4F) show a positive correlation of 0.654 (R^2), providing convergent evidence that a

given signal does indeed reflect climate changes and not other local processes. Such analyses can reduce uncertainty by allowing assessments of relative changes over time; they can also serve as qualitative benchmarks for models. However, reducing uncertainty, whether through cross-site or cross-proxy comparisons, through careful site selection, radiocarbon dating and other methods, is insufficient to provide the quantitative estimates of uncertainty required for rigorously assimilating data into models.

To understand clearly whether differences in observed versus predicted data result from natural spatial or temporal variability in climate, or from some aspect of the measurement process (e.g., differences in the locations of the proxies, or in sampling error), process models can be developed. Process models are used to quantitatively identify, isolate, and measure the different sources of error in a reconstruction. Modeling the way in which a proxy registers climate information formally (Evans et al., 2013) opens new opportunities for integration with other proxies, hypothesis testing, and for assimilation into more complex ecosystem models. Tipton et al. 2016, for example, developed a Bayesian hierarchical statistical model of tree-ring growth to jointly reconstruct temperature and precipitation at a site in the Hudson Valley, NY. Their multi-scale model allows tree growth to vary by species and to respond to both temperature and precipitation variations in climate through time at different temporal scales. Quantification of uncertainty at this level of rigor is only possible when calibration data are available for the appropriate spatial and temporal domain of a reconstruction. Even here, however, decisions still remain as to how to assess the accuracy of the reconstructions.

4 Coherence of NE US Climate Change Records

4.1 Methods

To assess the coherence of climate changes among the diverse paleoclimate records in the NE US (Fig. 1), we smoothed high-resolution records, and composited and smoothed hundreds of tree-ring from the North American Drought Atlas (NADA) (Cook et al., 2010) and pollen records in the NE US (Williams et al., 2011) from the Neotoma Paleoecology Database (<http://neotomadb.org>). We identified drought events in the testate amoeba records and calculated sums of drought events from these events to make this proxy comparable to gradual changes in lake levels and other hydroclimatic data.

High-resolution records, including the tree-ring based temperature reconstruction from Esper et al. (2002), the composite varve thickness record from Hubeny et al. (2011), and the pollen-based temperature and precipitation records, were smoothed using the same approach. The data were first binned into 5-yr time steps for all but the pollen data, which were binned into 10-yr intervals due to their lower average temporal resolution. The binned data were then smoothed with a 50-year half-window width using locally-weighted regression, robust to outliers (Loader, 2007), except for the pollen data, which were smoothed with a 100-yr half-window width. The window widths were chosen to optimize the identification of both trends and shared major features in the records on centennial to millennial time scales. Bootstrap confidence intervals were created by sampling the sites in the full group with replacement for 1000 iterations.

For the pollen data (Fig. 1B), the modern analogue technique was used to reconstruct climate variables (Williams et al., 2011). In this analysis, the climate variables were converted to anomalies so that shared patterns could be observed regardless

of differences in the absolute values across the NE broadly. Pollen records were compiled from sites between 40° and 50° latitude and -70° and -100° longitude (Fig. 1B). The pollen data were not adjusted for human impact, so both the Williams et al. 2011 and Viau et al. 2006 records were clipped at 1850 CE.

Seven testate amoeba records (Booth et al., 2012; Clifford and Booth, 2013) were decomposed into low and high frequency components so that reconstructed drought events could be separated from trends in water table depth that may not be related to climate changes. The bog records were detrended again using locally weighted regression (Loader, 2007) with a 500-yr half window. Droughts were identified in the detrended series as peaks above the 90th percentile. Identified drought events were then summed across all series to construct a regional summary index.

The tree ring data (Fig. 1B) from NADA (Cook et al., 2010) were used to calculate the Drought Area Index (DAI) for the north/central and eastern portions of the NE. Grid cells included in the north/central region are from -100° to -90° longitude and 37.5° to 52.5° latitude, and from 37.5° to 47.5° latitude and -80° to -65° longitude for the eastern region. Data in each sub-region (Midwestern and North Atlantic Coast) were smoothed using methods from Cook et al. (2004).

To characterize the broad-scale spatial and temporal trends in temperature from the last century across the NE US, we analyze data from the Global Historical Climatological Network (GHCN) using empirical orthogonal functions (EOF). We also use EOF analysis to identify the spatial structure in the NADA from 1700-2005.

Two reconstructions of New England storms, including tropical cyclones and hurricanes, were created from the regional to synoptic scale historical data. For tropical cyclone candidates, characteristics were analyzed to ensure that a storm was indeed tropical (Mock, 2008). Records clearly exhibiting cold frontal passages, lack of an inner warm-core system, and falling V-shaped bar graphs were classified as extratropical, but all pre-1871 records were noted if they had winds gusting to gale or hurricane force during hurricane season. Data for each storm were also examined through descriptions of storm surge and damage to assess storm intensity consistent with the Saffir-Simpson scale.

4.2 Reconstructed Temperature Variations in the NE US for the Last 3,000 Years

Both broad, northern hemisphere and highly localized variability in NE US paleoclimate has been examined in detail in previous publications. Here, we instead try to characterize the late Holocene climate in the NE US as a whole, and focus on the similarities and differences that appear across multiple paleo temperature records from 3000 years ago to present (Fig. 5).

In the context of the full Holocene, NE US climate changes over the past three millennia are comparatively subtle (Shuman and Marsicek, 2016). A long-term cooling trend is evident, however, in most of the data, including the SST (Keigwin et al., 2003; Sachs, 2007) and pollen-based (Viau et al., 2006; Williams et al., 2011) temperature reconstructions (Fig. 5A, 5B, 5F, FH). Although these data may be biased towards growing season climate, mean annual temperature reconstructions from the pollen data also show a slight cooling trend (Fig. 5F). Based on the average mean temperature of the warmest month (MTWA), peak summer warming occurs between 2500 and 3000 years ago, with generally declining temperatures thereafter until the most recent two centuries. Mean annual temperature anomalies 2006 are also generally high prior to 2500 cal yr BP, and then show a subtle long-term decline (Fig. 5F). The pollen-based temperature reconstruction from Trouet et al. (2013) show cooling during most of the past millennium (Fig. 5G). Transient climate simulations from (Liu et al., 2009) span the full late Holocene

and show a slight decline in summer temperatures over the past 3000 years (Fig. 5J), but not simulated fall temperatures (not shown) show a much stronger long-term cooling, especially in September. Although they only span a bit more than the past millennium, the broad-scale tree-ring and multi-proxy reconstructions (Esper et al., 2012; Mann et al., 2009; Ljungqvist, 2010), and the Community Earth System Model-Last Millennium Ensemble (CESM-LME) simulations (Otto-Bliesner et al., 2015), also all show a cooling trend (Fig. 5C, 5D, 5E, 5I).

Differences in the pollen-based temperature reconstructions reflect a variety of differences in both data and methods. Vialou et al. (2006), for example, used 752 pollen records and 4590 modern calibration samples, whereas Williams et al. (2011) used 863 pollen records that had updated age models based on linear interpolation between age controls (2004), and 4833 modern calibration samples (Whitmore et al., 2005). Both studies used slightly different versions of the modern analogue technique, which numerically compares the differences in fossil pollen composition of each sediment sample with the composition of each modern sample from a calibration dataset. The environmental characteristics of the most similar modern samples are then averaged and assigned to the target fossil sample (Williams and Shuman, 2008). Data from Trouet et al. 2013 are from a broader source area. Differences in analysis methods and techniques, however, are likely less important than the differences in the underlying datasets, the age controls, and the smoothing methods. For the NE US, the Williams et al. 2011 reconstruction matches the domain most closely and is thus the most relevant (Fig. 5H).

The broad decline in temperatures during the past three millennia in the NE US is consistent with the continuation of neoglacial cooling since the early Holocene (Gajewski, 1987), attributed primarily to decreasing summer insolation. The bias towards summer season temperatures in most paleoclimate archives is well known. Tree rings (maximum latewood density), isotopic analyses from speleothems, and lake sediments, for example, all largely reflect summer processes (Hu et al., 2001). However, regional cooling is also evidenced by changes in forest composition, including increases in boreal forest components such as spruce (*Picea*) and fir (*Abies*) (Davis, 1980; Jackson, 1989; Shuman et al., 2004; Oswald et al., 2007), and the pollen-based mean annual temperature reconstruction from Williams et al. (2011) reflect this (Fig. 5H).

Centennial-scale temperature variations are evident in many of the records, but only a few time periods show coherent changes across multiple data sources (which may partly reflect real spatial variability in climate). For example, a marked increase in temperature is evident at the onset of the MCA about 1000 years ago, particularly in the tree-ring, multi-proxy, and pollen-based reconstructions (Fig. 5C, 5D, 5F, and 5H). Hemispheric temperatures during the MCA were slightly lower than modern temperatures (Ahmed et al., 2013), and this appears true in the Mann et al. (2009) record, and in some of the pollen-based reconstructions (Fig. 5C-D, 5H-I), but these do not account for increasing human impacts on vegetation in recent centuries. Warming at the onset of the MCA generally gives way to continued cooling, and relatively low temperatures are recorded in all the proxies during the LIA. However, the broader-scale reconstructions (Fig. 5D, 5E, 5G) show their lowest temperatures at around 1800 CE. The two reconstructions specific to the NE US – the Williams et al. (2011) pollen-based temperature reconstruction and the Mann et al. (2009) multiproxy reconstruction – as well as the Esper et al. (2002) tree-ring record show their lowest temperatures around 1600 CE. A general cooling during the LIA is consistent across all the reconstructions and simulations, with the exception of the Vialou et al. (2006) pollen-based reconstruction (Fig. 5F).

Recent warming is evident in most of the temperature reconstructions and also in the climate simulations, generally beginning one to two centuries ago and increasing steadily towards present. Historical temperature data become abundant at this time and offer more detailed insight into spatial patterns within the NE US (Fig. 6). Consistent with the National Climate Assessments from the Midwest and Northeast (Kunkel et al., 2013), EOF analysis of the historic weather station data from the

5 GHCN indicate a general warming trend in both the eastern and western parts of the NE; there is a strong west-to-east gradient however over the past century (Fig. 6A, 6B). The EOFs account for 16% and 8% respectively (the next are 5, 4 and 3% respectively). The west (northwest especially) showed an early- to mid-century maximum in temperatures and high variability (green line in 6C), while the Atlantic margin experienced strong warming throughout the century (Fig. 6C, brown line). The second EOF (Fig. 6B, D) shows a northwest to northeast temperature gradient, which is largely inverse to the first EOF (Fig. 6A, C). In

10 the secondary EOF pattern, higher variability is evident in the warming trend of annual temperatures from the northwest (Fig. 6D, brown line) than the same pattern along the Atlantic seaboard (Fig. 6C, brown line). Likewise, the early- to mid-century warm period (Fig. 6C, D, green lines) is less variable along the Atlantic seaboard (Fig. 6D), and smaller in magnitude than the same pattern in the northwest (Fig. 6C). Western and eastern NE US pollen-based temperature reconstructions show little difference, however (not shown), and the lack of other regional paleotemperature data limit finer spatial analyses within the

15 domain prior to the historical era.

Given the limited regional NE US paleo temperature data, and especially given that the Williams et al. (2011) pollen data have not been adjusted for recent human impacts, it is impossible to accurately compare modern and late-Holocene temperature changes in this region. The recent reversal of the long-term cooling trend is clear in the broad-scale records, however. More detailed analyses of pollen and tree-ring data, along with continuing development of new regional paleo temperature

20 reconstructions are needed to better contextualize current warming, and to examine the spatial expression of regional climate variations during the MCA and LIA. The relationship between seasonal variations and long-term trends also remains unclear, but may be revealed with further analyses. Additional studies may also help determine synchrony and asynchrony of temperatures between the NE US and other regions.



4.3 Reconstructed Hydroclimate Variations in the NE US for the Last 3,000 Years

25 Paleohydrological records are more abundant than paleotemperature records in the NE US (Fig. 7), but as with the temperature records, more data are available near the coast than inland. Tree-rings (Fig. 7A), varve thicknesses (Fig. 7B), lake levels (Fig. 7G), and simulations (Fig. 7H) can provide information about trends, but the bog (Fig. 7C), SVR (Fig. 7E), and IRM data (Fig. 7F) are more suited to capturing discrete events. Together, the tree-ring PDSI (especially from the coastal areas), varve, and lake level records indicate a long-term increase in effective moisture throughout the past 3000 years, with more evidence

30 accumulating towards present (Fig. 7A, 7B, 7G). The bog records, which are divided into western (from Michigan and Indiana) and eastern sites (from Maine), do not appear to show a substantial increase or decrease in the number of events over time.



Centennial scale variability is superimposed on the records showing a long-term trend, suggesting that large droughts and pluvials (anomalously wet periods) were not uncommon in the past 3000 years. The earliest period of drought that appears in

multiple records occurs in the eastern bog sites (Fig. 7C, blue) at 400 BCE and 100 CE. The SVR and lake levels also indicate relatively dry conditions compared to the past millennium.

The lake level, IRM, and tree-ring data (Fig. 7A, 7F, 7G) together suggest that marked shifts in hydroclimate also occurred between 300 to 800 CE, or between 1650 and 1150 years ago. The lake level and IRM data both indicate a long period of drought from about 550 to 750 CE (1400-1200 cal yr BP). Sluice Pond in northeastern Massachusetts (Hubeny et al., 2015) and Piermont Marsh in the Hudson Valley, though not included in this synthesis, also indicate drought during this interval (Pederson et al., 2005). The PDSI reconstruction from tree-rings (Fig. 7A) show high variability from 400 to 600 CE as well.

Many of the NE US hydroclimate records indicate dry conditions during the MCA. Around 1100 CE the Atlantic PDSI reconstruction shows a large departure indicating prolonged, widespread drought (Fig. 7A), and the varve thickness index (Fig. 7B) also shows very dry conditions. Both the western and eastern bog sites show frequent drought during the MCA as well (Fig. 7C). Drought is not evident in the lake level reconstructions during the MCA, however (Fig. 7G), whereas reduced precipitation is evident in the TraCE-21k simulations, both in the precipitation rate anomalies and in the P-E rate anomalies (Fig. 7H).

The transition from the MCA to the LIA at about 1400 CE ago brings an increase in moisture or a decrease in drought events in most records, including tree-rings (Fig. 7A), varve thicknesses (Fig. 7B), the bog records (Fig. 7C), the SVR record (Fig. 7E), and the lake-levels (Fig. 7G). Progressively wetter conditions follow in the PDSI and varve records, which both have annual resolution and are strongly correlated with instrumental records (Fig. 7A, 7B).

Considering the NE US moisture records (Fig. 7) in the context of the temperature records (Fig. 5) highlights some relationships in the timing of climate changes and hints at synoptic climate controls. Cold intervals recorded in the SST (Fig. 5A, 5B) and two of the pollen data sets (Fig. 5G, 5H) around 500 CE, for example, coincide with drought events in the IRM and some of the lake level data (Fig. 7F, 7G). The timing is not consistently synchronous in these records, but this period is characterized in general by relatively large shifts in both temperature and moisture. Such oscillations alone may help explain a sharp rise in chestnut and hemlock in the northeast, coupled with a large increase in charcoal influx in some areas around the the same time (Foster et al., 2002; Parshall et al., 2003). Similarly large climate shifts are observed in both the temperature and hydroclimate records during the MCA, particularly around 1000 CE, and throughout the LIA. Given the limitations and diversity of the current paleoclimate dataset for the NE US, further exploration of potential synoptic climate influences on these events are beyond the scope of the current study.

In the most recent century, an acceleration of the gradual wetting trend is observed in PDSI records, the varve index, and the lake level reconstruction from Whitehead Lake. The SVR and western bog records, in contrast, show increasing drought events during recent centuries. Given the complexities of droughts, which have unique spatial signatures, severities, durations, and other characteristics, it is not surprising that different recorders of drought may show diverging patterns. In addition to the physical differences that may register in different proxies, many bogs (Great Heath in particular) have experienced increasing human influences in recent centuries that may have disturbed water levels. Uncertainties also increase therefore in the recent past in these records. Another factor that may contribute to differences in results more generally are seasonality differences.

With the exception of the lake level records, the hydroclimate data (like the temperature proxies) may over-represent growing season relative to annual changes.

Some insight can be gained into the spatial differences in drought by comparing PDSI reconstructions from different sub-regions, as apparent in the unique trends from the Midwestern and North Atlantic coastal sites (Fig. 7A). The MCA and LIA dry intervals apparent in the easternmost sites, for example, do not appear in the Midwestern sites. Spatial structure in NE US drought can be also be observed through EOF analysis of the NADA data (Fig. 8). From 1700 to 2005 CE, there are three primary patterns, although none of these explain substantial variance. The strongest pattern (13% of the variance explained) shows drought centered in the Midwest, similar to the historical drought of 1931-1940 (the "Dust Bowl"). The second EOF (9% of the variance) has a pattern similar to the southwest drought of 1950-1957. A third EOF (explaining 8% of the variance) reflects widespread drought in the southeast, similar to the 1889-1896 event (Herweijer et al., 2005) and also to the 1960s drought. The low variance explained by any one particular EOF means that drought patterns have been heterogeneous in the recent past. The pattern reflected in the third EOF, however, reinforces the notion that widespread drought in the east is not uncommon.

Short-lived disturbances such as storms can have dramatic impacts on ecosystems in the NE US (Besonen et al., 2008; Donnelly et al., 2001), but are considered less often in paleoclimate studies because they are very difficult to reconstruct. Erosion patterns inferred from particle size variations in six northern New England lakes suggest an increase in extreme precipitation events during recent millennia, for example Parris et al. (2010), but Noren et al. tell a slightly different story with the same approach for New Hampshire. A synthesis of all New England storms of at least tropical storm impact shows no long-term trend in either hurricanes or all tropical cyclones (Fig. 9). Storm activity was high in the 1950s, however, and low in the early 20th century and mid-late 18th century. The storminess during the 1950s may be part of a broader pattern of Atlantic hurricane activity related to the Atlantic Multidecadal Oscillation (e.g. Goldenberg et al., 2001). About 0-2 hurricanes occurred per year since 1743, and major hurricanes (Category 3, 4 or 5 on the Saffir Simpson scale) are very rare. Relative stability in hurricane occurrence during the past 260 years highlights the importance of unique daily synoptic patterns conducive for tracking storms towards New England, and suggests that forcings like solar activity and greenhouse gases have had limited effect on overall numbers in New England. Storm activity does not appear anomalous during the end of the LIA. Some past storms with hurricane-force winds are likely similar to those in recent memory, such as post-hurricane Sandy in 2012, the Perfect Storm in 1991, and the Halloween Nor'easter of 2011.

5 Conclusions

With the exception of fossil pollen records, there are a limited number of northeastern US (NE US) paleoclimate archives that can provide constraints on its temperature and hydroclimate history. The regional paleoclimate data that do exist suggest that the current warming and wetting trend reflects a reversal of millennial-scale cooling and wetting trends prior to the 1800s, although seasonal differences in proxy sensitivities complicate interpretation. Nonetheless, pollen data, coastal SST marine records, and broader-scale multi-proxy networks suggest regional pre-industrial cooling over the late Holocene. Evidence for a

trend towards wetter conditions in the past 3000 years is strong in the lake-level data, and for the past millennium in additional hydroclimate data.

Hydroclimate reconstructions from testate amoeba in bogs are a particularly promising resource for paleoclimate studies because their spatiotemporal domain overlaps many other proxies (Fig. 3), they show strong correlations with local PDSI data (Booth, 2010). These data can therefore provide an independent source of convergent evidence for local droughts and other changes. However, understanding regional changes with testate amoeba records is difficult, because they do not reliably record low frequency trends. Further analyses of drought frequencies, or of other drought characteristics, may make WTD reconstructions more comparable to other hydroclimatic proxies, and more useful in modeling contexts.

Taken together, currently available paleo evidence suggests that the NE US climate became generally cooler and wetter during the late Holocene. The MCA was also substantially warmer and drier than the LIA along the Atlantic coast. Multiple types of paleo data, from sediments and trees, suggest that major droughts in the late Holocene were not uncommon in the NE US. Two particularly dry periods occurred around 700 CE and again around 1100 CE during the MCA. No trend is evident in storm frequency in New England, but increasing rates of change in both growing-season temperature and moisture will likely have significant impacts on vegetation and disturbance regimes. New calibrated paleoclimate records will help constrain spatiotemporal variations in temperature and precipitation in the NE.

Author contributions. JRM, BS, SG, CN, and NP designed the study, RB, EC, AD-K, CM, JN, NP, BS, and ZY provided data, JRM, SG, CN, and PJB analyzed the data, JRM, NP, and SG wrote the initial manuscript draft, and all authors contributed to writing and editing

Acknowledgements. We thank Matthew Montanaro for assistance with data analysis. This work was supported by NSF grant EF-1065732 to SJ, JW, and JM and by NSF grant EF-1241870 to JRM, NP, RB, SJ, JM, DJPM, and JW.

References

- Ahmed, M., Anchukaitis, K., Buckley, B. M., Braida, M., Borgaonkar, H. P., Asrat, A., Cook, E. R., Büntgen, U., Chase, B. M., Christie, D. A., et al.: Continental-Scale Temperature Variability during the Past Two Millennia: Supplementary Information, *Nature Geoscience*, 6, 2013.
- 5 Almendinger, J.: A groundwater model to explain past lake levels at barkers Prairie, Minnesota, USA, *The Holocene*, 3, 105–115, 1993.
- Almquist, H., Dieffenbacher-Krall, A. C., Flanagan-Brown, R., and Sanger, D.: The Holocene record of lake levels of Mansell Pond, central Maine, USA, *The Holocene*, 11, 189–201, 2001.
- Anderson, B., Hayhoe, K., and Liang, X.-Z.: Anthropogenic-induced changes in twenty-first century summertime hydroclimatology of the Northeastern US, *Climatic Change*, 99, 403–423, 2010.
- 10 Austin, J. A. and Colman, S. M.: Lake Superior summer water temperatures are increasing more rapidly than regional air temperatures: A positive ice-albedo feedback, *Geophysical Research Letters*, 34, n/a–n/a, doi:10.1029/2006GL029021, 106604, 2007.
- Balco, G., Belknap, D., and Kelley, J.: Paleoclimatic Implications of Holocene Lake-Level Fluctuations, Owasco Lake, New York: A Comment, *Geology*, 25, 383–384, 1997.
- Balco, G., Belknap, D. F., and Kelley, J. T.: Glacioisostasy and lake-level change at Moosehead Lake, Maine, *Quaternary Research*, 49, 157–170, 1998.
- 15 Bartlein, P. and Webb, T. I.: Mean July temperature at 6000 yr B.P. in eastern North America: regression equations for estimates from fossil-pollen data, *Syllogeus*, 55, 301–342, 1985.
- Bartlein, P., Harrison, S., Brewer, S., Connor, S., Davis, B., Gajewski, K., Guiot, J., Harrison-Prentice, T., Henderson, A., Peyron, O., Prentice, C., Scholze, M., Seppä, H., Shuman, B., Sugita, S., Thompson, R., Viau, A., Williams, J., and Wu, H.: Pollen-based continental climate reconstructions at 6 and 21 ka: a global synthesis, *Climate Dynamics*, 37, 775–802, 2011.
- 20 Battarbee, R., Anderson, N., Bennion, H., and Simpson, G.: Combining limnological and palaeolimnological data to disentangle the effects of nutrient pollution and climate change on lake ecosystems: problems and potential, *Freshwater Biology*, 57, 2091–2106, 2012.
- Besonen, M. R., Bradley, R. S., Mudelsee, M., Abbott, M. B., and Francus, P.: A 1,000-year, annually-resolved record of hurricane activity from Boston, Massachusetts, *Geophysical Research Letters*, 35, 2008.
- 25 Bhuta, A. A., Kennedy, L. M., and Pederson, N.: Climate-radial growth relationships of northern latitudinal range margin longleaf pine (*Pinus palustris* P. Mill.) in the Atlantic coastal plain of southeastern Virginia, *Tree-Ring Research*, 65, 105–115, 2009.
- Birks, H. H.: Plant macrofossils, in: *Tracking environmental change using lake sediments*, pp. 49–74, Springer, 2002.
- Birks, H. H. and Birks, H.: Future uses of pollen analysis must include plant macrofossils, *Journal of biogeography*, 27, 31–35, 2000.
- Bishop, D. A. and Pederson, N.: Regional Variation of Transient Precipitation and Rainless-day Frequency Across a Subcontinental Hydro-climate Gradient, *Journal of Extreme Events*, p. 1550007, 2015.
- 30 Black, B. A., Griffin, D., van der Sleen, P., Wanamaker, A. D., Speer, J. H., Frank, D. C., Stahle, D. W., Pederson, N., Copenheaver, C. A., Trouet, V., et al.: The value of crossdating to retain high-frequency variability, climate signals, and extreme events in environmental proxies, *Global change biology*, 2016.
- Blois, J., Williams, J., Grimm, E., Jackson, S., and Graham, R.: A methodological framework for improved paleovegetation mapping from late-Quaternary pollen records, *Quaternary Science Reviews*, 30, 1926–1939, 2011.
- 35 Boeff, K. A., Strock, K. E., and Saros, J. E.: Evaluating planktonic diatom response to climate change across three lakes with differing morphometry, *Journal of Paleolimnology*, 56, 33–47, 2016.

- Bond, G., Kromer, B., Beer, J., Muscheler, R., Evans, M., Showers, W., Hoffmann, S., Lotti-Bond, R., Hajdas, I., and Bonani, G.: Persistent solar influence on north Atlantic climate during the Holocene, *Science*, 294, 2130, iSSN: 0036-8075 CODEN: SCIEAS, 2001.
- Booth, R., Lamentowicz, M., and Charman, D.: Preparation and analysis of testate amoebae in peatland paleoenvironmental studies, *Mires and Peat*, 7, 1–7, 2010.
- 5 Booth, R. K.: Testate amoebae as proxies for mean annual water table depth in Sphagnum dominated peatlands of North America, *Journal of Quaternary Science*, 23, 43–57, 2008.
- Booth, R. K.: Testing the climate sensitivity of peat-based paleoclimate reconstructions in mid-continental North America, *Quaternary Science Reviews*, 29, 720–731, 2010.
- Booth, R. K. and Jackson, S. T.: A high-resolution record of late-Holocene moisture variability from a Michigan raised bog, USA, *The Holocene*, 13, 863–876, 2003.
- 10 Booth, R. K., Jackson, S. T., and Thompson, T. A.: Paleoecology of a northern Michigan lake and the relationship among climate, vegetation, and Great Lakes water levels, *Quaternary Research*, 57, 120–130, 2002.
- Booth, R. K., Notaro, M., Jackson, S. T., and Kutzbach, J. E.: Widespread drought episodes in the western Great Lakes region during the past 2000 years: geographic extent and potential mechanisms, *Earth and Planetary Science Letters*, 242, 415–427, 2006.
- 15 Booth, R. K., Jackson, S. T., Sousa, V. A., Sullivan, M. E., Minckley, T. A., and Clifford, M. J.: Multi-decadal drought and amplified moisture variability drove rapid forest community change in a humid region, *Ecology*, 93, 219–226, 2012.
- Bradbury, J.: Charcoal deposition and redeposition in Elk Lake, Minnesota, *The Holocene*, 6, 349–344, 1996.
- Brassell, S., Eglinton, G., Marlowe, I., Pflaumann, U., and Sarnthein, M.: Molecular stratigraphy: a new tool for climatic assessment, *Nature*, 320, 129–133, 1986.
- 20 Castañeda, I. S., Werne, J. P., Johnson, T. C., and Powers, L. A.: Organic geochemical records from Lake Malawi (East Africa) of the last 700 years, part II: Biomarker evidence for recent changes in primary productivity, *Palaeogeography, Palaeoclimatology, Palaeoecology*, 303, 140–154, 2011.
- Charman, D. J. and Blundell, A.: A new European testate amoebae transfer function for palaeohydrological reconstruction on ombrotrophic peatlands, *Journal of Quaternary Science*, 22, 209–221, 2007.
- 25 Charman, D. J., Brown, A. D., Hendon, D., and Karofeld, E.: Testing the relationship between Holocene peatland palaeoclimate reconstructions and instrumental data at two European sites, *Quaternary Science Reviews*, 23, 137–143, 2004.
- Charman, D. J., Blundell, A., Chiverrell, R. C., Hendon, D., and Langdon, P. G.: Compilation of non-annually resolved Holocene proxy climate records: stacked Holocene peatland palaeo-water table reconstructions from northern Britain, *Quaternary Science Reviews*, 25, 336–350, 2006.
- 30 Charman, D. J., Barber, K. E., Blaauw, M., Langdon, P. G., Mauquoy, D., Daley, T. J., Hughes, P. D., and Karofeld, E.: Climate drivers for peatland palaeoclimate records, *Quaternary Science Reviews*, 28, 1811–1819, 2009.
- Clifford, M. J. and Booth, R. K.: Increased probability of fire during late Holocene droughts in northern New England, *Climatic Change*, 119, 693–704, 2013.
- Clifford, M. J. and Booth, R. K.: Late-Holocene drought and fire drove a widespread change in forest community composition in eastern North America, *The Holocene*, p. 0959683615580182, 2015.
- 35 Conkey, L. E.: Eastern US Tree-ring Widths and Densities as Indicators of Past Climate, Ph.D. thesis, 1982.
- Conkey, L. E.: Red spruce tree-ring widths and densities in eastern North America as indicators of past climate, *Quaternary Research*, 26, 232–243, 1986.

- Cook, E. and Krusic, P.: North American summer PDSI reconstructions, IGBP PAGES/World Data Center for Paleoclimatology Data Contribution Series, 45, 2004.
- Cook, E. and Krusic, P.: North American summer PDSI reconstructions, version 2a, IGBP PAGES/World Data Center for Paleoclimatology Data Contribution Series, 46, 2008, 2008.
- 5 Cook, E. R.: Tree rings as indicators of climatic change and the potential response of forests to the greenhouse effect, *Global climate change and life on earth*. London, Routledge: Chapman & Hall, pp. 56–64, 1991.
- Cook, E. R. and Kairiukstis, L. A.: *Methods of dendrochronology: applications in the environmental sciences*, Springer Science and Business Media, 1990.
- Cook, E. R. and Pederson, N.: Uncertainty, emergence, and statistics in dendrochronology, pp. 77–112, Springer, 2011.
- 10 Cook, E. R. and Peters, K.: Calculating unbiased tree-ring indices for the study of climatic and environmental change, *The Holocene*, 7, 361–370, 1997.
- Cook, E. R., Woodhouse, C. A., Eakin, C. M., Meko, D. M., and Stahle, D.: Long-term aridity changes in the western United States, *Science*, 306, 1015–1018, 2004.
- Cook, E. R., Anchukaitis, K. J., Buckley, B. M., D’Arrigo, R. D., Jacoby, G. C., and Wright, W. E.: Asian monsoon failure and megadrought
15 during the last millennium, *Science*, 328, 486–489, 2010.
- Crucifix, M.: Traditional and novel approaches to palaeoclimate modelling, *Quaternary Science Reviews*, 57, 1–16, 2012.
- Davis, M.: Holocene Climate of New England, *Quaternary Research*, 14, 240–250, 1980.
- Dieffenbacher-Krall, A. C. and Nurse, A. M.: Late-glacial and Holocene record of lake levels of Mathews Pond and Whitehead Lake, northern Maine, USA, *Journal of Paleolimnology*, 34, 283–309, 2005.
- 20 Digerfeldt, G.: Studies on past lake-level fluctuations, *Handbook of Holocene palaeoecology and palaeohydrology*, 127, 143, 1986.
- Digerfeldt, G., Almendinger, J. E., and Björck, S.: Reconstruction of past lake levels and their relation to groundwater hydrology in the Parkers Prairie sandplain, west-central Minnesota, *Palaeogeography, Palaeoclimatology, Palaeoecology*, 94, 99–118, 1992.
- Donnelly, J. P., Roll, S., Wengren, M., Butler, J., Lederer, R., and Webb, T.: Sedimentary evidence of intense hurricane strikes from New Jersey, *Geology*, 29, 615–618, 2001.
- 25 Donovan, J. J., Smith, A. J., Panek, V. A., Engstrom, D. R., and Ito, E.: Climate-driven hydrologic transients in lake sediment records: calibration of groundwater conditions using 20th century drought, *Quaternary Science Reviews*, 21, 605–624, 2002.
- Eglinton, G. and Hamilton, R. J.: Leaf epicuticular waxes, *Science*, 156, 1322–1335, 1967.
- Eglinton, T. I. and Eglinton, G.: Molecular proxies for paleoclimatology, *Earth and Planetary Science Letters*, 275, 1–16, 2008.
- Esper, J., Cook, E. R., and Schweingruber, F.: Low-Frequency Signals in Long Tree-Ring Chronologies for Reconstructing Past Temperature
30 Variability, *Science*, 295, 2250–2253, 2002.
- Esper, J., Frank, D. C., Timonen, M., Zorita, E., Wilson, R. J., Luterbacher, J., Holzkämper, S., Fischer, N., Wagner, S., Nievergelt, D., et al.: Orbital forcing of tree-ring data, *Nature Climate Change*, 2, 862–866, 2012.
- Evans, M. N., Tolwinski-Ward, S. E., Thompson, D. M., and Anchukaitis, K. J.: Applications of proxy system modeling in high resolution paleoclimatology, *Quaternary Science Reviews*, 76, 16–28, 2013.
- 35 Foster, D. R., Clayden, S., Orwig, D. A., Hall, B., and Barry, S.: Oak, chestnut and fire: climatic and cultural controls of long-term forest dynamics in New England, USA, *Journal of Biogeography*, 29, 1359–1379, 2002.
- Freeman-Lynde, R., Hutchinson, D., Folger, D., Wiley, B., and Hewett, M.: The origin and distribution of subbottom sediments in southern Lake Champlain, *Quaternary Research*, 14, 224–239, 1980.

- Fritts, H.: *Tree Rings and Climate*, Academic Press, New York, NY, perhaps the most cited reference in all of dendrochronology. Everything you need to know about the climate/tree growth relationship is here, including response functions, reconstructions of climate, and basic tree physiology concerning the formation of annual rings., 1976.
- Fritz, S.: Paleolimnological records of climatic change in North America, *Limnological Oceanography*, 41, 882–889, 1996.
- 5 Fritz, S. C., Ito, E., Yu, Z., Laird, K. R., and Engstrom, D. R.: Hydrologic variation in the northern Great Plains during the last two millennia, *Quaternary Research*, 53, 175–184, 2000.
- Fuller, J. L., Foster, D. R., McLachlan, J. S., and Drake, N.: Impact of human activity on regional forest composition and dynamics in central New England, *Ecosystems*, 1, 76–95, 1998.
- Fye, F. K., Stahle, D. W., and Cook, E. R.: Paleoclimatic analogs to twentieth-century moisture regimes across the United States, *Bulletin of the American Meteorological Society*, 84, 901–909, 2003.
- 10 Gajewski, K.: Climatic impacts on the vegetation of eastern North America during the past 2000 years, *Vegetatio*, 68, 179–190, 1987.
- Gajewski, K.: Late Holocene climate changes in eastern North America estimated from pollen data, *Quaternary Research*, 29, 255–262, 1988.
- Garreta, V., Miller, P. A., Guiot, J., Hély, C., Brewer, S., Sykes, M. T., and Litt, T.: A method for climate and vegetation reconstruction through the inversion of a dynamic vegetation model, *Climate Dynamics*, 35, 371–389, 2010.
- 15 Geiss, C. E., Umbanhowar, C. E., Camill, P., and Banerjee, S. K.: Sediment magnetic properties reveal Holocene climate change along the Minnesota prairie-forest ecotone, *Journal of Paleolimnology*, 30, 151–166, 2003.
- George, S. S. and Nielsen, E.: Hydroclimatic change in southern Manitoba since AD 1409 inferred from tree rings, *Quaternary Research*, 58, 103–111, 2002.
- 20 Gignac, L. D.: Bryophytes as indicators of climate change, *The Bryologist*, 104, 410–420, 2001.
- Goldenberg, S. B., Landsea, C. W., Mestas-Núñez, A. M., and Gray, W. M.: The recent increase in Atlantic hurricane activity: Causes and implications, *Science*, 293, 474–479, 2001.
- Goring, S., Williams, J., Blois, J., Jackson, S., Paciorek, C., Booth, R., Marlon, J., Blaauw, M., and Andres, C.: Deposition times in the northeastern United States during the Holocene: establishing valid priors for Bayesian age models, *Quaternary Science Reviews*, 48, 54–60, 2012.
- 25 Hayhoe, K., Wake, C., Huntington, T., Luo, L., Schwartz, M., Sheffield, J., Wood, E., Anderson, B., Bradbury, J., DeGaetano, A., Troy, T., and Wolfe, D.: Past and future changes in climate and hydrological indicators in the US Northeast, *Climate Dynamics*, 28, 381–407, 2007.
- Herbert, T.: Review of alkenone calibrations (culture, water column, and sediments), *Geochemistry, Geophysics, Geosystems*, 2, 2001.
- Herweijer, C., Seager, R., Cook, E. R., and Emile-Geay, J.: North American Droughts of the Last Millennium from a Gridded Network of Tree-Ring Data, *Journal of Climate*, 20, 1353–1376, 2005.
- 30 Hodgkins, G. A.: The importance of record length in estimating the magnitude of climatic changes: an example using 175 years of lake ice-out dates in New England, *Climatic change*, 119, 705–718, 2013.
- Hopton, H. M. and Pederson, N.: Climate sensitivity of Atlantic white cedar at its northern range limit, in: *Atlantic White Cedar: Ecology, Restoration and Management: Proceedings of the Arlington Echo Symposium*. Gen. Tech. Rep. SRS-91. USDA-Forest Service, Southern Research Station, Asheville, NC. Asheville, NC: USDA Forest Service Southern Research Station, pp. 22–30, 2005.
- 35 Horton, R., Yohe, G., Easterling, W., Kates, R., Ruth, M., Sussman, E., Whelchel, A., Wolfe, D., and Lipschultz, F.: *Climate Change Impacts in the United States: The Third National Climate Assessment*, vol. Ch. 16, pp. 16–1–nn, U.S. Global Change Research Program, 2014.

- Hou, J., Huang, Y., Wang, Y., Shuman, B., Oswald, W., Faison, E., and Foster, D.: Postglacial climate reconstruction based on compound-specific D/H ratios of fatty acids from Blood Pond, New England, *Geochemistry, Geophysics, Geosystems*, 7, Q03 008, 2006.
- Hou, J., Huang, Y., Oswald, W., Foster, D., and Shuman, B.: Centennial-scale compound-specific hydrogen isotope record of Pleistocene-Holocene climate transition from southern New England, *Geophysical Research Letters*, 34, L19 706, 2007.
- 5 Hu, F., Ito, E., Brown, T., Curry, B., and Engstrom, D.: Pronounced climatic variations in Alaska during the last two millennia, *Proceedings of the National Academy of Sciences*, 98, 10 552–10 556, 2001.
- Huang, Y., Shuman, B., Wang, Y., and Webb III, T.: Hydrogen isotope ratios of palmitic acid in lacustrine sediments record late-Quaternary climate variations, *Geology*, 30, 1103–1106, 2002.
- Hubeny, B. J., King, J. W., and Reddin, M.: Northeast US precipitation variability and North American climate teleconnections interpreted from late Holocene varved sediments, *Proceedings of the National Academy of Sciences*, 108, 17 895–17 900, 2011.
- 10 Hubeny, J. B., McCarthy, F. M., Lewis, J., Drljepan, M., Morissette, C., King, J. W., Cantwell, M., Hudson, N. M., and Crispo, M. L.: The paleohydrology of Sluice Pond, NE Massachusetts, and its regional significance, *Journal of Paleolimnology*, 53, 271–287, 2015.
- Hutchinson, D., Ferrebee, W., Knebel, H., Wold, R., and Isachsen, Y.: The sedimentary framework of the southern basin of Lake George, New York, *Quaternary Research*, 15, 44–61, 1981.
- 15 Jackson, S., Webb, R., Anderson, K., Overpeck, J., Webb, T. I., Williams, J., and Hansen, B.: Vegetation and environment in unglaciated eastern North America during the last glacial maximum, *Quaternary Science Reviews*, 19, 489–508, 2000.
- Jackson, S. T.: Postglacial vegetational changes along an elevational gradient in the Adirondack Mountains (New York): a study of plant macrofossils, University of the State of New York, State Education Department, New York State Museum, Biological Survey, 1989.
- Juggins, S. and Birks, H. J. B.: Quantitative environmental reconstructions from biological data, in: *Tracking environmental change using lake sediments*, pp. 431–494, Springer, 2012.
- 20 Karl, T. R.: *Global climate change impacts in the United States*, Cambridge University Press, 2009.
- Karner, M. B., DeLong, E. F., and Karl, D. M.: Archaeal dominance in the mesopelagic zone of the Pacific Ocean, *Nature*, 409, 507–510, 2001.
- Keigwin, L. D., Sachs, J. P., and Rosenthal, Y.: A 1600-year history of the Labrador Current off Nova Scotia, *Climate Dynamics*, 21, 53–62, 2003.
- 25 Kunkel, K. E., Stevens, L. E., Stevens, S. E., Sun, L., Janssen, E., Wuebbles, D., Rennells, J., DeGaetano, A., and Dobson, J. G.: *Regional Climate Trends and Scenarios for the U.S. National Climate Assessment: Part 1. Climate of the Northeast U.S.*, 2013.
- Leng, M. J. and Marshall, J. D.: Palaeoclimate interpretation of stable isotope data from lake sediment archives, *Quaternary Science Reviews*, 23, 811–831, 2004.
- 30 Li, Y.-X., Zicheng, Y., and Kodama, K. P.: Sensitive moisture response to Holocene millennial-scale climate variations in the Mid-Atlantic region, USA, *The Holocene*, 1, 3–8, 2007.
- Lindbladh, M., Jacobson, G. L., and Schauffler, M.: The postglacial history of three *Picea* species in New England, USA, *Quaternary Research*, 59, 61–69, 2003.
- Liu, Z., Otto-Bliesner, B. L., He, F., Brady, E. C., Tomas, R., Clark, P. U., Carlson, A. E., Lynch-Stieglitz, J., Curry, W., Brook, E., Erickson, D., Jacob, R., Kutzbach, J., and Cheng, J.: Transient simulation of last deglaciation with a new mechanism for Bolling-Allerod warming, *Science*, 325, 310–314, 2009.
- 35 Ljungqvist, F.: A new reconstruction of temperature variability in the extra-tropical northern hemisphere during the last two millennia, *Geografiska Annaler: Series A*, 92, 339–351, 2010.

- Loader, C.: Locfit: Local regression, likelihood and density estimation, R package version, 1, 2007.
- Mann, M., Zhang, Z., Rutherford, S., Bradley, R. S., Hughes, M. K., Shindell, D., Ammann, C., Faluvegi, G., and Ni, F.: Global signatures and dynamical origins of the Little Ice Age and Medieval Climate Anomaly, *Science*, 326, 1256–1260, 2009.
- Marcott, S. A., Shakun, J. D., Clark, P. U., and Mix, A. C.: A reconstruction of regional and global temperature for the past 11,300 years, *Science*, 339, 1198–1201, 2013.
- Marsicek, J. P., Shuman, B., Brewer, S., Foster, D. R., and Oswald, W. W.: Moisture and temperature changes associated with the mid-Holocene Tsuga decline in the northeastern United States, *Quaternary Science Reviews*, 80, 129–142, 2013.
- Mason, I., Guzkowska, M., Rapley, C., and Street-Perrott, F.: The response of lake levels and areas to climatic change, *Climatic change*, 27, 161–197, 1994.
- Maxwell, R. S., Hessler, A. E., Cook, E. R., and Pederson, N.: A multispecies tree ring reconstruction of Potomac River streamflow (950–2001), *Water Resources Research*, 47, 2011.
- McEwan, R., Dyer, J., and Pedersen, N.: Multiple interacting ecosystem drivers: toward an encompassing hypothesis of oak forest dynamics across eastern North America, *Ecography*, 34, 244–256, 2011.
- Meko, D., Cook, E. R., Stahle, D. W., Stockton, C. W., and Hughes, M. K.: Spatial patterns of tree-growth anomalies in the United States and southeastern Canada, *Journal of Climate*, 6, 1773–1786, 1993.
- Menking, K. M., Peteet, D. M., and Anderson, R. Y.: Late-glacial and Holocene vegetation and climate variability, including major droughts, in the Sky Lakes region of southeastern New York State, *Palaeogeography, Palaeoclimatology, Palaeoecology*, 353, 45–59, 2012.
- Meyers, P. A.: Applications of organic geochemistry to paleolimnological reconstructions: a summary of examples from the Laurentian Great Lakes, *Organic geochemistry*, 34, 261–289, 2003.
- Mitchell, E. A., Charman, D. J., and Warner, B. G.: Testate amoebae analysis in ecological and paleoecological studies of wetlands: past, present and future, *Biodiversity and Conservation*, 17, 2115–2137, 2008.
- Mock, C. J.: Tropical cyclone variations in Louisiana, USA, since the late eighteenth century, *Geochemistry, Geophysics, Geosystems*, 9, 2008.
- Mock, C. J.: Early-Instrumental and Documentary Evidence of Environmental Change, pp. 345–360, 2012.
- Morris, P. J., Baird, A. J., Young, D. M., and Swindles, G. T.: Untangling climate signals from autogenic changes in long-term peatland development, *Geophysical Research Letters*, 42, 2015.
- Mullins, H. T. and Halfman, J. D.: High-resolution seismic reflection evidence for middle Holocene environmental change, Owasco Lake, New York, *Quaternary Research*, 55, 322–331, 2001.
- Newby, P., Donnelly, J. P., Shuman, B., and MacDonald, D.: Evidence of centennial-scale drought from southeastern Massachusetts during the Pleistocene/Holocene transition, *Quaternary Science Reviews*, 28, 1675–1692, 2009.
- Newby, P. E., Shuman, B. N., Donnelly, J. P., Karnauskas, K. B., and Marsicek, J.: Centennial-to-millennial hydrologic trends and variability along the North Atlantic Coast, USA, during the Holocene, *Geophysical Research Letters*, 41, 2014GL060183, 2014.
- Nichols, J. E. and Huang, Y.: Hydroclimate of the northeastern United States is highly sensitive to solar forcing, *Geophysical Research Letters*, 39, L04707, 2012.
- Noren, A., Bierman, P., Steig, E., Lini, A., and Southon, J.: Millennial-scale Storminess Variability in the Northeastern United States during the Holocene Epoch, *Nature*, 419, 821 – 824, 2002.
- Oswald, W. and Foster, D.: Middle-Holocene dynamics of *Tsuga canadensis* (eastern hemlock) in northern New England, USA, *The Holocene*, 22, 71–78, 2012.

- Oswald, W., Faison, E. K., Foster, D. R., Doughty, E. D., Hall, B. R., and Hansen, B.: Post-glacial changes in spatial patterns of vegetation across southern New England, *Journal of Biogeography*, 34, 900–913, 2007.
- Otto-Bliesner, B. L., Brady, E. C., Fasullo, J., Jahn, A., Landrum, L., Stevenson, S., Rosenbloom, N., Mai, A., and Strand, G.: Climate variability and change since 850 CE: an ensemble approach with the community earth system model (CESM), *Bull. Am. Meteorol. Soc.*, 5 2015.
- Parris, A. S., Bierman, P. R., Noren, A. J., Prins, M. A., and Lini, A.: Holocene paleostorms identified by particle size signatures in lake sediments from the northeastern United States, *Journal of Paleolimnology*, 43, 29–49, 2010.
- Parshall, T., Foster, D., Faison, E., MacDonald, D., and Hansen, B.: Long-term history of vegetation and fire in pitch pine-oak forests on Cape Cod, Massachusetts, *Ecology*, 84, 736–748, 2003.
- 10 Pederson, D. C., Peteet, D. M., Kurdyla, D., and Guilderson, T.: Medieval Warming, Little Ice Age, and European impact on the environment during the last millennium in the lower Hudson Valley, New York, USA, *Quaternary Research*, 63, 238–249, 2005.
- Pederson, N., Cook, E. R., Jacoby, G. C., Peteet, D. M., and Griffin, K. L.: The influence of winter temperatures on the annual radial growth of six northern range margin tree species, *Dendrochronologia*, 22, 7–29, 2004.
- Pederson, N., Bell, A. R., Cook, E. R., Lall, U., Devineni, N., Seager, R., Eggleston, K., and Vranes, K. P.: Is an Epic Pluvial Masking the 15 Water Insecurity of the Greater New York City Region?*, *Journal of Climate*, 26, 1339–1354, 2013.
- Pederson, N., Dyer, J. M., McEwan, R. W., Hessler, A. E., Mock, C. J., Orwig, D. A., Rieder, H. E., and Cook, B. I.: The legacy of episodic climatic events in shaping temperate, broadleaf forests, *Ecological Monographs*, 84, 599–620, 2014.
- Pederson, N., D’Amato, A. W., Dyer, J. M., Foster, D. R., Goldblum, D., Hart, J. L., Hessler, A. E., Iverson, L. R., Jackson, S. T., Martin-Benito, D., McCarthy, B. C., McEwan, R. W., Mladenoff, D. J., Parker, A. J., Shuman, B., and Williams, J. W.: Climate remains an important 20 driver of post-European vegetation change in the eastern United States, *Global Change Biology*, 21, 2105–2110, 2015.
- Peteet, D. M.: Modern pollen rain and vegetational history of the Malaspina Glacier District, Alaska, *Quaternary Research*, 25, 100–120, 1986.
- Peterson, T. C., Heim Jr, R. R., Hirsch, R., Kaiser, D. P., Brooks, H., Diffenbaugh, N. S., Dole, R. M., Giovannettone, J. P., Guirguis, K., Karl, T. R., et al.: Monitoring and understanding changes in heat waves, cold waves, floods, and droughts in the United States: state of 25 knowledge, *Bulletin of the American Meteorological Society*, 94, 821–834, 2013.
- Pitcher, A., Hopmans, E. C., Mosier, A. C., Park, S.-J., Rhee, S.-K., Francis, C. A., Schouten, S., and Damsté, J. S. S.: Core and intact polar glycerol dibiphytanyl glycerol tetraether lipids of ammonia-oxidizing archaea enriched from marine and estuarine sediments, *Applied and Environmental Microbiology*, 77, 3468–3477, 2011.
- Plank, C. and Shuman, B.: Drought-driven changes in lake areas and their effects on the surface energy balance of Minnesota’s lake-dotted 30 landscape, *Journal of Climate*, 22, 4055–4065, 2009.
- Powers, L. A., Werne, J. P., Johnson, T. C., Hopmans, E. C., Damsté, J. S. S., and Schouten, S.: Crenarchaeotal membrane lipids in lake sediments: A new paleotemperature proxy for continental paleoclimate reconstruction?, *Geology*, 32, 613–616, 2004.
- Prahl, F. and Wakeham, S.: Calibration of unsaturation patterns in long-chain ketone compositions for palaeotemperature assessment, 1987.
- Prentice, C. I., Bartlein, P. J., and Webb III, T.: Vegetation and climate change in eastern North America since the Last Glacial Maximum, 35 *Ecology*, 72, 2038–2056, 1991.
- Pribyl, P. and Shuman, B. N.: A computational approach to Quaternary lake-level reconstruction applied in the central Rocky Mountains, Wyoming, USA, *Quaternary Research*, 82, 249–259, 2014.

- Primack, D., Imbres, C., Primack, R., Miller-Rushing, A., and Del Tredici, P.: Herbarium specimens demonstrate earlier flowering times in response to warming in Boston, *American Journal of Botany*, 91, 1260–1264, 2004.
- Ravelo, A. C. and Hillaire-Marcel, C.: Chapter Eighteen the use of oxygen and carbon isotopes of foraminifera in Paleoceanography, *Developments in Marine Geology*, 1, 735–764, 2007.
- 5 Reid, C.: *The origin of the British flora*, Dulau & Company, 1899.
- Rühland, K. M., Paterson, A. M., and Smol, J. P.: Lake diatom responses to warming: reviewing the evidence, *Journal of Paleolimnology*, 54, 1–35, 2015.
- Sachs, J. P.: Cooling of Northwest Atlantic slope waters during the Holocene, *Geophysical Research Letters*, 34, 2007.
- Sachse, D., Radke, J., and Gleixner, G.: Hydrogen isotope ratios of recent lacustrine sedimentary n-alkanes record modern climate variability, *Geochimica et Cosmochimica Acta*, 68, 4877–4889, 2004.
- 10 Sachse, D., Billault, I., Bowen, G. J., Chikaraishi, Y., Dawson, T. E., Feakins, S. J., Freeman, K. H., Magill, C. R., McInerney, F. A., van der Meer, M. T. J., Polissar, P., Robins, R. J., Sachs, J. P., Schmidt, H.-L., Sessions, A. L., White, J. W. C., West, J. B., and Kahmen, A.: Molecular paleohydrology: Interpreting the hydrogen-isotopic composition of lipid biomarkers from photosynthesizing organisms, *Annual Review of Earth and Planetary Sciences*, 40, 221–249, 2012.
- 15 Saros, J. and Anderson, N.: The ecology of the planktonic diatom *Cyclotella* and its implications for global environmental change studies, *Biological Reviews*, 90, 522–541, 2015.
- Saros, J. E., Stone, J. R., Pederson, G. T., Slemmons, K. E., Spanbauer, T., Schliep, A., Cahl, D., Williamson, C. E., and Engstrom, D. R.: Climate-induced changes in lake ecosystem structure inferred from coupled neo-and paleoecological approaches, *Ecology*, 93, 2155–2164, 2012.
- 20 Schouten, S., Hopmans, E. C., Schefuß, E., and Damste, J. S. S.: Distributional variations in marine crenarchaeotal membrane lipids: a new tool for reconstructing ancient sea water temperatures?, *Earth and Planetary Science Letters*, 204, 265–274, 2002.
- Schouten, S., Hopmans, E. C., and Damsté, J. S. S.: The organic geochemistry of glycerol dialkyl glycerol tetraether lipids: a review, *Organic geochemistry*, 54, 19–61, 2013.
- Shuman, B. and Donnelly, J. P.: The influence of seasonal precipitation and temperature regimes on lake levels in the northeastern United States during the Holocene, *Quaternary Research*, 65, 44–56, 2006.
- 25 Shuman, B. and Marsicek, J.: The structure of Holocene climate change in mid-latitude North America, *Quaternary Science Reviews*, 141, 38–51, 2016.
- Shuman, B., Webb III, T., Bartlein, P. J., and Williams, J. W.: The anatomy of a climatic oscillation: Vegetation change in eastern North America during the Younger Dryas chronozone, *Quaternary Science Reviews*, 21, 1777–1791, 2002.
- 30 Shuman, B., Newby, P., Huang, Y., and Webb, T.: Evidence for the close climatic control of New England vegetation history, *Ecology*, 85, 1297–1310, 2004.
- Shuman, B. N., Newby, P., and Donnelly, J. P.: Abrupt climate change as an important agent of ecological change in the Northeast US throughout the past 15,000 years, *Quaternary Science Reviews*, 28, 1693–1709, 2009.
- Smith, A. J., Donovan, J. J., Ito, E., Engstrom, D. R., and Panek, V. A.: Climate-driven hydrologic transients in lake sediment records: multiproxy record of mid-Holocene drought, *Quaternary Science Reviews*, 21, 625–646, 2002.
- 35 Solomon, A. and T. Webb, I.: Computer-aided reconstruction of late-Quaternary landscape dynamics. *Annual Review of Ecology and Systematics*, 16, 63–84, 1985.
- Speer, J. H.: *Fundamentals of tree-ring research*, University of Arizona Press, 2010.

- Stahle, D. W. and Hehr, J. G.: Dendroclimatic relationships of post oak across a precipitation gradient in the southcentral United States, *Annals of the Association of American Geographers*, 74, 561–573, 1984.
- Stahle, D. W., Cleaveland, M. K., Blanton, D. B., Therrell, M. D., and Gay, D. A.: The lost colony and Jamestown droughts, *Science*, 280, 564–567, 1998.
- 5 Stahle, D. W., Fye, F. K., Cook, E. R., and Griffin, R. D.: Tree-ring reconstructed megadroughts over North America since AD 1300, *Climatic Change*, 83, 133–149, 2007.
- Steinman, B. A. and Abbott, M. B.: Isotopic and hydrologic responses of small, closed lakes to climate variability: Hydroclimate reconstructions from lake sediment oxygen isotope records and mass balance models, *Geochimica et Cosmochimica Acta*, 105, 342–359, 2013.
- Swain, A. M.: Environmental Changes during the Past 2000 Years in North-Central Wisconsin: Analysis of Pollen, Charcoal, and Seeds from
10 Varved Lake Sediments, *Quaternary Research*, 10, 55–68, 1978.
- Swindles, G. T., Morris, P. J., Baird, A. J., Blaauw, M., and Plunkett, G.: Ecohydrological feedbacks confound peat-based climate reconstructions, *Geophysical Research Letters*, 39, 2012.
- Telford, R. and Birks, H.: Evaluation of transfer functions in spatially structured environments, *Quaternary Science Reviews*, 28, 1309–1316, 2009.
- 15 Therrell, M. D. and Bialecki, M. B.: A multi-century tree-ring record of spring flooding on the Mississippi River, *Journal of Hydrology*, 529, 490–498, 2015.
- Tingley, M. and Huybers, P.: A Bayesian Algorithm for Reconstructing Climate Anomalies in Space and Time, *Journal of Climate*, 2009.
- Tingley, M. P., Craigmile, P. F., Haran, M., Li, B., Mannshardt, E., and Rajaratnam, B.: Piecing together the past: statistical insights into paleoclimatic reconstructions, *Quaternary Science Reviews*, 35, 1–22, 2012.
- 20 Tipple, B. J., Berke, M. A., Doman, C. E., Khachatryan, S., and Ehleringer, J. R.: Leaf-wax n-alkanes record the plant–water environment at leaf flush, *Proceedings of the National Academy of Sciences*, 110, 2659–2664, 2013.
- Tipton, J., Hooten, M., Pederson, N., Tingley, M., and Bishop, D.: Reconstruction of late Holocene climate based on tree growth and mechanistic hierarchical models, *Environmetrics*, 27, 42–54, 2016.
- Trouet, V., Diaz, H. F., Wahl, E. R., Viau, A. E., Graham, R., Graham, N., and Cook, E. R.: A 1500-year reconstruction of annual mean
25 temperature for temperate North America on decadal-to-multidecadal time scales, *Environmental Research Letters*, 8, 024 008, 2013.
- Trouet, V., Harley, G. L., and Domínguez-Delmás, M.: Shipwreck rates reveal Caribbean tropical cyclone response to past radiative forcing, *Proceedings of the National Academy of Sciences*, p. 201519566, 2016.
- Umbanhowar, C. E.: Interaction of fire, climate and vegetation change at a large landscape scale in the Big Woods of Minnesota, USA, *The Holocene*, 14, 661–676, 2004.
- 30 Viau, A. E., Gajewski, K., Sawada, M. C., and Fines, P.: Millennial-scale temperature variations in North America during the Holocene, *Journal of Geophysical Research*, 111, D09 102, 2006.
- Viau, A. E., Ladd, M., and Gajewski, K.: The climate of North America during the past 2000 years reconstructed from pollen data, *Global and Planetary Change*, 84–85, 75–83, 2012.
- Wahl, E. R., Diaz, H. F., and Ohlwein, C.: A pollen-based reconstruction of summer temperature in central North America and implications
35 for circulation patterns during medieval times, *Global and Planetary Change*, 84, 66–74, 2012.
- Webb, T. I.: Corresponding patterns of pollen and vegetation in lower Michigan: A comparison of quantitative data, *Ecology*, 55, 17–28, 1974.

Webb, T. I., Bartlein, P. J., and Kutzbach, J. E.: Climatic change in eastern North America during the past 18,000 years : Comparisons of pollen data with model results, pp. 447–462, Geological Society of America, Boulder, CO, 1987.

Webb, R. S., Anderson, K. H., and T. Webb, I.: Pollen response-surface estimates of late-Quaternary changes in the moisture balance of the northeastern United States, *Quaternary Research*, 40, 213–227, 1993.

5 Webb, T. I., Anderson, K., Bartlein, P., and Webb, R.: Late Quaternary climate change in eastern North America: a comparison of pollen-derived estimates with climate model results, *Quaternary Science Reviews*, 17, 587–606, 1998.

Webster, K., Creed, I., Nicholas, N., and Van Miegroet, H.: Exploring interactions between pollutant emissions and climatic variability in growth of red spruce in the Great Smoky Mountains National Park, *Water, Air, and Soil Pollution*, 159, 225–248, 2004.

Weider, K. and Boutt, D. F.: Heterogeneous water table response to climate revealed by 60 years of ground water data, *Geophysical Research Letters*, 37, 2010.

10 Whitmore, J., Gajewski, K., Sawada, M., Williams, J., Shuman, B., Bartlein, P., Minckley, T., Viau, A., Webb, T., Shafer, S., et al.: Modern pollen data from North America and Greenland for multi-scale paleoenvironmental applications, *Quaternary Science Reviews*, 24, 1828–1848, 2005.

Wigdahl-Perry, C. R., Saros, J. E., Schmitz, J., Calcote, R., Rusak, J., Anderson, D., and Hotchkiss, S.: Response of temperate lakes to drought: a paleolimnological perspective on the landscape position concept using diatom-based reconstructions, *Journal of Paleolimnology*, 55, 339–356, 2016.

15 Williams, J. and Shuman, B.: Obtaining accurate and precise environmental reconstructions from the modern analog technique and North American surface pollen dataset, *Quaternary Science Reviews*, 27, 669–687, 2008.

Williams, J., Shuman, B., and Bartlein, P.: Rapid responses of the prairie-forest ecotone to early Holocene aridity in mid-continental North America, *Global and Planetary Change*, 66, 195–207, 2009.

20 Williams, J. W., Webb, T., Shuman, B. N., and Bartlein, P. J.: Do low CO₂ concentrations affect pollen-based reconstructions of LGM climates? A response to 'Physiological significance of low atmospheric CO₂ for plant-climate interactions' by Cowling and Sykes (vol 53, pg 402, 2000), *Quaternary Research*, 54, 161–161, 2000.

Williams, J. W., Post, D. M., Cwynar, L. C., Lotter, A. F., and Levesque, A. J.: Rapid and widespread vegetation responses to past climate change in the North Atlantic region, *Geology*, 30, 971–974, 2002.

25 Williams, J. W., Shuman, B. N., Webb, T., Bartlein, P. J., and Leduc, P. L.: Late-Quaternary vegetation dynamics in North America: Scaling from taxa to biomes, *Ecological Monographs*, 74, 309–334, 2004.

Williams, J. W., Shuman, B., Bartlein, P. J., Whitmore, J., Gajewski, K., Sawada, M., Minckley, T., Shafer, S., Viau, A. E., T. Webb, I., Anderson, P. M., Brubaker, L. B., Whitlock, C., and Davis, O. K.: An Atlas of Pollen-Vegetation-Climate Relationships for the United States and Canada, American Association of Stratigraphic Palynologists Foundation, Dallas, TX, 2006.

30 Williams, J. W., Tarasov, P., Brewer, S., and Notaro, M.: Late Quaternary variations in tree cover at the northern forest-tundra ecotone, *Journal of Geophysical Research: Biogeosciences*, 116, 2011.


Winter, T. C.: Relation of streams, lakes, and wetlands to groundwater flow systems, *Hydrogeology Journal*, 7, 28–45, 1999.

Woodward, F. I.: *Climate and Plant Distribution*, Cambridge University Press, Cambridge, 1987.

35 Wu, H., Guiot, J., Brewer, S., and Guo, Z.: Climatic changes in Eurasia and Africa at the last glacial maximum and mid-Holocene: reconstruction from pollen data using inverse vegetation modelling, *Climate Dynamics*, 29, 211–229, 2007.

ID	Site Name	Type	Lat.	Long.	Avg. yrs/sample	Citation
----	-----------	------	------	-------	-----------------	----------

1.	Great Heath Bog, ME	Testate amoeba	44.70	-67.81	11 yr	Clifford & Booth, 2013
2.	Irwin Smith Bog, MI	Testate amoeba	45.03	-83.62	49 yr	Booth et al. 2012
3.	Minden Bog, MI	Testate amoeba	43.62	-82.84	16 yr	Booth et al. 2003
4.	Pinhook Bog, IN	Testate amoeba	41.61	-86.85	21 yr	Booth et al. 2012
5.	Saco Bog, ME	Testate amoeba	43.55	-70.46	5 yr	Clifford & Booth 2013
6.	Sidney Bog, ME	Testate amoeba	44.39	-69.78	18 yr	Clifford & Booth 2013
7.	South Rhody Bog, MI	Testate amoeba	46.56	-86.07	27 yr	Booth et al. 2012
8.	White Lake, NJ	IRM	41.00	-74.80	98 yr	Li et al. 2007
9.	Great Heath Bog, ME	SVR	44.70	-67.81	14 yr	Nichols & Huang 2012
10.	Davis Pond, MA	Lake level	42.14	-73.40	52 yr	Newby et al. 2014
11.	Deep Pond, MA	Lake level	41.56	-70.64	51 yr	Marsicek et al. 2013
12.	New Long Pond, MA	Lake level	41.85	-70.71	Unknown	Newby et al. 2014
13.	Mathews Pond, ME	Lake level	43.27	-70.86	n/a	Dieffenbacher-Krall 2005
14.	Whitehead Lake, ME	Lake level	46.46	-67.86	n/a	Dieffenbacher-Krall 2005
15.	Green Lake, NY	Varves	43.05	-75.97	1 yr	Hubeny et al. 2014
16.	Pettaquamscutt R. Estuary, RI	Varves	41.50	-71.45	1 yr	Hubeny et al. 2014
17.	Emerald Basin	Alkenones	45.89	-62.80	39 yr	Keigwin et al. 2011
18.	Scotian Margin	Alkenones	44.00	-63.00	72 yr	Sachs et al. 2007

Table 1: Site ID, location, data type, sample resolution for past 3000 years, and citation for sites used in this study. IRM is Isothermal  anent Magnetization and SVR is Sphagnum/Vascular ratio. The sample resolution for New Long Pond could not be obtained as raw data were not provided for the study. Mathews Pond and Whitehead Lake are not provided because a continuous age model was not constructed and trends are therefore approximations only.

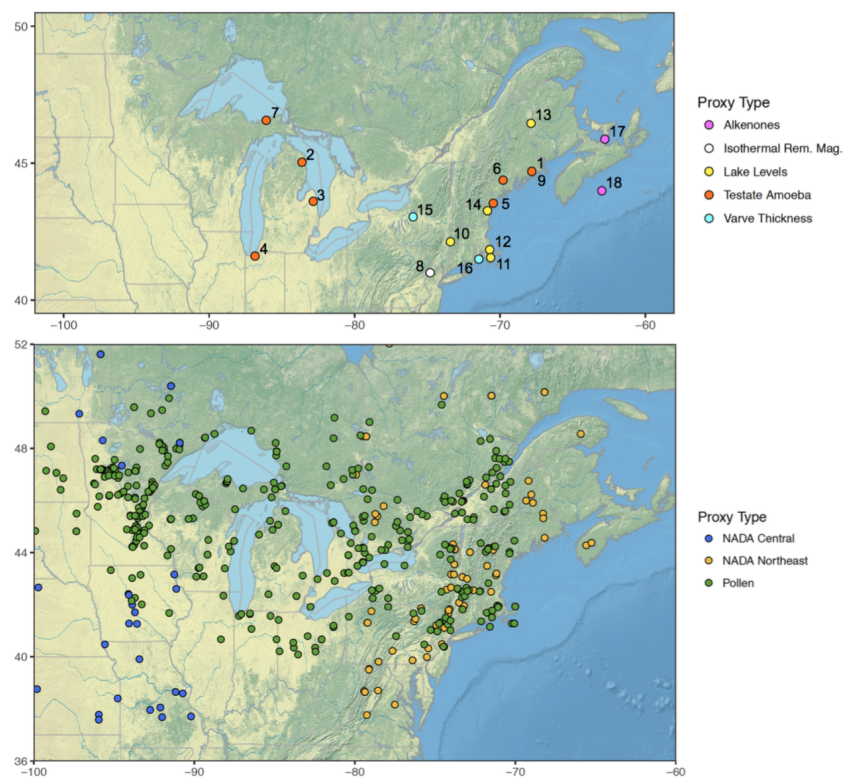


Figure 1. Locations of sites (see Table 1 for upper panel site index) with paleoclimate data used in this paper and that span at least two centuries, reconstructed from various sources in the northeastern US. Isothermal Rem. Mag. is Isothermal Remanent Magnetization; NADA is the North American Drought Atlas.

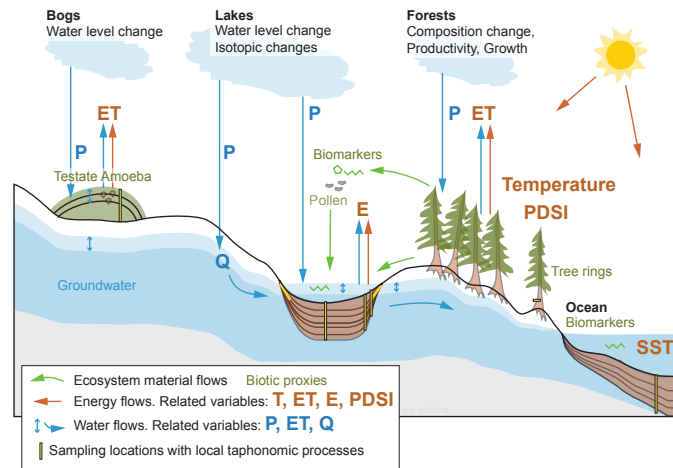


Figure 2. Natural archives such as sediments, bogs, and trees rings capture signatures of energy, water, and other material flows between the biosphere, surface hydrosphere, and atmosphere. Paleoclimate proxies are the various biological, geochemical, and physical characteristics of these archives that are influenced by climatic variations. Ombrotrophic bogs are perched above the water table and thus they and their testate amoebae assemblages are not affected by ground water flows (Q). Rather, the composition of testate amoebae assemblages within bogs is governed by the differential sensitivity of testate amoebae species to the height of the water table within the bog, governed by the balance between precipitation (P) and evapotranspiration (ET), which is in turn affected by temperature (T). Lake level records and diatom-based records of past salinity integrate decadal to century-scale T, P, and evaporation (E) variations. Tree ring growth responds to seasonal T and P variations, and are often used to reconstruct the Palmer Drought Severity Index (PDSI). Biomarker, isotopic, pollen, and macrofossil signals recorded in bog and lake archives capture decadal or longer-term processes due to processes that affect particle transportation and deposition. The proxies found in marine archives are mostly produced by marine organisms (e.g. biomarkers) but some such as pollen are terrestrially sourced.

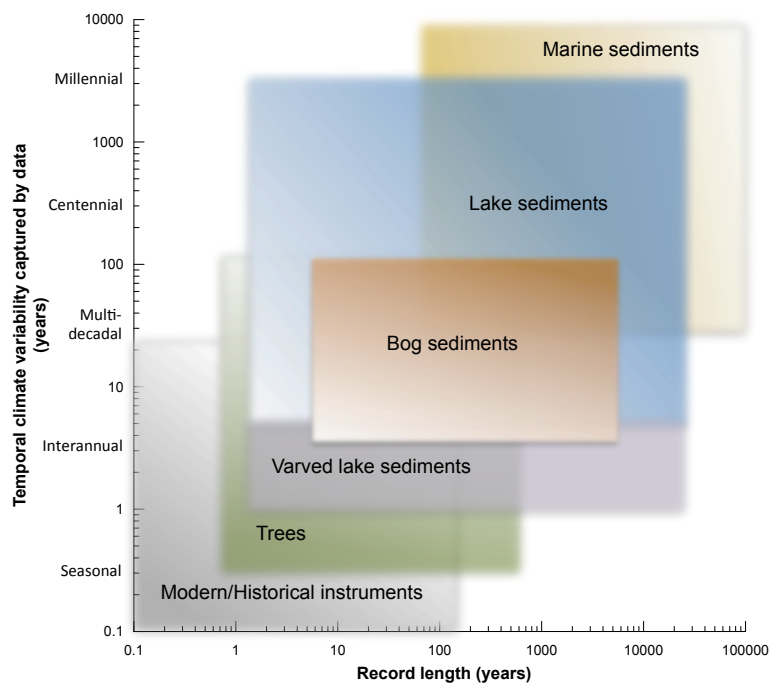


Figure 3. Temporal climate variability captured and typical record lengths characteristic of paleoclimate data available in the NE US.

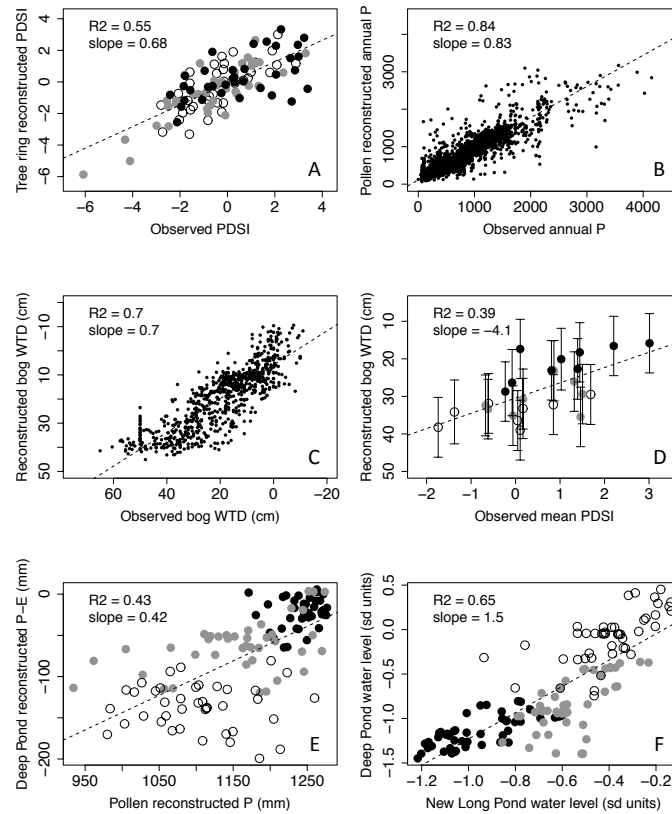


Figure 4. Calibration, internal validation, and multi-proxy comparison data for tree rings, pollen, lake levels, and bogs. (A) Instrumental (observed) versus reconstructed New York PDSI for 1895-2000 from tree rings; (B) observed versus reconstructed annual precipitation from pollen data (Marsicek et al., 2013); (C) observed versus reconstructed water table depth (WTD) from testate amoebae across North America (Booth, 2008); (D) Hole Bog, Minnesota WTD versus instrumental PDSI for 1895-2003 (which uses the mean PDSI for each of the sample intervals) (Booth, 2008); (E) Deep Pond lake-level derived P-E reconstruction versus the mean annual precipitation reconstruction based on the mean of multiple records in the region (Newby et al., 2014); (F) New Long versus Deep Pond water elevations from southeastern MA for the past 7000 yrs (Newby et al., 2014). Comparisons in E and F include reconstruction error as well as temporal error because the two datasets in each case come from different sets of cores. For all plots, black-filled dots are the oldest one third, gray are the middle third, and unfilled are the youngest third. Note that panels B and D have declining axes.

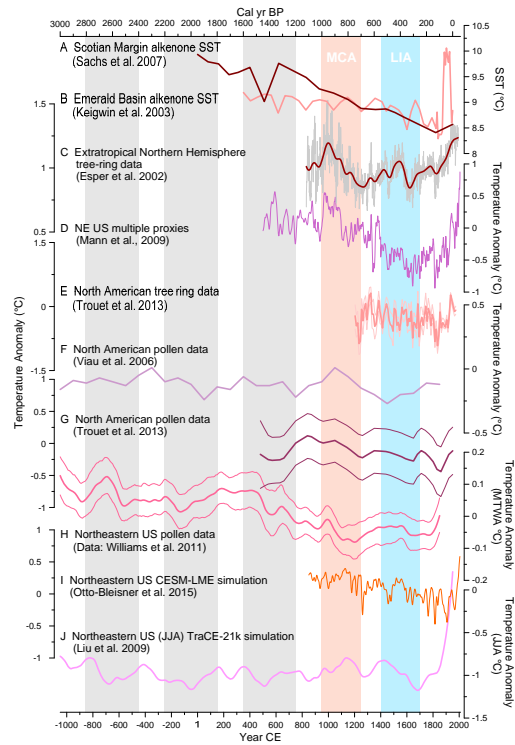


Figure 5. Temperature reconstructions for the last 3000 years for the NE US and adjacent regions, sourced from diverse paleoclimatic proxies and archives. A) Sea Surface Temperature (SST) reconstructions based on U^{K}_{37} in marine sediments (Sachs, 2007); B) SST based on alkenone unsaturation in marine sediments (Keigwin et al., 2003); C) Tree-ring widths from the northern hemisphere extratropics (Esper et al., 2002); D) Northeast US grid cells areally averaged (from 37.5 to 47.5 N latitude and 67.5 to 77.5 E longitude) from multiple proxies (Mann et al., 2009); E) Tree-ring widths from temperate North America (Trouet et al., 2013); F) North American pollen data (Viau et al., 2006); G) North American pollen data (Trouet et al., 2013); H) Northeastern pollen data (Williams et al., 2011); I) North-central (39 to 46 N latitude and 87.5 to 97.5 E longitude; yellow) and Northeast (39 to 46 N latitude and 67.5 to 77.5 E longitude; orange) simulations from the Community Earth System Model-Last Millennium Ensemble (Otto-Blesner et al., 2015); J) North-central (yellow) and Northeastern (orange) temperature simulations from the Community Climate System Model version 3 SynTrace experiment (Liu et al., 2009). Vertical gray bands are only provided as a visual aid to identify the timing of features in the records. Pink and blue vertical bars mark the MCA and LIA intervals.

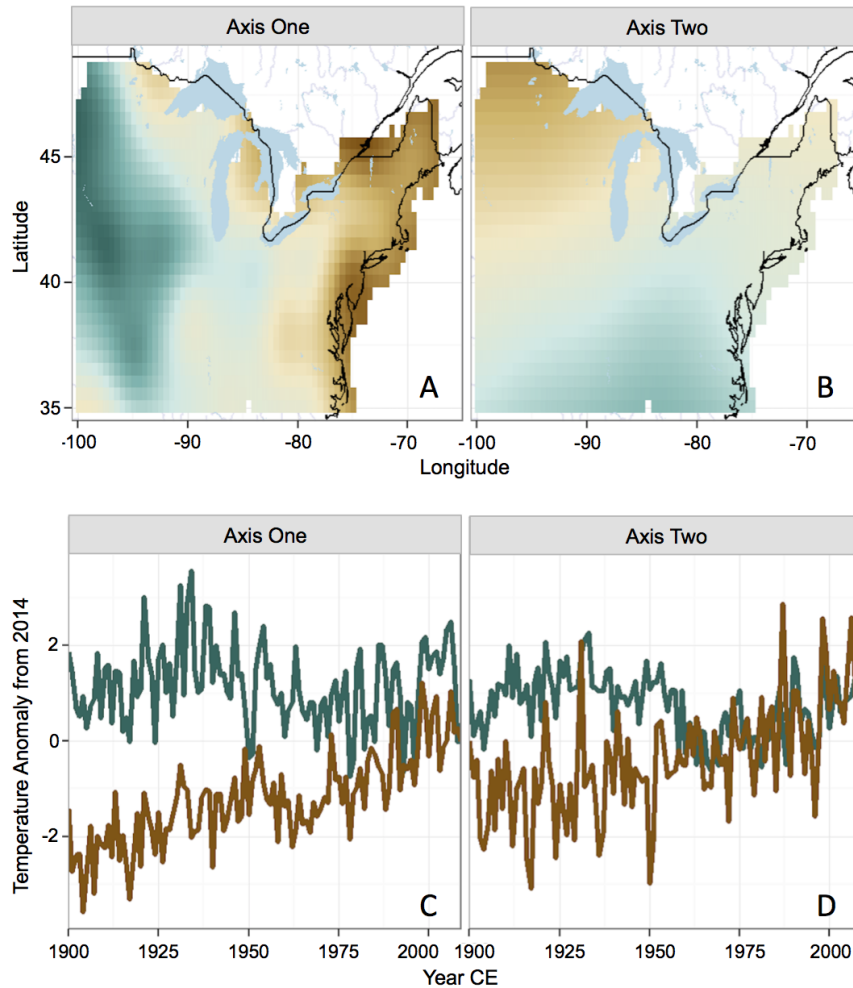


Figure 6. Broad-scale spatiotemporal patterns in the historical mean annual temperature anomalies from 1895 - 2010 from an empirical orthogonal function (EOF) analysis of data from the Global Historical Climatological Network for the NE US. A) First EOF (16% of the variance) showing a strong west-east (longitudinal) gradient in temperature changes during the last century, with the west (northwest especially) showing an early- to mid-century maximum and high variability (green line in C), and the Atlantic margin showing strong warming throughout the century (brown line in C); B) Second EOF (accounting for 8% of the variance) indicating warming in the northwest but with higher variability (brown line in D) than along the Atlantic seaboard (brown line in C).

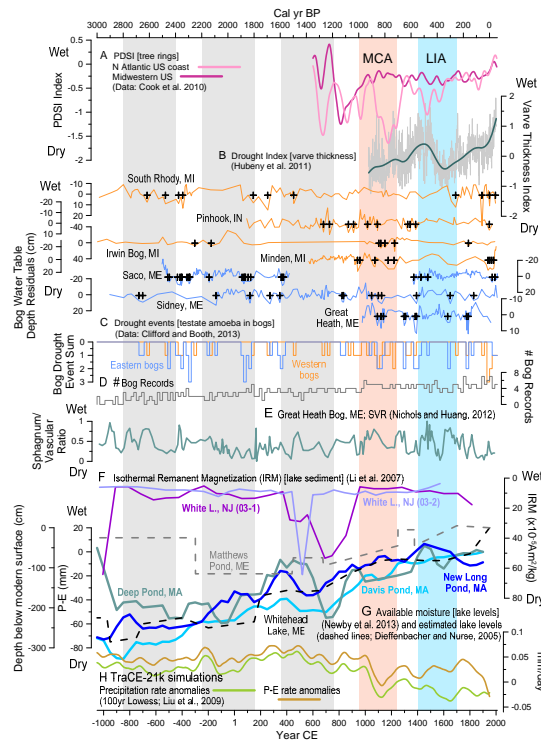


Figure 7. Hydroclimatic reconstructions for the last 3000 years for the NE US and adjacent regions, sourced from diverse paleoclimatic proxies and archives. A) Tree-ring based reconstructions of PDSI (Cook et al., 2010); B) Composite index of two varve thickness records from Green Lake, New York, and the Pettaquamscutt River Estuary, Rhode Island (Hubeny et al., 2011); C) Drought events and event summary based on water table reconstructions from testate amoeba in western kettle-hole peatlands (Pinhook and South Rhody), western bogs (Irwin Smith and Minden), and eastern bogs (Sidney, Saco, and Great Heath) (Booth and Jackson, 2003; Booth et al., 2006, 2012; Clifford and Booth, 2013); D) ratio of *Sphagnum* to vascular plants from the Great Heath bog, ME (Nichols and Huang, 2012); E) drought indicator based on Isothermal Remanent Magnetization at White Lake, NJ (Li et al., 2007); and F) lake level reconstructions from Deep Pond, Davis Lake, New Long Pond (Marsicek et al., 2013; Newby et al., 2014), and lake-level change estimates from Matthews Pond and Whitehead Lake, ME (Dieffenbacher-Krall and Nurse, 2005). Vertical gray bands are only provided as a visual aid to identify the timing of features in the records. Pink and blue vertical bars mark the well-known MCA and LIA intervals.

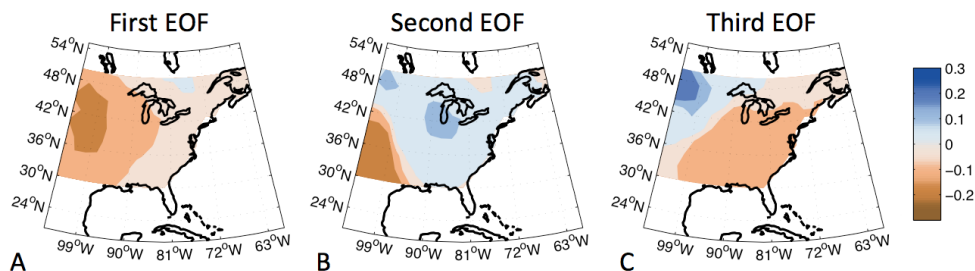


Figure 8. NADA spatial structure and signals. First three EOFs for the 2.5°NADA. Calculated for 1700-2005. Variance explained: 13%, 9%, and 8%. Colors indicate areas with opposite loading patterns for relatively wet versus dry conditions.

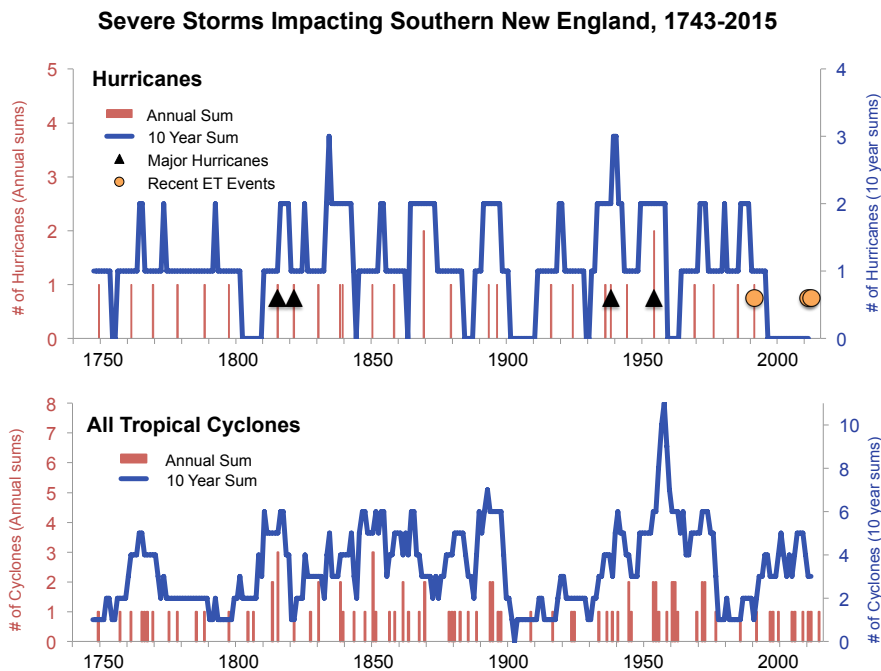


Figure 9. Annual number and decadal sums for a) reconstructed hurricanes and b) tropical cyclones and hurricanes in southern New England from 1743 to 2015 CE. Major hurricanes (i.e. Saffir Simpson Category 3, 4 or 5) are shown as triangles. Selected recent extra tropical storms (the Perfect Storm in 1991, the Halloween Nor'easter of 2011, and post-hurricane Sandy in 2012) are shown as circles. Methodology for the storm reconstructions follow those outlined in Mock (2008).