

Last Glacial Maximum and Deglacial Abyssal Seawater Oxygen Isotopic Ratios

Carl Wunsch¹

^{1,*}Department of Earth and Planetary Sciences, Harvard University

*Also at Department of Earth, Atmospheric and Planetary Sciences, MIT

Correspondence to: Carl Wunsch (cwunsch@fas.harvard.edu)

Abstract. An earlier analysis of pore water salinity (chlorinity) in two deep-sea cores, using terminal constraint methods of control theory, concluded that although a salinity amplification in the abyss was possible during the LGM, it was not required by the data. Here the same methodology is applied to $\delta^{18}\text{O}_w$ in the upper 100m of four deep-sea cores. An ice volume amplification to the isotopic ratio is, again, consistent with the data but not required by it. In particular, results are very sensitive, with conventional diffusion values, to the assumed initial conditions at -100 ky and a long list of noise (uncertainty) assumptions. If the calcite values of $\delta^{18}\text{O}$ are fully reliable, then published enriched values of the ratio in sea water are necessary to preclude sub-freezing temperatures, but the sea water $\delta^{18}\text{O}$ in pore fluids does not independently require the conclusion.

1 Introduction

Based upon the work of McDuff (1985), Schrag and de Paolo (1993), Schrag et al. (2002), Adkins and Schrag (2001, 2003), Insua et al. (2014), and several others, on the properties of pore-waters in abyssal cores, inferences have been made about the salinity and temperature of the regional and global abyssal oceans during the last glacial maximum (LGM). A summary of the central conclusion (e.g. Adkins et al., 2002) would be that the deep ocean was almost everywhere near freezing temperatures, and with an abyssal salinity much above the global volume average, particularly in the Southern Ocean.

Those inferences have become a part of the ongoing discussion of climate physics, including the whereabouts of global carbon during the LGM, and are a standard against which models are being tested: e.g., Otto-Bliesner et al. (2006), Intergovernmental Panel on Climate Change (2013), Kobayashi et al. (2015). Recently Miller (2014), Miller et al. (2015) have challenged this interpretation showing, using a Monte Carlo method, that the uncertainties of the inferences were too great to assert that the LGM abyssal stratification could be determined with useful accuracy.

Their conclusion was tested by Wunsch (2015; hereafter W15) using salinity (chlorinity) data obtained from the pore-waters of two of the cores used by Adkins and Schrag (2003), Miller (2014), and Miller et al. (2015; hereafter M15). In contrast to the latter authors, the analysis was carried out in the physically more direct context of standard control theory: pore fluid data were treated as a “terminal constraint” on the time-evolving pore-water properties.¹ Using highly optimistic assumptions (a

¹Miller et al. (2015) used a Markov Chain-Monte Carlo (MCMC) approach. Whether this stochastic method is intuitively more accessible than the one used here is a matter of taste.

known one-dimensional advection-diffusion model with perfect parameters, known initial conditions, etc.) the uncertainties in the estimated abyssal salinity through time supported the M15 inference. In general, the very high local values of abyssal salinity, S , much above the LGM volumetric mean, were possible within the uncertainties of the salinity (chlorinity) data and the model, but were not required by the data and model.

5 The purpose of this present paper is to extend the W15 salinity analysis to the pore-water measurements of the oxygen isotope ratio, $\delta^{18}\text{O}_w$; see Schrag and dePaolo (1993), Adkins and Schrag (2001, 2003), Schrag et al. (2002), M15. The oxygen isotope tracer is of particular importance for the interpretation of the calcite ratio of $\delta^{18}\text{O}_c$ in foraminifera, to separate the ice volume effect (controlling $\delta^{18}\text{O}_w$) from the temperature signature in $\delta^{18}\text{O}_c$ during the last glacial maximum. As discussed by these previous authors, both colder in situ water temperatures, and increases in global ice volume lead to an increase in
10 $\delta^{18}\text{O}_c$ (cf. Bradley, 1999, p. 199+). Unless the ice volume contribution in $\delta^{18}\text{O}_w$ is sufficiently large, some $\delta^{18}\text{O}_c$ values imply sub-freezing deep ocean temperatures. Schrag et al. (2002) discuss the limits on the required global volumetric mean increase in $\delta^{18}\text{O}_w$, with a lower bound (Duplessy, 1978; Bradley, 1999) of 1.1 o/oo to prevent below-freezing temperatures as inferred from $\delta^{18}\text{O}_c$. A maximum change of 1.3 o/oo is found if the entirety is attributed to a sea level-drop of about 120m at the LGM (Fairbanks, 1989) with no associated temperature change. But as Schrag et al. (2002) and others emphasized, no reason
15 exists to believe that any kind of spatially uniform changes occurred during the glacial and deglacial intervals. The temperature change estimate leans on finding the small difference between two noisy numbers and involves the accuracy of the average global ice sheet $\delta^{18}\text{O}$ during the LGM, the accuracy of the relationship between $\delta^{18}\text{O}_c$ and water temperature, the accuracy of the isotopic measure itself, and non-negligible salinity effects, among other problems. Note for example, that near-surface Mg/Ca ocean temperatures often differ significantly from the oxygen isotope values (e.g., Margo Project Members (2009). If
20 the extreme $\delta^{18}\text{O}_c$ values are interpreted literally, the ice volume contribution must have been high enough to prevent freezing. The question here is whether the $\delta^{18}\text{O}_w$ data by themselves support that hypothesis.

As in W15, the focus here is on the upper 100m of the cores, where the observed $\delta^{18}\text{O}_w$ has its maximum, instead of aiming for an overall analysis from the full pore-water data depth range. Again the emphasis is on understanding the extent to which the $\delta^{18}\text{O}_w$, by themselves, imply large ambient values in the abyssal waters.

25 The general procedure here for both salinity and $\delta^{18}\text{O}_w$ is identical to that in W15 which has a broader discussion. That is, any tracer $c(z, t)$ in the pore-waters is supposed to satisfy a one-dimensional advection-diffusion equation,

$$\frac{\partial c}{\partial t} + w(z, t) \frac{\partial c}{\partial z} + \frac{\partial}{\partial z} \left(k(z, t) \frac{\partial c}{\partial z} \right) = \quad (1a)$$

$$\frac{\partial c}{\partial t} + \left(w(z, t) + \frac{\partial k(z, t)}{\partial z} \right) \frac{\partial c}{\partial z} + k(z, t) \frac{\partial^2 c}{\partial z^2} = 0. \quad (1b)$$

30 Here z is positive upwards from the base of the core data, time runs forward, w is an advective flow relative to the surrounding solid, but porous, medium and k is a vertical diffusion coefficient. No diagenetic reactive processes are included (see e.g., Berner, 1980; Schrag and de Paolo, 1993). $\partial k / \partial z$, if non-zero, can be thought of as an effective velocity, w^* , but it competes with the effects of variable k in the last term of Eq. 1b). Derivation of this equation is not straightforward, and involves numerous assumptions discussed by Berner (1980), Boudreau (1997), Huettel and Webster (2001), Bruna and Chapman (2015),

Voemans et al. (2016) and others. Because this equation has been the model used by previous workers, it is adopted here as a black-box framework for discussion of the resulting uncertainties in the pore-water inferences with little discussion of its probable violations. $\delta^{18}\text{O}_w$ is a *ratio* of concentrations, but the denominator (the concentration $[^{16}\text{O}]$) is treated as invariant so that a standard advection-diffusion equation is still appropriate.

5 If k, w are known, Eq. (1) is a conventional parabolic partial differential equation in z, t whose textbook solution involves specifying: (a) the initial conditions, (b) the boundary condition at $z = h$ (the fluid-solid interface) and (c) the boundary condition at $z = 0$, the base of the pore-water data. As discussed by Wunsch (2006), problems involving observations almost never coincide with the well-posed situations described in most differential equations textbooks, and one must specifically ask “what is known, and what has to be determined?” In the present situation with real core data, apart from the model, information is
 10 available only at the time when the core was obtained, $t = t_f$, and includes $c(z, t_f) = C(z, t_f) \pm \Delta C(z, t_f)$ where $C(z, t_f)$ are the “true” terminal values, and $\Delta C(z, t_f)$ is an estimate of their uncertainty. In many cores, the porosity and tortuosity of the solid phase are also measured at time t_f and are used to infer $k(z, t_f)$, also with some uncertainty (not always stated). The measured values, $C_{term} = c(z, t_f)$, are the “terminal constraint” on the tracer. They represent the values to which the concentration must converge through time—within error bars (here also labelled “uncertainty”).

15 Because the core properties are measured only at time t_f , the initial conditions, $C_0(z)$, are unknown and a plausible guess is required. Two candidates suggest themselves: (1) Relying on the rough quasi-periodicity of Pleistocene ice ages (see e.g., M15), one can set $C_0(z) = c(z, t_f) \pm \Delta C(z, t = 0)$, but where $\Delta C(z, t = 0) \gg \Delta C(z, t = t_f)$ owing to the great uncertainty. Although the nominal initial and terminal profiles are identical, the errors present in each are assumed to be totally unrelated, the former being much greater than the latter. (2) Take the completely agnostic value $C_0(z) = 0 \pm \Delta C(z, t = 0)$, and attempt
 20 to determine the initial conditions from the data. (See Table 1 for the notation.)

What of the boundary condition $C_h(t) = C(z = h, t)$? Determining $C_h(t)$ has been the focus of the existing literature, with inferred values being the estimates of LGM and deglacial abyssal salinities and isotopic ratios and is what led to the general inferences described above. As with all estimation problems, it helps greatly to have a good (accurate) a priori estimate of the true value. As outlined by McDuff (1985) and Adkins and Schrag (2001), plausibly both oceanic salinity and $\delta^{18}\text{O}_w$ would
 25 be controlled largely by ice volume changes, and they and subsequent investigators have usually taken a scaled version of the estimated sea level curve as a sensible starting place. Because sea level curves are sometimes based upon $\delta^{18}\text{O}$ values in cores and which are presumably correlated with $\delta^{18}\text{O}_w$, we follow M15 in using their estimate—one that avoided such data and as shown in Fig. 1, scaled for $\delta^{18}\text{O}_w$. An enrichment at the estimated global ice maximum about -20 ky BP occurs. The curve, which will be used as an a priori estimate, was allowed to range from -0.19 to 1.16 o/oo with a mean value over the last ky of
 30 0.43 o/oo. Let the guessed prior be written as $\tilde{C}_h(t) = C_h(t) \pm \Delta C_h(t)$, where $\Delta C_h(t)$ is another uncertainty estimate.

The bottom boundary condition is problematic. With finite diffusion and/or an upward directed w , structures below the measured pore fluid depth can propagate into the measured domain. A separate or combined calculation would be required for determining those unknown structures, and we again follow previous investigators in using a zero-flux boundary condition at $z = 0$. The problem can easily be reformulated to determine that boundary condition instead of, or in addition to, $C_h(t)$, and
 35 noting that in general, $\partial c(0)/\partial z \neq 0$ in the data.

2 Estimation Structure

Following W15, the problem is written in discrete numerical form using a Dufort-Frankel method (Roache, 1976) with the exception that now k will be treated explicitly as a linear function of z with a factor of two variation, but it makes little quantitative difference to the results; see the Appendix. W15 described three, equivalent, stable methods for solving the resulting terminal constraint estimation problem.² Again, with the goal of finding the most optimistic estimates of uncertainty, w, k are treated here as perfectly known, all data being used to compute the control variable, which is the correction to the guessed a priori $C_h(t)$ and its uncertainty. Here only the so-called Rauch-Tung-Striebel (RTS) smoother algorithm is used, as it produces rigorous uncertainty estimates (rigorous up to the model choice, including the prior uncertainties). With k, w known and time-independent, the problem is a linear one, with the model written in “state-space” form as,

$$10 \quad \mathbf{x}(t + \Delta t) = \mathbf{A}(t)\mathbf{x}(t) + \mathbf{B}(t)\mathbf{q}(t) + \mathbf{\Gamma}(t)\mathbf{u}(t), \quad t = 0, \Delta t, 2\Delta t, \dots, (N - 1)\Delta t, \quad (2)$$

$$t_f = (N - 1)\Delta t$$

\mathbf{A} is the $2M \times 2M$ “state transition” matrix (a function of w, k), $\mathbf{q}(t)$ represents the prescribed boundary conditions and $\mathbf{B} = \mathbf{\Gamma}$ distributes the boundary condition over the requisite grid points.³ Here $\mathbf{q} = q(t)$ is a scalar, and \mathbf{B} is a vector of all zeros except with unity at the top boundary point—the core-ocean interface or,

$$15 \quad \mathbf{B} = \mathbf{\Gamma} = [0, 0, \dots, 0, 0, 1]^T, \quad (3)$$

that is, zero vectors except for the last point. The state vector, and hence the terminal data, has dimension $2M$, where M is the number of vertical gridpoints in z . $\mathbf{u}(t)$ is the “control” and is the adjustment that will be made to $\mathbf{q}(t)$ to render the state as consistent as possible with the terminal data conditions. The state vector is $\mathbf{x}(t) = [c(z, t - \Delta t), c(z, t)]^T$ with discretized vector $0 \leq z \leq L$, in Δz . The numerical scheme requires two time levels in $\mathbf{x}(t)$. In the present special case, matrices $\mathbf{A}, \mathbf{B}, \mathbf{\Gamma}$ are here all taken to be time-independent and perfectly known, and $\mathbf{q}(t) = q(t)$, $\mathbf{u}(t) = u(t)$ are scalars representing the abyssal water $\delta^{18}\text{O}_w$ prior, and adjustment respectively. (Many extensions of this formalism exist, including those for non-linear systems.)

An equation governing the observations, $\mathbf{y}(t)$, is written,

$$\mathbf{E}(t)\mathbf{x}(t) + \mathbf{n}(t) = \mathbf{y}(t), \quad (4)$$

25 where $\mathbf{n}(t)$ is the noise in the observations. In the present special case, $\mathbf{E}(t) = 0$, $t < t_f$, $\mathbf{E}(t_f) = \mathbf{I}_{2M}$ where \mathbf{I} is the identity matrix (that is, observations exist only at the terminal time). \mathbf{R} is the covariance matrix of the error (uncertainty) in the terminal data, and \mathbf{P}_0 is the corresponding values for the initial conditions.

The estimation equations are described more fully in W15. Full specification of the system includes these equations plus all of the a priori estimates of uncertainty in parameters, initial conditions, measurement noise, Etc.

²Anyone interested in the rigorous mathematics of such problems in continuous space and time is urged to consult Lions (1971).

³The notation is that bold lower-case letters indicate column vectors; bold upper-case letters (Latin or Greek) are matrices, and the superscript T means the transpose. Vectors and matrices sometimes reduce to scalars.

2.1 Identification

Standard control theory and statespace methods (e.g., Goodwin and Sin, 1984; Franklin and Powell, 1998; Wunsch, 2006) commonly distinguish between two problems associated with Eqs. (2,4), that of “identification” and “statespace and control estimation.” The identification problem in this case reduces to answering the question: “What values of the parameters w, k are the best ones to use in modelling the data?” The formalism following from Eq. (2) is sufficiently general to include representations of the space-time structure of $k(z, t_f), w(z, t_f)$ —if equations governing their time-space evolution were available. Absent such information, the simplest, but arbitrary and optimistic, assumptions range from assuming constant values in one or both of space and time to, at the opposite extreme, assuming a white-noise structure in both space and time ending with the structures observed at the terminal time in the core. The former assumption under-parameterizes the true variability, and the latter introduces an enormous number of further unknown parameters relative to the available data. Various intermediate assumptions can be made.

Identification must be done, at least in part, before estimation. In the present situation, the identification step is simply assumed to have been properly carried out by previous authors who used one-dimensional structures, various orders of magnitude for w, k , and governing equations. In what follows, the importance of this identification process will be apparent. (The data used for identification should be independent of the data used subsequently for state estimation and control. Otherwise the statistical measures that follow become far more complex.)

2.2 State Estimation and Control

If the identification problem has been solved, producing a useful model (or “plant” in the engineering control literature), available data can be used instead to determine the adjusted boundary condition $\tilde{C}_h(t) = q(t) + \tilde{u}(t)$, and the best estimate of the full state variable $\tilde{\mathbf{x}}(t) \rightarrow [c(\mathbf{z}, t)]$. It was this second problem addressed in W15—in which guesses were made of the most appropriate model and the terminal constraint problem then solved by standard sequential methods (Lagrange multipliers (adjoint), and the Rauch-Tung-Striebel (RTS) smoother). It was argued then, that the uncertainty of the resulting $\tilde{C}_h(t)$ was so great, despite using all of the terminal data to determine it, that little could be said about the abyssal water salinity change during the LGM and the subsequent deglaciation. Using some or all of the same data to *also* determine $k(z, t), w(t)$ could only further *increase* the uncertainty of the estimate $\tilde{u}(t)$. This result was consistent with M15.

2.3 Observability and Controllability

Control methods introduce the concepts of observability and controllability (Wunsch, 2006; Marchal, 2014) as well as a series of related ideas such as “reachability” (see Goodwin and Sin, 1984). Here, “observability” means that the observations are adequate to perfectly reconstruct the initial conditions. “Controllability” implies that the system can be driven from any initial condition to an arbitrary terminal value.

The extent to which the terminal data are determined by the initial conditions is an important issue here. Thus (e.g., Wunsch, 2006, p. 233) with a single observation at the end time, and in the absence of any external disturbance, the observability matrix,

a special case, is

$$\mathbf{O} = \mathbf{I}_{2N} \mathbf{A}^{t_f} = \mathbf{A}^{t_f},$$

and with $C_h(t) = 0$ would, if \mathbf{A}^{t_f} is of full rank, permit exact solution of

$$\mathbf{x}(t_f) = \mathbf{O}\mathbf{x}(0),$$

5 for $\mathbf{x}(0)$. Loss of information about the initial conditions will arise directly from the dissipative nature of diffusion or, if there is a finite negative w , from the sweeping out of information by advection from the region of observation. Using $k = 10^{-10}$ m^2/s , $w = 0$, $\Delta t = 127.3$ y, and $t_f = 786\Delta t$ y, $L = 100$ km and 101 grid points in z , the rank of \mathbf{O} is 24 (\mathbf{A} has rank 100, the number of non-surface-boundary grid points in the vertical). Thus a “range” of 24 structures in the initial conditions can be inferred from the terminal data, and 76 will lie in its null space. With these parameters, the system is not fully observable
10 and the question is whether the null space is of serious concern or not. (Structures in the terminal state null space of \mathbf{O} are not determined by the initial conditions, and might be provided by the control instead. Structures in its range *can* be provided by the initial conditions, but can also be provided by the control.) Loss of information between the starting and ending times is intuitively sensible: small vertical-scale structures in $\mathbf{x}(0)$ do not survive measurably over 100,000 yr in a diffusive system. Large vertical-scale structures can and do survive; see the analytical solutions in W15 and the cases analyzed below.

15 Suppose that the initial condition were zero. Then “controllability” would answer the question of whether any choice of control in $C_h(t) = q(t) + u(t)$ would carry the system to the terminal data $C_{term}(z)$? The controllability matrix Θ (e.g., Wunsch, 2006, p. 232) is

$$\Theta = \{ \mathbf{I}_{2N}, \mathbf{A}, \mathbf{A}^2, \dots, \mathbf{A}^{t_f - \Delta t} \} \mathbf{\Gamma} \quad (5)$$

The system is controllable only to the extent that Θ is full rank, M , for $t_f - \Delta t = (N - 2)\Delta t$. In the present case, from the
20 definition of $\mathbf{\Gamma}$ (Eq. 3), the rank is estimated as about 33.

Neither of these concepts depends on the actual data. The formalisms can be used to find explicit descriptions of the terminal data structures determinable from the initial conditions and controls. Here we proceed instead by direct construction of the solutions, having inferred that there will be a strong dependence on *both* initial conditions and controls, with some inevitable residuals (the null spaces) to be regarded as “noise.” A fuller discussion of controllability and observability depends upon
25 understanding whether the smaller, but non-zero, eigenvalues of \mathbf{A} and its powers are sufficiently large compared to the unclear noise level. The observability/controllability approach is outlined here because it is an open-ended analysis method for any future discussions of the present problem, and one that is largely independent of the particular data available.

3 The Data

Fig. 2 displays the positions of the five cores for which $\delta^{18}\text{O}_w$ data were available (courtesy of M. Miller, personal commu-
30 nication, 2015, and see Table 2) superimposed upon the *modern* $\delta^{18}\text{O}_w$ distribution at 3500m from the GISS website; see

LeGrande and Schmidt (2006). The modern range at this depth is roughly from -0.3 to 0.3 o/oo, plus outliers. An artificial boundary for the Antarctic-origin bottom waters, owing to a lack of data, is visible (see LeGrande and Schmidt, 2006), as is the relatively strong gradient in the Atlantic Ocean. Any calculated global spatial average from four locations for this or any other depth would have a large uncertainty. For reference purposes, a straight area-weighted average of the gridded values in Fig. 3 is -0.013 o/oo.

Measured terminal porosity in each of the cores is displayed in W15. Fig. 3 shows the $\delta^{18}\text{O}_w$ measurements with depth, with the exception of core 1239, which is shown in Fig. 4.

The visible fluctuations in all cores exceed the estimated analytical accuracy of 0.03 o/oo (Adkins and Schrag, 2001), but the extent to which they represent real changes in boundary conditions through time, their initial conditions and fluxes from below the measured core depth, as opposed to a variety of noise processes in the formation of a core undergoing active sedimentation, remains obscure. One of the major issues is whether structures other than the visible overall maximum, presumably at the LGM, are signals to be understood, or mere noise, to be suppressed.

Differences among the core $\delta^{18}\text{O}_w$ do not easily support an hypothesis of any kind of globally uniform variation in the bottom water concentration, $C_h(t) = q(t) + u(t)$ anywhere below about 100m core-depth. Visually, cores 1093 and 1239 are qualitatively different from the other three, with 1239 showing very large excursions near the core-top, and 1093 having roughly constant values with depth, but with superimposed structures. Under-sampled core 1239 has extreme values represented primarily by single point excursions, likely connected to the extreme volatility of dynamical properties in the equatorial Pacific Ocean and is not further discussed here. The remaining three cores all have a visual maximum of greater or lesser definition at some tens of meters depth. Whether other features are noise or signal is an imponderable. Differences in core water depths must always be borne in mind as well.

Variations among the cores imply that there need not be any overall, that is global, control on their time histories. (See the cautionary statements in Schrag et al., 2002). Dynamics and modern oceanographic structures (as in Fig. 2) instead support the accepted inference of different time histories of the values of $\delta^{18}\text{O}_w$ in the bottom waters, consistent with the different core profiles.

Fig. 5 shows normalized versions of the oxygen isotope and salinity data in the cores. If these two properties satisfy the same advection-diffusion equation (1), they must have different temporally varying boundary and/or initial conditions, or be subject to possible biogeochemical interactions not treated here.

Begin as in W15, in which the observed core provides the terminal constraint, and the initial condition is assumed to be the same as the terminal one, but with a larger error estimate. Absent any more compelling possibility, the same sealevel curve, is used, but scaled as in Fig. 1.

3.1 The Average $\delta^{18}\text{O}_w$ Core

Knowledge of oceanic dynamics and the modern distribution, as well as the core $\delta^{18}\text{O}_w$ data in Fig. 3 make it very unlikely that a globally uniform shift in the oxygen isotope ratio ever occurred. Injection of ice-melt, precipitation, and evaporation necessary to remove and create continental ice sheets controlling the porewater $\delta^{18}\text{O}_w$ involve primarily oceanic surface properties, and

the time scale to reach any kind of dynamic and kinematic equilibrium over the entire ocean volume requires thousands of years (e.g., Wunsch and Heimbach, 2008; Siberlin and Wunsch, 2010; Gebbie, 2012).

As a simplified context for later discussion of the individual cores, a start is made by averaging the four cores displayed in Fig. 3, with the result also shown there, and extending to the depth of the shallowest record (138m). An average core does not exist in nature, but provides a generic data set to discuss the methodology and results. In any core, one can guess at the structures to be treated as a noise process rather than as signal. Averaging is a data-based noise reduction process, in which incoherent small-vertical scale features will tend to be suppressed. With four examples, the standard error of the result, shown in Fig. 6, is very large, having only three degrees of freedom. Nonetheless, we proceed. No attention has been paid to differences in sedimentation rate, or other depth controlling processes. Results will be used as a framework for later discussion of the individual cores. Because of the linearity of the problem, the final estimation uncertainties do not depend upon the data themselves. In addition, the control solution for the average core will be the same as averaging the controls of the individual cores—if the same statistics are used for them.

The analysis follows much of the earlier literature in setting $w = 0$. Results from assuming a purely diffusive response, “near-periodic” initial conditions (initial conditions set to the data), and a constant $C_h(t) = 0$ are shown in Fig. 7. $\mathbf{P}_0 = (2\sigma/\sigma_0)^2 \mathbf{I}$, $Q = (2\sigma/\sigma_0)^2$. A very large initial condition uncertainty, $\pm 2\sigma/\sigma_0$ is assigned to both initial conditions and the control, respectively. The terminal data uncertainty is the calculated standard deviation of the four cores. Unless specifically stated otherwise, k is linearly increasing over the top 100m core depth with values $5 \times 10^{-11} - 10^{-10} \text{m}^2/\text{s}$ in all cases.

The fit to the terminal state is statistically acceptable, with an isotopic maximum at 60-70 m. On the other hand, no significant LGM maximum appears in the control—instead, the smoother places most of the structure into the initial conditions—which, consistent with the observability discussion, persists as a local maximum through the 100 ky time interval. This result emphasizes the ambiguity of initial conditions and control.

Examples such as this one render concrete a number of interlocking elements of the problem. (1) Noise or uncertainty covariances for the initial conditions, the terminal data, and the prior $C_h(t)$ are as much a part of the model as is k , and the underlying partial differential equation, or the data themselves. Their choices determine what is regarded as signal and what is noise. (2) Consider an extreme case. By setting the initial conditions equal to the terminal data within some uncertainty, and letting $k \rightarrow 0$, a completely acceptable solution would be found by fixing the control as the constant $C_h(t) = C_{term}(z = 0)$. In the limit, all of the initial condition structure is maintained to $t = t_f$. The only reason to preclude such a solution is the requirement that $k > 0$. (3) In producing a local maximum at the depth inferred to be the properties of the LGM, the governing equation produces a tight tradeoff between a large value of k , permitting adequate penetration to the observed depth, versus its strong tendency to diminish the amplitude of the resulting maximum (cf. Adkins and Schrag, 2003). Whether both amplitude and depth can be simultaneously reproduced, with a simple rule for k , has to be determined in each case, and a judgment may have to be made as to which, if either feature, is the more robust element in the data?

In contrast to the quasi-periodic initial and final conditions, Fig. 8 shows the result when the initial condition was taken to be zero: the system responds by reconstructing the near-periodic initial condition. Again the residual is acceptable. Initial conditions are very important with these diffusivity values and the time interval.

Now consider what happens when the prior is taken to be the scaled sea level curve of Fig. 1, with zero initial conditions, and as shown in Fig. 9. The terminal fit is once again acceptable, and the control adjustments are very small. The standard inference of enhanced $\delta^{18}\text{O}_w$ by order 1 o/oo at about -20 ky relative to today is also consistent with the model and the data. A maximum at about -20 KY, now a conventional inference, is possible. But as in W15 for salinity, an LGM maximum is not
5 *required* by them, but becomes an assumption to rationalize temperature data.

The strong dependence upon the initial condition is striking. *It can be suppressed* as shown in Fig. 10 where the initial condition was set to zero, with a minute uncertainty, and the terminal uncertainty was strongly downweighted in the vicinity of the depth of the local maximum. Then as shown in the figure, a solution reproducing the terminal maximum is found, with a time-varying control over almost the entire record whose changes are interesting but not readily interpretable. Uncertainty in
10 $\tilde{u}(t)$ still greatly exceeds any useful range.

When the sealevel prior is used in this situation (not shown), the final total control is visually very similar to that shown in Fig. 9. This result suggests that suppression of the initial conditions as unknowns brings the system closer to producing a unique control, but a zero initial state is not easily justified.

3.2 Core 1063

15 In turning to the individual cores, all of the problems arising in the discussion of the mean core remain including: the sensitivity to the assumptions about the initial conditions, in turn depending upon the values structures and signs of w, k ; whether the prior is the sea level curve or is agnostically flat; the uncertainties assigned to the initial conditions, the abyssal value priors, and the terminal data, among others. With the freedom implied to choose somewhat arbitrarily amongst these variables, the number of potential numerical experiments for each core becomes overwhelming and decreasingly informative. Thus only a handful of
20 examples for the different individual cores is shown.

None of the five cores is obviously “typical”, but core 1063 on the Bermuda Rise, a focus of the study of Adkins and Schrag (2001), has the characteristic maximum at depth with a quasi-linear decrease with depth. Again only the upper 100m are considered.

Fig.11 shows the Core 1063 solution with quasi-periodic boundary conditions when it is forced to the water column maximum by greatly reducing the estimated error in its vicinity, and with the sea level prior. The fit near the maximum is, as forced
25 and expected, good, but the smaller scale structures are not reproduced. The same situation, but with the flat zero-prior is shown in Fig. 12. This solution is marginally better than for the sea level prior, but no LGM maximum appears in the control. In terms of the residuals, this solution effectively treats all structures in the top 100 m of the core, except for the maximum excursion, as a noise process. If that inference is accepted, then a posteriori, an estimate of the variance of the noise structure in the core
30 data has been made.

3.3 Core 1093

Core 1093, in the Southern Ocean on the Southwest Indian Ridge, has been the main basis of the inference of a strongly salinity stratified abyssal ocean during the LGM. For the top 100 m of $\delta^{18}\text{O}_w$, Fig. 13 shows that once again the quasi-periodic initial

conditions with a flat prior can reproduce the terminal constraint but with no requirement of a maximum in $q(t) + u(t)$. The initial condition carries most of the structure. With the sea level prior (not shown), a maximum in the control near -20 KY again is found, but without statistical significance.

3.4 Cores 981, 1123

- 5 Similar results emerge from the remaining two cores and so only representative solutions are shown in Figs. 14, 15, both for the case of quasi-periodic initial conditions, the flat prior and forcing to the terminal time $\delta^{18}\text{O}_w$ peak at depth. As in the other cores, the dependence on the initial conditions is clear. Both show a significant adjustment, $\tilde{u}(t)$, near the terminal time, but neither requires an LGM peak, although the sea level prior is also acceptable (not shown).

4 Discussion

- 10 To a very great extent, the results of analyzing these cores depend very directly upon a long list of assumptions of which a rough summary would include:

- (1) Physics/chemistry are one-dimensional
- (2) Sedimentation rates are constant
- (3) Rules for diffusivity/porosity/tortuosity are accurate
- 15 (4) Advection/diffusion without chemical reaction processes is adequate
- (5) Initial conditions are similar to the terminal measurements, but with a larger uncertainty.
- (6) $k(z, t), w(z, t)$ are time independent (and equal to the estimated terminal value).
- (7) Structures in the terminal values are (are not) signals or are (are not) noise and accuracy is dominated by analytical accuracy (or not).
- 20 (8) Lower boundary condition at $z = 0$ is one of no flux, with no important upward diffusion or advection from below the data depth.
- (9) The scaled sea level curve is a useful prior boundary condition estimate of order ± 1 g/kg for salinity and ± 1 o/oo for $\delta^{18}\text{O}_w$.
- (10) Variance estimates for the uncertainties in the terminal data and in the initial conditions are approximately correct.
- 25 (11) The complex boundary layers at the sediment/water interface are adequately replaced by a simple concentration boundary condition.

- An intimate connection exists in the solutions between the physical model (advection/diffusion), and the statistical model (the several uncertainty estimates) and which govern the division between signal and noise in the data. For the range of k used here, the competition between dominance by the initial conditions and the changes induced by the control can produce
- 30 a realistic maximum at depth *only by interpreting everything except the gross shape as an unexplained noise structure*. This inference may well be correct, but is not proven. The great sensitivity to initial conditions can be reduced, as in W15, by

assuming a significant downward-directed advection velocity, $w < 0$. Support for such an hypothesis would have to come from a great deal more knowledge of the fluid-sediment dynamical model.

The overall inference here, consistent with both M15 and W15, is that the conventional picture of a very cold, highly saline abyssal ocean during the LGM remains possible, but is not a *requirement* of the existing data. If LGM $\delta^{18}\text{O}_w$ is insufficiently enhanced, then taken at face value, the $\delta^{18}\text{O}_c$ data implies some oceanic temperatures below the freezing point. That issue might be sufficient to be convincing evidence that high $\delta^{18}\text{O}_w$ *must* have occurred, but the dependence upon the reliability of the interpretation of the foraminifera data will be plain. A full discussion of the uncertainties of those data does not seem to be available, although regression lines without error estimates are in use (e.g., Bradley, 1999). A growing literature (e.g., Marchal and Curry, 2008; Huybers and Wunsch, 2010; Burke et al., 2011; Gebbie, 2012; Amrhein et al., 2015; W15; M15) attempting to quantify inferred circulation differences between the LGM and the modern increasingly finds it difficult to distinguish any qualitative or even quantitative differences. Such findings do not disprove hypotheses of major change to water mass volumes, including cold, strong abyssal salinities during the LGM, but only reinforce the need for far more data than are now available—if the hypotheses are to become factual.

Appendix A: Appendix: Numerical Tests

15 Consider a purely diffusive system, with $k = k_0 + k_1z$, that is growing linearly from the bottom of the core, $z = 0$ to the top at $z = h$. The governing equation is

$$(k_0 + k_1z) \frac{\partial^2 c}{\partial z^2} + k_1 \frac{\partial c}{\partial z} - \frac{\partial c}{\partial t} = 0, \quad (\text{A1})$$

subject to the periodic boundary condition, $C_h(t) = c(z = 0, t) = \cos(\sigma t)$, $\sigma = 2\pi/20000\text{y}$, with t in years. Setting $c = \hat{c}(z) \exp(-i\sigma t)$, and making the substitution, $\zeta = k_0 + k_1z$, a form of Bessel's equation is found (Olver, 2010)

$$20 \frac{d^2 \hat{c}(\zeta)}{d\zeta^2} + \frac{1}{\zeta} \frac{d\hat{c}(\zeta)}{d\zeta} + \frac{i\sigma \hat{c}(\zeta)}{k_1^2 \zeta} = 0,$$

with solution

$$\hat{c}(\zeta) = aJ_0\left(\frac{2\sqrt{i\sigma}}{k_1}\zeta\right) + bY_0\left(\frac{2\sqrt{i\sigma}}{k_1}\zeta\right) \quad (\text{A2})$$

where J_0, Y_0 are the Bessel functions, noting the singular behavior as $k_1 \rightarrow 0$ (Kelvin functions can also be used). The upper and lower boundary conditions are

$$25 \ aJ_0\left(\frac{2\sqrt{i\sigma}}{k_1}(k_0 + k_1L)\right) + Y_0\left(\frac{2\sqrt{i\sigma}}{k_1}(k_0 + k_1L)\right) = 1, \ z = L$$

$$aJ_1\left(\frac{2\sqrt{i\sigma}}{k_1}k_0\right) + Y_1\left(\frac{2\sqrt{i\sigma}}{k_1}k_0\right) = 0, \ z = 0$$

and solved for a, b , where the identities $J'_0 = -J_1, Y'_0 = -Y_1$ were used. Fig. 17 shows the comparison between the numerical and analytical solutions, as well as the result with constant k in place of the linear form used in this paper.

Acknowledgements. Supported in part by the National Science Foundation under Grant OCE096713 to MIT. I am again grateful to Dr. M. Miller for making the data available to me and for discussions of their use. D. Schrag was very helpful in skeptical discussions of the background, and of the details of this problem. I had very useful comments from the general to the very detailed by G. Gebbie, O. Marchal, and the anonymous referee.

References

- Adkins, J. F., and D. P. Schrag (2001), Pore fluid constraints on deep ocean temperature and salinity during the last glacial maximum, *Geophys. Res. Letts.*, 28(5), 771-774.
- Adkins, J. F., and D. P. Schrag (2003), Reconstructing Last Glacial Maximum bottom water salinities from deep-sea sediment pore fluid profiles, *Earth Plan. Sci. Letts.*, 216(1-2), 109-123.
- Adkins, J. F., K. McIntyre, and D. P. Schrag (2002), The salinity, temperature, and $\delta^{18}\text{O}$ of the glacial deep ocean, *Science*, 298(5599), 1769-1773.
- Amrhein, D. E., G. Gebbie, O. Marchal, and C. Wunsch (2015), Inferring surface water equilibrium calcite $\delta^{18}\text{O}$ during the last deglacial period from benthic foraminiferal records: Implications for ocean circulation, *Paleoceanog.*, 2014PA002743.
- Berner, R. A. (1980), *Early Diagenesis: A Theoretical Approach*, xii, 241 p. pp., Princeton University Press, Princeton, N.J.
- Boudreau, B. P. (1997), *Diagenetic Models and Their Implementation: Modelling Transport and Reactions in Aquatic Sediments*, xvi, 414 p. pp., Springer, Berlin; New York.
- Bradley, R. S. (1999). *Paleoclimatology*, 2nd Ed., Academic, 610pp.
- Bruna, M., and S. J. Chapman (2015), Diffusion in spatially varying porous media, *SIAM J. Appl. Maths.*, 75(4), 1648-1674.
- Burke, A. O. Marchal, LI. Bradtmiller, J. F. McManus, R. François (2011), Application of an inverse method to interpret $^{231}\text{Pa}/^{230}\text{Th}$ observations from marine sediments. *Paleoceanog.*, 26, Pa121210.1029/2010pa002022.
- Carter, R. M., I. N. McCave, C. Richter, L. Carter, et al. (1999), *Proc. ODP, Init. Repts.*, 181, edited.
- Dade, W. B., A. J. Hogg, and B. P. Boudreau (2001), Physics of flow above the sediment-water interface, in *The Benthic Boundary Layer. Transport Processes and Biogeochemistry*, edited by R. D. Boudreau and B. B. Jørgensen, Oxford University Press, New York.
- Duplessy, J. C. (1978), Isotope studies, in *Climatic Change*, edited by J. Gribben, pp. 46-67, Cambridge Un. Press, New York.
- Fairbanks, R. G. (1989), A 17,000-year glacio-eustatic sea-level record - influence of glacial melting rates on the Younger Dryas event and deep-ocean circulation, *Nature*, 342, 637-642.
- Franklin, G. F., J. D. Powell, and M. L. Workman (1998), *Digital Control of Dynamic Systems*, 742 pp. pp., Addison-Wesley, Menlo Park.
- Gebbie, G. (2012), Tracer transport timescales and the observed Atlantic-Pacific lag in the timing of the Last Termination, *Paleoceanog.*, 27.
- Gersonde, R., D. A. Hodell, P. Blum, and et. al. (1999), *Proc. ODP, Init. Repts.*, 177 edited.
- Goodwin, G. C., and K. S. Sin (1984), *Adaptive Filtering Prediction and Control*, 540pp pp., Prentice-Hall, Englewood Cliffs, N. J.
- Huettel, M., and I. T. Webster (2001), Porewater flow in permeable sediments, in *The Benthic Boundary Layer: Transport Processes and Biogeochemistry*, edited by R. D. Boudreau and B. B. Jørgensen, pp. 144-179, Oxford Un. Press, New York, NY.
- Insua, T. L., A. J. Spivack, D. Graham, S. D'Hondt, and K. Moran (2014), Reconstruction of Pacific Ocean bottom water salinity during the Last Glacial Maximum, *Geophysical Research Letters*, 41(8), 2914-2920.
- IPCC (2013), *Climate Change 2013: The Physical Science Basis. Contribution of Working Group I to the Fifth Assessment Report of the Intergovernmental Panel on Climate Change*, 1535 pp., Cambridge Un. Press Cambridge UK and New York.
- Jansen, E., M. E. Raymo, P. Blum, et al. (1996), *Proc. ODP, Init. Repts.*, 162: College Station, TX (Ocean Drilling Program), 49?90. doi:10.2973/odp.proc.ir.162.103.1996.
- Keigwin, L. D., Rio, D., Acton, G.D., et al., (1998), *Proc. ODP, Init. Repts.*, 172: College Station, TX (Ocean Drilling Program), 251?308.

- doi:10.2973/odp.proc.ir.172.106.1998.
- Kobayashi, H., A. Abe-Ouchi, and A. Oka (2015), Role of Southern Ocean stratification in glacial atmospheric CO₂ reduction evaluated by a three-dimensional ocean general circulation model, *Paleoceanog.*, 30(9), 2015PA002786.
- LeGrande, A. N., and G. A. Schmidt (2006), Global gridded data set of the oxygen isotopic composition in seawater, *Geophys. Res. Letts.*, 33(12).
- 5 Lions, J. L. (1971), *Optimal Control of Systems Governed by Partial Differential Equations*, 396 pp., Springer-Verlag, Berlin.
- Marchal, O. (2014), On the observability of oceanic gyres, *J. Phys. Oc.*, 44(9), 2498-2523.
- Marchal, O., and W. B. Curry (2008), On the abyssal circulation in the glacial Atlantic, *J. Phys. Oc.*, 38(9), 2014-2037.
- Margo Project Members (2009). Constraints on the magnitude and patterns of ocean cooling at the Last Glacial Maximum, *Nature Geosci.*, 2, 127-132.
- 10 McDuff, R. E. (1985), The chemistry of interstitial waters, Deep-Sea Drill Project Leg-86, Initial Reports of the Deep Sea Drilling Project, 86(NOV), 675-687.
- Miller, M. D. (2014), *The Deep Ocean Density Structure at the Last Glacial Maximum. What Was It and Why?*, 136 pp, PhD Thesis, Cal. Tech., Pasadena.
- 15 Miller, M. D., M. Simons, J. F. Adkins, and S. E. Minson (2015), The information content of pore fluid $\delta^{18}\text{O}$ and $[\text{Cl}^-]$, *J. Phys. Oc.*, 45, 2070-2094.
- Mix, A., R. Tiedemann, P. Blum (2002), Initial Reports, *Proc. Ocean Drilling Prog.* , 202
- Olver, F. W. J., Ed. (2010), *NIST Handbook of Mathematical Functions*, xv, 951 p. pp., Cambridge University Press, NIST, Cambridge; New York.
- 20 Otto-Bliesner, B. L., E. C. Brady, G. Clauzet, R. Tomas, S. Levis, and Z. Kothavala (2006), Last Glacial Maximum and Holocene climate in CCSM3, *Journal of Climate*, 19(11), 2526-2544.
- Roache, P. J. (1976), *Computational Fluid Dynamics*, 446 pp. pp., Hermosa, Albuquerque, N.M.
- Schrag, D. P., and D. J. Depaolo (1993), Determination of $\delta^{18}\text{O}$ of seawater during the last glacial maximum, *Paleoceanography*, 8(1), 1-6.
- 25 Schrag, D. P., G. Hampt, and D. W. Murray (1996), Pore fluid constraints on the temperature and oxygen isotopic composition of the glacial ocean, *Science*, 272(5270), 1930-1932.
- Schrag, D. P., J. F. Adkins, K. McIntyre, J. L. Alexander, D. A. Hodell, C. D. Charles, and J. F. McManus (2002), The oxygen isotopic composition of seawater during the Last Glacial Maximum, *Quat. Sci. Revs.*, 21(1-3), 331-342.
- Siberlin, C., and C. Wunsch (2010), Oceanic tracer and proxy time scales revisited, *Clim. Past Discuss.*, 6, 1589-1628.
- 30 Voermans, J., M. Ghisalberti, and G. Ivey (2016), Coherent vortex structures at the sediment-water-interface, paper presented at 11th International Symposium on Ecohydraulics, Melbourne, Australia.
- Wunsch, C. (2006), *Discrete Inverse and State Estimation Problems: With Geophysical Fluid Applications*, xi, 371 p., 312 p. of plates pp., Cambridge University Press, Cambridge; New York.
- Wunsch, C. (2016), Pore fluids and the LGM ocean salinity—reconsidered, *Quat. Sci. Revs.*, 135, 154-170.
- 35 Wunsch, C., and P. Heimbach (2008), How long to ocean tracer and proxy equilibrium?, *Quat. Sci. Rev.*, 27., doi:10.1016/j.quascirev.2008.1001.1006, 1639-1653.

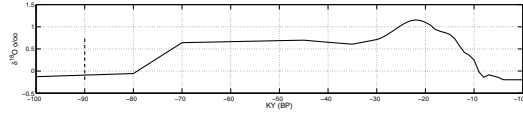


Figure 1. Prior estimate of the ocean-sediment interface boundary condition on $\delta^{18}\text{O}_w$, derived from the sea level curve of Miller et al. (2015). The maximum a priori value, for the LGM is $1.15 \pm 1\text{o}/\text{o}$ and the minimum, calculated very approximately from the data in Fig. 2 is $-0.2 \pm 1\text{o}/\text{o}$, consistent with previous such estimates in the references (e.g., Miller et al., 2015). Time zero is at -100 ky. Vertical dashed line indicates a range of 1 o/o between the nominal modern and the change to the LGM described by Schrag et al. (2002).

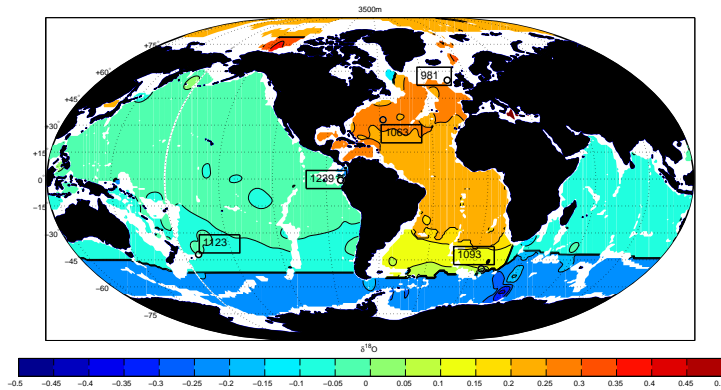


Figure 2. Modern $\delta^{18}\text{O}_w$ at 3500m (from LeGrande and Schmidt, 2006) with superimposed core positions (black circles). Note, however, that the core tops are not generally at this depth (Table 2). G. Gebbie (private communication, 2015) concluded that the structures in this chart are overly sensitive to the method used for gridding. Region of little or no data in the Southern Ocean is bounded by the thick black line.

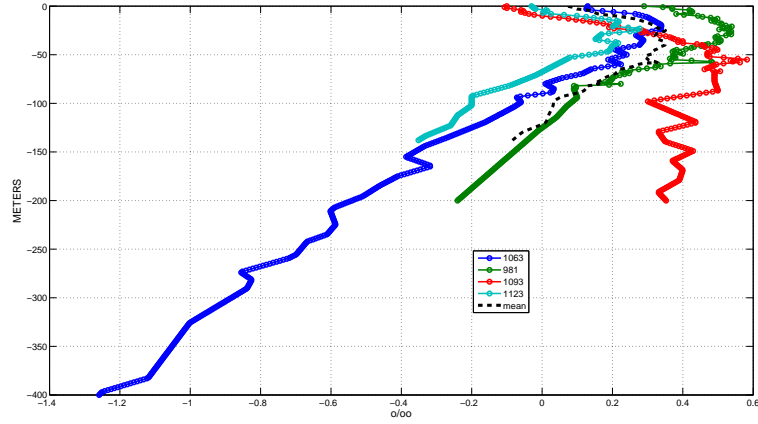


Figure 3. The four $\delta^{18}\text{O}$ profiles used here along the mean value to the depth of the shallowest record (core 1123). Recall that the tops of the cores lie at different water depths.

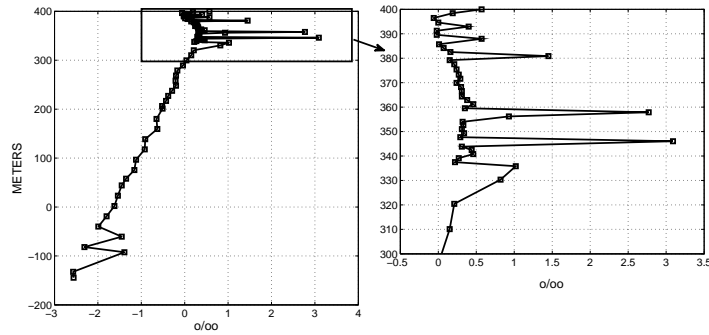


Figure 4. $\delta^{18}\text{O}$ in core 1239, eastern equatorial Pacific, showing apparent undersampling near the core top and likely related to the intense dynamical variations expected on the equator and continental margins. These data were not further used here. Position of zero in depth is arbitrary.

Notation	Variable	Definition
Initial Condition	$C_0(z)$	$c(t=0, z)$
Boundary Condition	$C_h(t)$	$c(t, z=0)$
Terminal Condition	$C_{\text{term}}(z)$	$c(t=t_f, z)$

Table 1. Notation used for initial, final and boundary conditions. In the discrete form, two time-steps of the concentration c make up the state vector, $\mathbf{x}(t)$, and corresponding imposed conditions, Tildes over variables denote estimates.

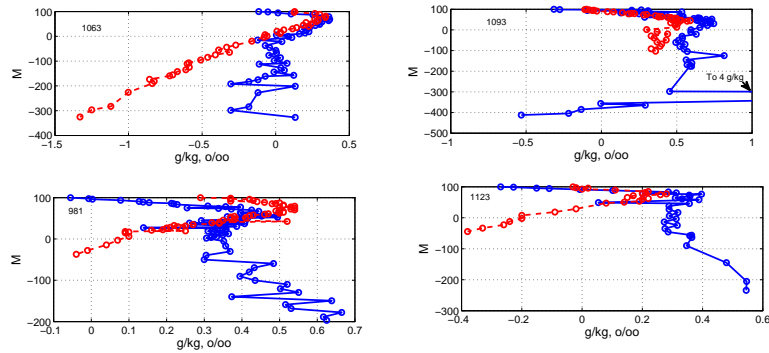


Figure 5. Measured salinity minus 35 g/kg (blue solid curves) and $\delta^{18}\text{O}_w$ (red dashed) in four cores. With the possible exception of core 1093 in the upper 100m, the two data sets are quite distinct and hence inconsistent with a common advection-diffusion equation and boundary and initial conditions. The zero is set arbitrarily at 100m.

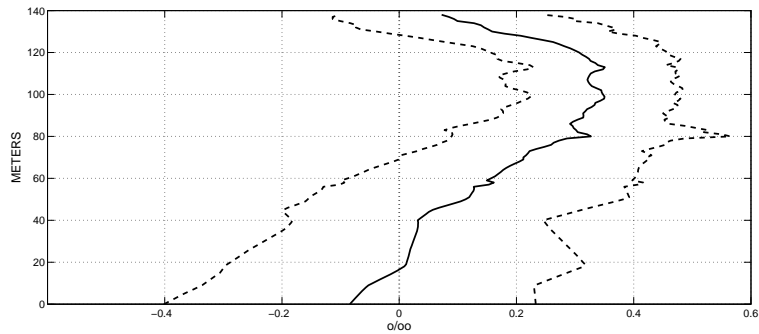


Figure 6. The mean of four core $\delta^{18}\text{O}$ values and their formal standard deviation with three degrees of freedom. Values differ from zero at one standard deviation only in the interval from about 10 to 70 m depth. Only the top 100 m of data are used in the analysis here.

Core No.	Reference	Location	Water Depth (m)
ODP981	Jansen et al. (1996)	NE Atlantic, Feni Drift/Rockall	2200
ODP1063	Keigwin et al. (1998)	Bermuda Rise	4600
ODP1093	Gersonde et al. (1999)	Southern Ocean, SW Indian Ridge	3600
ODP1123	Carter et al. (1999)	E. of New Zealand, Chatham Rise	3300
ODP1239	Mix et al. (2002)	E. Tropical Pacific, Carnegie Ridge/Panama Basin	1400

Table 2. Cores from which salinity (chlorinity) data were used, along with a reference to their initial description in the Ocean Drilling Program (ODP) and with a geographical label. A nominal water depth of the core-top is also listed.

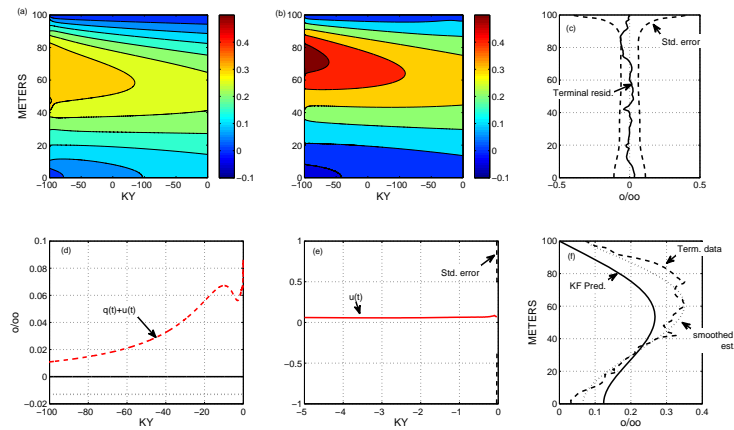


Figure 7. Purely diffusive solution for the mean core, to 100 m depth, with k linearly increasing from $5 \times 10^{-11} \text{ m}^2/\text{s}$ to $10^{-10} \text{ m}^2/\text{s}$, $w = 0$. The prior boundary condition is $C_h(t) = 0$ and the initial condition is the same as the terminal data, with larger uncertainties. Final values are all within one standard deviation of the estimated error bar. Apart from a small increase in u (correction to $C_h(t)$ with time), the system reproduces the terminal constraint largely by adjusting the initial conditions. (a) Kalman filter (KF) solution from initial conditions and no control adjustment. (b) Final smoothed estimate over the 100 ky. (c) Residual (solid line) at the terminal time between the estimate and the terminal data, and the one-standard deviation uncertainty limits. (d) The total control $q(t) + \tilde{u}(t)$ (dashed) and prior $q(t)$ (solid) as well as the estimated maximum and minimum of LGM $\delta^{18}\text{O}_w$. (e) $u(t)$ except only the last 5 ky and showing the sharp drop in its uncertainty near the terminal time. Standard errors lie off-scale except at the very end. (f) Kalman filter (KF) prediction of the terminal data (same as a conventional forward calculation from the initial conditions and a priori $C_h(t)$, solid line), the terminal data (dash-dot), and the RTS fit to the data.

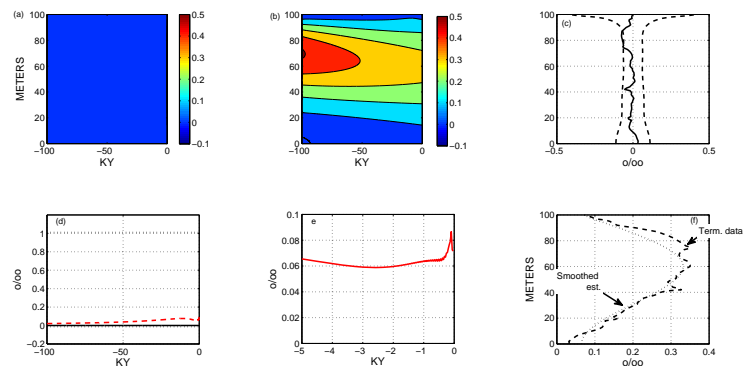


Figure 8. Same as Fig. 7 except that the initial condition was zero with a large uncertainty, rendering the Kalman filter solution zero until the very end when the terminal data are encountered so that the prediction is zero. The smoothed solution is very similar to that with a near-periodic initial condition, and the initial condition roughly reconstructed.

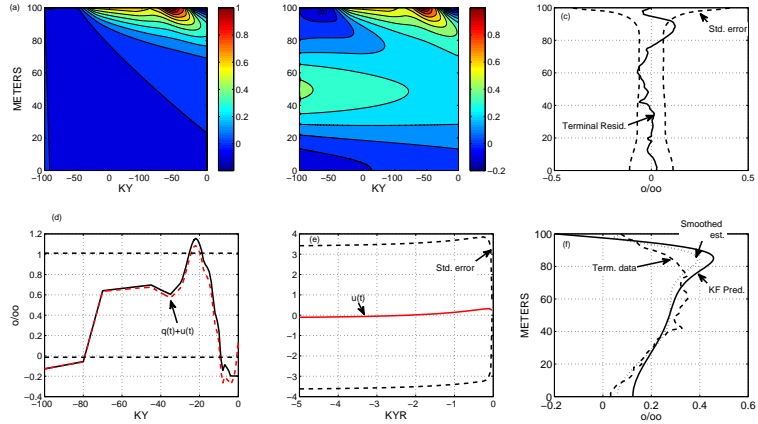


Figure 9. The mean core, upper 100m, zero initial conditions but with the sea level prior in Fig. 1. The small adjustment, $u(t)$, demonstrates that the terminal data are also consistent with the inference of a very high $\delta^{18}O_w$ at about -20ky with an increment exceeding 1 o/oo between the LGM and the present. Note, however, the very large uncertainties remaining in $\tilde{u}(t)$.

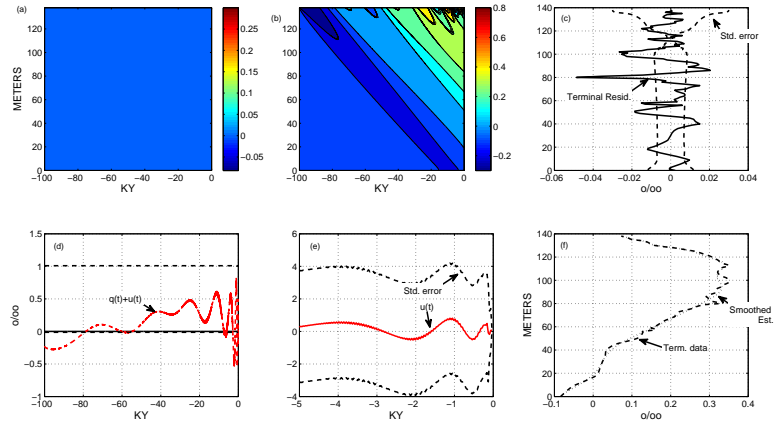


Figure 10. Using the full 140m of the average core, with the zero initial conditions prevented from changing significantly with very small uncertainty, and a flat prior, a solution reproducing the $\delta^{18}O_w$ maximum at depth through the arbitrarily reduced values of the terminal data uncertainty, \mathbf{R} , there and treating all other features as errors. $\tilde{u}(t)$ is now distributed over most of the 100 KY, but with no statistical significance anywhere. Strong reduction in the prior uncertainty of the terminal state is visible as the very narrow standard errors in the estimate visible in (c) and in the terminal reproduction of the gross maximum. Large number of outliers in $\tilde{c}(z, t_f)$ imply an inconsistency between the solution and the prior error estimate.

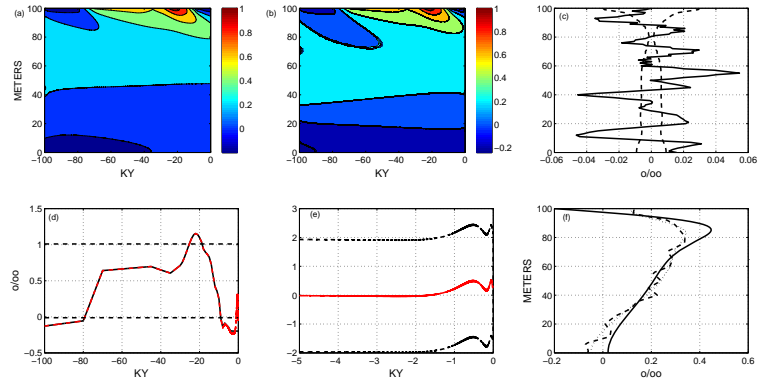


Figure 11. Core 1063 with the sea level prior, periodic initial conditions and a solution forced to reproduce the local maximum through the terminal uncertainty estimate (small \mathbf{R}). All residual structures would be noise of unknown nature. The $C_h(t)$ maximum does exceed the estimated volumetric global mean, but the uncertainties remain close to ± 2 o/oo. Again, pinched error bars in (c) show the forcing to the local maximum visible in (f). This solution is most like those discussed in the earlier literature, fitting only to the local maximum, and treating all other structures as noise.

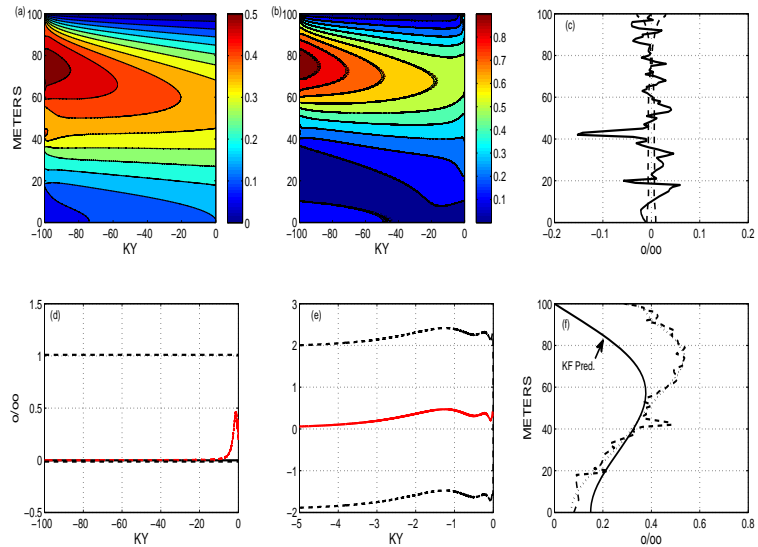


Figure 12. Core 1063 with a flat prior, quasi-periodic initial-final conditions, and with the terminal data uncertainty matrix \mathbf{R} structured to emphasize the range of depths of the core maximum. Position and magnitude of the maximum are good. All other structures are then inferred to be a noise process. Compare Fig. 11.

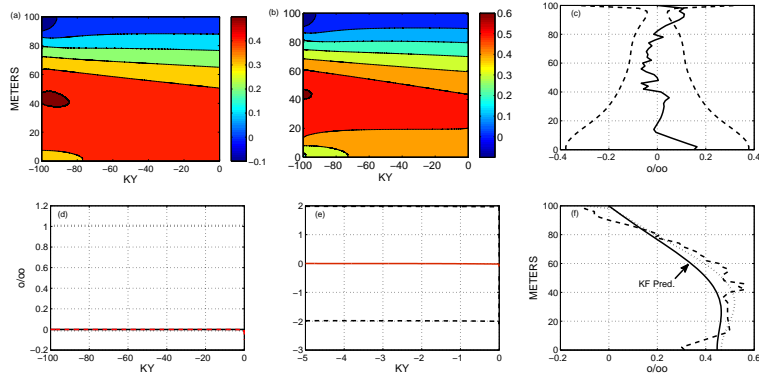


Figure 13. Core 1093 with a quasi-periodic initial condition, a flat prior, and terminal uncertainties forcing solution to the $\delta^{18}\text{O}_w$ at depth. Total control is flat, until the very end.

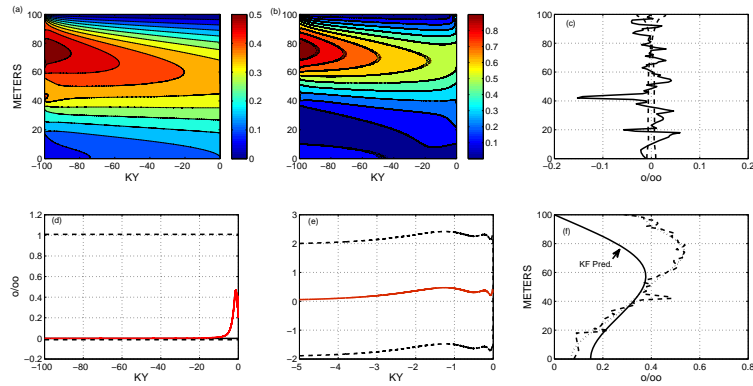


Figure 14. Results for Core 981 in the northeast Atlantic Ocean using a flat prior and quasi-periodic boundary conditions for a solution forced to produce the maximum at depth by uncertainty variance weighting.

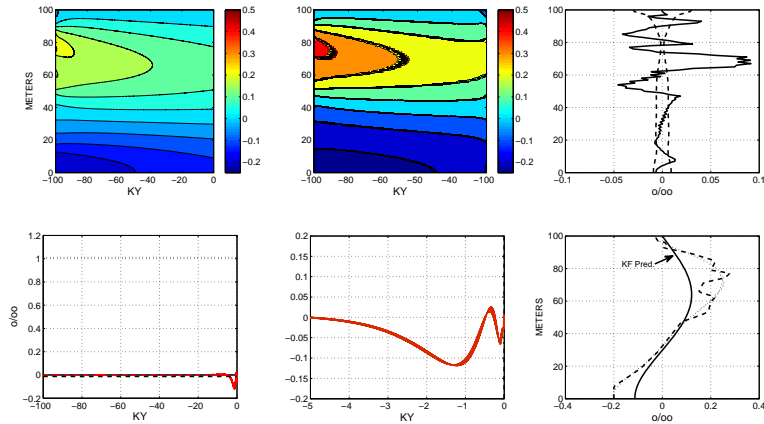


Figure 15. Results for Core 1123, east of New Zealand, for a flat prior, quasi-periodic initial conditions, and forcing to the $\delta^{18}\text{O}_w$ peak at depth.

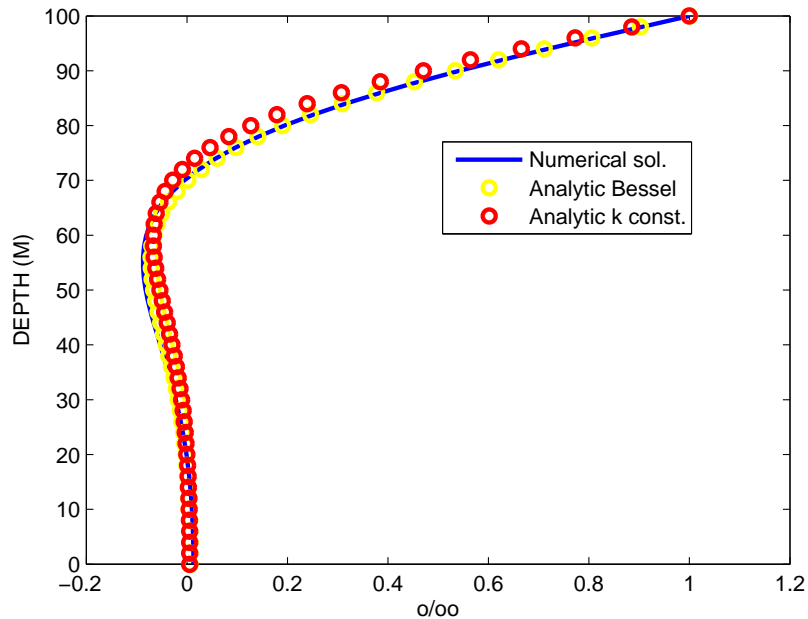


Figure 16. Comparison, for a 100 m deep core, of the numerical solution with $k_0 = 10^{-9} \text{ m}^2/\text{s}$, $k_1 = 10^{-11} \text{ m/s}$ and a 20,000 y period, with the analytical solution (A2). The analytical solution with constant $k = 10^{-9} \text{ m}^2/\text{s}$ is also shown.