

## ***Interactive comment on “Holocene vegetation and climate changes in central Mediterranean inferred from a high-resolution marine pollen record (Adriatic Sea)” by N. Combourieu-Nebout et al.***

**N. Combourieu Nebout**

nathalie.nebout@lsce.ipsl.fr

Received and published: 23 April 2013

An error skipped into the figure 8 in the oxygen isotope curve from MD 90-917 (+ and - saline indicator have been placed in a reverse position (see the corrected figure joined with this comment).

---

Interactive comment on Clim. Past Discuss., 9, 1969, 2013.

Full Screen / Esc

Printer-friendly Version

Interactive Discussion

Discussion Paper



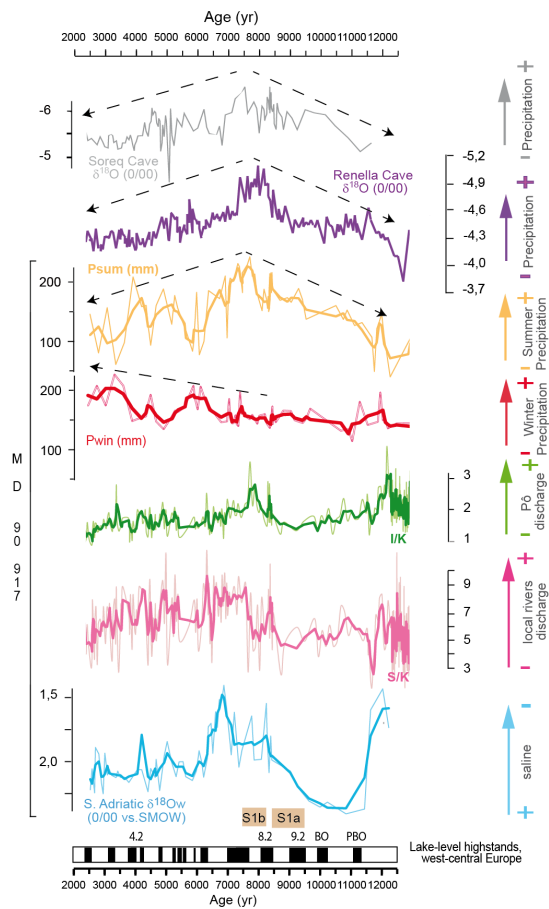
Interactive  
Comment

Fig. 1. Fig 8 corrected

Full Screen / Esc

Printer-friendly Version

Interactive Discussion

Discussion Paper

