

Figure S1: Measurement of known standard used to correct for the drift of the system in 2011.

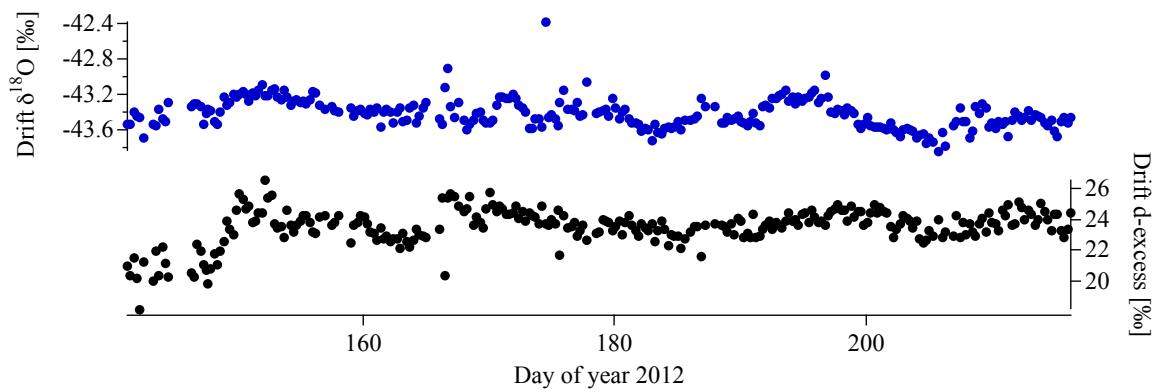


Figure S2: Measurement of known standard used to correct for the drift of the system in 2012.

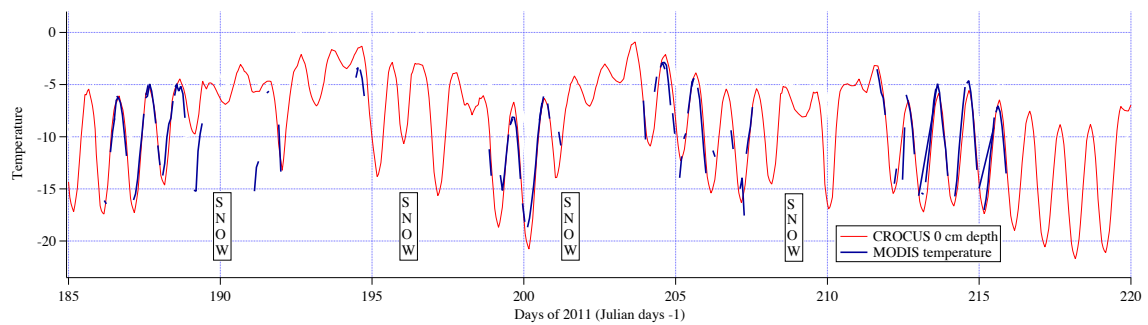


Figure S3: Direct comparison between snow surface skin temperatures obtained from CROCUS and skin temperatures obtained from MODIS MOD11_L2 from TERRA and MYD11_L2 from AQUA.