



This discussion paper is/has been under review for the journal *Climate of the Past* (CP).
Please refer to the corresponding final paper in CP if available.

Multi-decadal to-century NAO-like marine climate oscillations across the Denmark Strait ($\sim 66^\circ$ N) over the last 2000 cal yr BP

J. T. Andrews and A. E. Jennings

INSTAAR and Department of Geological Sciences, University of Colorado,
Boulder, CO 80309, USA

Received: 13 June 2013 – Accepted: 20 June 2013 – Published: 11 July 2013

Correspondence to: J. T. Andrews (andrewsj@colorado.edu)

Published by Copernicus Publications on behalf of the European Geosciences Union.

CPD

9, 3871–3917, 2013

NAO-like climate oscillations across Denmark Strait

J. T. Andrews and
A. E. Jennings

Title Page

Abstract

Introduction

Conclusions

References

Tables

Figures



Back

Close

Full Screen / Esc

Printer-friendly Version

Interactive Discussion

Abstract

In the area of Denmark Strait ($\sim 66^\circ$ N) the two modes of the North Atlantic Oscillation (NAO) are expressed in changes of the northward flux of Atlantic Water and the southward advection of Polar Water in the East Iceland Current. Proxies from marine cores along an environmental gradient from extensive to little or no drift ice, capture low frequency NAO-like variations over the last 2000 cal yr BP. Key proxies are the weight% of calcite, a measure of surface water stratification and nutrient supply, the weight% of quartz, a measure of drift ice transport, and grain-size. Records from Nansen and Kangerlussuaq fjords show variable ice-rafted debris (IRD) records but have distinct mineralogy associated with differences in the fjord catchment bedrock. High-resolution detrended records from Kangerlussuaq Trough show abrupt, significant multi-decadal changes (72 and 56 yr for calcite, and 94 and 65 yr for quartz), and parallel the 2000 yr Arctic summer temperature reconstructions. The calcite minimum occurred ca. 1550 AD whereas the quartz maxima occurred 200 yr earlier. Changes in calcite wt% from N and SW Iceland show similar abrupt changes to those in Kangerlussuaq Trough with an abrupt calcite peak ~ 1320 AD. Quartz values increased at two N Iceland sites in the last 500 yr whereas values declined in the East Greenland site.

1 Introduction

The region of Denmark Strait (Figs. 1 and 2) is the northern end member for calculation of the NAO index (Dawson et al., 2002; Hurrell et al., 2003; Kwok and Rothrock, 1999; Zhang et al., 2004) – our records in this paper cannot detect multi-year oscillations, but they can resolve multi-decadal to -century periodicities. Denmark Strait (Fig. 1) is one of the main gateways linking the Polar and Temperate realms. Strong thermal and salinity gradients exist along a series of marine fronts (Belkin et al., 2009) as northward advected Atlantic Water comes in contact with southward-flowing Polar and Arctic Waters. Drift ice (Koch, 1945), in the form of sea ice and icebergs, is a pervasive feature of

CPD

9, 3871–3917, 2013

NAO-like climate oscillations across Denmark Strait

J. T. Andrews and
A. E. Jennings

Title Page

Abstract

Introduction

Conclusions

References

Tables

Figures

⏪

⏩

◀

▶

Back

Close

Full Screen / Esc

Printer-friendly Version

Interactive Discussion

NAO-like climate oscillations across Denmark Strait

J. T. Andrews and
A. E. Jennings

Title Page

Abstract

Introduction

Conclusions

References

Tables

Figures

⏪

⏩

◀

▶

Back

Close

Full Screen / Esc

Printer-friendly Version

Interactive Discussion

the East Greenland margin with landfast sea ice retaining icebergs within the fjords for months or years (Dwyer, 1995). In contrast, the northern shelf of Iceland varies greatly in ice coverage from little or no drift ice to extensive coverage, and which has serious effects on farming and the fishery (Divine and Dick, 2006; Ogilvie et al., 2000; Ogilvie, 1997). Blindheim et al. (2001) provided an important framework for paleoceanographic studies in the area of Denmark Strait (Fig. 2) by sketching out the major changes in surface oceanography that were associated with North Atlantic Oscillation (NAO) positive/negative atmospheric modes (Hurrell et al., 2003; van Loon and Rogers, 1978) (Fig. 2c). This has also been extended to include the impact on intermediate and deep water circulation in the area of the subpolar gyre, with its center south of Denmark Strait (Sarafanov, 2009), and to the extent of sea ice in the region (Parkinson, 2000; Zhang et al., 2004). However, the NAO is a multi-year oscillation (Fig. 2c) whereas in most paleoceanographic records the sampling resolution is decadal at best, hence we should talk about NAO+/NAO- like (NAO-I) intervals. Zhang and Vallis (2006) noted lagged correlations between low-frequency data of Great Salinity Anomalies (GSA) (Belkin et al., 1998; Dickson et al., 1988), Iceland sea ice extent, Labrador Sea SST anomalies, and the NAO index. Indeed Zhang and Vallis (2006, p. 476) noted that over the last century positive Iceland sea ice anomalies leads (forces?) the positive NAO by 7 yr. Jennings et al. (2002, p. 56) also drew attention to the “NAO paradox” (Dickson et al., 2000), noting, “. . . an extreme example of the lack of correspondence between the NAO and sea-ice flux is the Great Salinity Anomaly.”

The East Greenland Current (EGC) (Fig. 2) transports Polar Water, sea ice, and icebergs along the E Greenland margin (Rudels et al., 2012). The East Iceland Current (EIC) branches from the main EGC and flows toward the N Iceland shelf where it comes in contact with the North Iceland Irminger Current (NIIC), a northward flowing branch of the Irminger Current (IC). The IC flows northward along the W Iceland shelf and a branch is directed westward where it moves landward in the Kangerlussuaq Trough as an intermediate water mass (Jennings et al., 2002, 2011) although the main branch moves southward along the shelf break.

**NAO-like climate
oscillations across
Denmark Strait**J. T. Andrews and
A. E. Jennings[Title Page](#)[Abstract](#)[Introduction](#)[Conclusions](#)[References](#)[Tables](#)[Figures](#)[⏪](#)[⏩](#)[◀](#)[▶](#)[Back](#)[Close](#)[Full Screen / Esc](#)[Printer-friendly Version](#)[Interactive Discussion](#)

Several recent papers have focused on conditions along the Iceland shelf over the last 1000 to 2000 cal yr BP using a variety of proxies (Andrews et al., 2009a; Axford et al., 2011; Jennings et al., 2001; Knudsen et al., 2004; Masse et al., 2008; Sicre et al., 2008), but there has been little effort to compare the proxies across Denmark Strait (Jennings et al., 2002; Andresen et al., 2013). The goal of this paper is to present proxy data from four areas, namely East Greenland fjord mouths, East Greenland mid-shelf, NW/N Iceland, and SW Iceland (Fig. 1), and assess whether there is any evidence for changes in NAO-I conditions over the last 2000 cal yr BP. In particular, changes in the strength and extent of the Irminger Current (IC), and the East Iceland Current (EIC) (Fig. 2), modulate changes in nutrient availability and in the presence/absence of drift ice. SW Iceland is always under the influence of the IC and is only very rarely affected by sea ice. SW Iceland shelf sediments contain little or no quartz, no presence of the sea-ice biomarker IP25 (Belt et al., 2007), and have high carbonate content (Axford et al., 2011). The opposite end member is represented by the inner NE Greenland shelf, which is always influenced by the East Greenland Current (EGC) and extensive landfast and drifting sea ice (Reeh, 2004). During the Little Ice Age the Northeast Greenland fjords may have been covered by permanent landfast sea ice (Funder et al., 2011; Reeh et al., 2001), thus restricting both sea ice and iceberg drift and probably curtailing the bloom of sea-ice diatoms (Muller et al., 2011). In such an environment, ice-rafted debris (IRD) is restricted, laminated sediments replace bioturbated mud (Dowdeswell et al., 2000; Jennings and Weiner, 1996), and marine carbonate production would be extremely limited. The IC is present within the deep cross-shelf troughs as an intermediate water mass, which under present-day conditions is being transported into the SE Greenland fjords causing retreat of tidewater glaciers (Andresen et al., 2011; Syvitski et al., 1996; Straneo et al., 2010). Hence the most sensitive area to NAO-I variability is represented by the outer E Greenland shelf and NW/N Iceland (Fig. 3) (Jennings et al., 2012; Olafsdottire et al., 2010; Andrews et al., 2009a), where drift ice can impinge on the shelf during NAO negative circulation (Fig. 2b), and thus variable IRD and IP25 proxies can be expected.

2 The oceanographic, climatic, and physical background

The present-day velocity of bottom currents through the Denmark Strait is high (Jochumsen et al., 2012) and little sediment accumulation takes place. Core-top dates are no younger than 8000 cal yr BP (Andrews and Cartee-Schoofield, 2003), thus limiting late Holocene proxy records to the adjacent shelves rather than from Denmark Strait itself.

Instrumental and observational data are available from either side of Denmark Strait for the last one or two centuries (Fig. 3). The mean annual temperature (MAT) records from opposite sides of Denmark Strait (Stykksholmur: W Iceland and Ammassalik: SE Greenland) share significant similarities with r^2 values (1895 AD to the present) of 0.65. There is a tight coupling between the land and marine temperatures as can be seen by the parallel trends in the Stykksholmur MAT and the average water column temperatures from the Siglunes hydrographic section (Olafsson, 1999) (Fig. 3), however, direct yearly correlations between the NAO index and the MAT data are low due to the complex underlying causes of the NAO (Zhang and Vallis, 2006). Positive values of the storis index (Schmith and Hanssen, 2003) indicate heavy ice years off SW Greenland, fed by the EGC, whereas incursions of sea ice onto the N Iceland coast have a longer record (Wallevik and Sigurjonsson, 1998) (Fig. 3).

Stefansson and Olafsson (1991) provided a link between Icelandic oceanography and marine environmental proxies by synthesizing nutrient data, collected on the regular hydrographic cruises, from the Iceland Marine Research Institute (Stefansson, 1968). A key argument was the importance of water stratification as a control on productivity. They computed an index of vertical mixing (IVM), the reciprocal of the water column stability, and defined IVM as: $10^{-2}[D\sigma_t/Dz]^{-1}$. Stefansson and Olafsson (1991) noted that the IVM has statistically significant positive correlations with nutrient variables. Maps of IVM values shows a tongue of high values extending northward along the W/NW Iceland shelf corresponding to the flow of the Irminger Current (Fig. 4). The contours on the IVM parallel the calcite wt% of surface sediment from the seafloor, with

NAO-like climate oscillations across Denmark Strait

J. T. Andrews and
A. E. Jennings

Title Page

Abstract

Introduction

Conclusions

References

Tables

Figures



Back

Close

Full Screen / Esc

Printer-friendly Version

Interactive Discussion



NAO-like climate oscillations across Denmark StraitJ. T. Andrews and
A. E. Jennings[Title Page](#)[Abstract](#)[Introduction](#)[Conclusions](#)[References](#)[Tables](#)[Figures](#)[⏪](#)[⏩](#)[◀](#)[▶](#)[Back](#)[Close](#)[Full Screen / Esc](#)[Printer-friendly Version](#)[Interactive Discussion](#)

a tongue of increased values heading NNE along the west coast terminating in the Dju-pall Trough, where calcite wt% exceeds 30 wt% (Fig. 4). This broad trend supports the hypothesis that calcite wt% is a measure of water stratification and temperature (Andrews et al., 2001; Mahadevan et al., 2012; Thordardottir, 1984). The insert on Fig. 4 shows the statistically significant relationship ($n = 26$, $p = 0.0002$) between water temperature and the wt% of carbonate for all sites, but excluding Djupall, which for its temperature has anomalously high carbonate values. The relationship indicates an increase in carbonate of $1.8 \pm 0.4\%$ for a 1°C increase. The temperature data specifically relate to late July 1997 (Helgadottir, 1997).

The major component of the biogenic calcite is the Coccolithophorids, which bloom along the Iceland and East Greenland margins (Balestra et al., 2004; Thordottir, 1984; Dylmer et al., 2013) – an exception is NW Iceland where foraminifera are a significant component. Icebergs may also act to disturb the water column, break down stratification and increase nutrient supply (Burton et al., 2012). Increased stratification is linked to excursions of fresh Polar/Arctic waters onto the Iceland shelf (Olafsson, 1999; Jennings et al., 2002), which in turn is associated with NAO+ conditions (Fig. 2), and thus changes in the calcite wt%, or ideally the flux, might serve as an index to changes in the NAO or the Atlantic Multidecadal Oscillation (AMOC) (Hakkinen, 1999; Mauritzen and Hakkinen, 1997; Jennings et al., 2002).

Changes in sea ice extent are considered a major climatic forcing for changes in the Holocene (Jennings et al., 2002; Smith et al., 2003; Zhong et al., 2011). Sea ice is a pervasive factor along the East Greenland margin (Melling, 2012). Sea ice Charts (www.dmi.dk/dmi/index/gronland/iskort/iskort_-_ostgronland.htm) for the last few years show a narrow band of fast-ice exists from 67°N northward and extends into the fjords, whereas offshore from this ice concentrations range from $< 9/10$ th to an ice edge, which from Dec through the spring lies close to the shelf break (Alonso-Garcia et al., 2013). In NAO+ years, drift ice is frequently transported in the EIC toward Iceland; 20th Century observations and historical sources indicate significant variability on decadal time-scales (Fig. 3c and d) (Polyakova et al., 2006).

NAO-like climate oscillations across Denmark Strait

J. T. Andrews and
A. E. Jennings

Title Page

Abstract

Introduction

Conclusions

References

Tables

Figures

⏪

⏩

◀

▶

Back

Close

Full Screen / Esc

Printer-friendly Version

Interactive Discussion

Kangerlussuaq Fjord, the Geikie Plateau, and Scoresby Sund all contain fast-flowing tidewater glaciers that contribute icebergs from their tidewater margins (Dywer, 1993; Nuttall, 1993; Seale et al., 2011). Several of the fast-flowing ice streams are buttressed by a sikussuaq, a mélange of sea ice, bergy bits, and icebergs (Mugford and Dowdeswell, 2010; Reeh, 2004; Reeh et al., 2001; Syvitski et al., 1996). Sikussuaq and landfast ice within the fjord, restrict the movement of icebergs, and consequentially impact their ability to transport and release ice-rafted debris (IRD) to the adjacent shelf. Icebergs are frequent in the area south of Scoresby Sund (Dowdeswell et al., 1992) and can cause scouring and remobilization of sediment on the sea floor (Syvitski et al., 2001). Retreat of the tidewater glaciers has been linked to the introduction of “warm” Atlantic Intermediate Water into the fjords (Andresen et al., 2011; Straneo et al., 2010; Howat et al., 2008; Joughin et al., 2008; Syvitski et al., 1996). Coarse (> 2 mm) IRD decreases rapidly seaward from the E Greenland fjords following a power law (Andrews et al., 1997) and is thus only rarely noted in late Holocene Icelandic marine sediments.

3 A working model for detecting climate change in the Denmark St region

Axford et al. (2011) compiled marine and lake climate proxies from Iceland at a 100 yr sampling resolution for 300–1900 cal yr AD. Further analysis (in our paper) of 18 variables from the 5 marine cores by Principal Component Analysis (PCA) (Davis, 1986) indicated that the 1st PC axis explained 68 % of the variance, with changes in quartz, the sea ice biomarker IP25, and $\delta^{18}\text{O}$ of foraminifera being negatively correlated with changes in calcite wt%. The scores on the 1st PC (see later) represent a 1st-order climate signal for the eastern side of Denmark Strait. This “seesaw” of proxies fits well with the schematic picture of NAO variations depicted on Fig. 2, such that with incursions of sea ice and reduction in the IC during positive GSAs, NAO- conditions would be marked by an increase in quartz off Iceland, an increase in the sea ice biomarker IP25, and a reduction in calcite production. Lamb (1979) suggested that the conditions

generated by the 1969 GSA (Dickenson et al., 1988) might serve as an appropriate analog for the Little Ice Age climate.

We employ three major proxies to capture changes in marine conditions. These are: (1) changes in sediment mineralogy, especially the variations in quartz weight% (wt%), which represents an external input to the Iceland bedrock signatures (Andrews et al., 2009b; Eiriksson et al., 2000; Moros et al., 2006a); (2) variations in IRD, defined as clasts > 2 mm or very coarse sand; and (3) variations in the calcite content. In terms of our proxies, changes in stratification would result in changes in coccolithophorid accumulation rates associated with changes in the timing of the extent and nature of the sea ice margin (Balestra et al., 2004; Giraudeau et al., 2004, 2010).

Cores, chronology, and methods

We present data from a number of cores (Table 1, Fig. 1) retrieved during cruises in 1991, 1993, 1996, 1997, and 1999 (e.g., Helgadottir, 1997; Labeyrie et al., 2003). All the radiocarbon dates on the cores have been published in INSTAAR Date Lists (Dunhill et al., 2004; Quillmann et al., 2009; Smith and Licht, 2000), apart from new dates obtained on cores HU93030-19B, MD99-2322, JM96-1210GGC, the three PO175GKC cores (Table 2), and 4 dates from B997-316PC (Jonsdottir, 2001). ^{210}Pb and ^{137}Cs measurements have been carried out on a GKC core and several box cores (Alonso-Garcia et al., 2013; Andrews et al., 2009a; Smith et al., 2002) (Table 2).

An important issue in radiocarbon-based chronologies is the value(s) for the ocean reservoir correction on either side of Denmark Strait (Eiriksson et al., 2010; Hjort, 1973; Jennings et al., 2002). The presence of well-dated tephtras in many cores enables some insights into the problem (Jennings et al., 2013), but no corrections have been determined for NW/W Iceland over the last 2000 cal yr. Our value for ΔR of 0, and usage in radiocarbon calibration programs (Reimer et al., 2002) means that our ^{14}C age calibrations may be too old. Oxcal was used to calibrate the radiocarbon dates (Blockley et al., 2007). Core lengths accumulated over the last 2000 cal yr, sediment accumulation rates (SAR), and sampling intervals are listed on Tables 1 and 2. These

NAO-like climate oscillations across Denmark Strait

J. T. Andrews and
A. E. Jennings

Title Page

Abstract

Introduction

Conclusions

References

Tables

Figures

⏪

⏩

◀

▶

Back

Close

Full Screen / Esc

Printer-friendly Version

Interactive Discussion



data show that there is the potential to reconstruct conditions across the Denmark St at multi-decadal resolution, although the impact of bioturbation is always an issue (Anderson, 2001). However, the high SARs and the preservation of discrete tephra events in several of the cores (e.g., Jennings et al., 2013) suggest only a limited impact.

Our proxies have been measured using methodologies that have been well documented in the literature. The mineralogy of the sediments has been estimated by quantitative X-ray diffraction analysis using ZnO as a calibration standard (Eberl, 2003; McCarty, 2002; Omotoso et al., 2006) on the < 2 mm sediment matrix (Andrews et al., 2010). We use the downcore variations in mineralogy to seek an understanding of changes in sediment provenance using an Excel macro program called SedUnMix (Andrews and Eberl, 2012). Calcite and total carbonate (as there is little or no dolomite in the samples calcite ~ carbonate%) has been measured by XRD, coulometer, or by a WHOI carbonate device-comparisons of duplicate runs indicated excellent reproducibility between the different methods. In addition to sediment samples, large IRD clasts from the JM96-1210, GKC#9, and MD99-2262 (W Iceland) cores were pulverized and ground for qXRD in order to gain further insights into sediment source mineralogy. We have taken surface samples and cores from Kangerlussuaq Fjord in 1988, 1991, and 1993 (Mienert et al., 1992; Smith and Andrews, 2000; Syvitski et al., 1996), and surface samples were also taken on the *Sir James Clark Ross* cruise JR106 in 2004. It is appropriate at this stage to note that we are often dealing with percentage data, i.e., the non-clay and clay mineral weight% (wt%) sum to 100, and this poses problems in the interpretation of changes in percentage data (Aitchison, 1986).

Clasts > 2 mm were counted on X-radiographs in 2 cm depth increments (Andrews et al., 1997; Grobe, 1987; Pirrung et al., 2002). If such data are not available we use the percentage of sand-size grains in fractions < 2 mm or > 250 μ m as an index of iceberg rafting (Jennings et al., 2011), as sea ice derived from the Arctic Ocean contains predominantly silt and clay-size particles (Dethleff, 2005; Dethleff and Kuhlmann, 2010).

NAO-like climate oscillations across Denmark Strait

J. T. Andrews and
A. E. Jennings

[Title Page](#)[Abstract](#)[Introduction](#)[Conclusions](#)[References](#)[Tables](#)[Figures](#)[⏪](#)[⏩](#)[◀](#)[▶](#)[Back](#)[Close](#)[Full Screen / Esc](#)[Printer-friendly Version](#)[Interactive Discussion](#)

4 Results and interpretation

We present data from our study areas moving from the heavily glaciated fjords of E Greenland to the ice-free waters off SW Iceland. The impact of low-frequency NAO-I variations will vary along such a transect. The least affected areas will be the ice-free SW Iceland shelf, whereas the impact on the numerous E Greenland tidewater glaciers will be very significant if the NAO+ mode is sufficiently persistent to increase the flow of Atlantic Water into the fjords (Straneo et al., 2010; Andresen et al., 2012). This would increase glacier calving and IRD deposition in the fjords and inner shelf, but the increased rate of iceberg melting would limit the area over which IRD could be delivered.

4.1 Fjords, East Greenland

4.1.1 Geikie Plateau

Core JM96-1210GGC was taken near the mouth of Nansen Fjord close to the site of BS1191-K14 (Jennings and Weiner, 1996) (Fig. 1). The bedrock geology map (www.geus.dk) shows Archaean gneisses and granites overlain in places by K-TK shales, siltstones and sandstones, which are turn capped by basalt. Local IRD basalt clasts contain some quartz from crustal contamination. The Christian IV Gletscher at the head of the fjord has an estimated calving rate of $\sim 2 \text{ km}^3 \text{ yr}^{-1}$ (Andrews et al., 1994). CTD casts in 1996 indicated that water temperatures below 150 m were between 1.5° and 2°C , thus ensuring rapid melt of icebergs exiting the fjord. The depth/age model is based on 3 ^{14}C dates (Table 2) and ^{210}Pb and ^{137}Cs measurements (Smith et al., 2002); the sediment accumulation rate (SAR) averaged 0.11 cm yr^{-1} . The average sampling interval over the last 2000 cal yr is $20 \text{ yr sample}^{-1}$.

The grain-size spectra (Fig. 5a) is multi-modal with peaks in the $> 2 \text{ mm}$ fraction, which are clearly ice-rafted (Fig. 5b). Sand content is relatively uniform (Fig. 5b) but the largest fraction is medium to coarse silt reflecting glacial abrasion. The calcite wt%

CPD

9, 3871–3917, 2013

NAO-like climate oscillations across Denmark Strait

J. T. Andrews and
A. E. Jennings

Title Page

Abstract

Introduction

Conclusions

References

Tables

Figures

⏪

⏩

◀

▶

Back

Close

Full Screen / Esc

Printer-friendly Version

Interactive Discussion

NAO-like climate oscillations across Denmark Strait

J. T. Andrews and
A. E. Jennings

Title Page

Abstract

Introduction

Conclusions

References

Tables

Figures

⏪

⏩

◀

▶

Back

Close

Full Screen / Esc

Printer-friendly Version

Interactive Discussion

is at the detection limit; an interpretation is complicated by the presence of marine mudstones within the drainage (Larsen et al., 1999; Jennings et al., 2002). To express the qXRD data in terms of provenance, the minerals have been grouped (e.g., Na and Ca- feldspars grouped into plagioclase) and smoothed with a 5-point moving average.

The 2000 yr record of changes in mineralogy in part reflects changes in grain-size with a fining-upward trend being mimicked by a decrease in quartz. The plagioclase and quartz percentages tend to parallel each other and both show significant oscillations. In Fig. 6d we have used SedUnMix to estimate the downcore variability of the mineral signal by comparing each sample with the uppermost 5 samples in the core (i.e., the recent sediment sources) (Andrews and Eberl, 2011, 2012). As might be expected there is not a great deal of variation (red line, Fig. 5d) and the average absolute difference in mineralogy between the observed and calculated wt% is generally < 1 wt% (Fig. 5d, blue line).

When compared with the foraminifera-based climate divisions from the near by core BS1191-K14 (Table 1) (Jennings and Weiner, 1996) (Fig. 5, bottom panel) there are some associations and the Little Ice Age (LIA) appears to be represented by an increase in quartz and plagioclase but larger peaks occur between the LIA and the Medieval Warm Period (MWP). Wanner et al. (2011) suggested two cold intervals within the last 2000 cal yr BP at 500 yr and 1500 yr – the latter event (the so-called Dark Ages cold event) is marked by maximum wt% values of quartz and plagioclase and relatively large deviations in mineralogy.

4.1.2 Kangerlussuaq Fjord

The bedrock geology of Kangerlussuaq Fjord is complex (map sheet 13, 1 : 250 000 Greenland Geological Survey) and differs from Nansen Fjord in that outcrops of KT sediments and flood basalts are rare. Archean gneisses and granites dominate the bedrock geology. A massive felsic Tertiary intrusion outcrops on the south flank of the fjord (Fig. 1). Sediments from Kangerlussuaq Fjord are enriched in quartz and the K-

and Na-feldspars, but depleted in the Ca-feldspars, pyroxene, maghemite, saponite, and Fe-chlorite relative to Nansen Fjord.

The lithofacies, grain-size and IRD (> 2 mm) records from cores within Kangerlussuaq Fjord were presented earlier (Smith, 1997; Smith and Andrews, 2000). The sediments consisted predominantly of weakly stratified fine-grained muds with IRD (Smith, 1997, p. 78). Here we reproduce the IRD records and new qXRD data for cores BS1191-K7 and K8 (Table 1, Figs. 1 and 7), which although poorly dated (Table 2) do cover the last 800 yr, and include the local Little Ice Age (Geirsdottir et al., 2000). The SAR for K8 is 0.26 and 0.11 cm yr^{-1} for K7. The IRD records (Fig. 6) show pulses of ice-rafting with a notable absence ~ 1500 AD. In K7 a low persistent level of IRD is evident in the last 400 yr whereas in K8, nearer to the fjord mouth, no IRD > 2 mm was captured in the core for the last 300 yr. In K7 higher levels of quartz in the < 2 mm fraction appear to coincide with reduced IRD.

4.2 Kangerlussuaq Trough

High-resolution seismic surveys of the inner Kangerlussuaq Trough in 1993 and 1996 (Jennings et al., 2011, 2002, 2006) indicates that cores HU93030-019B and MD99-2322 (henceforth 19B/2322) (Fig. 1) are stratigraphically from the same site. The calibrated dates from the base of 19B box core and the 2322 Calypso core overlap (Table 2). The SAR for 19B is ~ 0.127 cm yr^{-1} and 0.148 cm yr^{-1} for 2322; 19B was processed in 1 cm intervals and 2322 averaged 2 cm intervals. The average resolution is one sample every 15 yr.

The sediment in the upper 2000 yr of 19B/2322 is generally silty clay with scattered IRD clasts and coarse sand (Jennings et al., 2011). The mineralogy of the < 2 mm fraction was determined by qXRD and the sampling for the last ~ 2000 cal yr was increased from an earlier study (Andrews et al., 2010). The inner Kangerlussuaq Trough is positioned to receive sediment from the Kangerlussuaq Fjord tidewater glaciers, and from the numerous tidewater glaciers that drain the Geikie Plateau. A key question is whether the sediment in Kangerlussuaq Trough is being contributed from the erosion

CPD

9, 3871–3917, 2013

NAO-like climate oscillations across Denmark Strait

J. T. Andrews and
A. E. Jennings

Title Page

Abstract

Introduction

Conclusions

References

Tables

Figures

⏪

⏩

◀

▶

Back

Close

Full Screen / Esc

Printer-friendly Version

Interactive Discussion



NAO-like climate oscillations across Denmark Strait

J. T. Andrews and
A. E. Jennings

Title Page

Abstract

Introduction

Conclusions

References

Tables

Figures

⏪

⏩

◀

▶

Back

Close

Full Screen / Esc

Printer-friendly Version

Interactive Discussion

of felsic rocks (e.g., granites, gneisses, felsic intrusions – Kangerlussuaq Fjord), from erosion of the complex basalt outcrop (Geikie Plateau), or some fraction from each? A 5-point moving average has been applied to the data to enhance the signal (Burroughs, 2003).

The SedUnMix program allows for 5 samples per end member or source with a maximum of six sources; details of the program are given in Andrews and Eberl (2012). We initially evaluate downcore variability in sediment composition by comparing the downcore sediment samples with the 5 uppermost samples from 019B and computing the standard error based on 10 iterations of the SedUnMix algorithm (Andrews et al., 2012, 2013). The results indicate that in the last ~ 500 yr there has been little variation in sediment provenance, although commencing ca. 1500 AD there were consistent deviations (Fig. 7a).

The next question is whether we can assign sediment sources and unmix the sediment composition? We represent the Tertiary basalt source by the qXRD mineralogy from JM96-1210 and the Kangerlussuaq Fjord source by surface samples from core BS1191-K7 (Alonso-Garcia et al., 2013; Andrews et al., 2010). However, we note that interpretation is complicated by the closed array problem (Chayes, 1971) so that as the contribution from one source increases there is a tendency ($r = -0.58$) for the other source to decrease (Fig. 7). The average difference between the measured and calculated wt% for each of the non-clay and clay minerals used in the analyses is 3.3 ± 0.3 wt%, indicating a reasonably good fit between the measured (sources) and calculated (19B/2322) mineral wt %s. The results (Fig. 7b) indicate that Geikie Plateau has been the dominant sediment source with an average of 45 ± 7 % of the sediment being assigned to a Nansen Fjord-like source, compared to 22 ± 11 % from Kangerlussuaq Fjord. There is thus an unaccounted source(s) averaging ~ 33 % of the composition (Fig. 7c). However, our estimates also include a calculation of the standard deviations of the estimate based on iterations of the 2×5 matrix (Andrews and Eberl, 2012); thus we could account for nearly 100 % of the sediment composition by specific sample selection from the two source areas. Additional sediment sources would

NAO-like climate oscillations across Denmark Strait

J. T. Andrews and
A. E. Jennings

[Title Page](#)

[Abstract](#)

[Introduction](#)

[Conclusions](#)

[References](#)

[Tables](#)

[Figures](#)

[⏪](#)

[⏩](#)

[◀](#)

[▶](#)

[Back](#)

[Close](#)

[Full Screen / Esc](#)

[Printer-friendly Version](#)

[Interactive Discussion](#)

certainly be derived from icebergs that originated in Scoresby Sund and Northeast Greenland and sediment entrained in sea ice from the Arctic Ocean (Andrews, 2011; Bigg, 1999; Darby and Bischof, 2004; Darby et al., 2011; Seale et al., 2011). Over the last 100 yr the relative contribution from the Geikie Plateau has increased, whereas the data indicate a decrease in the more felsic source(s) associated with Kangerlussuaq Fjord (Fig. 7b).

The last 2000 yr covers several important climate events, such as the Medieval Warm Period (MWP), Little Ice Age (LIA), and the Current Warm Period (not labeled) (Fig. 8) although their time boundaries are probably not globally synchronous (Hughes and Diaz, 1994; Broecker, 2001; Mann et al., 2009). Figure 8a graphs the PC 1 scores from the Iceland marine data set (Axford et al., 2011) versus the calcite wt% from 19B/2322. The 19B/2322 calcite data parallel the lower-resolution PC scores, suggesting a broad, parallel climate evolution on both sides of Denmark Strait, in keeping with the climate data for the last 100–150 yr (Fig. 3). We use a regime shift indicator (RSI) algorithm (Rodionov, 2004, 2006) to ascertain whether the records show marked regime shifts in our proxies (Fig. 8b and d) and whether these shifts have any correspondence with the ^{14}C probability distributions of vegetation kill/ice growth on Baffin Island, Canada (Miller et al., 2012) (Fig. 8b). Such a comparison is appropriate, as the changes in the small Baffin Island ice caps have been linked to intervals of persistent volcanism which force variations in the extent of sea ice (Miller et al., 2012). The peaks in the ^{14}C probability distribution reflect intervals when vegetation was able to grow on the high uplands of Baffin Island, and the absence of dates represents intervals of persistent ice/snow cover (Andrews et al., 1976; Ives, 1962; Williams, 1978). Note that Lowell et al. (2013) implied a different climatic scenario for dates on dead vegetation being uncovered to the north of our sites (Istorvet Ice Cap $\sim 71^\circ\text{N}$) – an interpretation that is difficult to understand (Miller et al., 2013). Particularly noteworthy is the calcite minimum $\sim 1600\text{AD}$ which coincides with the abrupt reduction of dates on vegetation emerging from the retreating ice patches (Anderson et al., 2008; Falconer, 1966), al-

though lagging the vegetation reduction by ~ 100 yr, whereas the older interval, which terminated ~ 1000 AD, occurred ca 150 yr prior to the regime shift in calcite (Fig. 8b).

The quartz wt% data has a trend opposite to the calcite wt% (Fig. 8c) with an increase starting ca. 800 AD and continuing until 1500 AD when there is a decrease, although there are sharp peaks, which project above the regime shift mean values (Fig. 8c).

4.3 N/NW Iceland: none to variable sea ice, variable IRD

Based on its location (Fig. 2) then this area should be sensitive to low-frequency NAO-I multi-decadal/-century changes, as indeed was demonstrated by Axford et al. (2011) and Andresen et al. (2005). X-radiographs from the numerous cores from the N Iceland shelf indicate that IRD clasts > 2 mm are extremely rare or absent, but quartz is present in the < 2 mm sediment fraction (Moros et al., 2006). The quartz and quartz + k-feldspar data from 16 cores from the Iceland shelf have been presented at 250- and 100 yr resolution (Andrews, 2009; Andrews et al., 2009b). We focus on three high-resolution records that span the last 2000 cal yr, namely MD99-2263 (Andrews et al., 2009a; Olafsdottir et al., 2010), MD99-2269 (Andrews et al., 2003; Moros et al., 2006; Stoner et al., 2007), and B997-316PC3 (Jonsdottir, 2001). Olafsdottir et al. (2010, p. 116) noted, "The characteristics for the LIA in both cores (MD99-2256, SW Iceland and MD99-2263/2264) are high amplitude fluctuations, not at all a stable continuous cold bottom water period." The three cores span an oceanographic gradient (Smith et al., 2005; Stefansson, 1962) with MD99-2263 dominated by the NIIC, whereas B997-316PC3 (Jonsdottir, 2001) occurs much further offshore at or near the North Iceland Marine Front (Fig. 4) (Belkin et al., 2009) with bottom water temperatures $< 0^{\circ}\text{C}$. This variation in oceanographic setting raises the question of differences in the ocean reservoir correction during the late Holocene (Eiriksson et al., 2010); however, the radiocarbon-based interpolated age at 105.5 cm in B997-316PC3 is 1433 AD, compared to an age for the Veidovotn tephra of 1477 AD, identified at this depth (Jonsdottir, 2001; Larsen, 2005).

NAO-like climate oscillations across Denmark Strait

J. T. Andrews and
A. E. Jennings

Title Page

Abstract

Introduction

Conclusions

References

Tables

Figures

⏪

⏩

◀

▶

Back

Close

Full Screen / Esc

Printer-friendly Version

Interactive Discussion



NAO-like climate oscillations across Denmark Strait

J. T. Andrews and
A. E. Jennings

[Title Page](#)[Abstract](#)[Introduction](#)[Conclusions](#)[References](#)[Tables](#)[Figures](#)[⏪](#)[⏩](#)[◀](#)[▶](#)[Back](#)[Close](#)[Full Screen / Esc](#)[Printer-friendly Version](#)[Interactive Discussion](#)

The calcite data (Fig. 9a) show large differences in wt% with very high values in MD99-2263 and lower values to the north and east, consistent with the suggestion of Stefansson and Olafsson (1991) and the distribution of calcite in Icelandic seafloor sediments (Fig. 4). There are considerable variations in wt% at each site but with no great consistency in either the trends or individual peaks, although there is a marked decrease during the Iceland LIA (Geirsdottir et al., 2009; Grove, 2001; Ogilvie and Jónsson, 2001). In detail, using the highest resolution cores (Fig. 9c), there is a remarkable similarity between the calcite wt% data from N Iceland (316PC3) and our data from the Greenland side of Denmark Strait (Fig. 8) over the last 2000 yr as well as on the full Holocene time-span (Stoner et al., 2007).

The quartz wt% time-series (Fig. 9b) have values < wt 2 % for 2263, partly because of the very high calcite values at this site, compared to 2269 and 316PC3. The results for 2263 and 316PC show highly variable inputs over the last 1100 cal yr superimposed on a general increase toward the present day. This variability is in keeping with IRD deposition, which by its very nature is spatially and temporally “noisy.”

4.4 SW Iceland: no sea ice and no IRD

The clockwise pattern of drift ice around the Iceland coast implies that the SW shelf only occasionally is impacted by drift ice (Divine and Dick, 2006), although Jennings et al. (2001) suggested that Polar Water may have impacted the area. In previous papers it was shown that quartz and the sea ice biomarker IP₂₅ have values close to the detection limits (Andrews, 2009; Axford et al., 2011). Calcite is a major component of the sediment and reflects significant biological productivity (Stefansson and Olafsson, 1991).

Studies of MD99-2258 (box core) and the MD99-2259 piston core indicates a hiatus between ~ 1600–500 AD (Table 2). However, nearby core B997-347 (Fig. 1, Table 1) has an estimated age of the top-most sample ~ 1480 AD. A combined plot of calcite wt% from 2258 and 347 (Fig. 9d) shows sharp oscillations in calcite over the last 2000 yr. When compared with data from Kangerlussuaq Trough (Fig. 9d) the SW

Iceland record leads by several decades. It is unclear whether this is an artifact of dating uncertainties or not, especially with the regional issue of the ocean reservoir correction (Sejrup et al., 2010). The quartz wt% in 347PC is close to zero, and it only rises above 1 % in 2258 on one occasion (~ 1790 AD) (Fig. 9e).

5 Discussion

The common thread in our sites is provided by the variations in flow of the Irminger Current (IC) (Fig. 2), which is a surface current off SW Iceland, a surface or intermediate current off N Iceland, and an intermediate water mass in the deep troughs and fjords of E and SE Greenland-variations in the latter are a prime cause for changes in the tidewater glacier dynamics of the area (Syvitski et al., 1996; Andresen et al., 2011). Variations in the IC are in turn linked to the dynamics of the subpolar gyre, with a center just to the south over the Irminger Basin (Sarafanov, 2009), and its link to the NAO. We have amassed an array of data from the area of Denmark Strait that extend over the last 2000 yr. Our data cover an environmental gradient from pervasive sea ice coverage and significant iceberg numbers to little or no drift ice, and from the presence of Polar Water at the surface to surface Atlantic Water – a difference on average of ~ 10 °C or more in surface temperature. Over the last 100+ yr instrumental and observational records indicate a close coupling (Fig. 3) of climate and drift ice variations on either side of the strait. On longer, Holocene time scales, the agreement in the details of the calcite content across Denmark Strait in MD99-2269 and -2322 (Fig. 1) is remarkable (Stoner et al., 2007). The broad level of agreement is also seen in the comparison of the calcite wt% data between 19B/2322 and 316, and 2258/347 (Fig. 9c and d). This is perhaps surprising as the net product of calcite is influenced by dissolution, which certainly can be a factor along the East Greenland margin (Jennings et al., 2012).

A number of Arctic/North Atlantic climate reconstructions have been recently developed, including a 2000 yr estimate of Arctic summer temperatures (Kaufman et al., 2009) (Fig. 11a), 1400 yr Arctic temperature (Shi, 2012; Shi et al., 2012) and Arctic

NAO-like climate oscillations across Denmark Strait

J. T. Andrews and
A. E. Jennings

Title Page

Abstract

Introduction

Conclusions

References

Tables

Figures

⏪

⏩

◀

▶

Back

Close

Full Screen / Esc

Printer-friendly Version

Interactive Discussion



NAO-like climate oscillations across Denmark Strait

J. T. Andrews and
A. E. Jennings

Title Page

Abstract

Introduction

Conclusions

References

Tables

Figures

⏪

⏩

◀

▶

Back

Close

Full Screen / Esc

Printer-friendly Version

Interactive Discussion

sea ice records (Kinnard et al., 2011), and a 700 yr long AMOC reconstruction (Mann et al., 2009; Gray et al., 2004) (Fig. 11c). There is a strong association in the trend between the Arctic summer temperature time-series and the 19B/2322 calcite wt% data (Fig. 10a) – the Current Warm Period is well expressed (Fig. 8a). On their initial chronologies the calcite and quartz data and the AMOC record (Fig. 10b) are only poorly correlated ($r = 0.05$). However, the fit between the AMOC values and calcite can easily be improved using AnalySeries (Paillard et al., 1996) (7 tie-points) to improve the association to $r = 0.76$ (not shown). The correction to the calcite time-series was such that an increase in the ocean reservoir correction from 0 to $30 \pm \text{yr}$ would accommodate much of the suggested correction. Such a correction is certainly reasonable (Sejrup et al., 2010) but difficult to validate. The adjusted quartz time-series had no obvious association with the AMOC time-series.

These data raise the question as to whether there are any significant periodicities in either the 19B/2322 calcite or quartz data? The data were re-sampled at an even 15 yr interval using AnalySeries (Paillard et al., 1996)-little information was lost in this process as the correlations between the original and evenly spaced series was 0.95 and 0.9 for calcite and quartz respectively. Trends in the data were detected by using Singular Spectra Analysis (SSA) (Ghil et al., 2002). Significant trends were detected for both data sets (Figs. 8d and 11a) accounting for 73 % (calcite) and 53 % (quartz) of the variance. The trends were removed and the residuals (Fig. 11b) were processed using MTM (Mann and Lees, 1996) and significant multidecadal periodicities ($\geq 95\%$ CI) were detected at 72 and 56 yr in calcite and 94 and 65 yr for quartz. Multi-century significant periodicities were detected at 142 yr (calcite) and 123 yr (quartz). The multi-decadal oscillations are similar in length to variations in the AMOC (Delworth et al., 1997; Knudsen et al., 2011; Mann et al., 2009; Zhang et al., 2007). The SSA trend for calcite and the AMOC over the last 1300 yr are similar (Fig. 11c) but the calcite leads the AMOC by about 100 yr. We are unclear whether this is real, or possibly associated with uncertainties in the local ocean reservoir correction.

NAO-like climate oscillations across Denmark Strait

J. T. Andrews and
A. E. Jennings

[Title Page](#)[Abstract](#)[Introduction](#)[Conclusions](#)[References](#)[Tables](#)[Figures](#)[⏪](#)[⏩](#)[◀](#)[▶](#)[Back](#)[Close](#)[Full Screen / Esc](#)[Printer-friendly Version](#)[Interactive Discussion](#)

The link between the NAO and ocean circulation and conditions in the Denmark Strait region (Figs. 2 and 3) suggests it is important to see if our records (Figs. 5–9) have any obvious association with a NAO-I reconstruction (Cook et al., 2002; Trouet et al., 2009; Kinnard et al., 2011). Departures from the mean for the period 1990–1100 AD were derived for the calcite and quartz wt% data for 19B/2322 and compared with the derived NAO index (Fig. 12). Between 1100 AD and 1450 a prevailing low frequency NAO positive index is associated with predominantly positive departures from the means for both quartz and calcite. In the next 550 yr the NAO and the calcite departures are very variable, with ~ 15 oscillations in that interval, although they both become positive in the 20th century (Fig. 12). In contrast the supply of quartz as a fraction of the sediment steadily decreased.

6 Conclusions

Commencing in 2002 (Jennings et al., 2002) several papers have evaluated a variety of high-resolution marine proxies from off Iceland and adjacent areas and associated them with known climatic modes, such as the NAO and AMOC (Andrews et al., 2003; Jiang et al., 2005; Knudsen et al., 2011; Miettinen et al., 2011; Alonso-Garcia et al., 2013). The underlying controls on our proxies are the variations in the landfast and drift ice and the extent and presence of Atlantic Water transported via the Irminger Current (Fig. 2). Despite potential problems associated with dissolution the calcite content, cores on both sides of Denmark Strait share a considerable number of features in common (Figs. 8–12) – this is true not only for the last 2000 cal yr BP but for the Holocene (Andrews et al., 2001; Jennings et al., 2002; Stoner et al., 2007). On the 2000 yr time-scale the calcite data show a similar trend to the reconstructed Arctic summer temperatures (Kaufman et al., 2009) (Fig. 10a) and have an association with the AMOC (Fig. 10b). However, abrupt changes in calcite wt% are temporally associated (Fig. 8b) with the expansion of snowfields and small ice caps on Baffin Island (Miller et al., 2012). Zhong et al. (2010) modeled the climatic impact of a sustained

interval of volcanism in the late 13th and middle 15th centuries and indicated that such a history could result in an expansion of sea ice in the Arctic Ocean and its marginal seas.

We conclude by noting that there is an “uncertainty principle” to the chronologies of high-resolution Holocene marine records and the delimitation of episodes such as the MWP and LIA (Fig. 8). The uncertainty is based on the \pm errors on the radiocarbon dates, the calibration to sidereal years, changes in the rate of sediment accumulation, and the ocean reservoir correction. Thus we have no way of knowing whether the offset between the calcite data and AMOC is a true lag (Fig. 11c) or associated with dating uncertainties. The problem could be addressed by a very high density of radiocarbon dates (Sejrurp et al., 2010) but this is not practical (because of the cost) in most situations.

Acknowledgement. Support for involvement in cruises in 1991, 1993, 1996, 1997, and 1999 was provided to J. T. Andrews and A. E. Jennings by grants from the National Science Foundation. This paper is a contribution to grants NSF-OCE-0823535 and ANS-1107761. Mike Mann and Anne de Vernal kindly provided data from published climate reconstructions. The data generated for this paper will be submitted to the NOAA Paleoclimate Data Base for archiving <http://www.ncdc.noaa.gov/paleo/paleo.html>.

References

- Aitchison, J.: The Statistical Analysis of Compositional Data, Chapman and Hall, London, 1986.
- Alonso-Garcia, M., Andrews, J. T., Belt, S. T., Cabedo-Sanz, P., Darby, D., and Jaeger, J.: A multi-proxy and multi-decadal record (to AD 1850) of environmental conditions on the East Greenland shelf ($\sim 66^\circ$ N), Holocene, in press, 2013.
- Anderson, D. M.: Attenuation of millennial-scale events by bioturbation in marine sediments, *Paleoceanography*, 16, 352–357, 2001.
- Anderson, R. K., Miller, G. H., Briner, J. P., Lifton, N. A., and DeVogel, S. B.: A millennial perspective on Arctic warming from ^{14}C in quartz and plants emerging from beneath ice caps, *Geophys. Res. Lett.*, 35, L01502, doi:10.1029/2007GL032057, 2008.

NAO-like climate oscillations across Denmark Strait

J. T. Andrews and
A. E. Jennings

Title Page

Abstract

Introduction

Conclusions

References

Tables

Figures

⏪

⏩

⏴

⏵

Back

Close

Full Screen / Esc

Printer-friendly Version

Interactive Discussion



NAO-like climate oscillations across Denmark Strait

J. T. Andrews and
A. E. Jennings

Title Page

Abstract

Introduction

Conclusions

References

Tables

Figures

⏪

⏩

◀

▶

Back

Close

Full Screen / Esc

Printer-friendly Version

Interactive Discussion

Andresen, C. S., Bond, G., Kuijpers, A., Knutz, P., and Bjorck, S.: Holocene climate variability at multi-decadal time-scales detected by sedimentological indicators in a shelf core NW off Iceland, *Mar. Geol.*, 214, 323–338, 2005.

Andresen, C. S., McCarthy, D. J., Dylmer, C. V., Seidenkrantz, M. S., Kuijpers, A., and Lloyd, J. M.: Interaction between subsurface ocean waters and calving of the Jakobshavn Isbrae during the late Holocene, *Holocene*, 21, 211–224, 2011.

Andresen, C. S., Hansen, M. J., Seidenkrantz, M. S., Jennings, A. E., Knudsen, M. F., Norgaard-Pedersen, N., Larsen, N. K., Kuijpers, A., and Pearce, C.: Mid- to late-Holocene oceanographic variability on the southeast Greenland shelf, *Holocene*, 23, 167–178, 2013.

Andrews, J. T.: Seeking a Holocene drift ice proxy: non-clay mineral variations from the SW to N-central Iceland shelf: trends, regime shifts, and periodicities, *J. Quaternary Sci.*, 24, 664–676, 2009.

Andrews, J. T.: Unravelling sediment transport along glaciated margins (the northwestern Nordic Seas) using quantitative X-ray diffraction of bulk (<2 mm) sediment, in: *Sediment Transport*, InTech, edited by: Bhuiyan, A. F., 225–248, 2011.

Andrews, J. T. and Cartee-Schoofield, S.: Late Quaternary lithofacies, provenance, and depositional environments (~ 12 to 30 cal ka), north and south of the Denmark Strait, *Mar. Geol.*, 199, 65–82, 2003.

Andrews, J. T. and Eberl, D. D.: Determination of sediment provenance by unmixing the mineralogy of source-area sediments: the “SedUnMix” program, *Mar. Geol.*, 291, 24–33, 2012.

Andrews, J. T., Davis, P. T., and Wright, C.: Little ice age permanent snowcover in the eastern Canadian Arctic: extent mapped from LANDSAT-1 satellite imagery, *Geogr. Ann. A*, 58, 71–81, 1976.

Andrews, J. T., Milliman, J. D., Jennings, A. E., Rynes, N., and Dwyer, J.: Sediment thicknesses and Holocene glacial marine sedimentation rates in three East Greenland fjords (ca. 68° N), *J. Geol.*, 102, 669–683, 1994.

Andrews, J. T., Smith, L. M., Preston, R., Cooper, T., and Jennings, A. E.: Spatial and temporal patterns of iceberg rafting (IRD) along the East Greenland margin, ca. 68° N, over the last 14 cal ka, *J. Quaternary Sci.*, 12, 1–13, 1997.

Andrews, J. T., Helgadóttir, G., Geirsdóttir, A., and Jennings, A. E.: Multicentury-scale records of carbonate (hydrographic?) variability on the N, Iceland margin over the last 5000 yr, *Quaternary Res.*, 56, 199–206, 2001.

**NAO-like climate
oscillations across
Denmark Strait**J. T. Andrews and
A. E. Jennings[Title Page](#)[Abstract](#)[Introduction](#)[Conclusions](#)[References](#)[Tables](#)[Figures](#)[⏪](#)[⏩](#)[◀](#)[▶](#)[Back](#)[Close](#)[Full Screen / Esc](#)[Printer-friendly Version](#)[Interactive Discussion](#)

Andrews, J. T., Hardardottir, J., Stoner, J. S., Mann, M. E., Kristjansdottir, G. B., and Koc, N.: Decadal to millennial-scale periodicities in North Iceland shelf sediments over the last 12 000 calyr: long-term North Atlantic oceanographic variability and Solar forcing, *Earth Planet. Sc. Lett.*, 210, 453–465, 2003.

Andrews, J. T., Belt, S. T., Olafsdottir, S., Masse, G., and Vare, L.: Sea ice and marine climate variability for NW Iceland/Denmark Strait over the last 2000 calyr BP, *Holocene*, 19, 775–784, 2009a.

Andrews, J. T., Darby, D. A., Eberl, D. D., Jennings, A. E., Moros, M., and Ogilvie, A.: A robust multi-site Holocene history of drift ice off northern Iceland: implications for North Atlantic climate, *Holocene*, 19, 71–78, 2009b.

Andrews, J. T., Jennings, A. E., Coleman, C. G., and Eberl, D.: Holocene variations in mineral and grain-size composition along the East Greenland glaciated margin (ca. 67–70° N): local versus long-distant sediment transport, *Quaternary Sci. Rev.*, 29, 2619–2632, 2010.

Andrews, J. T., Barber, D. C., Jennings, A. E., Eberl, D. D., Maclean, B., Kirby, M. E., and Stoner, J. S.: Varying sediment sources (Hudson Strait, Cumberland Sound, Baffin Bay) to the NW Labrador Sea slope between and during Heinrich events 0 to 4, *J. Quaternary Sci.*, 27, 475–484, 2012.

Andrews, J. T., Bigg, G. R., and Wilton, D. J.: Holocene sediment transport from the glaciated margin of East/Northeast Greenland (67–80° N) to the N Iceland shelves: detecting and modeling changing sediment sources, *Quaternary Sci. Rev.*, in press, 2013.

Axford, Y., Andresen, C., Andrews, J. T., Belt, S. T., Geirsdottir, A., Masse, G., Miller, G. H., Olafsdottir, S., and Vare, L. L.: Do paleoclimate proxies agree?, statistical comparison of climate and sea-ice reconstructions from Icelandic marine and lake sediments, 300–1900 AD, *J. Quaternary Sci.*, 26, 645–656, 2011.

Balestra, B., Ziveri, P., Monechi, S., and Troelstra, S.: Coccolithophorids from the Southeast Greenland Margin (northern North Atlantic): production, ecology and the surface sediment record, *Micropaleontology*, 50, 23–34, 2004.

Belkin, I. M., Levitus, S., Antonov, J., and Malmberg, S.-A.: “Great Salinity Anomalies” in the North Atlantic, *Prog. Oceanogr.*, 41, 1–68, 1998.

Belkin, I. M., Cornillon, P. C., and Sherman, K.: Fronts in large marine ecosystems, *Prog. Oceanogr.*, 81, 223–236, 2009.

Belt, S. T., Masse, G., Rowland, S. J., Poulin, M., Michel, C., and LeBlanc, B.: A novel chemical fossil of palaeo sea ice: IP25, *Org. Geochem.*, 38, 16–27, 2007.

NAO-like climate oscillations across Denmark Strait

J. T. Andrews and
A. E. Jennings

[Title Page](#)

[Abstract](#)

[Introduction](#)

[Conclusions](#)

[References](#)

[Tables](#)

[Figures](#)

[⏪](#)

[⏩](#)

[◀](#)

[▶](#)

[Back](#)

[Close](#)

[Full Screen / Esc](#)

[Printer-friendly Version](#)

[Interactive Discussion](#)

- Bigg, G. R.: An estimate of the flux of iceberg calving from Greenland, *Arct. Antarct. Alp. Res.*, 31, 174–178, 1999.
- Blindheim, J., Toresen, R., and Loeng, H.: Fremtidige klimatiske endringer og betydningen for fiskeressursene, Future climatic changes and their influence on fishing resources, *Environment of the Sea Havets miljø: Norwegian Institute of Marine Research*, 73–78, 2001.
- Blockley, S. P. E., Blaauw, M., Ramsey, C. B., and van der Plicht, J.: Building and testing age models for radiocarbon dates in lateglacial and early Holocene sediments, *Quaternary Sci. Rev.*, 26, 1915–1926, 2007.
- Broecker, W. S.: Was the Medieval Warm Period global?, *Science*, 291, 1497–1499, 2001.
- Burroughs, W. J.: *Weather Cycles Real or Imaginary*, 2nd Edn., Cambridge University Press, Cambridge, UK, 2003.
- Burton, J. C., Amundson, J. M., Abbot, D. S., Boghosian, A., Cathles, L. M., Correa-Legisos, S., Darnell, K. N., Guttenberg, N., Holland, D. M., and MacAyeal, D. R.: Laboratory investigations of iceberg capsize dynamics, energy dissipation and tsunamigenesis, *J. Geophys. Res.-Earth*, 117, F01007, doi:10.1029/2011jf002055, 2012.
- Chayes, F.: *Ratio Correlation*, University of Chicago Press, Chicago, 1971.
- Cook, E. R., D'Arrigo, R. D., and Mann, M. E.: A well-verified, multiproxy reconstruction of the winter North Atlantic Oscillation index since AD 1400, *J. Climate*, 15, 1754–1764, 2002.
- Darby, D. A. and Bischof, J.: A Holocene record of changing Arctic Ocean ice drift analogous to the effects of the Arctic Oscillation, *Palaeoceanography*, 19, PA1027, doi:10.1029/2003PA000961, 2004.
- Darby, D. A., Myers, W. B., Jakobsson, M., and Rigor, I.: Modern dirty sea ice characteristics and sources: the role of anchor ice, *J. Geophys. Res.*, 116, C09008, doi:10.1029/2010JC006675, 2011.
- Davis, J. C.: *Statistics and Data Analysis in Geology*, John Wiley & Sons, New York, 1986.
- Dawson, A. G., Hickey, K., Holt, T., Elliot, L., Dawson, S., Foster, I. D. L., Wadhams, P., Jonsdottir, I., Wilkinson, J., McKenna, J., Davis, N. R., and Smith, D. E.: Complex North Atlantic Oscillation (NAO) index signal of historic North Atlantic storm-track changes, *Holocene*, 12, 363–369, 2002.
- Delworth, T. L., Manabe, S., and Stouffer, R. J.: Multidecadal climate variability in the Greenland Sea and surrounding regions: a coupled model simulation, *Geophys. Res. Lett.*, 24, 257–260, 1997.

**NAO-like climate
oscillations across
Denmark Strait**J. T. Andrews and
A. E. Jennings[Title Page](#)[Abstract](#)[Introduction](#)[Conclusions](#)[References](#)[Tables](#)[Figures](#)[⏪](#)[⏩](#)[◀](#)[▶](#)[Back](#)[Close](#)[Full Screen / Esc](#)[Printer-friendly Version](#)[Interactive Discussion](#)

- Dethleff, D.: Entrainment and export of Laptev Sea ice sediments, Siberian Arctic (vol 110, art no C0: 2005), *J. Geophys. Res.-Oceans*, 110, 7009, doi:10.1029/2005jc003294, 2005.
- Dethleff, D. and Kuhlmann, G.: Fram Strait sea-ice sediment provenance based on silt and clay compositions identify Siberian and Kara and Laptev seas as main source regions, *Polar Res.*, 29, 265–282, 2010.
- Dickson, R. R., Meincke, J., Malmberg, S., and Lee, A.: The “Great Salinity Anomaly” in the northern North Atlantic 1968–1982, *Prog. Oceanogr.*, 20, 103–151, 1988.
- Dickson, R. R., Osborn, T. J., Hurrell, J. W., Meincke, J., Blindheim, J., Adlandsvik, B., Vinje, T., Alekseev, G., and Maslowski, W.: The Arctic Ocean response to the North Atlantic oscillation, *J. Climate*, 13, 2671–2696, 2000.
- Divine, D. V. and Dick, C.: Historical variability of the sea ice edge position in the Nordic Seas, *J. Geophys. Res.*, 111, C01001, doi:10.1029/2004JC002851, 2006.
- Dowdeswell, J. A., Whittington, R. J., and Hodgkins, R.: The sizes, frequencies, and freeboards of East Greenland icebergs observed using ship radar and sextant, *J. Geophys. Res.*, 97, 3515–3528, 1992.
- Dowdeswell, J. A., Whittington, R. J., Jennings, A. E., Andrews, J. T., Mackensen, A., and Marienfeld, P.: An origin for laminated glacial marine sediments through sea-ice build-up and suppressed iceberg rafting, *Sedimentology*, 47, 557–576, 2000.
- Dunhill, G., Andrews, J. T., and Kristjansdottir, G. B.: Radiocarbon Date List X: Baffin Bay, Baffin Island, Iceland, Labrador, and the northern North Atlantic, Occasional Paper No. 56, Institute of Arctic and Alpine Research, University of Colorado, Boulder, 77 pp., 2004.
- Dylmer, C. V., Giraudeau, J., and Husum, K.: The coccolithophores *Emiliania huxleyi* and *Coccolithus pelagicus*: extant populations from the Norwegian-Greenland Sea and Fram Strait, *Biogeosciences*, in press, 2013.
- Dywer, J. L.: Monitoring characteristics of glaciation in the Kangerdlugssuaq Fjord region, East Greenland, using digital LANDSAT MSS and TM Data, University of Colorado, Boulder, 1993.
- Dwyer, J. L.: Mapping tide-water glacier dynamics in East Greenland using Landsat data, *J. Glaciol.*, 41, 584–596, 1995.
- Eberl, D. D.: User guide to RockJock: a program for determining quantitative mineralogy from X-ray diffraction data, Open File Report 03-78, United States Geological Survey, Washington, DC, 40 pp., 2003.

**NAO-like climate
oscillations across
Denmark Strait**J. T. Andrews and
A. E. Jennings

[Title Page](#)[Abstract](#)[Introduction](#)[Conclusions](#)[References](#)[Tables](#)[Figures](#)[⏪](#)[⏩](#)[◀](#)[▶](#)[Back](#)[Close](#)[Full Screen / Esc](#)[Printer-friendly Version](#)[Interactive Discussion](#)

- Eiriksson, J., Knudsen, K. L., Hafliðason, H., and Henriksen, P.: Late-glacial and Holocene paleoceanography of the North Iceland Shelf, *J. Quaternary Sci.*, 15, 23–42, 2000.
- Eiriksson, J., Knudsen, K. L., Larsen, G., Olsen, J., Heinemeier, J., Bartels-Jonsdóttir, H. B., Jiang, H., Ran, L. H., and Simonarson, L. A.: Coupling of palaeoceanographic shifts and changes in marine reservoir ages off North Iceland through the last millennium, *Palaeogeogr. Palaeoclimatol.*, 302, 95–108, 2010.
- Falconer, G.: Preservation of vegetation and patterned ground under a thin ice body in northern Baffin Island, *N. W. T. Geograph. Bull.*, 8, 194–200, 1966.
- Funder, S., Gooße, H., Jepsen, H., Kaas, E., Kjaer, K. H., Korsgaard, N. J., Larsen, N. K., Linderson, H., Lysa, A., Møller, P., Olsen, J., and Willerslev, E.: A 10 000 yr record of Arctic Ocean sea-ice variability-view from the beach, *Science*, 333, 747–750, 2011.
- Geirsdóttir, A., Hardardóttir, J., and Andrews, J. T.: Late Holocene terrestrial geology of Miki and I. C. Jacobsen Fjords, East Greenland, *Holocene*, 10, 125–134, 2000.
- Geirsdóttir, A., Miller, G. H., Axford, Y., and Ólafsdóttir, S.: Holocene and latest Pleistocene climate and glacier fluctuations in Iceland, *Quaternary Sci. Rev.*, 28, 2107–2118, 2009.
- Ghil, M., Allen, M. R., Dettinger, M. D., Ide, K., Kondrashov, D., Mann, M. E., Roberston, A. W., Saunders, A., Tian, Y., Varadi, F., and Yiou, P.: Advanced spectral methods for climatic time series, *Rev. Geophys.*, 40, 1003, doi:10.1029/2000RG000092, 2002.
- Giraudeau, J., Jennings, A. E., and Andrews, J. T.: Timing and mechanisms of surface and intermediate water circulation changes in the Nordic Sea over the last 10 000 cal yr: a view from the North Iceland shelf, *Quaternary Sci. Rev.*, 23, 2127–2139, 2004.
- Giraudeau, J., Solignac, S., Moros, M., Andrews, J. T., and Jansen, E.: Millennial-scale variability in Atlantic water advection to the Nordic Seas derived from coccolith contraction records, *Quaternary Sci. Rev.*, 29, 1276–1287, 2010.
- Gray, S. T., Graumlich, L. J., Betancourt, J. L., and Pederson, G. T.: A tree-ring based reconstruction of the Atlantic Multidecadal Oscillation since 1567 AD, *Geophys. Res. Lett.*, 31, L12205, doi:10.1029/2004gl019932, 2004.
- Grobe, H.: A simple method for the determination of ice-rafted debris in sediment cores, *Polarforschung*, 57, 123–126, 1987.
- Grove, J. M.: The initiation of the “Little Ice Age” in regions round the North Atlantic, *Climatic Change*, 48, 53–82, 2001.
- Hakkinen, S.: A simulation of thermohaline effects of a great salinity anomaly, *J. Climate*, 12, 1781–1795, 1999.

NAO-like climate oscillations across Denmark Strait

J. T. Andrews and
A. E. Jennings

Title Page

Abstract

Introduction

Conclusions

References

Tables

Figures

⏪

⏩

◀

▶

Back

Close

Full Screen / Esc

Printer-friendly Version

Interactive Discussion

- Helgadottir, G.: Paleoclimate (0 to > 14 ka) of W and NW Iceland: an Iceland/USA contribution to P. A. L. E., Cruise Report B9–97, Marine Research Institute of Iceland, Reykjavik, 1997.
- Hjort, C.: A sea correction for East Greenland, *Geologiska Foreningen i Stockholm Forhandlingar*, 95, 132–134, 1973.
- 5 Howat, I. M., Joughin, I., Fahnestock, M., Smith, B. E., and Scambos, T. A.: Synchronous retreat and acceleration of southeast Greenland outlet glaciers 2000–06: ice dynamics and coupling to climate, *J. Glaciol.*, 54, 646–660, 2008.
- Hughes, M. K. and Diaz, H. F.: Was there a “Medieval Warm Period”, and if so, where and when?, in: *Medieval Warm Period*, edited by: Hughes, M. K. and Diaz, H. F., Kluwer, Boston,
- 10 109–142, 1994.
- Hurrell, J. W., Kushnir, Y., Ottersen, G., and Vibeck, M.: The North Atlantic Oscillation, *Climatic Significance and Environmental Impact*, Geophysical Monographs 134, American Geophysical Union, Washington, D.C., 279 pp., 2003.
- Ives, J. D.: Indications of recent extensive glacierization in north-central Baffin Island, N. W. T.,
- 15 *J. Glaciol.*, 4, 197–205, 1962.
- Jennings, A. E. and Weiner, N. J.: Environmental change on eastern Greenland during the last 1300 yr: Evidence from Foraminifera and Lithofacies in Nansen Fjord, 68° N, Holocene, 6, 179–191, 1996.
- Jennings, A. E., Hardardottir, J., Stein, R., Ogilvie, A. E. J., and Jonsdottir, I.: Oceanographic change and terrestrial human impacts in a post 1400 AD record from the southwest Iceland Shelf, *Climatic Change*, 48, 83–100, 2001.
- 20 Jennings, A. E., Knudsen, K. L., Hald, M., Hansen, C. V., and Andrews, J. T.: A mid-Holocene shift in Arctic sea ice variability on the East Greenland shelf, *Holocene*, 12, 49–58, 2002a.
- Jennings, A. E., Gronvold, K., Hilberman, R., Smith, M., and Hald, M.: High resolution study of Icelandic tephra in the Kangerlussuaq Trough, southeast Greenland, during the last deglaciation, *J. Quaternary Sci.*, 17, 747–757, 2002b.
- 25 Jennings, A. E., Hald, M., Smith, L. M., and Andrews, J. T.: Freshwater forcing from the Greenland Ice Sheet during the younger dryas: evidence from southeastern Greenland shelf cores, *Quaternary Sci. Rev.*, 25, 282–298, 2006.
- 30 Jennings, A. E., Andrews, J. T., and Wilson, L.: Holocene environmental evolution of the SE Greenland Shelf north and south of the Denmark Strait: Irminger and East Greenland current interactions, *Quaternary Sci. Rev.*, 30, 980–998, 2011.

NAO-like climate oscillations across Denmark Strait

J. T. Andrews and
A. E. Jennings

Title Page

Abstract

Introduction

Conclusions

References

Tables

Figures

⏪

⏩

◀

▶

Back

Close

Full Screen / Esc

Printer-friendly Version

Interactive Discussion

- Jiang, H., Eiriksson, J., Schulz, M., Knudsen, K.-L., and Seidenkrantz, M.-S.: Evidence for solar forcing of sea-surface temperature on the North Icelandic Shelf during the late Holocene, *Geology*, 33, 73–76, 2005.
- Jochumsen, K., Quadfasel, D., Valdimarsson, H., and Jonsson, S.: Variability of the Denmark Strait overflow: moored time series from 1996–2011, *J. Geophys. Res.-Oceans*, 117, C12003, doi:10.1029/2012jc008244, 2012.
- Jonsdottir, H. B. B.: Late Holocene climatic changes on the North Iceland shelf, Department of Marine Geology, University of Aarhus, Denmark, Aarhus, 124 pp. plus appendixes, 2001.
- Joughin, I., Howat, I., Alley, R. B., Ekstrom, G., Fahnestock, M., Moon, T., Nettles, M., Truffer, M., and Tsai, V. C.: Ice-front variation and tidewater behavior on Helheim and Kangerdlugssuaq Glaciers, Greenland, *J. Geophys. Res.-Earth*, 113, F01004, doi:10.1029/2007JF000837, 2008.
- Kinnard, C., Zdanowicz, C. M., Fisher, D. A., Isaksson, E., de Vernal, A., and Thompson, L. G.: Reconstructed changes in Arctic sea ice over the past 1450 yr, *Nature*, 479, 509–512, doi:10.1038/nature10581, 2011.
- Knudsen, K. L., Eirikson, J., Jansen, E., Jiang, H., Rytter, F., and Gudmundsdottir, E. R.: Paleooceanographic changes off North Iceland through the last 1200 yr: foraminifera, stable isotopes, diatoms and ice rafted debris, *Quaternary Sci. Rev.*, 23, 2231–2246, 2004.
- Knudsen, M. F., Seidenkrantz, M. S., Jacobsen, B. H., and Kuijpers, A.: Tracking the Atlantic Multidecadal Oscillation through the last 8000 yr, *Nat. Commun.*, 2, 178, doi:10.1038/ncomms1186, 2011.
- Koch, L.: The East Greenland Ice, *Meddelelser om Gronland*, 130, 346 pp., 1945.
- Kwok, R. and Rothrock, D. A.: Variability of Fram Strait ice flux and North Atlantic Oscillation, *J. Geophys. Res.-Oceans*, 104, 5177, doi:10.1016/j.epsl.2008, 1999.
- Labeyrie, L., Jansen, E., and Cortijo, E.: Les rapports de campagnes a la mer MD114/IMAGES V, Institut Polaire Francais Paul-Emile Victor, Brest, 2003.
- Lamb, H. H.: Climatic variations and changes in the wind and ocean circulation: the Little Ice Age in the northeast Atlantic, *Quaternary Res.*, 11, 1–20, 1979.
- Larsen, G.: Explosive volcanism in Iceland: three examples of hydromagmatic basaltic eruptions on long volcanic fissures within the past 1200 yr, *Geophys. Res. Abstr.*, 7, 10158, doi:10.1016/j.epsl.2008, 2005.

NAO-like climate oscillations across Denmark Strait

J. T. Andrews and
A. E. Jennings

[Title Page](#)

[Abstract](#)

[Introduction](#)

[Conclusions](#)

[References](#)

[Tables](#)

[Figures](#)

[⏪](#)

[⏩](#)

[◀](#)

[▶](#)

[Back](#)

[Close](#)

[Full Screen / Esc](#)

[Printer-friendly Version](#)

[Interactive Discussion](#)

- Larsen, M., Hamberg, L., Olausson, S., Norgaard-Pedersen, N., and Stemmerik, L.: Basin evolution in southern East Greenland: an outcrop analog for Cretaceous-Paleogene basins on the North Atlantic volcanic margins, *AAPG Bull.*, 83, 1236–1261, 1999.
- Lowell, T. V., Hall, B. L., Kelly, M. A., Bennike, O., Lusas, A. R., Honsaker, W., Smith, C. A., Levy, L. B., Travis, S., and Denton, G. H.: Late Holocene expansion of Istorvet ice cap, Liverpool Land, east Greenland, *Quaternary Sci. Rev.*, 63, 128–140, 2013.
- Mahadevan, A., D'Asaro, E., Lee, C., and Perry, M. J.: Eddy-driven stratification initiates North Atlantic spring phytoplankton blooms, *Science*, 337, 54–58, 2012.
- Mann, M. E. and Lees, J. M.: Robust estimation of background noise and signal detection in climatic time series, *Climatic Change*, 33, 409–445, 1996.
- Mann, M. E., Zhang, Z. H., Rutherford, S., Bradley, R. S., Hughes, M. K., Shindell, D., Ammann, C., Faluvegi, G., and Ni, F. B.: Global signatures and dynamical origins of the Little Ice Age and medieval climate anomaly, *Science*, 326, 1256–1260, 2009.
- Masse, G., Rowland, S. J., Sicre, M.-A., Jacob, J., and Belt, S. T.: Abrupt climate changes for Iceland during the last millenium: evidence from high resolution sea ice reconstructions, *Earth Planet. Sc. Lett.*, 269, 564–568, doi:10.1016/j.epsl.2008, 2008.
- Mauritzen, C. and Hakkinen, S.: Influence of sea ice on the thermohaline circulation in the Arctic-North Atlantic Ocean, *Geophys. Res. Lett.*, 24, 3257–3260, 1997.
- McCarty, D. K.: Quantitative mineral analysis of clay-bearing mixtures: the “Reynolds Cup” contest, *Newsletter No. 27*, International Union of Crystallography, Chester, England, 12–16, 2002.
- Melling, H.: Sea-ice observations: advances and challenges, in: *Arctic Climate Change, The ACSYS Decade and Beyond*, edited by: Lemke, P. and Jacoobi, H.-W., Springer, New York, 27–116, 2012.
- Mienert, J., Andrews, J. T., and Milliman, J. D.: The East Greenland Continental Margin (65° N) since the last deglaciation: changes in sea floor properties and ocean circulation, *Mar. Geol.*, 106, 217–238, 1992.
- Miettinen, A., Divine, D., Koc, N., Godtliebsen, F., and Hall, I. R.: Multicentennial variability of the sea surface temperature gradient across the subpolar North Atlantic over the last 2.8 kyr, *J. Climate*, 25, 4205–4219, 2012.
- Miller, G. H., Geirsdottir, A., Zhong, Y. F., Larsen, D. J., Otto-Bliesner, B. L., Holland, M. M., Bailey, D. A., Refsnider, K. A., Lehman, S. J., Southon, J. R., Anderson, C., Bjornsson, H., and Thordarson, T.: Abrupt onset of the Little Ice Age triggered by volcanism and sustained

NAO-like climate oscillations across Denmark StraitJ. T. Andrews and
A. E. Jennings[Title Page](#)[Abstract](#)[Introduction](#)[Conclusions](#)[References](#)[Tables](#)[Figures](#)[⏪](#)[⏩](#)[◀](#)[▶](#)[Back](#)[Close](#)[Full Screen / Esc](#)[Printer-friendly Version](#)[Interactive Discussion](#)

by sea-ice/ocean feedbacks, *Geophys. Res. Lett.*, 39, L02708, doi:10.1029/2011gl050168, 2012.

5 Miller, G. H., Briner, J. P., Refsnider, K. A., Lehman, S., Geirsdóttir, A., Larsen, D. J., and Southon, J. R.: Substantial agreement on the timing and magnitude of Late Holocene ice cap expansion between East Greenland and the eastern Canadian Arctic: a commentary on Lowell et al., *Quaternary Sci. Rev.*, in press, 2013.

Moros, M., Andrews, J. T., Eberl, D. D., and Jansen, E.: Holocene history of drift ice in the northern North Atlantic: evidence for different spatial and temporal modes, *Palaeoceanography*, 21, PA2017, doi:10.1029/2005PA001214, 2006.

10 Mugford, R. I. and Dowdeswell, J. A.: Modeling iceberg-rafted sedimentation in high-latitude fjord environments, *J. Geophys. Res.-Earth*, 115, F03024, doi:10.1029/2009jf001564, 2010.

Muller, J., Wagner, A., Fahl, K., Stein, R., Prange, M., and Lohmann, G.: Towards quantitative sea ice reconstructions in the northern North Atlantic: a combined biomarker and numerical modelling approach, *Earth Planet. Sc. Lett.*, 306, 137–148, 2011.

15 Nuttall, A.-M.: Glaciological Investigations in East Greenland using Digital LANDSAT imagery, MA thesis, University of Cambridge, Cambridge, UK, 107 pp., 1993.

Ogilvie, A. E. J.: Fisheries, climate and sea ice in Iceland: an historical perspective, in: *Marine Resources and Human Societies in the North Atlantic Since 1500*, edited by: Vickers, D., Institute of Social and Economic Research, Memorial University, St Johns, 69–87, 1997.

20 Ogilvie, A. E. J. and Jónsson, T.: “Little Ice Age” research: a perspective from Iceland, *Climatic Change*, 48, 9–52, 2001.

Ogilvie, A. E. J., Barlow, L. K., and Jennings, A. E.: North Atlantic climate ca. AD 1000: millennial reflections on the Viking Discoveries of Iceland, Greenland and North America, *Weather*, 55, 34–45, 2000.

25 Olafsdottir, S., Jennings, A. E., Geirsdottir, A., Andrews, J., and Miller, G. H.: Holocene variability of the North Atlantic Irminger current on the south- and northwest shelf of Iceland, *Mar. Micropaleontol.*, 77, 101–118, 2010.

Olafsson, J.: Connections between oceanic conditions off N-Iceland, Lake Myvatn temperature, regional wind direction variability and the North Atlantic Oscillation, *Rit Fiskideildar*, 16, 41–57, 1999.

30 Omotoso, O., McCarty, D. K., Hillier, S., and Kleeberg, R.: Some successful approaches to quantitative mineral analysis as revealed by the 3rd Reynolds Cup contest, *Clay. Clay Miner.*, 54, 748–760, 2006.

NAO-like climate oscillations across Denmark Strait

J. T. Andrews and
A. E. Jennings

[Title Page](#)

[Abstract](#)

[Introduction](#)

[Conclusions](#)

[References](#)

[Tables](#)

[Figures](#)

[⏪](#)

[⏩](#)

[◀](#)

[▶](#)

[Back](#)

[Close](#)

[Full Screen / Esc](#)

[Printer-friendly Version](#)

[Interactive Discussion](#)

- Paillard, D., Labeyrie, L., and Yiou, P.: Macintosh program performs time-series analysis, *EOS*, 77, 379, 1996.
- Parkinson, C. L.: Recent trend reversals in Arctic sea ice extents: possible connection to the North Atlantic oscillation, *Polar Geogr.*, 24, 1–12, 2000.
- 5 Pirrung, M., Futterer, D., Grobe, H., Matthiessen, J., and Niessen, F.: Magnetic susceptibility and ice-rafted debris in surface sediments of the Nordic Seas: implications for isotope stage 3 oscillations, *Geo-Mar. Lett.*, 22, 1–11, 2002.
- Polyakova, E. I., Journel, A. G., Polyakov, I. V., and Bhatt, U. S.: Changing relationship between the North Atlantic Oscillation and key North Atlantic climate parameters, *Geophys. Res. Lett.*, 33, L03711, doi:10.1029/2005gl024573, 2006.
- 10 Quillmann, U., Andrews, J. T., and Jennings, A. E.: Radiocarbon Date List XI: East Greenland shelf, West Greenland Shelf, Labrador Sea, Baffin Island shelf, Baffin Bay, Nares Strait, and Southwest to Northwest Icelandic shelf, Occasional Paper No. 59, INSTAAR, University of Colorado, Boulder, USA, 68 pp., 2009.
- 15 Reeh, N.: Holocene climate and fjord glaciations in Northeast Greenland: implications for IRD deposition in the North Atlantic, *Sediment. Geol.*, 165, 333–342, 2004.
- Reeh, N., Thomsen, H. H., Higgins, A. K., and Weidick, A.: Sea ice and the stability of north and northeast Greenland floating glaciers, in: *Annals of Glaciology*, Vol. 33, edited by: Jeffries, M. O. and Eicken, H., International Glaciological Society, 474–480, 2001.
- 20 Reimer, P. J., McCormac, F. G., Moore, J., McCormick, F., and Murray, E. V.: Marine radiocarbon reservoir corrections for the mid- to late Holocene in the eastern subpolar North Atlantic, *Holocene*, 12, 129–136, 2002.
- Rodionov, S. N.: A sequential algorithm for testing climate regime shifts, *Geophys. Res. Lett.*, 31, L09204, doi:10.1029/2004GL019448, 2004.
- 25 Rodionov, S. N.: Use of prewhitening in climate regime shift detection, *Geophys. Res. Lett.*, 33, 025901, doi:10.1029/2006GL025904, 2006.
- Rudels, B., Anderson, L., Eriksson, P., Fahrbach, E., Jakobsson, M., Jones, P., Melling, H., Prinsenberg, S., Schauer, U., and Yao, T.: Observations in the Ocean, in: *Arctic Climate Change, The ACSYS Decade and Beyond*, edited by: Lemke, P. and Jacobi, H.-W., Springer, 117–198, 2012.
- 30 Sarafanov, A.: On the effect of the North Atlantic Oscillation on temperature and salinity of the subpolar North Atlantic intermediate and deep waters, *Ices J. Mar. Sci.*, 66, 1448–1454, 2009.

**NAO-like climate
oscillations across
Denmark Strait**J. T. Andrews and
A. E. Jennings[Title Page](#)[Abstract](#)[Introduction](#)[Conclusions](#)[References](#)[Tables](#)[Figures](#)[⏪](#)[⏩](#)[◀](#)[▶](#)[Back](#)[Close](#)[Full Screen / Esc](#)[Printer-friendly Version](#)[Interactive Discussion](#)

Schmith, T. and Hanssen, C.: Fram Strait ice export during the nineteenth and twentieth centuries reconstructed from a multiyear sea ice index from southwestern Greenland, *J. Climate*, 16, 2782–2791, 2003.

Seale, A., Christoffersen, P., Mugford, R. I., and O'Leary, M.: Ocean forcing of the Greenland Ice Sheet: calving fronts and patterns of retreat identified by automatic satellite monitoring of eastern outlet glaciers, *J. Geophys. Res.-Earth*, 116, F03013, doi:10.1029/2010jf001847, 2011.

Sejrup, H. P., Lehman, S. J., Hafliðason, H., Noone, D., Muscheler, R., Berstad, I. M., and Andrews, J. T.: Response of Norwegian Sea temperature to solar forcing since 1000 AD, *J. Geophys. Res.-Oceans*, 115, C12034, doi:10.1029/2010jc006264, 2010.

Shi, F.: Arctic 1400 yr multiproxy summer temperature reconstruction, IGBP PAGES/World Data Center for Paleoclimatology Data Contribution Series # 2012-151, NOAA/NCDC Paleoclimatology Program, Boulder CO, USA, 2012.

Shi, F., Yang, B., F. C. Ljungqvist, F. C., and Yang, F.: Multi-proxy reconstruction of Arctic summer temperatures over the past 1400 yr, *Clim. Res.*, 54, 113–128, 2012.

Sicre, M.-A., Jacob, J., Ezat, U., Rouse, S., Kissel, C., Yiou, P., Eiriksson, J., Knudsen, K.-L., Jansen, E., and Turon, J.-L.: Decadal variability of sea surface temperatures off North Iceland over the last 2000 yr, *Earth Planet. Sc. Lett.*, 268, 137–142, 2008.

Smith, L. M.: Late Quaternary glacial marine sedimentation in the Kangerlussuaq Region, East Greenland, 68° N, University of Colorado, Boulder, 190 pp., 1997.

Smith, L. M. and Andrews, J. T.: Sediment characteristics in iceberg dominated fjords, Kangerlussuaq region, East Greenland, *Sediment. Geol.*, 130, 11–25, 2000.

Smith, L. M. and Licht, K. J.: Radiocarbon Date List IX: Antarctica, Arctic Ocean, and the Northern North Atlantic, INSTAAR Occasional paper No. 54, University of Colorado, Boulder, CO, 138 pp., 2000.

Smith, L. M., Alexander, C., and Jennings, A. E.: Accumulation in East Greenland Fjords and on the continental shelves adjacent to the Denmark Strait over the last century based on ²¹⁰Pb geochronology, *Arctic*, 55, 109–122, 2002.

Smith, L. M., Miller, G. H., Otto-Bliesner, B., and Shin, S.-I.: Sensitivity of the Northern Hemisphere Climate System to extreme changes in Arctic sea ice, *Quaternary Sci. Rev.*, 22, 645–658, 2003.

Smith, L. M., Andrews, J. T., Castaneda, I. S., Kristjansdottir, G. B., Jennings, A. E., and Sveinbjornsdottir, A. E.: Temperature reconstructions for SW and N Iceland waters over the last

NAO-like climate oscillations across Denmark StraitJ. T. Andrews and
A. E. Jennings[Title Page](#)[Abstract](#)[Introduction](#)[Conclusions](#)[References](#)[Tables](#)[Figures](#)[⏪](#)[⏩](#)[◀](#)[▶](#)[Back](#)[Close](#)[Full Screen / Esc](#)[Printer-friendly Version](#)[Interactive Discussion](#)

10 000 cal yr BP based on $\delta^{18}\text{O}$ records from planktic and benthic Foraminifera, *Quaternary Sci. Rev.*, 24, 1723–1740, 2005.

Stefansson, U.: North Icelandic Waters, *Rit Fiskideildar III*. Bind, 3, 269 pp., 1962.

Stefansson, U.: Dissolved nutrients, oxygen, and water masses in northern Irminger Sea, *Deep-Sea Res.*, 15, 541–555, 1968.

Stefansson, U. and Olafsson, J.: Nutrients and fertility of Icelandic waters, *Rit Fiskideildar XII*, 1–56, 1991.

Stoner, J. S., Jennings, A. E., Kristjansdottir, G. B., Andrews, J. T., Dunhill, G., and Hardardottir, J.: A paleomagnetic approach toward refining Holocene radiocarbon based chronostratigraphies: Paleoceanographic records from North Iceland (MD99-2269) and East Greenland (MD99-2322) margins, *Palaeoceanography*, 22, PA1209, doi:10.1029/2006PA001285, 2007.

Straneo, F., Hamilton, G. S., Sutherland, D. A., Stearns, L. A., Davidson, F., Hammill, M. O., Stenson, G. B., and Rosing-Asvid, A.: Rapid circulation of warm subtropical waters in a major glacial fjord in East Greenland, *Nat. Geosci.*, 3, 182–186, 2010.

Syvitski, J. P. M., Andrews, J. T., and Dowdeswell, J. A.: Sediment deposition in an iceberg-dominated glacial marine environment, East Greenland: basin fill implications, *Global Planet. Change*, 12, 251–270, 1996.

Syvitski, J. P. M., Stein, A., Andrews, J. T., and Milliman, J. D.: Icebergs and seafloor of the East Greenland (Kangerlussuaq) continental margin, *Arct. Antarct. Alp. Res.*, 33, 52–61, 2001.

Thordardottir, T.: Primary Production North of Iceland in relation to Water Masses in May–June 1970–1980, *Council for the Exploration of the Sea*, C.M. 1984/L20, 1–17, 1984.

Trouet, V., Esper, J., Graham, N. E., Baker, A., Scourse, J. D., and Frank, D. C.: Persistent positive North Atlantic Oscillation mode dominated the Medieval Climate Anomaly, *Science*, 324, 78–80, 2009.

van Loon, H. and Rogers, J. C.: The seesaw in winter temperatures between Greenland and northern Europe, part I: general description, *Mon. Weather Rev.*, 106, 296–310, 1978.

Wallevik, J. E. and Sigurjonsson, H.: The Koch index: formulation, corrections and extension, *Icelandic Meteorological Office Report*, Reykjavik, Iceland, 1998.

Wanner, H., Solomina, O., Grosjean, M., Ritz, S. P., and Jetel, M.: Structure and origin of Holocene cold events, *Quaternary Sci. Rev.*, 30, 3109–3123, 2011.

Williams, L. D.: The Little Ice Age glaciation level on Baffin Island, Arctic Canada, *Palaeogeogr. Palaeoclimatol.*, 25, 199–207, 1978.

**NAO-like climate
oscillations across
Denmark Strait**J. T. Andrews and
A. E. Jennings

[Title Page](#)[Abstract](#)[Introduction](#)[Conclusions](#)[References](#)[Tables](#)[Figures](#)[⏪](#)[⏩](#)[◀](#)[▶](#)[Back](#)[Close](#)[Full Screen / Esc](#)[Printer-friendly Version](#)[Interactive Discussion](#)

Zhang, J. L., Steele, M., Rothrock, A. D., and Lindsay, R. W.: Increasing exchanges at Greenland–Scotland Ridge and their links with the North Atlantic Oscillation and Arctic sea ice, *Geophys. Res. Lett.*, 31, L09307, doi:10.1029/2003GL019304, 2004.

Zhang, R. and Vallis, G. K.: Impact of great salinity anomalies on the low-frequency variability of the North Atlantic climate, *J. Climate*, 19, 470–482, 2006.

Zhang, R., Delworth, T. L., and Held, I. M.: Can the Atlantic Ocean drive the observed multidecadal variability in Northern Hemisphere mean temperature?, *Geophys. Res. Lett.*, 34, 022007, doi:10.1029/2006GL028683, 2007.

Zhong, Y., Miller, G. H., Otto-Bliesner, B. L., Holland, M. M., Bailey, D. A., Schneider, D. P., and Geirsdottir, A.: Centennial-scale climate change from decadal-paced explosive volcanism: a coupled sea ice-ocean mechanism, *Clim. Dynam.*, 37, 2373–2387, 2011.

NAO-like climate oscillations across Denmark Strait

J. T. Andrews and
A. E. Jennings

Title Page

Abstract

Introduction

Conclusions

References

Tables

Figures

⏪

⏩

◀

▶

Back

Close

Full Screen / Esc

Printer-friendly Version

Interactive Discussion

Table 1. Core Locations (see Fig. 1).

	Core type	Length cm 2 cal ka BP	Long.	Lat.	Water depth m	Pb210	SAR mmyr ⁻¹	Sampling resolution
E Greenland								
JM96-1210	GC	240	-29.60	68.20	452	yes	1	10 yr
BS1191-K14	GC	> 162	-29.60	68.19	459	no	1.2	
BS1191-K7	GC	> 241	-32.10	68.26	862		3.2	~ 15 yr
BS1191-K8	GC	> 234	-31.86	68.13	872		2.6	15 yr
MD99-2322	PC	230	-30.9	66.8	714	no	1.56	17 yr
HU93-019B	BC	48.5 cm	-30.80	67.10	713	yes	1.94	5 yr
PO175GKC#9	GKC	20	-32.00	66.20	313	yes	0.63	16 yr
NW/N Iceland								
B997-316	PC & SGC	269 & 20	-18.80	66.70	658	no	2.47	20 yr
MD99-2269	PC	410	-20.85	66.63	365	no	2.03	20 yr
MD99-2263	BC	45.5	-24.20	66.70	235	yes		
SW Iceland								
B997-347	PC	34	-24.2	63.2	321	no	0.17	100 yr
MD99-2258	BC	24	-24.4	64	355	yes	0.62	15 yr
BC	Box core							
GC and GKC	gravity core							
PC	piston core							
SGC	short gravity core							

Table 2. Radiocarbon and Pb and Cs data.

Core ID	Depth cm	¹⁴ C date	Error	From	To	Median cal BP	Sigma
JM96-1210GGC	49	785	15	486	374	438	20
	149.5	1275	15	893	756	821	37
	332	3050	80	3051	2685	2833	94
BS1191-K14	50	855	60	521	305	436	58
	115.5	1440	70	1107	771	938	82
BS1191K7	262.5	1310	60	920	680	805	64
BS1191-K8	107.5	1155	56	768	550	664	53
	226	1391	55	1008	745	881	64
HU93030-019B	55.5	835	20	489	359	436	32
MD99-2322	2.3	675	30	359	145	273	42
	34	693	38	413	148	290	51
	101.5	1267	44	875	670	758	54
	150	1627	46	1254	1021	1137	59
	232.5	2415	20	2081	1908	1987	42
MD99-2263	7	595	15	288	145	253	37
	10	600	15	294	146	257	34
	25	850	15	514	445	482	17
	38.5	1620	15	1253	1127	1192	32
	45	2165	15	1824	1690	1759	35
MD99-2269	1	72	37	55	10	36	11
	42.5	680	30	413	257	328	41
	131	1010	30	646	530	589	31
	177.5	1226	25	858	688	762	41
	265.5	1693	42	1334	1159	1250	43
	412	2396	47	2150	1890	2028	67
B997-316	18.5	402	38	121		44	38
	41.75	755	35	471	305	396	46
	118	1020	40	660	525	595	36
	219.25	1090	90	830	505	655	81
	249.5	1550	120	1342	862	1102	121
MD99-2258	27.5	725	15	429	301	367	35
	31.25	1937	36	1587	1380	1482	52
	70.5	3180	20	3068	2877	2975	48
B997-347	3	770	65	504	285	403	61
	61	3110	45	3020	2760	2886	66

NAO-like climate oscillations across Denmark Strait

J. T. Andrews and
A. E. Jennings

[Title Page](#)

[Abstract](#) | [Introduction](#)

[Conclusions](#) | [References](#)

[Tables](#) | [Figures](#)

[⏪](#) | [⏩](#)

[◀](#) | [▶](#)

[Back](#) | [Close](#)

[Full Screen / Esc](#)

[Printer-friendly Version](#)

[Interactive Discussion](#)



NAO-like climate oscillations across Denmark Strait

J. T. Andrews and
A. E. Jennings

[Title Page](#)

[Abstract](#)

[Introduction](#)

[Conclusions](#)

[References](#)

[Tables](#)

[Figures](#)

[⏪](#)

[⏩](#)

[◀](#)

[▶](#)

[Back](#)

[Close](#)

[Full Screen / Esc](#)

[Printer-friendly Version](#)

[Interactive Discussion](#)

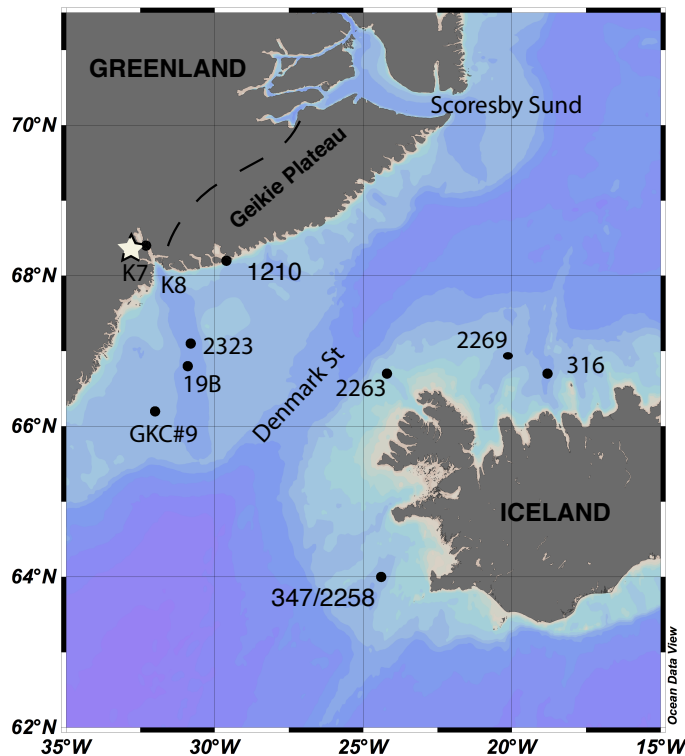


Fig. 1. Bathymetry and core locations – see Table 1 for details. The color change from light to darker blue occurs at 400 m water depth. The floor of Denmark Strait is slightly below 600 m water depth. The basalt outcrop of the Geikie Plateau is delimited by a dashed line. The large white star in Kangerlussuaq Fjord shows the location of the large Tertiary felsic intrusion.

NAO-like climate oscillations across Denmark Strait

J. T. Andrews and
A. E. Jennings

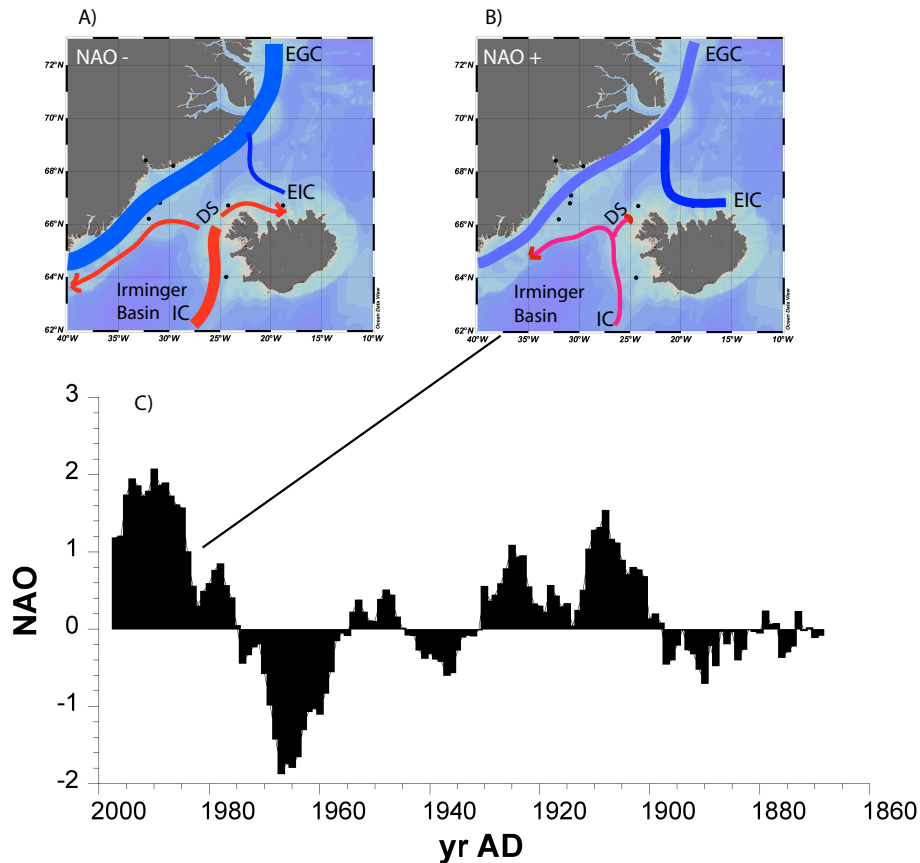


Fig. 2. (A) schematic plot of surface current currents in the area of Denmark St (DS) under the influence of a NAO+ regime, and (B) NAO – regime (after Blindheim et al., 2001). (C) Variations in the NAO winter index – data smoothed with a 10 yr running mean. EGC = East Greenland Current; EIC = East Iceland Current; IC = Irminger Current.

NAO-like climate oscillations across Denmark Strait

J. T. Andrews and
A. E. Jennings

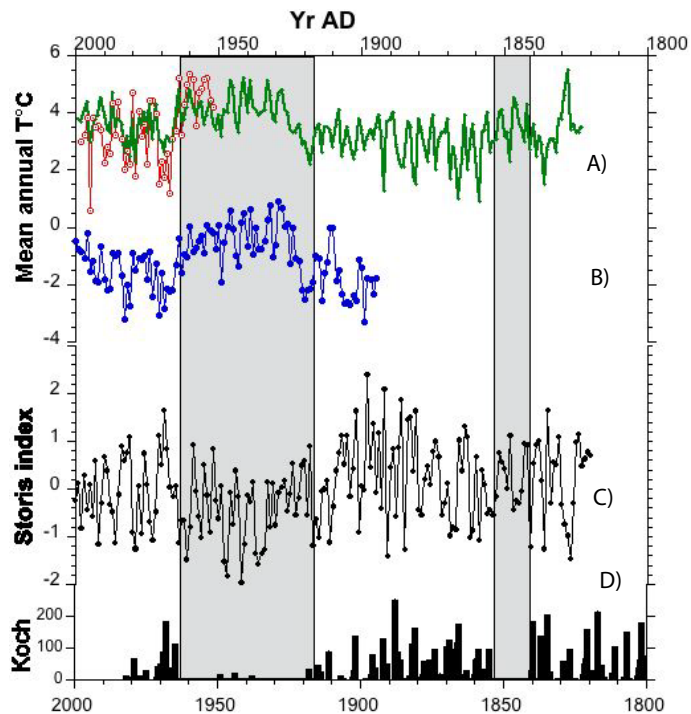


Fig. 3. Historical data from the area of Denmark Strait: **(A)** mean annual temperature data from W Iceland (green), and the Siglunes (red) marine record. **(B)** MAT (blue) from SE Greenland. **(C)** Index of storis (Schmith and Hanssen, 2003). **(D)** Revised Koch sea ice index.

Title Page

Abstract

Introduction

Conclusions

References

Tables

Figures

◀

▶

◀

▶

Back

Close

Full Screen / Esc

Printer-friendly Version

Interactive Discussion

NAO-like climate oscillations across Denmark Strait

J. T. Andrews and
A. E. Jennings

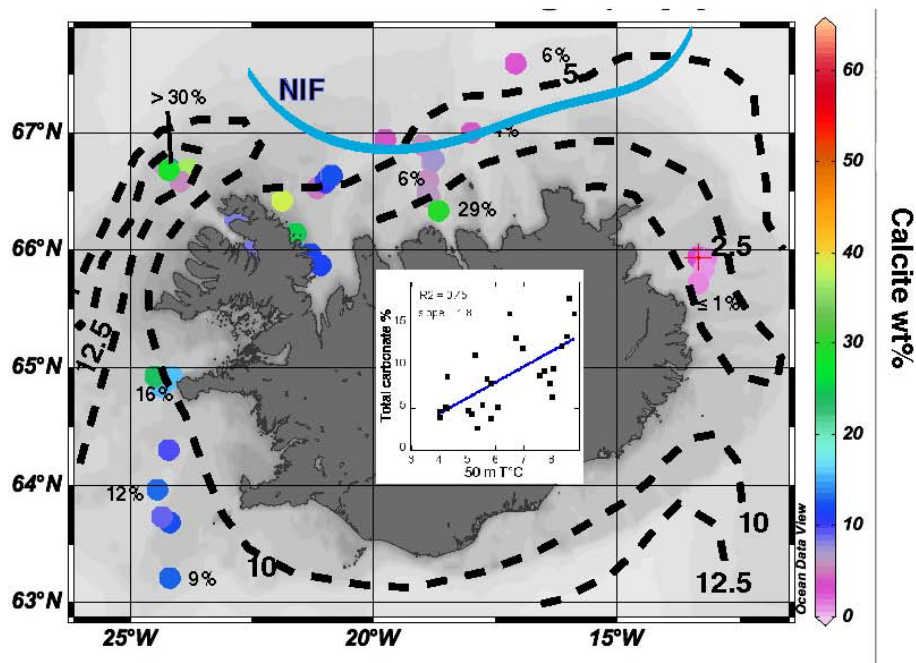


Fig. 4. Weight% of calcite in the > 2 mm seafloor sediments around Iceland (colored circles) and black numbers (i.e., 12%), and the index of vertical mixing (dashed black lines) (from Stefansson and Olafsson, 1991) (units see text) mean 20 May to 15 June 1972–1984. The heavy blue line shows the average position of the North Iceland Front (NFI) (Belkin et al., 2009). The insert shows the relationship between the 50 m water temperature (late July 1997) and the wt% carbonate in seafloor surface sediments (see text).

Title Page

Abstract

Introduction

Conclusions

References

Tables

Figures

⏪

⏩

◀

▶

Back

Close

Full Screen / Esc

Printer-friendly Version

Interactive Discussion

NAO-like climate oscillations across Denmark Strait

J. T. Andrews and
A. E. Jennings

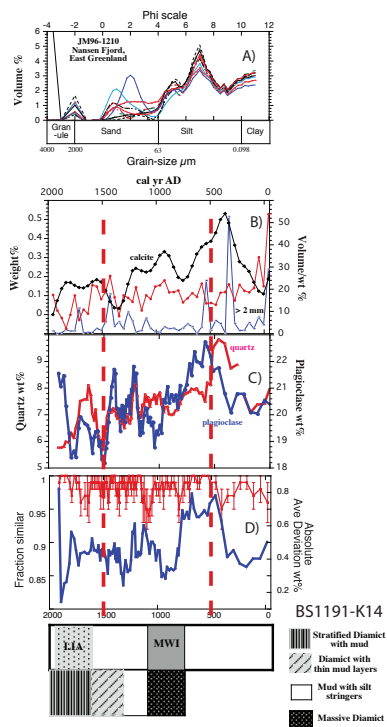


Fig. 5. Data from JM96-1210 and BS1191-K14, Nansen Fjord (Fig. 1). **(A)** Grain-size spectra from JM96-1210; **(B)** plots of the > 2 mm sediment (blue), sand (red), and wt% calcite (smoothed); **(C)** smoothed wt% quartz and plagioclase; **(D)** downcore variations and error in the estimated similarity from the uppermost 5 qXRD sample mineralogy (Supplement) (red) and the absolute average deviation (wt%) from the 9 mineral groups. The two vertical dashed red lines represent the timing of the latest Holocene cold events (Wanner et al., 2011). Lower panel – lithofacies and climatic events from BS1191-K14 (nr JM96-1210) from Jennings and Weiner (1996) (Larsen et al., 1999).

[Title Page](#)
[Abstract](#)
[Introduction](#)
[Conclusions](#)
[References](#)
[Tables](#)
[Figures](#)
[⏪](#)
[⏩](#)
[◀](#)
[▶](#)
[Back](#)
[Close](#)
[Full Screen / Esc](#)
[Printer-friendly Version](#)
[Interactive Discussion](#)

NAO-like climate oscillations across Denmark Strait

J. T. Andrews and
A. E. Jennings

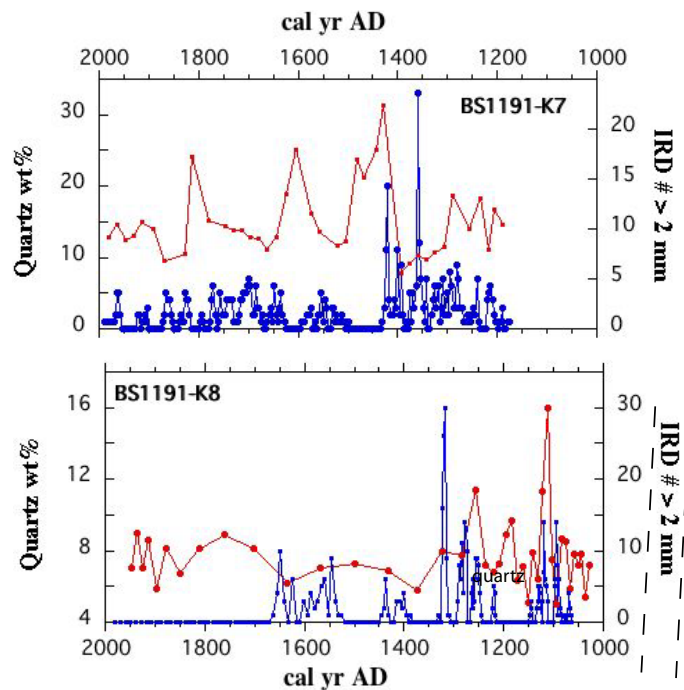


Fig. 6. IRD (blue) and quartz wt% data (red) from BS1191-K7 and -K8, outer Kangerlussuaq Fjord (Tables 1 and 2).

Title Page

Abstract

Introduction

Conclusions

References

Tables

Figures

◀

▶

◀

▶

Back

Close

Full Screen / Esc

Printer-friendly Version

Interactive Discussion

NAO-like climate oscillations across Denmark Strait

J. T. Andrews and
A. E. Jennings

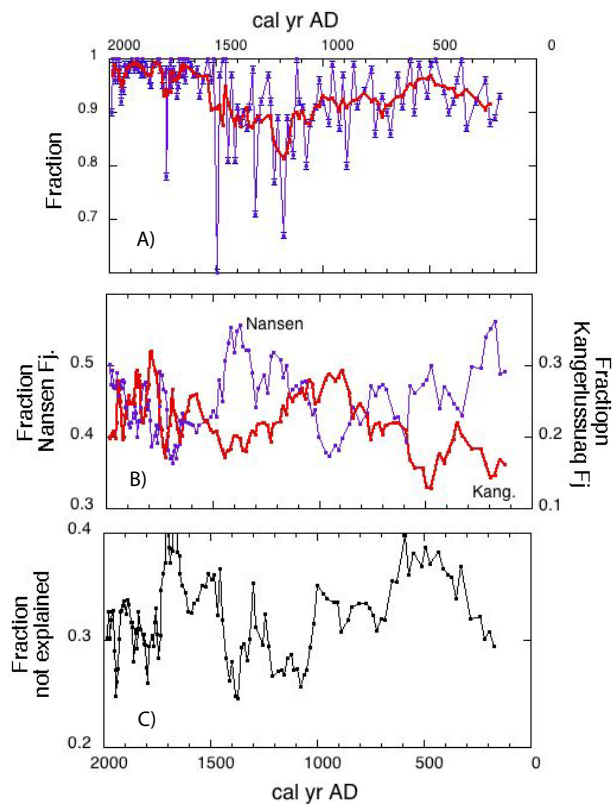


Fig. 7. (A) Changes in the fraction of sediment with a similar mineralogy to the uppermost 5 samples (~ 100 yr) at site 19B/2322 (Fig. 1). (B) Estimated fractions of sediment to site 19B/2322 from the Nansen Fjord (blue) or Kangerlussuaq Fjord (red) based on mineralogy. (C) Changes in the average fraction of sediment not attributable to either source – see (B).

[Title Page](#)
[Abstract](#)
[Introduction](#)
[Conclusions](#)
[References](#)
[Tables](#)
[Figures](#)
[Back](#)
[Close](#)
[Full Screen / Esc](#)
[Printer-friendly Version](#)
[Interactive Discussion](#)

NAO-like climate oscillations across Denmark Strait

J. T. Andrews and
A. E. Jennings

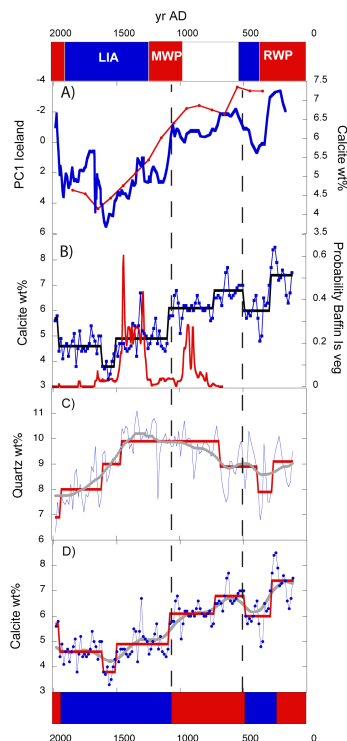


Fig. 8. (A) Climate intervals of the last 2000 yr and a graph of the 1st PC scores from the N Iceland proxy data (red) (Axford et al., 2011) versus the smoothed (5-point average) wt% calcite (blue) from the combined HU93030-019B and MD99-2322; (B) 15 yr calcite wt% (blue) and regime shift mean values versus the radiocarbon calibrated probability distribution for Baffin Island vegetation (Miller et al., 2012) (red); (C) Quartz wt% (grey line with filled circles) and regime shifts (black line) and the SSA trend (heavy grey line); (D) calcite wt% (grey line with filled circles) and regime shifts (black line) and the SSA trend (heavy grey line) and with inferred major climate periods. The dashed vertical lines delimit a “warm” calcite interval between two cold periods.

[Title Page](#)
[Abstract](#)
[Introduction](#)
[Conclusions](#)
[References](#)
[Tables](#)
[Figures](#)
[Back](#)
[Close](#)
[Full Screen / Esc](#)
[Printer-friendly Version](#)
[Interactive Discussion](#)

NAO-like climate oscillations across Denmark Strait

J. T. Andrews and
A. E. Jennings

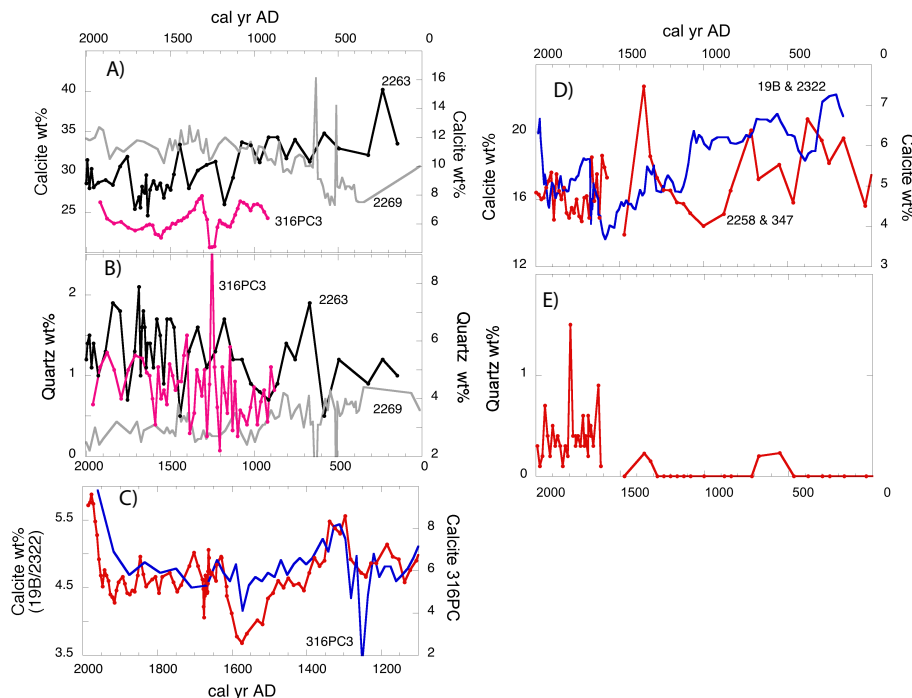


Fig. 9. (A) Calcite wt% data for sites MD99-2263 (left y axis), MD99-2269, and B997-316PC3 (right y axis) from N Iceland (Fig. 1) (B) Quartz wt% from same sites and same y axes. Note the difference in y axis values from the left to right axes. (C). Calcite wt% data from 316PC3 versus 19B/2322 over the last 1300 yr. (D) Calcite wt% data for cores from SW Iceland (Fig. 1) compared to 19B/2322. (E) Quartz wt% data from SW Iceland.

Title Page

Abstract

Introduction

Conclusions

References

Tables

Figures

⏪

⏩

◀

▶

Back

Close

Full Screen / Esc

Printer-friendly Version

Interactive Discussion

NAO-like climate oscillations across Denmark Strait

J. T. Andrews and
A. E. Jennings

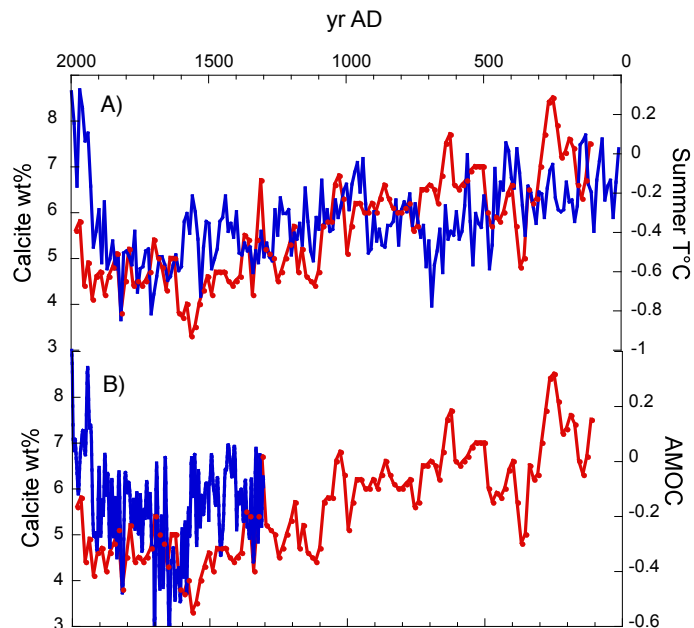


Fig. 10. (A) Plot of the calcite wt% from 19B/2322 (red) versus the summer temperature estimates (Kaufman et al., 2009) (blue). (B) Plot of the calcite wt% from 19B/2322 (red) versus the AMOC estimates for the last 700 yr (blue) (Mann et al., 2009).

[Title Page](#)[Abstract](#)[Introduction](#)[Conclusions](#)[References](#)[Tables](#)[Figures](#)[⏪](#)[⏩](#)[◀](#)[▶](#)[Back](#)[Close](#)[Full Screen / Esc](#)[Printer-friendly Version](#)[Interactive Discussion](#)

NAO-like climate oscillations across Denmark Strait

J. T. Andrews and
A. E. Jennings

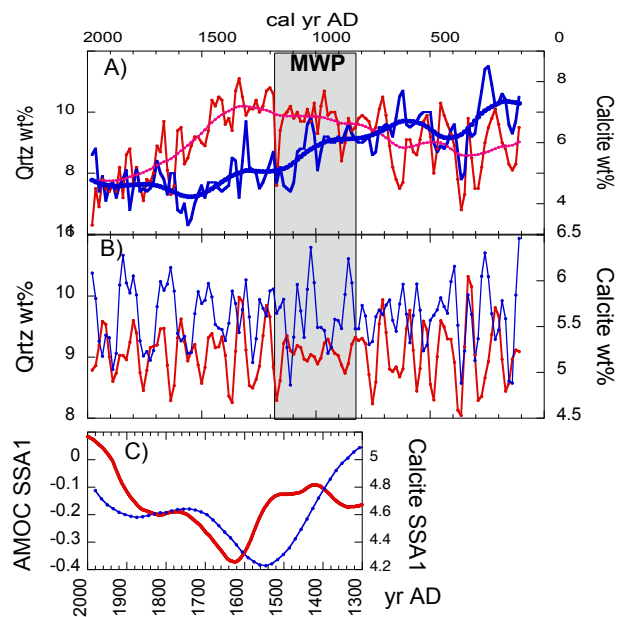


Fig. 11. (A) Wt% of quartz (red) and calcite (blue) from site 19B/2322 and their trends. (B) plot of the reconstructed detrended variations in quartz and calcite based on their significant MTM periodicities. (C) Comparison of the 1st SSA trend for calcite wt% and the AMOC reconstruction (Mann et al., 2009).

NAO-like climate oscillations across Denmark Strait

J. T. Andrews and
A. E. Jennings

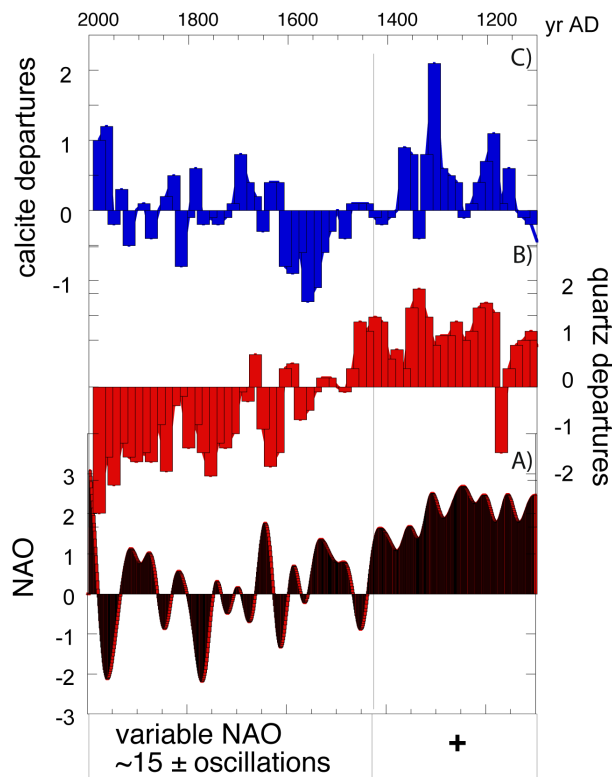


Fig. 12. Plot of the NAO index (Trouet et al., 2009; Kinnaid et al., 2011) against departures from the 900 yr mean values for quartz and calcite at site 19B/2322, East Greenland.