

Supplement to:**Consistency of the Multi-Model CMIP5/PMIP3-past1000 Ensemble**

Oliver Bothe^{1,2,3} (ol.bothe(at)gmail.com), Johann H. Jungclaus², Davide Zanchettin²*

¹ Klimacampus, University of Hamburg, Grindelberg 5, 20144 Hamburg, Germany

² Max Planck Institute for Meteorology, Bundesstrasse 53, 20146 Hamburg, Germany

³ now at Leibniz-Institut für Atmosphärenphysik e.V. an der Universität Rostock,
Schlossstraße 6, 18225 Kühlungsborn

* corresponding author

Includes

Figures S1 to S5

Supplement:

The Figures S1 to S5 supplement Figure 2 of the main manuscript by extending the selection of grid-points.

Caption for all five Figures:

Top rows: Residual quantile-quantile plots for a random selection of 15 grid-points. For the first (light gray), second (dark gray) and last (colored) sub-periods of 28 records. Bottom rows: Rank histogram counts for the random selection of grid-points for the three sub-periods (first to last, light to dark gray) and the full period (black). Full period counts are scaled to match the frequencies of the sub-periods. Large (small) red squares mark grid-points where spread or bias deviations are significant over the full (the individual sub-)period. Small squares from left to right for the first, second and third sub-period. Blue squares are not significant. Locations given in titles of individual panels. For color coding see Figure 2 of main manuscript.

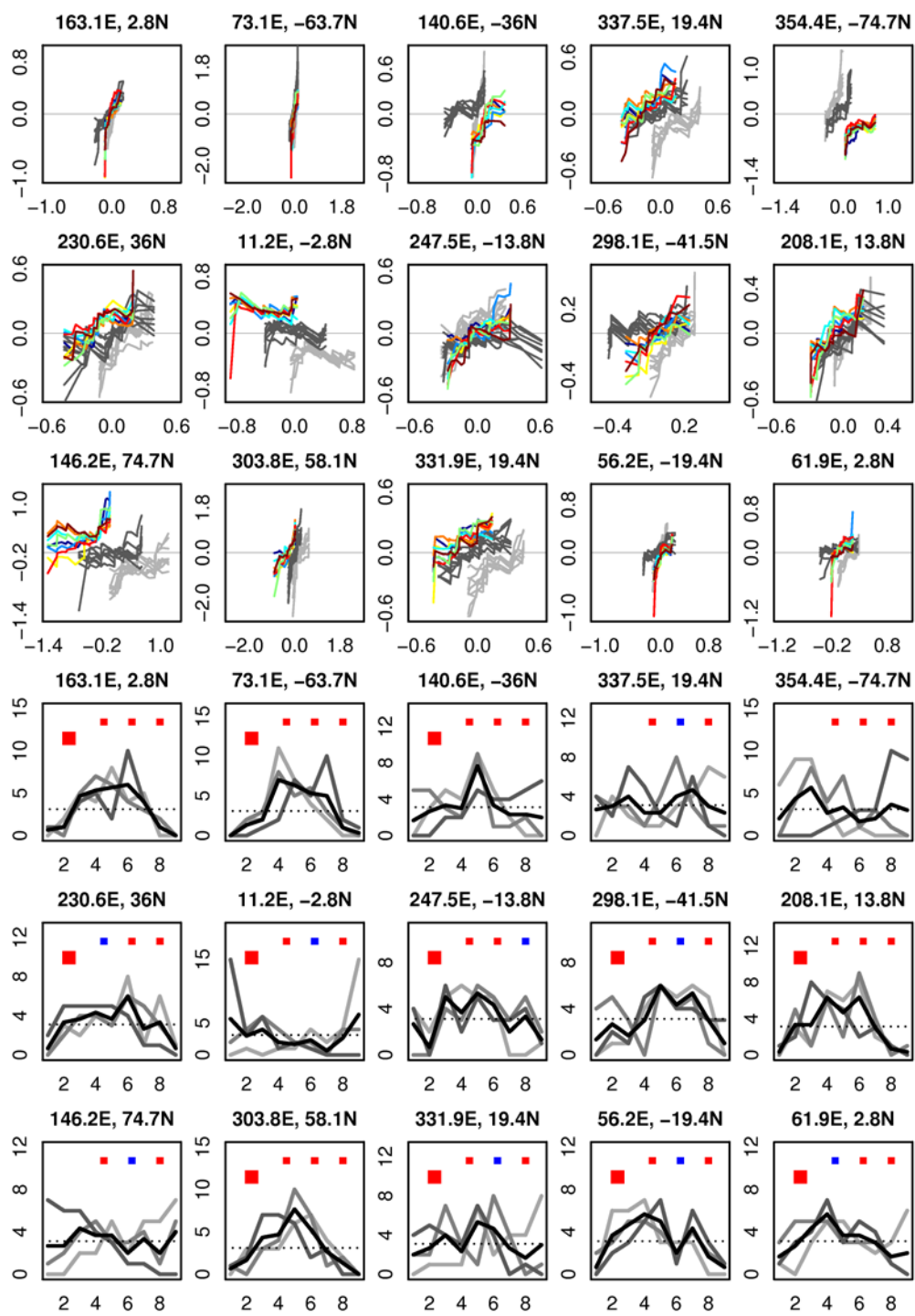


Figure S1

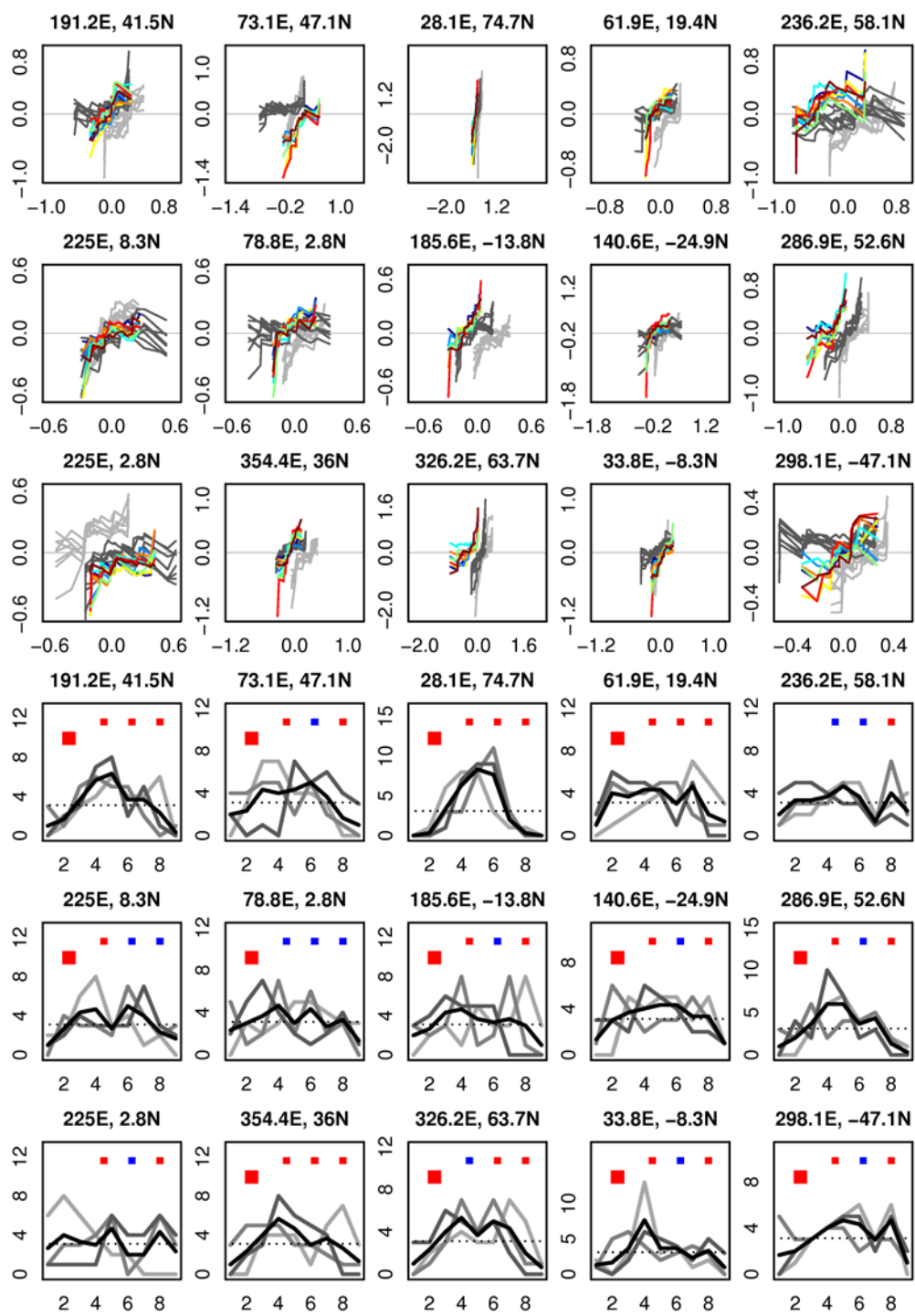


Figure S2

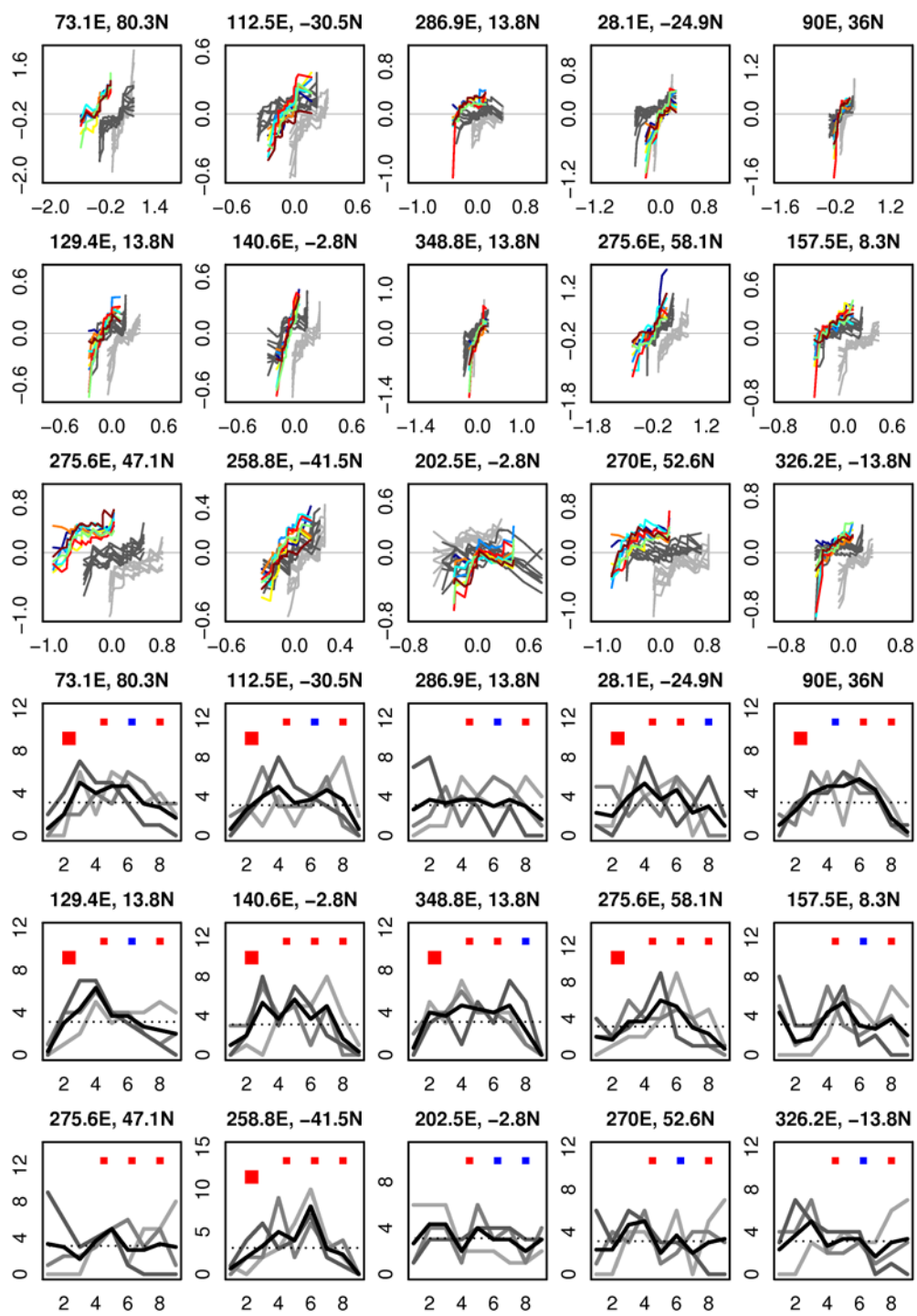


Figure S3

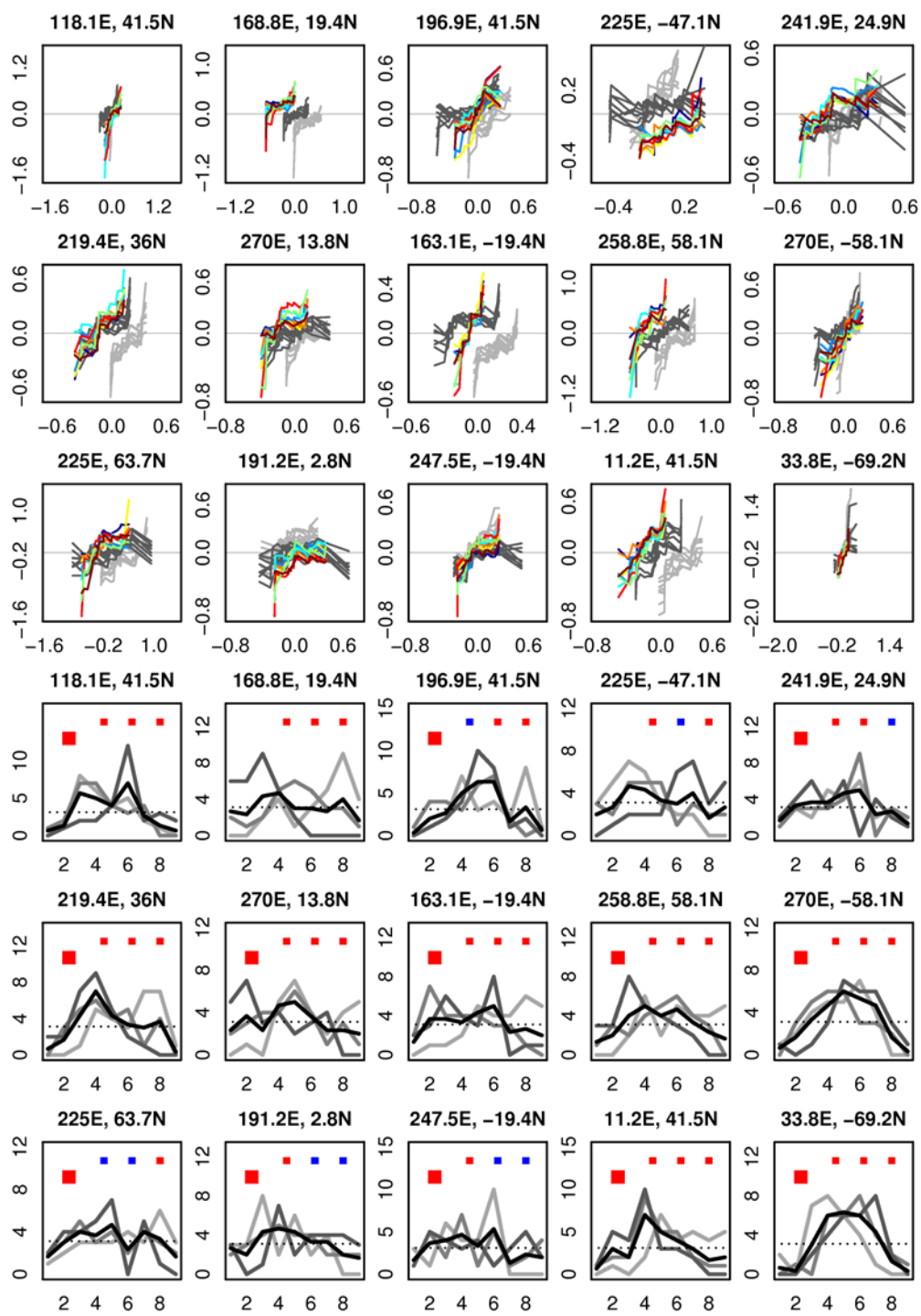


Figure S4

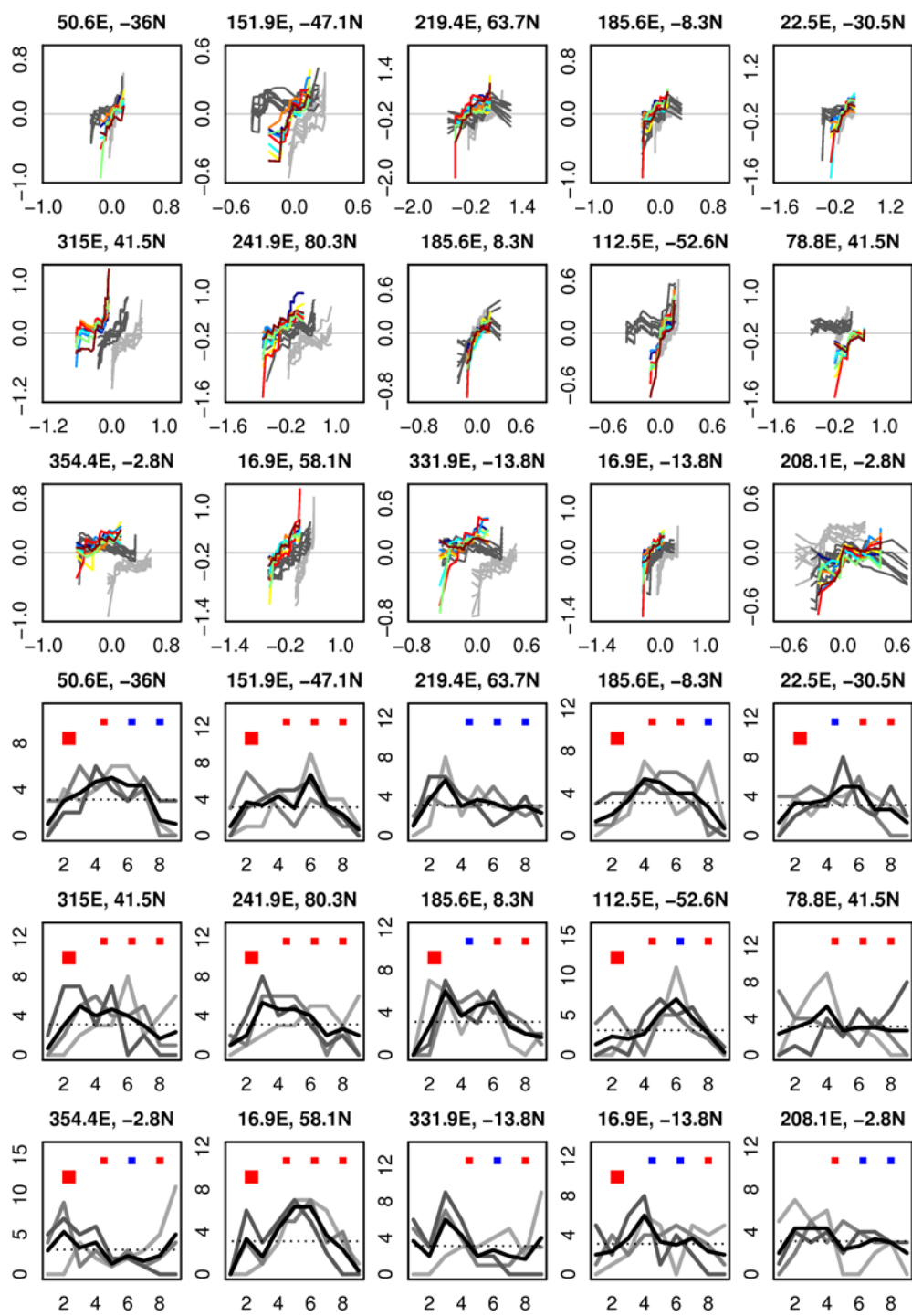


Figure S5