

**Ice coupled
response during the
last glacial**

J. Zumaque et al.

[Title Page](#)

[Abstract](#)

[Introduction](#)

[Conclusions](#)

[References](#)

[Tables](#)

[Figures](#)



[Back](#)

[Close](#)

[Full Screen / Esc](#)

[Printer-friendly Version](#)

[Interactive Discussion](#)



An Ocean – ice coupled response during the last glacial: zooming on the marine isotopic stage 3 south of the Faeroe Shetland Gateway

J. Zumaque^{1,*}, F. Eynaud¹, S. Zaragosi¹, F. Marret², K. M. Matsuzaki^{1,},
C. Kissel³, D. M. Roche^{3,4}, B. Malaizé¹, E. Michel³, I. Billy¹, T. Richter⁵, and
E. Palis¹**

¹Environnements et Paléoenvironnements Océaniques (EPOC), UMR5805, CNRS – Université Bordeaux I, Talence, France

²School of Environmental Sciences, University of Liverpool, Liverpool L69 7ZT, UK

³Laboratoire des Sciences du Climat et de l'Environnement (LSCE), UMR8212, CEA/CNRS-INSU/UVSQ, 91191 Gif s/sYvette, France

⁴Vrije Universiteit Amsterdam, de Boelelaan 1085, 1081 HV Amsterdam, The Netherlands

⁵NIOZ Royal Netherlands Institute for Sea Research Royal, P.O. Box 59, 1790 AB Den Burg (Texel), The Netherlands

* present address: GEOTOP, Département des sciences de la Terre et de l'atmosphère, Université du Québec à Montréal, Canada

** present address: Institute of Geology and Paleontology, Graduate School of Science, Tohoku University, Aramaki 6-3, Sendai 980-8578, Japan

Received: 17 July 2012 – Accepted: 23 July 2012 – Published: 1 August 2012

Correspondence to: F. Eynaud (f.eynaud@epoc.u-bordeaux1.fr)

Published by Copernicus Publications on behalf of the European Geosciences Union.

Ice coupled response during the last glacial

J. Zumaque et al.

Title Page

Abstract

Introduction

Conclusions

References

Tables

Figures



Back

Close

Full Screen / Esc

Printer-friendly Version

Interactive Discussion



Abstract

The rapid climatic variability characterising the Marine Isotopic Stage (MIS) 3 (~ 60–30 CAL-ka BP) provides key issues to understand the atmosphere-ocean-cryosphere dynamics. Here we investigate the response of sea-surface paleoenvironments to the MIS3 climatic variability through the study of a high resolution oceanic sedimentological archive (core MD99-2281, 60°21' N; 09°27' W; 1197 m water depth), retrieved during the MD114-IMAGES (International Marine Global Change Study) cruise from the Southern part of the Faeroe Bank. This sector was under the proximal influence of European Ice Sheets (Fennoscandian Ice Sheet to the East, British Irish Ice Sheet to the South) and thus probably recorded their response to the MIS3 pulsed climatic changes.

We conducted a multi-proxy analysis on core MD99-2281, including magnetic properties, X-Ray Fluorescence measurements, characterisation of the coarse (> 150 µm) lithic fraction (grain concentration) and the analysis of selected biogenic proxies (assemblages and stable isotope ratio of calcareous planktonic foraminifera, dinoflagellate cyst – e.g. dinocyst – assemblages). Results presented here are focussed on the dinocyst response, this proxy providing the reconstruction of past sea-surface hydrological conditions, qualitatively as well as quantitatively (e.g. transfer function sensu lato). Our study documents a very coherent and sensitive oceanic response to the MIS3 rapid climatic variability: strong fluctuations, matching those of stadial/interstadial climatic oscillations as depicted by Greenland Ice Cores, are recorded in the MD99-2281 archive. Proxies of terrigenous and detrital material typify increases in continental advection during Greenland Stadials (including Heinrich events), the latter corresponding also to southward migrations of polar waters. At the opposite, milder sea-surface conditions seem to develop during Greenland Interstadials. After 30 ka, reconstructed paleohydrological conditions evidence strong shifts in SST: this increasing variability seems consistent with the hypothesised coalescence of the British and Fennoscandian ice sheets at that time, which could have directly influenced sea-surface environments in the vicinity of core MD99-2281.

Ice coupled response during the last glacial

J. Zumaque et al.

Title Page

Abstract

Introduction

Conclusions

References

Tables

Figures



Back

Close

Full Screen / Esc

Printer-friendly Version

Interactive Discussion



1 Introduction

The alternation of glacial/interglacial periods that defines the Quaternary is thought to be mainly triggered by changes in orbital parameters (e.g., Imbrie et al., 1993; Berger, 2006). However, a higher frequency in climatic variability is detected during glacial periods and appears to have no direct orbital forcing origin. This millennium climatic variability was observed for the first time in the isotope records from Greenland ice records (Dansgaard et al., 1993) and is expressed through significant and rapid changes in atmospheric temperatures, especially during the Marine Isotope Stage (MIS) 3 (e.g., Dansgaard et al., 1993; Kiefer et al., 2002; Wolff et al., 2010; Austin and Hibbert, 2012). These oscillations switching between warm (GIs for Greenland interstadials) and cold (GSs for Greenland Stadials) climatic phases are known as the Dansgaard-Oeschger (DO) cycles (e.g., Dansgaard et al., 1993). These cycles are punctuated by abrupt ice-sheet discharge events, the so-called Heinrich Events (HEs), corresponding to some of the DO coldest phases, and are illustrated in the North Atlantic sediments by rich layers in silico-clastic coarse particles (Ice-Rafted Debris – IRD; e.g. Bond et al., 1992). IRD are transported by floating ice and preferentially deposited in the Ruddiman Belt (Ruddiman, 1977), a latitudinal belt (40 to 50° N) identified as the preferential area of melting for icebergs during these discharge periods. Study of these IRD particles allowed the characterization of sources involved in these events with great influence of the Laurentide ice sheet during HE1, HE2, HE4 and HE5, and a greater influence of European ice sheets during HE3 and HE6 (cf. Hemming, 2004 and references therein). At the same time, the North Atlantic basin recorded large changes in hydrological conditions, resulting in temperature and salinity decreases in sea-surface waters and changes in the meridional overturning circulation (MOC), with peculiar consequences on the North Atlantic Drift (NAD) and on the formation of North Atlantic Deep Waters (NADW) (e.g., Bond et al., 1992; Bond and Lotti, 1995; Broecker, 1997, 2003; Kissel et al., 1999; Alley et al., 1999; Clark et al., 2002; Ramhstorf, 2002; Hemming, 2004). If these phenomena are now relatively well identified, the causes and consequences of such climatic

Ice coupled response during the last glacial

J. Zumaque et al.

Title Page

Abstract

Introduction

Conclusions

References

Tables

Figures



Back

Close

Full Screen / Esc

Printer-friendly Version

Interactive Discussion



changes and dynamic interactions between ice, ocean and atmosphere remain uncertain. The role of ice-shelves developed at the margins of European ice sheets during the last glacial period has probably been underestimated as suggested by recent works (Hulbe et al., 2004; Alvarez-Solas et al., 2010). There is also a need for a better definition of the geographical fingerprint of such events to help identifying the likely source regions and perturbation mechanisms (Roche et al., 2010).

Here we propose to reconstruct the paleoclimatic and paleoceanographic setting of the southern Faeroe Islands during MIS3, in order to explore the evolution of the surface Atlantic Ocean under the influence of growing European ice sheets. To reach this goal, analysis of organic-walled dinoflagellate cyst (dinocyst) assemblages was undertaken on core MD99-2281, retrieved off SW Faeroe, and quantification of surface hydrological parameters were obtained from ecological transfer functions (the Modern analogue technique-MAT, e.g. Guiot and de Vernal, 2007) applied to these assemblages. Dinocysts have been since long used as sea-surface paleohydrological proxies as their modern biogeographical distribution in surface sediments appear to be tied on ecological parameters of the overlying surface water masses (e.g., Harland, 1983; Rochon et al., 1999a and b; Marret and Zonneveld, 2003; de Vernal and Marret, 2007; Rochon et al., 2008). Dinocysts are organic microfossils and derive from the sexual reproduction of dinoflagellates. The wall of dinocysts, comparable to the sporopollenin of pollen grains, has been called dinosporin (e.g., De Leeuw et al., 2006) and confers to dinocysts a strong resistance to the dissolution and a good fossilization potential (e.g. Evitt, 1985; Rochon et al., 1999a and b; Marret and Zonneveld, 2003). Recent studies however suggest that this compound is in fact closer to cellulose than to sporopollenin (e.g., Versteegh et al., 2012), but their preservation potential is still high, even if the assemblages can be altered by oxidation processes in some specific environments (e.g. Zonneveld et al., 2007; Bogus et al., 2012). They are among the rare proxies offering access to past hydrological conditions of polar and/or glacial extreme environments (e.g., de Vernal and Rochon, 2011).

Ice coupled response during the last glacial

J. Zumaque et al.

Title Page

Abstract

Introduction

Conclusions

References

Tables

Figures

◀

▶

◀

▶

Back

Close

Full Screen / Esc

Printer-friendly Version

Interactive Discussion



In addition, our study compiles a set of multi-proxy data (X-Ray Fluorescence – XRF – core scanning, magnetic properties, abundances of the polar planktonic foraminifera *Neoglobobadrina pachydermas* and IRD concentrations) that contributes to document and discuss the response of the ocean during MIS3.

2 Environmental setting

2.1 Modern oceanic and sedimentological setting

2.1.1 Physiography

Core MD99-2281 (60°21' N, 09°27' W) was retrieved by the R/V *Marion-Dufresne* during the IMAGES (International Marine Global Change Study) V – MD99-114 cruise (Labeyrie et al., 1999). It is made of 29 m of hemipelagic silty clays (Labeyrie et al., 1999; Boulay, 2000). The core was collected at 1197 m deep at the foot of the Faeroe Bank located at the northern end of the Rockall Trough (Figs. 1 and 2). It has been retrieved at a location where seismic continuous parallel draping internal reflectors (see seismic section C in Boldreel et al., 1998) have been attributed to pelagic sediments deposited in a low-energy, deep-water environment, unaffected by the strong current activity (Boldreel et al., 1998).

Sediment accumulation in the Rockall Trough is primarily constrained by bottom currents (Kuijpers et al., 2002). This trough extends from 53° to 60° N west of the United Kingdom, with water depths ranging from 4000 m (southern part) to 1000 m (northern part). The topography is relatively complex (Masson et al., 2002). The northwest margin is bordered by three separate seamounts (George Bligh, Lousy and Bill Bailey's) culminating at more than 500 m water depth. The merging of the different deep channels between these seamounts forms a connection between the Rockall Trough and the Iceland Basin (Fig. 2).

CPD

8, 3043–3091, 2012

Ice coupled response during the last glacial

J. Zumaque et al.

Title Page

Abstract

Introduction

Conclusions

References

Tables

Figures

◀

▶

◀

▶

Back

Close

Full Screen / Esc

Printer-friendly Version

Interactive Discussion



In the north-eastern part, the Rockall Trough is bordered by the Faeroe Bank (FB) and the Wyville-Thompson ridge culminating at less than 100 m and 500 m water depths respectively (Bett, 2001, Fig. 2). The barrier, which separates the Faeroe Bank Channel and the Faeroe Shetland Channel, plays an essential role in the distribution of water masses and the dynamic of bottom currents (Kuijpers et al., 2002). These landforms are the result of the opening of the North Atlantic basin during the Lower Eocene, and post-rift tectonic events that followed (Howe et al., 2006).

2.1.2 Hydrographic and oceanographic setting

The dynamic of surface currents in the Rockall Trough area is primarily driven by the influence of two major gyres: the subtropical anticyclonic and subpolar cyclonic North Atlantic gyres. The latter is characterized by numerous streams, including the well-known poleward current of the NAD, which defines a peculiar distribution pattern of fronts and water masses in the area. The topography of the region, and more specifically the presence of Iceland, forces the penetration of the NAD across the “Iceland-Faeroe-Scotland” ridge where our study site is located. The NAD splits into two branches in the vicinity of the Faeroe Islands (Figs. 1 and 2; Larsen et al., 2008, 2009).

Core MD99-2281 is located under the influence of the modified North Atlantic surface waters, between the Arctic Front (AF) to the north and the sub-Arctic Front (SAF) to the south (Fig. 1). The modern sea-surface temperature (SST) in the area varies from 8 °C during winter to 12 °C during summer (WOA, 1998). Below the surface, the water-mass distribution and deep circulation are governed by the bathymetric complexity of the sector (Fig. 2, Holliday et al., 2000).

The first 1000 m of the water column are occupied by a relatively homogeneous body of water whose temperature and salinity ranges characterize the East North Atlantic Water (ENAW, Holliday et al., 2000; New and Smythe-Wright, 2001). Below dominates the North East Atlantic Deep Water (NEADW). A core of this water enters the Trough from the south and, trapped by the topography to the north, makes a cyclonic gyre, joining the Wyville-Thompson Ridge Overflow Water (WTROW) to continue its trajectory

Ice coupled response during the last glacial

J. Zumaque et al.

Title Page

Abstract

Introduction

Conclusions

References

Tables

Figures



Back

Close

Full Screen / Esc

Printer-friendly Version

Interactive Discussion



into the Iceland Basin (Howe et al., 2006). North of the Wyville-Thompson Ridge, the Norwegian Sea Overflow Water (NSOW) migrates southward across the Faeroe Shetland Channel and then turns west to enter the Faeroe Bank channel (Kuijpers et al., 2002) to join the southern flank of the Iceland- Faeroe Ridge. The NSOW intermittently crosses the Wyville-Thompson Ridge to join the LSW, then reaching our core location (Holliday et al., 2000; New and Smythe-Wright, 2001; Kuijpers et al., 1998, 2002; Rasmussen et al., 2002b).

2.2 Paleoclimatic interest

Previous paleoceanographic studies have demonstrated the high sensitivity of the Faeroe area to millennial-scale climatic variability and its intimate relation to the MOC dynamics (Rasmussen et al., 1996a, b, 2002a, b, 2004, 2008; Eynaud et al., 2002; Voelker et al., 2002; Rasmussen and Thomsen, 2008). During the last glacial period, the southern part of the Faeroe Islands was under the direct influence of the proximal European ice sheets (Fennoscandian ice sheet: FIS and the British-Irish ice-sheet: BIIS) (Fig. 1). Therefore, core MD99-2281 has likely recorded the history of these ice sheets at a millennial scale, especially episodes of decay (including those of HEs) which occurred during MIS3, together with changes in the penetration and vigour of the NAD current, and in the latitude of the Arctic Front. In addition, our site may have recorded instabilities of the marine extensions of the ice sheets, i.e. ice-shelves that are up to now poorly considered in HE dynamics (Hulbe et al., 2004; Alvarez-Solas et al., 2010). Another point concerns the potential existence of an “ice bridge” in the North Sea joining the British ice sheet (BIS) to the FIS between 30 and 25 CAL-ka BP. The presence of this ice bridge is still strongly debated even if this hypothesis has gained increasing acceptance in recent years (Bradwell et al., 2008; Scourse et al., 2009; Hibbert et al., 2010; Chiverrell and Thomas, 2010; Toucanne et al., 2010). Instabilities of proximal glaciers have had a major impact on the surface hydrology of the region and have strongly influenced the NAD, and, consequently, the NADW overflow from

Ice coupled response during the last glacial

J. Zumaque et al.

Title Page

Abstract

Introduction

Conclusions

References

Tables

Figures



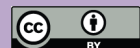
Back

Close

Full Screen / Esc

Printer-friendly Version

Interactive Discussion



the Nordic Seas (e.g., Bond et al., 1992; Bond et Lotti, 1995; Broecker, 1997, 2003; Hemming, 2004).

3 Material and methods

Core MD99-2281 has been sampled every 10 cm between 2090 cm and 1200 cm. The 90 samples were then wet sieved to separate fractions above and below 150 μm . Both fractions were analyzed separately. Planktonic foraminiferal assemblages and ice rafted detritus (IRD) concentrations were determined on the > 150 μm fraction, whereas palynological analyses (dinocyst assemblages, freshwater algae) were conducted on the < 150 μm one.

3.1 Dinoflagellate cysts (dinocysts)

3.1.1 Dinocyst assemblage analysis

Palynological preparations follow the protocol described by de Vernal et al. (1996), slightly modified at EPOC laboratory (cf. http://www.epoc.u-bordeaux.fr/index.php?lang=fr&page=eq_paleo_protocoles for details). The dinocyst specific determination was done with a Leica Microscope at a X400 magnification. Around 300 dinocysts were counted in each sample to obtain a good statistical representation of the assemblage. Species identification follows Rochon et al. (1999). Relative abundances were calculated relative to the total sum of Quaternary dinoflagellate cysts and absolute abundances (concentration cysts cm^{-3} of dried sed.) were obtained thanks to the marker grain method (de Vernal et al., 1996; Mertens et al., 2009). Counts of non-Quaternary reworked dinocysts were done in order to evaluate the ratio Rd/Md [reworked dinocysts / Modern dinocysts] which along the western European margin could provide a proxy of terrigenous advection (e.g., Zaragosi et al., 2001; Penaud et al., 2009).

Ice coupled response during the last glacial

J. Zumaque et al.

Title Page

Abstract

Introduction

Conclusions

References

Tables

Figures



Back

Close

Full Screen / Esc

Printer-friendly Version

Interactive Discussion



3.1.2 Transfer functions

An ecological transfer function has been applied to the raw data derived from the counts (relative abundances) to quantitatively reconstruct the sea-surface paleohydrological parameters. The transfer function was performed with the R software (“R” version 2.7.0, R Development Core Team, 2008) using a script developed by Guiot and Brewer (http://www.cerege.fr/?id_rubrique=3&masque=inc-presentation&id_article=29165) for the Modern Analogue Technique (MAT, e.g., Guiot and de Vernal, 2007). This statistical tool principally uses the statistic distance between fossil (paleoceanographic record) and current (modern data base) assemblages. Modern dinocyst assemblages are compiled in a geo-referenced database of marine surface sediment samples. The database we used here is that of de Vernal et al. (2008) with 1189 stations from North Atlantic, Arctic and North Pacific oceans and their adjacent seas (see recurrent updates at: <http://www.geotop.ca/fr/bases-de-donnees/dinokystes.html>). Calculations rely on a weighted average of SST values (compiled from the 2001 version of the World Ocean Atlas) from the best five modern analogues, with a maximum weight given for the closest analogue in terms of statistic distance/i.e. dissimilarity minimum (e.g. Kucera et al., 2005; Guiot and de Vernal, 2007). Among the sea-surface parameters that we can reconstruct on the basis of dinocysts, are SSTs and sea-surface salinities (SSSs) for the warm season, i.e. mean summer (June-July-August average), the cold season, i.e. mean winter (January-February-March average), the warmest (August) and the coldest (February) months of the year, but also the sea-ice cover duration (months per year). The reader is referred to Guiot and de Vernal (2007, 2011a and b) for a review of the theory of transfer functions, and to de Vernal et al. (2001, 2005) for a step by step description of the application of transfer functions to dinocysts, including discussion about the degree of accuracy of the method.

Standard deviations must be taken into account in the reconstituted hydrological parameters because of the accuracy of the database calibration. They have been established by comparing the predictions provided by the transfer functions and direct

CPD

8, 3043–3091, 2012

Ice coupled response during the last glacial

J. Zumaque et al.

Title Page

Abstract

Introduction

Conclusions

References

Tables

Figures



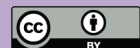
Back

Close

Full Screen / Esc

Printer-friendly Version

Interactive Discussion



instrumental measurements made on surface waters. The root mean square errors of prediction (RMSEP) for the parameters presented in this paper are: $\pm 1.1^{\circ}\text{C} \pm 1.6^{\circ}\text{C}$ for SST of February and August respectively, and ± 1.1 months per year for the ice cover duration (Penaud, 2009). Associated and additional information are listed on the GEOTOP website (<http://www.geotop.ca/>).

3.2 Complementary tools

3.2.1 Magnetic properties

The core has been sub-sampled using u-channels to perform detailed magnetic analyses. In order to complement onboard susceptibility measurements made with a large diameter coil (low resolution), magnetic susceptibility has been repeated at the LSCE with a 45-mm diameter MS2-C Bartington coil. The data were generated every 2 cm with a resolution close to 4 cm and they were normalized by the volume to get the volume susceptibility (κ). The natural remanent magnetization (NRM) was measured using a 755-R 2G cryogenic pass-through magnetometer, equipped with a high resolution set of coils and placed in the μ -metal shielded room of LSCE. An in-line alternating field (AF) demagnetization unit was used for the stepwise demagnetization at 5, 10, 15, 20, 25, 30, 35, 40, 45, 50, 60 and 80 mT. After demagnetization at 80 mT, 87 % to 97 % of the initial magnetization was removed. Measurements were made every 2 cm with a resolution of about 4 cm.

The Anhysteretic Remanent (ARM) and Isothermal Remanent (IRM) magnetizations were acquired and demagnetized also on u-channels using the same method and instruments. ARM was acquired along the vertical geographical axis in a peak alternating field of 100 mT and a steady bias field of $50 \mu\text{T}$. During acquisition, the samples were translated through the coils at a speed of about 1 cm s^{-1} (Brachfeld et al., 2004). After acquisition, the ARM was then progressively demagnetized using 10 steps at 10, 15, 20, 25, 30, 35, 40, 50, 60, and 80 mT. Saturated IRM (SIRM) was then acquired, also along the vertical geographical axis in six steps (0.05, 0.1, 0.2, 0.3, 0.5 and 1 T) using

Ice coupled response during the last glacial

J. Zumaque et al.

Title Page

Abstract

Introduction

Conclusions

References

Tables

Figures



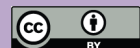
Back

Close

Full Screen / Esc

Printer-friendly Version

Interactive Discussion



a 2G 1.6 m long pulsed solenoid and stepwise demagnetized using the same 10 steps as for the ARM. During the demagnetization of NRM, ARM and IRM, the u-channels were translated at a speed of about 4 cm s^{-1} through the demagnetization coils. All the data were acquired using software developed at LSCE, which allow to considerably reduce the translation speed during the measurements, while the u-channel passes through the pick-up coil. This is particularly adapted to the measurements of very high magnetizations as the ones of core MD99-2281 because the reduced translation speed allows to reliably count the flux jumps. Previous works already conducted in the area established that the main magnetic mineral is magnetite (Kissel et al., 1999; Ballini et al., 2006). The co-variations obtained between the low field magnetic susceptibility, the ARM and the IRM data therefore indicate that these parameters are only concentration dependent in this sediment (except during HE4, see below).

3.2.2 XRF (X-Ray Fluorescence) elementary analyses

A non-destructive X-ray fluorescence (XRF) scan of the core was done using the CORTEX scanner at a resolution of 2 cm (Richter et al., 2006). To complement these data, a high resolution scan (every 2 mm) was done at EPOC laboratory with the Avaatech XRF Core Scanner on the sections (990 cm–2100 cm) investigated for dinocysts. This provides us with a semi-quantitative approach of the sediment chemical composition (for major and some minor chemical elements), and thus permits to estimate changes in the nature of sediments along time. Richter et al. (2006) demonstrated on the basis of the low resolution XRF scan of a proximal core MD99-2282 ($59^{\circ}29' \text{ N}$; $10^{\circ}34' \text{ W}$) that the abundance of some elements, such as Ca, or the ratio K/Ti, provides information about glacial-interglacial alternances. It was also observed by Ballini et al. (2006) at the DO scale. Among other applications of the XRF tool, the ratio K/Ti could provide information about lithic grain sources, and the $(\text{Fe} + \text{Ti}) / (\text{Ca} + \text{Sr})$ ratio further gives access to the proportion of lithogenic versus biogenic components within the sediments. The variations in Fe, Mn and S abundances further help to identify early diagenesis processes (Mojtahid et al., 2005; Richter et al. 2006).

Ice coupled response during the last glacial

J. Zumaque et al.

Title Page

Abstract

Introduction

Conclusions

References

Tables

Figures



Back

Close

Full Screen / Esc

Printer-friendly Version

Interactive Discussion



3.2.3 Planktonic foraminifera

These calcareous-walled protists form part of the zooplankton, and their geographical distribution covers almost all oceans (e.g., Kucera, 2007). There are currently about forty species in the modern assemblage of planktonic foraminifera. One of the mesopelagic species well known and frequently used in paleoclimatology and biostratigraphy is the polar taxon, *Neogloboquadrina pachyderma* sinistral (NPS) coiled form. Quantification of this taxon abundance (%) in the planktonic assemblages provides access to a qualitative estimate of surface water temperatures, and depending on the areas, directly follows the Polar Front migrations (e.g., Ericson, 1959; Eynaud et al., 2009). Counts of the relative abundances of this species have been made on known aliquots of the dried > 150 µm residues from the same samples studied for dinocyst assemblages.

In addition stable isotope measurements were done on NPS shells. Specimens were picked out from the 200–250 µm fraction and analysed at EPOC, using an Optima Micromass mass spectrometer. For each measurement, 80 µg mean weight aliquots (5 to 6 specimens) were treated with individual acid baths. The extracted CO₂ gas was analyzed versus a laboratory reference gas calibrated with respect to VPDB (for Vienna Pee Dee Belemnite), using the international standard NBS 19. For this paper, only δ¹⁸O data will be discussed.

3.2.4 Ice-Rafted Debris

In hemipelagic cores, ice rafted detritus (IRD) are generally determined in the coarse lithic > 150 µm grain fraction. These large lithic Grains (LLG), tear off bedrock under the influence of boreal ice sheet dynamics during glaciations, were disseminated by icebergs throughout the North Atlantic ocean during ice-sheet calving events, as for instance during Heinrich events (Heinrich, 1988; Bond et al., 1992; Bond and Lotti, 1995; Elliot et al., 2001; Broecker, 2003; Hemming, 2004). The study of IRD concentrations

CPD

8, 3043–3091, 2012

Ice coupled response during the last glacial

J. Zumaque et al.

Title Page

Abstract

Introduction

Conclusions

References

Tables

Figures

◀

▶

◀

▶

Back

Close

Full Screen / Esc

Printer-friendly Version

Interactive Discussion



(number of LLG > 150 $\mu\text{m g}^{-1}$ dry sediment) thus provides a way to document ice-sheet collapses throughout time.

4 Stratigraphy of the core

Nine AMS ^{14}C dates measured on planktonic foraminifera monospecific samples (cf. Table 1) have been obtained on the topmost eleven meters of core MD99-2281 (Table 1, Boulay, 2000) providing a first stratigraphic frame between 10 and 24 CAL-ka BP. For this work, four supplementary AMS ^{14}C dates were obtained between 12 and 19 m in the core. Regarding the time period we consider for this paper, radiocarbon dates were calibrated using the “glacial polynomial” from Bard (1998) and Bard et al. (1998) which provides calibration up to 36 ^{14}C ka BP (Table 1).

Following several paleoceanographic studies in the area (Rasmussen et al., 1996b, 1997; Kissel et al., 1999; Stoner et al., 2000; Laj et al., 2000) these age control points were combined to tie-points generated by the comparison of the record of magnetic concentration parameters to the NGRIP-GICC05 $\delta^{18}\text{O}$ record (Svensson et al., 2008), i.e. the recommended North Atlantic regional stratotype (after Austin and Hibbert, 2012). The rationale is that marine records of magnetic concentration parameters from MIS 3 are consistent across the North Atlantic Basin on the path of different overflow branches of the NADW and could be tied on the high frequency climatic variability (DO cycles, e.g. Sanchez-Goñi and Harrison, 2010; Wolff et al., 2010) characteristic of this period (e.g. Kissel et al., 1999). This approach comparable to an event-based stratigraphy has recently been acknowledged as one of the most robust way to validate age control in marine sediments (Austin and Hibbert, 2012).

Our stratigraphy has thus been constructed by adjusting the magnetic concentration increases to the beginning of Greenland interstadial (GIS) warmings (Austin and Hibbert, 2012 recommended protocol) and conversely, the magnetic concentration decreases to Greenland stadial (GS) coolings (Fig. 3). The chronostratigraphic ages used for this work conform to the recent update done by Wolff et al. (2010) on DO events. As

Ice coupled response during the last glacial

J. Zumaque et al.

Title Page

Abstract

Introduction

Conclusions

References

Tables

Figures



Back

Close

Full Screen / Esc

Printer-friendly Version

Interactive Discussion



a result, 18 stratigraphic control points have been added to the AMS ^{14}C dates (Table 1, Fig. 3). The age model has been constructed on the basis of a linear interpolation (Table 1, Fig. 4) giving an average sedimentation rate of about 80 cm ka^{-1} for the studied period.

Additional tie points, independent from climate are also retrieved from the record of the changes in the earth magnetic field intensity, in particular the two prominent lows attributed to the Mono Lake (MLE) and to the Laschamp (LE) excursion (Laj et al., 2000). Due to the modulation of cosmogenic isotopes production by the dipolar earth magnetic field, these two excursions have their counterpart in the ^{10}Be and ^{36}Cl records from ice (Wagner et al., 2000). Therefore, they allow a robust correlation between ice and sediment climatic records. In both archives, the MLE occurred during GS7 and the LE is centered on GI10. We observe that both are at the right place in core MD99-2281 (Figs. 3 and 4), giving confidence on the correlation discussed above.

5 Results

5.1 Dinocyst data

Thirty dinocyst taxa were identified in the MIS3 assemblages. Their absolute abundances in the sediment (concentrations) are high and vary between 1000 and $90\,000 \text{ cysts cm}^{-3}$ along the studied section, with a mean value around $10\,000 \text{ cysts cm}^{-3}$ (Fig. 5). As a whole the dinocyst concentrations follow the MS properties data, thus indicating maximum dinocyst production and/or deposition and/or preservation to the studied site during warm GIs, and conversely during cold GSs. Some strong excursions were recorded over the studied interval, with especially two peaks in concentrations of about $90\,000$ and $57\,000 \text{ cysts cm}^{-3}$ at 1660 and 1950 cm depths respectively.

The assemblages are dominated by five species (Fig. 5, Table 2), which are: *Bitectatodinium tepikiense* which largely dominates the assemblages, *Operculodinium*

Ice coupled response during the last glacial

J. Zumaque et al.

Title Page

Abstract

Introduction

Conclusions

References

Tables

Figures



Back

Close

Full Screen / Esc

Printer-friendly Version

Interactive Discussion



centrocarpum, *Brigantedinium* spp., *Islandinium minutum* (upper part of the section) and *Pentaparsodinium dalei* (lower part of the section). Table 2 summarizes the most salient features recorded for the encountered species both at present and along the studied section of core MD99-2281. The continuous presence along the record of specimens from the genus *Brigantedinium*, with occurrence of other peridinioid -species indicate that the alteration of the assemblage by oxygenation processes (e.g., Zonneveld et al., 2007) was not intense. This is also supported by high dinocyst concentrations in the sediments during GiS which yet record active deep-sea circulation (e.g. Kissel et al., 1999), and thus better ventilation.

5.2 Sea-surface paleohydrology (from dinocyst transfer function) during MIS3

The sea-surface paleohydrological conditions quantified on the basis of the dinocyst MAT transfer function (database 1189) are shown on Fig. 5 (right panel).

In the studied section, August SSTs vary between 8.5 and 17 °C, with a mean around 16 °C, and February SST between 6 and –1 °C. The reconstructed February SSTs are considerably lower than the modern ones over the area, which are fluctuating around an average of 8.7 °C (WOA, 1998). In contrast, the reconstructed August SSTs are well above the modern averages of 12.1 °C (WOA, 1998). Our reconstructions indicate that a positive anomaly of nearly 4 °C (in comparison to the modern conditions) was recorded over the area during MIS3 in summer.

Sea-ice cover duration varies between 0 and 2 months yr⁻¹ along the main part of the section except in the topmost part of the studied section where it reaches values up to 5 months per year. All these values are above the modern ones, the area being presently free of sea-ice, even in winter, but are still very low. They should be considered rather as an index of the presence of ice, regarding the RMSEP of 1.1 months per year.

CPD

8, 3043–3091, 2012

Ice coupled response during the last glacial

J. Zumaque et al.

Title Page

Abstract

Introduction

Conclusions

References

Tables

Figures

◀

▶

◀

▶

Back

Close

Full Screen / Esc

Printer-friendly Version

Interactive Discussion



5.3 Multiproxy compilation

Figure 6 compiles the multiproxy dataset we obtained on core MD99-2281 between 1100 cm and 2100 cm, i.e. 26.5 and 41.5 CAL-ka BP (± 1.6 ka considering the GICC05 chronology uncertainty after Svensson et al., 2008). High-resolution XRF data are compared to MS data, planktonic foraminifera data and to large lithic grain (LLG > 150 μm) concentration in the sediment, this latter indicating IRD arrivals on site.

The XRF data show a high variability in correlation with changes in magnetic records (Fig. 6) with each minimum in magnetic concentration corresponding to a minimum in the XRF Calcium detection curve ($^{\text{XRF}}\text{Ca}$), and conversely maxima in magnetic concentration match maxima in $^{\text{XRF}}\text{Ca}$. This indicates that the magnetic concentration record does not result from a dilution effect by calcium carbonate and really illustrates changes in the input of magnetites by overflow water, as for the other cores distributed along the path of the NADW. This correlation also suggests relatively low biogenic calcareous inputs (Richter et al., 2006) during stadial periods, alternating with higher inputs during interstadials. This is corroborated by the ratios $(\text{Ti} + \text{Fe}) / (\text{Ca} + \text{Sr})$, K / Ti and the LLG concentration in the sediment which together indicate strong terrigenous input (e.g. Richter et al., 2006; Penaud et al., 2009) preferentially during stadials, but poor in magnetic content. At the opposite, interstadials record increase in the $^{\text{XRF}}\text{Ca}$ content occurring in concordance with higher concentration of planktonic foraminifera shells in the sediment and lower NPS $\delta^{18}\text{O}$ values. It is worth noting that these conditions are particularly characteristic of the interstadial terminal parts in our record.

6 Towards an integrated view of the response of sea-surface paleoenvironments south of the Faeroe Islands during MIS3

The Marine Isotopic Stage 3 covers more than 30 000 yr. Its lower stratigraphic limit is located at around 59 ka BP (e.g., Martinson et al., 1987) and its upper stratigraphic boundary has recently been revised by Wolff et al. (2010) and positioned at the

Ice coupled response during the last glacial

J. Zumaque et al.

Title Page

Abstract

Introduction

Conclusions

References

Tables

Figures

⏪

⏩

◀

▶

Back

Close

Full Screen / Esc

Printer-friendly Version

Interactive Discussion



transition between GS4 and GI3 around 27 730 CAL-a BP. Other previous work considered MIS3 termination at the end of HE3 after 29 000 CAL-a BP (Voelker et al. 2002; Bradwell et al., 2008; Hibbert et al., 2010).

Figure 6, integrating the most significant results of our study, summarizes salient features detected during MIS3 in core MD99-2281. If the DO structure (cold GSs versus warm GIs) is clearly recognizable in this multiproxy dataset, it is worth noting the good consistency between the different studied paleoenvironmental proxies. The highlighted variability is well defined through qualitative data as well as through quantitative ones, with a pattern which reveals the sequencing of MIS3 millennial scale events over the area. The following discussion has been structured on this basis, considering separately GSs and GIs in order to better discriminate their specific paleoenvironments.

6.1 Interstadials (GIs)

The pattern detected for GIs on the basis of our study (Fig. 6) appears to be reproducible for almost all the recovered GIs and reveals milder climatic and sea-surface conditions. Proxies of sea-surface temperature, as well as ^{XRF}Ca (e.g., Richter et al., 2006), $\delta^{18}O$ low values (signing a warming and/or melt-water advection) and the absolute abundance of planktonic foraminifera, appear together in close agreement with the reconstructed February SSTs. However, the warm excursions detected here indicate a late warming during GIs, occurring at the transition towards GSs. This is quite atypical considering the abruptness classically attributed to DO atmospheric warmings (Severinghaus and Brook, 1999; Lang et al., 1999; Schulz, 2002). Other proxies reveal GIs marked by lower IRD inputs, together occurring with reduced advection of terrigenous material (i.e. low values of the ratios $[Ti + Fe]/[Ca + Sr]$ and K/Ti , also probably linked to a dilution by an enhanced carbonate biogenic productivity), and a ratio of Rd/Md close to zero. This suggests reduced calving from the surrounding ice sheets. The magnetic content is high at the same time as bottom currents are enhanced, transporting magnetite-rich sediments from the basaltic sill. The reconstructed sea-ice cover duration indicates GIs mostly sea-ice free. This is coherent with warmer SSTs recorded

Ice coupled response during the last glacial

J. Zumaque et al.

Title Page

Abstract

Introduction

Conclusions

References

Tables

Figures



Back

Close

Full Screen / Esc

Printer-friendly Version

Interactive Discussion



during winter (February) and summer (August) for most of the duration of these warm events (except within events of larger sea-ice duration excursions, see below). However, during Gl8, our reconstructions argue for very different sea-surface conditions than the modern ones, especially because strong SST anomalies (modern versus Gl8) are detected (Figs. 5 and 6): i.e winters appear to be colder compared to modern ones (-6°C) whereas summers record positive anomalies of nearly 4°C . These anomalies are strongly reduced during warm winter excursions which mark the end of the Gl8: SSTs thus tend very briefly to mirror modern conditions. Transient sea-ice cover development accompanies these peculiar events.

High relative abundances of NPS ($> 80\%$) in the North Atlantic modern sediments mark the presence of the polar front (PF) (e.g., Eynaud et al., 2009). A shift is observed concerning this species in the vicinity of Faeroes with abundances sharply increasing north of these islands and reaching monospecific values in the Greenland Sea. Percentages up to 40% can be recorded in modern sediment of the area. The signal reconstructed in MD99-2281 during MIS3 could thus provide a record of the evolution of the PF position over the area. The pattern identified within this proxy follows the DO oscillations with Gl8 recording percentages close to their modern values, i.e. conditions which characterise a northern position of the PF. Along the studied section, relative abundances of NPS perfectly mirror the evolution of the ^{XRF}Ca signal (Fig. 6).

6.1.1 Gl8

The Gl8 records atypical conditions. It is considered as one of the warmer MIS3 interstadials (Sanchez-Goñi et al., 2008) and is marked by a gradual cooling in ice records; its occurrence in our archive evidences at least two distinct phases. The reconstructed sea-surface conditions characterise a Gl8 recording warm August SST of nearly 16°C during the first centuries, followed by a sharp cooling at about 37.4 ka BP which instead corresponds to warmer February SSTs and to an abrupt increase (the largest in our record) in the detrital material as documented by the LLG concentrations (Fig. 6). However, it should be noted that this transition is not accompanied by any increase in

Ice coupled response during the last glacial

J. Zumaque et al.

Title Page

Abstract

Introduction

Conclusions

References

Tables

Figures



Back

Close

Full Screen / Esc

Printer-friendly Version

Interactive Discussion



the $[Ti + Fe]/[Ca + Sr]$ or K/Ti ratios or any change in the ^{XRF}Ca or magnetic concentration. $\delta^{18}O$ values indicate rapid minor oscillations within GI8, with a trend toward higher values recorded precisely when the LLG peak occurred. We also note that percentages of NPS are then relatively high compared to the other GIs, with also high absolute abundances of planktonic foraminifera shells in the sediment. This terminal phase probably relates to milder conditions (especially during the winter months as detected by dinocysts).

6.2 Stadials (GSs and Heinrich Events HEs)

In our record, all GSs (underlined by grey bands on Fig. 6), except HE3, are characterized by high LLG concentrations and high abundances of NPS, coupled with high values of the ratios Rd/Md , $[Ti + Fe]/[Ca + Sr]$ and K/Ti . Conversely, both ^{XRF}Ca content and planktonic foraminiferal abundances significantly decrease. This reflects important terrigenous advections (Matthiessen et al., 2000; Zaragosi et al., 2001; Richter et al., 2006; Ménot et al., 2006; Penaud et al., 2009). However, there are less magnetic particles than during GI. This is related to the calving of the proximal ice sheets that does not bring magnetic particles at that time, and is combined with a reduced bottom current, while, during GI, stronger deep currents bring magnetic particles from the Iceland plateau. The high percentages of NPS (between 80 and 100 %), accompanied by high $\delta^{18}O$ values, further indicate a marked southward migration of polar waters.

These discharges are accompanied by SST approaching $0^{\circ}C$ in February. However, a strong seasonality is observed during these periods as SSTs are still high in August. Such a strong seasonality occurring during GSs is at the opposite of what is at present characteristic of the area. Modern sea-surface environments are indeed strongly influenced by the penetration of the NAD, reducing the SST difference between winter and summer ($3^{\circ}C$ only). Conditions recorded during MIS3 could then be due to a globally reduced NAD influence over the site of study. The increase in seasonality we find could also be related to sea-surface conditions marked by the presence of proximal ice

Ice coupled response during the last glacial

J. Zumaque et al.

Title Page

Abstract

Introduction

Conclusions

References

Tables

Figures

◀

▶

◀

▶

Back

Close

Full Screen / Esc

Printer-friendly Version

Interactive Discussion



5 sheets which may have maintained cold atmospheric situations during winter. Additionally, another scenario could imply the development during summers of a thin, low salinity, surface layer in relation to the seasonal melting of local ice-sheets, which could be rapidly warmed up during the warm season. This atypical warm summer signal could also be related to the formation of polynias, which could have constituted patchy “hot spots” free of ice. Actually, such phenomema are observed at present in the modern Arctic Ocean, where strong winds associated or not to the upwelling of warm waters, create holes in the sea-ice cover (e.g. Platov, 2011).

6.2.1 Heinrich event 4 (HE4)

10 Known as the largest amplitude cooling event over HEs (e.g. Cortijo et al., 1997), with, in particular a very strong Laurentide ice-sheet (LIS) signature, HE4 can be divided in three phases in some parts of the Northeast Atlantic (e.g. Hemming, 2004; Sanchez-Goni and Harrison, 2010) with a first European phase, a second longest Canadian phase and then a terminal European phase (Snoeckx et al., 1999; Grousset et al., 2000). Multiphasing within HE4, with especially a mid-event warming, have been recently reported from the central North Atlantic (Reykjanes Ridge, Jonkers et al., 2010a).

15 In our multiproxy dataset, a typical GSs signature is recorded for HE4, with evidence of significant amounts of melt-water products (high LLG concentrations, low $\delta^{18}\text{O}$ values). Interestingly, a major peak in the ^{XRF}Ca content is recorded in the middle of HE4 (around 39 ka). This peak is quite atypical regarding other GSs which classically record low ^{XRF}Ca values. Regarding data of magnetic properties, this peak finds echoes only in the low field magnetic susceptibility (κ , Fig. 6), suggesting advection of large-sized magnetic grains. Together occurring with moderate values of the ^{XRF}Sr content (not shown here but observable throughout the $[\text{Ti} + \text{Fe}]/[\text{Ca} + \text{Sr}]$ ratio), this anomaly may reflect a detrital origin of carbonates. According to Hemming (2004), high proportions of detrital carbonates characterize IRD sourced from Hudson Strait and Laurentide ice

Ice coupled response during the last glacial

J. Zumaque et al.

Title Page

Abstract

Introduction

Conclusions

References

Tables

Figures



Back

Close

Full Screen / Esc

Printer-friendly Version

Interactive Discussion



sheet. This signal might then have overlapped the European ice sheets one. In this case, changes due to local ice sheets instabilities have probably occurred before the signal that characterizes the destabilization of the LIS, as featured in our record. However, this is not sufficient to suggest a precursor role of the European system (e.g. Scourse et al., 2000) for HE4. It must indeed be noted that European ice sheets finally have had the same behaviour for each GSs throughout MIS3, which attests of their sensitivity, with no evidence of asynchronicity with the LIS. Taking into account the distance between the core MD99-2281 and the Laurentide source, few IRD may have reached the area after crossing the North Atlantic, and are therefore only recorded as exceptional outburst events. This is also observed in the proximal core MD04-2829CQ further south (Fig. 1) which only records LIS-sourced IRD during a 200–300 yr period within HE4 (for the section studied in this work) that might argue for this first hypothesis (Hall et al., 2011). Another possible explanation for the peak of ^{XRF}Ca could also be related to calcite secondary precipitation under anoxic bottom conditions as suggested by several authors in the atypical sedimentological facies of HEs (Auffret et al., 1996; Zaragosi et al., 2001).

An interesting feature during HE4, but also during the others GSs, is the high SSTs during summer (August), up to 4 °C more than modern values, contrasting with the percentages of NPS which then reach nearly 100 % (Fig. 6). This could suggest a strong stratification of the water masses but also emphasizes ecological strategy differences between planktonic foraminifera and dinoflagellates, the later living in the 50 upper meters of the water column while NPS can be mesopelagic (de Vernal et al., 2006; Jonkers et al., 2010b).

6.2.2 Heinrich 3 (HE3)

HE3 is one of the most contentious HEs, especially from a stratigraphic point of view (e.g. Sanchez-Goni and Harrison, 2010), but also because of its atypical low IRD rate (e.g. Bond and Lotti, 1995; Grousset et al., 2001) and its strong European geochemical signature (Snoeckx et al., 1999; Grousset et al., 2000).

Ice coupled response during the last glacial

J. Zumaque et al.

Title Page

Abstract

Introduction

Conclusions

References

Tables

Figures



Back

Close

Full Screen / Esc

Printer-friendly Version

Interactive Discussion



Our data reveal a low concentration of IRD during HE3 with two LLG peaks bracketing the event (Fig. 6), at its onset (32 ka BP) and at its termination (29 ka BP). These two low amplitude peaks correspond also to increases in the Rd / Md and [Ti + Fe] / [Ca + Sr] ratios and to minima in the ^{XRF}Ca , thus reflecting advection of terrigenous material probably related to proximal ice-sheet dynamics. Abundances of NPS follow this bimodal pattern, with two periods marked by quasi-monospecific values. Conversely, dinocyst derived sea-surface conditions show no characteristic excursions at this time, but rather out of phase: sea-ice cover duration increases briefly before the first IRD pulse, and just after the last one, i.e. respectively within GI5 and 4.

A clear rise in the ^{XRF}Ca content is noted in the second part of HE3, coeval with two minor peaks in magnetic concentration. However ^{XRF}Ca values remain under previous GI values. As already introduced for HE4, it is possible that such a rise characterises LIS preferentially detrital sourced material advection.

Bond et al. (1992) hypothesised warmer SSTs in the North Atlantic during HE3, leading to an accelerated melting of icebergs, which thus cannot fully reach the eastern basins of the North-Atlantic. This longitudinal “barrier” was also mentioned by Hemming (2004). If so, the late arrival of this collapse from the North American ice sheets could have led to further destabilization of the European ice sheets (second peak recorded by proxies at the transition to GI4).

From the end of HE3, some changes are taking place. Sea-surface conditions seem to record higher amplitude changes between GIs and GSs, as shown for example in the percentages of NPS or in the MS record. This is also attested by the reconstructed SSTs with extreme oscillations recorded in August and in the sea-ice duration as well.

7 Heterogeneity of the climatic response of the north Atlantic basin during MIS3

Our data set constitutes one of the first multiproxy dataset detailing MIS3 sea-surface paleoenvironments in the area of the eastern Norwegian Sea. Some detailed reconstructions of MIS3 exist further north or further south (e.g., Rasmussen et al., 1996a,

CPD

8, 3043–3091, 2012

Ice coupled response during the last glacial

J. Zumaque et al.

Title Page

Abstract

Introduction

Conclusions

References

Tables

Figures



Back

Close

Full Screen / Esc

Printer-friendly Version

Interactive Discussion



b, 1997, 2002a, b; Rasmussen and Thomsen, 2004, 2008) but only a few have been using the same multiproxy approach. Our reconstructions could be compared to those previously produced by Eynaud et al. (2002), who used the same set of proxies in two marine cores retrieved from the southern Norwegian sea (north of the Faeroe Islands-MD95-2009 and on the Voring plateau-MD95-2010, Fig. 1). Intriguingly, Eynaud et al. (2002) observed an antiphase between sea-surface paleoenvironments (sea ice cover duration, February SST) of the Norwegian Sea and the GIs/GSs atmospheric conditions registered above Greenland (e.g. Dansgaard et al., 1993). Their records demonstrated the establishment of low February SSTs accompanied by a longer sea-ice cover duration in the Norwegian Sea during GIs, whereas the Greenland ice-records testify warm interstadial atmospheric conditions (and vice-versa during GSs). According to Eynaud et al. (2002), this paradox pointed to a decoupling between the North Atlantic eastern and western parts during MIS3, involving past climatic phenomena comparable to the modern North Atlantic Oscillation (“Greenland above/Oslo below normal”, e.g. Bromwich et al., 1999).

Low concentrations of IRD were observed by these authors during HE4, in sharp contrast with what was observed in the temperate North Atlantic (e.g. Cortijo et al., 1997; Hemming, 2004). It further suggests isolation of the Norwegian Sea in terms of response to the climatic variability.

Similar results were obtained by de Vernal et al. (2000, 2001, 2005, 2006) for the Nordic seas with positive SST anomalies (SST above the modern ones) detected during the Last Glacial Maximum. The reconstructed August SSTs on core MD99-2281 during MIS3 show comparable positive anomalies (up to 4 °C) dominating the whole studied period (Fig. 5). These observations could be due to peculiar oceanic conditions developing during MIS3 and strongly related to the dynamics of the proximal ice-sheets. A strong stratification of the water column could have been favoured by partial melting of the ice sheets and thus advection of fresh waters, preferentially during summers. The existence of a strong stratification could justify a rapid warming of “a brackish superficial water lens” generating such an anomaly.

Ice coupled response during the last glacial

J. Zumaque et al.

Title Page

Abstract

Introduction

Conclusions

References

Tables

Figures



Back

Close

Full Screen / Esc

Printer-friendly Version

Interactive Discussion



Ice coupled response during the last glacial

J. Zumaque et al.

Title Page

Abstract

Introduction

Conclusions

References

Tables

Figures

◀

▶

◀

▶

Back

Close

Full Screen / Esc

Printer-friendly Version

Interactive Discussion



The anomalous August SSTs testified a “Norwegian Sea type response” for the summer months (see Eynaud et al., 2002). Late increases of February SST during each GIs furthermore underline some kind of inertia in the sea-surface response of the southern Faeroe domain, thus arguing for a potential influence of the northern Norwegian sector. However, the high concentrations of IRD observed in core MD99-2281 during HE4 (Figs. 6 and 7) suggest that our site also responds synchronously to the temperate North Atlantic, and is thus outside the paradoxical “Nordic Seas” type response.

GI6, 5 and 4 are also paradoxically marked by a higher sea-ice cover duration roughly in antiphase with the percentages of NPS. The same anomaly is observed in the northern core MD95-2010 where interstadial phases over Greenland correspond to a longer sea-ice cover development (Eynaud et al., 2002). We can suggest that from GI6 to GI3, the conditions are so drastic, with proximal European ice sheets reaching their critical maximum size that “our region adopts the same behaviour as the Nordic seas do”. The IRD signal recorded in core MD99-2281 during these last GIs could thus correspond to the one also recorded in core MD95-2010 and could therefore be related to the destabilization of the FIS. It is also worth noting that the ice cover in core MD95-2010 varies between 5 and 8 months yr^{-1} for the GIs, while our core does not record an ice cover exceeding 2 months yr^{-1} during the whole MIS3. It is conceivable however that from GI6, a change in the local sea-surface conditions may have been initiated due to the gradual development of the proximal ice-sheets.

8 The role of european ice sheets on proximal sea-surface paleoenvironments during MIS3

8.1 Ice-sheet dynamics: the MIS3 marine record

In the Faeroe Island area, arrivals of detrital material (IRD) to the ocean were interpreted as proximal European ice sheets sourced: their record throughout MIS3 is continuous and highly sensitive to millennial climatic variability as shown by our data but

also by previous studies in the same sector (e.g., Scourse et al. 2009; Hibbert et al., 2010; Chiverell and Thomas, 2010; Hall et al., 2011). Continental data from the proximal British Isles have shown “ice-free” conditions during MIS 3, as well as in central Scotland, Northern Ireland and the Isle of Man. The BIS extension was then reduced in latitude at that time and mainly located in the north of Scotland, probably with an advance northward and northwestward (Scourse et al., 2009; Chiverell and Thomas, 2010). This configuration could have promoted the development of an ice shelf, feeding a quite constant icebergs calving and contributing to the observed IRD input record in the area. It is not possible from our data to pinpoint the exact source of IRD, however, the large size of the FIS compared to the British one suggests a preferential Fennoscandian source for IRD. Nevertheless, Hall et al. (2011) pointed to a major BIIS contribution in IRD fluxes recorded in core MD04-2829CQ. This latter being located only 100 km (nearly one degree in latitude) southward of core MD99-2281 (Figs. 1 and 7), and furthermore responding in the same way during GSs, i.e. recording higher IRD concentrations, it is thus likely that BIIS derived products may also have reached the site of core MD99-2281.

8.2 The MIS3/MIS2 transition

The MIS3 termination and the beginning of MIS2 are worth to be discussed considering our results. Indeed, changes are taking place at the transition between HE3 and GI4 at 28.9 CAL-ka BP where alternating GIs/GSs sea-surface conditions seem to be more extreme, with marked shifts in SSTs (August especially) and in the sea-ice cover duration. Generally, the MIS3 to MIS2 transition marks conditions that seem progressively more severe in the area, also registering higher frequency and higher amplitude shifts in sea-surface conditions (as deduced from dinocysts). Even if only observed in the last 2000 yr of the sequence, it is clearly expressed throughout all our proxies and could be due to growing European ice sheets, with may be the development of ice-shelves on the continental shelf. In fact, the maximum ice volume which marks the Last Glacial Maximum between 19 and 23 CAL-ka BP (sensu Mix et al., 2001)

Ice coupled response during the last glacial

J. Zumaque et al.

Title Page

Abstract

Introduction

Conclusions

References

Tables

Figures



Back

Close

Full Screen / Esc

Printer-friendly Version

Interactive Discussion



does not necessarily correspond to the maximum geographical extension of each ice sheet, which also evolved independently (e.g., Chiverrell and Thomas, 2010). Indeed, some previous studies have suggested that the BIS advanced between 30 and 25 CAL-ka BP. Hibbert et al. (2010) show that the core MD04-2822 (Fig. 1), located west of the Barra-Donegal Fan, has recorded an increase in IRD at 27.4 CAL-ka BP. The same is observed by Hall et al. (2011) in core MD04-2829CQ, located southeast of the Rosemary Bank, pointing to an increase of the BIIS size after ~ 28 ka BP. Similarly, Knutz et al. (2001) observed in core MD95-2006 (Fig. 1) located in the heart of Barra-Donegal Fan, increases of IRD concentrations (coming from the Tertiary basaltic provinces involving a British source) at about 30 ka, which coincide with the MIS3/MIS2 transition (Hibbert et al., 2010). Scourse et al. (2009) also illustrate an advance in the west of the British ice sheet (BIS) at the Bench level and Rosemary Barra-Donegal Fan just after HE3, at about 29 ka. IRD concentration increases at 27 ka on the Irish western margin and at 25 ka on the Goban Spur characterizing a progressive southward ice-sheet development (Scourse et al., 2009). This progression also affected the north-eastern British ice-margin. Actually, geomorphological studies conducted in the North Sea Basin and Norwegian Channel (Bradwell et al., 2007; Bradwell et al., 2008) have suggested confluent British and Fennoscandian ice sheets during this period. This coalescence associated to a major paleo-ice-stream system purging the “ice-bridge” (Fig. 7, Bradwell et al., 2008), might have alimented one of the most important ice shelves of the European margin. Core MD99-2281 which is located in the axis of two of these ice streams (Fig. 7, Bradwell et al., 2008), the Minch paleo-ice stream and the North Sea paleo-ice stream, may have thus recorded destabilizations of this system.

9 Conclusions

The present multiproxy study, conducted on the MIS3 section of core MD99-2281 located off SW Faeroes, provides a new and unique set of data, expanding our knowledge about the evolution of NW Europe oceanic palaeoenvironments during the last

CPD

8, 3043–3091, 2012

Ice coupled response during the last glacial

J. Zumaque et al.

Title Page

Abstract

Introduction

Conclusions

References

Tables

Figures

◀

▶

◀

▶

Back

Close

Full Screen / Esc

Printer-friendly Version

Interactive Discussion



glacial. Our results demonstrate that the marine reservoir echoes directly to the rapid climate changes detected in the atmosphere (Greenland $\delta^{18}\text{O}$ records). Deep-sea parameters (deduced from magnetic properties) show the same general pattern as along the main path of the NADW in the subpolar North Atlantic (e.g. Kissel et al., 1999).

5 These parameters were therefore used to tie the surface multi-proxy records on the millennial climatic variability which characterises the MIS3. Results demonstrate that the surface oceanic response of the area was strongly influenced by the dynamics of the proximal ice sheets. Data identify a much more important calving of European ice sheets during GSs and milder conditions during GIs, with however late and terminal warmings (rather occurring at the transition towards GSs). Large amount of detrital material (including IRD) are recovered for each GSs and are likely to have a European origin, and more precisely, a BIS source. Sea-surface paleoenvironmental conditions during HEs are quite similar to those recorded during other GSs, except for some indices of a probable larger Laurentide influence (both within HE4 and HE3).

10
15 Marked paleoenvironmental changes seem to occur after 28.9 CAL-ka BP (post-HE3 record). This reinforces previous findings which hypothesise the existence of an ice bridge between the British and the Fennoscandian ice sheets, which would have potentially directly influenced our site of study after HE3. The coalescence of the FIS and BIS could have fed an ice shelf over/or proximal to the site of core MD99-2281: the high
20 variability of sea-surface palaeoenvironments detected in our data could support the presence of such a structure. It implies that the glacial advance of the British ice sheet toward its maximum extension was probably reached before the LGM. Further studies are needed to better constrain this late history of the British ice sheet and its relation to the dynamics of its surrounding ice-shelves.

25 *Acknowledgements.* The authors are grateful to IPEV, the captain and the crew of the R/V *Marion Dufresne* and the scientific team of the GINNA cruise (Labeyrie et al., 1999). We wish to thank Mr. Y. Balut for his assistance at sea. J. St. Paul, O. Ther, M.-H. Castera and M. Georget provided invaluable technical assistance. We acknowledge financial support by the ARTEMIS ¹⁴C Accelerator Mass Spectrometry French project. Part of the analyses conducted on MD99-

Ice coupled response during the last glacial

J. Zumaque et al.

Title Page

Abstract

Introduction

Conclusions

References

Tables

Figures



Back

Close

Full Screen / Esc

Printer-friendly Version

Interactive Discussion



2281 was supported by the French INSU (Institut National des Sciences de l'Univers) program LEFE/EVE (Les enveloppes fluides et l'environnement/Evolution et variabilité du climat à l'échelle globale) "RISCC: Rôle des Ice-Shelves dans le Changement Climatique". The magnetic analyses at LSCE were made with the help of Camille Wandres on laboratory funds from the French Atomic Energy Commission and from the CNRS.

This is an U.M.R./EPOC 5805 (Université Bordeaux I-C.N.R.S.) contribution No and LSCE contribution No.



The publication of this article is financed by CNRS-INSU.

References

- Alley, R. B., Clark, P. U., Keigwin, L. D., and Webb, R. S.: Making sense of millennial-scale climate change, in: Mechanisms of global climate change at millennial time scales, edited by: Clark, P. U., Webb, R. S., and Keigwin, L. D., Geophys. Monogr., 112, 385–394, 1999.
- Alvarez-Solas, J., Charbit, S., Ramstein, G., Paillard, D., Dumas, C., Ritz, C., and Roche, D. M.: Millennial-scale oscillations in the southern ocean in response to atmospheric CO₂ increase, Global Planet. Change, 76, 128–136, 2010.
- Auffret, G. A., Boelaert, A., Vergnaud-Grazzini, C., Müller, C., and Kerbrat, R.: Identification of Heinrich layers in core ks 01 north-eastern Atlantic (46° N, 17° W), implications for their origin, Mar. Geol., 131, 5–20, 1996.
- Austin, W. E. N. and Hibbert, F. D.: Tracing time in the ocean: A brief review of chronological constraints (60–8 kyr) on north atlantic marine event-based stratigraphies, Quaternary Sci. Rev., 36, 28–37, 2012.
- Ballini, M., Kissel, C., Colin, C., and Richter, T.: Deep-water mass source and dynamic associated with rapid climatic variations during the last glacial stage in the north Atlantic: a

Ice coupled response during the last glacial

J. Zumaque et al.

Title Page

Abstract

Introduction

Conclusions

References

Tables

Figures



Back

Close

Full Screen / Esc

Printer-friendly Version

Interactive Discussion



Ice coupled response during the last glacial

J. Zumaque et al.

Title Page

Abstract

Introduction

Conclusions

References

Tables

Figures

◀

▶

◀

▶

Back

Close

Full Screen / Esc

Printer-friendly Version

Interactive Discussion



multi-proxy investigation of the detrital fraction of deep-sea sediments, *Geochem. Geophys. Geos.*, 7, Q02N01, doi:10.1029/2005GC001070, 2006.

Bard, E.: Geochemical and geophysical implications of the radiocarbon calibration, *Geochim. Cosmochim. Ac.*, 62, 2025–2038, 1998.

5 Bard, E., Arnold, M., Hamelin, B., Tisnerat-Laborde, N., and Cabioch, G.: Radiocarbon calibration by means of mass spectrometric $^{230}\text{Th}/^{234}\text{U}$ and ^{14}C ages of corals. An updated data base including samples from Barbados, Mururoa and Tahiti, *Radiocarbon*, 40, 1085–1092, 1998.

Berger, A.: Les causes astronomiques des grandes variations du climat au Quaternaire, *C.R. Palevol.*, 5, 21–26, 2006.

10 Bett, B. J.: UK atlantic margin environmental survey: introduction and overview of bathyal benthic ecology, *Cont. Shelf Res.*, 21, 917–956, 2001.

Bogus, K. A., Zonneveld, K. A. F., Fischer, D., Kasten, S., Bohrmann, G., and Versteegh, G. J. M.: The effect of meter-scale lateral oxygen gradients at the sediment-water interface on selected organic matter based alteration, productivity and temperature proxies, *Biogeosciences*, 9, 1553–1570, doi:10.5194/bg-9-1553-2012, 2012.

15 Boldreel, L. O., Andersen, M. S., and Kuijpers, A.: Neogene seismic facies and deep-water gateways in the faeroe bank area, ne atlantic, *Mar. Geol.*, 152, 129–140, 1998.

Bond, G. and Lotti, R.: Iceberg discharges into the north Atlantic on millennial time scales during the last glaciation, *Science*, 267, 1005–1010, 1995.

20 Bond, G., Heinrich, H., Broecker, W., Labeyrie, L., McManus, J., Andrews, J., Huon, S., Jantschik, R., Clasen, S., Simet, C., Tedesco, C., Klas, M., Bonani, G., and Ivy, S.: Evidence for massive discharges of icebergs into the north Atlantic ocean during the last glacial period, *Nature*, 360, 246–249, 1992.

25 Boulay, S.: Variabilité climatique rapide en atlantique nord – un potentiel de réponses: La carotte MD99-2281 (sud des îles faeroes), MASTER Université Paris-Sud, Orsay, 2000.

Bourillet, J.-F., Reynaud, J. Y., Baltzer, A., and Zaragosi, S.: The “fleuve manche”: The submarine sedimentary features from the outer shelf to the deep-sea fans, *J. Quaternary Sci.*, 18, 261–282, 2003.

30 Brachfeld, S., Kissel, C., Laj, C., and Mazaud, A.: Behavior of u-channels during acquisition and demagnetization of remanence: Implications for paleomagnetic and rock-magnetic measurements, *Phys. Earth Planet. In.*, 145, 1–8, 2004.

Ice coupled response during the last glacial

J. Zumaque et al.

Title Page

Abstract

Introduction

Conclusions

References

Tables

Figures

◀

▶

◀

▶

Back

Close

Full Screen / Esc

Printer-friendly Version

Interactive Discussion



- Bradwell, T., Stoker, M., and Larter, R.: Geomorphological signature and flow dynamics of the minch palaeo-ice stream, northwest Scotland, *J. Quaternary Sci.*, 22, 609–617, 2007.
- Bradwell, T., Stoker, M., Golledge, N. R., Wilson, C. K., Merritt, J. W., Long, D., Everest, J. D., Hestvik, O. B., Stevenson, A. G., Hubbard, A. L., Finlayson, A. G., and Mathers, H. E.: The northern sector of the last British ice sheet: Maximum extent and demise, *Earth-Sci. Rev.*, 88, 207–226, 2008.
- Broecker, W. S.: Thermohaline circulation, the Achilles heel of our climate system: Will man-made CO₂ upset the current balance?, *Science*, 278, 1582–1588, 1997.
- Broecker, W. S.: Does the trigger for abrupt climate change reside in the ocean or in the atmosphere?, *Science*, 300, 1519–1522, 2003.
- Bromwich, D. H., Chen, Q.-S., Li, Y., and Cullather, R. I.: Precipitation over Greenland and its relation to the north Atlantic oscillation, *J. Geophys. Res.*, 104, 22103–22115, 1999.
- Chiverrell, R. C. and Thomas, G. S. P.: Extent and timing of the last glacial maximum (LGM) in Britain and Ireland: A review, *J. Quaternary Sci.*, 25, 535–549, 2010.
- Clark, P. U., Pisias, N. G., Thomas, F., Stocker, T. F., and Weaver, A. J.: The role of the thermohaline circulation in abrupt climate change, *Nature*, 415, 863–869, 2002.
- Cortijo, E., Labeyrie, L., Vidal, L., Vautravers, M., Chapman, M., Duplessy, J. C., Elliot, M., Arnold, M., Turon, J. L., and Auffret, G. A.: Changes in sea surface hydrology associated with Heinrich event 4 in the north Atlantic ocean between 40° and 60° N, *Earth Planet. Sc. Lett.*, 146, 29–45, 1997.
- Dansgaard, W., Johnsen, S. J., Clausen, H. B., Dahl-Jensen, D., Gundestrup, N. S., Hammer, C. U., Hvidberg, C. S., Steffensen, J. P., Sveinbjörnsdóttir, A. E., Jouzel, J., and Bond, G.: Evidence for general instability of past climate from 250-kyr ice-core record, *Nature*, 364, 218–220, 1993.
- De Leeuw, J. W., Versteegh, G. J. M., and Van Bergen, P. F.: Biomacromolecules of algae and plants and their fossil analogues, *Plant Ecol.*, 182, 209–233, 2006.
- de Vernal, A.: Dino8 workshop: Quantitative treatments for paleoceanographical reconstructions based on dinocyst assemblages, *Dino8 conference*, Montréal, 2008.
- de Vernal, A. and Marret, F.: Chapter nine: Organic-walled dinoflagellate cysts: tracers of sea-surface conditions, in: *Developments in marine geology*, Elsevier Edn., edited by: Hillaire-Marcel, C. and de Vernal, A., 371–408, 2007.

Ice coupled response during the last glacial

J. Zumaque et al.

Title Page

Abstract

Introduction

Conclusions

References

Tables

Figures

◀

▶

◀

▶

Back

Close

Full Screen / Esc

Printer-friendly Version

Interactive Discussion



- de Vernal, A. and Rochon, A.: Dinocysts as tracers of sea-surface conditions and sea-ice cover in polar and subpolar environments, IOP Conference Series: Earth and Environmental Science, 2011.
- de Vernal, A., Henry, M., and Bilodeau, G.: Techniques de préparation et d'analyse en micropaléontologie, Les cahiers du GEOTOP, 3, 1–29, 1996.
- de Vernal, A., Hillaire-Marcel, C., Turon, J. L., and Matthiessen, J.: Reconstruction of sea-surface temperature, salinity, and sea-ice cover in the northern north Atlantic during the last glacial maximum based on dinocyst assemblages, Can. J. Earth Sci., 37, 725–750, 2000.
- de Vernal, A., Henry, M., Matthiessen, J., Mudie, P. J., Rochon, A., Boessenkool, K. P., Eynaud, F., Grøsfjeld, K., Guiot, J., Hamel, D., Harland, R., Head, M. J., Kunz-Pirrung, M., Levac, E., Loucheur, V., Peyron, O., Pospelova, V., Radi, T., Turon, J. L., and Voronina, E.: Dinoflagellate cyst assemblages in surface sediments of the Laptev sea region (Arctic Ocean) and their relationship to hydrographic conditions, J. Quaternary Sci., 16, 637–649, 2001.
- de Vernal, A., Eynaud, F., Henry, M., Hillaire-Marcel, C., Londeix, L., Mangin, S., Matthiessen, J., Marret, F., Radi, T., Rochon, A., Solignac, S., and Turon, J. L.: Reconstruction of sea-surface conditions at middle to high latitudes of the northern hemisphere during the last glacial maximum (LGM) based on dinoflagellate cyst assemblages, Quaternary Sci. Rev., 24, 897–924, 2005.
- de Vernal, A., Rosell-Melé, A., Kucera, M., Hillaire-Marcel, C., Eynaud, F., Weinelt, M., Dokken, T., and Kageyama, M.: Comparing proxies for the reconstruction of LGM sea-surface conditions in the northern north Atlantic, Quaternary Sci. Rev., 25, 2820–2834, 2006.
- Dickson, R. R., Meincke, J., Malmberg, S.-A., and Lee, A. J.: The “Great salinity anomaly” in the northern north Atlantic 1968–1982, Prog. Oceanogr., 20, 103–151, 1988.
- Ehlers, J. and Gibbard, P.: Quaternary glaciations – extent and chronology part I: Europe, in: Developments in quaternary science, No. 2, Publisher Elsevier, Amsterdam, 488 pp., 2004.
- Elliot, M., Labeyrie, L., Dokken, T., and Manthé, S.: Coherent patterns of ice-rafted debris deposits in the Nordic regions during the last glacial (10–60 ka), Earth Planet. Sc. Lett., 194, 151–163, 2001.
- Ericson, D. B.: Coiling direction of *Globigerina pachyderma* as a climatic index, Science, 130, 219–220, 1959.
- Evitt, W. R.: Sporopollenin dinoflagellate cysts: their morphology and interpretation, AASP Foundation, 1985.

Ice coupled response during the last glacial

J. Zumaque et al.

Title Page

Abstract

Introduction

Conclusions

References

Tables

Figures

◀

▶

◀

▶

Back

Close

Full Screen / Esc

Printer-friendly Version

Interactive Discussion



Eynaud, F.: Kystes de dinoflagellés et evolution paléoclimatique et paléohydrologique de l'atlantique nord au cours du dernier cycle climatique du quaternaire, Université de Bordeaux I, 291 pp., 1999.

Eynaud, F., Turon, J. L., Matthiessen, J., Kissel, C., Peypouquet, J. P., De Vernal, A., and Henry, M.: Norwegian sea-surface palaeoenvironments of marine oxygen-isotope state 3: the paradoxical response of dinoflagellate cysts, *J. Quaternary Sci.*, 17, 349–359, 2002.

Eynaud, F., De Abreu, L., Voelker, A., Schönfeld, J., Salgueiro, E., Turon, J. L., Penaud, A., Toucanne, S., Naughton, F., Sanchez Goni, M. F., Malaizé, B., and Cacho, I.: Position of the polar front along the western Iberian margin during key cold episodes of the last 45 ka, *Geochem. Geophys. Geosy.*, 10, Q07U05, doi:10.1029/2009GC002398, 2009.

Fogelqvist, E., Blindheim, J., Tanhua, T., Østerhus, S., Buch, E., and Rey, F.: Greenland-Scotland overflow studied by hydro-chemical multivariate analysis, *Deep-Sea Res.-Pt. I*, 50, 73–102, 2003.

Grosswald, M. G. and Hughes, T. J.: The Russian component of an Arctic ice sheet during the Last Glacial Maximum, *Quaternary Sci. Rev.*, 21, 121–146, doi:10.1016/S0277-3791(01)00078-6, 2002.

Grousset, F. E., Pujol, C., Labeyrie, L., Auffret, G. A., and Boelaert, A.: Were the North Atlantic Heinrich events triggered by the behavior of the European ice sheet?, *Geology*, 28, 123–126, 2000.

Grousset, F. E., Cortijo, E., Huon, S., Hervé, L., Richter, T., Burdloff, D., Duprat, J., and Weber, O.: Zooming in on Heinrich layers, *Paleoceanography*, 16, 240–259, 2001.

Guiot, J. and de Vernal, A.: Chapter thirteen transfer functions: Methods for quantitative paleoceanography based on microfossils, in: *Developments in marine geology*, edited by: Hillaire-Marcel, C. and de Vernal, A., 523–563, 2007.

Guiot, J. and de Vernal, A.: Is spatial autocorrelation introducing biases in the apparent accuracy of paleoclimatic reconstructions?, *Quaternary Sci. Rev.*, 30, 1965–1972, 2011a.

Guiot, J. and de Vernal, A.: QSR correspondence “Is spatial autocorrelation introducing biases in the apparent accuracy of palaeoclimatic reconstructions?” Reply to Telford and Birks, *Quaternary Sci. Rev.*, 30, 3214–3216, 2011b.

Hall, I. R., Colmenero-Hidalgo, E., Zahn, R., Peck, V. L., and Hemming, S. R.: Centennial to millennial-scale ice-ocean interactions in the subpolar northeast Atlantic 18 to 41 ka ago, *Paleoceanography*, 26, PA2224 doi:10.1029/2010PA002084, 2011.

Ice coupled response during the last glacial

J. Zumaque et al.

Title Page

Abstract

Introduction

Conclusions

References

Tables

Figures



Back

Close

Full Screen / Esc

Printer-friendly Version

Interactive Discussion



- Harland, R.: Distribution maps of recent dinoflagellate cysts in bottom sediments from the north Atlantic Ocean and adjacent seas, *Palaeontology*, 26, 321–387, 1983.
- Heinrich, H.: Origin and consequences of cyclic ice rafting in the northeast Atlantic Ocean during the past 130,000 years, *Quaternary Res.*, 29, 142–152, 1988.
- 5 Hemming, S. R.: Heinrich events: massive late Pleistocene detritus layers of the north Atlantic and their global climate imprint, *Rev. Geophys.*, 42, 1001–1043, 2004.
- Hibbert, F. D., Austin, W. E. N., Leng, M. J., and Gatliff, R. W.: British ice sheet dynamics inferred from north Atlantic ice-rafted debris records spanning the last 175 000 years, *J. Quaternary Sci.*, 25, 461–482, 2010.
- 10 Holliday, N. P., Pollard, R. T., Read, J. F., and Leach, H.: Water mass properties and fluxes in the Rockall trough, 1975–1998, *Deep-Sea Res.-Pt. I*, 47, 1303–1332, 2000.
- Howe, J. A., Stoker, M. S., Masson, D. G., Pudsey, C. J., Morris, P., Larter, R. D., and Bulat, J.: Seabed morphology and the bottom-current pathways around rosemary bank seamount, northern Rockall trough, north Atlantic, *Mar. Petrol. Geol.*, 23, 165–181, 2006.
- 15 Hulbe, C. L., MacAyeal, D. R., Denton, G. H., Kleman, J., and Lowell, T. V.: Catastrophic ice shelf breakup as the source of Heinrich event icebergs, *Paleoceanography*, 19, PA1004, doi:10.1029/2003PA000890, 2004.
- Imbrie, J., Berger, A., Boyle, E. A., Clemens, S. C., Duffy, A., Howard, W. R., Kukla, G., Kutzbach, J., Martinson, D. G., McIntyre, A., Mix, A. C., Molfino, B., Morley, J. J., Peterson, L. C., Pisias, N. G., Prell, W. L., Raymo, M. E., Shackleton, N. J., and Toggweiler, J. R.: On the structure and origin of major glaciation cycles: 2. The 100,000 year cycle, *Paleoceanography*, 8, 699–735, 1993.
- 20 Jonkers, L., Moros, M., Prins, M. A., Dokken, T., Andersson Dahl, C., Dijkstra, N., Perner, K., and Brummer, G.-J. A.: A reconstruction of sea surface warming in the northern north Atlantic during MIS3 ice-rafting events, *Quaternary Sci. Rev.*, 29, 1791–1800, 2010a.
- 25 Jonkers, L., Brummer, G.-J. A., Peeters, F. J. C., van Aken, H. M., and Femke De Jong, M.: Seasonal stratification, shell flux, and oxygen isotope dynamics of left coiling *N. pachyderma* and *T. quinqueloba* in the western subpolar north Atlantic, *Paleoceanography*, 25, PA2204, doi:10.1029/2009PA001849, 2010b.
- 30 Kiefer, T., Lorenz, S., Schulz, M., Lohmann, G., Sarnthein, M., and Elderfield, H.: Response of precipitation over Greenland and the adjacent ocean to the north pacific warm spells during Dansgaard-Oeschger stadials, *Terra Nova*, 14, 295–300, 2002.

Ice coupled response during the last glacial

J. Zumaque et al.

Title Page

Abstract

Introduction

Conclusions

References

Tables

Figures

◀

▶

◀

▶

Back

Close

Full Screen / Esc

Printer-friendly Version

Interactive Discussion



- Kissel, C., Laj, C., Labeyrie, L., Dokken, T., Voelker, A., and Blamart, D.: Rapid climatic variations during marine isotopic stage 3: Magnetic analysis of sediments from Nordic seas and north Atlantic, *Earth Planet. Sc. Lett.*, 171, 489–502, 1999.
- 5 Knutz, P. C., Austin, W. E. N., and Jones, E. J. W.: Millennial-scale depositional cycles related to British ice sheet variability and north Atlantic paleocirculation since 45 kyr B.P., *Barra fan, UK Margin, Paleocceanography*, 16, 53–64, 2001.
- Kucera, M.: Chapter six: planktonic foraminifera as tracers of past oceanic environments, in: *Developments in Marine Geology*, 213–262, 2007.
- 10 Kucera, M., Rosell-Melé, A., Schneider, R., Waelbroeck, C., and Weinelt, M.: Multiproxy approach for the reconstruction of the glacial ocean surface (MARGO), *Quaternary Sci. Rev.*, 24, 813–819, 2005.
- Kuijpers, A., Andersen, M. S., Kenyon, N. H., Kunzendorf, H., and van Weering, T. C. E.: Quaternary sedimentation and Norwegian sea overflow pathways around bill bailey bank, north-eastern Atlantic, *Mar. Geol.*, 152, 101–127, 1998.
- 15 Kuijpers, A., Hansen, B., Huhnerbach, V., Larsen, B., Nielsen, T., and Werner, F.: Norwegian sea overflow through the Faroe-Shetland gateway as documented by its bedforms, *Mar. Geol.*, 188, 147–164, 2002.
- Labeyrie, L., Cortijo, E., and Jansen, E.: *Rapport scientifique de la mission INTERPOLE MD99-114/812 IMAGES V*, Brest, 1999.
- 20 Laj, C., Kissel, C., Mazaud, A., Channell, J. E. T., and Beer, J.: North Atlantic Paleointensity Stack since 75 ka (NAPIS-75) and the duration of the Laschamp event, *Philos. T. Roy. Soc. Lond.*, 358, 1009–1025, 2000.
- Lang, C., Leuenberger, M., Schwander, J., and Johnsen, S.: 16 °C rapid temperature variation in central Greenland 70,000 years ago, *Science*, 1286, 934–937, 1999.
- 25 Larsen, K. M. H., Hansen, B., and Svendsen, H.: Faroe shelf water, *Cont. Shelf Res.*, 28, 1754–1768, 2008.
- Larsen, K. M. H., Hansen, B., and Svendsen, H.: The Faroe shelf front: Properties and exchange, *J. Marine Syst.*, 78, 9–17, 2009.
- Lericolais, G., Auffret, J.-P., and Bourillet, J.-F.: The Quaternary Channel River: seismic stratigraphy of its palaeo-valleys and deeps, *J. Quaternary Sci.*, 18, 245–260, 2003.
- 30 Marret, F. and Zonneveld, K. A. F.: Atlas of modern organic-walled dinoflagellate cyst distribution, *Rev. Palaeobot. Palyno.*, 125, 1–200, 2003.

Ice coupled response during the last glacial

J. Zumaque et al.

Title Page

Abstract

Introduction

Conclusions

References

Tables

Figures



Back

Close

Full Screen / Esc

Printer-friendly Version

Interactive Discussion



- Martinson, D. G., Pisias, N. G., Hays, J. D., Imbrie, J., Moore Jr., T. C., and Shackleton, N. J.: Age dating and the orbital theory of the ice ages: Development of a high-resolution 0 to 300,000-year chronostratigraphy, *Quaternary Res.*, 27, 1–29, 1987.
- Masson, D. G., Howe, J. A., and Stoker, M. S.: Bottom-current sediment waves, sediment drifts and contourites in the northern Rockall trough, *Mar. Geol.*, 192, 215–237, 2002.
- Matthiessen, J., Kunz-Pirrung, M., and Mudie, P. J.: Freshwater chlorophycean algae in recent marine sediments of the Beaufort, Laptev and Kara seas (Arctic ocean) as indicators of river runoff, *Int. J. Earth Sci.*, 89, 470–485, 2000.
- Ménot, G., Bard, E., Rostek, F., Weijers, J. W. H., Hopmans, E. C., Schouten, S., and Sinninghe-Damsté, J. S.: Early reactivation of European rivers during the last deglaciation, *Science*, 313, 1623–1625, 2006.
- Mertens, K. N., Verhoeven, K., Verleye, T., Louwye, S., Amorim, A., Ribeiro, S., Deaf, A. S., Harding, I., De Schepper, S., Kodrans-Nsiah, M., de Vernal, A., Radi, T., Dybkjaer, K., Poulsen, N. E., Feist-burkhardt, S., Chitolie, J., González Arango, C., Heilmann-Clausen, C., Londeix, L., Turon, J.-L., Marret, F., Matthiessen, J., McCarthy, F. M. G., Prasad, V., Pospelova, V., Kyffin Hughes, J. E., Riding, J. B., Rochon, A., Sangiorgi, F., Welters, N., Sinclair, N., Thun, C., Soliman, A., Van Nieuwenhove, N., Vink, A., and Young, M.: Determining the absolute abundance of dinoflagellate cysts in recent marine sediments: The *Lycopodium* marker-grain method put to the test, *Rev. Palaeobot. Palyno.*, 157, 238–252, 2009.
- Mix, A. E., Bard, E., and Schneider, R.: Environmental processes of the ice age: Land, ocean, glacier (EPILOG), *Quaternary Sci. Rev.*, 20, 627–657, 2001.
- Mojtahid, M., Eynaud, F., Zaragosi, S., Scourse, J., Bourillet, J. F., and Garlan, T.: Palaeoclimatology and palaeohydrography of the glacial stages on Celtic and Armorican margins over the last 360 000 yrs, *Mar. Geol.*, 224, 57–82, 2005.
- New, A. L. and Smythe-Wright, D.: Aspects of the circulation in the Rockall trough, *Cont. Shelf Res.*, 21, 777–810, 2001.
- Penaud, A.: Interactions climatiques et hydrologiques du système Méditerranée/ Atlantique au Quaternaire, PhD thesis, Bordeaux 1, 2009.
- Penaud, A., Eynaud, F., Turon, J. L., Zaragosi, S., Marret, F., and Bourillet, J. F.: Interglacial variability (MIS 5 and MIS 7) and dinoflagellate cyst assemblages in the Bay of Biscay (north Atlantic), *Mar. Micropaleontol.*, 68, 136–155, 2008.
- Penaud, A., Eynaud, F., Turon, J. L., Zaragosi, S., Malaizé, B., Toucanne, S., and Bourillet, J. F.: What forced the collapse of European ice sheets during the last two glacial periods

Ice coupled response during the last glacial

J. Zumaque et al.

Title Page

Abstract

Introduction

Conclusions

References

Tables

Figures

◀

▶

◀

▶

Back

Close

Full Screen / Esc

Printer-friendly Version

Interactive Discussion



(150 ka B.P. and 18 ka cal B.P.)? Palynological evidence, *Palaeogeogr. Palaeoclimatol.*, 281, 66–78, 2009.

Platov, G. A.: Numerical modeling of the arctic ocean deepwater formation: Part II. Results of regional and global experiments, *Izvestiya, Atmos. Ocean. Phys.*, 47, 377–392, 2011.

5 Rahmstorf, S.: Ocean circulation and climate during the past 120,000 years, *Nature*, 419, 207–214, 2002.

Rasmussen, S. O., Seierstad, I. K., Andersen, K. K., Bigler, M., Dahl-Jansen, D., and Johnsen, S. J.: Synchronization of the NGRIP, GRIP, and GISP2 ice cores across MIS 2 and palaeoclimatic implications, *Quaternary Sci. Rev.*, 27, 18–28, 2008.

10 Rasmussen, T. L. and Thomsen, E.: The role of the north Atlantic drift in the millennial timescale glacial climate fluctuations, *Palaeogeogr. Palaeoclimatol.*, 210, 101–116, 2004.

Rasmussen, T. L. and Thomsen, E.: Warm Atlantic water inflow to the Nordic seas 34–10 ka calibrated ka BP, *Paleoceanography*, 23, PA1201, doi:10.1029/2007PA001453, 2008.

15 Rasmussen, T. L., Vanweering, T. C. E., and Labeyrie, L.: High resolution stratigraphy of the Faeroe-Shetland channel and its relation to north Atlantic paleoceanography: The last 87 kyr, *Mar. Geol.*, 131, 75–88, 1996a.

Rasmussen, T. L., Thomsen, E., Vanweering, T. C. E., and Labeyrie, L.: Rapid changes in surface and deep water conditions at the Faeroe margin during the last 58,000 years, *Paleoceanography*, 11, 757–771, 1996b.

20 Rasmussen, T. L., Van weering, T. C. E., and Labeyrie, L.: Climatic instability, ice sheets and ocean dynamics at high northern latitudes during the last glacial period (58–10 ka BP), *Quaternary Sci. Rev.*, 16, 71–80, 1997.

25 Rasmussen, T. L., Thomsen, E., Troelstra, S. R., Kuijpers, A., and Prins, M. A.: Millennial-scale glacial variability versus Holocene stability: Changes in planktic and benthic foraminifera faunas and ocean circulation in the north Atlantic during the last 60000 years, *Mar. Micropaleontol.*, 47, 143–176, 2002a.

30 Rasmussen, T. L., Bäckström, D., Heinemeier, J., Klitgaard-Kristensen, D., Knutz, P. C., Kuijpers, A., Lassen, S., Thomsen, E., Troelstra, S. R., and van Weering, T. C. E.: The faeroe-shetland gateway: Late quaternary water mass exchange between the nordic seas and the northeastern atlantic, *Mar. Geol.*, 188, 165–192, 2002b.

Richter, T. O., Van Der Gaast, S., Koster, B., Vaars, A., Gieles, R., de Stigter, H. C., de Haas, H., and Van Weering, T. C. E.: The AVAATECH XRF core scanner: Technical description and

Ice coupled response during the last glacial

J. Zumaque et al.

Title Page

Abstract

Introduction

Conclusions

References

Tables

Figures



Back

Close

Full Screen / Esc

Printer-friendly Version

Interactive Discussion



applications to NE Atlantic sediments, in: *New techniques in sediment core analysis*, edited by: Rothwell, R. G., Geol. Soc. SP, London, 39–50, 2006.

Roche, D. M., Wiersma, A. P., and Renssen, H.: A systematic study of the impact of freshwater pulses with respect to different geographical locations, *Clim. Dynam.*, 34, 997–1013, 2010.

5 Rochon, A., de Vernal, A., Turon, J.-L., Matthiessen, J., and Head, M. J.: Recent dinoflagellate cysts of the north Atlantic ocean and adjacent seas in relation to sea-surface parameters, *American Association of Stratigraphic Palynologists Foundation, AASP Contribution Series*, 35, 152 pp., 1999a.

10 Rochon, A., de Vernal, A., Turon, J.-L., Matthiessen, J., and Head, M. J.: Distribution of dinoflagellate cysts in surface sediments from the north Atlantic ocean and adjacent basins and quantitative reconstruction of sea-surface parameters, in: *AASP Special Pub.*, 146 pp., 1999b.

Rochon, A., Eynaud, F., and de Vernal, A.: Dinocysts as tracers of hydrographical conditions and productivity along the ocean margins: Introduction, *Mar. Micropaleontol.*, 68, 1–5, 2008.

15 Ruddiman, W. F.: Late quaternary deposition of ice-rafted sand in the subpolar north Atlantic (LAT 40° to 65° N), *Geol. Soc. Am. Bull.*, 88, 1813–1827, 1977.

Sánchez Goñi, M. F. and Harrison, S. P.: Global patterns of vegetation response to millennial-scale variability and rapid climate change during the last glacial period, *Quaternary Sci. Rev.*, 29, 2957–2980, 2010.

20 Sánchez-Goñi, M. F., Landais, A., Fletcher, W. J., Naughton, F., Desprat, S., and Duprat, J.: Contrasting impacts of dansgaard-oeschger events over a western european latitudinal transect modulated by orbital parameters, *Quaternary Sci. Rev.*, 27, 1136–1151, 2008.

Schulz, M.: On the 1470-year pacing of Dansgaard-Oeschger warm events, *Paleoceanography*, 17, 1014, doi:10.1029/2000PA000571, 2002.

25 Scourse, J. D., Hall, I. R., McCave, I. N., Young, J. R., and Sugdon, C.: The origin of Heinrich layers: Evidence from H2 for European precursor events, *Earth Planet. Sc. Lett.*, 182, 187–195, 2000.

Scourse, J. D., Haapaniemi, A. L., Colmenero-Hidalgo, E., Peck, V. L., Hall, I. R., Austin, W. E. N., Knutz, P. C., and Zahn, R.: Growth, dynamics and deglaciation of the last British-Irish ice sheet: The deep-sea ice rafted detritus record, *Quaternary Sci. Rev.*, 28, 3066–3084, 2009.

30 Severinghaus, J. P. and Brook, E. J.: Abrupt climate change at the end of the last glacial period inferred from trapped air in polar ice, *Science*, 286, 930–934, 1999.

Ice coupled response during the last glacial

J. Zumaque et al.

Title Page

Abstract

Introduction

Conclusions

References

Tables

Figures

◀

▶

◀

▶

Back

Close

Full Screen / Esc

Printer-friendly Version

Interactive Discussion



- Snoeckx, H., Grousset, F. E., Revel, M., and Boelaert, A.: European contribution of ice-rafted sand to Heinrich layers H3 and H4, *Mar. Geol.*, 158, 197–208, 1999.
- Stoner, J. S., Channell, J. E. T., Hillaire-Marcel, C., and Kissel, C.: Geomagnetic paleointensity and environmental record from Labrador sea core MD95-2024: Global marine sediment and ice core chronostratigraphy for the last 110 kyr, *Earth Planet. Sc. Lett.*, 183, 161–177, 2000.
- Stokes, C. R. and Clark, C. D.: Palaeo-ice streams, *Quaternary Sci. Rev.*, 20, 1437–1457, 2001.
- Svensson, A., Andersen, K. K., Bigler, M., Clausen, H. B., Dahl-Jensen, D., Davies, S. M., Johnsen, S. J., Muscheler, R., Parrenin, F., Rasmussen, S. O., Röthlisberger, R., Seierstad, I., Steffensen, J. P., and Vinther, B. M.: A 60 000 year Greenland stratigraphic ice core chronology, *Clim. Past*, 4, 47–57, doi:10.5194/cp-4-47-2008, 2008.
- Toucanne, S., Zaragosi, S., Bourillet, J. F., Marieu, V., Cremer, M., Kageyama, M., Van Vliet-Lanoé, B., Eynaud, F., Turon, J. L., and Gibbard, P. L.: The first estimation of fleuve manche palaeoriver discharge during the last deglaciation: Evidence for Fennoscandian ice sheet meltwater flow in the English channel ca 20–18 ka ago, *Earth Planet. Sc. Lett.*, 290, 459–473, 2010.
- Versteegh, G. J. M., Blokker, P. K. B., Harding, I., Lewis, J., Oltmanns, S., Rochon, A., and Zonneveld, K. A. F.: Infra red spectroscopy, flash pyrolysis, thermally assisted hydrolysis and methylation (THM) in the presence of tetramethylammonium hydroxide (TMAH) of cultured and sediment-derived *Lingulodinium polyedrum* (Dinoflagellata) cyst walls, *Org. Geochem.*, 43, 92–102, 2012.
- Voelker, A. H. L.: Global distribution of centennial-scale records for marine isotope stage (MIS) 3: a database, *Quaternary Sci. Rev.*, 21, 1185–1212, 2002.
- World ocean atlas (WOA): available at: <http://www.nodc.noaa.gov/OC5/>, <http://www.geo.uni-bremen.de/geomod/staff/csn/woasample.html> (last access: 31 July 2012), 1998.
- Wagner, G., Beer, J., Laj, C., Kissel, C., Mazarik, J., Muscheler, R., and Synal, H.-A.: Chlorine-36 evidence for the mono lake event in the summit grip ice core, *Earth Planet. Sc. Lett.*, 181, 1–6, 2000.
- Wolff, E. W., Chappellaz, J., Blunier, T., Rasmussen, S. O., and Svensson, A.: Millennial-scale variability during the last glacial: The ice core record, *Quaternary Sci. Rev.*, 29, 2828–2838, 2010.
- Zaragosi, S., Eynaud, F., Pujol, C., Auffret, G. A., Turon, J. L., and Garlan, T.: Initiation of the European deglaciation as recorded in the north-western Bay of Biscay slope environments

(Meriadzek terrace and Trevelyan escarpment): A multi-proxy approach, *Earth Planet. Sc. Lett.*, 188, 493–507, 2001.

Zonneveld, K. A. F., Bockelmann, F., and Holzwarth, U.: Selective preservation of organic-walled dinoflagellate cysts as a tool to quantify past net primary production and bottom water oxygen concentrations, *Mar. Geol.*, 237, 109–126, 2007.

5

Ice coupled response during the last glacial

J. Zumaque et al.

Title Page

Abstract

Introduction

Conclusions

References

Tables

Figures



Back

Close

Full Screen / Esc

Printer-friendly Version

Interactive Discussion



Table 1. Radiocarbon dates for core MD99-2281 and age-control points derived from the correlation of the MS signal with the NGRIP GICC05 $\delta^{18}\text{O}$ record (Svensson et al., 2008; Wolff et al., 2010). See also Fig. 3.

Depth (cm) in core MD99-2281	AMS ¹⁴ C Age uncorrected (a BP)	Calendar Age corrected (CAL-a BP)	Dated Material/ Age control points/ References
40	10260 ± 100	11 165	<i>G. bulloides</i> , Boulay (2000)
170	12970 ± 110	14 729*	<i>G. bulloides</i> , Boulay (2000)
270	10800 ± 100	12 081	<i>G. bulloides</i> , Boulay (2000)
400	11 060 ± 110	12 400	<i>G. bulloides</i> , Boulay (2000)
510	15 290 ± 130	17 529	<i>N. pachyderma</i> s., Boulay (2000)
580	15 760 ± 170	18 092	<i>N. pachyderma</i> s., Boulay (2000)
650	16 040 ± 140	18 427	<i>N. pachyderma</i> s., Boulay (2000)
780	18 060 ± 160	20 830	<i>N. pachyderma</i> s., Boulay (2000)
1180	23 340 ± 240	26 993	<i>N. pachyderma</i> s., Boulay (2000)
1240		27 430	Correlation NGRIPGICC05, GI3 termination, Wolff et al. (2010)
1275		27 730	Correlation NGRIPGICC05, GI3 warming, Wolff et al. (2010)
1280	24 210 ± 140	27 992	<i>N. pachyderma</i> s., ARTEMIS (2010)
1300		28 550	Correlation NGRIPGICC05, GI4 termination, Wolff et al. (2010)
1355		28 850	Correlation NGRIPGICC05, GI4 warming, Wolff et al. (2010)
1430	27 430 ± 140	31 652	<i>N. pachyderma</i> s., ARTEMIS (2010)
1440	27 940 ± 140	32 226*	<i>N. pachyderma</i> s., ARTEMIS (2010)
1475		31 950	Correlation NGRIPGICC05, GI5 termination, Wolff et al. (2010)
1523		32 450	Correlation NGRIPGICC05, GI5 warming, Wolff et al. (2010)
1548		33 290	Correlation NGRIPGICC05, GI6 termination, Wolff et al. (2010)
1605		33 690	Correlation NGRIPGICC05, GI6 warming, Wolff et al. (2010)
1650		34 730	Correlation NGRIPGICC05, GI7 termination, Wolff et al. (2010)
1711		35 430	Correlation NGRIPGICC05, GI7 warming, Wolff et al. (2010)
1755		36 570	Correlation NGRIPGICC05, GI8 termination, Wolff et al. (2010)
1820	34 610 ± 290	39 586*	<i>N. pachyderma</i> s., ARTEMIS (2010)
1880		38 170	Correlation NGRIPGICC05, GI8 warming, Wolff et al. (2010)
1930		39 810	Correlation NGRIPGICC05, GI9 termination, Wolff et al. (2010)
1960		40 110	Correlation NGRIPGICC05, GI9 warming, Wolff et al. (2010)
2030		40 710	Correlation NGRIPGICC05, GI10 termination, Wolff et al. (2010)
2090		41 410	Correlation NGRIPGICC05, GI10 warming, Wolff et al. (2010)
2110		42 290	Correlation NGRIPGICC05, GI11 termination, Wolff et al. (2010)
2170		43 290	Correlation NGRIPGICC05, GI11 warming, Wolff et al. (2010)

* Age reversals removed.

Ice coupled response during the last glacial

J. Zumaque et al.

Title Page

Abstract

Introduction

Conclusions

References

Tables

Figures



Back

Close

Full Screen / Esc

Printer-friendly Version

Interactive Discussion



Table 2. Summary of the ecology of the main species recorded over the studied section of core MD99-2281.

Dinocyst species	Modern bioprovinces after Rochon et al. (1999)	Known ecological preferences (after Rochon et al., 1999; Marret and Zonneveld, 2003; de Vernal and Marret, 2007)	Presence in core MD99-2281
<i>B. tepikiense</i>	– temperate to subarctic (high abundance spots at the St Laurence and Baltic sea outlets)	– tolerates a wide range of SST and salinities, but most represented in areas when summer SST exceed 10 °C. – strong affinity for stratified surface waters characterized by a large seasonality (Rochon et al., 1999)	– dominates the assemblages along most of the MIS3 section with percentages sometimes reaching 95 % This atypical high values are not observed at present in the north-Atlantic ocean surface sediments (max. of 30 %)
<i>O. centrocarpum</i>	– observed from mid to high latitudes – associated with the North Atlantic Drift (NAD) pathway	– tolerates a wide range of temperatures and salinities	– second most abundant species encountered, especially at the base of the section
<i>Brigantedinium</i> spp.	– ubiquitous, often dominant in upwelling zones – also associated with sub-arctic and arctic water masses	– tolerates a wide range of temperatures, salinities and sea-ice cover duration – heterotrophic taxa, has been related to its main food source, that is, diatoms	– well represented at the top of the section – relatively difficult to identify at the species level due to the crumbled aspect of the cyst
<i>I. minutum</i>	– sub-polar to polar	– associated with long sea-ice cover duration (from 8 to 12 months)	– poorly represented in our sequence, except in the upper part of the section
<i>P. dalei</i>	– sub-polar to polar environments in North Atlantic basins, north of the NAD	– tolerates a wide range of SSSs, SSTs, and sea-ice cover duration – requires a 4 °C SST minimum during summer – abundant in regions with a large seasonal gradient of SSTs	– low abundances in the sequence; presence most noticeable at the base of the section

Ice coupled response during the last glacial

J. Zumaque et al.

Title Page

Abstract

Introduction

Conclusions

References

Tables

Figures



Back

Close

Full Screen / Esc

Printer-friendly Version

Interactive Discussion



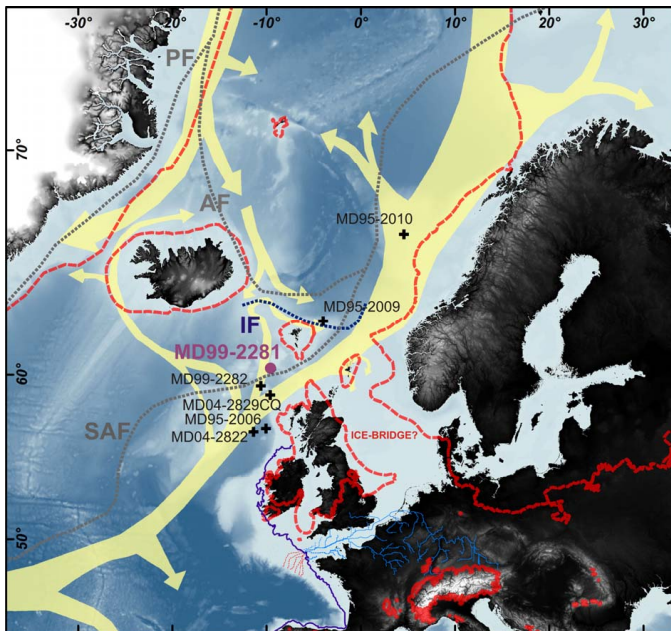


Fig. 1. Location of the studied core (MD99-2281: this work) and other cores discussed in the paper (MD95-2009; MD95-2010; Eynaud et al., 2002; MD04-2822; MD95-2006; Knutz et al., 2001; Hibbert et al., 2010; MD04-2829CQ; Hall et al., 2011). The yellow arrows picture the pathway of the main modern surface currents after Fogelqvist et al. (2003). Dotted grey lines locate major modern hydrographic fronts: PF = Polar Front, AF = Arctic Front; SAF = Sub-Arctic Front, after Dickson et al. (1988). The IFF = Iceland Faeroe Front is indicated by the dark blue dotted line after Rasmussen et al. (2002b). The palaeogeography of the adjacent European continent during the LGM with the hydrographic system/paleovalleys of the Manche River (after Lericolais et al., 2003) and the paleo-coastline (bold blue line) at 21 ka BP (after Bourillet et al. 2003) are also depicted. The full glacial extension of the north hemispheric ice sheets (after Grosswald and Hughes, 2002, and Ehlers and Gibbard, 2004) is schematized by the red dotted-line.

Ice coupled response during the last glacial

J. Zumaque et al.

Title Page

Abstract

Introduction

Conclusions

References

Tables

Figures



Back

Close

Full Screen / Esc

Printer-friendly Version

Interactive Discussion



Ice coupled
response during the
last glacial

J. Zumaque et al.

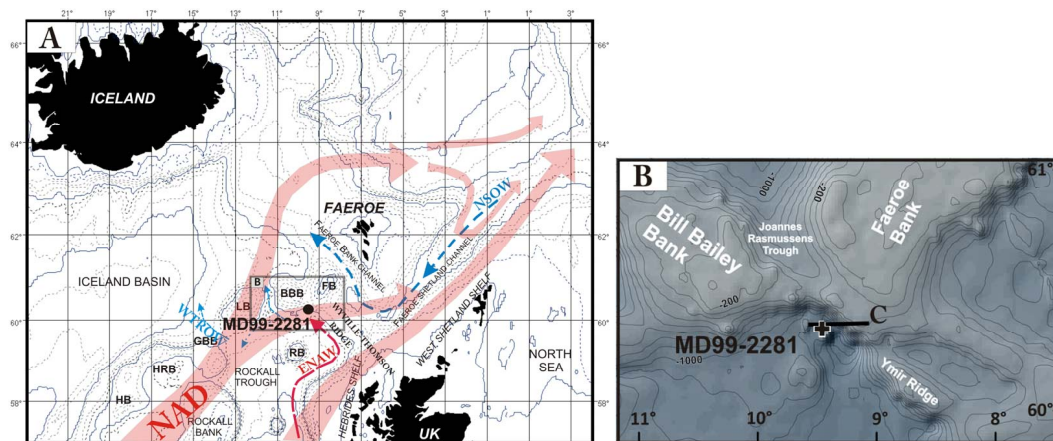


Fig. 2. Detailed physiography of the studied area. **(A)** Isobath: the first depth contour represents the 200 m isobar on the shelf. The next depth contour is the 1000 m isobar. At water depths greater than 1000 m, the distance between the isobars is 1000 m. Bill Bailey's Bank (BBB), Faeroe Bank (FB), George Bligh Bank (GBB), Hatton Bank (HB), Hatton-Rockall Basin (HRB), Lousy Bank (LB), Rosemary Bank (RB) (Howe et al., 2006). *Surface and sub-surface Currents:* North Atlantic Drift (NAD), East North Atlantic Water (ENAW). *Bottom currents:* Norwegian Sea Overflow Water (NSOW), North East Atlantic Deep Water, Wyville-Thompson Ridge Overflow Water (WTROW) (after Kuijpers et al., 1998; Holliday et al., 2000; New and Smythe-Wright, 2001; Kuijpers et al., 2002; Howe et al., 2006). **(B)** Bathymetric map (contour interval 100 m) zooming on the core site with location of the C seismic section documented by Boldreel et al. (1998) which identified pelagic deposits unaffected by currents in the coring area.

Title Page

Abstract

Introduction

Conclusions

References

Tables

Figures

◀

▶

◀

▶

Back

Close

Full Screen / Esc

Printer-friendly Version

Interactive Discussion



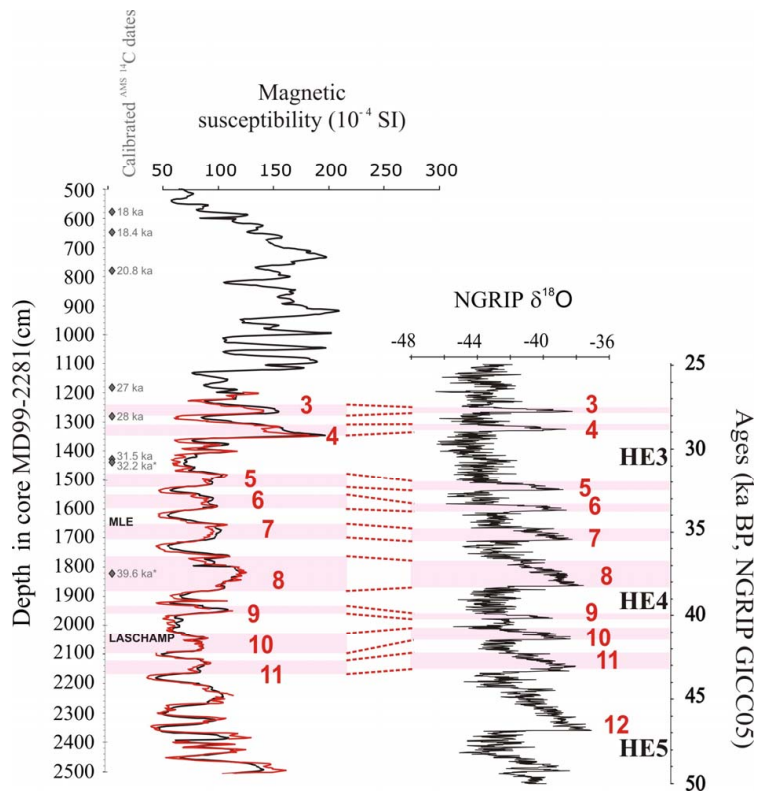


Fig. 3. Magnetic Susceptibility (MS) record from core MD99-2281 (dark line = onboard data versus red line = low field magnetic susceptibility) and its correlation to the NGRIP GICC05 $\delta^{18}\text{O}$ record (Svensson et al., 2008) to define supplementary age control-points over the MIS3 period. See also Table 1. Light pink bars underline GIs, labels and limits after Wolff et al. (2010). The horizons having recorded the geomagnetic excursions (MLE for Mono Lake excursion and Laschamp) are also indicated.

Ice coupled response during the last glacial

J. Zumaque et al.

Title Page

Abstract

Introduction

Conclusions

References

Tables

Figures

◀

▶

◀

▶

Back

Close

Full Screen / Esc

Printer-friendly Version

Interactive Discussion



Ice coupled
response during the
last glacial

J. Zumaque et al.

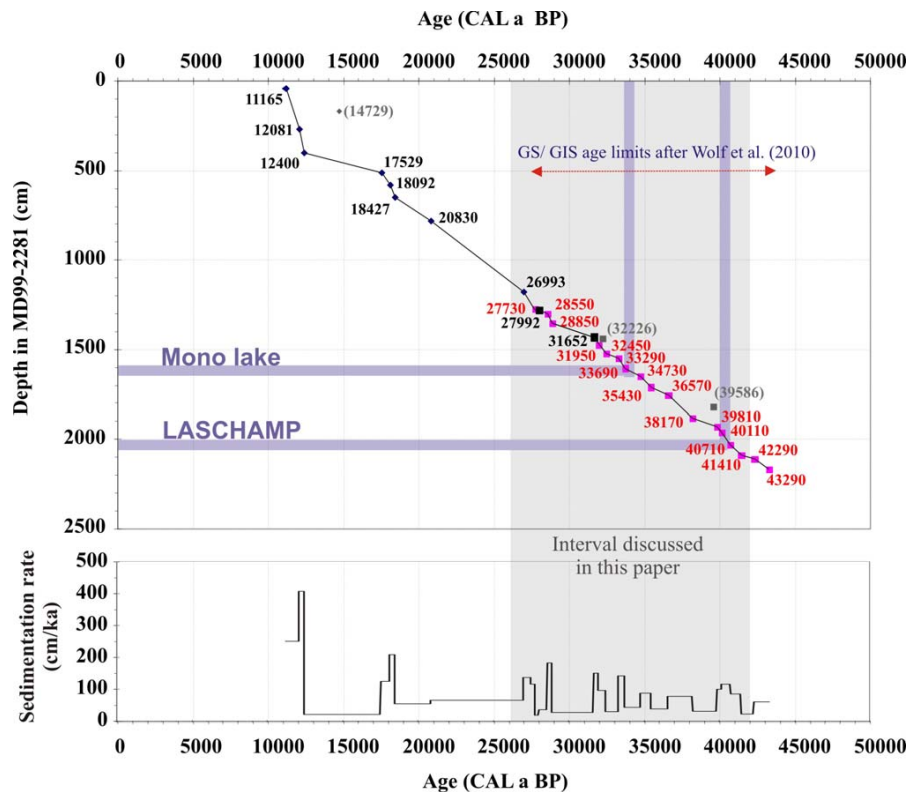


Fig. 4. Age model and sedimentation rates for the last 50 ka BP in core MD99-2281 (see also Table 1). Dates in red are those deduced from the correlation (see also Fig. 3) of the magnetic record and the NGRIP GICC05 $\delta^{18}\text{O}$ after Wolf et al. (2010).

Title Page

Abstract

Introduction

Conclusions

References

Tables

Figures

◀

▶

◀

▶

Back

Close

Full Screen / Esc

Printer-friendly Version

Interactive Discussion



Ice coupled
response during the
last glacial

J. Zumaque et al.

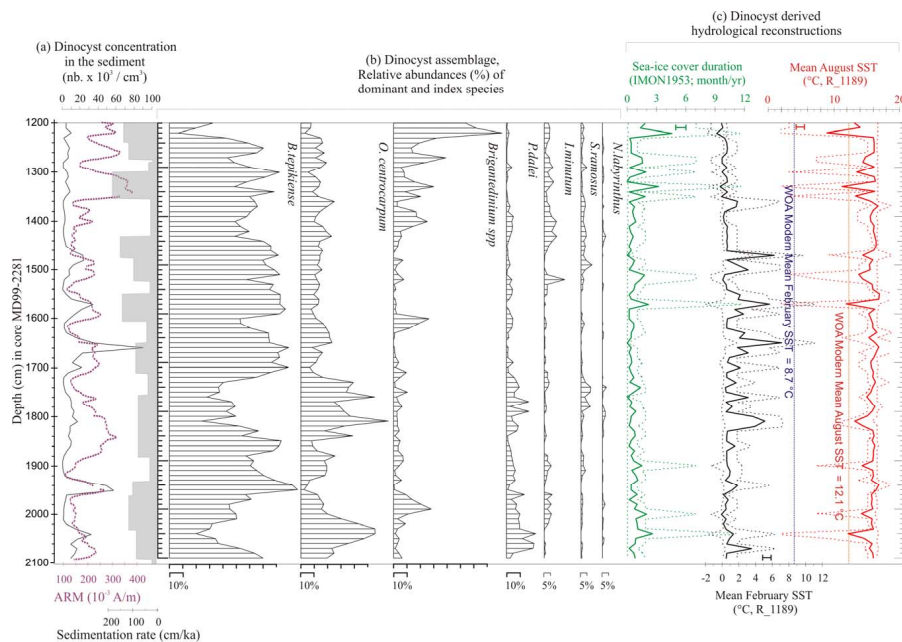


Fig. 5. Results from dinocyst analyses (see also Table 2) over the section 1200–2100 cm in core MD99-2881, with **(a)** dinocyst total concentrations in the sediment (No. of cyst cm^{-3} of dry sed.); **(b)** relative abundances of some selected species; **(c)** Dinocyst derived reconstructions (modern analogue technique) of sea-surface conditions (Sea-ice cover duration ± 1.1 months per year; February SST $\pm 1.1^\circ\text{C}$; August SST $\pm 1.6^\circ\text{C}$). The dotted lines surrounding each reconstructed parameter correspond to minima and maxima values found in the set of the 5 selected analogues. Modern values of SSTs after WOA (1998). The ARM (for anhysteretic remanent magnetization) and the sedimentation rate calculated from our age model (tuned on NGRIP-GICC05) are also shown on the left.

Title Page

Abstract

Introduction

Conclusions

References

Tables

Figures

◀

▶

◀

▶

Back

Close

Full Screen / Esc

Printer-friendly Version

Interactive Discussion



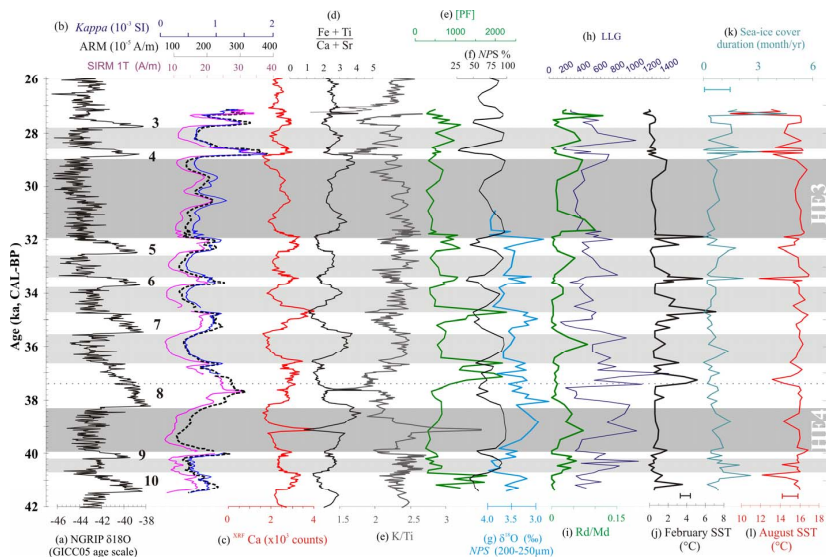


Fig. 6. Multiproxy results obtained on the MIS3 section of core MD99-2281 compared to the (a) $\delta^{18}\text{O}$ NGRIP GICC05 record (Svensson et al., 2008), with: (b) magnetic properties (volume susceptibility – Kappa – ARM; Isothermal Remanent – IRM – magnetizations); XRF data with (c) Ca raw counts, (d) ratio (Fe + Ti)/(Ca + Sr) and (e) ratio K/Ti; (f) planktonic foraminifera absolute concentration in the sediment ([PF] = No. of shells > 150 μm per g of dry sed.); (g) relative abundances (%) of the polar taxon *N. pachyderma* sin. (NPS); (h) $\delta^{18}\text{O}$ measurements on monospecific samples of NPS shells (200–250 μm); (i) large lithic grain concentration in the sediment (LLG = No. of grain > 150 μm per g of dry sed.); (j) reworked dinocyst versus Modern dinocyst concentrations, i.e. Rd/Md ratio; (k) to (m): dinocyst derived reconstructions of sea-surface conditions with February SST ± 1.1 $^{\circ}\text{C}$; (l) August SST ± 1.6 $^{\circ}\text{C}$; (m) Sea-ice cover duration ± 1.1 months per year.

Greenland stadials (light grey bands), including Heinrich events (dark grey bands) are defined in agreement with the stratigraphic synthesis of Wolff et al. (2010).

Ice coupled response during the last glacial

J. Zumaque et al.

Title Page

Abstract

Introduction

Conclusions

References

Tables

Figures

◀

▶

◀

▶

Back

Close

Full Screen / Esc

Printer-friendly Version

Interactive Discussion

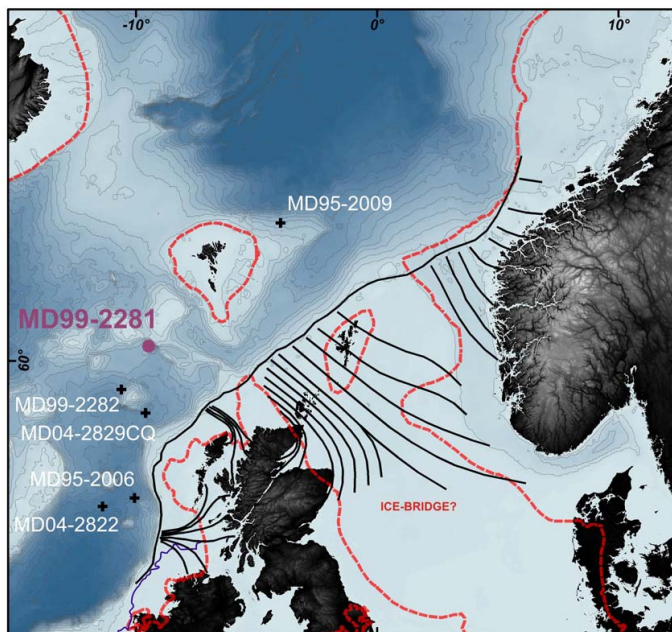


Fig. 7. BIIS-FIS ice sheets and their associated paleo-ice-stream main directions (black solid line, after Bradwell et al., 2008). The full glacial extension of the north hemispheric ice sheets is schematized by the red dotted-line after Grosswald and Hughes (2002) and Ehlers and Gibbard (2004). Palaeo-coastline at 21 ka BP in blue after Bourillet et al. (2003). The studied core (MD99-2281: this work) and other cores discussed in the paper (MD95-2009; Eynaud et al., 2002; MD04-2822; MD95-2006; Knutz et al., 2001; Hibbert et al., 2010; MD04-2829CQ; Hall et al., 2011) are also located.

Ice coupled response during the last glacial

J. Zumaque et al.

Title Page

Abstract

Introduction

Conclusions

References

Tables

Figures



Back

Close

Full Screen / Esc

Printer-friendly Version

Interactive Discussion

