

# Little Ice Age advance and retreat of Glaciar Jorge Montt, Chilean Patagonia, recorded in maps, air photographs and dendrochronology

A. Rivera <sup>1,2</sup>, M. Koppes <sup>3</sup>, C. Bravo<sup>1</sup>, and J.C. Aravena <sup>4</sup>

<sup>1</sup> Centro de Estudios Científicos (CECS), Valdivia, Chile.

<sup>2</sup> Departamento de Geografía, Universidad de Chile, Santiago, Chile.

<sup>3</sup> Department of Geography, University of British Columbia, Vancouver, Canada

<sup>4</sup> Centro de Estudios Cuaternarios de Fuego Patagonia y Antártica (CEQUA), Punta Arenas, Chile

**Abstract.** Glaciar Jorge Montt (48°20'S/73°30'W), one of the main tidewater glaciers of the Southern Patagonian Icefield (SPI), has experienced the fastest frontal retreat observed in Patagonia during the past century, with a recession of 19.5 km between 1898 and 2011. This record retreat uncovered trees laying subglacially until 2003. Samples of these trees were dated using radiocarbon methods, yielding burial ages between 460 and 250 cal. yrs. BP. The presence of old growth forest during those dates indicates that Glaciar Jorge Montt was upvalley of its present position before the commonly recognized LIA period in Patagonia. The post-LIA retreat is most likely triggered by climatically induced changes during the 20<sup>th</sup> century, however, Glaciar Jorge Montt has responded more dramatically than its neighbours. The retreat of Jorge Montt opened a new fjord 19.5 km long, and up to 391 m deep, with a varied bathymetry well correlated with glacier retreat rates, suggesting that dynamic responses of the glacier are at least partially connected to near buoyancy conditions at the ice front, resulting in high calving fluxes, accelerating thinning rates and rapid ice velocities.

*Correspondence to:* Andrés Rivera  
(arivera@cecs.cl)

## 1 Introduction

The Patagonian Icefields (Figure 1) are the largest temperate ice masses in the southern Hemisphere, comprised of two main ice bodies, the Northern and the Southern Icefields (NPI and SPI, respectively), which include 118 inventoried glaciers and a total ice-covered area of approximately 17,000 km<sup>2</sup> (Rivera et al., 2007; Aniya et al., 1996). Most of these glaciers have been retreating since the end of the Little Ice Age (LIA), defined as the 16<sup>th</sup>-19<sup>th</sup> century period of the European climate with enhanced glacial conditions (Mann, 2002), and characterized in Patagonia by two main advances, around 1650 and 1750 AD (Masiokas et al., 2010; Glasser et al., 2010). Despite a general retreating trend since the end of the LIA (Rignot et al., 2003; López et al., 2010), some glaciers, especially Glaciares Moreno, Pío XI and Trinidad in the SPI, have demonstrated anomalous positive behaviour, advancing during the 20<sup>th</sup> century well after the end of the LIA (Rivera et al., 1999; Masiokas et al., 2009). Others have suffered rapid retreats into deep lakes and fjords, such as Glaciar O'Higgins (Casassa et al., 1997) and Glaciar Upsala (Skvarca et al., 2002). These anomalously rapid retreats have been related to 1) calving characteristics of the ice fronts, 2) ice flow acceleration in the lower reaches of the glaciers, and 3) surface elevation changes as the glaciers thin and shrink. All three factors are ultimately triggered by climate variability and regional warming. However, the specific behaviour of each ice body will depend on other factors, including the bathymetry of the lakes or fjords into which the glaciers are calving, which may influence the volume of ice lost to calving and which may be a cause, or a consequence of, any acceleration in ice flow (Benn et al., 2007).

The western (Chilean) side of Patagonia, where many of the glaciers that calve into seawater are located, is an archipelago with thousands of islands and channels. The region has been visited since the 16<sup>th</sup> century as numerous explorers crossed the Strait of Magellan (Martinic, 1999). One of the first visitors to leave an account of a perilous trip was Juan Ladrillero, who navigated western Patagonia in 1597/98. During his explorations, navigation was made challenging by the many icebergs coming from Glaciar Pío XI, at the end of Fiordo Eyre (Bertrand, 1880). This and other narratives of icebergs in historical accounts have been used to define a cold period during the second half of the 16<sup>th</sup> century (Prieto and Herrera, 1998), coincident with the beginning of the LIA, which reached its maximum extent around AD 1650 (Villalba, 1994; Villalba et al., 2003).

The first effort to map glaciers in Patagonia was conducted by King (1839), using data collected during the British Hydrographic expeditions of 1826-1830 on board HMS Beagle, Adventure and Adelaide (which included Charles Darwin, the famous naturalist, among other members of the crew). Between January and April 1830, the HMS Adelaide, under Lieutenant Skyring, mapped Fiordo Eyre, including the ice front position of Glaciar Pío XI. Comparing his map to the present (2011) position of the glacier front, Pío XI has advanced almost 12 km.

Despite these dramatic accounts of Pío XI, very little is known about the long term historical variations of other glaciers in the SPI, such as Glaciar Jorge Montt (48.2°S / 73.5°W, 447 km<sup>2</sup> in 2009). Jorge Montt is one of the main tidewater calving glaciers of the SPI, flowing north from one of the central plateaus of the SPI (shared with Glaciares Occidental, Témpano and Bernardo, among others) (Figure 1). The glacier calves into

an unnamed fjord that opened as a consequence of glacier retreat since 1898, when the first map to include the glacier was published by Steffen (1910). At this time, the ice front extended to within 3 km of Fiordo Calen, also known as Canal Baker (Figure 2). The lower tongue has been thinning dramatically in recent decades, with an areal thinning rate (total volume loss divided by the area per year) of 3.3 m/yr between 1975 and 2000, the fastest thinning rates observed in Patagonia (Rignot et al., 2003).

In this paper, we present details of the 20<sup>th</sup> century changes from Glaciar Jorge Montt. The main purpose of this paper is to understand calving glacier behaviour during and since the LIA, considering local topographic conditions and their possible influence on glacier dynamic responses. We present all available historical records, aerial photographs and satellite imagery of the glacier, which we use to analyse in detail changes in ice front position over the last 200-300 years, and compare these changes to a recent survey of the bathymetry of the opening fjord as well as to dendrochronologic dates collected near the 2010 terminus. We then compare these historical variations to changes documented at other glaciers within the northern SPI, in order to highlight the key variables that drive differences in glacier response to regional climate change.

## **2 Data and Methods**

### **2.1 Historical accounts**

A first historical account of Glaciar Jorge Montt was recorded at the end of the 16<sup>th</sup> century. This record includes no map, and the description is very difficult to map and interpret. Several historical accounts from the 19<sup>th</sup> century have been found, due to the Chilean Boundary Commission, who travelled through southern Chile mapping the region while looking for the continental watershed divide, among other features. These accounts are not very precise, but they contain sufficient detail to fix glacier positions and characterize some of the lower ice tongues.

### **2.2 Aerial photographs**

The oldest aerial photos collected in Patagonia were acquired in 1944/45 by the United States Air Force, which surveyed the whole of Southern Chile, collecting the first aerial photographs of the region. The TRIMETROGON flight was composed of one vertical and two oblique lines of photographs. The TRIMETROGON aerial survey was used to prepare a 1:250,000 preliminary cartography of Patagonia, including the position of almost every glacier in the Patagonian icefields, but did not include the surface topography of the ice, which was only a preliminary estimate. Subsequent aerial photo surveys only collected vertical images, including the so-called McHurd photo series taken in 1975, at approximately 1:50,000 scale.

The aerial photos collected in Patagonia are available solely as paper copies, and many of the series have no overlapping areas for photogrammetric analysis. The photos were analysed with stereoscopes, and then scanned and adjusted to modern cartography using GIS software, enabling us to geo-reference the scanned photos to the most recent cartography. The errors inherent in using this procedure to adjust the photos to satellite images or cartography is considerable when applied to the whole photo (i.e. distortion

increases away from the principal point), however, the accuracy improves significantly when focusing on particular areas within the centre of the images.

### 2.3 Satellite images

The oldest available satellite images of the region were collected by the Corona spy satellite in 1963, and by the Keyhole sensor in 1979. In August 1963, the first Corona satellite image of the Patagonian icefields was collected in what is now known as “the declassified mission” (Table 1). Given the midwinter acquisition date of the imagery, most of the icefields are covered in snow, however, the frontal positions of many of the SPI glaciers are clearly visible, allowing the termini to be mapped accurately. These images are also only available as paper copies, and were analysed using the same procedure as for the aerial photographs, described above.

In 1972, with the launch of the Landsat MSS satellite series, the frequency of images from the SPI increased. In 1976, the first Landsat MSS successfully collected images from the region, and these were made digitally available (Table 1). In 1979, two images are available, one from March and second from August, which show no significant change in glacier position between 1976 and 1979.

The digital satellite images were geo-referenced to regular cartography, and orthorectified using the Space Shuttle Radar Topography mission (SRTM) data set. A manual adjustment was applied to ensure a more precise overlap between the images, using tie points selected from the most clearly visible features around the study area. Considering the resolution of the images and the geo-referencing process, a systematic horizontal error in the order of one or two pixels is assumed, according to the method described in Williams et al., (1997) and Rivera et al., (2007).

The full dataset of satellite images was projected into a Universal Transversal Mercator format (UTM-zones 18S and 19S) under the WGS84 datum. Database management and analysis were carried out using GIS tools from ENVI 4.5 and ArcMap.

Several false-colour composite images derived from the visible and/or near infrared bands were obtained by layer stacking procedures (Paul et al., 2002), including Landsat 5/4/3, Landsat 5/4/1 and ASTER 3/2/1; this produced the best discrimination between the glaciers and non-glaciated surfaces (vegetation, water bodies and seasonal snow patches). Glacier outlines were manually digitised from each image. Ice divides were obtained by overlapping SRTM layers on satellite composite images, and then deriving contour lines from the SRTM DEM, allowing us to define the main glacier flow lines.

A full coverage mosaic of the SPI was acquired in October 2000 with a Landsat ETM+ image (Table 1). This mosaic allowed mapping the basin outlines of the glaciers analysed. These basin outlines are similar to the polygons drawn by Aniya et al., (1996), with minor modifications due to the addition of the SRTM data.

Unfortunately, the only satellite image available for the 1990s was obtained in 1997. Cloud cover in this image is considerable, however, the ice front is distinguishable between the mist and the brash ice covering most of the newly vacated fjord, generated after significant glacier retreat in the prior decade.



Two ASTER scenes were acquired in February 16 and 25, 2010 (Table 1), at the end of the austral summer, and used to estimate the most recent Equilibrium Line Altitudes (ELA) of the major glaciers of the SPI.

## 2.4 Topographic data

The first detailed topography of the area was based upon the McHurd aerial photographs of 1975, and was prepared by the Military Geographical Institute of Chile (IGM) at 1:50,000 scale. The map includes the ice front position of Glaciar Jorge Montt and the surface topography of the glacier up to approx. 1000 m asl, where the stereoscopic capabilities of the aerial photography was lost due to white surfaces covered by fresh snow. The spatial resolution of the DEM derived from this map is 50 m and the vertical accuracy is 19 m (Rivera et al., 2007).

In 2000, the Patagonian icefields region was included in the SRTM DEM dataset. The available resolution of the SRTM data is 90 m for Patagonia, and the glaciers are almost completely included in the DEM except for in the upper reaches of the plateaus, within the accumulation areas, where data were scarce. The vertical accuracy of this dataset is better than 16 m (Bamber and Rivera, 2007). Hypsometric curves of the main glaciers were derived from SRTM data using the glacier basins for the same year (2000).

In December 2002 and 2008, airborne campaigns were conducted from a Chilean Navy Orion P3 airplane using the NASA Airborne Topographic Mapper (ATM) laser to survey the surface topography of Glaciar Jorge Montt. The campaign covered two longitudinal profiles from sea level up to the ice divide, with decimeter accuracy (Krabill et al., 1995).

The ASTER scene acquired in February 16, 2010 was selected for an ASTER DMO (on demand) DEM, with spatial resolution of 30 m and vertical accuracy of 21 m.

## 2.5 Bathymetry

In February 2010, we conducted a field campaign to the glacier by boat. Access to the ice front was challenging due to the vast amount of brash ice in the inner fjord, confirming high calving rates of the glacier. In spite of these difficulties, the terminus of the glacier was reached and mapped from a zodiac. We also were able to explore the western margin of the glacier, where two stereographic time-lapse cameras were installed in order to measure surface ice velocities (Rivera et al., 2011a). These cameras collected continuous imagery until January 22, 2011.

The depth and subsurface of the new fjord left by the retreating glacier was surveyed with the following instruments/methods: 1) A GARMIN GPS-sonar receiver model GPSMAP 188c, able to locate the position of each bathymetric measurement (3 m accuracy), as well as to penetrate up to 420 m of salt water. This receiver was mounted on a Zodiac gum boat navigating close to the glacier front, trying to avoid the huge amount of brash ice at the inner fjord. 2) A FURUNO sonar system installed on the yacht provided by a private company Waters of Patagonia, which provided logistical support during the February 2010 campaign to the area. 3) A Datasonics Bubble Pulser sub-bottom profiler, using a 4 m long hydrophone and GeoAcoustic amplifier. This system allowed us to survey deeper waters, as well as map the submarine sediments in

the fjord. It was able to penetrate up to 250 m of soft sediment deposits. The analysis of these sediments is part of a subsequent study.

More than 26,000 bathymetric datapoints were collected in the fjord in February 2010. The data were collected along longitudinal and traverse tracks crossing the fjord spaced approximately 500 m apart. The data coverage was very dense in some parts of the fjord, whereas other regions were sparsely surveyed due to the presence of brash ice and icebergs precluding navigation. The area near the ice front in February 2010 was surveyed along a transverse profile located only 100 m from the terminal ice cliff. Using all available data points, a linear interpolation method was applied to infer the bathymetry between tracklines, resulting in a bathymetric map of the fjord with 20 m contour intervals.

## 2.6 Dendrochronology

In February 2010, whilst surveying the glacier margin, several pieces of semi-buried *Nothofagus sp.* trees were discovered in a small, lateral valley only 750 m from the 2010 glacier margin in a location that was covered by ice until at least 2000. From the outermost perimeter of two of these trees, samples were collected for radiocarbon analysis. Samples were sent to the Beta Analytic Radiocarbon Dating Laboratory for  $^{14}\text{C}$  dating. The INTCal04 database was used for radiocarbon age calibration, following the approach of Talma and Vogel (1993).

In January 2011, thirteen cross sections were obtained from the same *Nothofagus sp.* trees discovered close to the glacier margin in February 2010. The sections were analyzed following standard dendrochronological procedures and 26 radii were measured and cross-dated to construct a floating (i.e. without calendar ages) tree-ring chronology from the locality.

## 3. Results

### 3.1 Historical extent of Glacier Jorge Montt

The first detailed account of this glacier was written by Dr. Hans Steffen, an expert German geographer, hired by the Chilean Boundary Commission to study the geography of Patagonia in preparation for the Chilean position at the arbitration tribunal dealing with the boundary controversy between Chile and Argentina (Pozo, 2005). He visited the area in December 1898 onboard the steamer Condor, mapping the area (Figure 2). During this trip, he spotted a great glacier (Ventisquero in Spanish), covered in long lateral and medial moraines, descending from the icefield located to the south and calving into Fiordo Baker (Steffen, 1898). This glacier was later named Jorge Montt in honour of a president of Chile (1891-1896). A decade later, Risopatrón (1910), also working for the Chilean Boundary Commission, published a more comprehensive map of the whole region, confirming that the terminus of Glaciar Jorge Montt was in a similar position to that of the Steffen survey of 1898.

In 1944/45, the United States Air Force surveyed Southern Chile, collecting the first aerial photographs of the region. These images were used to map the terminus of Glaciar Jorge Montt and ascertain that it had retreated approximately 6.7 km since 1898, yielding a retreat rate of 146 m/yr (Table 2). The photos also confirmed the presence of

the morainic bands described by Steffen (1898), but by this time only the lateral moraine on the eastern side of the tongue reached directly into the ocean. The lateral moraine on the western side had a more complex shape consisting of two lateral flows, not reach the ocean but terminating in a side valley where both flows joined together and were partially calving into a small freshwater lagoon.

In the 1963 Corona image, Glacier Jorge Montt is visible at the northern side of the SPI reflecting a moderate frontal retreat of 195 m since 1945 (Table 2). The lower tongue of the glacier is partially debris covered, especially the western margin which ends in a lateral valley, as seen in the 1945 photo. In 1963, both lateral moraines of Jorge Montt are reaching the ocean, and little ice is visible in the western side valley described in 1945 as partially occupied by ice with a complex surface moraine shape. In the region where the left lateral arm was overflowing into the lateral valley in 1945, the 1975 image showed that a small tongue has separated from the main ice flow direction, and protrudes 2 km into this lateral valley, ending in a steep slope without any visible calving activity. The western valley, now ice-free, shows a river coming from the upper slopes, a marshy area and a lake. The whole valley is covered by grass and is free of forest cover, indicating that the ice covering this area had melted away in situ (dead ice) some time since 1963. Between 1976 and 1963, the ice front retreated 530 m (Table 2).

The glacier in 1976 is calving into the fjord, with both lateral moraines reaching sea water. No dead ice is visible in the western lateral valley. Between 1976 and 1979 the central part of the glacier in the middle of the fjord retreated 321 m, whilst the western margin remained relatively stable (Figure 3).

During the 1980s the glacier front was quite stable, with minor fluctuations and minimum retreat. However, around 1990 the glacier underwent a sudden, dramatic and almost catastrophic retreat, with the glacier retreating 8 km in a decade. Interestingly, in the 1997 image, the western side of the calving front extends 3 km north from the main calving front, in a narrow lateral band along the fjord edge. This partially debris-covered ice is a remnant portion of the retreating glacier, hanging onto the margin of the fjord as grounded ice, with little calving activity. This type of 'dead ice', is melting in situ, almost disconnected from the main trunk of the glacier and therefore not fed by new ice coming from the upper reaches of the icefield and has a small amount of calving along the margin in contact with the fjord water.

After undergoing significant retreat in the 1990s, the glacier front stabilized and retreat slowed during the 2000s. The "dead ice" observed in the 1997 image is gone and the lateral moraines are calving directly into the fjord. However, by 2000, a new area of debris covered "dead ice" was observed extending 1.5 km north of the 2000 calving front along the western margin of the glacier, with a similar narrow shape compared to that observed in 1997. This region of stagnant ice, almost detached from the main glacier, had disappeared by 2003, when the entire glacier front calved directly into the fjord without lateral extensions along the margins. The disappearance of the stagnant ice exposed several trees that had been buried in-situ and were sampled in 2010 and 2011 (see location of samples in Figure 3).

The time-lapse imagery collected in 2010-2011 shows a further retreat of the terminus of ~1 km, with a total area lost yielded  $1.48 \text{ km}^2$  during 2010. The images also captured a massive calving event between February 16 and 25, 2010 with a total area lost of 0.31

km<sup>2</sup>. Analysing the photos closely, many calving events were observed to produce large icebergs, some with semi tabular shapes. The fjord remained predominantly covered by icebergs and brash ice throughout 2010. However, the front of the glacier also showed evidence of upwelling, as seen in semi-circular, ice-free areas of open sea water next to the ice front. Along both lateral margins of the main tongue, narrow bands of debris-covered ice were hanging from the mountain flanks. These “dead ice” areas were almost disconnected from the main glacier flow and melting *in situ*.

In synthesis, the glacier retreated between 1898 and 2011 (January) a total of 19.5 km.

### 3.2 Bathymetric survey

The bathymetry at the 1898 ice front position (Figures 4 and 5) indicates this stable ice front position overlies a submarine moraine arc crossing the fjord with minimum water depths of 16 m and a narrow channel of ~45 m depth along the western edge of the outer fjord.

The submerged section of the outer fjord, between the 1898 and 1945 terminal positions (Figure 4) is typically “U” shaped with a flat bottom of maximum depth 115 m. The 1945 terminus coincides with another subaquatic ridge of less than 80 m water depth.

The bathymetry between the 1945 and 1990 terminal positions shows a gently sloping valley floor with increasing water depth. Between the 1990 and 1997 ice front positions, the fjord bottom drops steeply to reach a maximum depth of 370 m (Figure 4). The position of this deep part of the fjord coincides with the timing of the most rapid retreat during the 1990s. It also coincides with the period when the glacier underwent the strongest thinning.

Further upfjord of the 1997 terminus position, water depths decrease to a mean of -210 m close to the 2000-2003 ice front, before dropping again to a maximum depth of -391 m at the 2010 ice front (Figure 6).

### 3.3 Thinning rates

The surface topography of the glacier during the latter half of the 20<sup>th</sup> century changed dramatically. Rignot et al., (2003) compared the 1975 topography to the SRTM topography (2000), and showed a maximum thinning rate of 18 m/yr between 1975 and 2000.

Between 2000 and 2002 (Figure 6), comparing the LIDAR profiles measured during the airborne P3 campaign, the glacier thinned at a mean rate of 31 m/yr, the maximum rate of thinning recorded for this glacier. LIDAR profiles in 2002 and 2008 showed a mean thinning rate of 2.8 m/yr, which increased to 22 m/yr between 2008 and 2010.

### 3.4 Ice velocities

The first measurements of ice velocity at Jorge Montt were collected by Enomoto and Abe (1983), who measured surface velocities of 240 m/yr at a grounded lateral tongue of the glacier. Using speckle tracking from RADARSAT-1 images collected in 2004,

Eric Rignot (personal communication) obtained values of up to 3460 m/yr, at a location 3 km upstream the glacier front. More recently, based upon feature tracking of geo-referenced photos from the fixed cameras installed in 2010, Rivera et al., (2011) obtained a mean value of 4885 m/yr for a complete transverse cross-section at the glacier front, indicating significant acceleration of ice flow in the past three decades (Rivera et al., 2011a).

### 3.5 Tree samples

The first sample (Figure 7), collected from the outermost perimeter of a tree located along the margin of a proglacial stream 750 m from the 2010 glacier margin, was dated to  $460 \pm 40$   $^{14}\text{C}$  yr BP, with a calibrated age of 1440 cal AD. The second sample, from a tree collected approximately 50 m from sample 1, was dated to  $250 \pm 40$   $^{14}\text{C}$  yr BP, with a calibrated age of 1650 cal AD. However,  $^{14}\text{C}$  dates in the time range less than 500 years, present non-linear relationships between  $^{14}\text{C}$  years and calendar years, adding uncertainty to the age estimation.

The almost 200 year difference in age between the samples must reflect timing of death of the trees and not differences in burial dates or separate glacial advances, as both samples were collected from the outer part of the trees, located at the same subglacial deposit, in close proximity, where both were partly buried in the same thin layer of till. The area was scoured by the glacier and most of the surface was bare rock with lag boulders, hence there is no evidence of multiple glacier advances.

Sixteen out of the 26 measured radii, from the thirteen collected trees, were successfully cross-dated with a mean correlation of 0.457. The resulting floating chronology covers 276 years, with high interannual variability (Figure 8).

The tree-ring results suggests the area was covered by an old-growth forest dominated by *Nothofagus betuloides* (“coigue de Magallanes” - Magellanic southern beech) with individuals of average age close to 150 years, co-existing for almost 300 years (total chronology length). The radiocarbon ages of between 250 and 450 years BP from two of the sampled trees suggests that the tree ring samples were taken from a mature forest that was destroyed by the advance of Glaciar Jorge Montt during the LIA period. If one accepts the 250 BP  $^{14}\text{C}$  date then the glacier advanced after that date overriding the old growth forest located close to the 2010 glacier front position.

## 4 Discussion

The change in the glacier retreat rate is well correlated to the bathymetry (Figure 9), with retreat rates increasing with increasing water depths, as postulated by calving theory (e.g., Meier and Post, 1987; Benn et al., 2007). The relationship, however, is not linear, but suggests a polynomial fit ( $r^2 = 0.67$ ). The fastest retreat occurred in the 1990s and again in the past two years, when the water depth exceeded 350 m. This also coincides with the timing of the most rapid ice acceleration and thinning, and suggests that calving is increasing with both water depth as well as with higher ice velocities and more rapid thinning, leading to losses at the ice front in excess of ice flux to the terminus.

In order to better understand the relationship between the bathymetry and changes in glacier extent, we also investigated the calving flux. As a first approximation, calving flux can be calculated from the fjord cross-sectional bathymetry, the retreat rate and ice velocities, where known (Skvarca et al., 2002). Unfortunately, measured ice velocities are very scarce in Patagonia, and only three measurements are available at Jorge Montt, albeit showing steady acceleration in recent decades.

Using the mean glacier frontal calving velocities based on the depth averaged ice velocity plus the frontal change for each period (7.3 m/d in 2004 and 13.3 m/d in 2010), the fjord cross-sectional bathymetry (area of 0.26 km<sup>2</sup> in 2004 and 0.32 km<sup>2</sup> in 2010), calving fluxes were 0.72 km<sup>3</sup>/yr in 2004 and 2.4 km<sup>3</sup>/yr in 2010. These values indicate calving acceleration and are higher than previous estimates obtained in Patagonian glaciers (Warren and Aniya, 1999). The question remains, however, as to whether these calving losses are the cause or the consequence of flow acceleration. The concerted modelling approach needed to answer this question, is beyond the scope of this study.

The dates of the radiocarbon samples collected at Jorge Montt are coincident with previous dendrochronologic samples obtained by Mercer (1970) at Bernardo and Témpano glaciers (Figure 1). Glaciar Bernardo (48°37'S, 73°54'W, 541 km<sup>2</sup> in 2009) currently calves into a lake which formed in 1986 when the terminus retreated 2 km from an outwash within the LIA moraine, dated by Mercer to 270 ± 90 yr BP (Mercer, 1970). The terminus was grounded on the outwash plain in 1945, seen in the US Air Force aerial photos. Based on the age of the trees growing on the outermost moraine Mercer estimated that Glaciar Bernardo reached its maximum extent around AD 1775, only a couple of hundred meters downstream from its 1945 position. Glaciar Témpano (48°43'S, 73°58'W, 292 km<sup>2</sup> in 2009), is a glacier with minor tidewater calving activity at the present, because the ice front is partially grounded at few m above sea level. In this glacier, Mercer (1970) observed four distinct lateral moraines that formed in the past few centuries, most likely around AD 1760, the maximum advance of the local LIA, based on the growth ring pattern on a tilted but living *Pilgerodendron uviferum*, a conifer tree, growing on the outermost moraine. The moraine of the LIA maximum advance at Glaciar Témpano is also very close to its terminal position in 1945; the terminus has since retreated 4.5 km to its present position. Given these dates, these nearby glaciers experienced a simultaneous advance during the LIA, however the magnitudes of the LIA advances were significantly different. Glaciar Jorge Montt has retreated 19.5 km from 1898 position or the LIA maximum, whereas Bernardo retreated only 2 km and Témpano 4.5 km. Differences in calving characteristics could be one contributor to these differences in terminus behaviour, as Bernardo front is grounded and Glaciar Témpano is a tidewater calving glacier with very minor activity when compared to Jorge Montt. In this sense, the bathymetry is more likely the main difference between these glaciers.

Another difference between these glaciers is their hypsometries, or area-altitude distributions (Rivera et al., 2011b). The hypsometries of Glaciares Jorge Montt and Témpano are very similar, with a large accumulation area situated on a broad plateau surrounded by peaks, and a narrow tongue gently flowing down an outlet valley. In contrast, Bernardo has a much steeper accumulation area and a smaller ablation area. Based upon the February 2010 ASTER image, the ELA for all three glaciers was estimated to be approximately 1100 m asl; the resulting accumulation area ratios (AAR) approach 0.62 for Jorge Montt, 0.58 for Témpano and 0.81 for Bernardo.

With a gentle slope at the elevation of the ELA, the mass balance of Jorge Montt is much more sensitive to shifts in the ELA, especially when the ELA intersects the broad accumulation plateau. For a similar rise in ELA, the steeper topography of Bernardo would result in a smaller change in mass balance, i.e., the glacier is less sensitive to climatic change. This condition, and the smaller AAR, partially explains why Jorge Montt and Témpano have retreated more dramatically than Bernardo in the past few decades. Given continued warming in the region, however, a further rise in the ELA at Bernardo may cause the ELA to intersect its flatter upper accumulation area, possibly triggering an accelerated reduction of its AAR and resulting in frontal retreat rates more similar to that seen at its neighbours.

Another interesting characteristic of Glaciar Jorge Montt is the presence of dead, or stagnant, ice along the margins of the retreating tongue. The subaerial topography adjacent to the main glacier tongue is flat enough to anchor some of the ice from the main flow of the glacier. For example, in 1945, the lower part of the glacier flowed over a low ridge on the western flank of the glacier and occupied a lateral valley, where the ice melted *in situ*, with only a small portion of the ice front calving into a proglacial lagoon. The same conditions were observed in 1963, 1997, 2000 and most recently in the time-lapse photos collected between 2010 and 2011. The importance of this “dead ice” is that it can lead to preservation of subglacial and organic material overridden by the ice, such as the buried trees found in 2010. As the ice along these margins is flowing much more slowly than the main glacier tongue, subglacial deposition and minimal abrasion can preserve the pre-glacial landscape. These locations are therefore promising sites for more detailed investigations of material overridden by glacial advance during the LIA, which could be well preserved. The stagnant ice also confirms the importance of calving in driving retreat of the ice front, since the ice that grounded above sea level remained in place for years after the main calving tongue had retreated.

The water depth at the 2010 glacier position has a maximum depth of >391 m, implying a near buoyancy condition for the frontal portion of the ice tongue. The height above buoyancy, or ice thickness in excess of flotation (F), is defined as

$$F = (h + w) - w_{sp} / \rho_p \quad (\text{Eq. 1})$$

where  $w$  is the water depth near the 2010 ice front,  $h$  is the mean ice height above water level near the front,  $\rho_p$  is the ice density ( $900 \text{ kg/m}^3$ ), and  $w_{sp}$  is the density of sea water ( $1024 \text{ kg/m}^3$ ). Given  $w = 391 \text{ m}$  and  $h = 75 \text{ m}$  in 2010,  $F$  yields  $21 \text{ m}$ , a value very close to the ice cliff height of the glacier. Analysing the sequence of time-lapse images obtained with the fixed cameras, the ice front terminates in a clear, prominent tall cliff with heights that fluctuated between 0 and 45 m asl in 2010, with a mean of 22 m asl. In many of the images, a large number of icebergs can be seen calving off the front, several of which were tabular in shape. During the days in which tabular icebergs were generated, the height of the ice cliff is less than 20 m, hence the ice was near floating conditions. When flotation conditions occur, retreat is much more rapid than during periods when the front is grounded.

## 5. Conclusions

Glaciar Jorge Montt has experienced the fastest rates of retreat observed in Patagonia during historical times and one of the fastest rate of calving in recent decades. Jorge Montt is one of the few glacier basins for which regular data of glacier extent are available, allowing for a detailed monitoring of its fluctuations in the last 112 years (December 1898 to January 2011). This record of ice front fluctuations, combined with a bathymetric survey of the glacier-abandoned fjord, suggests that water depth is a key factor explaining the variability and magnitude of retreat over the past century. The maximum retreat rates correlate well with deepest waters in the fjord, indicating that the ice was at/or very close to buoyancy conditions throughout much of the past few decades; a condition that can be catastrophic for a temperate calving glacier like Jorge Montt. Near buoyancy conditions were observed in the time-lapse imagery collected from the ice front in 2010 based on the fact that tabular icebergs were observed calving from the terminus, suggesting that large portions of the front were at or near flotation. Rapid calving into deeper water clearly drove catastrophic retreat during the 1990s, and again from 2009 to 2011 when the front reached the deepest part of the fjord (-391 m b.s.l.). In contrast, the glacier was stable when its front was grounded on an underwater morainic arc in the outer fjord coincident with the 1898 position of the glacier, and again in 1945 when it grounded on the submarine ridge separating the outer from the inner fjord.

Radiocarbon dating of samples collected near the present glacier front indicates that the glacier front was at its current 2011 position just before the Little Ice Age period. During the LIA advance, a proglacial forest was overridden and remained buried and preserved throughout the LIA, and re-appeared in 2003 when the ice covering the dead trees retreated. During the LIA the glacier advanced to most likely stabilize at the 1898 position, as the terminus location in 1898 is coincident with a well preserved submerged arcuate moraine, typically generated when the ice advances, removes and reworks subglacial deposits to accumulate in an arcuate form at the maximum (e.g. LIA maximum) position.

One of the buried trees found at Jorge Montt, close to the ice front in 2010, is of similar age to that of tree samples collected near the 1945 positions of Glaciares Bernardo and Témpano, ~50 km to the southwest. As such, the age of that LIA advance was simultaneous in at least this part of the SPI. However, the question remains as to why these glaciers exhibited significant differences in the magnitude of their retreat since the LIA maxima: both Bernardo and Témpano were very close to their LIA maxima in 1945 and have only retreated 2-5 km since, whereas Jorge Montt advanced and retreated approximately 19 km south of its LIA maximum. The main cause of this difference in LIA extent and subsequent retreat is in the calving dynamics of each of these glaciers, which for Jorge Montt may be influenced by near-flotation conditions in the deep proglacial fjord. Another possible cause of differences in glacier length changes could be related to the hypsometries of these glaciers. The present location of the ELA at Jorge Montt and Témpano is flatter than for Bernardo, suggesting that Jorge Montt is much more sensitive to ELA shifts compared to neighbouring glaciers with steeper hypsometries at the present ELA.

The above description of Glaciar Jorge Montt behaviour is an example of the Tidewater Calving Glacier Cycle (TWG) described by Post et al., (2011), where advances are



characterized by moderate ice flow and low calving activity (like the behaviour described by Skvarca et al., (2003) of Glaciar Upsala between 1999 and 2001); stability, characterized by a grounded glacier front thanks to the development of a submarine terminal moraine (like Glaciar Jorge Montt in 1898 and in 1945-1990); and where rapid catastrophic retreats are a result of coupled rates of ice flow and calving (like Glaciar Jorge Montt between 1990 and the present). In this sense, the significant differences in response to Little Ice Age cooling for nearby and relatively similar glaciers in Patagonia highlight the importance of glacier shapes, ice front dynamics related to calving activity and the inner fjords characteristics, all factors controlling ice mass responses to regional changes in climate and ocean.

### ***Acknowledgements***

This research was funded by Fondecyt 1080320. We thank JC and Allen Szydlowski (Waters of Patagonia) for providing fantastic logistical support in the field. Bernard Hallet, Chuck Nittrouer, Katie Boldt and Adam Barker from University of Washington, USA, Dick Sylwester, Golder Associates Inc., David Farías, Camilo Rada and Sebastián Cisternas from CECS, Claudia Mansilla and Carla Henríquez from CEQUA, collaborated with this research. The University of Washington participation was rendered possible by funding from the Quaternary Research Center. Satellite images were provided by GLIMS. Andrés Rivera also thanks the Guggenheim Foundation. Thanks to Eric Rignot who provided ice velocity data. NASA-Wallops provided ATM data. The Chilean Navy provided the Orion P3 for surveying the glaciers in 2002 and 2008.

### **References**

- Aniya, M., Sato, H., Naruse, R., Skvarca P., and Casassa, G.: The use of satellite and airborne imagery to inventory outlet glaciers of the Southern Patagonia Icefield, South America. *Photogrammetric Engineering and Remote Sensing*, 62, 1361-1369, 1996.
- Bamber, J., and. Rivera, A.: A review of remote sensing methods for glacier mass balance determination. *Global and Planetary Change*, 59, 138-148, 2007.
- Benn, D., Warren, C., and Mottram, R.: Calving processes and the dynamics of calving glaciers. *Earth Science Reviews* 82, 143–179, 2007.
- Bertrand, A.: Expedición de Juan Ladrillero (1557 a 1559). *Anuario hidrográfico de la Marina de Chile*, 6, 453-525, 1880.
- Casassa, G., Brecher, H., Rivera, A. and Aniya, M.: A Century-long Record of Glaciar O'Higgins, Chilean, Patagonia. *Annals of Glaciology*, 24, 106-110, 1997.
- Cuffey, K. and Paterson, W.: *The Physics of Glaciers*. 4 th edition. Academic Pr. 693 pp., 2010.
- Enomoto H. and Abe, Y.: Reconnaissance Studies of meteorology and glaciology in Steffen and Jorge Montt Glaciers Patagonia. In Naruse R. (ed.) *Glaciological and Meteorological Studies in Patagonia Chile by Japanese Research Expeditions in 1967-1982*. Data centre for glacier research, Japanese Society of Snow and Ice, 11-14, 1983.

Glasser, N., Harrison, S., Jansson, K., Anderson K., and Cowley, A.: Global sea-level contribution from the Patagonian Icefields since the Little Ice Age maximum. *Nature Geoscience*, 4, 203-207, 2011.

King, P.: Narrative of the surveying voyages of His Majesty's Ships Adventure and Beagle between the years 1826 and 1836, describing their examination of the southern shores of South America, and the Beagle's circumnavigation of the globe. Proceedings of the first expedition, 1826-30, under the command of Captain P. Parker King, R.N., F.R.S. London: Henry Colburn, 1839.

Krabill, W., Thomas, R., Jezek, K., Kuivinen, K., and Manizade, S.: Greenland ice-sheet thickness changes measured by laser altimetry. *Geophysical Research Letters* 22 (17), 2341–2344, 1995.

López, P., Chevallier, P., Favier, V., Pouyaud, B., Ordenes, F., and Oerlemans, J.: A regional view of fluctuations in glacier length in southern South America. *Global and Planetary Change*, 71, 85–108, 2010.

Mann, M.: Medieval Climatic Optimum. In: M. MACCRACKEN and J. PERRY (Eds.) *Encyclopedia of Global Environmental Change*. John Wiley & Sons, Ltd, Chichester, pp. 514-516, 2002.

Masiokas, M., Rivera, A., Espizúa, L., Villalba, R., Delgado S., and Aravena, J.C.: Glacier fluctuations in extratropical South America during the past 1000 years. *Palaeogeography, Palaeoclimatology, Palaeoecology* 281, 242–268, 2009.

Meier, M. and Post, A.: Fast Tidewater Glaciers. *J. Geophys. Res.* 92 B9., 9051–9058, 1987.

Mercer, J.H.: Variations of some Patagonian glaciers since the Late-Glacial: II. *American Journal of Science* 269, 1–25, 1970.

Naruse, R. and Skvarca, P.: Dynamic features of thinning and retreating Glaciar Upsala, a lacustrine Calving Glacier in Southern Patagonia. *Arctic, Antarctic, and Alpine Research*, 32 (4), 485-491, 2000.

Paul, F., Kääb, A., Maisch, M., Kellenberger, T., and Haeberli, W.: The new remote sensing derived Swiss glacier inventory I: Methods. *Annals of Glaciology*, 34, 355-362, 2002.

Post, A., O'Neel, S., Motyka, R., Streveler, G.: A complex relationship between calving glaciers and climate. *EOS*, 92(37), 305-306, 2011.

Pozo, J.: Hans Steffen: Maestro, Geógrafo y Pionero de la Patagonia Occidental *Revista Universum*, 20(1), 112 – 123, 2005.

Prieto, M. and Herrera, R.: Naos, clima y glaciares en el Estrecho de Magallanes durante el siglo XVI. *Anuario de Estudios Americanos*, 55(2), 413-439, 1998.

Rignot, E., Rivera, A., and Casassa, G.: Contribution of the Patagonia icefields of South America to global sea level rise. *Science*, 302, 434-437, 2003.

Rivera, A., Aravena, J.C., and Casassa, G.: Recent Fluctuations of Glaciar Pío XI, Patagonia: Discussion of a Glacial Surge Hypothesis. *Mountain Research and Development*, 17(4), 309-322, 1997a.

Rivera, A., Lange, H., Aravena, J.C., and Casassa, G.: The 20th Century Advance of Glaciar Pío XI, Southern Patagonia Icefield. *Annals of Glaciology*, 24, 66-71, 1997b.

Rivera, A., Benham, T., Casassa, G., Bamber, J., and Dowdeswell, J.: Ice elevation and areal changes of glaciers from the Northern Patagonia Icefield, Chile. *Global and Planetary Change*, 59, 126-137, 2007.

Rivera, A., Corripio, J., Bown, F., Rada, C., and Bravo, C.: Patagonian tidewater calving glacier dynamics derived from a full year movie obtained by a fix camera. In: *Interactions of Ice Sheets and Glaciers with the Ocean symposium*, SCRIPPS, San Diego, USA. Abstract 60A152, 2011a.

Rivera, A., Cawkwell, F., Rada, C., and Bravo, C.: Hypsometry. In: V. SINGH, P. SINGH and U. HARITASHYA (Eds.). *Encyclopedia of Snow Ice and Glaciers*. Springer, The Netherlands, pp. 551-554, 2011b.

Skvarca, P., De Angelis, H., Naruse, R., Warren, C., and Aniya, M.: Calving rates in fresh water: new data from southern Patagonia. *Annals of Glaciology* 34, 379–384, 2002.

Skvarca, P., Raup, B., De Angelis, H.: Recent behaviour of Glaciar Upsala, a fast-flowing calving glacier in Lago Argentino, southern Patagonia. *Annals of Glaciology* 36, 184-188, 2003.

Steffen, H.: Informe preliminar sobre los trabajos de la Comisión exploradora del Canal i Rio Baker, ejecutados en la zona del litoral patagónico, comprendida entre los 46° y 48° de latitud sur (diciembre de 1898). In: Risopatrón, L. 1905, *La Cordillera de los Andes entre las latitudes 46° i 50° S*. Imprenta Cervantes, Santiago, pp. 113-145, 1898.

Steffen, H.: Viajes de exploración i estudio en la Patagonia occidental 1892-1902. *Anales de la Universidad de Chile*, Tomo 1 and 2, 549 pp., 1910.

Stuefer, M., Rott, H., and Skvarca, P.: Glaciar Perito Moreno, Patagonia: Climate sensitivities and glacier characteristics preceding the 2003/2004 and 2005/2006 damming events. *Journal of Glaciology*, 53 (180), 1-13, 2007.

Talma, A. and Vogel, J.: A Simplified Approach to Calibrating C14 Dates. *Radiocarbon* 35(2), 317-322, 1993.

Villalba, R.: Tree-Rings and glacial evidence for the Medieval Warm Epoch and the Little Ice Age in Southern South America. *Climatic Change*, 26(2-3), 183-197, 1994.

Villalba, R., Lara, A., Boninsegna, J.A., Masiokas, M., Delgado, S., Aravena, J.C., Roig, F.A., Schmelter, A., Wolodarsky, A., and Ripalta, A.: Large-scale temperature changes across the southern Andes: 20th-century variations in the context of the past 400 years. *Climatic Change* 59, 177–232, 2003.

Warren, C. and Aniya, M.: The calving glaciers of southern South America. *Global and Planetary Change* 22, 59-77, 1999.

## Tables

**Table 1.** Data used to calculate frontal variations of Jorge Montt Glacier, 1898-2011.

Date (month/day/year)	Sensor	Spatial Resolution (m)
12/18/ 1898	Historical record (Steffen 1898)	Not applicable
Summer 1944/1945	TRIMETROGON aerial photographs	Oblique
08/26/1963	Declassified Corona satellite image	Not available
Summer 1974/1975	Mc Hurd aerial photographs	Not available
02/25/1976	Landsat MSS	79
03/08/1979	Landsat MSS	79
03/20/1979	Keyhole KH-9	Not available
12/26/1984	Landsat TM	30
10/04/1986	Landsat TM	30
Summer 1990	Landsat TM	30
02/04/1997	Landsat TM	30
10/27/2000	Landsat ETM+	30
04/02/2003	Landsat ETM+	30
02/04/2008	ASTER	15
06/05/2009	ASTER	15
02/25/2010	ASTER	15
01/15/2011	Terrestrial photography	Not applicable

**Table 2.** Frontal variations and water depths along the centreline of the Jorge Montt new fjord.

Period	Number of years (m)	Frontal retreat (m/yr)	Frontal change rate (m)	Mean water depth (m)	Maximum water depth (m)
1898-1945	46	6731	-146	-67	-115
1945-1963	18	195	-11	-115	-140
1963-1976	13	530	-41	-140	-168
1976-1979	3	321	-107	-130	-175
1979-1984	5	562	-112	-150	-221
1984-1986	2	41	-20	-220	-228
1986-1990	4	240	-60	-200	-240
1990-1997	7	6600	-943	-220	-370
1997-2000	3	1828	-609	-310	-342
2000-2003	3	422	-141	-210	-279
2003-2008	5	570	-114	-150	-220
2008-2009	1.3	400	-308	-220	-332
2009-2010	0.7	403	-576	-290	-391
2010-2011	0.9	644	-716	Not available	Not available

## Figure Legends

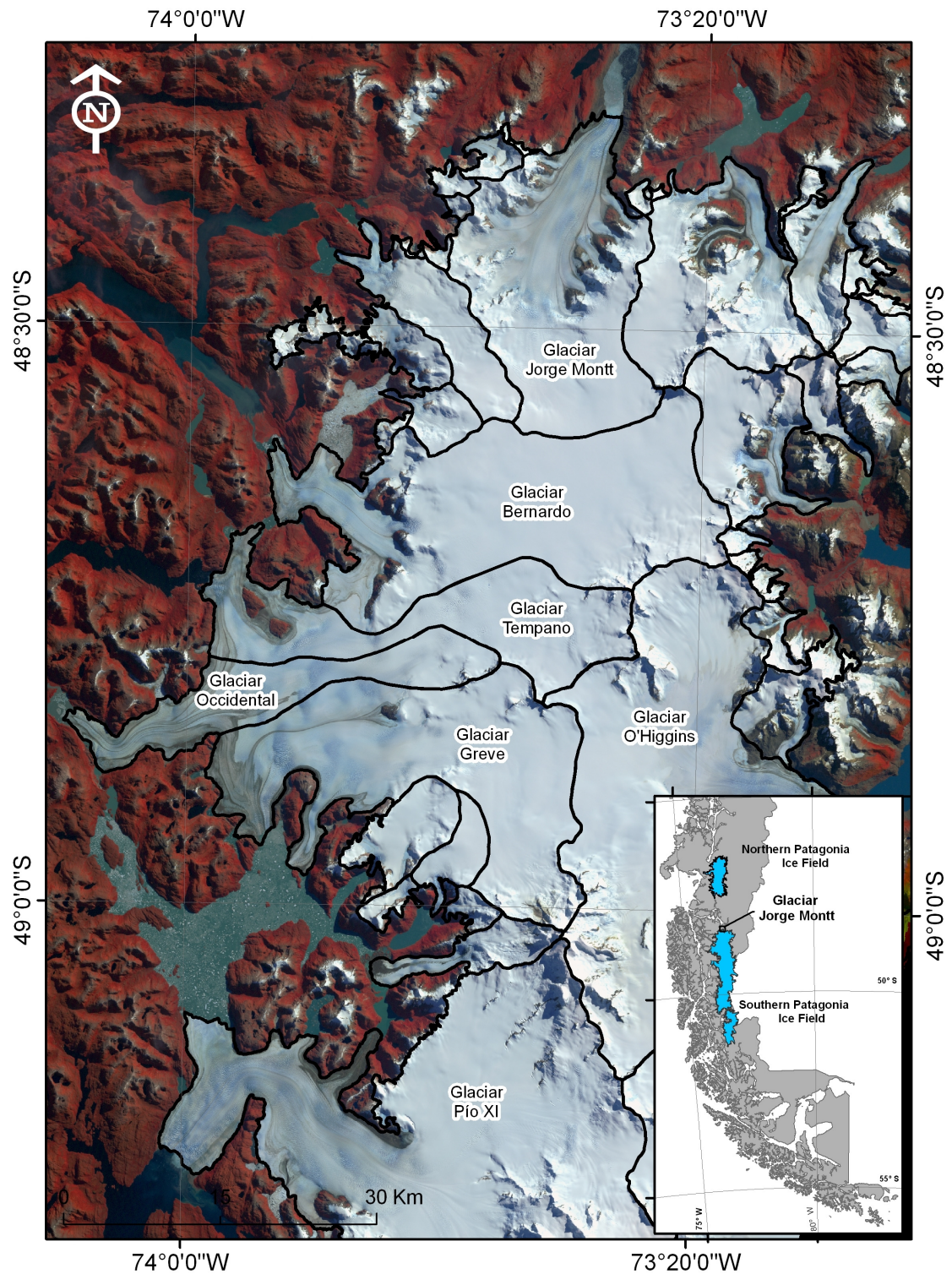


Figure 1. The main glacier basins of the northern part of the SPI. The background satellite image was acquired on April, 2, 2003.



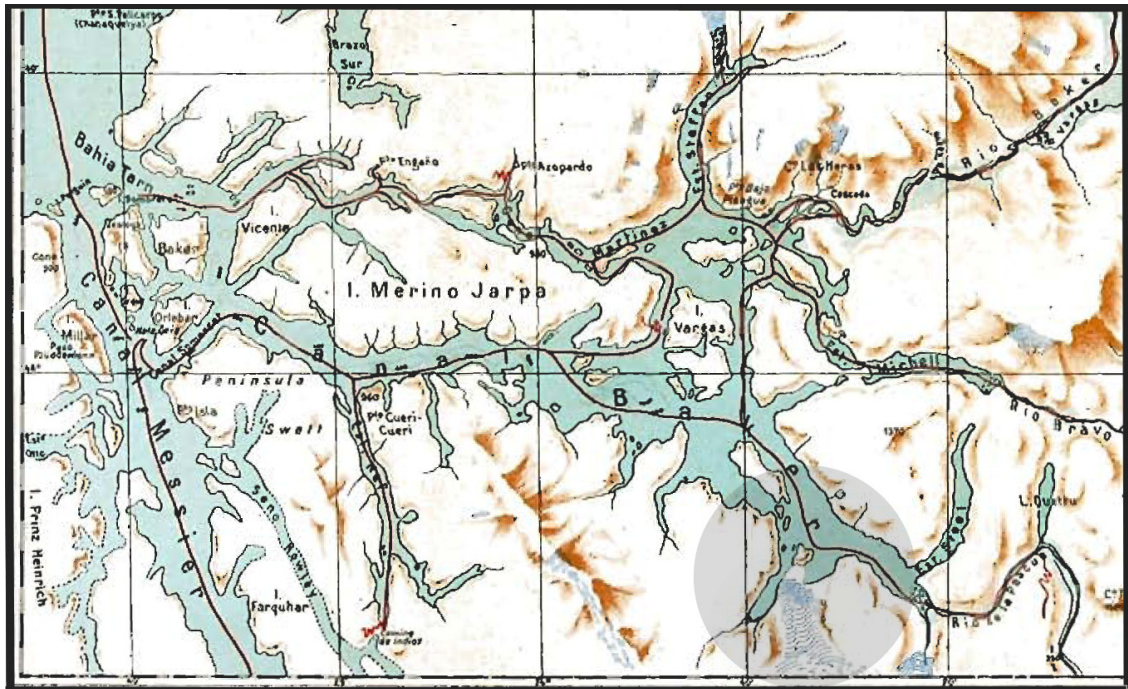


Figure 2. Close up of the first map of the northern edge of the SPI as drawn by Steffen in 1898 and published by Steffen (1910). The frontal position of Glaciar Jorge Montt, ~4 km from Canal Baker, is indicated by the grey circle.



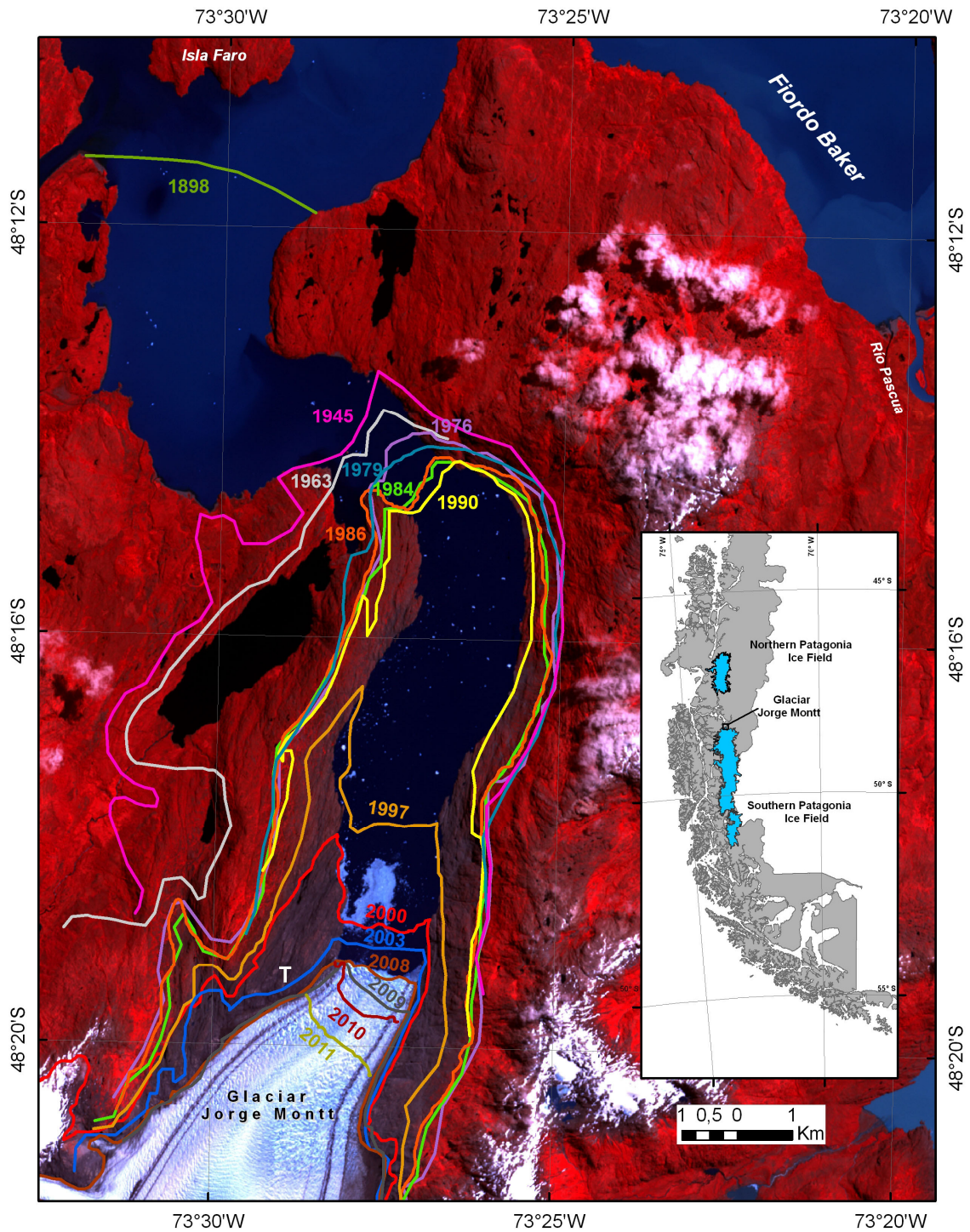


Figure 3. Frontal positions of Glaciar Jorge Montt, 1898-2011. The location of the dendrochronology sampling site is indicated to the west of the 2010 terminus (Letter T). The background ASTER image was acquired on February 4, 2008.

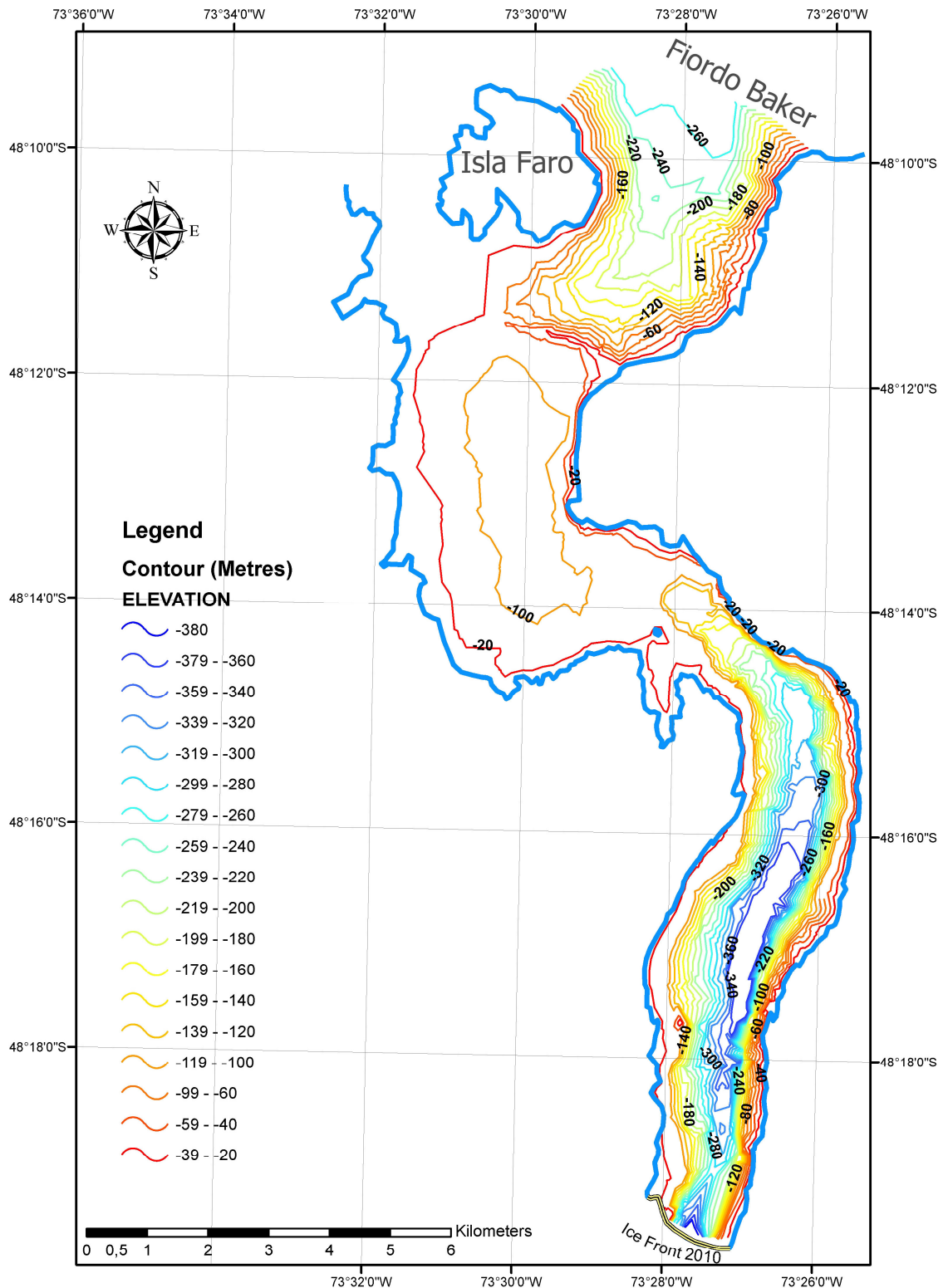


Figure 4. Bathymetric contour lines from the January 2010 glacier front north to Fiordo Baker (Canal Baker). The glacier front at the end of the Little Ice Age, in 1898, was located near the junction with Fiordo Baker, 1 km south of Isla Faro, where the bathymetry shows a shallow transverse ridge approximately 20 m below sea level.

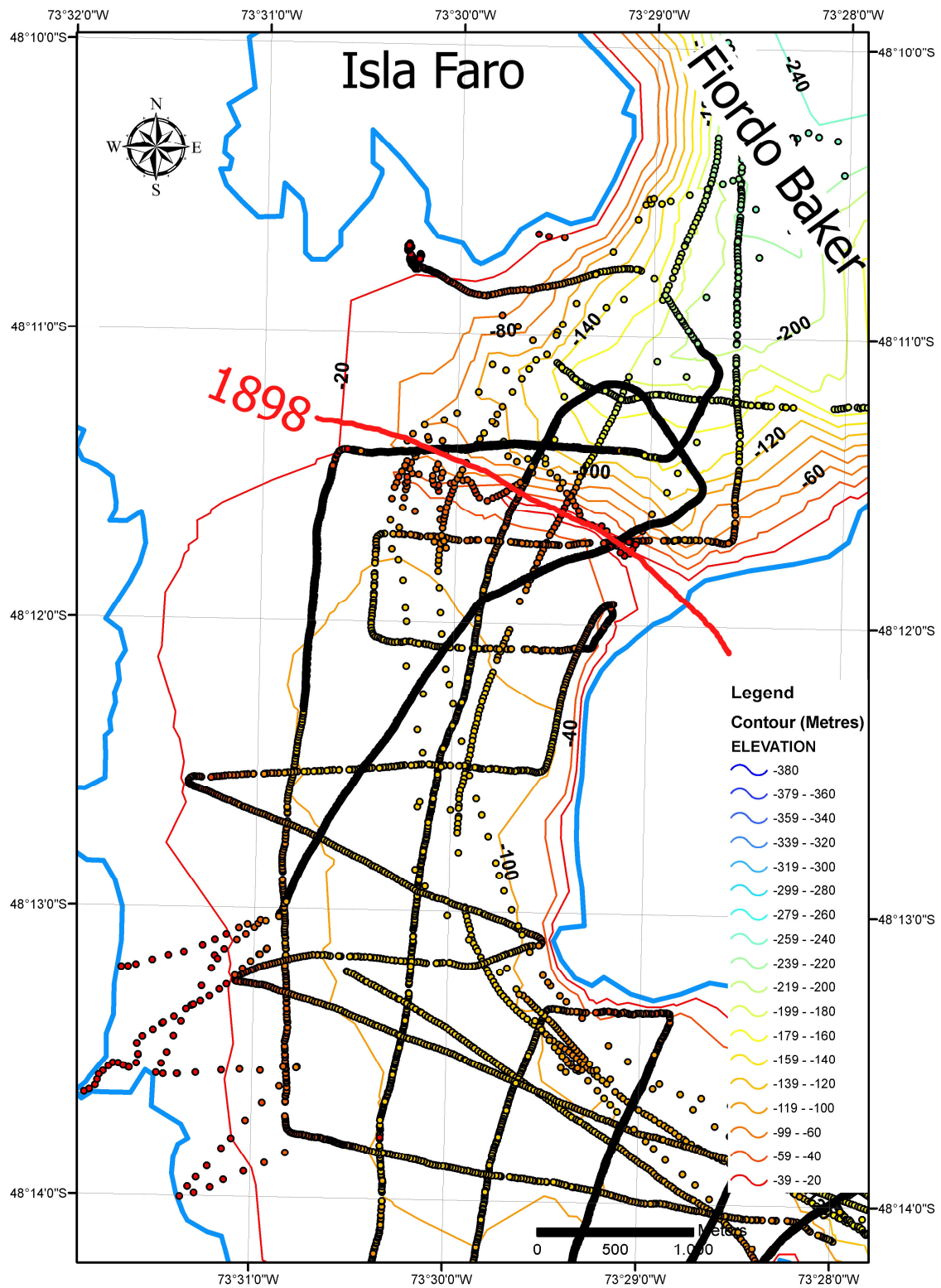


Figure 5. Data points and interpolated contour lines used to determine bathymetry in the outer fjord, near the 1898 ice front.



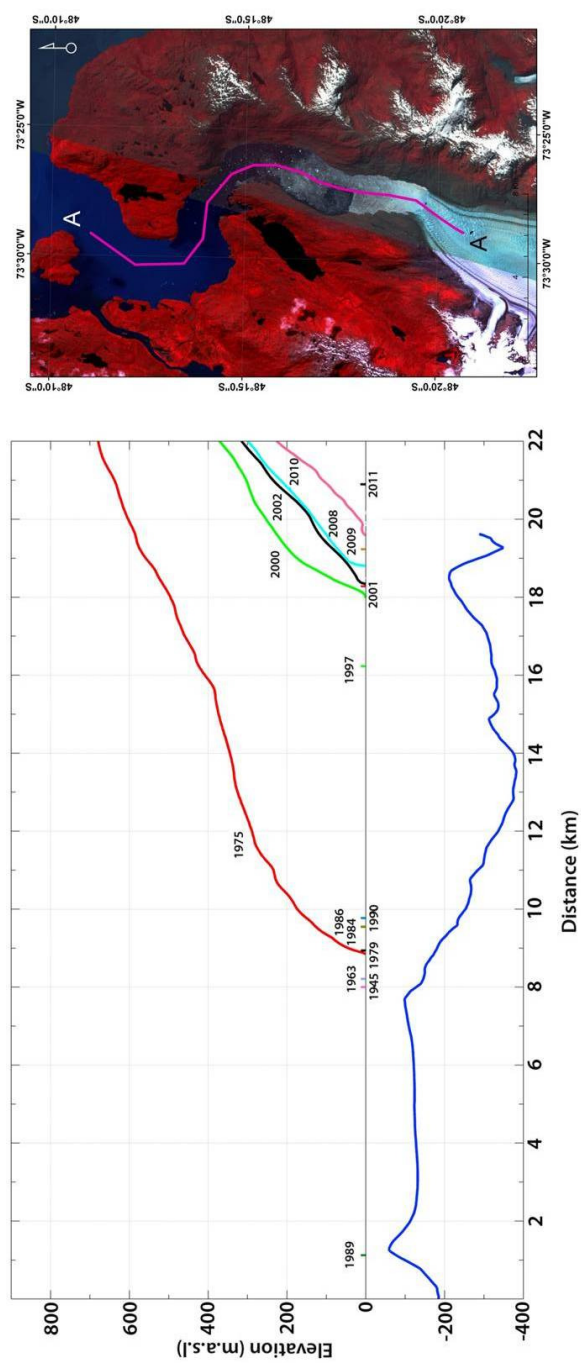


Figure 6. Longitudinal profile A-A' along the main axis of the fjord, including the frontal positions of the glacier, the glacier surface topography (coloured lines) and the bathymetry (black line). The inset satellite image (February, 2010) shows the location of profile A-A'.



Figure 7. The buried trees were found near the glacier front in February, 2010. In January 2011, cross sections were obtained from these trees (Sample 1 from the tree indicated by the left red arrow, and Sample 2 from the tree pointed by the right red arrow). The left side of the image shows brash ice covering the fjord surface waters near the glacier front.

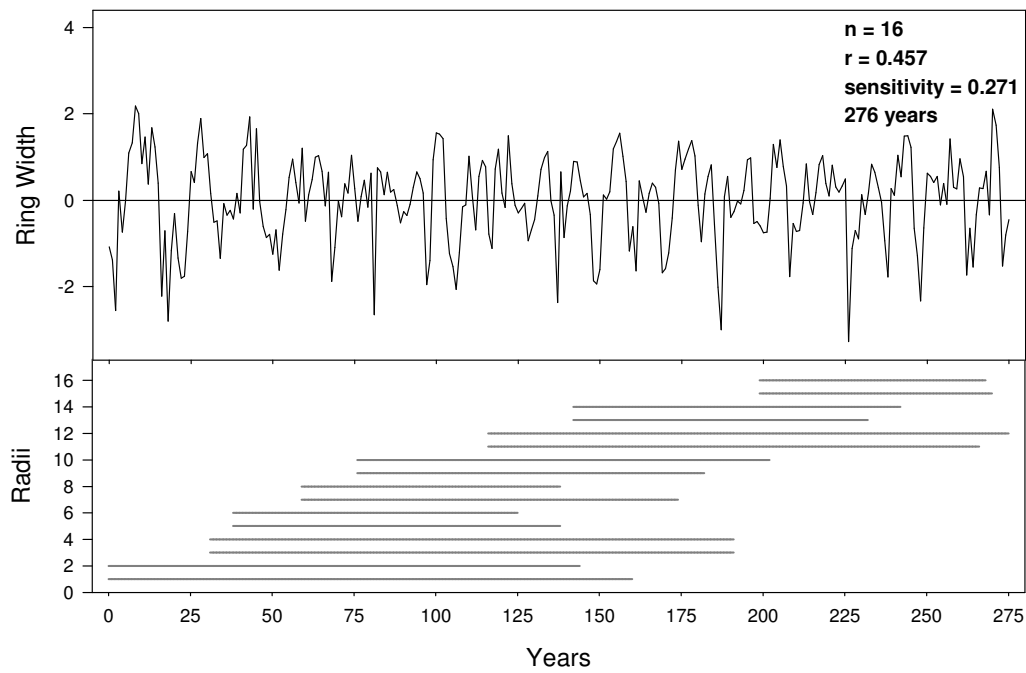


Figure 8. Tree ring floating chronology (top graph) from 16 radii measured from 13 cross-sections collected near the 2010 ice front, covering 276 years. Mean ring-width series shows high interannual variability and no significant trend. Bottom graph indicates the series included and the timespan of each one.

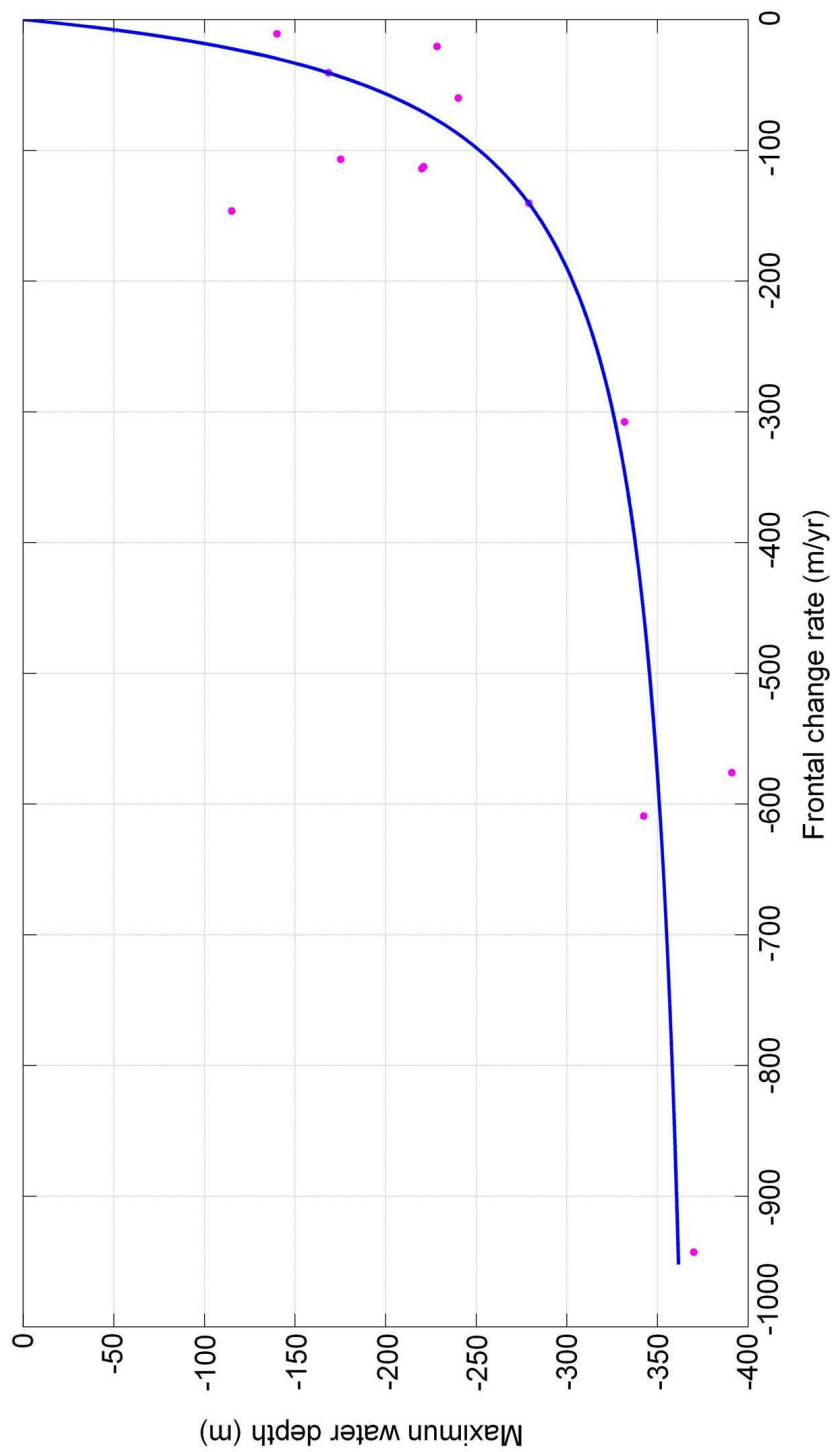


Figure 9. Relationship between frontal change rates and maximum water depths in Jorge Montt Fjord. The blue line indicates a polynomial best fit regression ( $r^2 = 0.67$ ) between frontal change rate and water depth.

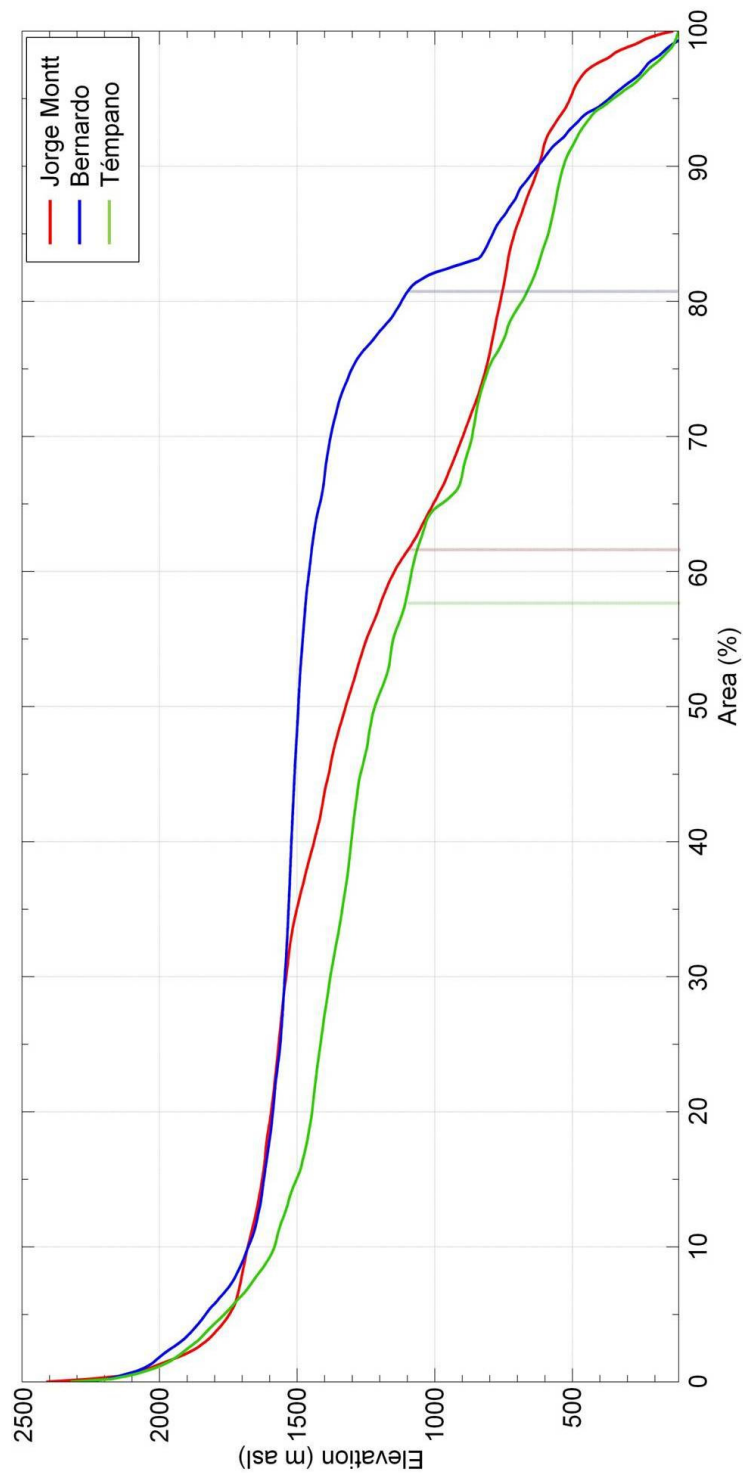


Figure 10. Hypsometric curves of Glaciares Jorge Montt, Bernardo and Témpano, derived from 2000 A.D. SRTM digital elevation model. Modern ELA for all three glaciers was estimated at 1100 m asl. The dashed vertical lines the AAR position for each glacier. AAR for Bernardo is 0.80, much higher than Jorge Montt (0.61) and Témpano (0.58). The present ELA at Jorge Montt is approaching the main plateau, whilst at Témpano it intersects the main plateau. At Bernardo, the present ELA is still within the steeper lower part of the glacier.