

## ***Interactive comment on “Characteristics of cold-warm variation in the Hetao region and its surrounding areas in China during the past 5000 yr” by M. Li et al.***

**M. Li et al.**

limq.07b@igsnrr.ac.cn

Received and published: 15 April 2010

The comment was uploaded in the form of a supplement:  
<http://www.clim-past-discuss.net/6/C93/2010/cpd-6-C93-2010-supplement.pdf>

Interactive comment on Clim. Past Discuss., 6, 1, 2010.

Full Screen / Esc

Printer-friendly Version

Interactive Discussion

Discussion Paper



Interactive  
Comment

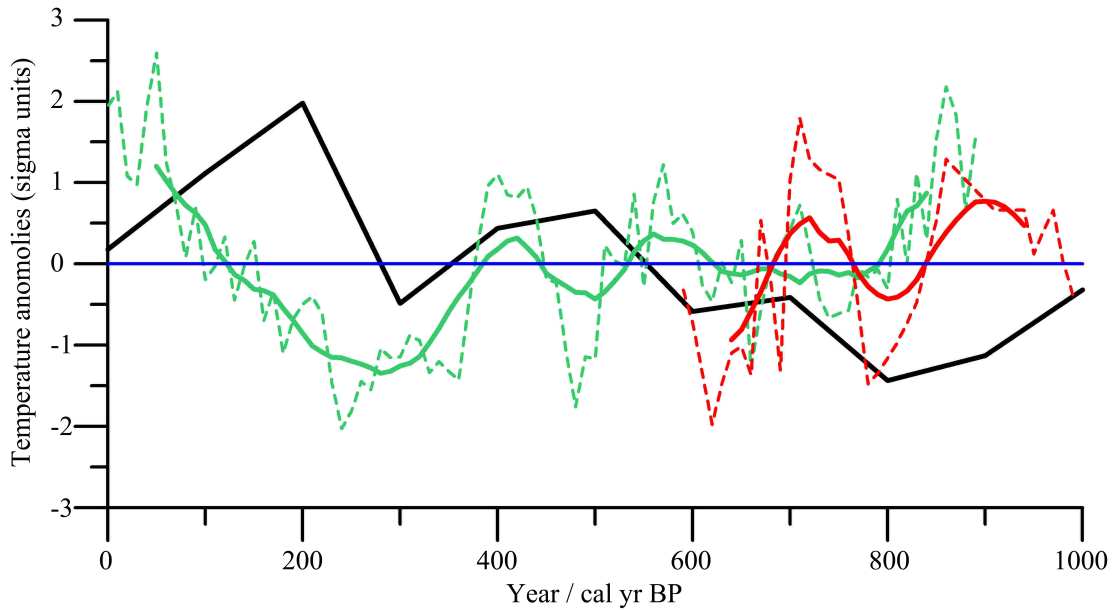


Fig. 1.

Full Screen / Esc

Printer-friendly Version

Interactive Discussion

Discussion Paper