

# ***Interactive comment on “Synchronizing the Greenland ice core and radiocarbon timescales over the Holocene – Bayesian wiggle-matching of cosmogenic radionuclide records” by F. Adolphi and R. Muscheler***

**F. Adolphi and R. Muscheler**

florian.adolphi@geol.lu.se

Received and published: 9 November 2015

Dear Reviewers #1 & #2,

we would like to thank you for your effort reviewing our manuscript and your constructive and helpful comments. We uploaded our point-by-point reply in a pdf document.

Best,

Florian Adolphi & Raimund Muscheler

Full Screen / Esc

Printer-friendly Version

Interactive Discussion

Discussion Paper



Please also note the supplement to this comment:

<http://www.clim-past-discuss.net/11/C2266/2015/cpd-11-C2266-2015-supplement.pdf>

---

Interactive comment on Clim. Past Discuss., 11, 2933, 2015.

**CPD**

11, C2266–C2270, 2015

---

Interactive  
Comment

Full Screen / Esc

Printer-friendly Version

Interactive Discussion

Discussion Paper

C2267



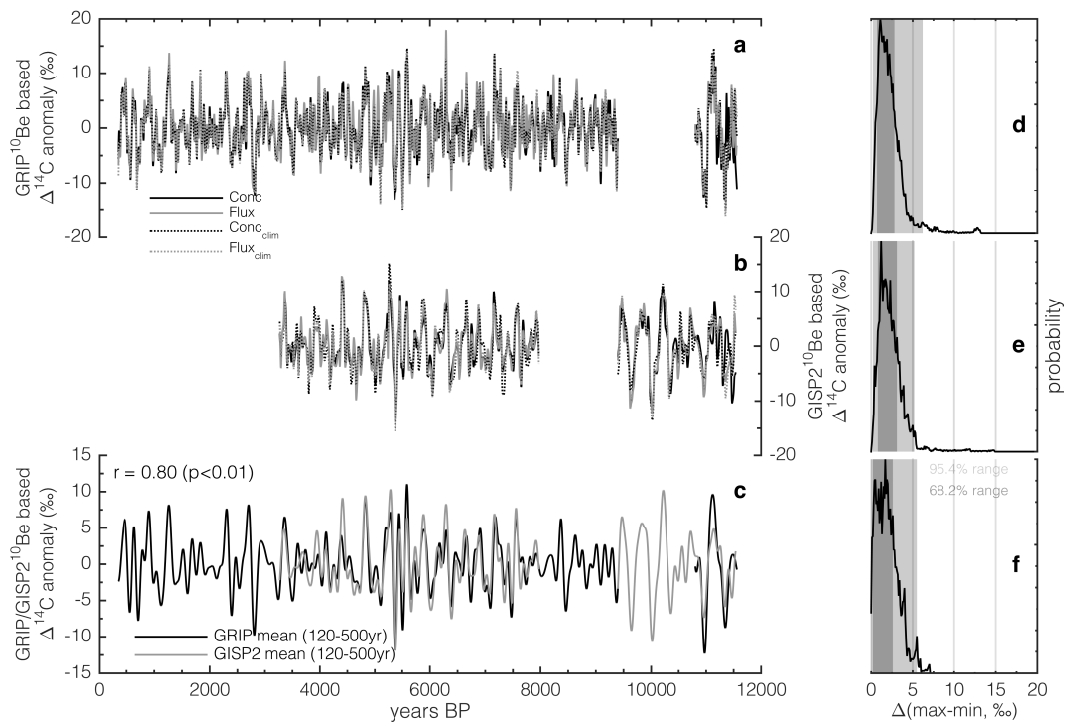


Fig. 1. Figure3\_revised

[Interactive Comment](#)[Full Screen / Esc](#)[Printer-friendly Version](#)[Interactive Discussion](#)[Discussion Paper](#)

Interactive  
Comment

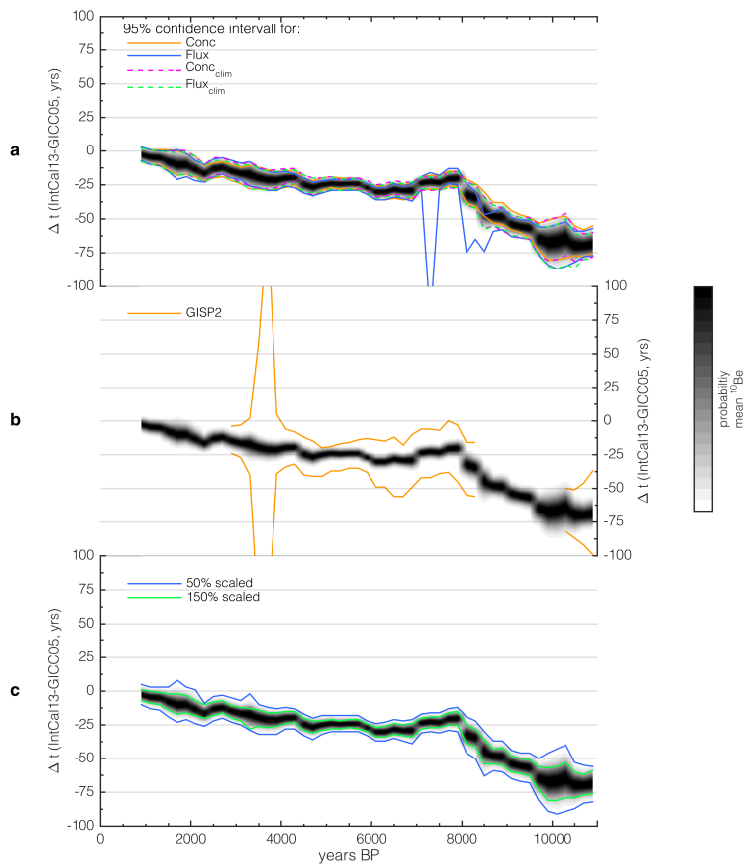


Fig. 2. Figure5\_color

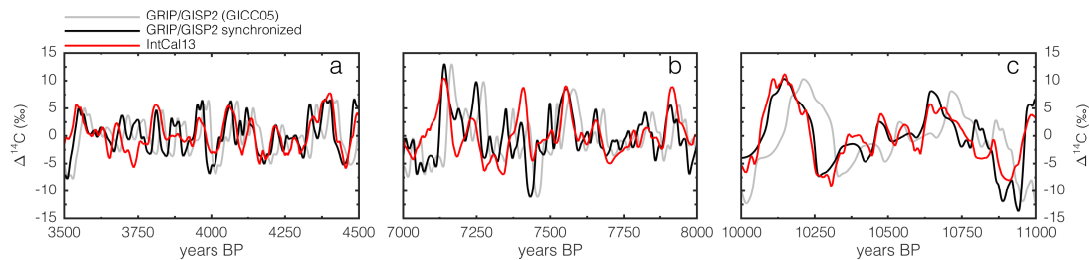
Full Screen / Esc

Printer-friendly Version

Interactive Discussion

Discussion Paper



**Fig. 3.** Figure10\_new[Full Screen / Esc](#)[Printer-friendly Version](#)[Interactive Discussion](#)[Discussion Paper](#)