

Interactive comment on “Climatic variability and human impact during the last 2000 years in western Mesoamerica: evidences of late Classic and Little Ice Age drought events” by A. Rodríguez-Ramírez et al.

A. Rodríguez-Ramírez et al.

maga@geofisica.unam.mx

Received and published: 17 August 2015

We agree to change Figure 2 to calibrated ages. Following the editor recommendation we added the position of the Toba Jala in our sequence in this figure and the reported calibrated radiocarbon ages for this tefra according to Sieron and Siebe 2008.

Interactive comment on Clim. Past Discuss., 11, 1887, 2015.

Full Screen / Esc

Printer-friendly Version

Interactive Discussion

Discussion Paper



Interactive
Comment

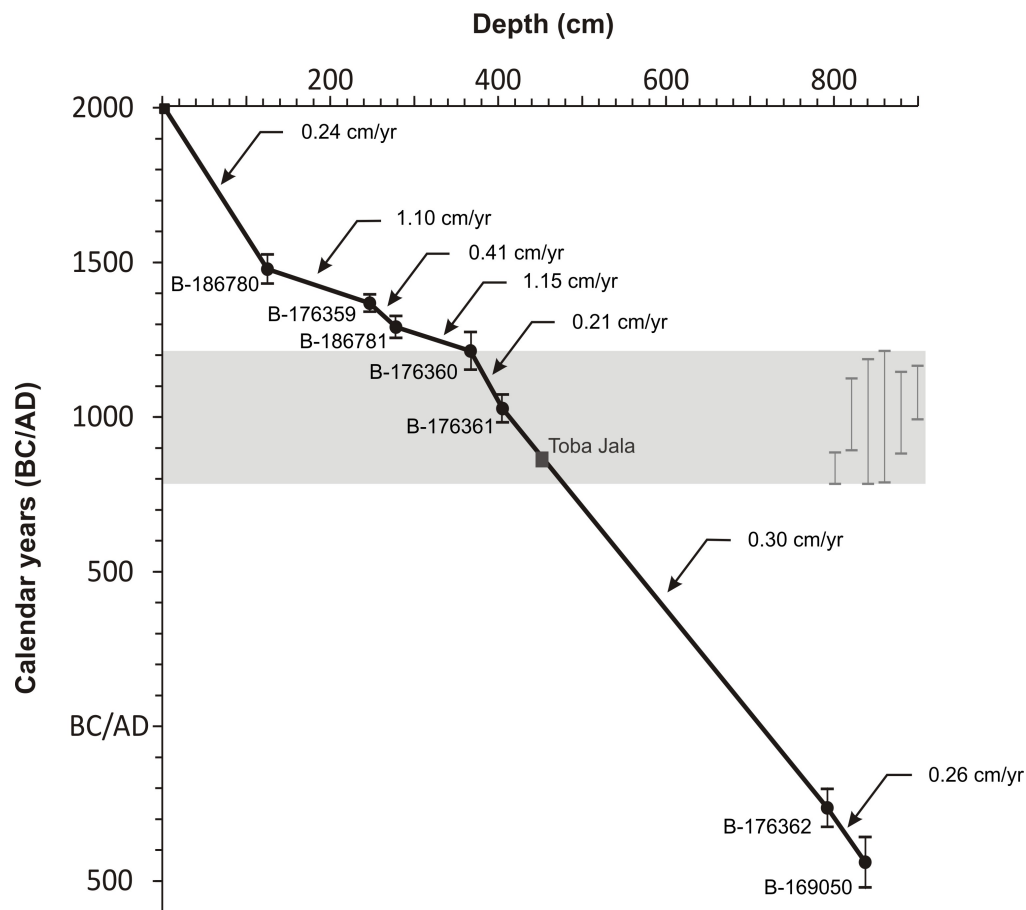


Fig. 1.

Full Screen / Esc

Printer-friendly Version

Interactive Discussion

Discussion Paper

