

Supplement of *Clim. Past Discuss.*, 11, 805–830, 2015
<http://www.clim-past-discuss.net/11/805/2015/>
doi:10.5194/cpd-11-805-2015-supplement
© Author(s) 2015. CC Attribution 3.0 License.

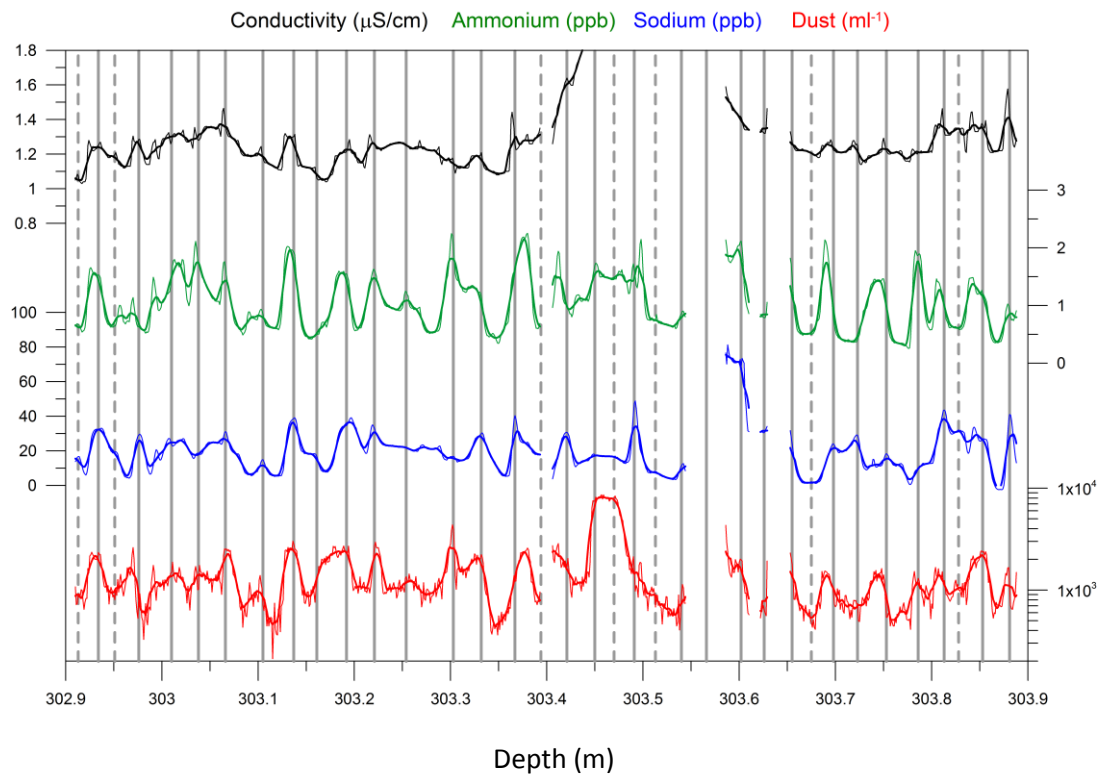
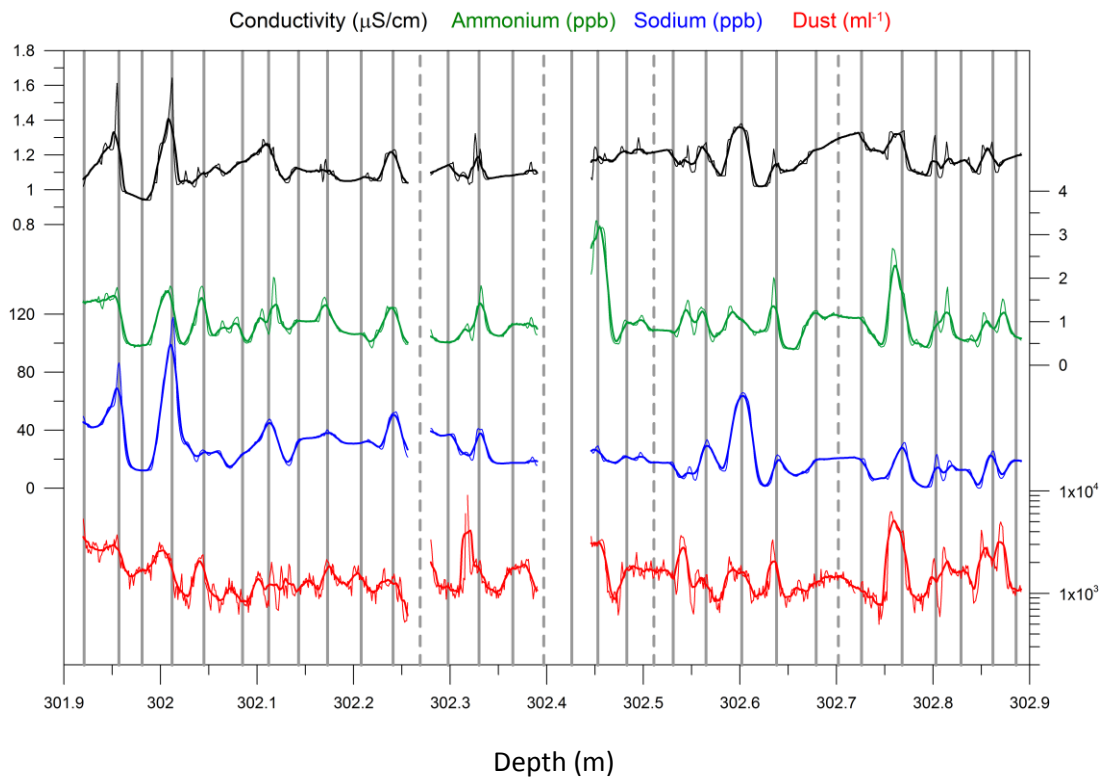


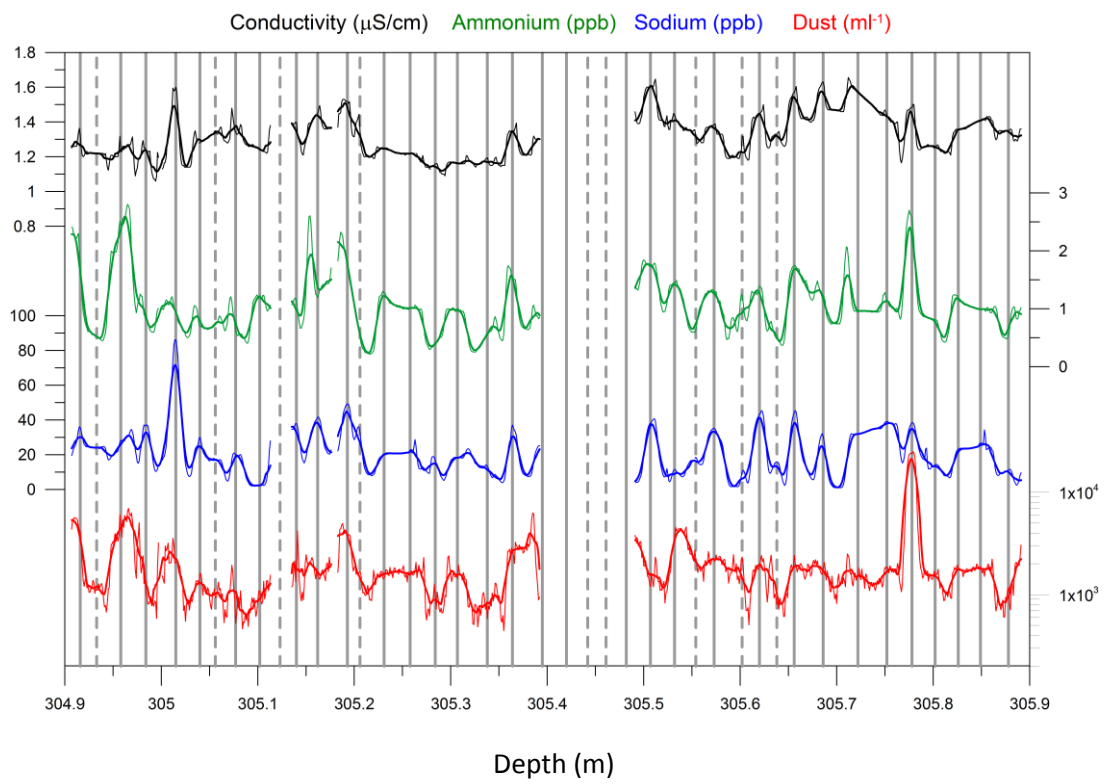
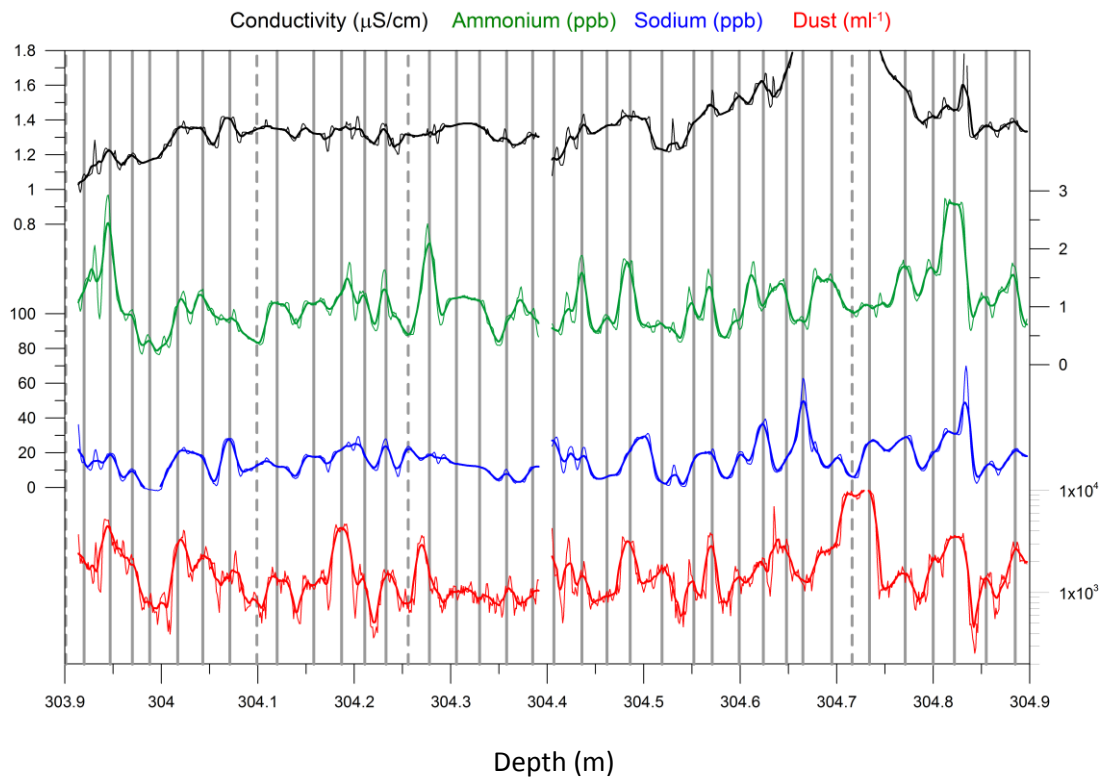
Supplement of

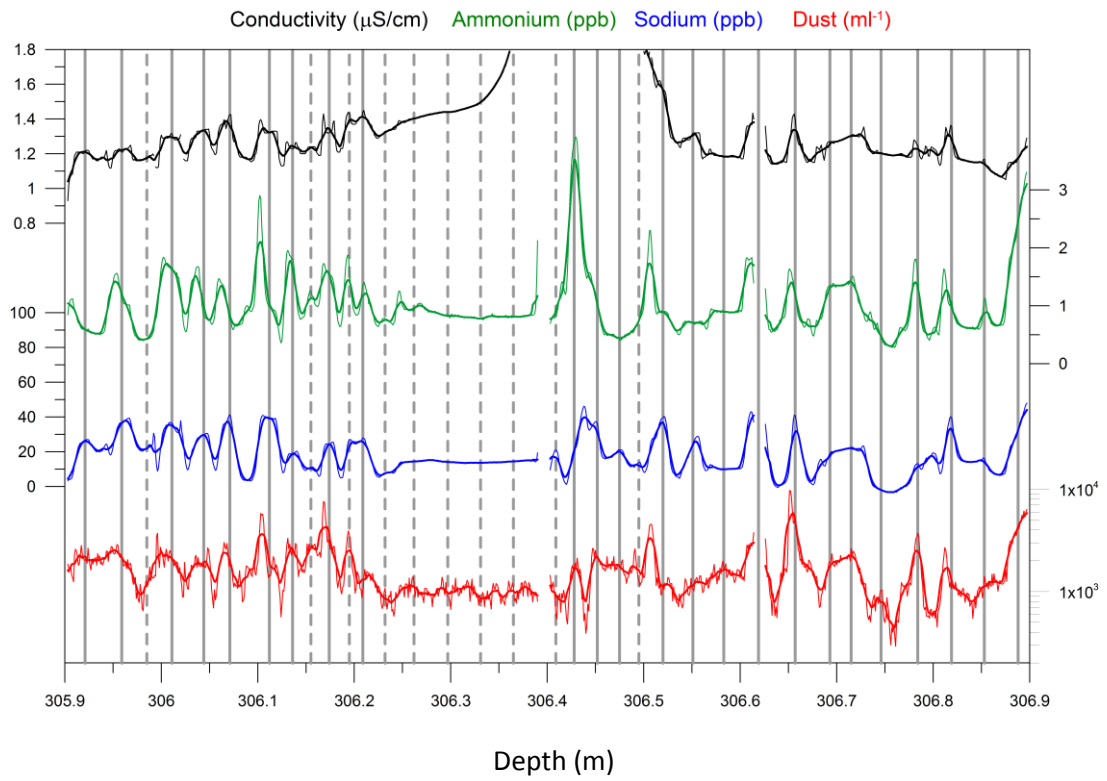
On the occurrence of annual layers in Dome Fuji ice core early Holocene ice

A. Svensson et al.

Correspondence to: A. Svensson (as@gfy.ku.dk)







Figures S1-S5 showing the analyzed 5 m of CFA records in high resolution including suggested layer marks.

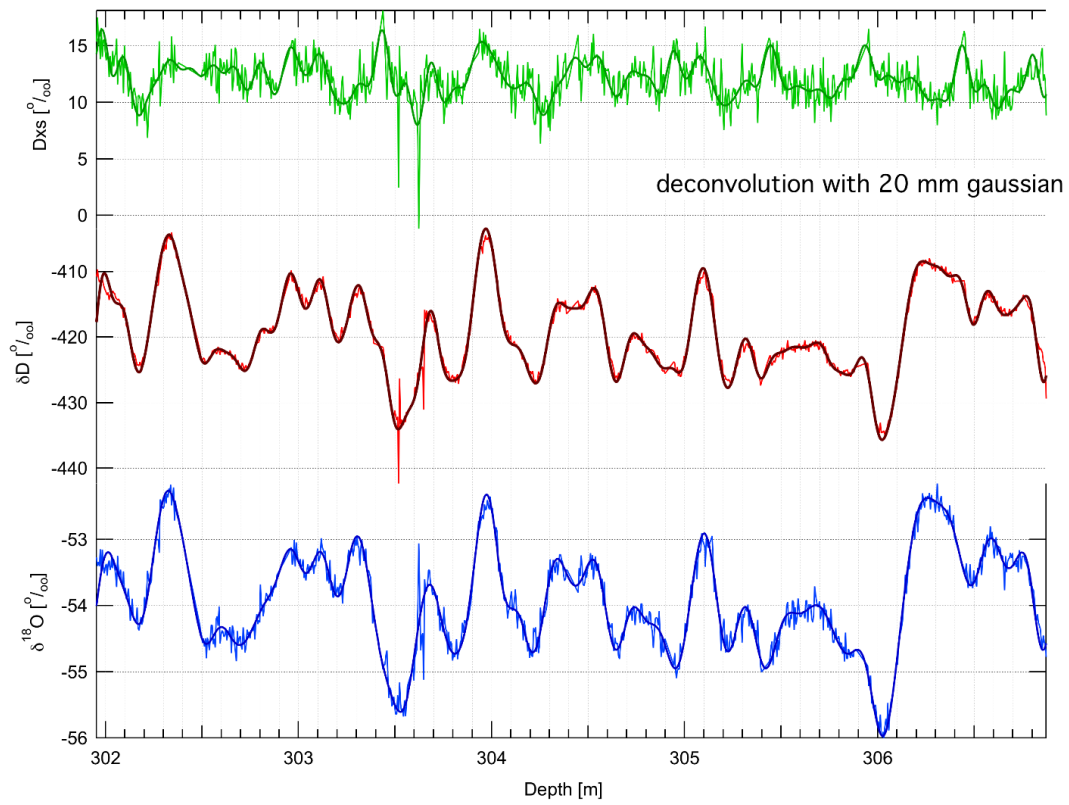


Figure S6. Continuously measured water isotopes $\delta^{18}\text{O}$ and δD as well as the derived deuterium excess (Dxs).