

Volcanic synchronization of Dome Fuji and Dome C Antarctic deep ice cores over the past 216 kyr

S. Fujita^{1,2,*}, F. Parrenin^{3,4,*}, M. Severi⁵, H. Motoyama^{1,2}, E. Wolff⁶

[1]{ National Institute of Polar Research, Research Organization of Information and Systems,
Tokyo, Japan }

[2]{ Department of Polar Science, The Graduate University for Advanced Studies
(SOKENDAI), Tokyo, Japan }

[3]{ CNRS, LGGE, F-38041 Grenoble, France }

[4]{ Univ. Grenoble Alpes, LGGE, F-38041 Grenoble, France }

[5]{ Department of Chemistry, University of Florence, Florence, Italy }

[6]{ Department of Earth Sciences, University of Cambridge, UK }

[*]{ Both authors contributed equally to the manuscript }

Correspondence to: S. Fujita (sfujita@nipr.ac.jp) and F. Parrenin (parrenin@ujf-grenoble.fr)

Abstract

Two deep ice cores, Dome Fuji (DF) and EPICA Dome C (EDC), drilled at remote dome summits in Antarctica, were synchronized to improve our understanding of their chronologies. Within the past 216 kyr, 1401 volcanic tie points have been identified. DFO2006 is the chronology for the DF core that strictly follows O₂/N₂ age constraints with interpolation using an ice flow model. AICC2012 is the chronology for five cores including the EDC core, and is characterized by glaciological approaches combining ice flow modelling with various age markers. A precise comparison between the two chronologies was performed. The age differences between them are within 2 kyr, except at Marine Isotope Stage (MIS) 5. DFO2006 gives ages older than AICC2012, with peak values of a difference of 4.5 kyr and 3.1 kyr at MIS 5d and MIS 5b, respectively. Accordingly, the ratios of duration (AICC2012/DFO2006) range between 1.4 at MIS 5e and 0.7 at MIS 5a. When making a comparison with accurately dated speleothem records, the age of DFO2006 agrees well at MIS5d, while the age of

AICC2012 agrees well at MIS5b, supporting their accuracy at these stages. In addition, we found that glaciological approaches tend to give chronologies with younger ages and with longer durations than age markers suggest at MIS 5d-6. Therefore, we hypothesize that the causes of the DFO2006/AICC2012 age differences at MIS 5 are: (i) overestimation in surface mass balance at around MIS 5d-6 in the glaciological approach and (ii) an error in one of the O₂/N₂ age constraints by ~3 kyr at MIS 5b. Overall, we improved our knowledge of the timing and duration of climatic stages at MIS 5. This new understanding will be incorporated into the production of the next common age scale. Additionally, we find that the deuterium signals at DF and EDC lead at MIS 5d-5e and at ~200 kyr BP, respectively, which should be discussed comprehensively.

1 Introduction

Ice-core records are rich archives of climate history over time scales of glacial-interglacial cycles up to ~800 kyr before present (BP) (e.g., EPICA Community Members, 2004; Kawamura et al., 2007; Petit et al., 1999). In ice core studies, dating is a central issue that must be investigated in order to better constrain the timing, sequence and duration of past climatic events and stages (e.g., Bazin et al., 2013; Kawamura et al., 2007; Parrenin et al., 2004, 2007a; Veres et al., 2013; Lemieux-Dudon et al., 2010). Good age-models are in general important in paleoclimatology, not only for Antarctic ice cores, because ice core chronologies are often cited and used in paleoclimatic studies. Recently, efforts to establish a common age scale of several Antarctic ice cores (Vostok, EPICA Dome C (EDC), EPICA Dronning Maud Land (EDML) and Talos Dome (TALDICE)) have been made (Bazin et al., 2013; Lemieux-Dudon et al., 2010; Veres et al., 2013). The latest common age scale is called the Antarctic Ice Core Chronology 2012 (AICC2012). For the past 60 kyr, the age scale was constrained by layer counting of Greenland's ice cores (see Veres et al., 2013). For ice older than 60 kyr, dating of Antarctic cores is based on various approaches combining ice flow modelling with orbital tuning age markers and other age markers. Typical orbital tuning markers include the isotopic composition of oxygen (hereinafter, $\delta^{18}\text{O}_{\text{atm}}$) from air bubbles, total air content (TAC), and the O₂/N₂ ratios of occluded air. Typical maximum age uncertainties of these markers are claimed to be ~6 kyr, ~4 kyr (Bazin et al., 2013) and ~2 kyr (Kawamura et al., 2007; Parrenin et al., 2007b; Hutterli et al., 2009), respectively, although some studies suggest that larger errors can occur in some O₂/N₂ ratio age markers (e.g.,

Hutterli et al., 2009; Landais et al., 2012). As a result, age uncertainties depend on the availability and choice of these kinds of age markers for each of the deep ice cores such as EDC (Parrenin et al., 2007a), Vostok (Parrenin et al., 2004; Suwa and Bender, 2008) and DF ice cores (Kawamura et al., 2007, Parrenin et al., 2007a). To better constrain common age scales, synchronization of deep ice cores using common events such as volcanic markers is a very important task.

Usually in ice core studies, electrical conductivity measurements are performed first because such methods are useful in quickly locating positions of volcanic events ~~in the ice cores~~. These methods include electrical conductivity measurement (ECM) (e.g., Hammer, 1980; Wolff, 2000), dielectric profile (DEP) (e.g., Moore and Paren, 1987; Wilhelms et al., 1998) and ACECM (e.g., Fujita et al., 2002c). ACECM is a method to detect the complex admittance between electrodes dragged on the ice surface with a mm-scale resolution and at 1 MHz frequency. In addition, fast ion chromatography (FIC) yields continuous records of ions including sulfate ions (Traversi et al., 2002). Although each of these electrical signals (ECM, DEP and ACECM) and signals from chemical analysis has its own characteristic, they are equally useful in locating acidic spike events in ice cores from the plateau of East Antarctica (see references given for each method above). Fallout of sulfuric acid is known to occur for one or more years following eruptions due to its residence time in the atmosphere (e.g., Gao et al., 2006; Hammer et al., 1980). Volcanic signals found in an Antarctic ice core can originate either from volcanoes located in the middle southern latitudes (e.g., South America and the South Pacific) and the high southern latitudes (the Antarctic continent and the subantarctic islands), or from volcanoes located in the low latitudes of either hemisphere (e.g., Cole-Dai et al., 2000). Additionally, a low-latitude eruption must be sufficiently explosive to inject volcanic materials directly into the stratosphere in order for its aerosols to be transported to the polar atmosphere and deposited in Antarctic snow (e.g., Cole-Dai et al., 2000). These signals of volcanic events are very useful in synchronizing ice cores. For example, the EDC core has been volcanically synchronized with other major ice cores: with the Vostok ice core by 102 tie points covering 142 kyr BP (Parrenin et al., 2012), with the EDML ice core by ~320 tie points covering 150 kyr BP (Ruth et al., 2007; Severi et al., 2007), and with the TALDICE core by ~130 tie points covering 42 kyr BP (Severi et al., 2012). These tie points are used to build a common chronology (Bazin et al., 2013; Veres et al., 2013). We note that Bazin et al. (2013) also used gas stratigraphic links in addition to ice stratigraphic links.

The DF core was drilled at the dome summit in the Dronning Maud Land in East Antarctica, located at 77 °19 'S, 39 °42 'E (Figure 1) (Watanabe et al., 1999). The elevation is 3800 m relative to the WGS84 geoid, and the ice thickness is 3028 (± 15) m (Fujita et al., 1999). The EDC core was drilled at one of the dome summits located at 75 °06 'S, 123 °21 'E, ~2000 km away from DF (Figure 1) (EPICA Community Members, 2004). The elevation of EDC is ~570 m lower than DF at 3233 m at WGS84, and the ice thickness is 3273 (± 5) m (Parrenin et al., 2007b). In the published original age scale of the DF core called DFO2006 (Kawamura et al., 2007), there are 23 O₂/N₂ age markers at an age span of between 80 kyr BP and 340 kyr BP. These O₂/N₂ constraints were interpolated by ice flow modelling. Therefore, synchronization between the DF core and the EDC core means that the chronology strictly constrained by the O₂/N₂ age markers of the DF core can be compared with AICC2012, the chronology for five cores including the EDC core, and characterized by glaciological approaches combining ice flow modelling with various age markers (Bazin et al., 2013; Veres et al., 2013). In the AICC2012 chronology, for the period of the past 216 kyr studied in this paper, ice age markers of TAC and the O₂/N₂ ratio were used from the EDC core and the Vostok core, respectively. In addition, gas age markers of $\delta^{18}\text{O}_{\text{atm}}$ have been used from the EDC, Vostok and TALDICE cores. These gas age markers were linked to the age of ice through assumptions of firn thickness and the lock-in depths of air. Note here that gas is trapped in polar ice sheets at 50–120 m below the surface, and the gas age is therefore younger than the age of the surrounding ice (ice age). Based on the DF-EDC synchronization in this paper, a precise comparison between the two age scales (DFO2006 and AICC2012) can be made, which is a major step toward improving our understanding of the chronology of Antarctic ice cores for the period over the past 216 kyr. In addition, Parrenin et al. (in review) reconstruct past changes in the ratio of surface mass balance (SMB ratio) between DF and EDC sites, based on the DF-EDC synchronization in this paper, and on corrections for the vertical thinning of layers.

2 Methods

2.1 Datasets

At each of the two sites described above, two deep ice cores have been drilled. At DF, the first core (DF1 core) was recovered during the period 1992-1998 to a depth of 2503 m

(Watanabe et al., 2003). The second 3035-m-long core (DF2 core), reaching nearly to the ice sheet bed, was drilled in the period 2004-2007 at a site ~43 m away from the DF1 borehole (Motoyama, 2007). At EDC, the first core (EDC96 core) was started in the 1996/1997 season to a depth down to 790 m. The second 3270-m-long core (EDC99 core), reaching nearly to the ice sheet bed, was started during the 1999/2000 season at a site 10 m away from the EDC96 core (EPICA Community Members, 2004). Ice core signals from these four cores were used in the synchronization work in this study. From these ice cores, we used data profiles indicative of strong acids originated from large volcanic eruptions (see Table 1). Resolutions are from 1 to 4 cm. For all these cores, depth determinations were based on the widely used method of logging of ice cores (e.g., Fujita et al., 2002a).

2.2 Method of synchronization

First, by using depth-profile graphs of the datasets described above and comparing between them, major tie points were extracted manually. Typically, we attempted to extract a tie point within at least each 5 m of depth, although this was not always possible. In glacial periods, there is often a lack of convincing tie points—presumably because of the frequent loss/disturbance of annual layers due to reworking of the snow surface by wind scouring under lower accumulation rate conditions and possible accumulation hiatuses, which remove the distinct volcanic layers. At an initial stage, ~650 tie points were extracted down to a depth of ~2180 m for both cores, using prominent peaks often common between ice core signals from different ice cores, and they often provided initial hints to recognize matching patterns of tie points. Tie points were found as patterns of appearance in ice core signals versus depth. This method of detection using pattern matching made us confident about identifying the candidate tie points. At deeper depths, there are still more tie point candidates, but they were excluded from this study because it became difficult to find candidate tie points due to the smoothing of signals by the diffusion of acid peaks (e.g., Barnes et al., 2003; Fujita et al., 2002c). Thus, we plan to perform detailed analysis of synchronization for deeper depths only in the future. Second, a semiautomatic computer-aided synchronization interface was constructed (see Figure A1 in Appendix A). Based on the initial ~650 major tie points, as many plausible minor tie point peaks as possible were extracted using the interface. A final determination was made by an operator who evaluated patterns of matching by careful observation of the shape, size and synchronicity of the candidate peaks. Using the PC interface, 1401 tie points were extracted. We note that even for cores at the same site (such as

EDC96 and EDC99, DF1 and DF2), there are variable relative depth offsets caused by borehole inclinations, cumulative small errors of ice core logging, fractures, post-coring relaxations of the core and surface snow redeposition processes such as sastrugi. Thanks to a successful synchronisation, the offsets were also extracted (data not shown) to avoid any complexity caused by the variable relative depth offsets between cores at the same dome sites. For the EDC core, we converted all depths into depths equivalent to the DEP data of the EDC99 core because these data cover the longest continuous depth span at EDC. We also converted all the DF2 depths into equivalent depths of the DF1 core. The ~~heights of the peak~~ signals were highly variable due to spatially and temporally heterogeneous depositional conditions by winds on the surface of the ice sheet (Barnes et al., 2006, Kameda et al., 2008, Wolff et al., 2005). However, synchronization was always conducted by finding patterns of peaks regardless of peak height. When the patterns of data fluctuations (locations of multiple peaks of signals in terms of relative depth) agreed between two or more sets of data at DF and EDC, they were extracted as tie points with confidence even if some of the peaks in the pattern matching were small. When we synchronized volcanically between the EDC core and the DF core, the ECM data of the Vostok ice core (Parrenin et al., 2012) were also synchronized at the same time. See the graph of Vostok ECM data in the interface in Figure A1. Between DF and Vostok, and between EDC and Vostok, we identified more than 800 tie points covering the past 140 kyr. The simultaneous nature of the synchronization work for the three deep ice cores provided an opportunity for crosschecks (triple check of the pattern among DF, EDC and Vostok), and we were able to identify tie points confidently. Assessment of the confidence associated with the 1401 tie points is given in Appendix B of this paper. In Figure 2, we provide an example of a set of extracted tie points over a depth span of approximately 20 m. In addition, in Supplementary Information A, we provide 79 sets of graphs showing all records of the synchronization covering the past 216 kyr. In this paper, the Vostok data are not developed in order to focus our discussions on the relations between the two dome sites at DF and EDC. We also note that tephra matches were not used in the synchronization work because among deep ice cores from East Antarctica (DF, EDC and Vostok), tephra layers that ~~were~~ identified from the same origins (eruptions) were rare (see Narcisi et al., 2005). In this paper, we compare several examples of the tephra matches with matches of the volcanic marker (acidic) peaks.

3 Results

3.1 Features of the tie points

The EDC-DF volcanic matching consists of 1401 depth tie points (Figure 2 and all records of synchronization in Supplementary Information A). Data are distributed heterogeneously in time ~~on a time-series graph~~ (Figure 3). In Figure 3, depths of the tie points in each ice core are plotted versus time using a single common age scale. In the present case, we tentatively use the DFO2006 scale at the bottom axis with the AICC2012 scale at the top axis as a reference. In Figure 3, the variations in the slope on the profiles are due to variable surface mass balance (SMB) ~~multiplied by~~ thinning effects after deposition. For the periods of MIS 3 and 5, a relatively large number of tie points were found, typically 10-20 points over every 1 kyr (Figure 3 bottom). The variations in the number of tie points are due to the variable number of major volcanic eruptions, variable atmospheric circulation ~~on the earth~~, variable depositional environment such as SMB, possible signal diffusion effects in ice after deposition and variable number of datasets available for the synchronization work. It became harder to find tie points in the deeper part of the cores, in particular in some cold periods such as MIS 6 (see Figure 3). This was presumably because of the frequent occurrence of periods of very low surface accumulation or accumulation hiatuses during MIS 6 and additional effects from diffusion of sulfuric acid in ice.

We note that the previous interglacial period (i.e. 120-130 kyr BP) has about twice the number of match points as the Holocene (i.e. 0-10 kyr BP). Because the availability of datasets depends on depth range (see Table 1), the number of tie points for each time span does not simply reflect the occurrence frequency of large volcanic eruptions. From the ice sheet surface to a depth close to 900 m, no dataset from DF2 core was available for synchronization. We speculate that this situation limited the number of identified tie points.

3.2 Difference between the age scales DFO2006 and AICC2012

From these 1401 tie points, we can calculate the difference in age scales of the DF core and the EDC core. The differences in age scales are given in Figure 4a. We find that for the periods of MIS 1-4, 6 and 7a, the difference ranges between 0 and -2.0 kyr. ~~Here, positive (negative) values mean that the DFO2006 chronology tends to have older (younger) ages than the AICC2012 chronology.~~ In the period of MIS 5, the difference ranges between 0 and +4.5

1 kyr. The fact that the DFO2006 chronology is older than the AICC2012 chronology at the last
2 interglacial had already been observed by Bazin et al. (2013) (see their Figure 7), and we
3 confirmed it based on precise synchronization. A remarkable feature is that the age difference
4 has peak values of +4.5 kyr and +3.1 kyr at timings of MIS 5d and MIS 5b, respectively.
5 Before MIS 5d and after MIS 5b, differences decrease from the peak values, but cover the
6 entire MIS 5 and the late stage of MIS 6 (age younger than ~150 kyr BP).

7 3.3 Difference in event durations between DFO2006 and AICC2012 age scales

8 We also investigated the difference in durations of climatic stages or events (of various time
9 scales) between DFO2006 and AICC2012. In Figure 4a, the variable slope of the red profiles
10 is related to the ratio of duration of the same climatic event on DFO2006 and AICC2012. A
11 positive (negative) slope from the past toward present means longer (shorter) durations on
12 AICC2012 compared to those on DFO2006. In Figure 4b, ratios of duration (in this paper
13 called the duration ratio) between AICC2012 and DFO2006 ages are calculated by dividing
14 durations in AICC2012 by durations in DFO2006 at each interval of the 1401 tie points. A
15 smoothed line (50-point smoothing of the raw data (dots)), shows the mean tendency. The
16 duration ratio has large fluctuations. The smallest value (0.7) and largest value (1.4) are found
17 at MIS 5a and MIS 5e, respectively. The duration ratio is relatively stable between the
18 Holocene and MIS 4 (94.2 kyr BP) with a σ (standard deviation) value of 0.08. Between MIS
19 5 and the late stage of MIS 6 (from 150 kyr BP to 94.2 kyr BP), σ is 0.18. Between 216 kyr
20 BP and 150 kyr BP, σ is 0.10. Clearly, fluctuation of the duration ratio is large between MIS 5
21 and the late stage of MIS 6.

22 In addition, the duration ratio between several discrete intervals are given in Table 3. As
23 discrete intervals, we used the two different time scales equivalent to depths of the O₂/N₂ age
24 markers of the DF core (see Figure 4b and Table 2). In intervals of the precessional cycles of
25 the O₂/N₂ age markers (9-14 kyr), the difference in durations ranges approximately within ± 3
26 kyr.

28 4 Discussions

29 We first describe what may potentially cause the age differences. After that, phasing between
30 the deuterium records is described. We also examine compatibility between several examples

of the tephra matches and the matches of the volcanic marker (acidic) peaks. The age scale for the DF core, DFO2006, is an interpolation between the O_2/N_2 age constraints using glaciological ice flow modelling (Kawamura et al., 2007). In contrast, the age scale AICC2012 is the best compromise between a background chronology (based on modelling of the SMB, snow densification into ice and ice flow) and observations (absolute ages or certain reference horizons, and stratigraphic links among several cores and orbital ages) (Bazin et al., 2013). AICC2012 is more a “glaciological chronology” than DFO2006 is because it gives more weight on the glaciological sedimentation models. Therefore, the age differences between the two chronologies are caused by both dating approaches and the complex effects from elements used in the dating approaches. To understand the age differences, we should consider: (i) errors in age constraints, (ii) SMB errors, (iii) errors in estimation of ice thinning, (iv) possible propagation of the errors through stratigraphic links, and (v) effects from differences in the dating approaches.

4.1 Examination of chronologies in terms of age markers

4.1.1 Comparison of the DFO2006/AICC2012 ages with the ages of the absolutely dated speleothem records from China

In order to examine possible causes of the DFO2006/AICC2012 age differences, DFO2006 and AICC2012 ages are compared with the ages of the absolutely dated speleothem records from China (hereinafter referred to as speleo age) (Cheng et al., 2009) based on synchronization between the EDC core record and the Chinese speleothem records (Barker et al., 2011) and on the DF-EDC volcanic synchronization. The ages of speleothems from Sanbao Cave were determined using the ^{230}Th dating technique by Cheng et al. (2009). Speleothem synchronization makes the assumption that rapid changes in speleothem $\delta^{18}\text{O}$ are synchronous with rapid changes in the temperatures in Greenland, which were in turn deduced as the inflection points in the Antarctic deuterium record. Details of the comparison are given in Figure 4d. At MIS 1-5a, 5e and 6, both chronologies (DFO2006 and AICC2012) are within 2 kyr of the speleo age. At MIS 5b, the speleo age and the AICC2012 ages agree quite well, whereas only the DFO2006 age deviates by up to 3 kyr. In contrast, at MIS 5d, the speleo age and the DFO2006 ages agree quite well, whereas only the AICC2012 age deviates by up to 4 kyr. At MIS 7a, the DFO2006 and the AICC2012 ages agree well, whereas only the speleo age deviates by up to 4 kyr. However, the features used to match the speleothem

with the EDC deuterium at this depth are ambiguous, so it is possible that the matching process at this depth is in error. In summary, based on the comparison with the ages of the absolutely dated speleothem records, we suggest as follows.

(i) Except at MIS 5b and MIS 7a, the DFO2006 chronology is supported by the absolutely dated speleothem records from China. At MIS 5b, DFO2006, one of the O_2/N_2 age markers with the ID F4 at 94.2 (± 1.4) kyr BP (on DFO2006), deviates from the speleothem ages by about 3 kyr toward the older direction. On the other hand, in the interval 0-100 kyr BP, the AICC2012 and speleothem ages agree very well. Thus, from this comparison, it is very likely that one of the O_2/N_2 age markers at 94.2 (± 1.4) kyr BP at MIS 5b is a major source of error.

(ii) Except at MIS 5d and MIS 7a, AICC2012 chronology is supported by the speleothem records. At MIS 5d, AICC2012 deviates from the speleothem ages by about 4 kyr toward the younger direction. On the other hand, at MIS 5d, the DFO2006 and speleothem ages agree very well. Thus, it is very likely that an error in AICC2012 age at MIS 5d is a major source of the DFO2006/AICC2012 age differences.

(iii) At MIS 7a, only the absolute speleothem age deviates. This may suggest that an incorrect matching between the speleothem and ice core rapid changes has been made. It is important to remember that even absolute ages will induce an error if they are applied incorrectly.

In addition, we find another feature of the DFO2006 chronology to support the belief that the 94.2 (± 1.4) kyr BP age at MIS 5b is in error. In Figure 4e, we show the thicknesses of annual layers in the ice sheet, calculated from a relation between depth and age. We find a sharp step of the annual layer thickness at 94.2 kyr BP. Such a step can appear only when ice flow modelling requires a different annual layer thickness before and after the 94.2 kyr BP age constraint. We note that annual layer thickness does not have such a step at 94.2 kyr BP on the AICC2012 chronology. We also note that we still find a few other such steps at F9 and F12. However, these steps are very small compared to the step at F4. From the step at F4, we deduce that the step will become smaller if we shift the 94.2 kyr BP age constraint toward the younger direction. This agrees with the possible 3 kyr error toward the older direction identified by comparison with the speleothem records.

Moreover, in Figure 4b, the duration ratio has a sharp step at 94.2 kyr BP, suggesting that the age constraints with the ~ 3 kyr error caused a bias to the duration ratio; before (after) the 94.2 kyr BP age constraint, the ratio is larger (smaller) because of the smaller (larger) denominator

1 in the AICC2012/DFO2006 duration ratio. Thus, the duration ratios at intervals F3-F4 and
2 F4-F5 are affected by the ~3 kyr error.

3 4 **4.1.2 Crosschecks between the DFO2006/AICC2012 chronologies and their** 5 **age markers**

6 To understand the possible error of -4 kyr (where minus means an error toward the younger
7 direction) of the AICC2012 age at around MIS 5d, we perform crosschecks between the two
8 chronologies (AICC2012 and DFO2006) and the age markers used in building these two
9 chronologies. We calculate [DFO2006 marker ages - AICC2012 age] and [DFO2006 age -
10 AICC2012 marker ages], and then we observe the results at around MIS 5d. The calculated
11 results are shown as marker symbols in Figures 4a and 5a, respectively, and also given in
12 Tables 2 and 4, respectively. Here, we examine only ice ages of the markers (such as TAC
13 markers, O₂/N₂ age markers and some other ice age markers such as ¹⁰Be, ACR-Holocene
14 transition and volcanic tephra) and ice ages of the chronology, to avoid complications of the
15 analysis introduced by gas age markers or gas age links. In Figure 4a, the data points are on
16 the red dotted line of the DFO2006/AICC2012 age difference, because DFO2006 is strictly
17 constrained by the age markers. In Figure 4a, the ID at each data point is the ID of each age
18 marker in Table 2. Error bars are 2σ-confidence intervals of the age markers (Table 2). We
19 have already discussed the most likely error of the 94.2 kyr BP marker at F4, and so we
20 exclude this marker from our discussion here. We find that the DFO2006/AICC2012 age
21 differences violate the 2σ-confidence intervals at points with IDs F5, F6 and F7. Therefore, in
22 terms of the O₂/N₂ age constraints, the AICC2012 chronology at MIS 5d is out of the
23 acceptable range.

24 In Figure 5a, the data points are not on the DFO2006/AICC2012 age difference (red dotted
25 line) because AICC2012 is a glaciological time scale. In Figure 5a, the number at each data
26 point is the ID of each age marker in Table 4. Blue symbols and green symbols are for age
27 markers from the EDC core and the Vostok core, respectively (Bazin et al., 2013). The O₂/N₂
28 age markers with IDs C9 and C10 are from the Vostok core, originally published by Suwa
29 and Bender (2008). Bazin et al. (2013) attributed 4 kyr as the 2σ-confidence intervals of these
30 O₂/N₂ age markers instead of the 2 kyr intervals originally assessed by Suwa and Bender
31 (2008). Bazin et al. (2013) used conservative values of the uncertainty because of their

questions about the phasing of the local insolation curve and O_2/N_2 curve. However, we use here the 2 kyr intervals given by the original authors. This choice is supported partly by the fact that the DFO2006 chronology agrees well with the absolutely dated speleothem records from China except at MIS 5b and MIS 7a. We find here that the DFO2006/AICC2012 age differences nearly violate the 2σ -confidence intervals of the O_2/N_2 constraints at points C9 and C10; again, in terms of the O_2/N_2 age constraints, AICC2012 chronology at MIS 5d is out of the acceptable range.

A remarkable feature in Figure 5a is that in periods of MIS 5c, 5d and 5e, the DFO2006/AICC2012 age differences (red dotted line) are systematically larger than values of [DFO2006 age - AICC2012 marker age] by 1-3 kyr. Thus, the 1-3 kyr differences are apparently not driven by the age incompatibility between the ice age markers used for establishing the two chronologies. We should examine remaining possibilities.

4.2 Possible causes of the DFO2006/AICC2012 age differences at around MIS 5d

4.2.1 Possible effects of ice thinning

One of the possibilities for the age difference at MIS 5d is errors in the estimation of vertical thinning in glaciological modelling in AICC2012. However, we find no glaciological explanation that at the two coring sites of DF and EDC, errors in the estimation of vertical thinning occur only at MIS 5d. In addition, according to the concept of conservation of mass, a thinner layer at one location can only be explained if this layer is thicker in a neighbouring location. However, no irregularity is seen in the isochronal layers observed by radio echo sounding (e.g., Fujita et al., 1999, 2012, Tabacco et al., 1998). Parrenin et al. (in review) further discuss this point. They argue that potential errors in thinning estimation are not a major cause for the DFO2006/AICC2012 age difference that we see at MIS 5d.

4.2.2 Influence by links from other cores

We consider a possibility of complex effects of the other ice core orbital markers and numerous stratigraphic links with the influence of background scenarios. Bazin et al. (2013) used numerous gas age markers of $\delta^{18}O_{atm}$ from the Vostok core and the TALDICE core for periods covering MIS 5. These numerous gas age makers are linked with the ice age of the

AICC2012 through assumptions of firn thicknesses at each site and lock-in depths. However, there is a circumstantial evidence that raises a question as to the possibility of influence by links from other cores. The previous age scale of the EDC core is known as EDC3 (Parrenin et al., 2007a). EDC3 is the glaciological chronology based on the use of a set of independent age markers, and the SMB and mechanical flow modelling. Bazin et al. (2013) showed that the timing and duration of MIS 5 in AICC2012 is basically unchanged compared to EDC3. We performed analysis of the DFO2006/EDC3 age difference in the same way as the analysis of the DFO2006/AICC2012 age difference. We found that the basic profile of the DFO2006/EDC3 age difference is similar to the DFO2006/AICC2012 age difference (purple line in Figure 5a). Again, we find a peak value of +3.6 kyr at MIS 5d. Because the EDC3 age scale is independent of any stratigraphic links to other ice cores, appearance of this peak value means that influence by links from other cores introduced to the AICC2012 gave no major effects to the observed features of the age differences. In addition, according to Bazin et al. (2013), the ice age difference between the O₂/N₂ chronology and the $\delta^{18}\text{O}_{\text{atm}}$ chronology on the Vostok ice have no anomalous bias that occur particularly at periods around MIS 5 (see Figure 4 in Bazin et al., 2013). We therefore exclude this possibility as well.

4.2.3 Influence of surface mass balance

We are interested in the remaining possibility, errors in estimating SMB at around MIS 5d in the glaciological flow modelling. To examine this possibility, we introduce a comparison between DFO2006 chronology with the glaciological chronology of the same DF core, DFGT2006 (Parrenin et al., 2007a) in Figure 5b. In building DFGT2006 chronology, as compared to DFO2006, Parrenin et al. (2007a) used a smaller number of the age markers with a larger uncertainty setting to less constrain the age by the age markers, in order to observe features of the glaciological chronology. In Figure 5b, we find that the DFO2006/DFGT2006 age difference has a peak of difference at 5d, very similar to both the variation of the DFO2006/AICC2012 age difference (Figure 4a) and that of the DFO2006/EDC3 age difference (Figure 5a). Based on this similarity, we hypothesize that the DFO2006/AICC2012 age difference at MIS 5d is most related to a difference in dating approaches, between the O₂/N₂ age-markers-based dating and the glaciological dating. We argue that the most plausible cause is the error in estimation of SMB.

The large difference between the DFO2006 and glaciological-chronologies (such as AICC2012, EDC3 and DFGT2006) at MIS 5d is explained by an overestimation of the SMB

as compared to true SMB values at each site in a period from the late stage of MIS 6 until MIS 5d in all the glaciological chronologies. If this overestimation occurs, ice around MIS 5d will have a systematic bias causing younger ages. Consequently, the duration of a period from the late stage of MIS 6 until MIS 5d will have a systematic bias causing longer intervals.

4.3 Phasing between 216-kyr-long deuterium records at Dome Fuji and Dome C

~~We describe the phasing of the climatic record of the ice cores, and we~~ preliminarily discuss phasing between the 216-kyr-long deuterium records in the DF and EDC cores. Our intention is to observe possible differences in timing in the deuterium records from the two remote dome sites in East Antarctica. Deuterium records at DF and EDC are from Uemura et al.

(2012) and Jouzel et al. (2007), respectively. In Figure 6, they are plotted against common chronologies, again tentatively DFO2006 in the bottom axis and AICC2012 in the top axis. Each of the three graphs shows an age span of 75 kyr. Looking at the phasing closely, there are stages where differences in graph shapes are apparent. A remarkable feature is that over a period of approximately 20 kyr at MIS 5d-5e, the decrease in the deuterium record at DF leads to the decrease in the deuterium record of the EDC (see Figure 6b). Another noticeable feature is that EDC signals seem to lead at ~200 kyr BP. In order to see the average phasing over the 216 kyr, the correlation coefficient of the deuterium records, shifted by x years, was calculated. The correlation coefficient had a maximum when DF leads by 60 years. We argue that the observed features above are not caused by errors in synchronization as it is very unlikely that our pattern matching caused a systematic shift in synchronization. Even if some points were mismatched within the pattern matching, such errors would be random, and they would cancel each other out in the correlation analysis. We argue that the appearance of the phase shift of 60 years is an average over changing phasing, such as relatively apparent examples at MIS 5d-5e and at ~200 kyr BP. If we assume that most of the millennial scale changes are following the bipolar seesaw pattern, then the Southern Ocean signal likely has a delay in it (WAIS Divide Project Members, 2015) compared to the northern hemisphere signal. It seems plausible that the delay is a little less in the Atlantic compared to the Indian and Pacific sectors. We therefore suggest that an average delay as small as 60 years can occur naturally. In future studies, we clearly need further exploration of the apparent phenomena at MIS 5d-5e and at ~200 kyr BP. This topic requires comprehensive discussions combining

knowledge of paleoclimatic records, climate dynamics and ice sheet dynamics, which is beyond the scope of this paper.

4.4 Comparison with stratigraphic links of visible ash layers

Using the geochemical analysis of visible ash layers in the two cores, Narcisi et al (2005) proposed stratigraphic links between DF and EDC at four depths within the past 216 kyr. This was based partly on tephra stratigraphic links between DF and Vostok that had been proposed earlier (Kohno et al., 2004). We confirm that three of the links (DF 1361.89/EDC1265.1 m, DF 1849.55/EDC 1796.3 m, DF 2170.18/EDC 2150.9 m) are consistent with the matches we have made using the pattern of volcanic marker peaks in this study, thus independently supporting the matches we have proposed at these depths. The fourth one (DF 2117.75/EDC 2086.6 m) is not consistent with our synchronisation, and we were unable to find a plausibly consistent match if we insisted on this tephra stratigraphic link. In fact, Narcisi et al (2005) specifically questioned the reality of the link at this depth between DF on the one hand and EDC and Vostok on the other, because the similarity between the geochemical signature was not as high as expected for tephtras with an identical source. Our study therefore supports this suspicion, and we suggest that the tephra at DF (2117.75 m) and EDC (2086.6 m) are of different ages. Most likely the DF-Vostok link at this depth is also incorrect. This highlights the danger of using even partly-geochemically fingerprinted stratigraphic matches of single layers in isolation, especially across the continent where it will be unusual for tephtras transported in the troposphere to be recorded simultaneously at such distant sites as EDC and DF.

5 Concluding remarks and future prospects

Based on the DF-EDC synchronization with the 1401 tie points, a precise comparison between several important age models was carried out. The models include DFO2006, AICC2012, EDC3, DFGT2006 and ages of the speleothem records from China. This comparison between various chronologies brought us new insights into the chronologies of deep ice cores as well as of the relationship between climatic records from the two sites. Important results are summarized as follows.

- (i) Two very deep ice cores in East Antarctica drilled at Dome Fuji and Dome C were precisely synchronized in terms of ice using 1401 tie points for a very long period covering the last 216 kyr.
- (ii) Now and in the future, analyses of ice core records over 216 kyr can be conducted precisely on a common age scale, either AICC2012, DFO2006 or an improved age model from both cores. Preliminary analysis for the phasing between deuterium records at DF and EDC was performed. We found that the deuterium signals at DF and EDC lead at MIS 5d-5e and at ~200 kyr BP, respectively.
- (iii) For a long period of the latest 100 kyr, the AICC2012 chronology compares well with the speleothem age, suggesting that AICC2012 is the most reliable age model for this time interval.
- (iv) At MIS 5d, 5e and 6, the DFO2006 chronology compares well with the speleothem age, suggesting that DFO2006 is reliable in this time interval.
- (v) At MIS 7a, even the ages inferred from the absolutely dated speleothem records from China may have errors as large as 4 kyr, a matter that should be further investigated. This may suggest that an incorrect matching between the speleothem and ice core rapid changes has been made.
- (vi) Duration ratio (AICC2012/DFO2006) ranges between 0.7 at MIS 5a and 1.4 at MIS 5e. Fluctuations are large at MIS 5. The fluctuation in the duration ratio is clearly caused by the complex effects of the errors in the two chronologies. Thus, we must be very careful in estimations of durations in climate modelling and flux studies where correct values of durations are very important.
- (vii) One of the O_2/N_2 age markers in the DF core at 94.2 kyr BP probably has an error of 3 kyr toward the older direction, which should be further investigated by additional ice core measurements of O_2/N_2 .
- (viii) At MIS 5d, 5e and late stage of 6, the glaciological approach of the age models are very likely to have suffered from errors in estimation of surface mass balance. The relative SMB at DF and EDC is further investigated in our companion paper by Parrenin et al. (in review) based on this DF-EDC volcanic synchronization.
- (ix) In this paper, we found that over a period of approximately 20 kyr at MIS 5d-5e, a decrease in the deuterium record at DF leads to a decrease in that of the EDC (Figure 6b). In

1 addition, in the companion paper, Parrenin et al. (in review) found that within the last glacial
2 inception (MIS 5c-5d), the past changes in the ratio of surface mass balance (SMB ratio)
3 between EDC and DF deviates by up to 20% from what is expected based on differences in
4 water stable isotope records. Clearly, we need a comprehensive discussion on this new
5 knowledge clarified based on this DF-EDC volcanic synchronization.

6 (x) The reliability of the synchronization was based on a matching of patterns. During some
7 cold periods, such a matching of patterns was impossible. For such periods, we need
8 additional information to find correlations between volcanic peak signals. In addition, this
9 lack of matching patterns may provide us with information on depositional environments in
10 the past.

11 (xi) A comparison between four proposed tephra stratigraphic links and the volcanic marker
12 peaks highlights the danger of using even partly-geochemically fingerprinted stratigraphic
13 matches of single layers in isolation.

14 Finally, the reliability of the orbital age markers such as O_2/N_2 age markers and ages of the
15 speleothem records is a key factor that influences the reliability of age models. The TAC age
16 markers are another important set of ice age markers that are free from assumptions of firn
17 thickness and the lock-in depths of air. The reliability of the O_2/N_2 age markers and the TAC
18 age markers ~~is currently under investigation~~ by many researchers (e.g., Bender, 2002; Fujita
19 et al., 2009, 2014; Hutterli et al., 2009; Kawamura et al., 2004, 2007; Landais et al., 2012;
20 Lipenkov et al., 2011; Raynaud et al., 2007; Suwa and Bender, 2008; Hörhold et al., 2012;
21 Courville et al., 2007). It is beyond the scope of this paper to delve into this, but it seems clear
22 that we need to better understand the physical processes in firn determining variations of both
23 O_2/N_2 and air content. The new stratigraphic constraint established in this study will be
24 incorporated into the next synchronized and optimized age scale of polar ice cores.

26 **Appendix A: PC interface to extract tie points**

27 Here we explain the PC interface used to search for tie points. Based on preliminary
28 tie points, a detailed search can be conducted easily. Figure A1 shows the interface window.
29 The procedures are given below. (The code of the interface is provided as a supplementary
30 material (C) in this paper.)

(i) *Preparation of data files.* Each set of ice core data (ECM, DEP, ACECM or sulfate) should have a column of its original depth, data values and tentative depth equivalent to a single reference core (DF1 core in the case of this study). Data on tentative depth equivalent to a single reference core must be collected prior to the use of the PC interface.

(ii) *Loading of data.* All the data should be loaded in the program.

(iii) *Display graphs on PC interface.* We should display a depth-dependent profile of each set of data in a PC window. As in the example shown in Figure A1, multiple windows should be aligned vertically, so that we can compare the features of each dataset easily. Importantly, for the x axis, the tentative depth equivalent to a single reference core must be used in order that user can easily examine synchronicity between multiple sets of data. In the windows, data should be scalable both in the depth (x) directions and the data value (y) directions. In addition, the x axis should be adjustable for offset of the depth scales for each core data.

(iv) *Extraction of local maxima from each set of data.* In the data profiles, the candidates for tie points should be found by extracting local maxima (dots in the centre of graphs in Figure 2). Importantly, the operator should be careful to maintain synchronization between graphs by adjusting the offset, otherwise it would be very difficult to find a matching pattern, and observing the pattern of the appearance of peaks is very important.

(v) The operator should decide whether to select a datum or not (1/0 switches in the right side of the image, in case of this study) by clicking “Record” on the right, the data—depth of peak, peak height and background level—should be recorded only for chosen data.

(vi) By shifting the depth range of windows, the operator should seek for further tie point candidates.

Appendix B: Confidence level of the tie points

We examine occurrence probability for choosing wrong tie points in the DF-EDC volcanic synchronization. As we described in the main text, our synchronization work was based on evaluation of pattern matching by careful observation of the shape, size and synchronicity of the candidate peaks. We describe here as to how accidental errors can rarely

1 happen within the pattern matching. The sequence of the 1401 tie points are distributed on a
2 smooth profile in Figure B1. The 1401 DF-EDC tie points were within time span of the past
3 216 kyr. Thus, the average time span from one tie point to another is ~154 years although the
4 tie points are distributed irregularly along time. In depth scale, as we discuss below,
5 candidates of tie points are found in most cases within 0.1 m in depth of the synchronicity. As
6 the volcanic signal frequency in our proxy records is as rare as every ~154 years (on average),
7 the probability for the accidental appearance of confusing volcanic signals within depths of
8 ~0.1 m between two cores is very slight.

9 Conditions for choosing the wrong tie points by an operator of the PC interface are
10 schematically shown in Figure B2. We assume that pattern matching is basically found. Our
11 discussion here is for each single peak within matched patterns.

12
13 (i) The volcanic signal 1 in DF core and the volcanic signal 2 in EDC core must be
14 significantly observable.

15 (ii) At the same time, the volcanic signal 1 in EDC core and the volcanic signal 2 in
16 DF core must be faint or absent, to induce misjudgement of an observer.

17 (iii) These two peaks should be within depths of ~0.1 m or so of the location expected,
18 assuming the layer thickness ratio between the adjacent volcanic match pairs remains constant.
19 Otherwise, it is highly probable that the observer will not think that a pair of peak signals is a
20 candidate of tie points.

21
22 The probability for the occurrence of these three conditions together is very small.
23 From the viewpoint of an operator of the PC interface, almost all tie points were determined
24 without ambiguity, because the operator rarely found indication of confusing candidates of
25 volcanic peaks that could be sources of errors. When we searched for possible candidates of
26 the tie points, we found each pair of candidates in most cases within 0.1 m of expected depths.
27 We note that the variances of ~0.1 m are acceptable and understandable considering the past
28 roughness of the Antarctic surface (Barnes et al., 2006). If we find a volcanic signal in one
29 core but not at the expected depth in another core, we just ignore such a single signal and
30 nothing is recorded. It is known that, due to spatial heterogeneity of deposition, a thickness of
31 one year or more deposition is sometimes completely absent in the plateau region of East

1 Antarctica (e.g., Kameda et al., 2008; Koerner, 1971). In the present condition of the
2 Holocene, the probability for the complete absence of an annual layer is greater than 8% at
3 Dome Fuji. This fact implies that under conditions of a low accumulation rate in glacial
4 periods, the probability for the complete absence of an annual layer is greater. Nevertheless,
5 we are still confident of the identified pattern of peak signals. Thus, a lone peak is not a
6 source of error as far as pattern matching is confidently observed. Figure B3 is given to show
7 that candidates of the tie points were found within narrow depth range.

8 Along the sequence of the 1401 DF-EDC tie points, the depth span between adjacent
9 tie points (Δz) is calculated for depths of both DF and EDC cores. Δz ranged from 0.02 m
10 (minimum) to ~29 m (maximum). In Figure B3, 12 XY plots, Δz at DF versus Δz at EDC,
11 made using a logarithmic scale both in X and Y are shown. Figures labelled from a to l are for
12 the age span of DFO2006 and at the Marine Isotope Stage (MIS) indicated in each figure.
13 With these figures, we can see how the depth span between adjacent tie points was almost
14 common along the DF core and along the EDC core, with only very small deviations of Δz of
15 the order of 0.1 m.

16 Overall, as mentioned in the main text, determination by an operator was made
17 confidently using the shape, size and synchronicity of the candidate peaks along the two ice
18 cores. Among them, synchronicity within each matched pattern was quite good. As a result,
19 smooth continuity of the trace in Figure B1 is also good. We therefore argue that they are
20 almost unambiguous tie points, except possible very rare cases of accidental conditions
21 indicated in Figure B2.

22 In addition, even if a few erroneous tie points are accidentally included within the
23 1401 tie points found in this work, error size in depth is of the order of ~0.1 m. Therefore,
24 there will be virtually no impact in further analysis.

26 **Acknowledgements**

27 Author contributions: The writing of this paper was led by the two first authors: S. Fujita and
28 F. Parrenin. They contributed equally and shared the responsibilities for this paper. They
29 carried out the synchronization work, led discussions and oversaw the writing of this paper. S.
30 Fujita and H. Motoyama provided the entire electrical profile data of the DF core. E. Wolff

1 and M. Severi provided the EDC electrical profile data and EDC sulfate data, respectively.
2 All authors joined in the scientific discussions.

3 We thank Kenji Kawamura, Ryu Uemura and Valérie Masson-Delmotte for helpful comments
4 on the manuscript. We wish to thank all participants in the field seasons at Dome C. The main
5 logistic support was provided by IPEV and PNRA (at Dome C). This work is a contribution to
6 the European Project for Ice Coring in Antarctica (EPICA), a joint European Science
7 Foundation/European Commission scientific program, funded by the European Union and by
8 national contributions from Belgium, Denmark, France, Germany, Italy, the Netherlands,
9 Norway, Sweden, Switzerland and the United Kingdom. This is EPICA publication nb XX.

10 We also thank all the Dome Fuji Deep Ice Core Project members who contributed to
11 obtaining the ice core samples, either through logistics, drilling or core processing. The main
12 logistics support was provided by the Japanese Antarctic Research Expedition (JARE),
13 managed by the Ministry of Education, Culture, Sports, Science and Technology (MEXT).
14 This study was supported in part by a Grant-in-Aid for Scientific Research (A) (20241007)
15 from the Japan Society for the Promotion of Science (JSPS). The manuscript was prepared
16 with the support of a National Institute of Polar Research (NIPR) publication subsidy. This
17 paper was greatly improved by thoughtful comments by five anonymous referees.

References

- Barker, S., Knorr, G., Edwards, R. L., Parrenin, F., Putnam, A. E., Skinner, L. C., Wolff, E., and Ziegler, M.: 800,000 years of abrupt climate variability, *Science*, 334, 347-351, doi:10.1126/science.1203580, 2011.
- Barnes, P. R. F., Wolff, E. W., Mader, H. M., Udisti, R., Castellano, E., and Röthlisberger, R.: Evolution of chemical peak shapes in the Dome C, Antarctica, ice core, *Journal of Geophysical Research-Atmospheres*, 108, 4126, doi:10.1029/2002jd002538, 2003.
- Barnes, P. R. F., Wolff, E. W., and Mulvaney, R.: A 44 kyr paleoroughness record of the Antarctic surface, *Journal of Geophysical Research-Atmospheres*, 111, D03102, doi:10.1029/2005jd006349, 2006.
- Bazin, L., Landais, A., Lemieux-Dudon, B., Kele, H. T. M., Veres, D., Parrenin, F., Martinerie, P., Ritz, C., Capron, E., Lipenkov, V., Loutre, M. F., Raynaud, D., Vinther, B., Svensson, A., Rasmussen, S. O., Severi, M., Blunier, T., Leuenberger, M., Fischer, H., Masson-Delmotte, V., Chappellaz, J., and Wolff, E.: An optimized multi-proxy, multi-site Antarctic ice and gas orbital chronology (AICC2012): 120-800 ka, *Clim. Past.*, 9, 1715-1731, doi:10.5194/cp-9-1715-2013, 2012.
- Bender, M. L.: Orbital tuning chronology for the vostok climate record supported by trapped gas composition, *Earth Planet. Sci. Lett.*, 204, 274-289, 2002.
- Cheng, H., Edwards, R. L., Broecker, W. S., Denton, G. H., Kong, X., Wang, Y., Zhang, R., and Wang, X.: Ice age terminations, *Science*, 326, 248-252, doi:10.1126/science.1177840, 2009.
- Cole-Dai, J. H., Mosley-Thompson, E., Wight, S. P., and Thompson, L. G.: A 4100-year record of explosive volcanism from an East Antarctica ice core, *J. Geophys. Res.*, 105, 24431-24441, doi:10.1029/2000jd900254, 2000.
- Courville, Z. R., Albert, M. R., Fahnestock, M. A., Cathles, L. M. I., and Shuman, C. A.: Impacts of an accumulation hiatus on the physical properties of firn at a low-accumulation polar site, *J. Geophys. Res.*, 112, doi:10.1029/2005JF000429, 2007.
- EPICA Community Members : Eight glacial cycles from an Antarctic ice core, *Nature*, 429, 623-628, doi:10.1038/nature02599 2004.

1 Fujita, S., Azuma, N., Fujii, Y., Kameda, T., Kamiyama, K., Motoyama, H., Narita, H., Shoji,
2 H., and Watanabe, O.: Ice core processing at Dome Fuji Station, Antarctica., *Memoirs of*
3 *National Institute of Polar Research, Special Issue*, 275-286, 2002a.

4 Fujita, S., Azuma, N., Motoyama, H., Kameda, T., Narita, H., Fujii, Y., and Watanabe, O.:
5 Electrical measurements from the 2503-m Dome F Antarctic ice core, *Ann. Glaciol.*, 35, 313-
6 320, doi:10.3189/172756402781816951, 2002b.

7 Fujita, S., Azuma, N., Motoyama, H., Kameda, T., Narita, H., Fujii, Y., and Watanabe, O.:
8 Linear and non-linear relations between HF conductivity, AC-ECM signals and ECM signals
9 of Dome F Antarctic ice core, from a laboratory experiment., *Ann. Glaciol.*, 35, 321-328,
10 2002c.

11 Fujita, S., Holmlund, P., Matsuoka, K., Enomoto, H., Fukui, K., Nakazawa, F., Sugiyama, S.,
12 and Surdyk, S.: Radar diagnosis of the subglacial conditions in Dronning Maud Land, East
13 Antarctica, *The Cryosphere*, 6, 1203-1219, doi:10.5194/tc-6-1203-2012, 2012.

14 Fujita, S., Maeno, H., Uratsuka, S., Furukawa, T., Mae, S., Fujii, Y., and Watanabe, O.:
15 Nature of radio-echo layering in the Antarctic ice sheet detected by a two-frequency
16 experiment, *J. Geophys. Res.*, 104, 13013-13024, doi:10.1029/1999JB900034, 1999.

17 Fujita, S., Okuyama, J., Hori, A., and Hondoh, T.: Metamorphism of stratified firn at Dome
18 Fuji, Antarctica: A mechanism for local insolation modulation of gas transport conditions
19 during bubble close off. , *J. Geophys. Res.*, 114, doi:10.1029/2008JF001143, 2009.

20 Fujita, S., Hirabayashi, M., Goto-Azuma, K., Dallmayr, R., Satow, K., Zheng, J., and Dahl-
21 Jensen, D.: Densification of layered firn of the ice sheet at NEEM, Greenland, *J. Glaciol.*, 60,
22 905-921, doi:10.3189/2014JoG14J006, 2014.

23 Gao, C. C., Robock, A., Self, S., Witter, J. B., Steffenson, J. P., Clausen, H. B., Siggaard-
24 Andersen, M. L., Johnsen, S., Mayewski, P. A., and Ammann, C.: The 1452 or 1453 AD
25 Kuwae eruption signal derived from multiple ice core records: Greatest volcanic sulfate event
26 of the past 700 years, *J. Geophys. Res.*, 111, D12107, doi:10.1029/2005jd006710, 2006.

27 Hörhold, M. W., Laepple, T., Freitag, J., Bigler, M., Fischer, H., and Kipfstuhl, S.: On the
28 impact of impurities on the densification of polar firn, *Earth and Planetary Science Letters*,
29 325, 93-99, doi:10.1016/j.epsl.2011.12.022, 2012.

1 Hammer, C. U.: Acidity of polar ice cores in relation to absolute dating, past volcanism, and
2 radio echoes., *J. Glaciol.*, 25, 359-372, 1980.

3 Hammer, C. U., Clausen, H. B., and Dansgaard, W.: Greenland ice sheet evidence of post-
4 glacial volcanism and its climatic impact, *Nature*, 288, 230-235, 1980.

5 Hutterli, M. A., Schneebeli, M., Freitag, J., Kipfstuhl, J., and Röthlisberger, R.: Impact of
6 local insolation on snow metamorphism and ice core records, *Teion Kagaku, Physics of Ice*
7 *Core Records II : Papers collected after the 2nd International Workshop on Physics of Ice*
8 *Core Records*, held in Sapporo, Japan, 2-6 February 2007. edited by Takeo Hondoh, 68, 223-
9 232, 2009.

10 Jouzel, J., Masson-Delmotte, V., Cattani, O., Dreyfus, G., Falourd, S., Hoffmann, G., Minster,
11 B., Nouet, J., Barnola, J. M., Chappellaz, J., Fischer, H., Gallet, J. C., Johnsen, S.,
12 Leuenberger, M., Loulergue, L., Luethi, D., Oerter, H., Parrenin, F., Raisbeck, G., Raynaud,
13 D., Schilt, A., Schwander, J., Selmo, E., Souchez, R., Spahni, R., Stauffer, B., Steffensen, J.
14 P., Stenni, B., Stocker, T. F., Tison, J. L., Werner, M., and Wolff, E. W.: Orbital and
15 millennial antarctic climate variability over the past 800,000 years, *Science*, 317, 793-796,
16 2007.

17 Kameda, T., Motoyama, H., Fujita, S., and Takahashi, S.: Temporal and spatial variability of
18 surface mass balance at Dome Fuji, East Antarctica, by the stake method from 1995 to 2006, *J.*
19 *Glaciol.*, 54, 107-116, doi:10.3189/002214308784409062, 2008.

20 Kawamura, K., Nakazawa, T., Aoki, S., Fujii, Y., Watanabe, O., and Severinghaus, J.: Close
21 resemblance between local summer insolation, O_2/N_2 and total air content from the Dome Fuji
22 ice core, Antarctica, *Eos Trans. AGU*, 85(47), Fall Meet. Suppl., Abstract C33C-0356, (2004).
23 2004.

24 Kawamura, K., Parrenin, F., Lisiecki, L., Uemura, R., Vimeux, F., Severinghaus, J. P.,
25 Hutterli, M. A., Nakazawa, T., Aoki, S., Jouzel, J., Raymo, M. E., Matsumoto, K., Nakata, H.,
26 Motoyama, H., Fujita, S., Azuma, K., Fujii, Y., and Watanabe, O.: Northern hemisphere
27 forcing of climatic cycles over the past 360,000 years implied by accurately dated Antarctic
28 ice cores, *Nature*, 448, 912-916, doi:10.1038/nature06015, 2007.

29 Koerner, R. M.: A stratigraphic method of determining the snow accumulation rate at Plateau
30 Station, Antarctica, and application to South Pole-Queen Maud Land traverse 2, 1965-1966,

1 in: Antarctic ice studies ii, edited by: Crary, A. P., American Geophysical Union, Washington
2 D.C., 225-238, 1971.

3 Kohno, M., Fujii, Y., and Hirata, T.: Chemical composition of volcanic glasses in visible
4 tephra layers found in a 2503 m deep ice core from Dome Fuji, Antarctica Ann. Glaciol., 39,
5 576-584, 2004.

6 Landais, A., Dreyfus, G., Capron, E., Pol, K., Loutre, M. F., Raynaud, D., Lipenkov, V. Y.,
7 Arnaud, L., Masson-Delmotte, V., Paillard, D., Jouzel, J., and Leuenberger, M.: Towards
8 orbital dating of the EPICA Dome C ice core using δ O₂/N₂, Clim. Past., 8, 191-203,
9 doi:10.5194/cp-8-191-2012, 2012.

10 Lemieux-Dudon, B., Blayo, E., Petit, J.-R., Waelbroeck, C., Svensson, A., Ritz, C., Barnola,
11 J.-M., Narcisi, B. M., and Parrenin, F.: Consistent dating for Antarctic and Greenland ice
12 cores, Quaternary Science Reviews, 29, 8-20, doi:10.1016/j.quascirev.2009.11.010, 2010.

13 Lipenkov, V., Raynaud, D., Loutre, M.-F., and Duval, P.: On the potential of coupling air
14 content and O₂/N₂ from trapped air for establishing an ice core chronology tuned on local
15 insolation, Quaternary Research Reviews, 30, 3280-3289,
16 doi:10.1016/j.quascirev.2011.07.013, 2011.

17 Moore, J. C., and Paren, J. G.: A new technique for dielectric logging of Antarctic ice cores, J.
18 Phys. (Paris), 48, 155-160, 1987.

19 Motoyama, H.: The second deep ice coring project at Dome Fuji, Antarctica, Scientific
20 Drilling, 5, 41-43, 10.2204/Iodp.sd.5.05.2007, 2007.

21 Narcisi, B., Petit, J. R., Delmonte, B., Basile-Doelsch, I., and Maggi, V.: Characteristics and
22 sources of tephra layers in the Epica-Dome C ice record (East Antarctica): Implications for
23 past atmospheric circulation and ice core stratigraphic correlations, Earth and Planetary
24 Science Letters, 239, 253-265, doi:10.1016/j.epsl.2005.09.005, 2005.

25 Parrenin, F., Barnola, J. M., Beer, J., Blunier, T., Castellano, E., Chappellaz, J., Dreyfus, G.,
26 Fischer, H., Fujita, S., Jouzel, J., Kawamura, K., Lemieux-Dudon, B., Loulergue, L., Masson-
27 Delmotte, V., Narcisi, B., Petit, J. R., Raisbeck, G., Raynaud, D., Ruth, U., Schwander, J.,
28 Severi, M., Spahni, R., Steffensen, J. P., Svensson, A., Udisti, R., Waelbroeck, C., and Wolff,
29 E.: The EDC3 chronology for the EPICA Dome C ice core, Clim. Past, 3, 485-497,
30 doi:10.5194/cp-3-485-2007, 2007a.

1 Parrenin, F., Dreyfus, G., Durand, G., Fujita, S., Gagliardini, O., Gillet, F., Jouzel, J.,
2 Kawamura, K., Lhomme, N., Masson-Delmotte, V., Ritz, C., Schwander, J., Shoji, H.,
3 Uemura, R., Watanabe, O., and Yoshida, N.: 1-D-ice flow modelling at EPICA Dome C and
4 Dome Fuji, East Antarctica, *Clim. Past.*, 3, 243-259, doi:10.5194/cp-3-243-2007, 2007b.

5 Parrenin, F., Petit, J. R., Masson-Delmotte, V., Wolff, E., Basile-Doelsch, I., Jouzel, J.,
6 Lipenkov, V., Rasmussen, S. O., Schwander, J., Severi, M., Udisti, R., Veres, D., and Vinther,
7 B. M.: Volcanic synchronisation between the EPICA Dome C and Vostok ice cores
8 (Antarctica) 0-145 kyr BP, *Clim. Past.*, 8, 1031-1045, doi:10.5194/cp-8-1031-2012, 2012.

9 Parrenin, F., Rémy, F., Ritz, C., Siebert, M. J., and Jouzel, J.: New modelling of the Vostok
10 ice flow line and implication for the glaciological chronology of the Vostok ice core, *Journal*
11 *of Geophysical Research: Atmospheres*, 109, D20102, doi:10.1029/2004jd004561, 2004.

12 Parrenin, F., Fujita, S., Abe-Ouchi, A., Kawamura, K., Masson-Delmotte, V., Motoyama, H.,
13 Saito, F., Severi, M., Stenni, B., Uemura, R., and Wolff, E.: Climate dependent contrast in
14 surface mass balance in East Antarctica over the past 216 kyr, *Clim. Past Discuss.*, submitted

15 Petit, J. R., Jouzel, J., Raynaud, D., Barkov, N. I., Barnola, J.-M., Basile, I., Bender, M.,
16 Chappellaz, J., Davis, M., Delaygue, G., Delmotte, M., Kotlyakov, V. M., Legrand, M.,
17 Lipenkov, V. Y., Lorius, C., Pepin, L., Ritz, C., Saltzman, E., and Stievenard, M.: Climate
18 and atmospheric history of the past 420,000 years from the Vostok ice core, Antarctica,
19 *Nature*, 399, 429-436, doi:10.1038/20859, 1999.

20 Raynaud, D., Lipenkov, V., Lemieux-Dudon, B., Duval, P., Loutre, M.-F., and Lhomme, N.:
21 The local insolation signature of air content in antarctic ice. A new step toward an absolute
22 dating of ice records. *Earth and Planetary Science Letters*, 261, 337-349,
23 doi:10.1016/j.epsl.2007.06.025, 2007.

24 Ruth, U., Barnola, J.-M., Beer, J., Bigler, M., Blunier, T., Castellano, E., Fischer, H., Fundel,
25 F., Huybrechts, P., Kaufmann, P., Kipfstuhl, S., Lambrecht, A., Morganti, A., Oerter, H.,
26 Parrenin, F., Rybak, O., Severi, M., Udisti, R., Wilhelms, F., and Wolff, E.: "EDML1": A
27 chronology for the EPICA deep ice core from Dronning Maud Land, Antarctica, over the last
28 150 000 years, *Clim. Past*, 3, 475-484, doi:10.5194/cp-3-475-2007, 2007.

29 Severi, M., Becagli, S., Castellano, E., Morganti, A., Traversi, R., Udisti, R., Ruth, U.,
30 Fischer, H., Huybrechts, P., Wolff, E., Parrenin, F., Kaufmann, P., Lambert, F., and

1 Steffensen, J. P.: Synchronisation of the EDML and EDC ice cores for the last 52 kyr by
2 volcanic signature matching, *Clim. Past*, 3, 367-374, doi:10.5194/cp-3-367-2007, 2007.

3 Severi, M., Udisti, R., Becagli, S., Stenni, B., and Traversi, R.: Volcanic synchronisation of
4 the EPICA-DC and TALDICE ice cores for the last 42 kyr BP, *Clim. Past*, 8, 509-517,
5 doi:10.5194/cp-8-509-2012, 2012.

6 Suwa, M., and Bender, M. L.: Chronology of the Vostok ice core constrained by O₂/N₂ ratios
7 of occluded air, and its implication for the Vostok climate records, *Quaternary Science*
8 *Reviews*, 27, 1093-1106, doi:10.1016/j.quascirev.2008.02.017, 2008.

9 Svensson, A., Bigler, M., Blunier, T., Clausen, H. B., Dahl-Jensen, D., Fischer, H., Fujita, S.,
10 Goto-Azuma, K., Johnsen, S. J., Kawamura, K., Kipfstuhl, S., Kohno, M., Parrenin, F., Popp,
11 T., Rasmussen, S. O., Schwander, J., Seierstad, I., Severi, M., Steffensen, J. P., Udisti, R.,
12 Uemura, R., Vallelonga, P., Vinther, B. M., Wegner, A., Wilhelms, F., and Winstrup, M.:
13 Direct linking of Greenland and Antarctic ice cores at the Toba eruption (74 ka bp), *Clim.*
14 *Past*, 9, 749-766, doi:10.5194/cp-9-749-2013, 2013.

15 Traversi, R., Becagli, S., Castellano, E., Migliori, A., Severi, M., and Udisti, R.: High-
16 resolution fast ion chromatography (FIC) measurements of chloride, nitrate and sulphate
17 along the EPICA Dome C ice core, in: *Annals of Glaciology*, vol 35, edited by: Wolff, E. W.,
18 *Annals of Glaciology-series*, 291-298, 2002.

19 Udisti, R., Becagli, S., Castellano, E., Delmonte, B., Jouzel, J., Petit, J. R., Schwander, J.,
20 Stenni, B., and Wolff, E. W.: Stratigraphic correlations between the European Project for Ice
21 Coring in Antarctica (EPICA) Dome C and Vostok ice cores showing the relative variations
22 of snow accumulation over the past 45 kyr, *J. Geophys. Res.*, 109, D08101,
23 doi:10.1029/2003jd004180, 2004.

24 Udisti, R., Becagli, S., Castellano, E., Mulvaney, R., Schwander, J., Torcini, S., and Wolff,
25 E.: Holocene electrical and chemical measurements from the EPICA-Dome C ice core, in:
26 *Annals of Glaciology*, vol 30, 2000, edited by: Hutter, K., *Annals of Glaciology*, Int
27 *Glaciological Soc*, Cambridge, 20-26, 2000.

28 Uemura, R., Masson-Delmotte, V., Jouzel, J., Landais, A., Motoyama, H., and Stenni, B.:
29 Ranges of moisture-source temperature estimated from antarctic ice cores stable isotope
30 records over glacial-interglacial cycles, *Clim. Past.*, 8, doi:1109-1125, 10.5194/cp-8-1109-
31 2012, 2012.

- 1 Veres, D., Bazin, L., Landais, A., Kele, H. T. M., Lemieux-Dudon, B., Parrenin, F.,
2 Martinerie, P., Blayo, E., Blunier, T., Capron, E., Chappellaz, J., Rasmussen, S. O., Severi,
3 M., Svensson, A., Vinther, B., and Wolff, E. W.: The Antarctic ice core chronology
4 (AICC2012): An optimized multi-parameter and multi-site dating approach for the last 120
5 thousand years, *Clim. Past.*, 9, 1733-1748, doi:10.5194/cp-9-1733-2013, 2012.
- 6 WAIS Divide Project Members (2015), Precise interpolating phasing of abrupt climate change
7 during the last ice age, *Nature*, 520(7549), 661-665, doi:10.1038/nature14401
- 8 Watanabe, O., Jouzel, J., Johnsen, S., Parrenin, F., Shoji, H., and Yoshida, N.: Homogeneous
9 climate variability across East Antarctica over the past three glacial cycles, *Nature*, 422, 509-
10 512, doi:10.1038/nature01525, 2003.
- 11 Watanabe, O., Kamiyama, K., Motoyama, H., Fujii, Y., Shoji, H., and Satow, K.: The
12 paleoclimate record in the ice core at Dome Fuji station, East Antarctica, *Ann. Glaciol.*, 29,
13 176-178, doi:10.3189/172756499781821553, 1999.
- 14 Wilhelms, F., Kipfstuhl, J., Miller, H., Heinloth, K., and Firestone, J.: Precise dielectric
15 profiling of ice cores: A new device with improved guarding and its theory, *J. Glaciol.*, 44,
16 171-174, 1998.
- 17 Wolff, E. W.: Electrical stratigraphy of polar ice cores: Principles, methods, and findings, in:
18 *Physics of ice core records*, edited by: Hondoh, T., Hokkaido University Press, Sapporo, 155-
19 171, 2000.
- 20 Wolff, E. W., Cook, E., Barnes, P. R. F., and Mulvaney, R.: Signal variability in replicate ice
21 cores, *J. Glaciol.*, 51, 462-468, doi:10.3189/172756505781829197, 2005.

22

1
2

Table 1: Summary of datasets of ice core signals used for synchronization.

Core	Name of measurement	Depth range used (m)	Measured properties	Measurement temperature (°C)	Depth resolution (cm)	Reference
DF1	ECM	2 - 2250	Direct current of solid ice	-20~-30	1	Fujita et al., 2002a, 2002b, 2002c
	AC-ECM	112 - 2250	High-frequency conductance of solid ice at 1 MHz	-20~-30	1	Fujita et al., 2002a, 2002b, 2002c
DF2	ECM	889 - 2250	Direct current of solid ice	-20	1	This study
	AC-ECM	889 - 2250	High-frequency conductance of solid ice at 1 MHz	-20	1	This study
EDC96	ECM	99 - 788	Direct current of solid ice	-20	1	EPICA Community Members, 2004
	Sulfate	7 - 788	Concentration of sulfate ions		4	Udisti et al., 2000
	DEP	7 - 788	High-frequency conductivity of solid ice at 100 kHz	-20	2	Wolff et al., 2005
EDC99	ECM	772 - 3188	Direct current of solid ice	-20	1	EPICA Community Members, 2004
	Sulfate	769 - 2094	Concentration of sulfate ions		2	Udisti et al., 2004
	DEP	7 - 3165	High-frequency conductivity of solid ice at 100 kHz	-20	2	Wolff et al., 2005

3
4

1 Table 2: Depths and AICC2012 ages of EDC core at depth/age of age markers of DF core

2

ID	Type	DF core ^{a)}			EDC core ^{b)}		Age difference
		Depth of DF1 core	Age of age marker (A)	2 σ of age marker	Synchronized depth on EDC99 core	Age on AICC2012 chronology (B)	A - B
		(m)	(yr b2k)	(yr)	(m)	(yr b2k)	(yr)
F1	ACR-Holocene	371.00	12390	200	371.46	12296	94
F2	Be10 peak	791.00	41205	500	739.35	41227	-22
F3	O ₂ /N ₂	1261.55	81973	2230	1170.17	81923	50
F4	O ₂ /N ₂	1375.69	94240	1410	1278.73	91132	3108
F5	O ₂ /N ₂	1518.87	106263	1220	1417.10	103518	2745
F6	O ₂ /N ₂	1605.26	116891	1490	1498.03	112443	4448
F7	O ₂ /N ₂	1699.14	126469	1660	1614.13	122718	3751
F8	O ₂ /N ₂	1824.78	137359	2040	1769.25	135839	1520
F9	O ₂ /N ₂	1900.68	150368	2230	1849.02	152058	-1690
F10	O ₂ /N ₂	1958.32	164412	2550	1910.13	164814	-402
F11	O ₂ /N ₂	2015.00	176353	2880	1969.00	178365	-2012
F12	O ₂ /N ₂	2052.25	186470	2770	2008.59	186471	-1
F13	O ₂ /N ₂	2103.11	197394	1370	2066.08	198399	-1005
F14	O ₂ /N ₂	2156.64	209523	1980	2131.85	209998	-475

3 a) age markers of DF core is from Kawamura et al. (2007)

4 b) AICC2012 chronology is from Bazin et al. (2013)

5

6

1 Table 3: Duration between O₂/N₂ time markers on two different time scales and their
2 differences and ratio.

ID	Age on the DF O ₂ /N ₂ time marker		Duration		Difference in duration	Duration ratio
	Start	End	on the DF O ₂ /N ₂ time marker (C)	on the AICC2012 age scale (D)	D - C	D/C
	(yr b2k)	(yr b2k)	(yr)	(yr)	(yr)	
F3-F4	81973.3	94239.8	12267	9209	-3058	0.75
F4-F5	94239.8	106263	12023	12387	363	1.03
F5-F6	106263	116891	10628	8925	-1703	0.84
F6-F7	116891	126469	9578	10275	697	1.07
F7-F8	126469	137359	10890	13121	2231	1.20
F8-F9	137359	150368	13009	16219	3210	1.25
F9-F10	150368	164412	14044	12756	-1288	0.91
F10-F11	164412	176353	11941	13551	1610	1.13
F11-F12	176353	186470	10117	8106	-2011	0.80
F12-F13	186470	197394	10924	11928	1004	1.09
F13-F14	197394	209523	12129	11599	-530	0.96

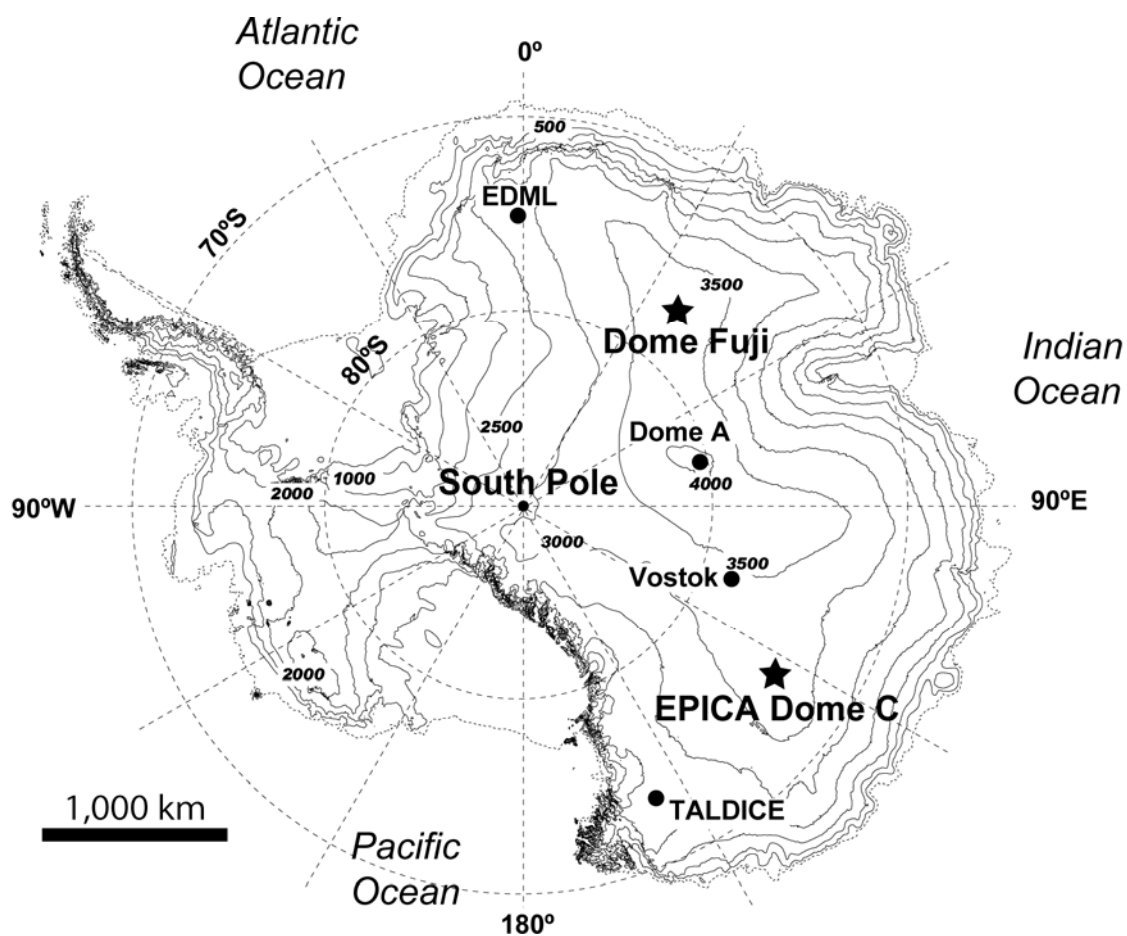
3

4

Table 4: Depths and DFO2006 ages of DF core at depth/age of age markers of AICC2012 chronology

ID	Type	Age markers used to constrain AICC2012 age scale				Age on DFO2006 chronology		Age difference
		Original core	Depth in original core	Age of age marker (E)	2 σ of time marker	Synchronized depth on DF1 core	Age on DFO2006 chronology (F)	F - E
			(m)	(yr b2k)	(yr)	(m)	(yr b2k)	(yr)
C1	Be10	Vostok	178.00	7230	100	233.27	7372	142
C2	TAC	EDC	501.65	22000	2879	514.14	20132	-1868
C3	TAC	EDC	693.67	39000	2211	738.20	36732	-2268
C4	Be10	Vostok	601.00	40700	950	781.66	39864	-836
C5	Be10	EDC	740.08	40700	950	791.81	40642	-58
C6	TAC	EDC	1255.93	87000	3082	1352.73	91495	4495
C7	Mt. Berlin tephra	EDC	1265.10	93250	4400	1361.74	92580	-670
C8	TAC	EDC	1377.67	101000	4031	1473.94	102438	1438
C9	O ₂ /N ₂	Vostok	1675.00	121850	4000	1673.08	124172	2322
C10	O ₂ /N ₂	Vostok	1853.70	132350	4000	1777.84	132221	-129
C11	TAC	EDC	1790.29	143000	6468	1843.81	140540	-2460
C12	TAC	EDC	2086.69	203000	6403	2121.00	200939	-2061

1



2

3 Figure 1: Map of the continent of Antarctica with elevation contours every 500 m. The two
 4 ice coring sites used in this study, Dome C and Dome Fuji, are marked with stars.

5

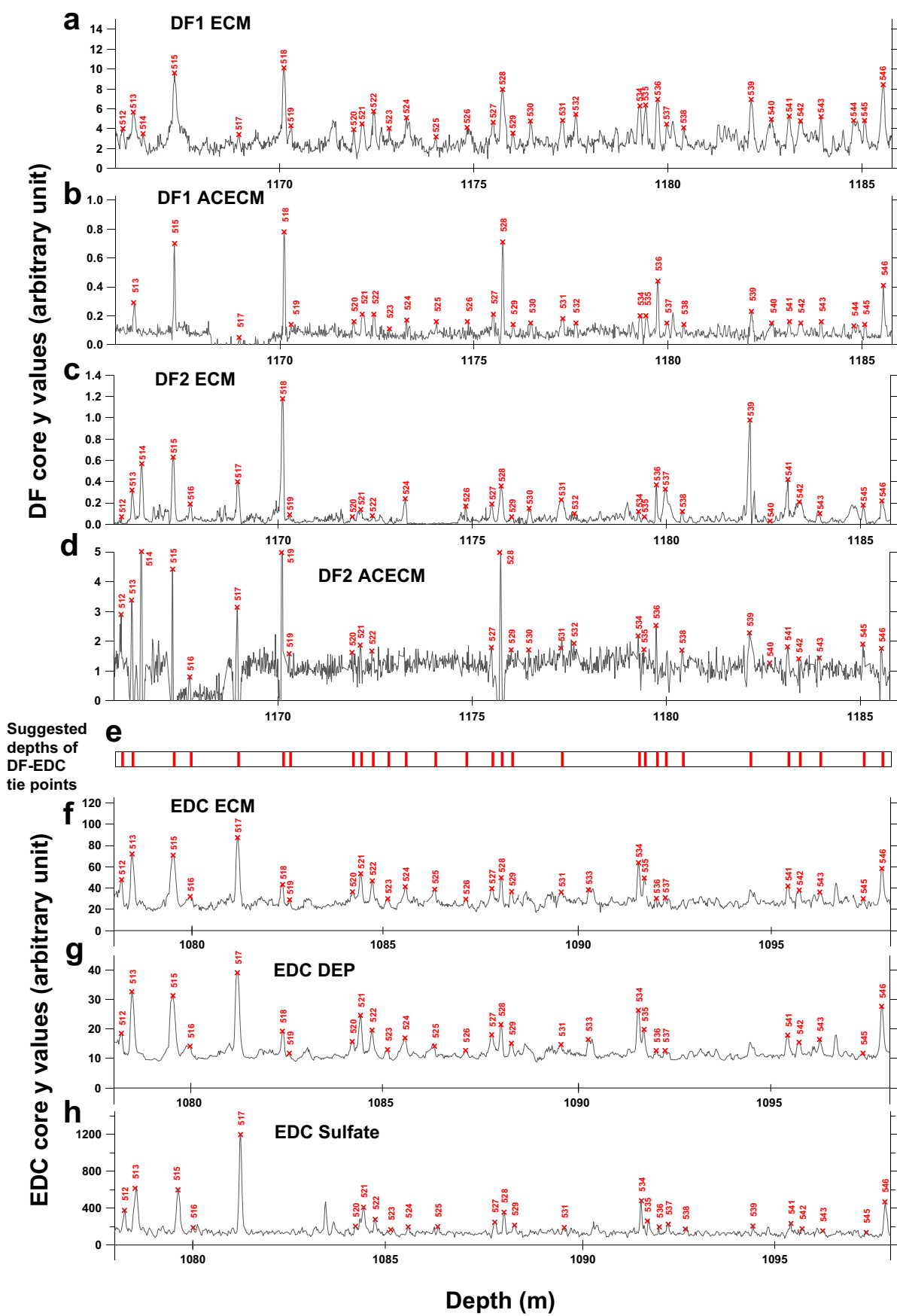


Figure 2: An example of a set of extracted tie points over a depth span of approximately 20 m in both the DF and EDC cores. Graphs from the top are: (a) DF1 ECM, (b) DF1 ACECM, (c) DF2 ECM, (d) DF2 ACECM, (e) suggested depths of tie points, (f) EDC DEP, (g) EDC ECM and (h) EDC sulfate (see Table 1). Scales of the y axes for the ECM, DEP and ACECM graphs are all arbitrary. Red markers with ID numbers (from 512 to 546) are spikes that were extracted using the PC interface (see Appendix A1). The same ID numbers in multiple graphs mean that the spikes were identified as events from the same timings, that is, from the same origins of volcanic eruptions. The ID numbers are used only for the working purpose of synchronization. This set of example contain a plausible Toba super eruption that occurred sometime at ~74 kyr BP, studied by Svensson et al. (2012). All 79 sets of examples covering 216 kyr are provided as supplementary information.

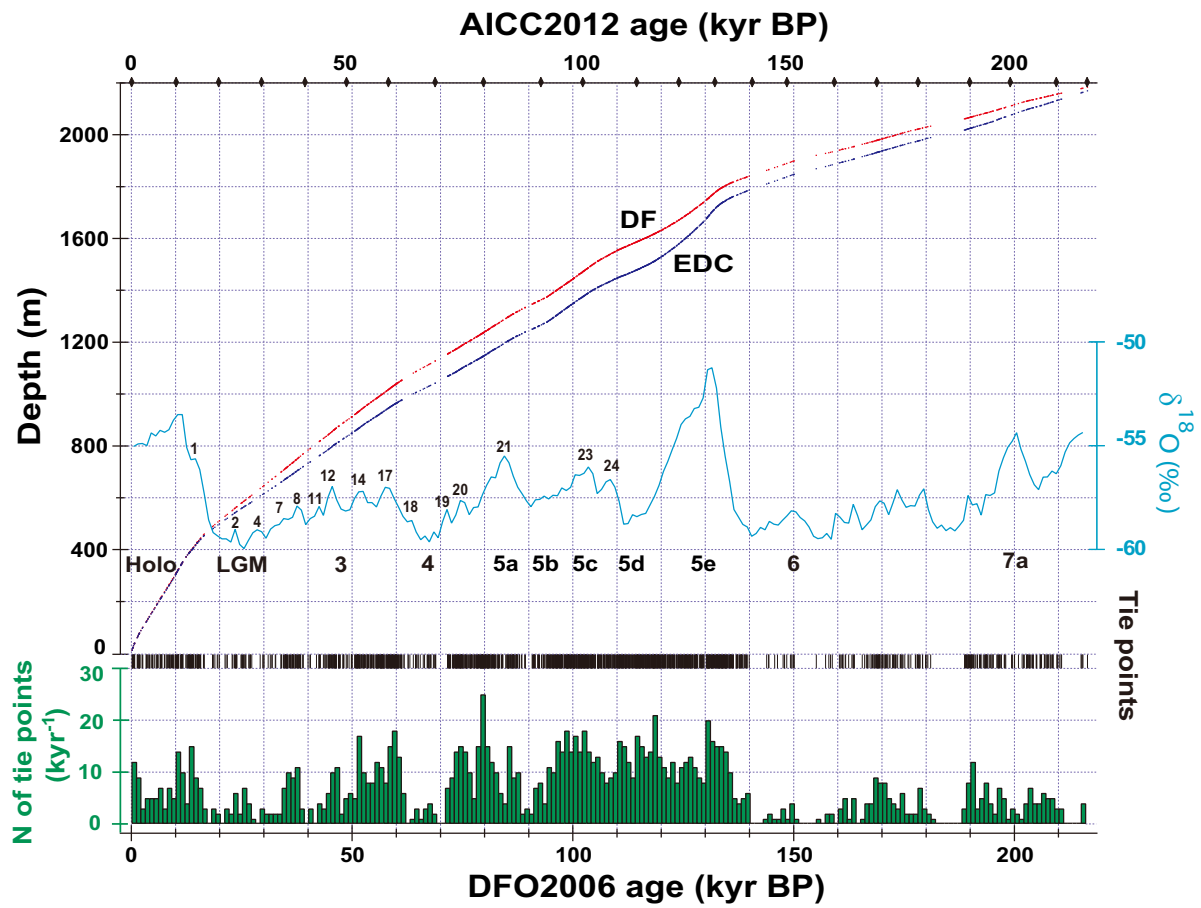


Figure 3: Result of volcanic synchronization: DF depth / EDC depth on a tentative common age scale DFO2006 (bottom axis). AICC2012 scale is also given on the top axis as a reference. Blue trace with indications of the Marine Isotope Stages and Antarctic Isotope Maxima (AIM) is $\delta^{18}\text{O}$ averaged over every 1 kyr for reference (Watanabe et al., 2003). Black vertical symbol markers are locations of the tie points on the age scale. Green histogram mean number of the tie points found over every 1 kyr.

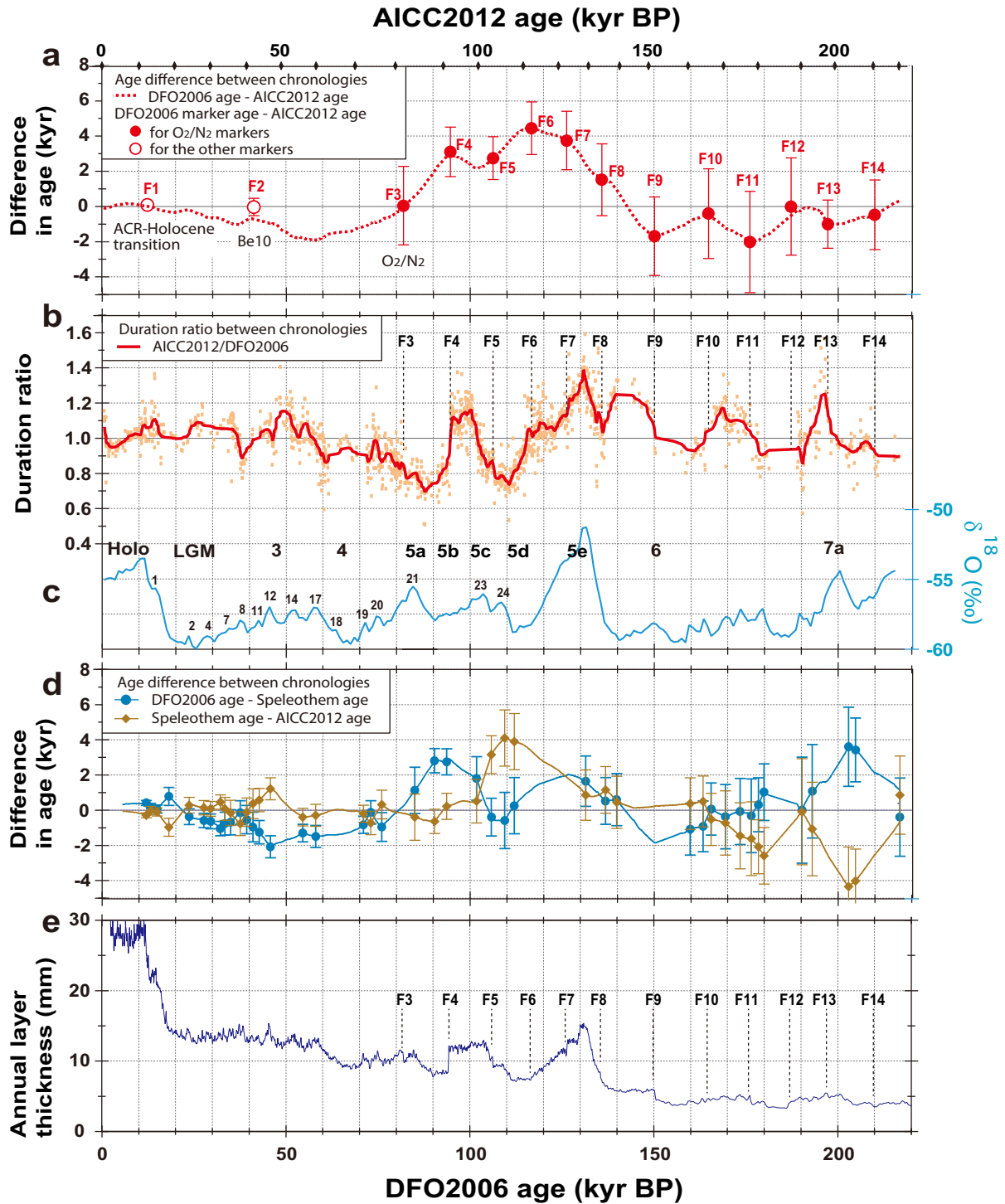


Figure 4: Some results of analyses related to a comparison between DFO2006 age and AICC2012 age plotted on a common age scale. We tentatively use the DFO2006 scale at the bottom axis with the AICC2012 scale at the top axis. For all these figures, details are given in the main text. Figure 4a: Age difference between the two chronologies [DFO2006 age -

1 AICC2012 age] (red dotted line). In addition, this age difference is compared with the age
2 difference [DFO2006 marker age - AICC2012 age]. Information of the DFO2006 marker age
3 are from Table 2. Figure 4b: Ratio of durations (duration ratio) between AICC2012 ages and
4 DFO2006 ages are calculated as duration on AICC2012 divided by duration on DFO2006 at
5 each interval of the 1401 tie points. A smoothed line with 50-point smoothing of the raw data
6 (dots) shows the mean tendency. Again, ages of the O₂/N₂ age markers (Table 3) are shown.
7 Figure 4c: Blue trace with indications of the Marine Isotope Stages (MIS) and Antarctic
8 Isotope Maxima (AIM) is $\delta^{18}\text{O}$ averaged over every 1 kyr for reference (Watanabe et al.,
9 2003). Figure 4d: DFO2006 and AICC2012 ages are compared with the ages of the Chinese
10 speleothem age (speleo age) (Cheng et al., 2009) based on a link of the EDC core record to
11 the Chinese speleothem records (Barker et al., 2011). The age differences [DFO2006 age -
12 speleo age] (blue line) and the age differences [speleo age - AICC2012 age] (yellow line) are
13 given. Solid symbol markers (both circles and diamonds) with indicated uncertainty are from
14 tie points between the EDC core record and the speleothem records (Table S1 in Barker et al.,
15 2011). Figure 4e: Thickness of annual layers in the Dome Fuji ice core was calculated on
16 DFO2006 chronology. Ages of the O₂/N₂ age markers (listed in Table 2) are shown. We can
17 observe a step in the annual layer thickness at the age marker at 94.2 kyr BP (ID: F4).

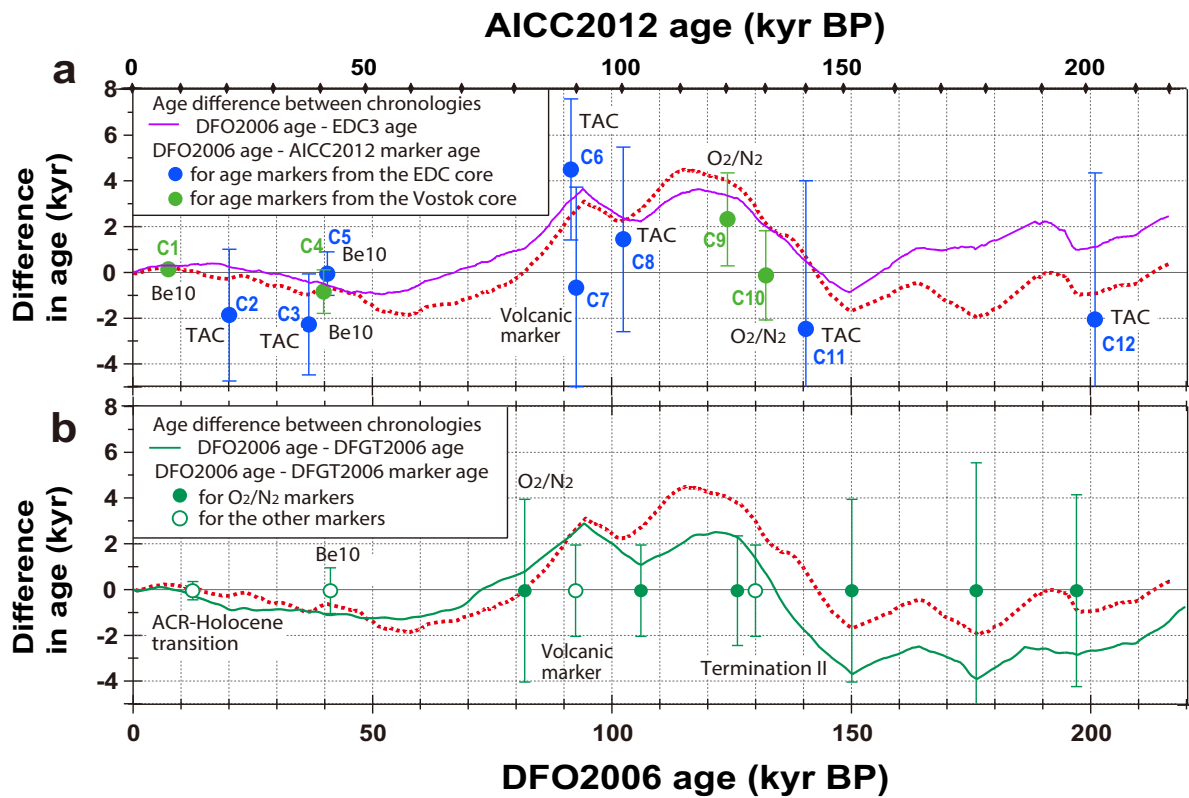


Figure 5: ~~Some results of analyses related to a~~ comparison between DFO2006 age and AICC2012 age are plotted on a common age scale. Again, as in Figure 4, we ~~tentatively~~ use the DFO2006 scale at the bottom axis with the AICC2012 scale at the top axis. Figure 5a: The age difference between the two chronologies [DFO2006 age - AICC2012 age] (red dotted line) is compared with age difference [DFO2006 age - AICC2012 marker age]. Information of the AICC2012 age markers is from Table 4. The age difference [DFO2006 age - EDC3 age] is shown as a purple line. Figure 5b: DFO2006 age as the O₂/N₂ chronology of the DF core is compared with "DFGT2006" as the glaciological chronology of the same DF core. It is shown as [DFO2006 age - DFGT2006 age] (green line in the figure). Although the age markers of the two chronologies have no age differences, DFGT2006 uses a smaller number of markers and has a larger uncertainty setting to less constrain the age by the age markers. We observe that the green line and [DFO2006 age - AICC2012 age] (red dotted line in Figure 4a) have similar variations with peak differences at MIS 5b and 5d.

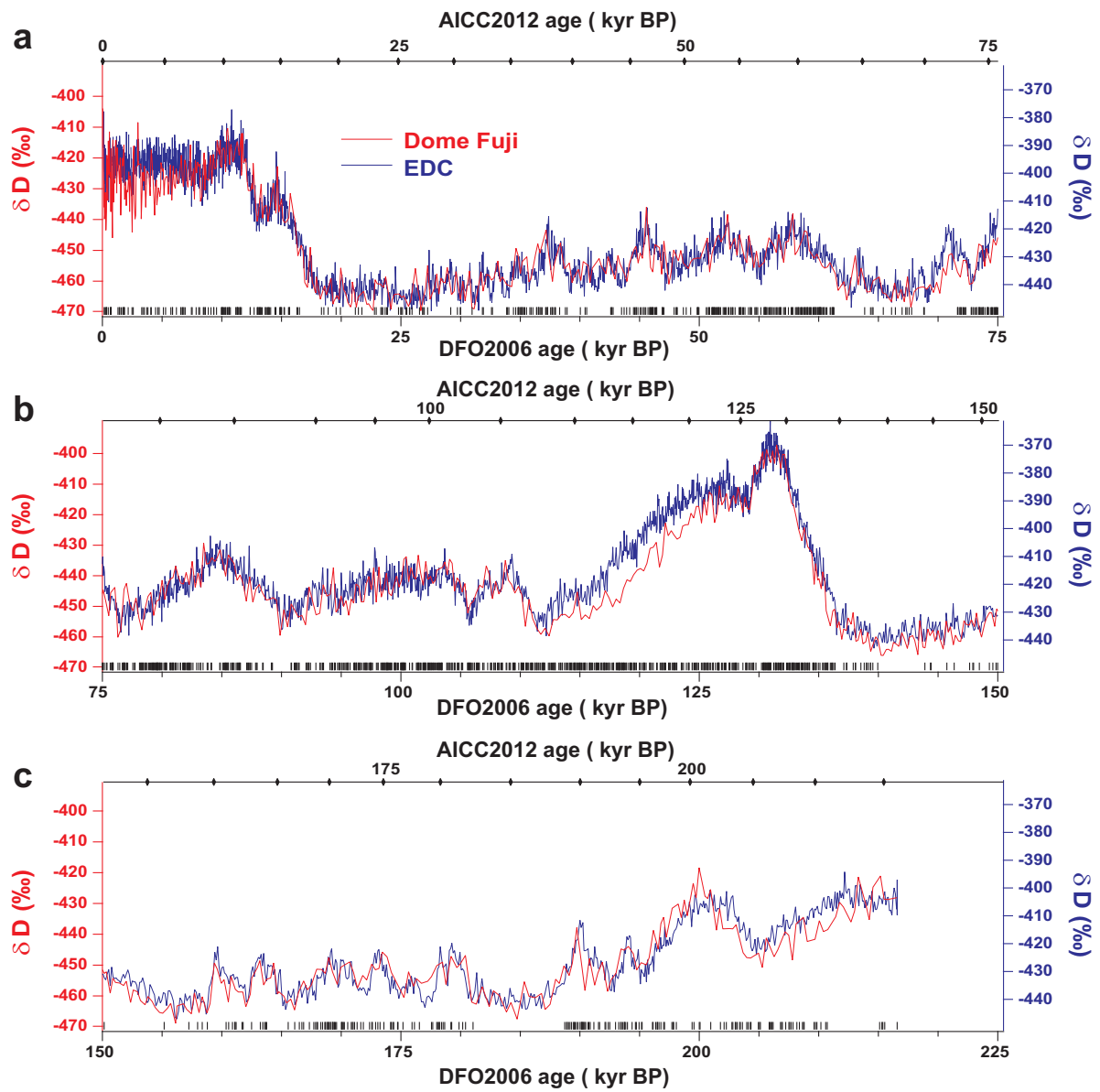


Figure 6: In order to observe phasing between deuterium records at the DF core and the EDC core, they are plotted versus common chronologies, again tentatively DFO2006 on the bottom axis and AICC2012 on the top axis. Each of the three graphs shows an age span of 75 kyr. At the bottom of each graph, the timing of the 1401 tie points is shown.

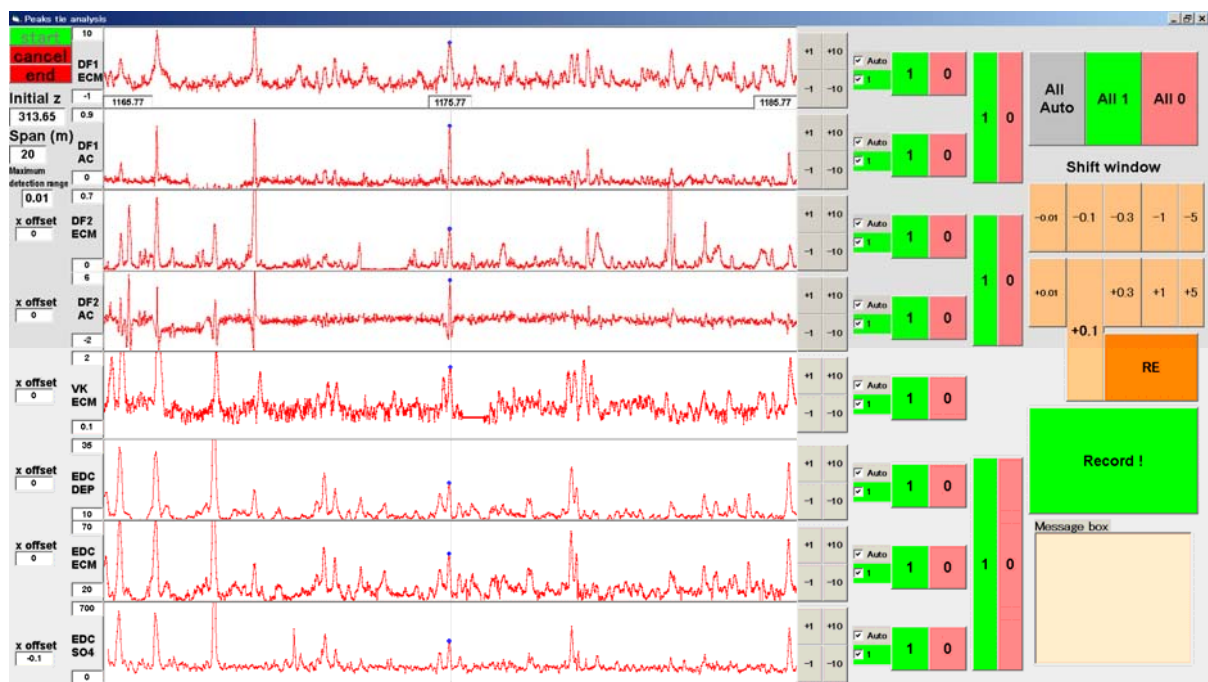
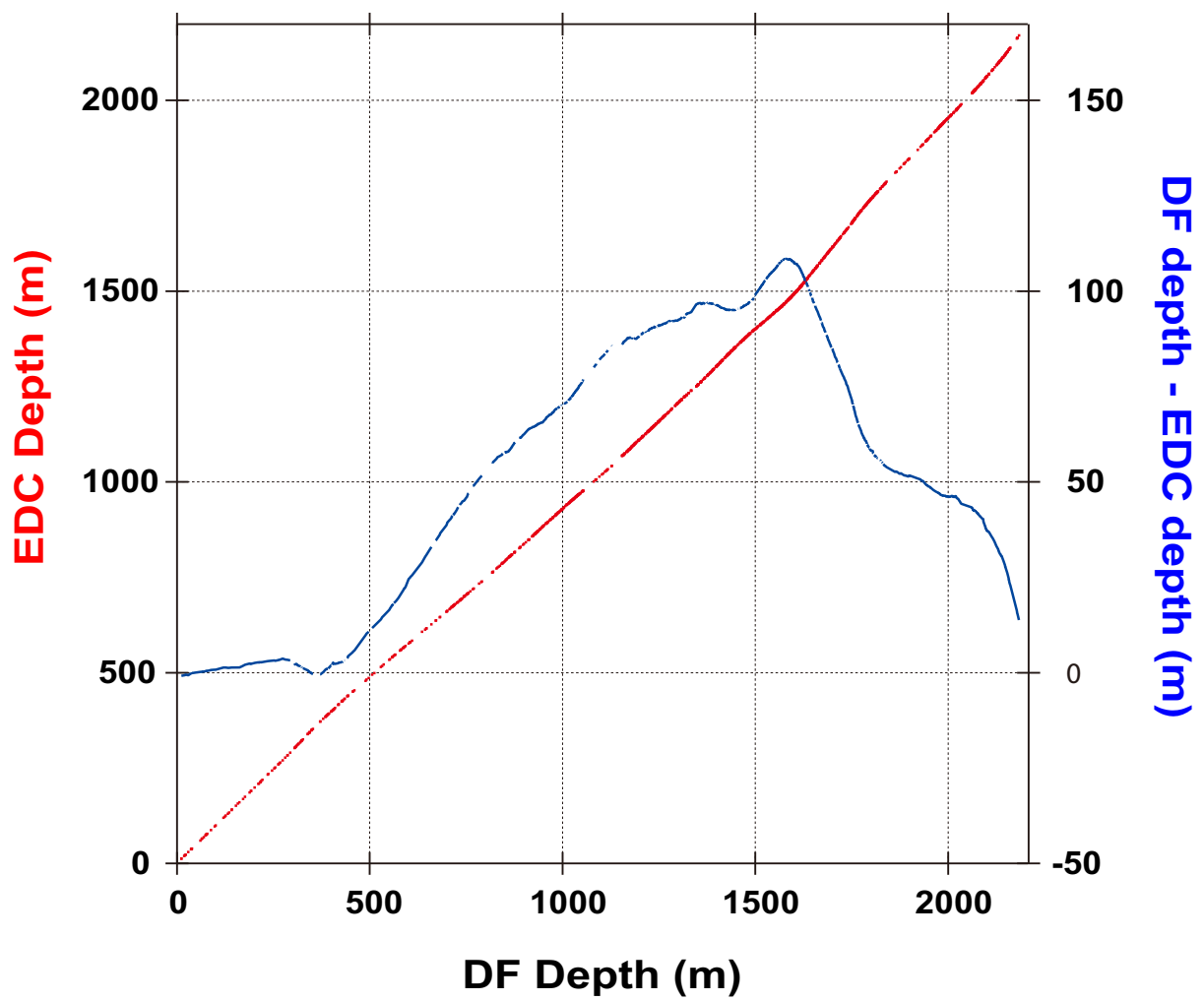


Figure A1: A PC interface window used to search for tie points semiautomatically. Based on preliminary tie points, a detailed search can be conducted easily. In the data profiles (red traces), the candidates for tie points were found by extracting local maxima (dots in the centres of graphs). After choosing each datum or not (1/0 switches in the right side of the image), by clicking "Record" on the right, the data—depth of peak, peak height and background level—are recorded. This example is the same depth window as Figure 2. The horizontal axis is a depth of approximately 20 m for both ice cores. Graphs from the top are: DF1 ECM, DF1 ACECM, DF2 ECM, DF2 ACECM, Vostok ECM, EDC DEP, EDC ECM and EDC sulfate (see Table 1).



1

2

3 Figure B1. Result of the volcanic synchronization: DF depth / EDC depth diagram (red) and
 4 DF depth - EDC depth difference (blue).

5

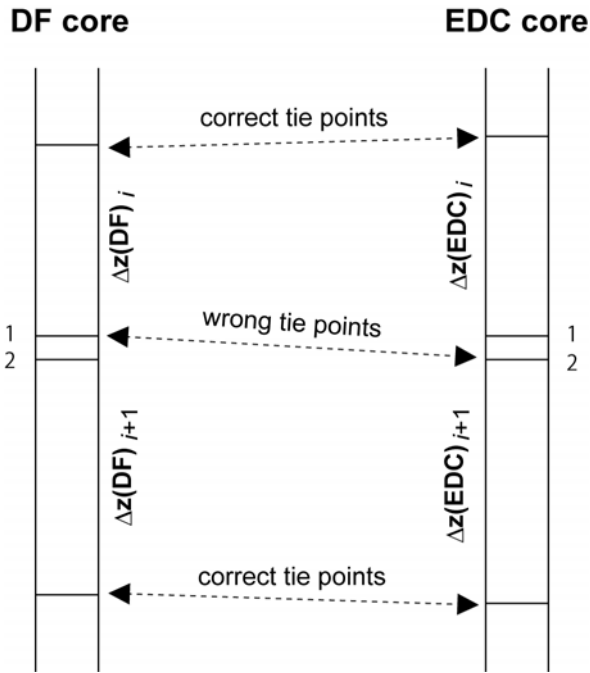


Figure B2. Schematic illustration of choosing the wrong tie points by an operator of the PC interface. The error can occur under conditions described below. (i) The volcanic signal 1 in DF core and the volcanic signal 2 in EDC core must be significantly observable. (ii) At the same time, the volcanic signal 1 in EDC core and the volcanic signal 2 in DF core must be faint or absent. (iii) These two peaks should be within depths of ~ 0.1 m or so of the location expected assuming the layer thickness ratio between the adjacent volcanic match pairs remains constant. Otherwise, the observer will not think that two peak signals are candidates of a true link.

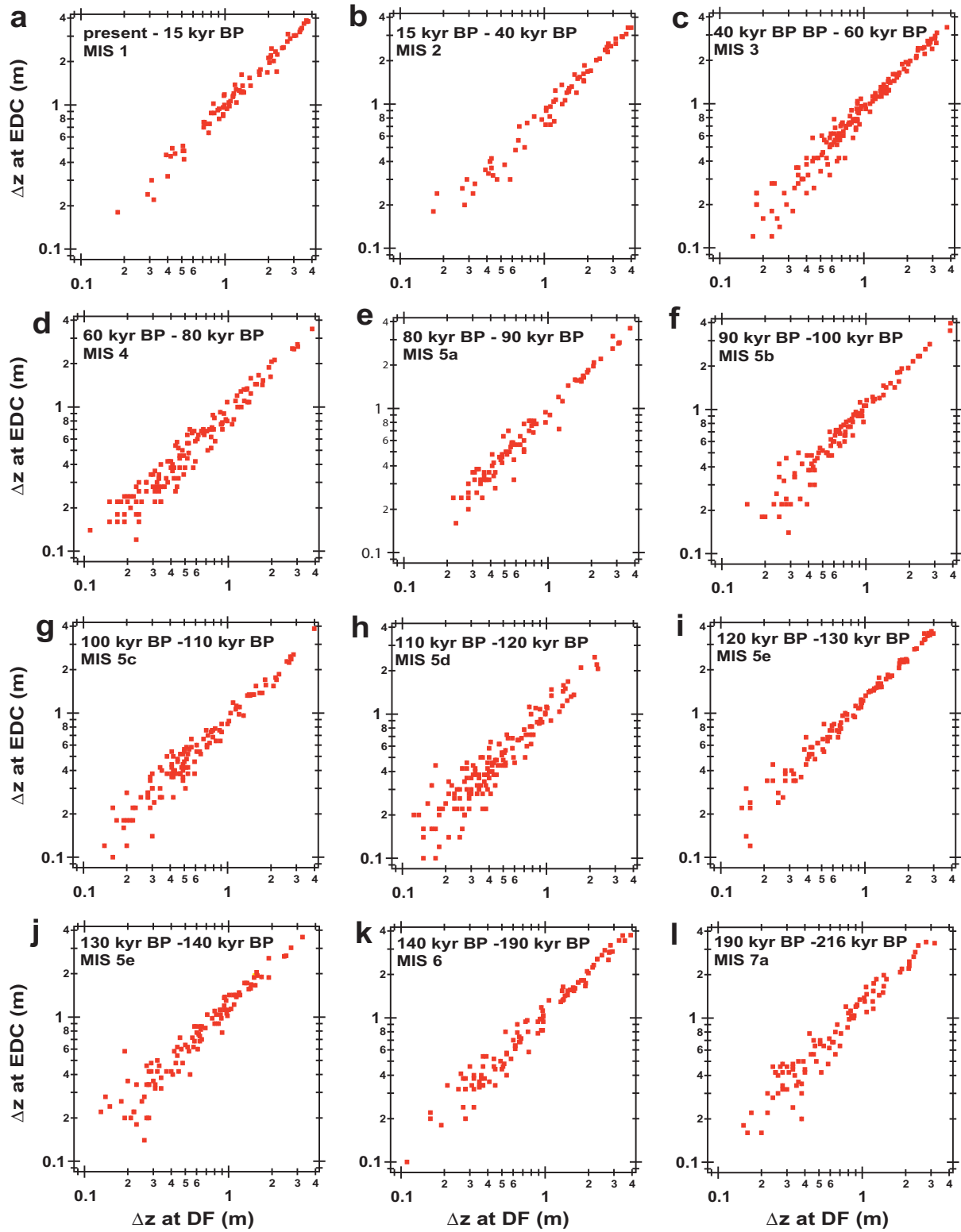


Figure B3. Along the sequence of the 1401 DF-EDC tie points, depth span between adjacent tie points were calculated for depths of both DF and EDC cores. Here, $\Delta z_i = z_{i+1} - z_i$. i is an integer from 1 to 1400. Then, XY plots were made as Δz_i at DF versus Δz_i at EDC. Figures

1 from a to l are for age span on DFO2006 and at Marine Isotope Stage (MIS) indicated in each
2 figure. With this figure, we can see to what extent depth span between adjacent tie points
3 deviated between Δz_i at DF and Δz_i at EDC. We ~~can~~ observe that they are in most cases within
4 ~0.1 m.