

**Evidence of
a prolonged drought
ca. 4200 yr BP**

J. Ruan et al.

Evidence of a prolonged drought ca. 4200 yr BP correlated with prehistoric settlement abandonment from the Gueldaman GLD1 Cave, N-Algeria

J. Ruan^{1,5}, F. Kherbouche², D. Genty¹, D. Blamart¹, H. Cheng^{3,4}, F. Dewilde¹,
S. Hachi², L. R. Edwards⁴, E. Régnier¹, and J.-L. Michelot⁵

¹Laboratoire des Sciences du Climat et de l'Environnement, Gif-sur-Yvette, France

²Centre National de Recherches Préhistoriques, Anthropologiques et Historiques, Algiers, Algeria

³Institute of Global Environmental Change, Xi'an Jiaotong University, Xi'an, China

⁴Department of Geological Sciences, University of Minnesota, Minnesota, USA

⁵Laboratoire Géosciences Paris Sud, UMR 8148, Université Paris-Sud, Orsay, France

Received: 12 June 2015 – Accepted: 15 June 2015 – Published: 03 July 2015

Correspondence to: J. Ruan (jiaoyangruan@gmail.com)

Published by Copernicus Publications on behalf of the European Geosciences Union.

Title Page

Abstract

Introduction

Conclusions

References

Tables

Figures



Back

Close

Full Screen / Esc

Printer-friendly Version

Interactive Discussion



Abstract

Middle Holocene cultures have been widely studied round the E-Mediterranean basin in the last 30 years and past cultural activities have been commonly linked with regional climate changes. However, in many cases such linkage is equivocal, in part due to existing climatic evidence that has been derived from areas outside the distribution of ancient settlements, leading to uncertainty from complex spatial heterogeneity in both climate and demography. A few high-resolution well-dated paleoclimate records were recently established using speleothems in the Central and E-Mediterranean basin, however, the scarcity of such records in the western part of the Mediterranean prevents us from correlating past climate evolutions across the basin and deciphering climate–culture relation at fine time scales.

Here we report the first decadal-resolved Mid-Holocene climate proxy records from the W-Mediterranean basin based on the stable carbon and oxygen isotopes analyses of two U/Th dated stalagmites from the Gueldaman GLD1 Cave in N-Algeria. Comparison of our records with those from Italy and Israel reveals synchronous (multi) centennial dry phases centered at ca. 5600, ca. 5200 and ca. 4200 yrBP across the Mediterranean basin. New calibrated radiocarbon dating constrains reasonably well the age of rich anthropogenic deposits (e.g., faunal remains, pottery, charcoal) excavated inside the cave, which allows the comparison between in situ evidence of human occupation and of climate change. This approach shows that the timing of a prolonged drought at ca. 4400–3800 yrBP blankets the onset of cave abandonment shortly after ca. 4403 cal yrBP, supporting the hypothesis that a climate anomaly may have played a role in this cultural disruption.

1 Introduction

As drought in NW-Africa is a recurring phenomenon and prolonged dry conditions exert a significant impact on local social systems, it becomes important to accurately docu-

CPD

11, 2729–2762, 2015

Evidence of a prolonged drought ca. 4200 yrBP

J. Ruan et al.

Title Page

Abstract

Introduction

Conclusions

References

Tables

Figures



Back

Close

Full Screen / Esc

Printer-friendly Version

Interactive Discussion



Evidence of a prolonged drought ca. 4200 yr BP

J. Ruan et al.

[Title Page](#)

[Abstract](#)

[Introduction](#)

[Conclusions](#)

[References](#)

[Tables](#)

[Figures](#)



[Back](#)

[Close](#)

[Full Screen / Esc](#)

[Printer-friendly Version](#)

[Interactive Discussion](#)



ment the role of drought conditions on the area. For instance, the most recent drought in Algeria began in 1998, as part of a widespread pattern of drying in the N-Hemisphere, and brought considerable loss in regards to water resource and agricultural yields (Horerling and Kumar, 2003). Increasingly dry sub-tropical conditions are predicted as one potential consequence of anthropogenic climate change, but current general circulation models do not completely capture the magnitude and spatial extent of observed drought conditions (Seager et al., 2007). To help understand recent climate anomalies, paleoclimate studies are crucial to characterize the range of potential natural variability in the past and to improve our understanding of the links between regional drought and large scale forcing. Instrumental data from weather stations in NW-Africa report less than one hundred years. Tree ring based drought reconstructions in Algeria and Tunisia have been extended back to the last nine centuries, which reveals large spatial heterogeneity of past climate evolutions in NW-Africa and concludes that the climate anomaly 1998–2002 appears to be the most severe in the last millennium (Touchan et al., 2008, 2011). Holocene paleoclimate studies in other regions, however, have suggested larger oscillations at centennial to millennial time scales highlighting the need for new records from this area (Mayewski et al., 2004; Wanner et al., 2008).

A significant climate excursion ca. 4200 yrBP has been widely reported and is considered as an ideal case to study the causes and effects of a large-scale climate anomaly that occurred against background conditions similar to those of today (Berkelhammer et al., 2013; Booth et al., 2005; Roland, 2012). The climatic expression of the 4200 yrBP event differs around the world. For example, it has been documented as droughts in much of mid-to-low latitudes, across Africa, Asia and N-America, wet and stormy in N-Europe and cooler in N-Atlantic (Booth et al., 2005; Roland, 2012). More recently, this climatic anomaly was characterized by extreme dry conditions on high-resolved speleothem isotope records from the Central (Drysdale et al., 2006; Zanchetta et al., 2014) and E-Mediterranean basin (Bar-Matthews and Ayalon, 2011), but, until now, such records have not available in the W-Mediterranean which prevents us the correlation of past climate anomalies across the basin.

Evidence of a prolonged drought ca. 4200 yr BP

J. Ruan et al.

Title Page

Abstract

Introduction

Conclusions

References

Tables

Figures



Back

Close

Full Screen / Esc

Printer-friendly Version

Interactive Discussion



Aside from its climatic interest, such an episode likely influenced numerous human cultures. Major societal changes have been observed across the Mediterranean basin during the Mid-Holocene, and in particular, a catastrophic desiccation ca. 4200 yr BP has been suggested to trigger the collapse of the Akkadian Empire in Mesopotamia, the Old Kingdom in Egypt and the Early Bronze Age civilizations of Greece and Crete (Weiss and Bradley, 2000; Weiss et al., 1993; Wiener, 2014). These studies have been stimulating an increasing number of debates on climate–culture relationship (e.g., Coombes and Barber, 2005). Uncertainty regarding the societal impact of such an event is still large, due in part that climatic evidence, in many cases, has been derived from regions far from the distribution of ancient settlements (e.g., Cullen et al., 2000). Although the 4200 yr BP dry event has been observed in several mid latitude sites, the database remains incomplete and conflicting observations of climatic conditions between seemingly adjacent regions exist (Magny et al., 2013; Staubwasser and Weiss, 2006). Additionally, a recent study demonstrated that the climatic impact on many agricultural settlements in ancient Near East was diverse even within spatially limited cultural units (Riehla et al., 2014).

In N-Algeria, the extinction of large mammal species (e.g., *S. antiquus*) during the Mid-Holocene was correlated with regional climate aridity, likely due to the competition with pastoralists and livestock for increasingly scarce water (Faith, 2014). Similarly, the evidence of the aridity (i.e., the termination of the African Humid Period) that provoked this extinction has been derived from the Sahara and its surroundings (deMenocal et al., 2000), which is several hundred kilometres away, leaving this assertion ambiguous and stimulating the search for new high resolution paleoclimate records in the area.

In this study, we document the Mid-Holocene climate history in the Western Mediterranean by decadal-resolved stable carbon and oxygen isotopes analyses of two U/Th dated stalagmites from the Gueldaman GLD1 Cave of N-Algeria. We compare the records with those established earlier in the Central and E-Mediterranean basin. In addition, we describe archaeological deposits layers inside the cave whose ages have

Stable isotopes

Four hundred and thirty samples were drilled every 1 to 2 mm along the stalagmite central growth axis (Fig. 2). Stable carbon and oxygen isotopes compositions of both stalagmites and modern calcites were measured using a VG-OPTIMA mass spectrometer at the LSCE. For each analysis, 60 to 80 μg calcite powder is reacted with phosphoric acid at 90 °C, and the resultant CO_2 is measured relative to a reference gas that has been calibrated against a series of isotopic standards. Duplicates were run every 10 to 20 samples to check replicability. All values are reported in ‰ relative to the V-PDB (Fig. 4). The error is 0.08 ‰ for $\delta^{18}\text{O}$ and 0.05 ‰ for $\delta^{13}\text{C}$.

2.3 Archaeological analyses

Archaeological excavations were carried out at two sectors S2 and S3 inside the Guel-daman GLD1 Cave during the 2010–2012 campaign (Fig. 1). This work consisted mainly in collecting, identifying, and referencing the archaeological materials found in stratigraphic layers (refer to Kherbouche et al. (2014) for details). More than 7000 anthropogenic remains were collected, consisting mainly of faunal remains, ceramic, and lithic and bone tools. Besides, all sediments were water screened through 1.5 and 4 mm mesh and subjected systematically to flotation with collection in a 250 μm mesh yielding a huge amount of charcoals. Initial radiocarbon dating of upper stratigraphic sequences from S2 and S3 gave the median ages ranging from ca. 6800 to 1500 calyr BP (Kherbouche et al., 2014). In order to refine the chronology of these deposits, in this study, six new charcoal samples were collected from the key archaeological layers in excavation area MN 47/48 of S2. These samples were dated using the AMS radiocarbon method at the CEA Saclay (France). Detailed procedures of the chemical preparation and the dating in the lab were referred to Cottreau et al. (2007). The dates were calibrated using the IntCal13 dataset (Reimer et al., 2013) and reported in years before 2000 AD (Table 2).

CPD

11, 2729–2762, 2015

**Evidence of
a prolonged drought
ca. 4200 yr BP**

J. Ruan et al.

Title Page

Abstract

Introduction

Conclusions

References

Tables

Figures



Back

Close

Full Screen / Esc

Printer-friendly Version

Interactive Discussion



3 Results

3.1 Stalagmites U/Th dates and growth rates

The uranium contents of measured stalagmites samples are relatively high ranging from 95 to 225 ppb (Table 1). The 2 sigma U/Th errors vary from 20 to 210 years with an average of 77 years (1.6%). The U/Th date (5070 ± 194 yrBP) of sample GLD1-stm4-47 was detected as a major outlier by the StalAge program, thus, it was not used to calculate the final age model. Calculated StalAge age model for stalagmite GLD1-stm4 shows large errors up to 500 years during ca. 4900–4200 yrBP (Fig. 3). Based on individual StalAge age model, stalagmite GLD1-stm2 grew continuously from ca. 6200 to 4100 yrBP, whereas stalagmite GLD1-stm4 grew continuously from ca. 5800 to 3200 yrBP (Fig. 3).

Stalagmite GLD1-stm2 shows high and variable growth rates (mean = $180 \mu\text{m yr}^{-1}$) with higher values $\sim 400 \mu\text{m yr}^{-1}$ at ca. 4800–4500 yrBP; whereas stalagmite GLD1-stm4 shows relatively lower and less variable growth rates (mean = $120 \mu\text{m yr}^{-1}$) with higher values $\sim 200 \mu\text{m yr}^{-1}$ at ca. 3800–3200 yrBP (Fig. 4).

3.2 Stable carbon and oxygen isotopes

The isotopic compositions of modern calcite vary from -5.40 to -5.56 ‰ for the $\delta^{18}\text{O}$ and from -8.43 to -10.34 ‰ for the $\delta^{13}\text{C}$. The $\delta^{18}\text{O}$ values from stalagmites GLD1-stm2 and GLD1-stm4 range from -7.8 to -2.8 ‰ and from -7.3 to -0.6 ‰, respectively; the $\delta^{13}\text{C}$ values range from -10.6 to -3.3 ‰ and from -11.9 to -0.6 ‰, respectively. The $\delta^{18}\text{O}$ and $\delta^{13}\text{C}$ significantly correlate in both stalagmites: $R = 0.87$, $P < 0.01$ for GLD1-stm2 and $R = 0.92$, $P < 0.01$ for GLD1-stm4. Albeit the different amplitudes, the isotopic profiles of the two stalagmites show similarities during their common development of ca. 5800–4100 yrBP: relatively elevated isotope values are found at ca. 5700–5400, ca. 5200, and ca. 4500 yrBP (Fig. 4). Two other isotopically enriched periods in stalagmite GLD-stm2 are found at ca. 6200 and ca. 4900 yrBP (Fig. 4). There

CPD

11, 2729–2762, 2015

Evidence of
a prolonged drought
ca. 4200 yrBP

J. Ruan et al.

Title Page

Abstract

Introduction

Conclusions

References

Tables

Figures



Back

Close

Full Screen / Esc

Printer-friendly Version

Interactive Discussion



**Evidence of
a prolonged drought
ca. 4200 yr BP**

J. Ruan et al.

[Title Page](#)[Abstract](#)[Introduction](#)[Conclusions](#)[References](#)[Tables](#)[Figures](#)[Back](#)[Close](#)[Full Screen / Esc](#)[Printer-friendly Version](#)[Interactive Discussion](#)

is a common isotopic enrichment trend since ca. 4800–4600 yrBP (depending on individual age model; abrupt in stalagmite GLD1-stm4 whereas more gradual in GLD1-stm2). Toward the end of this trend, the most prominent anomaly occurs in stalagmite GLD1-stm4 at ca. 4400–3800 yrBP during which the $\delta^{18}\text{O}$ values are enriched by approximately 3.5‰ relative to the background values of that time as well as the modern calcite values for a period of ~ 500 years (Fig. 4). Specifically within this anomalous period, there is a mild depletion of $\delta^{18}\text{O}$ at ca. 4200–4000 yrBP, followed by a second enrichment toward its end during which stalagmite GLD1-stm2 stops growing (Fig. 4). The last stage, ca. 3800–3200 yrBP, of GLD1-stm4, is characterized by a $\delta^{18}\text{O}$ recovery of about -3‰ , synchronous with increased growth rates (Fig. 4).

3.3 Anthropogenic deposits and ^{14}C dates

Excavations inside Gueldaman GLD1 Cave revealed a large variety of archeological remains and, among them, are numerous precious macro charcoals that have been used for establishing the chronology of the deposits. In the $\sim 7\text{ m}^2$ total excavated area of S2, more than 7000 archaeological objects were identified and consisted of faunal remains, lithic artifacts and grinding equipment, potteries, bone tools, ornaments, and ochre. In addition, a fragment of a human mandible and two isolated teeth were found during the excavation 2010–2012 in Gueldaman GLD1 Cave (Kherbouche et al., 2014). These deposits belong mainly to the Neolithic; only the top level of the sequence contains potsherds of the historic period. In the lower Neolithic levels, identified domestic species (i.e. sheep and goats) represented $\sim 25\%$ of total faunal assemblages ($N = 2378$) suggesting a partly pastoral based economy. The potteries ($N = 825$) are mostly related to cooking vessels of 25–40 cm rim diameter. Hundreds of black charcoals ($> 1\text{ cm}$) were found and always associated with ceramic concentrations suggesting evidence of cooking activities.

Determined radiocarbon dates give the median ages of the sequence between 7002 and 1482 cal yrBP, with their 2σ -error intervals varying from 132 to 374 years (Table 2). These dates provide a first chronology for the archaeological deposits excavated from

**Evidence of
a prolonged drought
ca. 4200 yr BP**

J. Ruan et al.

[Title Page](#)[Abstract](#)[Introduction](#)[Conclusions](#)[References](#)[Tables](#)[Figures](#)[Back](#)[Close](#)[Full Screen / Esc](#)[Printer-friendly Version](#)[Interactive Discussion](#)

Under isotopic equilibrium precipitation, stalagmite calcite $\delta^{18}\text{O}$ depends mainly on the temperature of calcite-water fractionation and on the $\delta^{18}\text{O}$ of drip water that is controlled by local rainfall $\delta^{18}\text{O}$ (Genty et al., 2014). Observations from the IAEA network show that the rainfall $\delta^{18}\text{O}$ at many Mediterranean stations (including one in Algiers, Algeria) are partly controlled by the amount of rainfall (IAEA, 2005), which is coherent with previous studies that most stalagmite $\delta^{18}\text{O}$ records from the Mediterranean regions were interpreted to primarily reflect changes in rainfall amount (e.g., Bar-Matthews and Ayalon, 2011; Bar-Matthews et al., 1997, 2003; Drysdale et al., 2004, 2006; Zanchetta et al., 2014). The temperature effect on calcite-water fractionation, on the other hand, is partly counteracted by the condensation temperature effect on rainfall $\delta^{18}\text{O}$ (Drysdale et al., 2006). We note that this interpretation may particularly hold true for the present study because the regional temperature seems to have been relatively constant since the Mid-Holocene (Martrat et al., 2004).

The rainfall signal imprinted in the Gueldaman GLD1 stalagmite $\delta^{18}\text{O}$ is probably enhanced by two other processes - evaporation and disequilibrium isotopic fractionation (Mickler, 2006), partly due to the large cave entrance. It has been recently shown that evaporation in semiarid caves could cause 4–5% $\delta^{18}\text{O}$ enrichments of a wide range of drip waters (Cuthbert et al., 2014). The Hendy test (i.e. studying the isotopic variation in contemporaneous layer, Hendy, 1971) made on three different levels in stalagmite GLD1-stm2 show that the $\delta^{18}\text{O}$ and $\delta^{13}\text{C}$ correlate ($R = 0.86, 0.89,$ and 0.93) and increase by up to $\sim 1\%$ from the center toward the edge, suggesting that stalagmite calcites precipitate out of isotopic equilibrium. These two processes may partly explain the significant correlation of $\delta^{18}\text{O}$ and $\delta^{13}\text{C}$ profiles ($R = 0.87$ for GLD-stm2 and $R = 0.92$ for GLD1-stm4). Moreover, the larger amplitudes of isotopic variations in stalagmite GLD1-stm4 (Fig. 4) can be explained by the likelihood of suffering from more evaporative and non-equilibrium enrichments due to lower drip rates, being indicated by its smaller diameters (Fig. 2).

Stalagmite $\delta^{13}\text{C}$ variations have several potential causes, the most likely, considering the studied location and time interval, being variations in soil CO_2 input and water

Evidence of a prolonged drought ca. 4200 yr BP

J. Ruan et al.

Title Page

Abstract

Introduction

Conclusions

References

Tables

Figures



Back

Close

Full Screen / Esc

Printer-friendly Version

Interactive Discussion



flow rate (Genty et al., 2001; McDermott, 2004). Despite the fact that soil biogenic CO₂ production varies according to both temperature and moisture level, moisture is likely to be a major controlling factor due to low temperature variability of the considered time interval and limited water availability under semiarid climates. Moisture also influences water flow rate and thus the CO₂ loss during the prior calcite precipitation (Fairchild et al., 2000). Low flow rate under diminished moisture condition enhances CO₂ loss due to longer travel time and preferential ¹²C removing from solution, causing enrichments in stalagmite δ¹³C (Johnson et al., 2006; Mickler, 2004). Eventually, atmospheric rainfall largely determines the moisture level and controls the δ¹³C variations. Therefore, the significant correlation between δ¹³C and δ¹⁸O suggest not only a disequilibrium fractionation but a common control of rainfall.

Consequently, synchronous variations in two isotopes can be interpreted in terms of water balance change: a prolonged severe drought can be inferred using the most elevated δ¹⁸O and δ¹³C values during ca. 4400–3800 yr BP together with drier events at ca. 6200, ca. 5700–5400, ca. 5200, and ca. 4500 yr BP (Fig. 4). The average δ¹⁸O value during ca. 4400–3800 yr BP is enriched by about 3.5‰ relative to the modern calcite values, suggesting that the climatic conditions were likely drier during the Mid-Holocene than at present. Thus, the current climate in N-Algeria appears to be within the range of natural variability and the 4400–3800 yr BP climate anomaly may be considered analogous to end numbers of the most recent and ongoing drying.

4.2 Mid-Holocene climate anomalies across the Mediterranean basin and their dynamic implications

High-resolution absolute-dated Mid-Holocene climate records are rare in the W-Mediterranean basin, however, there are a number of paleoenvironment studies using sediment cores that documented large oscillations in vegetation ecology and indicated climate anomalies during the Mid-Holocene. A drying trend from ca. 4600 cal yr BP onwards was inferred, based on the decreasing pollen ratio of deciduous broad-leaf vs. evergreen sclerophyllous taxa at Capestang in the Mediterranean S-France (Jalut et al.,

**Evidence of
a prolonged drought
ca. 4200 yr BP**

J. Ruan et al.

[Title Page](#)[Abstract](#)[Introduction](#)[Conclusions](#)[References](#)[Tables](#)[Figures](#)[Back](#)[Close](#)[Full Screen / Esc](#)[Printer-friendly Version](#)[Interactive Discussion](#)

2000). At a nearby site in NE-Spain, the Mid-Holocene most arid condition at ca. 4800–4000 calyrBP was interpreted using maximum salinity values, more positive organic carbon isotope values, and decreased algal productivity in Estanya Lake (Morrellon et al., 2009). In the Mediterranean S-Spain, desertification phases at ca. 5200 calyrBP and ca. 4100 calyrBP were inferred using multiple palaeoecological indicators including pollen, microcharcoal, spores of terrestrial plants, fungi, non-siliceous algae, and other microfossils in Siles Lake (Carrión, 2002). Similar environment changes have also been observed in the Central Mediterranean basin, as shown by a synthesis study of lacustrine palynological data which suggested a dryness peaking at ca. 4000 calyrBP (Sadori et al., 2011). Increasing aridity at ca. 5000–4000 calyrBP was suggested to explain the increases in non-tree pollen percentage and micro charcoal content in the Lago di Pergusa Lake, Sicily (Roberts et al., 2011; Sadori and Giardini, 2007; Sadori and Narcisi, 2001). Close to our site, a study at Preola Lake, in E-Sicily, documented a significant low stand lake level at ca. 4500–4000 calyrBP suggesting extreme aridity (Magny et al., 2011). Although the sampling and dating resolutions in most of the above studies are low, they are in good agreement with the present study regarding the 5200 yrBP dry event, the drying trend from 4800–4600 yrBP onward, and the 4400–3800 yrBP drought.

Recently, evidence of detailed Mid-Holocene climate change has been shown in high-resolution U/Th-dated speleothem records from the Central and E-Mediterranean basin. Drysdale et al. (2006) demonstrated a severe Mid-Holocene drought through multiproxy analysis on a flow stone from Renella Cave, Central Italy. The following work at nearby Corchia Cave by Zanchetta et al. (2007) revealed similar climatic condition during the Mid-Holocene (Fig. 5). In the E-Mediterranean, Bar-Matthews and Ayalon (2011) explicitly discussed the Mid-Holocene climate by high-resolution dating and isotopic analysis on speleothems from Soreq Cave in Israel (Fig. 5). Zanchetta et al. (2014) made comparisons between records from the Central and E-Mediterranean; they identified coeval dry events at ca. 5600 and ca. 5200 yrBP based on comparable enrichments in speleothem $\delta^{18}\text{O}$ from Corchia Cave and Soreq Cave.

Evidence of a prolonged drought ca. 4200 yr BP

J. Ruan et al.

Title Page

Abstract

Introduction

Conclusions

References

Tables

Figures



Back

Close

Full Screen / Esc

Printer-friendly Version

Interactive Discussion



bones seen in this period imply that the cave might have been occasionally visited until its re-occupation at ca. 1484 calyrBP (Fig. 7). These observations argue for links between climate and settlement activity especially during the 4200 yrBP climate anomaly. Water availability was likely crucial to maintain the Neolithic community at Gueldaman, N-Algeria and the prolonged severe drought ca. 4400–3800 yrBP might have played a role in triggering the settlement abandonment, indicating that the pastoral economy may not be as resistant, as commonly assumed, to climate anomaly in semiarid area.

Moreover, the sole piece of the bone from large ungulate (supposed to be elephant or rhinoceros) found at the depth of ~ 110 cm (Kherbouche et al., 2014) was anchored by two calibrated ^{14}C dates from present study between 6003 and 4913 calyrBP, which is in line with the latest survival of large mammal species (*S. antiquus*, *E. Mauritanicus*, and *E. melkiensis*) at the proximate sites of N-Algeria during the Mid-Holocene (Faith, 2014 and references wherein). The extinction of the Mid-Holocene large mammal in N-Algeria was attributed to the competition with pastoralists and livestock for increasingly scarce water, corresponding with an abrupt climatic shift toward extreme aridity in the Sahara region ca. 5500 calyrBP (i.e. the end of the Humid Africa Period, deMenocal et al., 2000; Faith, 2014). Recently, the timing of this climatic transition was refined to ca. 4900 yrBP \pm 200 yr (McGee et al., 2013). In addition, a paleoenvironmental study in the Sahara revealed that the Mid-Holocene deteriorations of terrestrial ecosystem and climate culminated at ca. 4200–3900 calyrBP (e.g., Kröpelin et al., 2006). Therefore, it is more likely based on evidence from the Gueldaman GLD1 Cave and the proximate sites (Faith, 2014) that extinction of large mammal/ungulate in N-Algeria occurred during the prolonged drought ca. 4400–3800 yrBP.

5 Conclusions

It is increasingly clear based on a growing number of records spanning across much of mid-to-low latitudes, N-Europe, and the Atlantic ocean that there was a significant large scale climate anomaly at around 4200 yrBP (Booth et al., 2005). The 4200 yrBP

Evidence of a prolonged drought ca. 4200 yr BP

J. Ruan et al.

Title Page

Abstract

Introduction

Conclusions

References

Tables

Figures



Back

Close

Full Screen / Esc

Printer-friendly Version

Interactive Discussion



aridity that had been suggested to affect the Early Bronze Age populations from the Aegean to ancient Near East was recently characterized by high-resolution speleothem records from the Central and E-Mediterranean basin (Bar-Matthews and Ayalon, 2011; Drysdale et al., 2006; Zanchetta et al., 2014). The new record presented here from the Gueldaman GLD1 Cave in N-Algeria provides increased evidence of a prolonged severe drought ca. 4400–3800 yr BP, which suggests that the Mid-Holocene dryness spread to the W-Mediterranean of N-Africa.

Radiocarbon dating made on charcoals constrains reasonably well the age of archaeological deposits excavated inside the cave (Kherbouche et al., 2014) and reveals significant changes in human occupation during the last ca. 7000 years. Comparison of the stalagmite record with in situ archaeological sequence suggests synchronicity between climate and settlement activity. Relatively wet/dry periods coincide with the periods of more/less intensive human occupation. Particularly, the timing of the prolonged drought at ca. 4400–3800 yr BP blanket the onset of the cave abandonment event shortly after ca. 4403 cal yr BP, which argues a possible role of climate anomaly in this societal disruption. Further work on pollen-based reconstruction of vegetation/environment change from the excavation sequence and on refinement of the chronology of transitions between different occupation phases would potentially uncover the intrinsic relations among climate, environment and settlement. It is suggested that the methodology and the findings from the present study at the Gueldaman GLD1 Cave be applied and tested at other sites.

Acknowledgements. Radiocarbon dating were analysed by Jean-Pierre Dumoulin at ARTEMIS (LMC14, Saclay). We thank Edwige Pons-Branchu, Monique Pierre for the U/Th dating of the base part of stalagmite GLD1-stm2 during the earlier stage of this study. We also thank Lijuan Sha at the Xi'an Jiaotong University for assistance with the U/Th dating. Thanks to Cecilia Garrec for editing assistance. Funding is provided by the CNRS INSU program PALEOMEX-ISOMEX, the NSFC grant 41230524 and the CSC scholarship.

References

- Bar-Matthews, M. and Ayalon, A.: Mid-Holocene climate variations revealed by high-resolution speleothem records from Soreq Cave, Israel and their correlation with cultural changes, *Holocene*, 21, 163–171, 2011.
- 5 Bar-Matthews, M., Ayalon, A., and Kaufman, A.: Late Quaternary paleoclimate in the eastern Mediterranean region from stable isotope analysis of speleothems at Soreq Cave, Israel, *Quaternary Res.*, 47, 155–168, 1997.
- Bar-Matthews, M., Ayalon, A., Gilmour, M., Matthews, A., and Hawkesworth, C. J.: Sea–land oxygen isotopic relationships from planktonic foraminifera and speleothems in the Eastern Mediterranean region and their implication for paleorainfall during interglacial intervals, *Geochim. Cosmochim. Ac.*, 67, 3181–3199, 2003.
- 10 Berkelhammer, M., Sinha, A., Stott, L., Cheng, H., Pausata, F. S. R., and Yoshimura, K.: An abrupt shift in the Indian Monsoon 4000 years ago, in: *Climates, Landscapes, and Civilizations*, edited by: Giosan, L., Fuller, D. Q., Nicoll, K., Flad, R. K., and Clift, P. D., American Geophysical Union, Washington, DC, 75–87, 2013.
- 15 Bond, G., Kromer, B., Beer, J., Muscheler, R., Evans, M. N., Showers, W., Hoffmann, S., Lotti-Bond, R., Hajdas, I., and Bonani, G.: Persistent solar influence on north Atlantic climate during the Holocene, *Science*, 294, 2130–2136, 2001.
- Booth, R. K., Jackson, S. T., Forman, S. L., Kutzbach, J. E., Bettis, E. A., Kreig, J., and Wright, D. K.: A severe centennial-scale drought in midcontinental North America 4200 years ago and apparent global linkages, *Holocene*, 15, 321–328, 2005.
- 20 Carrión, J. S.: Patterns and processes of Late Quaternary environmental change in a montane region of southwestern Europe, *Quaternary Sci. Rev.*, 21, 2047–2066, 2002.
- Cheng, H., Edwards, L. R., Shen, C. C., Polyak, V. J., Asmerom, Y., Woodhead, J., Hellstrom, J., Wang, Y., Kong, X., Spötl, C., Wang, X., and Alexander Jr., E. C.: Improvements in ^{230}Th dating, ^{230}Th and ^{234}U half-life values, and U-Th isotopic measurements by multi-collector inductively coupled plasma mass spectrometry, *Earth Planet. Sc. Lett.*, 371–372, 82–91, 2013.
- 25 Coombes, P. and Barber, K.: Environmental determinism in Holocene research: causality or coincidence?, *Area*, 37, 303–311, 2005.
- 30

Evidence of a prolonged drought ca. 4200 yr BP

J. Ruan et al.

Title Page

Abstract

Introduction

Conclusions

References

Tables

Figures



Back

Close

Full Screen / Esc

Printer-friendly Version

Interactive Discussion



Evidence of a prolonged drought ca. 4200 yr BP

J. Ruan et al.

[Title Page](#)

[Abstract](#)

[Introduction](#)

[Conclusions](#)

[References](#)

[Tables](#)

[Figures](#)



[Back](#)

[Close](#)

[Full Screen / Esc](#)

[Printer-friendly Version](#)

[Interactive Discussion](#)



- Cottreau, E., Arnold, M., Moreau, C., Baque, D., Bavay, D., Caffy, I., Comby, C., Dumoulin, J.-P., Hain, S., Perron, M., Salomon, J., and Setti, V.: Artemis, the new ^{14}C AMS14 in Saclay, France, *Radiocarbon*, 49, 291–299, 2007.
- 5 Cullen, H. M., deMenocal, P. B., Hemming, S., Hemming, G., Brown, F. H., Guilderson, T., and Sirocko, F.: Climate change and the collapse of the Akkadian empire: evidence from the deep sea, *Geology*, 28, 379–382, 2000.
- Cuthbert, M. O., Baker, A., Jex, C. N., Graham, P. W., Treble, P. C., Andersen, M. S., and Acworth, R. I.: Drip water isotopes in semi-arid karst: implications for speleothem paleoclimatology, *Earth Planet. Sc. Lett.*, 395, 194–204, 2014.
- 10 deMenocal, P., Ortiz, J., Guilderson, T., Adkins, J., Sarnthein, M., Baker, L., and Yarusinsky, M.: Abrupt onset and termination of the African Humid Period: rapid climate responses to gradual insolation forcing, *Quaternary Sci. Rev.*, 19, 347–361, 2000.
- Drysdale, R., Zanchetta, G., Hellstrom, J., Maas, R., Fallick, A., Pickett, M., Cartwright, I., and Piccini, L.: Late Holocene drought responsible for the collapse of Old World civilizations is recorded in an Italian cave flowstone, *Geology*, 34, 101–104, 2006.
- 15 Drysdale, R. N., Zanchetta, G., Hellstrom, J. C., Fallick, A. E., Zhao, J.-X., Isola, I., and Bruschi, G.: Palaeoclimatic implications of the growth history and stable isotope ($\delta^{18}\text{O}$ and $\delta^{13}\text{C}$) geochemistry of a Middle to Late Pleistocene stalagmite from central-western Italy, *Earth Planet. Sc. Lett.*, 227, 215–229, 2004.
- 20 Edwards, R. L., Chen, J. H., and Wasserburg, G. J.: ^{238}U - ^{234}U - ^{230}Th - ^{232}Th systematics and the precise measurements of time over the past 500 000 years, *Earth Planet. Sc. Lett.*, 81, 175–192, 1987.
- Fairchild, I. J. and Baker, A.: *Speleothem Science – from Process to Past Environments*, John Wiley & Sons, Ltd, Chichester, UK, 2012.
- 25 Fairchild, I. J., Borsato, A., Tooth, A. F., Frisia, S., Hawkesworth, C. J., Huang, Y. M., McDermott, F., and Spiro, B.: Controls on trace element (Sr–Mg) compositions of carbonate cave waters: implications for speleothem climatic records, *Chem. Geol.*, 166, 255–269, 2000.
- Faith, J. T.: Late Pleistocene and Holocene mammal extinctions on continental Africa, *Earth-Sci. Rev.*, 128, 105–121, 2014.
- 30 Genty, D., Baker, A., Massault, M., Proctor, C., Gilmour, M., and Pons-Branchu, E.: Dead carbon in stalagmites: carbonate bedrock paleodissolution vs. ageing of soil organic matter. Implications for ^{13}C variations in speleothems, *Geochim. Cosmochim. Ac.*, 65, 3443–3457, 2001.

**Evidence of
a prolonged drought
ca. 4200 yr BP**

J. Ruan et al.

[Title Page](#)[Abstract](#)[Introduction](#)[Conclusions](#)[References](#)[Tables](#)[Figures](#)[Back](#)[Close](#)[Full Screen / Esc](#)[Printer-friendly Version](#)[Interactive Discussion](#)

Genty, D., Labuhn, I., Hoffmann, G., Danis, P. A., Mestre, O., Bourges, F., Wainer, K., Mas-sault, M., Régnier, E., Orengo, P., Falourd, S., and Minster, B.: Rainfall and cave water iso-topic relationships in two South-France sites, *Geochim. Cosmochim. Ac.*, 131, 323–343, 2014.

5 Hendy, C. H.: The isotopic geochemistry of speleothems – I. The calculation of the effects of dif-ferent modes of formation on the isotopic composition of speleothems and their applicability as palaeoclimatic indicators, *Geochim. Cosmochim. Ac.*, 35, 801–824, 1971.

Hoerling, M. and Kumar, A.: The perfect ocean for drought, *Science*, 299, 691–694, 2003.

IAEA: Isotopic Composition of Precipitation in the Mediterranean Basin in Relation to Air Cir-culation Patterns and Climate: Final Report of a Coordinated Research Project, 2000–2004, International Atomic Energy Agency, Vienna, Austria, 2005.

Jackson, M. G., Oskarsson, N., Tronnes, R. G., McManus, J. F., Oppo, D. W., Gronvold, K., Hart, S. R., and Sachs, J. P.: Holocene loess deposition in Iceland: evidence for millennial-scale atmosphre-ocean coupling in the North Atlantic, *Geology*, 33, 509–512, 2005.

15 Jaffey, A. H., Flynn, K. F., Glendenin, L. E., Bentley, W. C., and Essling, A. M.: Precision mea-surement of half-lives and specific activities of ^{235}U and ^{238}U , *Phys. Rev. C*, 4, 1889–1906, 1971.

Jalut, G., Esteban Amat, A., Bonnet, L., Gauquelin, T., and Fontugne, M.: Holocene climatic changes in the Western Mediterranean, from south-east France to south-east Spain, *Palaeogeogr. Palaeocl.*, 160, 255–290, 2000.

20 Johnson, K. R., Hu, C. Y., Belshaw, N. S., and Henderson, G. M.: Seasonal trace-element and stable-isotope variations in a Chinese speleothem: the potential for high-resolution pa-leomonsoon reconstruction, *Earth Planet. Sc. Lett.*, 244, 394–407, 2006.

Kaufman, A., Wasserburg, G. J., Porcelli, D., Bar-Matthews, M., Ayalon, A., and Halicz, L.: U-Th isotope systematics from the Soreq cave, Israel and climatic correlations, *Earth Planet. Sc. Lett.*, 156, 141–155, 1998.

Kherbouche, F., Hachi, S., Abdessadok, S., Sehil, N., Merzoug, S., Sari, L., Benchernine, R., Chelli, R., Fontugne, M., Barbaza, M., and Roubet, C.: Preliminary results from excavations at Gueldaman Cave GLD1 (Akbou, Algeria), *Quatern. Int.*, 320, 109–124, 2014.

30 Kröpelin, S., Verschuren, D., Lézine, A.-M., Eggermont, H., Cocquyt, C., Francus, P., Cazet, J.-P., Fagot, M., Rumes, B., Russell, J. M., Darius, F., Conley, D. J., Schuster, M., Su-chodoletz, H. v., and Engstrom, D. R.: Climate-driven ecosystem succession in the Sahara: the past 6000 years, *Science*, 320, 765–768, 2006.

Evidence of a prolonged drought ca. 4200 yr BP

J. Ruan et al.

Title Page

Abstract

Introduction

Conclusions

References

Tables

Figures



Back

Close

Full Screen / Esc

Printer-friendly Version

Interactive Discussion



Magny, M., Vanni re, B., Calo, C., Millet, L., Leroux, A., Peyron, O., Zanchetta, G., La Mantia, T., and Tinner, W.: Holocene hydrological changes in south-western Mediterranean as recorded by lake-level fluctuations at Lago Preola, a coastal lake in southern Sicily, Italy, *Quaternary Sci. Rev.*, 30, 2459–2475, 2011.

5 Magny, M., Combourieu-Nebout, N., de Beaulieu, J. L., Bout-Roumazeilles, V., Colombaroli, D., Desprat, S., Francke, A., Joannin, S., Ortu, E., Peyron, O., Revel, M., Sadori, L., Siani, G., Sicre, M. A., Samartin, S., Simonneau, A., Tinner, W., Vanni re, B., Wagner, B., Zanchetta, G., Anselmetti, F., Brugiapaglia, E., Chapron, E., Debret, M., Desmet, M., Didier, J., Essallami, L., Galop, D., Gilli, A., Haas, J. N., Kallel, N., Millet, L., Stock, A.,
10 Turon, J. L., and Wirth, S.: North–south palaeohydrological contrasts in the central Mediterranean during the Holocene: tentative synthesis and working hypotheses, *Clim. Past*, 9, 2043–2071, doi:10.5194/cp-9-2043-2013, 2013.

Martrat, B., Grimalt, J. O., Lopez-Martinez, C., Cacho, I., Sierro, F. J., Flores, J. A., Zahn, R., Canals, M., Curtis, J. H., and Hodell, D. A.: Abrupt temperature changes in the Western
15 Mediterranean over the past 250 000 years, *Science*, 306, 1762–1765, 2004.

Mayewski, P. A., Rohling, E. E., Stager, J. C., Karl n, W., Maasch, K. A., Meeker, L. D., Meyerson, E. A., Gasse, F., Kreveld, S. V., Holmgren, K., Lee-Thorp, J., Rosqvist, G., Rack, F., Staubwasser, M., Schneider, R. R., and Steig, E. J.: Holocene climate variability, *Quaternary Res.*, 62, 243–255, 2004.

20 McDermott, F.: Palaeo-climate reconstruction from stable isotope variations in speleothems: a review, *Quaternary Sci. Rev.*, 23, 901–918, 2004.

McGee, D., deMenocal, P. B., Winckler, G., Stuut, J. B. W., and Bradtmiller, L. I.: The magnitude, timing and abruptness of changes in North African dust deposition over the last 20 000 yr, *Earth Planet. Sc. Lett.*, 371–372, 163–176, 2013.

25 Mickler, P. J., Banner, J. L., Stern, L., Asmeron, Y., Edwards, R. L., and Ito, E.: Stable isotope variations in modern tropical speleothems: evaluating equilibrium vs. kinetic isotope effects, *Geochim. Cosmochim. Ac.*, 68, 4381–4393, 2004.

Mickler, P. J., Stern, L. A., and Banner, J. L.: Large kinetic isotope effects in modern speleothems, *Geol. Soc. Am. Bull.*, 118, 65–81, 2006.

30 Morrellon, M., Zvalero-Garces, B., Vegas-Vilarrubia, T., Gonzalez-Samperiz, P., Romero, O., Delgado-Huertas, A., Mata, P., Moreno, A., Rico, M., and Corella, J. P.: Lateglacial and Holocene paleohydrology in the western Mediterranean region: the Lake Estanya record (NE Spain), *Quaternary Sci. Rev.*, 28, 2582–2599, 2009.

Evidence of a prolonged drought ca. 4200 yr BP

J. Ruan et al.

[Title Page](#)

[Abstract](#)

[Introduction](#)

[Conclusions](#)

[References](#)

[Tables](#)

[Figures](#)



[Back](#)

[Close](#)

[Full Screen / Esc](#)

[Printer-friendly Version](#)

[Interactive Discussion](#)



- Reimer, P. J., Bard, E., Bayliss, A., Beck, J. W., Blackwell, P. J., Bronk Ramsey, C., Buck, C. E., Cheng, H., Edwards, R. L., Friedrich, M., Grootes, P. M., Guilderson, T. P., Hafliadason, H., Hajdas, I., Hatté, C., Heaton, T. J., Hoffmann, D. L., Hogg, A. G., Hughen, K. A., Kaiser, K. F., Kromer, B., Manning, S. W., Niu, M., Reimer, R. W., Richards, D. A., Scott, E. M., Southon, J. R., Staff, R. A., Turney, C. S. M., and van der Plicht, J.: IntCal13 and Marine13 radiocarbon age calibration curves 0–52 000 years cal BP, *Radiocarbon*, 55, 1869–1887, 2013.
- Riehla, S., Pustovoytov, K. E., Weippert, H., Klett, S., and Hole, F.: Drought stress variability in ancient Near Eastern agricultural systems evidenced by $\delta^{13}\text{C}$ in barley grain, *P. Natl. Acad. Sci. USA*, 111, 12348–12353, 2014.
- Roberts, N., Brayshaw, D., Kuzucuoglu, C., Perez, R., and Sadori, L.: The mid-Holocene climatic transition in the Mediterranean: causes and consequences, *Holocene*, 21, 3–13, 2011.
- Roland, T. P.: Was there a “4.2 kyr event” in Great Britain and Ireland? Evidence from the Peatland Record, PhD thesis, University of Exeter, Exeter, UK, 2012.
- Sadori, L. and Giardini, M.: Charcoal analysis, a method to study vegetation and climate of the Holocene: the case of Lago di Pergusa (Sicily, Italy), *Geobios-Lyon*, 40, 173–180, 2007.
- Sadori, L. and Narcisi, B.: The postglacial record of environmental history from Lago di Pergusa, Sicily, *Holocene*, 11, 655–672, 2001.
- Sadori, L., Jahns, S., and Peyron, O.: Mid-Holocene vegetation history of the central Mediterranean, *Holocene*, 21, 117–129, 2011.
- Scholz, D. and Hoffmann, D. L.: StalAge – an algorithm designed for construction of speleothem age models, *Quat. Geochronol.*, 6, 369–382, 2011.
- Seager, R., Ting, M., Held, I., Kushnir, Y., Lu, J., Vecchi, G., Huang, H. P., Harnik, N., Leetmaa, A., Lau, N. C., Li, C., Velez, J., and Naik, N.: Model projections of an imminent transition to a more arid climate in southwestern North America, *Science*, 316, 1181–1184, 2007.
- Staubwasser, M. and Weiss, H.: Holocene climate and cultural evolution in late prehistoric-early historic West Asia, *Quaternary Res.*, 66, 372–378, 2006.
- Staubwasser, M., Sirocko, F., Grootes, P., and Segl, M.: Climate change at the 4.2 ka BP termination of the Indus valley civilization and Holocene south Asian monsoon variability, *Geophys. Res. Lett.*, 30, 1–4, 2003.
- Tindall, J. C. and Valdes, P. J.: Modeling the 8.2 ka event using a coupled atmosphere–ocean GCM, *Global Planet. Change*, 79, 312–321, 2011.

Evidence of a prolonged drought ca. 4200 yr BP

J. Ruan et al.

[Title Page](#)

[Abstract](#)

[Introduction](#)

[Conclusions](#)

[References](#)

[Tables](#)

[Figures](#)



[Back](#)

[Close](#)

[Full Screen / Esc](#)

[Printer-friendly Version](#)

[Interactive Discussion](#)



Touchan, R., Anchukaitis, K. J., Meko, D. M., Attalah, S., Baisan, C., and Aloui, A.: Long term context for recent drought in northwestern Africa, *Geophys. Res. Lett.*, 35, L13705, doi:10.1029/2008GL034264, 2008.

Touchan, R., Anchukaitis, K. J., Meko, D. M., Sabir, M., Attalah, S., and Aloui, A.: Spatiotemporal drought variability in northwestern Africa over the last nine centuries, *Clim. Dynam.*, 37, 237–252, 2011.

Vaks, A., Woodhead, J., Bar-Matthews, M., Ayalon, A., Cliff, R. A., Zilberman, T., Matthews, A., and Frumkin, A.: Pliocene–Pleistocene climate of the northern margin of Saharan–Arabian Desert recorded in speleothems from the Negev Desert, Israel, *Earth Planet. Sc. Lett.*, 368, 88–100, 2013.

Wanner, H., Beer, J., Bütikofer, J., Crowley, T. J., Cubasch, U., Flückiger, J., Goosse, H., Grosjean, M., Joos, F., Kaplan, J. O., Küttel, M., Müller, S. A., Prentice, C. I., Solomina, O., Stocker, T. F., Tarasov, P., Wagner, M., and Widmann, M.: Mid to Late Holocene climate change: an overview, *Quaternary Sci. Rev.*, 27, 1791–1828, 2008.

Weiss, H. and Bradley, R. S.: What drives societal collapse?, *Science*, 291, 609–610, 2000.

Weiss, H., Courty, M.-A., Wetterstrom, W., Guichard, F., Senior, L., Meadow, R., and Curnow, A.: The genesis and collapse of third millennium North Mesopotamian civilization, *Science*, 261, 995–1004, 1993.

Wiener, M. H.: The interaction of climate change and agency in the collapse of civilizations ca. 2300–2000 BC, *Radiocarbon*, 56, doi:10.2458/azu_rc.56.18325, 2014.

Zanchetta, G., Drysdale, R. N., Hellstrom, J. C., Fallick, A. E., Isola, I., Gagan, M. K., and Paresch, M. T.: Enhanced rainfall in the Western Mediterranean during deposition of sapropel S1: stalagmite evidence from Corchia cave (Central Italy), *Quaternary Sci. Rev.*, 26, 279–286, 2007.

Zanchetta, G., Bar-Matthews, M., Drysdale, R. N., Lionello, P., Ayalon, A., Hellstrom, J. C., Isola, I., and Regattieri, E.: Coeval dry events in the central and eastern Mediterranean basin at 5.2 and 5.6 ka recorded in Corchia (Italy) and Soreq caves (Israel) speleothems, *Global Planet. Change*, 122, 130–139, 2014.

Evidence of a prolonged drought ca. 4200 yr BP

J. Ruan et al.

Table 1. U/Th dates from MC-ICP-MS analyses of stalagmites GLD1-stm2 and GLD1-stm4 from the Gueldaman GLD1 Cave. Analytical errors are 2σ of the mean. U decay constants: $\lambda_{238} = 1.55125 \times 10^{-10}$ (Jaffey et al., 1971) and $\lambda_{234} = 2.82206 \times 10^{-6}$ (Cheng et al., 2013). Th decay constant: $\lambda_{230} = 9.1705 \times 10^{-6}$ (Cheng et al., 2013). ^a $\delta^{234}\text{U} = ([^{234}\text{U}/^{238}\text{U}]_{\text{activity}} - 1) \times 1000$. ^b $\delta^{234}\text{U}_{\text{initial}}$ was calculated based on ^{230}Th age (T), i.e., $\delta^{234}\text{U}_{\text{initial}} = \delta^{234}\text{U}_{\text{measured}} \times e^{\lambda_{234} \times T}$. Corrected ^{230}Th ages assume the initial $^{230}\text{Th}/^{232}\text{Th}$ atomic ratio of $4.4 \pm 2.2 \times 10^{-6}$. Those are the values for a material at secular equilibrium, with the bulk earth $^{232}\text{Th}/^{238}\text{U}$ value of 3.8. The errors are arbitrarily assumed to be 50%. ^c BP stands for “Before Present” where the “Present” is defined as the year 2000 AD.

Sample Number	^{238}U (ppb)	^{232}Th (ppt)	$^{230}\text{Th}/^{232}\text{Th}$ (atomic $\times 10^{-6}$)	$\delta^{234}\text{U}^{\text{a}}$ (measured)	$^{230}\text{Th}/^{238}\text{U}$ (activity)	^{230}Th Age (yr) (uncorrected)	^{230}Th Age (yr) (corrected)	$\delta^{234}\text{U}_{\text{initial}}^{\text{b}}$ (corrected)	^{230}Th Age (yr BP) ^c (corrected)	Laboratory
GLD1-stm2-7	169 ± 0.1	396 ± 0	136 ± 1	863 ± 2.3	0.105 ± 0.001	6297 ± 40	6228 ± 72	863 ± 2.3	6228 ± 72	LSCE
GLD1-stm2-36	154 ± 0.2	1922 ± 39	137 ± 3	910 ± 2.2	0.103 ± 0.000	6036 ± 29	5848 ± 136	925 ± 2.3	5835 ± 136	UM
GLD1-stm2-98	150 ± 0.2	69 ± 2	3077 ± 73	776 ± 2.4	0.086 ± 0.000	5374 ± 29	5366 ± 29	788 ± 2.5	5353 ± 29	UM
GLD1-stm2-180	152 ± 0.2	161 ± 3	1157 ± 25	644 ± 2.0	0.074 ± 0.000	5036 ± 30	5018 ± 33	653 ± 2.1	5005 ± 33	UM
GLD1-stm2-192	162 ± 0.1	182 ± 4	1158 ± 24	807 ± 1.7	0.079 ± 0.000	4858 ± 16	4840 ± 20	818 ± 1.7	4827 ± 20	UM
GLD1-stm2-213	175 ± 0.2	547 ± 11	390 ± 8	697 ± 2.0	0.074 ± 0.000	4841 ± 33	4788 ± 50	707 ± 2.1	4775 ± 50	UM
GLD1-stm2-286	169 ± 0.2	207 ± 4	980 ± 21	756 ± 1.8	0.073 ± 0.000	4601 ± 25	4581 ± 28	765 ± 1.9	4568 ± 28	UM
GLD1-stm2-320	195 ± 0.3	384 ± 8	575 ± 12	759 ± 2.2	0.069 ± 0.000	4321 ± 26	4288 ± 34	769 ± 2.2	4276 ± 34	Xi'an U
GLD1-stm2-340	194 ± 0.3	354 ± 7	612 ± 13	800 ± 2.9	0.068 ± 0.000	4172 ± 20	4142 ± 29	809 ± 2.9	4129 ± 29	UM
GLD1-stm4-10	105 ± 0.1	283 ± 6	415 ± 11	322 ± 1.5	0.068 ± 0.001	5734 ± 90	5675 ± 99	327 ± 1.6	5662 ± 99	UM
GLD1-stm4-24	126 ± 0.1	983 ± 20	135 ± 3	347 ± 1.9	0.064 ± 0.001	5311 ± 49	5143 ± 128	352 ± 1.9	5131 ± 128	Xi'an U
GLD1-stm4-30	106 ± 0.1	1362 ± 27	80 ± 2	298 ± 1.9	0.062 ± 0.001	5321 ± 57	5035 ± 210	302 ± 1.9	5023 ± 210	Xi'an U
GLD1-stm4-47	96 ± 0.1	1104 ± 22	88 ± 2	290 ± 1.9	0.062 ± 0.001	5341 ± 63	5082 ± 194	294 ± 1.9	5070 ± 194	Xi'an U
GLD1-stm4-70	224 ± 0.4	749 ± 15	254 ± 5	334 ± 2.5	0.051 ± 0.000	4282 ± 27	4210 ± 58	338 ± 2.6	4197 ± 58	UM
GLD1-stm4-113	155 ± 0.2	130 ± 3	910 ± 20	363 ± 2.1	0.046 ± 0.000	3761 ± 29	3743 ± 32	367 ± 2.1	3730 ± 32	UM
GLD1-stm4-152	180 ± 0.3	582 ± 12	226 ± 5	373 ± 2.0	0.045 ± 0.000	3590 ± 25	3521 ± 54	376 ± 2.0	3508 ± 54	UM
GLD1-stm4-195	175 ± 0.1	929 ± 19	131 ± 4	369 ± 1.7	0.042 ± 0.001	3403 ± 74	3290 ± 108	372 ± 1.8	3277 ± 108	UM

[Title Page](#)
[Abstract](#)
[Introduction](#)
[Conclusions](#)
[References](#)
[Tables](#)
[Figures](#)

[Back](#)
[Close](#)
[Full Screen / Esc](#)
[Printer-friendly Version](#)
[Interactive Discussion](#)


Evidence of a prolonged drought ca. 4200 yr BP

J. Ruan et al.

[Title Page](#)

[Abstract](#)

[Introduction](#)

[Conclusions](#)

[References](#)

[Tables](#)

[Figures](#)



[Back](#)

[Close](#)

[Full Screen / Esc](#)

[Printer-friendly Version](#)

[Interactive Discussion](#)



Table 3. Summary of the features of climate and human activity in different climate stages and occupation phases. Stages/phases 1–3 (bold) are presented in Fig. 7.

Climate stage	Age (^{230}Th yr)	Climate condition	Occupation phase	Age (^{14}C cal yr)	Human activity
–	–	–	0	~ 7002–6003	Permanent and intensive occupation
1	~ 6200–5100	Wet & oscillatory	1	~ 6003–4918	Permanent but less intensive occupation
2	~ 5100–4400	Wettest, ending with a dramatic shift in the last ~ 200 years	2	~ 4918–4403	Permanent and most intensive occupation
3	~ 4400–3800	Extremely dry	3	~ 4403–1484	Abandonment of the cave/occasional visit
4	~ 3800–3200	Relatively wet	4	~ 1484–	Re-occupation of the cave

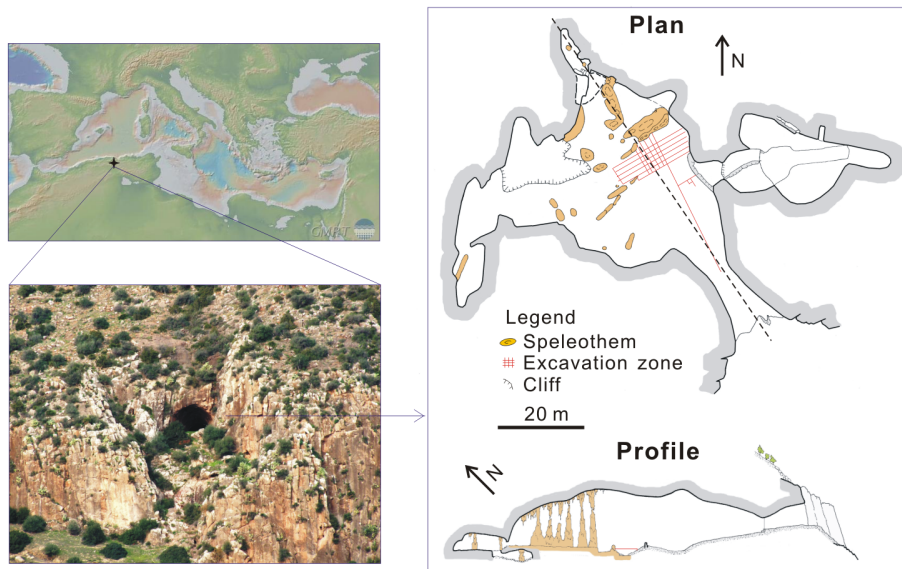


Figure 1. The Gueldaman GLD1 Cave (36°26' N, 4°34' E, 507 m a.s.l.). The top left shows the location of the Gueldaman GLD1 Cave, in the N-Algeria of W-Mediterranean basin; the low left shows a photo of cave entrance and local vegetation cover; the right panel shows maps of inner cave where stalagmites and archaeological deposits are collected.

Evidence of a prolonged drought ca. 4200 yr BP

J. Ruan et al.

Title Page	
Abstract	Introduction
Conclusions	References
Tables	Figures
◀	▶
◀	▶
Back	Close
Full Screen / Esc	
Printer-friendly Version	
Interactive Discussion	



Evidence of a prolonged drought ca. 4200 yr BP

J. Ruan et al.

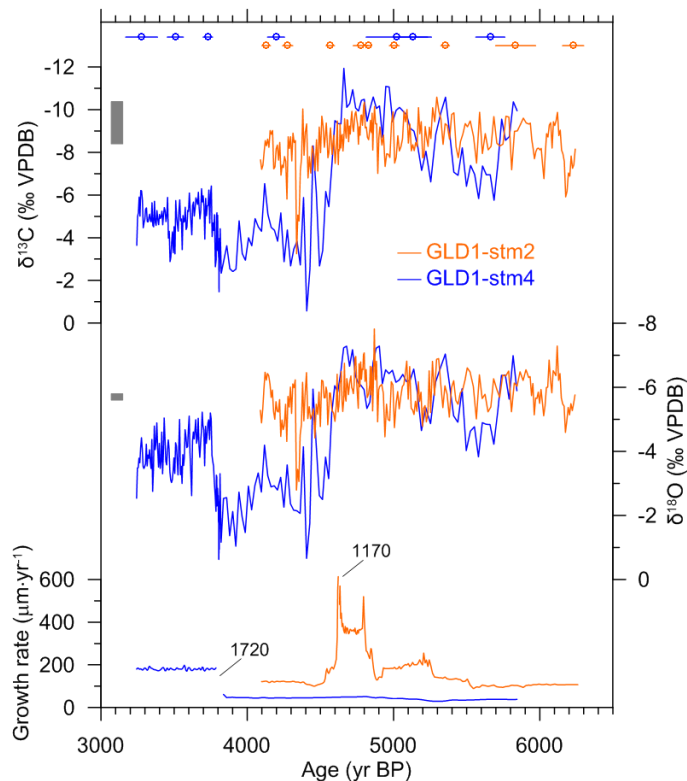


Figure 4. The $\delta^{18}\text{O}$, $\delta^{13}\text{C}$ and growth rate of stalagmites GLD1-stm2 and GLD1-stm4 from the Gueldaman GLD1 Cave. U/Th dates with 2σ errors are presented at the top. The isotopic ranges of modern calcites are also shown on the left (rectangles). Growth rates were calculated from the StalAge age model. Note that the extraordinarily high and episodic growth rate at ca. 4600 yrBP in stalagmite GLD1-stm2 and at ca. 3800 yrBP in stalagmite GLD1-stm4 are likely attributed to artificial simulations by the StalAge program and thus not discussed in terms of climate in the text.

Title Page

Abstract

Introduction

Conclusions

References

Tables

Figures

◀

▶

◀

▶

Back

Close

Full Screen / Esc

Printer-friendly Version

Interactive Discussion



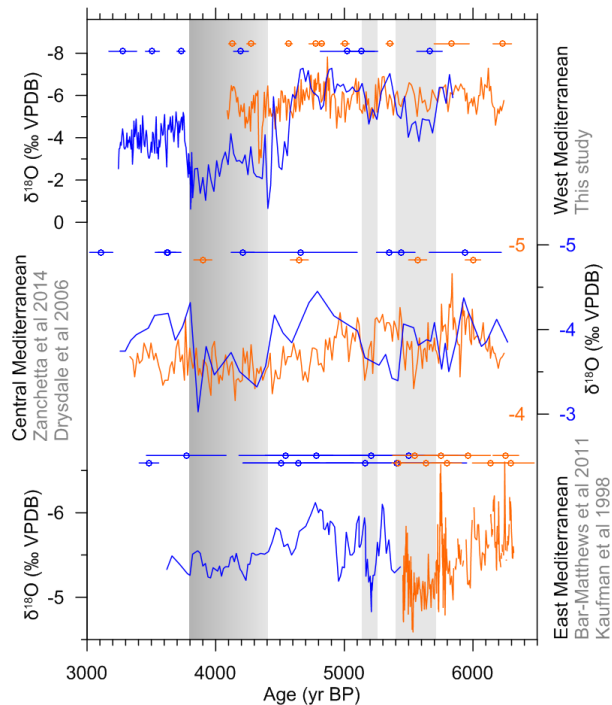


Figure 5. Comparison of high-resolution Mid-Holocene stalagmite $\delta^{18}\text{O}$ records across the Mediterranean basin. From the top to bottom are stalagmite records from the Gueldaman GLD1 Cave in N-Algeria of W-Mediterranean basin (this study), the Corchia Cave (Zanchetta et al., 2014) and the Renella Cave (Drysdale et al., 2006) in Central Italy of Central Mediterranean basin, and the Soreq Cave (Bar-Matthews and Ayalon, 2011; Kaufman et al., 1998) in Israel of E-Mediterranean basin. Different stalagmites from each area are represented in distinct colors. U/Th dates with 2σ errors are shown at the top of each curve. Ages are reported in years before 2000 AD.

Evidence of a prolonged drought ca. 4200 yr BP

J. Ruan et al.

Title Page

Abstract Introduction

Conclusions References

Tables Figures

◀ ▶

◀ ▶

Back Close

Full Screen / Esc

Printer-friendly Version

Interactive Discussion



Evidence of a prolonged drought ca. 4200 yr BP

J. Ruan et al.

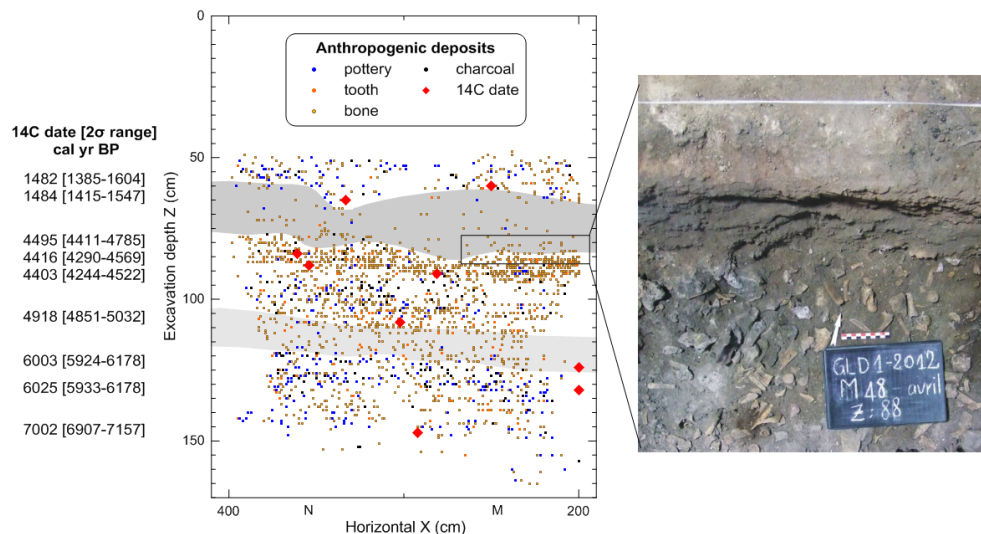


Figure 6. Radiocarbon dating of anthropogenic deposits layers in excavation sector S2 inside the Gueldaman GLD1 Cave. From the left to right are ^{14}C dates of charcoal samples, anthropogenic deposit distribution, and a photo at depth across $\sim 75\text{--}88$ cm showing a transition of layer from rich to rare anthropogenic deposits. Note that the gray colours highlight two phases with diminished anthropogenic remains (especially pottery and charcoal) at ca. 4403–1484 cal yr BP (depths of $\sim 75\text{--}60$ cm) and ca. 6003–4918 cal yr BP (depths of $\sim 120\text{--}105$ cm).

Title Page

Abstract

Introduction

Conclusions

References

Tables

Figures



Back

Close

Full Screen / Esc

Printer-friendly Version

Interactive Discussion



Evidence of a prolonged drought ca. 4200 yr BP

J. Ruan et al.

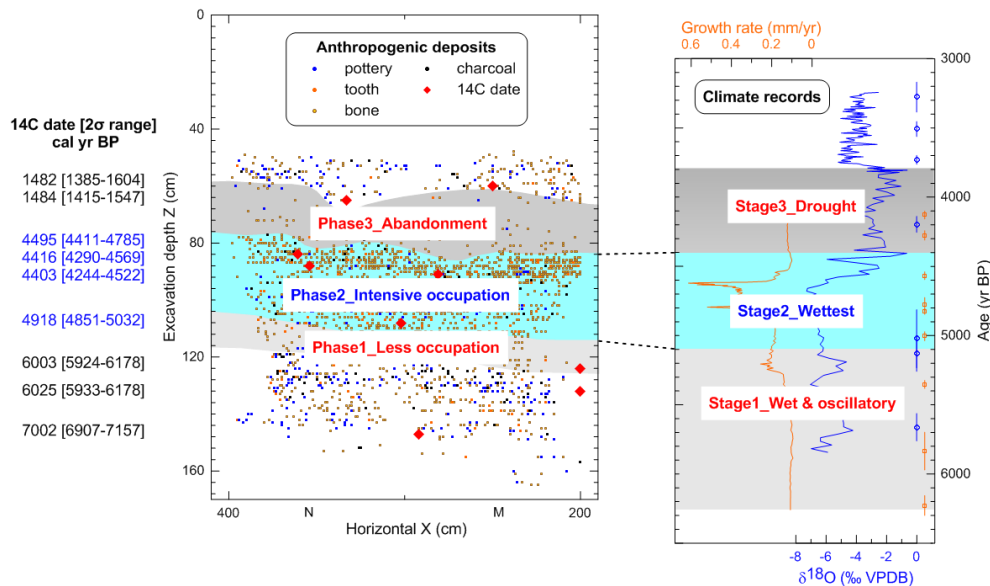


Figure 7. Comparison between evidence of ancient human occupation and of past climate change from the Gueldaman GLD1 Cave. Stages/phases 1–3 are same to those defined in Table 3.

[Title Page](#)

[Abstract](#) | [Introduction](#)

[Conclusions](#) | [References](#)

[Tables](#) | [Figures](#)

[◀](#) | [▶](#)

[◀](#) | [▶](#)

[Back](#) | [Close](#)

[Full Screen / Esc](#)

[Printer-friendly Version](#)

[Interactive Discussion](#)

