

Supplement of *Clim. Past Discuss.*, 11, 1701–1739, 2015
<http://www.clim-past-discuss.net/11/1701/2015/>
doi:10.5194/cpd-11-1701-2015-supplement
© Author(s) 2015. CC Attribution 3.0 License.



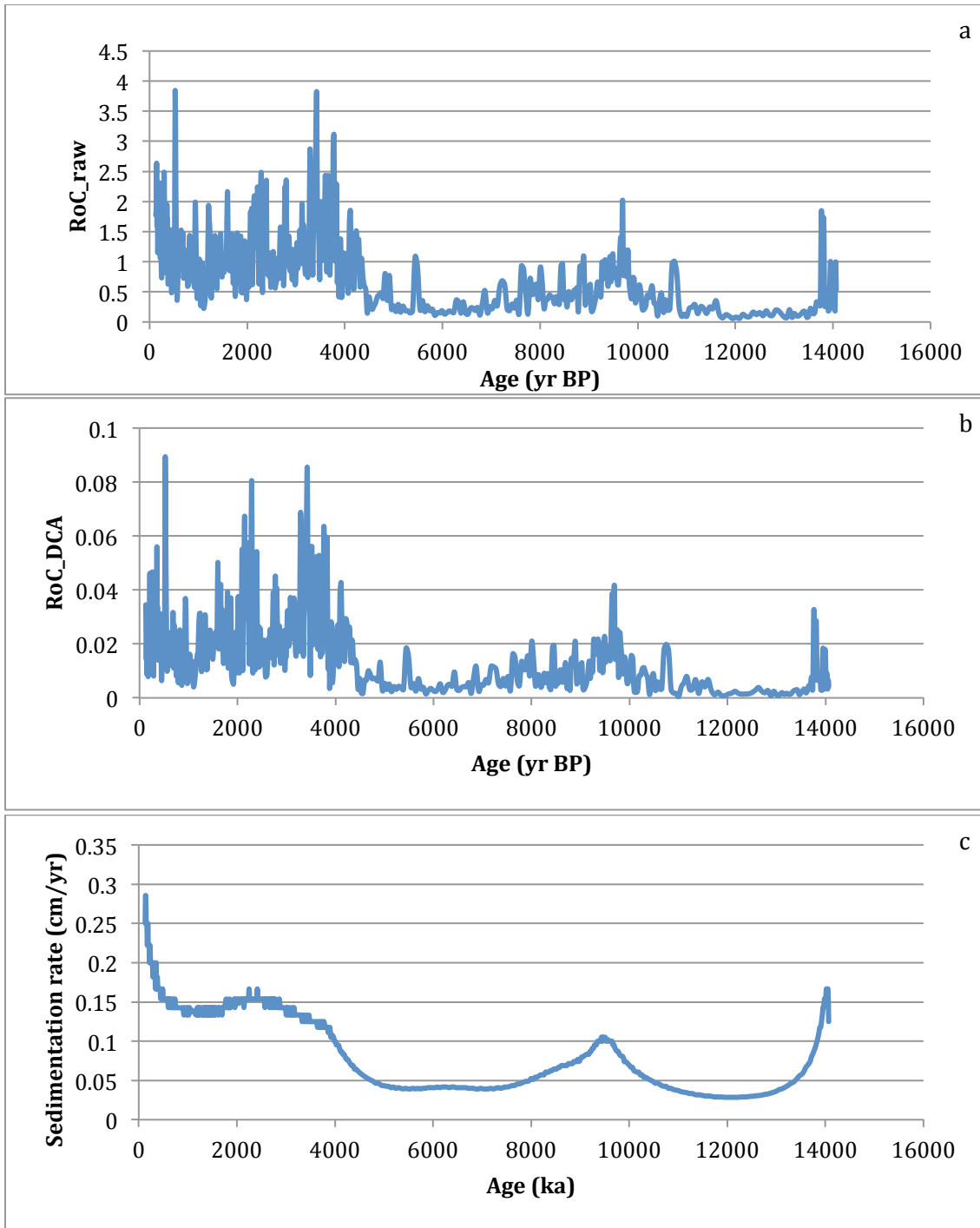
Supplement of

Rapid millennial-scale vegetation changes in the tropical Andes

D. H. Urrego et al.

Correspondence to: D. H. Urrego (d.urrego@exeter.ac.uk)

The copyright of individual parts of the supplement might differ from the CC-BY 3.0 licence.



Supplementary Figure 1. Rates of change (RoC) and sedimentation rate calculated for La Cocha record. a: RoC calculated based on Euclidean distance between subsequent samples using raw percentages, plotted against age. b: RoC calculated based on a Euclidean distance between the first four DCA axes, plotted against age. c: Sedimentation rate plotted against age.