

The WAIS Divide deep ice core WD2014 chronology – Part 2: Methane synchronization (68–31 ka BP) and the gas age-ice age difference

C. Buizert¹, K. M. Cuffey², J. P. Severinghaus³, D. Baggenstos³, T. J. Fudge⁴, E. J. Steig⁴, B. R. Markle⁴, M. Winstrup⁴, R. H. Rhodes¹, E. J. Brook¹, T. A. Sowers⁵, G. D. Clow⁶, H. Cheng^{7,8}, R. L. Edwards⁸, M. Sigl⁹, J. R. McConnell⁹, and K. C. Taylor⁹

¹College of Earth, Ocean, and Atmospheric Sciences, Oregon State University, Corvallis, OR 97331, USA

²Department of Geography, University of California, Berkeley, CA 94720, USA

³Scripps Institution of Oceanography, University of California, San Diego, La Jolla, CA 92093, USA

⁴Quaternary Research Center and Department of Earth and Space Sciences, University of Washington, Seattle, WA 98195, USA

⁵Department of Geosciences and Earth and Environmental Systems Institute, Pennsylvania State University, University Park, PA 16802, USA

⁶US Geological Survey, Boulder, CO 80309, USA

⁷Institute of Global Environmental Change, Xi'an Jiaotong University, Xi'an 710049, China

⁸Department of Geology and Geophysics, University of Minnesota, Minneapolis, MN 55455, USA

⁹Desert Research Institute, Nevada System of Higher Education, Reno, NV 89512, USA

Correspondence to: Christo Buizert (buizerc@science.oregonstate.edu)

Abstract. The West Antarctic Ice Sheet Divide (WAIS Divide, WD) ice core is a newly drilled, high-accumulation deep ice core that provides Antarctic climate records of the past ~ 68 ka at unprecedented temporal resolution. The upper 2850 m (back to 31.2 ka BP) have been dated using annual-layer counting. Here we present a chronology for the deep part of the core (67.8–31.2 ka BP), which is based on stratigraphic matching to annual-layer-counted Greenland ice cores using globally well-mixed atmospheric methane. We calculate the WD gas age-ice age difference (Δage) using a combination of firn densification modeling, ice flow modeling, and a dataset of $\delta^{15}\text{N-N}_2$, a proxy for past firn column thickness. The largest Δage at WD occurs during the last glacial maximum, and is 525 ± 120 years. Internally consistent solutions can be found only when assuming little-to-no influence of impurity content on densification rates, contrary to a recently proposed hypothesis. We synchronize the WD chronology to a linearly scaled version of the layer-counted Greenland Ice Core Chronology (GICC05), which brings the age of Dansgaard-Oeschger (DO) events into agreement with the U/Th absolutely dated Hulu Cave speleothem record. The small Δage at WD provides valuable opportunities to investigate

the timing of atmospheric greenhouse gas variations relative to Antarctic climate, as well as the interhemispheric phasing of the “bipolar seesaw”.

1 Introduction

Deep ice cores from the polar regions provide high-resolution climate records of past atmospheric composition, aerosol loading and polar temperatures (e.g. NGRIP community members, 2004; EPICA Community Members, 2006; Wolff et al., 2006; Ahn and Brook, 2008). Furthermore, the coring itself gives access to the ice sheet interior and bed, allowing investigation of glaciologically important processes such as ice deformation (Gundestrup et al., 1993), folding (NEEM community members, 2013), crystal fabric evolution (Gow et al., 1997) and geothermal heat flow (Dahl-Jensen et al., 1998). Having a reliable ice core chronology (i.e., an age-depth relationship) is paramount for the interpretation of the climate records and comparison to marine and terrestrial paleoclimate archives.

The West Antarctic Ice Sheet Divide (WAIS Divide, WD) ice core (79.48° S, 112.11° W, 1766 m above sea level, –30 °C present-day mean annual temperature) was drilled and recovered to 3404 m depth (WAIS Divide Project Mem-
 45 bers, 2013). Drilling was stopped 50 m above the estimated bedrock depth to prevent contamination of the basal hydrology. Due to high accumulation rates of 22 cm ice a⁻¹ at present and ~ 10 cm ice a⁻¹ during the last glacial maximum (LGM), the WD core delivers climate records of unprece-
 50 dented temporal resolution (Steig et al., 2013; Sigl et al., 2013) as well as gas records that are only minimally affected by diffusive smoothing in the firn column (Mischler et al., 2009; Mitchell et al., 2011, 2013; Marcott et al., 2014). The
 55 combination of high accumulation rates and basal melting at the WD site results in ice near the bed that is relatively young (~ 68 ka) compared to cores drilled in central East Antarctica.

In WD, annual layers can be identified reliably for the upper 2850 m of the core, reaching back to 31.2 ka BP (thou-
 60 sands of years before present, with present defined as 1950 C.E.). Below 2850 m depth an alternative dating strategy is needed. Several methods have been employed previously at other deep ice core sites. First, orbital tuning via $\delta\text{O}_2/\text{N}_2$ has
 65 been applied successfully to several Antarctic cores (Bender, 2002; Kawamura et al., 2007). However, an age span of only ~ 3 precessional cycles in WD, in combination with the low signal-to-noise ratio of $\delta\text{O}_2/\text{N}_2$ data, makes this technique unsuitable for WD. The uncertainty in the orbital tuning is
 70 about one fourth of a precessional cycle (~ 5 ka), making it a relatively low-resolution dating tool. Second, in Greenland, ice flow modeling has been used to extend layer-counted chronologies (e.g., Johnsen et al., 2001; Wolff et al., 2010). This method requires assumptions about past accumulation
 75 rates, ice flow and ice sheet elevation. Particularly for the oldest WD ice, the resulting uncertainty would be substantial. Third, several radiometric techniques have been proposed to date ancient ice. Radiocarbon (¹⁴C) dating of atmospheric CO₂ trapped in the ice is unsuitable as it suffers from *in situ*
 80 cosmogenic production in the firn (Lal et al., 1990), and the oldest WD ice dates beyond the reach of ¹⁴C dating. Other absolute (radiometric) dating techniques, such as recoil ²³⁴U dating (Aciego et al., 2011), ⁸¹Kr dating (Buizert et al., 2014) or atmospheric ⁴⁰Ar build-up (Bender et al., 2008) currently
 85 suffer from uncertainties that are too large (≥ 20 ka) to make them applicable at WD.

Instead, at WD we use stratigraphic matching to well-dated Greenland ice cores using globally well-mixed atmospheric methane (CH₄) mixing ratios (Blunier et al., 1998; 140
 90 Blunier and Brook, 2001; Blunier et al., 2007; Petrenko et al., 2006; EPICA Community Members, 2006; Capron et al., 2010). This method is particularly suited to WD because of the small gas age-ice age difference (Δage , Sect. 3) and the high-resolution, high-precision CH₄ record available
 95 (Sect. 2.1). The method has three main sources of uncertainty: (i) the age uncertainty in the records one synchro-

nizes to, (ii) Δage of the ice core being dated, and (iii) the interpolation scheme used in between the CH₄ tie-points. We present several improvements over previous work that reduce and quantify these uncertainties: (i) we combine the layer-counted Greenland Ice Core Chronology (GICC05) and a recently refined version of the U/Th-dated Hulu speleothem record (Edwards et al., in review; Reimer et al., 2013; Southon et al., 2012) to obtain a more accurate estimate of the (absolute) ages of abrupt Dansgaard-Oeschger (DO) events (Sect. 4.4); (ii) we combine firn densification modeling, ice flow modeling, a new WD $\delta^{15}\text{N}-\text{N}_2$ dataset that spans the entire core, and a Monte Carlo sensitivity study to obtain a reliable Δage estimate (Sect. 3); and (iii) we compare four different interpolation schemes to obtain an objective estimate of the interpolation uncertainty (Sect. 4.5).

This work is the second part in a series of two papers describing the WD2014 chronology for the WD core in detail. The first part describes the development of the annual layer count from both multi-parameter chemistry and electrical conductivity measurements. The WD2014 chronology is currently the recommended gas and ice timescale for the WD deep core, and as such it supersedes the previously published WDC06A-7 chronology (WAIS Divide Project Mem-
 bers, 2013).

2 Methods

2.1 Data description

Measurements of water stable isotopes. Water isotopic composition ($\delta^{18}\text{O}$ and $\delta\text{D} = \delta^2\text{H}$) was measured at IsoLab, University of Washington. Procedures for the deep section of the core are identical to those used for the upper part of the core reported in WAIS Divide Project Members (2013); Steig et al. (2013). Measurements were made at 0.25 to 0.5 m depth resolution using laser spectroscopy (Picarro L2120-*i* water isotope analyzer), and normalized to VSMOW-SLAP (Vienna Standard Mean Ocean Water – Standard Light Antarctic Precipitation). The precision of the measurements is better than 0.1 and 0.8 ‰ for $\delta^{18}\text{O}$ and δD , respectively.

Measurements of CH₄. Two CH₄ datasets were used for WD. The first is from discrete ice samples, and was measured jointly at Pennsylvania State University (0–68 ka, 0.5–2 m resolution) and at Oregon State University (11.4–24.8 ka, 1–2 m resolution). Air was extracted from ~ 50 gram ice samples using a melt-refreeze technique, and analyzed on a standard gas chromatograph equipped with a flame-ionization detector. Corrections for solubility, blank size and gravitational enrichment are applied (Mitchell et al., 2011; WAIS Divide Project Members, 2013). The second dataset is a continuous CH₄ record measured by coupling a laser spectrometer to a continuous flow analysis setup (Stowasser et al., 2012; Rhodes et al., 2013), and was measured jointly by Oregon State University and the Desert Research Institute

(Rhodes et al., in review). The continuous dataset is used to identify the abrupt DO transitions, as it provides better temporal resolution and analytical precision. Both records are reported on the NOAA04 scale (Dlugokencky et al., 2005). Analytical precision in the CH₄ data (2σ pooled standard deviation) is around 3.2 ppb and 14 ppb for the discrete data from OSU and PSU, respectively, and 3 to 8 ppb for the continuous CH₄ data, depending on the analyzer used (Rhodes et al., in review); the 14 ppb stated for the PSU discrete data may be an overestimation, as depth-adjacent (rather than true replicate) samples were used in the analysis.

Measurements of $\delta^{15}\text{N}$. Atmospheric N₂ isotopic composition ($\delta^{15}\text{N}$) was measured at Scripps Institution of Oceanography, University of California. Air was extracted from ~ 12 gram ice samples using a melt-refreeze technique, and collected in stainless steel tubes at liquid-He temperature. $\delta^{15}\text{N}$ was analyzed using conventional dual-inlet Isotope Ratio Mass Spectrometry (IRMS) on a Thermo Finnigan Delta V mass spectrometer. Results are normalized to La Jolla (California, USA) air, and routine analytical corrections are applied (Sowers et al., 1989; Petrenko et al., 2006; Severinghaus et al., 2009). Duplicates were not run for most $\delta^{15}\text{N}$ data in this study, but the pooled standard deviations of Holocene WAIS Divide $\delta^{15}\text{N}$ data sets with duplicate analyses are 0.003 ‰ (Orsi, 2013). We conservatively adopt an analytical uncertainty of 0.005 ‰ for this data set to allow for other sources of error.

Measurements of [Ca]. Ca concentrations in the ice were measured at the Ultra Trace Chemistry Laboratory at the Desert Research Institute via continuous flow analysis. Longitudinal samples of ice (approximately 100 cm \times 3.3 cm \times 3.3 cm) were melted continuously on a melter head that divides the melt water into three parallel streams. Elemental measurements were made on melt water from the innermost part of the core with ultra-pure nitric acid added to the melt stream immediately after the melter head; potentially contaminated water from the outer part of the ice is discarded. Elemental analysis of the innermost melt water stream is performed in parallel on two inductively coupled plasma mass spectrometers (ICPMS), each measuring a different set of elements; some elements were analyzed on both. The dual ICPMS setup allows for measurement of a broad range of 30 elements and data quality control (McConnell et al., 2002, 2007). Precision of the Ca measurements in WD glacial ice is estimated to be $\pm 3\%$, with a lower detection limit of 0.15 ng g⁻¹. Continuous Ca and CH₄ measurements are done on the same ice, and are exactly co-registered in depth.

2.2 Firn densification model description

Air exchange with the overlying atmosphere keeps the interstitial air in the porous firn layer younger than the surrounding ice matrix, resulting in an age difference between polar ice and the gas bubbles it contains, commonly referred to as Δage (Schwander and Stauffer, 1984). Here we use a cou-

pled firn densification – heat diffusion model to calculate Δage back in time (Barnola et al., 1991; Goujon et al., 2003; Schwander et al., 1997; Rasmussen et al., 2013), constrained by measurements of $\delta^{15}\text{N}$ of N₂, a proxy for past firn column thickness (Sowers et al., 1992). The model is based on a dynamical description of the Herron-Langway model formulated in terms of overburden load (Herron and Langway, 1980), which is solved in a Lagrangian reference frame. This model has been applied previously to the Greenland NEEM, NGRIP and GISP2 cores (Rasmussen et al., 2013; Seierstad et al., 2014; Buizert et al., 2014), where it gives a good agreement to the Goujon densification model (Rasmussen et al., 2013; Goujon et al., 2003). The model allows for the inclusion of softening of firn in response to impurity loading (Horhold et al., 2012), following the mathematical description of Freitag et al. (2013a). The equations governing the model densification rates are given in Appendix A.

The model uses a 2 year time step and 0.5 m depth resolution down to 1000 m, the lower model boundary. A thick model domain is needed because of the long thermal memory of the ice sheet. At WD, downward advection of cold surface ice is strong due to the relatively high accumulation rates, and the geothermal gradient does not penetrate the firn column (Cuffey and Paterson, 2010). We further use a lock-in density that equals the mean close-off density (Martinerie et al., 1994) minus 17.5 kg m⁻³ (as in Blunier and Schwander, 2000), and an empirical parameterization of lock-in gas age based on firn air measurements from 10 sites (Buizert et al., 2012, 2013).

We furthermore use the steady state version of the Herron-Langway model (Herron and Langway, 1980) in performing sensitivity studies (Sect. 3.2), and the dynamical Arnaud model (Arnaud et al., 2000; Goujon et al., 2003) to validate our Δage solution.

2.3 Temperature reconstruction and ice flow model

Our temperature reconstruction (Fig. 1a) is based on water δD , a proxy for local vapor condensation temperature, calibrated using a measured borehole temperature profile (following Cuffey et al., 1995; Cuffey and Clow, 1997) and, for the last 31.2 ka, adjusted iteratively to satisfy constraints on firn thickness provided by $\delta^{15}\text{N}$ and by the observed layer thickness $\lambda(z)$. Using $\delta^{18}\text{O}$ rather than δD in the temperature reconstruction leads to differences that are negligibly small. This borehole temperature calibration approach is possible at WD because the large ice thickness and relatively high accumulation rates help to preserve a memory of past temperatures in the ice sheet. A coupled 1-D ice flow-heat diffusion model converts surface $T(t)$ into a depth profile for comparison to measured borehole temperatures. The 1-D ice flow model calculates the vertical ice motion, taking into account the surface snow accumulation, the variation of density with depth, and a prescribed history of ice thickness. Vertical motion is calculated by integrating a depth-profile of strain rate

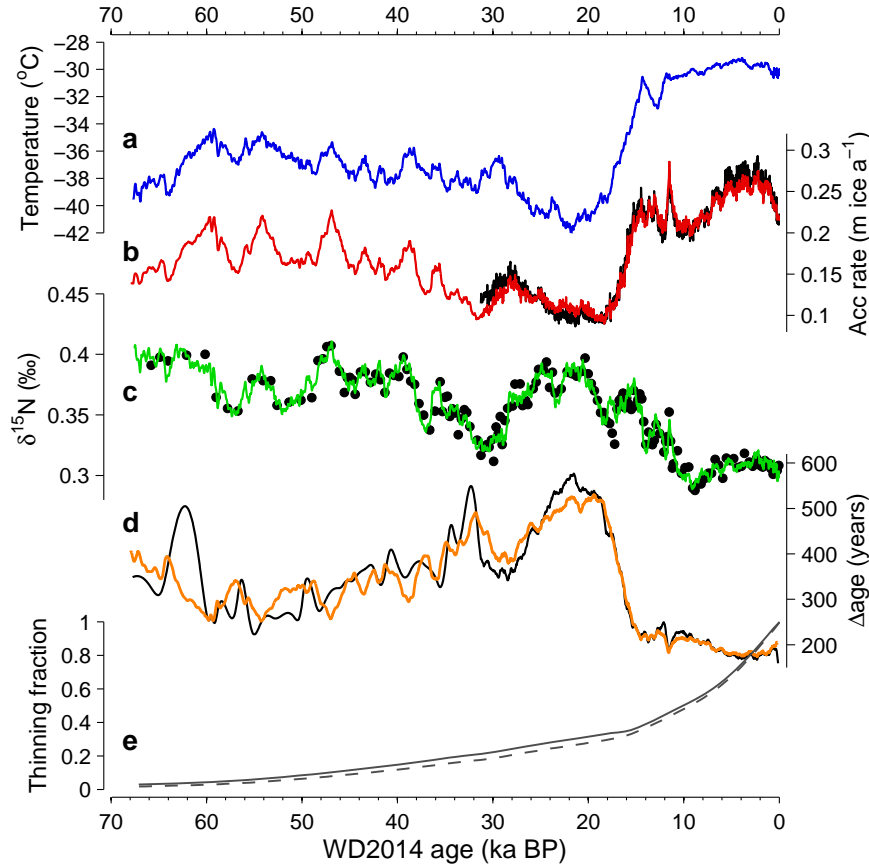


Fig. 1. Modeling Δage for WAIS Divide. **(a)** Past temperatures reconstructed from water δD , calibrated to the borehole temperature profile. **(b)** Past accumulation rates as reconstructed by the firn densification inverse model (red), and from the annual layer count (black). **(c)** $\delta^{15}\text{N}$ data (black dots) with densification model output (green). **(d)** Δage calculated using the densification model (orange) and using the Parrenin Δdepth method (black) with constant 4 m thick convective zone and no correction for thermal $\delta^{15}\text{N}$ fractionation. **(e)** Modeled thinning function from ice flow model (solid), and a simple Nye strain model for comparison (dashed); the Nye thinning function, which has a uniform strain rate as a function of depth, is given as $f_\lambda(z) = (H - z)/H$ with H the ice sheet thickness (Cuffey and Paterson, 2010, p.616).

and adding a rate of basal melt. As in the model of Dansgaard and Johnsen (1969), the strain rate maintains a uniform value between the surface and a depth equal to 80% of the ice thickness, and then varies linearly to some value at the base of the ice. This basal value is defined by the "basal stretching parameter" f_b , the ratio of strain rate at the base to strain rate in the upper 80% of the ice column. The basal ice is melting, so part of the ice motion likely occurs as sliding. The along-flow gradient in such sliding is unknown and thus so too is the parameter f_b . We overcome this problem by making both the current ice thickness and the basal melt rate free parameters when optimizing models with respect to measured borehole temperatures. Because the basal melt rate and f_b affect the vertical velocities in similar fashion, the optimization constrains a combination of melt rate and f_b that is tightly constrained by the measured temperatures. Thus we find that varying f_b through a large range, from 0.1 to 1.5, changes the reconstructed LGM temperature by less than 0.2°C. Effects of the prescribed ice-thickness history are

likewise minor; assuming a 150 m thickness increase from the LGM to 15 ka changes the reconstructed LGM temperature by less than 0.2°C compared to a constant thickness. Note that the 1-D flow model used here is simpler than the one used by Cuffey and Clow (1997) in that it does not attempt to calculate changes in the shape of the strain rate profile; the unknown basal sliding motion at the WD site negates the usefulness of such an exercise.

One output of the 1-D flow model is the strain history of ice layers as a function of depth and time. The cumulative strain is represented by the thinning function $f_\lambda(z)$ (Cuffey and Paterson, 2010), the ratio of annual layer thickness at depth in the ice sheet to its original ice-equivalent thickness at the surface when deposited. The modeled thinning function is shown in Fig. 1e (solid line). In the deep part of the ice sheet $f_\lambda(z)$ becomes increasingly uncertain as the unknown basal melt rate and f_b become the dominant controls. Here we optimize the model by comparing accumulation rates derived from $f_\lambda(z)$ with those implied by a firn

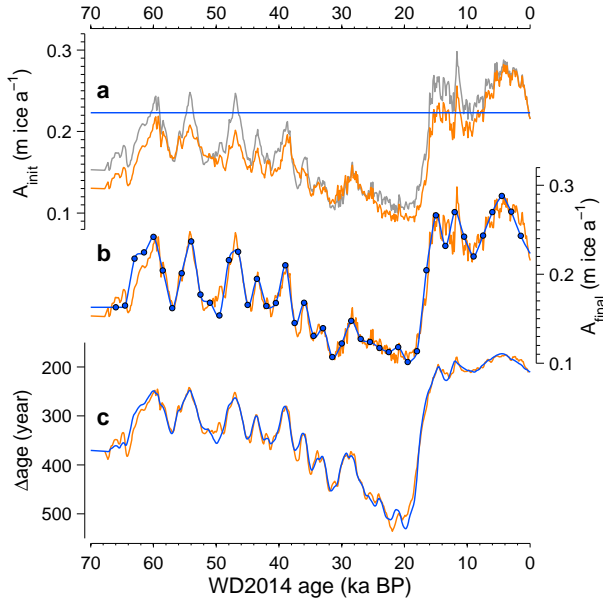


Fig. 2. Reconstructing $A(t)$ and Δ age from $\delta^{15}\text{N}$: the choice of accumulation template. **(a)** $A_{init}(t)$ based on $\lambda(z)$ from the annual layer count (0–31.2 ka BP) and Clausius-Clapeyron scaling of water stable isotope data (34.2–68 ka) in orange; $A_{init} = 0.22 \text{ m a}^{-1}$ in blue; and for comparison the final $A(t)$ solution (Fig. 1b) in grey. For the orange curve we have used the Nye thinning function (i.e., the final ice flow model optimizes the agreement between $A(t)$ obtained from $\lambda(z)$ and from the inverse firm modeling approach. The WD2014 chronology uses the orange $A_{init}(t)$ scenario. **(b)** $A(t)$ found in the inverse firm modeling approach using both $A_{init}(t)$ scenarios; color coding as in panel (a). The function $\xi(t)$ is found as follows. We use control points at 1500 year intervals (blue dots); the algorithm has the freedom to change the value of $\xi(t)$ at each of these points. In between the control points $\xi(t)$ is found via linear interpolation. **(c)** Modeled Δ age using both $A_{init}(t)$ scenarios; color coding as in panel (a).

densification model and the measured $\delta^{15}\text{N}$ of N_2 (Sect. 3.1). While this has little effect on the temperature history reconstruction, it provides an important constraint on calculated basal melt rate, an interesting quantity for ice dynamics studies. Our analysis of basal melt rates and further details of the temperature optimization process and 1-D flow modeling will be presented elsewhere.

3 The gas age-ice age difference (Δ age)

3.1 The WD2014 Δ age reconstruction

The firm densification forward model uses past surface temperature $T(t)$ and accumulation $A(t)$ as model forcings, and provides Δ age(t) and $\delta^{15}\text{N}(t)$ as model output.

For the past 31.2 ka WD has an annual layer counted chronology; for this period the annual layer thickness $\lambda(z)$ provides a constraint on past accumulation rates via $\lambda(z) =$

$A(z) \times f_\lambda(z)$. WD accumulation reconstructed from $\lambda(z)$ is plotted in black in Fig. 1b.

Prior to 31.2 ka we have no such constraint on $A(t)$, and an alternative approach is needed. We use the densification model as an inverse model, where we ask the model to find the $A(t)$ history that minimizes the root mean square deviation between measured and modeled $\delta^{15}\text{N}$, given the $T(t)$ forcing. The $\delta^{15}\text{N}$ data and model fit are shown in Fig. 1c, the $A(t)$ history that optimizes the $\delta^{15}\text{N}$ fit is shown in Fig. 1b (red), and the modeled Δ age is shown in Fig. 1c (orange). The optimal $A(t)$ history is estimated in two steps. First we make an initial estimate $A_{init}(t)$ for the past accumulation history. Second, we adjust the $A(t)$ forcing by applying a smooth perturbation $\xi(t)$ such that $A(t) = [1 + \xi(t)] \times A_{init}(t)$; an automated algorithm is used to find the curve $\xi(t)$ that optimizes the model fit to the $\delta^{15}\text{N}$ data. For the last 31.2 ka we obtain a good agreement between A obtained from $\lambda(z)$ and the modeled $f_\lambda(z)$ (Fig. 1b, black) and A obtained from the inverse method (red). The solution we present here is therefore fully internally consistent, i.e., the A and T histories used in the firm densification modeling are the same as those used in the ice-flow modeling, and they provide a good fit to both the $\delta^{15}\text{N}$ data and borehole temperature data. WD does not suffer from the $\delta^{15}\text{N}$ model-data mismatch that is commonly observed for East Antarctic cores during the glacial period (Landais et al., 2006; Capron et al., 2013).

We base our A_{init} values on $\lambda(z)$ for the past 31.2 ka; prior to that we use the common assumption that A follows $\delta^{18}\text{O}$ (i.e., Clausius-Clapeyron scaling); the fit to the $\delta^{15}\text{N}$ data is optimized for $A = 24.2 \times \exp[0.1263 \times \delta^{18}\text{O}]$. To test the validity of the Clausius-Clapeyron assumption, we additionally run the scenario $A_{init}(t) = 0.22 \text{ m a}^{-1}$ (i.e., constant accumulation at present-day level). The $A(t)$ and Δ age reconstructed under both A_{init} scenarios are similar at multi-millennial timescales (Fig. 2). In the layer counted interval (< 31.2 ka BP), A obtained from $\lambda(z)$ and $\delta^{18}\text{O}$ are significantly coherent at all timescales longer than 3000 years, but not at higher frequencies. This is equivalent to the variability resolved in the $A_{init}(t) = 0.22 \text{ m a}^{-1}$ scenario above. We conclude that the WD $\delta^{15}\text{N}$ data support the idea that A follows $\delta^{18}\text{O}$ on multi-millennial timescales. However, there may not be a strong relationship at timescales less than a few thousand years, as is clear from the abrupt A increase around 12 ka seen in $\lambda(z)$ that is not reflected in $\delta^{18}\text{O}$ (Fig. 1a and b). For consistency between the upper and deeper part of the core we use the Δ age values obtained with the inverse densification model for the entire core.

Recently another $\delta^{15}\text{N}$ -based approach has been suggested that uses Δ depth, rather than Δ age, in reconstructing gas chronologies (Parrenin et al., 2012). This method removes the dependence on $T(t)$, and replaces this by a dependence on the thinning function $f_\lambda(z)$. Note that this method is very successful in the upper part of an ice core where $f_\lambda(z)$ is well constrained, but not very reliable near the base where

$f\lambda(z)$ is highly uncertain. Therefore, the firn densification modeling approach should be considered to be more reliable at WD during Marine Isotope Stage (MIS) 2 through 4. Results from the Δ depth method are plotted in black in Fig. 1c, and generally show good agreement with the firn modeling approach. A notable exception is the 60–65 ka interval, where the Δ depth method overestimates the Δ age due to the fact that we have to compress $\lambda(z)$ strongly in order to fit age constraints derived from DO 18 (Sect. 4.5).

Last, we want to point out that the $\delta^{15}\text{N}$ data support an early warming at WD, as reported recently (WAIS Divide Project Members, 2013). WD $\delta^{15}\text{N}$ starts to decrease around 20.5 kaBP, suggesting a thinning of the firn column. The $\lambda(z)$ (as derived from the layer count) shows that accumulation did not change until 18 kaBP, at which point it started to increase (which would act to increase the firn thickness). The most plausible explanation for the $\delta^{15}\text{N}$ decrease around 20.5 kaBP is therefore an early onset of West-Antarctic deglacial warming, in agreement with increasing $\delta^{18}\text{O}$ around that time. The warming enhances the densification rate of polar firn, thereby decreasing its thickness (e.g., Herron and Langway, 1980).

3.2 Δ age sensitivity study

Besides A and T there are several model parameters that have the potential to influence the model outcome; these are the convective zone (CZ) thickness (Sowers et al., 1992; Kawamura et al., 2006), surface density (ρ_0), and sensitivity to ice impurity content. In this section we evaluate the sensitivity of the model output to all of these parameters. We performed 1000 model runs in which the model parameters were randomly perturbed. The spread in Δ age model results is used to calculate the WD2014 age uncertainty.

Convective Zone thickness. In the WD2014 model run (Sect. 3.1) we use a constant 3.5 m CZ, corresponding to the present-day situation (Battle et al., 2011). In the sensitivity study we vary the CZ by one of two methods: (1) We let the CZ be constant in time; its thickness is set by drawing from a Gaussian distribution with 3.5 m mean, and 3.5 m 2σ width (i.e., 95 % probability of drawing a value in the 0–7 m range). (2) We let the CZ be a function of accumulation rate (Dreyfus et al., 2010), $\text{CZ} = 3.5 + k \times (A - 0.22)$; we draw k from a Gaussian distribution with mean of -10 and a 2σ width of 40 (at an LGM A of 10 cm a^{-1} this gives a CZ of 0–10 m thickness). In both methods, whenever CZ values are selected that are smaller than 0 m, the CZ thickness is set to 0 m instead. For each of the 1000 model runs in the sensitivity study we randomly selected either of the two methods.

Surface density. In the WD2014 model run we use past surface densities (ρ_0) as given by the parameterization of Kaspers et al. (2004). In the sensitivity study we add a constant offset to the Kaspers values, the magnitude of which is drawn from a Gaussian distribution of zero mean and a 2σ

width of 60 kg m^{-3} . This range corresponds to the full range of observed ρ_0 variability in Kaspers et al. (2004).

Past temperatures. Model temperature forcing is constrained by δD and measured borehole temperatures. There is, however, a range of solutions allowed by the borehole temperature and ice-flow model; here we use the upper and lower extremes of this range, determined by Monte Carlo analysis using uncertainties of input variables. The scenarios were chosen to provide the maximum T range for the glacial period rather than for the Holocene, because we are interested in the uncertainty in the methane synchronization (68–31.2 kaBP). In the sensitivity study we use $T(t) = T_{\text{optimal}}(t) + \kappa \times \Delta T(t)$, where T_{optimal} is the forcing used in the WD2014 model run (Fig. 1a), $\Delta T(t)$ is half the difference between the maximum- T and minimum- T scenarios, and κ is drawn from a Gaussian distribution of zero mean and unit 2σ width (giving 95 % probability that $T(t)$ is within the extreme range identified from the borehole, Fig. 3a).

$\delta^{15}\text{N}$ uncertainty. We conservatively adopt an analytical uncertainty of 0.005 ‰ for this data set; in addition, the interpretation of $\delta^{15}\text{N}$ in terms of firn thickness is subject to further uncertainty due to irregular firn layering and the stochastic nature of bubble trapping, as was observed for other atmospheric gases such as CH_4 (Etheridge et al., 1992; Rhodes et al., 2013). For each run of the sensitivity study, we therefore perturb each of the individual $\delta^{15}\text{N}$ data points by adding an offset that is drawn from a Gaussian distribution of zero mean and a 2σ width of 0.015 ‰.

Impurity-enhanced densification. Following recent work we include the possibility that increased glacial impurity loading could have enhanced densification rates (Horhold et al., 2012; Freitag et al., 2013a). We use the mathematical formulation of Freitag et al. (2013a), in which the activation energy of the sintering process is a function of the Ca concentration in the firn. The value of β , the sensitivity to Ca, is drawn from a Gaussian distribution with 0.0015 mean and a 2σ width of 0.0015. The topic of impurity-enhanced densification is discussed in detail in Sect. 3.3.

The A and Δ age scenarios found in the sensitivity study are shown in Fig. 3b and c, respectively. The shaded areas in Fig. 3b and c give the total range of solutions, as well as the $\pm 2\sigma$ and $\pm 1\sigma$ confidence intervals. Note that the total range of solutions will depend on the number of model runs (here 1000), but the position of the $\pm 2\sigma$ and $\pm 1\sigma$ envelopes does not. To investigate the distribution of values, we include histograms of Δ age at 20 ka intervals (Fig. 3d–f). Based on the sensitivity study, we estimate the WD Δ age to be 521 ± 120 years (2σ uncertainty) at the last glacial maximum (LGM, ~ 20 kaBP). The Δ age value of (351 \pm 73 years) at 40 kaBP gives a representative Δ age for MIS 3; Δ age at 60 kaBP is 262 \pm 50 years.

Additionally, we have repeated our Δ age reconstruction using the firn densification physics described by Arnaud et al. (2000), rather than the Herron-Langway description used so

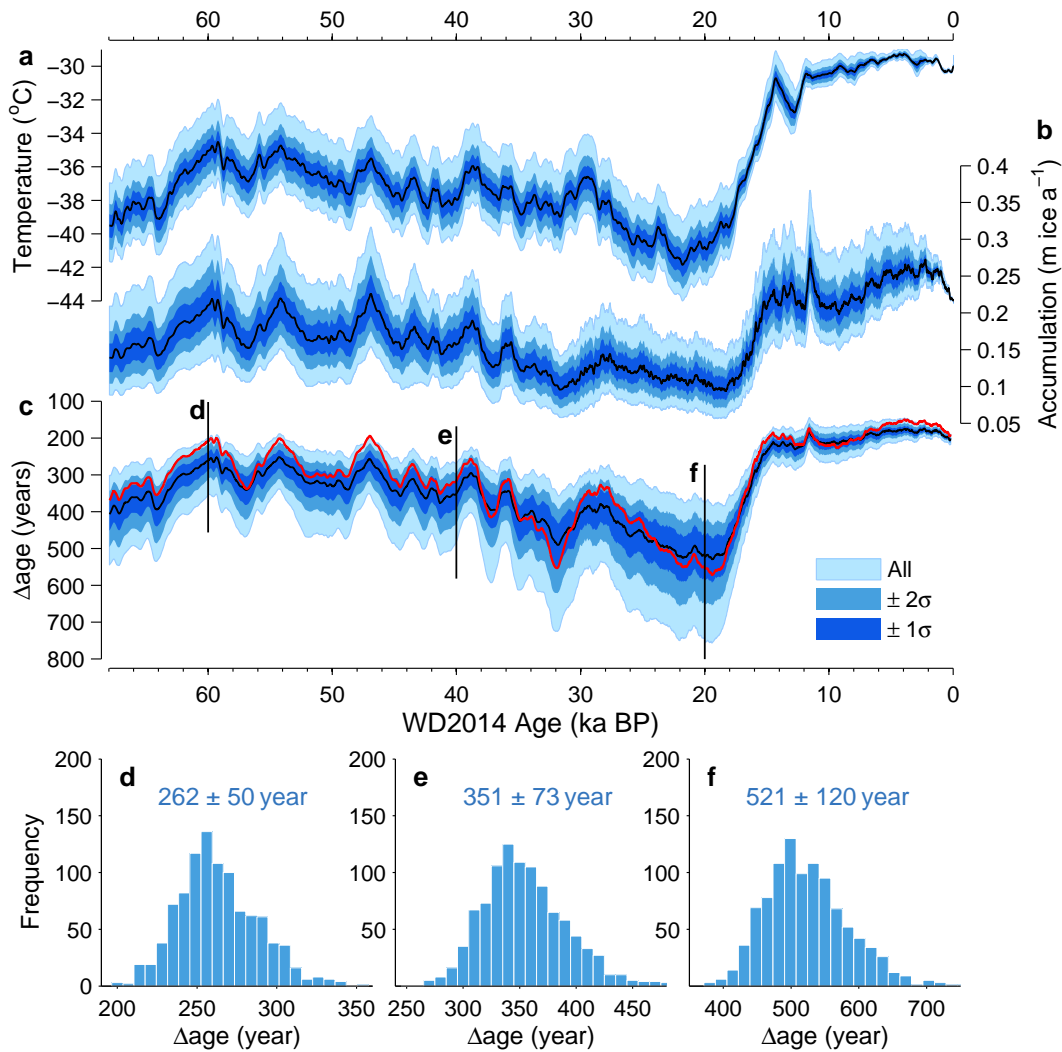


Fig. 3. Δ age sensitivity study. Shades of blue give the confidence intervals as marked; the black curves represent the values used in the WD2014 chronology; the red curve gives an alternative Δ age solution using the Arnaud densification model. **(a)** Temperature forcing of the densification model. **(b)** Reconstructed accumulation rates. **(c)** Reconstructed Δ age; note the reversed scale. Histograms of Δ age distribution are shown for **(d)** 60 ka BP, **(e)** 40 ka BP, and **(f)** 20 ka BP. Distribution mean and 2σ uncertainty bound is stated in each panel.

far; the Arnaud model provides the physical basis for the
 470 commonly used firn densification model of Goujon et al. 485
 (2003). More details on the implementation of the Arnaud
 model are given in Appendix A. Δ age found using the Ar-
 naud model is plotted in red in Fig. 3c. Averaged over the
 475 entire core, Δ age found with the Arnaud model is 19 years
 (about 7%) smaller than Δ age from the Herron-Langway
 model. The Root Mean Square (RMS) difference between
 both solutions is 35 years, corresponding to 0.63 times the 2σ 490
 uncertainty found in the sensitivity study. Both solutions are
 thus found to be in good agreement. The Herron-Langway
 480 approach is preferred because the internally consistent solution
 of temperature, accumulation and ice flow associated with it is in better agreement with borehole temperature data 495
 than the solutions associated with the Arnaud model. Fur-

thermore, the Herron-Langway model is more successful in
 simulating the magnitude of the $\delta^{15}\text{N}$ response to the accu-
 mulation anomaly at 12 ka (not shown), suggesting it has a
 more realistic sensitivity to accumulation variability.

3.3 Impurity softening of firn?

Recent work suggests a link between densification rates and
 impurity content (for which $[\text{Ca}^{2+}]$ is used as a proxy) in polar
 firn (Horhold et al., 2012; Freitag et al., 2013a). Here we
 measured total $[\text{Ca}]$ by ICP-MS, but at WD nearly all Ca is
 in the form of Ca^{2+} . The influence of the impurity sensitivity
 β (see Eq. (A6) in the Appendix) on Δ age at WD is shown in
 Fig. 4. The sensitivity recommended by Freitag et al. (2013a)
 from investigating present-day firn packs is $\beta = 1 \times 10^{-2}$.

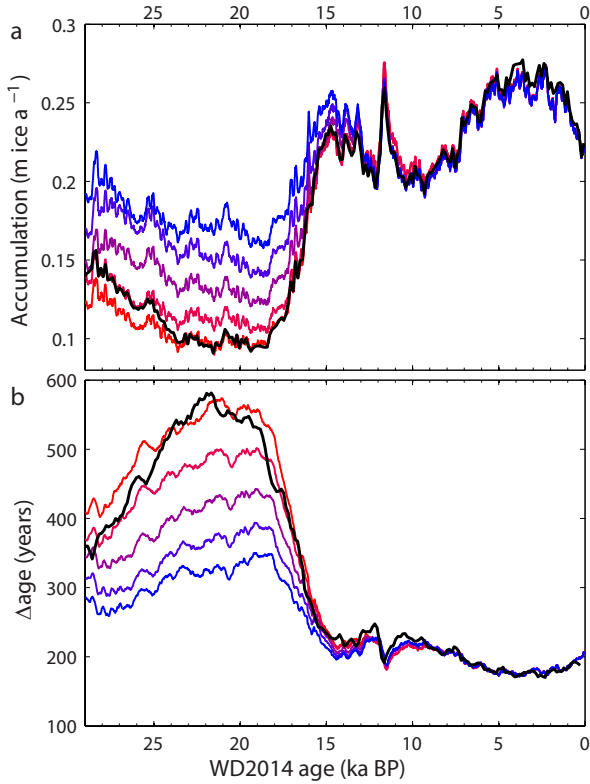


Fig. 4. Impurity enhancement of densification rates at WD. Densification modeling results for (a) accumulation rates, and (b) Δ age. We use Ca sensitivities $\beta = 0$ (red) through $\beta = 1 \times 10^{-2}$ (blue), in steps of 2.5×10^{-3} (shades of deep purple). Black curves give A and Δ age from ice-flow modeling and $\lambda(z)$.

We reconstructed A and Δ age with the firn densification inverse model using five values of β ranging from $\beta = 0$ (red) to $\beta = 1 \times 10^{-2}$ (blue) in steps of 2.5×10^{-3} . Average $[Ca]$ is around 0.8 ng g^{-1} in the early Holocene and around 9 ng g^{-1} in the LGM, about an order of magnitude change. Following Freitag et al. (2013a) we use the total $[Ca]$, rather than non-sea salt Ca. If densification rates are sensitive to impurity loading (large β , blue curves), this results in increased firn compaction during the LGM. The densification model, which is trying to match the $\delta^{15}\text{N}$ data, will compensate by increasing the A forcing, which in turn results in a decreasing Δ age. Hence the model simulations with large β (blue) give a higher A and smaller Δ age.

For the past 31.2 ka we have an independent A estimate from $\lambda(z)$, that we can compare to the solutions from the firn model (Fig. 4, black curve). We also plotted Δ age reconstructed via the Δ depth method of Parrenin et al. (2012). Remarkably, we find consistent solutions only when using a Ca sensitivity $\beta \leq 2.5 \times 10^{-3}$, i.e., less than one quarter of the sensitivity suggested by Freitag et al. (2013a). The best fit to the independent LGM (25–20 ka BP) A and Δ age estimates is obtained for $\beta = 0$. We conclude that WD does not

provide any evidence for impurity (or more specifically: Ca) enhancement of densification rates.

An important caveat is that our model uses 10 year average $[Ca]$ values, and therefore cannot resolve effects of inter-annual layering within the firn. Explicitly modeling the layering would require cm-scale resolution in the dynamical firn model, which is prohibitive from a computational point of view. Furthermore, $[Ca]$ data at the required sub-annual resolution are difficult, if not impossible, to measure for the deepest part of the core where $\lambda(z)$ is below 1 cm a^{-1} . Increased firn layering and enhanced bulk densification affect the firn thickness in a similar manner; both lead to a shallower lock-in depth, and thereby a reduced $\delta^{15}\text{N}$. Therefore, in order to reconcile our WD results with the impurity-hypothesis of Horhold et al. (2012), one would need to invoke a strong reduction in LGM firn layering relative to the present day to compensate for the impurity-driven increase in bulk densification rates. Recent work on the EDML core suggests that firn density layering may have been more pronounced during glacial times (Bendel et al., 2013); including firn layering is therefore likely to only exacerbate the problem.

Work on present-day firn has provided support for firn softening by impurity loading (Horhold et al., 2012; Freitag et al., 2013a,b). More work is needed to understand how densification rates are linked to impurity content in a mechanistic, rather than purely empirical way. Perhaps such a microscopic description could provide an explanation why firn densification rates at WD, to first order, do not appear to be affected by order-of-magnitude variations in $[Ca]$ loading. One possible explanation could be that densification rates are controlled by some parameter that co-varies with Ca in modern day firn, yet does not change appreciably over glacial cycles (Fujita et al., 2014).

4 Constructing the WAIS Divide WD2014 chronology

4.1 Annual layer count (0–31.2 ka)

A first layer counted chronology for the upper 2800 m of the WD core based on electrical conductivity measurements (ECM), named WDC06A-7, was presented by WAIS Divide Project Members (2013). The WAIS chronology presented in this work, WD2014, uses an updated layer count for the upper 2850 m, based on new data and analyses that have become available since publication of WDC06A-7. These updates are:

1. A reassessment of the dating in the upper 577 m (2.4 ka) using high-resolution multi-parameter chemistry data in combination with automated layer detection algorithms (Winstrup et al., 2012);
2. A reassessment of the dating between 577–2300 m; (2.4–15.3 ka) using high resolution multi-parameter chemistry data in combination with ECM;

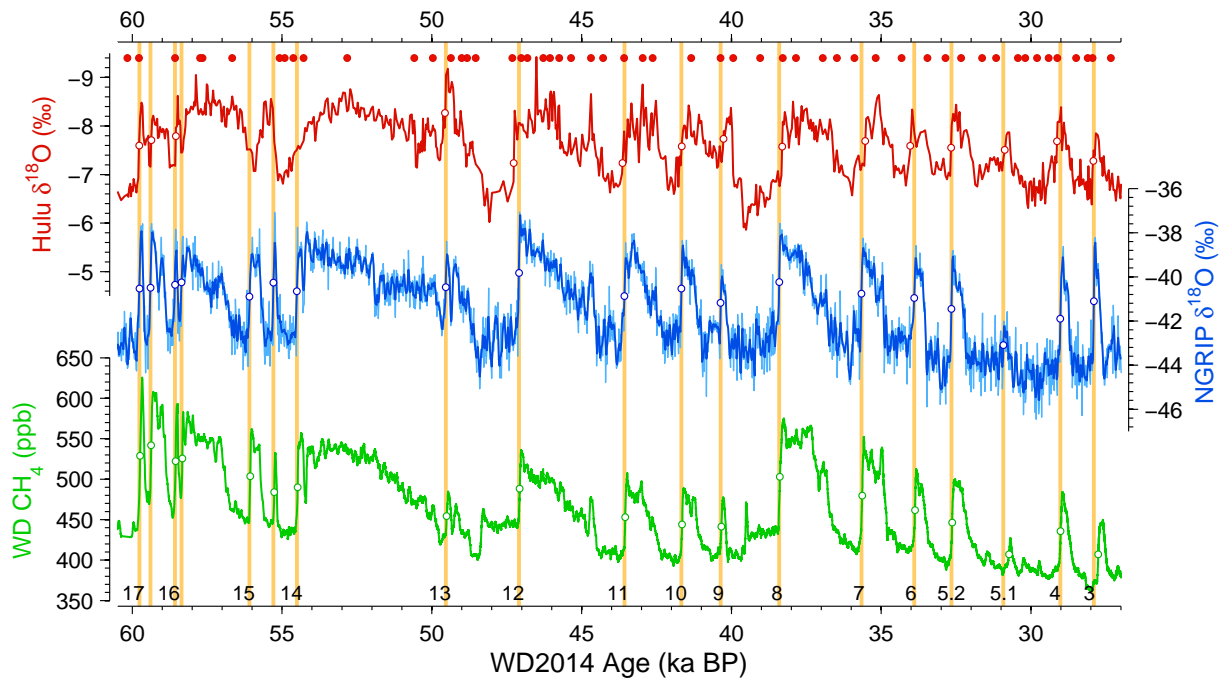


Fig. 5. Records of abrupt DO climate variability (a) Revised Hulu cave speleothem $\delta^{18}\text{O}$ record on Hulu chronology with U/Th ages above the time series (red dots) (b) NGRIP ice core $\delta^{18}\text{O}$ on $1.0063 \times \text{GICC05}$ chronology, (c) WD CH_4 on WD2014. DO numbering is given in the bottom of the figure following Rasmussen et al. (2014).

3. A reassessment of the dating between 2300–2800 m; (15.3–29.5 ka) using ECM and dust particle measurements, with the ECM having increasing importance with depth;
4. An extension of the annual layer dating between 2800–2850 m; (29.5–31.2 ka) using ECM.

Details on the updated WD layer count and the layer counting methodology are presented in part 1 of the WD2014 papers.

4.2 Methane synchronization (31.2–68 ka)

For the deep part of the core where an annual layer count is not available we date WD by synchronization to well-dated Northern Hemisphere (NH) climate records of abrupt DO variability using the WD record of globally well-mixed CH_4 (Fig. 5). This process consists of several steps:

1. Determine the midpoint of the abrupt DO transitions in WD CH_4 , NGRIP $\delta^{18}\text{O}$ and Hulu speleothem $\delta^{18}\text{O}$.
2. Assign a gas age to the WD CH_4 tie-points (i.e., the DO transitions).
3. Apply the WD Δage (Sect. 3) to find the corresponding ice age at the depth of the CH_4 tie-points.
4. Interpolate between the ice age constraints to find the WD depth-age relationship.

5. Redo the Δage calculations on the new ice age scale.

6. Repeat steps 3–5 iteratively until the depth-age relationship is stable within 1 year. At WD this happened after 3 iterations.

These steps are described in more detail in the following sections.

4.3 Establishing the midpoint in abrupt DO transitions

The procedure for determining the midpoint of the abrupt DO warming transitions is depicted in Fig. 6. For each of the transitions we manually determine pre-event and post-event averages, as indicated by the orange lines. The averaging time is set to 150 and 50 years for stadial and interstadial periods, respectively; this difference in duration is used because (i) several of the interstadials are of short duration, and (ii) Greenland $\delta^{18}\text{O}$ is more variable during stadial climates, requiring longer averaging. For DO 16.1, the duration of the pre-event stadial baseline climate was shorter than 150 years, and the averaging time was reduced to 100 years (Fig. 6).

After determining the pre- and post-event averages, we use linear interpolation of the time series to find the time at which the variable of interest had completed 25, 50 and 75 % of the total transition (Fig. 6). We use the 50 % marker (red) as the midpoint of the transition, which is used in the methane synchronization. The 25 % and 75 % markers (blue) are used as the $\pm 1\sigma$ uncertainty estimate. In rare cases the time series

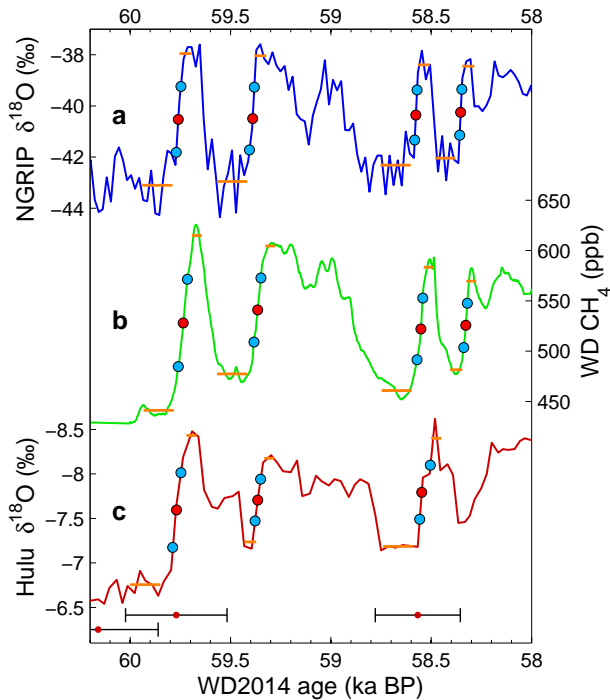


Fig. 6. Determining the midpoint for the abrupt warming phases of (from oldest to youngest) DO 17.2, 17.1, 16.2 and 16.1 in (a) NGRIP $\delta^{18}\text{O}$ (on $1.0063 \times \text{GICC05}$), (b) WD CH_4 (on WD2014) and (c) Hulu $\delta^{18}\text{O}$ with U/Th ages beneath the time series (red dots with error bars). Red dots give the midpoint (50%) of the DO transition, the blue dots give the 25% and 75% marks in the DO transitions. The DO transition at 58.35 ka was not used in Hulu where it is much more gradual than in the other records (possibly because calcite sampling was not perfectly perpendicular to the stalagmite isochrones, or because growth rates were variable in between the U/Th ages).

contain inversions within the transitions that lead to ambiguity in the timing of the markers; for these events we find the markers using a monotonic spline fit to the data.

The midpoints of abrupt interstadial terminations were determined in the same fashion (WD CH_4 and NGRIP only). Tables 1 and 2 give the results for NH warming, and NH cooling, respectively.

4.4 Synchronizing WD to a NGRIP-Hulu hybrid chronology

Abrupt DO variability is expressed clearly in a great number of NH climate records (Voelker, 2002). For the purpose of methane synchronization, our interest is in high-resolution records that express the abrupt DO events very clearly, and are furthermore exceptionally well dated. We here use a combination of two such NH records (Fig. 5), namely the Greenland NGRIP $\delta^{18}\text{O}$ record (NGRIP community members, 2004), and a refined version of the Hulu Cave speleothem $\delta^{18}\text{O}$ record (Edwards et al., in review;

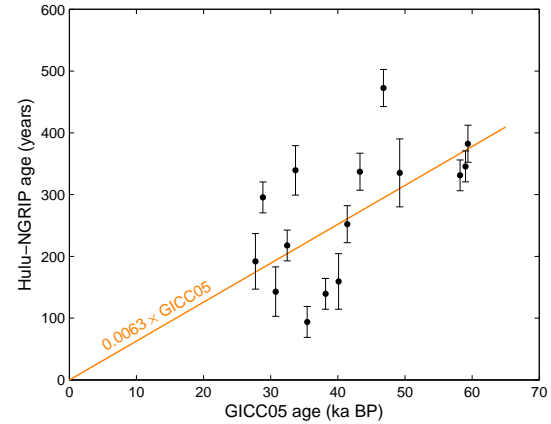


Fig. 7. Hulu-NGRIP age offset at the midpoint of the DO $\delta^{18}\text{O}$ transitions. The error bars denote the root sum square of the midpoint determination uncertainty in NGRIP and Hulu $\delta^{18}\text{O}$ (Table 1). The GICC05 ages are placed on the BP 1950 scale, rather than the b2k scale (years prior to 2000 C.E.).

Reimer et al., 2013; Southon et al., 2012) with improved resolution and additional dating constraints (see Wang et al., 2001, for the original, lower resolution Hulu $\delta^{18}\text{O}$ record). The DO events are resolved most clearly in the NGRIP $\delta^{18}\text{O}$ record, which is available at 20 year resolution. We use the GICC05-modelext chronology for this core, which is based on annual layer counting back to 60 ka BP, and on ice flow modeling for ice older than 60 ka (Rasmussen et al., 2006; Svensson et al., 2006; Wolff et al., 2010). While annual layer counting provides accurate relative ages (e.g., the duration of DO interstadials), it provides relatively inaccurate absolute ages due to the cumulative nature of counting uncertainty (Table 1). The refined Hulu $\delta^{18}\text{O}$ record also shows the abrupt DO events in high temporal resolution (Fig. 6). The speleothem chronology is based on U/Th radiometric dating, providing much smaller uncertainty in the absolute ages than GICC05 (Table 1). The reason for selecting this record over other speleothem records is the large number of U/Th dates, the low detrital Th at the site, and the high sampling resolution of the $\delta^{18}\text{O}$ record (Wang et al., 2001). In the Hulu data, as in other records of DO variability, the interstadial onsets are more pronounced and abrupt than their terminations. We therefore only use the timing of the former as age constraints, as they can be established more reliably. The onset of NH interstadial periods as expressed in Hulu $\delta^{18}\text{O}$ is given in Table 1.

In both the NGRIP and Hulu Cave $\delta^{18}\text{O}$ records we have determined the ages of the midpoints of the DO transitions (Fig. 6; Table 1); a plot of their difference (Hulu age minus NGRIP age) is shown in Fig. 7, where the error bars denote the root sum square of the NGRIP and Hulu midpoint determination uncertainty (Sect. 4.3). The Hulu ages are systematically older than the NGRIP ages, and the age

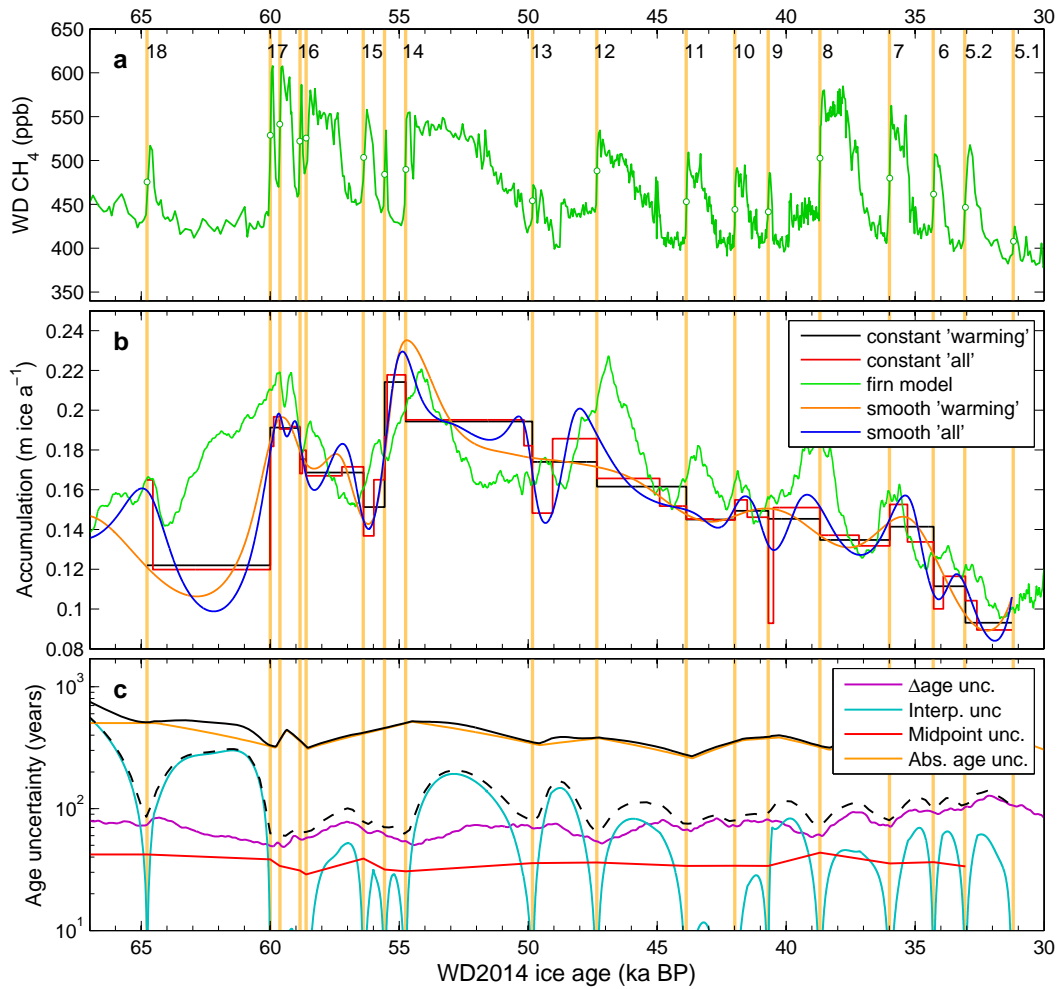


Fig. 8. Interpolating between the CH_4 age constraints. **(a)** WD discrete CH_4 record with the abrupt stadal-interstadial transitions marked. DO numbering given at the top of the panel. **(b)** Different annual layer thickness scenarios, converted to an accumulation rate for comparison to the $\delta^{15}\text{N}$ -based firn model reconstructions. The interpolation strategy is to use either constant accumulation rates between tie-points (“constant”), or a smoothly varying $\lambda(z)$ (“smooth”); the age constraints used are either only the NH warming events (“warming”), or both the NH warming and cooling events (“all”). **(c)** Estimated 2σ uncertainties in the WD2014 chronology due to Δage , choice of interpolation scheme, midpoint detection, and the absolute age constraints used in the synchronization. Total absolute ice age uncertainty plotted in solid black; relative age uncertainty (i.e., with absolute age uncertainty in the Hulu-GICC05 master chronology withheld) plotted in dashed black.

Table 1. Overview of CH₄ tie-points for NH warming events.

	NGRIP				Hulu			WD			
	Depth (m)	Age (year bp)	Age uncert. (year)	Midpoint (year)	Hulu age (year bp)	Age uncert. (year)	Midpoint (year)	Depth (m)	Gas age (year bp)	Ice age (year bp)	Midpoint (year)
YD-PB	1490.89	11 619	98	23				1983.02	11 542	11 740	33
OD-YD	1604.05	14 628	185	15				2259.39	14 576	14 804	29
DO 2	1793.51	23 303	597	16				2632.08	23 988	24 467	30
DO 3	1869.00	27 728	832	12	27 922	95	39	2755.74	27 749	28 144	19
DO 4	1891.27	28 838	898	14	29 134	92	21	2797.92	28 993	29 397	23
DO 5.1	1919.48	30 731	1023	11	30 876	255	37	2848.36	30 735	31 185	22
DO 5.2	1951.66	32 452	1132	15	32 667	236	21	2885.44	32 631	33 028	17
DO 6	1974.48	33 687	1213	19	34 034	337	36	2913.01	33 874	34 270	18
DO 7	2009.62	35 437	1321	16	35 532	299	20	2958.64	35 636	35 979	20
DO 8	2069.88	38 165	1449	13	38 307	155	19	3021.37	38 381	38 674	33
DO 9	2099.50	40 104	1580	13	40 264	241	42	3066.52	40 332	40 681	19
DO 10	2123.98	41 408	1633	14	41 664	310	27	3094.17	41 643	41 976	18
DO 11	2157.58	43 297	1736	17	43 634	144	26	3130.44	43 544	43 861	15
DO 12	2221.96	46 794	1912	21	47 264	153	20	3195.25	47 064	47 336	16
DO 13	2256.73	49 221	2031	17	49 562	251	52	3237.65	49 506	49 842	19
DO 14	2345.39	54 164	2301	11				3311.09	54 480	54 744	13
DO 15.1	2355.17	54 940	2349	16				3322.24	55 261	55 560	11
DO 15.2	2366.15	55 737	2392	26				3329.72	56 063	56 377	14
DO 16.1	2398.71	57 988	2498	11				3350.44	58 328	58 611	9
DO 16.2	2402.25	58 210	2510	12	58 545	226	22	3352.59	58 552	58 847	14
DO 17.1	2414.82	59 018	2557	15	59 364	366	18	3360.02	59 364	59 629	17
DO 17.2	2420.35	59 386	2573	15	59 772	254	23	3363.42	59 735	59 999	25
DO 18	2465.84	64 049	2611	30				3388.73	64 428	64 776	15

Table 2. Overview of CH₄ tie-points for NH cooling events.

	NGRIP				WD			
	Depth (m)	Age (year bp)	Age uncert. (year)	Midpoint (year)	Depth (m)	Gas age (year bp)	Ice age (year bp)	Midpoint (year)
BA-YD	1524.20	12 775	136	81	2096.61	12 764	12 987	53
DO 3	1861.90	27 498	822	52	2747.24	27 516	27 905	41
DO 4	1882.60	28 548	887	17	2787.94	28 679	29 089	61
DO 5.1	1916.50	30 571	1010	70	2845.38	30 620	31 068	54
DO 5.2	1939.70	31 992	1108	13	2875.86	32 169	32 580	67
DO 6	1964.50	33 323	1192	37	2905.55	33 508	33 891	60
DO 7	1990.60	34 703	1286	13	2939.09	34 897	35 289	48
DO 8	2027.40	36 571	1401	21	2986.58	36 776	37 163	32
DO 9	2095.50	39 905	1572	42	3063.79	40 131	40 482	25
DO 10	2112.50	40 917	1621	44	3083.89	41 150	41 504	44
DO 11	2135.70	42 231	1685	27	3110.76	42 472	42 816	70
DO 12	2171.20	44 308	1783	41	3149.89	44 562	44 899	47
DO 13	2242.90	48 440	1996	27	3226.93	48 720	49 060	20
DO 14	2261.50	49 552	2052	20	3243.02	49 839	50 172	64
DO 15.1	2353.70	54 850	2339	18	3321.15	55 171	55 465	14
DO 15.2	2359.90	55 369	2370	55	3326.47	55 693	55 981	45
DO 16.1	2375.90	56 555	2435	49	3337.98	56 886	57 219	73
DO 16.2	2400.60	58 123	2508	15	3351.80	58 464	58 756	9
DO 17.1	2406.50	58 544	2530	35	3355.54	58 888	59 154	60
DO 17.2	2417.80	59 257	2570	18	3362.26	59 605	59 865	23
DO 18	2462.10	63 810	2611	14	3387.28	64 187	64 551	33

difference increases going further back in time. Note that the Hulu-NGRIP age difference is smaller than the stated GICC05 counting uncertainty (832 to 2573 years), but larger than the Hulu age uncertainty (92 to 366 years). A linear fit through these data, forced to intersect the origin, is given by $0.0063 \times \text{GICC05 age}$, suggesting that the GICC05 annual layer count on average misses 6.3 out of every 1000 layers.

Because of this observation we use a linearly scaled version of the GICC05 chronology ($\text{GICC05} \times 1.0063$) as the target chronology for methane synchronization. This approach has several advantages. First, it respects both the superior relative ages (i.e., interval durations) of GICC05, as well as the superior absolute ages of the Hulu chronology. Second, it is very simple to convert between the WD2014 and GICC05

chronologies (CH₄-synchronized section of the chronology only); one simply needs to divide WD2014 ages by 1.0063 (and add 50 years to convert to the b2k reference date). Third, it still allows for direct synchronization of WD CH₄ to the NGRIP δ¹⁸O record, providing more tie-points than direct synchronization to the Hulu record would. Note that the GICC05 × 1.0063 target chronology respects the Hulu age constraints in an average sense only; the age of individual events differs between Hulu and our target chronology by up to 180 years. Our approach therefore represents only a first order correction of a growing offset between GICC05 and Hulu; non-linear temporal changes in the counted dating error may exist from one tie point to the next (Fleitmann et al., 2009).

The exercise of finding the transition midpoints and determining the GICC05-Hulu scaling factor was performed by two of the authors (J.P.S. and C.B.), independently of each other. The scaling factors obtained were 1.0063 and 1.0064, respectively, showing that, to first order, this result is insensitive to (subjective) judgment in identifying the transitions. The difference between the Hulu ages and 1.0063 × GICC05 ages are all within the stated Hulu 2σ dating error (Table 1). Consequently, our chronology is not in violation of any Hulu constraint as it respects the Hulu 2σ error at all of the tie points. In deriving the scaling we have assumed that the abrupt DO transitions observed in NGRIP and Hulu are simultaneous, which is not necessarily true. The variations in monsoon intensity represented by Hulu δ¹⁸O are commonly explained by meridional movement of the inter tropical convergence zone (ITCZ) and tropical rainfall belts (Wang et al., 2001, 2006; Kanner et al., 2012); modeling work suggests such atmospheric readjustments occur on decadal timescales in response to NH high-latitude forcing (Chiang and Bitz, 2005; Broccoli et al., 2006; Cvijanovic and Chiang, 2013). Moreover, CH₄ emission changes are near-synchronous with Greenland δ¹⁸O variations, which they lag by only a few decades on average (Huber et al., 2006; Baumgartner et al., 2014; Rosen et al., 2014). Since both CH₄ emissions and Hulu δ¹⁸O are closely linked to tropical hydrology, timing lags between NGRIP and Hulu are also expected to be on decadal time scales. The uncertainty in the NGRIP-Hulu phasing is therefore probably small (decadal) relative to the correction we apply (up to 400 years).

Rather than synchronizing WD CH₄ to Greenland CH₄ records, we have chosen to synchronize directly to NGRIP δ¹⁸O, which varies in phase with CH₄ (but with a nearly constant time lag). We let the midpoint in the CH₄ transitions lag the midpoint in the NGRIP δ¹⁸O transition by 25 years, as suggested by studies of Greenland δ¹⁵N-CH₄ phasing (Huber et al., 2006; Baumgartner et al., 2014; Rasmussen et al., 2013; Kindler et al., 2014; Rosen et al., 2014). The rationale behind this approach is threefold. First, throughout MIS 3 the NGRIP δ¹⁸O record has both better precision and higher temporal resolution than any available Greenland CH₄ record (Baumgartner et al., 2014; Brook et al., 1996;

Blunier et al., 2007). Second, the dating of Greenland gas records depends on the highly variable Δage function, which is not equally well constrained for all DO events (Schwander et al., 1997; Rasmussen et al., 2013). This reliance on Greenland Δage would introduce an additional source of uncertainty. The NGRIP δ¹⁸O record, on the other hand, is accurately dated through the GICC05 layer count. Third, Greenland CH₄ records are more strongly impacted by firn smoothing than the WD CH₄ record, because glacial accumulation is lower in Greenland (Greenland glacial Δage is about 2–3 times as high as WD Δage during that time). In summary, our approach circumvents the uncertainties associated with using Greenland CH₄ as an intermediary. Or to state this another way: the uncertainty in the phasing between CH₄ and Greenland δ¹⁸O is smaller than the uncertainty in the Greenland Δage.

4.5 Interpolation between age constraints

We can assign a gas age to each of the depths where an abrupt WD CH₄ transitions occurs; we do this for DO 4.1 through DO 18, i.e., the events prior to 31.2 kaBP (the onset of the WD layer count). The gas age we assign is equal to 1.0063 times the GICC05 age for the same event, with 25 years subtracted to account for the slight CH₄ lag behind Greenland δ¹⁸O. By adding Δage (Sect. 3) to this gas age we assign an ice age. These assigned ages are printed in boldface in Tables 1 and 2.

To obtain a continuous depth-age relationship between these ice age constraints, we have to apply an interpolation strategy. This task amounts to estimating the annual layer thickness λ(z) along the deep part of the core. The simplest approach is to assume a constant accumulation rate in between the age constraints; this is shown in Fig. 8b for the case where we use the age constraints from NH warming events only (black), or the age constraints from both NH warming and cooling events (red). The disadvantage of this approach is that it results in discontinuities in λ(z) (the first derivative of the depth-age relationship), which we consider highly unrealistic. A more realistic approach is therefore to assume that λ(z) is continuous and smooth (Fudge et al., 2014); Fig. 8b shows two scenarios in which we use a spline function to estimate λ(z), where again we have applied age constraints from NH warming events only (orange) or age constraints from both NH warming and cooling events (blue).

For comparison, past *A* obtained from the firn densification model (Sect. 3) is plotted in green (Fig. 8b). While the δ¹⁵N-based *A* follows the synchronization-based *A* estimates broadly, the millennial-scale details do not agree. We want to point out that this is not unexpected, since both methods have their imperfections. In particular, any errors in the (stretched) GICC05 age model or in our modeled thinning function $f_{\lambda}(z)$ will strongly impact the synchronization-based *A* estimates in Fig. 8b. The discrepancy is pronounced between 60–65 ka, where we have to strongly reduce λ(z)

in order to fit the age constraint(s) from DO 18, while $\delta^{15}\text{N}$ provides no evidence for low A during this interval.

For the WD2014 chronology we have applied the smooth $\lambda(z)$ interpolation scheme using all age constraints (i.e., both NH warming and cooling events). The midpoint detection uncertainty is comparable for all events, and systematically smaller at the start of interstadial periods than at the terminations (Tables 1 and 2). For short interstadials (e.g., DO 9) this leads to a large relative uncertainty in the event duration, and thereby a large uncertainty in the implied accumulation rates (Fig. 8b). We force the interpolation to fit all NH warming constraints perfectly, yet relax this requirement for NH cooling constraints to prevent large swings in $\lambda(z)$ for the short duration events. The WD2014 chronology fits the NH warming and NH cooling age constraints with a 0 and 16 year root mean square offset, respectively. Because the duration of (inter-)stadial periods is well constrained in the layer-counted GICC05 chronology, using both the NH warming and NH cooling tie-points results in a more robust chronology. The duration of (inter-)stadial periods is 0.63% longer in WD2014 than in GICC05, which is well within the stated GICC05 counting error of 5.4% (31.2–60 ka interval).

4.6 Age uncertainty

The age uncertainty we assign to the deep part (> 2850 m) of the WD2014 chronology has four components.

The first source of uncertainty is the Δage calculation; we use the 2σ uncertainty obtained in the Δage sensitivity study (Sect. 3.2). The second source of uncertainty is the choice of interpolation scheme used to obtain a continuous chronology; here we use the standard deviation between the 4 different interpolation schemes of Fig. 8b) as an uncertainty estimate. The third source of uncertainty is the difficulty in determining the timing of the abrupt events in the time series; we use the uncertainty in the midpoint evaluation (root sum square of WD CH_4 and NGRIP $\delta^{18}\text{O}$ estimates). The last source of uncertainty is the age uncertainty in the hybrid NGRIP-Hulu chronology that we synchronize to. We use the stated Hulu age uncertainty, plus 50 years to account for possible leads or lags in the NGRIP-Hulu $\delta^{18}\text{O}$ phasing, plus the absolute value of the offset between the Hulu ages and the $1.0063 \times \text{GICC05}$ ages. For DO events where we do not have reliable Hulu age estimates (Table 1), we set the uncertainty to the Hulu age uncertainty of the nearest event, plus the uncertainty in the interval duration specified by the GICC05 layer count. For example, for DO 14 we do not have a reliable Hulu age estimate, and we use the Hulu age uncertainty of DO 16.2 (226 years) plus the uncertainty in the DO 14 to DO 16.2 interval duration on GICC05 (209 years), giving a total of $226 + 209 = 435$ years.

The uncertainties (2σ values) are plotted in Fig. 8c (log scale). We assume these four uncertainties to be independent, and use their root sum square as the total uncertainty estimate on the WD2014 ice age scale (Fig. 8c, black curve). Note that

the fourth source of uncertainty is only relevant when considering absolute ages; when evaluating relative ages (e.g., between WD ice and WD gas phase, or between WD and NGRIP) this last contribution does not need to be considered. For the deepest WD ice (3404 m depth) we thus find an age of 67.7 ± 0.9 kaBP.

5 Discussion

While the WAIS Divide ice core does not extend as far back in time as deep cores from the East Antarctic plateau, its relatively high temporal resolution (due to the high snow accumulation rate) makes it an ice core of great scientific value. WD accumulation rate during the LGM ($\sim 10 \text{ cm a}^{-1}$ ice equivalent) is still higher than the present-day accumulation rate at the EPICA (European project for ice coring in Antarctica) Dronning Maud Land core (7 cm a^{-1}), which is generally considered a high-accumulation core (EPICA Community Members, 2006). With 68 ka in 3404 m of core, the core average λ is 5 cm a^{-1} ; at the onset of the last deglaciation (18 kaBP) λ is around 4 cm a^{-1} ; near the bed λ is around 0.4 cm a^{-1} . This high temporal resolution provides the opportunity for obtaining very detailed climatic records.

High accumulation rates also result in a small Δage . Figure 9 compares Δage between several Antarctic cores (note the logarithmic scale). Δage at WD is approximately one third of the Δage at EPICA DML (EDML) and Talos Dome (TALDICE), and one tenth of the Δage at EPICA Dome C (EDC), Vostok and Dome Fuji. Because the uncertainty in the Δage (or Δdepth) calculation is typically on the order of 20%, a smaller Δage allows for a more precise inter-hemispheric synchronization with Greenland ice core records using CH_4 . The small WD Δage uncertainty during MIS 3 allows investigation of the phasing of the bipolar seesaw (Stocker and Johnsen, 2003) at sub-centennial precision (WAIS Divide Project Members, in review).

In comparing the shape of the Δage profiles, there are some interesting differences (Fig. 9). It is important to realize that not all the Δage histories shown were derived in the same way; WD and Dome Fuji Δage were derived using densification models, and the other four were derived using the Δdepth approach (Parrenin et al., 2012) and a Bayesian inverse method that includes a wide range of age markers (Veres et al., 2013). We will therefore focus on comparing the WD and Dome Fuji results. Δage at WD shows more pronounced variability than at Dome Fuji, particularly during MIS 3. The reason is that at Dome Fuji the glacial firn pack is about 4000 years old, and consequently the firn column integrates over 4000 years of climate variability, thereby dampening the Δage response to millennial scale climatic variability. At WD the glacial firn layer is only about 350 years old, and therefore the firn is in near-equilibrium with the millennial scale climate variations. This difference in response time is also obvious during the deglaciation, where WD Δage

transitions from glacial to interglacial values between 18–14.5 ka BP, while Dome Fuji takes more time (18–10 ka BP). Surprisingly, EDML Δ age does not show a strong deglacial Δ age response, unlike all the other cores.

The relatively small Δ age at WAIS Divide also allows for precise investigation of the relative timing of atmospheric greenhouse gas variations and Antarctic climate (Barnola et al., 1991; Pedro et al., 2012; Caillon et al., 2003; Parrenin et al., 2013; Ahn et al., 2012). Recent works suggest that during the last deglaciation the rise in atmospheric CO_2 lagged the onset of pan-Antarctic warming by approximately 0 to 400 years (Pedro et al., 2012; Parrenin et al., 2013). This Antarctic warming around 18 ka BP is presumably driven by the bipolar seesaw, as it coincides with a reduction in Atlantic overturning circulation strength as seen in North-Atlantic sediment records (McManus et al., 2004). The WD Δ age at 18 ka (gas age) is 515 ± 91 years (2σ), much smaller than at central East-Antarctic sites such as EPICA Dome C, where Δ age is approximately 3850 ± 900 years (Veres et al., 2013, with the Δ age uncertainty taken to be the difference between the gas age and ice age uncertainties). The precision with which one can determine the relative phasing of climatic (i.e., $\delta^{18}\text{O}$ of ice) and atmospheric signals is set by the uncertainty in Δ age (or equivalently, the uncertainty in Δ depth). High resolution WD records of CO_2 and CH_4 (Marcott et al., 2014) place the onset of the deglacial rise in the atmospheric mixing ratio of these greenhouse gases on the WD2014 chronology at 18,010 and 17,820 years BP, respectively. However, evaluating the relative phasing of CO_2 and Antarctic climate is complicated by the observation of asynchronous deglacial warming across the Antarctic continent (WAIS Divide Project Members, 2013). Attempts to capture the climate- CO_2 relationship in a single lead-lag value may be an oversimplification of deglacial climate dynamics.

An important next step will be to synchronize the WD chronology with other Antarctic cores via volcanic matching and other age markers (e.g., Severi et al., 2007; Sigl et al., 2014a). Because of the annual layer count and possibility of tight synchronization to Greenland ice cores, WD could contribute to an improved absolute dating of Antarctic cores, as well as improved cross-dating between cores. Such cross-dating could help inform the WD chronology as well, particularly in the deepest part of the core where the ice is potentially highly strained, as suggested by the interpolation difficulties in the 60–65 ka interval (Fig. 8b). With a synchronized chronology, WD could improve the representation of West Antarctic climate in Antarctic ice core stacks (Pedro et al., 2011; Parrenin et al., 2013), and provide a more refined pan-Antarctic picture of the climate- CO_2 relationship.

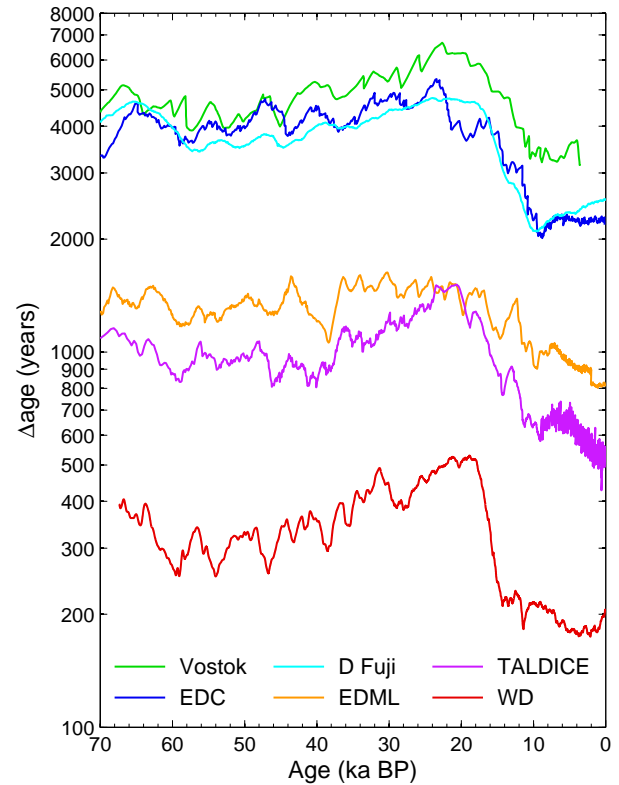


Fig. 9. Comparison of Δ age for different Antarctic cores, plotted on the gas-age scale. Dome Fuji Δ age from Kawamura et al. (2007); WD from Sect. 3; all others from Bazin et al. (2013); Veres et al. (2013).

6 Summary and conclusions

We have presented a first chronology for the deep (> 2850 m) section of the WAIS Divide ice core, which is based on stratigraphic matching to Greenland ice cores using globally well-mixed methane. We use a dynamical firn densification model constrained by $\delta^{15}\text{N}$ data to calculate past Δ age, and find that Δ age was smaller than 525 ± 120 years for all of the core. Using high resolution WD records of atmospheric CH_4 , we synchronize WD directly to Greenland NGRIP $\delta^{18}\text{O}$ for the abrupt onset and termination of each of the DO interstadials. To each event we assign an age corresponding to 1.0063 times its GICC05 age, which brings the ages in agreement with the high-resolution U/Th-dated Hulu speleothem record. The uncertainty in the final chronology is based on the uncertainties in: (i) the Δ age calculations, as evaluated with a sensitivity study, (ii) the interpolation strategy, as evaluated by comparing four different interpolation methods, (iii) determining the timing of events in the different time series, and (iv) the ages of the hybrid NGRIP-Hulu chronology we are synchronizing to.

Due to the combination of a small Δ age and a high-resolution methane record, the WAIS Divide ice core can be

synchronized more precisely to Greenland records than any other Antarctic core to date. This is important when investigating inter-hemispheric climate relationships such as the bipolar seesaw. The small WD Δage furthermore provides valuable opportunities for precise investigation of the relative phasing of atmospheric greenhouse gas variations and Antarctic climate.

Appendix A

Densification physics

The densification rates used in this work are based on the empirical steady state model by Herron and Langway (1980) (the H-L model). We use the H-L model with minor modifications that allow it to be run dynamically (i.e., with time-variable T and A), and to include the softening effect of impurities following Freitag et al. (2013a). The H-L model divides the firn column in two stages, separated at the critical density $\rho_c = 550 \text{ kg m}^{-3}$, occurring at the critical depth z_c .

For the upper firn ($\rho \leq \rho_c$, stage 1), the densification rates are given by:

$$\frac{d\rho}{dt} = k_1 A (\rho_{\text{ice}} - \rho) \quad (\text{A1})$$

with

$$k_1 = 11 \exp\left(-\frac{E_1}{RT}\right) \quad (\text{A2})$$

where $E_1 = 10.16 \text{ kJ mol}^{-1}$ is the activation energy for stage 1, and R the universal gas constant. Because both the sinking velocity of deposited layers ($w = dz/dt$) and the densification rate scale linearly with A , the resulting density-depth profile $\rho(z)$ in stage 1 becomes independent of A , and sensitive to T variations only.

For the deeper firn ($\rho > \rho_c$, stage 2), we use Eq. (4c) from Herron and Langway (1980), which was first derived by Sigfús J. Johnsen. This equation gives the densification rate in terms of overburden load, which allows the model to be run dynamically. The stage 2 densification rates are given by:

$$\frac{d\rho}{dt} = k_2 \frac{(\sigma_z - \sigma_{z_c})(\rho_{\text{ice}} - \rho)}{\ln[(\rho_{\text{ice}} - \rho_c)/(\rho_{\text{ice}} - \rho)]} \quad (\text{A3})$$

with

$$k_2 = 575 \exp\left(-\frac{E_2}{RT}\right) \quad (\text{A4})$$

where $E_2 = 21.4 \text{ kJ mol}^{-1}$ is the activation energy for stage 2, and σ_z denotes the firn overburden load at a given depth in Mg m^{-2} :

$$\sigma_z = \int_0^z \rho(z') dz' / 1000 \quad (\text{A5})$$

Note that we divide by 1000 to convert from kg m^{-3} to Mg m^{-3} , the units used by Herron and Langway (1980).

We use the mathematical description by Freitag et al. (2013a) to include the hypothesized firn softening effect of impurities. In this approach an increasing Ca concentration, as a proxy for mineral dust content, lowers the activation energy of firn, thereby enhancing densification rates. This is tantamount to stating that dusty firn behaves as if it were “warmer” than its climatological temperature. The H-L activation energies of Eqs. (A2) and (A4) are modified by $[\text{Ca}]$ in the following way:

$$E^{\text{Ca}} = E^{\text{HL}} \times \alpha \left[1 - \beta \ln\left(\frac{[\text{Ca}]}{[\text{Ca}]_{\text{crit}}}\right) \right] \quad (\text{A6})$$

where E^{Ca} and E^{HL} are the Ca-modified and original H-L activation energies, respectively, $[\text{Ca}]_{\text{crit}} = 0.5 \text{ ng g}^{-1}$ is the minimum concentration at which impurities affect densification, and α and β are calibration parameters. Whenever $[\text{Ca}](z) < [\text{Ca}]_{\text{crit}}$, we set $[\text{Ca}](z) = [\text{Ca}]_{\text{crit}}$.

The parameter β sets the sensitivity to dust loading, and α is a normalization parameter that is included to account for the fact that the original H-L model was calibrated without the impurity effect. Consequently, if $\beta > 0$, one needs to compensate by setting $\alpha > 1$ to preserve the original H-L calibration. The work by Freitag et al. (2013a) recommends $\beta = 0.01$ and $\alpha = 1.025$ (which yields $E^{\text{Ca}} = E^{\text{HL}}$ at $[\text{Ca}] = 5.73 \text{ ng g}^{-1}$).

Using the recommended value of $\alpha = 1.025$ at WD provides a poor fit to observations of present-day firn density and close-off depth. The optimal fit to present-day WD observations is obtained using an activation energy equal to $1.007 \times E^{\text{HL}}$; this is in between the values suggested by Herron and Langway (1980) and Freitag et al. (2013a). In the experiment presented in Fig. 4 we changed the dust sensitivity β ; it is clear that we need to simultaneously change α to keep the model well-calibrated to present-day conditions. Using the fact that the mean late Holocene WD $[\text{Ca}]$ is around 0.8 ng g^{-1} , we let $\alpha = 1.007 / (1 - \beta \ln[0.8/0.5])$ in the experiment of Fig. 4. This approach ensures that the present-day E^{Ca} is invariant with β , and equals $E^{\text{Ca}} = 1.007 \times E^{\text{HL}}$. This means that whatever value we choose for β , we will obtain a good fit to the present-day Δage , $\delta^{15}\text{N}$ and A values that are well known from direct observations (Battle et al., 2011).

To validate the H-L model Δage simulations, we repeated the firn modeling using the densification physics of Arnaud et al. (2000), which is also the basis of the model by Goujon et al. (2003). Our implementation of the Arnaud model is based on the description in the latter paper, with one modification at the critical density that we outline here.

In the Arnaud model, densification in the stage 1 follows the work of Alley (1987), and is given by:

$$\frac{dD}{dt} = \gamma \left(\frac{P}{D^2} \right) \left(1 - \frac{5}{3} D \right) \quad (\text{A7})_{1115}$$

with D the relative density $D = \rho/\rho_{\text{ice}}$, P the overburden pressure, and γ a scaling factor used to make the densification rates continuous across the critical density D_c . Stage 2 densification is given by: 1120

$$\frac{dD}{dt} = k_A (D^2 D_c)^{\frac{1}{3}} \left(\frac{a}{\pi} \right)^{\frac{1}{2}} \left(\frac{4\pi P}{3aZD} \right)^3 \quad (\text{A8})$$

with

$$k_A = 4.182 \times 10^4 \exp \left(-\frac{E_A}{RT} \right) \quad (\text{A9})_{1125}$$

where a is the average contact area between the grains, Z is the coordination number, and E_A is the activation energy (60 kJ mol^{-1}). Arnaud densification rates for stage 3 ($D \geq 0.9$) are describe elsewhere (Goujon et al., 2003; Arnaud et al., 2000). 1130

The difficulty in implementing this model is the following. The densification rates of Eqs. (A7–A8) exhibit a discontinuity at the critical density $D = D_c = 0.6$, that cannot be remedied with the scaling factor γ . On approaching D_c , densification rates given by Eq. (A7) go to zero (due to the inclusion of the term $(1 - \frac{5}{3}D)$), while densification rates given by Eq. (A8) go to infinity because the contact area a equals zero at $D = D_c$. Clearly neither equation gives a realistic result at $D = D_c$. Therefore, in our implementation of the Arnaud model we use the H-L densification rates of Eq. (A1) in stage 1, instead of Eq. (A7). We take the onset of stage 2 to be the density at which Eqs. (A1) and (A8) intercept, thus avoiding the singularity in Eq. A8. This approach has the additional advantages of removing dependence on ad-hoc scaling factor γ , and introducing realistic temperature dependence for stage 1 densification. Because stage 1 spans just the top 10–20% of the firn column, the modification has only a minor influence on the overall behavior of the Arnaud model. The Goujon model code avoids the singularity in Eq. (A8) by extending stage 1 to $D_c + \varepsilon$ (Anaïs Orsi, personal communication, 2014), a procedure not described in Goujon et al. (2003). 1140
1150
1160

Acknowledgements. We thank Mark Twickler and Joseph Souney Jr. of the WAIS Divide Science Coordination Office, the Ice Drilling Design and Operations group at the University of Wisconsin for recovering the ice core, O. Maselli, N. Chellman, M. Grieman, J. D’Andrilli, L. Layman, and R. Grinstead for help in making the continuous CH_4 and Ca measurements, Raytheon Polar Services for logistics support in Antarctica, the 109th New York Air National Guard for airlift in Antarctica, Anaïs Orsi for fruitful discussions, Dan Muhs for feedback on the manuscript, and

the dozens of core handlers in the field and at the National Ice Core Laboratory for the core processing. This work is funded by the US National Science Foundation through grants 0539232, 0537661 (to K. M. C.), ANT05-38657 (to J. P. S.), NSFC 41230524 (to H. C. and R. L. E), 0839093, 1142166 (to J. R. M.) 1043092 (to E. J. S.) and through grants 0230396, 0440817, 0944348 and 0944266 to the Desert Research Institute of Reno Nevada and University of New Hampshire for the collection and distribution of the WAIS Divide ice core and related tasks. We further acknowledge support by the NOAA Climate and Global Change fellowship program, administered by the University Corporation for Atmospheric Research (to C. B.) and the Villum Foundation (to M. W.).

References

- Aciego, S., Bourdon, B., Schwander, J., Baur, H., and Forneri, A.: Toward a radiometric ice clock: uranium ages of the Dome C ice core, *Quaternary Sci. Rev.*, 30, 2389–2397, doi:10.1016/j.quascirev.2011.06.008, 2011.
- Ahn, J. and Brook, E. J.: Atmospheric CO_2 and climate on millennial time scales during the last glacial period, *Science*, 322, 83–85, doi:10.1126/science.1160832, 2008.
- Ahn, J., Brook, E. J., Schmittner, A., and Kreutz, K.: Abrupt change in atmospheric CO_2 during the last ice age, *Geophys. Res. Lett.*, 39, L18711, doi:10.1029/2012gl053018, 2012.
- Alley, R. B.: Firn densification by grain-boundary sliding – a 1st model, *Journal De Physique*, 48, 249–256, 1987.
- Arnaud, L., Barnola, J. M., and Duval, P.: Physical modeling of the densification of snow/firn and ice in the upper part of polar ice sheets, in: *Physics of Ice Core Records*, edited by Hondoh, T., pp. 285–305, 2000.
- Barnola, J. M., Pimienta, P., Raynaud, D., and Korotkevich, Y. S.: CO_2 -climate relationship as deduced from the Vostok ice core: a re-examination based on new measurements and on a re-evaluation of the air dating, *Tellus B.*, 43, 83–90, 1991.
- Battle, M. O., Severinghaus, J. P., Sofen, E. D., Plotkin, D., Orsi, A. J., Aydin, M., Montzka, S. A., Sowers, T., and Tans, P. P.: Controls on the movement and composition of firn air at the West Antarctic Ice Sheet Divide, *Atmos. Chem. Phys.*, 11, 11007–11021, doi:10.5194/acp-11-11007-2011, 2011.
- Baumgartner, M., Kindler, P., Eicher, O., Floch, G., Schilt, A., Schwander, J., Spahni, R., Capron, E., Chappellaz, J., Leuenberger, M., Fischer, H., and Stocker, T. F.: NGRIP CH_4 concentration from 120 to 10 kyr before present and its relation to a $\delta^{15}\text{N}$ temperature reconstruction from the same ice core, *Clim. Past*, 10, 903–920, doi:10.5194/cp-10-903-2014, 2014.
- Bazin, L., Landais, A., Lemieux-Dudon, B., Toyé Mahamadou Kele, H., Veres, D., Parrenin, F., Martinerie, P., Ritz, C., Capron, E., Lipenkov, V., Loutre, M.-F., Raynaud, D., Vinther, B., Svensson, A., Rasmussen, S. O., Severi, M., Blunier, T., Leuenberger, M., Fischer, H., Masson-Delmotte, V., Chappellaz, J., and Wolff, E.: An optimized multi-proxy, multi-site Antarctic ice and gas orbital chronology (AICC2012): 120–800 ka, *Clim. Past*, 9, 1715–1731, doi:10.5194/cp-9-1715-2013, 2013.
- Bendel, V., Ueltzhoffer, K. J., Freitag, J., Kipfstuhl, S., Kuhs, W. F., Garbe, C. S., and Faria, S. H.: High-resolution variations in size, number and arrangement of air bubbles in the EPICA DML (Antarctica) ice core, *J. Glaciol.*, 59, 972–980, 2013.

- Bender, M. L.: Orbital tuning chronology for the Vostok climate record supported by trapped gas composition, *Earth Planet. Sc. Lett.*, 204, 275–289, 2002.
- Bender, M. L., Barnett, B., Dreyfus, G., Jouzel, J., and Porcelli, D.: The contemporary degassing rate of Ar-40 from the Solid Earth, *P. Natl. Acad. Sci. USA*, 105, 8232–8237, doi:10.1073/pnas.0711679105, 2008.
- Blunier, T. and Brook, E. J.: Timing of millennial-scale climate change in Antarctica and Greenland during the last glacial period, *Science*, 291, 109–112, 2001.
- Blunier, T. and Schwander, J.: Gas enclosure in ice: age difference and fractionation, in: *Physics of Ice Core Records*, edited by: Hondoh, T., Hokkaido University Press, Sapporo, 307–326, 2000.
- Blunier, T., Chappellaz, J., Schwander, J., Dallenbach, A., Stauffer, B., Stocker, T. F., Raynaud, D., Jouzel, J., Clausen, H. B., Hammer, C. U., and Johnsen, S. J.: Asynchrony of Antarctic and Greenland climate change during the last glacial period, *Nature*, 394, 739–743, doi:10.1038/29447, 1998.
- Blunier, T., Spahni, R., Barnola, J.-M., Chappellaz, J., Loulergue, L., and Schwander, J.: Synchronization of ice core records via atmospheric gases, *Clim. Past*, 3, 325–330, doi:10.5194/cp-3-325-2007, 2007.
- Broccoli, A. J., Dahl, K. A., and Stouffer, R. J.: Response of the ITCZ to Northern Hemisphere cooling, *Geophys. Res. Lett.*, 33, L01702, doi:10.1029/2005gl024546, 2006.
- Brook, E. J., Sowers, T., and Orchard, J.: Rapid variations in atmospheric methane concentration during the past 110,000 years, *Science*, 273, 1087–1091, 1996.
- Buizert, C., Martinerie, P., Petrenko, V. V., Severinghaus, J. P., Trudinger, C. M., Witrant, E., Rosen, J. L., Orsi, A. J., Rubino, M., Etheridge, D. M., Steele, L. P., Hogan, C., Laube, J. C., Sturges, W. T., Levchenko, V. A., Smith, A. M., Levin, I., Conway, T. J., Dlugokencky, E. J., Lang, P. M., Kawamura, K., Jenk, T. M., White, J. W. C., Sowers, T., Schwander, J., and Blunier, T.: Gas transport in firn: multiple-tracer characterisation and model intercomparison for NEEM, Northern Greenland, *Atmos. Chem. Phys.*, 12, 4259–4277, doi:10.5194/acp-12-4259-2012, 2012.
- Buizert, C., Sowers, T., and Blunier, T.: Assessment of diffusive isotopic fractionation in polar firn, and application to ice core trace gas records, *Earth Planet. Sc. Lett.*, 361, 110–119, doi:10.1016/j.epsl.2012.11.039, 2013.
- Buizert, C., Baggenstos, D., Jiang, W., Purtschert, R., Petrenko, V. V., Lu, Z.-T., Muller, P., Kuhl, T., Lee, J., Severinghaus, J. P., and Brook, E. J.: Radiometric ^{81}Kr dating identifies 120,000-year-old ice at Taylor Glacier, Antarctica, *P. Natl. Acad. Sci. USA*, 111, 6876–6881, doi:10.1073/pnas.1320329111, 2014.
- Buizert, C., Gkinis, V., Severinghaus, J. P., He, F., Lecavalier, B. S., Kindler, P., Leuenberger, M., Carlson, A. E., Vinther, B., Masson-Delmotte, V., White, J. W. C., Liu, Z., Otto-Bliesner, B., and Brook, E. J.: Greenland temperature response to climate forcing during the last deglaciation, *Science*, 345, 1177–1180, doi:10.1126/science.1254961, 2014.
- Caillon, N., Severinghaus, J. P., Jouzel, J., Barnola, J.-M., Kang, J., and Lipenkov, V. Y.: Timing of atmospheric CO_2 and antarctic temperature changes across termination III, *Science*, 299, 1728–1731, doi:10.1126/science.1078758, 2003.
- Capron, E., Landais, A., Chappellaz, J., Schilt, A., Buiron, D., Dahl-Jensen, D., Johnsen, S. J., Jouzel, J., Lemieux-Dudon, B., Loulergue, L., Leuenberger, M., Masson-Delmotte, V., Meyer, H., Oerter, H., and Stenni, B.: Millennial and sub-millennial scale climatic variations recorded in polar ice cores over the last glacial period, *Clim. Past*, 6, 345–365, doi:10.5194/cp-6-345-2010, 2010.
- Capron, E., Landais, A., Buiron, D., Cauquoin, A., Chappellaz, J., Debret, M., Jouzel, J., Leuenberger, M., Martinerie, P., Masson-Delmotte, V., Mulvaney, R., Parrenin, F., and Prié, F.: Glacial-interglacial dynamics of Antarctic firn columns: comparison between simulations and ice core air- $\delta^{15}\text{N}$ measurements, *Clim. Past*, 9, 983–999, doi:10.5194/cp-9-983-2013, 2013.
- Chappellaz, J., Stowasser, C., Blunier, T., Baslev-Clausen, D., Brook, E. J., Dallmayr, R., Faïn, X., Lee, J. E., Mitchell, L. E., Pascual, O., Romanini, D., Rosen, J., and Schüpbach, S.: High-resolution glacial and deglacial record of atmospheric methane by continuous-flow and laser spectrometer analysis along the NEEM ice core, *Clim. Past*, 9, 2579–2593, doi:10.5194/cp-9-2579-2013, 2013.
- Chiang, J. C. H. and Bitz, C. M.: Influence of high latitude ice cover on the marine Intertropical Convergence Zone, *Clim. Dynam.*, 25, 477–496, doi:10.1007/s00382-005-0040-5, 2005.
- Cuffey, K. M. and Clow, G. D.: Temperature, accumulation, and ice sheet elevation in central Greenland through the last deglacial transition, *J. Geophys. Res.*, 102, 26383–26396, doi:10.1029/96jc03981, 1997.
- Cuffey, K. M. and Paterson, W. S. B.: *The Physics of Glaciers*, 4th edn., Butterworth-Heinemann, Oxford, UK, 2010.
- Cuffey, K. M., Clow, G. D., Alley, R. B., Stuiver, M., Waddington, E. D., and Saltus, R. W.: Large arctic temperature change at the Wisconsin-Holocene glacial transition, *Science*, 270, 455–458, 1995.
- Cvijanovic, I. and Chiang, J. C. H.: Global energy budget changes to high latitude North Atlantic cooling and the tropical ITCZ response, *Clim. Dynam.*, 40, 1435–1452, doi:10.1007/s00382-012-1482-1, 2013.
- Dahl-Jensen, D., Mosegaard, K., Gundestrup, N., Clow, G. D., Johnsen, S. J., Hansen, A. W., and Balling, N.: Past temperatures directly from the Greenland ice sheet, *Science*, 282, 268–271, doi:10.1126/science.282.5387.268, 1998.
- Dansgaard, W. and Johnsen, S.: A flow model and a time scale for the ice core from Camp Century, Greenland, *J. Glaciol.*, 8, 215–223, 1969.
- Dlugokencky, E., Myers, R., Lang, P., Masarie, K., Crotwell, A., Thoning, K., Hall, B., Elkins, J., and Steele, L.: Conversion of NOAA atmospheric dry air CH_4 mole fractions to a gravimetrically prepared standard scale, *J. Geophys. Res.-Atmos.*, 110, D18306, doi:10.1029/2005JD006035, 2005.
- Dreyfus, G. B., Jouzel, J., Bender, M. L., Landais, A., Masson-Delmotte, V., and Leuenberger, M.: Firn processes and $\delta^{15}\text{N}$: potential for a gas-phase climate proxy, *Quaternary Sci. Rev.*, 29, 28–42, 2010.
- Edwards, R. L., Cheng, H., Wang, Y. J., Yuan, D. X., Kelly, M. J., Severinghaus, J. P., Burnett, A., Wang, X. F., Smith, E., and Kong, X. G.: A Refined Hulu and Dongge Cave Climate Record and the Timing of Climate Change during the Last Glacial Cycle, *Earth Planet. Sci. Lett.*, in review.

- 1285 EPICA Community Members: One-to-one coupling of glacial climate variability in Greenland and Antarctica, *Nature*, 444, 195–1345 198, doi:10.1038/nature05301, 2006.
- Etheridge, D. M., Pearman, G. I., and Fraser, P. J.: Changes in tropospheric methane between 1841 and 1978 from a high
1290 accumulation-rate Antarctic ice core, *Tellus B*, 44, 282–294, doi:10.1034/j.1600-0889.1992.t01-3-00006.x, 1992. 1350
- Fleitmann, D., Cheng, H., Badertscher, S., Edwards, R. L., Mudelsee, M., Gokturk, O. M., Fankhauser, A., Pickering, R., Raible, C. C., Matter, A., Kramers, J., and Tuysuz, O.: Timing and climatic impact of Greenland interstadials recorded
1295 in stalagmites from northern Turkey, *Geophys. Res. Lett.*, 36, 355 doi:10.1029/2009gl040050, 2009.
- Freitag, J., Kipfstuhl, J., Laepple, T., and Wilhelms, F.: Impurity-controlled densification: a new model for stratified polar firn, *J. Glaciol.*, 59, 1163–1169, 2013a.
- 1300 Freitag, J., Kipfstuhl, S., and Laepple, T.: Core-scale radiosopic¹³⁶⁰ imaging: a new method reveals density-calcium link in Antarctic firn, *J. Glaciol.*, 59, 1009–1014, 2013b.
- Fudge, T. J., Waddington, E. D., Conway, H., Lundin, J. M. D., and Taylor, K.: Interpolation methods for Antarctic ice-core
1305 timescales: application to Byrd, Siple Dome and Law Dome ice¹³⁶⁵ cores, *Clim. Past*, 10, 1195–1209, doi:10.5194/cp-10-1195-2014, 2014.
- Fujita, S., Hirabayashi, M., Goto-Azuma, K., Dallmayr, R., Satow, K., Zheng, J., and Dahl-Jensen, D.: Densification of layered firn
1310 of the ice sheet at NEEM, Greenland, *Journal of Glaciology*, 60, 905, doi:10.3189/2014JG14J006, 2014.
- Goujon, C., Barnola, J. M., and Ritz, C.: Modeling the densification of polar firn including heat diffusion: Application to close-off
1315 characteristics and gas isotopic fractionation for Antarctica and Greenland sites, *J. Geophys. Res.-Atmos.*, 108, 18, 375 doi:10.1029/2002jd003319, 2003.
- Gow, A. J., Meese, D. A., Alley, R. B., Fitzpatrick, J. J., Anandakrishnan, S., Woods, G. A., and Elder, B. C.: Physical and structural
1320 properties of the Greenland Ice Sheet Project 2 ice core: a review, *J. Geophys. Res.-Oceans*, 102, 26559–26575, 1380 doi:10.1029/97JC00165, 1997.
- Gundestrup, N. S., Dahl-Jensen, D., Hansen, B. L., and Kelty, J.: Bore-hole survey at Camp Century, 1989, *Cold Reg. Sci. Technol.*, 21, 187–193, doi:10.1016/0165-232x(93)90006-t, 1993.
- 1325 Herron, M. M. and Langway, C. C.: Firn densification: an empirical¹³⁸⁵ model, *J. Glaciol.*, 25, 373–385, 1980.
- Horhold, M. W., Laepple, T., Freitag, J., Bigler, M., Fischer, H., and Kipfstuhl, S.: On the impact of impurities on the densification of polar firn, *Earth Planet. Sc. Lett.*, 325–326, 93–99,
1330 doi:10.1016/j.epsl.2011.12.022, 2012. 1390
- Huber, C., Leuenberger, M., Spahni, R., Fluckiger, J., Schwander, J., Stocker, T. F., Johnsen, S., Landals, A., and Jouzel, J.: Isotope calibrated Greenland temperature record over Marine Isotope Stage 3 and its relation to CH₄, *Earth Planet. Sc. Lett.*, 243, 504–519, doi:10.1016/j.epsl.2006.01.002, 2006. 1395
- 1335 Johnsen, S. J., Dahl-Jensen, D., Gundestrup, N., Stef-fensen, J. P., Clausen, H. B., Miller, H., Masson-Delmotte, V., Sveinbjörnsdóttir, A. E., and White, J.: Oxygen isotope and palaeotemperature records from six Greenland ice-core stations: Camp Century, Dye-3, GRIP, GISP2, Renland and North-
1340 GRIP, *J. Quaternary Sci.*, 16, 299–307, doi:10.1002/jqs.622, 2001.
- Kanner, L. C., Burns, S. J., Cheng, H., and Edwards, R. L.: High-latitude forcing of the south American summer monsoon during the last glacial, *Science*, 335, 570–573, 2012.
- Kaspers, K. A., van de Wal, R. S. W., van den Broeke, M. R., Schwander, J., van Lipzig, N. P. M., and Brenninkmeijer, C. A. M.: Model calculations of the age of firn air across the Antarctic continent, *Atmos. Chem. Phys.*, 4, 1365–1380, doi:10.5194/acp-4-1365-2004, 2004.
- Kawamura, K., Severinghaus, J. P., Ishidoya, S., Sugawara, S., Hashida, G., Motoyama, H., Fujii, Y., Aoki, S., and Nakazawa, T.: Convective mixing of air in firn at four polar sites, *Earth Planet. Sc. Lett.*, 244, 672–682, 2006.
- Kawamura, K., Parrenin, F., Lisiecki, L., Uemura, R., Vimeux, F., Severinghaus, J. P., Hutterli, M. A., Nakazawa, T., Aoki, S., Jouzel, J., Raymo, M. E., Matsumoto, K., Nakata, H., Motoyama, H., Fujita, S., Goto-Azuma, K., Fujii, Y., and Watanabe, O.: Northern Hemisphere forcing of climatic cycles in Antarctica over the past 360,000 years, *Nature*, 448, 912–916, doi:10.1038/nature06015, 2007.
- Kindler, P., Guillevic, M., Baumgartner, M., Schwander, J., Landais, A., and Leuenberger, M.: Temperature reconstruction from 10 to 120 kyr b2k from the NGRIP ice core, *Clim. Past*, 10, 887–902, doi:10.5194/cp-10-887-2014, 2014.
- Lal, D., Jull, A. J. T., Donahue, D. J., Burtner, D., and Nishizumi, K.: Polar ice ablation rates measured using in situ cosmogenic C-14, *Nature*, 346, 350–352, 1990.
- Landais, A., Barnola, J. M., Kawamura, K., Caillon, N., Delmotte, M., Van Ommen, T., Dreyfus, G., Jouzel, J., Masson-Delmotte, V., Minster, B., Freitag, J., Leuenberger, M., Schwander, J., Huber, C., Etheridge, D., and Morgan, V.: Firn-air delta N-15 in modern polar sites and glacial-interglacial ice: a model-data mismatch during glacial periods in Antarctica?, *Quaternary Sci. Rev.*, 25, 49–62, doi:10.1016/j.quascirev.2005.06.007, 2006.
- Marcott, S. A., Bauska, T. K., Buizert, C., Steig, E. J., Rosen, J. L., Cuffey, K. M., Fudge, T. J., Severinghaus, J. P., Ahn, J., Kalk, M. L., McConnell, J. R., Sowers, T., Taylor, K. C., White, J. W. C., and Brook, E. J.: Centennial-scale changes in the global carbon cycle during the last deglaciation, *Nature*, 514, 616–619, doi:10.1038/nature13799, 2014.
- Martinerie, P., Lipenkov, V. Y., Raynaud, D., Chappellaz, J., Barkov, N. I., and Lorius, C.: Air content paleo record in the Vostok ice core (Antarctica): A mixed record of climatic and glaciological parameters, *J. Geophys. Res.-Atmos.*, 99, 10565–10576, 1994.
- McConnell, J. R., Lamorey, G. W., Lambert, S. W., and Taylor, K. C.: Continuous ice-core chemical analyses using inductively coupled plasma mass spectrometry, *Environ. Sci. Technol.*, 36, 7–11, doi:10.1021/es011088z, 2002.
- McConnell, J. R., Edwards, R., Kok, G. L., Flanner, M. G., Zender, C. S., Saltzman, E. S., Banta, J. R., Pasteris, D. R., Carter, M. M., and Kahl, J. D. W.: 20th-century industrial black carbon emissions altered arctic climate forcing, *Science*, 317, 1381–1384, doi:10.1126/science.1144856, 2007.
- McManus, J. F., Francois, R., Gherardi, J. M., Keigwin, L. D., and Brown-Leger, S.: Collapse and rapid resumption of Atlantic meridional circulation linked to deglacial climate changes, *Nature*, 428, 834–837, doi:10.1038/nature02494, 2004.
- Mischler, J. A., Sowers, T. A., Alley, R. B., Battle, M., McConnell, J. R., Mitchell, L., Popp, T., Sofen, E., and

- Spencer, M. K.: Carbon and hydrogen isotopic composition of methane over the last 1000 years, *Global Biogeochem. Cy.*, 23, GB4024, doi:10.1029/2009gb003460, 2009.
- Mitchell, L., Brook, E., Lee, J. E., Buizert, C., and Sowers, T.: Constraints on the late holocene anthropogenic contribution to the atmospheric methane budget, *Science*, 342, 964–966, doi:10.1126/science.1238920, 2013.
- Mitchell, L. E., Brook, E. J., Sowers, T., McConnell, J. R., and Taylor, K.: Multidecadal variability of atmospheric methane, 1000–1800 C.E, *J. Geophys. Res.*, 116, G02007, doi:10.1029/2010jg001441, 2011.
- NEEM community members: Eemian interglacial reconstructed from a Greenland folded ice core, *Nature*, 493, 489–494, 2013.
- NGRIP community members: High-resolution record of Northern Hemisphere climate extending into the last interglacial period, *Nature*, 431, 147–151, doi:10.1038/nature02805, 2004.
- Orsi, A. J.: Temperature reconstruction at the West Antarctic Ice Sheet Divide, for the last millennium, from the combination of borehole temperature and inert gas isotope measurements, Ph. D. thesis, University of California, San Diego, 2013.
- Parrenin, F., Barker, S., Blunier, T., Chappellaz, J., Jouzel, J., Landais, A., Masson-Delmotte, V., Schwander, J., and Veres, D.: On the gas-ice depth difference (Δ depth) along the EPICA Dome C ice core, *Clim. Past*, 8, 1239–1255, doi:10.5194/cp-8-1239-2012, 2012.
- Parrenin, F., Masson-Delmotte, V., Kohler, P., Raynaud, D., Pailard, D., Schwander, J., Barbante, C., Landais, A., Wegner, A., and Jouzel, J.: Synchronous change of atmospheric CO₂ and antarctic temperature during the last deglacial warming, *Science*, 339, 1060–1063, doi:10.1126/science.1226368, 2013.
- Pedro, J. B., van Ommen, T. D., Rasmussen, S. O., Morgan, V. I., Chappellaz, J., Moy, A. D., Masson-Delmotte, V., and Delmotte, M.: The last deglaciation: timing the bipolar seesaw, *Clim. Past*, 7, 671–683, doi:10.5194/cp-7-671-2011, 2011.
- Pedro, J. B., Rasmussen, S. O., and van Ommen, T. D.: Tightened constraints on the time-lag between Antarctic temperature and CO₂ during the last deglaciation, *Clim. Past*, 8, 1213–1221, doi:10.5194/cp-8-1213-2012, 2012.
- Petrenko, V. V., Severinghaus, J. P., Brook, E. J., Reeh, N., and Schaefer, H.: Gas records from the West Greenland ice margin covering the Last Glacial Termination: a horizontal ice core, *Quaternary Sci. Rev.*, 25, 865–875, 2006.
- Rasmussen, S. O., Andersen, K. K., Svensson, A. M., Steffensen, J. P., Vinther, B. M., Clausen, H. B., Siggaard-Andersen, M. L., Johnsen, S. J., Larsen, L. B., Dahl-Jensen, D., Bigler, M., Röthlisberger, R., Fischer, H., Goto-Azuma, K., Hansson, M. E., and Ruth, U.: A new Greenland ice core chronology for the last glacial termination, *J. Geophys. Res.*, 111, D06102, doi:10.1029/2005jd006079, 2006.
- Rasmussen, S. O., Abbott, P. M., Blunier, T., Bourne, A. J., Brook, E., Buchardt, S. L., Buizert, C., Chappellaz, J., Clausen, H. B., Cook, E., Dahl-Jensen, D., Davies, S. M., Guillevic, M., Kipfstuhl, S., Laepple, T., Seierstad, I. K., Severinghaus, J. P., Steffensen, J. P., Stowasser, C., Svensson, A., Vallenga, P., Vinther, B. M., Wilhelms, F., and Winstrup, M.: A first chronology for the North Greenland Eemian Ice Drilling (NEEM) ice core, *Clim. Past*, 9, 2713–2730, doi:10.5194/cp-9-2713-2013, 2013.
- Rasmussen, S. O., Bigler, M., Blockley, S. P., Blunier, T., Buchardt, S. L., Clausen, H. B., Cvijanovic, I., Dahl-Jensen, D., Johnsen, S. J., Fischer, H., Gkinis, V., Guillevic, M., Hoek, W. Z., Lowe, J. J., Pedro, J. B., Popp, T., Seierstad, I. K., Steffensen, J. P., Svensson, A. M., Vallenga, P., Vinther, B. M., Walker, M. J., Wheatley, J. J., and Winstrup, M.: A stratigraphic framework for abrupt climatic changes during the Last Glacial period based on three synchronized Greenland ice-core records: refining and extending the INTIMATE event stratigraphy, *Quaternary Science Reviews*, 106, 14 – 28, doi:10.1016/j.quascirev.2014.09.007, 2014.
- Reimer, P., Bard, E., Bayliss, A., Beck, J., Blackwell, P., Ramsey, C. B., Buck, C., Cheng, H., Edwards, R. L., Friedrich, M., Grootes, P., Guilderson, T., Haffidason, H., Hajdas, I., Hatté, C., Heaton, T., Hoffmann, D., Hogg, A., Hughen, K., Kaiser, K., Kromer, B., Manning, S., Niu, M., Reimer, R., Richards, D., Scott, E., Southon, J., Staff, R., Turney, C., and van der Plicht, J.: IntCal13 and Marine13 Radiocarbon Age Calibration Curves 0–50,000 Years cal BP, *Radiocarbon*, 55, 1869–1887, doi:10.2458/azu_js_rc.55.16947, 2013.
- Rhodes, R. H., Fain, X., Stowasser, C., Blunier, T., Chappellaz, J., McConnell, J. R., Romanini, D., Mitchell, L. E., and Brook, E. J.: Continuous methane measurements from a late Holocene Greenland ice core: atmospheric and in-situ signals, *Earth Planet. Sc. Lett.*, 368, 9–19, doi:10.1016/j.epsl.2013.02.034, 2013.
- Rhodes, R. H., Brook, E. J., Chiang, J. C. H., Blunier, T., Maselli, O. J., McConnell, J. R., Romanini, D., Severinghaus, J. P.: Enhanced tropical methane production in response to iceberg discharge in the North Atlantic, in review.
- Rosen, J. L., Brook, E. J., Severinghaus, J. P., Blunier, T., Mitchell, L. E., Lee, J. E., Edwards, J. S., and Gkinis, V.: An ice core record of near-synchronous global climate changes at the Bolling transition, *Nat. Geosci.*, 7, 459–463, 2014.
- Schwander, J. and Stauffer, B.: Age difference between polar ice and the air trapped in its bubbles, *Nature*, 311, 45–47, 1984.
- Schwander, J., Sowers, T., Barnola, J. M., Blunier, T., Fuchs, A., and Malaize, B.: Age scale of the air in the summit ice: Implication for glacial-interglacial temperature change, *J. Geophys. Res.-Atmos.*, 102, 19483–19493, 1997.
- Seierstad, I., Abbott, P., Bigler, M., Blunier, T., Bourne, A., Brook, E., Buchardt, S. L., Buizert, C., Clausen, H. B., Cook, E., Dahl-Jensen, D., Davies, S., Guillevic, M., Johnsen, S., Pedersen, D., Popp, T., Rasmussen, S. O., Severinghaus, J., Svensson, A., and Vinther, B.: Consistently dated records from the Greenland GRIP, GISP2 and NGRIP ice cores for the past 104 ka reveal regional millennial-scale isotope gradients with possible Heinrich Event imprint, *Quaternary Sci. Rev.*, in press, 2014.
- Severi, M., Begagli, S., Castellano, E., Morganti, A., Traversi, R., Udisti, R., Ruth, U., Fischer, H., Huybrechts, P., Wolff, E., Parrenin, F., Kaufmann, P., Lambert, F., and Steffensen, J. P.: Synchronisation of the EDML and EDC ice cores for the last 52 kyr by volcanic signature matching, *Clim. Past*, 3, 367–374, doi:10.5194/cp-3-367-2007, 2007.
- Severinghaus, J. P., Beaudette, R., Headly, M. A., Taylor, K., and Brook, E. J.: Oxygen-18 of O₂ records the impact of abrupt climate change on the terrestrial biosphere, *Science*, 324, 1431–1434, doi:10.1126/science.1169473, 2009.
- Sigl, M., McConnell, J. R., Layman, L., Maselli, O., McGwire, K., Pasteris, D., Dahl-Jensen, D., Steffensen, J. P.,

- 1520 Vinther, B., Edwards, R., Mulvaney, R., and Kipfstuhl, S.:
A new bipolar ice core record of volcanism from WAIS Di-
vide and NEEM and implications for climate forcing of the
last 2000 years, *J. Geophys. Res.-Atmos.*, 118, 1151–1169,
doi:10.1029/2012JD018603, 2013.
- 1525 Sigl, M., McConnell, J. R., Toohey, M., Curran, M., Das, S. B., Ed-
wards, R., Isaksson, E., Kawamura, K., Kipfstuhl, S., Krüger, K.,
Layman, L., Maselli, O. J., Motizuki, Y., Motoyama, H., Pas-
1585 teris, D. R., and Severi, M.: Insights from Antarctica on volcanic
forcing during the Common Era, *Nature Climate Change*, 4, 693–
697, doi:10.1038/nclimate2293, 2014.
- 1530 Southon, J., Noronha, A. L., Cheng, H., Edwards, R. L., and Wang,
Y.: A high-resolution record of atmospheric ^{14}C based on Hulu
Cave speleothem H82, *Quaternary Science Reviews*, 33, 32–41,
doi:10.1016/j.quascirev.2011.11.022, 2012.
- 1535 Sowers, T., Bender, M., and Raynaud, D.: Elemental and isotopic
composition of occluded O_2 and N_2 in polar ice, *J. Geophys.*
Res.-Atmos., 94, 5137–5150, doi:10.1029/JD094iD04p05137,
1585 1989.
- Sowers, T., Bender, M., Raynaud, D., and Korotkevich, Y. S.: $\delta^{15}\text{N}$
1540 of N_2 in air trapped in polar ice: A tracer of gas transport in the
firm and a possible constraint on ice age-gas age differences, *J.*
Geophys. Res.-Atmos., 97, 15683–15697, 1992.
- 1545 Steig, E. J., Ding, Q., White, J. W. C., Kuttel, M., Rupper, S. B.,
Neumann, T. A., Neff, P. D., Gallant, A. J. E., Mayewski, P. A.,
Taylor, K. C., Hoffmann, G., Dixon, D. A., Schoenemann, S. W.,
Markle, B. R., Fudge, T. J., Schneider, D. P., Schauer, A. J.,
Teel, R. P., Vaughn, B. H., Burgener, L., Williams, J., and Ko-
1550 rotkikh, E.: Recent climate and ice-sheet changes in West Antarc-
tica compared with the past 2,000 years, *Nat. Geosci.*, 6, 372–
375, doi:10.1038/ngeo1778, 2013.
- Stocker, T. F. and Johnsen, S. J.: A minimum thermodynamic
model for the bipolar seesaw, *Paleoceanography*, 18, 1087,
doi:10.1029/2003pa000920, 2003.
- 1555 Stowasser, C., Buizert, C., Gkinis, V., Chappellaz, J., Schüpbach, S.,
Bigler, M., Faïn, X., Sperlich, P., Baumgartner, M., Schilt, A.,
and Blunier, T.: Continuous measurements of methane mix-
ing ratios from ice cores, *Atmos. Meas. Tech.*, 5, 999–1013,
doi:10.5194/amt-5-999-2012, 2012.
- 1560 Svensson, A., Andersen, K. K., Bigler, M., Clausen, H. B.,
Dahl-Jensen, D., Davies, S. M., Johnsen, S. J., Muscheler, R.,
Rasmussen, S. O., Rothlisberger, R., Steffensen, J. P., and
Vinther, B. M.: The Greenland Ice Core Chronology 2005, 15–
42 ka. Part 2: Comparison to other records, *Quaternary Sci. Rev.*,
25, 3258–3267, doi:10.1016/j.quascirev.2006.08.003, 2006.
- 1565 Veres, D., Bazin, L., Landais, A., Toyé Mahamadou Kele, H.,
Lemieux-Dudon, B., Parrenin, F., Martinerie, P., Blayo, E., Blu-
nier, T., Capron, E., Chappellaz, J., Rasmussen, S. O., Severi, M.,
Svensson, A., Vinther, B., and Wolff, E. W.: The Antarctic ice
core chronology (AICC2012): an optimized multi-parameter and
1570 multi-site dating approach for the last 120 thousand years, *Clim.*
Past, 9, 1733–1748, doi:10.5194/cp-9-1733-2013, 2013.
- Voelker, A. H. L.: Global distribution of centennial-scale records for
Marine Isotope Stage (MIS) 3: A database, *Quaternary Sci. Rev.*,
21, 1185–1212, doi:10.1016/s0277-3791(01)00139-1, 2002.
- 1575 WAIS Divide Project Members: Onset of deglacial warming in West
Antarctica driven by local orbital forcing, *Nature*, 500, 440–444,
doi:10.1038/nature12376, 2013.
- WAIS Divide Project Members: Precise inter-polar phasing of abrupt
climate change during the last ice age, in review.
- Wang, X. F., Auler, A. S., Edwards, R. L., Cheng, H., Ito, E.,
and Solheid, M.: Interhemispheric anti-phasing of rainfall dur-
ing the last glacial period, *Quaternary Sci. Rev.*, 25, 3391–3403,
doi:10.1016/j.quascirev.2006.02.009, 2006.
- Wang, Y. J., Cheng, H., Edwards, R. L., An, Z. S., Wu, J. Y.,
Shen, C. C., and Dorale, J. A.: A high-resolution absolute-dated
late pleistocene monsoon record from Hulu Cave, China, *Sci-*
ence, 294, 2345–2348, 2001.
- Winstrup, M., Svensson, A. M., Rasmussen, S. O., Winther, O.,
Steig, E. J., and Axelrod, A. E.: An automated approach for
annual layer counting in ice cores, *Clim. Past*, 8, 1881–1895,
doi:10.5194/cp-8-1881-2012, 2012.
- Wolff, E. W., Fischer, H., Fundel, F., Ruth, U., Twarloh, B., Lit-
tot, G. C., Mulvaney, R., Rothlisberger, R., de Angelis, M.,
Boutron, C. F., Hansson, M., Jonsell, U., Hutterli, M. A.,
Lambert, F., Kaufmann, P., Stauffer, B., Stocker, T. F., Stef-
fensen, J. P., Bigler, M., Siggaard-Andersen, M. L., Udisti, R.,
Becagli, S., Castellano, E., Severi, M., Wagenbach, D., Bar-
bante, C., Gabrielli, P., and Gaspari, V.: Southern Ocean sea-ice
extent, productivity and iron flux over the past eight glacial cy-
cles, *Nature*, 440, 491–496, 2006.
- Wolff, E. W., Chappellaz, J., Blunier, T., Rasmussen, S. O., and
Svensson, A.: Millennial-scale variability during the last glacial:
the ice core record, *Quaternary Sci. Rev.*, 29, 2828–2838, 2010.