



The evolution of the
Afro-Asian monsoon
during the Holocene

A. Dallmeyer et al.

The evolution of sub-monsoon systems in the Afro-Asian monsoon region during the Holocene – comparison of different transient climate model simulations

A. Dallmeyer¹, M. Claussen^{1,2}, N. Fischer¹, K. Haberkorn², S. Wagner³,
M. Pfeiffer⁴, L. Jin⁵, V. Khon^{6,7}, Y. Wang⁸, and U. Herzschuh^{8,9}

¹Max Planck Institute for Meteorology, Bundesstrasse 53, 20146 Hamburg, Germany

²Meteorological Institute/CEN, Universität Hamburg, Bundesstrasse 55,
20146 Hamburg, Germany

³Helmholtz Center Geesthacht, Institute for Coastal Research, 21502 Geesthacht, Germany

⁴Alfred Wegener Institute for Polar and Marine Research, 27568 Bremerhaven, Germany

⁵Key Laboratory of Western China's Environmental Systems, Lanzhou University,
Research School of Arid Environment and Climate Change, Lanzhou 730000, China

⁶Institute of Geosciences, Christian-Albrechts Universität zu Kiel, Ludewig-Meyn-Str. 10–14,
24118 Kiel, Germany

⁷A. M. Obukhov Institute of Atmospheric Physics RAS, Pyzhevsky 3, 117019 Moscow, Russia

⁸Alfred Wegener Institute for Polar and Marine Research, Telegrafenberg A43,
14473 Potsdam, Germany

Title Page

Abstract

Introduction

Conclusions

References

Tables

Figures



Back

Close

Full Screen / Esc

Printer-friendly Version

Interactive Discussion



⁹Institute of Earth and Environmental Science, University of Potsdam,
Karl-Liebknecht-Strasse 24–25, 14476 Potsdam, Germany

Received: 29 March 2014 – Accepted: 29 April 2014 – Published: 15 May 2014

Correspondence to: A. Dallmeyer (anne.dallmeyer@mpimet.mpg.de)

Published by Copernicus Publications on behalf of the European Geosciences Union.

CPD

10, 2293–2353, 2014

The evolution of the Afro-Asian monsoon during the Holocene

A. Dallmeyer et al.

Title Page

Abstract

Introduction

Conclusions

References

Tables

Figures



Back

Close

Full Screen / Esc

Printer-friendly Version

Interactive Discussion



Abstract

The recently proposed global monsoon hypothesis interprets monsoon systems as part of one global-scale atmospheric overturning circulation, implying a connection between the regional monsoon systems and an in-phase behaviour of all northern hemispheric monsoons on annual timescales (Trenberth et al., 2000). Whether this concept can be applied to past climates and variability on longer timescales is still under debate, because the monsoon systems exhibit different regional characteristics such as different seasonality (i.e. onset, peak, and withdrawal). To investigate the interconnection of different monsoon systems during the pre-industrial Holocene, five transient global climate model simulations have been analysed with respect to the rainfall trend and variability in different sub-domains of the Afro-Asian monsoon region. Our analysis suggests that on millennial timescales with varying orbital forcing, the monsoons do not behave as a tightly connected global system. According to the models, the Indian and North African monsoons are coupled, showing similar rainfall trend and moderate correlation in rainfall variability in all models. The East Asian monsoon changes independently during the Holocene. The dissimilarities in the seasonality of the monsoon sub-systems lead to a stronger response of the North African and Indian monsoon systems to the Holocene insolation forcing than of the East Asian monsoon and affect the seasonal distribution of Holocene rainfall variations. Within the Indian and North African monsoon domain, precipitation solely changes during the summer months, showing a decreasing Holocene precipitation trend. In the East Asian monsoon region, the precipitation signal is determined by an increasing precipitation trend during spring and a decreasing precipitation change during summer, partly balancing each other. A synthesis of reconstructions and the model results do not reveal an impact of the different seasonality on the timing of the Holocene rainfall optimum in the different sub-monsoon systems. They rather indicate locally inhomogeneous rainfall changes and show, that single palaeo-records should not be used to characterise the rainfall change and monsoon evolution for entire monsoon sub-systems.

The evolution of the Afro-Asian monsoon during the Holocene

A. Dallmeyer et al.

Title Page

Abstract

Introduction

Conclusions

References

Tables

Figures



Back

Close

Full Screen / Esc

Printer-friendly Version

Interactive Discussion



1 Introduction

Monsoon systems are coupled atmosphere–ocean–land phenomena that are primarily driven by seasonal and latitudinal differences in incoming solar radiation. The different heat capacities of oceans and continents lead to strong thermal contrasts forming large-scale atmospheric circulations that reverse seasonally and are characteristically accompanied by summer rainfall and winter dryness (Webster et al., 1998). Changes in any component of the climate system affect the monsoon circulations and result in strong temporal climate variability on all timescales (e.g. Ding, 2007; Lau et al., 2000; Wang, 2006). The most pronounced monsoon systems are the North African and Asian monsoon incorporating the Indian and East Asian monsoon subsystems.

Prior to the satellite era, observational data of monsoon precipitation and circulations were scarce, particularly above the oceans. By the use of remote sensing, monitoring of all monsoon systems has been enabled. The in-phase movement of the global monsoon systems partly visible in the seasonal migration of the Intertropical Convergence Zone (ITCZ) led to the development of a new monsoon concept, i.e. the global monsoon hypothesis (Trenberth et al., 2000). This concept suggests that all monsoon systems are part of one seasonal varying global-scale atmospheric overturning circulation in the Tropics and Subtropics forced by the annual cycle of insolation and the resultant global divergent motion. For instance, the African and Indian monsoon share similar decadal variability (Feudale and Kucharski, 2013). Whether the global monsoon concept can be applied to past climates and variability on longer timescales is not yet clear (Trenberth et al., 2000), although palaeomonsoon studies reveal similarities to the modern global monsoon concept regarding palaeomonsoon evolution, e.g. similar long-term monsoon intensity oscillations in different monsoon-subdomains (Cheng et al., 2012).

During the early-Holocene, the main changes in surface boundary conditions compared to present-day were the remnant Laurentide ice-sheet and differences in the seasonal incoming solar radiation. For instance, 9000 years ago (9 k), the cyclic variations in the Earth's orbital configuration (mainly the precession) led to a 10 % higher summer

The evolution of the Afro-Asian monsoon during the Holocene

A. Dallmeyer et al.

Title Page

Abstract

Introduction

Conclusions

References

Tables

Figures



Back

Close

Full Screen / Esc

Printer-friendly Version

Interactive Discussion



The evolution of the Afro-Asian monsoon during the Holocene

A. Dallmeyer et al.

Title Page

Abstract

Introduction

Conclusions

References

Tables

Figures



Back

Close

Full Screen / Esc

Printer-friendly Version

Interactive Discussion



insolation on the Northern Hemisphere compared to today (Berger, 1978). In contrast, winter insolation was decreased by 10% yielding only small changes in the annual mean insolation, but an increase of the amplitude of the seasonal insolation cycle. While the insolation differences have continuously decreased throughout the Holocene, the present extent of the Northern Hemisphere ice-sheet was already reached during mid-Holocene. According to the global monsoon concept (Trenberth et al., 2000) and Kutzbach's orbital monsoon hypothesis of northern hemispheric summer insolation driving the summer monsoon evolution at precessional scale (Kutzbach, 1981; Ruddiman, 2006), one would expect that all boreal summer monsoon systems react similarly to this insolation change. This would imply an intensification of the summer monsoon strength and an increased summer precipitation at early- and mid-Holocene followed by a gradual decrease of both climate parameters in the course of the time towards present-day.

Indeed, many palaeoenvironmental records reveal enhanced northern hemispheric monsoon circulations and more rainfall during the early- and/or mid-Holocene (e.g. Fleitmann et al., 2003; Jolly et al., 1998; Peyron et al., 2006; Prasad and Enzel, 2006; Wang et al., 2005). However, not all reconstructions show a synchronous trend within and among the different sub-monsoon regions. For the North African monsoon area, for instance, some records are indicative of an abrupt end of the humid period around 5 k (e.g. deMenocal et al., 2000), whereas other records rather suggest a gradual decline in annual precipitation during the Holocene (e.g. Kropelin et al., 2008; Francus et al., 2013). The timing of maximum Holocene rainfall in the Asian monsoon region strongly depends on the location (e.g. An et al., 2000) and the affecting monsoon sub-system (Maher, 2008; Maher and Hu, 2006). While moisture levels in the Indian monsoon region are highest during the early-Holocene, the East Asian monsoon did not reach maximum strength before the mid-Holocene (Herzschuh et al., 2006; Wang et al., 2010). On longer timescales, the precessional cycle is shared by most monsoon systems, but Chinese speleothems lag the insolation curve by 4 ka, northern African

records by 2.6 ka and Indian records by 8 ka (c.f. Caley et al., 2011 and references therein) showing no uniform response to the insolation forcing.

Various suggestions of possible explanations for the deviating precipitation trends exist, but so far the causal relationships are not clear. Among other reasons, the differences in rainfall trends could be attributed to previous misinterpretation of the data (Cheng et al., 2012 and references therein; Maher and Thompson, 2012) and/or differences in the characteristics of the monsoon sub-systems: at least partly, the monsoon response to the orbitally controlled insolation forcing is affected by differences in the land–sea settings (e.g. Wang et al., 2003, 2013; Wang, 2009) that probably has also an impact on the strength of involved ocean–atmosphere feedbacks. The Indian and North African monsoon circulations are determined by a meridional and interhemispheric land–ocean contrast, while the East Asian monsoon is characterised by a zonal land–sea contrast (Wang et al., 2001). Furthermore, the impact of other large-scale circulation systems (e.g. the westerly wind system) varies among the different monsoon sub-systems. For instance, the Indian monsoon system is less affected by mid- and high-latitude climate processes than the East Asian monsoon (Huang et al., 2012). All monsoon systems show differences in the seasonal cycle, particularly in the timing of onset, rainfall peak and withdrawal. These differences in the seasonality of the sub-monsoons may lead to differences in the response of the monsoon system to the Holocene change in seasonal insolation.

Thus, whether the monsoon systems evolve synchronously or asynchronously during the Holocene, i.e. if the global or regional aspect of monsoons predominates on millennial timescales, is still under debate. To investigate Holocene precipitation trends in different parts of the Afro-Asian monsoon region and to test the connectivity of the different monsoon sub-systems in this region, we analyse five transient climate simulations covering the last 6000 years, which have been performed using various coupled atmosphere–ocean–(vegetation)-models. We focus on the following research questions:

The evolution of the Afro-Asian monsoon during the Holocene

A. Dallmeyer et al.

Title Page

Abstract

Introduction

Conclusions

References

Tables

Figures



Back

Close

Full Screen / Esc

Printer-friendly Version

Interactive Discussion



The evolution of the Afro-Asian monsoon during the Holocene

A. Dallmeyer et al.

Title Page

Abstract

Introduction

Conclusions

References

Tables

Figures



Back

Close

Full Screen / Esc

Printer-friendly Version

Interactive Discussion



1. Can state-of-the-art climate models capture the reconstructed precipitation trends in the Afro-Asian monsoon region, e.g. retrieved from speleothem records?
2. Do the simulations reveal a synchronous precipitation response to the Holocene insolation forcing for all sub-domains, supporting the global monsoon hypothesis on longer time-scales?
3. If differences in the precipitation trend among sub-domains exist, which controlling mechanisms can be retrieved from the model results, for instance in the context of changes in the seasonal insolation cycle and differences in the seasonality of the monsoon sub-systems?

After a short description of the models, simulations and methods used in this study, we first assess the performance of the models concerning the representation of the modern precipitation distribution in the Afro-Asian monsoon domain (Sect. 3.1). The second part of the results deals with the precipitation change from mid-Holocene to present-day including a comparison of the precipitation trends in the different models (Sects. 3.2–3.4). Based on these results, we discuss whether the transient simulations support the global monsoon hypothesis for the Holocene monsoon evolution (Sect. 4.2) and analyse the effect of the differences in seasonality on the Holocene monsoon response (Sect. 4.3) as this is the only hypothesis for the deviating precipitation trends we can analyse with this setup of simulations.

2 Methods

2.1 Model description and experimental design

To investigate the Holocene rainfall trend in the Afro-Asian monsoon system, we analyse five transient climate model simulations that have been performed in a wide spectrum of coupled atmosphere–ocean–(vegetation) models (c.f. Table 1). In the following,

the models and simulations are introduced briefly; for further details on the simulations we refer to the original manuscripts.

2.1.1 COSMOS and COSMOSacc

COSMOS is the model of the Community Earth System models network, initiated by the Max Planck Institute for Meteorology, Hamburg, Germany. The model consists of the general circulation model for the atmosphere ECHAM5 (Roeckner et al., 2003) coupled to the land-surface scheme JSBACH (Raddatz et al., 2007) and the ocean model MPIOM (Marsland et al., 2003). In the version used in this study, JSBACH included the dynamic vegetation module of Brovkin et al. (2009) representing 8 different plant functional types. MPIOM was integrated with a horizontal resolution of approximately 3° and 40 levels in the vertical. ECHAM5 was set up in a spectral resolution of T31L19 corresponding to a longitudinal distance of approx. 3.75° on a great circle and 19 levels in the vertical.

In this setup, two transient experiments have been performed. The first one (COSMOS) was conducted by Fischer and Jungclaus (2011) and started at mid-Holocene climate conditions (6000 years ago). The model was brought to quasi-equilibrium climate state prescribing mid-Holocene insolation forcing and pre-industrial atmospheric conditions (e.g. CO₂-composition of 280 ppm). Afterwards, the orbital configuration was being changed yearly until present-day conditions were reached. The chemical composition of the atmosphere stayed constant during the entire simulation. This simulation covers the last 6000 years. The data of this simulation is available as snapshots (every 50 years) on the PANGAEA database (Fischer and Jungclaus, 2012).

The second simulation (COSMOSacc) was performed by Pfeiffer et al. (Varma et al., 2012; Pfeiffer and Lohmann, 2013) in the same way as the first simulation, but using an orbital forcing accelerated by a factor of 10. This means, the period between mid-Holocene and present-day is represented by only 600 instead of 6000 model years. The chemical composition of the atmosphere was fixed to pre-industrial values. Similar experiments were also carried out by Lorenz and Lohmann (2004) with

The evolution of the Afro-Asian monsoon during the Holocene

A. Dallmeyer et al.

Title Page

Abstract

Introduction

Conclusions

References

Tables

Figures



Back

Close

Full Screen / Esc

Printer-friendly Version

Interactive Discussion



the ECHO-G model using the acceleration technique for investigations of the climate of the Holocene.

2.1.2 ECHO-G

ECHO-G (Legutke and Voss, 1999) consists of the atmospheric general circulation model ECHAM4 (Roeckner et al., 1996) and the ocean model HOPE-G (Wolff et al., 1997). A dynamic vegetation model was not included in this setup. The vegetation is set to present-day conditions throughout the entire simulations. ECHAM4 had a numerical resolution of T31L19 corresponding to approx. 3.75° on a great circle and 19 levels in the vertical. HOPE-G had 20 irregularly spaced vertical levels and an effective horizontal resolution of $2.8^\circ \times 2.8^\circ$ increasing to 0.5° towards the equator. In contrast to the newer COSMOS generation the ECHO-G model is flux corrected for heat and fresh water in order to avoid climate drift. The model was brought to a quasi-equilibrium climate state using mid-Holocene (7 k) orbital configuration (Wagner et al., 2007). Afterwards the insolation forcing was changed after each model year. In the transient simulation used in this study, the chemical composition of the atmosphere was kept constant at pre-industrial levels. The first part of this simulation (7000 BP–4500 BP) is available on the CERA database (Wagner, 2007).

2.1.3 PLASIM

PlaSim is an atmosphere model of medium complexity (Fraedrich et al., 2005) and was used in a horizontal resolution of T21 (approx. $5.6^\circ \times 5.6^\circ$ on a Gaussian grid) and ten levels in the vertical. In the simulation used for this study (Haberhorn, 2013), PlaSim was coupled to the ocean model LSG (Maier-Reimer et al., 1993) and the vegetation module SimBA (Kleidon, 2006). The model had been brought to quasi-equilibrium on early-Holocene climate conditions (10 k orbit and atmospheric composition). Then the transient simulation was started using yearly adapted orbital forcing (Berger, 1978). Holocene variations in atmospheric CO_2 -concentration were additionally prescribed

The evolution of the Afro-Asian monsoon during the Holocene

A. Dallmeyer et al.

Title Page

Abstract

Introduction

Conclusions

References

Tables

Figures



Back

Close

Full Screen / Esc

Printer-friendly Version

Interactive Discussion



The evolution of the Afro-Asian monsoon during the Holocene

A. Dallmeyer et al.

Title Page

Abstract

Introduction

Conclusions

References

Tables

Figures

◀

▶

◀

▶

Back

Close

Full Screen / Esc

Printer-friendly Version

Interactive Discussion



from Taylor Dome reconstructions (Indermuhle, 1999). For instance, atmospheric CO₂-content was changed from 265–269 ppm during the mid-Holocene to the pre-industrial level (280 ppm). The effect of increasing CO₂ during the pre-industrial Holocene is relatively small compared to changes in orbital forcing. Therefore, we do not expect any substantial impact of the varying CO₂-concentration on the results of this study. Here, the last 6000 years of this simulation were used.

2.1.4 KCM

The Kiel Climate Model (KCM, Park et al., 2009) is a coupled atmosphere–ocean–sea ice general circulation model. The atmosphere is represented by ECHAM5 (Roeckner et al., 2003) that ran in the numerical resolution T31L19 corresponding to 3.75° on a great circle. ECHAM5 is coupled to the ocean–sea ice model NEMO (Madec, 2006) that ran with a horizontal resolution of approx. 2° × 2° and increased meridional resolution (0.5°) close to the equator. The coupled model had been brought to quasi-equilibrium climate state with early-Holocene orbital configuration (9.5 k) before the transient simulation started using orbital forcing only (Jin et al., 2014). The forcing, i.e. change in orbital parameters, was accelerated by a factor of 10. The chemical composition of the atmosphere was set to constant pre-industrial values throughout the simulation. KCM shows good agreement between simulated precipitation and observations for contemporary climate, as well as with the hydrological changes during the mid-Holocene (Khon et al., 2010).

2.2 Analyses methods of model results

2.2.1 Definition of the time-slices

We compare the simulated climate of the mid-Holocene (6000 years ago, further referred to as 6 k) and pre-industrial time-slice (here referred to as 0 k). The results are based on climatological means of 120 years, i.e. 120 model years in the non-

accelerated experiments and 12 model years in the accelerated experiments. We are aware of the short period used to represent the accelerated simulations. Therefore, we calculated the statistical significance of the rainfall change using the student's *t* test and only show results that are significant on a 95 %-level in case of the non-accelerated simulations and significant on a 90 %-level in case of the accelerated simulations. Thereby, the main aim is the assessment of the physical significance of the rainfall change.

2.2.2 Inference of rainfall trends and comparison of regional time-series

The different sub-regions presented in this study (cf. Fig. 1) have been defined on the basis of the leading Empirical orthogonal function (EOF) mode of the precipitation variations. For this purpose, the ensemble mean of the non-accelerated simulations (i.e. COSMOS, ECHO-G and PLASIM) has been standardized and detrended by a 500 year running mean. The EOF was calculated afterwards for the African, the Southern Arabian, the Indian and eastern Asian regions. The monsoon sub-systems are selected based on the areas showing the highest loadings in the respective region. The East Asian monsoon domain is divided into two sub-regions, as it is commonly characterised by bipolar precipitation pattern in present-day observations, e.g. floods in the north, droughts in the south (e.g. Ding, 2007).

The rainfall trend series in the different sub-regions are based on 100 year running means and are displayed as anomalies with respect to the last time-step representing the pre-industrial climate. To calculate the correlations among the different monsoon-sub-regions, the time-series has been detrended by a 500 year running mean. Similar as for the time-slice results, the seasonal cycle in each sub-region has been calculated on climatological monthly means of 120 years.

The evolution of the Afro-Asian monsoon during the Holocene

A. Dallmeyer et al.

Title Page

Abstract

Introduction

Conclusions

References

Tables

Figures



Back

Close

Full Screen / Esc

Printer-friendly Version

Interactive Discussion



3 Results

3.1 Model evaluation with respect to the pre-industrial Asian and North African monsoon climate

In order to get an overview of the representation of the pre-industrial control climate in the different models we compare the simulated precipitation and 850 hPa summer wind field with the Global Precipitation Climatology Project precipitation data (GPCP, Adler et al., 2003) and modern (present-day) European Centre for Medium Range Forecast Reanalysis data (ERA, Uppala et al., 2005). As the pre-industrial simulations have been performed with CO₂-concentration of 280 ppm, considerably lower than those observed for present-day, we expect small biases particularly in the strength of the monsoon system and precipitation amount resulting from the different CO₂-levels.

3.1.1 Evaluation of the annual precipitation pattern

In general, the models show similar discrepancies to the observed precipitation pattern, but the amplitude of the biases differs (Fig. 2). All models tend to overestimate annual precipitation in the East Asian monsoon region. This is particularly pronounced in the area between the Yangtze and Huanghe River in eastern China, east of the Tibetan Plateau (100–120° E, 25–35° N) where pre-industrial annual precipitation exceeds the modern observations by more than 750 mm year⁻¹ in most simulations and the ensemble mean.

In contrast, precipitation in the Indian monsoon region is highly underestimated in all models, particularly in Bangladesh exceeding -750 mm year⁻¹. With the exception of ECHO-G showing more precipitation than observed, all other models also underestimate precipitation by more than 300 mm year⁻¹ in large parts of northern Africa. Above the tropical oceans, the models simulate considerably higher precipitation compared to observations. However, over these oceanic areas, precipitation observations are also afflicted with higher uncertainty.

The evolution of the Afro-Asian monsoon during the Holocene

A. Dallmeyer et al.

Title Page

Abstract

Introduction

Conclusions

References

Tables

Figures



Back

Close

Full Screen / Esc

Printer-friendly Version

Interactive Discussion



Averaged over the entire monsoon region of North Africa and Asia (including oceanic areas), COSMOS, COSMOSacc and KCM simulate too much precipitation, PLASIM too little precipitation and ECHO-G simulates similar rainfall as observed. To further quantify the biases between simulated and observed precipitation, we analysed a Taylor diagram (Fig. 3) and use the standard deviation summed up over all grid-boxes as simple measure for the overall model bias (Table 2). Overall, ECHO-G shows the smallest bias in absolute precipitation, has a similar spatial and temporal variability as observed precipitation and compares best with the observed precipitation pattern. PLASIM underestimates the variability slightly and shows the lowest correlation. KCM, COSMOSacc, and COSMOS demonstrate a very similar skill to simulate the North African and Asian monsoon precipitation. Those models slightly overestimate the variability, but show a good pattern correlation. The ensemble mean reveals the best pattern correlation and also the highest agreement in terms of temporal variability.

3.1.2 Evaluation of the seasonal precipitation cycle

To assess the performance of the models with respect to the seasonal precipitation cycle, the simulated pre-industrial seasonal precipitation cycle for each sub-region is compared to the seasonal cycle derived from present-day GPCP data (Fig. 4): during present-day, the rainy season in the North African monsoon (NAM) region starts in March with rainfall continuously increasing to a rainfall peak of 4 mm day^{-1} in August. Afterwards precipitation declines until October. This seasonal cycle is simulated correctly by all models with the exception of ECHO-G which strongly overestimates precipitation during March to July, leading to peak rainfall already in July. COSMOS, COSMOSacc, and KCM simulate a similar seasonal cycle as observed but underestimate rainfall rates during the entire rainy season (at summer peak by $1\text{--}2 \text{ mm day}^{-1}$). PLASIM reveals less than 0.5 mm day^{-1} as precipitation peak which are typical rainfall rates in (semi-)arid regions. Thus, with respect to precipitation PLASIM does not identify the North African monsoon as monsoon region.

The evolution of the Afro-Asian monsoon during the Holocene

A. Dallmeyer et al.

[Title Page](#)

[Abstract](#)

[Introduction](#)

[Conclusions](#)

[References](#)

[Tables](#)

[Figures](#)



[Back](#)

[Close](#)

[Full Screen / Esc](#)

[Printer-friendly Version](#)

[Interactive Discussion](#)



The observed precipitation maximum over the Indian monsoon region (ISM) is reached during July following a very rapid increase of rainfall starting in May. None of the models captures this seasonal cycle. In PLASIM, the rainy season is very short. Precipitation starts to increase as late as July and peaks not until September. Rainfall rates are strongly underestimated during the entire rainy season. COSMOS, COSMOSacc, and KCM reveal a similar monsoon season length as observed, but simulate a double-peak monsoon in July and September. However, also these models underestimate precipitation during the entire rainy season, particularly KCM by up to 3 mm day^{-1} . Precipitation rates rise slower in ECHO-G than observed and the monsoon peak is shifted by one month to August. Rainfall rates are much lower compared to observations.

The observed seasonal precipitation cycle in the East Asian monsoon area (EASM) is different to the cycle in the tropical monsoon regions of Africa and India. Over this region, precipitation occurs during the entire year reaching rainfall rates of $1\text{--}2 \text{ mm day}^{-1}$ during winter and spring. Nevertheless, the temporal rainfall distribution reflects a monsoonal character with summer dominant rainfall and much higher precipitation rates in summer than in winter. Maximum rainfall is reached during June with approx. 6 mm day^{-1} . All models except PLASIM are able to simulate this seasonal cycle. However, winter and spring precipitation is strongly overestimated by $1\text{--}2 \text{ mm day}^{-1}$ leading to a rainfall peak already in May. During summer, simulated rainfall rates are as observed in most models. ECHO-G simulates rainfall rates similar to observed until May; afterwards precipitation rates are decreasing and underestimated until September. PLASIM strongly overestimates the late summer, autumn and winter precipitation.

The observed seasonal precipitation cycle in the northern East Asian monsoon region (NEASM) is characterised by weak winter/spring rainfall rates and high summer rainfall rates, although being much less than in the other parts of the monsoon domain with maximum precipitation rate of only 2.7 mm day^{-1} in July. Most models capture the seasonal cycle, but slightly overestimate precipitation year round by approx. 0.5 mm day^{-1} . ECHO-G simulates too little summer precipitation. Similar as for the East

Asian monsoon region, PLASIM strongly overestimates precipitation during the entire year.

3.1.3 Evaluation of the monsoon flow (850 hPa wind field)

The summer-half year (MJJASO) wind field in the Afro-Asian monsoon region shows a number of characteristic features (Fig. 5): the strongest large-scale systems are the southeast and northeast trade winds, the circulation around the vast subtropical highs, i.e. the Azores high and the western Pacific subtropical high, and the strong Indian monsoon circulation that is canalized at the Ethiopian highlands in the so called Somali jet reaching winds speeds by approx. 10 ms^{-1} in the summer mean. The North African monsoon circulation is only weakly pronounced due to the inclusion of May and October in the averaging period.

All models are able to simulate the summer circulation pattern in 850 hPa, but they differ in strength of the simulated large-scale circulation systems. COSMOS, COSMOSacc, and KCM overestimate the Somali jet and the circulation over the western Pacific leading to a too strong Indian and East Asian summer monsoon circulation. In contrast, the African monsoon is weaker and the northeast trade winds above the Sahara are stronger than observed in these models. ECHO-G and particularly PLASIM underestimate the Indian and the African monsoon flows. The East Asian monsoon circulation on land is similar to the observed in ECHO-G and overlapped by the Indian monsoon flow in PLASIM. These results show that, at least in the Indian monsoon region, the deficits in simulated rainfall are not related to biases in the large-scale circulation pattern.

CPD

10, 2293–2353, 2014

The evolution of the Afro-Asian monsoon during the Holocene

A. Dallmeyer et al.

Title Page

Abstract

Introduction

Conclusions

References

Tables

Figures

⏪

⏩

◀

▶

Back

Close

Full Screen / Esc

Printer-friendly Version

Interactive Discussion



3.2 Mid-Holocene climate

3.2.1 Changes in annual precipitation pattern

Figure 6 shows the simulated mean annual precipitation difference between mid-Holocene and pre-industrial. All models simulate an increase in precipitation in the North African and Indian monsoon regions during mid-Holocene compared to pre-industrial. In most models, these changes are connected with a shift in the Intertropical Convergence Zone (ITCZ) indicated by the bipolar difference in precipitation pattern between ocean and land, particularly in northern Africa. This pattern is consistent with the increase in Northern Hemisphere summer insolation (Kutzbach, 1981). The largest changes occur in COSMOS and KCM revealing an increase in precipitation by more than 500 mm year^{-1} in large parts of the monsoon region.

In the North African monsoon area, the simulated magnitude of precipitation change differs strongly among the models. ECHO-G reveals a relatively weak response to the insolation change with an increased mid-Holocene precipitation by less than 200 mm year^{-1} . PLASIM shows a significant rise in rainfall in entire northern Africa including the Sahara, but the strongest changes are concentrated around the Equator. COSMOS, COSMOSacc, and KCM indicate the strongest increase in precipitation in a broad area between the Equator and 20° N (by up to 400 mm day^{-1}). Regarding the precipitation increase in the Indian monsoon region, the models are in better agreement among each other. All models show a relatively strong response in a broad region extending from India to the central Tibetan Plateau (up to 650 mm year^{-1} in KCM). COSMOSacc is the only model revealing no significant signal.

In contrast to the increased North African and Indian monsoon rainfall during the mid-Holocene, the models tend to simulate less precipitation in the core regions of the East Asian monsoon domain. In PLASIM, precipitation decreases by approx. 200 mm year^{-1} in Indochina, eastern China, and over the western Pacific ocean. COSMOS and COSMOSacc reveal a significant reduction of precipitation only in central-eastern China (up to 300 mm year^{-1}). In ECHO-G, the decrease in precipitation is

limited to the Indochina Peninsula and the western Pacific. The strong inter-model discrepancies concerning the rainfall change in the East Asian monsoon region lead to a non-significant signal in the ensemble mean.

Figure 6 additionally shows pollen-based precipitation reconstructions (Bartlein et al., 2010) plotted on top of the simulated precipitation changes. Overall, the simulated rainfall difference between mid-Holocene and pre-industrial agree well with reconstructions which reveal substantially increased mid-Holocene precipitation at most sites. However, the models tend to underestimate the precipitation change, particularly in northern Africa and eastern China.

3.2.2 Changes in summer to annual precipitation ratio

Monsoon regions are characterised by high summer and low winter precipitation rates. Therefore, monsoon regions can be identified by the annual rainfall range ($> 5 \text{ mm day}^{-1}$) and the ratio of summer to annual rainfall. Here, we use one main criterion of Wang and LinHo (2002) defining the 55 % isoline of this ratio as limit for monsoonal climate. Figure 7 shows the simulated difference in the ratio of summer to annual precipitation between mid-Holocene and pre-industrial times together with the 55 %-isolines at 6 k (blue) and 0 k (grey). The simulated pre-industrial monsoon domain extends over large parts of northern Africa, India, Indochinese Peninsula and eastern China. As the annual rainfall range outside the Tropics only exceeds 5 mm day^{-1} in few areas, the regions north of approx. 40° N (e.g. Mongolia and North-eastern China) are only characterised by monsoon-like climate, but do actually not belong to the monsoon domain. For the pre-industrial period, the simulated Asian monsoon extent is similar in the different models, but strong discrepancies can be seen in the North African monsoon region. The northern border of monsoon characteristic climate range from 20° N in PLASIM to approx. 30° N in ECHO-G reflecting the large differences in annual rainfall bias.

During mid-Holocene, the monsoon regions are slightly extended. Several regions experience a more monsoon-like climate, i.e. large parts of the area along the pre-

The evolution of the Afro-Asian monsoon during the Holocene

A. Dallmeyer et al.

Title Page

Abstract

Introduction

Conclusions

References

Tables

Figures



Back

Close

Full Screen / Esc

Printer-friendly Version

Interactive Discussion



industrial monsoon margin where the ratio of summer to annual precipitation is increased by up to 15 % (in KCM, ECHO-G, and COSMOS), the Saharan region where this ratio increases by more than 20 % (in COSMOSacc, COSMOS, and PLASIM) and Arabia (particularly in PLASIM and ECHO-G).

3.3 Change in the seasonal precipitation cycle

Figure 8 shows the simulated change in the seasonal precipitation cycle between mid-Holocene and pre-industrial for the different monsoon sub-regions:

For the mid-Holocene time-slice, the models reveal a consistent picture regarding the shape of change in the North African seasonal precipitation cycle (NAM), but they vary regarding the amplitude. Precipitation is increased from June to November revealing the strongest signal in August (PLASIM, ECHO-G, and KCM) and September (COSMOS, COSMOSacc). The most intensive response is shown in COSMOS with peak signal of up to 3.5 mm day^{-1} . The weakest response occurs in PLASIM with maximum values of 0.5 mm day^{-1} at most. The maximum precipitation difference between mid-Holocene and pre-industrial time-slice in the North African monsoon region coincide with the present-day monsoon season peak, suggesting a strong intensity change of the North African monsoon and not a postponement of the monsoon season.

Similar as for the North African monsoon region, all models simulate increased precipitation during summer and autumn (May–November) in the Indian monsoon region (ISM) during mid-Holocene with maximum precipitation values in August (PLASIM, KCM, and ECHO-G) and September (COSMOS, COSMOSacc). PLASIM and KCM reveal the strongest response with 2.5 and 2.2 mm day^{-1} at most, respectively. In the other models, the magnitude of rainfall change is similar with maxima ranging from 1.2 to 1.6 mm day^{-1} .

The simulated seasonal precipitation change in the East Asian monsoon region (EASM) from mid-Holocene to pre-industrial is very different to the change in the tropical monsoon domain because precipitation reacts to the insolation forcing year-round. In most models, winter and spring precipitation are substantially reduced by

The evolution of the Afro-Asian monsoon during the Holocene

A. Dallmeyer et al.

Title Page

Abstract

Introduction

Conclusions

References

Tables

Figures



Back

Close

Full Screen / Esc

Printer-friendly Version

Interactive Discussion



up to 1 mm day^{-1} (1.5 mm day^{-1} in KCM). Summer monsoon rainfall is increased by 0.5 mm day^{-1} (PLASIM) to 1.3 mm day^{-1} (COSMOS) at most. The strongest enhancement of rainfall occurs in July (ECHO-G, PLASIM), August (KCM) and September (COSMOS).

Most models simulate slightly decreased precipitation in the Northern East Asian monsoon region (NEASM) during mid-Holocene winter and spring. This signal is particularly pronounced in PLASIM (0.5 mm day^{-1} at most). During summer, rainfall increases in all models by up to 0.8 mm day^{-1} (COSMOS). Maximum precipitation is reached in July (KCM) or August. PLASIM shows a very weak response to changes in the summer insolation and simulates only slightly more precipitation during October.

The seasonal precipitation change indicates that the annual rainfall signals in the African and Indian monsoon region are mostly related to an increase in summer monsoon precipitation. In contrast, the decrease in rainfall in parts of the East Asian monsoon area (cf. Fig. 6) can not be explained by summer monsoon changes alone. With the exception of PLASIM, precipitation is also increased in most parts of the East Asian monsoon domain during the summer monsoon season revealing that the decrease in precipitation is related to changes in the pre-monsoon season as previously pointed out in Dallmeyer et al. (2013).

3.4 Rainfall trend

Figure 9 shows the evolution of rainfall in the different sub-monsoon regions based on the non-accelerated climate simulations since the accelerated simulations reveal a strong year-to-year variability. The time-series are smoothed by a 100 year running mean to filter out interannual and interdecadal variability. The significance of the trend is estimated by the signal to noise ratio. Correlation coefficients between the rainfall time-series of the different monsoon sub-systems are calculated for the original time-series detrended by 500 year moving averages.

CPD

10, 2293–2353, 2014

The evolution of the Afro-Asian monsoon during the Holocene

A. Dallmeyer et al.

Title Page

Abstract

Introduction

Conclusions

References

Tables

Figures



Back

Close

Full Screen / Esc

Printer-friendly Version

Interactive Discussion



The evolution of the Afro-Asian monsoon during the Holocene

A. Dallmeyer et al.

Title Page

Abstract

Introduction

Conclusions

References

Tables

Figures



Back

Close

Full Screen / Esc

Printer-friendly Version

Interactive Discussion



For the North-African region, all models show a highly statistically significant ($> 99\%$) negative rainfall trend ranging from 40 mm/6000 years (PLASIM) to 280 mm/6000 years (COSMOS). The trends are relatively linear, but all models suggest a stronger trend in the first 4000 years, i.e. from 6 k to 2 k, than in the last 2000 years of the simulations.

Both, ECHO-G and COSMOS reveal periods of long-lasting dry and wet phases interrupting the general trend.

The simulated rainfall trend over Southern Arabia is similar as for northern Africa. ECHO-G and COSMOS show a highly significant ($> 99\%$) negative trend of 80 mm/6000 years and 240 mm/6000 years, respectively. PLASIM, however, reveals no trend in this region. Similar to the conditions in northern Africa, the decrease in precipitation is stronger between 6 k and 2 k than afterwards. COSMOS is the only model that shows a moderate positive correlation ($r = +0.53$, s. Table 3) between the precipitation variability over northern Africa and Southern Arabia. In the other models, the precipitation variability over those regions evolves independently.

For the Indian monsoon region, all models indicate a similar decreasing trend of 130–160 mm/6000 years. This trend is highly significant ($> 99\%$) and linear, but superimposed by several long-lasting dry and wet periods. For instance, COSMOS, and to a minor extent ECHO-G, reveal a prominent long-lasting dry period around 2 k. PLASIM simulates less precipitation compared to pre-industrial times for some periods in the last 2000 years. The evolution of precipitation signal simulated by COSMOS shows moderate positive correlation with the precipitation variability over Southern Arabia ($r = +0.55$) and northern Africa ($r = +0.38$). In ECHO-G and PLASIM, Indian rainfall is only weakly correlated with rainfall over northern Africa ($r = +0.31$ and $r = +0.27$, respectively).

The models disagree regarding the sign of the precipitation trend over the East Asian monsoon region. COSMOS and PLASIM indicate a slightly increasing trend during the Holocene of 20 mm/6000 years (significant on 90 %-level) and 80 mm year⁻¹ (significant on 99 %-level), respectively. In contrast, ECHO-G reveals a slightly decreasing trend 20 mm/6000 years (significant on 95 %-level). The trends are generally linear, but

The evolution of the Afro-Asian monsoon during the Holocene

A. Dallmeyer et al.

Title Page

Abstract

Introduction

Conclusions

References

Tables

Figures

◀

▶

◀

▶

Back

Close

Full Screen / Esc

Printer-friendly Version

Interactive Discussion



the area is characterised by stronger variability than for the other monsoon regions. At 3.8 k and 2.3 k ECHO-G indicates periods with strongly increased precipitation. Most models suggest no correlation between the rainfall over eastern China and over India or northern Africa, only ECHO-G reveals a weak negative correlation with the precipitation variability over India ($r = -0.19$).

For the northern part of the East Asian monsoon region, ECHO-G and COSMOS show a highly significant decreasing trend since the mid-Holocene (40 mm/6000 years and 80 mm/6000 years, respectively). PLASIM suggests an increasing precipitation trend. While the rainfall trend is linear in ECHO-G and PLASIM, precipitation stays relatively constant until 4.5 k in COSMOS and decreases linearly afterwards. The rainfall variability over the northern part of the East Asian monsoon region simulated by COSMOS is moderately correlated with precipitation over northern Africa ($r = +0.36$), Southern Arabia ($r = +0.34$), and India ($r = +0.5$) and weakly correlated with precipitation in the southern part of the East Asian monsoon region ($r = +0.19$). ECHO-G also shows weak correlation between the precipitation variability over these areas.

4 Discussion

4.1 Performance of the models

Recent studies have identified that climate models reveal large deficits in representing the mean precipitation distribution, seasonal cycle, and interannual variability of monsoon systems (Kang et al., 2002; Randall et al., 2007; Boo et al., 2011). Common state-of-the-art atmosphere models show poor reproducibility of recent variations in the monsoon circulation and precipitation (Zhou et al., 2009 and references therein). Reasons for this might be the large internal variability of monsoons (Krishnamurti et al., 2006) or deficits in parametrisations of the convective processes in the tropics.

The climate models used in this study overestimate annual precipitation in the subtropical East Asian monsoon region and underestimate annual rainfall in the tropical

monsoon regions. However, with few exceptions they are able to capture the seasonal precipitation cycle and the climatological interannual variability in the different monsoon sub-systems.

The simulated mid-Holocene climate agrees well with reconstructions in most parts of the monsoon area regarding the sign of precipitation change. However, the amplitude is too weak. This result is also shown in other model intercomparison studies, e.g. based on the simulations undertaken in the Paleoclimate Modelling Intercomparison Project (PMIP, Zhao and Harrison, 2011). Thus, reconstructions may also overestimate the Holocene precipitation change as there is some degree of uncertainty in the reconstructions. As the systematic model biases (e.g. biases related to parametrisations) are probably similar for the present-day time-slice and the rest of the transient simulations, we assume that biases in precipitation do not affect the general credibility of results inferred in this study as long as only differences to the present-day time-slice are analysed. Nevertheless on a local scale, the seasonal biases in precipitation may affect the simulated Holocene climate. For instance, due to the overestimation of modern spring precipitation in eastern China, the models might react too sensitively to the insolation forcing during spring. This would lead to a too strong decrease of rainfall during spring, overcompensating the increase in summer monsoon rainfall at mid-Holocene.

4.2 Global vs. regional monsoon

In recent years, the concept of “global monsoon” has been introduced, interpreting monsoon systems as part of one global-scale atmospheric overturning circulation in the tropics and subtropics implying a connection between the regional monsoon systems and an in-phase behaviour of all monsoons on annual timescales (Trenberth et al., 2000). Whether the global monsoon concept can be applied to past climates and variability on longer timescales is not yet clear (Trenberth et al., 2000). Although recent palaeo-studies support the global monsoon hypothesis (Cheng et al., 2012; Liu et al., 2012), there are many arguments for a rather regional behaviour and at least regional characteristics of the different monsoon systems in modern observations and palaeo-

The evolution of the Afro-Asian monsoon during the Holocene

A. Dallmeyer et al.

Title Page

Abstract

Introduction

Conclusions

References

Tables

Figures



Back

Close

Full Screen / Esc

Printer-friendly Version

Interactive Discussion



The evolution of the Afro-Asian monsoon during the Holocene

A. Dallmeyer et al.

Title Page

Abstract

Introduction

Conclusions

References

Tables

Figures



Back

Close

Full Screen / Esc

Printer-friendly Version

Interactive Discussion



records. For the Holocene, several studies report an asynchronous rainfall trend in different parts of the Asian monsoon region (An et al., 2000; Maher, 2008) and an out-of-phase evolution of the Indian and East Asian monsoon (Maher and Hu, 2006; Wang et al., 2010). Some records suggest an abrupt end of the humid period in the North African monsoon area (e.g. deMenocal et al., 2000), whereas other records suggest a gradual decrease in rainfall during the Holocene (e.g. Kropelin et al., 2008; Francus et al., 2013).

The transient simulations used in this study reveal continuously decreasing precipitation in nearly all sub-monsoon regions since mid-Holocene. This agrees with most reconstructions and underscores that the orbitally induced insolation change determines the Holocene rainfall trend pattern. However, compared to the reconstructions of Bartlein et al. (2010), the amplitude of precipitation change is underestimated by the models. Abrupt changes such as those recorded in the North African monsoon region can not be seen in the model results, but we chose a relatively large area representing the North African monsoon eventually smoothing out drastic changes. On local scale, abrupt changes might be possible (e.g. Bathiany et al., 2012).

In eastern China, most models suggest an increase in precipitation during the Holocene that is not supported by the speleothem records in this region (Fig. 10). However, several other reconstructions report an increasing trend (c.f. Wang et al., 2010 and references therein; Dallmeyer et al., 2013). This conflict between cave records and other reconstructions may result from a previous misinterpretation of the data. Recent studies pointed out that cave records in eastern China may not reflect absolute rainfall or summer rainfall, but rather represent the moisture source (Maher, 2008; Cheng et al., 2012 and references therein; Maher and Thompson, 2012). As the caves in China are located in the influence region of the East Asian and the Indian monsoon as well as the westerly wind system, the cave records may indicate the relative strength of the circulation systems. The moist air transported by the East Asian monsoon (oceanic source) is isotopically less depleted than the air masses transported in the Indian monsoon. A weakening of the Indian monsoon during the Holocene and the associated reduction

The evolution of the Afro-Asian monsoon during the Holocene

A. Dallmeyer et al.

Title Page

Abstract

Introduction

Conclusions

References

Tables

Figures



Back

Close

Full Screen / Esc

Printer-friendly Version

Interactive Discussion



in the inland penetration into eastern China may have strengthened the influence of the East Asian monsoon by increasing the transports of less depleted air from the Pacific to the caves (Maher and Thompson, 2012). Indeed, the transient simulations reveal an enhanced vertically integrated moisture flux from the Indian summer monsoon region into eastern China during mid-Holocene (see Fig. 11). However, they do not agree with each other regarding the modern moisture flux. COSMOS shows a strong summer moisture transport from the Pacific to eastern China during pre-industrial times, i.e. a strong East Asian summer monsoon: in ECHO-G, the vertically integrated moisture flux is dominated by the Westerlies. In PLASIM, the Indian monsoon is still prominent in eastern China at 0 k. The misinterpretation of the cave records may be one possible reason for the discrepancies between the model results and the reconstructions. However, most models overestimate present-day spring precipitation in eastern China. The increasing rainfall trend during the Holocene mainly results from a strong increase of spring precipitation which overcompensates the reduction in summer monsoon precipitation. This signal may not be realistic for the entire region. Due to the coarse resolution, the models can probably simulate the large-scale response to the Holocene insolation forcing, but not specific regional or local details (c.f. Dallmeyer et al., 2013).

Overall, the transient simulations modify the global monsoon hypothesis, at least on centennial timescales. Although the Holocene long-term rainfall trend is synchronous in most monsoon sub-systems, the temporal variability is very different. In this context, the model results rather suggest a differentiation between tropical and sub-tropical monsoon systems. The North African and the Indian monsoon (both tropical monsoons) are correlated in all models, i.e. both monsoon systems show a similar response to the insolation forcing, which can be explained by their strong connection to shifts in the global Intertropical Convergence Zone. The East Asian monsoon (sub-tropical) is not robustly correlated with the tropical monsoon systems in the models. Only COSMOS reveals a connection between the rainfall in northern Africa, India, and the northern part of the East Asian monsoon region (NEASM). In this model, the moisture flux from

India towards northern China is enhanced during mid-Holocene, probably explaining the strong connectivity of these monsoon sub-systems (cf. Fig. 11).

4.3 Effect of seasonality on the Holocene precipitation trend

Figure 12 displays the pentad of monsoon onset and withdrawal as well as the month of rainfall peak in the Afro-Asian monsoon region based on the observational dataset of the Climate Prediction Centre (CMAP, 1979–2008; Xie and Arkin, 1997). In comparison to local observations, the onset is slightly too early (c.f. e.g. Wang and LinHo, 2002), the withdrawal and peak are well presented in CMAP. The figure reveals large differences in seasonality among the individual monsoon subsystems. The Indian monsoon season starts during June and moves to its northern position during early July. Maximum precipitation rates are reached at July and the monsoon season ends during September–October. The North African monsoon breaks out slightly later at the end of June–July. Monsoon rainfall rates are strongest during July–August and the monsoon retreats during September–October. In contrast, the East Asian monsoon season already starts during May-early June in large parts of eastern China. Maximum rainfall occurs during June and the monsoon season already ends in July–August. Thus, the East Asian monsoon season is short compared to the tropical monsoons and the maximum rainfall rates are observed early in the monsoon season. To analyse the influence of these differences in the onset, peak, and withdrawal of the monsoon sub-systems on the Holocene precipitation trend, the analysis is extended to the early-Holocene (further referred to as 9 k).

The precession of the Equinoxes leads to shifts in the date of Perihelion, i.e. the date of smallest distance between Sun and Earth. Every 1900 years, Perihelion is shifted by one month (Ruddiman, 2008). At present-day, Perihelion occurs early in January, leading to rather warm winters and mild summers in the Northern Hemisphere. During early-Holocene (9 k), the date of Perihelion was in August and at mid-Holocene (6 k) by the end of September. This change in Perihelion determines the time of maximum insolation change compared to present-day. Thus, maximum insolation change coincides

The evolution of the Afro-Asian monsoon during the Holocene

A. Dallmeyer et al.

Title Page

Abstract

Introduction

Conclusions

References

Tables

Figures



Back

Close

Full Screen / Esc

Printer-friendly Version

Interactive Discussion



The evolution of the Afro-Asian monsoon during the Holocene

A. Dallmeyer et al.

Title Page

Abstract

Introduction

Conclusions

References

Tables

Figures



Back

Close

Full Screen / Esc

Printer-friendly Version

Interactive Discussion



with peak rainy season in northern Africa and India during early-Holocene and coincides with late monsoon season at mid-Holocene. For the East Asian monsoon system, maximum insolation occurs at the end of the rainy season during early-Holocene and after the rainy season at mid-Holocene. How do these zonally uniform insolation changes affect the sub-monsoon regions that have such different seasonal cycles?

Considering only insolation variations as forcing for Holocene precipitation changes, several hypotheses can be proposed:

1. Hypothesis: the increase in summer monsoon precipitation compared to present-day is larger at 9 k than at 6 k, because the maximum insolation change at 9 k is larger and in phase with the present-day monsoon season.
2. Hypothesis: the shift in maximum insolation change from summer at 9 k towards autumn in 6 k should lead to an intensification of the summer monsoon at 9 k and a prolongation of the monsoon season at 6 k in comparison to present-day.
3. Hypothesis: the East Asian monsoon does not benefit as much as the tropical monsoon systems from the enhancement of summer insolation in the early- and mid-Holocene because the maximum insolation increase occurs after the present-day monsoon season.

In the following, these hypotheses are discussed based on the transient climate simulation performed in the Kiel Climate Model (KCM), because this is the sole simulation in the here considered transient simulations that covers the early-Holocene and have been undertaken in a comprehensive global climate model. Furthermore, the synthesis of reconstruction drawn by Wang et al. (2010) are analysed regarding the timing of wettest period during the Holocene to see whether the differences in seasonality among the sub-monsoon system lead to systematic differences in the Holocene rainfall optimum.

4.3.1 What does the transient simulation performed in KCM shows?

The impact of insolation on past monsoon climates has been analysed intensively with climate models before. However, only few studies concentrate on the aspect of dis-
similar seasonality in different sub-monsoon systems and on how the response to or-
bitally induced insolation forcing might be affected by this seasonality. Braconnot and
Marti (2003) point out that the response of the monsoon circulation depends on the
timing of maximum summer insolation change and that the timing of seasonal cycle
may explain the leads and lag times between insolation forcing and monsoonal recon-
structions. The Indian monsoon is particularly strong in case of maximum insolation
right before or early in the monsoon season (during May/June). The increase in rainfall
is larger over Southeast Asia than over India in case of a later forcing (July). Marzin
and Braconnot (2009) showed in coupled atmosphere–ocean model simulations with
prescribed insolation forcing that the relative intensification of the Indian and African
monsoons are partly determined by the changes in seasonality as the monsoon sys-
tem is enhanced at most, when the insolation forcing is in phase with the seasonal
development of the monsoon system. According to their simulation the Indian sum-
mer monsoon is prolonged and stronger during the early-Holocene than during the
mid-Holocene. In contrast, the North African monsoon is comparably enhanced at both
time-slices. In the following, we analyse the effect of insolation changes on different
monsoon systems based on the KCM simulation because this simulation also covers
the early-Holocene. The change in seasonal precipitation cycle between 9 k, 6 k, 3 k,
and 0 k can be seen in Fig. 13. The seasonal cycle of insolation change at 30° N and
50° N as well as the meridional gradient in insolation change (30° N–30° S) are shown
in Fig. 14.

Confirming the first hypothesis, the increase in monsoon precipitation over the North
African and Indian monsoon region is higher at 9 k than at 6 k and higher at 6 k than
at 3 k. The precipitation signal over northern Africa follows the change in insolation
gradient (30° N–30° S) with a lag time of about one month. This insolation gradient

The evolution of the Afro-Asian monsoon during the Holocene

A. Dallmeyer et al.

Title Page

Abstract

Introduction

Conclusions

References

Tables

Figures



Back

Close

Full Screen / Esc

Printer-friendly Version

Interactive Discussion



The evolution of the Afro-Asian monsoon during the Holocene

A. Dallmeyer et al.

Title Page

Abstract

Introduction

Conclusions

References

Tables

Figures



Back

Close

Full Screen / Esc

Printer-friendly Version

Interactive Discussion



anomaly is positive during spring and strongly increases in March at 9 k and in April at 6 k leading to an earlier onset of the monsoon season over northern Africa during early-Holocene than at mid-Holocene. The insolation gradient anomaly at 9 k exceeds the anomaly at 6 k during the entire monsoon season until August. This (+1 month lag) is also the period in which the precipitation difference to present-day is larger at 9 k than at 6 k. In September, the insolation gradient becomes negative at 9 k and at 6 k. This results in a fast decline of the rainfall signal and similar endings of the monsoon season during both periods. This result does therefore not support the second hypothesis of a postponed rainy season at 6 k. However, over northern Africa as well as over India, the largest change in precipitation between 9 k and 6 k occurs in the first half of the monsoon season, while the precipitation difference between 6 k and 3 k particularly accumulates during peak time and afterwards. This is in accordance with the insolation forcing.

According to KCM, the onset of the rain period over the Indian monsoon region is similar for all here considered time-slices. Thus, the precipitation variability is neither fully determined by the change in the insolation gradient nor by the insolation change on the Northern Hemisphere (here 30° N). During early-Holocene and mid-Holocene, the increase in precipitation is more pronounced over northern Africa (+140 % and +73 % compared to present-day, Table 4) than over India (+93 and +50 %). This is probably also related to the strong dependence of the North African monsoon on the interhemispheric insolation gradient that is more favourably changed with respect to an enhancement of monsoon systems than the insolation change at 30° N alone.

The East Asian monsoon region experiences minor rainfall changes compared to the tropical monsoon systems, confirming the third hypothesis. The annual averaged precipitation amount is similar for 9 k and 0 k. During mid-Holocene, rainfall is slightly increased by 2 %. However, the 9 k-signal is an intensification of the 6 k-signal, i.e. the decrease in spring precipitation is more pronounced at 9 k than at 6 k balancing the higher increase in summer precipitation at 9 k. The simulated East Asian monsoon rainfall signal reveals no clear relationship to the change in insolation, indicating that

The evolution of the Afro-Asian monsoon during the Holocene

A. Dallmeyer et al.

Title Page

Abstract

Introduction

Conclusions

References

Tables

Figures



Back

Close

Full Screen / Esc

Printer-friendly Version

Interactive Discussion



other factors might be more relevant. For instance, the climate in eastern Asia may be more sensitive to ocean feedbacks due to the special land–ocean configuration (Maher, 2008). The large meridional extent and the dependence of the East Asian monsoon on the Western Pacific subtropical high, probably makes the East Asian monsoon more constrained by the ocean thermal inertia (Wang et al., 2003). Furthermore, eastern Asia is more affected by the westerly wind circulation than the Indian or North African monsoon region.

Overall, KCM shows an impact of the differences in seasonality on the seasonal distribution of the Holocene precipitation change, but does not indicate a systematic effect of the seasonality on the timing of the Holocene rainfall optimum. Sensitivity experiments will help to further investigate the physical mechanisms of the different responses in the sub-systems of the Afro-Asian monsoon system.

4.3.2 What do reconstructions show?

Figure 15 shows the start, the mid-point, and the end of the wettest period in the last 15 000 years based on the reviewed reconstructions by Wang et al. (2010), but extended by reconstructions from Africa and new published records from East Asia. The reconstructions so far cover only the Asian monsoon region and eastern Africa, but not the North African monsoon area where no comparable synthesis of reconstructions exists.

The reconstructions reveal no systematic differences in rain optimum between the sub-monsoon domains, but regional tendencies: over eastern Africa, the wettest period starts early in Holocene or even before (9 k–13 k) at most sites. The end of the optimum is variable, ranging from 1 k–11 k. On average, the wettest periods last from 11 k to 5 k in southern hemispheric eastern Africa and from 10 k to 6 k in northern hemispheric eastern Africa. Few records exist for the Indian region and they do not agree regarding the start and end of the Holocene rainfall optimum. For the Indian monsoon area as defined in this study, the wettest period begins at 9 k and already ends at 7 k, on average. The Holocene rainfall optimum over south-eastern China starts early between

The evolution of the Afro-Asian monsoon during the Holocene

A. Dallmeyer et al.

[Title Page](#)

[Abstract](#)

[Introduction](#)

[Conclusions](#)

[References](#)

[Tables](#)

[Figures](#)

[⏪](#)

[⏩](#)

[◀](#)

[▶](#)

[Back](#)

[Close](#)

[Full Screen / Esc](#)

[Printer-friendly Version](#)

[Interactive Discussion](#)

9 k and 13 k at most sites. However, several caves records are located in this region that may rather indicate the moisture source than the absolute rainfall (cf. Sect. 4.2.2). Thus, these records may portray the strong Indian monsoon. In the northern part of eastern China, the start of the wettest period is very different, but several sites indicate a late rainfall optimum (between 3 k and 7 k). The wettest period terminates between 3 k and 5 k for many regions. Over the East Asian monsoon region defined for this study (EASM), the rain optimum period lasts from 10 k to 6 k, on average. In the northern part of the East Asian monsoon region (NEASM), the wettest period starts at 8 k and ends at 6 k, on average.

This synthesis of reconstructions, with respect to the timing of Holocene rainfall maximum, reveals that single records cannot be used to characterise the monsoon subsystems and to draw conclusion regarding the timing of maximum monsoon intensity. Furthermore, the reconstructions do not indicate an effect of seasonality on the Holocene rainfall trends and are thus in line with the model results. However, the synthesis of reconstruction by Wang et al. (2010) is based on various proxies. Even though all may record information on moisture changes, each proxy at each site may record a unique signal with respect to precipitation/moisture seasonality and amount.

5 Summary and conclusions

Monsoon circulations are primarily driven by seasonal and latitudinal differences in incoming solar radiation. Recent observations indicate an in-phase variability of all boreal monsoon systems on annual and even decadal time-scales leading to the establishment of the global monsoon concept. Whether this concept can be applied to past monsoon variability is still an open question (Trenberth et al., 2000). Reconstructions reveal large differences in the palaeo-monsoon evolution and suggest e.g. the different seasonality of the monsoon systems to be responsible for the asynchronous monsoon precipitation change.

The evolution of the Afro-Asian monsoon during the Holocene

A. Dallmeyer et al.

Title Page

Abstract

Introduction

Conclusions

References

Tables

Figures

◀

▶

◀

▶

Back

Close

Full Screen / Esc

Printer-friendly Version

Interactive Discussion



The Holocene rainfall trend in different sub-areas of the Afro-Asian monsoon region has been analysed on the basis of five transient climate model simulations covering the last 6000 years. These simulations have been performed within a wide spectrum of coupled atmosphere–ocean–(vegetation) models forced with prescribed changes in Earth’s orbital parameters during the Holocene. To extend the analysis to the early-Holocene and to investigate changes in the seasonal cycle of the monsoon systems, the transient simulation undertaken with the Kiel Climate Model (KCM, Park et al., 2009) has been used, covering the last 9500 years. Our analysis addresses the following questions: can these climate models capture the modern precipitation distribution and the reconstructed rainfall trend in the different parts of the Afro-Asian monsoon region? Do the monsoon sub-systems respond synchronously to the Holocene insolation forcing, supporting the global monsoon hypothesis? Is the Holocene precipitation response to the insolation forcing affected by the miscellaneous seasonality in the different monsoon subsystems?

(a) Model evaluation:

- The models represent the modern precipitation pattern, but they tend to underestimate annual precipitation in the tropical monsoon regions, i.e. northern Africa (by more than 300 mm year^{-1}) and India (by more than 750 mm year^{-1}), and overestimate annual rainfall over eastern China (by more than 750 mm year^{-1}).
- The pattern of precipitation change is similar to the reconstructions of Bartlein et al. (2010), showing an increased annual precipitation in most parts of the monsoon region at mid-Holocene compared to pre-industrial times. However, the amplitude of the precipitation signal is too weak in the models.
- In some parts of the East Asian monsoon region precipitation is decreased by $200\text{--}300 \text{ mm year}^{-1}$ during mid-Holocene. Regarding the location of these areas, the models are in disagreement leading to non-significant results in the ensemble mean. The decrease in precipitation is not in line with most reconstructions as

these show lower mid-Holocene precipitation rates only at few sites in eastern Asia.

- The seasonal cycle of precipitation is captured by most models over most areas with only few exceptions. The simulations reveal two modes of seasonal precipitation change between mid-Holocene and the pre-industrial period: in the tropical monsoon systems, precipitation is increased during the entire monsoon season but unchanged during the rest of the year. In contrast, the East Asian monsoon region experiences a decrease of precipitation during spring and an increase of precipitation during summer, partly compensating each other.

(b) Synchronous vs. asynchronous response to Holocene insolation forcing:

- Over the North African and Indian monsoon region as well as Southern Arabia, all models simulate a negative Holocene precipitation trend. Rainfall also declines in the northern part of the East Asian monsoon region in all simulations with the exception of PLASIM.
- In the core region of the East Asian monsoon domain, precipitation is increasing during the Holocene. Here, only ECHO-G suggests a negative rainfall trend. The increasing trend is not in line with the cave records in eastern Asia showing a decreasing rainfall trend during the Holocene. However, recent studies have pointed out that the cave records in eastern Asia may have been misinterpreted so far, not portraying absolute precipitation but rather the source region of the moisture (e.g. Maher and Thompson, 2012).
- The transient simulations modify the global monsoon concept, at least on centennial to millennial timescales. Although the rainfall trend is similar in most sub-monsoon regions, the rainfall variations are only partly correlated. COSMOS reveals moderate correlation between the precipitation signal over India and northern Africa ($r = +0.38$) as well as the northern part of the East Asian monsoon

CPD

10, 2293–2353, 2014

The evolution of the Afro-Asian monsoon during the Holocene

A. Dallmeyer et al.

Title Page

Abstract

Introduction

Conclusions

References

Tables

Figures



Back

Close

Full Screen / Esc

Printer-friendly Version

Interactive Discussion



The evolution of the Afro-Asian monsoon during the Holocene

A. Dallmeyer et al.

Title Page

Abstract

Introduction

Conclusions

References

Tables

Figures

◀

▶

◀

▶

Back

Close

Full Screen / Esc

Printer-friendly Version

Interactive Discussion



region and India ($r = +0.5$) and northern Africa ($r = +0.36$). In this model, the moisture flux from India to North eastern China is intensified at 6 k, probably explaining the strong connection of India and the northern part of the East Asian monsoon. The other models suggest only weak correlations between the tropical monsoon sub-monsoon systems and no correlation at all with the East Asian monsoon.

- Our results suggest a coupling between the tropical monsoon systems of India and northern Africa, but an independent evolution of the East Asian monsoon during the Holocene.

(c) Seasonality

- In line with the Holocene insolation forcing, the increase in precipitation compared to pre-industrial times over northern Africa and India is larger during the early-Holocene than during the mid-Holocene (25 and 15 %, respectively).
- The strongest insolation change at early- and mid-Holocene occurs during the present-day tropical monsoon season peak (July–August), but at the end of the rainy season in the East Asian monsoon region. Therefore, the tropical monsoon systems react more sensitive to the insolation forcing than the East Asian monsoon.
- The change in seasonal precipitation over northern Africa strongly follows the meridional interhemispheric insolation gradient (here: 30° N–30° S) with a lag time of about one month. Precipitation is predominantly increased during summer (by up to 3.5 mm day⁻¹) and not changed in the cold season (November–March). The differences in the timing of the strong insolation increase during spring leads to an onset of the North African monsoon one month earlier at 9 k than at 6 k. The withdrawal is similar for both periods.
- The Indian monsoon rainfall change is neither determined by the interhemispheric insolation gradient nor the northern hemispheric insolation change in KCM. The

The evolution of the Afro-Asian monsoon during the Holocene

A. Dallmeyer et al.

Title Page

Abstract

Introduction

Conclusions

References

Tables

Figures



Back

Close

Full Screen / Esc

Printer-friendly Version

Interactive Discussion



onset and withdrawal of the rainy season is not affected by the insolation forcing. Similar to the North African monsoon region, the precipitation predominantly increases during summer with maximum rainfall rates of 2.6 mm day^{-1} at 9 k and 2.2 mm day^{-1} at 6 k.

- 5 – The East Asian monsoon experiences minor rainfall changes during the Holocene because the insolation-induced increase in precipitation during the summer monsoon season is counter-balanced by a decrease in spring precipitation. The annual averaged rainfall sum is similar for 9 k and for pre-industrial times and increased by 2 % during mid-Holocene. The change in East Asian monsoon precipitation is only partly driven by the Holocene insolation signal. Our results show that this monsoon sub-system is probably also affected by other factors, for instance related to ocean–atmosphere-interactions or processes related to the westerly wind circulation.
- 10 – Besides the seasonal distribution of the rainfall change that is determined by the present-day seasonal cycle in the different monsoon sub-systems, the transient simulation reveals no systematic influence of the different seasonality on the Holocene precipitation change.
- 15 – The synthesis of reconstructions for the Asian and eastern African area reveals no systematic differences in rainfall optimum between the sub-monsoon systems during the Holocene as they rather indicate locally inhomogeneous rainfall changes. However, averaged over the different records, they show the tendency of an early occurrence of the wettest period in eastern Africa (10 k–6 k), southern China (10 k–6 k), and India (9 k–7 k). The rainfall optimum in the northern part of the East Asian monsoon region starts and ends slightly later (8 k–6 k). Thus, the reconstructions analysed in this study do not support the hypothesis of an effect of the seasonality on the Holocene rainfall history. They rather suggest, that single records should not be used to characterise the rainfall change for the entire
- 20
- 25

monsoon subsystems and that one cannot draw conclusion regarding the timing of maximum monsoon intensity using only single records.

Acknowledgements. We acknowledge P. J. Bartlein for providing the reconstructions of mid-Holocene rainfall. We thank S. Bathiany for constructive comments that improved the manuscript. This research is part of the priority program INTERDYNAMIK funded by the German Research Foundation (DFG). This study also contributes to the Cluster of Excellence CliSAP (Integrated Climate System Analysis and Prediction) funded by the German Federal Government and the German States.

The service charges for this open access publication have been covered by the Max Planck Society.

References

- Adler, R. F., Huffman, G. J., Chang, A., Ferraro, R., Xie, P. P., Janowiak, J., Rudolf, B., Schneider, U., Curtis, S., Bolvin, D., Gruber, A., Susskind, J., Arkin, P., and Nelkin, E.: The version-2 global precipitation climatology project (gpcp) monthly precipitation analysis (1979–present), *J. Hydrometeorol.*, 4, 1147–1167, doi:10.1175/1525-7541(2003)004<1147:tvGPCP>2.0.CO;2, 2003.
- An, Z. S., Porter, S. C., Kutzbach, J. E., Wu, X. H., Wang, S. M., Liu, X. D., Li, X. Q., and Zhou, W. J.: Asynchronous holocene optimum of the east asian monsoon, *Quaternary Sci. Rev.*, 19, 743–762, doi:10.1016/S0277-3791(99)00031-1, 2000.
- Bartlein, P. J., Harrison, S. P., Brewer, S., Connor, S., Davis, B. A. S., Gajewski, K., Guiot, J., Harrison-Prentice, T. I., Henderson, A., Peyron, O., Prentice, I. C., Scholze, M., Seppä, H., Shuman, B., Sugita, S., Thompson, R. S., Viau, A. E., Williams, J., and Wu, H.: Pollen-based continental climate reconstructions at 6 and 21 ka: a global synthesis, *Clim. Dynam.*, 37, 775–802, doi:10.1007/s00382-010-0904-1, 2010.
- Bathiany, S., Claussen, M., and Fraedrich, K.: Implications of climate variability for the detection of multiple equilibria and for rapid transitions in the atmosphere-vegetation system, *Clim. Dynam.*, 38, 1775–1790, 2012.
- Berger, A. L.: Long-term variations of daily insolation and quaternary climatic changes, *J. Atmos. Sci.*, 35, 2362–2367, doi:10.1175/1520-0469(1978)035<2362:ltvodi>2.0.CO;2, 1978.

The evolution of the Afro-Asian monsoon during the Holocene

A. Dallmeyer et al.

Title Page

Abstract

Introduction

Conclusions

References

Tables

Figures



Back

Close

Full Screen / Esc

Printer-friendly Version

Interactive Discussion



Boo, K. O., Martin, G., Sellar, A., Senior, C., and Byun, Y. H.: Evaluating the East Asian monsoon simulation in climate models, *J. Geophys. Res.*, 116, D01109, doi:10.1029/2010JD014737, 2011.

Braconnot, P. and Marti, O.: Impact of precession on monsoon characteristics from coupled ocean atmosphere experiments: changes in Indian monsoon and Indian ocean climatology, *Mar. Geol.*, 201, 23–34, doi:10.1016/S0025-3227(03)00206-8, 2003.

Brovkin, V., Raddatz, T., Reick, C. H., Claussen, M., and Gayler, V.: Global biogeophysical interactions between forest and climate, *Geophys. Res. Lett.*, 36, L07405, doi:10.1029/2009GL037543, 2009.

Cai, Y., Tan, L., Cheng, H., An, Z., Edwards, R. L., Kelly, M. J., Kong, X., and Wang, X.: The variation of summer monsoon precipitation in central China since the last deglaciation, *Earth Planet. Sc. Lett.*, 291, 21–31, doi:10.1016/j.epsl.2009.12.039, 2010.

Caley, T., Malaizé, B., Revel, M., Ducassou, E., Wainer, K., Ibrahim, M., Shoeaib, D., Migeon, S., and Marieu, V.: Orbital timing of the indian, east asian and african boreal monsoons and the concept of a “global monsoon”, *Quaternary Sci. Rev.*, 30, 3705–3715, doi:10.1016/j.quascirev.2011.09.015, 2011.

Cheng, H., Sinha, A., Wang, X., Cruz, F. W., and Edwards, R. L.: The global paleomonsoon as seen through speleothem records from asia and the americas, *Clim. Dynam.*, 39, 1045–1062, doi:10.1007/s00382-012-1363-7, 2012.

Cosford, J., Qing, H., Eglington, B., Matthey, D., Yuan, D., Zhang, M., and Cheng, H.: East Asian monsoon variability since the mid-Holocene recorded in a high-resolution, absolute-dated aragonite speleothem from eastern China, *Earth Planet. Sc. Lett.*, 275, 296–307, doi:10.1016/j.epsl.2008.08.018, 2008.

Dallmeyer, A., Claussen, M., Wang, Y., and Herzschuh, U.: Spatial variability of holocene changes in the annual precipitation pattern: a model-data synthesis for the asian monsoon region, *Clim. Dynam.*, 40, 2919–2936, doi:10.1007/s00382-012-1550-6, 2013.

deMenocal, P., Ortiz, J., Guilderson, T., Adkins, J., Sarnthein, M., Baker, L., and Yarusinsky, M.: Abrupt onset and termination of the african humid period: rapid climate responses to gradual insolation forcing, *Quaternary Sci. Rev.*, 19, 347–361, doi:10.1016/s0277-3791(99)00081-5, 2000.

Ding, Y. H.: The variability of the Asian summer monsoon, *J. Meteorol. Soc. Jpn.*, 85B, 21–54, doi:10.2151/jmsj.85B.21, 2007.

The evolution of the Afro-Asian monsoon during the Holocene

A. Dallmeyer et al.

Title Page

Abstract

Introduction

Conclusions

References

Tables

Figures

◀

▶

◀

▶

Back

Close

Full Screen / Esc

Printer-friendly Version

Interactive Discussion



Feudale, L. and Kucharski, F.: A common mode of variability of african and indian monsoon rainfall at decadal timescale, *Clim. Dynam.*, 41, 243–254, doi:10.1007/s00382-013-1827-4, 2013.

Fischer, N. and Jungclaus, J. H.: Evolution of the seasonal temperature cycle in a transient Holocene simulation: orbital forcing and sea-ice, *Clim. Past*, 7, 1139–1148, doi:10.5194/cp-7-1139-2011, 2011.

Fischer, N. and Jungclaus, J. H.: Holocene experiment with coupled atmosphere–ocean-model ECHAM5/MPI-OM, doi:10.1594/PANGAEA.773607, 2012.

Fleitmann, D., Burns, S. J., Mudelsee, M., Neff, U., Kramers, J., Mangini, A., and Matter, A.: Holocene forcing of the indian monsoon recorded in a stalagmite from southern oman, *Science*, 300, 1737–1739, doi:10.1126/science.1083130, 2003.

Fraedrich, K., Jansen, H., Kirk, E., Luksch, U., and Lunkeit, F.: The Planet Simulator: towards a user friendly model, *Meteorol. Z.*, 14, 299–304, 2005.

Francus, P., von Suchodoletz, H., Dietze, M., von Donner, R., Bouchard, F., Roy, A.-J., Fagot, M., Verschuren, D., and Kröpelin, S.: Varved sediments of Lake Yoa (Ounianga Kebir, Chad) reveal progressive drying of the Sahara during the last 6100 years, *Sedimentology*, 60, 911–934, doi:10.1111/j.1365-3091.2012.01370.x, 2013.

Haberkorn, K.: Reconstruction of the Holocene climate using an atmosphere–ocean-biosphere model and proxy data, Dissertation, Hamburg University, 2013.

Herzschuh, U.: Palaeo-moisture evolution at the margins of the Asian monsoon during the last 50 ka, *Quaternary Sci. Rev.*, 25, 163–178, 2003.

Hu, C., Henderson, G. M., Huang, J., Xie, S., Sun, Y., and Johnson, K. R.: Quantification of Holocene Asian monsoon rainfall from spatially separated cave records, *Earth Planet. Sc. Lett.*, 266, 221–232, doi:10.1016/j.epsl.2007.10.015, 2008.

Huang, R., Chen, J., Wang, L., and Lin, Z.: Characteristics, processes, and causes of the spatio-temporal variabilities of the east asian monsoon system, *Adv. Atmos. Sci.*, 29, 910–942, doi:10.1007/s00376-012-2015-x, 2012.

Indermuhle, A., Stocker, T., Joos, F., Fischer, H., Smith, H. J., Wahlen, M., Deck, B., Mastroianni, D., Tschumi, J., Blunier, T., Meyer, R., and Stauffer, B.: Holocene carbon-cycle dynamics based on CO₂ trapped in ice at Taylor Dome, Antarctica, *Nature*, 398, 121–126, 1999.

Jin, L., Schneider, B., Park, W., Latif, M., Khon, V., and Zhang, X.: The spatial-temporal patterns of Asian summer monsoon precipitation in response to Holocene insolation change: a model-

The evolution of the Afro-Asian monsoon during the Holocene

A. Dallmeyer et al.

Title Page

Abstract

Introduction

Conclusions

References

Tables

Figures

◀

▶

◀

▶

Back

Close

Full Screen / Esc

Printer-friendly Version

Interactive Discussion



data synthesis, *Quaternary Sci. Rev.*, 85, 47–62, doi:10.1016/j.quascirev.2013.11.004, 2014.

Jolly, D., Harrison, S. P., Damnati, B., and Bonnefille, R.: Simulated climate and biomes of africa during the late quaternary: comparison with pollen and lake status data, *Quaternary Sci. Rev.*, 17, 629–657, doi:10.1016/s0277-3791(98)00015-8, 1998.

Kang, I. S., Jin, K., Lau, K. M., Shukla, J., Krishnamurthy, V., Schubert, S. D., Waliser, D. E., Stern, W. F., Satyan, V., Kitoh, A., Meehl, G. A., Kanamitsu, M., Galin, V. Y., Sumi, A., Wu, G., Liu, Y., and Kim, J. K.: Intercomparison of atmospheric GCM simulated anomalies associated with the 1997/98 El Nino, *J. Climate*, 15, 2791–2805, 2002.

Khon, V. C., Park, W., Latif, M., Mokhov, I., and Schneider, B.: Response of the hydrological cycle to orbital and greenhouse gas forcing, *Geophys. Res. Lett.*, 37, L19705, doi:10.1029/2010GL044377, 2010.

Kleidon, A.: The climate sensitivity to human appropriation of vegetation productivity and its thermodynamic characterization, *Global Planet. Change*, 54, 109–127, doi:10.1016/j.gloplacha.2006.01.016, 2006.

Krishnamurti, T. N., Vijaya Kumar, T. S. V., and Mitra, A.K: Seasonal climate prediction of Indian summer monsoon, in: *The Asian Monsoon*, edited by: Wang, B., Springer/Praxis Publishing, New York, 553–583, 2006.

Kropelin, S., Verschuren, D., Lezine, A. M., Eggermont, H., Cocquyt, C., Francus, P., Cazet, J. P., Fagot, M., Rumes, B., Russell, J. M., Darius, F., Conley, D. J., Schuster, M., von Suchodoletz, H., and Engstrom, D. R.: Climate-driven ecosystem succession in the sahara: the past 6000 years, *Science*, 320, 765–768, doi:10.1126/science.1154913, 2008.

Kutzbach, J. E.: Monsoon climate of the early holocene – climate experiment with the earths orbital parameters for 9000 years ago, *Science*, 214, 59–61, doi:10.1126/science.214.4516.59, 1981.

Lau, K. M., Kim, K. M., and Yang, S.: Dynamical and boundary forcing characteristics of regional components of the asian summer monsoon, *J. Climate*, 13, 2461–2482, doi:10.1175/1520-0442(2000)013<2461:dabfco>2.0.co;2, 2000.

Liu, J., Wang, B., Yim, S.-Y., Lee, J.-Y., Jhun, J.-G., and Ha, K.-J.: What drives the global summer monsoon over the past millennium?, *Clim. Dynam.*, 39, 1063–1072, doi:10.1007/s00382-012-1360-x, 2012.

Legutke, S. and Voss, R.: The Hamburg atmosphere–ocean couple circulation model ECHO-G, Technical Report 18, Deutsches Klimarechenzentrum, Hamburg, 1999.

The evolution of the Afro-Asian monsoon during the Holocene

A. Dallmeyer et al.

Title Page

Abstract

Introduction

Conclusions

References

Tables

Figures

◀

▶

◀

▶

Back

Close

Full Screen / Esc

Printer-friendly Version

Interactive Discussion



Lorenz, S. J. and Lohmann, G.: Acceleration technique for Milankovitch type forcing in a coupled atmosphere–ocean circulation model: method and application for the Holocene, *Clim. Dynam.*, 23, 727–743, doi:10.1007/s00382-004-0469-y, 2004.

Madec, G.: NEMO reference manual, ocean dynamics component: NEMO-OPA, Preliminary version, Note Pole Model, 27, Inst. Pierre-Simon Laplace, Paris, 2006.

Maher, B. A.: Holocene variability of the east asian summer monsoon from chinese cave records: a re-assessment, *Holocene*, 18, 861–866, doi:10.1177/0959683608095569, 2008.

Maher, B. A. and Hu, M.: A high-resolution record of holocene rainfall variations from the western chinese loess plateau: antiphase behaviour of the african/indian and east asian summer monsoons, *Holocene*, 16, 309–319, doi:10.1191/0959683606hl929rp, 2006.

Maher, B. A. and Thompson, R.: Oxygen isotopes from chinese caves: records not of monsoon rainfall but of circulation regime, *J. Quaternary Sci.*, 27, 615–624, doi:10.1002/jqs.2553, 2012.

Marzin, C. and Braconnot, P.: Variations of indian and african monsoons induced by insolation changes at 6 and 9.5 kyr bp, *Clim. Dynam.*, 33, 215–231, doi:10.1007/s00382-009-0538-3, 2009.

Marsland, S. J., Haak, H., Jungclaus, J. H., Latif, M., and Roske, F.: The Max-Planck-Institute global ocean/sea ice model with orthogonal curvilinear coordinates, *Ocean Model.*, 5, 91–127, 2003.

Maier-Reimer, E., Mikolajewicz, U., and Hasselmann, K.: Mean circulation of the Hamburg LSG OGCM and its sensitivity to the thermohaline surface forcing, *J. Phys. Oceanogr.*, 23, 731–757, 1993.

Park, W., Keenlyside, N., Latif, M., Stroeh, A., Redler, R., Roeckner, E., and Madec, G.: Tropical Pacific climate and its response to global warming in the Kiel Climate Model, *J. Climate*, 22, 71–92, doi:10.1175/2008JCLI2261.1, 2009.

Peyron, O., Jolly, D., Braconnot, P., Bonnefille, R., Guiot, J., Wirmann, D., and Chalieu, F.: Quantitative reconstructions of annual rainfall in africa 6000 years ago: model-data comparison, *J. Geophys. Res.-Atmos.*, 111, D24110, doi:10.1029/2006jd007396, 2006.

Pfeiffer, M. and Lohmann, G.: The last interglacial as simulated by an atmosphere–ocean general circulation model: sensitivity studies on the influence of the Greenland Ice Sheet, in: *Earth System Science: Bridging the Gaps between Disciplines Perspectives from a Multidisciplinary Helmholtz Research School*, SpringerBriefs in Earth System Sciences, edited by: Lohmann, G., Grosfeld, K., Wolf-Gladrow, D., Unnithan, V., Notholt, J., and Weg-

The evolution of the Afro-Asian monsoon during the Holocene

A. Dallmeyer et al.

Title Page

Abstract

Introduction

Conclusions

References

Tables

Figures



Back

Close

Full Screen / Esc

Printer-friendly Version

Interactive Discussion



ner, A., Springer, Heidelberg, 138 pp. 61 illus., 52 in color, ISBN 978-3-642-32234-1, doi:10.1007/978-3-642-32235-8, 57–64, 2013.

Prasad, S. and Enzel, Y.: Holocene paleoclimates of india, *Quaternary Res.*, 66, 442–453, doi:10.1016/j.yqres.2006.05.008, 2006.

5 Raddatz, T. J., Reick, C. H., Knorr, W., Kattge, J., Roeckner, E., Schnur, R., Schnitzler, K. G., Wetzol, P., and Jungclaus, J.: Will the tropical land biosphere dominate the climate–carbon cycle feedback during the twenty-first century?, *Clim. Dynam.*, 29, 565–574, doi:10.1007/s00382-007-0247-8, 2007.

10 Randall, D. A., Wood, R. A., Bony, S., Colman, R., Fichet, T., Fyfe, J., Kattsov, V., Pitman, A., Shukla, J., Srinivasan, J., Stouffer, R. J., Sumi, A., and Taylor, K. E.: Climate models and their evaluation, in: *Climate Change 2007: The Physical Science Basis. Contribution of Working Group I to the Fourth Assessment Report of the Intergovernmental Panel on Climate Change*, edited by: Solomon, S., Qin, D., Manning, M., Chen, Z., Marquis, M., Averyt, K. B., Tignor, M., and Miller, H. L., Cambridge University Press, Cambridge, UK, New York, NY, USA, 591–662, 2007.

15 Roeckner, E., Arpe, K., Bengtsson, L., Christoph, M., Claussen, M., Duemenil, L., Esch, M., Giorgetta, M., Schlese, U., and Schulzweida, U.: The atmospheric general circulation model ECHAM-4: model description and simulation of the present day climate, Max-Planck-Institut für Meteorologie, Hamburg, Germany, Rep. 218, 1996.

20 Roeckner, E., Baeuml, G., Bonaventura, L., Brokopf, R., Esch, M., Giorgetta, M., Hagemann, S., Kirchner, I., Kornblueh, L., Manzini, E., Rhodin, A., Schlese, U., Schulzweida, U., and Tompkins, A.: The atmospheric general circulation model ECHAM5. Part I: Model description, Max Planck Institute for Meteorology, Hamburg, Germany, Rep. 349, 2003.

Ruddiman, W. F.: What is the timing of orbital-scale monsoon changes?, *Quaternary Sci. Rev.*, 25, 657–658, doi:10.1016/j.quascirev.2006.02.004, 2006.

25 Ruddiman, W. F.: *Earth's Climate: Past and Future*, 2nd revised edn., W.H. Freeman and Company, 388 pp., New York, 2008.

Trenberth, K. E., Stepaniak, D. P., and Caron, J. M.: The global monsoon as seen through the divergent atmospheric circulation, *J. Climate*, 13, 3969–3993, doi:10.1175/1520-0442(2000)013<3969:tgmast>2.0.co;2, 2000.

30 Uppala, S. M., Kallberg, P. W., Simmons, A. J., Andrae, U., Bechtold, V. D., Fiorino, M., Gibson, J. K., Haseler, J., Hernandez, A., Kelly, G. A., Li, X., Onogi, K., Saarinen, S., Sokka, N., Allan, R. P., Andersson, E., Arpe, K., Balmaseda, M. A., Beljaars, A. C. M., Van De Berg, L.,

The evolution of the Afro-Asian monsoon during the Holocene

A. Dallmeyer et al.

Title Page

Abstract

Introduction

Conclusions

References

Tables

Figures



Back

Close

Full Screen / Esc

Printer-friendly Version

Interactive Discussion



Bidlot, J., Bormann, N., Caires, S., Chevallier, F., Dethof, A., Dragosavac, M., Fisher, M., Fuentes, M., Hagemann, S., Holm, E., Hoskins, B. J., Isaksen, L., Janssen, P., Jenne, R., McNally, A. P., Mahfouf, J. F., Morcrette, J. J., Rayner, N. A., Saunders, R. W., Simon, P., Sterl, A., Trenberth, K. E., Untch, A., Vasiljevic, D., Viterbo, P., and Woollen, J.: The era-40 re-analysis, *Q. J. Roy. Meteor. Soc.*, 131, 2961–3012, doi:10.1256/qj.04.176, 2005.

Varma, V., Prange, M., Merkel, U., Kleinen, T., Lohmann, G., Pfeiffer, M., Renssen, H., Wagner, A., Wagner, S., and Schulz, M.: Holocene evolution of the Southern Hemisphere westerly winds in transient simulations with global climate models, *Clim. Past*, 8, 391–402, doi:10.5194/cp-8-391-2012, 2012.

Wagner, S.: ECHO-G transient simulation 7000BP–4500BP (orbit only): atmosphere 12 HOUR raw data, World Data Center for Climate, CERA-DB “EH4T30L19_HOPE-GL20_OE1_12H”, available at: http://cera-www.dkrz.de/WDCC/ui/Compact.jsp?acronym=EH4T30L19_HOPE-GL20_OE1_12H, 2007.

Wagner, S., Widmann, M., Jones, J., Haberzettl, T., Lucke, A., Mayr, C., Ohlendorf, C., Schabitz, F., and Zolitschka, B.: Transient simulations, empirical reconstructions and forcing mechanisms for the mid-holocene hydrological climate in southern patagonia, *Clim. Dynam.*, 29, 333–355, doi:10.1007/s00382-007-0229-x, 2007.

Wang, B. and LinHo: Rainy season of the asian-pacific summer monsoon, *J. Climate*, 15, 386–398, doi:10.1175/1520-0442(2002)015<0386:rsotap>2.0.co;2, 2002.

Wang, B., Wu, R. G., and Lau, K. M.: Interannual variability of the asian summer monsoon: contrasts between the indian and the western north pacific-east asian monsoons, *J. Climate*, 14, 4073–4090, doi:10.1175/1520-0442(2001)014<4073:ivotas>2.0.co;2, 2001.

Wang, B., Clemens, S. C., and Liu, P.: Contrasting the indian and east asian monsoons: implications on geologic timescales, *Mar. Geol.*, 201, 5–21, doi:10.1016/s0025-3227(03)00196-8, 2003.

Wang, B., Liu, J., Kim, H. J., Webster, P. J., Yim, S. Y., and Xiang, B.: Northern Hemisphere summer monsoon intensified by mega-el nino/southern oscillation and atlantic multidecadal oscillation, *P. Natl. Acad. Sci. USA*, 110, 5347–5352, doi:10.1073/pnas.1219405110, 2013.

Wang, B. E.: *The Asian Monsoon*, Springer praxis books, Springer/Praxis Publishing Co, Berlin, 787 pp., 2006.

Wang, P.: Global monsoon in a geological perspective, *Chinese Sci. Bull.*, 54, 1113–1136, doi:10.1007/s11434-009-0169-4, 2009.

The evolution of the Afro-Asian monsoon during the Holocene

A. Dallmeyer et al.

Title Page

Abstract

Introduction

Conclusions

References

Tables

Figures

⏪

⏩

◀

▶

Back

Close

Full Screen / Esc

Printer-friendly Version

Interactive Discussion



Wang, Y., Cheng, H., Edwards, R. L., He, Y., Kong, X., An, Z., Wu, J., Kelly, M. J., Dykoski, C. A., and Li, X.: The Holocene Asian monsoon: links to solar changes and north atlantic climate, *Science*, 308, 854–857, doi:10.1126/science.1106296, 2005.

Wang, Y., Liu, X., and Herzschuh, U.: Asynchronous evolution of the indian and east asian summer monsoon indicated by holocene moisture patterns in monsoonal central asia, *Earth-Sci. Rev.*, 103, 135–153, doi:10.1016/j.earscirev.2010.09.004, 2010.

Webster, P. J., Magana, V. O., Palmer, T. N., Shukla, J., Tomas, R. A., Yanai, M., and Yasunari, T.: Monsoons: processes, predictability, and the prospects for prediction, *J. Geophys. Res.-Oceans*, 103, 14451–14510, doi:10.1029/97jc02719, 1998.

Wolff, J., Maier-Reimer, E., and Legutke, S.: The Hamburg Primitive Equation Model HOPE, Technical report 18, German Climate Computer Center (DKRZ), Hamburg, 1997.

Xie, P. and P. A. Arkin: Global precipitation: a 17-year monthly analysis based on gauge observations, satellite estimates, and numerical model outputs, *B. Am. Meteorol. Soc.*, 78, 2539–2558, 1997.

Zhao, Y. and Harrison, S. P.: Mid-holocene monsoons: a multi-model analysis of the inter-hemispheric differences in the responses to orbital forcing and ocean feedbacks, *Clim. Dynam.*, 39, 1457–1487, doi:10.1007/s00382-011-1193-z, 2011.

Zhou, T., Wu, B., Scaife, A. A., Brönnimann, S., Cherchi, A., Fereday, D., Fischer, A. M., Foland, C. K., Jin, K. E., Kinter, J., Knight, J. R., Kucharski, F., Kusunoki, S., Lau, N.-C., Li, L., Nath, M. J., Nakaegawa, T., Navarra, A., Pegion, P., Rozanov, E., Schubert, S., Sporyshev, P., Voldoire, A., Wen, X., Yoon, J. H., Zeng, N.: The CLIVAR C20C project: which components of the Asian-Australian Monsoon variability are forced and reproducible?, *Clim. Dynam.*, 33, 1051–1068, doi:10.1007/s00382-008-0501-8, 2009.

The evolution of the Afro-Asian monsoon during the Holocene

A. Dallmeyer et al.

Table 1. Overview of all transient climate simulations considered in this study, including resolution (Res.), application of the forcing (Acc.), i.e. accelerated or not, and handling of dynamic vegetation in the model.

Simulation	Model	Reference	Res.	Forcing	Acc.	Dyn. veg.
COSMOS	ECHAM5/JSBACH-MPIOM	Fischer and Jungclaus (2011)	T31L19	orbit	no	yes
ECHO-G	ECHAM4-HOPE-G	Wagner et al. (2007)	T31L19	orbit	no	no
PLASIM	PlaSim-LSGocean-Simba	Haberkorn (2013)	T21L10	orbit + GHG	no	yes
COSMOSacc	ECHAM5/JSBACH-MPIOM	Varma et al. (2012); Pfeiffer and Lohmann (2013)	T31L19	orbit	yes	yes
KCM	ECHAM5-NEMO	Jin et al. (2014)	T31L19	orbit	yes	no

Title Page

Abstract

Introduction

Conclusions

References

Tables

Figures



Back

Close

Full Screen / Esc

Printer-friendly Version

Interactive Discussion



The evolution of the Afro-Asian monsoon during the Holocene

A. Dallmeyer et al.

Table 2. Absolute rainfall [mm year^{-1}] in the Afro-Asian monsoon region (including land and ocean. cf. Fig. 6) and standard rainfall error [mmday^{-1}] averaged over all grid-boxes in this region.

	GPCP	COSMOS	ECHO-G	PLASIM	COSMOSacc	KCM	ENSMEAN
Rainfall [mm year^{-1}]	941.7	1016.8	965.0	862.1	1052.2	998.2	978.9
Error [mmd^{-1}]	–	0.99	1.39	1.51	1.57	1.39	1.16

Title Page

Abstract

Introduction

Conclusions

References

Tables

Figures

⏪

⏩

◀

▶

Back

Close

Full Screen / Esc

Printer-friendly Version

Interactive Discussion



Table 3. Pearson's correlation coefficient for the rainfall time series in different monsoon sub-region, i.e. Indian monsoon region (ISM), North African monsoon region (NAM), East Asian monsoon region (EASM), northern part of the East Asian monsoon region (NEASM), and Southern Arabia (SARAB). The time series have been detrended by a 500yr moving average before calculating the correlation coefficients. Only the non-accelerated simulations have been used.

COSMOS	ISM	NAM	EASM	NEASM	SARAB
ISM	1.00	–	–	–	–
NAM	0.38	1.00	–	–	–
EASM	–0.08	–0.02	1.00	–	–
NEASM	0.50	0.36	0.19	1.00	–
SARAB	0.55	0.53	0.03	0.34	1.00

ECHO-G	ISM	NAM	EASM	NEASM	SARAB
ISM	1.00	–	–	–	–
NAM	0.31	1.00	–	–	–
EASM	–0.19	–0.02	1.00	–	–
NEASM	0.12	0.20	0.17	1.00	–
SARAB	–0.08	–0.01	0.10	–0.15	1.00

PLASIM	ISM	NAM	EASM	NEASM	SARAB
ISM	1.00	–	–	–	–
NAM	0.27	1.00	–	–	–
EASM	–0.08	0.03	1.00	–	–
NEASM	–0.11	0.09	0.17	1.00	–
SARAB	–0.22	–0.02	–0.10	–0.02	1.00

ENSMEAN	ISM	NAM	EASM	NEASM	SARAB
ISM	1.00	–	–	–	–
NAM	0.41	1.00	–	–	–
EASM	0.00	0.06	1.00	–	–
NEASM	0.23	0.22	0.38	1.00	–
SARAB	0.32	0.36	0.20	0.30	1.00

The evolution of the Afro-Asian monsoon during the Holocene

A. Dallmeyer et al.

[Title Page](#)

[Abstract](#) [Introduction](#)

[Conclusions](#) [References](#)

[Tables](#) [Figures](#)

[◀](#) [▶](#)

[◀](#) [▶](#)

[Back](#) [Close](#)

[Full Screen / Esc](#)

[Printer-friendly Version](#)

[Interactive Discussion](#)



The evolution of the Afro-Asian monsoon during the Holocene

A. Dallmeyer et al.

Table 4. Annual mean relative precipitation difference [%] between 6 k and 0 k for each simulation, averaged over the different monsoon sub-regions. For KCM, the precipitation differences between 9 k and 6 k and 9 k and 0 k are also shown.

	ECHO-G 6 k–0 k	COSMOS 6 k–0 k	PLASIM 6 k–0 k	KCM 9 k–0 k	6 k–0 k	9 k–6 k	COSMOSacc 6 k–0 k
NAM	23.7	173.3	100.0	139.6	92.5	24.5	130.4
NEASM	10.6	16.2	–3.3	26.7	14.7	10.5	6.4
EASM	1.7	–1.3	–3.6	–0.2	2.4	–2.6	–4.6
ISM	23.4	23.9	44.2	72.5	50.0	15.0	17.0

Title Page

Abstract

Introduction

Conclusions

References

Tables

Figures



Back

Close

Full Screen / Esc

Printer-friendly Version

Interactive Discussion



The evolution of the Afro-Asian monsoon during the Holocene

A. Dallmeyer et al.

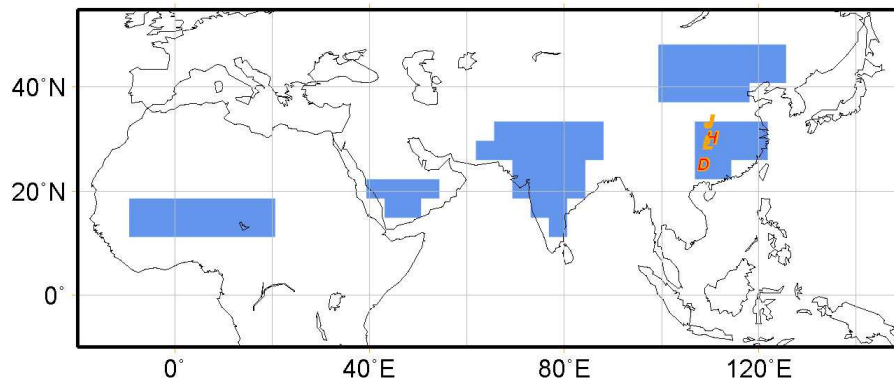


Fig. 1. Definition of the different monsoon sub-regions used in this study (shaded) and location of caves in the East Asian monsoon region (letters) for which speleothem records exist, i.e. Dongge cave (D, 25.32° N, 108.09° E, Wang et al., 2005), Heshang Cave (H, 30.45° N, 110.42° E, Hu et al., 2008), Lianhua Cave (L, 29.29° N, 109.32° E, Cosford et al., 2008), and Jiuxian Cave (J, 33.34° N, 109.6° E, Cai et al., 2010).

Title Page

Abstract

Introduction

Conclusions

References

Tables

Figures

◀

▶

◀

▶

Back

Close

Full Screen / Esc

Printer-friendly Version

Interactive Discussion



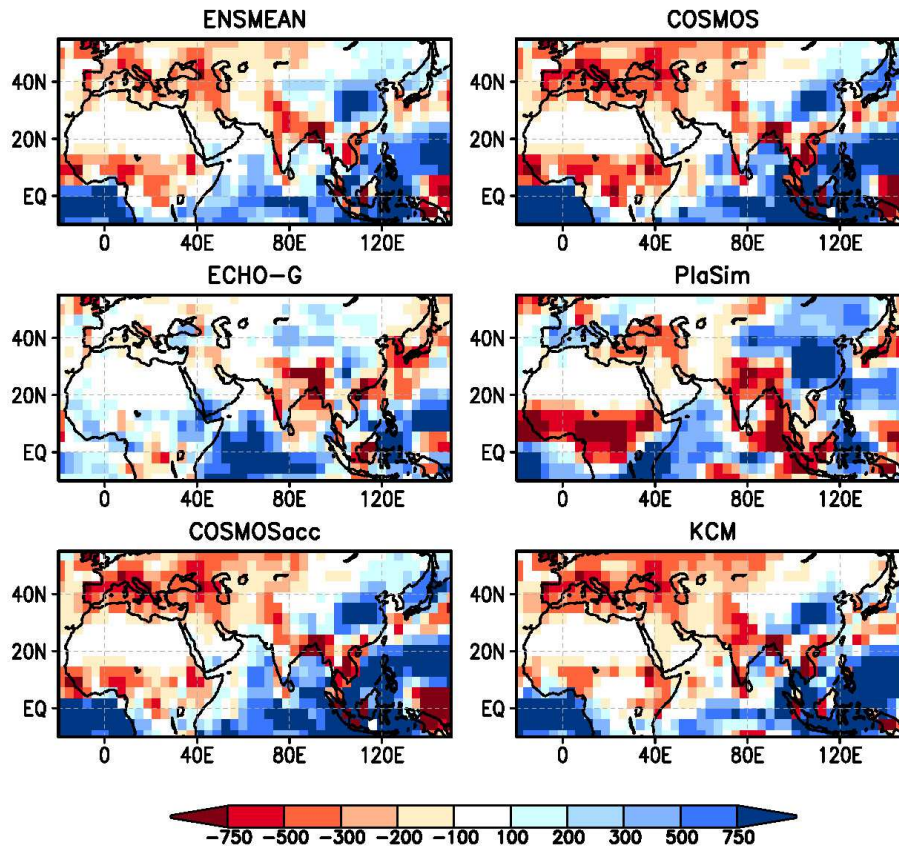


Fig. 2. Biases in annual mean precipitation [mm year^{-1}] between the different transient simulations (last 100 years, i.e. 0 k) and modern observed climate, represented by the precipitation data of the Global Precipitation Climatology Project (GPCP, Adler et al., 2003).

The evolution of the Afro-Asian monsoon during the Holocene

A. Dallmeyer et al.

Title Page

Abstract Introduction

Conclusions References

Tables Figures

◀ ▶

◀ ▶

Back Close

Full Screen / Esc

Printer-friendly Version

Interactive Discussion



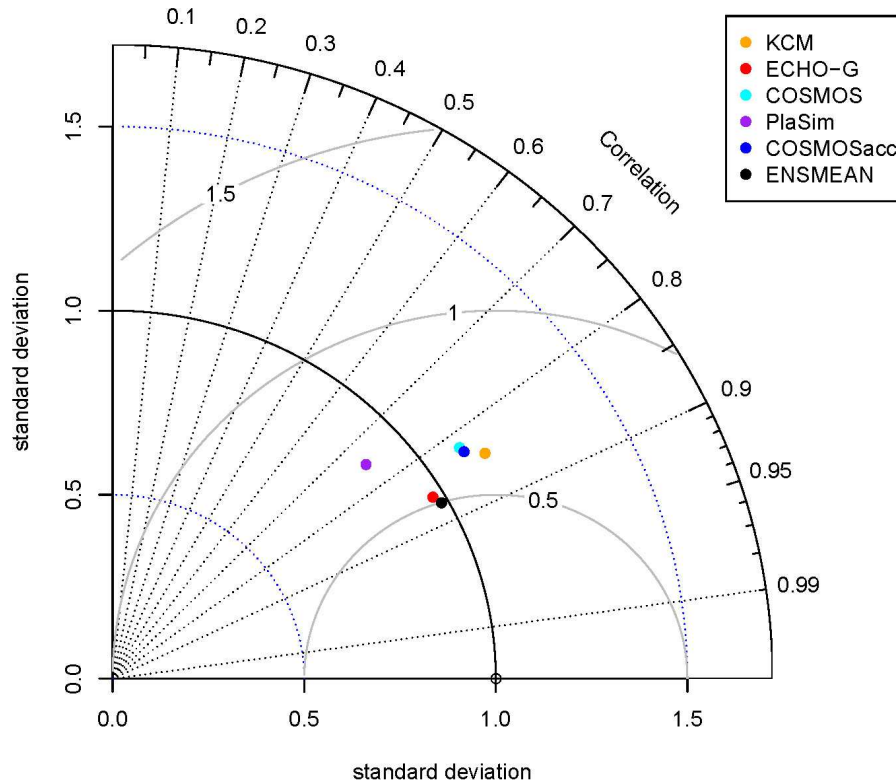


Fig. 3. Taylor diagram showing the pattern correlation, normalised standard deviation and normalised root-mean-square error (grey circles) of the simulated precipitation in the different models (0 k-time-slice) for the Afro-Asian monsoon region. Reference dataset: GPCP (white dot).

The evolution of the Afro-Asian monsoon during the Holocene

A. Dallmeyer et al.

Title Page

Abstract Introduction

Conclusions References

Tables Figures

◀ ▶

◀ ▶

Back Close

Full Screen / Esc

Printer-friendly Version

Interactive Discussion



The evolution of the Afro-Asian monsoon during the Holocene

A. Dallmeyer et al.

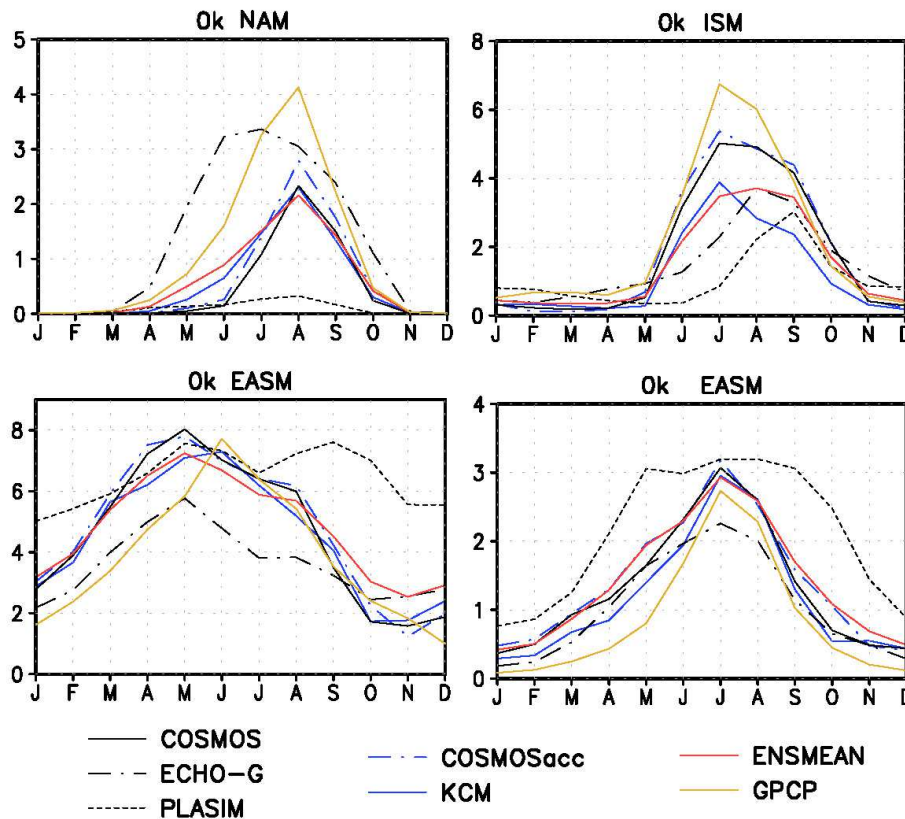


Fig. 4. Simulated pre-industrial seasonal precipitation cycle compared to GPCP observational data (in mm day^{-1}), for different regions in the Afro-Asian monsoon domain, i.e. North African monsoon region (NAM), Indian monsoon region (ISM), East Asian monsoon region (EASM), and northern part of the East Asian monsoon region (NEASM). Please note the change in scale.

Title Page

Abstract

Introduction

Conclusions

References

Tables

Figures

◀

▶

◀

▶

Back

Close

Full Screen / Esc

Printer-friendly Version

Interactive Discussion

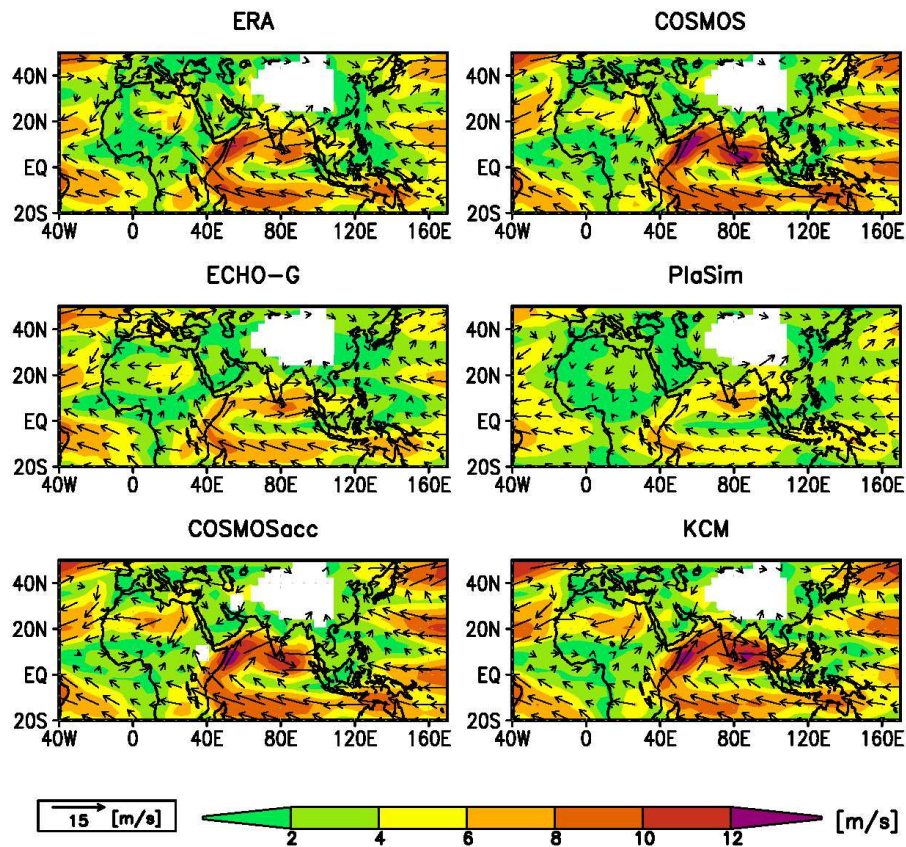


Fig. 5. Simulated pre-industrial (0 k) atmospheric circulation in 850 hPa (vector, ms^{-1}) and wind intensity (shaded, ms^{-1}) during the summer season (MJJASO).

The evolution of the Afro-Asian monsoon during the Holocene

A. Dallmeyer et al.

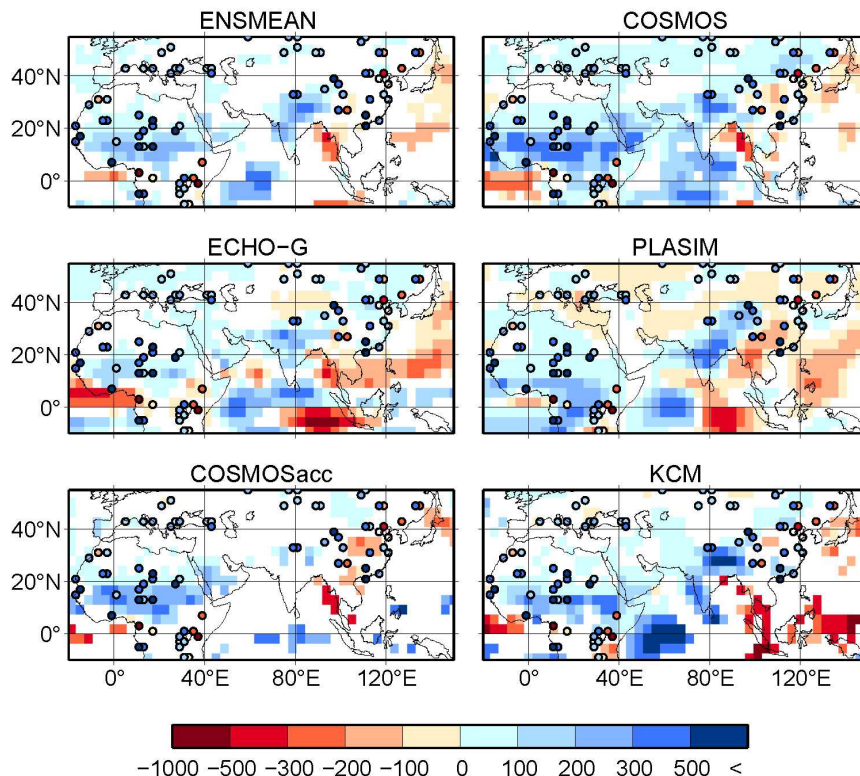


Fig. 6. Simulated mean annual precipitation difference (shaded, mm year^{-1}) between mid-Holocene (6k) and pre-industrial (0k). Only significant values are shown, i.e. significant on 95 %-level (Student's *T* Test) for the non-accelerated experiments (ECHO-G, COSMOS, PLASIM) and significant on 90 %-level for the accelerated experiments (COSMOSacc, KCM). The ensemble mean (ENSMEAN) is defined significant, if all simulations agree in sign of the precipitation change in the individual grid-boxes. The reconstructions of Bartlein et al. (2010) are additionally shown (dots).

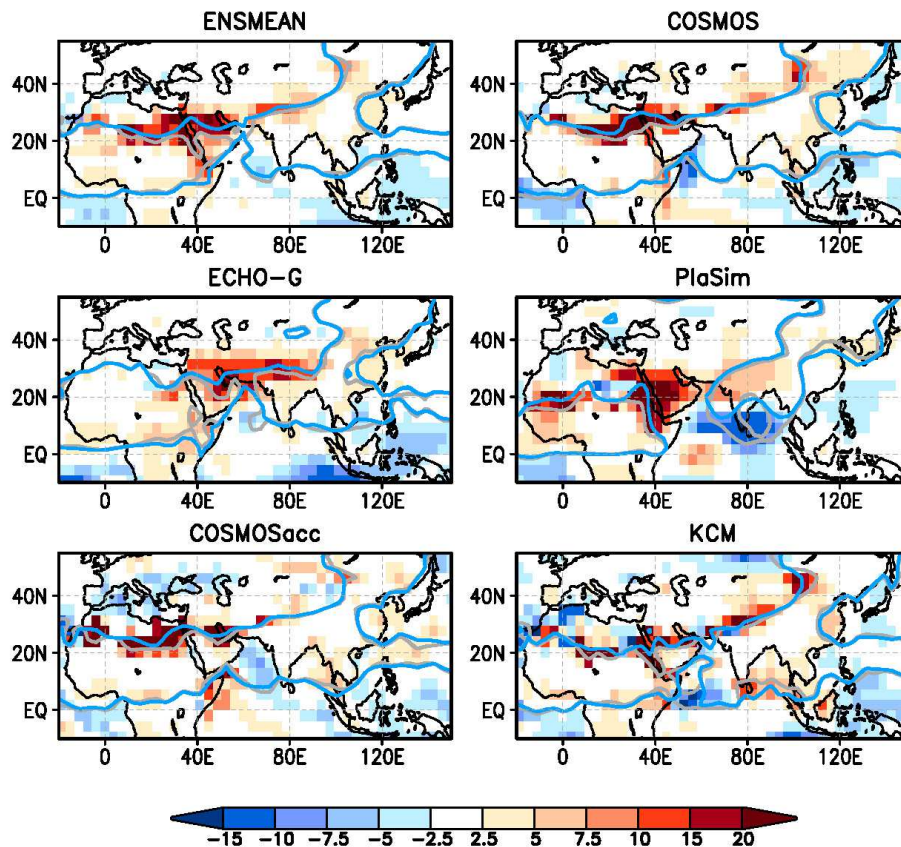


Fig. 7. Change in the ratio of summer to annual precipitation between mid-Holocene (6 k) and pre-industrial (0k) indicating the expansion of the Afro-Asian monsoon region. The grey and blue line marks the pre-industrial and mid-Holocene extent of the monsoon region, respectively, i.e. the 55 %-isoline of the summer to annual precipitation ratio.

The evolution of the Afro-Asian monsoon during the Holocene

A. Dallmeyer et al.

Title Page

Abstract Introduction

Conclusions References

Tables Figures

◀ ▶

◀ ▶

Back Close

Full Screen / Esc

Printer-friendly Version

Interactive Discussion



The evolution of the Afro-Asian monsoon during the Holocene

A. Dallmeyer et al.

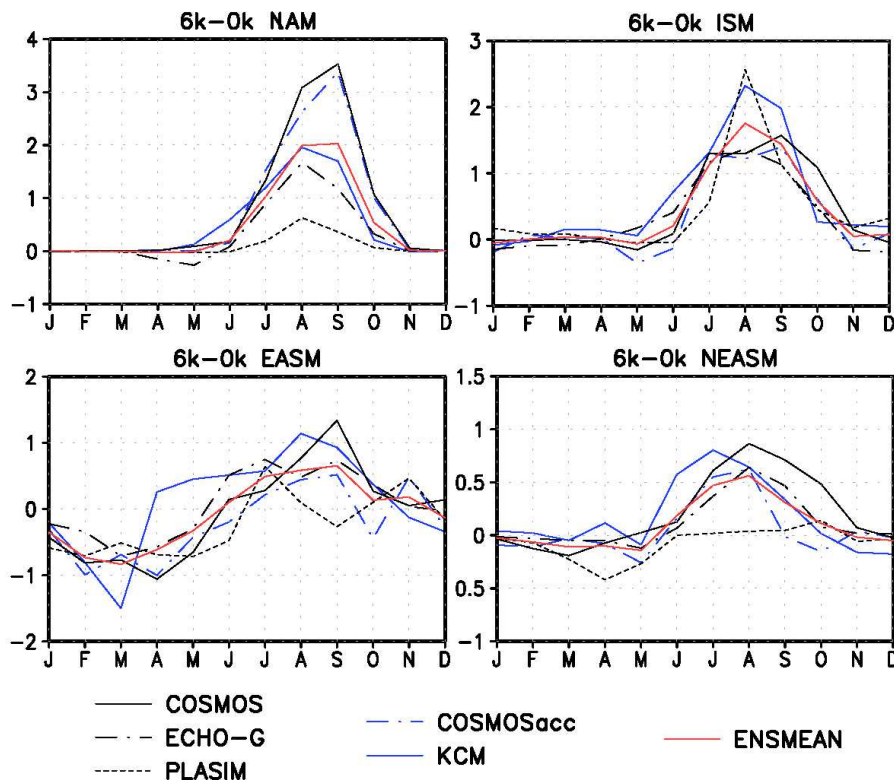


Fig. 8. Simulated change in the seasonal precipitation cycle between mid-Holocene and pre-industrial (mm day^{-1}) for different regions in the Afro-Asian monsoon domain, i.e. North African monsoon region (NAM), Indian monsoon region (ISM), East Asian monsoon region (EASM), and northern part of the East Asian monsoon region (NEASM). Please note the change in scale.

Title Page

Abstract

Introduction

Conclusions

References

Tables

Figures

◀

▶

◀

▶

Back

Close

Full Screen / Esc

Printer-friendly Version

Interactive Discussion

The evolution of the Afro-Asian monsoon during the Holocene

A. Dallmeyer et al.

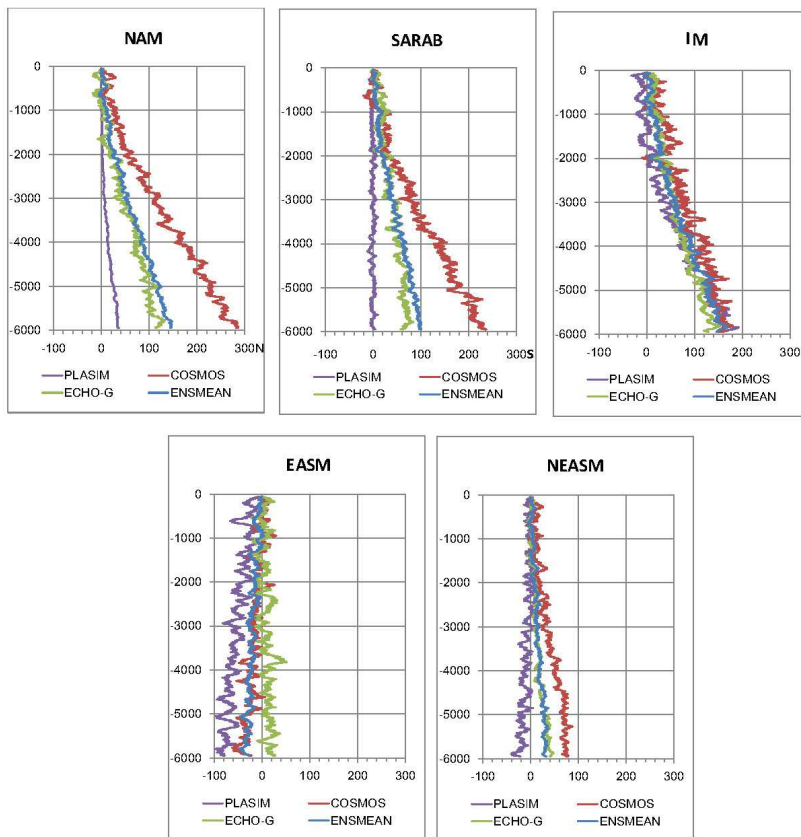


Fig. 9. Simulated rainfall trend (100 yr-running mean, in mm year^{-1}) in different sub-regions of the Afro-Asian monsoon domain, displayed as anomaly to the last time-step representing the pre-industrial climate. The regions are: North African monsoon region (NAM), Southern Arabia (SARAB), Indian monsoon region (ISM), East Asian monsoon region (EASM), and northern part of the East Asian monsoon region (NEASM).

Title Page

Abstract

Introduction

Conclusions

References

Tables

Figures



Back

Close

Full Screen / Esc

Printer-friendly Version

Interactive Discussion



The evolution of the Afro-Asian monsoon during the Holocene

A. Dallmeyer et al.

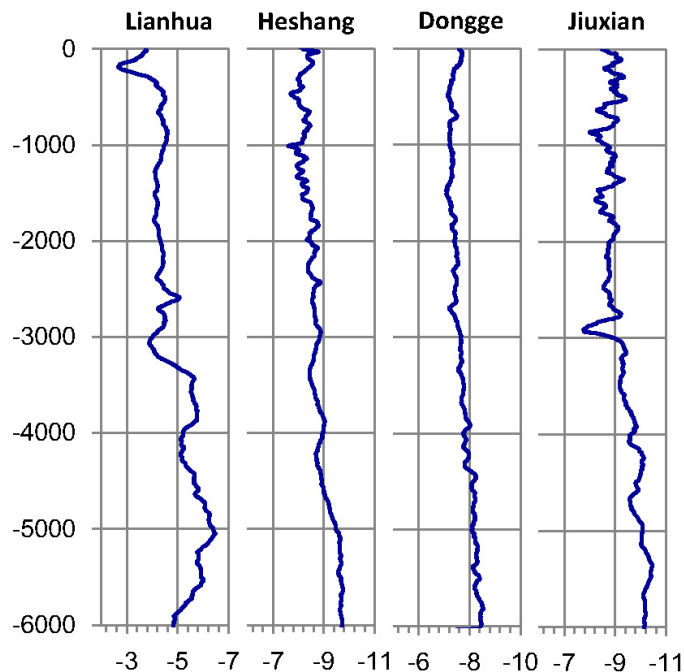


Fig. 10. Reconstructed speleothem oxygen isotope records ($d^{18}O$, per mil) taken from different caves in the East Asian monsoon region (cf. Fig. 1), i.e.: Lianhua Cave (29.29° N, 109.32° E, Cosford et al., 2008), Heshang Cave (30.45° N, 110.42° E, Hu et al., 2008), Dongge cave (25.32° N, 108.09° E, Wang et al., 2005), and Jiuxian Cave (J, 33.34° N, 109.6° E, Cai et al., 2010).

[Title Page](#)[Abstract](#)[Introduction](#)[Conclusions](#)[References](#)[Tables](#)[Figures](#)[Back](#)[Close](#)[Full Screen / Esc](#)[Printer-friendly Version](#)[Interactive Discussion](#)

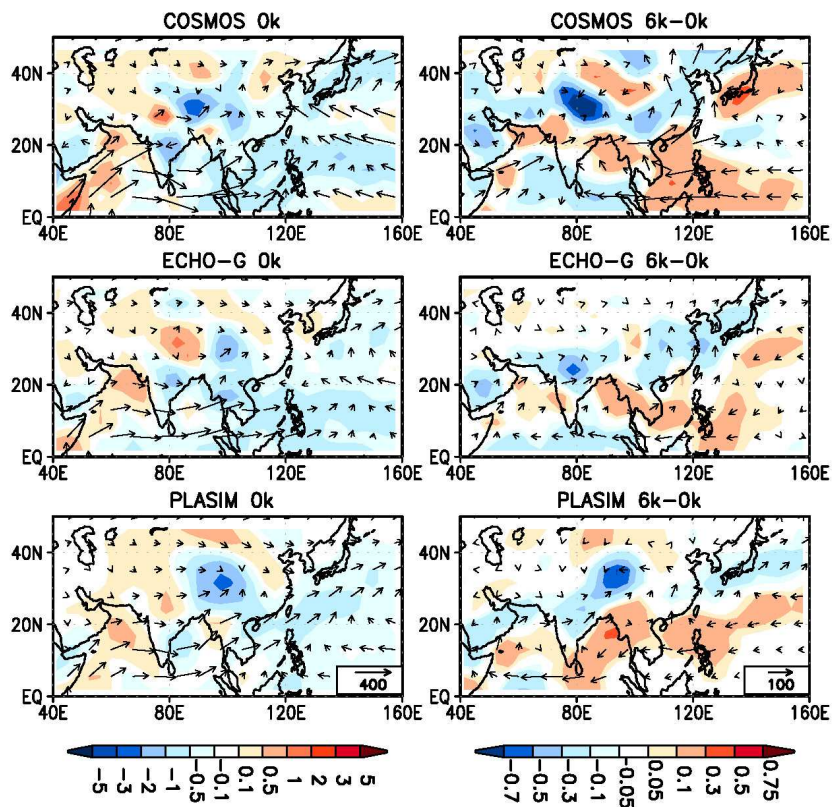


Fig. 11. Simulated vertically integrated moisture flux (vector, $\text{kg m}^{-1} \text{ s}^{-1}$) and its convergence (shaded, $10 \times 10^{-5} \text{ kg m}^{-2} \text{ s}^{-1}$), i.e. convergence = blue (atmospheric moisture sink), divergence = red (atmospheric moisture source), as well as simulated change in vertically integrated moisture flux (vector, $\text{kg m}^{-1} \text{ s}^{-1}$) and its convergence (shaded, $10 \times 10^{-5} \text{ kg m}^{-2} \text{ s}^{-1}$) between mid-Holocene and pre-industrial.

The evolution of the Afro-Asian monsoon during the Holocene

A. Dallmeyer et al.

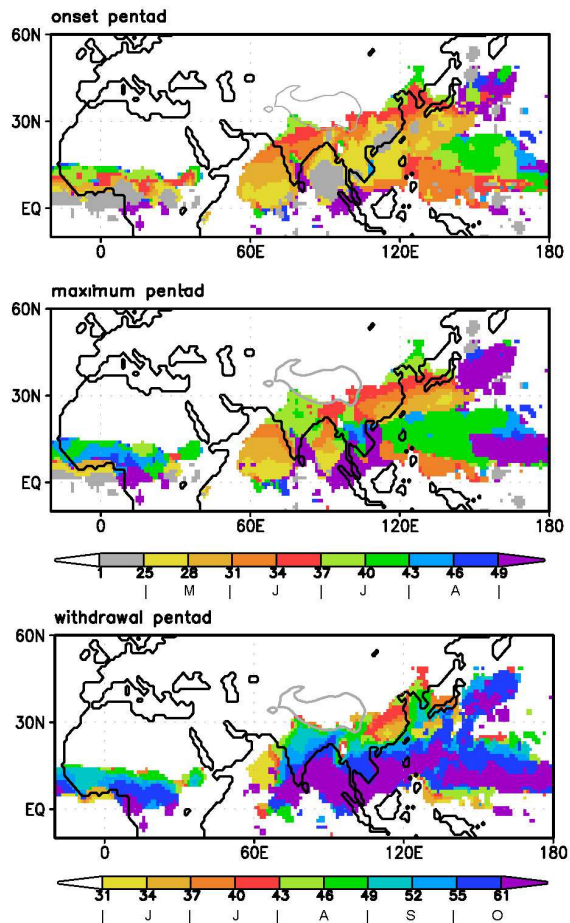


Fig. 12. Pentad of monsoon onset, maximum monsoon rainfall, and withdrawal based on the observational dataset of the Climate Prediction Centre (CMAP, 1979–2008; Xie and Arkin, 1997), calculated following the criteria of Wang and LinHo (2002).

The evolution of the Afro-Asian monsoon during the Holocene

A. Dallmeyer et al.

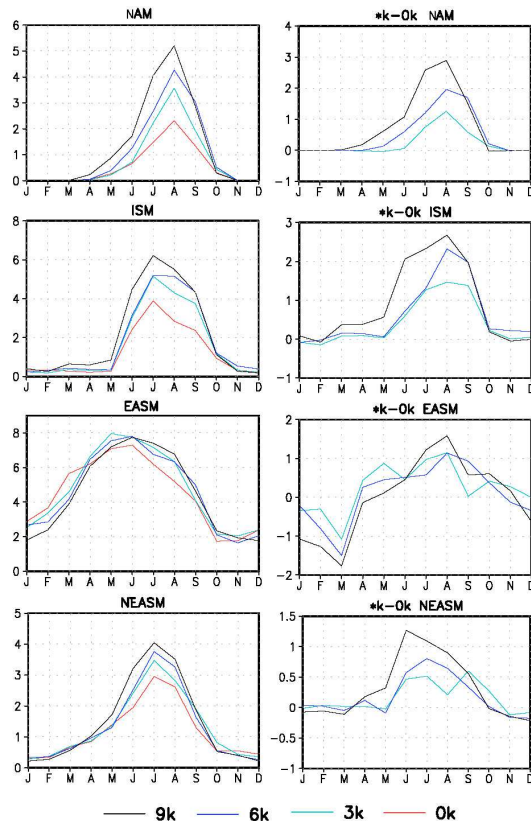


Fig. 13. Simulated seasonal precipitation cycle [mm day⁻¹] for different time-slices (9k, 6k, 3k, 0k) and the different monsoon sub-regions in the Afro-Asian monsoon domain as well as the change in seasonal precipitation cycle (mm day⁻¹) between 9k/6k/3k and 0k, based on the transient Holocene simulation performed in KCM. The regions are: North African monsoon region (NAM), Indian monsoon region (ISM), East Asian monsoon region (EASM), and northern part of the East Asian monsoon region (NEASM). Please note the change in scale.

Title Page

Abstract

Introduction

Conclusions

References

Tables

Figures

◀

▶

◀

▶

Back

Close

Full Screen / Esc

Printer-friendly Version

Interactive Discussion

The evolution of the Afro-Asian monsoon during the Holocene

A. Dallmeyer et al.

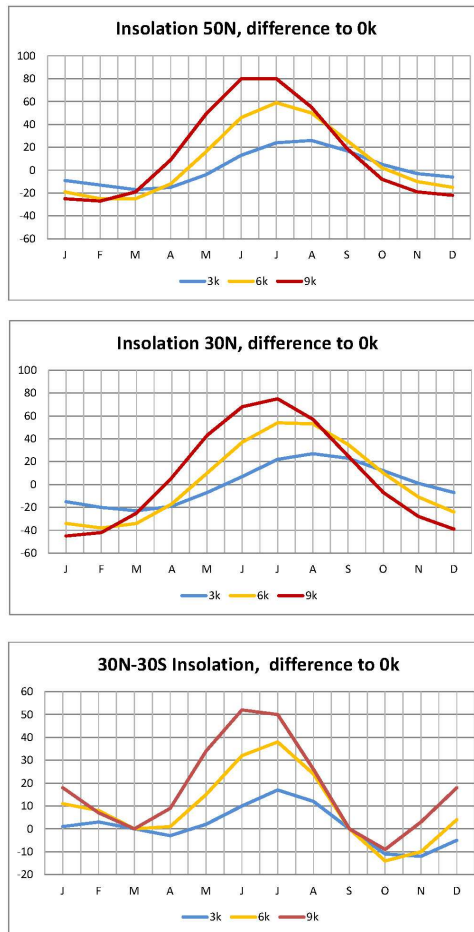


Fig. 14. Solar incoming radiation at 50° N, 30° N and insolation gradient between 30° N and 30° S for different time-slices (9 k,6 k,3 k) as anomaly to present-day insolation (0 k), in Wm^{-2} .

Title Page

Abstract Introduction

Conclusions References

Tables Figures

◀ ▶

◀ ▶

Back Close

Full Screen / Esc

Printer-friendly Version

Interactive Discussion



The evolution of the Afro-Asian monsoon during the Holocene

A. Dallmeyer et al.

Title Page

Abstract

Introduction

Conclusions

References

Tables

Figures



Back

Close

Full Screen / Esc

Printer-friendly Version

Interactive Discussion

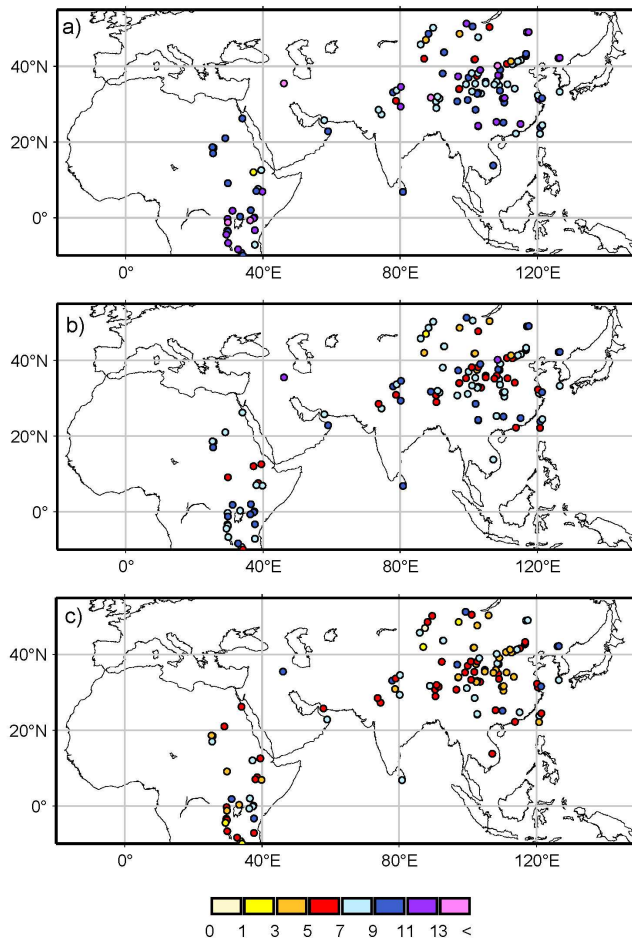


Fig. 15. Reconstructed start, mid, and end time of the wettest period during the Holocene (in ka before present), based on the synthesis of records by Wang et al. (2010).