

Arctic Holocene
proxy climate
database

H. S. Sundqvist et al.

Arctic Holocene proxy climate database – new approaches to assessing geochronological accuracy and encoding climate variables

H. S. Sundqvist^{1,2}, D. S. Kaufman³, N. P. McKay³, N. L. Balascio⁴, J. P. Briner⁵,
L. C. Cwynar⁶, H. P. Sejrup⁷, H. Seppä⁸, D. A. Subetto⁹, J. T. Andrews¹⁰,
Y. Axford¹¹, J. Bakke^{7,12}, H. J. B. Birks^{13,14,15}, S. J. Brooks¹⁶, A. de Vernal¹⁷,
A. E. Jennings¹⁰, F. C. Ljungqvist^{2,18}, K. M. Rühland¹⁹, C. Saenger²⁰,
J. P. Smol¹⁹, and A. E. Viau²¹

¹Department of Physical Geography & Quaternary Geology, Stockholm University, Stockholm, Sweden

²Bolin Centre for Climate Research, Stockholm University, Stockholm, Sweden

³School of Earth Sciences & Environmental Sustainability, Northern Arizona University, Flagstaff, USA

⁴Lamont-Doherty Earth Observatory of Columbia University, Palisades, New York, USA

⁵Department of Geology, University at Buffalo, New York, USA

⁶Department of Biology, University of New Brunswick, Fredericton, Canada

⁷Department of Earth Sciences, University of Bergen, Bergen, Norway

Title Page

Abstract

Introduction

Conclusions

References

Tables

Figures



Back

Close

Full Screen / Esc

Printer-friendly Version

Interactive Discussion



Arctic Holocene proxy climate database

H. S. Sundqvist et al.

Title Page

Abstract

Introduction

Conclusions

References

Tables

Figures



Back

Close

Full Screen / Esc

Printer-friendly Version

Interactive Discussion



⁸Department of Geosciences and Geography, University of Helsinki, Helsinki, Finland

⁹Northern Water Problems Institute, Karelian Research Center, Russian Academy of Sciences, Petrozavodsk, Russia

¹⁰Institute of Arctic and Alpine Research, University of Colorado, Boulder, USA

¹¹Department of Earth & Planetary Sciences, Northwestern University, Illinois, USA

¹²Bjerknes Centre for Climate Research, University of Bergen, Bergen, Norway

¹³Department of Biology, University of Bergen, Bergen, Norway

¹⁴Environmental Change Research Centre, University College London, London, UK

¹⁵School of Geography and the Environment, University of Oxford, Oxford, UK

¹⁶Department of Life Sciences, Natural History Museum, London, UK

¹⁷GEOTOP, Université du Québec à Montréal, Montreal, Canada

¹⁸Department of History, Stockholm University, Stockholm, Sweden

¹⁹Paleoecological Environmental Assessment and Research Lab (PEARL),

Department of Biology, Queen's University, Ontario, Canada

²⁰Alaska Pacific University, Anchorage, USA

²¹Department of Geography, University of Ottawa, Ottawa, Canada

Received: 2 December 2013 – Accepted: 13 December 2013 – Published: 6 January 2014

Correspondence to: H. S. Sundqvist (hanna.sundqvist@natgeo.su.se)

and D. S. Kaufman (darrell.kaufman@nau.edu)

Published by Copernicus Publications on behalf of the European Geosciences Union.

Abstract

We present a systematic compilation of previously published Holocene proxy climate records from the Arctic. We identified 167 sites from north of 58° N latitude where proxy time-series extend back at least to 6 cal ka, are resolved at sub-millennial scale (at least one value every 400 ± 200 yr) and have age models constrained by at least one age every 3000 yr. In addition to conventional metadata for each proxy record (location, proxy type, reference), we include two novel parameters that add functionality to the database. First, “climate interpretation” is a series of fields that logically describe the specific climate variable(s) represented by the proxy record. It encodes the proxy-climate relation reported by authors of the original studies into a structured format to facilitate inter-comparison with climate model output. Second, “geochronology accuracy score” (chron score) is a numerical rating that reflects the overall accuracy of ^{14}C -based age models from lake and marine sediments. Chron scores were calculated using the original author-reported ^{14}C ages, which are included in this database. The database contains 315 records (some sites include multiple records) from six regions covering the circumpolar Arctic; Fennoscandia is the most densely sampled region (30 % of the records), whereas only five records from the Russian Arctic met the criteria for inclusion. The database contains proxy records from lake sediment (60 %), marine sediment (32 %), glacier ice (5 %), and other sources. Most (60 %) reflect temperature (mainly summer warmth) and are primarily based on pollen, chironomid, or diatom assemblages. Many (15 %) reflect some aspect of hydroclimate as inferred from changes in stable isotopes, pollen and diatom assemblages, humification index in peat, and changes in equilibrium-line altitude of glaciers. This comprehensive database can be used in future studies to investigate the spatial-temporal pattern of Arctic Holocene climate changes and their causes. The Arctic Holocene dataset is available from NOAA Paleoclimatology.

CPD

10, 1–63, 2014

Arctic Holocene proxy climate database

H. S. Sundqvist et al.

Title Page

Abstract

Introduction

Conclusions

References

Tables

Figures

⏪

⏩

◀

▶

Back

Close

Full Screen / Esc

Printer-friendly Version

Interactive Discussion



1 Introduction

Describing the spatial-temporal pattern of climate transitions provides insight into the relation between the mean climate state and dynamical aspects of climate change at the regional scale. This requires a large network of well-dated and well-resolved proxy climate records that captures the details of past climate variability. Such a synthesis of proxy climate time-series can be used to assess the occurrence and strength of regional climate patterns and periodicities, and is needed for comparisons with the output of climate models. Databases that provide ready access to a large volume of information in a coherent, logical and flexible format will facilitate new research and accelerate discovery in climate science (Overpeck et al., 2011; Emile-Geay and Eshleman, 2013).

Previous Holocene paleoclimate syntheses have emphasized time slices, especially 6 ka, and have relied heavily on pollen from terrestrial records (e.g. Bartlein et al., 2011), or have emphasized sea-surface temperatures from continental margins (Marrcott et al., 2013). A relatively comprehensive database of available proxy data of all types has not yet been assembled into a unified format for effective analysis. Moreover, the geochronological data needed to quantify the uncertainty associated with the timing of paleoclimate changes are rarely archived.

Building on previous Holocene paleoclimate syntheses from the Arctic (CAPE, 2001; Bigelow et al., 2003; Kaufman et al., 2004; Sundqvist et al., 2010), we present a compilation of previously published proxy climate time-series from north of 58° N latitude. All of the records extend back to at least 6 ka (all ages in this article are in calendar years BP), and 84 % extend to at least 8 ka. We expand on previous work by including the entire time-series of proxy data (rather than single time-slice values) and a wider array of proxy types, and by quantifying the temporal resolution of each record. Assessing the patterns of paleoclimate change through space and time requires accurate chronological control, but the accuracy of the underlying geochronology varies among the proxy records. We therefore present a scheme for rating the geochronological accuracy of sediment-based proxies, the dominant source of Holocene proxy data in the

CPD

10, 1–63, 2014

Arctic Holocene proxy climate database

H. S. Sundqvist et al.

Title Page

Abstract

Introduction

Conclusions

References

Tables

Figures



Back

Close

Full Screen / Esc

Printer-friendly Version

Interactive Discussion



Arctic. Comparing proxies to the output of earth system models also requires clear articulation of the climate variables represented by a proxy records. We therefore present a scheme for characterizing the proxy climate variables. We also present the design of the database fields, the procedures and protocols used to populate the database, and we summarize its contents. Version 1 of the database is included with this Discussion Paper; it is available at NOAA Paleoclimatology along with any future revisions.

2 Procedures and protocols

A vast assortment of unique Holocene proxy climate records is available from the Arctic. Developing a uniform database of proxy climate records requires a systematic approach to handle a dataset based on such heterogeneous input. The database represents an extensive search of proxy climate records published prior to November 2013. A list of other Holocene paleoclimate records that were considered but that did not meet the criteria for inclusion in this database is also included to document the scope of our search and to provide an annotated bibliography for future studies. All proxy types were included from both terrestrial and marine environments, although we did not attempt a review of marine ice-rafted-debris records, which can have a complicated and variable relation to climate. Some proxy records have been calibrated using statistical procedures over the instrumental period to infer paleoclimate change, assuming that the processes that control the proxy remain constant downcore (Tingley et al., 2012; von Storch et al., 2004). Other proxies rely on transfer functions based on the calibration of contemporary environmental gradients (Birks et al., 2010; Juggins and Birks, 2012), or the modern analogue technique (MAT), which uses the similarity between modern and fossil assemblages (e.g. Guiot and de Vernal, 2007). Unlike most proxy data compilations, we considered proxy records regardless of whether they were calibrated to a specific climate variable, provided that a peer-reviewed study had demonstrated a clear relation between the proxy and climate. For some sites, the database also includes the time-series of properties from lake and marine sediment that were

Arctic Holocene proxy climate database

H. S. Sundqvist et al.

Title Page

Abstract

Introduction

Conclusions

References

Tables

Figures



Back

Close

Full Screen / Esc

Printer-friendly Version

Interactive Discussion



not interpreted in terms of a specific climate variable, but might give insight into other paleo-environmental changes.

The workload for generating a comprehensive data product was distributed among the co-authors of this study. The Arctic was subdivided into six regions (Fig. 1) and a representative from each region led a team of experts who conducted a comprehensive review of the literature, assessed the suitability of proxy records, identified the key proxy records from multi-proxy studies, helped gather the numerical data, and checked the accuracy of the metadata and data. The six regions were delineated based loosely on the present-day spatial pattern of the Northern Annular Mode (Arctic Oscillation) as expressed by its correlation with summer temperature – the climate variable most frequently reconstructed by the proxies in the database. While regional representation brings expert knowledge to this project, the database comprises a coherent compilation of records from across the circumpolar Arctic that can easily be combined or subdivided to address specific research questions. The six regions (and their leaders) are: (1) Alaska and Yukon (D.S.K.), (2) mainland Canada (L.C.C.), (3) Canadian Arctic Archipelago and Greenland (J.P.B.), (4) North Atlantic including Iceland (H.P.S.), (5) Fennoscandia (H.S.), and (6) Arctic Russia (D.A.S.). In addition, to facilitate community-wide input, a call for participation was made at professional meetings (e.g., Kaufman, 2011), the project was announced on the Past Global Changes (PAGES) website, and an open-source outlet with a public discussion phase was chosen for the publication.

Age uncertainty in proxy time-series is a fundamental limitation in reconstructions of past climate, especially for those aimed at assessing the synchronicity of change across a region. To address this, we developed a systematic, reproducible, and flexible scheme for judging the overall accuracy of ^{14}C -based age models from sedimentary sequences and applied it to the database (Appendix A). This required the recovery and input of the original ^{14}C data for each of the sediment-based records. These data are critical for updating and standardizing age models, as well as calculating age-model

Arctic Holocene proxy climate database

H. S. Sundqvist et al.

[Title Page](#)[Abstract](#)[Introduction](#)[Conclusions](#)[References](#)[Tables](#)[Figures](#)[Back](#)[Close](#)[Full Screen / Esc](#)[Printer-friendly Version](#)[Interactive Discussion](#)

ensembles that will enable a statistical approach for quantifying uncertainty in the time domain.

3 Selection criteria

The criteria for the inclusion of an individual paleoclimate record in the database are:

- 5 i. *Located at northern high latitudes.* The database includes records from north of 58° N. We recognize that this is only one of many approaches to delimiting the broadly defined Arctic region. We chose a latitude-based cutoff because it is easy to apply, and 58° N is far enough south to encompass nearly the entire sub-Arctic zone. The database can be sorted by latitude to select the more strictly defined
10 Arctic sites.
- 15 ii. *Demonstrated relation with a climate variable.* The database includes proxy records of all types that have been used to quantify past changes in temperature, moisture, and other climate variables. In addition, to expand the coverage of the database, and recognizing that some research questions can be addressed by knowing the timing and direction of climate change, we also include proxy records that have not been transformed into quantitative estimates of climate variables, but that have been interpreted by the original study authors as relating to one or more climate variables.
- 20 iii. *Continuous time-series that includes (at minimum) the entire 6 to 2 ka period.* Our interest is the entire post-glacial period, but most proxy records do not extend through the Holocene. We excluded records that did not go back to at least 6 ka. Likewise, some records do not extend up to the present and we excluded those that did not extend to at least 2 ka. Our database complements and was developed in concert with the proxy database focused on the last 2000 yr, which

Arctic Holocene proxy climate database

H. S. Sundqvist et al.

Title Page

Abstract

Introduction

Conclusions

References

Tables

Figures



Back

Close

Full Screen / Esc

Printer-friendly Version

Interactive Discussion



is overseen by the Past Global Changes (PAGES) Arctic2k Working Group. The Arctic2k data are archived by NOAA Paleoclimatology¹.

iv. *Resolved at sub-millennial scale.* The sample resolution of each record was calculated as the average time between data points for the period of common overlap for all records (6 to 2 ka), and two standard deviations of that average was used to quantify the regularity of the data spacing. We included records with an average sample resolution of at least 400 yr and two standard deviations of less than ± 200 yr.

$$R = ((t_1 - t_2) + \dots + (t_{n-1} - t_n)) / n \quad (1)$$

Where R = sample resolution in years, t_1 = age of the first data point older than 2 ka in the proxy time series, t_n = age of the last data point younger than 6 ka, and n = number of data points between 6 and 2 ka. This minimum resolution likely suffices for resolving sub-millennial patterns.

v. *Age constrained.* We included records with age models constrained by at least one age every 3000 yr back to 6 ka (i.e. a minimum of 3000 yr between ages). Sediment cores that lack a ¹⁴C age younger than 3 ka were rejected. This initial screening retains a high proportion of the available records (~ 60 %), while recognizing that such coarse age control is insufficient to address questions that require centennial-scale accuracy. The age of the sediment core surface was included as an age-control point, provided that the sediment-water interface was preserved during sample collection.

vi. *Peer reviewed.* All proxy records including paleoclimate estimates in the database have been published in the peer-reviewed literature. The digital data for some sites were available through online data sources (22 out of 167), but the data from most

¹http://hurricane.ncdc.noaa.gov/pls/paleox/f?p=519:7:::P1_STUDY_ID,P1_SCIENCE_KEYWORD_ID:12711,81:

of the sites were obtained directly from the authors of the original studies (145 out of 167) and are now being released as part of this data product. The limited number of records available through on-line archives underscores the usefulness of this database.

4 Database structure and fields

The database includes a single Excel (.xls) file containing the metadata for all sites (reproduced here as Table 1), and six Excel (.xls) files containing the primary proxy and geochronology data. Version 1 of the database is available as a Supplement to this article and at NOAA Paleoclimatology². Any revisions will be posted at NOAA Paleoclimatology. The files are subdivided by region and each comprises sheets containing the primary data for each site. In addition to these spreadsheet-based files, the database is configured in a self-describing and machine-readable format to interface with the Virtual Paleoclimate Laboratory in R (vpLR; McKay et al., 2012). In this format, the data and metadata are structured in a flat text file that is easily read into structured arrays for data analysis or converted into alternative formats. In addition to the citations to the published records included in this database, we include a bibliography with citations to studies that were considered for inclusion in this database, but did not meet the specified criteria (Table S1).

4.1 Proxy and geochronology data

The proxy data for each site are listed in a separate sheet within each of the six regional files. Each sheet contains the individual proxy records, including the depth and age of each of the samples used to develop the time-series. The ages are from the published versions, except a few that were updated by calibrating ¹⁴C ages to calendar age using the online version of Calib v5. Details about the sample thickness represented by each

²http://hurricane.ncdc.noaa.gov/pls/paleox/f?p=519:1:::::P1_STUDY_ID:15444.

Arctic Holocene proxy climate database

H. S. Sundqvist et al.

Title Page

Abstract

Introduction

Conclusions

References

Tables

Figures

⏪

⏩

◀

▶

Back

Close

Full Screen / Esc

Printer-friendly Version

Interactive Discussion



data point are included where they are available from the original publication, or when conveyed to us by their authors. This information is needed for precise determination of the smoothing effect of the sampling scheme. Each site-level sheet includes a table listing the individual ^{14}C ages used to develop the age model for lake and marine cores, and U-Th ages for speleothems. Any supplemental age control including short-lived isotopes and tephras are also noted. This information was used to calculate the “geochronology accuracy score” (Appendix A).

4.2 Metadata

The metadata file (Table 1) includes basic information about the records contained within the database, with one entry (row) for each site. Some sites include multiple proxy records and their metadata are consolidated into a single row using a logical punctuation scheme to separate individual inputs and to connote modifiers (Table 1, notes). The data fields contained within the metadata include: site location, type of proxy information (archive and proxy type), length of the record (youngest and oldest record ages), and reference to the original publication(s). In addition to conventional metadata, we have included several parameters for each proxy record that add functionality to the database by providing key variables for filtering the data to identify those records that best address a particular research question. These are outlined below:

Resolution. The average sample resolution and regularity of that spacing (Eq. 1) are listed. If the site includes multiple proxy records, the best average resolution is entered.

Author-interpreted climate variable. This is a series of six fields describing the specific climate variable(s) represented by the proxy record. It encodes the proxy-climate relation as determined by the original studies into a structured format designed to facilitate comparison with climate model output. The fields are: (1) climate variable - The climate variable (one or more), e.g. temperature, precipitation, wind, effective moisture (precipitation-evapotranspiration; $P-E$). (2) Parameter detail – Provides further detail about the basis on which the parameter is defined, e.g. air, sea-surface, snow, lake bottom, upwelling. (3) Seasonality – The time of year that is represented, e.g. MJJA,

CPD

10, 1–63, 2014

Arctic Holocene proxy climate database

H. S. Sundqvist et al.

Title Page

Abstract

Introduction

Conclusions

References

Tables

Figures



Back

Close

Full Screen / Esc

Printer-friendly Version

Interactive Discussion



**Arctic Holocene
proxy climate
database**H. S. Sundqvist et al.

[Title Page](#)[Abstract](#)[Introduction](#)[Conclusions](#)[References](#)[Tables](#)[Figures](#)[Back](#)[Close](#)[Full Screen / Esc](#)[Printer-friendly Version](#)[Interactive Discussion](#)

July, winter, warmest month, annual. (4) Statistical detail – The transform function or specific element of the frequency distribution within the season, or the aggradation of the data, e.g. mean, maximum, sum, peak, integral. (5) relation to climate parameter – The relation between the parameter and the interpreted climate variable, e.g. positive, negative, linear, exponential. (6) Quantitative – “Quantitative” proxies have been transformed or otherwise calibrated to quantitative estimates of temperature ($^{\circ}\text{C}$), precipitation (mm yr^{-1}) or other climate variables, whereas ‘uncalibrated’ proxies have a clear relation to one or more climate variables, but have not been transformed into quantitative estimates.

Geochronology accuracy score. The vast majority (92 %) of the proxy records in this database are from Holocene sediments sampled from lakes and oceans. Because the sediment in these environments accumulates relatively continuously, the ages of samples between dated horizons can be interpolated with reasonable certainty. For these materials, ^{14}C analysis is the primary source of the geochronology. To rate the accuracy of age models from ^{14}C -dated sediment sequences, we developed a procedure that is systematic and reproducible and that focuses on the most important factors that determine the overall accuracy (Appendix A). To facilitate its widespread utility, the simple algorithm is written in the open-source statistical package, R, and is based on the most basic and frequently published information about the materials used for ^{14}C analyses and the resulting age-depth trends. The input variables are: (1) the original ^{14}C ages, including their analytical uncertainties; (2) the age of the core surface (sediment-water interface) if known; (3) sample depths in the core; (4) number of ages rejected by the original author; and (5) material type (one category for the suite of ages; Appendix A).

The accuracy of sedimentary age models depends on the extent to which the constraining ages reliably represent the true timing of sedimentation. The precision of the analyses (the laboratory-reported counting error) might account for only a small part of the overall uncertainty. More important is the extent to which the material dated actually represents the age of the downcore property of interest. Dissolved carbon derived from old sources and incorporated into organisms and minerals that grow in the water (the

so-called “hardwater effect”), or the lag between when an organism grows versus the time it is incorporated into the sedimentary sequence (built-in age) can result in ages that are older than the true age, whereas post-depositional contamination by younger carbon can result in ages that are too young. Many studies have demonstrated the systematic offset between ^{14}C ages of bulk sediment versus the ages of plant macrofossils and tephra layers that they contain (e.g. Wolfe et al., 2004; Grimm et al., 2009). The carbon within bulk sediment may be derived from multiple sources, some of which can be much older than the time of final deposition at the lake or ocean floor. For dating of marine sediments with ^{14}C , determining the marine reservoir effect at a given location through time is an additional challenge. This uncertainty, which is caused by the mixing of old deep water with younger shallow water, may be on the order of several hundreds of years. Identification of well-dated tephras has overcome this problem in some cases.

The accuracy of the geochronology is also determined by the number of ages used to delineate the trend in sedimentation rate relative to the extent to which the sedimentation rate varies at a core site. Where sediment accumulates uniformly through time, fewer ages are needed to determine the trend than for basins that experience variable sedimentation rates. Previous studies that have included an assessment of geochronological accuracy have relied on the difference between the age of the nearest dated sample and the event of interest (e.g. Blois et al., 2011). This strategy is difficult to implement for studies that do not focus on a particular time slice. In addition, the approach assumes that each ^{14}C age is equally accurate, rather than assuming that different ages might have different accuracies and that the overall trend defined by several ages might average out the random errors or shift a biased age toward the more accurate ages in a series.

The chron scores for the 147 age models in the database range from -4.2 to 6.9 and average 0.8 ± 2.1 (1σ), with higher values signifying more accurate age models (Table 1). Using the weighting factors listed in Appendix A, the chron scores correlate about equally with the delineation of the downcore trends (D values; $r = 0.77$) and sample quality (Q values; $r = 0.78$), and less with the precision (P values; $r = 0.53$).

**Arctic Holocene
proxy climate
database**

H. S. Sundqvist et al.

Title Page

Abstract

Introduction

Conclusions

References

Tables

Figures



Back

Close

Full Screen / Esc

Printer-friendly Version

Interactive Discussion



The weightings can be modified to emphasize any of the variables. We recognize that judging the quality of sample material and weighting the various factors that influence accuracy is subjective. Nonetheless, the rating scheme explicitly recognizes the key factors that influence the geochronological accuracy of sedimentary sequences that do not lend themselves to conventional statistical approaches, and assigns reasonable numerical ratings based on a simple, reproducible, and customizable procedure.

5 Database contents

5.1 Number, distribution and resolution of records

The records included in this database were largely identified through literature search as part of previous Arctic Holocene syntheses (e.g. Kaufman et al., 2004; Sundqvist et al., 2010), and from the NOAA Paleoclimatology and PANGAEA databases. We searched these archives for all records located north of 58° N latitude that span from at least 6 to 2 ka, but most of the records did not meet the criteria for inclusion in our database. We considered proxy records from nearly 500 sites (Fig. 2a). Of these, records from 167 sites met the stated criteria (Table 1) and 325 did not (Table S1). Many sites include more than one proxy record and the metadata for each time-series are listed individually in Table 2.

The geographical distribution of the accepted records is far from uniform (Fig. 2b). The density of sites is comparatively high in Fennoscandia (63), Canadian Arctic Archipelago and Greenland (34), Alaska and Yukon (30), and North Atlantic (23). Coverage of sites that meet our criteria in mainland Canada is sparse (12), and we found only a few records in all of the Russian Arctic that meet the specified criteria (5). The lack of available data from the Russian Arctic, the largest Arctic landmass, is striking. Although we reviewed many published climate reconstructions from the region, most had insufficient temporal resolution or geochronological control, and most lack digital data (Kheshgi and Lapenis, 1996). Digitizing the data from the published graphs is not

Arctic Holocene proxy climate database

H. S. Sundqvist et al.

Title Page

Abstract

Introduction

Conclusions

References

Tables

Figures



Back

Close

Full Screen / Esc

Printer-friendly Version

Interactive Discussion



satisfactory because the time-series for many of the Russian Arctic records appear to be drawn by hand rather than by a specified, reproducible mathematical routine, and without displaying the underlying time-series data.

The resolution of a proxy time-series depends on its sample resolution along with the time-averaging inherent within a given proxy. For example, sediment that accumulates in small lakes integrates climate conditions over a longer timescale than does the ice comprising an annual layer of a glacier. While keeping this limitation in mind, we can summarize the temporal resolution of proxy time-series in the database (Fig. 3). Except for the Russian Arctic, records with sub-centennial resolution are available from all regions. At decadal resolution, only eight sites are available. Generally, productivity indicators such as biogenic silica and organic-matter content are more highly resolved than paleoecological data (e.g. pollen, diatoms, chironomids). Areas with comparatively high density of records with decadal resolution include Fennoscandia, Canadian Arctic Archipelago and Greenland, and Alaska and Yukon.

5.2 Proxy types

The database includes records from all types of natural archives that have been analyzed for a variety of physical and biological properties. Each proxy has a characteristic response time and sensitivity to climatic variations, and each responds to different aspects of climate. Different proxies from the same geological archive can therefore yield different inferences about the nature, timing and magnitude of paleoclimatic change. The types of proxy records and their sources are briefly summarized below.

5.2.1 Lake sediments

Most (60 %) of the records come from lake sediments. Lakes are the most widely distributed source of proxy climate information from the Arctic. They provide a continuous archive of climate-sensitive materials that originated within the lake (e.g. aquatic biota such as diatoms and chironomid remains) or from the surrounding catchment

Arctic Holocene proxy climate database

H. S. Sundqvist et al.

Title Page

Abstract

Introduction

Conclusions

References

Tables

Figures



Back

Close

Full Screen / Esc

Printer-friendly Version

Interactive Discussion



Arctic Holocene proxy climate database

H. S. Sundqvist et al.

Title Page

Abstract

Introduction

Conclusions

References

Tables

Figures



Back

Close

Full Screen / Esc

Printer-friendly Version

Interactive Discussion



(e.g. pollen). Arctic lakes are sensitive to climatic changes because relatively small shifts in e.g. temperature impact duration of ice cover, the radiation and water balance of lakes, and the physical, chemical, and biological characteristics of their catchments, often resulting in major shifts in limnology (e.g. Smol and Douglas, 2007). The records in this database rely on sedimentological, biological, and isotopic indicators including: chironomid, diatom, and pollen assemblages, spectrally-inferred sedimentary chlorophyll *a*, biogenic-silica content, dry bulk density, ostracode magnesium-to-calcium ratio (Mg/Ca), oxygen isotope composition ($\delta^{18}\text{O}$), assemblages of microfossils, and the carbon isotope ratio ($\delta^{13}\text{C}$) of bulk organic matter. Many proxies reflect changes in summer temperatures, a primary control on many physical and biological processes in lakes at high latitudes. Some reflect other aspects of the climate system, including nutrient availability, length of the growing season, length of the ice-free season, windiness, and storm-track trajectories, to name a few. Lakes can also act as a depository for terrestrial-based proxies, such as pollen from arboreal trees or the accumulation of rockflour from glacier runoff that do not reflect changes within the aquatic system. Multi-proxy indicators from both aquatic and terrestrial sources provide independent lines of evidence that can corroborate shifts in Holocene climate.

Chironomids. Chironomids (Diptera: Chironomidae – non-biting midges) spend part of their life cycle in the bottom waters of lakes. Summer temperature is an important driver of chironomid species distributions, and the utility of chironomid larval remains for paleotemperature reconstructions is well established (e.g. Walker, 2001; MacDonald et al., 2009; Eggermont and Heiri, 2012; Brooks et al., 2012). Chironomids are abundant and well preserved in many Arctic lakes, and calibrated chironomid temperature transfer functions have been developed for multiple Arctic regions (e.g. Barley et al., 2006; Brooks and Birks, 2001; Francis et al., 2006). Twenty-five records in this database rely on chironomid species assemblages to develop quantitative mean July air temperature records.

Diatoms. Diatoms (siliceous algae) are commonly studied in Arctic ponds and lakes because they respond quickly and sensitively, although indirectly, to climate change.

**Arctic Holocene
proxy climate
database**

H. S. Sundqvist et al.

Title Page

Abstract

Introduction

Conclusions

References

Tables

Figures



Back

Close

Full Screen / Esc

Printer-friendly Version

Interactive Discussion



In Arctic freshwater systems, ice and snow cover are important ecological factors that influence diatom assemblages and are mediated by climate (e.g. temperature, wind, cloud cover) (Douglas and Smol, 2010). For example, a warmer climate and longer open-water period can result in a shift towards a more species-rich assemblage as new diatom habitats become available, and in deeper lakes, can also result in a change in diatom life strategy from mostly benthic to more planktonic assemblages with increased thermal stability and reduced mixing strength (Smol et al., 2005; Rühland et al., 2008). Diatoms have also been successfully used to track Arctic Holocene tree-line migration through diatom-inferred changes in dissolved organic carbon (DOC) (Rouillard et al., 2011, 2012). For example, warmer temperatures during the Holocene thermal maximum followed by a return to cooler conditions during the Neoglacial, led to the advancement (and then retreat) of needle-leaf trees onto (and from) the catchments of tundra lakes for the first time, thereby increasing (and then decreasing) DOC delivery to the lake (Pienitz et al., 1999).

Pollen. The quantitative reconstruction of a large variety of climate variables has a long history, pioneered by Webb and Bryson (1972), and has been widely applied in the Arctic (e.g. Sawada et al., 1999; Seppä and Birks, 2002; Kerwin et al., 2004; Seppä et al., 2008) and beyond, primarily to reconstruct various parameters relating to temperature and precipitation. The influence of climate on the distribution of plant species and vegetation composition is particularly strong near the distribution limits of plants and in the regions with strong climatic gradients. For example, the position of the Arctic tree line is predominantly controlled by summer warmth and growing season length (Grace et al., 2002; Harsch et al., 2009) and past tree line shifts reflect summer temperature changes. In the Arctic, there are also significant annual or sub-decadal variations in the pollen values, caused by the pollen productivity response to short-term (annual) summer temperature variability (Barnekow et al., 2007; Kuoppamaa et al., 2009).

Production indicators. Longer growing seasons at high latitudes as a result of reduced ice-cover duration have often been associated with increased primary

production in freshwater and marine systems. Biogenic-silica (BSi) content of lake sediment can be used to infer changes in diatom and chrysophyte abundance, which often account for large portions of aquatic primary production and can be analyzed at high resolution (millimeter scale, decadal resolution). For high-latitude lakes, temperature, wind and cloud cover are the major controls for the duration of the ice-free season (Hobbie, 1984; Sagarin and Micheli, 2001), which influences diatom production (e.g. Smol, 1988; Smol and Douglas, 2007) and thus BSi content. Climate-mediated changes in lacustrine aquatic primary production can also be estimated through visible reflectance spectroscopy that enables quantitative inferences of sedimentary chlorophyll *a*, including primary chlorophyll *a* and all its isomers and phaeopigments (Michelutti et al., 2005, 2010).

Stable isotopes. A growing number of studies have demonstrated the utility of the oxygen ($\delta^{18}\text{O}$) and hydrogen (δD) isotopic ratio of organic material and carbonates preserved in lake sediment for reconstructing hydroclimatic changes. Although interpreting the isotopic signal from lake sediment is often complicated because isotope fractionation is also influenced by other factors such as temperature (Leng and Marshall, 2004), the interpretation of downcore trends can be guided by comparing the isotopic records with values analyzed from modern lake water and precipitation in the study area. Most $\delta^{18}\text{O}$ -based lake reconstructions use carbonates associated with calcifying *Chara* algae, but some are based on ostracodes and siliceous diatoms. δD -based reconstructions use leaf wax biomarkers, which can reflect the isotopic composition of local precipitation or lake water.

5.2.2 Marine sediments

The records from marine sediment account for 32% (102), nearly all from the North Atlantic. Of the 26 marine sites included, eleven are represented by time-series for more than one proxy type. Most of these relate to changes in sea surface temperature (SST) or subsurface temperature. Some provide additional information on sea-ice cover occurrence and concentration.

Arctic Holocene proxy climate database

H. S. Sundqvist et al.

Title Page

Abstract

Introduction

Conclusions

References

Tables

Figures



Back

Close

Full Screen / Esc

Printer-friendly Version

Interactive Discussion



Arctic Holocene proxy climate database

H. S. Sundqvist et al.

Title Page

Abstract

Introduction

Conclusions

References

Tables

Figures



Back

Close

Full Screen / Esc

Printer-friendly Version

Interactive Discussion



Diatoms, dinoflagellates and haptophyte algae that relate to phytoplanktic productivity in the photic zone provide information on the properties of the upper water layer and SST. When opal silica is preserved in sediment, diatom assemblages can be used as SST proxy (Koç et al., 1993). Some diatom species are associated with spring sea ice and produce organic biomarkers (IP25) that are used as tracers of seasonal sea-ice occurrence (Belt and Müller, 2013). The proportion of 2 versus 3 double bonds in alkenone derived from haptophyte algae (U_{37}^k) is dependent upon the temperature and can be used to estimate SST, although the occurrence of 4 double bonds that is frequent in polar and subpolar environments may obscure the temperature signal (Rosell-Mélé and McClymont, 2007). Organic-walled dinoflagellate cysts (or dinocyst) resulting from sexual reproduction are usually well preserved in sediment. The distribution of species depends mostly upon the seasonal cycle of temperature and extent of sea-ice cover. Large databases of modern species distributions covering the Northern Hemisphere have enabled MAT reconstructions of sea-surface parameters including SST, salinity and sea-ice cover concentration (de Vernal and Marret, 2007; de Vernal et al., 2001, 2013b).

Planktic foraminifer, which are heterotrophic and stenohaline, often inhabit subsurface waters, especially in polar environment marked by strong stratification of the upper water column (e.g. Kucera, 2007). Hence, $\delta^{18}\text{O}$ values and Mg/Ca values of their shell relate to the properties of sea water at the calcification depth and provide information on the sub-surface temperature and water mass stratification. In temperate to subarctic oceanic environments, planktonic foraminifer may be used for SST estimates based on transfer functions or MAT (Kucera et al., 2005).

Benthic organisms including foraminifera and ostracods (e.g. Jennings et al., 2004; Sejrup et al., 2004; Olafsdottir et al., 2010) can also be used to reconstruct qualitatively the bottom-water temperatures but their interpretation is rarely unequivocal (Seidenkrantz, 2013).

5.2.3 Glacier ice

The database includes 10 ice-core records from Greenland and ice caps in the Canadian Arctic. Geochemical properties such as $\delta^{18}\text{O}$ provide information on the isotopic composition of precipitation, air temperature, and atmospheric circulation at the time of formation, whereas annual layer thickness and structure can provide information on precipitation accumulation rate and annual melting of ice. Annual layer counting provides tight geochronological control that approaches annual resolution.

5.2.4 Speleothems

Speleothems are formed when calcium carbonate precipitates from ground water seeping into limestone caves (Fairchild and Baker, 2012). Stable oxygen and carbon isotopes, trace elements and width of annual lamina are all influenced by surface conditions (e.g. McDermot et al., 2004, 2010; Fairchild et al., 2006) and can be used to infer past changes in temperature, precipitation, and vegetation. The database includes only two speleothem records, both from northern Norway (Lauritzen and Lundberg, 1999; Linge et al., 2009). From this area, a negative relation between temperature and $\delta^{18}\text{O}$ has been inferred.

5.2.5 Peat

Vast peatlands have developed in northern North America and Eurasia since the last glaciation and much of the world's peatlands are in subarctic and boreal regions of Canada, Siberia, Fennoscandia and Alaska. Climate changes can be reconstructed from the degree of peat humification as an indicator of dry/wet mire surface conditions, and from stable isotopes in peat mosses. Proxy records from peat deposits can often provide a higher temporal resolution than sediment records from Arctic lakes and ponds (e.g. Brown et al., 1994; Gaiser and Rühland, 2010). The database includes peat records from five sites: four based on humification indices from Fennoscandia

Arctic Holocene proxy climate database

H. S. Sundqvist et al.

[Title Page](#)

[Abstract](#)

[Introduction](#)

[Conclusions](#)

[References](#)

[Tables](#)

[Figures](#)



[Back](#)

[Close](#)

[Full Screen / Esc](#)

[Printer-friendly Version](#)

[Interactive Discussion](#)



(Borgmark and Wastegård, 2008; Vorren et al., 2007, 2012) and one based on $\delta^{13}\text{C}$ from the Canadian mainland (Tillman et al., 2010).

5.2.6 Tree rings

Tree rings can provide information about past temperatures or moisture, based on measurements of ring widths or maximum latewood density (Jones et al., 2009). Only a few tree-ring records that extend to 6 ka are available from the Arctic (e.g. Grudd et al., 2002; Helama et al., 2002, 2010), all of which are interpreted as records of summer temperature. Using the approach of individual standardization of each tree-ring record, the maximum wavelength of recoverable climatic information is a function of the lengths of the individual tree-ring series and therefore tree-ring width does not express the full range of millennial time-scale temperature variation (e.g. Linderholm et al., 2010; Helema et al., 2012).

5.3 Climate variables

The majority (57 %) of the proxy records in the database have been transformed or calibrated to a specific climate variable. These are based on microfossil assemblages, tree-ring widths, and stable-isotope composition. Most (> 90 %) of the calibrated records in the database use transfer functions or MAT to infer temperature from biological remains. The remaining proxy records indirectly track changes in climate variables and the relation between the proxy and climate variables for these uncalibrated proxies may not be linear.

5.3.1 Temperature

The database includes 114 records of reconstructed terrestrial summer temperature, with an additional 25 records that represent mean annual temperatures and 14 mean

Arctic Holocene proxy climate database

H. S. Sundqvist et al.

Title Page

Abstract

Introduction

Conclusions

References

Tables

Figures

⏪

⏩

◀

▶

Back

Close

Full Screen / Esc

Printer-friendly Version

Interactive Discussion



winter temperature. From the marine sites there are 41 reconstructions of SST and three of bottom-water temperature.

5.3.2 Moisture

Moisture proxies include properties that have been interpreted in terms of the amount of precipitation, effective moisture (precipitation minus evapotranspiration), lake levels, bog-surface wetness, or drought. The database includes 48 moisture records. Quantitative estimates of precipitation are available only from pollen records and glaciolacustrine sediments.

5.3.3 Glacier extent

The equilibrium-line altitude (ELA) of glaciers is controlled by the effect of ablation-season (summer) temperature, which acts to reduce glacier mass (e.g. Koerner, 2005) and winter precipitation (which increases glacier mass). Glaciers advance and retreat in concert with persistent ELA change; glacier size influences the amount and grain-size distribution of sediments carried by meltwater streams. These changes can be detected as changes in the bulk density and organic-matter content of sediment in proglacial lakes (e.g. Bakke et al., 2005). The ELA records are all from western Norway and carry a strong winter signal as these glaciers are mainly controlled (60–80 %) by change in snow accumulation (Nesje and Matthews, 2011).

5.3.4 Atmospheric circulation

For high-latitude lakes not sensitive to evaporation, the $\delta^{18}\text{O}$ of carbonates, diatoms, or cellulose can be used as a proxy for past changes in the $\delta^{18}\text{O}$ of precipitation (Leng and Marshall, 2004; Jonsson et al., 2010). The $\delta^{18}\text{O}$ of precipitation preserved in glacier ice from this region is generally used as a proxy for paleotemperature (Vinther et al., 2010) but in some areas (e.g. Yukon) it is more sensitive to the water-cycle history and can be used as a proxy for source region (e.g. Fisher et al., 2008). Because different

Arctic Holocene proxy climate database

H. S. Sundqvist et al.

Title Page

Abstract

Introduction

Conclusions

References

Tables

Figures



Back

Close

Full Screen / Esc

Printer-friendly Version

Interactive Discussion



air masses usually have distinct isotopic compositions, these records can give insights into past changes in atmospheric circulation. Oxygen isotope records have, for example, been used to reconstruct Holocene changes in the intensity and position of the Aleutian Low pressure system (Schiff et al., 2008) and the strength of the North Atlantic Oscillation (NAO) (e.g. Hammarlund et al., 2002). The database contains seven $\delta^{18}\text{O}$ records interpreted to reflect atmospheric circulation.

6 Concluding remarks

Proxy climate records from the 167 sites that meet the criteria for this database form a network for investigating the spatial-temporal structure of Holocene climate changes in the Arctic, at least on sub-millennial time scales. On centennial time scales, the number of records with the appropriate resolution and geochronological control is more limited, but probably sufficient for discerning centennial-scale patterns in most regions (Figs. 3 and 4). Overall, records from 43 % of the sites across all regions have both an average resolution better than 100 yr and a chron score higher than 0 (an arbitrary cutoff that includes 62 % of the ^{14}C -dated sites). In Fennoscandia, where the density of sites is highest, only 35 % of the sites meet this standard, compared with 40–67 % for the Canadian islands and Greenland, mainland Canada, and the North Atlantic. In Alaska and Yukon, the distribution of resolutions is bimodal, subdivided between sites with pollen records versus non-pollen records. No proxy records meet this standard in the Russian Arctic. On decadal time scales, the number of records is presently too few to discern significant patterns, especially when considering limitations related to geochronology and proxy bias, which can include leads and lags relative to the climate forcing.

We suggest that this systematic review of the full range of marine and terrestrial proxy climate time series sets a new standard for Holocene proxy climate databases. It is based on quantitative screening criteria with new approaches for assessing the geochronological accuracy of age models and for characterizing the climate variables

CPD

10, 1–63, 2014

Arctic Holocene proxy climate database

H. S. Sundqvist et al.

Title Page

Abstract

Introduction

Conclusions

References

Tables

Figures



Back

Close

Full Screen / Esc

Printer-friendly Version

Interactive Discussion



represented by the proxies. Records from only 22 of the 167 sites (13%) included in this database could be found in the primary paleoclimate data repositories, underscoring the important role of community-based, expert-informed efforts to assembling a comprehensive product. The machine-readable database includes multiple parameters for searching and screening records that should enable new analyses of Holocene climate variability in the Arctic and to identify future research priorities.

Appendix A

Geochronology accuracy score

The geochronology accuracy score (chron score) combines three indicators of the reliability of sediment-based age models, namely: the delineation (D) of the downcore trend, the quality (Q) of the dated samples, and the (P) precision of the ^{14}C ages.

Delineation of downcore trend. The accuracy of an age model depends on how well the analyzed samples delineate changes in sedimentation rate downcore. If the sedimentation rate is linear, then only two ages are needed to define it. With increasing variability of sedimentation rates, more ages are required to delineate accurately the downcore trend. In absence of stratigraphic information that attests to where within a sequence the sedimentation rate is most likely to have changed, evenly spaced samples increase the chances of capturing changes in sedimentation rate compared with the same number of ages clustered in small intervals. We therefore assess the extent to which an age model is accurately delineated by combining three attributes: (1) the frequency of ages, (2) the regularity of their spacing, and (3) the uniformity of the downcore trend.

The frequency of ages (f) is quantified as the number of ages relative to the length of time represented by the sedimentary sequence, or:

$$f = (t_{\max} - t_{\min}) / n_{\text{tot}}$$

Arctic Holocene proxy climate database

H. S. Sundqvist et al.

Title Page

Abstract

Introduction

Conclusions

References

Tables

Figures



Back

Close

Full Screen / Esc

Printer-friendly Version

Interactive Discussion



Where t_{\max} and t_{\min} are the oldest and youngest ages, respectively, and n_{tot} is the total number of ages that were accepted by the author of the age model. The age of the core surface is included if the sediment-water interface was captured at the time of coring.

The regularity (r) of a series of ages is quantified by the standard deviation of the length of time that separates consecutive ages, or:

$$r = \sigma[t_n - t_{n+1}]$$

Where σ is the standard deviation, and $t_n - t_{n+1}$ is the difference in time between the n th age and the next older age, as assessed for each age in a series. The absolute value is used for downcore age reversals.

The uniformity (u) of the trend is quantified as the root mean standard error (RMSE) with respect to a cubic smoothing spline with degree of freedom (df) = 4. If the spine fit contains a reversal, then the df is lowered incrementally until there are no reversals in the spline fit.

The three attributes that make up the age-model delineation (D) can each be weighted to adjust their relative importance in the overall D score:

$$D = w_f f + w_r r + w_u u$$

where w_f , w_r , and w_u are weighting factors. Because the frequency of ages is fundamental to the accuracy of the age model, and because the RMSE is generally a low value, we chose to increase their weight in the overall score. Namely, we set the weighting factors = 2, 0.5, and 3, respectively. The D value increases with decreasing delineation.

Reliability of dated samples. The accuracy of age models generally depends on the type of material analyzed, with some material types typically yielding ages that more closely represent the timing of deposition than others (e.g. Wolfe et al., 2004). In addition, the influence of contamination by young carbon, or the reworking of older material into younger sediment is often indicated by ages that violate stratigraphic superposition. We therefore assess the “quality” of dated materials based on two criteria: (1) the

Arctic Holocene
proxy climate
database

H. S. Sundqvist et al.

Title Page

Abstract

Introduction

Conclusions

References

Tables

Figures



Back

Close

Full Screen / Esc

Printer-friendly Version

Interactive Discussion



proportion of outliers and stratigraphically reversed ages, and (2) a qualitative (categorical) score based on the type of material dated.

Standard practice is to report the results of all radiocarbon analyses from a core or series of cores, then to identify and exclude the outliers if they exist. These analyses are indicated as rejected by the authors of the original age model. Minor age reversals are often retained in the age model, and the sedimentation-rate smoothing function is used to average the differences. In our scoring scheme, the proportion (p) of outlier and stratigraphically reversed ages is the number of ages that were rejected by the original author, plus the number of stratigraphically reversed ages relative to the total number of dated samples, or:

$$p = 1 - (n_{\text{rej}} + n_{\text{rev}}) / n_{\text{tot}}$$

where n_{rej} is the number of ages rejected by the original author and therefore not included in the list of ages used to calculate the delineation (D) score, n_{rev} is the number of ages that are at least 100 year older than the next age downcore. The proportion is subtracted from 1 so that higher p values signify a higher proportion of accepted and monotonically arranged ages.

We developed a five-fold classification scheme for the types of material (m) used for the ^{14}C analyses. A value of 1 through 5 is assigned to the entire series of samples, depending largely on the extent to which they comprise reliable types of sample material based on a specific set of criteria (see below). A value of 5 is reserved for age models that have been checked by independently derived ages from correlated tephra layers or ^{14}C wiggle matching. Separate classification schemes were developed for lacustrine and marine materials. m values for lacustrine materials:

5 = at least one age can be confirmed by tephra or ^{14}C wiggle matches; no bulk-sediment

4 = mainly (> 90 %) plant macrofossils

3 = 50–90 % plant macrofossils; bulk-sediment ages can be reasonably adjusted

Arctic Holocene
proxy climate
database

H. S. Sundqvist et al.

Title Page

Abstract

Introduction

Conclusions

References

Tables

Figures



Back

Close

Full Screen / Esc

Printer-friendly Version

Interactive Discussion



2 = < 50 % plant macrofossils

1 = all bulk-sediment ages

m values for marine materials:

5 5 = > 90 % whole, monospecific forams with a constrained reservoir age (at least one well-dated tephra or wiggle match used to determine the reservoir correction)

4 = mainly (> 90 %) monospecific forams

3 = > 50 % monospecific forams and articulated mollusks

2 = mixture of sample types: fragmented and whole; monospecific and mixed species

10 1 = mainly (> 90 %) fragmented and unidentifiable tests and shells

To derive a single value for the quality (*Q*) of the dated samples, we take the product of the two attributes, the proportion (*p*) of accepted, monotonic ages, and the material (*m*) type category, or:

$$Q = pm$$

15 *Q* values increase with increasing sample quality.

Precision. All radiocarbon laboratories report the $\pm 1\sigma$ analytical precision associated with the internal reproducibility of the counting statistics for ^{14}C ages. The analytical precision is controlled by the mass of carbon used for AMS analysis, or the activity of the sample used for decay counting methods, and the length of time that the sample is analyzed on the instrument. The extent to which the overall accuracy of an age model is influenced by the analytical precision is difficult to quantify. In general, analytical precision is on the order of decades, but the uncertainty is amplified when calibrated to

Arctic Holocene proxy climate database

H. S. Sundqvist et al.

Title Page

Abstract

Introduction

Conclusions

References

Tables

Figures



Back

Close

Full Screen / Esc

Printer-friendly Version

Interactive Discussion



calendar years. We developed a simple index for the precision (P), which is based on calibrated age ranges of the ^{14}C ages using the INTCAL04 calibration dataset.

$$P = s^{-1}$$

where s is the mean 2σ range of all calibrated ^{14}C ages. The inverse function is used to stratify the precision scores over the most precise end of the range (decadal scale) while de-emphasizing the differences among the less-precise ages (centennial scale). P values increase with increasing precision.

Geochronology accuracy score. The overall score (G , chron score) is calculated by summing the weighted values of each of the three components:

$$G = -w_D D + w_Q Q + w_P P$$

Where w_D , w_Q , and w_P are the weighting factors, which we set = 0.001, 1 and 200, respectively, so that each component is of the same order of magnitude.

Supplementary material related to this article is available online at <http://www.clim-past-discuss.net/10/1/2014/cpd-10-1-2014-supplement.zip>.

Acknowledgements. We thank the following for their valued input: A. Andreev, N. Bigelow, Á. Geirsdóttir, A. Henderson, F. S. Hu, K. Gible, G. H. Miller, L. Srykh, M. Wooller, Z. Yu, and the many colleagues who kindly made digital versions of their data available for this product. We are grateful to the IGBP – Past Global Changes (PAGES) International Project Office in Bern, Switzerland for hosting D. S. Kaufman as a visiting scientist during the initial stages of this compilation, and for facilitating project meetings. This project was funded by NSF-ARC-1107869 and 0909332.

Arctic Holocene
proxy climate
database

H. S. Sundqvist et al.

Title Page

Abstract

Introduction

Conclusions

References

Tables

Figures



Back

Close

Full Screen / Esc

Printer-friendly Version

Interactive Discussion



Author contributions. D. S. Kaufman led the project; H. S. Sundqvist and D. S. Kaufman wrote the manuscript; H. S. Sundqvist, D. S. Kaufman, N. L. Balascio and N. P. McKay designed the database and assembled and formatted the data; D. S. Kaufman and N. P. McKay developed the geochronology accuracy score, with assistance from A. E. Jennings and J. T. Andrews for categorizing marine material types; N. P. McKay developed the climate-variable interpretation scheme; J. P. Briner, L. C. Cwynar, H. P. Sejrup, H. Seppä and D. A. Subetto led the regional teams in their evaluations of all available proxy records; all co-authors helped identify and assemble the proxy data; all co-authors checked the accuracy and completeness of the database and contributed to manuscript preparation.

References

- Adams, J. K. and Finkelstein, S. A.: Watershed-scale reconstruction of middle and late Holocene paleoenvironmental changes on Melville Peninsula, Nunavut, Canada, *Quaternary Sci. Rev.*, 29, 2302–2314, 2010.
- Allen, J. R. M., Long, A. J., Ottley, C. J., Graham Pearson, D., and Huntley, B.: Holocene climate variability in northernmost Europe, *Quaternary Sci. Rev.*, 26, 1432–1453, 2007.
- Alley, R. B.: The Younger Dryas cold interval as viewed from central Greenland, *Quaternary Sci. Rev.*, 19, 213–226, 2000.
- Anderson, L., Abbott, M. B., Finney, B. P., and Burns, S. J.: Regional atmospheric circulation change in the North Pacific during the Holocene inferred from lacustrine carbonate oxygen isotopes, Yukon Territory, Canada, *Quaternary Res.*, 64, 21–35, 2005.
- Anderson, N. J., Liversidge, A. C., McGowan, S., and Jones, M. D.: Lake and catchment response to Holocene environmental change: spatial variability along a climate gradient in southwest Greenland, *J. Paleolimnol.*, 48, 209–222, 2012.
- Andersson, C., Risebrobakken, B., Jansen, E., and Dahl, S. O.: Late Holocene surface ocean conditions of the Norwegian Sea (Vøring Plateau), *Paleoceanography*, 18, 179–193, 2003.
- Andreev, A. A., Tarasov, P. E., Ilyashuk, B. P., Ilyashuk, E. A., Cremer, H., Hermichen, W.-D., Wischer, F., and Hubberten, H.-W.: Holocene environmental history recorded in Lake Lyadhej-To sediments, Polar Urals, Russia, *Palaeogeogr. Palaeoecol.*, 223, 181–203, 2005.

Arctic Holocene proxy climate database

H. S. Sundqvist et al.

Title Page

Abstract

Introduction

Conclusions

References

Tables

Figures



Back

Close

Full Screen / Esc

Printer-friendly Version

Interactive Discussion



Antonsson, K., Brooks, S. J., Seppä, H., Telford, R. J., and Birks, H. J. B.: Quantitative palaeotemperature records inferred from fossil pollen and chironomid assemblages from Lake Giltjärnen, northern central Sweden, *J. Quaternary Sci.*, 21, 831–841, 2006.

Antonsson, K. and Seppä, H.: Holocene temperatures in Bohuslän, southwest Sweden: a quantitative reconstruction from fossil pollen data, *Boreas*, 36, 400–410, 2007.

Axford, Y., Losee, S., Briner, J. P., Francis, D. R., Langdon, P. G., and Walker, I. R.: Holocene temperature history at the western Greenland Ice Sheet margin reconstructed from lake sediments, *Quaternary Sci. Rev.*, 59, 87–100, 2013.

Bakke, J., Dahl, S. O., Paasche, Ø., Riis Simonsen, J., Kvisvik, B., Bakke, K., and Nesje, A.: A complete record of Holocene glacier variability at Austre Okstindbreen, northern Norway: an integrated approach, *Quaternary Sci. Rev.*, 29, 1246–1262, 2010.

Bakke, J., Lie, Ø., Nesje, A., Dahl, S. O., and Paasche, Ø.: Utilizing physical sediment variability in glacier-fed lakes for continuous glacier reconstructions during the Holocene, northern Folgefonna, western Norway, *Holocene*, 15, 161–176, 2005.

Balascio, N. and Bradley, R.: Evaluating Holocene climate change in northern Norway using sediment records from two contrasting lake systems, *J. Paleolimnol.*, 48, 259–273, 2012.

Balascio, N. L., D'Andrea, W. J., Bradley, R. S., and Perren, B. B.: Biogeochemical evidence for hydrologic changes during the Holocene in a lake sediment record from southeast Greenland, *Holocene*, 23, 1428–1439, 2013.

Barley, E. M., Walker, I. R., Kurek, J., Cwynar, L. C., Mathewes, R. W., Gajewski, K., and Finney, B.: A northwest North America training set: distribution of freshwater midges in relation to air temperature and lake depth, *J. Paleolimnol.*, 36, 295–314, 2006.

Barnekow, L., Loader, N. J., Hicks, S., Froyd, C. A., and Goslar, T.: Strong correlation between summer temperature and pollen accumulation rates for *Pinus sylvestris*, *Picea abies* and *Betula* spp. in a high-resolution record from northern Sweden, *J. Quaternary Sci.*, 22, 653–658, 2007.

Barnekow, L., Possnert, G., and Sandgren, P.: AMS 14C chronologies of Holocene lake sediments in the Abisko area, northern Sweden – a comparison between dated bulk sediment and macrofossil samples, *GFF*, 120, 59–67, 1998.

Bartlein, P. J., Harrison, S. P., Brewer, S., Connor, S., Davis, B. A. S., Gajewski, K., Guiot, J., Harrison-Prentice, T. I., Henderson, A. O., Peyron, A. H., Prentice, I. C., Scholze, M., Seppä, H., Shuman, B., Sugita, S., Thompson, R. S., Viau, A. E., Williams, J., and Wu, H.:

Arctic Holocene proxy climate database

H. S. Sundqvist et al.

Title Page

Abstract

Introduction

Conclusions

References

Tables

Figures

◀

▶

◀

▶

Back

Close

Full Screen / Esc

Printer-friendly Version

Interactive Discussion



Pollen-based continental climate reconstructions at 6 and 21 ka: a global synthesis, *Clim. Dynam.*, 37, 775–802, 2011.

Belt, S. T. and Müller, J.: The Arctic sea ice biomarker IP25: a review of current understanding, recommendations for future research and applications in palaeo sea ice reconstructions, *Quaternary Sci. Rev.*, 79, 9–25, 2013

Belt, S. T., Vare, L. L., Massé, G., Manners, H. R., Price, J. C., MacLachlan, S. E., Andrews, J. T., and Schmidt, S.: Striking similarities in temporal changes to spring sea ice occurrence across the central Canadian Arctic Archipelago over the last 7000 years, *Quaternary Sci. Rev.*, 29, 3489–3504, 2010.

Bender, M. M., Bryson, R. A., and Baerreis, D. A.: University of Wisconsin radiocarbon dates III, *Radiocarbon*, 9, 530–544, 1967.

Bendle, J. A. P. and Rosell-Melé, A.: High-resolution alkenone sea surface temperature variability on the North Icelandic Shelf: implications for Nordic Seas palaeoclimatic development during the Holocene, *Holocene*, 17, 9–24, 2007.

Berner, K. S., Koç, N., Divine, D., Godtliobsen, F., and Moros, M.: A decadal-scale Holocene sea surface temperature record from the subpolar North Atlantic constructed using diatoms and statistics and its relation to other climate parameters, *Paleoceanography* 23, PA2210, doi:10.1029/2006PA001339, 2008.

Berner, K. S., Koç, N., and Godtliobsen, F.: High frequency climate variability of the Norwegian Atlantic Current during the early Holocene period and a possible connection to the Gleissberg cycle, *Holocene*, 20, 245–255, 2010.

Bigelow, N. H., Linda, B. Brubaker, L. B., Mary, E., Edwards, M. E., Sandy, P., Harrison, S. P., Prentice, C. I., Anderson, P. M. Andreev, A. A., Bartlein, P. J., Christensen, T. R., Cramer, W., Kaplan, J. O., Lozhkin, A. V., Matveyeva, N. V., Murray, D. F., McGuire, A. D., Razzhivin, V. Y., Ritchie, J. C., Smith, B., Walker, D. A., Gajewski, K., Wolf, V., Holmqvist, B. H., Igarashi, Y., Kremenetskii, K., Aage, P., Pisaric, M. F. J., and Volkova, V. S.: Climate change and Arctic ecosystems: 1. Vegetation changes north of 55° N between the last glacial maximum, mid-Holocene, and present, *J. Geophys. Res.*, 108, 8170, doi:10.1029/2002JD002558, 2003.

Bigler, C., Barnekow, L., Heinrichs, M., and Hall, R.: Holocene environmental history of Lake Vuolep Njakajaure (Abisko National Park, northern Sweden) reconstructed using biological proxy indicators, *Veg. Hist. Archeobotany*, 15, 309–320, 2006.

Arctic Holocene proxy climate database

H. S. Sundqvist et al.

Title Page

Abstract

Introduction

Conclusions

References

Tables

Figures

◀

▶

◀

▶

Back

Close

Full Screen / Esc

Printer-friendly Version

Interactive Discussion



- Bigler, C., Grahn, E., Larocque, I., Jeziorski, A., and Hall, R.: Holocene environmental change at Lake Njulla (999 m a.s.l.), northern Sweden: a comparison with four small nearby lakes along an altitudinal gradient, *J. Paleolimnol.*, 29, 13–29, 2003.
- Bigler, C., Larocque, I., Peglar, S. M., Birks, H. J. B., and Hall, R. I.: Quantitative multiproxy assessment of long-term patterns of Holocene environmental change from a small lake near Abisko, northern Sweden, *Holocene*, 12, 481–496, 2002.
- Birks, H. J. B., Heiri, O., Seppä, H., and Bjune, A. E.: Strengths and weaknesses of quantitative climate reconstructions based on late-Quaternary biological proxies, *The Open Ecol. J.*, 3, 68–110, 2010.
- Biskaborn, B. K., Herzschuh, U., Bolshiyarov, D., Savelieva, L., and Diekmann, B.: Environmental variability in northeastern Siberia during the last ~13,300 yr inferred from lake diatoms and sediment–geochemical parameters, *Palaeogeogr. Palaeoecol.*, 329–330, 22–36, 2012.
- Bjune, A. E., Bakke, J., Nesje, A., and Birks, H. J. B.: Holocene mean July temperature and winter precipitation in western Norway inferred from palynological and glaciological lake-sediment proxies, *Holocene*, 15, 177–189, 2005.
- Bjune, A. E. and Birks, H. J. B.: Holocene vegetation dynamics and inferred climate changes at Svanåvatnet, Mo i Rana, northern Norway, *Boreas*, 37, 146–156, 2008.
- Bjune, A. E., Birks, H. J. B., and Seppä, H.: Holocene vegetation and climate history on a continental-oceanic transect in northern Fennoscandia based on pollen and plant macrofossils, *Boreas*, 33, 211–223, 2004.
- Blois, J. L., Williams, J. W., Grimm, E. C., Jackson, S. T., and Graham, R. W.: A methodological framework for assessing and reducing temporal uncertainty in paleovegetation mapping from late-Quaternary pollen records, *Quaternary Sci. Rev.*, 30, 1926–1939, 2011.
- Borgmark, A. and Wastegård, S.: Regional and local patterns of peat humification in three raised peat bogs in Värmland, south-central Sweden, *GFF*, 130, 161–176, 2008.
- Brooks, S. J.: Fossil midges (Diptera: Chironomidae) as palaeoclimatic indicators for the Eurasian region, *Quaternary Sci. Rev.*, 25, 1894–1910, 2006.
- Brooks, S. J. and Birks, H. J. B.: Chironomid-inferred air temperatures from late-glacial and Holocene sites in north-west Europe: Progress and problems, *Quaternary Sci. Rev.*, 20, 1723–1741, 2001.
- Brooks, S. J., Axford, Y., Heiri, O., Langdon, P. G. and Larocque-Tobler, I.: Chironomids can be reliable proxies for Holocene temperatures. A comment on Velle et al. 2010, *Holocene*, 22, 1482–1494, 2012.

Arctic Holocene proxy climate database

H. S. Sundqvist et al.

Title Page

Abstract

Introduction

Conclusions

References

Tables

Figures



Back

Close

Full Screen / Esc

Printer-friendly Version

Interactive Discussion

- Brown, K. M., Douglas, M. S. V., and Smol, J. P.: Siliceous microfossils in a Holocene High Arctic peat deposit (Nordvestø, northern Greenland), *Can. J. Bot.*, 72, 208–216, 1994.
- Brubaker, L. B., Garfinkee, H. L., and Edwards, M. E.: A late Wisconsin and Holocene vegetation history from the central Brooks Range: implications for Alaskan palaeoecology, *Quaternary Res.*, 20, 194–214, 1983.
- Bunbury, J. and Gajewski, K.: Postglacial climates inferred from a lake at treeline, southwest Yukon Territory, Canada, Special Theme: Modern Analogues in Quaternary Palaeoglaciological Reconstruction, (181–260 pp.), 28, 354–369, 2009.
- CAPE Project Members: Holocene paleoclimate data from the Arctic: testing models of global climate change, *Quaternary Sci. Rev.*, 210, 1275–1287, 2001.
- Calvo, E., Grimalt, J., and Jansen, E.: High resolution UK37 sea surface temperature reconstruction in the Norwegian Sea during the Holocene, *Quaternary Sci. Rev.*, 21, 1385–1394, 2002.
- Came, R. E., Oppo, D. W., and McManus, J. F.: Amplitude and timing of temperature and salinity variability in the subpolar North Atlantic over the past 10 k.y, *Geology*, 35, 315–318, 2007.
- Camill, P., Umbanhowar, C., Jr., Geiss, C., Hobbs, W., Edlund, M., Shinneman, A., Dorale, J., and Lynch, J.: Holocene climate change and landscape development from a low-Arctic tundra lake in the western Hudson Bay region of Manitoba, Canada, *J. Paleolimnol.*, 48, 175–192, 2012.
- Chakraborty, K., Finkelstein, S. A., Desloges, J. R., and Chow, N. A.: Holocene paleoenvironmental changes inferred from diatom assemblages in sediments of Kusawa Lake, Yukon Territory, Canada, *Quaternary Res.*, 74, 15–22, 2010.
- Clegg, B. F., Clarke, G. H., Chipman, M. L., Chou, M., Walker, I. R., Tinner, W., and Hu, F. S.: Six millennia of summer temperature variation based on midge analysis of lake sediments from Alaska, *Quaternary Sci. Rev.*, 29, 3308–3316, 2010.
- Clegg, B. F. and Hu, F. S.: An oxygen-isotope record of Holocene climate change in the south-central Brooks Range, Alaska, *Quaternary Sci. Rev.*, 29, 928–939, 2010.
- Clegg, B. F., Kelly, R., Clarke, G. H., Walker, I. R., and Hu, F. S.: Nonlinear response of summer temperature to Holocene insolation forcing in Alaska, *P. Natl. Acad. Sci. USA*, 108, 19299–19304, 2011.
- Cwynar, L. C.: A late Quaternary vegetation history from Lily Lake, Chilkat Peninsula, southeast Alaska, *Can. J. Bot.*, 68, 1106–1112, 1990.

Arctic Holocene proxy climate database

H. S. Sundqvist et al.

Title Page

Abstract

Introduction

Conclusions

References

Tables

Figures



Back

Close

Full Screen / Esc

Printer-friendly Version

Interactive Discussion



- Cwynar, L. C.: Paleovegetation and paleoclimatic changes in the Yukon at 6 ka BP, *Geogr. Phys. Quatern.*, 49, 29–35, 1995.
- Cwynar, L. C. and Spear, R. W.: Reversion of Forest to Tundra in the Central Yukon, *Ecology*, 72, 202–212, 1991.
- 5 Cwynar, L. C. and Spear, R. W.: Paleovegetation and Paleoclimatic Changes in the Yukon at 6 ka BP, *Geogr. Phys. Quatern.*, 49, 29–35, 1995.
- D'Andrea, W. J., Huang, Y., Fritz, S. C., and Anderson, N. J.: Abrupt Holocene climate change as an important factor for human migration in West Greenland, *P. Natl. Acad. Sci. USA*, 108, 9765–9769, 2011.
- 10 Davis, P. T.: Holocene vegetation and climate record from Iglutalik Lake, Cumberland Sound, Baffin Island, Northwest Territories, Canada, Ph.D. Thesis, University of Colorado, Boulder, 1980.
- de Vernal, A. and Hillaire-Marcel, C.: Provincialism in trends and high frequency changes in the northwest North Atlantic during the Holocene, *Global Planet. Change*, 54, 263–290, 2006.
- 15 de Vernal, A., Hillaire-Marcel, C., and Darby, D.: Variability of sea ice cover in the Chukchi Sea (western Arctic Ocean) during the Holocene. *Paleoceanography*, 20, PA4018, doi:10.1029/2005PA001157, 2005.
- de Vernal, A., Henry, M., Matthiessen, J., Mudie, P.J., Rochon, A., Boessenkool, K., Eynaud, F., Grøsfjeld, K., Guiot, J., Hamel, D., Harland, R., Head, M.J., Kunz-Pirrung, M., Levac, E., Loucheur, V., Peyron, O., Pospelova, V., Radi, T., Turon, J.-L., and Voronina, E.: Dinoflagellate cyst assemblages as tracers of sea-surface conditions in the northern North Atlantic, Arctic and sub-Arctic seas: the new “n = 677” database and application for quantitative paleoceanographical reconstruction, *J. Quaternary Sci.*, 16, 681–699, 2001.
- 20 de Vernal, A., Hillaire-Marcel, C., Rochon, A., Fréchette, B., Henry, M., Solignac, S., and Bonnet, S.: Dinocyst-based reconstructions of sea ice cover concentration during the Holocene in the Arctic Ocean, the northern North Atlantic Ocean and its adjacent seas, *Quaternary Sci. Rev.*, 79, 111–121, 2013a.
- de Vernal, A., Rochon, A., Fréchette, B., Henry, M., Radi, T., and Solignac, S.: Reconstructing past sea ice cover of the Northern hemisphere from dinocyst assemblages : status of the approach, *Quaternary Sci. Rev.*, 79, 122–134, 2013b.
- 30 Douglas, M. S. V. and Smol, J. P.: Freshwater diatoms as indicators of environmental change in the High Arctic, in: *The Diatoms: Applications for the Environmental and Earth Sciences*,

Arctic Holocene proxy climate database

H. S. Sundqvist et al.

Title Page

Abstract

Introduction

Conclusions

References

Tables

Figures

◀

▶

◀

▶

Back

Close

Full Screen / Esc

Printer-friendly Version

Interactive Discussion

2nd Edn., edited by Smol, J. P. and Stoermer, E. F., Cambridge University Press, 249–266, 2010.

Eggermont, H. and Heiri, O.: The chironomid-temperature relationship: expressions in nature and palaeoenvironmental implications, *Biol. Rev.*, 87, 430–456, 2012.

5 Eide, W., Birks, H., Bigelow, N., Peglar, S., and Birks, H. J.: Holocene forest development along the Setesdal valley, southern Norway, reconstructed from macrofossil and pollen evidence, *Veg. Hist. Archaeobot.*, 15, 65–85, 2006.

Emile-Geay, J. and Eshleman, J. A.: Toward a semantic web of paleoclimatology, *Geochem. Geophys. Geosyst.*, 14, 457–469, doi:10.1002/ggge.20067, 2013.

10 Fairchild, I. J. and Baker, A.: *Speleothem Science: From Process to Past Environments*, Wiley-Blackwell, 416 pp., 2012.

Fairchild, I. J., Smith, C. L., Baker, A., Fuller, L., Spötl, C., Matthey, D., and McDermott, F.: Modification and preservation of environmental signals in speleothems, *Earth-Sci. Rev.*, 75, 105–153, 2006.

15 Fallu, M.-A., Pienitz, R., Walker, I. R., and Lavoie, M.: Paleolimnology of a shrub-tundra lake and response of aquatic and terrestrial indicators to climatic change in arctic Québec, Canada, *Palaeogeogr. Palaeoecol.*, 215, 183–203, 2005.

Farmer, J. R., Cronin, T. M., de Vernal, A., Dwyer, G. S., Keigwin, L. D., and Thunell, R. C.: Western Arctic Ocean temperature variability during the last 8000 years, *Geophys. Res. Lett.*, 38, L24602, doi:10.1029/2011GL049714, 2011.

20 Finney, B., Bigelow, N., Barber, V., and Edwards, M.: Holocene climate change and carbon cycling in a groundwater-fed, boreal forest lake: Dune Lake, Alaska, *J. Paleolimnol.*, 48, 43–54, 2012.

Fisher, D., Osterberg, E., Dyke, A., Dahl-Jensen, D., Demuth, M., Zdanowicz, C., Bourgeois, J., Koerner, R. M., Mayewski, P., Wake, C., Kreutz, K., Steig, E., Zheng, J., Yalcin, K., Goto-Azuma, K., Luckman, B., and Rupper, S.: The Mt Logan Holocene – late Wisconsinan isotope record: tropical Pacific – Yukon connections, *Holocene*, 18, 667–677, 2008.

25 Fisher, D. A., Koerner, R. M., Bourgeois, J. C., Zielinski, G., Wake, C., Hammer, C. U., Clausen, H. B., Gundestrup, N., Johnsen, S., Goto-Azuma, K., Hondoh, T., Blake, E., and Gerasimoff, M.: Penny Ice Cap Cores, Baffin Island, Canada, and the Wisconsinan Foxe Dome Connection: Two States of Hudson Bay Ice Cover, *Science*, 279, 692–695, 1998.

30

Arctic Holocene proxy climate database

H. S. Sundqvist et al.

Title Page

Abstract

Introduction

Conclusions

References

Tables

Figures

◀

▶

◀

▶

Back

Close

Full Screen / Esc

Printer-friendly Version

Interactive Discussion

Fisher, D. A., Koerner, R. M., Paterson, W. S. B., Dansgaard, W., Gundestrup, N., and Reeh, N.: Effect of wind scouring on climatic records from ice-core oxygen-isotope profiles, *Nature*, 301, 205–209, 1983.

Francis, D. R., Wolfe, A. P., Walker, I. R., and Miller, G. H.: Interglacial and Holocene temperature reconstructions based on midge remains in sediments of two lakes from Baffin Island, Nunavut, Arctic Canada, *Palaeogeogr. Palaeoecol.*, 236, 107–124, 2006.

Gaiser, E. and Rühland, K.: Diatoms as indicators of environmental change in wetlands and peatlands, in: *The Diatoms: Applications for the Environmental and Earth Sciences*, 2nd Edn., edited by: Smol, J. P. and Stoermer, E. F., Cambridge University Press, Cambridge, 473–496, 2010.

Gajewski, K., Payette, S., and Ritchie, J. C.: Holocene Vegetation History at the Boreal-Forest-Shrub-Tundra Transition in North-Western Quebec, *J Ecology*, 81, 433–443, 1993.

Geirsdóttir, Á., Miller, G. H., Larsen, D. J., and Ólafsdóttir, S.: Abrupt Holocene climate transitions in the northern North Atlantic region recorded by synchronized lacustrine records in Iceland, *Quaternary Sci. Rev.*, 70, 48–62, 2013.

Giraudeau, J., Cremer, M., Manthe, S., Labeyrie, L., and Bond, G.: Coccolith evidence for instabilities in surface circulation south of Iceland during Holocene times, *Earth Planet Sci. Lett.*, 179, 257–268, 2000.

Grace, J., Berninger, F., and Nagy, L.: Impacts of climate change on the tree line, *Ann. Bot.-London*, 90, 537–544, 2002.

Grimm, E. C., Maher Jr., L. J., and Nelson, D. M.: The magnitude of error in conventional bulk-sediment radiocarbon dates from central North America, *Quaternary Res.*, 72, 301–308, 2009.

Grudd, H., Briffa, K. R., Karlén, W., Bartholin, T. S., Jones, P. D., and Kromer, B.: A 7400-year tree-ring chronology in northern Swedish Lapland: natural climatic variability expressed on annual to millennial timescales, *Holocene*, 12, 657–665, 2002.

Guiot, J. and de Vernal, A.: Transfer functions: methods for quantitative paleoceanography based on microfossils, in: *Proxies in Late Cenozoic Paleocyanography*, edited by: Hillaire-Marcel, C. and de Vernal, A., Elsevier, 523–563, 2007.

Hald, M., Andersson, C., Ebbesen, H., Jansen, E., Klitgaard-Kristensen, D., Risebrobakken, B., Salomonsen, G. R., Sarnthein, M., Sejrup, H. P., and Telford, R. J.: Variations in temperature and extent of Atlantic Water in the northern North Atlantic during the Holocene, *Quaternary Sci. Rev.*, 26, 3423–3440, 2007.

Arctic Holocene proxy climate database

H. S. Sundqvist et al.

Title Page

Abstract

Introduction

Conclusions

References

Tables

Figures



Back

Close

Full Screen / Esc

Printer-friendly Version

Interactive Discussion



Hammarlund, D., Barnekow, L., Birks, H. J. B., Buckardt, B., and Edwards, T. W. D.: Holocene changes in atmospheric circulation recorded in the oxygen-isotope stratigraphy of lacustrine carbonates from northern Sweden, *Holocene*, 12, 339–351, 2002.

Hammarlund, D., Björck, S., Buchardt, B., Israelson, C., and Thomsen, C. T.: Rapid hydrological changes during the Holocene revealed by stable isotope records of lacustrine carbonates from Lake Igelsjön, southern Sweden, *Quaternary Sci. Rev.*, 22, 353–370, 2003.

Hammarlund, D., Velle, G., Wolfe, B. B., Edwards, T. W. D., Barnekow, L., Bergman, J., Holmgren, S., Lamme, S., Snowball, I., Wohlfarth, B., and Possnert, G.: Palaeolimnological and sedimentary responses to Holocene forest retreat in the Scandes Mountains, west-central Sweden, *Holocene*, 14, 862–876, 2004.

Harsch, M. A., Hulme, P. E., McGlone, M. S., and Duncan, R. P.: Are treelines advancing? A global meta-analysis of treeline response to climate warming, *Ecol. Lett.*, 12, 1040–1049, 2009.

Heikkilä, M., Edwards, T. W. D., Seppä, H., and Sonninen, E.: Sediment isotope tracers from Lake Saarikko, Finland, and implications for Holocene hydroclimatology, *Quaternary Sci. Rev.*, 29, 2146–2160, 2010.

Heikkilä, M. and Seppä, H.: A 11,000 yr palaeotemperature reconstruction from the southern boreal zone in Finland, *Quaternary Sci. Rev.*, 22, 541–554, 2003.

Helama, S., Lindholm, M., Timonen, M., Meriläinen, J., and Eronen, M.: The supra-long Scots pine tree-ring record for Finnish Lapland: Part 2, interannual to centennial variability in summer temperatures for 7500 years, *Holocene*, 12, 681–687, 2002.

Helama, S., Fauria, M., Mielikäinen, K., Timonen, M., and Eronen, M.: Sub-Milankovitch solar forcing of past climates: mid and late Holocene perspectives, *Geol. Soc. Am. Bull.*, 122, 1981–1988, 2010.

Helama, S., Seppä, H., Bjune, A. E., and Birks, H. J. B.: Fusing pollen-stratigraphic and dendroclimatic proxy data to reconstruct summer temperature variability during the past 7.5 ka in subarctic Fennoscandia, *J. Paleolimnol.*, 48, 272–286, 2012.

Hobbie, J. E.: Polar limnology, *Ecosystems of the World*, 23, 63–105, 1984.

Hu, F. S., Ito, E., Brubaker, L. B., and Anderson, P. M.: Ostracode geochemical record of Holocene climatic change and implications for vegetational response in the northwestern Alaska Range, *Quaternary Res.*, 49, 86–95, 1998.

Ilyashuk, E. A., Ilyashuk, B. P., Hammarlund, D., and Larocque, I.: Holocene climatic and environmental changes inferred from midge records (Diptera: Chironomidae, Chaoboridae,

Arctic Holocene proxy climate database

H. S. Sundqvist et al.

Title Page

Abstract

Introduction

Conclusions

References

Tables

Figures



Back

Close

Full Screen / Esc

Printer-friendly Version

Interactive Discussion



Ceratopogonidae) at Lake Berkut, southern Kola Peninsula, Russia, Holocene, 15, 897–914, 2005.

Irvine, F., Cwynar, L. C., Vermaire, J. C., and Rees, A. B. H.: Midge-inferred temperature reconstructions and vegetation change over the last ~15,000 years from Trout Lake, northern Yukon Territory, eastern Beringia, *J. Paleolimnol.*, 48, 133–146, 2012.

Jansen, E., Andersson, C., Moros, M., Nisancioglu, K. H., Nyland, B. F., and Telford, R. J.: The early to mid Holocene thermal optimum in the northern North Atlantic and Nordic Seas: the role of orbital forcing and Holocene century to millennial scale climate events, in: *Natural Climate Variability and Global Warming: a Holocene Perspective*, edited by: Batterbee, R. W. and Binnet, H. A., Blackwell Publishing Ltd., 123–137, 2008.

Jennings, A., Andrews, J., and Wilson, L.: Holocene environmental evolution of the SE Greenland Shelf North and South of the Denmark Strait: Irminger and East Greenland current interactions, *Quaternary Sci. Rev.*, 30, 980–998, 2011.

Jennings, A. E., Weiner, N. J., Helgadóttir, G., and Andrews, J. T.: Modern foraminiferal faunas of the SW to N Iceland shelf: Oceanographic and environmental controls, *J. Foramin. Res.*, 34, 180–207, 2004.

Jones, P. D., Briffa, K. R., Osborn, T. J., Lough, J. M., van Ommen, T. D., Vinther, B. M., Luterbacher, J., Wahl, E. R., Zwiers, F. W., Mann, M. E., Schmidt, G. A., Ammann, C. M., Buckley, B. M., Cobb, K. M., Esper, J., Goosse, H., Graham, N., Jansen, E., Kiefer, T., Kull, C., Küttel, M., Mosley-Thompson, E., Overpeck, J. T., Riedwyl, N., Schulz, M., Tudhope, A. W., Villalba, R., Wanner, H., Wolff, E., and Xoplaki, E.: High-resolution palaeoclimatology of the last millennium: A review of current status and future prospects, *Holocene*, 19, 3–49, 2009.

Jones, V. J., Leng, M. J., Solovieva, N., Sloane, H. J., and Tarasov, P.: Holocene climate of the Kola Peninsula; evidence from the oxygen isotope record of diatom silica, *Isotopes in Quaternary Paleoenvironmental reconstruction*, 23, 833–839, 2004.

Jonsson, C. E., Andersson, S., Rosqvist, G. C., and Leng, M. J.: Reconstructing past atmospheric circulation changes using oxygen isotopes in lake sediments from Sweden, *Clim. Past*, 6, 49–62, doi:10.5194/cp-6-49-2010, 2010.

Juggins, S. and Birks, H. J. B.: Quantitative environmental reconstructions from biological data, in: *Tracking Environmental Change Using Lake Sediments, Vol. 5: Data Handling and Numerical Techniques*, edited by: Birks, H. J. B., Lotter, A. F., Juggins, S., and Smol, J. P., Springer, Dordrecht, 431–494, 2012.

Arctic Holocene proxy climate database

H. S. Sundqvist et al.

Title Page

Abstract

Introduction

Conclusions

References

Tables

Figures



Back

Close

Full Screen / Esc

Printer-friendly Version

Interactive Discussion



Justwan, A., Koç, N., and Jennings, A. E.: Evolution of the Irminger and East Icelandic Current systems through the Holocene, revealed by diatom-based sea surface temperature reconstructions, *Quaternary Sci. Rev.*, 27, 1571–1582, 2008.

Kaplan, M. R., Wolfe, A. P., and Miller, G. H.: Holocene Environmental Variability in Southern Greenland Inferred from Lake Sediments, *Quaternary Res.*, 58, 149–159, 2002.

Kaufman, D. S.: A new synthesis of Arctic Holocene proxy climate records, Abstract PP31A-1832 presented at 2011 Fall Meeting, AGU, San Francisco, California, 5–9 December, 2011.

Kaufman, D. S., Ager, T. A., Anderson, N. J., Anderson, P. M., Andrews, J. T., Bartelein, P. J., Burbaker, L. B., Coats, L. L., Cwynar, L. C., Duval, M. L., Dyke, A. S., Edwards, M. E., Eiser, W. R., Gajewski, K., Geisodottir, A., Hu, F. S., Jennings, A. E., Kaplan, M. R., Kewin, M. W., Lozhkin, A. V., MacDonald, G. M., Miller, G. H., Mock, C. J., Oswald, W. W., Otto-Blisner, B. L., Porinchu, D. F., Rühland, K., Smol, J. P., Steig, E. J., and Wolfe, B. B.: Holocene thermal maximum in the western Arctic (0–180° W), *Quaternary Sci. Rev.*, 23, 529–560, 2004.

Kaufman, D. S., Axford, Y., Anderson, R. S., Lamoureaux, S. F., Schindler, D. E., Walker, I. R., and Werner, A.: A multi-proxy record of the Last Glacial Maximum and last 14,500 years of paleoenvironmental change at Lone Spruce Pond, southwestern Alaska, *J. Paleolimnol.*, 48, 9–26, 2012.

Kerwin, M. W., Overpeck, J. T., Webb, R. S., Anderson, K. H.: Pollen-based summer temperature reconstructions for the eastern Canadian boreal forest, subarctic, and Arctic, *Quaternary Sci. Rev.*, 23, 1901–1924, 2004.

Kheshgi, H. S. and Lapenis, A. G.: Estimating the accuracy of Russian palaeotemperature reconstructions, *Palaeogeogr. Palaeoecol.*, 121, 221–237, 1996.

Klitgaard-Kristensen, D., Sejrup, H. P., and Hafliðason, H.: The last 18 kyr fluctuations in Norwegian sea surface conditions and implications for the magnitude of climatic change: Evidence from the North Sea, *Paleoceanography*, 16, 455–467, 2001.

Koç, N., Jansen, E., and Hafliðason, H.: Paleoceanographic reconstructions of surface ocean conditions in the Greenland, Iceland and Norwegian Seas through the last 14 ka based on diatoms, *Quaternary Sci. Rev.*, 12, 115–140, 1993.

Koerner, R. M.: Mass balance of glaciers in the Queen Elizabeth Islands, Nunavut, Canada, *Ann. Glaciol.*, 42, 417–423, 2005.

Korhola, A., Vasko, K., Toivonen, H. T. T., and Olander, H.: Holocene temperature changes in northern Fennoscandia reconstructed from chironomids using Bayesian modelling, *Quaternary Sci. Rev.*, 21, 1841–1860, 2002.

**Arctic Holocene
proxy climate
database**

H. S. Sundqvist et al.

[Title Page](#)[Abstract](#)[Introduction](#)[Conclusions](#)[References](#)[Tables](#)[Figures](#)[Back](#)[Close](#)[Full Screen / Esc](#)[Printer-friendly Version](#)[Interactive Discussion](#)

- Korhola, A., Weckström, J., Holmström, L., and Erästö, P.: A quantitative Holocene climatic record from diatoms in northern Fennoscandia, *Quaternary Res.*, 54, 284–294, 2000.
- Kucera, M., Weinelt, M., Kiefer, T., Pflaumann, U., Hayes, A., Weinelt, M., Chen, M.-T., Mix, A. C., Barrows, T. T., Cortijo, E., Duprat, J., Juggins, S., and Waelbroeck, C.: Reconstruction of sea-surface temperatures from assemblages of planktonic foraminifera: Multi-technique approach based on geographically constrained calibration datasets and its application to glacial Atlantic and Pacific Oceans, *Quaternary Sci. Rev.*, 24, 951–998, 2005.
- Kucera, M.: Foraminifera as Tracers of Past Oceanic Environments, *Developments in Mar. Geol.*, Elsevier, 213–260, 2007.
- Kuoppamaa, M., Huusko, A., and Hicks, S.: *Pinus* and *Betula* pollen accumulation rates from the northern boreal forest as a record of interannual variation in July temperature, *J. Quaternary Sci.*, 24, 513–521, 2009.
- Larocque, I. and Bigler, C.: Similarities and discrepancies between chironomid- and diatom-inferred temperature reconstructions through the Holocene at Lake 850, northern Sweden, *High resolution lake sediment records in climate and Environment variability studies: European lake drilling program*, 122, 109–121, 2004.
- Larsen, D. J., Miller, G. H., Geirsdóttir, Á., and Ólafsdóttir, S.: Non-linear Holocene climate evolution in the North Atlantic: a high-resolution, multi-proxy record of glacier activity and environmental change from Hvítárvatn, central Iceland, *Quaternary Sci. Rev.*, 39, 14–25, 2012.
- Lauritzen, S.-E. and Lundberg, J.: Calibration of the speleothem delta function: an absolute temperature record for the Holocene in northern Norway, *Holocene*, 9, 659–669, 1999.
- Ledu, D. Rochon, A., de Vernal, A., and St-Onge, G.: Holocene sea-ice history and climate variability along the main axis of the Northwest Passage, *Can. Arctic Paleoceanogr.*, 25, PA2213, doi:10.1029/2009PA001817, 2010.
- Leng, M. J. and Marshall, J. D.: Palaeoclimate interpretation of stable isotope data from lake sediment archives, *Quaternary Sci. Rev.*, 23, 811–831, 2004.
- Levac, E.: High resolution Holocene palynological record from the Scotian Shelf, *Mar. Micropaleontol.*, 43, 179–197, 2001.
- Levac, E., de Vernal, A., and Blake Jr., W.: Holocene paleoceanography of the northernmost Baffin Bay: palynological evidence, *J. Quaternary Sci.*, 16, 353–363, 2001.
- Levy, L. B., Kaufman, D. S., and Werner, A.: Holocene glacier fluctuations, Waskey Lake, north-eastern Ahklun Mountains, southwestern Alaska, *Holocene*, 14, 185–193, 2004.

Arctic Holocene proxy climate database

H. S. Sundqvist et al.

Title Page

Abstract

Introduction

Conclusions

References

Tables

Figures



Back

Close

Full Screen / Esc

Printer-friendly Version

Interactive Discussion

- Linderholm, H. W., Björklund, J. A., Seftigen, K., Gunnarson, B. E., Grudd, H., Jeong, J.-H., Drobyshev, I., and Liu, Y.: Dendroclimatology in Fennoscandia – from past accomplishments to future potential, *Clim. Past*, 6, 93–114, doi:10.5194/cp-6-93-2010, 2010.
- 5 Linge, H., Lauritzen, S.-E., Andersson, C., Hansen, J. K., Skoglund, R. Ø., and Sundqvist, H. S.: Stable isotope records for the last 10 000 years from Okshola cave (Fauske, northern Norway) and regional comparisons, *Clim. Past*, 5, 667–682, doi:10.5194/cp-5-667-2009, 2009.
- Lloyd, J. M., Kuijpers, A., Long, A., Moros, M., and Park, L. A.: Foraminiferal reconstruction of mid- to late-Holocene ocean circulation and climate variability in Disko Bugt, West Greenland, *Holocene*, 17, 1079–1091, 2007.
- 10 Lohmann, G., Pfeiffer, M., Laepple, T., Leduc, G., and Kim, J.-H.: A model-data comparison of the Holocene global sea surface temperature evolution, *Clim. Past*, 9, 1807–1839, doi:10.5194/cp-9-1807-2013, 2013.
- MacDonald, G. M.: Postglacial vegetation history of the Mackenzie River Basin, *Quaternary Res.*, 28, 245–262, 1987.
- 15 MacDonald, G. M., Edwards, T. W. D., Moser, K. A., Pienitz, R., and Smol, J. P.: Rapid response of treeline vegetation and lakes to past climate warming, *Nature*, 361, 243–246, 1993.
- MacDonald, G. M., Porinchu, D. F., Rolland, N., Kremetsky, K. V., and Kaufman, D. S.: Paleolimnological evidence of the response of the central Canadian treeline zone to radiative forcing and hemispheric patterns of temperature change over the past 2000 years, *J. Paleolimnol.*, 41, 129–141, 2009.
- 20 Mann, D. H., Heiser, P. A., and Finney, B. P.: Holocene history of the Great Kobuk sand dunes, northwestern Alaska, *Quaternary Sci. Rev.*, 21, 709–731, 2002.
- Marchal, O., Cacho, I., Stocker, T. F., Grimalt, J. O., Calvo, E., Martrat, B., Shackleton, N., Vautravers, M., Cortijo, E., van Kreveld, S., Andersson, C., Koç, N., Chapman, M., Saffi, L., Duplessy, J.-C., Sarnthein, M., Turon, J.-L., Duprat, J., and Jansen, E.: Apparent long-term cooling of the sea surface in the northeast Atlantic and Mediterranean during the Holocene, *Quaternary Sci. Rev.*, 21, 455–483, 2002.
- 25 Marcott, S. A., Shakun, J. D., Clark, P. U., and Mix, A. C.: A reconstruction of regional and global temperature for the past 11,300 years, *Science*, 339, 1198–1201, 2013.
- McDermot, F.: Palaeo-climate reconstruction from stable isotope variations in speleothems: a review, *Quaternary Sci. Rev.*, 23, 901–918, 2004.

Arctic Holocene proxy climate database

H. S. Sundqvist et al.

Title Page

Abstract

Introduction

Conclusions

References

Tables

Figures

◀

▶

◀

▶

Back

Close

Full Screen / Esc

Printer-friendly Version

Interactive Discussion



McDermot, F. M., Atkinson, T. C., Fairchild, I. J., Baldini, L. M., and Matthey, D. P.: A first evaluation of the spatial gradients in $\delta^{18}\text{O}$ recorded by European Holocene speleothems, *Global Planet. Change*, 79, 275–287, 2010.

McKay, N. and Kaufman, D.: Holocene climate and glacier variability at Hallet and Greyling Lakes, Chugach Mountains, south-central Alaska, *J. Paleolimnol.*, 41, 143–159, 2009.

McKay, J. L., de Vernal, A., Hillaire-Marcel, C., Not, C., Polyak, L., and Darby, D.: Holocene fluctuations in Arctic sea-ice cover: Dinocyst-based reconstructions for the eastern Chukchi Sea, *Can. J. Earth Sci.*, 45, 1377–1397, 2008.

McKay, N., Ault, T. R., and St. George, S.: Improving access to the global paleoclimate dataset through the development of a virtual paleoclimate laboratory in R (vpIR), 2nd International Climate Informatics Workshop, Boulder, Colorado, 2012.

Michelutti, N., Wolfe, A. P., Vinebrooke, R. D., Rivard, B., and Briner, J. B.: Recent primary production increases in arctic lakes, *Geophys. Res. Lett.*, 32, L19715, doi:10.1029/2005GL023693, 2005.

Michelutti, N., Blais, J. M., Cumming, B. F., Paterson, A. M., Rühland, K., Wolfe, A. P., and Smol, J. P.: Do spectrally inferred determinations of chlorophyll *a* reflect trends in lake trophic status?, *J. Paleolimnol.*, 43, 205–217, 2010.

Miller, G. H., Wolfe, A. P., Briner, J. P., Sauer, P. E., and Nesje, A.: Holocene glaciation and climate evolution of Baffin Island, Arctic Canada, *Quaternary Land-Ocean Correl.*, 24, 1703–1721, 2005.

Müller, J., Werner, K., Stein, R., Fahl, K., Moros, M., and Jansen, E.: Holocene cooling culminates in sea ice oscillations in Fram Strait, *Quaternary Sci. Rev.*, 47, 1–14, 2012.

Nesje, A. and Matthews, J. A.: The Briksdalsbre Event: A winter precipitation-induced decadal-scale glacial advance in southern Norway in the ad 1990s and its implications, *Holocene*, 22, 249–261, 2012.

Nesje, A., Matthews, J. A., Dahl, S. O., Berrisford, M. S., and Andersson, C.: Holocene glacier fluctuations of Flatebreen and winter-precipitation changes in the Jostedalbreen region, western Norway, based on glaciolacustrine sediment records, *Holocene*, 11, 267–280, 2001.

Ojala, A. E. K., Alenius, T., Seppä, H., and Giesecke, T.: Integrated varve and pollen-based temperature reconstruction from Finland: evidence for Holocene seasonal temperature patterns at high latitudes, *Holocene*, 18, 529–538, 2008.

Arctic Holocene proxy climate database

H. S. Sundqvist et al.

Title Page

Abstract

Introduction

Conclusions

References

Tables

Figures



Back

Close

Full Screen / Esc

Printer-friendly Version

Interactive Discussion



Ólafsdóttir, S., Jennings, A. E., Geirsdóttir, Á., Andrews, J., and Miller, G. H.: Holocene variability of the North Atlantic Irminger current on the south- and northwest shelf of Iceland, *Mar. Micropaleontol.*, 77, 101–118, 2010.

Olsen, J., Björck, S., Leng, M. J., Gudmundsdottir, E. R., Odgaard, B. V., Lutz, C. M., Kendrick, C. P., Andersen, T. J., and Seidenkrantz, M.-S.: Lacustrine evidence of Holocene environmental change from three Faroese lakes: a multiproxy XRF and stable isotope study, *Quaternary Sci. Rev.*, 29, 2764–2780, 2010.

Overpeck, J. T., Meehl, G. A., Bondy, S., and Easterling, D. R.: Climate data challenges in the 21st century, *Science*, 331, 700–702, 2011.

Peros, M., Gajewski, K., Paull, T., Ravindra, R., and Podrifske, B.: Multi-proxy record of post-glacial environmental change, south-central Melville Island, Northwest Territories, Canada, *Quaternary Res.*, 73, 247–258, 2010.

Peros, M. C. and Gajewski, K.: Holocene climate and vegetation change on Victoria Island, western Canadian Arctic, *Quaternary Sci. Rev.*, 27, 235–249, 2008.

Perren, B., Anderson, N. J., Douglas, M. V., and Fritz, S.: The influence of temperature, moisture, and eolian activity on Holocene lake development in West Greenland, *J. Paleolimnol.*, 48, 223–239, 2012.

Pienitz, R., Smol, J. P., and MacDonald, G. M.: Paleolimnological reconstruction of Holocene climatic trends from two boreal treeline lakes, Northwest Territories, Canada, *Arct. Antarct. Alp. Res.*, 31, 82–93, 1999.

Risebrobakken, B., Jansen, E., Andersson, C., Mjelde, E., and Hevrøy, K.: A high-resolution study of Holocene paleoclimatic and paleoceanographic changes in the Nordic Seas, *Paleoceanography*, 18, 1017, doi:10.1029/2002PA000764, 2003.

Rosell-Melé, A. and McClymont, E.: Biomarkers as paleoceanographic proxies. *Developments in Mar. Geol.*, Elsevier, 441–490, 2007.

Rosén, P., Segerström, U., Eriksson, L., Renberg, I., and Birks, H. J. B.: Holocene climatic change reconstructed from diatoms, chironomids, pollen and near-infrared spectroscopy at an alpine lake (Sjuodjijaure) in northern Sweden, *Holocene*, 11, 551–562, 2001.

Rosenthal, Y.: Elemental Proxies for Reconstructing Cenozoic Seawater Paleotemperatures from Calcareous Fossils, *Developments in Mar. Geol.*, Elsevier, 765–797, 2007.

Rouillard, A., Rosén, P., Douglas, M. S. V., Pienitz, R., and Smol, J. P.: A model for inferring lake-water dissolved organic carbon (DOC) in lakewater from visible-near-infrared spectroscopy (VNIRS) measures in lake sediment, *J. Paleolimnol.*, 46, 187–202, 2011.

Arctic Holocene proxy climate database

H. S. Sundqvist et al.

Title Page

Abstract

Introduction

Conclusions

References

Tables

Figures

◀

▶

◀

▶

Back

Close

Full Screen / Esc

Printer-friendly Version

Interactive Discussion



- Rouillard, A., Michelutti, N., Douglas, M. S. V., and Smol, J. P.: Using paleolimnology to track Holocene climate fluctuations and aquatic ontogeny in poorly buffered High Arctic lakes, *Palaeogeogr. Palaeoecol.*, 321/322, 1–15, 2012.
- Rühland, K., Paterson, A. M., and Smol, J. P.: Hemispheric-scale patterns of climate-related shifts in planktonic diatoms from North American and European lakes, *Global Change Biol.*, 14, 2740–2754, 2008.
- Sagarin, R. and Micheli, F.: Climate Change in nontraditional data sets, *Science*, 26, p. 811, 2001.
- Salonen, J. S., Seppä, H., Väliranta, M., Jones, V. J., Self, A., Heikkilä, M., Kultti, S., and Yang, H.: The Holocene thermal maximum and late-Holocene cooling in the tundra of NE European Russia, *Quaternary Res.*, 75, 501–511, 2011.
- Sarmaja-Korjonen, K. and Seppä, H.: Abrupt and consistent responses of aquatic and terrestrial ecosystems to the 8200 cal. yr cold event: a lacustrine record from Lake Arapisto, Finland, *Holocene*, 17, 457–467, 2007.
- Sarnthein, M., Van Kreveld, S., Erlenkeuser, H., Grootes, P. M., Kucera, M., Pflaumann, U., and Schulz, M.: Centennial-to-millennial-scale periodicities of Holocene climate and sediment injections off the western Barents shelf, 75° N, *Boreas*, 32, 447–461, 2003.
- Sawada, M., Gajewski, K., de Vernal, A., and Richard, P.: Comparison of marine and terrestrial Holocene climate reconstructions from northeastern North America, *Holocene*, 9, 267–277, 1999.
- Schiff, C. J., Kaufman, D. S., Wallace, K. L., Werner, Al., and Ku, T. L.: Modeled tephra ages from lake sediments, base of Redoubt Volcano, Alaska, *Quat. Geochronol.*, 3, 56–67, 2008.
- Schiff, C. J., Kaufman, D. S., Wolfe, A., Dodd, J., and Sharp, Z.: Late Holocene storm-trajectory changes inferred from the oxygen isotope composition of lake diatoms, south Alaska, *J. Paleolimnol.*, 41, 189–208, 2009.
- Schmidt, S., Wagner, B., Heiri, O., Klug, M., Bennike, O. L. E., and Melles, M.: Chironomids as indicators of the Holocene climatic and environmental history of two lakes in Northeast Greenland. *Boreas* 40, 116–130, 2011.
- Seidenkrantz, M.-S.: Benthic foraminifera as palaeo sea-ice indicators in the subarctic realm examples from the Labrador Sea/Baffin Bay region, *Quaternary Sci. Rev.*, 79, 135–144, 2013.

Arctic Holocene proxy climate database

H. S. Sundqvist et al.

Title Page

Abstract

Introduction

Conclusions

References

Tables

Figures



Back

Close

Full Screen / Esc

Printer-friendly Version

Interactive Discussion



- Sejrup, H. P., Birks, H. J. B., Klitgaard Kristensen, D., and Madsen, H.: Benthonic foraminiferal distributions and quantitative transfer functions for the northwest European continental margin, *Mar. Micropaleontol.*, 53, 197–226, 2004.
- Sejrup, H. P., Hafliðason, H., Hjelstuen, B. O., Nygård, A., Bryn, P., and Lien, R.: Pleistocene development of the SE Nordic Seas margin, *Mar. Geol.*, 213, 169–200, 2004.
- Seppä, H. and Birks, H. J. B.: July mean temperature and annual precipitation trends during the Holocene in the Fennoscandian tree-line area: pollen-based climate reconstructions, *Holocene*, 11, 527–539, 2001.
- Seppä, H. and Birks, H. J. B.: Holocene Climate Reconstructions from the Fennoscandian Tree-Line Area Based on Pollen Data from Toskaljävri, *Quaternary Res.*, 57, 191–199, 2002.
- Seppä, H. and Poska, A.: Holocene annual mean temperature changes in Estonia and their relationship to solar insolation and atmospheric circulation patterns, *Quaternary Res.*, 61, 22–31, 2004.
- Seppä, H., MacDonald, G. M., Birks, H. J. B., Gervais, B. R., and Snyder, J. A.: Late-Quaternary summer temperature changes in the northern-European tree-line region, *Quaternary Res.*, 69, 404–412, 2008.
- Seppä, H., Nyman, M., Korhola, A., and Weckström, J.: Changes of treelines and alpine vegetation in relation to post-glacial climate dynamics in northern Fennoscandia based on pollen and chironomid records, *J. Quaternary Sci.*, 17, 287–301, 2002.
- Shemesh, A., Rosqvist, G., Rietti-Shati, M., Rubensdotter, L., Bigler, C., Yam, R., and Karlén, W.: Holocene climatic change in Swedish Lapland inferred from an oxygen-isotope record of lacustrine biogenic silica, *Holocene*, 11, 447–454, 2001.
- Smith, L. M., Andrews, J. T., Castañeda, I. S., Kristjánsdóttir, G. B., Jennings, A. E., and Sveinbjörnsdóttir, Á. E.: Temperature reconstructions for SW and N Iceland waters over the last 10 cal ka based on $\delta^{18}\text{O}$ records from planktic and benthic Foraminifera, *Quaternary Land-ocean Correlation*, 24, 1723–1740, 2005.
- Smol, J. P.: Paleoclimate proxy data from freshwater arctic diatoms, *Verh. Internat. Verin. Limnol.*, 23, 837–844, 1988.
- Smol, J. P. and Douglas, M. S. V.: From controversy to consensus: making the case for recent climatic change in the Arctic using lake sediments, *Front. Ecol. Environ.*, 5, 466–474, 2007.
- Smol, J. P., Wolfe, A. P., Birks, H. J. B., Douglas, M. S. V., Jones, V. J., Korhola, A., Pienitz, R., Rühland, K., Sanna Sorvari, S., Antoniades, D., Brooks, S. J., Fallu, M. A., Hughes, M., Keatley, B. E., Laing, T. E., Michelutti, N., Nazarova, L., Nyman, M., Paterson, A. M., Perren,

Arctic Holocene proxy climate database

H. S. Sundqvist et al.

Title Page

Abstract

Introduction

Conclusions

References

Tables

Figures



Back

Close

Full Screen / Esc

Printer-friendly Version

Interactive Discussion



B., Quinlan, R., Rautio, M., Saulnier-Talbot, E., Siitonen, S., Solovieva, N., and Weckström, J.: Climate-driven regime shifts in the biological communities of arctic lakes, *P. Natl. Acad. Sci. USA*, 102, 4397–4402, 2005.

Solignac, S., Giraudeau, J., and de Vernal, A.: Holocene sea surface conditions in the western North Atlantic: spatial and temporal heterogeneities, *Paleoceanography*, 21, PA2004, doi:10.1029/2005PA001175, 2006.

Solovieva, N., Tarasov, P. E., and MacDonald, G.: Quantitative reconstruction of Holocene climate from the Chuna Lake pollen record, Kola Peninsula, northwest Russia, *Holocene*, 15, 141–148, 2005.

St. Amour, N. A., Hammarlund, D. A. N., Edwards, T. W. D., and Wolfe, B. B.: New insights into Holocene atmospheric circulation dynamics in central Scandinavia inferred from oxygen isotope records of lake-sediment cellulose, *Boreas*, 39, 770–782, 2010.

Sundqvist, H. S., Zhang, Q., Moberg, A., Holmgren, K., Körnich, H., Nilsson, J., and Brattström, G.: Climate change between the mid and late Holocene in northern high latitudes – Part 1: Survey of temperature and precipitation proxy data, *Clim. Past*, 6, 591–608, doi:10.5194/cp-6-591-2010, 2010.

Szeicz, J. M., MacDonald, G. M., and Duk-Rodkin, A.: Late Quaternary vegetation history of the central Mackenzie Mountains, Northwest Territories, Canada, *Palaeogeogr. Palaeoecol.*, 113, 351–371, 1995.

Thomas, E. K., Szymanski, J., and Briner, J. P.: Holocene alpine glaciation inferred from lacustrine sediments on northeastern Baffin Island, Arctic Canada, *J. Quaternary Sci.*, 25, 146–161, 2010.

Thornalley, D. J. R., Elderfield, H., and McCave, I. N.: Holocene oscillations in temperature and salinity of the surface subpolar North Atlantic, *Nature*, 457, 711–714, 2009.

Tillman, P. K., Holzkämper, S., Kuhry, P., Sannel, A. B. K., Loader, N. J., and Robertson, I.: Long-term climate variability in continental subarctic Canada: A 6200-year record derived from stable isotopes in peat, *Palaeogeogr. Palaeoecol.*, 298, 235–246, 2010.

Tingley, M. P., Craigmile, P. F., Haran, M., Li, B., Mannshardt, E., and Rajaratnam, B.: Piecing together the past: statistical insights into paleoclimatic reconstructions, *Quaternary Sci. Rev.*, 35, 1–22, 2012.

Vare, L. L., Massé, G., Gregory, T. R., Smart, C. W., and Belt, S. T.: Sea ice variations in the central Canadian Arctic Archipelago during the Holocene, *Quaternary Sci. Rev.*, 28, 1354–1366, 2009.

Arctic Holocene proxy climate database

H. S. Sundqvist et al.

Title Page

Abstract

Introduction

Conclusions

References

Tables

Figures



Back

Close

Full Screen / Esc

Printer-friendly Version

Interactive Discussion

- Vasskog, K., Paasche, Ø., Nesje, A., Boyle, J. F., and Birks, H. J. B.: A new approach for reconstructing glacier variability based on lake sediments recording input from more than one glacier, *Quaternary Res.*, 77, 192–204, 2012.
- Velle, G., Brooks, S. J., Birks, H. J. B., and Willassen, E.: Chironomids as a tool for inferring Holocene climate: an assessment based on six sites in southern Scandinavia, *Quaternary Sci. Rev.*, 24, 1429–1462, 2005.
- Viau, A. E. and Gajewski, K.: Reconstructing Millennial-Scale, Regional Paleoclimates of Boreal Canada during the Holocene, *J. Climate*, 22, 316–330, 2009.
- Vinther, B. M., Andersen, K. K., Jones, P. D., Briffa, K. R., and Cappelen, J.: Extending Greenland temperature records into the late eighteenth century, *J. Geophys. Res.*, 111, D11105, doi:10.1029/2005JD006810, 2006.
- Vinther, B. M., Buchardt, S. L., Clausen, H. B., Dahl-Jensen, D., Johnsen, S. J., Fisher, D. A., Koerner, R. M., Raynaud, D., Lipenkov, V., Andersen, K. K., Blunier, T., Rasmussen, S. O., Steffensen, J. P., and Svensson, A. M.: Holocene thinning of the Greenland ice sheet, *Nature*, 461, 385–388, 2009.
- Vinther, B. M., Dahl-Jensen, D., Johnsen, S. J., Jones, P., Briffa, K. R., Clausen, H. B., and Andersen, K. K.: Climatic signals in multiple highly resolved stable isotope records from Greenland, *Quaternary Sci. Rev.*, 29, 522–538, 2010.
- von Storch, H., Zorita, E., Jones, J. M., Dimitriev, Y., González-Rouco, F., Tett, S. F. B.: Reconstructing past climate from noisy data, *Science*, 306, 679–682, 2004.
- Voronina, E., Polyak, L., de Vernal, A., and Peyron, O.: Holocene variations of sea-surface conditions in the southeastern Barents Sea, reconstructed from dinoflagellate cyst assemblages, *J. Quaternary Sci.*, 16, 717–727, 2001.
- Vorren, K.-D., Blaauw, M., Wastegård, S., Plicht, J. V. D., and Jensen, C.: High-resolution stratigraphy of the northernmost concentric raised bog in Europe: Sellevollmyra, Andøya, northern Norway, *Boreas*, 36, 253–277, 2007.
- Vorren, K.-D., Jensen, C. E., and Nilssen, E.: Climate changes during the last c. 7500 years as recorded by the degree of peat humification in the Lofoten region, Norway, *Boreas*, 41, 13–30, 2012.
- Walker, I. R.: Midges: Chironomidae and related Diptera, in: *Tracking Environmental Change Using Lake Sediments, Vol. 4: Zoological Indicators*, edited by: Smol, J. P., Birks, H. J. B., and Last, W. M., Kluwer Academic Publishers, Dordrecht, 43–66, 2001.

- Willemse, N. W. and Törnqvist, T. E.: Holocene century-scale temperature variability from West Greenland lake records, *Geology*, 27, 580–584, 1999.
- Wolfe, A. P., Miller, G. H., Olsen, C. A., Forman, S. L., Doran, P. T., and Holmgren, S. U.: Geochronology of high latitude lake sediments, in: Long-term Environmental Change in Arctic and Antarctic Lakes, edited by: Pienitz, R., Douglas, M. S. V., and Smol, J. P., 19–52, 2004.
- Wolfe, B. B., Edwards, T. W. D., Aravena, R., Forman, S. L., Warner, B. G., Velichko, A. A., and MacDonald, G. M.: Holocene Paleohydrology and Paleoclimate at Treeline, North-Central Russia, Inferred from Oxygen Isotope Records in Lake Sediment Cellulose, *Quaternary Res.*, 53, 319–329, 2000.
- Zabenskie, S. and Gajewski, K.: Post-Glacial climatic change on Boothia Peninsula, Nunavut, Canada, *Quaternary Res.*, 68, 261–270, 2007.

**Arctic Holocene
proxy climate
database**

H. S. Sundqvist et al.

[Title Page](#)[Abstract](#)[Introduction](#)[Conclusions](#)[References](#)[Tables](#)[Figures](#)[Back](#)[Close](#)[Full Screen / Esc](#)[Printer-friendly Version](#)[Interactive Discussion](#)

Arctic Holocene proxy climate database

H. S. Sundqvist et al.

Title Page

Abstract

Introduction

Conclusions

References

Tables

Figures



Back

Close

Full Screen / Esc

Printer-friendly Version

Interactive Discussion



Table 1. Sites with proxy records in the database. Some sites include more than one proxy record (see Table 2) (Notes: Site short name = title of tab in excel spreadsheet – database with proxy and geochronology data. Punctuation for list of proxy types connotes the following: a.b – a = general type of analysis and b = specific type of analysis or material (e.g. “d¹⁸O.foram” = oxygen-isotope analysis of foraminifera); a,b – a and b = different proxy types from the same physical sequenc; a; b – a and b = records from different physical sequences collected at the same site. Proxy type abbreviations as follows: BSi = biogenic-silica content; DBD = dry bulk density; MAR = mass accumulation rate; MS = magnetic susceptibility; N, C, S = nitrogen, carbon, sulfur; OM = organic-matter content; TOC = total organic carbon. Oldest and youngest ages are in calendar years before 1950 AD (yr BP). Chron score = geochronology accuracy score calculated using the formulas and weighting factors in Appendix A and the “¹⁴C material” type listed in the adjacent column).

Arctic Holocene proxy climate database

H. S. Sundqvist et al.

[Title Page](#)

[Abstract](#)

[Introduction](#)

[Conclusions](#)

[References](#)

[Tables](#)

[Figures](#)



[Back](#)

[Close](#)

[Full Screen / Esc](#)

[Printer-friendly Version](#)

[Interactive Discussion](#)

Site short name	Site	General location	Lat (°)	Lon (°)	Elev (m)	Source	Proxy	Oldest (yr BP)	Youngest (yr BP)	Resolution (yr)	¹⁴ C material	Chron-score	Citation
Alaska and Yukon													
andy	Andy Lake	Northwest Territory	64.65	-128.08	1360	lake	pollen	13192	0	236	1	-1.9	Viau and Gajewski (2009); Szeicz et al. (1995)
bells	Bell's Lake	Northwest Territory	65.02	-127.48	580	lake	pollen	13299	0	256	3	-1.6	Viau and Gajewski (2009); Szeicz et al. (1995)
candelabra	Candelabra Lake	Yukon	61.68	-130.65	1040	lake	pollen	12567	352	222	2	0.0	Viau and Gajewski (2009); Cwynar and Spear (1995)
dune farewell	Dune Lake Farewell Lake	Interior Alaska	64.42	-149.90	134	lake	d13C.bulk_organics	11326	-43	31	4	2.5	Finney et al. (2012)
		Interior Alaska	62.55	-153.63	230	lake	MgCa.ostracodes	12517	-50	242	3	0.9	Hu et al. (1998)
GGC19	GGC-19	Chukchi Sea	72.16	-155.51	-369	marine	d ¹⁸ O.forams; dinocysts; diatoms; dinocysts	6660	52	76	4	4.4	Farmer et al. (2011)
greyling	Greyling Lake	S Alaska	61.40	-145.70	1015	lake	OM	18127	-29	162	4	0.6	Mckay and Kaufman (2009)
hail	Hail Lake	Yukon	60.03	-129.02	690	lake	pollen	11334	67	136	4	1.2	Viau and Gajewski (2009); Cwynar (1995)
hallet	Hallet Lake	S Alaska	61.50	-146.20	1128	lake	OM; BSi	7913	-52	35	4	4.6	Mckay and Kaufman (2009)
HLV0501	HLV0501-05	Chukchi Sea	72.69	-157.52	-415	marine	dinocysts	8209	225	116	2	1.3	de Vernal et al. (2013)
honeymoon	Honeymoon Pond	Yukon	64.63	-138.40	1160	lake	pollen	10795	17	154	2	-0.4	Viau and Gajewski (2009); Cwynar and Spear (1991)
hudson	Hudson Lake	S Alaska	61.90	-145.67	657	lake	chironomids	9574	-28	117	4	3.3	Clegg et al. (2011)
jellybean	Jellybean Lake	Yukon	60.35	-134.80	730	lake	d ¹⁸ O.calcite	7556	-52	22	4	4.0	Anderson et al. (2005)
kusawa	Kusawa Lake	SW Yukon	60.28	-136.18	671	lake	BSi	12298	77	87	4	1.6	Chakraborty et al. (2010)
lily	Lily Lake	Alaska	59.20	-135.40	230	lake	pollen	12740	54	208	1	-1.3	Cwynar (1990)
logan	Mt Logan	Yukon	60.58	-140.50	5300	ice	d ¹⁸ O.ice	12950	-40	10	NA	NA	Fisher et al. (2008)
lonespruce	Lone Spruce Pond	SW Alaska	60.01	-159.14	135	lake	BSi	14524	-5	40	4	3.4	Kaufman et al. (2012)
meleze	Lac Meleze	Northwest Territory	65.22	-126.12	650	lake	pollen	13699	-32	299	1	-3.1	Viau and Gajewski (2009); MacDonald (1987)
mica	Mica Lake	S Alaska	60.95	-148.15	3	lake	d ¹⁸ O.diatom	9504	-44	212	4	3.3	Schiff et al. (2009)
moose	Moose Lake	S Alaska	61.37	-143.60	437	lake	chironomids	6008	-20	47	4	3.7	Clegg et al. (2010)
P1B3	P1/B3	Chukchi Sea	73.68	-162.66	-201	marine	dinocysts; dinocysts	9626	126	145	2	0.7	de Vernal et al. (2005)
quartz	Quartz Lake	Interior Alaska	64.21	-145.81	293	lake	chironomids	10949	777	212	3	1.5	Wooller et al. (2012)
rainbow	Rainbow Lake	S Alaska	60.72	-150.80	63	lake	chironomids	13506	-54	301	4	2.6	Clegg et al. (2011)
ranger	Ranger Lake	Alaska	67.15	-153.65	820	lake	pollen	35525	0	369	1	-1.1	Viau and Gajewski (2009); Brubaker et al. (1983)
screaminglynx	Screaming Lynx Lake	Alaska	66.07	-145.40	223	lake	chironomids	10611	-43	72	4	2.3	Clegg et al. (2011)
takahula	Takahula Lake	Alaska	67.35	-153.67	275	lake	d ¹⁸ O.calcite	8132	-51	65	4	2.9	Clegg and Hu (2010)
trout	Trout Lake	N Yukon	68.83	-138.75	150	lake	chironomids; chironomids	15425	1784	207	3	-0.6	Irvine et al. (2012)
upper_fly	Upper Fly Lake	S Yukon	61.07	-138.09	1326	lake	pollen	13417	0	206	4	-0.3	Bunbury and Gajewski (2009)
waskey	Waskey Lake	SW Alaska	59.88	-159.21	150	lake	DBD, OM	10979	71	85	4	0.5	Levy et al. (2004)
wolverine	Wolverine Lake	N Alaska	67.10	-158.91	146	lake	MAR	7407	24	33	4	0.4	Mann et al. (2002)
	Core												
Canadian islands and Greenland													
agassiz	Agassiz	Greenland	80.70	-73.10	1730	ice	d ¹⁸ O.ice; ice.melt	11640	0	20	NA	NA	Vinther et al. (2009)
akvaquak	Akvaquak Lake	Baffin Island	66.78	-63.95	17	lake	pollen	8334	10	194	3	0.1	Fréchette and de Vernal (2009)
ARC3	ARC-3	Barrow Strait	74.27	-91.11	-347	marine	IP25	10021	439	16	2	0.3	Vare (2009); Belt et al. (2010)
BC01	BC01	Melville Peninsula	75.18	-111.92	lake	OM, MS; BSi	12943	-66	61	3	-2.1	Peros et al. (2010)	
big_round	Big Round Lake	Baffin Island	69.87	-68.86	lake	MS	10186	-56	16	4	2.9	Thomas et al. (2010)	
braya_so	Braya So	Kangerlussuaq	67.00	-50.70	170	lake	alkenones	6119	-55	44	2	1.5	D'andrea et al. (2011)
century	Camp Century	Greenland	77.17	-61.13	1890	ice	d ¹⁸ O.ice	11650	-10	20	NA	NA	Vinther et al. (2009)
DA05	DA05	Kangersuneq fjord	68.72	-51.11	-335	marine	forams	6883	1063	88	4	3.2	Lloyd (2007)
devon	Devon Ice Cap	Nunavut	75.32	-82.50	lake	ice	d ¹⁸ O.ice	20539	39	50	NA	NA	Fisher et al. (1983, updated by author)



Table 1. Continued.

Dye3	Dye-3	Greenland	65.18	-43.82	ice	d ¹⁸ O _{ice}	11640	-20	20	NA	NA	Vinther et al. (2006)
flower_valley	Flower Valley Lake	S Greenland	65.61	-37.69	73 lake	dD	8560	308	359	4	3.2	Balascio et al. (2013)
GISP2	GISP2	Greenland	72.58	-38.46	3216 ice	d ¹⁸ O _{ice}	49981	95	31	NA	NA	Alley (2000)
GRIP	GRIP	Greenland	72.01	-37.63	3230 ice	d ¹⁸ O _{ice}	32380	-20	20	NA	NA	Vinther et al. (2006)
hjort	Hjort Lake	Sore Koldewey	76.43	-18.77	114 lake	chironomids	9773	488	300	3	-0.8	Schmidt et al. (2011)
HJ84	HJ84-039-021	SW of Greenland	58.37	-57.51	-2853 marine	dinocysts	8297	1968	158	4	-2.5	de Vernal et al. (2011, 2013)
HJ90	HJ90-013-017	SW of Greenland	58.19	-56.27	-325 marine	dinocysts	11919	1362	132	3	1.1	de Vernal et al. (2013)
HU91	HU91-039-008 PC	Baffin Bay	77.27	-74.33	-663 marine	dinocysts	6756	1549	130	3	2.0	Lévesc et al. (2001); de Vernal et al. (2013)
Igaliku	Igaliku Lake	Southern Greenland	61.00	-45.43	30 lake	pollen.flux	9527	-51	117	4	3.2	Massac et al. (2012)
Iglutalik	Iglutalik Lake	Nunavut	66.14	-66.08	90 lake	pollen	10269	-24	177	1	-2.0	Kenwin et al. (2004); Davis (1980)
jake	Jake Lake	Nunavut	63.67	-65.15	300 lake	pollen	8082	-41	312	2	-1.2	Kenwin et al. (2004); Miller et al. (2005)
L2004-804	L2004-804-009	SW of Greenland	74.15	-81.20	-781 marine	dinocysts	2038	157	NA	NA	NA	Ledu et al. (2010); de Vernal et al. (2013)
MD99-2227	MD99-2227	SW of Greenland	58.21	-48.37	-3460 marine	dinocysts	11832	753	129	4	3.7	de Vernal and Hillaire-Marcel (2006); de Vernal et al. (2013)
nauj1	NAUJ1-1	W Greenland	66.67	-51.97	300 lake	mineral.content	9498	429	13	4	0.9	Willeme and Thornqvist (1999)
NGRIP	NGRIP	Greenland	75.10	-42.32	2917 ice	d ¹⁸ O _{ice}	41700	-40	20	NA	NA	Vinther et al. (2006); NorthGRIP members (2004)
north	North Lake	W Greenland	69.24	-50.03	190 lake	OM; BSi; chironomids	7271	-52	72	4	4.1	Axford et al. (2013)
penny	Penny Ice Cap	Baffin Island	67.25	-66.75	1900 ice	d ¹⁸ O _{ice} ; d ¹⁸ O _{ice}	11787	-33	10	NA	NA	Fisher et al. (1998)
opisrisargo	Opisrisargo Lake	S Greenland	61.00	-47.75	7 lake	pollen; BSi	8634	8	176	2	0.5	Frechette and de Vernal (2009); Kaplan et al. (2002)
renland	Renland	Greenland	71.30	-26.70	2350 ice	d ¹⁸ O	59390	-10	63	NA	NA	Vinther et al. (2009)
sfl4-1	SFL-1	W Greenland	67.08	-50.28	247 lake	OM	7400	12	12	1	-0.8	Willeme and Thornqvist (1999)
SPO2	SPO2	Melville Peninsula	68.55	-83.29	220 lake	OM; MS	8080	-53	77	4	2.4	Adams and Finkelstein (2010)
SS1381	SS1381	W Greenland	67.01	-51.10	196 lake	OM.flux; mineral.flux	8429	46	48	1	-0.3	Anderson et al. (2012)
SS16	SS16	W Greenland	66.91	-50.46	477 lake	diatoms	8328	-50	69	2	1.1	Perren et al. (2012)
SS49	SS49	W Greenland	66.95	-52.64	300 lake	diatoms	9534	176	56	2	0.8	Perren et al. (2012)
SS8	SS8	W Greenland	67.01	-51.07	188 lake	mineral.flux; OM.flux	8761	1856	56	2	1.7	Anderson et al. (2012)
Fennoscandia												
arapisto	Arapisto	S Finland	60.58	24.80	133 lake	pollen	8889	0	110	3	1.3	Sarmaja-Korjonen and Seppä (2007)
austerkjosen	Austerkjosen	Norland	68.53	17.27	135 lake	pollen	8839	19	294	1	-2.8	Seppä et al. (2009)
berkut	Berkut	Kola Peninsula	64.43	36.67	25 lake	chironomids	10118	235	31	0	NA	Ilyashuk et al. (2005)
bjornfjellhorn	Bjornfjellhorn	N Norway	68.43	18.07	510 lake	pollen	8860	-45	182	1	-1.5	Seppä et al. (2009); Brooks (2006)
bruskardstjorni	Bruskardstjorni	S Norway	61.42	8.67	1309 lake	chironomids	10900	-27	182	1	-1.5	Velle et al. (2005)
chuna	Chuna Lake	Kola Peninsula	67.95	32.48	475 lake	d ¹⁸ O; diatoms; pollen	9300	10	63	3	0.8	Jones et al. (2004); Solovieva et al. (2005)
dalene	Dalene	S Norway	58.25	8.00	40 lake	pollen	8940	-57	184	1	-1.6	Eide et al. (2006); Seppä et al. (2009)
dalmuldsdoo	Dalmuldsdoo	N Norway	69.17	20.72	355 lake	pollen	10514	0	143	3	1.7	Bjune et al. (2005)
dravladalsvatn	Dravladalsvatn	Folgefonna	60.03	6.07	4 lake	DBD	11532	-51	56	2	-1.6	Bakke et al. (2005)
fauske	Fauske	N Norway	67.22	15.81	160 speleothem	d ¹⁸ O	7515	-47	26	NA	NA	Linge et al. (2009)
fiskebolvatnet	Fiskebolvatnet	NW Norway	68.41	14.80	23 lake	mass.flux	9495	381	27	3	2.2	Balascio and Bradley (2012)
flarken	Flarken	S Sweden	58.55	13.67	108 lake	pollen	8982	-50	100	2	0.5	Seppä et al. (2009)
flotatjorn	Flotatjorn	S Norway	59.67	7.55	890 lake	pollen	9021	-44	216	1	-1.8	Seppä et al. (2005)
gammelheimvatnet	Gammelheimvatnet	N Norway	68.47	17.75	290 lake	pollen	8968	-42	123	1	-1.5	Seppä et al. (2009)
gilltjarnen	Gilltjarnen	S Sweden	60.08	15.83	172 lake	chironomids; pollen	10707	-50	109	1	-0.8	Antonsen et al. (2006)
gloppsjon	Gloppsjon	S Sweden	59.83	16.53	198 lake	pollen	8972	0	125	1	-0.1	Seppä et al. (2009)
grostjorn	Grostjorn	S Norway	58.53	7.73	180 lake	pollen	8914	-47	160	1	-1.8	Eide et al. (2006); Seppä et al. (2009)
gunnarsofjorden	Over Gunnarsofjorden	N Norway	71.04	28.17	78 lake	pollen	9124	-40	89	3	2.0	Allen et al. (2007)
haugtjorn	Haugtjorn	S Norway	60.38	10.88	320 lake	pollen	8938	-49	136	1	-0.9	Eide et al. (2006); Seppä et al. (2009)
holebudalen	Holebudalen	S Norway	59.83	6.98	1144 lake	pollen; chironomids	8929	-10	138	1	-2.0	Velle et al. (2005); Eide et al. (2006); Seppä et al. (2009)
igelsjon	Igelsjon	C Sweden	58.47	13.73	111 lake	d ¹⁸ O; calcite	11491	55	90	4	-0.7	Hammarlund et al. (2003)
isbentjorn	Isbentjorn	S Norway	59.77	7.43	787 lake	pollen	8890	-44	157	1	-2.0	Seppä et al. (2009)
jarburvatnet	Jarburvatnet	SW Norway	61.70	6.76	1001 lake	OM; MS	10749	0	26	3	2.0	Nesje et al. (2001)
kinnschaugen	Kinnschaugen	S Norway	62.02	10.37	591 lake	pollen	8629	-23	188	1	-3.2	Seppä et al. (2009)
kjennsvatn	Austre Kjennsvatnet	N Norway	68.00	14.26	527 lake	DBD	3030	-50	30	4	-4.2	Bakke et al. (2010)
klottjarnen	Klottjarnen	C Sweden	61.82	14.58	235 lake	pollen	8942	-48	87	3	1.6	Seppä et al. (2009)
kortlanda	Kortlandamossen1	C Sweden	59.85	12.29	112 peat	humification_index; humification_index	9759	226	45	4	1.0	Borgmark and Wastegård (2008)
KP2	KP2	Kola Peninsula	68.80	35.32	131 lake	pollen	8997	0	147	3	-0.5	Seppä et al. (2008); Seppä et al. (2009)
laihialampi	Laihialampi	S Finland	61.40	26.07	115 lake	pollen	8985	49	74	1	-1.7	Heikkilä and Seppä (2003)
lake850	lake850	N Sweden	68.37	19.12	850 lake	chironomids; diatoms; d ¹⁸ O; diatoms	9475	-50	79	4	2.3	Larouque and Bigler (2004); Shemesh et al. (2001)
lapland	Lapland	Lapland	69.00	25.00	tree	width	7450	-55	1	NA	NA	Helama et al. (2010)
litvatn	Litvatn	N Norway	68.52	14.87	106 lake	pollen	8780	-45	239	1	-1.4	Seppä et al. (2009)
myrvatn	Myrvatnet	N Norway	68.65	16.38	200 lake	pollen	8894	-42	190	1	-2.1	Seppä et al. (2009)
nattmålsvatn	Nattmålsvatn	SE Norway	69.18	17.39	170 lake	MS	10956	1101	23	3	3.0	Jantun et al. (2011)
nautajarvi	Nautajarvi	S Finland	61.80	24.70	104 lake	pollen	8998	51	37	NA	NA	Ojala et al. (2008); Seppä et al. (2009)
nerfioen	Nerfioen	W Norway	61.93	6.87	938 lake	multi-proxy PC score	7775	-20	50	3	2.6	Vasskog et al. (2012)
nykajajorn	Vulep Njakajaura	N Sweden	68.33	18.78	409 lake	diatoms	8855	111	219	3	2.5	Bigler et al. (2006); Barnekow et al. (1998)
njulla	Njulla	N Sweden	66.37	18.70	999 lake	diatoms; chironomids	9477	-48	139	3	-0.5	Bigler et al. (2005)
nykajamytjorn	Vestre Nykajamytjorn	SW Norway	59.82	6.00	570 lake	pollen; chironomids	11532	-51	147	3	1.2	Bjune et al. (2005); Velle et al. (2005)
raigastvere	Raigastvere	Estonia	58.58	26.65	53 lake	pollen	8923	0	100	1	0.0	Seppä and Poska (2004)
ratasjoen	Råtasjoen	S Norway	62.27	9.83	1169 lake	chironomids	10669	-49	158	3	1.3	Velle et al. (2005)
reiersdalvatnet	Reiersdalvatnet	S Norway	58.32	7.78	245 lake	pollen	8931	-82	109	1	-1.9	Seppä et al. (2009)
rystad	Rystad	Estonia	59.17	24.43	43 lake	pollen	10013	0	294	1	-1.1	Seppä and Poska (2004)
rystad1	Rystad1	N Norway	68.93	13.78	40 peat	humification_index	8793	-158	30	4	3.4	Vorren et al. (2002)
saarikko	Saarikko	E Finland	62.25	27.67	98 lake	d ¹⁸ O; cell	9879	128	71	3	1.6	Heikkilä et al. (2010)

Arctic Holocene proxy climate database

H. S. Sundqvist et al.

Table 2. Proxy records in the database. See Table 1 for information about each site (Notes: see Table 1 for explanation of punctuation and abbreviations for proxy types; see text for discussion of “proxy climate variable”; site short name = title of tab in excel spreadsheet – database with proxy and geochronology data; vpIR record = time series heading within the proxy data sheet; statistical detail abbreviations as follows: ML = Maximum Likelihood; MAT = Modern Analog Technique; RESP = Response Surface; PLS = Partial Least Squares; SDF = Speleothem Delta Function; WAPLS = Weighted-Average Partial Least Squares).

Site short name	Proxy	Proxy climate variable							Relation	Quantitative reconstruction
		vpIR record	Units	Climate variable	Climate variable detail	Seasonality	Statistical detail			
Alaska and Yukon										
andy	pollen	precip	mm	precip	rain + snow	annual	MAT	positive	X	
andy	pollen	temp	°C	temp	air	coldest	MAT	positive	X	
andy	pollen	temp	°C	temp	air	warmest	MAT	positive	X	
bells	pollen	precip	mm	precip	rain + snow	annual	MAT	positive	X	
bells	pollen	temp	°C	temp	air	coldest	MAT	positive	X	
bells	pollen	temp	°C	temp	air	warmest	MAT	positive	X	
candelabra	pollen	precip	mm	precip	rain + snow	annual	MAT	positive	X	
candelabra	pollen	temp	°C	temp	air	coldest	MAT	positive	X	
candelabra	pollen	temp	°C	temp	air	warmest	MAT	positive	X	
dune	d13C.bulk_organics	d13C	permil	precip	eff	annual	mean	negative		
farewell	MgCa.ostracodes	Mg/Ca	mmol mol ⁻¹	temp	lake_surface	summer	mean	positive		
GGC19	dinocysts	sea_ice_months	months yr ⁻¹	ice	sea	annual	?	positive	X	
GGC19	dinocysts	sea_ice_months	months yr ⁻¹	ice	sea	annual	MAT	positive	X	
GGC19	dinocysts	sea_ice_conc	0–10	ice	sea	annual	MAT	positive	X	
GGC19	dinocysts	salinity	psu	salinity	sea_surface	summer	MAT	positive	X	
GGC19	dinocysts	salinity	psu	salinity	sea_surface	winter	MAT	positive	X	
GGC19	d ¹⁸ O.forams	temp	°C	temp	bottomwater	annual	?	positive	X	
GGC19	d ¹⁸ O.forams	temp	°C	temp	sea_surface	annual	mean	positive	X	
GGC19	dinocysts	temp	°C	temp	sea_surface	summer	MAT	positive	X	
GGC19	dinocysts	temp	°C	temp	sea_surface	winter	MAT	positive	X	
greyling	OM	OM	%	ELA	glacier	annual	mean	positive		
hail	pollen	precip	mm	precip	rain + snow	annual	MAT	positive	X	
hail	pollen	temp	°C	temp	air	coldest	MAT	positive	X	
hail	pollen	temp	°C	temp	air	warmest	MAT	positive	X	
hallet	OM	OM	%	ELA	glacier	annual	mean	positive		
hallet	BSi	BSi	mg g ⁻¹	temp	air	summer	mean	positive		
HLY0501	dinocysts	sea_ice_months	months yr ⁻¹	ice	sea	annual	MAT	positive	X	
HLY0501	dinocysts	sea_ice_conc	0–10	ice	sea	annual	MAT	positive	X	
HLY0501	dinocysts	salinity	psu	salinity	sea_surface	summer	MAT	positive	X	
HLY0501	dinocysts	salinity	psu	salinity	sea_surface	winter	MAT	positive	X	
HLY0501	dinocysts	temp	°C	temp	sea_surface	summer	MAT	positive	X	
HLY0501	dinocysts	temp	°C	temp	sea_surface	winter	MAT	positive	X	
honeymoon	pollen	precip	mm	precip	rain + snow	annual	MAT	positive	X	
honeymoon	pollen	temp	°C	temp	air	coldest	MAT	positive	X	

Title Page

Abstract

Introduction

Conclusions

References

Tables

Figures



Back

Close

Full Screen / Esc

Printer-friendly Version

Interactive Discussion



Table 2. Continued.

honeymoon	pollen	temp	°C	temp	air	warmest	MAT	positive	X
hudson	chironomids	temp	°C	temp	air	July	WAPLS2	positive	X
jellybean	d ¹⁸ O.calcite	d ¹⁸ O	permil	mode	Aleutian_low	winter	mean	negative	
kusawa	BSi	BSi	%	temp	air	summer	mean	positive	
lily	pollen	precip	mm	precip	rain + snow	annual	MAT	positive	X
lily	pollen	temp	°C	temp	air	coldest	MAT	positive	X
lily	pollen	temp	°C	temp	air	warmest	MAT	positive	X
logan	d ¹⁸ O.ice	d ¹⁸ O	permil	mode	Aleutian_low	winter	mean	negative	
lonespruce	BSi	BSi	%	temp	air	growing	mean	positive	
meleze	pollen	precip	mm	precip	rain + snow	annual	MAT	positive	X
meleze	pollen	temp	°C	temp	air	coldest	MAT	positive	X
meleze	pollen	temp	°C	temp	air	warmest	MAT	positive	X
mica	d ¹⁸ O.diatom	d ¹⁸ O	permil	mode	Aleutian_low	winter	mean	positive	
moose	chironomids	temp	°C	temp	air	July	WAPLS	positive	X
P1B3	dinocysts	sea_ice_conc	0–10	ice	sea	annual	MAT	positive	X
P1B3	dinocysts	sea_ice_months	months yr ⁻¹	ice	sea	annual	months	positive	X
P1B3	dinocysts	salinity	psu	salinity	sea_surface	summer	MAT	positive	X
P1B3	dinocysts	salinity	psu	salinity	sea_surface	winter	MAT	positive	X
P1B3	dinocysts	temp	°C	temp	sea_surface	summer	MAT	positive	X
P1B3	dinocysts	temp	°C	temp	sea_surface	winter	MAT	positive	X
quartz	chironomids	temp	°C	temp	air	July	WAPLS2	positive	X
rainbow	chironomids	temp	°C	temp	air	July	WAPLS2	positive	X
ranger	pollen	precip	mm	precip	rain + snow	annual	MAT	positive	X
ranger	pollen	temp	°C	temp	air	coldest	MAT	positive	X
ranger	pollen	temp	°C	temp	air	warmest	MAT	positive	X
screaminglynx	chironomids	temp	°C	temp	air	July	WAPLS2	positive	X
takahula	d ¹⁸ O.calcite	d ¹⁸ O	permil	precip	eff	annual	mean	negative	
trout	chironomids	temp	°C	temp	air	July	WAPLS	positive	X
trout	chironomids	temp	°C	temp	air	July	WAPLS	positive	X
upper_fly	pollen	precip	mm	precip	rain + snow	annual	MAT	positive	X
upper_fly	pollen	temp	°C	temp	air	July	MAT	positive	X
waskey	DBD	bulk density	g cm ⁻³	temp	air	summer	mean	negative	
wolverine	MAR	MAR	g cm ⁻² yr ⁻¹	precip	eff	annual	sum	negative	
Canadian islands and Greenland									
agassiz	d ¹⁸ O.ice	d ¹⁸ O	permil	temp	air	annual	mean	positive	
agassiz	d ¹⁸ O.ice	d ¹⁸ O	permil	temp	air	annual	mean	positive	
agassiz	d ¹⁸ O.ice	d ¹⁸ O	permil	temp	air	annual	mean	positive	
agassiz	d ¹⁸ O.ice	d ¹⁸ O	permil	temp	air	annual	mean	positive	
agassiz	ice.melt	ice_melt_fraction	%	temp	air	summer	mean	positive	
akvaquak	pollen	sun_frac	unitless	sun	surface	JJAS	MAT	positive	X
akvaquak	pollen	sun_frac_max	unitless	sun	surface	JJAS	maxMAT	positive	X
akvaquak	pollen	sun_frac_min	unitless	sun	surface	JJAS	minMAT	positive	X
akvaquak	pollen	temp	°C	temp	air	July	MAT	positive	X
akvaquak	pollen	temp_max	°C	temp	air	July	maxMAT	positive	X
akvaquak	pollen	temp_min	°C	temp	air	July	minMAT	positive	X
ARC3	IP25	IP25_flux	g cm ⁻² yr ⁻¹	ice	sea	spring	occurrence	positive	

CPD

10, 1–63, 2014

Arctic Holocene proxy climate database

H. S. Sundqvist et al.

Title Page

Abstract

Introduction

Conclusions

References

Tables

Figures

⏪

⏩

◀

▶

Back

Close

Full Screen / Esc

Printer-friendly Version

Interactive Discussion



Table 2. Continued.

BC01	OM	OM	wt%	temp	air	summer	mean	positive	
BC01	BSi	BSi	wt%	temp	air	summer	mean	positive	
big_round	MS	MS	cgs	glacier	extent	annual	max	positive	
braya_so	alkenones	UK37	index	temp	lake_surface	summer	mean	positive	
century	d ¹⁸ O.ice	d ¹⁸ O	permil smow	temp	air	annual	mean	positive	
DA05	diatoms	sea_ice_diatoms	%	ice	sea	annual	MAT	positive	
devon	d ¹⁸ O.ice	d ¹⁸ O	permil smow	temp	air	annual	mean	positive	
Dye3	d ¹⁸ O.ice	d ¹⁸ O	permil smow	temp	air	annual	mean	positive	
flower_valley	dD	dD	permil	precip	eff	annual	sum	positive	
GISP2	d ¹⁸ O.ice	temp	°C	temp	air	annual	isotopes	positive	X
GRIP	d ¹⁸ O.ice	d ¹⁸ O	permil smow	temp	air	annual	mean	positive	
hjord	chironomids	CCA1	sd units	temp	air	summer	mean	negative	
HU84	dinocysts	sea_ice_months	months/yr	ice	sea	annual	MAT	positive	X
HU84	dinocysts	sea_ice_conc	0-10	ice	sea	annual	MAT	positive	X
HU84	dinocysts	salinity	psu	salinity	sea_surface	summer	MAT	positive	X
HU84	dinocysts	salinity	psu	salinity	sea_surface	winter	MAT	positive	X
HU84	dinocysts	temp	°C	temp	sea_surface	summer	MAT	positive	X
HU84	dinocysts	temp	°C	temp	sea_surface	winter	MAT	positive	X
HU90	dinocysts	sea_ice_months	months/yr	ice	sea	annual	MAT	positive	X
HU90	dinocysts	sea_ice_conc	0-10	ice	sea	annual	MAT	positive	X
HU90	dinocysts	salinity	psu	salinity	sea_surface	summer	MAT	positive	X
HU90	dinocysts	salinity	psu	salinity	sea_surface	winter	MAT	positive	X
HU90	dinocysts	temp	°C	temp	sea_surface	summer	MAT	positive	X
HU90	dinocysts	temp	°C	temp	sea_surface	winter	MAT	positive	X
HU91	dinocysts	sea_ice_months	months/yr	ice	sea	annual	MAT	positive	X
HU91	dinocysts	sea_ice_conc	0-10	ice	sea	annual	MAT	positive	X
HU91	dinocysts	salinity	psu	salinity	sea_surface	summer	MAT	positive	X
HU91	dinocysts	salinity	psu	salinity	sea_surface	winter	MAT	positive	X
HU91	dinocysts	temp	°C	temp	sea_surface	summer	MAT	positive	X
HU91	dinocysts	temp	°C	temp	sea_surface	winter	MAT	positive	X
igaliku	pollen.flux	pollen_count	g/cm2/yr	temp	air	summer	mean	positive	
iglutalik	pollen	temp	°C	temp	air	July	RESP	positive	X
jake	pollen	temp	°C	temp	air	July	RESP	positive	X
LS009	dinocysts	sea_ice_months	months/yr	ice	sea	annual	MAT	positive	X
LS009	dinocysts	sea_ice_conc	0-10	ice	sea	annual	MAT	positive	X
LS009	dinocysts	salinity	psu	salinity	sea_surface	summer	MAT	positive	X
LS009	dinocysts	salinity	psu	salinity	sea_surface	winter	MAT	positive	X
LS009	dinocysts	temp	°C	temp	sea_surface	summer	MAT	positive	X
LS009	dinocysts	temp	°C	temp	sea_surface	winter	MAT	positive	X
MD99-2227	dinocysts	sea_ice_months	months/yr	ice	sea	annual	MAT	positive	X
MD99-2227	dinocysts	sea_ice_conc	0-10	ice	sea	annual	MAT	positive	X
MD99-2227	dinocysts	salinity	psu	salinity	sea_surface	summer	MAT	positive	X
MD99-2227	dinocysts	salinity	psu	salinity	sea_surface	winter	MAT	positive	X
MD99-2227	dinocysts	temp	°C	temp	sea_surface	summer	MAT	positive	X
MD99-2227	dinocysts	temp	°C	temp	sea_surface	winter	MAT	positive	X
MD99-2227	dinocysts	temp	°C	temp	sea_surface	summer	MAT	positive	X
MD99-2227	dinocysts	temp	°C	temp	sea_surface	winter	MAT	positive	X
naujg1	mineral.content	ROI	%	temp	air	summer	mean	positive	
NGRIP	d ¹⁸ O.ice	d ¹⁸ O	permil smow	temp	air	annual	mean	positive	
north	chironomids	temp	°C	temp	air	July	WAT	positive	X
north	OM	OM	%	temp	air	summer	mean	positive	

Arctic Holocene proxy climate database

H. S. Sundqvist et al.

Title Page

Abstract

Introduction

Conclusions

References

Tables

Figures



Back

Close

Full Screen / Esc

Printer-friendly Version

Interactive Discussion



Table 2. Continued.

north	BSi	BSi	%	temp	air	summer	mean	positive	
penny	d ¹⁸ O.ice	d ¹⁸ O	permil	temp	air	annual	mean	positive	
penny	d ¹⁸ O.ice	d ¹⁸ O	permil	temp	air	annual	mean	positive	
qipisirargo	pollen	sun_frac	unitless	sun	surface	JJAS	MAT	positive	X
qipisirargo	pollen	sun_frac_max	unitless	sun	surface	JJAS	maxMAT	positive	X
qipisirargo	pollen	sun_frac_min	unitless	sun	surface	JJAS	minMAT	positive	X
qipisirargo	pollen	temp	°C	temp	air	July	MAT	positive	X
qipisirargo	pollen	temp_max	°C	temp	air	July	maxMAT	positive	X
qipisirargo	pollen	temp_min	°C	temp	air	July	minMAT	positive	X
renland	d ¹⁸ O	d ¹⁸ O	permil	temp	air	annual	mean	positive	
sf14-1	OM	OM	%	temp	air	summer	mean	positive	
SP02	OM	OM	%	temp	air	summer	mean	positive	
SS1381	mineral.flux	mineral_flux	g/cm2/yr	precip	eff	annual	sum	positive	
SS16	diatoms	CCA1	unitless	precip	eff	annual	sum	positive	
SS49	diatoms	CCA1	unitless	precip	eff	annual	sum	positive	
SS8	mineral.flux	mineral_flux	g/cm2/yr	precip	eff	annual	sum	positive	
Fennoscandia									
arapisto	pollen	temp	°C	temp	air	annual	WAPLS	positive	X
austerkjosen	pollen	temp	°C	temp	air	July	WAPLS	positive	X
berkut	chironomids	temp	°C	temp	air	July	WAPLS	positive	X
bjornfjelltjorn	pollen	temp	°C	temp	air	July	WAPLS	positive	X
bruskardstjorni	chironomids	temp	°C	temp	air	July	WAPLS	positive	X
chuna	d ¹⁸ O.diatoms	d ¹⁸ O	permil	mode	NAO	winter	none	positive	
chuna	pollen	precip	mm	precip	rain+snow	annual	MAT	positive	X
chuna	pollen	temp	°C	temp	air	July	MAT	positive	X
dalene	pollen	temp	°C	temp	air	July	WAPLS	positive	X
dalmutladdo	pollen	precip	mm	precip	rain+snow	annual	WAPLS	positive	X
dalmutladdo	pollen	temp	°C	temp	air	January	WAPLS	positive	X
dalmutladdo	pollen	temp	°C	temp	air	July	WAPLS	positive	X
draviadalsvatn	DBD	ELA	mm	ELA	glacier	annual	mean	negative	X
fauske	d ¹⁸ O	d ¹⁸ O	permil	temp	air	annual	mean	negative	
Fiskebolvatnet	mass.flux	MAR	g/cm2/yr	precip	eff	annual	sum	positive	
Flarken	pollen	temp	°C	temp	air	annual	WAPLS	positive	X
flotattjonn	pollen	temp	°C	temp	air	July	WAPLS	positive	X
gammelheimvatnet	pollen	temp	°C	temp	air	July	WAPLS	positive	X
gilltjarnen	pollen	temp	°C	temp	air	annual	mean	positive	X
gilltjarnen	chironomids	temp	°C	temp	air	July	WAPLS	positive	X
gloppsjon	pollen	temp	°C	temp	air	annual	WAPLS	positive	X
grostjorn	pollen	temp	°C	temp	air	July	WAPLS	positive	X
gunnarsfjorden	pollen	GDD	°C	grow_deg_day	air	summer	DA	positive	X
gunnarsfjorden	pollen	precip	mm	precip	rain+snow	summer	DA	positive	X
gunnarsfjorden	pollen	precip	mm	precip	rain+snow	winter	DA	positive	X
gunnarsfjorden	pollen	AET/PET	unitless	precip	eff	annual	sum	positive	X
gunnarsfjorden	pollen	temp	°C	temp	air	coldest	mean	positive	X
gunnarsfjorden	pollen	temp	°C	temp	air	warmest	mean	positive	X
haugtjern	pollen	temp	°C	temp	air	July	WAPLS	positive	X
holebudalen	pollen	temp	°C	temp	air	July	WAPLS	positive	X
holebudalen	chironomids	temp	°C	temp	lake_surface	July	WAPLS	positive	X
igelsjon	d ¹⁸ O.calcite	d ¹⁸ O	permil pdb	precip	eff	annual	sum	negative	
isbentjonn	pollen	temp	°C	temp	air	July	WAPLS	positive	X
jarburvatnet	OM	OM	%	ELA	glacier	annual	mean	positive	

Arctic Holocene
proxy climate
database

H. S. Sundqvist et al.

Title Page

Abstract

Introduction

Conclusions

References

Tables

Figures



Back

Close

Full Screen / Esc

Printer-friendly Version

Interactive Discussion



Table 2. Continued.

kinnshaugen	pollen	temp	°C	temp	air	July	WAPLS	positive	X
kjennsvatn	DBD	ELA	mm	ELA	glacier	annual	mean	positive	X
klotjarnen	pollen	temp	°C	temp	air	annual	WAPLS	positive	X
kortlanda	humification_index	humification_index	abs	precip	eff	annual	mean	negative	
kortlanda	humification_index	humification_index	abs	precip	eff	annual	mean	negative	
KP2	pollen	temp	°C	temp	air	July	WAPLS	positive	X
laihalampi	pollen	temp	°C	temp	air	annual	WAPLS	positive	X
lake850	d ¹⁸ O.diatoms	d ¹⁸ O	permil	mode	?	?	?	positive	
lake850	chironomids	temp	°C	temp	air	July	WAPLS	positive	X
lake850	diatoms	temp	°C	temp	air	July	WAPLS	positive	X
lapland	width	temp	°C	temp	air	July	linear	positive	X
liitvatn	pollen	temp	°C	temp	air	July	WAPLS	positive	X
myrvatn	pollen	temp	°C	temp	air	July	WAPLS	positive	X
nattmalsvatn	MS	MS	m3/kg	precip	rain+snow	winter	sum	positive	
nautjarvi	pollen	temp	°C	temp	air	annual	WAPLS	positive	X
nerfloen	multi-proxyPCscore	PC1	unitless	precip	rain+snow	winter	sum	positive	
njakajaure	diatoms	temp	°C	temp	air	July	WAPLS	positive	X
njulla	diatoms	temp	°C	temp	air	July	WAPLS	positive	X
njulla	chironomids	temp	°C	temp	air	July	WAPLS	positive	X
oykjamrtjorn	pollen	temp	°C	temp	air	July	WAPLS	positive	X
oykjamrtjorn	chironomids	temp	°C	temp	air	July	WAPLS	positive	X
raigastvere	pollen	temp	°C	temp	air	annual	WAPLS	positive	X
ratasjoen	chironomids	temp	°C	temp	air	July	WAPLS	positive	X
reiarisdalsvatnet	pollen	temp	°C	temp	air	July	WAPLS	positive	X
ruila	pollen	temp	°C	temp	air	annual	WAPLS	positive	X
rystad	humification_index	humification_index	%	precip	eff	annual	mean	negative	
saarikko	d ¹⁸ O.cell	d ¹⁸ O	permil	precip	eff	annual	mean	negative	
sellevollmyra	humification_index	humification_index	%	precip	eff	annual	mean	negative	
sjuuodjijaure	pollen	temp	°C	temp	air	July	WAPLS	positive	X
sjuuodjijaure	chironomids	temp	°C	temp	air	July	WAPLS	positive	X
sjuuodjijaure	diatoms	temp	°C	temp	air	July	WAPLS	positive	X
soylegrotta	d ¹⁸ O	temp	°C	temp	air	annual	SDF	positive	X
spaime	d ¹⁸ O.cellulose	d ¹⁸ O	permil smow	mode	NAO	winter	none	positive	
spaime	chironomids	temp	°C	temp	air	July	WAPLS	positive	X
Stomyren	humification_index	humification_index	abs	precip	eff	annual	mean	negative	
svanavatnet	pollen	precip	mm	precip	rain+snow	annual	WAPLS	positive	X
svanavatnet	pollen	temp	°C	temp	air	January	WAPLS	positive	X
svanavatnet	pollen	temp	°C	temp	air	July	WAPLS	positive	X
svartkalstjarn	d ¹⁸ O	d ¹⁸ O	permil smow	precip	rain+snow	winter	sum	positive	
svartvatnet	pollen	temp	°C	temp	air	July	WAPLS	positive	X
tiavatnet	pollen	temp	°C	temp	air	July	WAPLS	positive	X
tibetanus	d ¹⁸ O	d ¹⁸ O	permil pdb	mode	?	?	?	positive	
tibetanus	pollen	precip	mm	precip	rain+snow	annual	WAPLS	positive	X
tibetanus	pollen	temp	°C	temp	air	July	WAPLS	positive	X
tornetrask	width	temp	°C	temp	air	JJA	mean	positive	X
toskaljavri	pollen	precip	mm	precip	rain + snow	annual	WAPLS	positive	X
toskaljavri	pollen	temp	°C	temp	air	July	WAPLS	positive	X
toskaljavri	chironomids	temp	°C	temp	air	July	WAPLS	positive	X
trehorningen	pollen	temp	°C	temp	air	annual	WAPLS	positive	X

Arctic Holocene
proxy climate
database

H. S. Sundqvist et al.

Title Page

Abstract

Introduction

Conclusions

References

Tables

Figures



Back

Close

Full Screen / Esc

Printer-friendly Version

Interactive Discussion



**Arctic Holocene
proxy climate
database**

H. S. Sundqvist et al.

Table 2. Continued.

trettetjorn	pollen	temp	°C	temp	air	July	WAPLS	positive	X
tsuolbmajavri	pollen	precip	mm	precip	rain + snow	annual	WAPLS	positive	X
tsuolbmajavri	diatoms	temp	°C	temp	air	July	WAPLS	positive	X
tsuolbmajavri	chironomids	temp	°C	temp	air	July	WAPLS	positive	X
vikjordvatnet	OM.flux	OM_flux	g cm ⁻² yr ⁻¹	temp	air	annual	mean	positive	
vuoskkujavri	pollen	precip	mm	precip	rain + snow	annual	WAPLS	positive	X
vuoskkujavri	pollen	temp	°C	temp	air	January	WAPLS	positive	X
vuoskkujavri	chironomids	temp	°C	temp	air	July	WAPLS	positive	X
vuoskkujavri	diatoms	temp	°C	temp	air	July	WAPLS	positive	X
vuoskkujavri	pollen	temp	°C	temp	air	July	WAPLS	positive	X
yarnyshnoe	pollen	temp	°C	temp	air	July	WAPLS	positive	X
Mainland Canada									
2005–804	dinocysts	sea_ice_months	months yr ⁻¹	ice	sea	annual	MAT	positive	X
2005-804	dinocysts	sea_ice_conc	0–10	ice	sea	annual	MAT	positive	X
2005-804	dinocysts	salinity	psu	salinity	sea_surface	summer	MAT	positive	X
2005-804	dinocysts	salinity	psu	salinity	sea_surface	winter	MAT	positive	X
2005-804	dinocysts	temp	°C	temp	sea_surface	summer	MAT	positive	X
2005-804	dinocysts	temp	°C	temp	sea_surface	winter	MAT	positive	X
ARC4	IP25	IP25_flux	µg cm ⁻² yr ⁻¹	ice	sea	spring	occurrence	positive	
ARC5	IP25	IP25_flux	g cm ⁻² yr ⁻¹	ice	sea	spring	occurrence	positive	
ennadai	pollen	precip	mm	precip	rain + snow	annual	MAT	positive	X
ennadai	pollen	temp	°C	temp	air	coldest	MAT	positive	X
ennadai	pollen	temp	°C	temp	air	warmest	MAT	positive	X
JR01	pollen	temp	°C	temp	air	July	MAT	positive	X
k2	pollen,chironomids, diatoms	temp	°C	temp	air	July	WAPLS	positive	X
KR02	pollen	precip	mm	precip	rain + snow	annual	MAT	positive	X
KR02	pollen	precip	mm	precip	rain + snow	annual	PLS	positive	X
KR02	pollen	precip	mm	precip	rain + snow	annual	WAPLS	positive	X
KR02	pollen	temp	°C	temp	air	July	MAT	positive	X
KR02	pollen	temp	°C	temp	air	July	PLS	positive	X
KR02	pollen	temp	°C	temp	air	July	WAPLS	positive	X
KR02	BSi	BSi	%	temp	air	summer	mean	positive	
LR01	pollen	precip	mm	precip	rain + snow	annual	MAT	positive	X
LR01	pollen	temp	°C	temp	air	coldest	MAT	positive	X
LR01	pollen	temp	°C	temp	air	warmest	MAT	positive	X
s53s52	d13C.bulk_organics	temp	°C	temp	air	July	linear	positive	X
toronto unit	d ¹⁸ O.cellulose ARM/IRM	d ¹⁸ O ARM/IRM	permil smow unitless	precip precip	eff eff	annual annual	none sum	negative positive	
whatever	d ¹⁸ O.cellulose	d ¹⁸ O	permil smow	precip	eff	annual	sum	negative	

Title Page

Abstract

Introduction

Conclusions

References

Tables

Figures

⏪

⏩

◀

▶

Back

Close

Full Screen / Esc

Printer-friendly Version

Interactive Discussion



Table 2. Continued.

North Atlantic and Iceland									
B997-321	d ¹⁸ O.forams	SST	°C	temp	near_surface	July	Bernise1998	positive	X
G1K23258	foraminifera.pl	SST	°C	temp	near_surface	summer	foram	positive	X
haukdalsvatn	BSi,d13C,C:N,TOC,MS,se_d_acc_rate	PC1	unitless	temp	air	summer	mean	positive	
hvitavatn	BSi,d13C,C:N,TOC,MS,se_d_acc_rate	PC1	unitless	temp	air	summer	mean	positive	
JM01-1199	foraminifera	SST	°C	temp	near_surface	summer	Est_ML	positive	X
JM96-1207	dinocysts	sea_ice_months	months yr ⁻¹	ice	sea	annual	MAT	positive	X
JM96-1207	dinocysts	sea_ice_conc	0-10	ice	sea	annual	MAT	positive	X
JM96-1207	dinocysts	salinity	psu	salinity	sea_surface	summer	MAT	positive	X
JM96-1207	dinocysts	salinity	psu	salinity	sea_surface	winter	MAT	positive	X
JM96-1207	dinocysts	temp	°C	temp	sea_surface	summer	MAT	positive	X
JM96-1207	dinocysts	temp	°C	temp	sea_surface	winter	MAT	positive	X
JR51-GC35	alkenones	SST	°C	temp	sea_surface	annual	mean	positive	X
LO09	diatoms	temp	°C	temp	sea_surface	August	WAPLS	positive	X
MD95-2011	foraminifera	SST	°C	temp	near_surface	August	WAPLS	positive	X
MD95-2011	diatoms	SST	°C	temp	sea_surface	annual	Prah1987	positive	X
MD95-2011	alkenones	SST	°C	temp	sea_surface	August	WAPLS	positive	X
MD95-2015	alkenones	SST	°C	temp	sea_surface	annual	Muller1998	positive	X
MD99-2256	foraminifera	SBT	°C	temp	bottomwater	annual	mean	positive	X
MD99-2264	foraminifera	SBT	°C	temp	bottomwater	annual	mean	positive	X
MD99-2269	diatoms	SST	°C	temp	sea_surface	August	WAPLS	positive	X
MD99-2317	d ¹⁸ O.forams	d ¹⁸ O	permil	temp	near_surface	?	?	negative	
MD99-2322	foraminifera	temp	°C	temp	near_surface	?	?	positive	X
MD99-2322	d ¹⁸ O.forams	d ¹⁸ O	permil	temp	near_surface	?	?	negative	
njauvatn	XRF,d13C, C, N, S, MS	PC1	unitless	temp&precip	air&rain + snow	annual	mean	positive	
MSM05-712	IP25	IP25_flux	µg cm ⁻² yr ⁻¹	ice	sea	?	?	positive	
MSM05-712	dinocysts	salinity	psu	ice	sea	annual	MAT	positive	X
MSM05-712	dinocysts	sea_ice_months	months yr ⁻¹	ice	sea	annual	MAT	positive	X
MSM05-712	dinocysts	temp	°C	salinity	sea_surface	summer	MAT	positive	X
MSM05-712	dinocysts	temp	°C	salinity	sea_surface	winter	MAT	positive	X
MSM05-712	dinocysts	salinity	psu	temp	sea_surface	summer	MAT	positive	X
MSM05-723	IP25	IP25_flux	µg cm ⁻² yr ⁻¹	ice	sea	?	?	positive	
ODP-684	Mg/Ca	temp	°C	temp	near_surface	summer	Langen2005	positive	X
P1003	forams	d ¹⁸ O	permil	temp	near_surface	?	?	negative	
PS2641	IP25	IP25_flux	µg cm ⁻² yr ⁻¹	ice	sea	?	?	positive	
RAPID-12	Mg/Ca	SST	°C	temp	near_surface	?	?	positive	X
Troll28-03	foraminifera	SST	°C	temp	near_surface	?	WAPLS	positive	X
Troll28-03	foraminifera	SST	°C	temp	near_surface	JJA	WAPLS	positive	X
Russian Arctic									
dolgoe	pollen	precip	mm	precip	rain + snow	annual	?	positive	X
dolgoe	not_climate_related	d ¹⁸ O	permil	precip	rain + snow	annual	sum	negative	
dolgoe	pollen	temp	°C	temp	air	July	mean	positive	X

Arctic Holocene proxy climate database

H. S. Sundqvist et al.

Title Page

Abstract

Introduction

Conclusions

References

Tables

Figures



Back

Close

Full Screen / Esc

Printer-friendly Version

Interactive Discussion



Arctic Holocene proxy climate database

H. S. Sundqvist et al.

Title Page

Abstract

Introduction

Conclusions

References

Tables

Figures



Back

Close

Full Screen / Esc

Printer-friendly Version

Interactive Discussion



Table 2. Continued.

kharinei	chironomids	temp	°C	temp	air	July	WAPLS	positive	X
kharinei	pollen	temp	°C	temp	air	MJJA	WAPLS	positive	X
lyadhej-To	pollen,chironomids,diatoms	temp	°C	temp	air	July	WAPLS	positive	X
PL-96	dinocysts	sea_ice_months	months yr ⁻¹	ice	sea	annual	MAT	positive	X
PL-96	dinocysts	sea_ice_conc	0–10	ice	sea	annual	MAT	positive	X
PL-96	dinocysts	salinity	psu	salinity	sea_surface	summer	MAT	positive	X
PL-96	dinocysts	salinity	psu	salinity	sea_surface	winter	MAT	positive	X
PL-96	dinocysts	temp	°C	temp	sea_surface	summer	MAT	positive	X
PL-96	dinocysts	temp	°C	temp	sea_surface	winter	MAT	positive	X
susy-kyuele	diatoms	diatom_concentration	1000*valves g ⁻¹	temp	lake_surface	summer	mean	positive	

**Arctic Holocene
proxy climate
database**

H. S. Sundqvist et al.

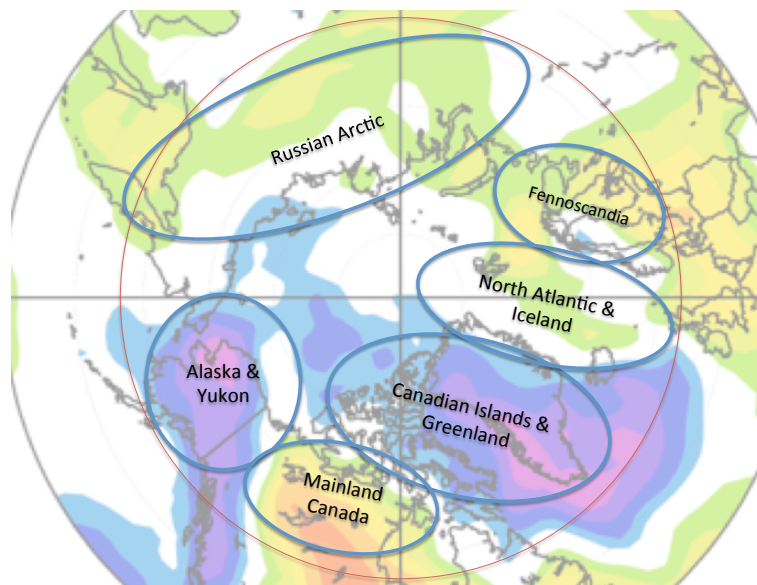


Fig. 1. Six Arctic regions represented in this database. Map colors indicate strength of correlation between summer temperature and the Arctic Oscillation (from NCEP/NCAR Reanalysis data).

[Title Page](#)[Abstract](#)[Introduction](#)[Conclusions](#)[References](#)[Tables](#)[Figures](#)[◀](#)[▶](#)[◀](#)[▶](#)[Back](#)[Close](#)[Full Screen / Esc](#)[Printer-friendly Version](#)[Interactive Discussion](#)

Arctic Holocene proxy climate database

H. S. Sundqvist et al.

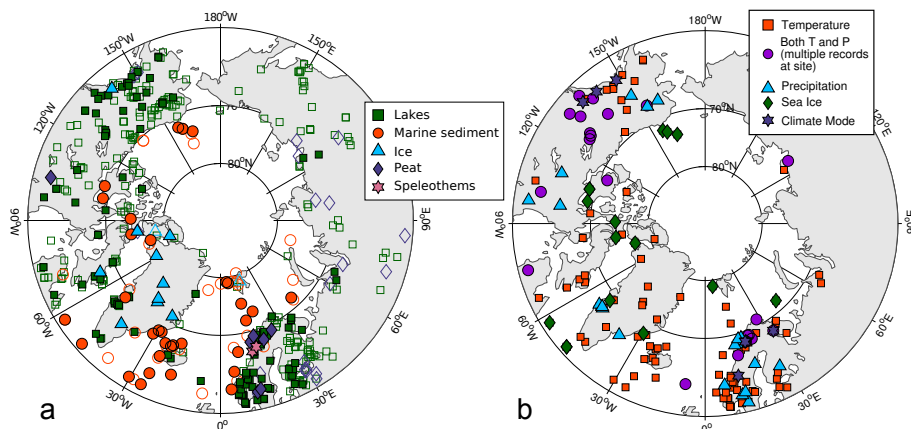


Fig. 2. Location of proxy records in this database. **(a)** Sites that meet the criteria for inclusion in this database (solid symbols) and those that did not (open symbols) plotted by material/archive type. **(b)** Sites that meet the criteria plotted by climate variable. Some sites have more than one time-series representing different climate variables. Information about each site is listed in Table 1 (accepted records) and Table S1 (excluded records).

Title Page

Abstract

Introduction

Conclusions

References

Tables

Figures



Back

Close

Full Screen / Esc

Printer-friendly Version

Interactive Discussion



Arctic Holocene proxy climate database

H. S. Sundqvist et al.

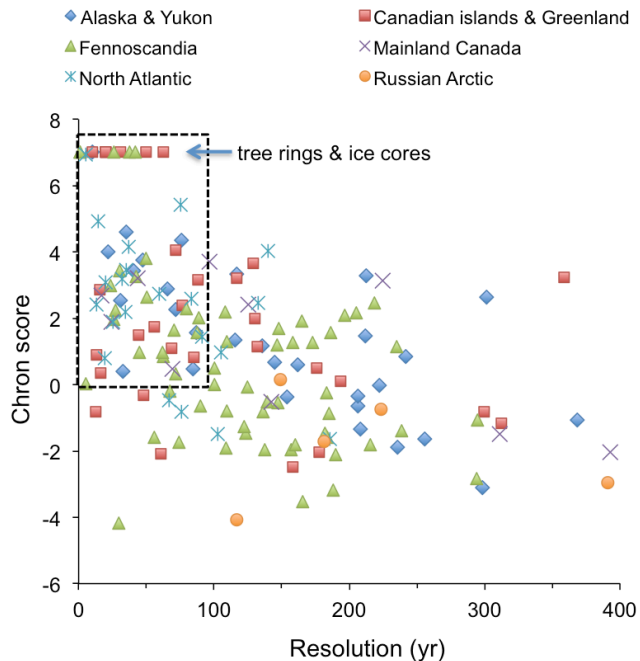


Fig. 3. Geochronology accuracy score (chron score) versus sampling resolution for records in the database. Records from trees and glacier ice are arbitrary assigned a chron score of 7. Highly resolved records (better than 100 yr average) with high chron scores (> 0) are enclosed by the square and their location is plotted in Fig. 4.

Title Page

Abstract

Introduction

Conclusions

References

Tables

Figures



Back

Close

Full Screen / Esc

Printer-friendly Version

Interactive Discussion



Arctic Holocene proxy climate database

H. S. Sundqvist et al.

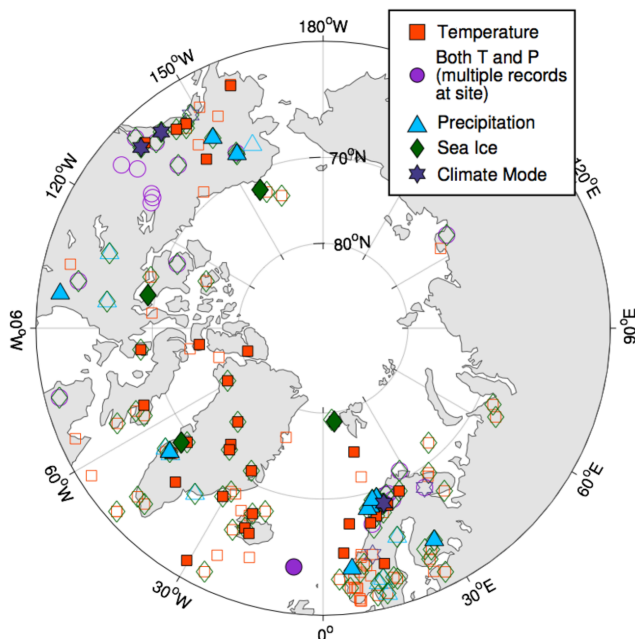


Fig. 4. Location of proxy records in the database with sampling resolution < 100 yr and geochronology accuracy score > 0 (solid symbols) relative to other records (open symbols) plotted by climate variable.

Title Page

Abstract

Introduction

Conclusions

References

Tables

Figures



Back

Close

Full Screen / Esc

Printer-friendly Version

Interactive Discussion

