

Supplementary Figures for “A synthesis of marine sediment core  $\delta^{13}\text{C}$  data over the last 150,000 years” by K. I. C. Oliver et al.

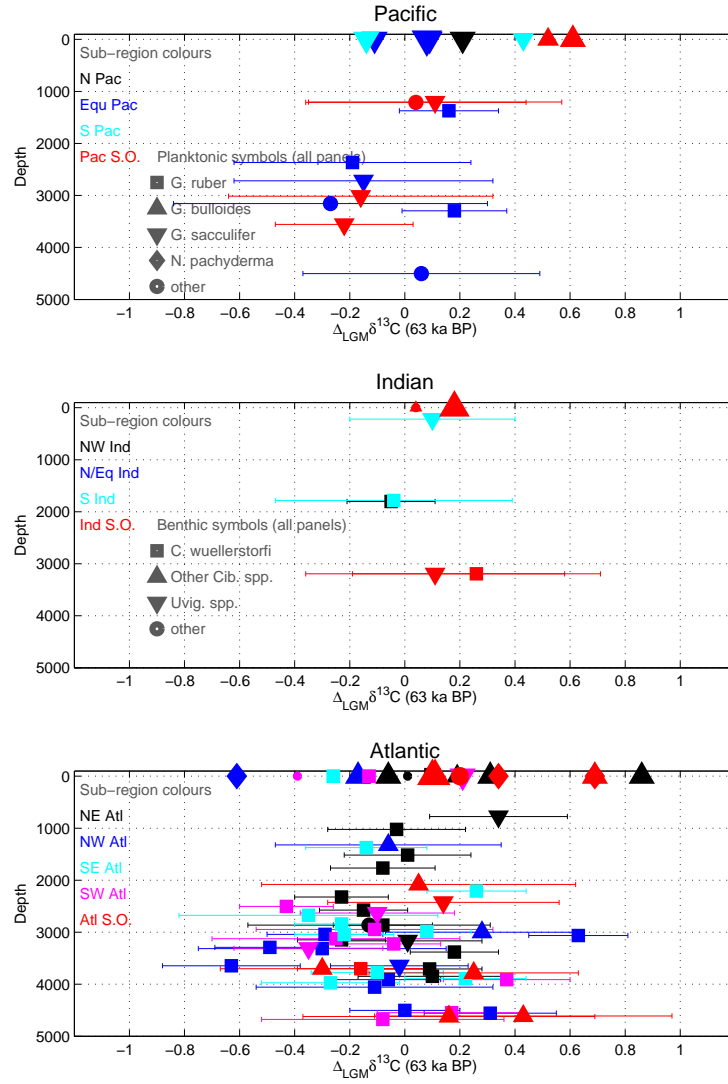


Figure 1: 63 ka  $\Delta_{LGM} \delta^{13}\text{C}$  time-slice, with  $2\sigma$  error bars on benthic data.

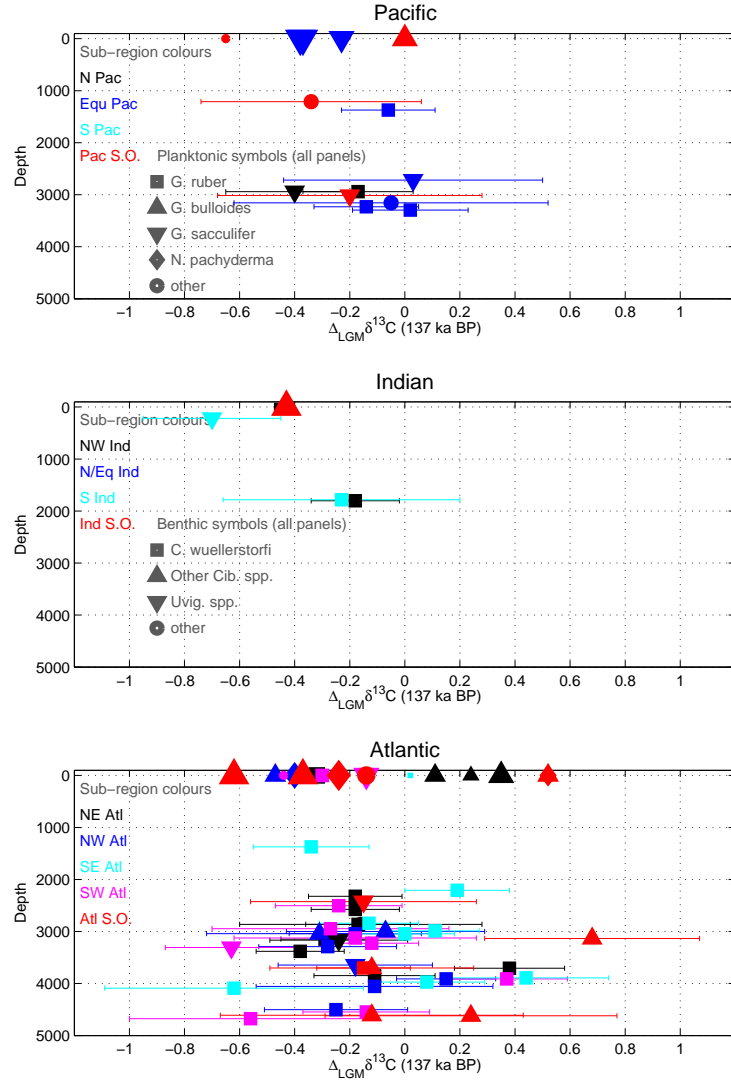


Figure 2: 137 ka  $\Delta_{LGM} \delta^{13}C$  time-slice, with  $2\sigma$  error bars on benthic data.

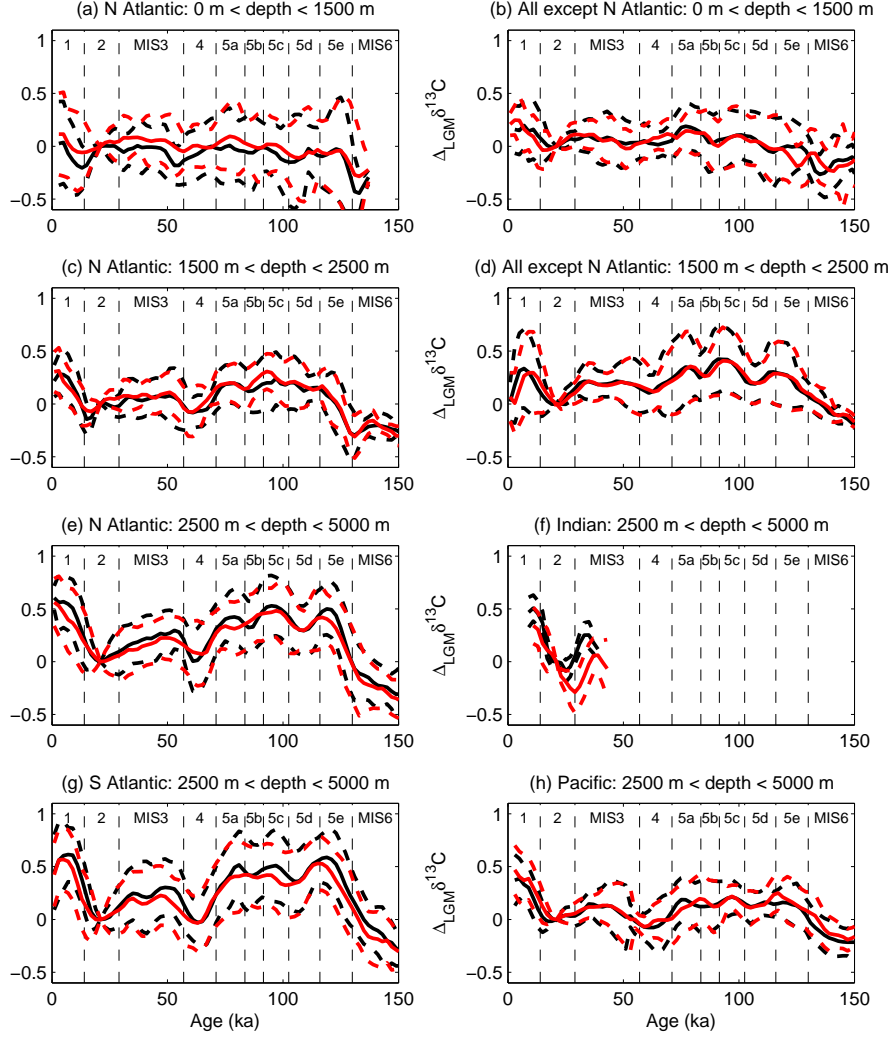


Figure 3: Mean and standard deviation, weighted by the square of the inverse of the error estimate, of benthic  $\Delta_{LGM} \delta^{13}C$  in each region. Data are only plotted where there are at least three records. Black indicates the full synthesis. Red indicates the full synthesis with random age errors, sampled from the distribution of age offsets obtained by comparison with previously published age estimates

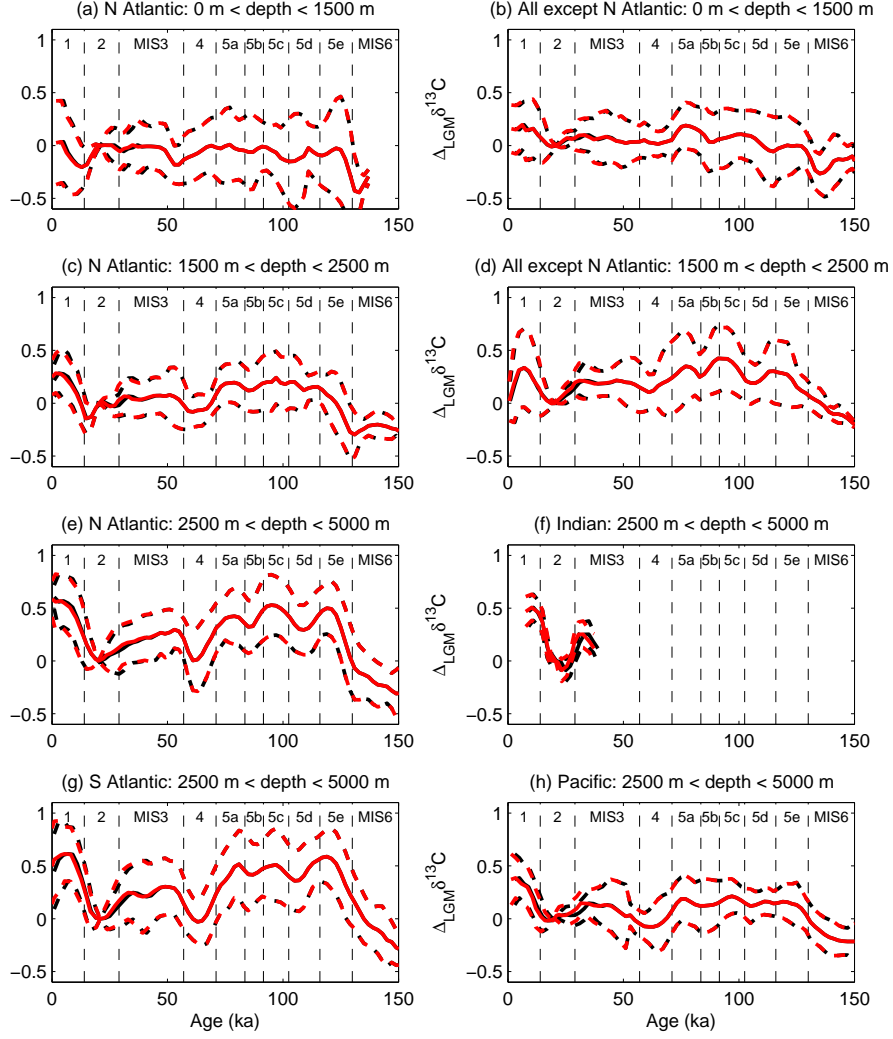


Figure 4: Mean and standard deviation, weighted by the square of the inverse of the error estimate, of benthic  $\Delta_{LGM}\delta^{13}\text{C}$  in each region. Data are only plotted where there are at least three records. Black indicates the full synthesis. Red indicates the full synthesis with ages adjusted by region to minimise the age offset relative to  $^{14}\text{C}$ -derived age estimates in each region.

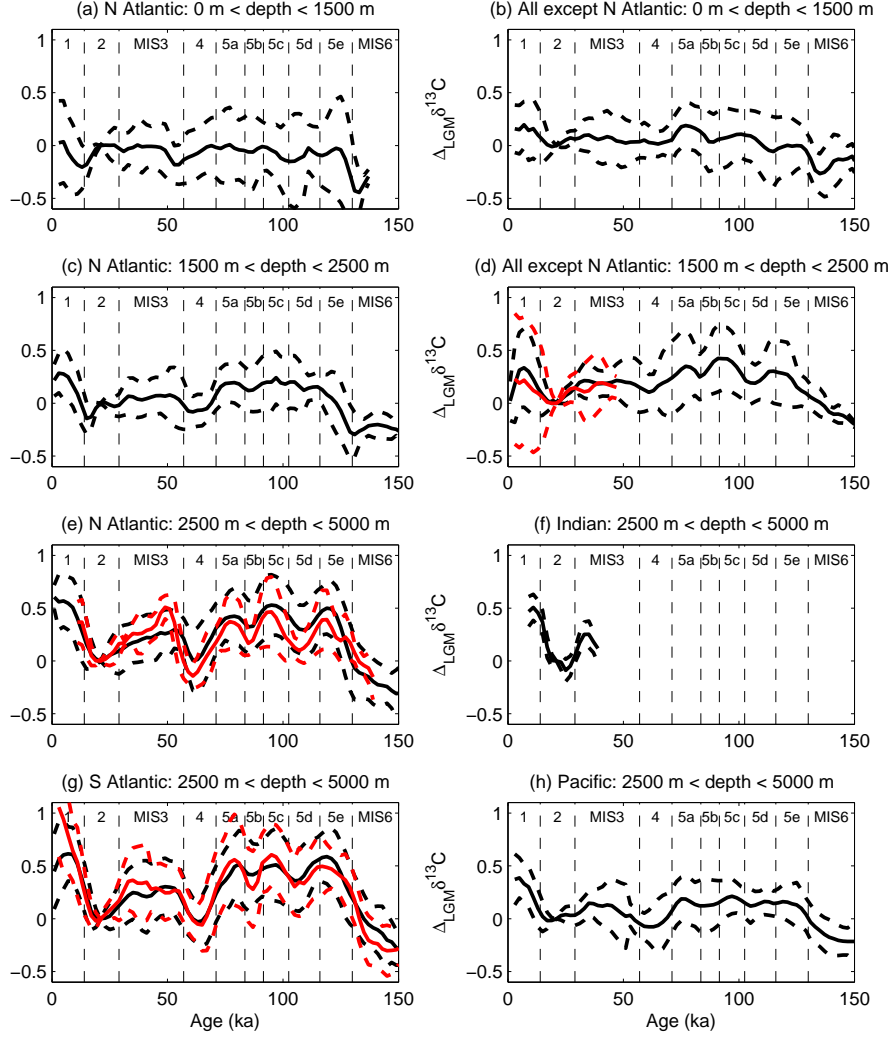


Figure 5: Mean and standard deviation, weighted by the square of the inverse of the error estimate, of benthic  $\Delta_{LGM}\delta^{13}\text{C}$  in each region. Data are only plotted where there are at least three records. Black indicates the full synthesis. Red indicates records flagged as being in upwelling regions or suspected of being subject to time-varying phytodetritus errors.

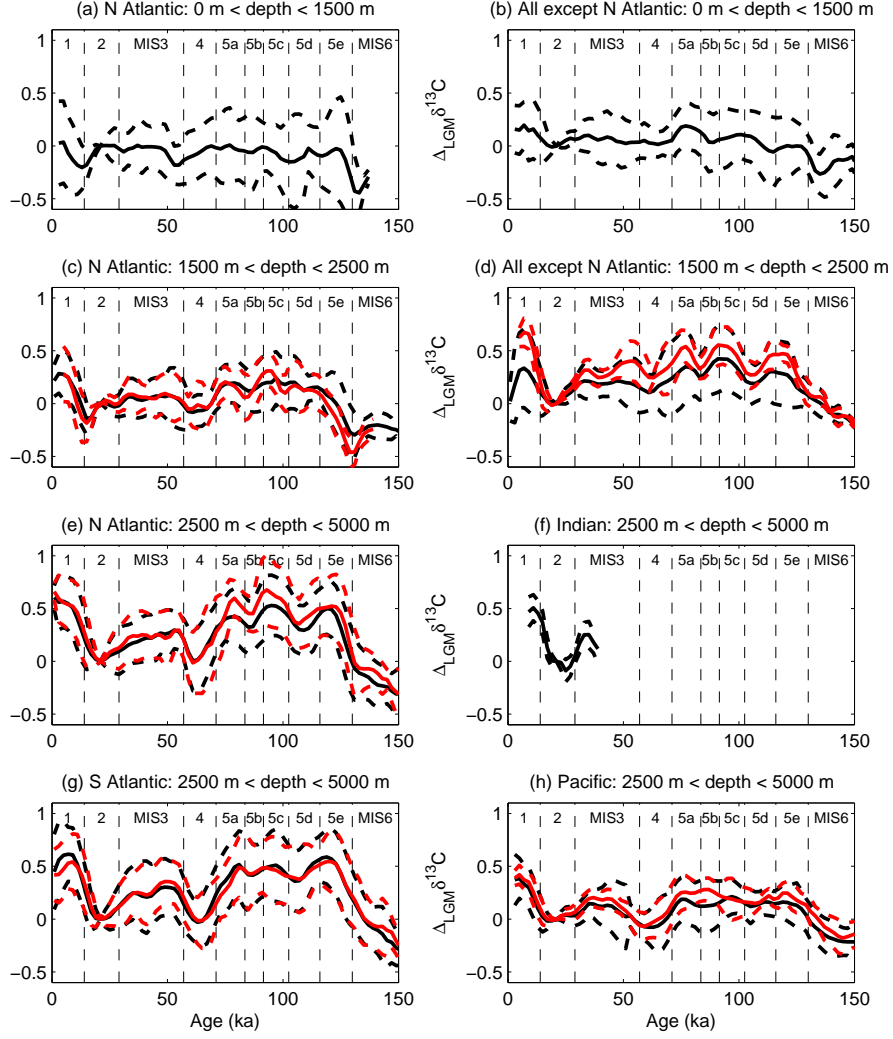


Figure 6: Mean and standard deviation, weighted by the square of the inverse of the error estimate, of benthic  $\Delta_{LGM} \delta^{13}C$  in each region. Data are only plotted where there are at least three records. Black indicates the full synthesis. Red indicates records with a sedimentation rate less than 3 cm/kyr.