



*Supplement of*

## **Correcting a systematic bias in an ocean drilling project site 882 alkenone sea surface temperature record**

**Joseph B. Novak et al.**

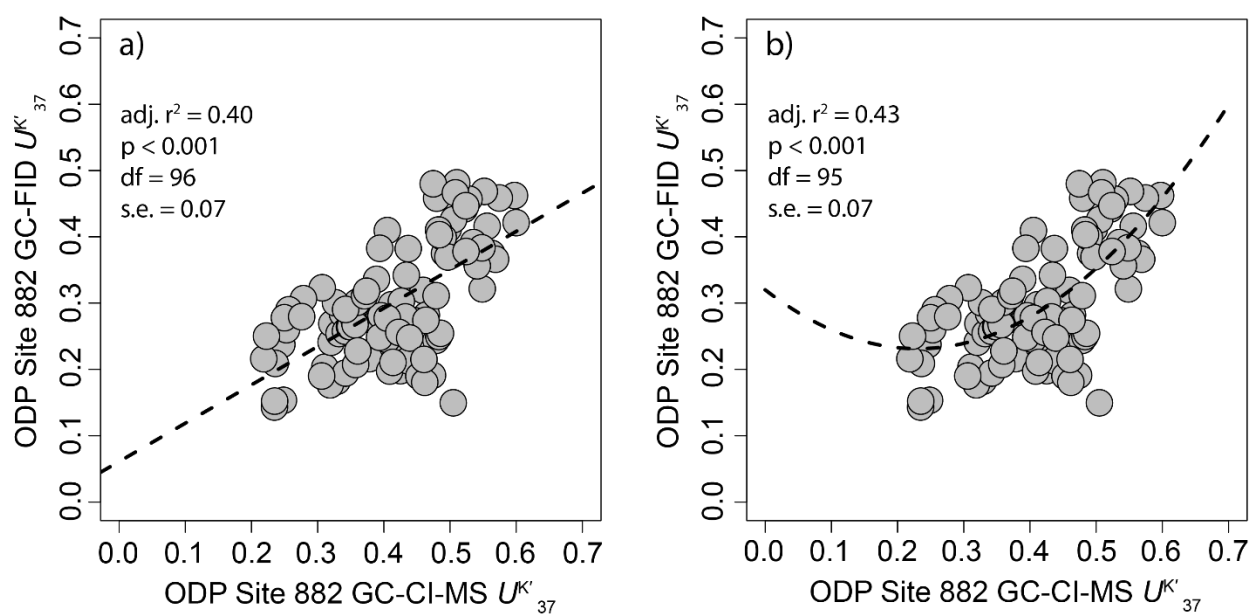
*Correspondence to:* Joseph B. Novak ([joseph\\_novak@brown.edu](mailto:joseph_novak@brown.edu))

The copyright of individual parts of the supplement might differ from the article licence.

# Table of Contents

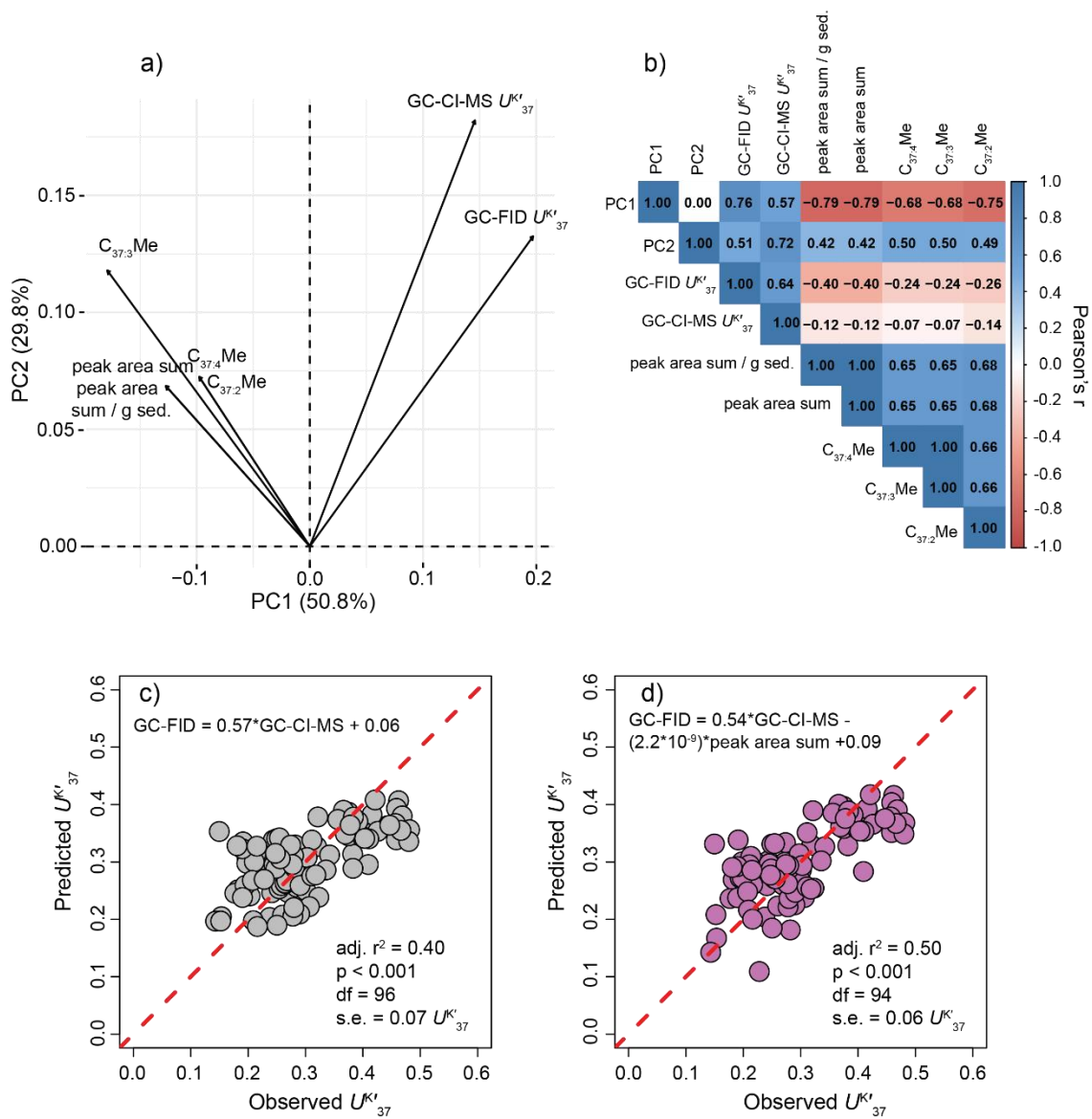
Supplementary Figures .....	3
<b>Figure S1:</b> .....	3
<b>Figure S2:</b> .....	4
<b>Figure S3:</b> .....	5

## Supplementary Figures



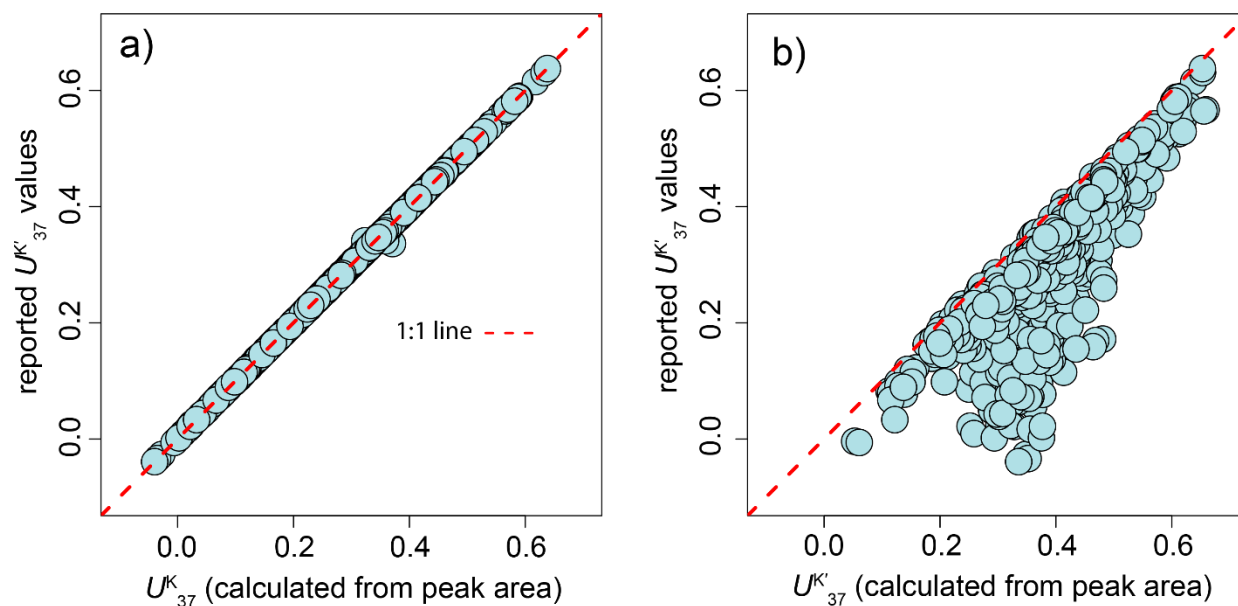
**Figure S1:**

**Linear and quadratic regressions of ODP Site 882 GC-CI-MS and GC-FID  $U^K_{37}$  values. (a) Linear regression. (b) Quadratic regression.**



**Figure S2:**

**Relationships between alkenone unsaturation ratios and GC-CI-MS instrument response (peak area) for the ODP Site 882 alkenone dataset. (a) principal components analysis. (b) correlation matrix. (c) Observed vs. predicted  $U^K_{37}$  values from a linear regression between ODP Site 882 GC-CI-MS and GC-FID  $U^K_{37}$  values. (d) Observed vs. predicted  $U^K_{37}$  values from a multiple linear regression between the sum of measured peak areas, ODP Site 882 GC-CI-MS  $U^K_{37}$ , and GC-FID  $U^K_{37}$  values.**



**Figure S3:**

**Confirming that the ODP Site 882 GC-CI-MS dataset is misreported on Pangaea. (a)** comparison of reported “ $U_{37}^K$ ” values at ODP Site 882 to  $U_{37}^K$  values calculated from peak area. **(b)** comparison of reported “ $U_{37}^K$ ” values at ODP Site 882 to  $U_{37}^K$  values calculated from peak area.