



## *Supplement of*

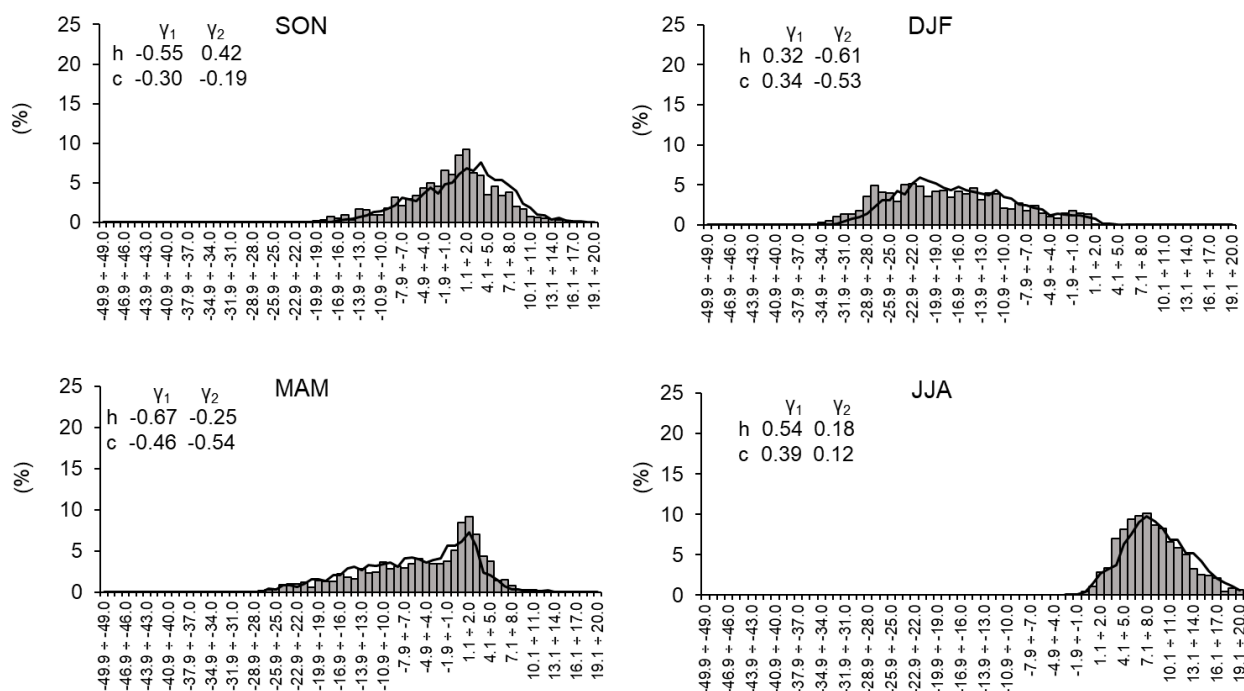
# **Thermal conditions on the coast of Labrador during the late 18th century**

**Garima Singh et al.**

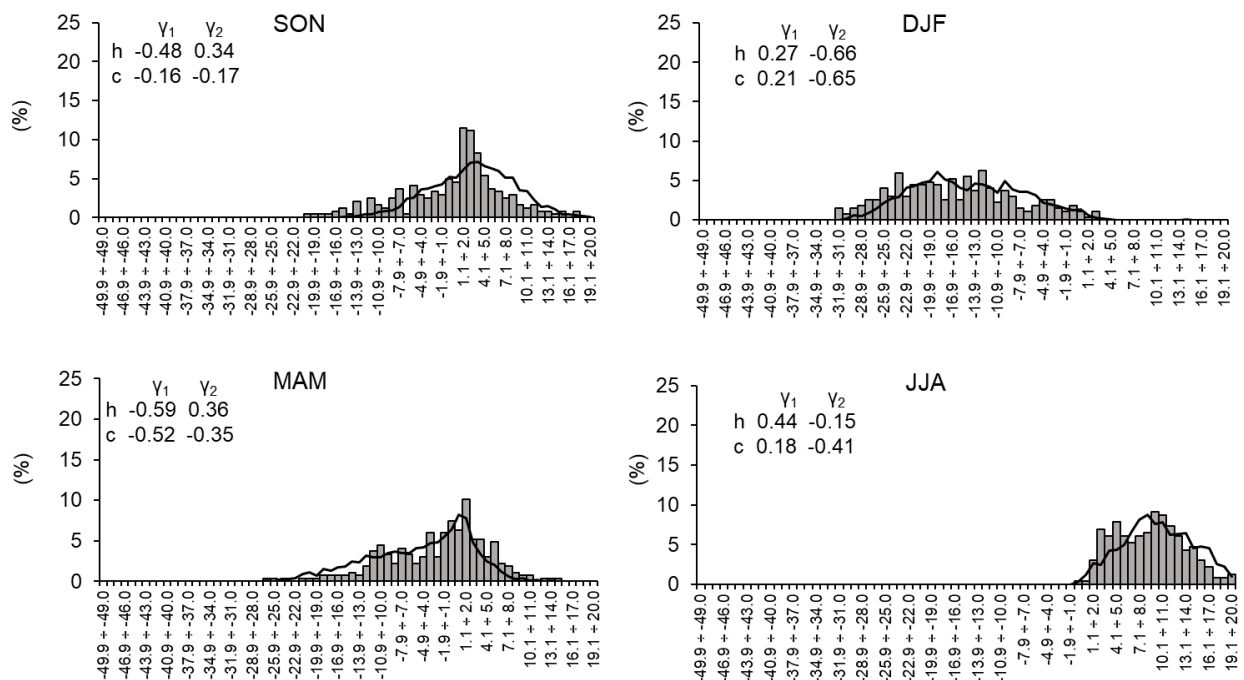
*Correspondence to:* Garima Singh ([garima.singh@doktorant.umk.pl](mailto:garima.singh@doktorant.umk.pl))

The copyright of individual parts of the supplement might differ from the article licence.

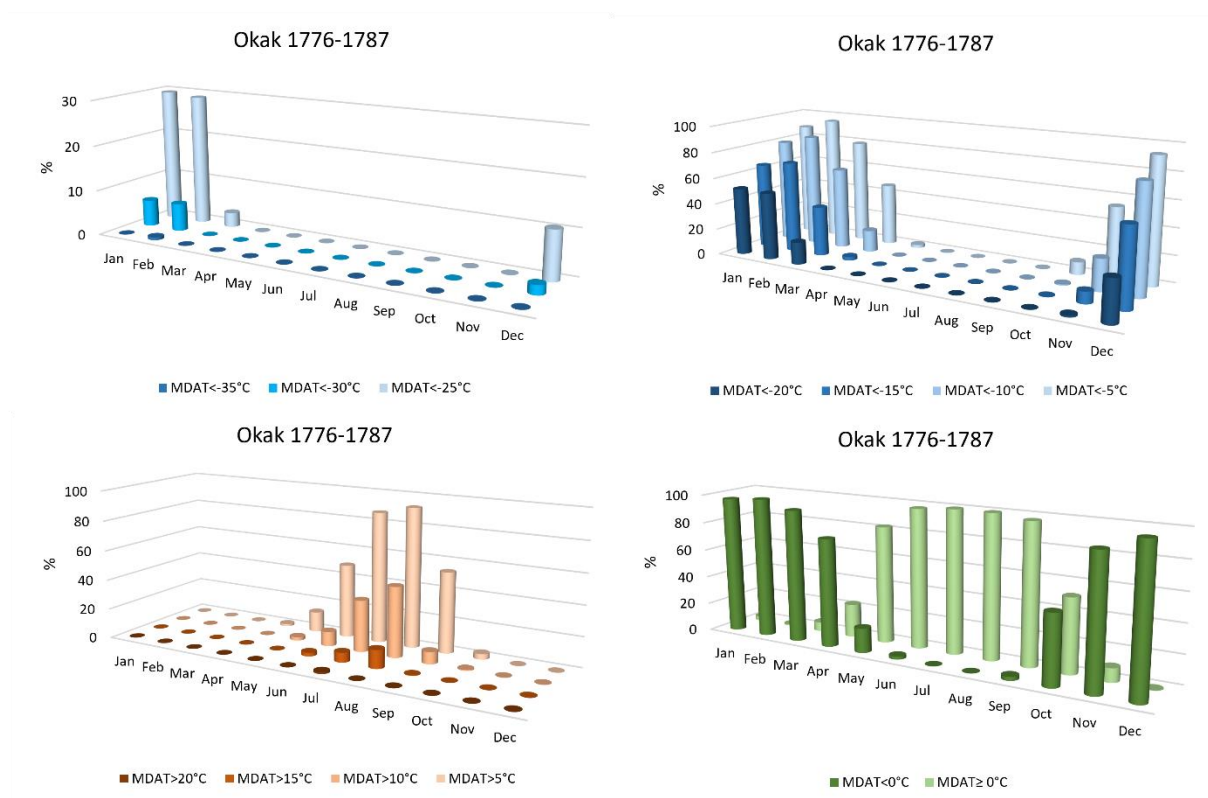
## Supplement materials:



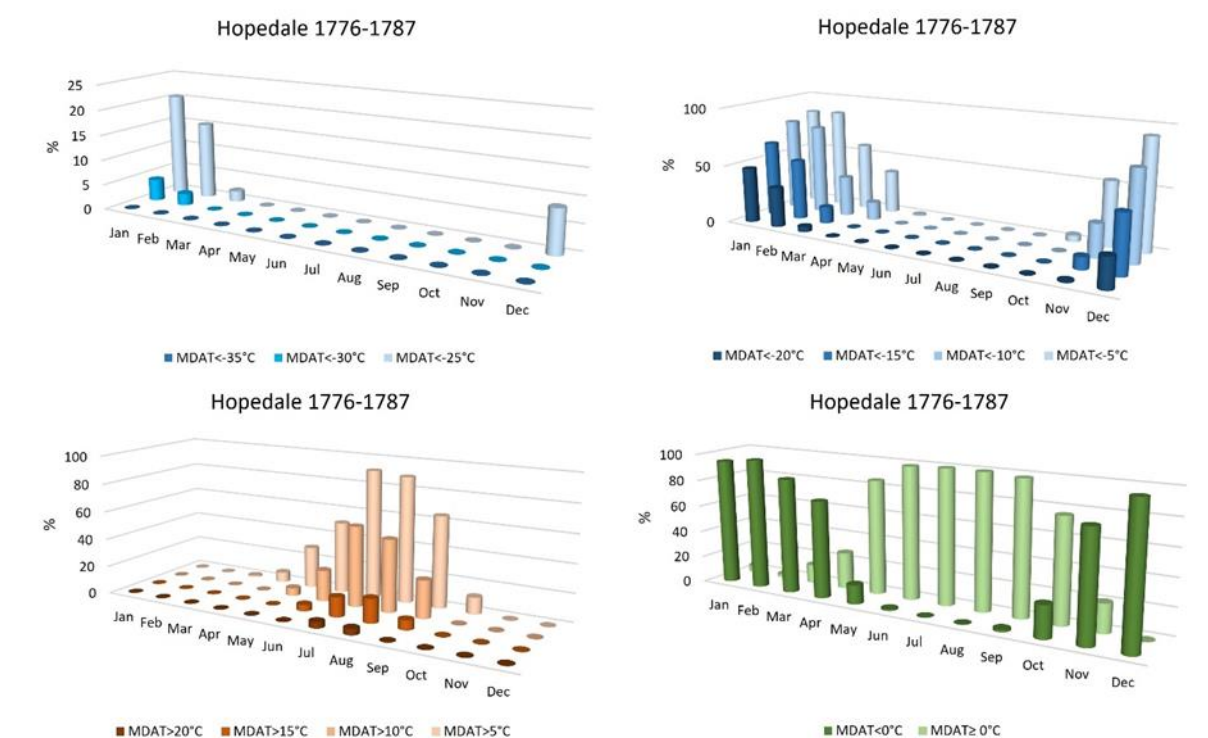
5 **Figure S1.** Seasonal (Sep–Nov, Dec–Feb, etc.) relative frequencies of occurrence (in %) of MDAT in historical (bars) and modern (lines) sites located in Okak 1776-87 and Sep 1990 – Aug 2020. Values of skewness ( $\gamma_1$ ) and kurtosis ( $\gamma_2$ ) for historical (h) and contemporary (c) times are also shown.



10 **Figure S2:** Seasonal (Sep–Nov, Dec–Feb., etc.) relative frequencies of occurrence (in %) of MDAT in historical (bars) and modern (lines) sites located in Hopedale 1782–86 and 1990–2020. Values of skewness ( $\gamma_1$ ) and kurtosis ( $\gamma_2$ ) for historical (h) and contemporary (c) times are also shown.



15 **Figure S3.** Annual courses of relative frequency of occurrence (in %) of characteristic days in Okak in historical time.



**Figure S4.** Annual courses of relative frequency of occurrence (in %) of characteristic days in Hopedale in historical time.

