



Supplement of

Strong wind occurrence in Poland from the 13th to 16th centuries based on documentary evidence

Rajmund Przybylak et al.

Correspondence to: Przemysław Wyszyński (przemyslaw.wyszynski@umk.pl)

The copyright of individual parts of the supplement might differ from the article licence.

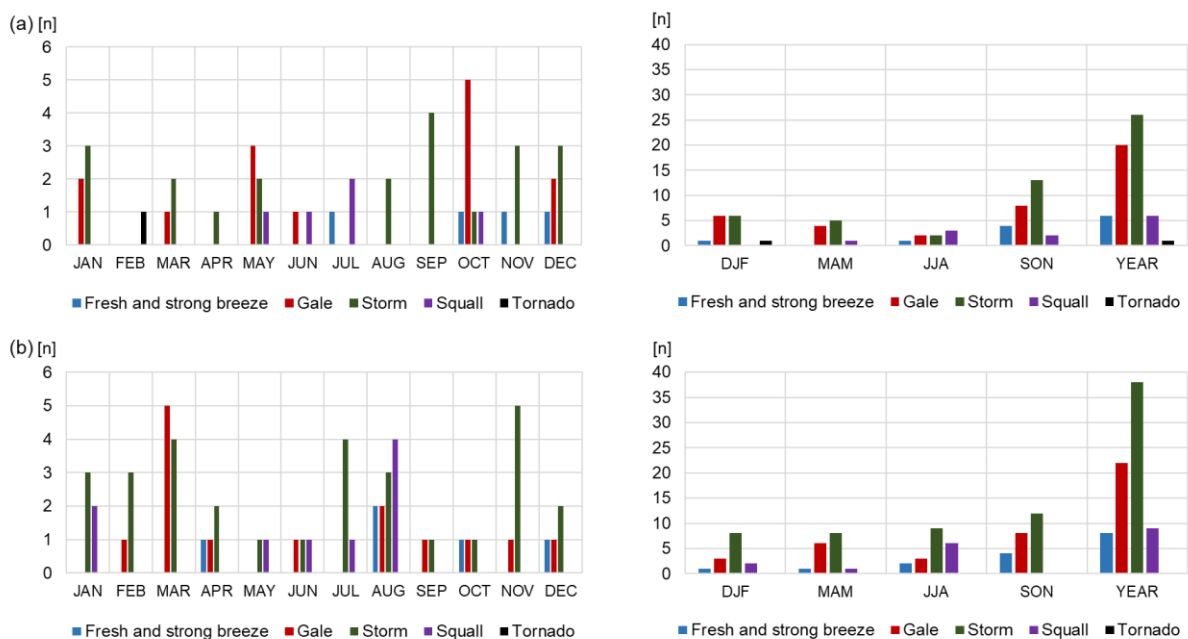


Fig. S1. Monthly (left column) and seasonal (right column) number (n) of occurrences of different types of strong winds in Poland in three periods: a) 1281–1500, b) 1501–1600

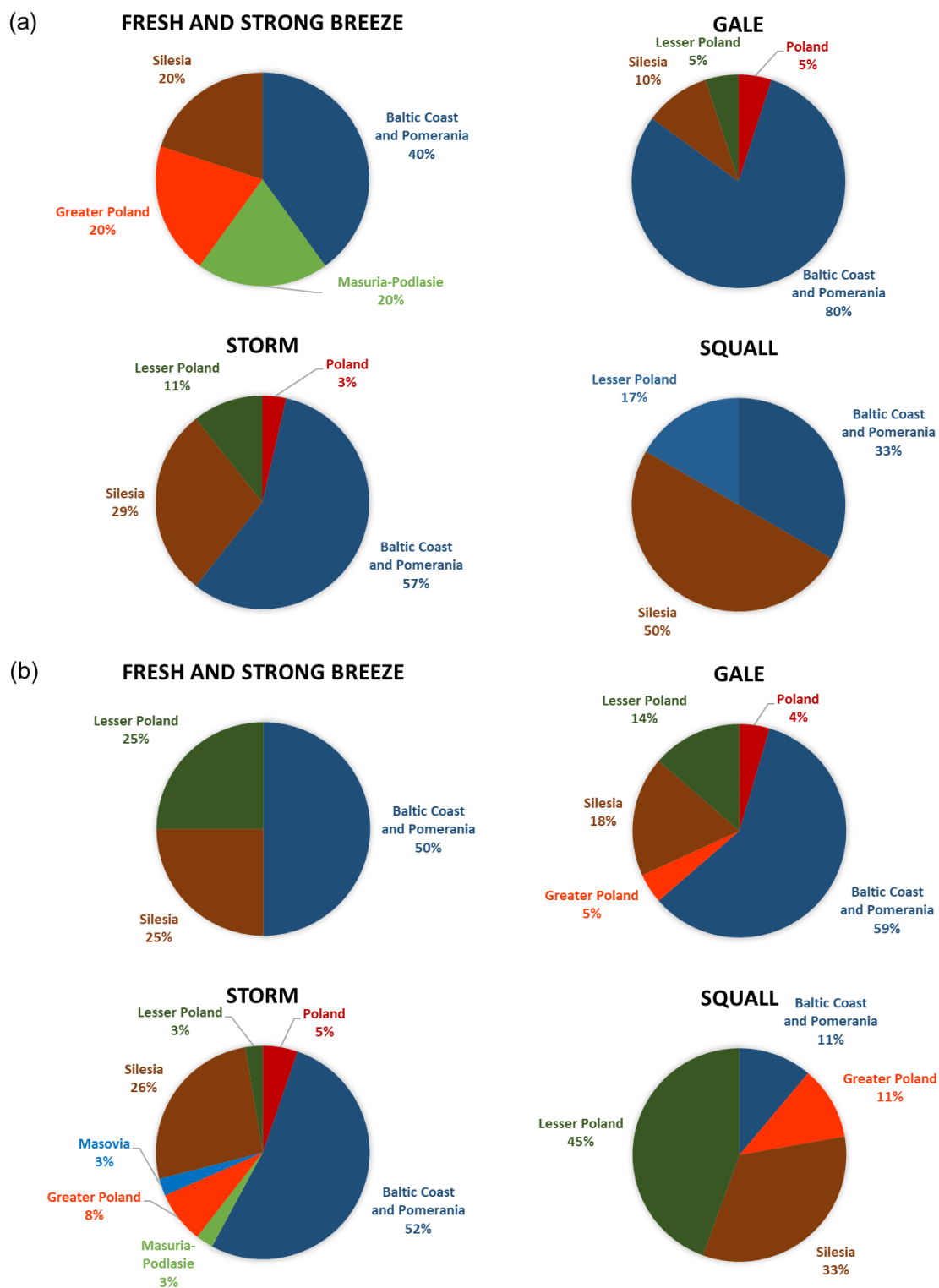


Fig. S2. Frequencies (%) of occurrence of different types of strong winds in studied regions of Poland, a) 1281–1500, b) 1501–1600

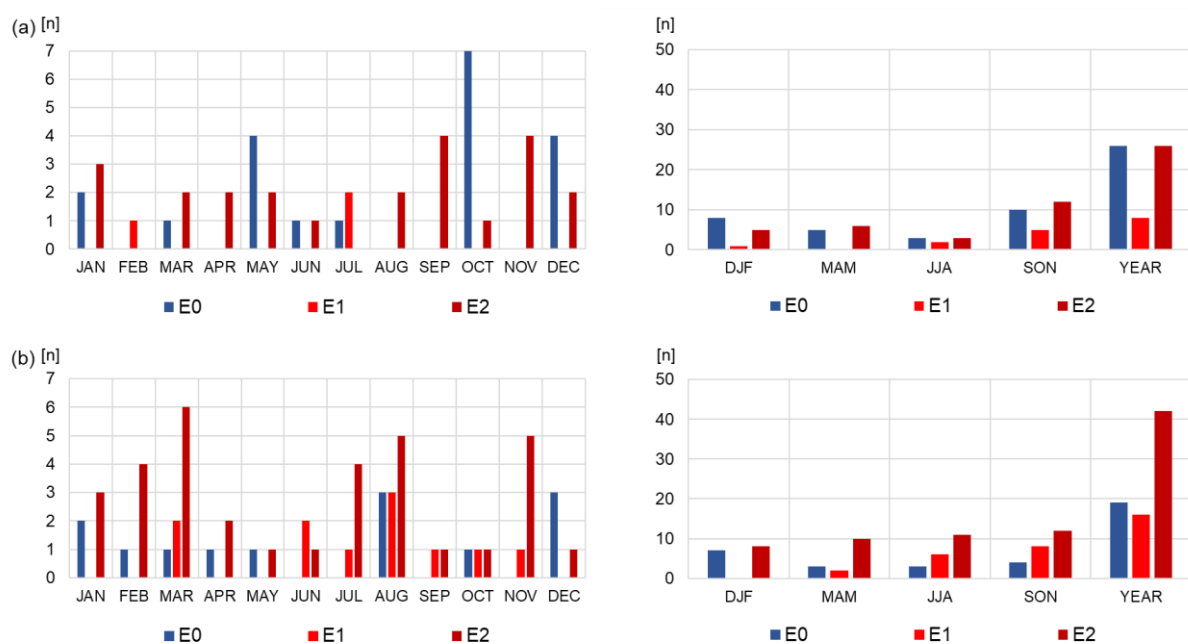


Fig. S3. Monthly (left panel) and seasonal (right panel) numbers (n) of occurrence of strong winds in Poland, according to extent of damage, a) 1281–1500, b) 1501–1600. For explanations of abbreviations, see Methods.

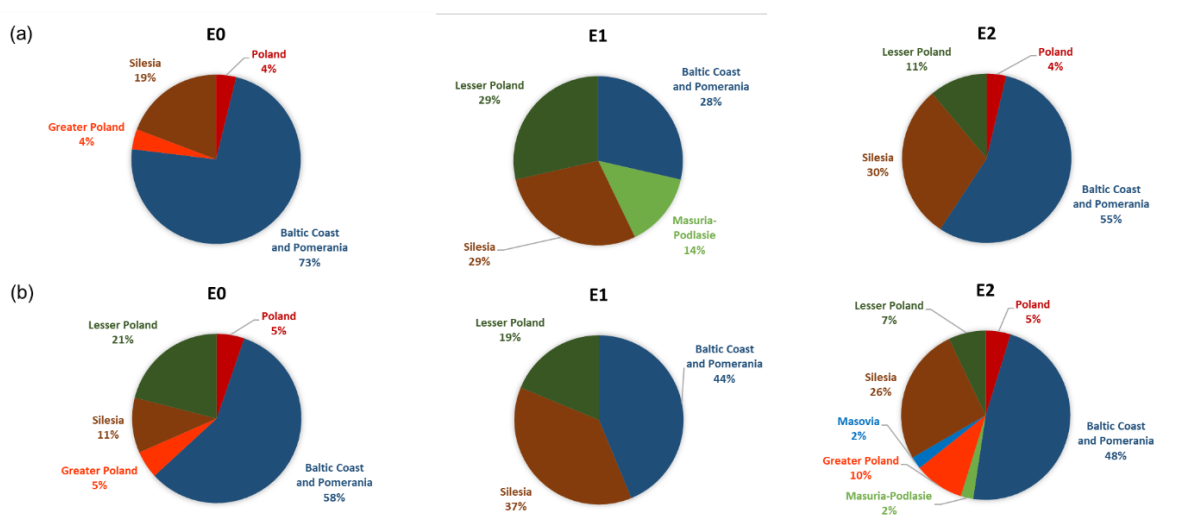


Fig. S4. Frequencies (%) of occurrence of strong winds in studied regions of Poland for different types of damage, a) 1281–1500, b) 1501–1600. For explanations of abbreviations, see Methods.

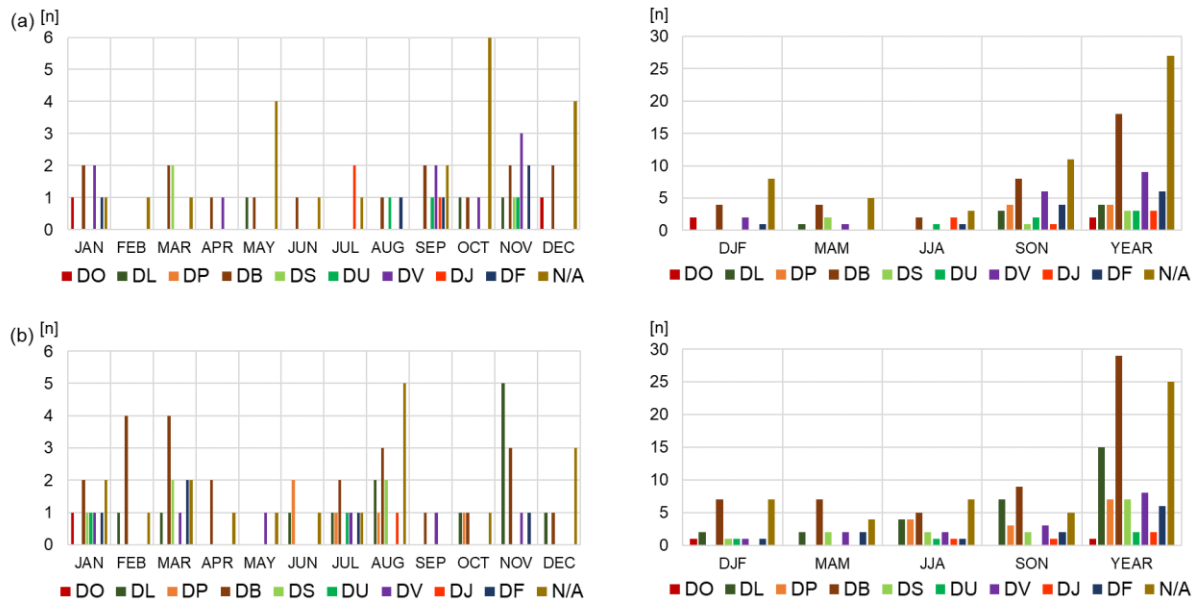


Fig. S5. Monthly, seasonal and annual number (n) of strong winds in Poland for which information about the character of damage exists (DO, DL, DP, DB, DS., DU, DV, DJ and DF) or does not exist (N/A), a) 1281–1500, b) 1501–1600. For explanations of abbreviations, see Methods.

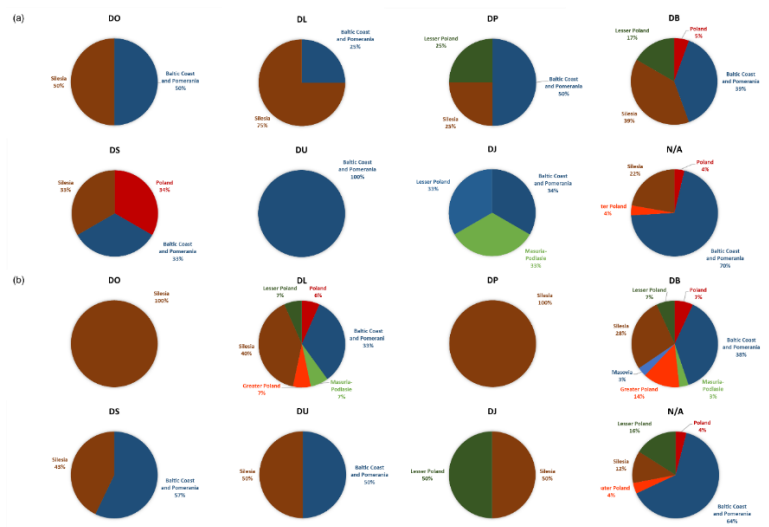


Fig. S6. Frequency (%) of damage categories estimated for particular regions in Poland in the periods: a) 1281–1500 and b) 1501–1600. Explanations: Two categories (DV and DF) are not shown because they can occur only in the Baltic Coast and Pomerania region. For explanations of abbreviations, see Methods.

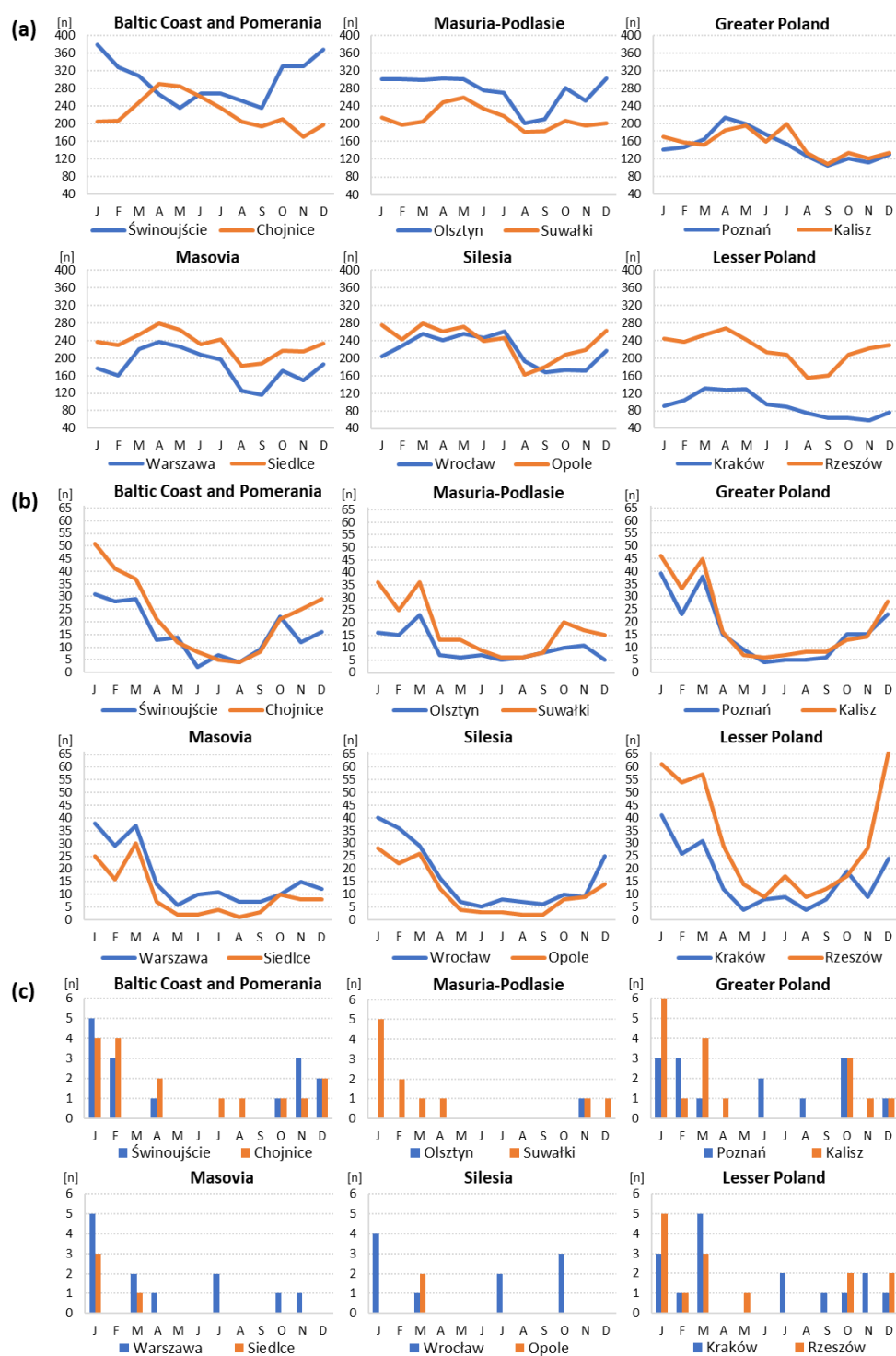


Fig. S7. Annual courses of 30-year total monthly number (n) of: a) fresh and strong breeze (5–7 BS), b) gales (8–9 BS), and c) storms (10–12 BS) in Poland, 1993–2022