



Supplement of

Holocene environmental and climate evolution of central west Patagonia as reconstructed from lacustrine sediments of Meseta Chile Chico (46.5° S, Chile)

Carolina Franco et al.

Correspondence to: Carolina Franco (cafranco@uni-bremen.de)

The copyright of individual parts of the supplement might differ from the article licence.

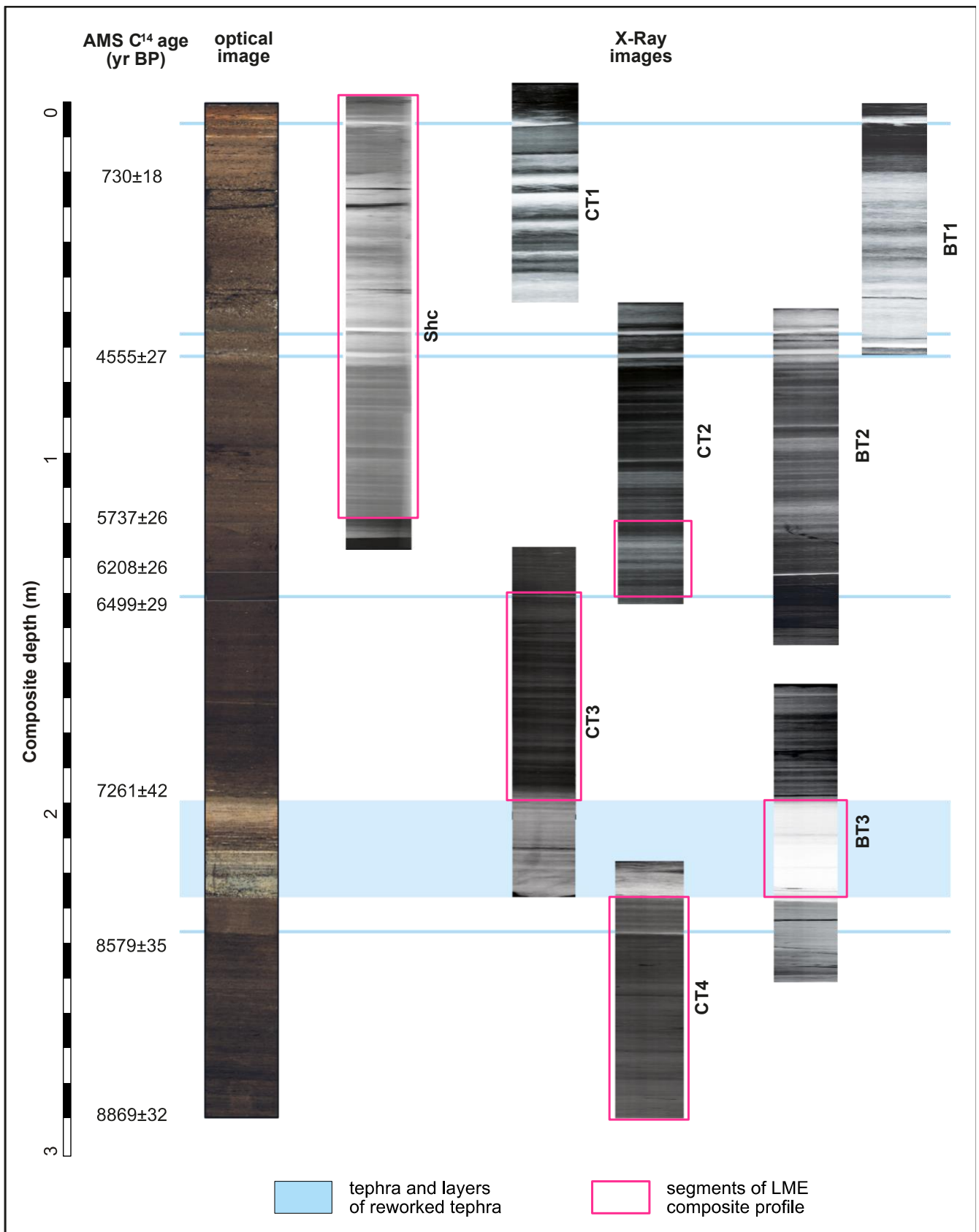


Figure S1 Radiocarbon ages and optical images of the composite sediment profile (left). X-ray images of all core sections with segments used for the composite profile highlighted (right). Shifts between composite sections were accomplished by using tephras as marker layers. Exceptionally, the boundary between sections Shc and CT2 was defined based on lithological changes.

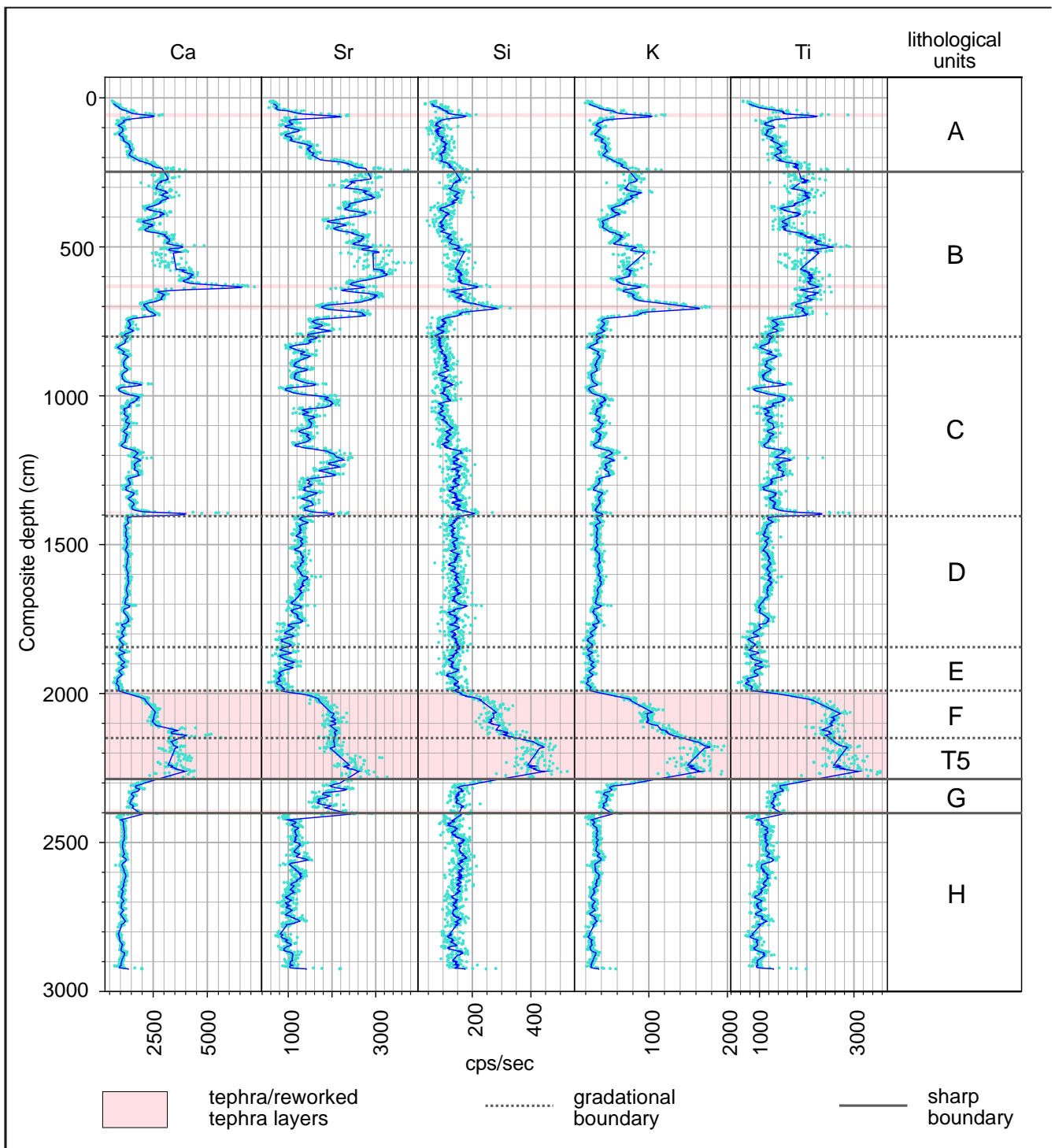


Figure S2: Main elemental components XRF data points (light blue dots), their running means (dark blue line) and lithological units of the composite sediment record are displayed vs depth. Running means were calculated with a moving window of 10 data points. Linear interpolation was used to fill data gaps. Cps: counts; sec: seconds.

10