



*Supplement of*

**BrGDGT-based seasonal paleotemperature reconstruction for  
the last 15 000 years from a shallow lake on the eastern  
Tibetan Plateau**

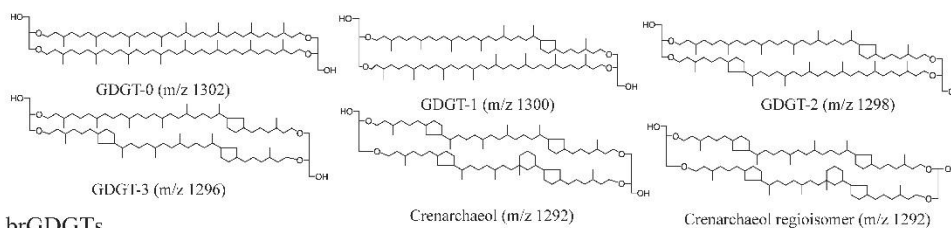
**Xiaohuan Hou et al.**

*Correspondence to:* Juzhi Hou ([houjz@itpcas.ac.cn](mailto:houjz@itpcas.ac.cn))

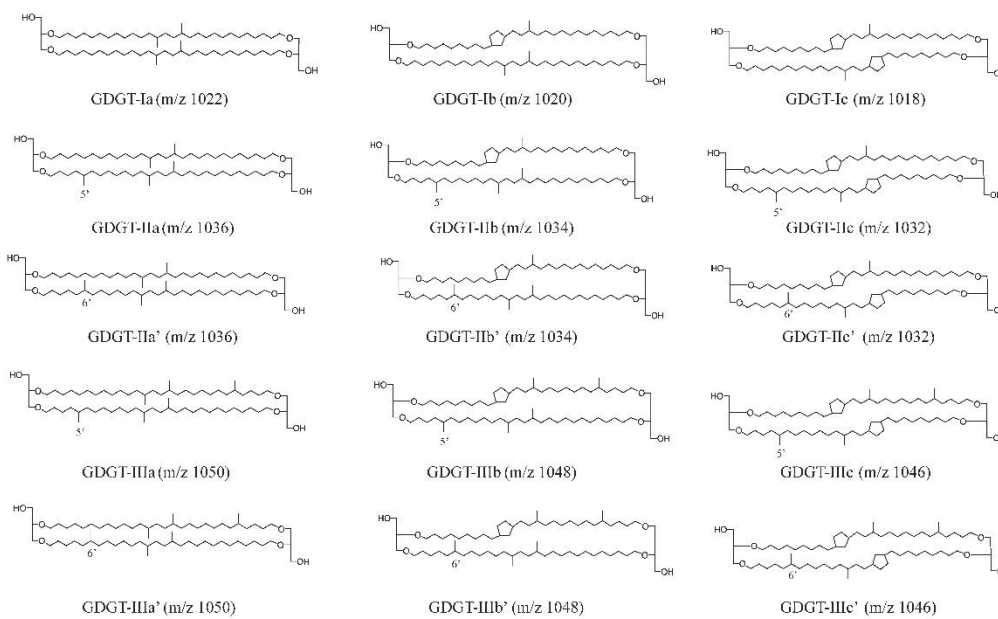
The copyright of individual parts of the supplement might differ from the article licence.

15 **Supplementary Figures**

iGDGTs

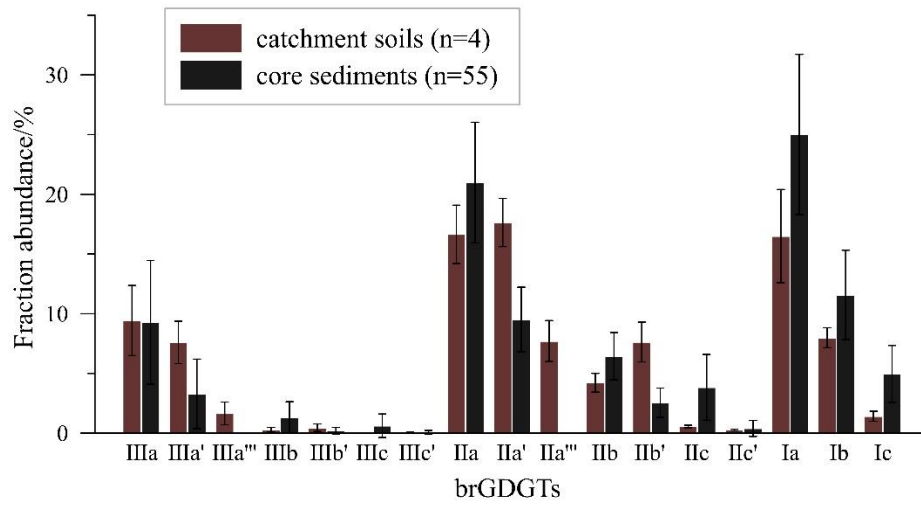


brGDGTs



16

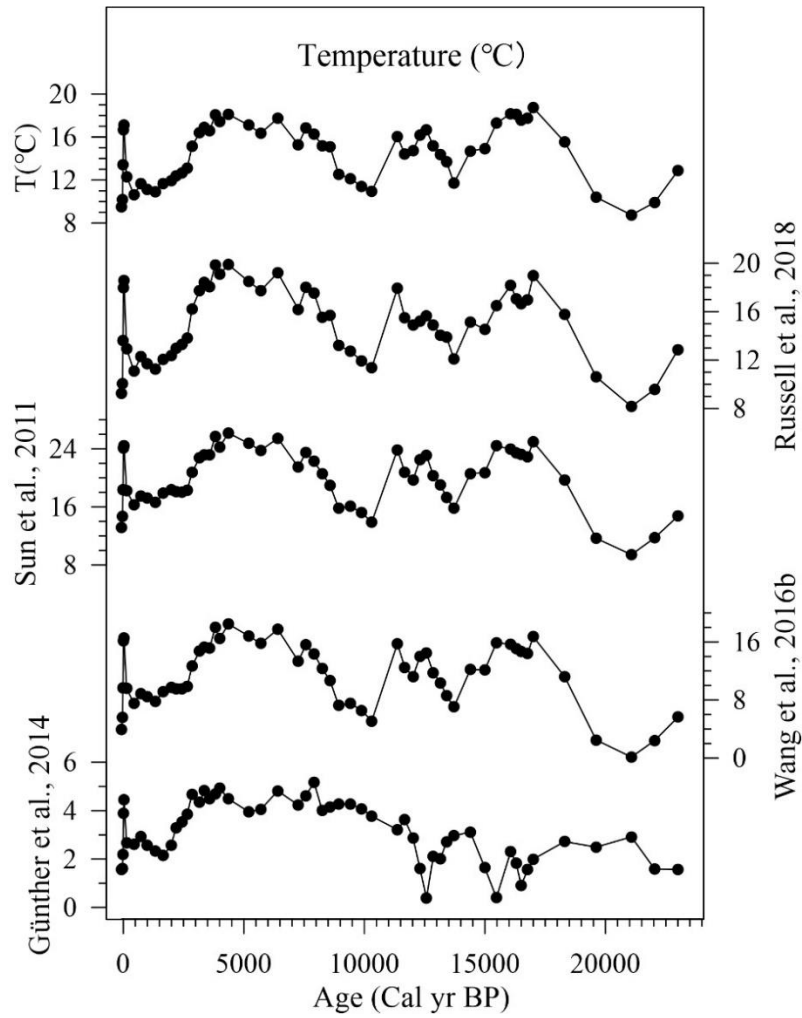
17 **Fig. S1 Molecular structures of GDGTs.**



18

19 Fig. S2 Mean fractional abundances and standard deviations of brGDGTs in the downcore sediments and

20 catchment soil samples at Gahai lake.



22

23 Fig. S3 Comparison of reconstructed MAAT records at Gahai lake based on different temperature  
 24 calibrations from lakes. a. Lines with the same color indicate a similar trend in the reconstructions. Red line  
 25 represents the MAF result using the calibration proposed by Martínez-Sosa et al. (2021) which is adopted in  
 26 this study.