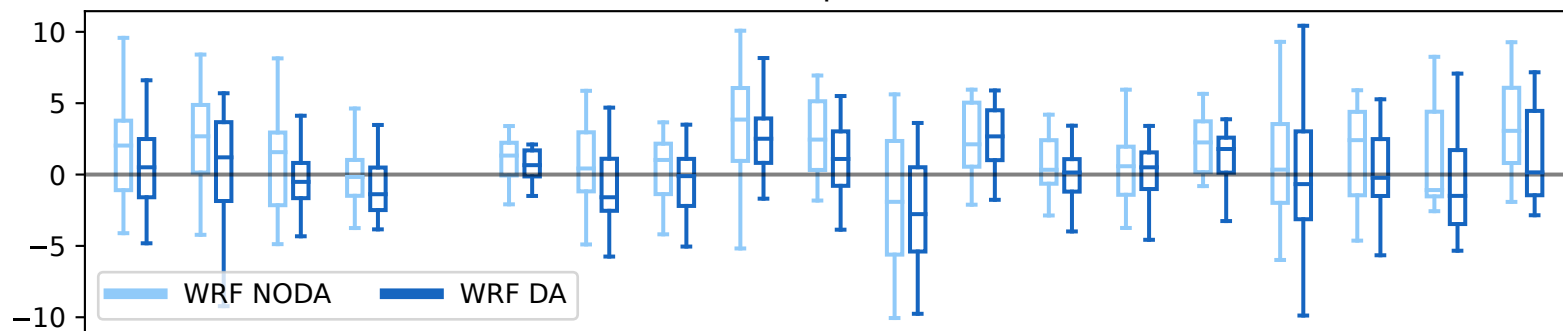


### 2m temperature

(a)



**all stations**

**median bias**

NODA: 1.28

DA: 0.27

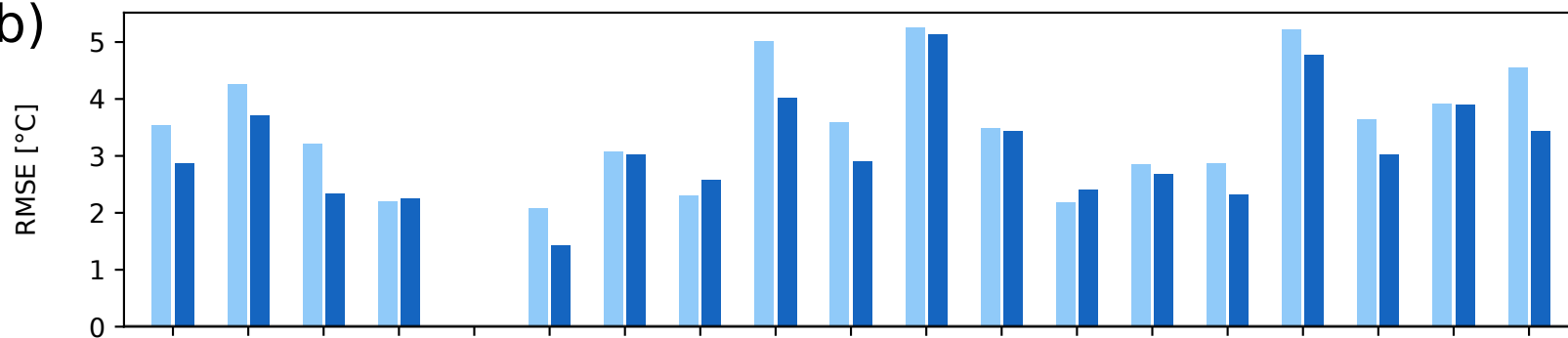
**independent stations**

**median bias**

NODA: 3.06

DA: 0.15

(b)



**all stations**

**RMSE**

NODA: 3.68

DA: 3.21

**independent stations**

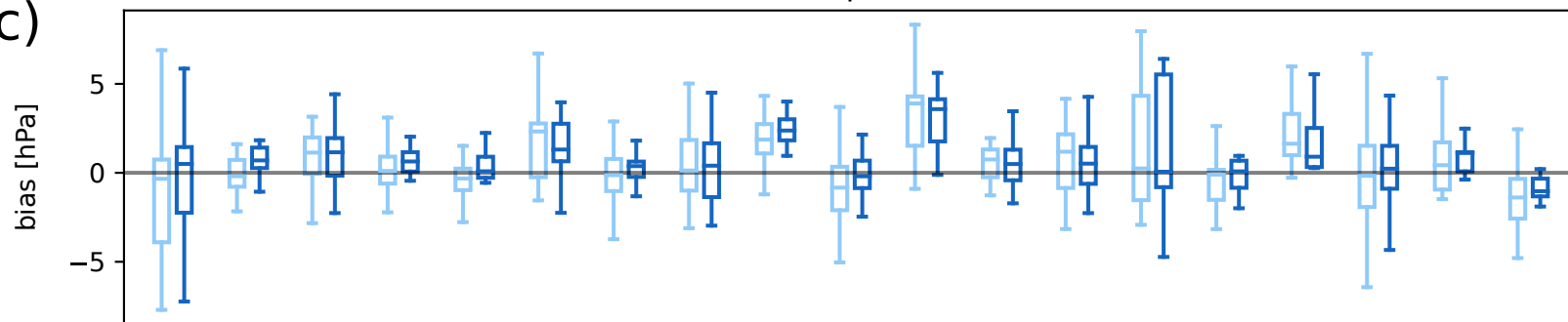
**RMSE**

NODA: 4.55

DA: 3.44

### surface pressure

(c)



**all stations**

**median bias**

NODA: 0.13

DA: 0.54

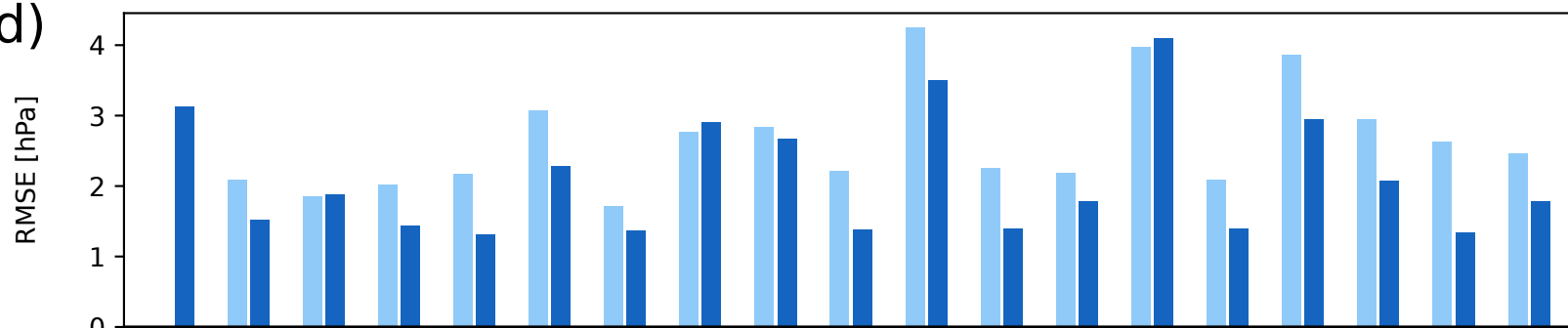
**independent stations**

**median bias**

NODA: -1.39

DA: -1.03

(d)



**all stations**

**RMSE**

NODA: 2.58

DA: 2.09

**independent stations**

**RMSE**

NODA: 2.46

DA: 1.78

Aarau  
Augsburg\*  
Avignon  
Bern (Studer)  
Bern (Fueter)\*  
Bologna  
Delemont\*  
Geneva  
Hohenpeissenberg  
Karlsruhe  
Marschlins  
Milan  
Padua  
Rovereto  
St. Gall  
Turin  
Vevey  
Zurich (Escher)  
Zurich (Feer)\*