



Supplement of

Air temperature changes in SW Greenland in the second half of the 18th century

Rajmund Przybylak et al.

Correspondence to: Przemysław Wyszyński (przemyslaw.wyszynski@umk.pl)

The copyright of individual parts of the supplement might differ from the article licence.

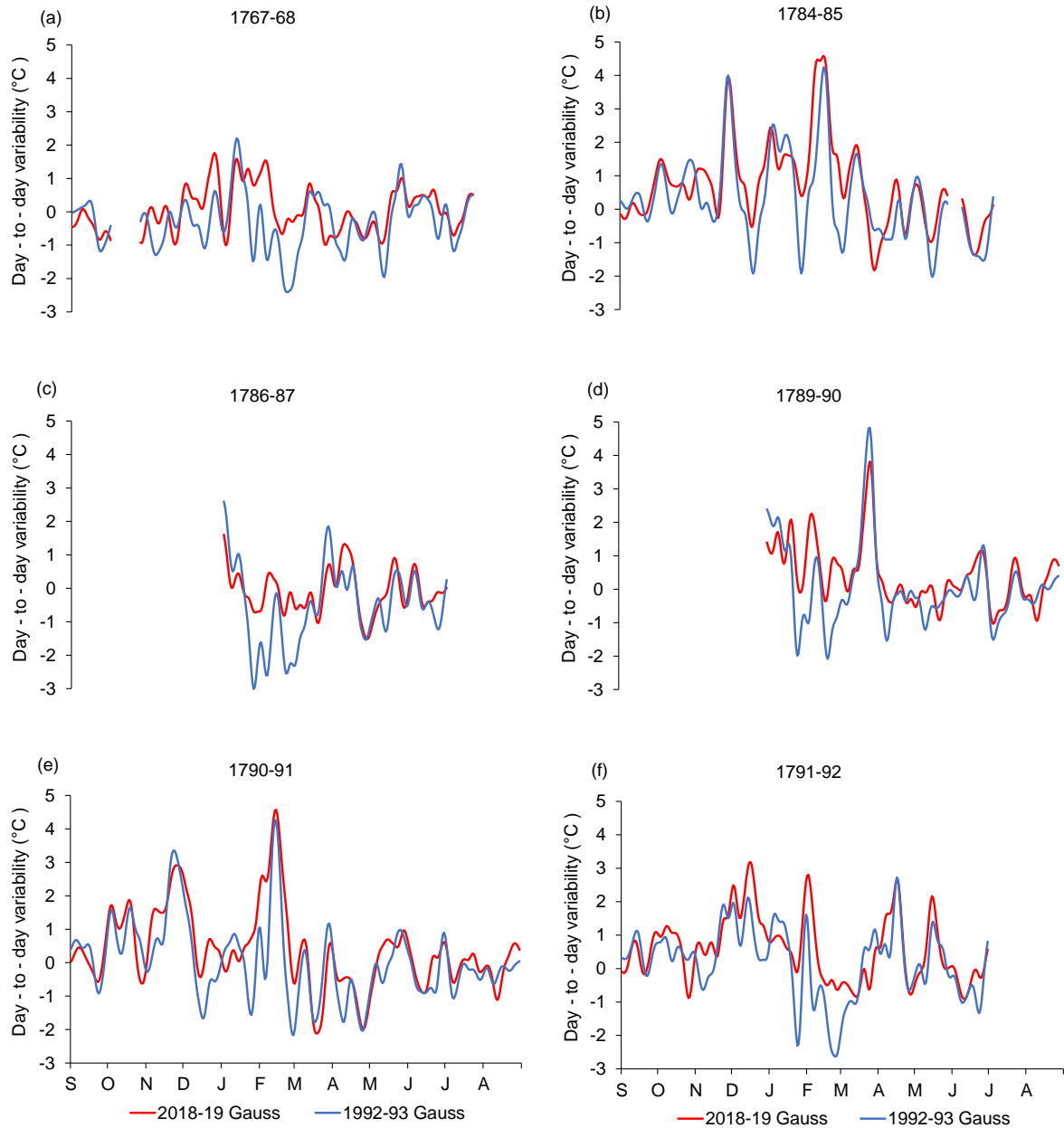


Fig. S1. Smoothed series of differences in DDTV between historical and contemporary periods for Nuuk (for present, the two years selected were 1992-93 [cold] and 2018-19 [warm]). Individual days were filtered by a Gaussian low-pass filter with a standard deviation of three days in its distribution, corresponding to a rectangular filter of about 10 days.