



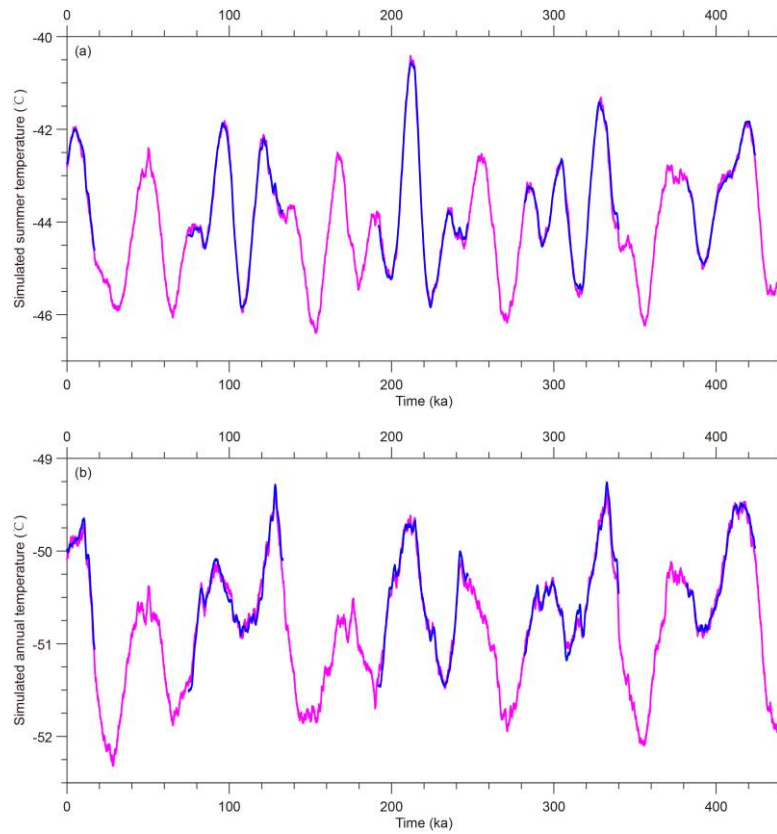
Supplement of

Local summer temperature changes over the past 440 ka revealed by the total air content in the Antarctic EPICA Dome C ice core

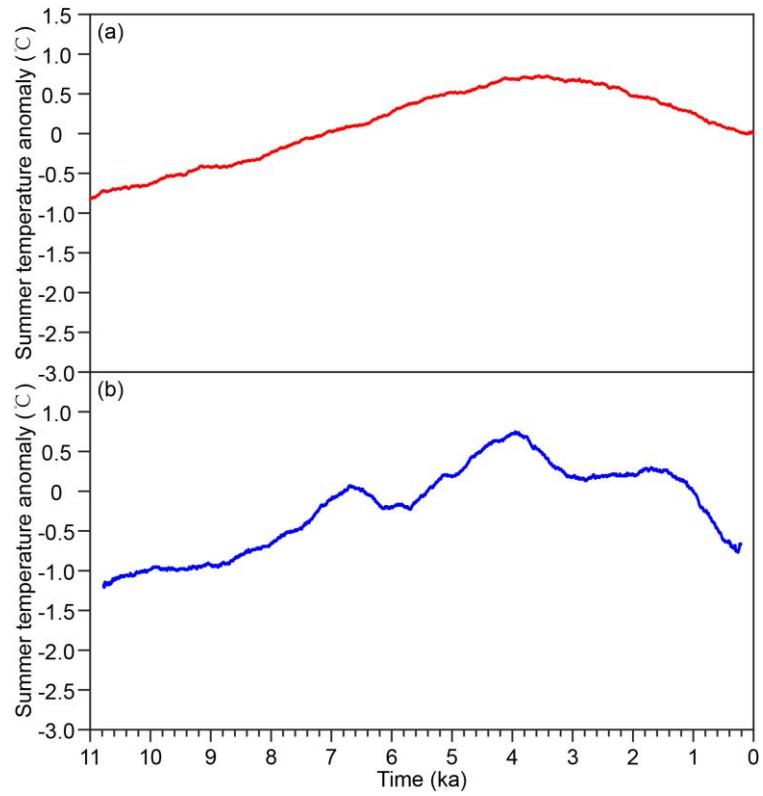
Dominique Raynaud et al.

Correspondence to: Dominique Raynaud (dominique.raynaud2@univ-grenoble-alpes.fr)
and Emilie Capron (emilie.capron@univ-grenoble-alpes.fr)

The copyright of individual parts of the supplement might differ from the article licence.



Supplementary Figure S1. Comparison of 10x accelerated (purple) and non-accelerated (blue) simulations for the simulated mean half-year summer (October to March) temperature (a) and mean annual temperature (b) at EDC. Both are OrbGHG simulations without considering ice sheet changes. 1000-year running mean is plotted.



Supplementary Figure S2. Comparison of the simulated (a) and reconstructed (b) summer temperature anomaly at the site of West Antarctic Divide ice core (WDC). The simulated result is from the OrbGHGIce transient simulation using LOVECLIM1.3, the reconstructed data is from Jones et al. (2023).