



Supplement of

Extratropical circulation associated with Mediterranean droughts during the Last Millennium in CMIP5 simulations

Woon Mi Kim et al.

Correspondence to: Woon Mi Kim (wmikim@ucar.edu)

The copyright of individual parts of the supplement might differ from the article licence.

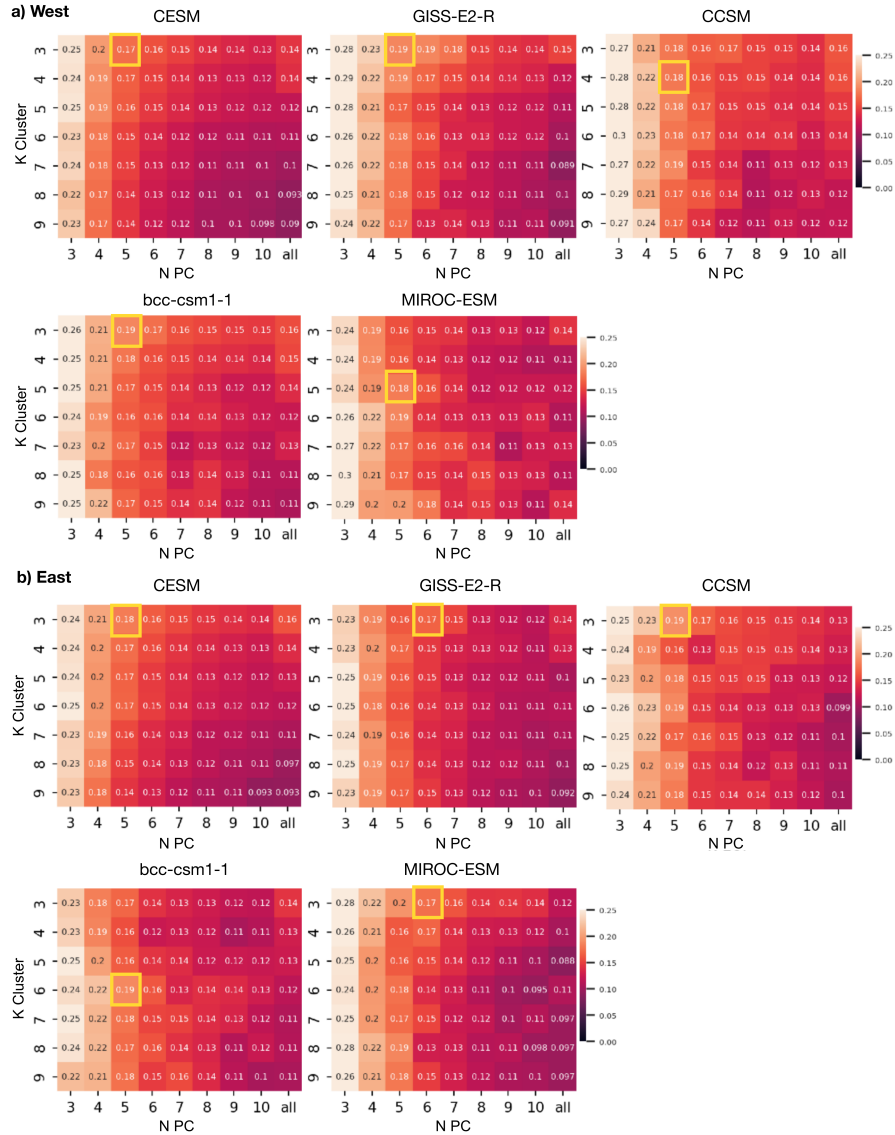


Figure S1. Silhouette coefficients (S) for a range of N for PC and k for KCA for the LM simulations (a) in the western and (b) eastern Mediterranean. Chosen S is highlighted with a yellow box. *All* indicates the dataset before PCA is applied.

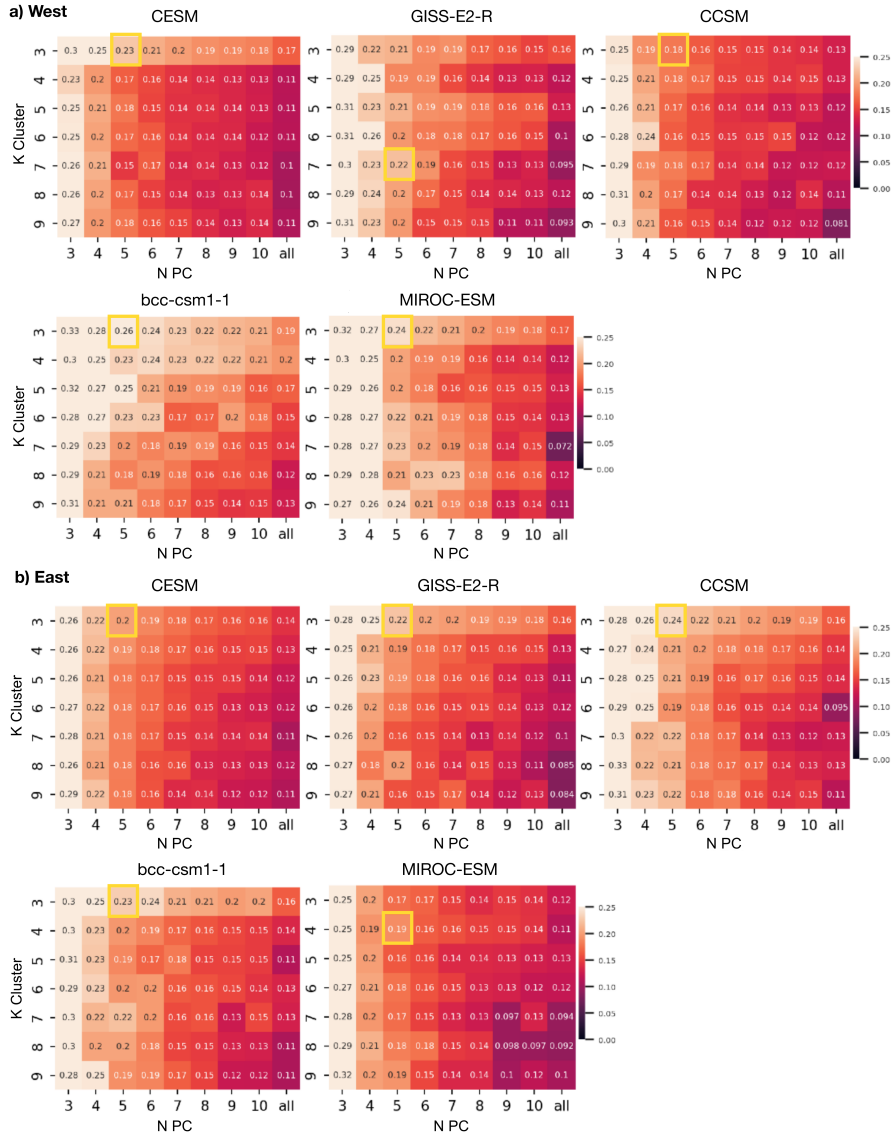


Figure S2. Same as Fig S1 but for the Hist simulations.

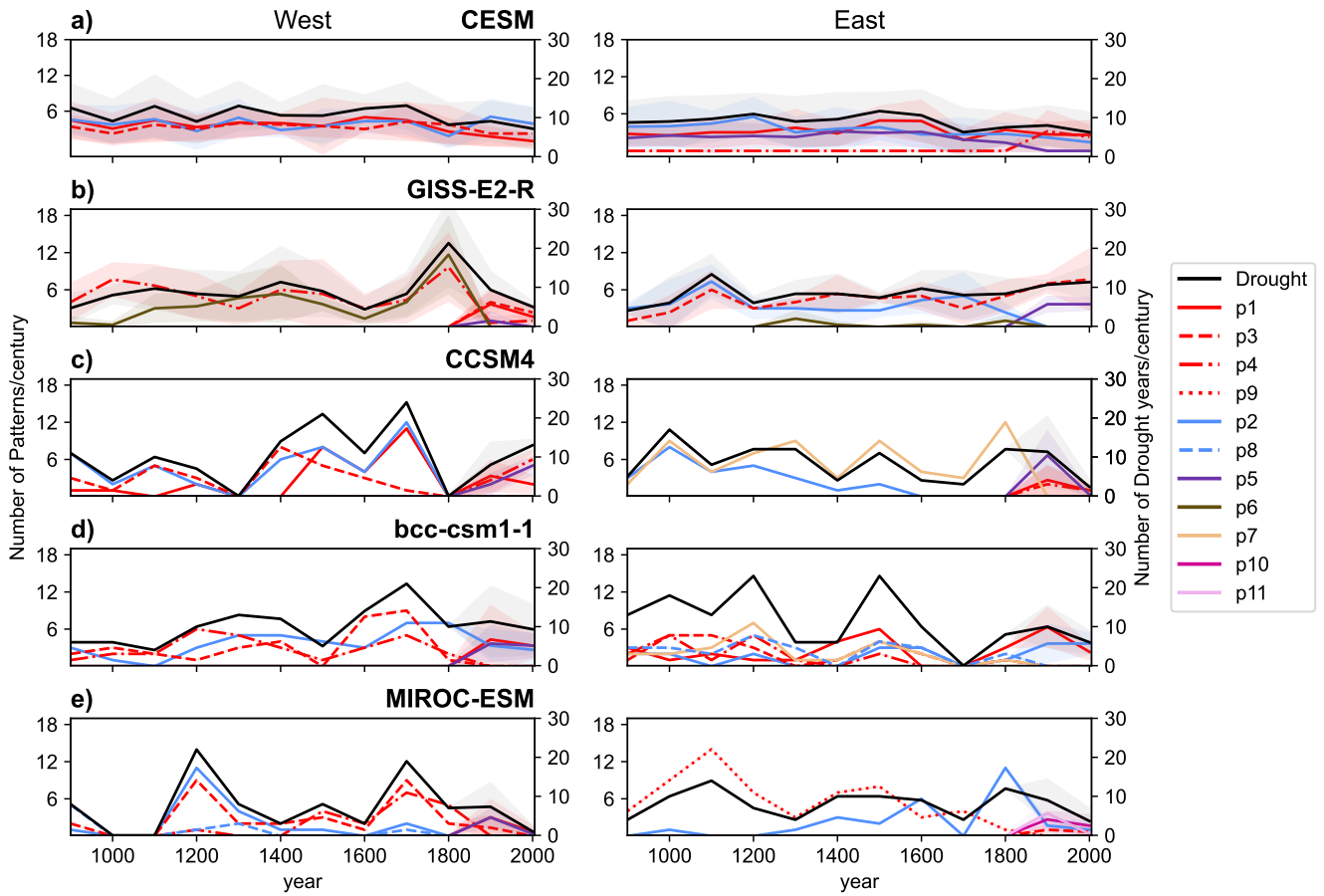


Figure S3. Extended version of Fig. 7: occurrence of each pattern group every century for each climate model.