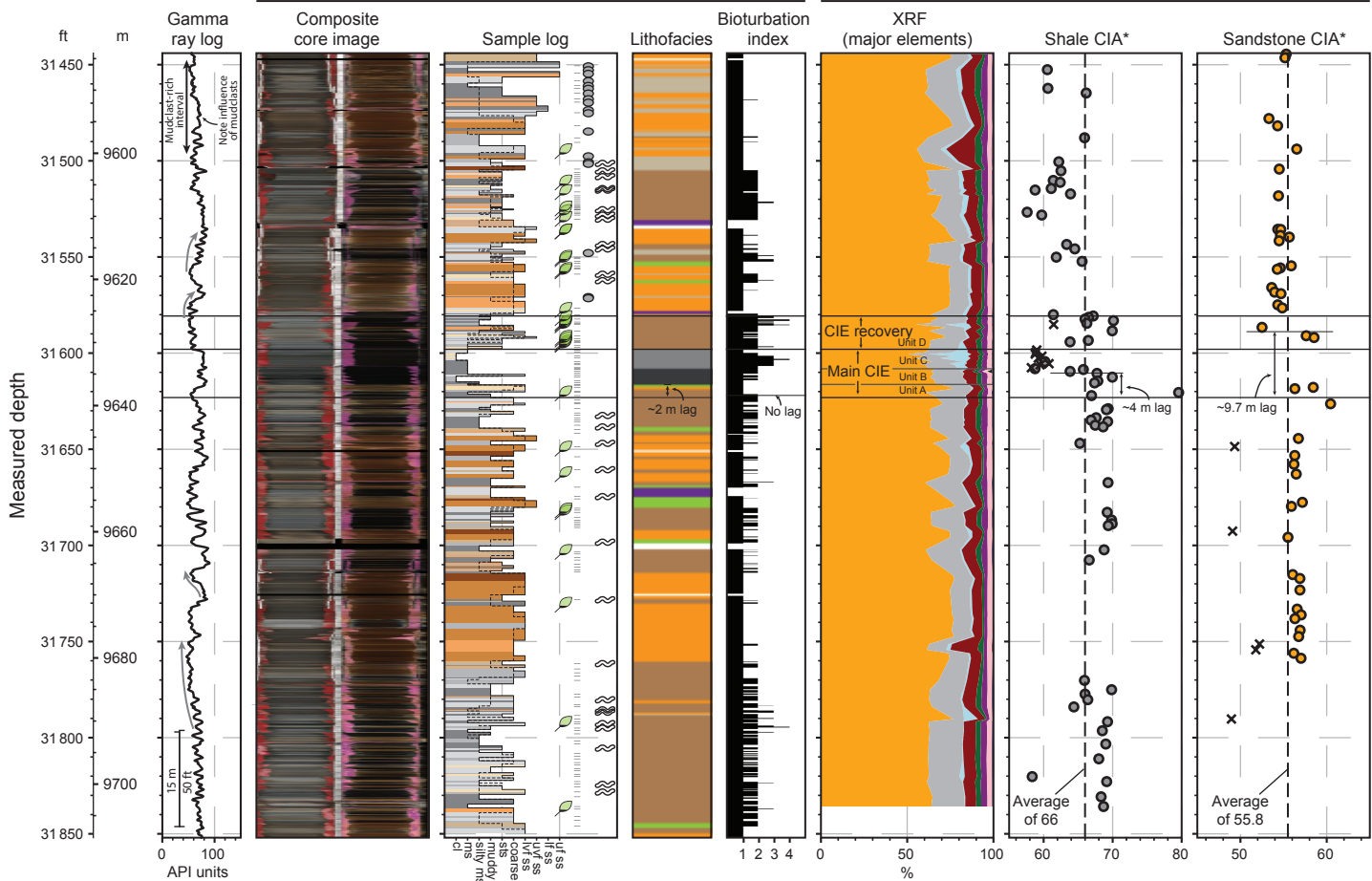


Core description

Geochemistry



Sample log key

- Organic debris
- Laminations
- Mudclasts
- Bioturbation

Lithofacies key

- LF-1a
- LF-1b
- LF-2
- LF-3
- LF-4
- LF-5
- LF-6

XRF key

- SiO₂
- Al₂O₃
- CaO
- Fe₂O₃
- MgO
- K₂O
- Na₂O
- Mn₂O₄
- P₂O₅
- TiO₂