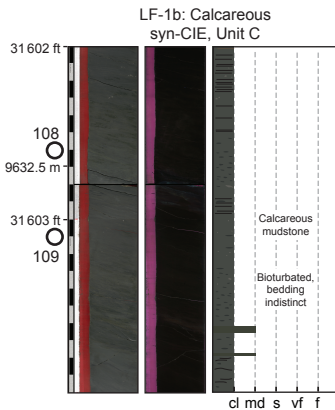
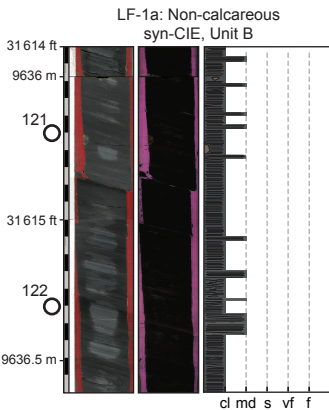
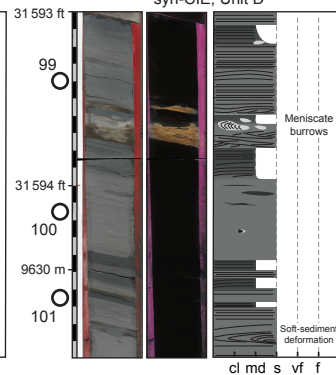


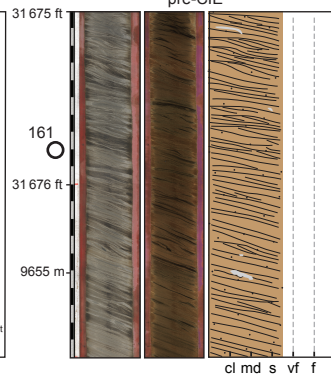
LF-1: Organic-lean claystone and marlstone with subordinate interbedded siltstone and rare sandstone



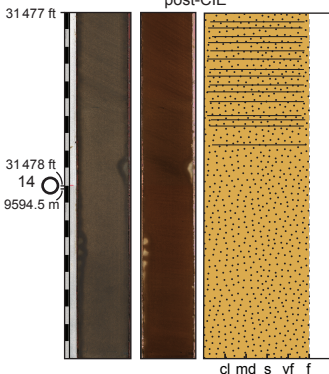
LF-2: Thinly to moderately bedded mudstone and siltstone, with lesser thinly bedded sandstone



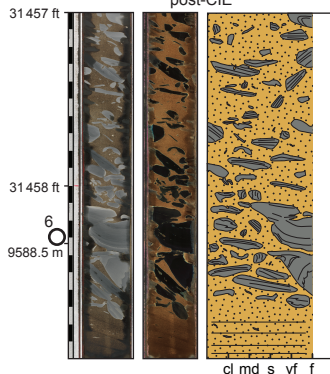
LF-3: Thinly to moderately bedded siltstone and sandstone, with lesser mudstone



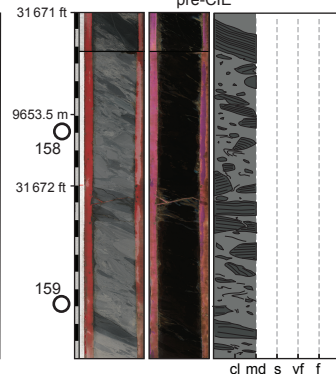
LF-4: Moderately to thickly bedded coarse siltstone and sandstone post-CIE



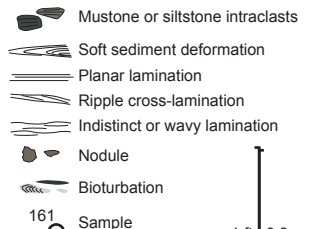
LF-5: Sand-matrix, mudclast conglomerate post-CIE



LF-6: Chaotically bedded units, dominantly mudstone pre-CIE



Key



1 ft 0.3 m