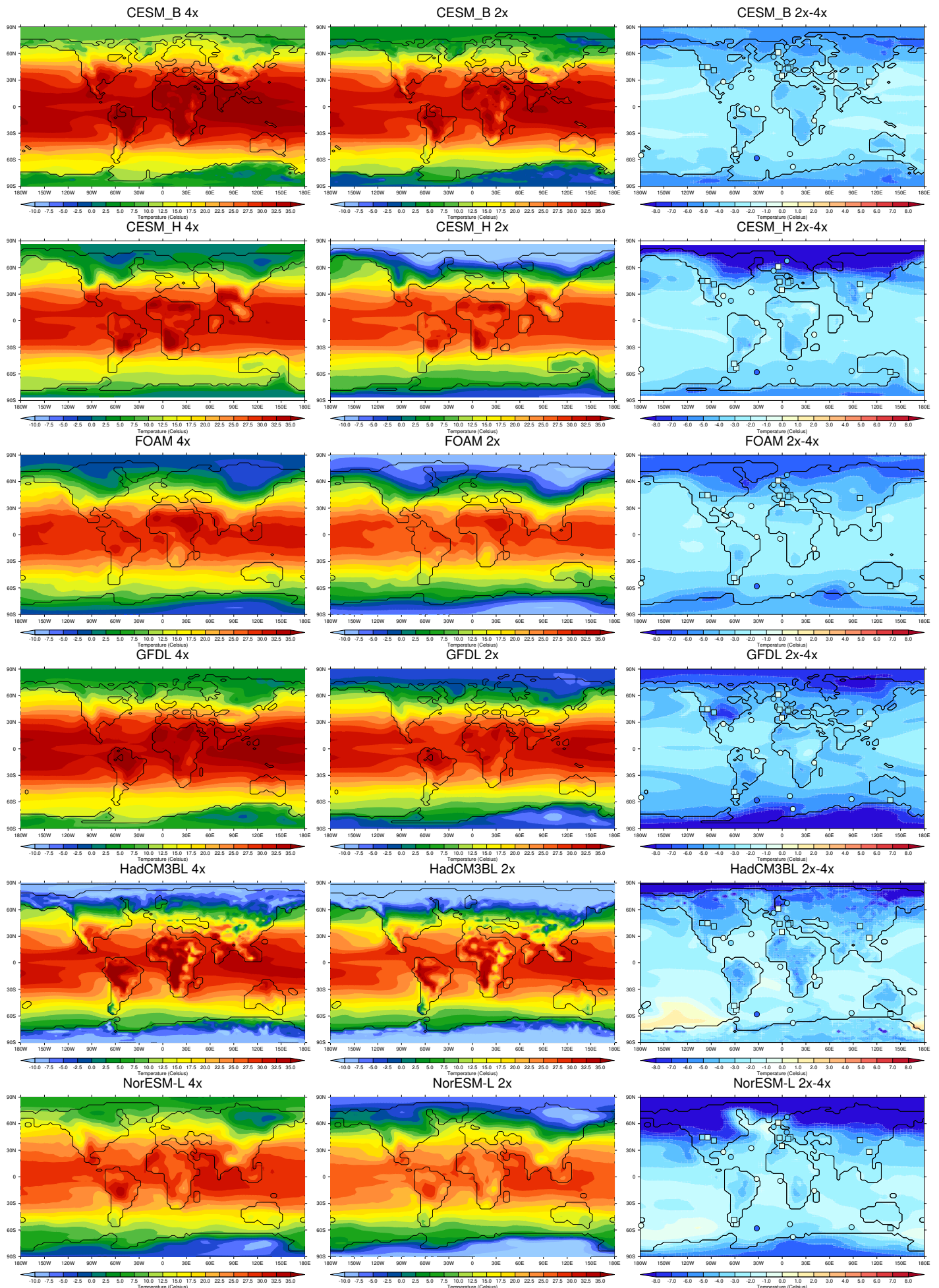


# Supplementary Figures for The Eocene-Oligocene transition: a review of marine and terrestrial proxy data, models and model-data comparisons

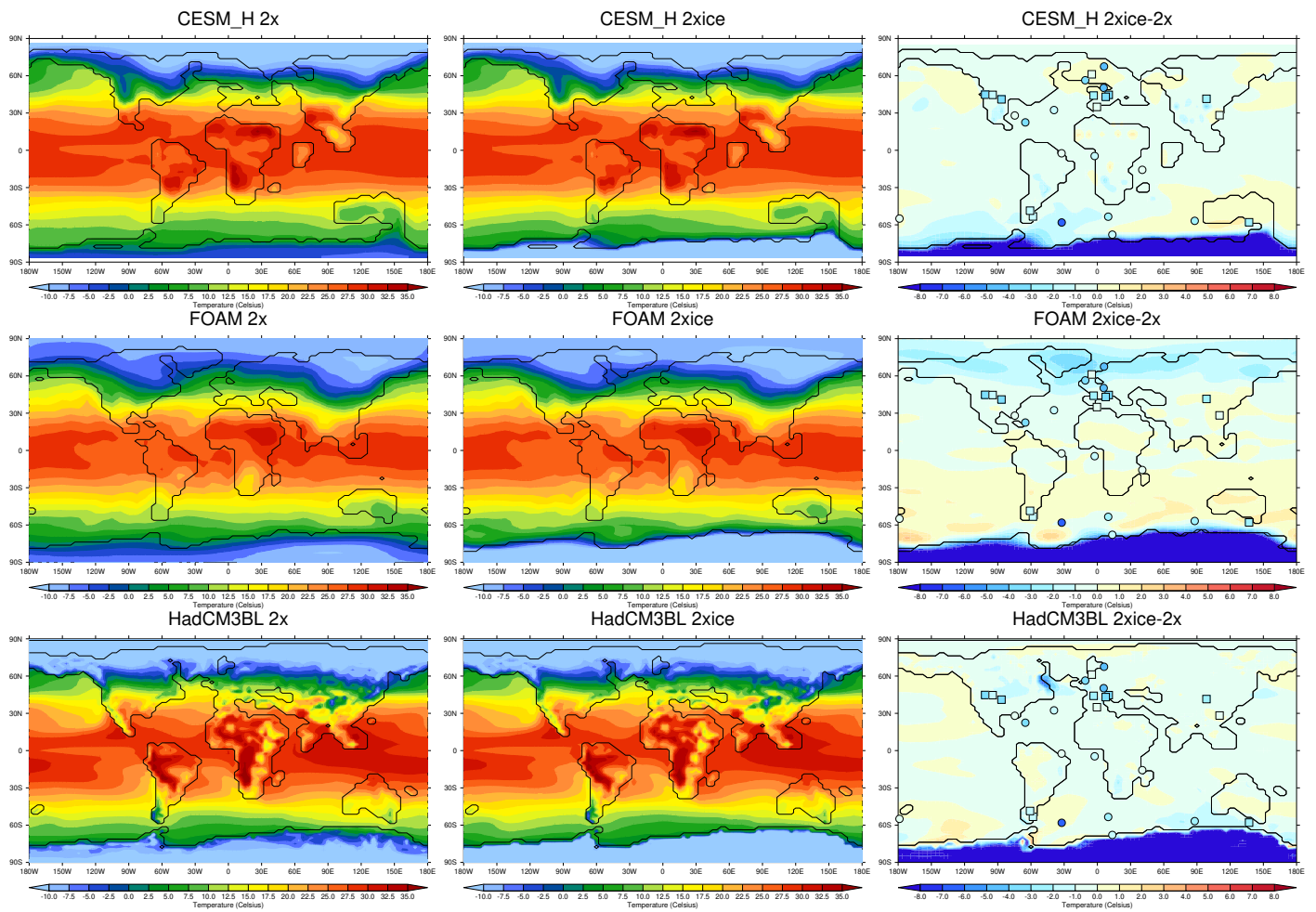
David K. Hutchinson<sup>1</sup>, Helen K. Coxall<sup>1</sup>, Daniel J. Lunt<sup>2</sup>, Margret Steinthorsdottir<sup>1,3</sup>, Agatha M. De Boer<sup>1</sup>, Michiel Baatsen<sup>4</sup>, Anna von der Heydt<sup>4,5</sup>, Matthew Huber<sup>6</sup>, Alan T. Kennedy-Asser<sup>2</sup>, Lutz Kunzmann<sup>7</sup>, Jean-Baptiste Ladant<sup>8</sup>, Caroline H. Lear<sup>9</sup>, Karolin Moraweck<sup>7</sup>, Paul N. Pearson<sup>9</sup>, Emanuela Piga<sup>9</sup>, Matthew J. Pound<sup>10</sup>, Ulrich Salzmann<sup>10</sup>, Howie D. Scher<sup>11</sup>, Willem P. Sijp<sup>12</sup>, Kasia K. Śliwińska<sup>13</sup>, Paul A. Wilson<sup>14</sup>, Zhongshi Zhang<sup>15,16</sup>

1. Department of Geological Sciences and Bolin Centre for Climate Research, Stockholm University, Stockholm, Sweden
2. School of Geographical Sciences, University of Bristol, UK
3. Department of Palaeobiology, Swedish Museum of Natural History, Stockholm, Sweden
4. Institute for Marine and Atmospheric Research, Department of Physics, Utrecht University, Utrecht, the Netherlands
5. Centre for Complex Systems Studies, Utrecht University, Utrecht, the Netherlands
6. Department of Earth, Atmospheric, and Planetary Sciences, Purdue University, West Lafayette, USA
7. Senckenberg Natural History Collections Dresden, Germany
8. Department of Earth and Environmental Sciences, University of Michigan, USA
9. School of Earth and Ocean Sciences, Cardiff University, Cardiff, UK
10. Department of Geography and Environmental Sciences, Northumbria University, UK
11. School of the Earth, Ocean and Environment, University of South Carolina, USA
12. Climate Change Research Centre, University of New South Wales, Sydney, Australia
13. Department of Stratigraphy, Geological Survey of Denmark and Greenland (GEUS), Copenhagen, Denmark
14. University of Southampton, National Oceanography Centre Southampton, UK
15. Department of Atmospheric Science, China University of Geoscience, Wuhan, China
16. NORCE Research and Bjerknes Centre for Climate Research, Bergen, Norway

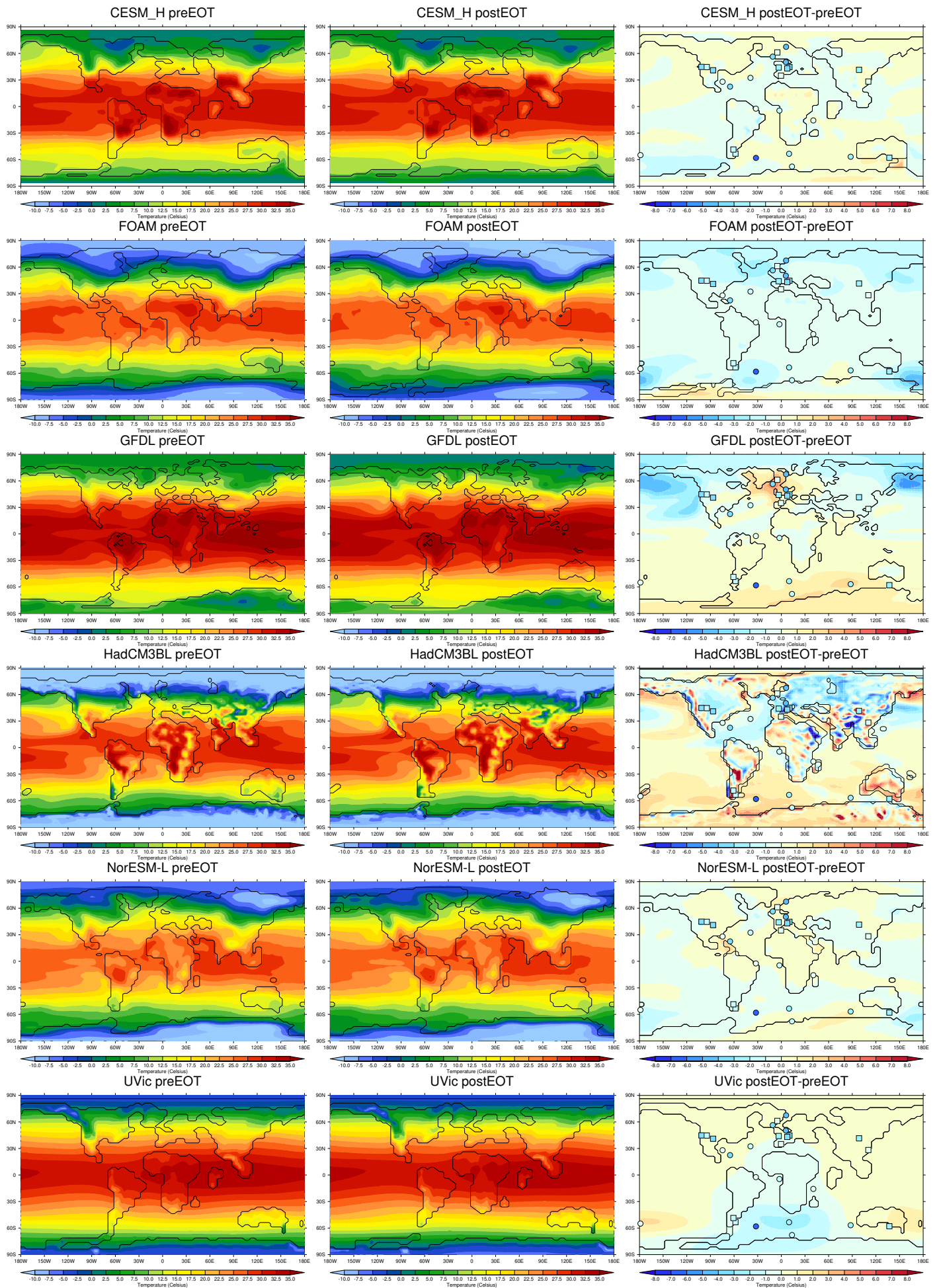
*Correspondence to:* David K. Hutchinson (david.hutchinson@geo.su.se)



**Figure S1:** Annual surface air temperature from individual model experiments of CO<sub>2</sub> forcing, showing the 4x (left column), 2x (middle column) experiments and the difference 2x-4x (right column). Model descriptions are given in Table 2 of the manuscript.

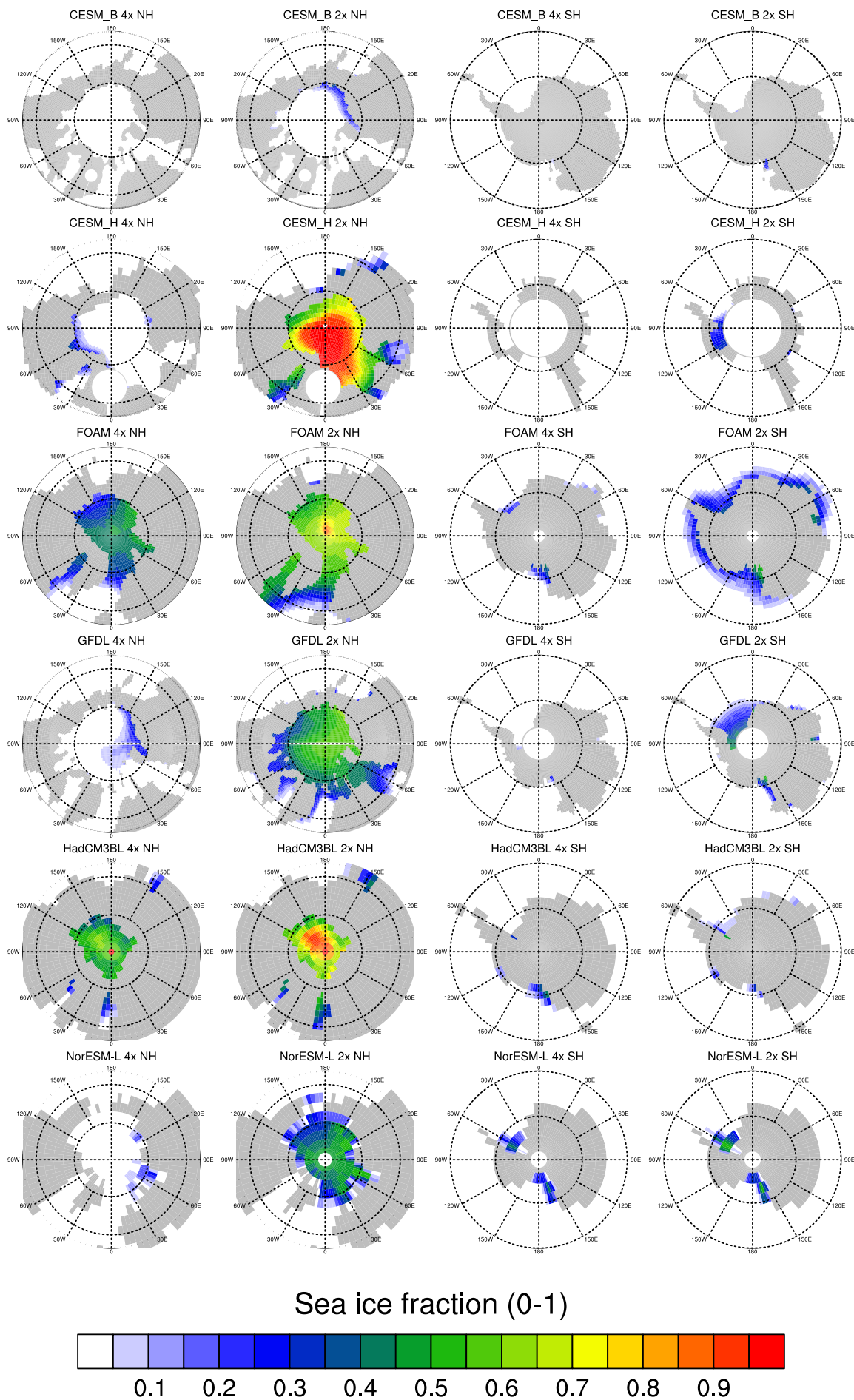


**Figure S2:** Annual surface air temperature from individual model experiments of ICE forcing, showing the 2x (left column), 2xice (middle column) experiments and the difference 2xice-2x (right column).

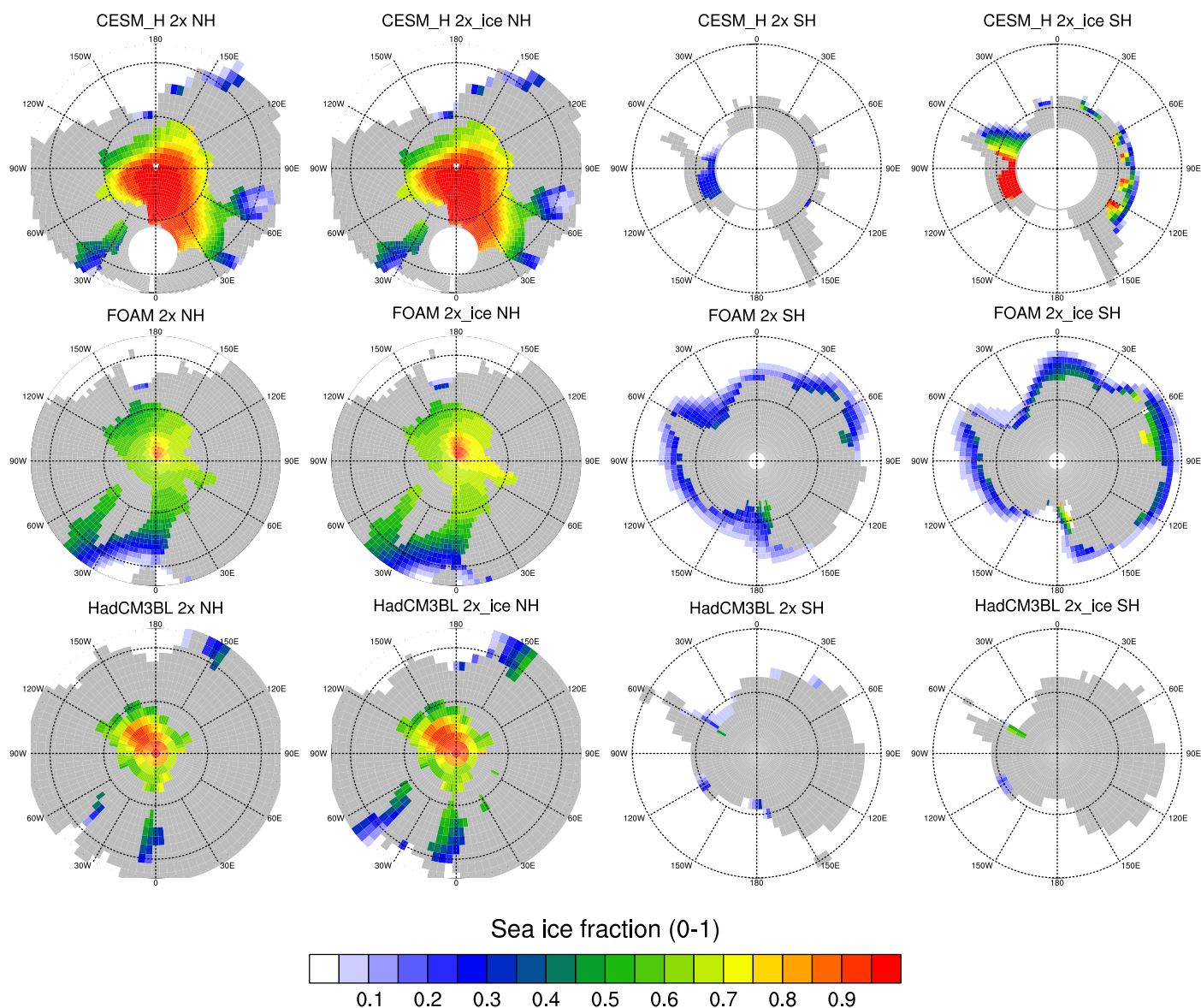


**Figure S3:** Annual surface air temperature from individual model experiments of GEO forcing, showing the preEOT (left column), postEOT (middle column) experiments and the difference postEOT-preEOT (right column).

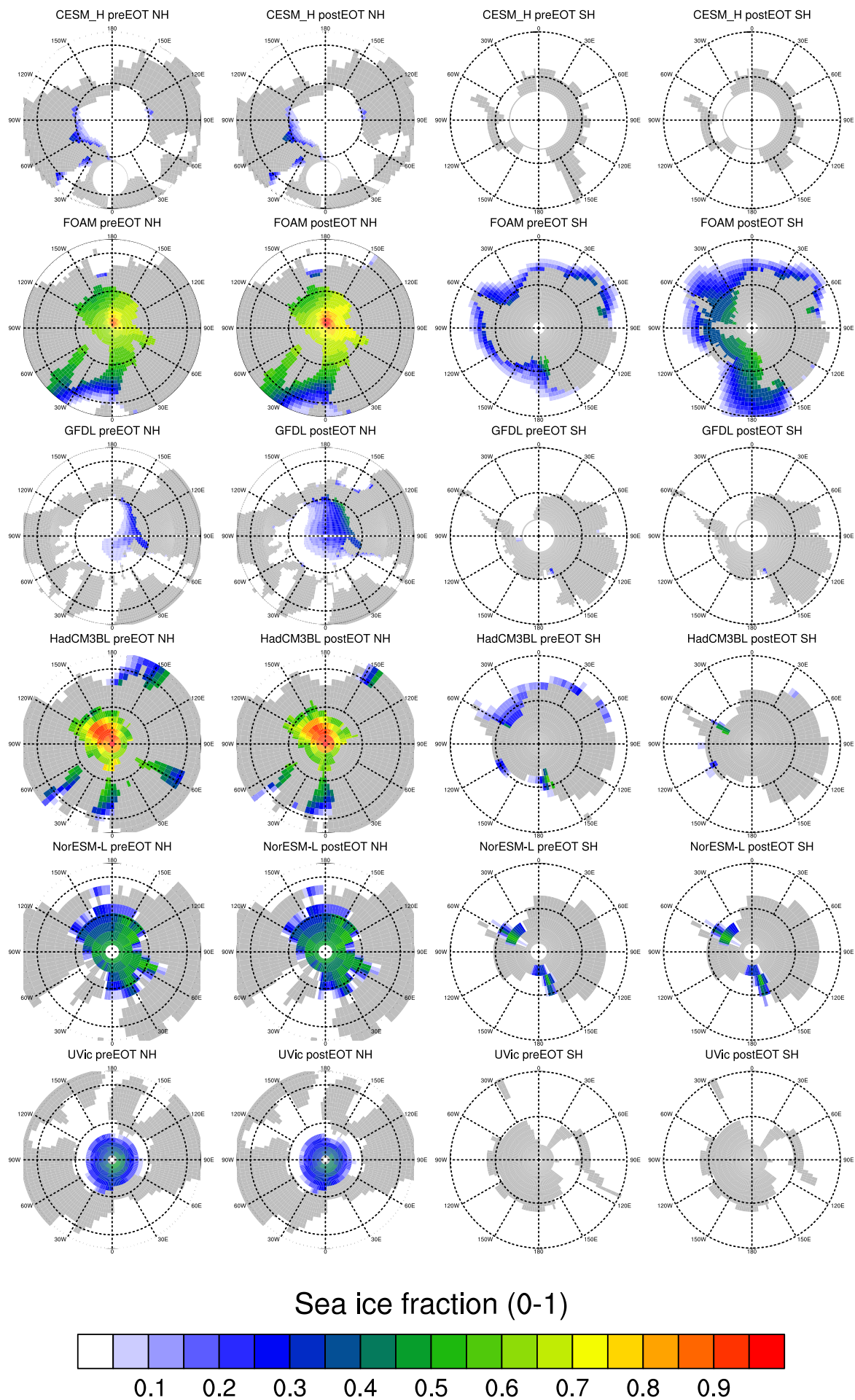




**Figure S4:** Annual mean sea ice extent from individual model experiments of CO<sub>2</sub> forcing, showing, from left to right, 4xCO<sub>2</sub> in the Northern Hemisphere (NH), 2xCO<sub>2</sub> in the NH, 4xCO<sub>2</sub> in the Southern Hemisphere (SH), and 2xCO<sub>2</sub> in the SH.



**Figure S5:** Annual mean sea ice extent from individual model experiments of ICE forcing, showing, from left to right, 2xCO<sub>2</sub> in the Northern Hemisphere (NH), 2xCO<sub>2</sub> + ICE in the NH, 2xCO<sub>2</sub> in the Southern Hemisphere (SH), and 2xCO<sub>2</sub> + ICE in the SH.



**Figure S6:** Annual mean sea ice extent from individual model experiments of GEO forcing, showing, from left to right, pre-EOT in the Northern Hemisphere (NH), post-EOT in the NH, pre-EOT in the Southern Hemisphere (SH), and post-EOT in the SH.