

Supplement of *Clim. Past*, 16, 453–474, 2020
<https://doi.org/10.5194/cp-16-453-2020-supplement>
© Author(s) 2020. This work is distributed under
the Creative Commons Attribution 4.0 License.



Supplement of

Methodological and physical biases in global to subcontinental borehole temperature reconstructions: an assessment from a pseudo-proxy perspective

Camilo Melo-Aguilar et al.

Correspondence to: Camilo Melo-Aguilar (camelo@ucm.es)

The copyright of individual parts of the supplement might differ from the CC BY 4.0 License.

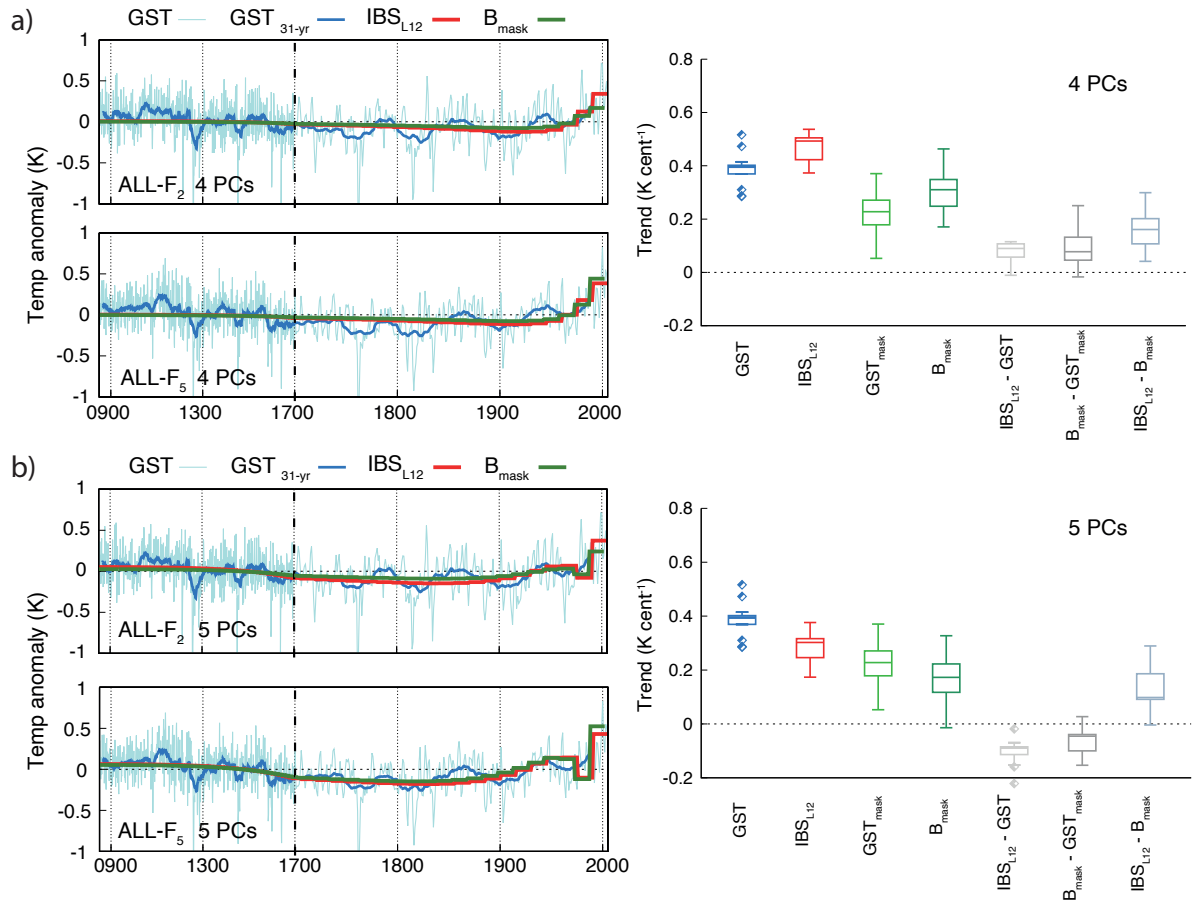


Figure. S1: LM global GST annual anomalies and the corresponding 31-yr filtered outputs, the global IBS_{L12} and the B_{mask} pseudo-reconstructions based on the linear combination of the four a) and five b) principal components for the $ALL-F_2$ and $ALL-F_5$ members of the $ALL-F$ ensemble. Note the different discretization in the x axis after 1700 CE. Boxplots describing the centennial linear trends over the period 1900-2005 CE calculated for each of the 13 ensemble members within the $ALL-F$ ensemble are shown on the right-hand side. The GST, IBS_{L12} , GST_{mask} , B_{mask} and the differences between $IBS_{L12} - GST$, $B_{mask} - GST_{mask}$ and $IBS_{L12} - B_{mask}$ are presented. The 25th, 50th and 75th percentiles are indicated and the whiskers represent the lowest/highest value within 1.5 interquartile range (IQR) of the 25th/75th percentile. Outliers are indicated as diamonds in the same color of the box.