

Supplement of *Clim. Past*, 15, 617–634, 2019
<https://doi.org/10.5194/cp-15-617-2019-supplement>
© Author(s) 2019. This work is distributed under
the Creative Commons Attribution 4.0 License.



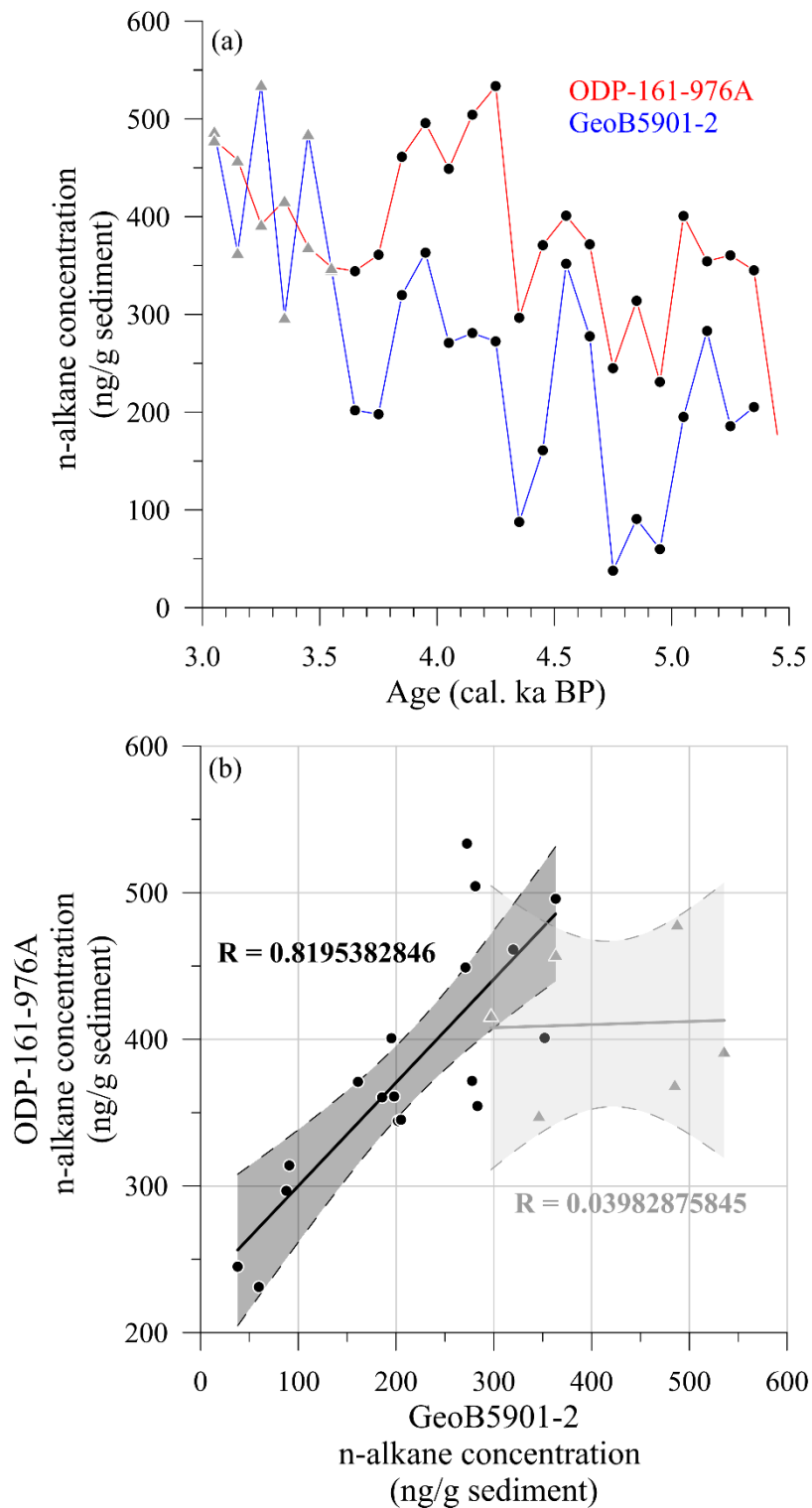
Supplement of

Multi-decadal atmospheric and marine climate variability in southern Iberia during the mid- to late-Holocene

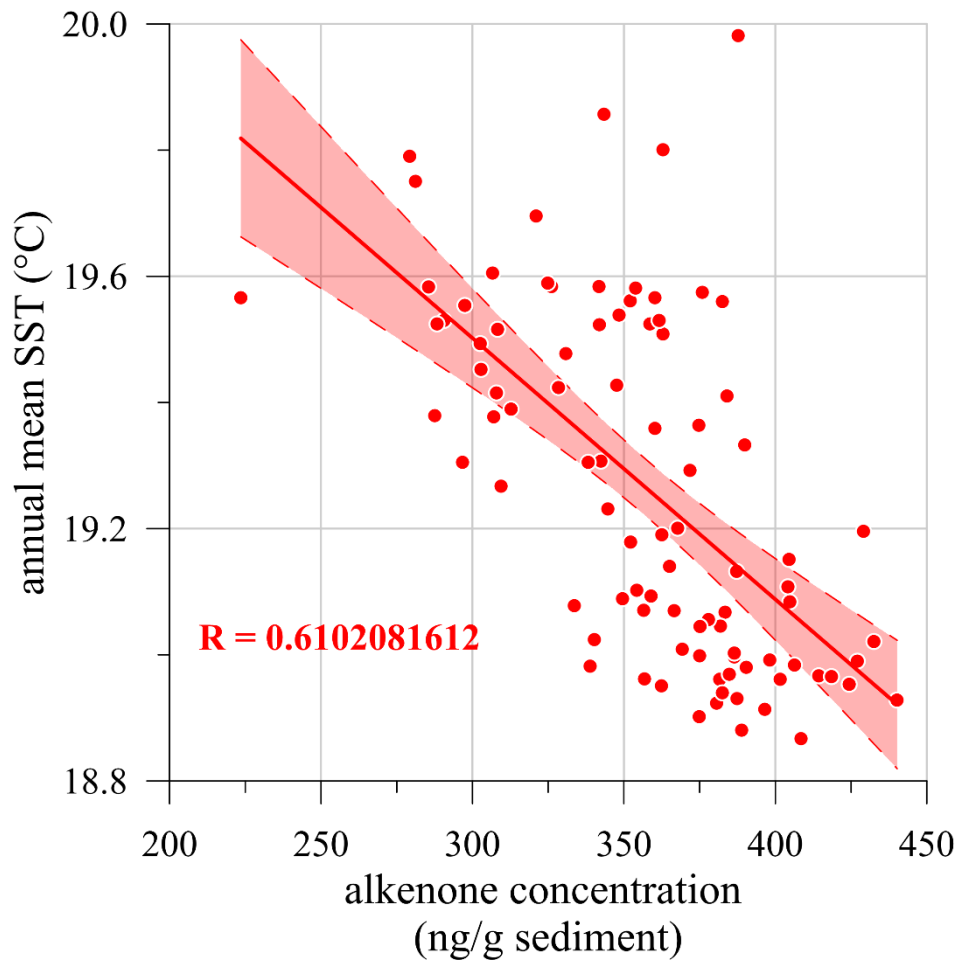
Julien Schirrmacher et al.

Correspondence to: Julien Schirrmacher (jschirrmacher@leibniz.uni-kiel.de)

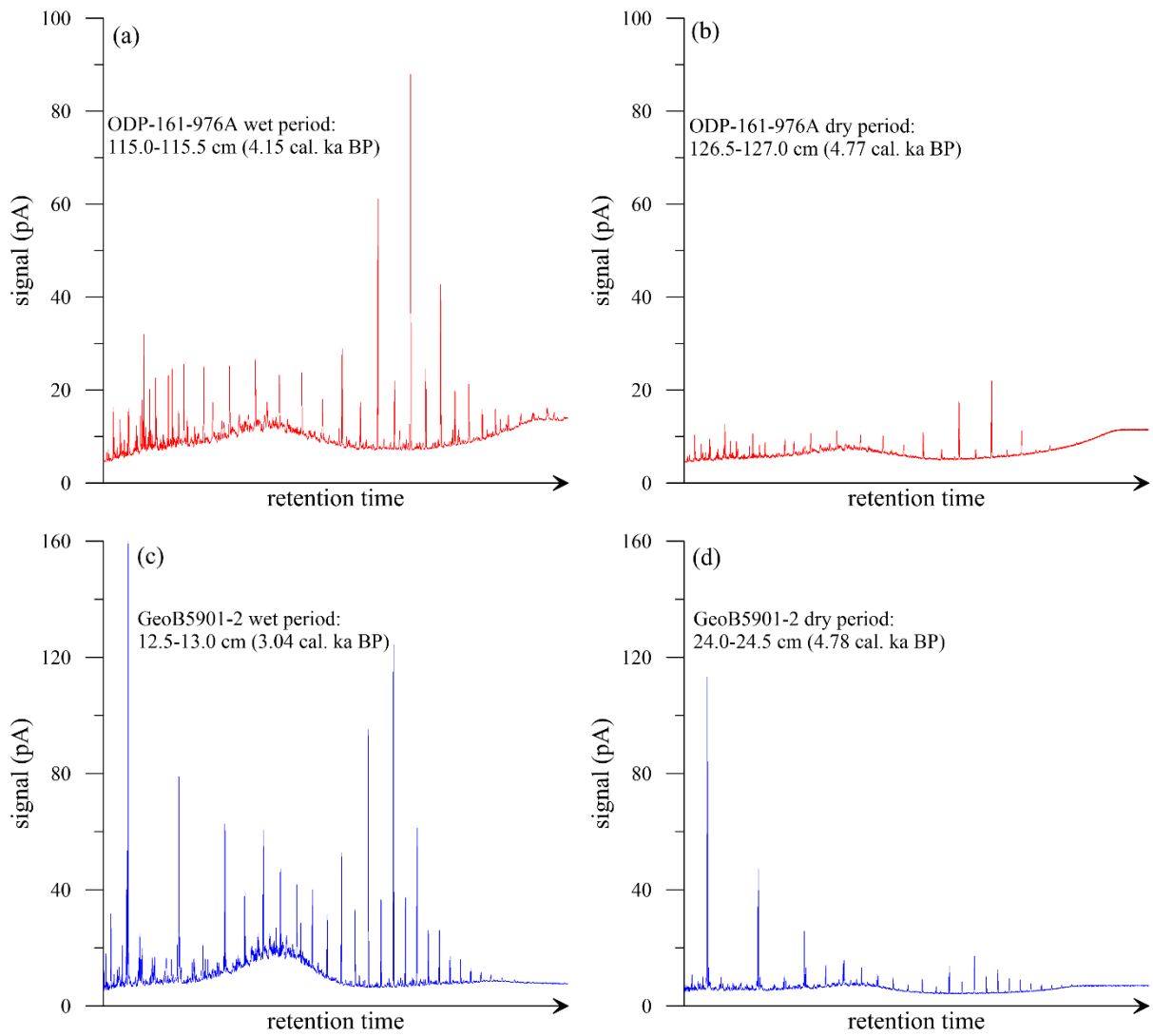
The copyright of individual parts of the supplement might differ from the CC BY 4.0 License.



Supplementary figure 1: (a) 100 yr-means of the n-alkane concentration of sediment cores ODP-161-976A (red) and GeoB5901-2 (blue) calculated from the raw data. Black dots and grey triangles indicate the subdivision of two periods with large differences in the correlation. (b) scatter plot for the period from 3.0 to 3.6 cal. ka BP (grey triangle) and from 3.6 to 5.4 cal. ka BP (black dots) and the according correlation factors (R).



Supplementary figure 2: scatter plot for annual mean SST and MPP from sediment core ODP-161-976A and the according correlation factor (R).



Supplementary figure 3: example chromatograms showing the n-alkane distribution for high terrestrial n-alkane concentrations interpreted as wet periods (a and c) and low terrestrial n-alkane concentrations interpreted as dry periods (b and d) in sediment cores ODP-161-976A (red) and GeoB5901-2 (blue), respectively.