

Supplement of *Clim. Past*, 15, 1647–1664, 2019
<https://doi.org/10.5194/cp-15-1647-2019-supplement>
© Author(s) 2019. This work is distributed under
the Creative Commons Attribution 4.0 License.



Supplement of

Rogation ceremonies: a key to understanding past drought variability in northeastern Spain since 1650

Ernesto Tejedor et al.

Correspondence to: Miguel Ángel Saz (masaz@unizar.es)

The copyright of individual parts of the supplement might differ from the CC BY 4.0 License.

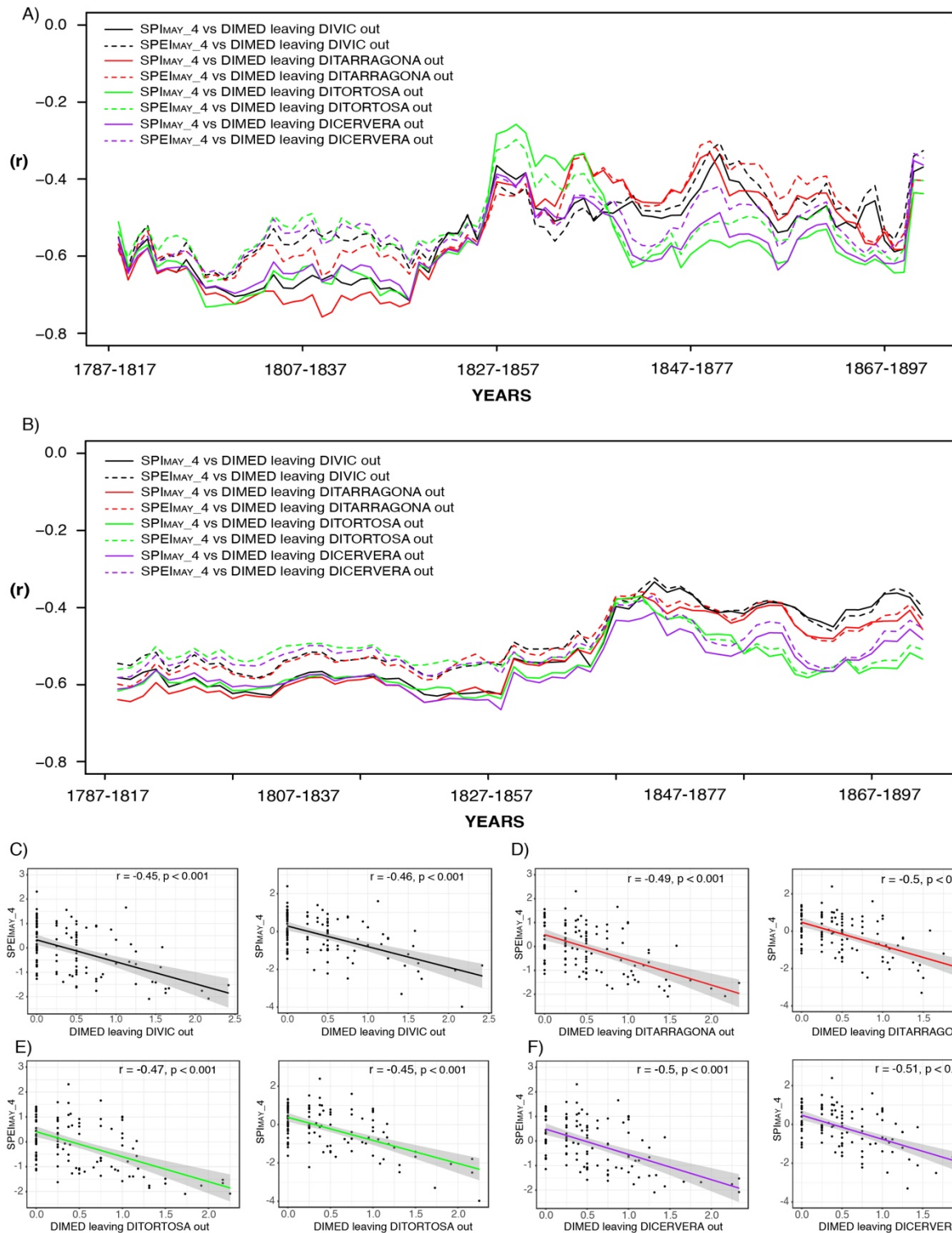


Figure S1. A) 30y moving correlation between a DIMED version leaving one out and the instrumental computed SPI and SPE. B) Same but 50y moving correlations. C) Correlation (Spearman) between DIMED leaving DIVIC out and SPI_{MAY_4}, and SPE_{MAY_4} for the full period (1787-1899). D) Correlation between DIMED leaving DITARRAGONA out and SPI_{MAY_4}, and

SPEIMAY_4 for the full period (1787-1899). E) Correlation between DIMED leaving DITORTOSA out and SPIMAY_4, and SPEIMAY_4 for the full period (1787-1899). F) Correlation between DIMED leaving DICERVERA out and SPIMAY_4, and SPEIMAY_4 for the full period (1787-1899).