



## *Supplement of*

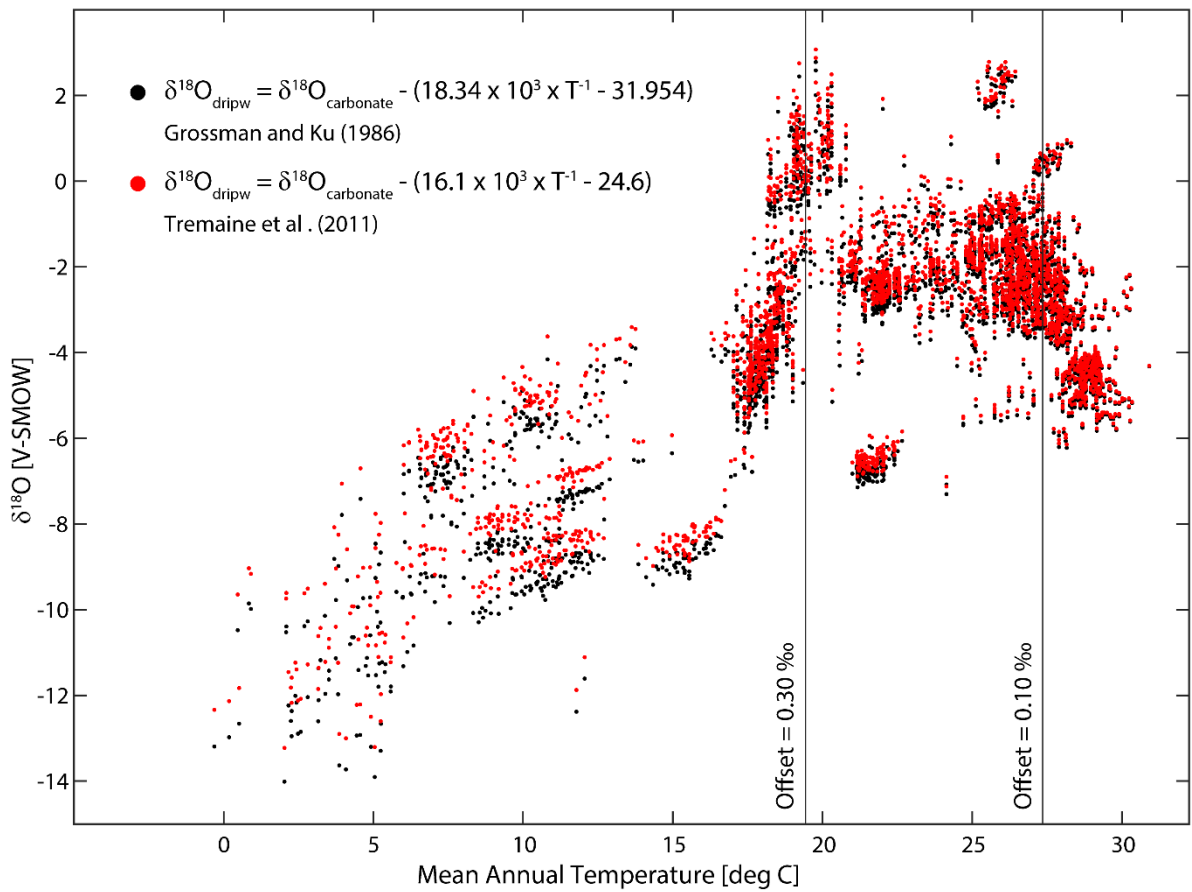
# **Evaluating model outputs using integrated global speleothem records of climate change since the last glacial**

**Laia Comas-Bru et al.**

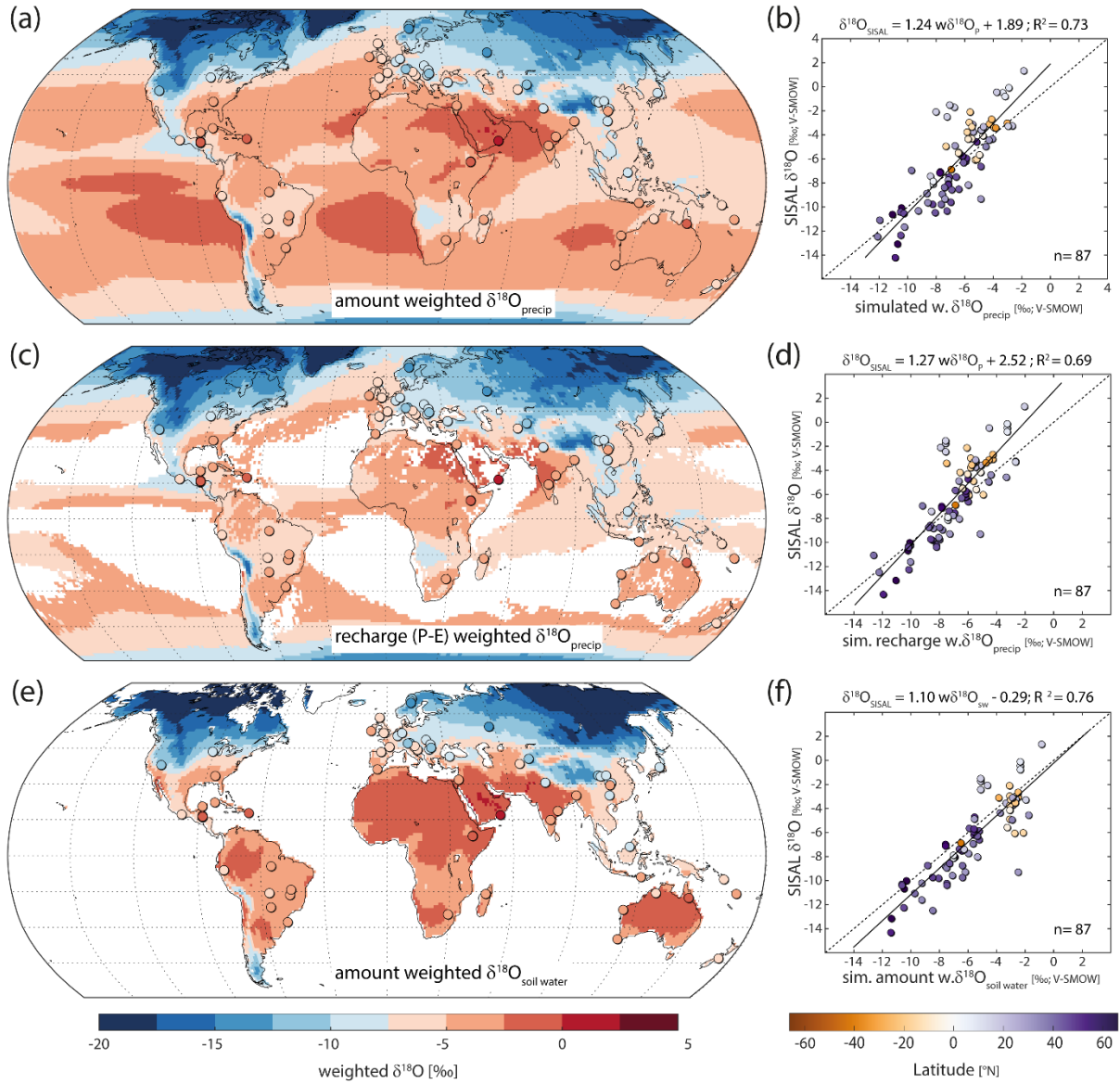
*Correspondence to:* Laia Comas-Bru ([l.comasbru@reading.ac.uk](mailto:l.comasbru@reading.ac.uk))

The copyright of individual parts of the supplement might differ from the CC BY 4.0 License.

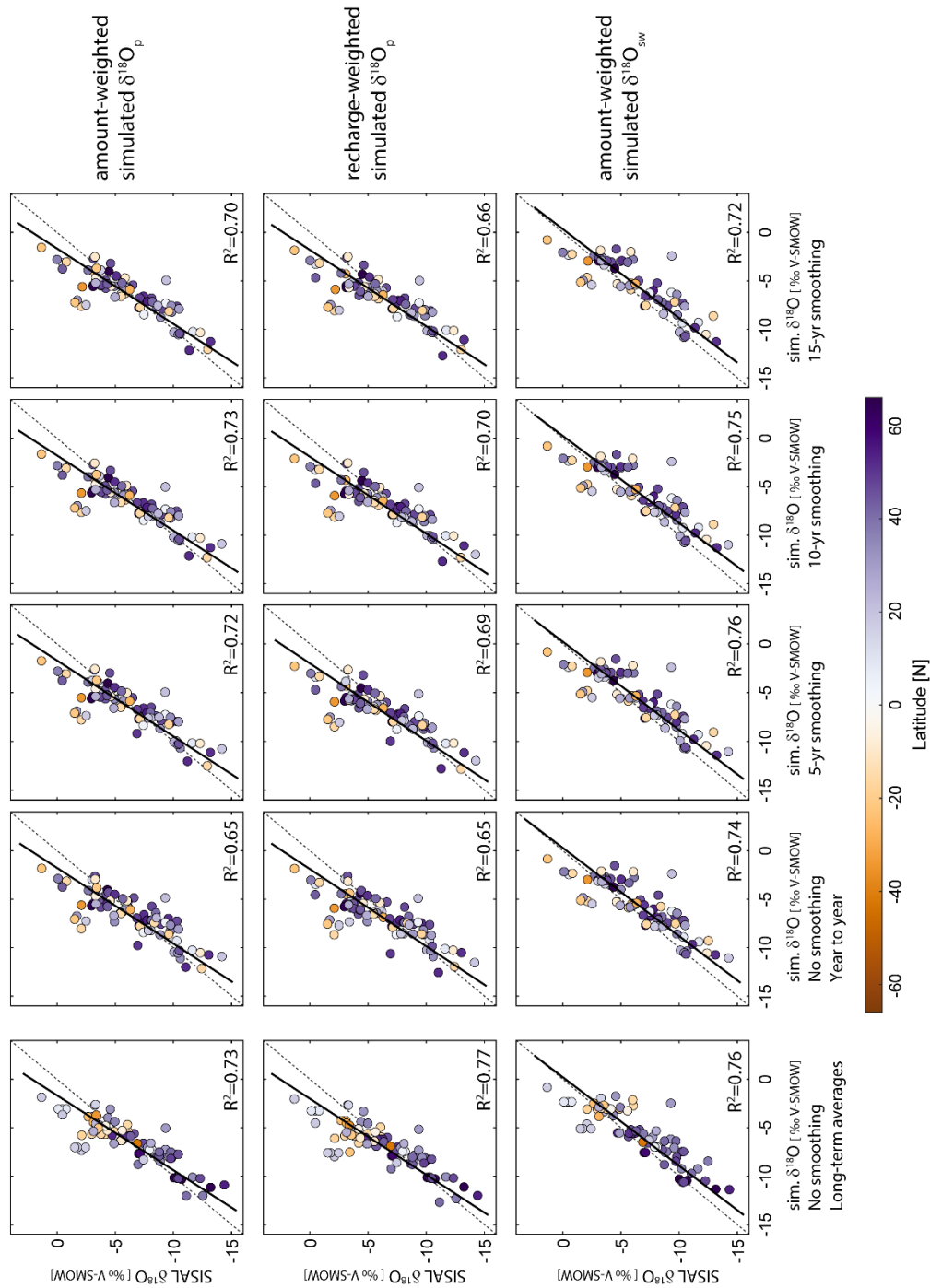
**Figure S1:** Speleothem samples for the period 1958-2013 CE converted to their drip-water equivalent using the fractionation factors from Grossman and Ku (1986; black dots) and Tremaine Tremaine et al. (2011; red dots). We use simulated mean annual temperature (MAT) for the years when samples are available for the conversion. Vertical lines indicate the offset thresholds for 0.1 and 0.3 ‰ with the former corresponding to the average isotope uncertainty in the SISAL database. Maximum offset occurs at low MAT and is 0.86 ‰.



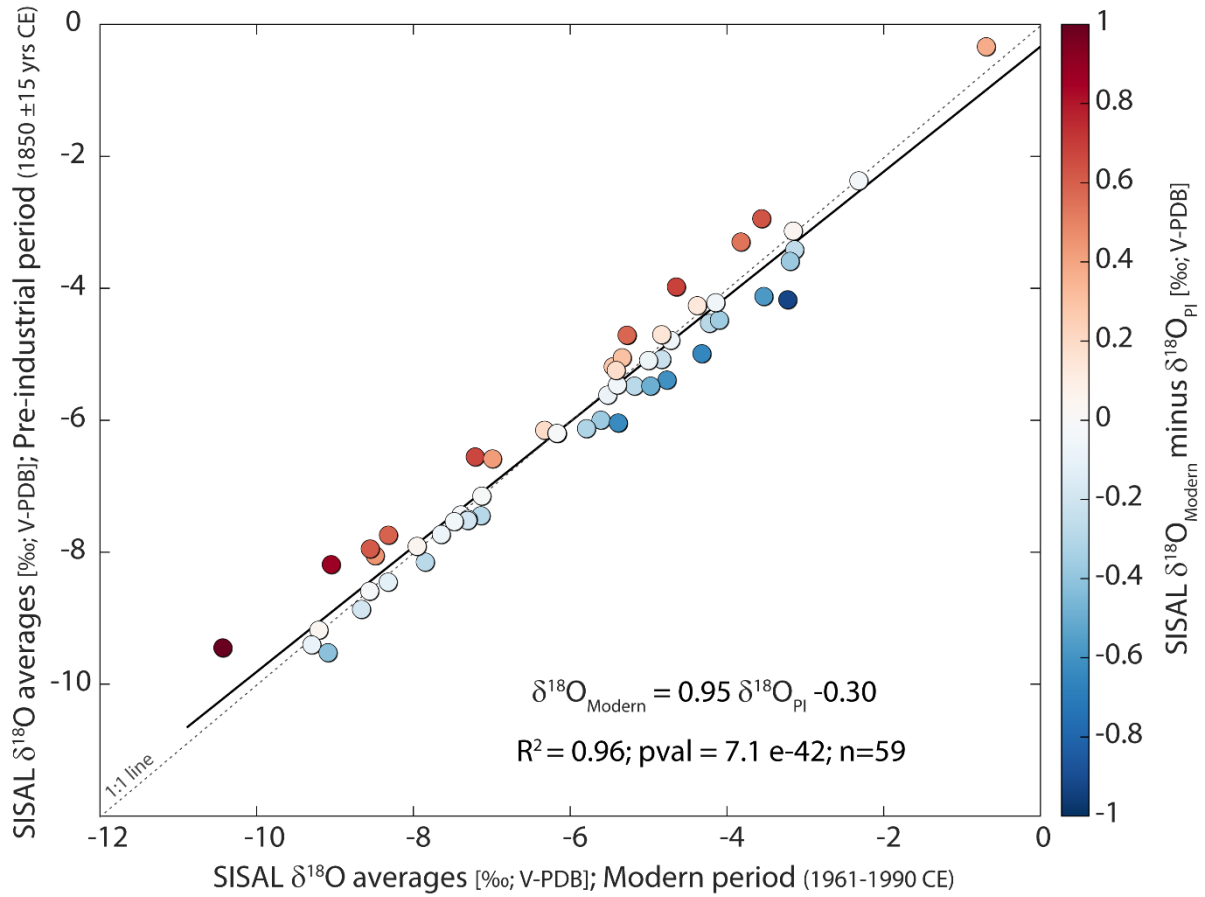
**Figure S2:** Data-model comparison for the modern period (1958–2013) using three methods to treat the simulated data: **(a, b)**  $\delta^{18}\text{O}$  in precipitation weighted according to the monthly precipitation amount. **(c, d)**  $\delta^{18}\text{O}$  in precipitation weighted according to the monthly potential infiltration calculated as precipitation (P) minus evapotranspiration (E) when  $P-E > 0$ . **(e, f)** soil water  $\delta^{18}\text{O}$  weighted according to the monthly soil moisture content (i.e. soil water bucket). (a, c, e) show the data-model agreement. (b, d, f) show the linear regressions of simulated  $\delta^{18}\text{O}$  vs SISAL  $\delta^{18}\text{O}$  data.



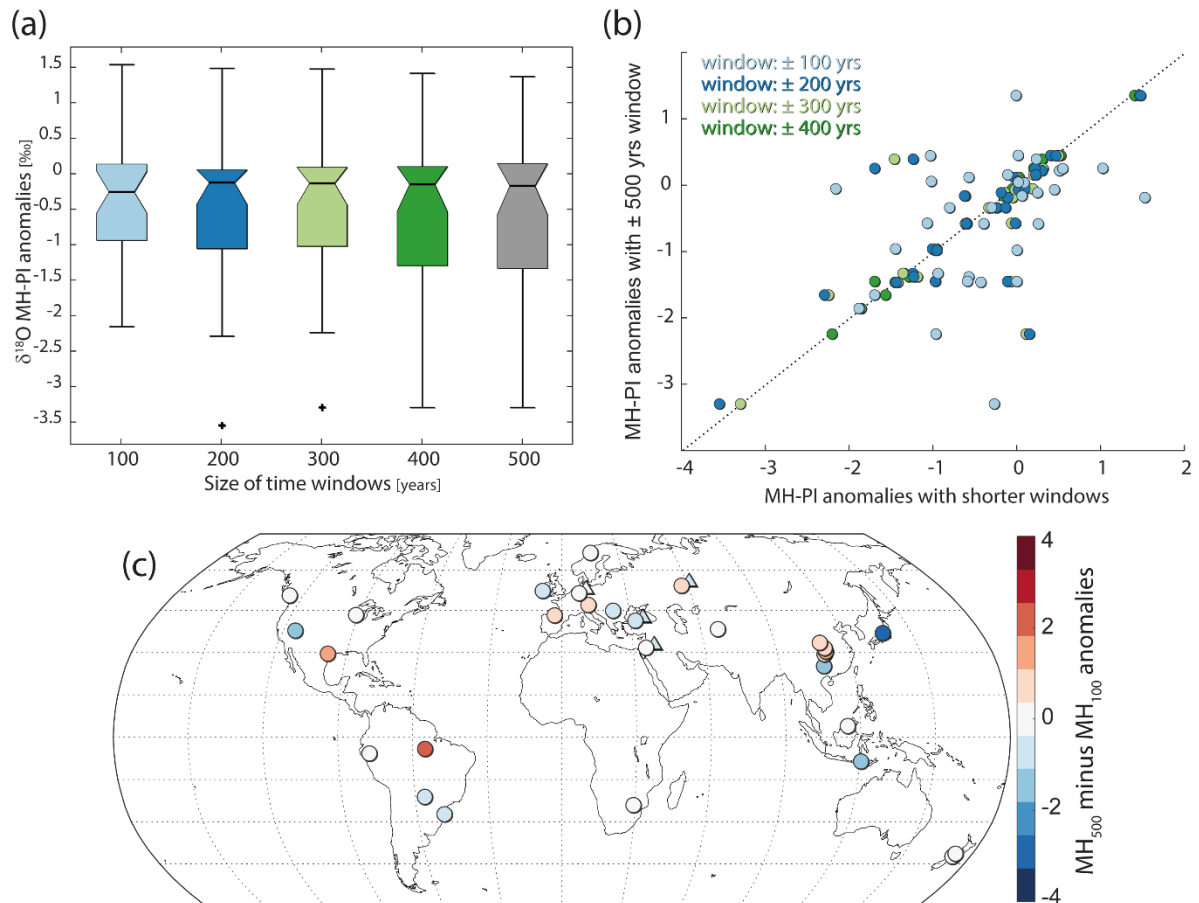
**Figure S3:** Linear regressions between SISAL  $\delta^{18}\text{O}$  and simulated amount-weighted  $\delta^{18}\text{O}_{\text{precip}}$  (top row), recharge weighted  $\delta^{18}\text{O}$  (middle row) and amount weighted  $\delta^{18}\text{O}_{\text{sw}}$  for the period (1958–2013 CE). Data used in first column are long-term SISAL and ECHAM5-wiso data (as in Supplementary Figure 1). Second column is the regression on a year to year basis (i.e. using simulated data only for the years for which SISAL data is available). Third, fourth and fifth columns are the same as the latter after applying a smoothing of 5- 10- and 15-yr respectively. The smoothing was applied using the 5, 10 and 15 years previous to the SISAL's sample date and all years carried the same weight on the mean value. Solid black line is the regression line. Dashed grey line is the 1:1 line. Correlation coefficients ( $R^2$ ) are at the bottom right of each panel.



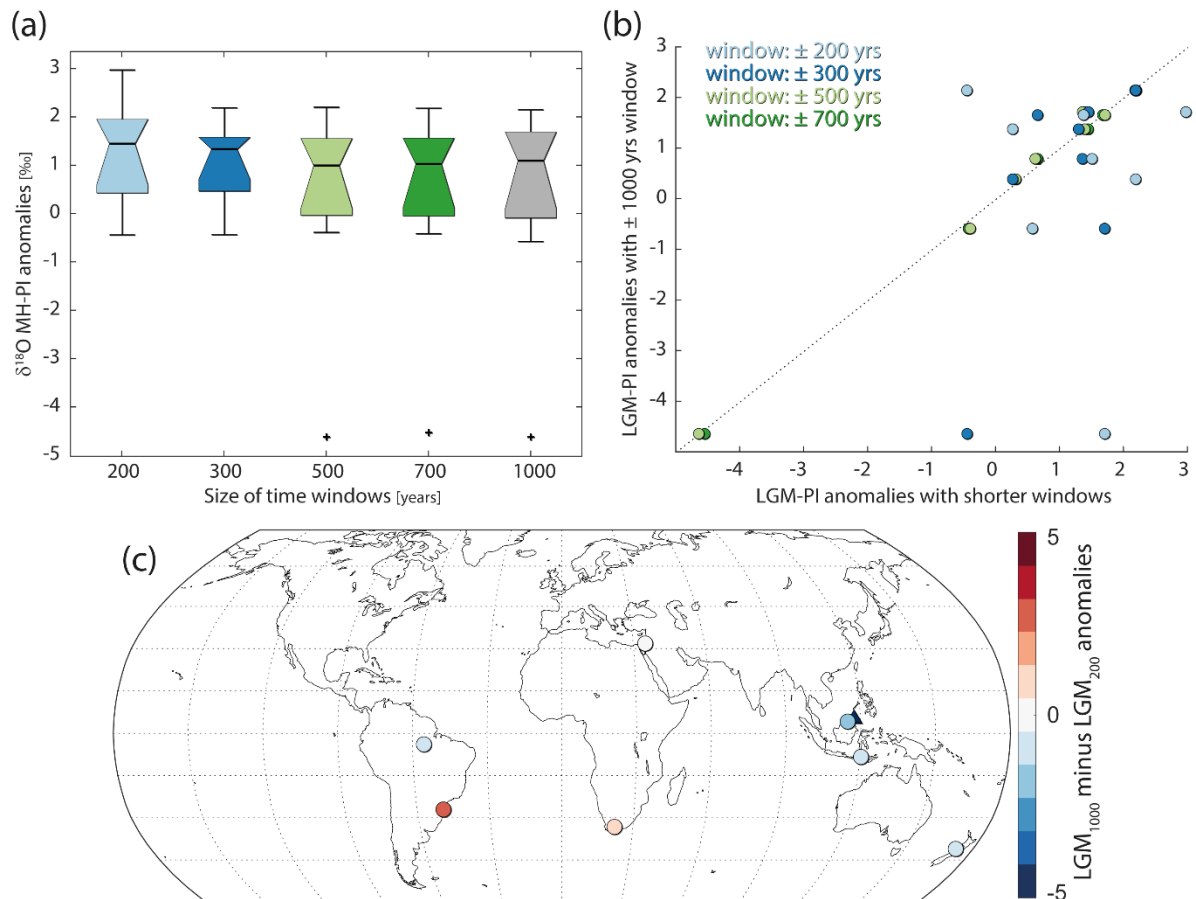
**Figure S4:** Linear regression between SISAL  $\delta^{18}\text{O}$  averages during the modern period (1961-1990 CE) and the pre-industrial (1850 $\pm$ 15 CE). Colour bar shows the difference between the two time periods in ‰ V-PDB.



**Figure S5:** Impact of using time-windows shorter than the convention of  $\pm 500$  yrs on SISAL MH-PI anomalies. **(a)** Boxplots of the global  $\delta^{18}\text{O}$  MH-PI anomalies across time window widths. **(b)** Anomalies using windows of 100 to 400 yrs versus the anomalies calculated using the conventional 500 yrs. **(c)** Differences between MH-PI anomalies using 500 and 100 yrs. See Supplementary Table 1 for the number of entities and sites available for each window width.



**Figure S6:** Impact of using time-windows shorter than the convention of  $\pm 1,000$  yrs on SISAL LGM-PI anomalies. **(a)** Boxplots of the global  $\delta^{18}\text{O}$  LGM-PI anomalies across time window widths. **(b)** Anomalies using windows of 200 to 400 yrs versus the anomalies calculated using the conventional 1,000 yrs. **(c)** Differences between LGM-PI anomalies using 1,000 and 200 yrs. See Supplementary Table 2 for the number of entities and sites available for each window width.



**Table S1:** Number of entities used in Figure S5.

MH window size	Individual entities	Individual sites	Individual entities overlapping with ext. PI	Individual sites overlapping with ext. PI (1850-1990)
± 500 yrs	106	74	36	32
± 400 yrs	105	73	36	32
± 300 yrs	104	73	35	32
± 200 yrs	99	73	35	32
± 100 yrs	92	68	33	30

**Table S2:** Number of entities used in Figure S6.

LGM window size	Individual entities	Individual sites	Individual entities overlapping with ext. PI	Individual sites overlapping with ext. PI
± 1000 yrs	48	35	11	10
± 700 yrs	45	34	10	10
± 500 yrs	43	33	10	10
± 300 yrs	41	31	9	9
± 200 yrs	39	29	8	8

## Reference list

Grossman, E. L., and Ku, T.-L.: Oxygen and carbon isotope fractionation in biogenic aragonite:

Temperature effects, *Chemical Geology: Isotope Geoscience section*, 59, 59-74,

[https://doi.org/10.1016/0168-9622\(86\)90057-6](https://doi.org/10.1016/0168-9622(86)90057-6), 1986.

Tremaine, D. M., Froelich, P. N., and Wang, Y.: Speleothem calcite formed in situ: Modern calibration of  $\delta^{18}\text{O}$  and  $\delta^{13}\text{C}$  paleoclimate proxies in a continuously-monitored natural cave system,

*Geochimica et Cosmochimica Acta*, 75, 4929-4950,

<https://doi.org/10.1016/j.gca.2011.06.005>, 2011.