

Supplement of *Clim. Past*, 15, 1463–1483, 2019
<https://doi.org/10.5194/cp-15-1463-2019-supplement>
© Author(s) 2019. This work is distributed under
the Creative Commons Attribution 4.0 License.



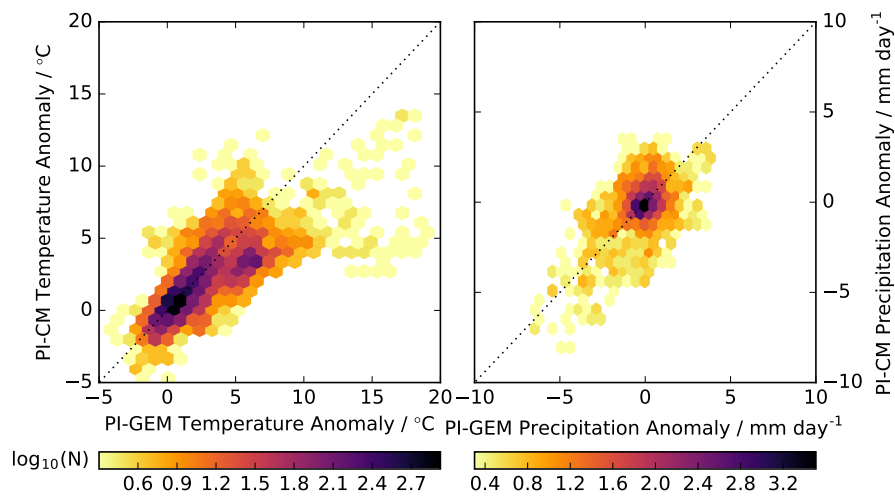
Supplement of

Simulating the climate response to atmospheric oxygen variability in the Phanerozoic: a focus on the Holocene, Cretaceous and Permian

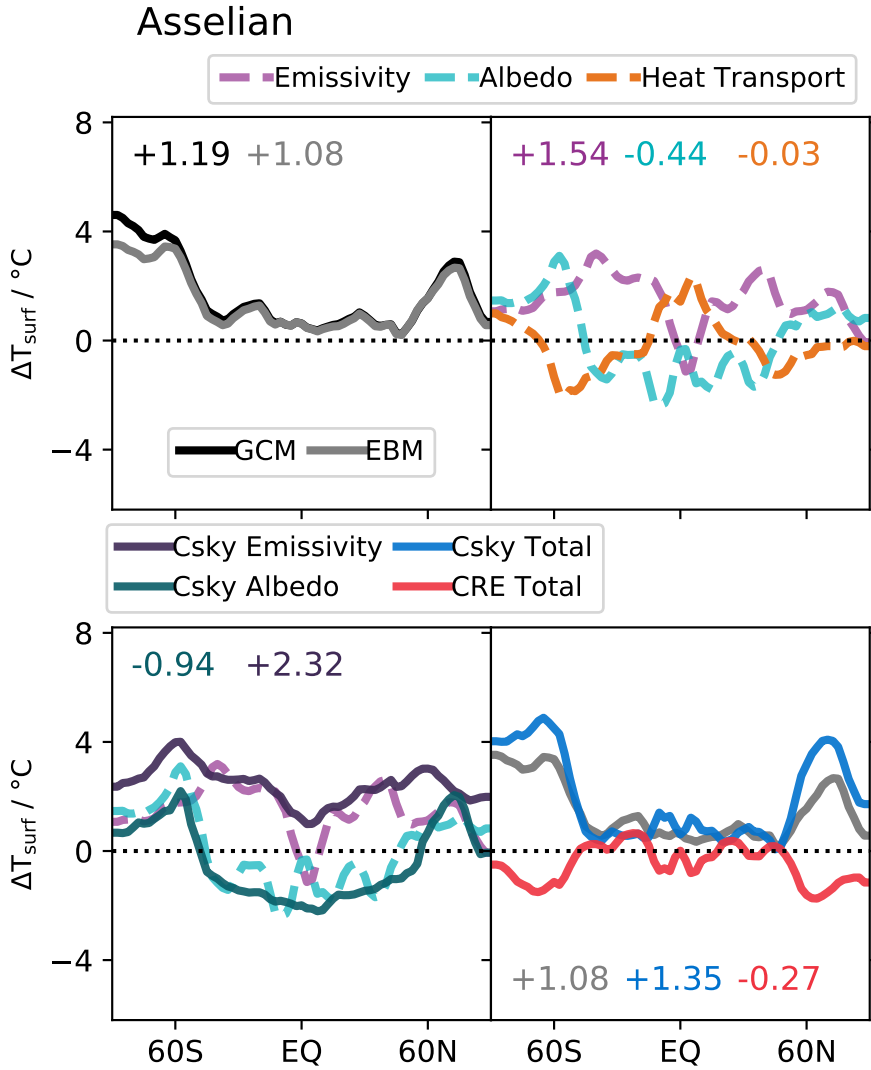
David C. Wade et al.

Correspondence to: David C. Wade (dcw32.wade@gmail.com) and Alexander T. Archibald (ata27@cam.ac.uk)

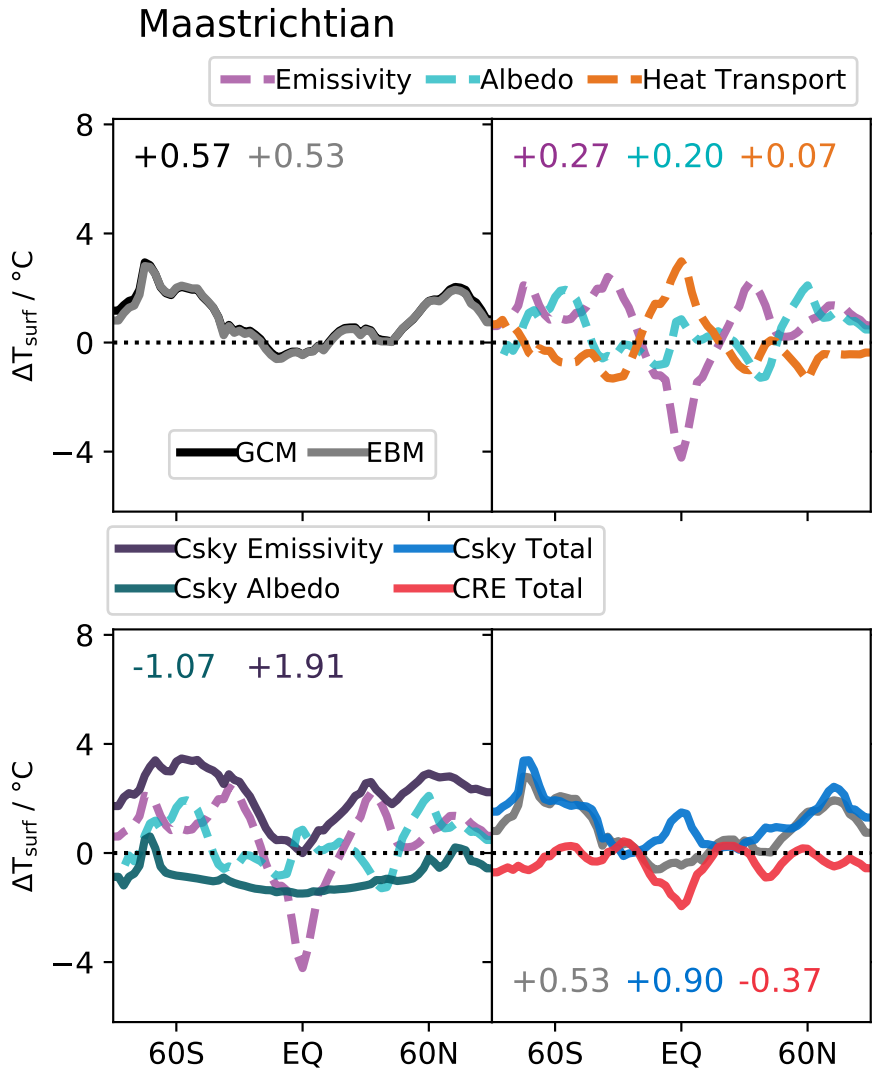
The copyright of individual parts of the supplement might differ from the CC BY 4.0 License.



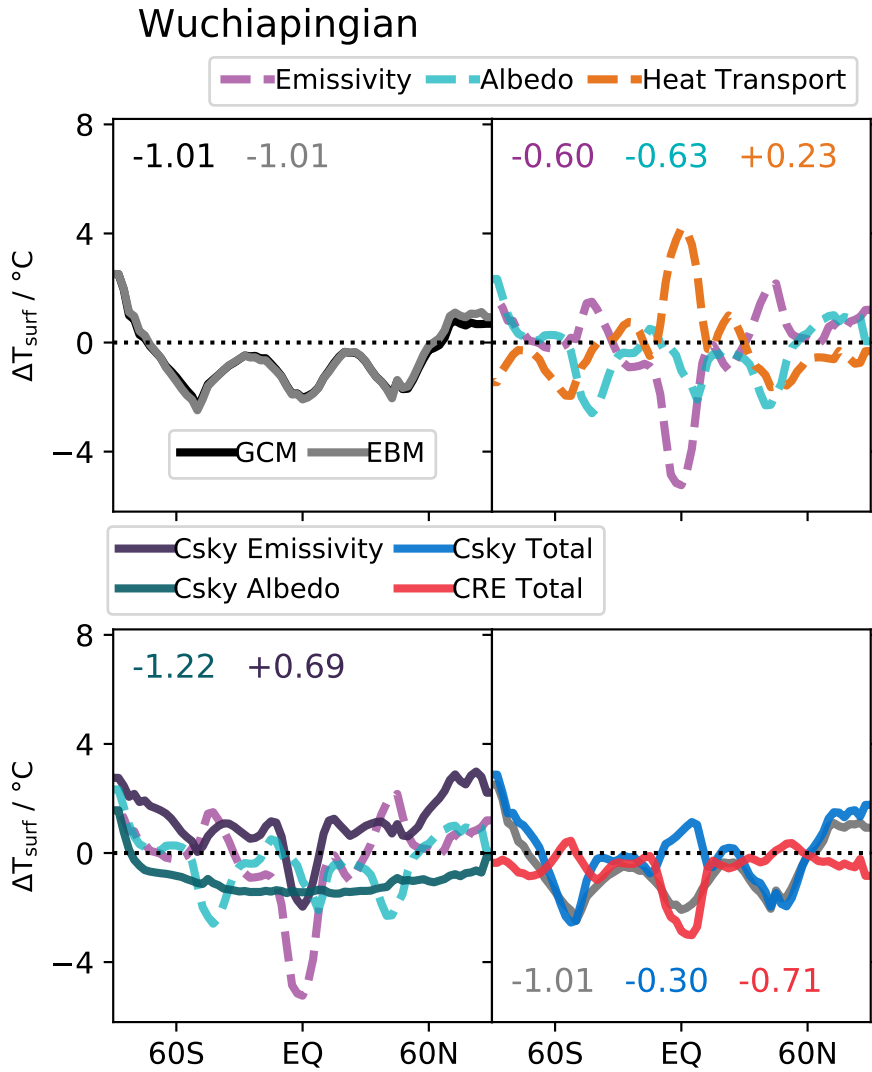
Supplementary Figure 1: Hexbin plots of surface air temperature anomaly (left) and precipitation anomaly (right) comparing PI-GEM₁₀³⁵ and PI-CM₁₀³⁵. Note that there is reasonable agreement between HadCM3-BL and HadGEM3-AO, however HadCM3-BL does not simulate the largest temperature anomalies simulated by HadGEM3-AO.



Supplementary Figure 2: 1D-EBM decomposition for As- CM_{10}^{35} . Top left: EBM results (grey) vs GCM results (black). Top right: Decomposition of EBM into the emissivity (purple), albedo (green) and heat transport (orange) components of the temperature change. Bottom left: Clear-sky emissivity (dark purple) and albedo (dark green) components of the EBM. Bottom right: Decomposition of EBM into the total clear-sky (blue), cloudy-sky (red) and all-sky (grey) components.



Supplementary Figure 3: 1D-EBM decomposition for Ma-CM₁₀³⁵. Top left: EBM results (grey) vs GCM results (black). Top right: Decomposition of EBM into the emissivity (purple), albedo (green) and heat transport (orange) components of the temperature change. Bottom left: Clear-sky emissivity (dark purple) and albedo (dark green) components of the EBM. Bottom right: Decomposition of EBM into the total clear-sky (blue), cloudy-sky (red) and all-sky (grey) components.



Supplementary Figure 4: 1D-EBM decomposition for Wu-CM₁₀³⁵. Top left: EBM results (grey) vs GCM results (black). Top right: Decomposition of EBM into the emissivity (purple), albedo (green) and heat transport (orange) components of the temperature change. Bottom left: Clear-sky emissivity (dark purple) and albedo (dark green) components of the EBM. Bottom right: Decomposition of EBM into the total clear-sky (blue), cloudy-sky (red) and all-sky (grey) components.