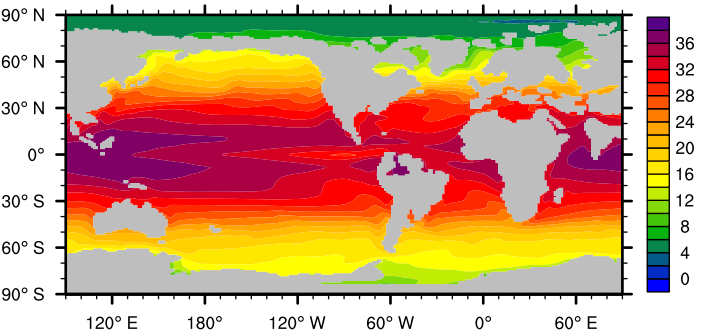
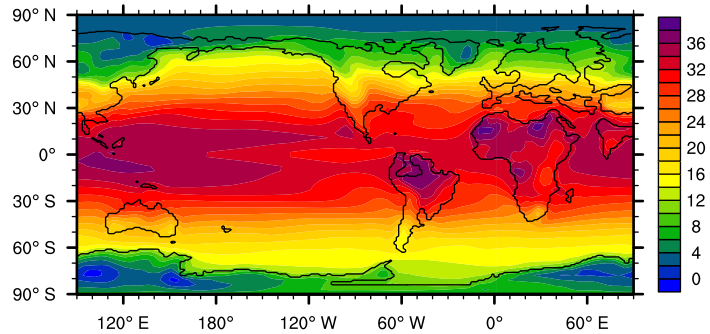
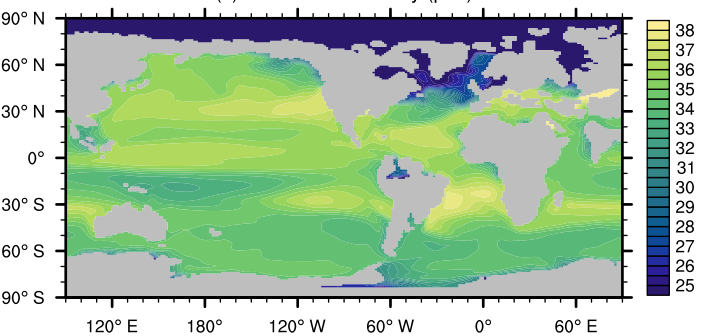
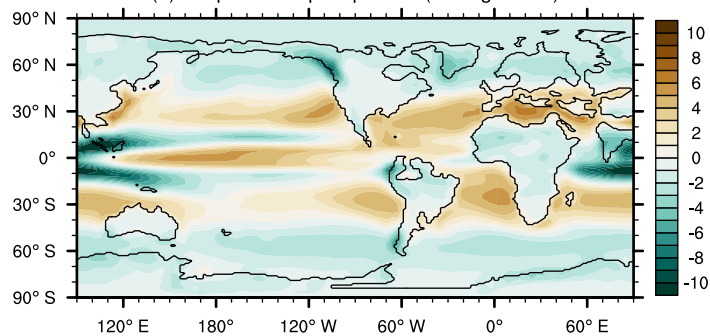
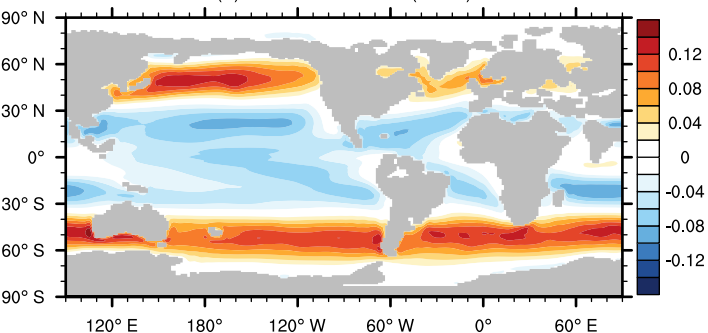


(a) Sea surface temperature ($^{\circ}\text{C}$)(b) Surface air temperature ($^{\circ}\text{C}$)

(c) Sea surface salinity (psu)

(d) Evaporation - precipitation ($10^5 \text{ kg m}^{-2} \text{ s}^{-1}$)(e) Zonal wind stress (N m^{-2})

(f) Barotropic streamfunction (Sv)

