

Supplement of *Clim. Past*, 12, 749–767, 2016
<http://www.clim-past.net/12/749/2016/>
doi:10.5194/cp-12-749-2016-supplement
© Author(s) 2016. CC Attribution 3.0 License.



Supplement of

Arctic sea ice simulation in the PlioMIP ensemble

Fergus W. Howell et al.

Correspondence to: Fergus W. Howell (eefwh@leeds.ac.uk)

The copyright of individual parts of the supplement might differ from the CC-BY 3.0 licence.

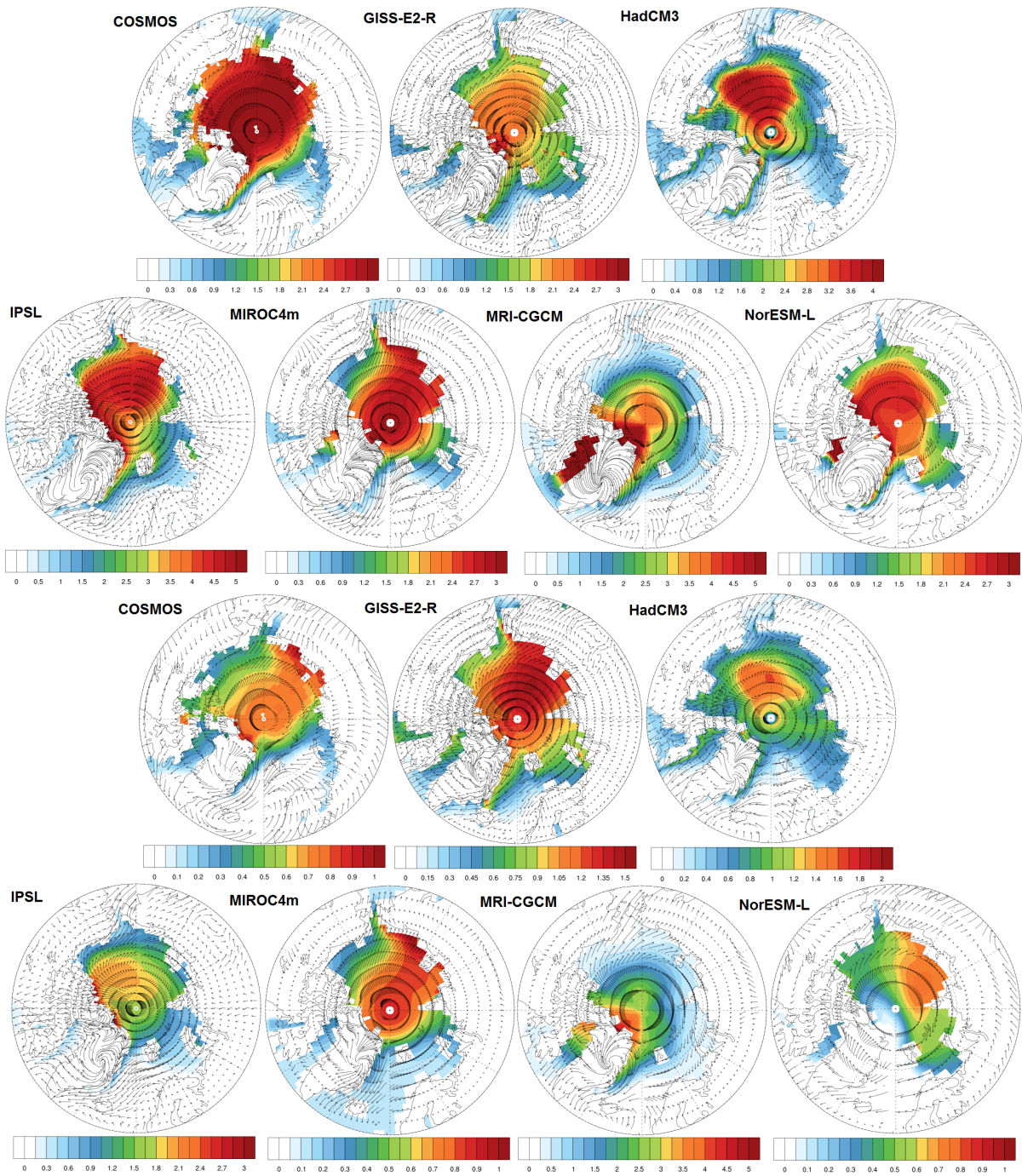


Figure 1. Mean annual 10 m winds and mean annual sea ice thickness (m) in pre-industrial (upper half) and mid-Pliocene (lower half) for each PlioMIP Experiment 2 model (excluding CCSM4). Vector length is proportional to wind speed.

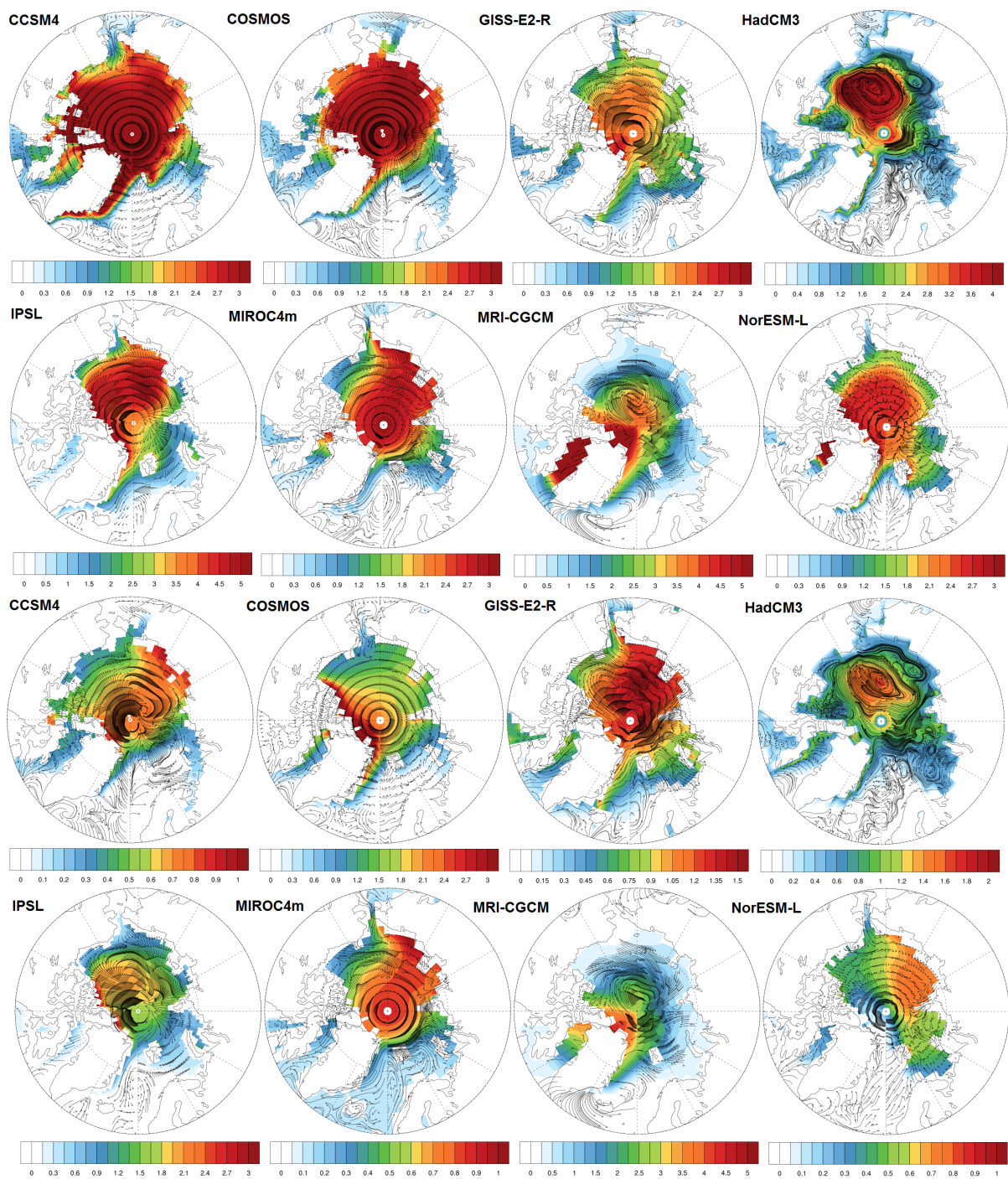


Figure 2. Mean annual surface ocean currents and sea ice thicknesses (m) in pre-industrial (upper half) and mid-Pliocene (lower half) for each PlioMIP Experiment 2 model. Vector length is proportional to ocean current speed.