



Supplement of

On the occurrence of annual layers in Dome Fuji ice core early Holocene ice

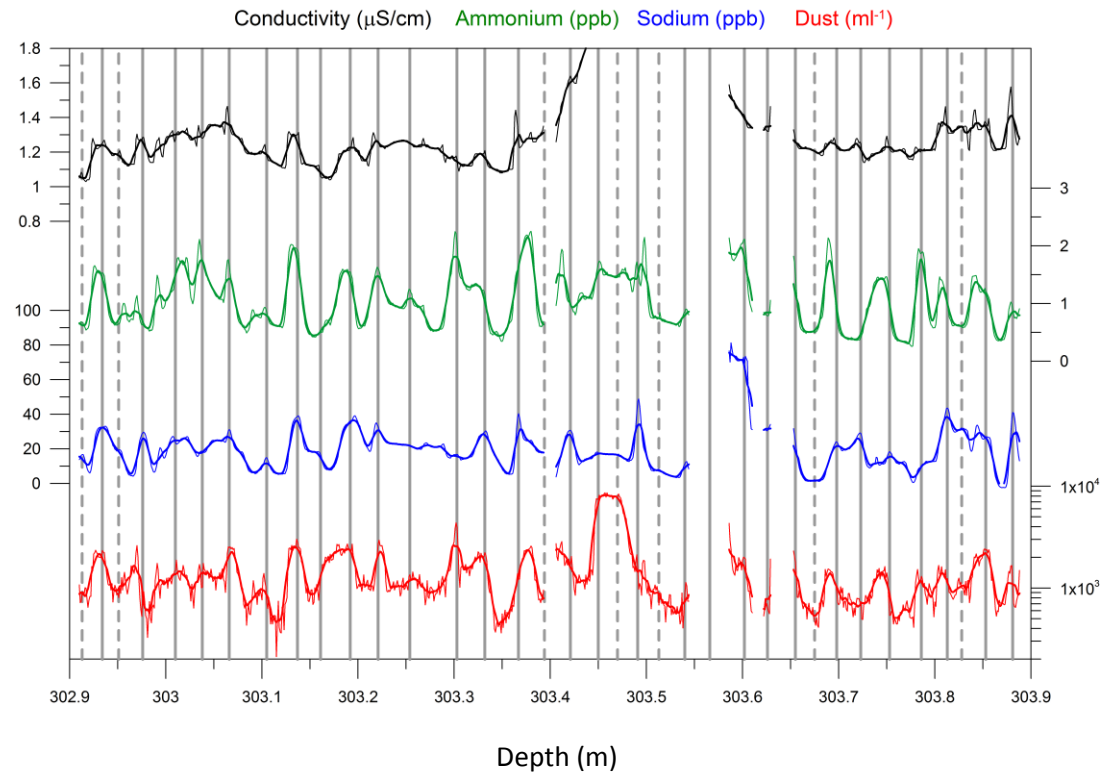
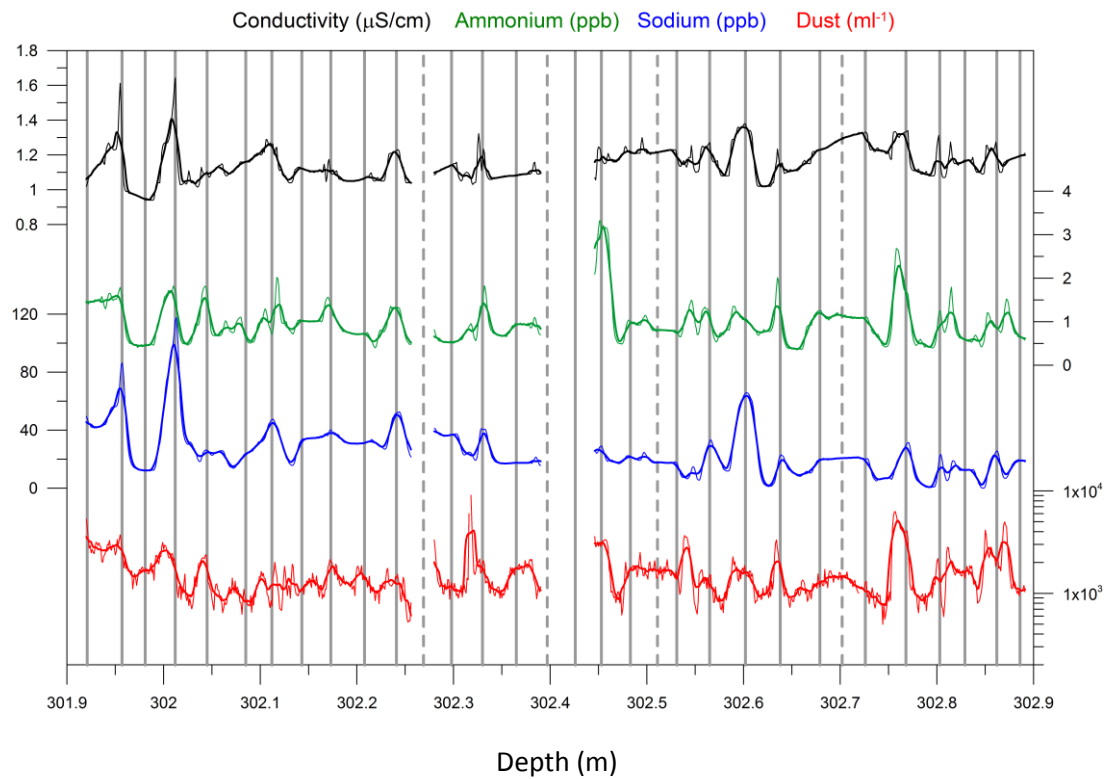
A. Svensson et al.

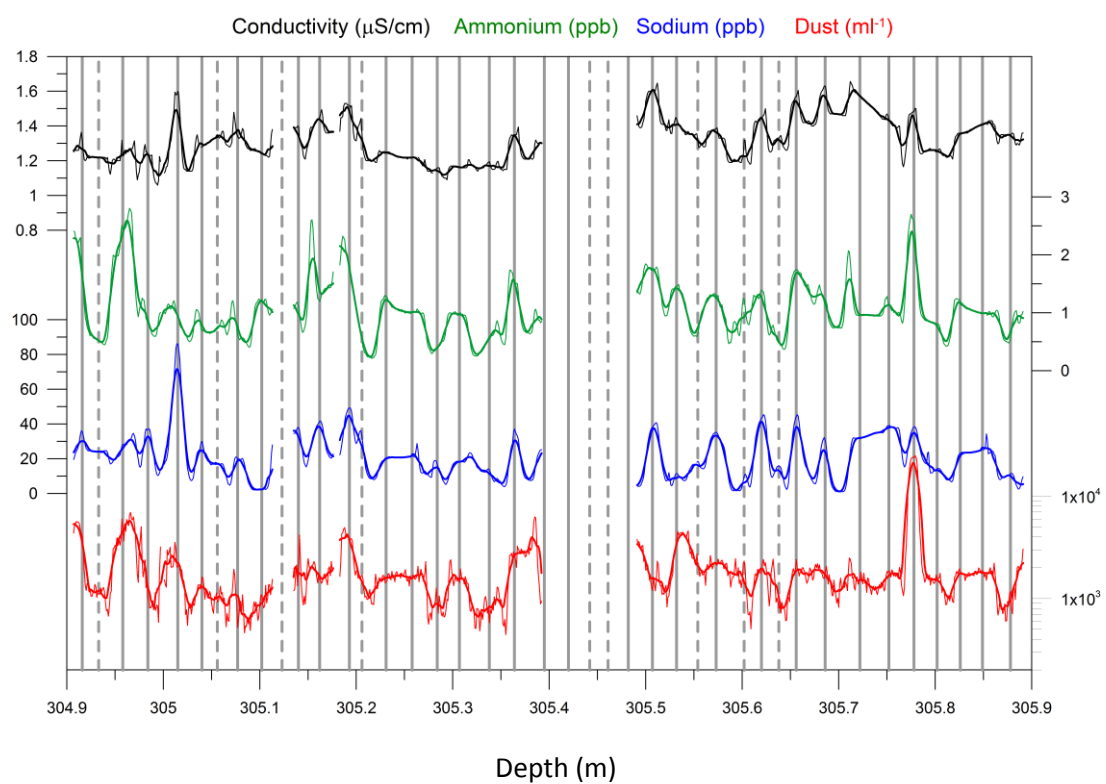
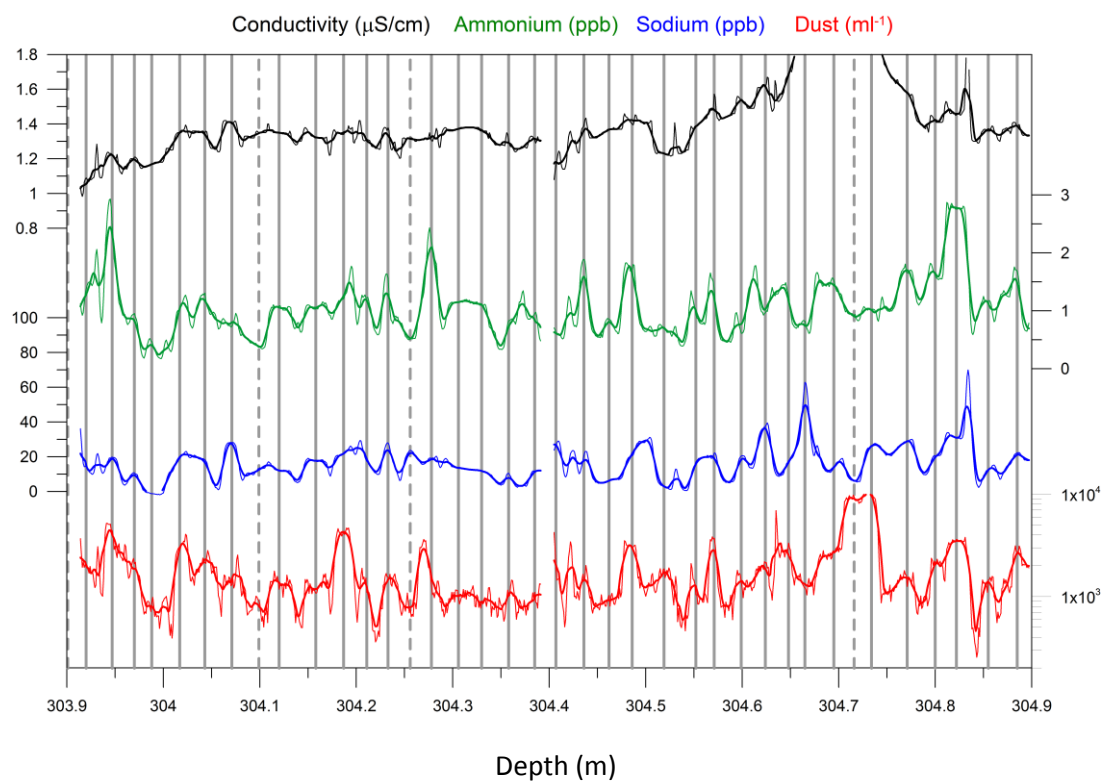
Correspondence to: A. Svensson (as@gfy.ku.dk)

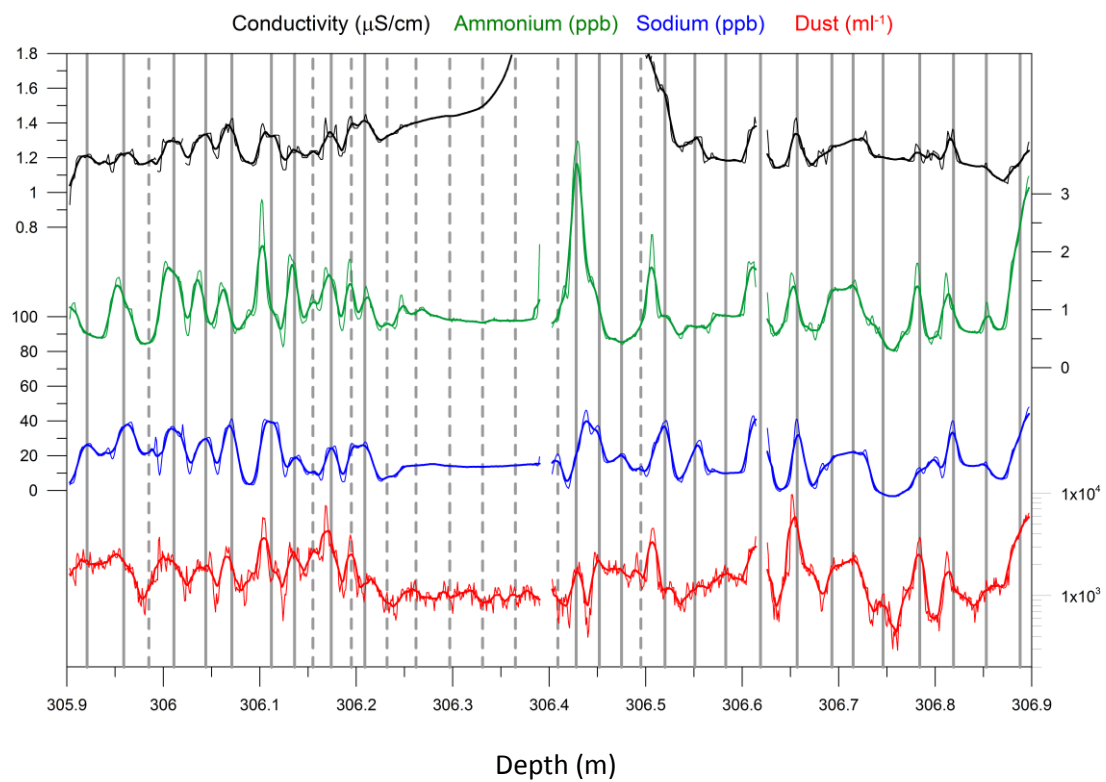
The copyright of individual parts of the supplement might differ from the CC-BY 3.0 licence.

On the occurrence of annual layers in Dome Fuji ice core early Holocene ice

Supplement







Figures S1-S5 showing the analysed 5 m of CFA records in high resolution including suggested layer marks.

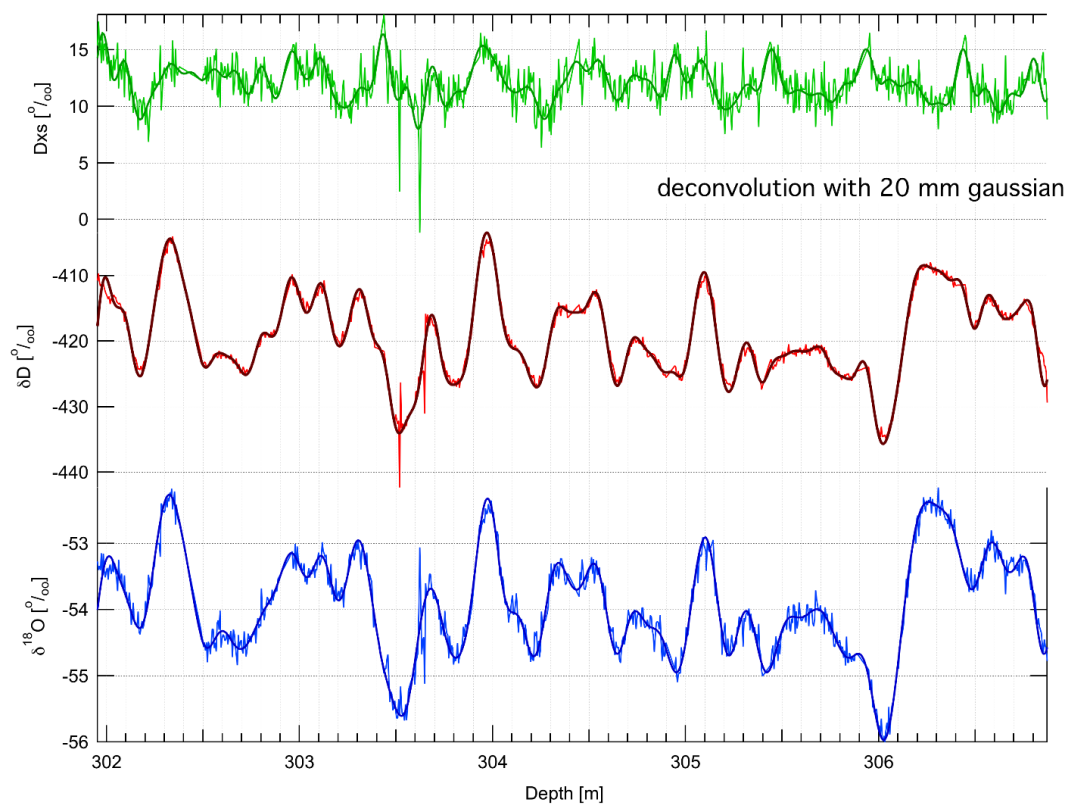


Figure S6. Continuously measured water isotopes $\delta^{18}\text{O}$ and δD as well as the derived deuterium excess (Dxs).