

Supplement of *Clim. Past*, 10, 975–985, 2014
<http://www.clim-past.net/cp-10-975-2014/>
doi:10.5194/cp-10-975-2014-supplement
© Author(s) 2014. CC Attribution 3.0 License.



Climate
of the Past

Open Access



Supplement of

Evaluation of the ability of the Chinese stalagmite $\delta^{18}\text{O}$ to record the variation in atmospheric circulation during the second half of the 20th century

S. Nan et al.

Correspondence to: S. Nan (nansl@cams.cma.gov.cn) and M. Tan (tanming@mail.iggcas.ac.cn)

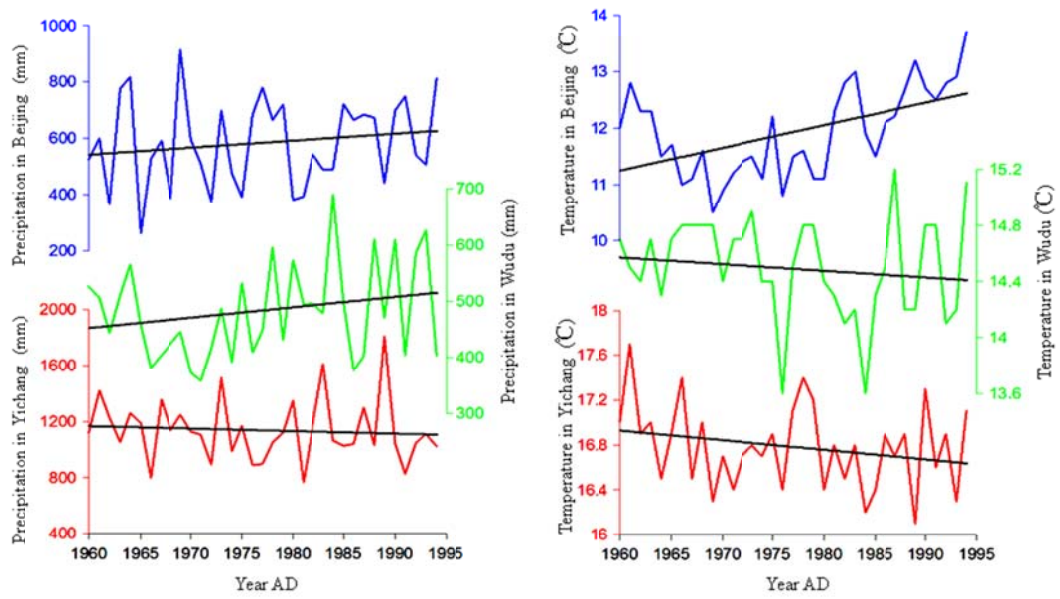


Fig. S1. A comparison among the time series of the annual temperature and precipitation for Beijing, Wudu and Yichang, which are the meteorological sites nearest to the series S312, WX42B and HS4, respectively.